

Link&Locate Featuring WinLink

- 32-Bit Protected-Mode Development
- 16-Bit Real- and Protected-Mode Development
- Windows* NT, Windows 95, and DOS Hosted
- Supports Microsoft, Borland, Watcom and MetaWare C/C++ Compilers
- 32-Bit COFF and CV4 Support
- File Output in OMF, SPF, EXP and REX Formats
- Flat – or Multi-Segmented Linking
- Compatible with most Real-TimeKernels

Link&Locate is an advanced absolute linker and locator for 32-bit Protected-Mode as well as 16-bit Real- and Protected-Mode embedded development.

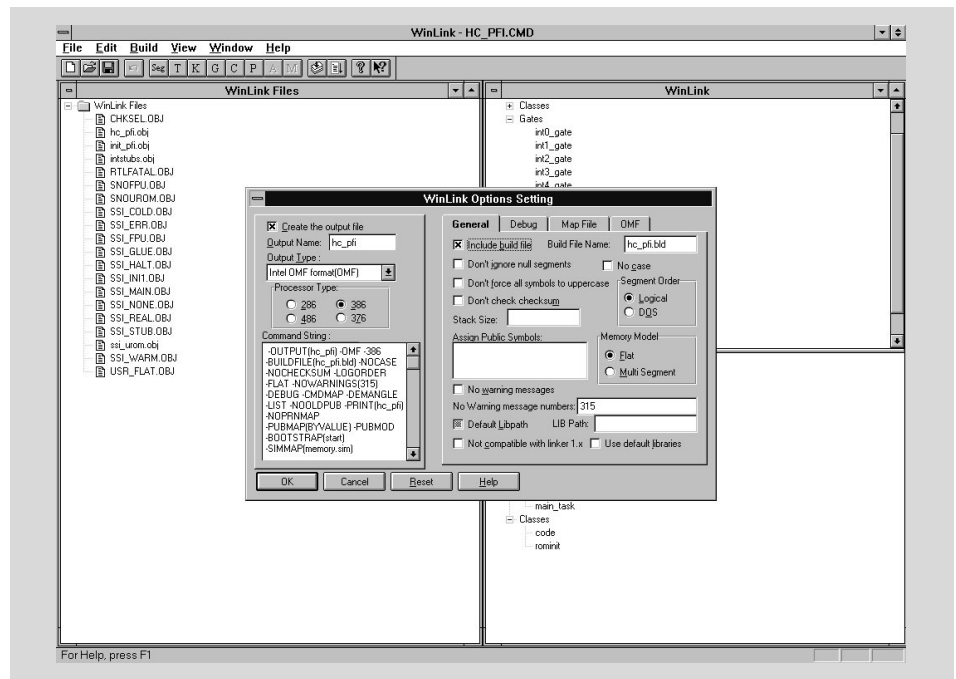
This powerful development tool accepts object files generated by the four most commonly used C/C++ Optimizing Compilers to generate absolute object files in the Intel OMF-86/286/386 format.

Link&Locate supports the building of programs for Intel's family of 80x86 and Pentium® processor embedded applications using C, C++ and/or Assembly.

Link&Locate supports the construction of flat- and multi-segmented programs and also provides extensive ROM-able code support, start-up code, C, C++ and floating-point examples, run-time library, floating-point support, debugging support and an extensive series of utilities.

Link&Locate is provided with executables for Windows NT, Windows 95 and DOS hosted development environments as well as a separate executable for real-mode only application development.

SSI also provides a powerful addition to Link&Locate in the form of WinLink. By combining Link&Locate and WinLink, this creates a tightly integrated, windows hosted, completely visual linker/locator offering advanced features as well as sig-



nificantly increased ease of use.

WinLink is an advanced visual command file builder designed to operate in conjunction with Link&Locate in the development of protected-mode embedded applications. WinLink provides a Windows interface along with a number of significant features to our industry leading Link&Locate.

Using WinLink will greatly simplify the development of protected-mode embedded applications by eliminating many of the syntax, ordering, addressing and incompatibility errors. Truly, this product is the first step to offering a smart linker for embedded application development.

HOST SYSTEMS SUPPORTED:
Windows NT, Windows 95, DOS
(Without WinLink)

PROCESSORS SUPPORTED:
80186, 80C186, 80C186XL/EA/EB/EC,
80188, 80C188XL/EA/EB/EC,
801186EB/EC, 801188EB/EC Intel386™
EX/CX/DX/SX, Intel486™ DX2/DX4/
SX/GX and Pentium® processors

AVAILABILITY:
Now

CONTACT:
Systems & Software, Inc
18012 Cowan, Suite 100
Irvine, CA 92614
Phone: (800) 788-4386
(714) 833-1700
FAX: (714) 833-1900
e-mail: sales@ssi.com
BBS: (714) 833-8152
WWW: <http://www.ssi.com>