

NOTES

1. REFER TO APPLICABLE SYMBOL LIST.
2. DIMENSIONING AND TOLERANCING PER ANSI Y14.5M, 1982.
3. CONTROLLING DIMENSION: MILLIMETERS.
4. DIMENSION S APPLIES AT BOTH ENDS.

VARIATIONS (ALL DIMENSIONS SHOWN IN MILLIMETERS)

SYMBOL												
	AA		NOTE	AB		NOTE			NOTE			NOTE
	MIN.	MAX.		MIN.	MAX.		MIN.	MAX.		MIN.	MAX.	
A	0.80	1.27		0.89	1.12							
A ₁	0.10	0.25		0.013	0.10							
B	0.37	0.51		0.37	0.51							
C	0.085	0.18		0.085	0.18							
D	2.80	3.04		2.80	3.04							
E	1.20	1.40		1.20	1.40							
e	0.89	1.03		0.89	1.03							
e ₁	1.78	2.05		1.78	2.05							
H	2.10	2.64		2.10	2.64							
L	0.69	REF		0.69	REF							
S	0.45	0.60	4	0.45	0.60	4						
NOTE	1, 2, 3			1, 2, 3								
REF	ITEM 97			ITEMS 114, 329								
ISSUE	AUG 1980			NOV 1982, MAY 1993								

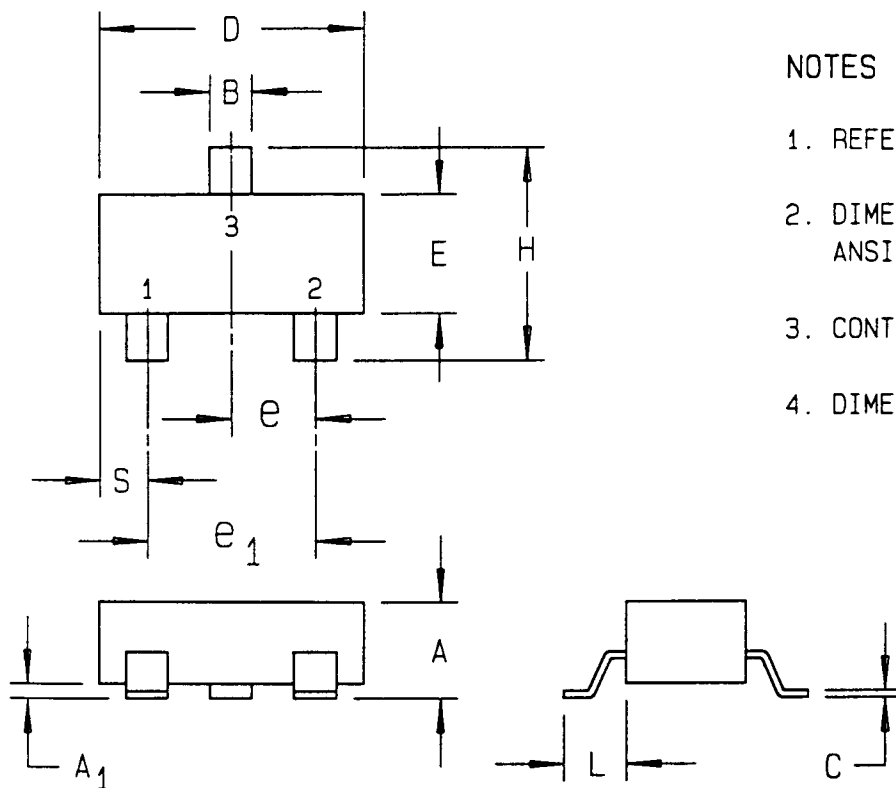
JEDEC
SOLID STATE PRODUCT
OUTLINES

TITLE
HEADER FAMILY
(PERIPHERAL TERMINALS)

ISSUE
G

DATE
JULY
1993

T0-236



NOTES

1. REFER TO APPLICABLE SYMBOL LIST.
2. DIMENSIONING AND TOLERANCING PER ANSI Y14.5M, 1982.
3. CONTROLLING DIMENSION: MILLIMETERS.
4. DIMENSION S APPLIES AT BOTH ENDS.

SYMBOL	VARIATIONS (ALL DIMENSIONS SHOWN IN INCHES)																	
	AA		NOTE	AB		NOTE			NOTE			NOTE						
	MIN.	MAX.		MIN.	MAX.		MIN.	MAX.		MIN.	MAX.							
A	0.031	0.050		0.035	0.044													
A ₁	0.004	0.010		0.0005	0.004													
B	0.015	0.020		0.015	0.020													
C	0.003	0.007		0.003	0.007													
D	0.110	0.120		0.110	0.120													
E	0.047	0.055		0.047	0.055													
e	0.035	0.040		0.035	0.040													
e ₁	0.070	0.080		0.070	0.080													
H	0.083	.1039		0.083	.1039													
L	0.027	REF		0.027	REF													
S	0.018	0.024	4	0.018	0.024	4												
NOTE	1, 2, 3			1, 2, 3														
REF	ITEM 97			ITEM 114														
ISSUE	AUG 1980			NOV 1982														
JEDEC SOLID STATE PRODUCT OUTLINES				TITLE HEADER FAMILY (PERIPHERAL TERMINALS)				ISSUE G		DATE JULY 1993		T0-236						