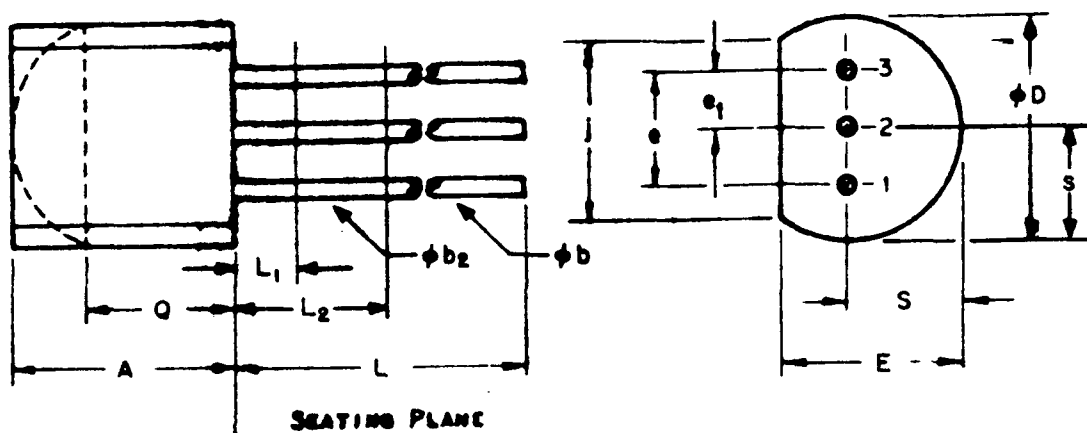


TO-92



SYMBOL	INCHES		MILLIMETERS		NOTES
	MIN.	MAX.	MIN.	MAX.	
A	.170	.210	4.58	5.33	
ϕb	.016	.021	.407	.533	1, 3
ϕb_2	.016	.019	.407	.482	3
ϕD	.175	.205	4.96	5.20	
E	.125	.165	3.94	4.19	
e	.095	.105	2.42	2.66	
e_1	.045	.055	1.15	1.39	
j	.135		3.43		
L	.500		12.70		1, 3
L_1		.050		1.27	3
L_2	.250		6.35		3
Q	.115		2.93		2
S	.080	.105	2.42	2.66	

NOTES:

1. THREE LEADS
2. CONTOUR OF THE PACKAGE BEYOND THIS ZONE IS UNCONTROLLED.
3. (THREE LEADS) ϕb_2 APPLIES BETWEEN L_1 AND L_2 . ϕb APPLIES BETWEEN L_2 AND .5" (12.70 MM) FROM SEATING PLANE. DIAMETER IS UNCONTROLLED IN L_1 AND BEYOND .5" (12.70 MM) FROM SEATING PLANE.