

## EPROM Memory Programming Specification

This document includes the programming specifications for the following devices:

- PIC17C42
- PIC17C43
- PIC17C42A
- PIC17CR43
- PIC17CR42
- PIC17C44

### 1.0 PROGRAMMING THE PIC17CXX

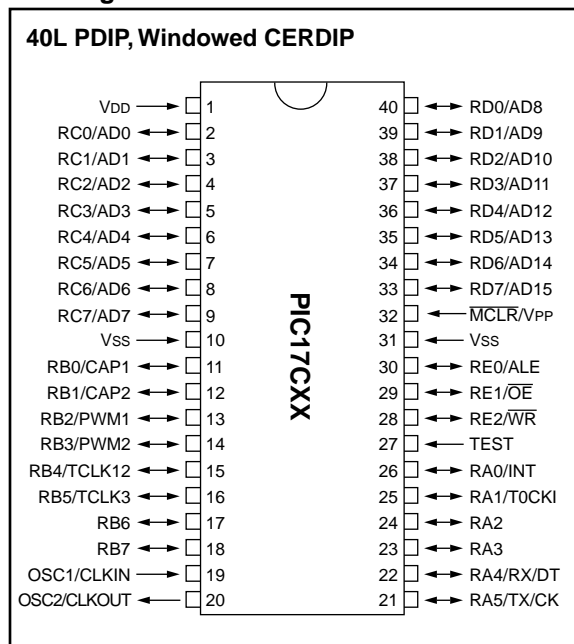
The PIC17CXX is programmed using the TABLWT instruction. The table pointer points to the internal EPROM location start. Therefore, a user can program an EPROM location while executing code (even from internal EPROM). This programming specification applies to PIC17CXX devices in all packages.

For the convenience of a programmer developer, a "program & verify" routine is provided in the on-chip test program memory space, the program resides in ROM and not EPROM. Therefore, it is not erasable. The "program/verify" routine allows the user to load any address, program a location, verify a location or increment to the next location. It allows variable programming pulse width.

#### 1.1 Hardware Requirements

Since the PIC17CXX under programming is actually executing code from "boot ROM," a clock must be provided to the part. Furthermore, the PIC17CXX under programming may have any oscillator configuration (EC, XT, LF or RC). Therefore, the external clock driver must be able to overdrive pulldown in RC mode. CMOS drivers are required since the OSC1 input has a Schmitt trigger input with levels (typically) of 0.2V<sub>DD</sub> and 0.8V<sub>DD</sub>. See the PIC17C4X data sheet (DS30412A) for exact specifications.

### Pin Diagram



The PIC17CXX requires two programmable power supplies, one for V<sub>DD</sub> (2.5V to 6.0V recommended) and one for V<sub>PP</sub> (13 ± 0.25V). Both supplies should have a minimum resolution of 0.25V.

The PIC17CXX uses an intelligent algorithm. The algorithm calls for program verification at V<sub>DDmin</sub> as well as V<sub>DDmax</sub>. Verification at V<sub>DDmin</sub> guarantees good "erase margin". Verification at V<sub>DDmax</sub> guarantees good "program margin". Three times (3X) additional pulses will increase program margin then beyond V<sub>DD</sub> (max.) and insure safe operation in user system.

### PIN DESCRIPTIONS (DURING PROGRAMMING): PIC17C42/42A/43/44

Pin Name	During Programming		
	Pin Name	Pin Type	Pin Description
RA <0:4>	RA <0:4>	I	Necessary in programming mode
TEST	TEST	I	Must be set to "high" to enter programming mode
RB <7:0>	PAD <15:8>	I/O	Address & data: high byte
RC <7:0>	PAD <7:0>	I/O	Address & data: low byte
MCLR/VPP	VPP	P	Programming Power
VDD	VDD	P	Power Supply
VSS	VSS	P	Ground

Legend: I = Input, O = Output, P = Power

# PIC17CXX

The actual programming must be done with VDD in the VDDP range (4.75 - 5.25V).

VDDP=VDD range required during programming.

VDD min.=minimum operating VDD spec for the part.

VDD max.=maximum operating VCC spec for the part.

Programmers must verify the PIC17CXX at its specified VDDmax and VDDmin levels. Since Microchip may introduce future versions of the PIC17CXX with a broader VDD range, it is best that these levels are user selectable (defaults are ok).

**Note:** Any programmer not meeting these requirements may only be classified as "prototype" or "development" programmer but not a "production" quality programmer.

## 2.0 PROGRAM MODE ENTRY

To execute the programming routine, the user must hold TEST pin high, RA2, RA3 must be low and RA4 must be high (after power-up) while keeping  $\overline{\text{MCLR}}$  low and then raise  $\overline{\text{MCLR}}$  pin from  $V_{IL}$  to VDD or VPP. This will force FFE0h in the program counter and execution will begin at that location (the beginning of the boot code) following reset. Execution is forced to Internal mode by overriding the fuse configuration. The code protect bit is not overwritten. The program immediately polls PORT RB<7:0> to determine a branch address. Presenting E1h on PORT RB will cause the program to jump to and execute the "program/verify" routine.

**Note:** The OSC must not have 72 osc clocks while the device  $\overline{\text{MCLR}}$  is between  $V_{IL}$  and  $V_{IH}$ .

All unused pins during programming are in high impedance state.

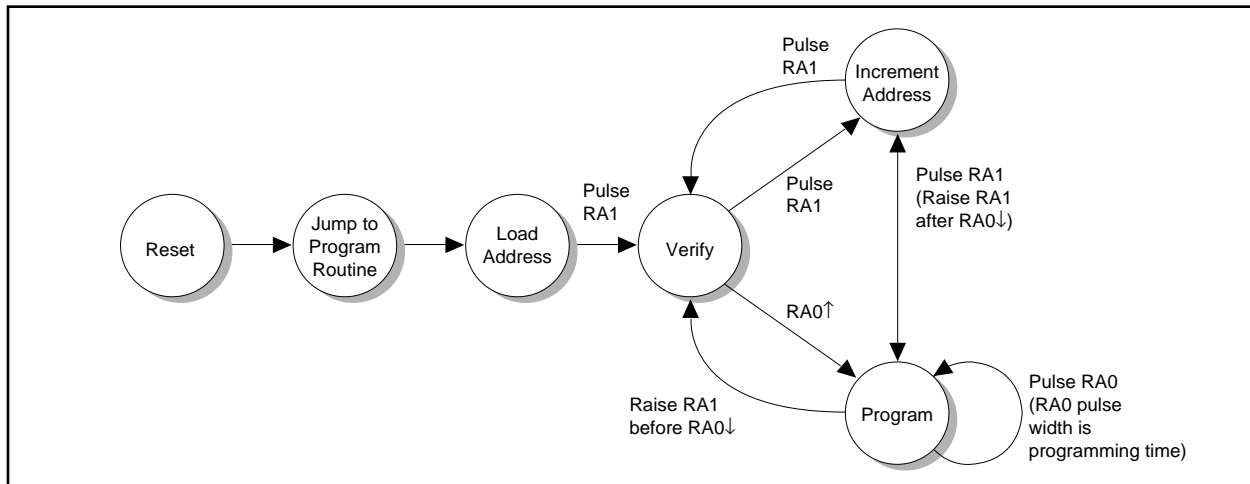
PORTB (RB) has internal weak pull-ups which are active during the programming mode. When TEST pin is high, Power-up timer (PWRT) and Oscillator Start-up Timers (OST) are disabled.

## 2.1 Program/Verify Mode

The program/verify mode is intended for full-feature programmers. This mode offers the following capabilities:

- Load any arbitrary 16-bit address to start program and/or verify at that location.
- Increment address to program/verify the next location.
- Allows arbitrary length programming pulse width.
- Following a "verify" allows option to program the same location or increment and verify the next location.
- Following a "program" allows options to program the same location again, verify the same location or to increment and verify the next location.

FIGURE 2-1: PROGRAMMING/VERIFY STATE DIAGRAM



# EPROM Memory Programming Specification

## 2.1.1 LOADING NEW ADDRESS

The program allows new address to be loaded right out of reset. A 16-bit address is presented on ports RB (high byte) and RC (low byte) and the RA1 is pulsed (0 → 1, then 1 → 0). The address is latched on the rising edge of RA1. See timing diagrams for details. After loading an address, the program automatically goes into a “verify cycle”. To load a new address at any time, the PIC17C4X must be reset and the programming mode re-entered.

## 2.1.2 VERIFY (OR READ) MODE

“Verify mode” can be entered from “Load address” mode, “program mode” or “verify mode”. In verify mode pulsing RA1 will turn on PORTS RB and RC output drivers and output the 16-bit value from the current location. Pulsing RA1 again will increment location count and be ready for the next verify cycle. Pulsing RA0 will begin a program cycle.

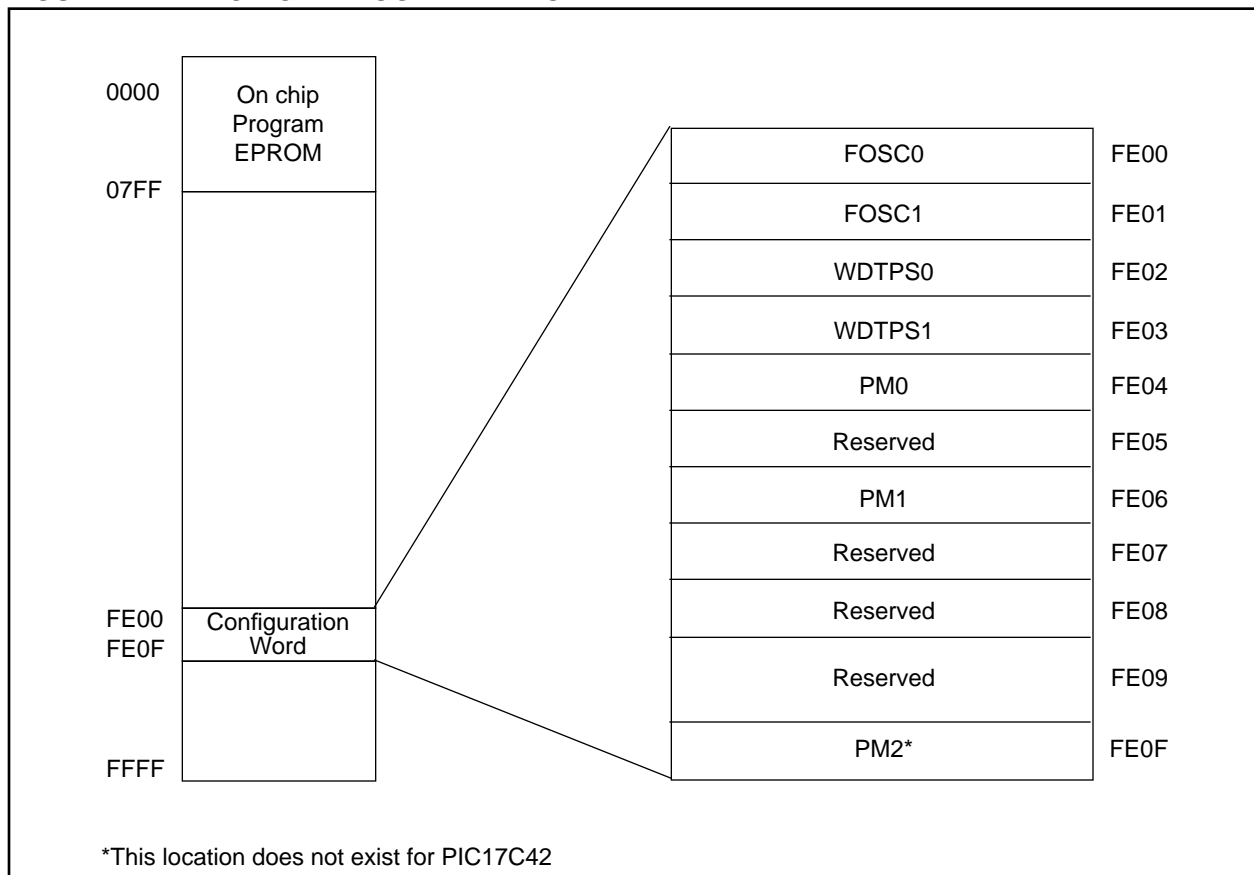
## 2.1.3 PROGRAM CYCLE

“Program cycle” is entered from “verify cycle” or “program cycle” itself. After a verify, pulsing RA0 will begin a program cycle. 16-bit data must be presented on PORTS RB (high byte) and RC (low byte) before RA0 is raised.

The data is sampled 3 T<sub>cy</sub> cycles after the rising edge of RA0. Programming continues for the duration of RA0 pulse.

At the end of programming the user can choose one of three different routes. If RA1 is kept low and RA0 is pulsed again, the same location will be programmed again. This is useful for applying over programming pulses. If RA1 is raised before RA0 falling edge, then a verify cycle is started without address increment. Raising RA1 after RA0 goes low will increment address and begin verify cycle on the next address.

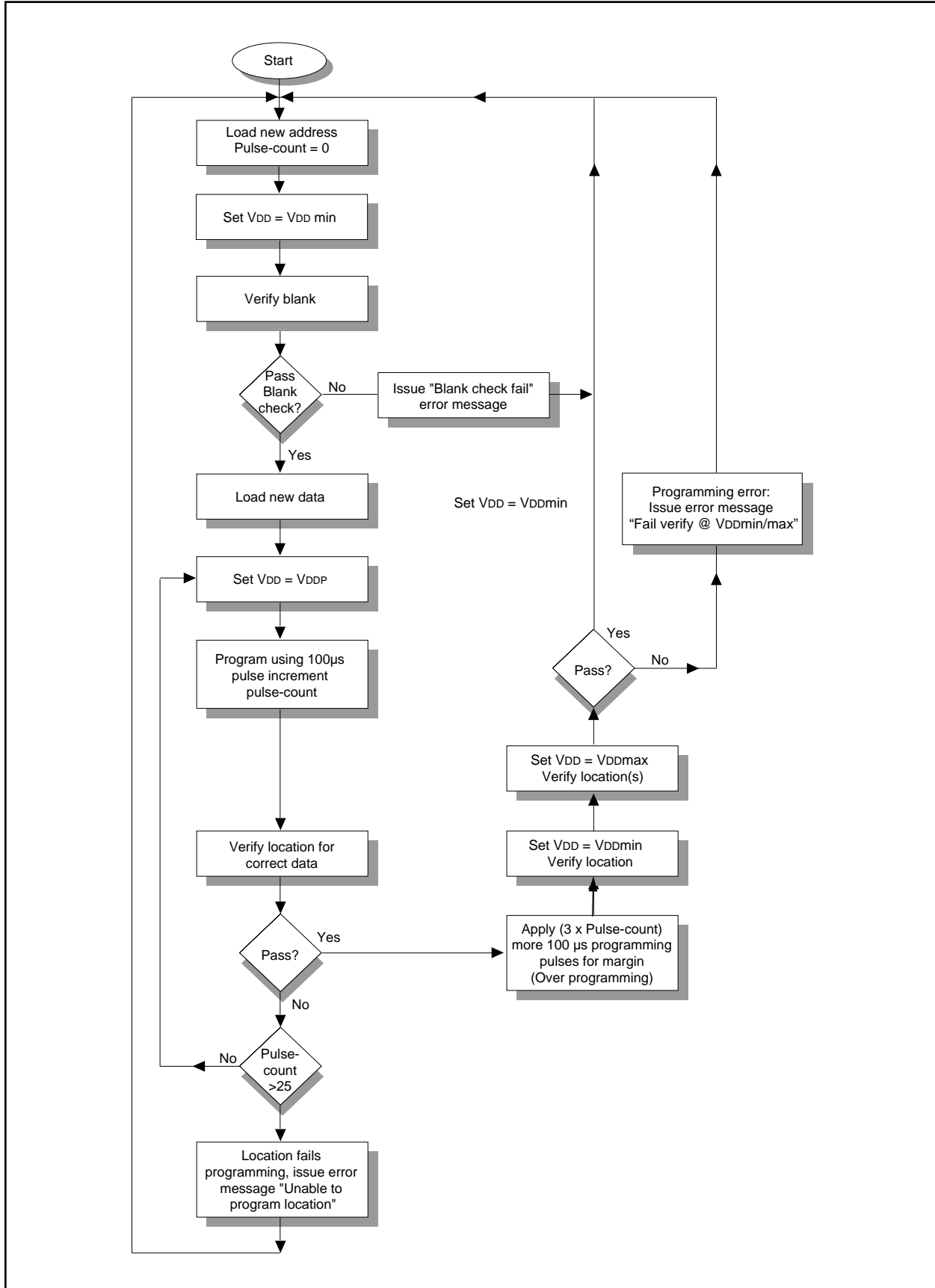
**FIGURE 2-2: PIC17C4X PROGRAM MEMORY MAP**



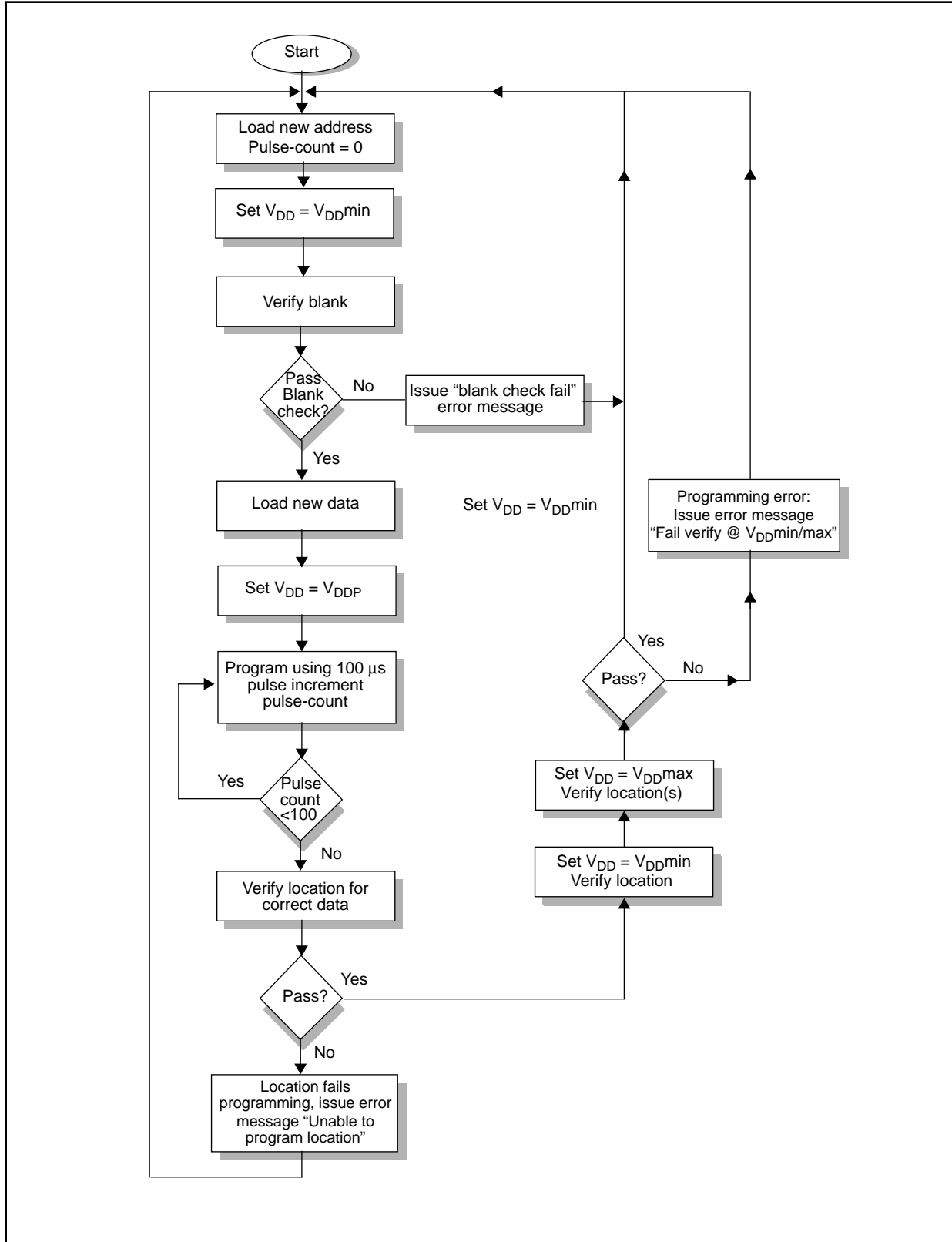


# EPROM Memory Programming Specification

FIGURE 3-2: RECOMMENDED PROGRAMMING ALGORITHM FOR USER EPROM



**FIGURE 3-3: RECOMMENDED PROGRAMMING ALGORITHM FOR CONFIGURATION WORDS**



# EPROM Memory Programming Specification

## 4.0 CONFIGURATION WORD

Configuration bits are mapped into program memory. Each bit is assigned one memory location. In erased condition a bit will read as '1'. To program a bit, the user needs to write to the memory address. The data is immaterial; the very act of writing will program the bit. The configuration word locations are shown in Table 4-3. **The programmer should not program the reserved locations to avoid unpredictable results and to be compatible with future variations of the PIC17C4X. It is also mandatory that configuration locations are programmed in the strict order starting from the first location (0xFE00) and ending with the last (0xFE0F). Unpredictable results may occur if the sequence is violated.**

### 4.1 Reading Configuration Word

The PIC17CXX has seven configuration locations (see Table 4-1). These locations can be programmed (read as '0') or left unprogrammed (read as '1') to select various device configurations. Any write to a configuration location, regardless of the data, will program that configuration bit. Reading any configuration location between 0xFE00 and 0xFE07 will place the low byte of the configuration word (see Table 4-2) into PAD<7:0>

(PORTC). PAD<15:8> (PORTB) will be set to 0xFF. Reading a configuration location between 0xFE08 and 0xFE0F will place the high byte of the configuration word into PAD<7:0> (PORTC). PAD<15:8> (PORTB) will be set to 0xFF.

**TABLE 4-1: CONFIGURATION BIT PROGRAMMING LOCATIONS**

Bit	Address
FOSC0	0xFE00
FOSC1	0xFE01
WDTPS0	0xFE02
WDTPS1	0xFE03
PM0	0xFE04
PM1	0xFE06
PM2 <sup>†</sup>	0xFE0F

<sup>†</sup>This location does not exist on the PIC17C42.

**TABLE 4-2: READ MAPPING OF CONFIGURATION BITS**

15	14	13	12	11	10	9	8	7	6	5	4	3	2	1	0
1	1	1	1	1	1	1	1	—	PM1	—	PM0	WDTPS1	WDTPS0	FOSC1	FOSC0
15	14	13	12	11	10	9	8	7	6	5	4	3	2	1	0
1	1	1	1	1	1	1	1	PM2*	—	—	—	—	—	—	—

—=Unused

**PM<2:0>**, Processor Mode Select bits

- 111 = Microprocessor mode
- 110 = Microcontroller mode
- 101 = Extended Microcontroller mode
- 000 = Code protected microcontroller mode

**WDTPS<1:0>**, WDT Prescaler Select bits.

- 11 = WDT enabled, postscaler = 0
- 10 = WDT enabled, postscaler = 256
- 01 = WDT enabled, postscaler = 64
- 00 = WDT disabled, 16-bit overflow timer

**FOSC<1:0>**, Oscillator Select bits

- 11 = EC oscillator
- 10 = XT oscillator
- 01 = RC oscillator
- 00 = LF oscillator

\* This bit does not exist on PIC17C42.

# PIC17CXX

## 4.2 Embedding Configuration Word Information in the Hex File

To allow portability of code, a PIC17C4X programmer is required to read the configuration word locations from the hex file when loading the hex file. If configuration word information was not present in the hex file then a simple warning message may be issued. Similarly, while saving a hex file, all configuration word information must be included. An option to not include the configuration word information may be provided. When embedding configuration word information in the hex file, it should be to address FE00h.

Microchip Technology Inc. feels strongly that this feature is important for the benefit of the end customer.

**TABLE 4-3: CONFIGURATION WORD**

### PIC17C42

To code protect:

- Protect all memory `XXXXXXXXX0X0XXXX`

Program Memory Segment	R/W in Protected Mode	R/W in Unprotected Mode
Configuration Word (0xFE00)	Read Scrambled, Write Enabled	Read Unscrambled, Write Enabled
All memory	Read Scrambled, Write Disabled*	Read Unscrambled, Write Enabled

### PIC17C42A

To code protect:

- Protect all memory `0XXXXXXXXX0X0XXXX`

Program Memory Segment	R/W in Protected Mode	R/W in Unprotected Mode
Configuration Word (0xFE00)	Read Scrambled, Write Enabled	Read Unscrambled, Write Enabled
All memory	Read Scrambled, Write Disabled*	Read Unscrambled, Write Enabled

### PIC17CR42

To code protect:

- Protect all memory `0XXXXXXXXX0X0XXXX`

Program Memory Segment	R/W in Protected Mode	R/W in Unprotected Mode
Configuration Word (0xFE00)	Read Scrambled, Write Enabled	Read Unscrambled, Write Enabled
All memory	Read Scrambled, Write Disabled*	Read Unscrambled, Write Enabled

### PIC17C43

To code protect:

- Protect all memory `0XXXXXXXXX0X0XXXX`

Program Memory Segment	R/W in Protected Mode	R/W in Unprotected Mode
Configuration Word (0xFE00)	Read Scrambled, Write Enabled	Read Unscrambled, Write Enabled
All memory	Read Scrambled, Write Disabled*	Read Unscrambled, Write Enabled

### PIC17CR43

To code protect:

- Protect all memory `0XXXXXXXXX0X0XXXX`

Program Memory Segment	R/W in Protected Mode	R/W in Unprotected Mode
Configuration Word (0xFE00)	Read Scrambled, Write Enabled	Read Unscrambled, Write Enabled
All memory	Read Scrambled, Write Disabled*	Read Unscrambled, Write Enabled

### PIC17C44

To code protect:

- Protect all memory `0XXXXXXXXX0X0XXXX`

Program Memory Segment	R/W in Protected Mode	R/W in Unprotected Mode
Configuration Word (0xFE00)	Read Scrambled, Write Enabled	Read Unscrambled, Write Enabled
All memory	Read Scrambled, Write Disabled*	Read Unscrambled, Write Enabled

Legend: X = Don't care

\*Write to on-chip EPROM memory is disabled. The only way these locations can be programmed is if a TABLWT instruction is issued from an "on-chip" program memory space to program an on-chip memory location.



# EPROM Memory Programming Specification

## 4.3 CHECKSUM COMPUTATION

The checksum is calculated by summing the following:

- The contents of all program memory locations
- The configuration word, appropriately masked
- Masked ID locations (when applicable)

The least significant 16 bits of this sum is the checksum.

The following table describes how to calculate the checksum for each device. Note that the checksum calculation differs depending on the code protect setting. Since the program memory locations read out differently depending on the code protect setting, the table describes how to manipulate the actual program memory values to simulate the values that would be read from a protected device. When calculating a checksum by reading a device, the entire program memory can simply be read and summed. The configuration word and ID locations can always be read.

Note that some older devices have an additional value added in the checksum. This is to maintain compatibility with older device programmer checksums.

**TABLE 4-4: CHECKSUM COMPUTATION**

Device	Code Protect	Checksum*	Blank Value	0xC0DE at 0 and max address
PIC17C42	MP mode	SUM[0x000:0x7FF] + CFGW & 0x005F + 0xFFA0	0xF7FF	0x79BD
	MC mode	SUM[0x000:0x7FF] + CFGW & 0x005F + 0xFFA0	0xF7EF	0x79AD
	EMC mode	SUM[0x000:0x7FF] + CFGW & 0x005F + 0xFFA0	0xF7BF	0x797D
	PMC mode	SUM_XNOR8[0x000:0x7FF] + CFGW & 0x005F + 0xFFA0	0xF7AF	0xBB73
PIC17C42A	MP mode	SUM[0x000:0x7FF] + CFGW & 0x015F	0xF95F	0x7B1D
	MC mode	SUM[0x000:0x7FF] + CFGW & 0x015F	0xF94F	0x7B0D
	EMC mode	SUM[0x000:0x7FF] + CFGW & 0x015F	0xF91F	0x7ADD
	PMC mode	SUM_XNOR8[0x000:0x7FF] + CFGW & 0x015F	0xF80F	0xBBD3
PIC17CR42	MP mode	SUM[0x000:0x7FF] + CFGW & 0x015F	0xF95F	0x7B1D
	MC mode	SUM[0x000:0x7FF] + CFGW & 0x015F	0xF94F	0x7B0D
	EMC mode	SUM[0x000:0x7FF] + CFGW & 0x015F	0xF91F	0x7ADD
	PMC mode	SUM_XNOR8[0x000:0x7FF] + CFGW & 0x015F	0xF80F	0xBBD3
PIC17C43	MP mode	SUM[0x000:0xFFF] + CFGW & 0x015F	0xF15F	0x731D
	MC mode	SUM[0x000:0xFFF] + CFGW & 0x015F	0xF14F	0x730D
	EMC mode	SUM[0x000:0xFFF] + CFGW & 0x015F	0xF11F	0x72DD
	PMC mode	SUM_XNOR8[0x000:0xFFF] + CFGW & 0x015F	0xF00F	0xB3D3
PIC17CR43	MP mode	SUM[0x000:0xFFF] + CFGW & 0x015F	0xF15F	0x731D
	MC mode	SUM[0x000:0xFFF] + CFGW & 0x015F	0xF14F	0x730D
	EMC mode	SUM[0x000:0xFFF] + CFGW & 0x015F	0xF11F	0x72DD
	PMC mode	SUM_XNOR8[0x000:0xFFF] + CFGW & 0x015F	0xF00F	0xB3D3
PIC17C44	MP mode	SUM[0x000:0x1FFF] + CFGW & 0x015F	0xE15F	0x631D
	MC mode	SUM[0x000:0x1FFF] + CFGW & 0x015F	0xE14F	0x630D
	EMC mode	SUM[0x000:0x1FFF] + CFGW & 0x015F	0xE11F	0x62DD
	PMC mode	SUM_XNOR8[0x000:0x1FFF] + CFGW & 0x015F	0xE00F	0xA3D3

Legend: CFGW = Configuration Word

SUM[a:b] = [Sum of locations a to b inclusive]

SUM\_XNOR8(a:b) = [Sum of 8-bit wide XNOR copied into upper and lower byte, of locations a to b inclusive]

\*Checksum = [Sum of all the individual expressions] **MODULO** [0xFFFF]

+ = Addition

& = Bitwise AND

## 5.0 AC/DC CHARACTERISTICS TIMING REQUIREMENTS FOR PROGRAM/VERIFY TEST MODE

Standard Operating Conditions							
Operating Temperature: $+10^{\circ}\text{C} \leq T_A \leq +70^{\circ}\text{C}$ , unless otherwise stated, (25°C is recommended)							
Operating Voltage: $4.5\text{V} \leq V_{DD} \leq 5.25\text{V}$ , unless otherwise stated.							
Parameter No.	Sym.	Characteristic	Min.	Typ.	Max.	Units	Conditions/Comments
PD1	VDDP	Supply voltage during programming	4.75	5.0	5.25	V	
PD2	IDDP	Supply current during programming			50	mA	Freq = 10MHz, VDD = 5.5V Note 3
PD3	VDDV	Supply voltage during verify	VDD min.		VDD max.	V	Note 2
PD4	VPP	Voltage on VPP/MCLR pin during programming	12.75		13.25	V	Note 1
PD6	I <sub>PP</sub>	Programming current on VPP/MCLR pin		25	50	mA	Note 3
P1	FOSCP	Osc/clockin frequency during programming	4		10	MHz	
P2	T <sub>CY</sub>	Instruction cycle	1		0.4	μs	T <sub>CY</sub> = 4/FOSCP
P3	T <sub>irV2tsH</sub>	RA0, RA1, RA2, RA3, RA4 setup before TEST↑	1			μs	
P4	T <sub>tsH2mcH</sub>	TEST↑ to MCLR↑	1			μs	
P5	T <sub>bcV2irH</sub>	RC<7:0>, RB<7:0> valid to RA1 or RA0↑ :Address/Data input setup time	0			μs	
P6	T <sub>irH2bcl</sub>	RA1 or RA0↑ to RB<7:0>, RC<7:0> invalid ; Address data hold time;	10 T <sub>CY</sub>			μs	
P7	T <sub>0ckiL2rbcz</sub>	RT↓ to RB<7:0>, RC<7:0> high impedance			8 T <sub>CY</sub>		
P8	T <sub>0ckiH2bcv</sub>	RA1↑ to data out valid			10 T <sub>CY</sub>		
P9	T <sub>prog</sub>	Programming pulse width	10	100	1000	μs	
P10	T <sub>irH2irL</sub>	RA0, RA1 high pulse width	10 T <sub>CY</sub>			μs	
P11	T <sub>irL2irH</sub>	RA0, RA1 low pulse width	10 T <sub>CY</sub>			μs	
P12	T <sub>0ckiV2inL</sub>	RA1↑ before INT↓ (to go from prog cycle to verify w/o increment)	0			μs	
P13	T <sub>inL2rtl</sub>	RA1 valid after RA0 (to select increment or no increment going from program to verify cycle)	10 T <sub>CY</sub>			μs	
P14	T <sub>vpps</sub>	VPP setup time before RA0↑	100			μs	Note 1
P15	T <sub>vpph</sub>	VPP hold time after INT↓	0			μs	Note 1
P16	T <sub>vdV2tsH</sub>	VDD stable to TEST↑	10			ms	
P17	T <sub>rbV2mcH</sub>	RB input (E1h) valid to VPP/MCLR↑	0			μs	
P18	T <sub>mcH2rbl</sub>	RB input (E1h) hold after VPP/MCLR↑	10 T <sub>CY</sub>			ns	
P19	T <sub>vpL2vdL</sub>	VDD power down after VPP power down	10			ms	

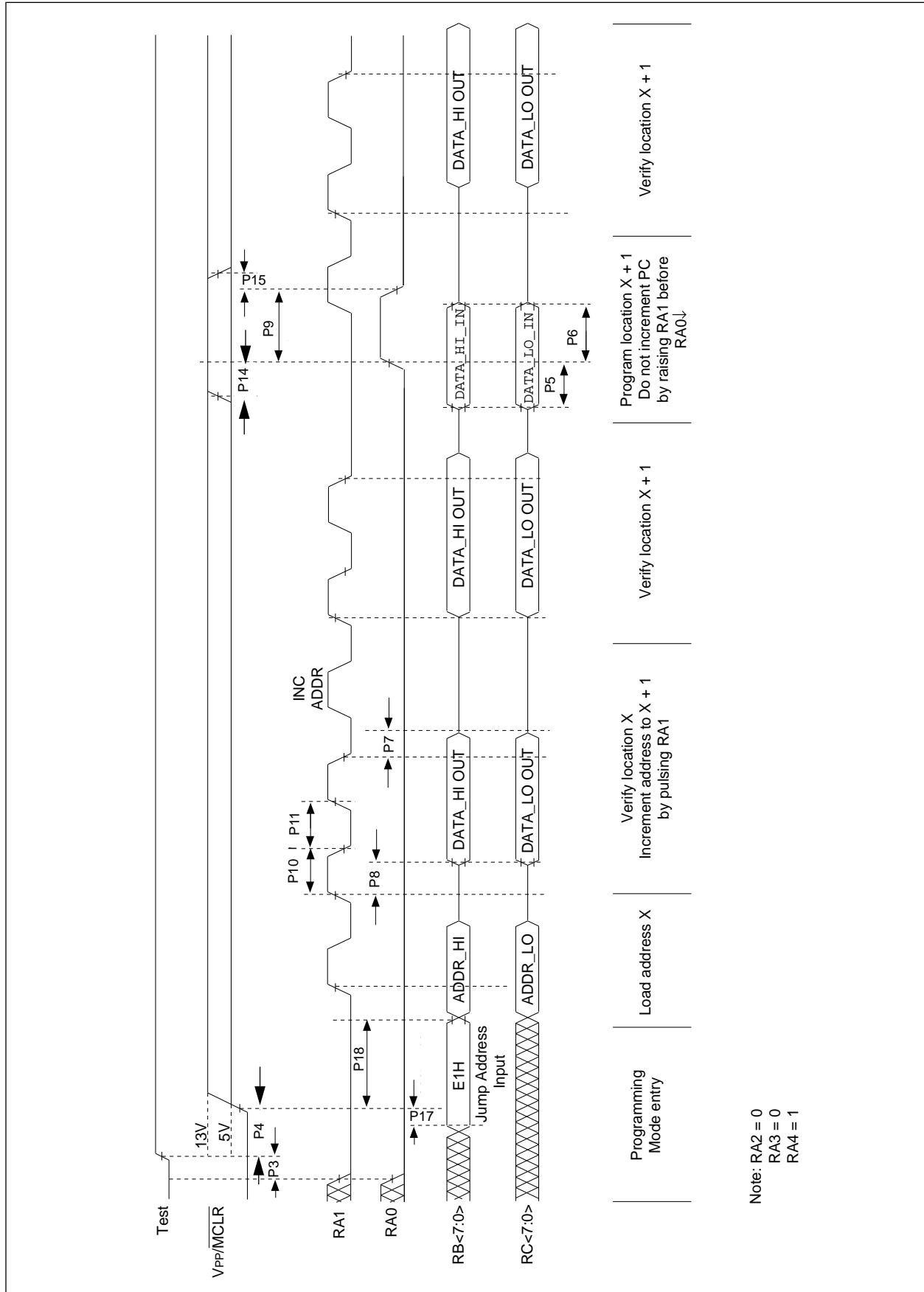
Note 1: VPP/MCLR pin must only be equal to or greater than VDD at times other than programming.

Note 2: Program must be verified at the minimum and maximum VDD limits for the part.

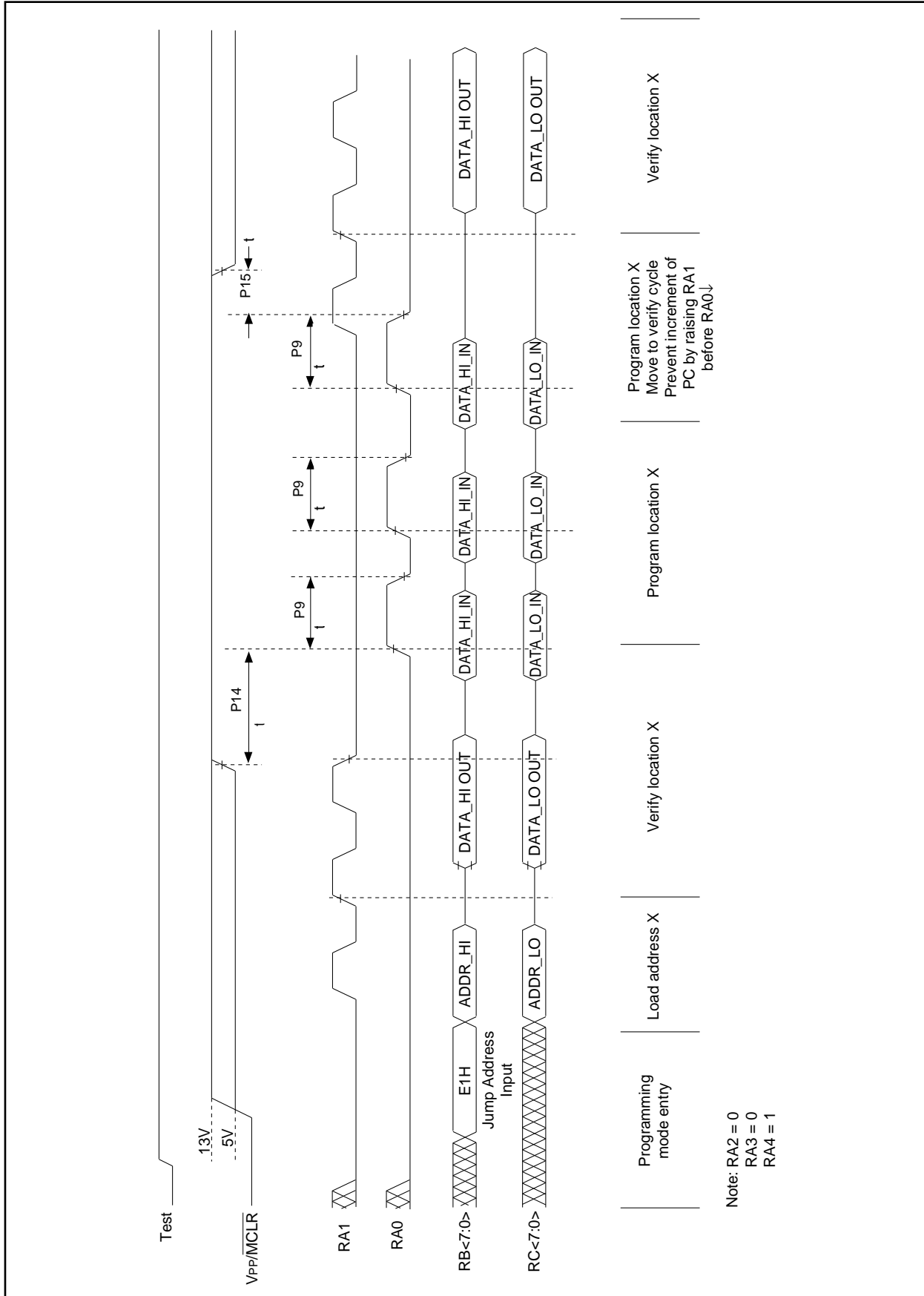
Note 3: These parameters are for design guidance only and are not tested nor characterized.

# EPROM Memory Programming Specification

FIGURE 5-1: PROGRAMMING AND VERIFY TIMINGS I

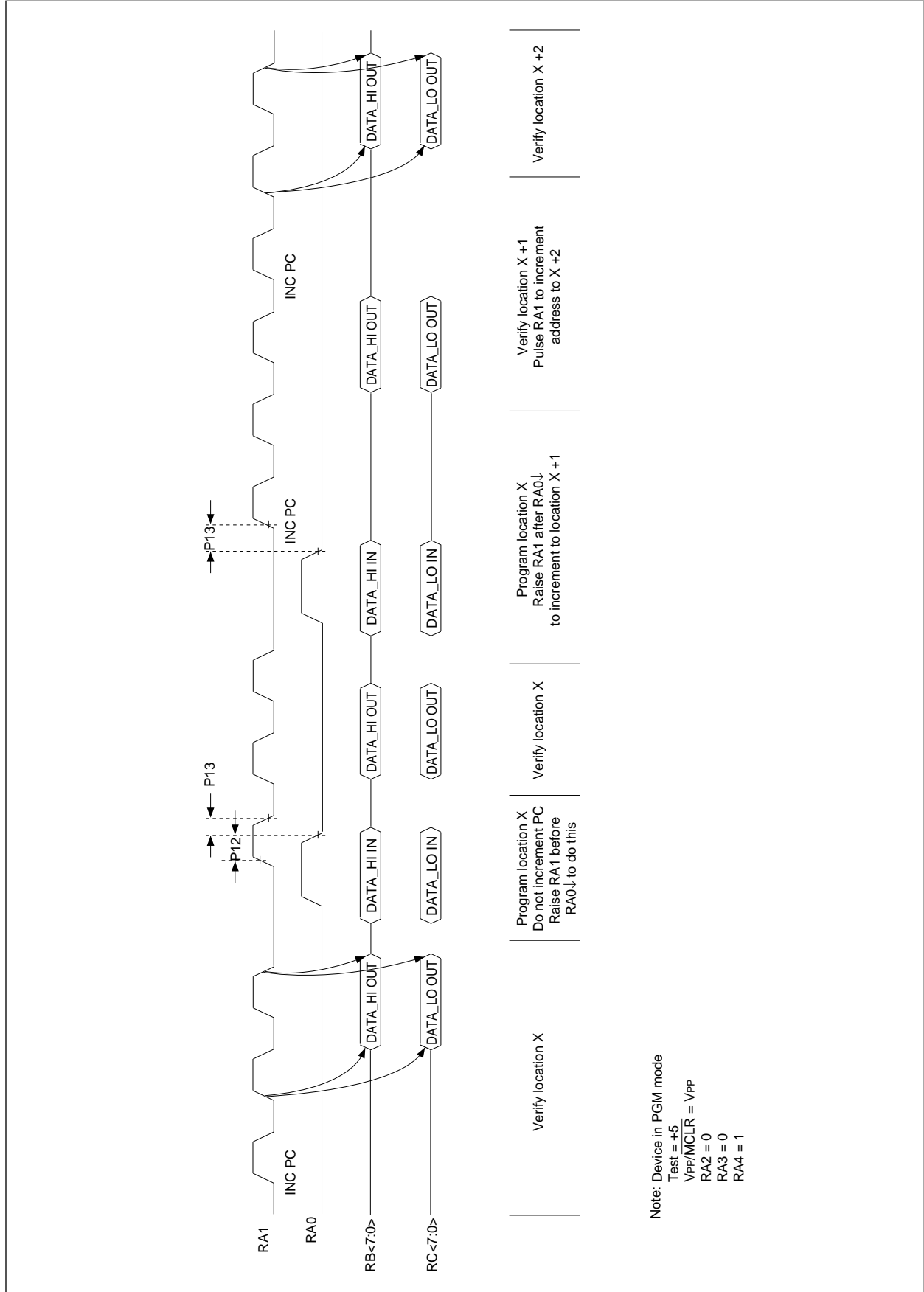


**FIGURE 5-2: PROGRAMMING AND VERIFY TIMINGS II**



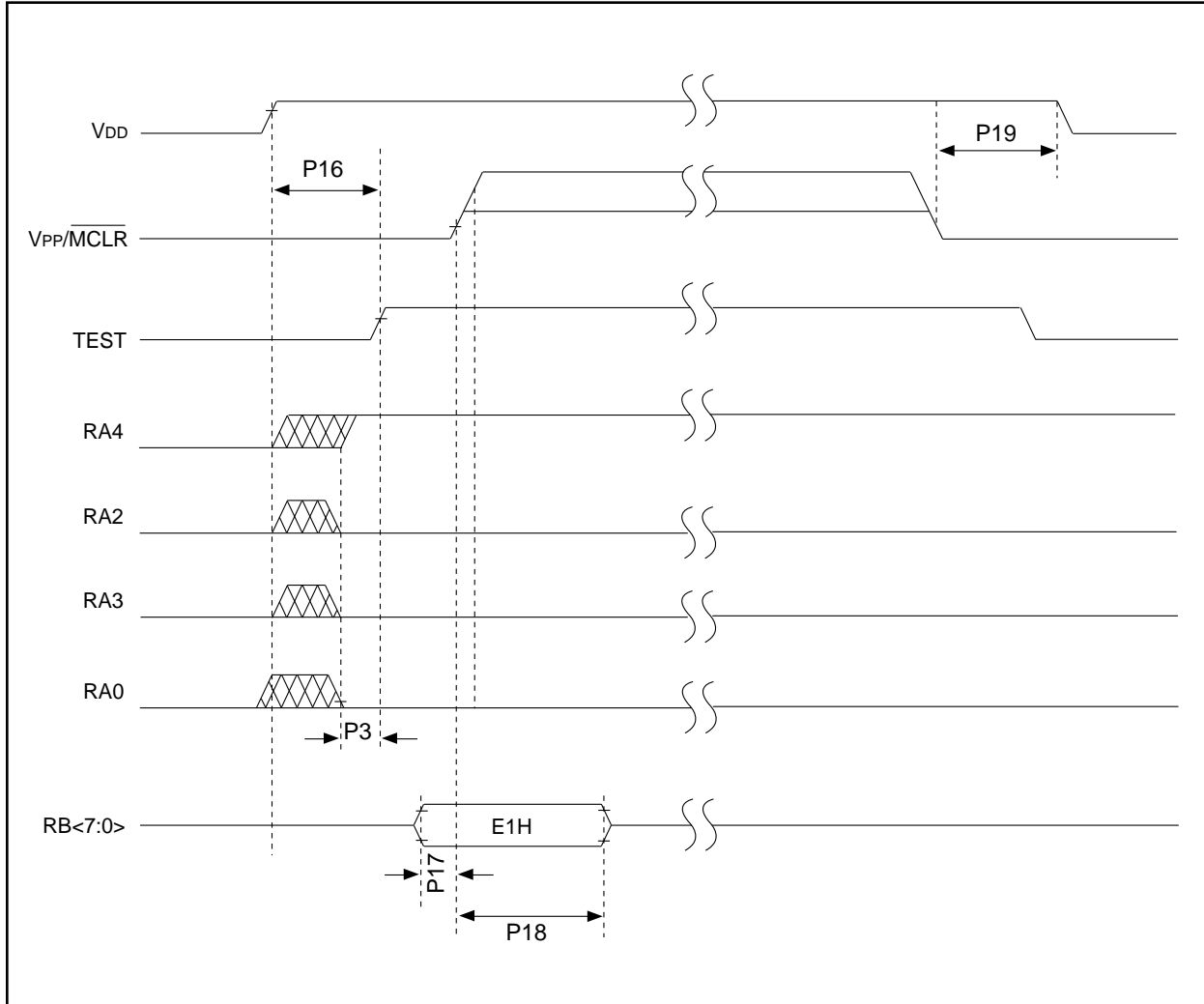
# EPROM Memory Programming Specification

FIGURE 5-3: PROGRAMMING AND VERIFY TIMINGS III



# PIC17CXX

FIGURE 5-4: POWER-UP/DOWN SEQUENCE FOR PROGRAMMING



# EPROM Memory Programming Specification

NOTES:



## WORLDWIDE SALES AND SERVICE

### AMERICAS

#### Corporate Office

Microchip Technology Inc.  
2355 West Chandler Blvd.  
Chandler, AZ 85224-6199  
Tel: 480-786-7200 Fax: 480-786-7277  
Technical Support: 480-786-7627  
Web Address: <http://www.microchip.com>

#### Atlanta

Microchip Technology Inc.  
500 Sugar Mill Road, Suite 200B  
Atlanta, GA 30350  
Tel: 770-640-0034 Fax: 770-640-0307

#### Boston

Microchip Technology Inc.  
5 Mount Royal Avenue  
Marlborough, MA 01752  
Tel: 508-480-9990 Fax: 508-480-8575

#### Chicago

Microchip Technology Inc.  
333 Pierce Road, Suite 180  
Itasca, IL 60143  
Tel: 630-285-0071 Fax: 630-285-0075

#### Dallas

Microchip Technology Inc.  
4570 Westgrove Drive, Suite 160  
Addison, TX 75248  
Tel: 972-818-7423 Fax: 972-818-2924

#### Dayton

Microchip Technology Inc.  
Two Prestige Place, Suite 150  
Miamisburg, OH 45342  
Tel: 937-291-1654 Fax: 937-291-9175

#### Detroit

Microchip Technology Inc.  
Tri-Atria Office Building  
32255 Northwestern Highway, Suite 190  
Farmington Hills, MI 48334  
Tel: 248-538-2250 Fax: 248-538-2260

#### Los Angeles

Microchip Technology Inc.  
18201 Von Karman, Suite 1090  
Irvine, CA 92612  
Tel: 949-263-1888 Fax: 949-263-1338

#### New York

Microchip Technology Inc.  
150 Motor Parkway, Suite 202  
Hauppauge, NY 11788  
Tel: 631-273-5305 Fax: 631-273-5335

#### San Jose

Microchip Technology Inc.  
2107 North First Street, Suite 590  
San Jose, CA 95131  
Tel: 408-436-7950 Fax: 408-436-7955

### AMERICAS (continued)

#### Toronto

Microchip Technology Inc.  
5925 Airport Road, Suite 200  
Mississauga, Ontario L4V 1W1, Canada  
Tel: 905-405-6279 Fax: 905-405-6253

### ASIA/PACIFIC

#### Hong Kong

Microchip Asia Pacific  
Unit 2101, Tower 2  
Metroplaza  
223 Hing Fong Road  
Kwai Fong, N.T., Hong Kong  
Tel: 852-2-401-1200 Fax: 852-2-401-3431

#### Beijing

Microchip Technology, Beijing  
Unit 915, 6 Chaoyangmen Bei Dajie  
Dong Erhuan Road, Dongcheng District  
New China Hong Kong Manhattan Building  
Beijing 100027 PRC  
Tel: 86-10-85282100 Fax: 86-10-85282104

#### India

Microchip Technology Inc.  
India Liaison Office  
No. 6, Legacy, Convent Road  
Bangalore 560 025, India  
Tel: 91-80-229-0061 Fax: 91-80-229-0062

#### Japan

Microchip Technology Intl. Inc.  
Benex S-1 6F  
3-18-20, Shinyokohama  
Kohoku-Ku, Yokohama-shi  
Kanagawa 222-0033 Japan  
Tel: 81-45-471-6166 Fax: 81-45-471-6122

#### Korea

Microchip Technology Korea  
168-1, Youngbo Bldg. 3 Floor  
Samsung-Dong, Kangnam-Ku  
Seoul, Korea  
Tel: 82-2-554-7200 Fax: 82-2-558-5934

#### Shanghai

Microchip Technology  
RM 406 Shanghai Golden Bridge Bldg.  
2077 Yan'an Road West, Hong Qiao District  
Shanghai, PRC 200335  
Tel: 86-21-6275-5700 Fax: 86 21-6275-5060

### ASIA/PACIFIC (continued)

#### Singapore

Microchip Technology Singapore Pte Ltd.  
200 Middle Road  
#07-02 Prime Centre  
Singapore 188980  
Tel: 65-334-8870 Fax: 65-334-8850

#### Taiwan, R.O.C

Microchip Technology Taiwan  
10F-1C 207  
Tung Hua North Road  
Taipei, Taiwan, ROC  
Tel: 886-2-2717-7175 Fax: 886-2-2545-0139

### EUROPE

#### United Kingdom

Arizona Microchip Technology Ltd.  
505 Eskdale Road  
Wokingham  
Berkshire, England RG41 5TU  
Tel: 44 118 921 5858 Fax: 44-118 921-5835

#### Denmark

Microchip Technology Denmark ApS  
Regus Business Centre  
Lautrup hof 1-3  
Ballerup DK-2750 Denmark  
Tel: 45 4420 9895 Fax: 45 4420 9910

#### France

Arizona Microchip Technology SARL  
Parc d'Activite du Moulin de Massy  
43 Rue du Saule Trapu  
Batiment A - 1er Etage  
91300 Massy, France  
Tel: 33-1-69-53-63-20 Fax: 33-1-69-30-90-79

#### Germany

Arizona Microchip Technology GmbH  
Gustav-Heinemann-Ring 125  
D-81739 München, Germany  
Tel: 49-89-627-144 0 Fax: 49-89-627-144-44

#### Italy

Arizona Microchip Technology SRL  
Centro Direzionale Colleoni  
Palazzo Taurus 1 V. Le Colleoni 1  
20041 Agrate Brianza  
Milan, Italy  
Tel: 39-039-65791-1 Fax: 39-039-6899883

11/15/99



Microchip received QS-9000 quality system certification for its worldwide headquarters, design and water fabrication facilities in Chandler and Tempe, Arizona in July 1999. The Company's quality system processes and procedures are QS-9000 compliant for its PICmicro® 8-bit MCUs, KEELOC® code hopping devices, Serial EEPROMs and microperipheral products. In addition, Microchip's quality system for the design and manufacture of development systems is ISO 9001 certified.

All rights reserved. © 1999 Microchip Technology Incorporated. Printed in the USA. 11/99 Printed on recycled paper.

Information contained in this publication regarding device applications and the like is intended for suggestion only and may be superseded by updates. No representation or warranty is given and no liability is assumed by Microchip Technology Incorporated with respect to the accuracy or use of such information, or infringement of patents or other intellectual property rights arising from such use or otherwise. Use of Microchip's products as critical components in life support systems is not authorized except with express written approval by Microchip. No licenses are conveyed, implicitly or otherwise, under any intellectual property rights. The Microchip logo and name are registered trademarks of Microchip Technology Inc. in the U.S.A. and other countries. All rights reserved. All other trademarks mentioned herein are the property of their respective companies.