



2003

Agilent Technologies

Life Sciences and Chemical Analysis

Instruments & Accessories



Agilent Technologies

Agilent Technologies is a leading provider of life science and chemical analysis solutions. We offer systems for the acquisition and interpretation of genetic and chemical information – from sample handling, to analysis, data management and reporting – for a variety of industries including life sciences, pharmaceutical, drug testing, forensics, hydrocarbon processing, chemical and environmental.

Answers to Technical Questions

With years of experience, Agilent sales representatives and support engineers can assist you with technical support, configuration, and compatibility questions. Get advice, recommendations, and guidance from our friendly team of experts.

Product Literature . . . Fast

You can download the latest information on Agilent instruments and accessories directly from our web site: www.agilent.com/chem. Or, just call and ask us and we'll mail or fax the latest information on Agilent products to you right away.

E-Notes

E-mail notification is a way for you to stay up to date on the latest content on our Web site. Every month, you can learn about new products, applications, promotions, literature, and more. See www.agilent.com for further information!

E-Seminars

Agilent e-seminars are an innovative way to advance knowledge and improve lab skills on a specific subject. For further information go to: **webshop.chem.agilent.com**

All product, brand, or company names are registered trademarks of their respected holders.

Gas Chromatography and GC/MS

Gas Chromatography	1 - 7
6890 Gas Chromatography System	1
Select an Inlet	1
Select a detector	2
5973N Mass Selective Detector	2
5000A Real-Time Gas Analyzer	3
GC Automatic Liquid Sampler	3
6850 Series GC System	4
6850 Automatic Liquid Sampler	4
Micro Gas Chromatographs	5
7694 Headspace Sampler	6
Thermal Desorbers	6
GC Consumables and Accessories	7
GC/MS	8 - 11
5973N Mass Selective Detector	8, 9
MSD Consumables and Accessories	10
7500 Series ICP-MS	11

Liquid Chromatography and LC/MS

Liquid Chromatography	12 - 16
1100 Series HPLC	12
1100 Series Pumping Systems and Data Handling	13
1100 Series Injection Systems	14
1100 Series Detectors	15
LC Consumables and Accessories	16
LC/MS	17 - 22
1100 Series LC/MSD	17
1100 Series LC/MSD Trap	18
LC/MSD Interfaces	19
LC/MSD Solutions	20 - 22

UV-Visible Spectroscopy	23 - 24
8453 UV-Visible Spectrophotometer	23
Software for the 8453 UV-Visible	24

Capillary Electrophoresis	25
---------------------------	----

Bioanalyzer	26 - 27
2100 Bioanalyzer	26
Bioanalyzer Kits, Consumables and Accessories	27

Microarray Scanner	28
Software for Microarray Analysis	28
Catalog Microarrays	29

Data Handling	30 - 32
ChemStation Plus NDS	30, 31
Cerity NDS	32

Support Services	33
Support Services	33
Training	33

Visit www.agilent.com/chem

Agilent's flagship GC

At the forefront of Agilent chemical analysis solutions is the 6890N network gas chromatograph. Let us assess your needs and design a solution to help you achieve better results. We will include instrumentation, accessories, supplies, services and any additional components required.



Performance

- Unsurpassed reproducibility – full electronic pneumatic control (EPC).
- Reproducible methods with retention time locking (RTL) software – same results, every location, every time!

Productivity

- Fast, easy method set-up.
- Fast oven warm-up and cool-down.
- Decreased calibration time.

Regulatory Compliance

- ISO 9001
- Declaration of Conformity
- Declaration of System Validation

Flexibility

- Modularity to meet changing needs – quickly change or upgrade GC configurations.
- LAN communication to PC.
- Six heated zones (Inlet, detector, auxiliary)

DESCRIPTION	PRODUCT NO.
6890N Gas Chromatograph Mainframe	G1540N
Product Installation	G1540N #44K
Familiarization at Installation	G1540N #44L
Installation Qualification	G1540N #44U
Operational Qualification/Performance Verification	G1540N #44V
6890N Series Gas Chromatograph For custom configurations.	G1540N
6890N GC for 5973 MSD	G1942N

Select an Inlet

Introduction systems for liquid and gas samples

A broad range of inlets lets the Agilent 6890N GC system meet a wide range of requirements

Split/Splitless

For 0.32, 0.25, 0.20 and 0.10 mm capillary columns and 0.53 mm megabore columns.

Packed

For glass and metal 1/4 and 1/8 inch packed columns and 0.53 mm megabore capillary columns.

Cool-on-column

Temperature programmable cool-on-column for direct liquid injection minimizes discrimination during injection and separates low boiling point constituents selectively.

Valves

The reproducible way to introduce gaseous samples to the 6890N. Call for details.

Programmable Temperature Vaporizing (PTV)

Perform large volume injections for lower minimum detection limits and less thermal degradation of labile compounds.

Volatiles Interface

Provides trace level detection of pre-vaporized samples.

All inlets listed come standard with electronic pneumatic control (EPC) for greater stability, reproducibility and improved performance. Included are digital control of flow and pressure.

DESCRIPTION	PRODUCT NO.	6890N OPTION NO.
Split/Splitless 100 psi capillary injection port	G1552A	G1540N #112
Split/Splitless 150 psi capillary injection port	G1560A	G1540N #113
Packed column injection port	G1551A	G1540N #102
Cool-on-column capillary injection port	G1554A	G1540N #122
PTV inlet with septumless head, for use with liquid CO ₂	G2617A	G1540N #130
PTV inlet with septum head, for use with liquid CO ₂	G2618A	G1540N #131
PTV inlet with septumless head, for use with liquid N ₂	G2619A	G1540N #132
PTV inlet with septum head, for use with liquid N ₂	G2620A	G1540N #133
Volatiles interface	G2319A	G1540N #142

Select a detector

A comprehensive selection of Agilent detectors

Flame Ionization Detector (FID)

- Maximum sensitivity and versatility.
- Optimized for capillary and packed chromatography.

Thermal Conductivity Detector (TCD)

- Single-filament, single-column design.
- Full digital dynamic range with optimum sensitivity for both packed and capillary column chromatography.

Micro Electron Capture Detector (ECD)

- Micro ECD for better linearity, sensitivity and reduced susceptibility to contamination.
- Reduced degradation of sensitive compounds

Nitrogen Phosphorous Detector (NPD)

- Ceramic bead for better stability lifetime.
- Optimized selectivity and sensitivity for nitrogen and phosphorus containing compounds.

Flame Photometric Detector (FPD)

- Selective for sulfur or phosphorus containing compounds.
- Dual wavelength design allows simultaneous detection of S and P in the same run.

All detectors come standard with EPC for precise digital control of carrier and make-up gases for accuracy and reduced gas consumption.

DESCRIPTION	PRODUCT NO.	6890N OPTION NO.
<i>Flame Ionization Detector For packed and capillary use</i>	G1561A	G1540N #210
<i>Flame Ionization Detector Capillary optimized</i>	G1562A	G1540N #211
<i>Thermal Conductivity Detector</i>	G1563A	G1540N #220
<i>Micro Electron Capture Detector</i>	G2397A	G1540N #231
<i>Flame Photometric Detector</i>	G2333A	G1540N #240
<i>Dual Wavelength FPD</i>	G2334A	G1540N #241
<i>Nitrogen Phosphorus Detector For packed and capillary use</i>	G1575A	G1540N #250
<i>Nitrogen Phosphorus Detector Capillary optimized</i>	G1576A	G1540N #251

5973N Mass Selective Detector

Easily perform routine qualitative and quantitative analyses in complex matrices

The 5973 Network Mass Selective Detector for the 6890N GC is an easy-to-use, highly reliable detector that can positively identify and quantitate compounds in complex matrices. It provides:

- Classical EI and CI Spectra for legal defensibility.
- Unsurpassed sensitivity – picogram levels in full scan electron ionization and positive chemical ionization modes; femtogram levels in selected ion monitoring mode.
- Fast scan speed and a linear response over four orders of magnitude.
- Ease of use and low maintenance.
- Flexible instrument control and data communication.



See pages 8-10 for a more detailed product description.

5000A Real-Time Gas Analyzer

Continuous chemical analysis measurement for continuous improvement

The Agilent 5000A Real-time Gas Analyzer provides sophisticated and precise continuous monitoring of a wide range of components in your gas streams – all in a rugged, transportable and easily operated package.



DESCRIPTION

5000 Real-time gas analyzer
Includes gas analyzer, software, and interface kit.
Requires 5973N mass spectrometer bundle.

PRODUCT NO.

G3163A

GC Automatic Liquid Sampler

Add automatic liquid injection to your GC

Agilent can help you meet demands for increased throughput via unattended operation of your Agilent GC.

7683 ALS for the 6890N

- The fastest injection speed in the industry – five times faster than any other ALS on the market.
- Eliminates needle discrimination.
- A choice of normal, on-column or multiple injections.
- Variable pre- and post-injection dwell times.
- Introduction of sample volumes from 0.1 μ L to 50 μ L or more (with multiple injections).
- Variable sampling depths for ambient headspace or micro liquid-liquid extraction.
- Two wash solvents for pre- and post-injection needle rinsing, virtually eliminating sample carryover.
- A 100-sample tray for the 6890N that mounts away from the GC oven to prevent sample degradation or condensation.
- The capability to use external standards, simplifying quantitation.



Integrated 7683 ALS for your 6890N and 6890 Plus GCs.

DESCRIPTION

7683 Autoinjector module (3 and 8 sample turrets)

PRODUCT NO.

G2613A

7683 Autosampler tray module

Includes a pack of 100 2-mL screw-cap vials.

G2614A

7683/6890 ALS interface board

G2612A

Trade in your old 7673 autoinjector, 100 position robotic tray, and/or controller to upgrade to the latest features.

- Simultaneous, dual-injection capability.
- A modular design, with options for increased automation.
- Fast and easy transfer of sampler modules from one GC to another.
- Easy inlet maintenance and fast, inexpensive repair if necessary.
- Optional bar code reader.

6850 Series GC System

Ideal combination of high performance, small size and ease of use

High performance

- Meets EN 50082-2 Heavy Industrial Environment standards.
- Split/splitless or packed inlet
- FID, TCD, or MSD. Autosampler – 8 or 27 samples.
- Gas or liquid sampling valve.



DESCRIPTION	PRODUCT NO.
6850 Series Gas Chromatograph* <i>Includes 6-button front panel with 2-line display, built-in interface for the 7683 autoinjector, RS-232, analog out. Inlet operating pressure 0-100 psi, LAN card and cable.</i>	G2630A
Capillary S/SL Inlet and FID with EPC <i>Capillary split/splitless inlet (0-100 psi) and flame ionization detector, both w/EPC.</i>	G2630A #611
or Packed Inlet/FID	G2630A #621
Capillary S/SL Inlet and TCD, with EPC <i>Capillary split/splitless inlet (0-100 psi) and thermal conductivity detector, both w/EPC.</i>	G2630A #612
or Packed Inlet/TCD	G2630A #622
Additional GC License for 6850 GC <i>Provides a license for a 6850 GC to operate with an existing multitechnique ChemStation.</i>	G2630A #530
6850 Hand-held controller <i>Provides method programming/editing and other functions. Detachable controller can be used with multiple 6850 GCs. RS-232 communications and cable included.</i>	G2629A

*Gas or Liquid Sampling Valves

6850 Automatic Liquid Sampler

Unattended operation for increased sample throughput

- Up to 27 2-ml vials or up to 22 4-ml vials
- Access to smaller samples through variable sampling depth
- Modular



DESCRIPTION	PRODUCT NO.
6850 Automatic Liquid Sampler <i>Can hold up to 27 2-ml vials or 22 4-ml vials using the optional turret accessory (G2880-64010).</i>	G2880A
7683 Autoinjector module <i>3 and 8 sample turret</i>	G2613A

DESCRIPTION	PRODUCT NO.
Screw top vials and caps	5182-0557
<i>Non-assembled, 500 vial convenience pack, clear vials, blue screw caps, PTFE/red rubber septa</i>	5182-0867
Crimp top vials	5181-3400
<i>500 vial convenience pack, clear crimp vials, silver caps, PTFE/red rubber septa</i>	
Snap top vials and caps	5182-0547
<i>500 vial convenience pack, clear snap vials, polymer caps, PTFE/red rubber septa</i>	
Vial inserts	5181-1270
<i>100 µl, mandrel point inserts with polymer feet, 100/pk</i>	
<i>250 µl, flat bottom glass inserts, 500/pk</i>	5181-3377
Micro vials	5184-3551
<i>Micro-V micro sampling vials, crimp top, 100/pk</i>	
Crimping and Decapping Supplies	5183-4763
<i>Electronic Crimper for 2 mL vials w/ battery and charger</i>	
<i>Electronic Decapper for 2 mL vials w/ battery and charger</i>	5184-3567
<i>Crimp holder without crimp head</i>	5062-2495
<i>Crimp head for 12 mm caps</i>	5001-3755
<i>Decapper head for 12 mm caps</i>	5001-3758
Syringes	5181-3360
<i>Syringe, 10 µl tapered, FN 23-26s/42/HP, 6/pk</i>	
<i>Syringe, 10 µl straight, FN 23s/42/HP, 6/pk</i>	9301-0725
<i>Syringe, 10 µl tapered, FN, Gastight, 23-26s/42/HP, 6/pk</i>	5181-3361
<i>Syringe, 5 µl tapered, FN 23-26s/42/HP, 6/pk</i>	5181-8810
<i>Syringe, 5 µl straight needle, FN 23s/42/HP, 6/pk</i>	5181-8810
<i>Syringe, 5 µl straight, FN 23/42/HP</i>	9301-0892

Micro Gas Chromatographs

Fast, accurate measurements when and where you need them

Agilent Micro Gas Chromatographs are dependable, fast, accurate, easy-to-use systems. They are designed to measure gas compositions and can handle a wide range of applications.



Popular applications

- Natural gas
- Fuel cell
- Oil and gas exploration
- Chemical manufacturing
- Heating and cooling
- Refining
- Landfill gases
- Specialty chemicals
- Mine safety
- General purpose fixed gas

Fast Analysis

- Immediate results.
- Reduce your analyses times from hours . . . to seconds.

Reliable

- Injector valves have been proven reliable to over 2.5 million analyses.

Flexible

- Wide range of sample conditioners
- Vaporizer for LPG

Small Size

- Single channel unit – 6" x 10" x 4" and 12 lbs.
- Modular – can be configured with 1 to 4 channels.
- Portable for field analysis.

Visit www.agilent.com/chem/microgc

3000 Micro GC

This model exhibits superior performance, even under adverse conditions. It features an extended detector dynamic range, allowing simultaneous analysis of major and minor components.

3000 NGA Micro GC

Designed for reliability and trouble-free service, the 3000 NGA is supplied complete with instrument, application specific software and calibration gases for natural gas analysis.

3000 RGA Micro GC

With a single GC, you can analyze more complex samples in seconds, providing faster feedback to your plant and process engineers. Four GC modules – each with an injector, unique capillary column, and micro TCD – provide a complete analysis of a wide range of refinery-type gases.

3000 Portable Micro GC

The portable Micro GC is ideal for field-work, test stations, pilot plants, and process lines. There are two versions, one with on-board batteries and mini

DESCRIPTION	PRODUCT NO.
3000 Micro GC. Single-channel (optional 2nd channel is available) <i>Heated gas chromatograph with thermal conductivity detector (TCD). Also includes installation and familiarization.</i>	G2801A
Add second channel including TCD	G2801A #002
Cerity Networked Data System <i>Provides control and data acquisition for one 3000 micro GC and standard chromatographic calculations and reporting.</i>	G2801A # 601
3000 Natural Gas Analyzer <i>Two-channel micro GC system designed to analyze thermal content of natural gas streams and report analytical results in accordance with GPA, ASTM, and ISO calculation standards. Analyzer includes instrument, software, natural gas calibration kit, installation and familiarization.</i>	G2803A
Three Channel Micro GC	G2802A
Add fourth channel including TCD	G2802A #002
3000 Refinery Gas Analyzer <i>includes 4 pre-configured GC-channels to analyze percent composition and energy content of refinery gas streams. Customizable refiner gas report</i>	G2804A
3000 Micro GC Portable 1 channel micro GC portable chassis TC detector	G2805A
Add second channel	G2805A#002
Add on-board gas cylinder	G2805A#006
Add on-board gas and power	G2805#007
Power cable adaptor for automobile	G2805#008

carrier gas cylinder (both rechargeable) and an even more economical model with an on-board carrier gas cylinder but no internal power source.

7694 Headspace Sampler

Looking for volatile analytes? Headspace sampling can simplify your work

Eliminate sample preparation with the Agilent 7694 Headspace Sampler by introducing volatile components automatically – from virtually any sample matrix – directly into a gas chromatograph (GC). A low-volume, highly inert, heated volatiles interface is optimized for headspace-GC analysis, preventing sample loss or degradation and reducing carryover.



DESCRIPTION	PRODUCT NO.
7694A Headspace sampler without EPC (44 samples)	G1290B
EPC Headspace interface kit to a 6890 EPC inlet	G1940A
7694A Headspace sampler software (Windows compatible)	G2401AA
7964E Economy headspace sampler (12 samples)	G1883A
Support table for headspace above MSD	G1287A
7694 Headspace Sampler, EPC-ready	G1289B

Thermal Desorbers

A broad range of Thermal Desorbers to offer the best analysis results

Thermal desorbers are available both from Agilent directly and from Agilent's Channel partners (see: www.chem.agilent.com/Scripts/cag_alliances.asp). Depending on the type of analysis, Agilent will recommend a different type of instrument to allow for optimum performance.

For EH&S applications Agilent recommends the Agilent/ Markes Unity thermal desorption system.

For other applications such as Environmental Health & Safety (e.g. Material Testing, Food Applications, etc.) contact an Agilent representative to determine the best thermal desorber for your analysis.

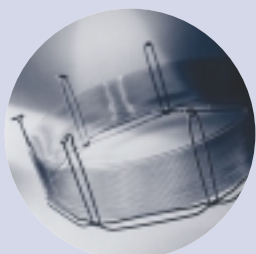


Example of one of our Thermal Desorber Solutions: Unity Thermal Desorber for EH&S applications

DESCRIPTION	PRODUCT NO.
Markes UNITY Thermal Desorber (EPC Ready). For single tube.	MKIUNITY
Markes Ultra Autosampler for UNITY TD. For up to 100 tubes.	MKIULTRA
Markes Air Server Accessory for UNITY TD Extends. UNITY TD sample range to include canister & continuous air/gas monitoring & tubes. Includes pump.	MKIAIRSV

Gas Chromatography – Consumables and Accessories

For more information on our entire portfolio of J&W and Agilent GC columns and other gas chromatography supplies, visit our web site at www.agilent.com/chem



DESCRIPTION	PRODUCT NO.
Column Nut (2/pk)	5181-8830
Ferrules and Septa	
0.5 mm id graphite ferrules (10/pk) (100, 200, 250, and 320 µm)	5080-8853
1.0 mm id graphite ferrules (530 µm) (10/pk)	5080-8773
Septa, 11 mm high-temperature, BTO (50/pk)	5183-4757
Septa, 11 mm advanced Green (50/pk)	5183-4759
Septa, 11-mm long life (50/pk)	5183-4761
Septa, 11-mm, general purpose (24/pk)	5181-1263
Split/Splitless Inlet Supplies 6890	5183-4711
Single taper liner, 4 mm id, 900-µl, (deactivated)	5181-3316
Single taper liner, 4 mm id, 900-µl, deactivated, glass wool	5062-3587
Double taper splitless liner (deactivated)	5181-3315
Graphite O-rings for split applications (10/pk)	5180-4168
Graphite O-rings for splitless applications (10/pk)	5180-4173
Viton O-rings, for all liner applications (12/pk)	5180-4182
Split/Splitless Seal Disk	5182-9652
Tools and Gas Management Supplies	
Installation kit with ferrules, nuts, copper tubing, and oxygen, moisture and hydrocarbon traps.	19199M
Electronic Leak Detector	5182-9646
ADM 1000 Volumetric Flowmeter	220-1170
Flow Tracker 1000 Flowmeter	5183-4779
FID Gas Purification System	5182-9703
Carrier Gas Purification System	5182-9704
FID Supplies for 6890	
Ignitor glow plug assembly	19231-60680
FID collector assembly	G1531-60690
Jet, capillary dedicated (0.29 mm id tip)	G1531-80560
Jet, adaptable capillary (0.29 mm id tip)	19244-80560
Jet, adaptable packed (0.46 mm id tip)	18710-20119
NPD Supplies for 6890	
NPD bead assembly	G1534-60570
FID/NPD Adapters for 6890	
Capillary FID/NPD adapter	19244-80610
1/4 inch vespel ferrule (10/pk)	5080-8774
1.0 mm graphite ferrule (10/pk)	5080-8773
0.5 mm graphite ferrule (10/pk)	5080-8853
1/4 inch brass tubing nut (10/pk)	5180-4104
TCD Supplies for 6890	
TCD capillary column adapter seal and nut	G1532-80540
ECD Supplies for 6890	
ECD wipe test kit	18713-60050

DESCRIPTION	PRODUCT NO.
3396 Series III Integrator	3396C
Includes instrument control (INET), BASIC programming, 256 KB RAM, two PCMCIA expansion slots and INET cable.	
3395 General-Purpose Integrator	3395B
Includes 128 KB RAM, and general purpose signal, remote, and sample number cables. Does not include BASIC programming, INET or expansion slots.	

The world's best benchtop MSD keeps getting better

Agilent's 5973 Network Mass Selective Detector makes it easier than ever to perform routine qualitative and quantitative analyses – even with complex sample matrices.

Sensitivity

- EI-SCAN mode, 1 pg of octafluoronaphthalene (OFN) with a signal to noise ratio (s/n) of 10:1.
- EI-SIM mode, 20 fg OFN, 10:1 s/n.
- NCI-SCAN mode, 1 fg OFN, 10:1 s/n.

Classical EI and CI spectra

- Legally defensible data.
- Identify total unknowns.
- Identify molecular weight using adduct ions.

Low maintenance

- High Energy Dynode extends multiplier life by two to three times.
- Independently heated interface, ion source and quadrupole increases the time between source cleanings.

Performance

- Mass range from 1.6 to 800 amu for expanded compound identification.
- Scan speed to 5200 amu/sec for better precision and narrow peak analysis and linear response over four orders of magnitude.
- Variable electron energy voltage to enhance molecular ions and increase sensitivity.

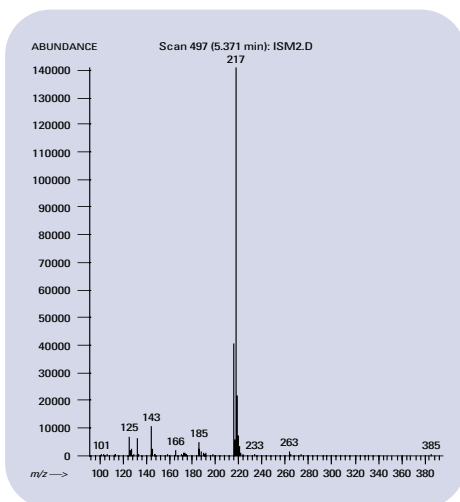
Choice of pump systems

- 95 L/sec diffusion pump.
- 70 L/sec standard performance turbomolecular pump for EI and PCI work.

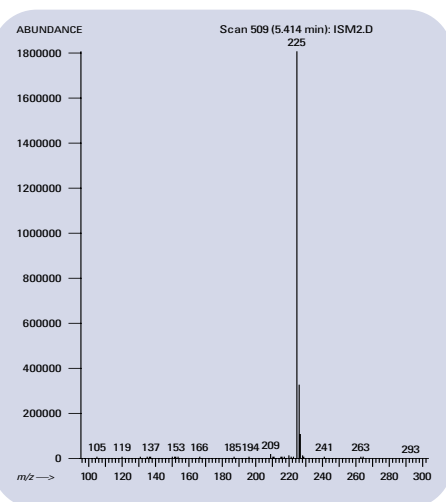
- 255 L/sec high performance turbomolecular pump allows use of larger ID columns for increased sample capacity and better linearity as well as shorter pump-down time for EI, PCI and NCI work.

MSD ChemStation for ease of use

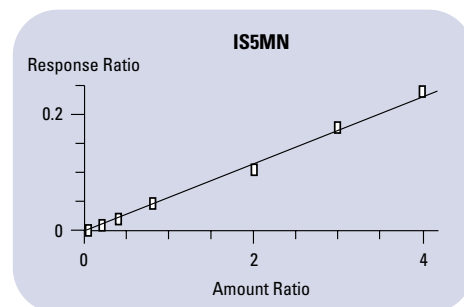
- Complete instrument control and data acquisition.
- Retention Time Locking (RTL) software.
- Library databases including NIST 98, Wiley, RTL pesticide library and Pfleger drug library.



Electron capture negative ion chemical ionization mass spectrum of the trimethyl-silyl derivative of isosorbide-5-mononitrate from 100 to 400 amu using ammonia buffer gas.



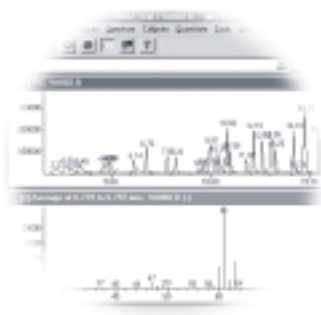
Electron capture negative ion chemical ionization mass spectrum of the trimethyl-silyl derivative of p-nitrobenzyl alcohol internal standard from 100 to 400 amu using ammonia buffer gas.



Calibration curve for IS5MN from 10 ng/ml to 1000 ng/ml, $r^2 = 0.996$.

5973N Mass Selective Detector

For more information on Agilent Technologies' Mass Selective Detector and relative applications, visit our web site at www.agilent.com/chem



DESCRIPTION	PRODUCT NO.
5973N MSD Performance Turbo Pump PCI/NCI System <i>Includes MSD, ChemStation, GC/MSD software, PC, printer, and ion gauge controller. For use with 6890N GC.</i>	G1789A
5973N MSD Standard Turbo Pump PCI System <i>Includes MSD, ChemStation, GC/MSD software, PC, printer, and ion gauge controller. For use with 6890N GC.</i>	G1788A
5973N MSD Performance Turbo Pump EI System <i>Includes MSD, ChemStation, GC/MSD software, PC and printer. For use with 6890N GC.</i>	G1779A
5973N MSD Standard Turbo EI System <i>Includes MSD, ChemStation, GC/MSD software, and PC, printer. For use with 6890N GC.</i>	G1778A
5973 MSD-Diffusion EI System <i>Includes MSD, ChemStation, GC/MSD software, PC and printer.</i>	G1777A
GC/MS System <i>Includes 6850GC, 5973N MSD Diff-Pump EI Mainframe, standard ChemStation Bundle. Not included: 59864B ion controller.</i>	G2570A
Ion Gauge Controller	59864B
PCI/NCI Upgrade for 5973N MSD <i>Upgrades all turbo-pump equipped 5973N MSD with Chemical ionization.</i>	G1086A
6890N GC for 5973N MSD <i>Includes 100 psi split/splitless inlet and interface to 5973N MSD.</i>	G1942N
7683 Automatic Liquid Sampler Tray <i>Includes 100 position sample tray.</i>	G2614A
MSD Data Analysis Software <i>Includes 5 user configurable modes: standard, enhanced, environmental, petrochemical, and drug analysis.</i>	G1710CA
Ion Gauge Tube for EI 5973N MSD	0960-0897

Mass Spectral libraries for MS ChemStations

NIST 98 MS Library Bundle CD-ROM <i>Includes 130K spectra, 107K structures (Agilent & NIST formats) and NIST MS Search and Deconvolution Programs. Requires 120MB.</i>	G1033A
NIST 98 Chemical Structures Database CD-ROM <i>Includes 107K chemical structures.</i>	G1036A
Wiley 7th Edition MS Spectral Library CD-ROM <i>Includes 390,000 EI spectra and 621,660 chemical names. Chemical Abstract numbers exist for 252,966 entries.</i>	G1035B
MS Pesticide Library CD-ROM <i>Includes 300 compounds in PBM format. Requires 1MB of free disk space and CD-ROM.</i>	G1038A
Pfleger 3rd Edition MS Drug Library CD-ROM <i>Includes 6,300 EI drug and drug metabolite spectra. Requires 4.5MB of free disk space and CD-ROM.</i>	G1039C
RTL Pesticide MS Library <i>Includes 550 compounds and RTL method. For use with MSD ChemStation Software revision B.01.00 or later.</i>	G1049A
Wiley 7N Edition MS Library Upgrade <i>Includes 390K spectra, PBM & NIST formats. Requires registration number or previous copy, NT and CDC ROM.</i>	G1730A
NIST 98 MS Library Bundle Upgrade	G1041A
NIST Mass Spectral Search Program	G1043A
NIST Spectral Library Only	G1044A

Mass Selective Detector – Consumables and Accessories

For more information on MSD Consumables and Accessories, visit our web site at www.agilent.com/chem

DESCRIPTION

PRODUCT NO.

<i>Ion Gauge Controller</i> <i>For use with 5973N MSD</i>	59864B
<i>Triode Gauge Tube</i>	0960-0897
<i>El Source</i>	G1099-60106
<i>CI Source</i>	G1999-65402
<i>Filament assembly</i>	05972-60053
<i>K and M Electron Multiplier</i>	05971-80102
<i>K and M Electron Multiplier replacement horn</i>	05971-80103

DESCRIPTION

PRODUCT NO.

<i>Maintenance Supplies</i>	
<i>Nylon gloves, large</i>	8650-0030
<i>Nylon gloves, small</i>	8650-0029
<i>Abrasive paper, 3 µm 5/pk</i>	5061-5896
<i>Lintfree cloths, 15/pk</i>	05980-60051
<i>Cotton swabs 100/pk</i>	5080-5400
<i>Diffusion pump oil, Santovac 5P Ultra, 18.5ml</i>	6040-0809
<i>Foreline pump oil, Inland 45, 1 ltr</i>	6040-0834
<i>Ion Source Supplies</i>	
<i>El Filament assembly (ceramic coiled filament with reflector assembly)</i>	05972-6005
<i>CI Filament assembly, 2/pk</i>	G1099-80053
<i>Lens insulator</i>	05971-20130
<i>Column nut, Ion source</i>	05988-20066
<i>Repeller Assembly Supplies</i>	
<i>Insulator</i>	G1099-20133
<i>Miscellaneous Supplies</i>	
<i>Electron multiplier horn</i>	05971-80103
<i>PFTBA (Perfluorotributylamine) sample, 10g</i>	8500-0656
<i>PFTBA Glass Bulb</i>	05980-20018
<i>Ferrules</i>	
<i>GC/MSD interface ferrule, 0.4 mm id for 200/250 µm columns (10/pk)</i>	5062-3508
<i>Injection port ferrule, Vespel/Graphite, 250 µm id (10/pk)</i>	5181-3323

7500 Series ICP-MS

A range of systems to meet your needs

The 7500 Series comprises of four different models – 7500a, 7500i, 7500s and 7500c – to precisely meet your application requirements. And since the 7500s Series is modular, each model can be configured or upgraded with optional features as required.



DESCRIPTION	PRODUCT NO.
Typical Samples:	
Nickel Sample Cone. Screw threaded mount. Includes O-ring	G1820-65238
Nickel Skimmer Cone except 7500c. Screw threaded mount.	G1820-65050
Nickel Skimmer Cone for 7500c. Screw threaded mount.	G1833-65497
Pt Skimmer Cone except for 7500c. Screw threaded mount.	G1820-65237
Pt Skimmer Cone for 7500c. Screw threaded mount.	G1833-65092
Stainless Skimmer Base except for 7500c	G1833-65407
Stainless Skimmer Base for 7500c	G1833-65498
Brass Skimmer Base except for 7500c	G1833-65408
Brass Skimmer Base for 7500c	G1833-65505
Quartz Spray Chamber	G1820-65337
Quartz Torch	G1833-65423
Spray Chamber/Torch Connector	G1833-65426
Shield Torch System for 7500a or 7500i	G3142B
Nebulizer	
Concentric Nebulizer	G1820-65138
Microflow Nebulizer	G3139A
Endcap for Concentric & Microflow Nebulizer (with Viton O-ring)	G1833-65475
Babington Nebulizer	G1820-60453
Endcap for Babington Nebulizer (with Viton O-ring, Polypropylene)	G1833-65476
7500a ICP-MS Mainframe	G3151A
ICP-MS mainframe equipped with high solids nebulizer and Ni interface. Requires 7500 Series ChemStation.	
7500i ICP-MS Mainframe	G3152A
ICP-MS mainframe equipped with high solids nebulizer and Ni interface. Requires 7500 Series ChemStation.	
7500c ICP-MS Mainframe	G3155A
ICP-MS mainframe equipped with Babington nebulizer, Ni interface and Octopole Reaction System.	
7500s ICP-MS Mainframe	G3153A
ICP-MS mainframe equipped with high solids nebulizer and Ni interface. Requires 7500 Series ChemStation.	
Integrated Sample Introduction System (ISIS)	G3148A
For 7500a or 7500s. Expands the application range of the 7500 Series.	
Integrated Autosampler	G3160A
Rotary type autosampler with cover for ultratrace analysis.	
Intelligent Sequence Software for 7500a	G3143A
Adds Intelligent Sequencing software module.	
T-Mode Interface for 7500a or 7500i	G3147A
For low level Fe determination in drinking water samples.	
7500 Series ChemStation	G3150A
Includes ICP-MS operating software, PC, monitor and printer.	

For a complete list of replacement parts and supplies for the 7500 ICP-MS, refer to our web site at www.agilent.com/chem

The new standard for value and productivity

Agilent Technologies 1100 Series sets the industry standard for HPLC analysis. The combination of our long expertise in chemical analysis with leading computer technology expands networking technology into the laboratory.

Industry-specific total solutions that save time and money

To help you run applications quickly and successfully, we offer everything needed for successful analysis results – from reliable hardware and software and long-lasting columns to industry-specific applications.

Superior HPLC modules for best chromatography results

The Agilent 1100 Series keeps your productivity high and your operating costs low. With our chemical analysis instruments, you get high qualitative accuracy, excellent quantitative precision, unmatched ruggedness and reliability for maximum uptime and fast results.

Automated data management for compliance with 21 CFR Part 11

- Consistent links between method, raw data and results ensure data integrity, security and traceability.
- Store raw and meta data automatically.
- Retrieve data of interest with an integrated query function.

Pumps

- Isocratic pump designed for routine QA/QC applications.
- Binary gradient pump for rapid, reproducible gradients and highest performance especially at low flow rates.
- Quaternary pump provides the highest flexibility in solvent mixing for a wide range of research and routine applications.

The 1100 Series also includes pumps designed for specific applications:

- Capillary pump ideally suited for capillary LC applications, where sample volumes are limited and higher sensitivity is essential.
- Preparative pump is an isocratic high performance pump with two parallel pistons, perfect for scale-up work, for typical preparative HPLC and for purity checks

Autosamplers

- Standard autosampler for reliability, safety and ease of use.
- Well-plate autosampler adds maximum flexibility and fast injection.
- Thermostatted micro autosampler and micro well-plate autosampler allow injection of sample volumes from nl to μ l.

Detectors

Available are UV-detectors including variable and multi-wavelength, mass selective detectors, as well as special detectors – refractive index and fluorescence.

Saves time

This system is designed for quick startup, automated validation, ease of use, fast chromatography and automated data transfer to save you time without demanding more space or resources.



1100 Series Modules

Select a ➤ pumping system



1100 Series Isocratic Pump with active inlet valve



1100 Series Binary Pump with high pressure mixing



1100 Series Quaternary Pump with low pressure mixing



1100 Series Preparative Pump



1100 Series Capillary Pump with active inlet valve

DESCRIPTION	PRODUCT NO.
1100 Isocratic Pump <i>Includes isocratic pump, solvent cabinet, solvent bottle and CAN cable.</i>	G1310A
1100 Binary Pump <i>Includes binary pump, solvent cabinet, 2 solvent bottles and CAN cable.</i>	G1312A
Maintenance Kit for Binary Pump <i>Includes parts required for standard maintenance.</i>	G1312A #010
Continuous seal wash option for use with highly concentrated salt solution to extend seal lifetime	G1312A #030
Solvent Selection Option <i>Includes solvent selection valve and 2 solvent bottles.</i>	G1312A #031
1100 Quaternary Pump with Degasser <i>Includes quaternary pump, solvent cabinet, 4 solvent bottles, vacuum degasser and CAN cable.</i>	G1354A
Maintenance Kit for Quaternary Pump <i>Includes parts required for standard maintenance.</i>	G1354A #010
Continuous seal wash option for use with highly concentrated salt solutions to extend seal lifetime	G1354A #030
1100 Preparative Pump <i>Includes preparative pump, solvent cabinet, 2 L solvent bottle, purge valve, 1-m CAN cable and seal wash with peristaltic pump.</i>	G1361A
1100 Preparative Pump Gradient Extension <i>Includes preparative pump, gradient kit, 2 L solvent bottle, purge valve, 0.5-m CAN cable and seal wash with peristaltic pump.</i>	G1391A
1100 Capillary LC System <i>Includes micro vacuum degasser, capillary pump, thermostatted micro ALS, thermostatted column compartment, diode array with 500 nl flow cell, LAN card and 3D ChemStation.</i>	G1388A

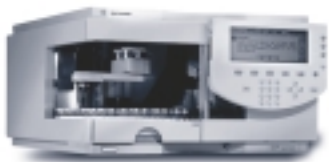
Select a controlling and data-handling device

DESCRIPTION	PRODUCT NO.
Single Instrument LC 2D ChemStation <i>Includes PC, CD-ROM, monitor, software and printer.</i>	G1317A
High Performance LC 2D ChemStation <i>Includes PC, CD-ROM, monitor, software and printer.</i>	G1318B
Single Instrument LC 3D ChemStation <i>Includes PC, CD-ROM, monitor, software and printer.</i>	G1319A
1100 Control Module <i>For single point control of 1100 HPLC modules and on-line signal monitoring. Includes CAN-cable and slot for PCMCIA-card for method transfer.</i>	G1323B
Purification/High Through Put SW Module <i>Software for the purification system including fractionation based on time and UV signal.</i>	G2262A

1100 Series Modules

Select a

➤ manual or automated injection system



1100 Series Autosampler



1100 Series Well-Plate Sampler



1100 Series Fraction Collector



1100 Series Vacuum Degasser or Micro Degasser for reduced baseline noise



1100 Series Thermostatted Column Compartment with two independent temperature zones

DESCRIPTION

PRODUCT NO.

1100 Autosampler

Includes autosampler with 100 vial (2ml) tray, 40 vial (2ml) tray, 15 vial (6ml) tray and CAN cable. Injection volume range from 0.1 to 100 microliters.

G1313A

1100 Thermostatted Autosampler

Includes cooled autosampler with 100 vial (2ml) tray, 40 vial (2ml) tray, 15 vial (6ml) tray and CAN cable. Injection volume range from 0.1 to 100 microliters.

G1327A

1100 Cooled Autosampler Upgrade Kit

Upgrades an existing 1100 autosampler (G1313A) to allow sample cooling.

G1395A

1100 Well-Plate Autosampler

Includes well-plate autosampler with well-plate tray for two well-plates and 10 x 2 ml vials, Rheodyne injection valve and 0.5 m CAN cable.

G1367A

1100 Thermostatted Well-Plate Sampler

Includes well-plate autosampler with well-plate tray, sample thermostat, Rheodyne injection valve and CAN cable.

G1368A

1100 Micro Well-Plate Sampler

Includes micro well-plate autosampler with well-plate tray, electrically actuated Rheodyne micro injection valve and 0.5-m CAN cable.

G1377A

1100 Capillary LC System

Includes micro vacuum degasser, capillary pump, thermost, micro ALS, thermostatted column compartment, DA detector with 500 nl flow cell, LAN and 3D ChemStation.

G1388A

1100 Manual Injector

Includes Rheodyne 7725 manual injection valve, 20 µl sample loop and mounting stand.

G1328A

Select a fraction collector

1100 Series Fraction Collector

High flow version with short needle for deep well-plates and vials from 48 mm up to 100 mm in height.

G1364A

220 MPS Fraction Collection Accessory

Enables fraction collection in well-plates or tubes and color-coded sample/fraction tracking. Includes valve kit and software (INB22001).

G2251A

Select an on-line vacuum degasser

1100 Vacuum Degasser

Includes 4 channel vacuum degasser

G1322A

1100 Micro Degasser

Includes 4 channel vacuum degasser

G1379A

Select a thermostatted column compartment

With optional column switching valve.

Thermostatted Column Compartment

Includes column compartment with two heat exchangers for solvent pre-heating, column identification module and CAN cable.

G1316A

Column Switching Option

G1316A #055

Micro Column Switching Option

G1316A #056

1100 Series Modules

Select a

➤ detector from the 1100 Series



1100 Series Variable Wavelength Detector
Built in holmium oxide filter



1100 Series Diode Array Detector
190-950 nm with programmable slit



1100 Series Multiple Wavelength Detector



1100 Series Fluorescence Detector
Optional sample cuvette



1100 Refractive Index Detector
Including solvent recycle valve

DESCRIPTION	PRODUCT NO.
Detectors	
1100 Variable Wavelength Detector <i>Includes variable wavelength detector with deuterium lamp, Lan interface and CAN cable. No flow cell included.</i>	G1314A
Standard Flow Cell <i>Includes stainless steel flow cell with 10 mm path length and 14 microliter volume. Pressure tight up to 40 bar.</i>	G1314A #018
Semi-micro Flow Cell <i>Includes stainless steel flow cell with 6 mm path length and 5 microliter volume, pressure tight up to 120 bar.</i>	G1314A #016
Micro Flow Cell <i>Includes stainless steel flow cell with 5 mm path length and 1 microliter volume. Pressure tight up to 40 bar.</i>	G1314A #020
High Pressure Flow Cell <i>Includes stainless steel flow cell with 10 mm path length and 14 microliter volume. Pressure tight up to 400 bar.</i>	G1314A #021
1100 Diode Array Detector <i>Includes diode-array detector with long-life deuterium and tungsten lamp, CAN cable, no flow cell included.</i>	G1315B
Standard Flow Cell <i>Includes standard steel flow cell with 10 mm path length and 14 microliter volume. Pressure tight up to 40 bar.</i>	G1315B #018
Semi-micro Flow Cell <i>Includes stainless steel flow cell with 6 mm path length and 5 microliter volume, pressure tight up to 120 bar.</i>	G1315B #016
500 Nanoliter Flow Cell <i>Includes quartz flow cell with 10 mm path length and 500 nanoliter volume in steel housing and connecting capillaries. Pressure tight up to 40 bar.</i>	G1315B #014
Micro High Pressure Flow Cell <i>Includes stainless steel flow cell with 6 mm path length and 1.7 microliter volume. Pressure tight up to 400 bar.</i>	G1315B #020
Prep Flow Cell 3 mm 120 bar <i>Includes stainless steel flow cell with 3 mm path length and 4 microliter volume, pressure tight up to 120 bar.</i>	G1315B #022
Prep Flow Cell 0.3 mm 20 bar quartz <i>Includes a quartz cell with 0.3mm path length, pressure tight up to 20 bar, PTFE connection tubings (i.d. 0.5 and 0.8 mm).</i>	G1315B #024
1100 Multiple Wavelength Detector <i>Includes diode-array based detector with long-life deuterium and tungsten lamp. CAN cable. No flow cell included.</i>	G1365B
Semi-micro Flow Cell <i>Includes stainless steel flow cell with 6mm path length and 5 microliter volume, pressure tight up to 120 bar.</i>	G1365B #016
Standard Flow Cell <i>Includes stainless steel flow cell with 10mm path length and 13 microliter volume, pressure tight up to 120 bar.</i>	G1365B #018
Prep Flow Cell 3 mm 120 bar SST <i>Includes stainless steel flow cell with 3 mm path length and 4 microliter volume, pressure tight up to 120 bar, SST connection capillaries (i.d. 0.5mm).</i>	G1365B #022
High Pressure Micro Flow Cell <i>Includes stainless steel flow cell with 6mm path length and 1.7 microliter volume, pressure tight up to 400 bar.</i>	G1365B #020
1100 Fluorescence Detector <i>For multi-wavelength detection, on-line acquisition of excitation and emission spectra. Includes 8 ul flow cell.</i>	G1321A
Fluorescence Detector Flow-thru Cuvette <i>For off-line measurement, quartz cell with 8 ul volume, pressure tight up to 20 bar, 1 ml syringe, wide bore capillaries.</i>	G1321A #025
1100 Refractive Index Detector <i>Includes flow cell and solvent recycle valve, pressure tight up to 7 bar.</i>	G1362A

Liquid Chromatography – Consumables and Accessories

Maximize your instrument uptime
with original Agilent supplies at
www.agilent.com/chem



DESCRIPTION	PRODUCT NO.
Pump Module Supplies	
Maintenance kit (outlet cap, PTFE frits (10), pump seals (4), outlet gold seal, inlet filters (2), valve cartridge)	G1311-68710
Sapphire plunger	5063-6586
Plunger seals (2/pk), graphite-filled Teflon	5063-6589
Plunger seals (2/pk), polyethylene for normal phase	0905-1420
Sieves (SS) for outlet valve (10/pk)	5063-6505
Cartridge for active inlet valve	5062-8562
Glass filter, solvent inlet	5041-2168
Solvent reservoir, 1 liter with cap	9301-1421
Solvent tubing, 5m, 1.5 mm id, 3 mm od	5062-2483
Online Degasser Supplies	
Online degasser accessory kit (screws (8), bushings (8), markers (4), tubing from degasser to pump, syringe, adapter)	G1322-68705
Autosampler Supplies	
Maintenance kit (Vespel rotor seal, needle, needle seat, metering seals (2), finger caps (15))	G1313-68709
Multi-draw upgrade kit (seat capillary 500 µl, seat capillary 1500 µl, ZDV union)	G1313-68711
Rotor seal, Vespel	0100-1853
Needle, autosampler	G1313-87201
Well-Plate Autosampler Supplies	
384 Well Plate, PP, 30/pk	5042-1388
96 Deep Well Plate, 1 ml, PP, 32/pk	5042-1387
96 Well Plate with glass inserts, caps, septa preassembled, 0.35 ml	5065-4402
96 Well Plate, 0.5 ml, PP, 10/pk	5042-1386
96 Well Plate, 0.5 ml, PP, 120/pk	5042-1385
96 Well Plate, 0.5 ml, Closing Mats 50, pk	5042-1389
Connecting Capillaries and Fittings	
Connecting capillary, w/ fittings, 9 cm, 0.17 mm id	G1316-87300
Connecting capillary, w/fittings, 18cm, 0.17 mm id	G1313-87305
Connecting capillary, w/ fittings, 39cm, 0.17 mm id	G1315-87311
Connecting capillary w/ fittings, 60 cm, 0.17 mm id	G1312-67305
1/16" SS fittings, front and back ferrules, 10/pk	5062-2418
1/16" SS long fittings, front and back ferrules, 10/pk	5065-4454
Colored PEEK finger tight fittings, 10/pk	5065-4426
Detector Lamps	
Deuterium lamp for DAD	2140-0590
Tungsten lamp	G1103-60001
Deuterium lamp for VWD	G1314-60100
HPLC Column Kits	
Fast Eclipse XDB Method Development Kit	5183-4627
Fast Stablebond Method Development Kit	5183-4625
RP-Method Development Kit – 4 mm id	5063-6516
RP-Method Development Kit – 2 mm id	5063-6529
Traditional Eclipse XDB Method Development Kit	5183-4626
Traditional Stablebond Method Development Kit	5183-4624
ZORBAX Starter Kit, 5 µm, C18	5183-2021
ZORBAX Starter Kit, 5 µm, C8	5183-2022

Capillary Starter Kits	PRODUCT NO.
Capillary/fitting starter kit 0.17 mm id	5065-9939
Capillary/fitting starter kit for Cap LC	5065-9938
Capillary/fitting starter kit 0.12 mm id	5065-9937
Accubond SPE Reversed Phase Starter Kit	009-4003
Accubond SPE Normal Phase Starter Kit	009-4004
Accubond SPE Ion-Exchange Phase Starter Kit	009-4005

Visit www.agilent.com/chem

An LC/MSD for the chromatographer

The 1100 Series LC/MSD provides information quickly in one chromatographic run. It provides molecular weight, structural information and has excellent selectivity needed to identify compounds, check the purity of chromatographic peaks and quantitate trace level samples in complex matrices in a rugged, reliable, easy-to-use benchtop system.

Ordering options for total flexibility

- Two models of the popular LC/MSD quad set new standards for performance and value for quadrupole LC/MS systems.

LC/MSD SL

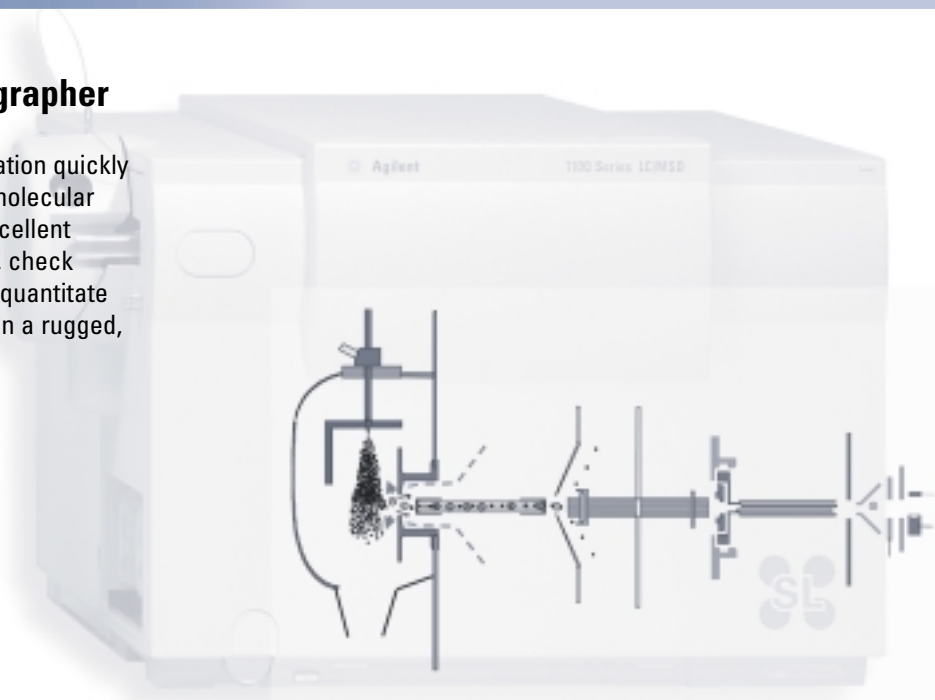
- For chromatographers and mass spectrometrists who need the utmost in sensitivity, the LC/MSD SL makes analyses in the very low picogram range possible.

LC/MSD VL

- The economical LC/MSD VL lowers the barrier to putting the power of Agilent's LC/MS technology in every laboratory.

The LC/MSD for the Chromatographer

- Improved signal to noise ratio.
- Increased sensitivity – by a factor of 10 to 100.
- No contamination of ion optics.
- Full-scan mode for rapid detection.
- SIM (selective ion monitoring) mode for highest sensitivity of unknown compounds.
- Integrated software platform for both MS and LC.



Orthogonal spray orientation and high-capacity drying gas system improve instrument performance and decrease maintenance requirements

DESCRIPTION	PRODUCT NO.
LC/MSD API-Electrospray SL System 1100 Series LC/MSD module, API-Electrospray source, PC/Printer and LC/MSD ChemStation software for data acquisition and data analysis.	G2708DA
LC/MSD APCI SL System 1100 Series LC/MSD module, APCI source, PC/Printer and LC/MSD ChemStation software for data acquisition and data analysis.	G2707DA
LC/MSD API-Electrospray VL System Includes 1100 Series LC/MSD module, API-Electrospray source, PC/Printer, and LC/MSD ChemStation software for data acquisition and data analysis.	G2708CA
LC/MSD APCI VL System Includes 1100 Series LC/MSD module, APCI source, PC/Printer, and LC/MSD ChemStation software for data acquisition and data analysis.	G2707CA
APCI Source Includes APCI spray chamber, corona discharge needle, nebulizer, APCI vaporizer and test calibration kit.	G1947A
API-Electrospray Source Includes API-ES spray chamber, nebulizer and test calibration kit.	G1948A
APPI Source Includes APPI spray chamber, power supply, communication cable, power cord, nebulizer, vaporizer, photoionization lamp and test calibration.	G1971A
LC/MSD ChemStation Software For system control, acquisition & eval. of chromatographic and spectral data from one 1100 LC/MSD. Includes DAD & MS spectral analysis capability.	G2710AA
1100 LC/MSD Data Analysis Software	G2730AA
Software to add 1100 LC/MSD to an existing 3D HPLC ChemStation	G2715AA
1100 LC/MSD Deconvolution and Bioanalysis Software	G2720AA
MSD Easy Access Software for LC/MSD Includes installation and familiarization.	G2725AA
MSD Active Splitter for LC/MSD Systems	G1968-6401

Visit www.agilent.com/chem

1100 Series LC/MSD Trap

Identify target compounds faster and with more confidence

The Agilent 1100 Series LC/MSD Trap is a high performance liquid chromatograph/mass spectrometer (LC/MSⁿ) ion trap system that gives scientists the MS/MS and MSⁿ data they need to solve challenging research questions faster and with more confidence.

The most sensitive trap available with excellent full-scan sensitivity

LC/MSD Trap XCT System

- New generation eXtra Capacity ion Trap for x 10 extra sensitivity
- Extra fast Scan mode 26000 m/z per second
- Mixed mode scanning ideal for proteomics experiments
- Use with Agilent NanoLC and Agilent Spectrum Mill MS Proteomics Workbench software for ultimate proteomics MS solution

LC/MSD Trap SL capabilities:

- 2,200 m/z standard and 4,000 m/z extended mass range.
- Fast, automated determination of charge state for intelligent MS/MS.
- Manual MSⁿ.
- High-speed positive/negative ion mode polarity switching (~0.5 seconds).
- Advanced auto MSⁿ with a preferred mass list and time-based dynamic exclusion.
- New data-dependent maximum resolution scan mode.
- Fastest automation determination of charge state on-the-fly for intelligent MS/MS.
- SmartFrag for quality MS/MS on the first try.

LC/MSD Trap VL capabilities:

- MS/MS high scan sensitivity.
- 2,200 m/z mass range.
- Automatic MS/MS.
- Standard-speed positive/negative mode polarity switching (~2 seconds).

Improved analyzer of the LC/MSD Trap SL

DESCRIPTION

PRODUCT NO.

LC/MSD Trap XCT System

G2451AA

LC/MSD Trap SL System

G2440DA

Includes 1100 Series LC/MSD Trap module, API-Electrospray source, PC, printer and LC/MSD ChemStation software for data acquisition and data analysis.

LC/MSD Trap VL System

G2440CA

Includes 1100 Series LC/MSD Trap module, API-Electrospray source, PC, printer and LC/MSD ChemStation software for data acquisition and data analysis.

APCI Source for 1100 LC/MSD Trap

G1947A

Includes APCI spray chamber, corona discharge needle, nebulizer, APCI vaporizer and test calibration kit.

APPI Source for 1100 LC/MSD Trap

G1971A

Includes APPI spray chamber, power supply, communication cable, power cord, nebulizer, vaporizer, photoionization lamp and test calibration.

LC/MSD Trap Deconvolution and Bioanalysis Software

G1981AA

For deconvolution of multiply charged ion series and software for protein and peptide data evaluation.

LC/MSD Trap ChemStation Data Analysis Software

G2450AA

For off-line data evaluation.

Nanoflow Proteomics Solution System

G1990AA

Integrated and optimized Nanoflow Proteomics LC/MS/MS for low femtomole protein identification

New atmospheric-pressure matrix-assisted laser desorption/ionization (AP-MALDI) source

G1972A

Mass Spec Flow Accessories

MSD Active Splitter for LC/MSD Systems

G1968-64101

Capillary Flow ESI Sprayer

G1385A

LC/MSD and LC/MSD Trap Nanospray Source

G1982A

Switching between interfaces is simple and fast

With a choice of ionization modes, the Agilent LC/MSD can be used to analyze a wide range of sample types – from pharmaceuticals to large proteins. Your choice of ionization sources for MSD and MSD Trap include:

ESI – Electrospray Ionization

- Patented orthogonal spray ion source design provides exceptional sensitivity and reproducibility over a wide range of LC operating conditions.
- Ideal for charged and polar compounds.
- The orthogonal spray orientation keeps the capillary cleaner.
- The ion source is very tolerant of non-volatile components in samples or mobile phase.
- Unsurpassed sensitivity for demanding applications (SL model).
- Lower detection limits – high sensitivity.
- More functionality – tools for automation and enhanced productivity.

APCI – Atmospheric Pressure Chemical Ionization

- Rugged, low maintenance pre-aligned.
- Ideal for thermally stable analytes, compounds of intermediate MW and polarity, compounds containing heteroatoms and compounds with poor electrospray response.

Syagen PhotoMate™ APPI – Atmospheric Pressure Photoionization

- Relative low ionization energy causes minimal fragmentation resulting in easy identification of molecular weights.
- Can ionize compounds that are difficult to ionize using other API techniques.
- Can be used without dopants

On-line Nanospray

- Integrated with the 1100 capillary LC system.
- Highest sensitivity at nanoliter flow rates.



Use with other HPLC models for highly sensitive detection

The Agilent 1100 Series LC/MSD is intended to be used primarily with the 1100 Series HPLC modules, but it may be used with other HPLC models. Its design is compatible with 1.0 to 4.0 mm columns, and also 2.1 mm narrow bore and 0.3 to 1.0 mm capillary columns.

Easy Access Software

Agilent's new system makes confirmation of compounds remarkably fast and easy, even for users without mass spectrometry expertise.

- LC and LC/MS software for shared systems.
- Walk up simplicity.

Additional systems designed with you in mind ... let us help you configure the best solution

Agilent 1100 Series High-Throughput LC/MS System

Identification, quantification and purity measurements of thousands of samples demand robust, fast and integrated solutions that chemists can rely on, day-in, day-out. The Agilent 1100 Series high-throughput LC/MS system is the answer to this – a single-vendor solution based on the best-selling and industry-leading 1100 Series HPLC system.

System features:

- **High Speed** – for cycle times smaller than 30 sec
- **Minimized carryover** – as small as 0.003%
- **High accuracy and precision** – even at trace levels
- **High capacity** – automated, unattended operation of up to 80 well plates
- **Walk-up capabilities** – adding and prioritizing of plates/samples on the fly
- **Handling of well-plate formats and vial plates**, even mixed
- **Barcode readers** – for positive plate identification
- **Valve solutions** – for increased speed, uptime and flexibility
- **An integrated software solution** with a single point of control
- **Complete suite of compliance products** for regulated environments
- **High uptime** by superior online diagnostics and services

Agilent 1100 Series Capillary LC System

The Agilent 1100 Series Capillary LC system is designed for increased sensitivity and for analyzing limited sample volumes typically found in the biopharmaceutical research environment. Heart of the system is the 1100 Series Capillary Pump which adds wide flexibility and reliability to the system. The pump offers:

- Real measurement and control of the flow rate, rather than calculations. You can assure flow rate stability throughout the analysis.
- In capillary mode optimized flow rates from 1 $\mu\text{l}/\text{min}$ up to 100 $\mu\text{l}/\text{min}$, (in normal mode up to 2.5 ml/min) for highest flexibility
- Retention time (RT) stability independent from column back pressure for maximum performance
- Accurate flow rates
- The use of an automatic purge valve
- Low delay volume through the use of microvolume components

A complete system consists of the following modules from the **Agilent 1100 LC Series:**

Capillary Pump, Micro Vacuum Degasser, Thermostatted Micro Autosampler or Agilent 1100 Series Micro Well-Plate Autosampler and thermostatted version, Column Compartment, Diode-Array-Detector.

The Agilent Capillary LC System can easily be combined with the Agilent 1100 LC/MSD family.

Agilent 1100 Series GPC-SEC Analysis System

The Agilent 1100 Series GPC system offers easy and reliable polymer characterization. The precision of its isocratic solvent delivery system provides the constant, stable flow rate that is essential to maintain high resolution. The high flow precision and the excellent temperature stability of the Agilent 1100 Series thermostatted column compartment ensure the highest accuracy and precision of molecular weight determinations.

MS for Combinatorial Chemistry

Using Agilent's system you can rapidly identify the products of combinatorial syntheses and estimate their purities before screening. As a result, you get fast validation of combinatorial methods and efficient confirmation of large combinatorial synthesis projects.

With this system, you can generate and optimize drug leads with remarkable ease and speed – without mass spectrometry expertise.



Agilent Nanoflow Proteomics Solution

The integrated solution

Agilent has used its experience and leadership in both liquid chromatography and mass spectrometry to create the Nanoflow Proteomics Solution, a highly integrated approach to the identification and characterization of proteolytically digested proteins. The solution combines state-of-the-art nanoflow HPLC and MS technology with powerful software and application-specific columns to achieve an unprecedented combination of sensitivity, reliability, and automation.

Unsurpassed low-flow performance and stability

The heart of the Nanoflow Proteomics Solution is an Agilent 1100 Series liquid chromatograph optimized for nanoliter to microliter flow rates. The nanoflow pump features revolutionary electronic flow control (EFC) with active feedback for unprecedented stability at flow rates from 100 nL/min to 1 µL/min. Ideal for high-efficiency nanocolumns.

High-efficiency nanoflow separations

New nanocolumns have been created specifically for the Nanoflow Proteomics Solution:

Analytical columns featuring Agilent's famous ZORBAX StableBond (SB) technology.

Enrichment columns, Zorbax 300SB C18 and C8 for concentrating and desalting low concentration peptide mixtures.

Maintain Separation Efficiency

The entire flow path has been designed to maximize and maintain separation efficiency. The switching valves, fittings, connectors, and PEEK-coated fused silica tubing have all been carefully selected to minimize dead volumes.

Superb MS/MS sensitivity

Fed by ultrastable nanoliter LC flow, the online nanoflow electrospray ion source and the Agilent 1100 Series LC/MSD Trap SL provide low-femtomole-level or better LC/MS/MS sensitivity. SmartFrag collision energy ramping simplifies method development and ensures that every peptide receives the correct collision energy for dissociation.

Fully integrated software

The LC/MSD Trap's inherent full-scan MS/MS sensitivity and versatility are supplemented by the many data-dependent acquisition and analysis features of the LC/MS software. These features improve the amount and quality of data acquired, leading to better, more conclusive database matches. The ion trap software is fully integrated with both the LC software and database search software for greater throughput and ease of use.

Better results through intelligent data acquisition

With so many variables in the analytical process, successful protein identification is a challenge, even with superior hardware performance. The Nanoflow Proteomics Solution software includes advanced, second-generation data-dependent acquisition capabilities. Capabilities that can increase both the amount and quality of unique peptide data, and with it your chances for success.



Quickly identify and characterize proteins

Mascot protein database search software from Matrix Science Ltd. is used by many of the world's leading proteomics laboratories. It is a powerful tool for the identification of proteins and peptides from mass spectral data. Mascot allows you to rapidly search proprietary or commercial databases.

Spectrum Mill MS Proteomics Workbench:

The Spectrum Mill workbench is a full-featured informatics software package for high-throughput MS protein data analysis. It provides spectral extraction and quality assessment, database searching and de novo sequencing, ICAT quantitation, results validation, and cross-experiment result summaries in a carefully integrated package.

Agilent 1100 Series Purification System – Unprecedented flexibility in compound purification and analysis

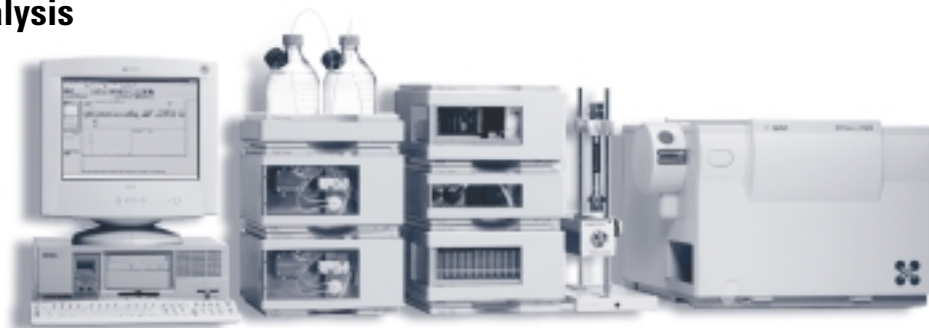
A new level of throughput, speed and automation

Agilent Technologies' industry-leading HPLC system is the right tool for preparative HPLC in the pharmaceutical industry. Its speed, strong separation power and high level of automation make it an invaluable workhorse in the laboratory.

The system has been optimized according to the amount of sample to be isolated, required purity and desired throughput. The #1 selling 1100 Series HPLC modules have been expanded to address your purification needs. The result – a new level of throughput, speed and automation.

The Agilent 1100 Series Purification System offers:

- Scalable choices that let you match the purification process to sample size.
 - µg to gram quantities.
 - Choice of pumps with flow rates up to 100 ml/min.
 - Selection of detectors and flow cells.
 - High-capacity sampler and fraction collector.
- Fraction collection based on elution UV and/or mass signal – a unique combination that lets us collect exactly the fractions you need and no more.
- Both purification and purity checks on one easy-to-use platform.
- Single-vendor convenience for all your hardware, software, supplies and support.



1100 Series Preparative Pump

- Isocratic performance pump with two parallel pistons.
- Flow rates up to 100 ml/min at 400 bar without the need to change pump heads.
- Two pumps combined provide precise gradient formation.
- Automated seal wash using a peristaltic pump.
- Automated electromagnetic purge valve.

1100 Series Diode Array Detector

- Different flow cells designed for analytical and preparative applications.
- Optimized for peak collection and fraction collection.
- Detection range from 190 to 950 nm.

Software dedicated to purification needs

- Completely automated Agilent ChemStation system provides control of all 1100 Series modules with dedicated software for purification.

Additional purification system HPLC modules and components

- Fraction collector designed for analytical and large-scale preparative applications.
- Column organizer stores up to six analytical and/or preparative columns. Agilent preparative task columns include:
 - ZORBAX CombiHT – ideal for fast separations.
 - StableBond for low pH.
 - Eclipse XDP for mid pH.
- Autosamplers for plates, vials and test tubes.
- New valve solutions designed to increase throughput, speed and automation.
- The Agilent 1100 Series LC/MSD gives you the molecular weight and structural data you need for improved confidence of analytical results.
 - Multi-signal capability for positive and negative ion detection in a single analysis.
 - Mass-based fraction collection that can be combined with analog detector signal for added flexibility and specificity.
 - Use the specificity to identify and collect only target compounds.

Visit www.agilent.com/chem

Choose the system that meets your needs

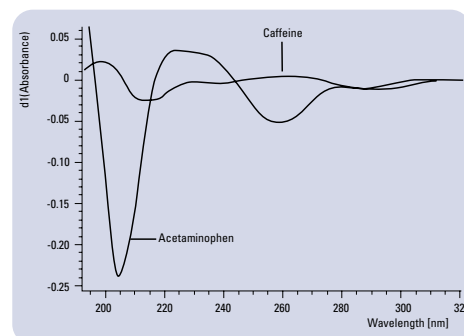
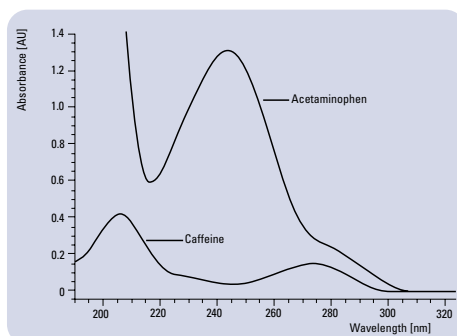
A variety of systems to meet your application needs

The Agilent 8453 is the most productive UV-Visible spectroscopy system available. You'll get more work done in less time with its combination of ease of use, fast spectral acquisition, fast data evaluation, report generation and automation. A full range of sampling accessories (including sipper, autosampler and multicell transport) are software controlled to further enhance automation.



Dissolution Testing System

- Maximum flexibility and productivity.
- Scalable sampling from manual off-line through fully automated on-line with up to four baths.
- Integration into fully automated robotic systems.
- Customized calculations and result reports.
- Built-in tools for compliance with GLP requirements.



Absorbance spectra (left) and first-order derivatives (right)

DESCRIPTION

PRODUCT NO.

8453 UV-Visible Value System

G1812AA

Includes spectrophotometer, PC, CD-ROM, monitor, software, and printer.

8453 Pharmaceutical UV-Visible System

G1815AA

Includes spectrophotometer, PC, CD-ROM, monitor, general purpose, advanced and Security Pack software and printer.

8453 Dissolution System

Complete systems including IQ and OQ/PV
Includes spectrophotometer, dissolution software and sampling systems.

8453 OQ/PV

H4036A

Tests discrete subsystems and integrated testing of complete instrument.

Accessories

Peltier Temperature Controller

89090A

External Temperature Sensor

89090A #200

Eight-Position Multicell Transport

G1120A

Automated Sipper System for 8453

89068D

XY Autosampler

G1811A

Thermostatable Cell Holder

89054A

Cell Stirring Module

89055A

8453 Lamps

Deuterium lamp assembly

2140-0605

OQ/PV Consumables Cuvettes

OQ/PV Standards kit-1 for UV/VIS

5063-6503

OQ/PV Standards kit-2 for UV-VIS

5063-6521

OQ/PV Hardware kit for UV-VIS

5063-6623

Software for the 8453 UV-Visible Spectrophotometer

Software for Agilent 8453 and 8452 Spectrophotometers

The Agilent ChemStation for UV-Visible spectroscopy provides instrument control, data acquisition and data evaluation for the Agilent 8453 spectrophotometers. Task-based graphical user interfaces make the software very easy-to-use.

General Purpose Software

Agilent ChemStation general purpose software for UV-Visible spectroscopy allows control of instrument and accessories and standard general data features.

The general purpose software controls the 8453 and 8452 spectrophotometers and accessories. It includes all the functionality you need for general purpose and routine testing and is perfect for QA/QC labs. Featuring a highly interactive graphical user interface, it's more intuitive and easier to learn and use than ever. Includes an extensive on-line help system for tutorial assistance and how-to instructions.

Advanced UV-Visible Software

This add-on software provides a more flexible system for research and methods development, with easy transfer of the methodologies to the QA/QC lab. It includes advanced capabilities such as:

- Multi-component analysis.
- Method optimization tools.
- Confirmation analysis.
- Macro programming.
- Advanced automation.
- Advanced spectral processing and data analysis functions.

Biochemical Analysis Software

This add-on software is designed for the needs of biochemists. It includes standard methods for qualitative and quantitative analysis of nucleic acids and proteins, single and multicell kinetics with various rate calculations. Add the optional Peltier temperature controller to perform thermal denaturation studies such as DNA melt testing and protein unfolding.

Agilent ChemStation dissolution testing software

A dedicated pharmaceutical application software for the Agilent 8453 spectrophotometer for dissolution testing.

DESCRIPTION	PRODUCT NO.
General Purpose UV-Visible ChemStation Software <i>Includes full control of 8453 and 8452 spectrophotometers and accessories, standard tasks, verification and diagnostics mode.</i>	G1115AA
Advanced UV-Visible Software <i>Adds method development tools, advanced data analysis functions, multicomponent analysis, confirmation analysis, macro programming.</i>	G1116AA
Biochemical Analysis Software <i>Adds biochemical application features such as single and multicell kinetics, nucleic acid analysis and thermal denaturation studies.</i>	G1117AA
Dissolution Software <i>Adds off-line and on-line dissolution testing capabilities to the general purpose software.</i>	G1118AA
UV-Visible ChemStation Software Upgrade	G1102AA
Dissolution Testing Software Upgrade	G1810AA
Security Pack for UV-Visible ChemStation <i>Modifies advanced and dissolution testing software to support the requirements for electronic records and signatures (21 CFR Part 11).</i>	G1813AA

Security Pack for UV-Visible ChemStation

Modifies advanced and dissolution testing mode to support the requirements for electronic records and signatures (21 CFR Part 11).

Solutions for a broad range of applications in a variety of industries

Agilent Technologies pioneered the development of this technique with the Agilent Capillary Electrophoresis system. Innovations include diode array detection in CE, the extended light-path capillaries, automated fraction collection, capillary electrochromatography (CEC), the high sensitivity detection cell and fully integrated solutions for CE/MS.



Efficient and quick analyses

- High sensitivity diode-array detector.
- Extended Light Path capillaries and high sensitivity cell for increased sensitivity.
- Automated spectral library for compound identification and confirmation.
- Easy-to-use, quick change capillary cartridges.
- Sample tray with random access of 48 positions.
- Off-line buffer replenishment, so sample tray positions do not have to be sacrificed.
- Peltier temperature control of capillary for reproducible migration time and quantitative analysis.
- CEC-ready (Capillary Electrochromatography) with high pressure.
- Fully integrated for CE/MS.

CE supplies and solutions for:

- Chiral Methods Development
- Double stranded DNA/PCR
- Inorganic Anions
- Organic Acids
- Oligonucleotides

- Combined CE and Capillary electrochromatography (CEC)
- CE/MS
- Automated Fraction Collection
- High Pressure Flushing
- New Integrated Software
- Iso-electric Focusing (IEF)

CE Validation Packages

- Instrument Qualification
- Operational Qualification/ Performance Verification

DESCRIPTION	PRODUCT NO.
3D Capillary Electrophoresis System <i>Includes 3D Capillary Electrophoresis instrument, PC, monitor, software and printer.</i>	G1602A
High Sensitivity Cell	G1602A #021
ChemStation Software for CE Systems <i>Includes Capillary Electrophoresis instrument control, data acquisition, data analysis, reporting.</i>	G1601A
CE MS ChemStation Add-on Software	G2201AA
3DCE ChemStation Software Upgrade <i>For customers upgrading from an existing revision of G1601A to the latest revision (G1601A).</i>	G1645A
Additional CE Instrument Control SW Module <i>Adds control, data acquisition of and evaluation from one CE instrument to existing LC (G2170AA), GC (G2070AA), A/D (G2072AA) or CE (G1601A) ChemStation.</i>	G2172AA

2100 Bioanalyzer

The first commercially available lab-on-a-chip product - your personal assistant in life science

The Agilent 2100 bioanalyzer is a unique analysis tool capable of handling nucleic acids, proteins, and cells on one platform. The specific applicability to certain sample classes is based on the use of kits that include sample-specific reagents and chips. LabChip® kits for a variety of RNA, DNA, protein and cell assays are available.

Together with the LabChip kits,
developed by Caliper Technologies Corp.,
the Agilent 2100 bioanalyzer integrates

sample handling

separation and detection

and data analysis within a
single, compact system.

With lab-on-a-chip...

- Miniaturized fluid pathways give shortened run times
- Micro-fabricated chips yield better reproducibility than conventional technologies
- Versatile chip design enables flexible experiment design on one system
- Microscale format minimizes sample use



LabChip® and the LabChip Logo are registered trademarks of Caliper Technologies Corp. in the U.S. and other countries.



DESCRIPTION

PRODUCT NO.

Agilent 2100 Bioanalyzer System

Includes 2100 bioanalyzer, HP PC and color printer, bioanalyzer system software, vortex mixer with chip adapter, and startup accessories. With startup service and operational services.

G2940BA

Agilent 2100 Bioanalyzer Multi-Instrument System

Includes 2100 bioanalyzer, HP PC and color printer, RS 232 4-port card, bioanalyzer system software, vortex mixer with chip adapter, and startup accessories. With startup service and operational services.

G2942BA

Agilent 2100 Bioanalyzer Laptop System

Includes 2100 bioanalyzer, HP Omnibook and color printer, bioanalyzer system software, vortex mixer with chip adapter, and startup accessories. With startup service and operational services.

G2943BA

Agilent 2100 Bioanalyzer Instrument

Includes chip priming station, test chip kit, setup poster, site and safety manual. Additional instrument for multi-instrument operation.

G2938B

Cell Assay Extension

Enables simple flow cytometric analysis with the Agilent 2100 bioanalyzer. Includes pressure cartridge, cell fluorescence software, cell fluorescence checkout kit, and cell test chip kit. With startup service and operational service.

G2944AA

Agilent 2100 Bioanalyzer Software Package

Includes bioanalyzer system software. Only needed for use with the Agilent 2100 bioanalyzer instrument (G2938B) if ordered stand-alone. With start-up service and operational services.

G2941AA

Agilent 2100 Bioanalyzer Data Organizer

Software for a data storage and retrieval application with web-based search capability. For data files generated with the Agilent 2100 bioanalyzer.

G2945AA

It's really easy . . .

. . . Prepare chip . . .

. . . Run analysis . . .

Visit www.agilent.com/chem/labonachip

. . . Check results.

The Agilent 2100 Bioanalyzer products are only available in selected countries. Please contact Agilent Technologies directly with your inquiries.

Kits for the Agilent 2100 Bioanalyzer



Ordering options for total flexibility

The Agilent 2100 Bioanalyzer is supplied with operating software, PC, printer and a variety of accessories.

Single bioanalyzer system

A simple PC controlling a single 2100 bioanalyzer unit.

Multi bioanalyzer system

A powerful PC with capabilities to control up to four 2100 bioanalyzer units.

Laptop bioanalyzer system

A laptop controlling a single 2100 bioanalyzer, saving valuable bench space.



LabChip® and the LabChip Logo are registered trademarks of Caliper Technologies Corp. in the U.S. and other countries.

The Agilent 2100 Bioanalyzer products are only available in selected countries. Please contact Agilent Technologies directly with your inquiries.

Kits	PRODUCT NO.
RNA 6000 Nano LabChip Kit* For analysis of messenger and total RNA. A lower marker is included with the RNA Nano reagents. Note: For quantitation of RNA samples, an RNA 6000 Ladder (cat # 7152) must be purchased from Ambion, Inc.	5065-4476
RNA 6000 Pico LabChip Kit* For high sensitivity analysis of total RNA and mRNA samples.	5065-4473
Ambion RNA Ladder 3 vials RNA ladder - 20 µl aliquots. To be ordered from Ambion Inc.	Ambion Cat # 7152
DNA 500 LabChip Kit** For sizing and quantitation of dsDNA fragments from 25 to 500 bp.	5064-8284
DNA 1000 LabChip Kit** For sizing and quantitation of dsDNA fragments from 25 to 1000 bp.	5065-4449
DNA 7500 LabChip Kit** For sizing and quantitation of dsDNA fragments from 100 to 7500 bp.	5064-8230
DNA 12000 LabChip Kit** For sizing of dsDNA fragments from 100 to 12000 bp.	5064-8231
Protein 200 Plus LabChip Kit** For sizing and analysis of proteins from 14 to 200 kD.	5065-4480
Protein 50 LabChip Kit** For rapid sizing and analysis of proteins from 5 to 50 kDA.	5065-4484
Cell Fluorescence LabChip Kit For analysis of fluorescence parameters of cell samples. Includes reagents, 25 LabChips, and reagent kit guide.	5065-4488
Cell Fluorescence Checkout Kit For testing proper cell assay operation. Includes reagents, 7 Checkout LabChips, red beads, blue beads, and reagent kit guide.	5065-4486
Cooled Reagents and Supplies	
Cooled DNA 12000 Reagents & Supplies	5065-4438
Cooled DNA 7500 Reagents & Supplies	5065-4437
DNA 1000 Cooled Reagents	5065-4451
Cooled DNA 500 Reagents & Supplies	5065-4440
RNA 6000 Pico Cooled Reagents	5065-4472
RNA 6000 Nano Cooled Reagents	5065-4475
Cooled Protein 200 Plus Reagents/Supplies	5065-4482
Cooled Protein 50 Reagents and Supplies	5065-4485
Columns and Accessoires	
Test Chip Bundle Used to aid in instrument troubleshooting and diagnosis. Includes 5 leak current test chips, 1 autofocus test chip, 1 electrode/diode test chip.	G2938-68100
Cell Test Chip Kit Includes cell autofocus chip and documentation.	G2938-68200
16-Pin Cartridge Removable electrode cartridge containing 16-pin electrode assembly configured to fit in the wells of a LabChip. For molecular assays.	5064-8244
16-Pin Bayonet Cartridge Removable cartridge with detachable 16-pin electrode assembly for easy cleaning. Pin set layout identical with 16-pin cartridge. For molecular assays.	5065-4413
Pressure Cartridge Removable cartridge with pressure adapter. For use with an additional Agilent 2100 bioanalyzer (G2938B) in a multi-instrument system equipped with the Cell Assay Extension (G2944AA).	5065-4492
Chip Priming Station Used to load gel matrix into a chip with a syringe provided with each LabChip kit. Includes priming station, stop watch and 2 syringe clips.	5065-4401
Vortex Mixer Adapter Replacement part for IKA vortexer. Foam insert and plastic head mount for vortexer. Designed to hold chip firmly in place while vortexing.	5022-2190
Adjustable Clip Used together with syringe to apply defined pressure for chip priming.	5042-1398
Gasket Kit for Chip Priming Station Includes 1 syringe adapter, 10 gaskets and 1 mounting ring.	G2938-68716
Fuse for Power Supply 1A/250 V	2110-0007
RS 232 Connector Cable	G2938-81605
Pressure Adapter Kit Includes 1 mounting ring and 5 pressure adapters with gaskets.	5065-4478

*Kit includes reagents, supplies, 25 LabChips, 2 cleaning chips, 1 syringe, and reagent kit guide.

**Kit includes reagents, supplies, 25 LabChips, 1 cleaning chip, 1 syringe, and reagent kit guide

Microarray Scanner

Agilent's automated DNA Microarray Scanner

Agilent's next generation microarray scanner introduces a number of quality features for high throughput analysis of industry standard, 1" x 3", glass microarray slides. Its integrated platform provides sensitive and quantitative analysis of microarrays offering researchers a comprehensive, flexible and convenient approach to analyze microarrays for gene expression.



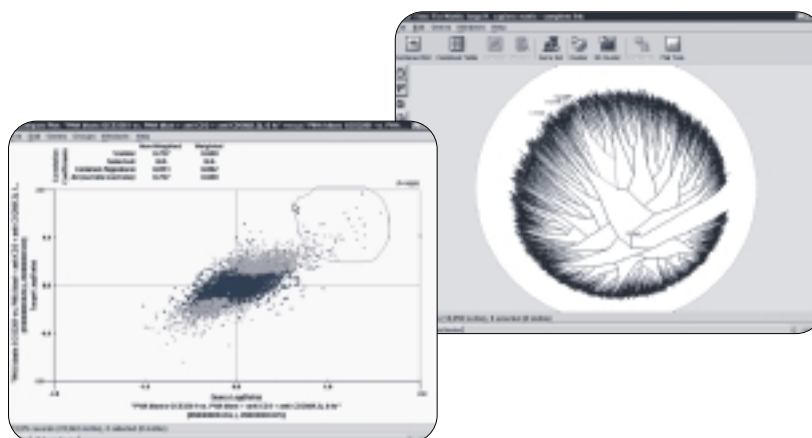
Sensitive, rapid, high resolution scanning

- 48-slot carousel for high throughput.
- State-of-the-art 20mW lasers.
- Simultaneous dual color scans.
- Rapid scans – typically 8 minutes.
- Integrated bar code reader.
- Industry first dynamic auto focus for optimum microarray imaging.

DESCRIPTION	PRODUCT NO.
Microarray Scanner <i>Includes microarray scanner, 48 position carousel, 50 slide holders, Feature Extraction and Analysis software, PC data system, system install, familiarization.</i>	G2565BA
Scanner Carousel <i>Includes 48 position carousel.</i>	G2565BA #001
Scanner Slide Holder Kit <i>Includes 25 slide holders.</i>	G2565BA #002
<i>Upfront Extended Warranty, 1 year</i>	G2565BA #11K
<i>Upfront Extended Warranty, 2 years</i>	G2565BA #11L

Software for Microarray Analysis

Discover more on the spot with Agilent's confidence building Feature Extraction Software and high-powered GEML-based Rosetta Resolver® and Luminator™ Gene Expression Data Analysis suite.

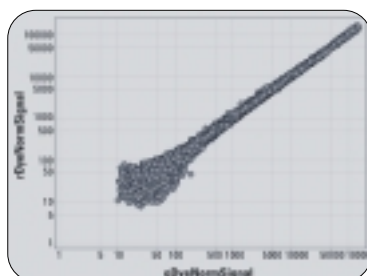


DESCRIPTION	PRODUCT NO.
Feature Extraction Software License	G2568AA
Rosetta Resolver® <i>Gene Expression Data Analysis System</i>	# varies
Rosetta Luminator™ <i>Gene Expression Data Analysis System</i>	# varies

Catalog Microarrays

Consistent, quick and complete Catalog Microarrays

As an industrial scale manufacturer, Agilent is in a position to provide QC qualified, high content microarrays on a continuing basis. Agilent's ongoing program to develop a series of pre-made, off-the-shelf microarrays, packaged as ready to go kits has started with human catalog microarrays and will be followed by a variety of additional host organism catalog microarrays.



cDNA Microarray Kits

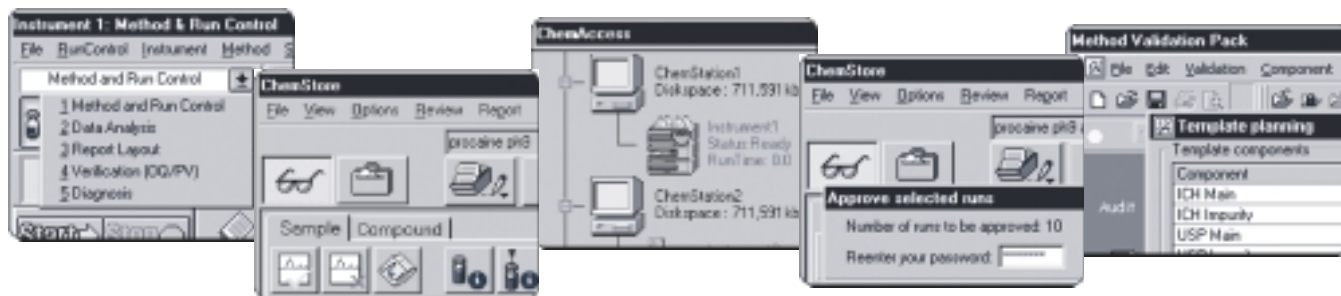
DESCRIPTION	PRODUCT NO.
Kit Contents Four identical microarrays (printed on two 1 x 3" glass slides), deposition hybridization buffer, protocol, CD with microarray quality and layout information in various file formats	
Human 1 cDNA Each microarray: over 12000 of Incyte's Human Drug Target and UniGene Clones	G4100A
Human 2 cDNA Each microarray: over 14000 of Incyte Human Foundation 1 & 2 Clone Sets	G4101A
Mouse cDNA Each microarray: over 8500 unique clones from Incyte's Mouse UniGene 1 Clone Set	G4104A
Rat cDNA Each microarray: over 14500 unique clones from Incyte's Genomic Rat Toxicology and Foundation 1 Clone Sets	G4105A
Reagents Fluorescent Direct Label Kit	G2557A
Deposition Hybridization Kit	G2558A
Low Input RNA Fluorescent Linear Amplification Kit	5184-3523

Oligo Microarray Kits

DESCRIPTION	PRODUCT NO.
Human 1A Oligo Microarray 5 microarrays on 5 standard 1 x 3" glass slides, CD-ROM containing feature information, user manual	G4110A
Human 1B Oligo Microarray 5 microarrays on 5 standard 1 x 3" glass slides, CD-ROM containing feature information, user manual	G4111A
Mouse Development Oligo Microarray 5 microarrays on 5 standard 1 x 3" glass slides, CD-ROM containing feature information, user manual	G4120A
Rat Oligo Microarray 5 microarrays on 5 standard 1 x 3" glass slides, CD-ROM containing feature information, user manual	G4130A
Yeast Oligo Microarray 10 microarrays on 5 standard 1 x 3" glass slides, CD-ROM containing feature information, user manual	G4140A
Arabidopsis 1 Oligo Microarray 4 microarrays on 2 standard 1 x 3" glass slides, hybridization buffer, CD with layout, QX, XML & (.gal) files	G4104A
Arabidopsis 2 In-Situ Microarray	contact us for details

Visit agilent.com/chem/dna

Industries' data system of choice for control of a wider range of techniques



ChemStation Base Software

The ChemStation base software is the industries' most widely sold data system, handling all applications including LC, LC/MS, GC, CE and CE/MS. This base provides the ideal platform for labs that need an easy-to-learn and easy-to-use system, which can be scaled up and extended as the lab's needs grow.

- Easy-to-use graphical user interface for all laboratory tasks, including instrument control, data acquisition and automation, analysis and reporting of two- and three-dimensional data, as well as system suitability testing and diagnostics.
- Level-4 instrument control of Agilent LC, LC/MS, GC, CE and CE/MS instruments for reliable and traceable control, including automatic tracking of serial numbers and firmware revisions, and early maintenance feedback. EMF alerts technical personnel to perform due maintenance tasks before failure.
- PC-to-instrument connection based on LAN technology, eliminating distance limitations between controller and analytical equipment and providing the platform for seamless scale-up to distributed multi-technique configurations.

ChemStore Data Organization Module

ChemStore is an add-on software module for the ChemStation base software, helping laboratories to increase productivity by providing a central and secure repository for easy organization, review, approval and storage of chromatographic data. ChemStore integrates seamlessly into the ChemStation's interface and offers a scalable solution for the management of data from LC, LC/MS, GC, CE and CE/MS instruments as well as from instruments connected through A-to-D converters.

ChemAccess Remote Access Module

ChemAccess is an add-on software module for the ChemStation base software, helping laboratories to increase productivity by providing remote control and monitoring of chromatographic instruments within a distributed laboratory environment. ChemAccess integrates seamlessly into the ChemStation's interface and provides access to ChemStation PCs and instruments across the entire network.

Security Pack

Security Pack is an add-on software module for the ChemStation base software, helping laboratories to increase productivity by accelerating review and approval of results as well as providing support of regulatory requirements such as the FDA's ruling on electronic records and signatures, 21 CFR Part 11. Security Pack requires the ChemStore add-on module and is available for single PC configurations as well as distributed multi-technique configurations in a client-server network.

Method Validation Pack

Method Validation Pack is an add-on software module for the ChemStation base software, helping laboratories to increase productivity by automating the entire process of method validation from planning, through test execution, to presentation of the final report. Method Validation Pack requires the ChemStore add-on module and is available for single PC configurations as well as distributed multi-technique configurations in a client-server network.

ChemStation Plus NDS

ChemStation Base Software

DESCRIPTION	PRODUCT NO.
GC	
ChemStation Software for one GC	G2070AA
ChemStation software for additional GC	G2071AA
GC ChemStation Software License to execute ChemStation on another PC. Includes license and user information only.	G2075AA
A/D	
ChemStation software for A/D	G2072AA
ChemStation software for additional A/D	G2073AA
A/D ChemStation Software License to execute ChemStation on another PC. Includes license and user info only.	G2077AA
HPLC	
HPLC 2D ChemStation Software	G2170AA
ChemStation Software for additional 2D LC	G2171AA
HPLC 2D license to execute on another PC. Includes license and user information only.	G2175AA
HPLC ChemStation Spectral SW Module. Adds capability to evaluate DAD and FLD spectra to an HPLC 2D ChemStation.	G2180AA
HPLC 3D Spectral Module license to execute on another PC. Includes the license and the user information only.	G2185AA
CE	
ChemStation software for CE Systems	G1601A
ChemStation software for additional CE	G2172AA
Data Analysis Only	
ChemStation Software Data Analysis. Only used for evaluation of GC, 2D LC (no diode array or MSD) and A/D data only.	G2090AA
HPLC ChemStation Data Analysis Software. Includes data evaluation only of chromatographic and LC spectral data.	G2190AA
ChemStation Bundles	
Single Instrument GC ChemStation	G1875AA
High Performance GC ChemStation	G1876AA
Single Instrument LC 2D ChemStation	G1317A
Single Instrument LC 3D ChemStation	G1319A
Single Instrument A/D ChemStation	G2112AA

ChemStation Plus Add-on Software modules

DESCRIPTION	PRODUCT NO.
ChemStore Server Software	G1410A
ChemStore C/S Database Client Software. Includes MS Access based database for data organization, review, cross sample reporting and charting. For ChemStations for LC, LC/MSD, GC, CE, CE-MSD and A/D.	G2181BA
ChemStore C/S Review Client License To execute on another PC.	G2186BA
ChemAccess Server Software	G1494A
ChemAccess 5 User Client Software	G1495A
ChemStation Plus Security Pack. Adds the secure ChemStore relational database software module to the ChemStation Plus SW for A/D, GC, CE, LC and CE/LC-MSD. Supports 21 CFR part 11.	G2183AA
License to use G2183AA on another PC Includes manual, license and media. Supports 21 CFR part 11.	G2187AA
Method Validation Pack	G2184AA

ChemStation Accessories

DESCRIPTION	PRODUCT NO.
12-port LAN Hub. Allows up to twelve devices to interface to a local laboratory LAN. Includes an 8-meter LAN cable.	G2402A
6890 LAN Communications Interface. Provides capability to connect a host computer over LAN. Includes ThinLan (coax) and 10/100BaseT (twisted pair) connectors, and cables.	G2335A
LAN Communications Interface For 6850 GC, 35900 A/D, and 1100 LC.	G1846A
Crossover Ethertwist Cable. To connect ChemStation to a networked instrument. Includes 10 ft. crossover wired ethertwist patch cable, category 5.	5183-4649

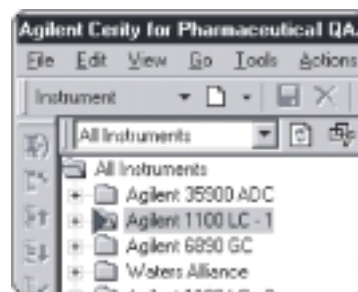
Cerity NDS

Get better net results – with lab-specific software that's designed to work the way you do!

Cerity NDS for Pharmaceutical QA/QC

This Agilent networked data system has been designed to meet the specific requirements of QA/QC labs in the pharmaceutical industry. It provides centralized management of chromatography data for labs with a few to few hundred instruments and many users. And, it helps labs to reduce operating and validation costs by adapting to the lab's workflow and by assuring compliance to regulations and quality standards.

- Adapts to lab's workflow
- Complies with 21 CFR Part 11
- Scales up seamlessly
- Includes built-in spreadsheet
- Provides Level-4 instrument control
- Protects existing investments



DESCRIPTION

PRODUCT NO.

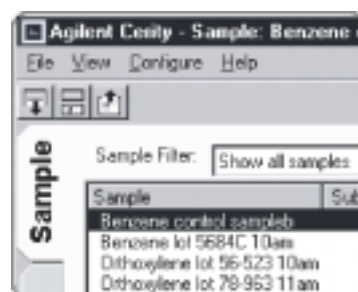
Cerity NDS for Pharmaceutical QA/QC

<i>Cerity for Pharmaceutical QA/QC Professional Software</i>	G4000AA
<i>Cerity for Pharmaceutical QA/QC Client/Server Software</i>	G4001AA
<i>Single-User License</i>	G4002AA
<i>Additional 5-User License</i>	G4002AA 005
<i>Additional 10-User License</i>	G4002AA 010
<i>License for Agilent 1100 Series HPLC Control</i>	G4061AA
<i>License for Waters Alliance HPLC Control</i>	G4062AA

Cerity NDS for Chemical QA/QC

The Cerity Networked Data System for Chemical QA/QC is ideal for non-regulated environments. The software centers on the sample rather than the analytical instrument. This makes running samples and analyzing results fast and easy. Once the system is configured, entering the sample name automatically selects the method and instrument. Running a sample requires only one or two mouse clicks. A simple user interface displays only the elements relevant to an operator's job, which speeds up tasks and greatly reduces errors. From one screen, users can configure up to 32 GCs and control any 8 GCs at maximum data

acquisition rates. The interface screen and online help features (which speed learning and troubleshooting) are localized into nine languages for clear and immediate understanding. Users have the ability to access SOPs and online resources through the software's integrated browser.



DESCRIPTION

PRODUCT NO.

Cerity NDS for Chemical QA/QC

<i>Single Instrument Cerity for Chemical QA/QC (compatible with Agilent 6890, 6850, micro, 4890D, and 5890 Series II GCs)</i>	G2085AA
<i>Single 4890D or 5890-II Cerity for Chemical QA/QC</i>	G2095AA
<i>Single micro-GC Cerity for Chemical QA/QC</i>	G2822AA
<i>Software Upgrade from G2822AA or G2095AA to G2085AA</i>	G2083AA
<i>Cerity for Chemical QA/QC PC Bundle (includes PC with CD-RW, 19-inch monitor, and laser printer)</i>	G1879AA
<i>Cerity for Chemical QA/QC software license for the control of and data acquisition and evaluation from one Agilent GC on an additional computer</i>	G2385AA

Support Services

Flexible support services to give you exactly what you need

Agilent support services cover all of your Agilent chemical analysis hardware and software maintenance, troubleshooting, repair, compliance and educational needs. With these services, you can achieve:

- Maximized instrument uptime.
- High system productivity.
- Extended instrument life.
- Fast problem resolution.

Industry service bundles meet specific needs

Agilent industry-focused service bundles are designed to meet the specific needs of the various industries.

These bundles contain essential services to keep your chemical analysis instruments in top condition for dependable operation. The special service bundles cost less than purchasing each service individually.

Training Courses

Agilent chemical analysis training courses help you get the most out of your investment by teaching you the skills you need to fully utilize your system's capabilities. More than 50 courses are offered, ranging from introductory levels to in-depth hands-on learning experience. For up-to-date training information and 24-hour a day registration, connect to our web site at www.agilent.com/chem.



Pharmaceutical Bundle

For the pharmaceutical, agricultural and other industries that must comply with rigorous quality and regulatory requirements.



- Telephone Support to Isolate and Resolve Hardware Problems – included without charge
- At-Your-Site Service Plus with consumables used during repair
- Annual On-Site Preventive Maintenance
- Annual Operational Qualification/Performance Verification

Life Sciences Bundle

For the specific needs of the life sciences industries.



- Telephone Support
- At-Your-Site Instrument Repair Services
- Annual On-Site Preventive Maintenance

Petrochemical Bundle

For the specific needs of the petroleum, chemical, petrochemical and other industries not subject to pharmaceutical regulatory compliance.



- Telephone Support to Isolate and Resolve Hardware Problems – included without charge
- At-Your-Site Service Plus with consumables used during repair
- All Off-Site Instrument Repair Services
- Annual On-Site Preventive Maintenance

Environmental Bundle

For the environmental, clinical and other laboratories that depend on mass spectrometers for sample analysis.



- Telephone Support to Isolate and Resolve Hardware Problems – included without charge
- At-Your-Site Service Plus with consumables used during repair
- All Off-Site Instrument Repair Services
- Annual On-Site Preventive Maintenance
- Annual Mass Spectrometer Ion Source Cleaning

Albania

Inalb
Phone: +355-4-23 02 82
koci@albmail.com

Algeria

see Morocco

Austria

Agilent Technologies
Österreich GmbH
Phone: (01) 25125 6800
Fax: (01) 25125 7365
analytik_austria@agilent.com
www.agilent.de

Wagner & Munz GmbH Austria
Phone: (01) 599994-80
office@wagnermunz.com
www.wagnermunz.com

Belarus

ODO Selenotechnologia
Phone: +375 172 590978
selen@mail.bn.by

Belgium

Agilent Technologies
Belgium S.A./N.V.
Phone: +32 (0)2 4049222
Fax: +32 (0)2 4049290
cag_belgium@agilent.com

VWR INTERNATIONAL bvba/sprl
Phone: +32 (0)16 385 284
www.vwr.com

Merck-Eurolab
Phone: +32 (0) 16 385011
info@merckeurolab.be

Bulgaria

Team Ltd.
Phone: +359-2-951-6883
team_cag@netbg.com

Croatia, Bosnia and Herzegovina

DANJAR d.o.o.
Phone: +385 1 365 5290
danjar@danjar.hr

Czech Republic

HPST s.r.o.
Phone: +420 2-440-01-243
info@hpst.cz

Denmark

Agilent Technologies A/S
Phone: +45 7013 0020
Fax: +45 4558 2440
analytical_denmark@agilent.com

Egypt

Agitech
Phone: 202 270 3266
agitech@link.net

Estonia

Quantum Eesti AS
Phone: +372-7-301 323
quantum@quantum.ee

Finland

Agilent Technologies Finland Oy
Phone: 01080 2220
Fax: 010 855 2667
kemial@agilent.com

Tamro MedLab Oy
Phone: 0204 45 3802
Fax: 0204 45 4717
tamrolab.tto@tamro.com

France

Agilent Technologies
N° AZUR : 0810 446 446
Fax : 0825 010 708
csc-france_analyse-chimique@agilent.com

Bios Analytique
Phone: 05 62 89 30 00

Bios Analytique - Agence
Régionale
Phone: 01 69 31 75 85

Chromoptic
Paris Phone: 01 69 31 41 65
info@chromoptic.de

Interchim
Phone: 04 70 03 73 09
interchrom@interchim.com

Interchim - Agence régionale Paris
Nord-Normandie
Phone: 01 41 32 34 40
interchrom@interchim.com

Germany

Agilent Technologies
Deutschland GmbH
Phone: (0800) 603 1000
Fax: (07243) 602 602
analytik_germany@agilent.com
www.agilent.de

Duratec Analysentechnik GmbH
Phone: (06205) 9450 0
info@duratec.de
www.duratec.de

GGA Glaswaren, Geräte und
Analysentechnik GmbH
Phone: (02841) 9871 300
gga@gga.de
www.gga.de

Omnilab-Laborzentrum
GmbH + Co. KG
Abt. OCS
Phone: (0421) 17599-351
info@omnilab.de
www.omnilab.de

Wagner & Munz GmbH
Phone: (089) 451023-0/-18
office@wagnermunz.com
www.wagnermunz.com

WiCom GmbH
Phone: (06252) 910 800
info@wicom.de
www.wicom.de

Greece, Cyprus

Hellamco
Phone: +30 210 689 52 60
management@hellamco.gr

Hungary

Kromat Kft.
Phone: +36 1 248 2110
peter.keresztes@kromat.hu

Ireland

Agilent Technologies Ireland Ltd.
Phone: 01 605 8324
Fax: 01 605 8323
cag_enquiry@agilent.com

Carl Stuart Ltd.
Phone: 01 452 3432
agilent@carlstuart.com

Israel

Eldan Electronic Instruments Ltd.
Phone: +972-3-902 1330
bensie@eldan.biz

Italy

Agilent Technologies Italia S.p.A.
Phone: 800 012575
(numero verde)
analitica_italia@agilent.com

Analitica S.n.c.
Phone: +39 080 3431366
info@analiticaweb.it

C.P.S. Analitica S.r.l.
Phone: +39 02 8954201
cps@cps.it

D.T.O. Servizi S.r.l.
Phone: +39 041 997234
info@dtoservizi.it

Stepbio S.r.l.
Phone: +39 051 634 3340
stepbio@tin.it

A.I. TECH S.r.l. (VAR)
Phone: +39 0131 325528
aitech@aitech.191.it

SRA Instruments Italia S.r.l. (VAR)
Phone: +39 02 92143258
info@srainstruments.com

Jordan

S.M.S. Scientific & Medical
Supplies Co.
Phone: +962 6 46 24 907
shammout_science@sms.com.jo

Kazakhstan, Kyrgyzstan

Dicosta Tech.
Phone: +7 3272 58 20 20
alexander_serazetdinov@cs.kz

Kuwait

see Lebanon

Latvia

Quantum Latvia Ltd.
Phone: +371 74 72 926
quantum@quantum.lv

Lebanon, Bahrain, Kuwait,

Qatar, Yemen
Technoline sarl
Phone: 961 1 50 2777
technoline@lynx.net.lb

Lithuania

Lokmis
Phone: +370-5-2151895
andrius@lokmis.lt

Macedonia, Montenegro

Altris d.o.o.
Phone: +389 70 230 229
altris@mol.com.mk

Mauritius, Reunion, Seychelles,

Madagascar
Ducray Lenoir Ltd
Phone: +230 202 77 00
duclen@intnet.mu

Moldavia

Laco-Alphatec s.r.l.
Phone: +373 2 210 213
laco@cni.md

Morocco

Sobovat SA
Phone: +212-22 23 01 98/85
sobovat@menara.net.ma

The Netherlands

Agilent Technologies
Netherlands B.V.
Phone: 020 547 2600
Fax: 020 547 2690
chem_benelux@agilent.com

Atas Benelux B.V.

Phone: 079 343 3931
benelux@atas.nl

VWR International B.V.

Phone: 020 4808 400
info@nl.vwr.com

Nigeria

M.I.S. Co Ltd
Phone: 234 1 269 43 39
okon_amana@misnigeria.com

Norway

Matriks AS
Phone: +47 815 32 560
post@matriks.no

Oman

IMTAC
Phone: +968 70 77 27 23 19
sambunathb@imtac.com

Poland

Perlan Technologies
Polska Sp.z o.o.
Phone: +48 22 549 1426
klient@perlan.com.pl

Portugal

Soquimica
Phone: 351 21 7165160
informacoes@soquimica.pt

Qatar

see Lebanon

Romania

Agilrom Scientific s.r.l.
Phone: +40 23 221 38 51
hires@mail.dntis.ro

Russian Federation

Interlab Inc.
Phone: +7 095 788 0983
InterLab@apg.ru

Saudi Arabia

Alfaisaliah
Phone: +966 1 462 42 66
ssaadi@alfaisaliah.com

Slovak Republic

Hermes LabSystems, s.r.o.
Phone: +421 2 64 306 657
hermes.plus@hermes-plus.sk

Slovenia

Chemass d.o.o.
Phone: 386 1 427 7560
miran.zalec@chemass.si

SPESS d.o.o.

Phone: +386 1 511 31 70
simona@spes.si

**SOUTH AFRICA, Botswana,
Lesotho, Namibia, Swaziland,
Angola, Malawi, Mozambique,
Zambia, Zimbabwe**
Chematrix Ltd.
Phone: +27 11 541 98 09
brucef@chematrix.co.za

Spain

Agilent Technologies Spain, S.L.
Grupo de Análisis Químico
Phone: 901 11 68 90
Fax: 34 916 376 505
cag_instalaciones@agilent.com

Andaluz de Instrumentación, S.L.
Polígono PISA
andaluza@andaluza.com
Sevilla Phone: 34 955 600 117
Madrid Phone: 34 913 656 481
Murcia Phone: 34 968 809 162
Valencia Phone: 34 961 329 033
Pontevedra Phone: 34 986 838 110

Anorsa

Phone: 34 933 006 050
anorsa@intercom.es

Proquinorte, S.A.

Phone: 34 944 423 350
proquinorte@clientes.euskaltel.es

Serviquimia, S.A.

socarsa@mhp.es
Barcelona Phone: 34 933 003 493
Tarragona Phone: 34 977 773 552
Castellón Phone: 34 964 255 946

Sweden

Agilent Technologies Sweden AB
Phone: 08 506 489 50
Fax: 08 506 489 51
cag_sweden@agilent.com

ChromTech AB

Phone: 08 464 80 20
info@chromtech-ab.se

Scantec Lab AB

Phone: 031-336 90 00
scantec.info@scanteclab.se

Switzerland

Agilent Technologies
(Schweiz AG)
Phone: 0848 803 560
Fax: 01 735 97 44
cag_qualify@agilent.com
www.agilent.ch

Infochroma AG
Phone: 041 740 18 28
infochroma@swissonline.ch
www.infochroma.ch

Milian SA

Phone: 022 884 16 88
milian@milian.com
www.milian.com

Tunisia

Précision Electronique
Phone: +216 7 1 750 850
pe.analytique@tunelec.com.tn

Turkey

SEM Laboratuvar
Phone: +90 216 340 01 09
mbalci@semmlab.com.tr

Ukraine

Alsi Ltd.
Phone: +380 44 246 10 40
andrey_esaulenko@alsi.kiev.ua

United Arab Emirates

Al Khayat Scientific Supplies
Phone: +971 4 267 18 88
akgt@emirates.net.ae

United Kingdom

Agilent Technologies UK Limited
Phone: 0845 712 5292
Fax: 0161 492 7171
cag_enquiry@agilent.com

Crawford Scientific Limited
Phone: 01357 522961
crawford.sci@dial.pipex.com

Esslab Limited

Phone: 01702 555577
sales@esslab.com

Hichrom Limited

Phone: 0118 930 3660
sales@hichrom.co.uk

Metlab Supplies Limited

Phone: 01244 526300
sales@metlabsupplies.co.uk

Carl Stuart Ltd.

Phone: 0289 055 1705
agilent@carlstuart.com

Uzbekistan

Fortek
Phone: +998 71 173 93 01
Rustam_Djunaydullaev@fortek.uz

Yemen

see Lebanon

Yugoslavia

DSP Chromatography d.o.o.
Phone: +381 11 311 90 81
darko@dsp-c.co.yu

