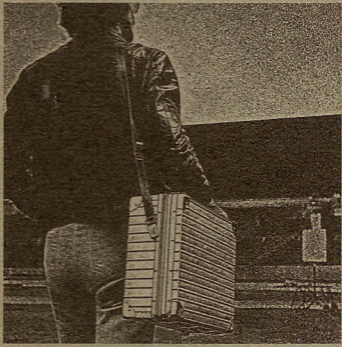
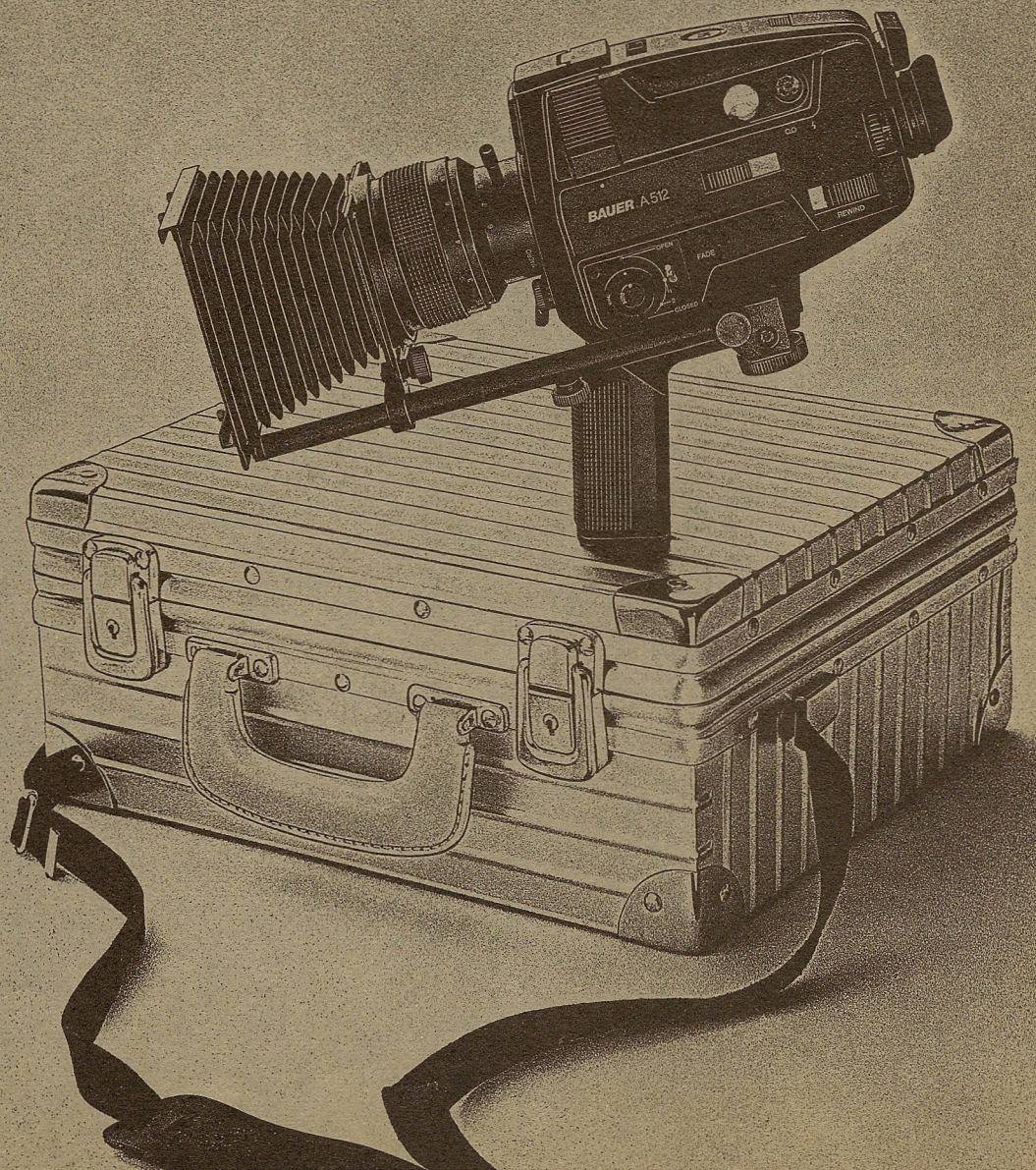


PROFI SET

**Professional-Set.
Complete Super 8
Equipment
for the cameraman.**

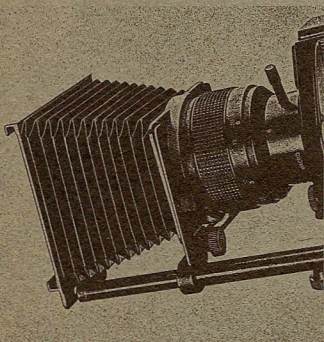


BAUER



The key to professional filming.

Equipment contained in the Bauer Pro.-Set.



Super 8 filming is not merely a popular leisure time occupation for occasional movie-men, holiday movie-makers or family filmers. With a little phantasy and skill, Super 8 filming can, in terms of composition, hold its own with professional films. But interest in filming and phantasy on their own are not enough; the appropriate tool must be used too.

We have together an exclusive set for the keen Super 8 filmmaker in the shape of the Bauer Pro.-Set which encompasses the countless possibilities for filming with Super 8, standard filming techniques and professional trick effects.

The heart of this set is the Bauer A 512, a Super 8 movie camera that can, with good reason, be rated as "the top class for the cameraman".

A world top-quality lens: the Schneider multi-coated Varigon f 1.8/6-70 mm, an above average large viewfinder field, TTL light meter with Booster, automatic time exposure device, ideal weight distribution for well balanced camera handling, etc., etc.

The accompanying brochure gives you all the date and tells you of the scope of the filming possibilities offered by this camera. We would like to make special emphasis here, on the "Pro-Set level", of the fact that the Bauer A 512 has a genuine variable sector shutter. And an automatic film rewind feature; for fade-in and fade-out, for lap dissolves or cross-fading, for multiple exposure and for reverse filming.

The second component of the Bauer Pro.-Set is a bellows "compendium" that can be attached to the camera. With masks and diaphragms, it puts into your hands all the tricks of the trade that so enrich professional films.

The third object in the Pro.-Set is a shoulder support. It makes you the Rock of Gibraltar personified when you are filming with the camera hand-held.

With this unique set we give you the key to professional film making. It comes in the strong Pro.-Set aluminium case complete with carrying strap.

This Bauer equipment comes to you from the house of Robert Bosch GmbH, Photokino Division, Stuttgart, West Germany.

Bauer A 512 Super 8 camera.

Complete with camera case, camera wrist strap a pliable lens-hood, a synchronous adapter for flash exposures and a manually operated electrical shutter release.

A bellows "compendium" with attachments, frames and rods. In addition, a complete set of masks and sliding diaphragms as well as a glass plate and accessoires for smoke and grease screens.

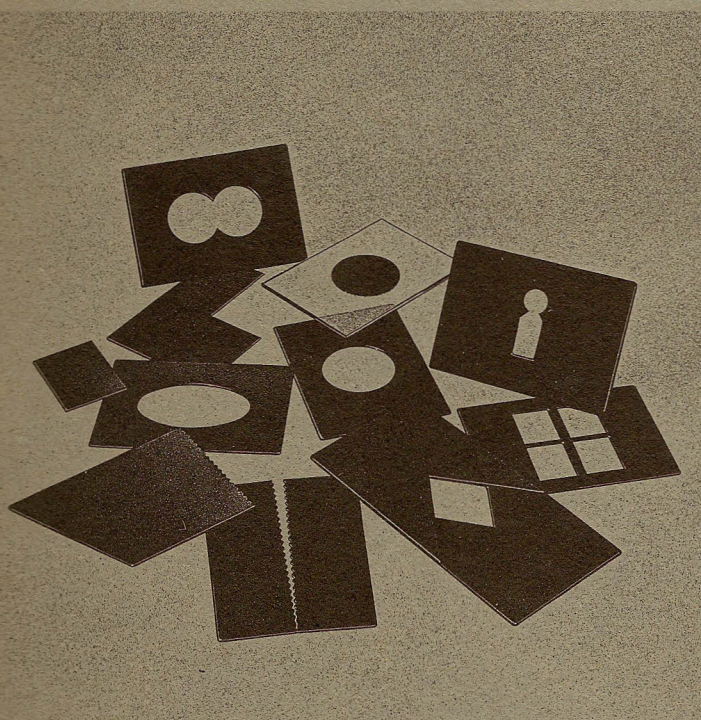
Fold-up shoulder support. With draw-out telescopic support tube and swivel butt-piece. Allen-type key for adjustment.

A stable aluminium case with two locks, carrying handle, adjustable shoulder strap. Internal sub-divisions in foam-rubber for the camera, bellows "compendium", shoulder support, accessories, operating instructions, and 7 film cassettes. Two keys and a key ring.

The right to make changes is reserved.



With the bellows "compendium" you introduce amazing effects into your movies.



If you have ever watched professional film-makers at work then, as an interested movie-maker yourself, it is certain that you have wondered at their technical equipment with more than a just touch of envy! For instance, without a "compendium" a cameraman would not even dream about beginning to shoot. That's because with all the high demands made on modern picture composition and the "language of the screen" he has to have every creative possibility available to him – and that includes the whole arsenal of masking and fading tricks which can only be achieved with the universal adapter, "the compendium". Not only that, by the way, the compendium is also an ideal device for preventing disturbing stray light from entering the lens. That means that your films will have even more brilliant colours.

With the Bauer Pro.-Set – Bauer A 512 plus the compendium with masking and fading set – you now have, with Super 8, the same fascinating scope of composition that the professional film-makers have at their disposal and have used for many a year.

The masks and diaphragms contained in the Bauer Pro.-Set belong to the basic equipment needed for the most popular tricks and effects. Needless to say, a myriad of other fit-on pieces can be made out of black cardboard or other material – the possibilities for composition are limitless. The following are some of the tricks and effects with which you are familiar from films and television and which you can do yourself:

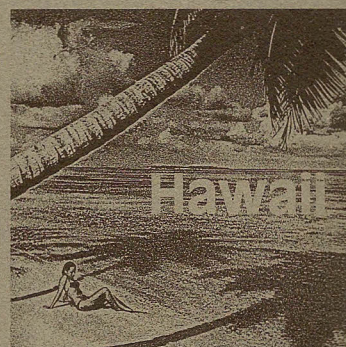
1. Trick effects using picture field limitation and employing masks and fade-out with diaphragms.

- 'Wiper' diaphragm
- 'Swallow-Tail' diaphragm
- 'Curtain' diaphragm
- 'Telescope' mask
- 'Binoculars' mask
- 'Key-hole' mask
- 'Window' mask
- Further effects using self-made masks and diaphragms



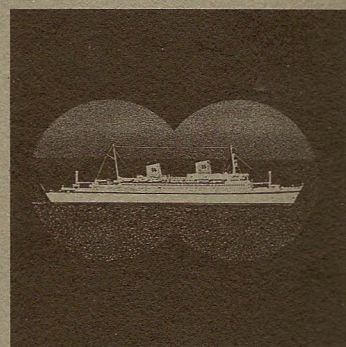
2. Trick effects with picture division cut-out and reverse-cut-out diaphragms and multiple exposure.

- Circular center field
- Oval center field
- Sub-division into quarter fields
- Split-screen film, left/right
- Split-screen film, top/bottom
- Horizontal picture displacement
- Further effects using self-made Kasch and reverse-Kasch diaphragms.



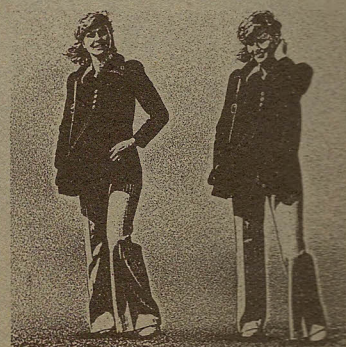
3. Trick effects with inserted glass plate

- Titling (e.g. with rub-on adhesive letters on the clear glass plate provided)
- Haze effect with grease screen (Vaseline on glass plate)
- Smoke effect screen (plastic tube for blowing in cigarette smoke is supplied)
- Further effects with any desired special glass (e.g. ribbed glass, rippled or "cathedral" glass)



4. Use of the compendium

- As an optimally variable "against-the-light" lenshood
- As carrier for slides or special filters (e.g. screen filters)



The shoulder support makes (possible) steady camera operation.

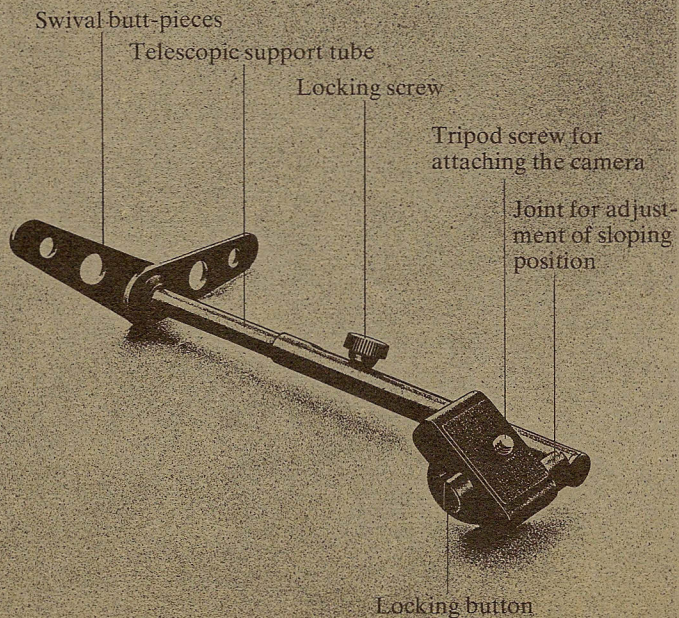
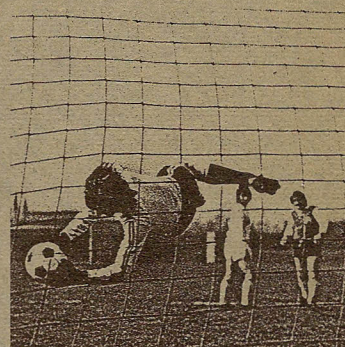
The camera is the cameraman's tool. If you take the Bauer A 512 in your hand you will discover that it "sits" just right; easy to grip and well balanced.

So what is the need for a shoulder support? Because we are of the opinion that in fast moving situations the cameraman should be able to take hand-held shots — do telephoto work, sports photography, reporting etc. — that are as steady as a rock.

Steadying the camera with the shoulder support brings another advantage in that one hand is free for additional operations on the camera. Not only that: In many cases the shoulder support replaces the tripod and thus makes the camera more mobile.

Naturally these accessories can be employed with or without the compendium. In order to accommodate an individual manner of holding the camera, the telescopic support tube can be drawn out up to a total length of 240 mm and locked in any sloping position. Both of the butt-pieces can also be adjusted to any desired position.

An additional advantage: When you are not using it, you can fold up the support tube against the camera. When you unfold it, the locking mechanism ensures that it automatically adopts the originally selected sloping position again.



Your Bauer specialist

Robert Bosch GmbH
Geschäftsbereich Photokino
P.O.B. 109
7000 Stuttgart 60
Germany

