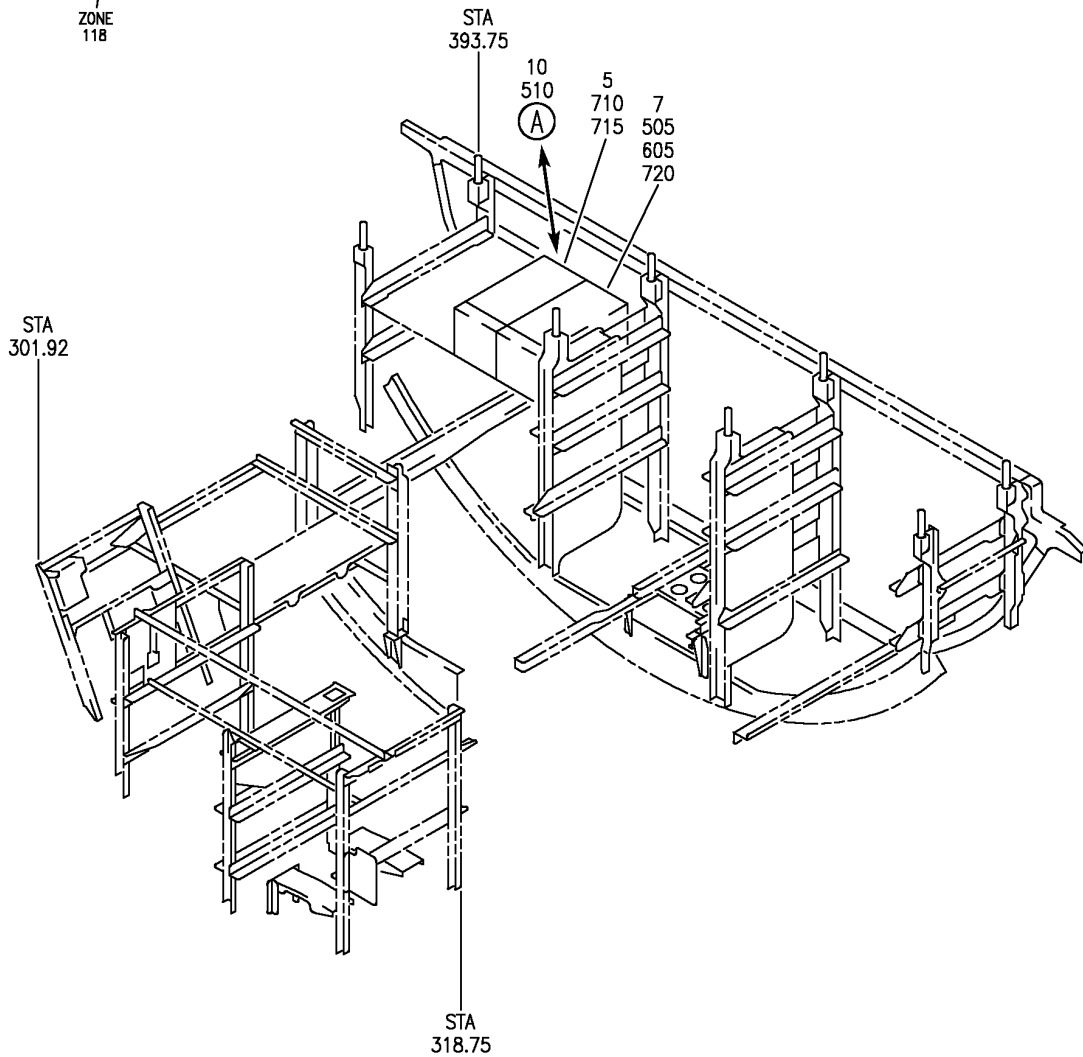
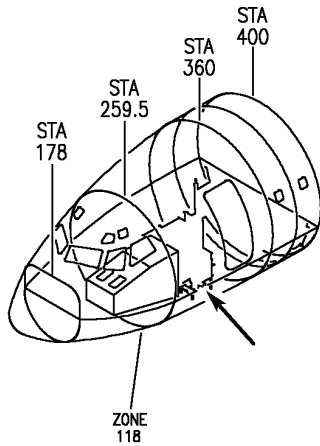


HF COMMUNICATION SYSTEM

HAP
OCT 10/06

23-11-00
SECTION TITLE
PAGE 1

BOEING
 737-600/700/800/900
 PARTS CATALOG (MAINTENANCE)



E 23112101 SHT 1 REV 143

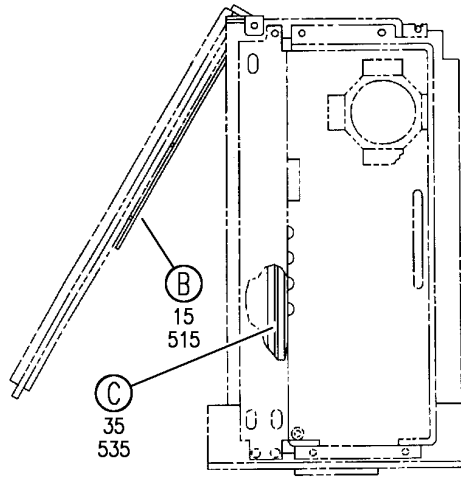
EQUIPMENT INSTL-E4-1 SHELF E/E BAY HF COMM
 FIGURE 1 (SHEET 1)

23-11-21-01

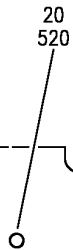
HAP
 OCT 15/08

23-11-21-01
 PAGE 0

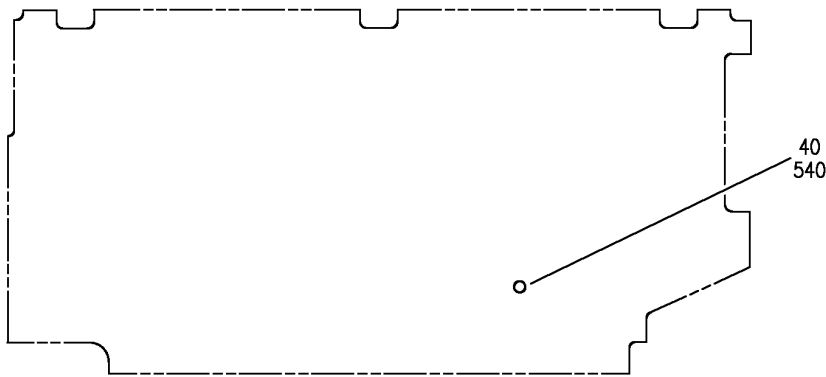
BOEING
 737-600/700/800/900
 PARTS CATALOG (MAINTENANCE)



(A)



(B)



(C)

E 23112101 SH1 2 REV 070

EQUIPMENT INSTL-E4-1 SHELF E/E BAY HF COMM
 FIGURE 1 (SHEET 2)

23-11-21-01

HAP
 OCT 15/08

23-11-21-01
 PAGE 0A

BOEING
737-600/700/800/900
PARTS CATALOG (MAINTENANCE)

FIG ITEM	PART NUMBER	1 2 3 4 5 6 7	NOMENCLATURE	EFFECT FROM TO	UNITS PER ASSY
1			EQUIPMENT INSTL-E4-1 SHELF E/E BAY HF COMM	201967	
- 1	284A0440-112		EQUIPMENT INSTL-E4-1 SHELF E/E BAY HF COMM NO. 1 FOR NHA SEE: 23-10-00-02	201967	RF
5	822-0330-001		.TRANSCEIVER- SUPPLIER CODE: V4V792 FUNCTIONAL DESCRIPTION: PROVIDES LONG RANGE TWO-WAY VOICE COMMUNICATION WITH GROUND STATIONS OR OTHER AIRPLANES. ELECTRICAL EQUIP NUMBER: M00226 COMPONENT MAINT MANUAL REF: 23-10-90 MAINTENANCE MANUAL REF: 23-11-21 QUALIFIED I/W DATA: 822-0330-001, 822-0990-001, 822-0990-002, 822-0990-003, AND 822-0990-004 ARE INTERCHANGEABLE AND INTERMIXABLE PROVIDED HF DATALINK FUNCTIONALITY IS NOT REQUIRED. 822-0330-001, 822-0990-002, 822-0990-003 AND 822-0990-004 ARE INTERCHANGEABLE AND INTERMIXABLE PROVIDED HF DATALINK FUNCTIONALITY IS NOT REQUIRED.	201967	1
15	646-7639-003		..CARD ASSY-CKT A1A1 SYNTHESIZER SUPPLIER CODE: V4V792	201967	RF
20	635-6090-001		...KNOB-PULL SUPPLIER CODE: V4V792	201967	1
- 25	MS51957-13		ATTACHING PARTS ...SCREW	201967	1

MISSING ITEM NUMBERS NOT APPLICABLE

- ITEM NOT ILLUSTRATED

HAP

23-11-21-01

23-11-21
FIG. 01
PAGE 1
JUN 15/09

BOEING
737-600/700/800/900
PARTS CATALOG (MAINTENANCE)

FIG ITEM	PART NUMBER	1 2 3 4 5 6 7	NOMENCLATURE	EFFECT FROM TO	UNITS PER ASSY
1					
- 30	302-4800-000		...WASHER-NONMETALLIC SUPPLIER CODE: V74921 -----*-----	201967	1
35	642-4453-001		..CARD ASSY-CKT A3 EXCITER SUPPLIER CODE: V4V792	201967	RF
40	635-6090-001		...KNOB-PULL SUPPLIER CODE: V4V792 ATTACHING PARTS	201967	1
- 45	MS51957-13		...SCREW	201967	1
- 50	310-6340-000		...WASHER-FLAT SUPPLIER CODE: V79807	201967	1
- 55	MS35338-135		...WASHER -----*-----	201967	1
- 702	286A0411-081		WIRE BUNDLE ASSY	202967	RF
- 703	286A0411-130		WIRE BUNDLE ASSY	201201	RF
710	BACC66H125C1001		.PLUG-HF-1 TRANSCEIVER ELECTRICAL EQUIP NUMBER: D00345 WIRING DIAGRAM REF: 231111	201967	1

MISSING ITEM NUMBERS NOT APPLICABLE

- ITEM NOT ILLUSTRATED

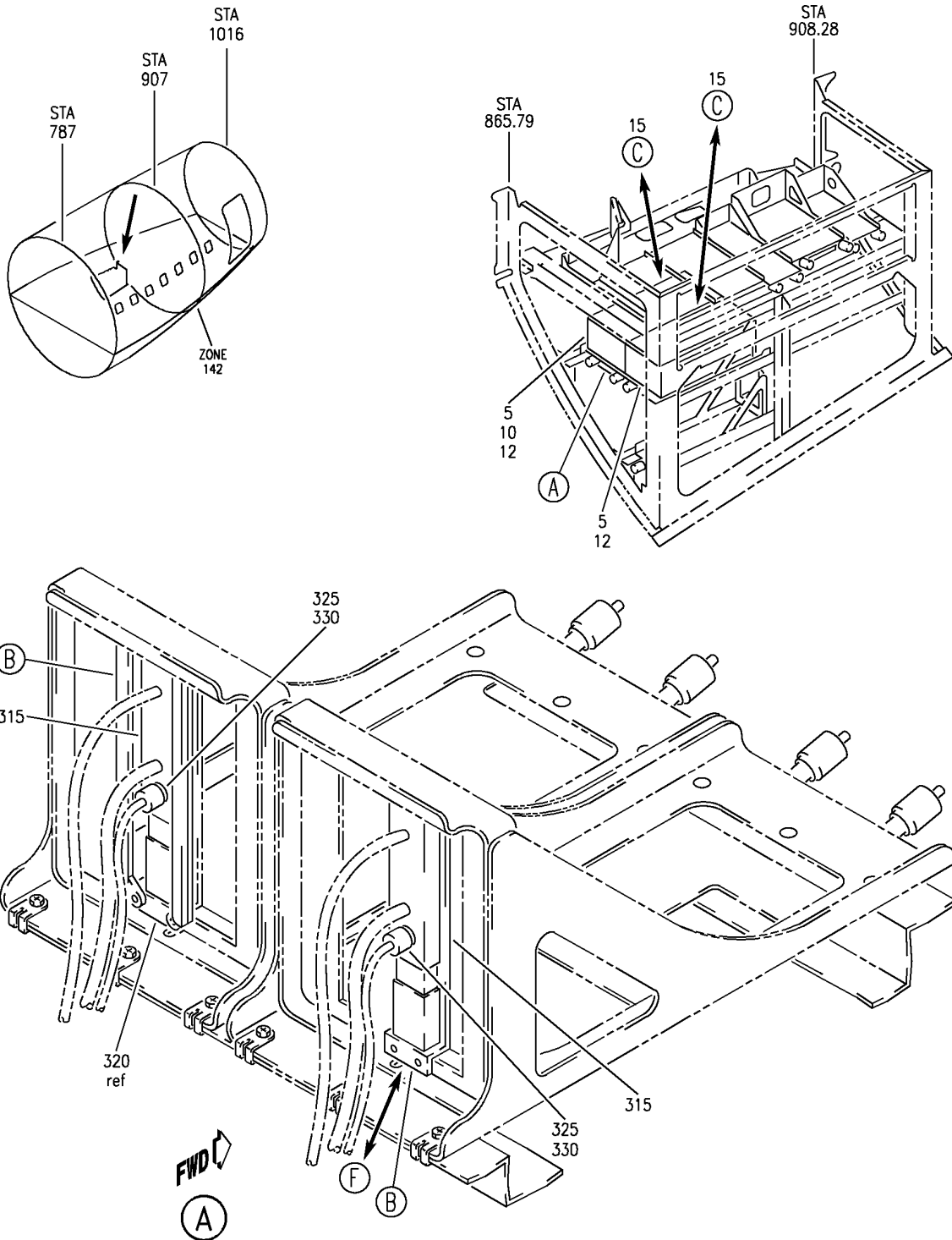
HAP

23-11-21-01

BOEING PROPRIETARY - Copyright © - Unpublished Work - See title page for details.

23-11-21
FIG. 01
PAGE 2
JUN 15/09

BOEING
 737-600/700/800/900
 PARTS CATALOG (MAINTENANCE)



E 23112110 SHT 1 REV 118

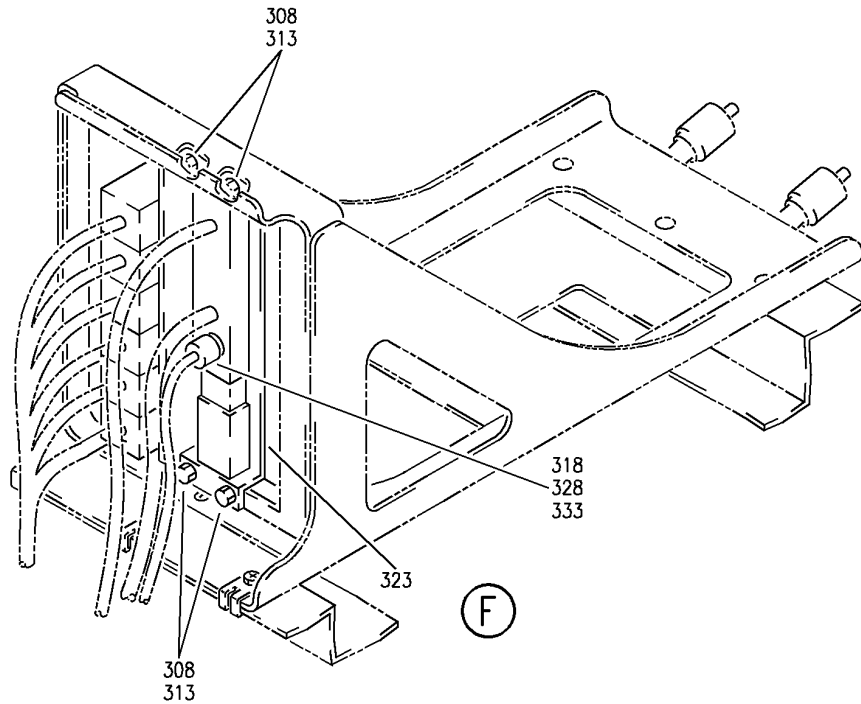
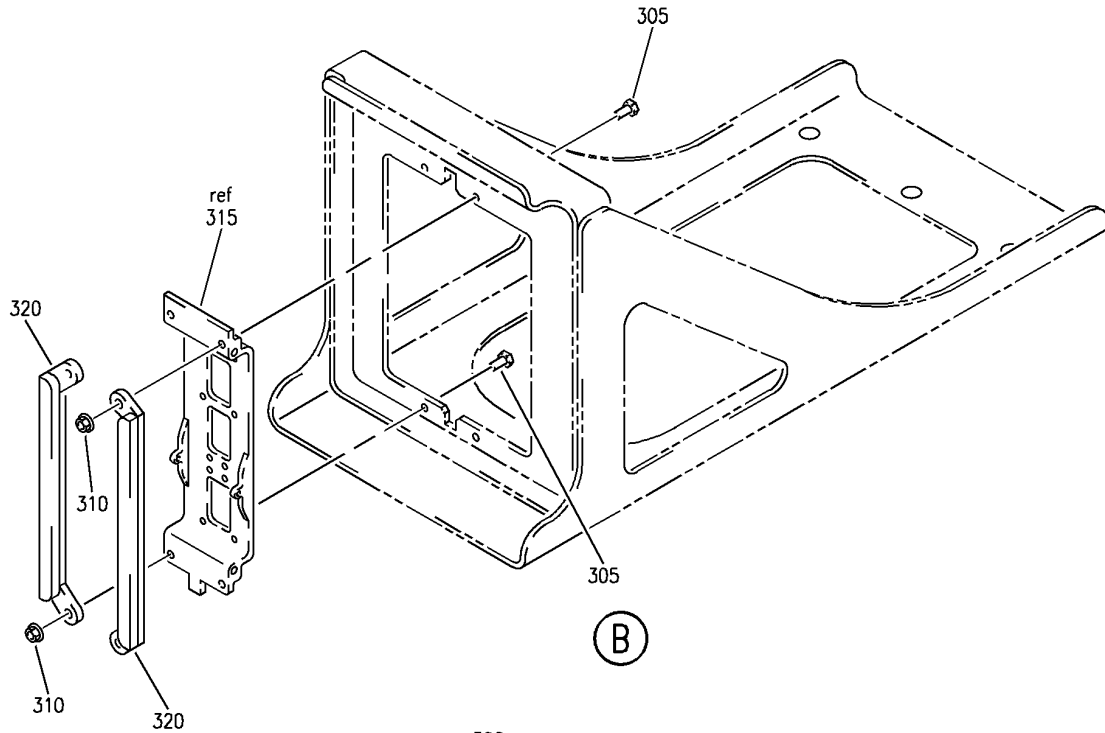
EQUIPMENT INSTL-E6 RACK
 FIGURE 10 (SHEET 1)

23-11-21-10

HAP
 FEB 15/08

23-11-21-10
 PAGE 0

BOEING
737-600/700/800/900
PARTS CATALOG (MAINTENANCE)



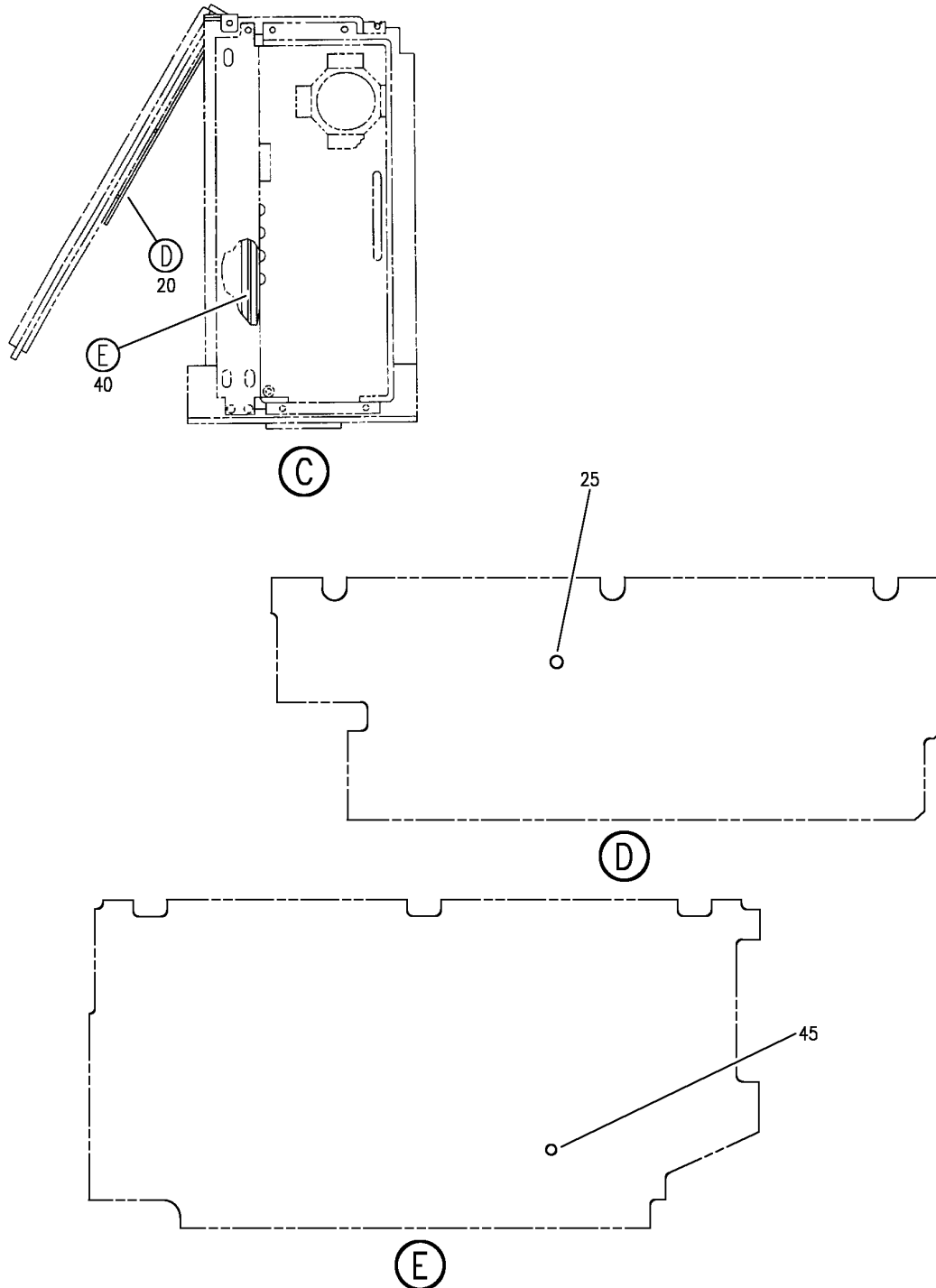
E 23112110 SHT 2 REV 104

EQUIPMENT INSTL-E6 RACK
FIGURE 10 (SHEET 2)

23-11-21-10

HAP
FEB 15/08

23-11-21-10
PAGE 0A



E 23112110 SHT 3 REV 070

EQUIPMENT INSTL-E6 RACK
FIGURE 10 (SHEET 3)

23-11-21-10

HAP
FEB 15/08

23-11-21-10
PAGE 0B

BOEING
737-600/700/800/900
PARTS CATALOG (MAINTENANCE)

FIG ITEM	PART NUMBER	1 2 3 4 5 6 7	NOMENCLATURE	EFFECT FROM TO	UNITS PER ASSY
10			EQUIPMENT INSTL-E6 RACK	031100	
305	NAS1801-06		.SCREW- POSITION DATA: FAR SIDE SIZE DETERMINED ON INSTL.	031100	8
310	PLH506CD		.NUT- SUPPLIER CODE: VF0224 SPECIFICATION NUMBER: BACN10YR06CD OPTIONAL PART: H52732-06CD V15653 POSITION DATA: NEAR SIDE	031100	8
315	BACC66H125C1001		.PLUG- ELECTRICAL EQUIP NUMBER: D00345 D00623 WIRING DIAGRAM REF: 231111 231121	031100	2
320	RBGP48-116N		.BACKSHELL-GND SUPPLIER CODE: V09922 SPECIFICATION NUMBER: S280W601-116 ELECTRICAL EQUIP NUMBER: D00623T D00345T WIRING DIAGRAM REF: 231121 231111	031100	2
325	349-1112-002		.CONTACT-COAX SUPPLIER CODE: V71468 SPECIFICATION NUMBER: BACC47EN4A ELECTRICAL EQUIP NUMBER: D00345BT D00623BT WIRING DIAGRAM REF: 231111 231121	031100	2

MISSING ITEM NUMBERS NOT APPLICABLE

— ITEM NOT ILLUSTRATED

HAP

23-11-21-10

BOEING PROPRIETARY - Copyright © - Unpublished Work - See title page for details.

23-11-21
FIG. 10
PAGE 1
FEB 15/09


BOEING
 737-600/700/800/900
PARTS CATALOG (MAINTENANCE)

FIG ITEM	PART NUMBER	1 2 3 4 5 6 7 NOMENCLATURE	EFFECT FROM TO	UNITS PER ASSY
10 330	125-95-9	.PLUG- SUPPLIER CODE: V91836 ELECTRICAL EQUIP NUMBER: D00345BU D00623BU WIRING DIAGRAM REF: 231111 231121	031100	2

MISSING ITEM NUMBERS NOT APPLICABLE

— ITEM NOT ILLUSTRATED

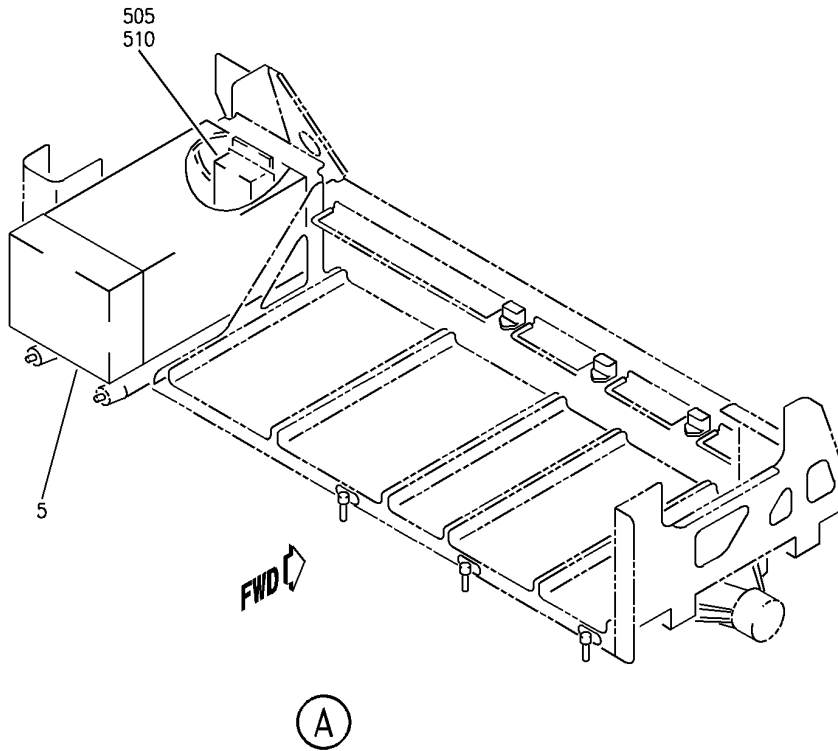
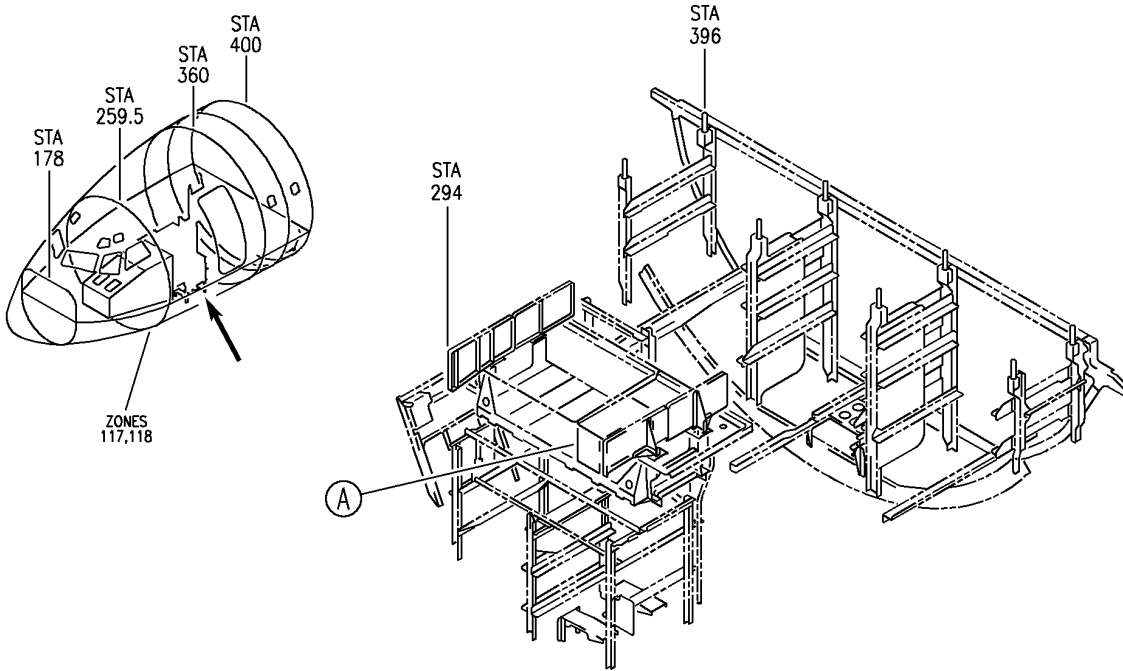
HAP

23-11-21-10

BOEING PROPRIETARY - Copyright © - Unpublished Work - See title page for details.

23-11-21
 FIG. 10
 PAGE 2
 FEB 15/08

BOEING
 737-600/700/800/900
 PARTS CATALOG (MAINTENANCE)



E 23112112 REV 125

EQUIPMENT INSTL-E/E BAY E8 RACK
 FIGURE 12

23-11-21-12

HAP
 FEB 10/07

23-11-21-12
 PAGE 0

BOEING
737-600/700/800/900
PARTS CATALOG (MAINTENANCE)

FIG ITEM	PART NUMBER	1 2 3 4 5 6 7	NOMENCLATURE	EFFECT FROM TO	UNITS PER ASSY
12			EQUIPMENT INSTL-E/E BAY E8 RACK	038038 041047 049100	
- 1	MODREF308730		EQUIPMENT INSTL-E/E BAY E8 RACK MODULE NUMBER: 284A0481-231104 REV A	038038 041047 049100	1
5	964-0452-011		.TRANSCEIVER-HF COMM SUPPLIER CODE: V97896 FUNCTIONAL DESCRIPTION: PROVIDES LONG RANGE TWO-WAY VOICE COMMUNICATION WITH GROUND STATIONS OR OTHER AIRPLANES. ELECTRICAL EQUIP NUMBER: M00226 COMPONENT MAINT MANUAL REF: 23-12-01 MAINTENANCE MANUAL REF: 23-11-21	038038 041047 049100	1
5	964-0452-012		.TRANSCEIVER-HF COMM SUPPLIER CODE: V97896 ELECTRICAL EQUIP NUMBER: M00226 COMPONENT MAINT MANUAL REF: 23-12-01 MAINTENANCE MANUAL REF: 23-11-21	038038 041047 049100	1
- 500	286A0811-059		WIRE BUNDLE ASSY	038038 041045 054100	RF
505	BACC66H125C1001		.PLUG- ELECTRICAL EQUIP NUMBER: D00345 WIRING DIAGRAM REF: 231111	038038 041045 054100	1
510	RBGP48-116N		.BACKSHELL- SUPPLIER CODE: V09922 SPECIFICATION NUMBER: S280W601-116 ELECTRICAL EQUIP NUMBER: D00345T WIRING DIAGRAM REF: 231111	038038 041045 054100	1

MISSING ITEM NUMBERS NOT APPLICABLE

- ITEM NOT ILLUSTRATED

HAP

23-11-21-12

23-11-21
FIG. 12
PAGE 1
FEB 15/09

BOEING
737-600/700/800/900
PARTS CATALOG (MAINTENANCE)

FIG ITEM	PART NUMBER	1 2 3 4 5 6 7	NOMENCLATURE	EFFECT FROM TO	UNITS PER ASSY
12			ATTACHING PARTS		
- 515	NAS1801-06		.SCREW-	038038	4
			SIZE DETERMINED ON INSTL.	041045	
				054100	
- 520	PLH506CD		.NUT	038038	4
			SUPPLIER CODE:	041045	
			VF0224	054100	
			SPECIFICATION NUMBER:		
			BACN10YRO6CD		
			OPTIONAL PART:		
			H52732-06CD		
			V15653		
			-----*-----		

MISSING ITEM NUMBERS NOT APPLICABLE

- ITEM NOT ILLUSTRATED

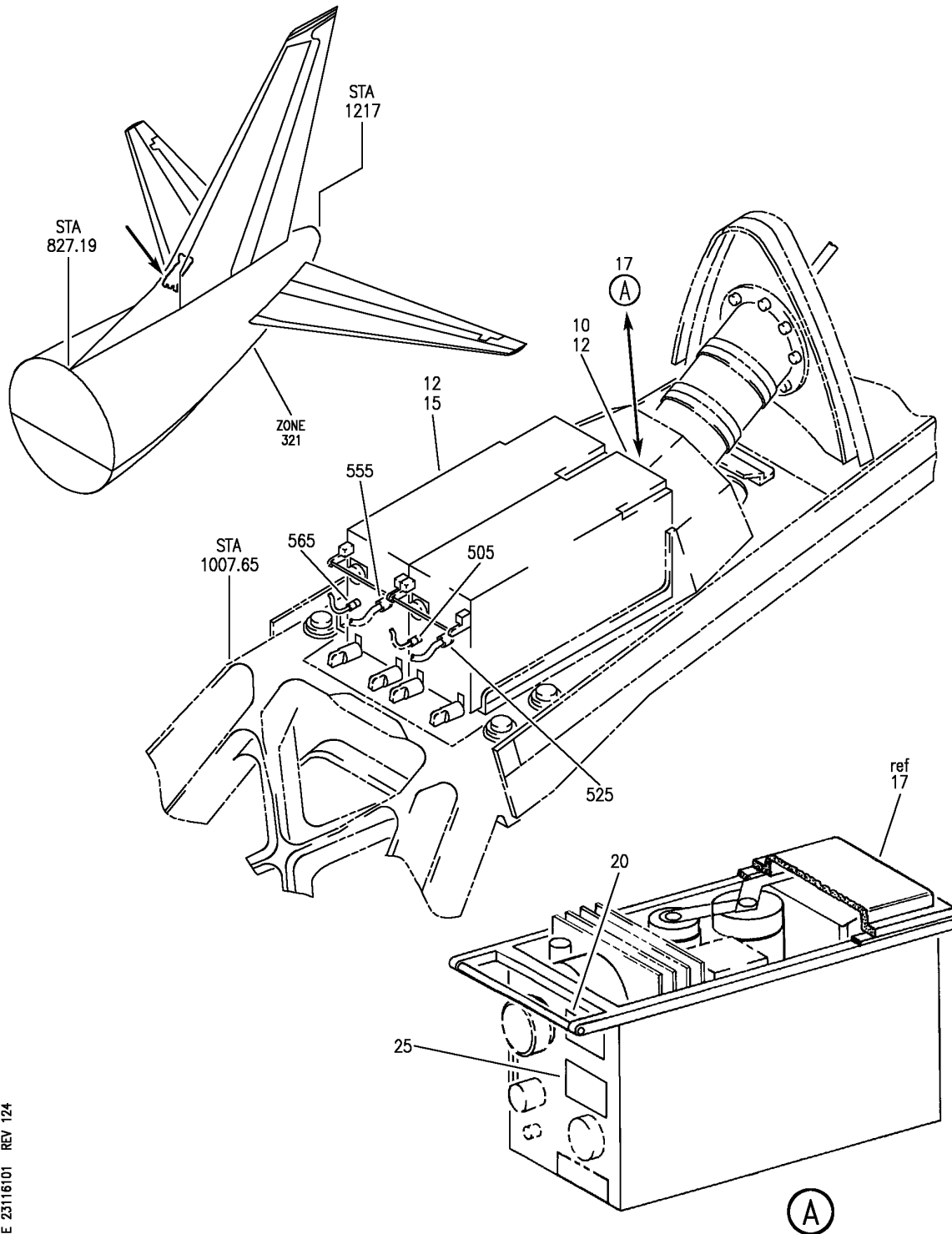
HAP

23-11-21-12

BOEING PROPRIETARY - Copyright © - Unpublished Work - See title page for details.

23-11-21
FIG. 12
PAGE 2
FEB 15/09

BOEING
737-600/700/800/900
PARTS CATALOG (MAINTENANCE)



E 23116101 REV 124

COUPLER INSTL-HF FLUSH ANT.
FIGURE 1

23-11-61-01

HAP
FEB 10/07

23-11-61-01
PAGE 0

BOEING
737-600/700/800/900
PARTS CATALOG (MAINTENANCE)

FIG ITEM	PART NUMBER	1 2 3 4 5 6 7	NOMENCLATURE	EFFECT FROM TO	UNITS PER ASSY
R R R R	1		COUPLER INSTL-HF FLUSH ANT.	038038 041047 049100 201967	
	- 1	284A0519-3	COUPLER INSTL-HF FLUSH ANT. ROCKWELL DIGITAL SINGLE SYS FOR NHA SEE: 23-10-00-02	201967	RF
	- 2	MODREF298605	COUPLER INSTL-HF FLUSH ANT. ALLIED SIGNAL DIGITAL SINGLE SYS MODULE NUMBER: 284A0519-8 REV B	038038 041047 049100	1
	10	822-0987-004	.COUPLER-HF ANTENNA STATIC SENSITIVE PART (CUSTOMER FURNISHED) SUPPLIER CODE: V4V792 FUNCTIONAL DESCRIPTION: AUTOMATICALLY TUNES THE IMPEDANCE OF THE HF RADIO TRANSMISSION COAX TO MATCH THE HF ANTENNA IMPEDANCE WITHIN THE OPERATING FREQUENCY BAND. ELECTRICAL EQUIP NUMBER: M00227 COMPONENT MAINT MANUAL REF: 23-11-92 MAINTENANCE MANUAL REF: 23-11-61	201967	1

MISSING ITEM NUMBERS NOT APPLICABLE

- ITEM NOT ILLUSTRATED

HAP

23-11-61-01

BOEING PROPRIETARY - Copyright © - Unpublished Work - See title page for details.

23-11-61
FIG. 01
PAGE 1
JUN 15/09

BOEING
737-600/700/800/900
PARTS CATALOG (MAINTENANCE)

FIG ITEM	PART NUMBER	1 2 3 4 5 6 7	NOMENCLATURE	EFFECT FROM TO	UNITS PER ASSY
1 10	964-0453-011		. COUPLER-HF ANTENNA STATIC SENSITIVE PART SUPPLIER CODE: V97896 FUNCTIONAL DESCRIPTION: AUTOMATICALLY TUNES THE IMPEDANCE OF THE HF RADIO TRANSMISSION COAX TO MATCH THE HF ANTENNA IMPEDANCE WITHIN THE OPERATING FREQUENCY BAND ELECTRICAL EQUIP NUMBER: M00227 COMPONENT MAINT MANUAL REF: 23-11-01 MAINTENANCE MANUAL REF: 23-11-61 POST RAPID REVISION: RR97177-2R-B RR97123-13B	038038 041047 049100	1
10	822-0987-002		. COUPLER-HF ANTENNA (CUSTOMER FURNISHED) STATIC SENSITIVE PART SUPPLIER CODE: V4V792 FUNCTIONAL DESCRIPTION: AUTOMATICALLY TUNES THE IMPEDANCE OF THE HF RADIO TRANSMISSION COAX TO MATCH THE HF ANTENNA IMPEDANCE WITHIN THE OPERATING FREQUENCY BAND. ELECTRICAL EQUIP NUMBER: M00227 COMPONENT MAINT MANUAL REF: 23-11-92 MAINTENANCE MANUAL REF: 23-11-61	201967	1

MISSING ITEM NUMBERS NOT APPLICABLE

— ITEM NOT ILLUSTRATED

HAP

23-11-61-01

BOEING PROPRIETARY - Copyright © - Unpublished Work - See title page for details.

23-11-61
FIG. 01
PAGE 2
JUN 15/09

BOEING
737-600/700/800/900
PARTS CATALOG (MAINTENANCE)

FIG ITEM	PART NUMBER	1 2 3 4 5 6 7	NOMENCLATURE	EFFECT FROM TO	UNITS PER ASSY
1					
10	822-0987-003		. COUPLER-HF ANTENNA STATIC SENSITIVE PART SUPPLIER CODE: V4V792 FUNCTIONAL DESCRIPTION: AUTOMATICALLY TUNES THE IMPEDANCE OF THE HF RADIO TRANSMISSION COAX TO MATCH THE HF ANTENNA IMPEDANCE WITHIN THE OPERATING FREQUENCY BAND ELECTRICAL EQUIP NUMBER: M0027 COMPONENT MAINT MANUAL REF: 23-11-92 MAINTENANCE MANUAL REF: 23-11-61	038038 042045 054100	1
10	822-0987-004		. COUPLER-HF ANTENNA STATIC SENSITIVE PART SUPPLIER CODE: V4V792 FUNCTIONAL DESCRIPTION: AUTOMATICALLY TUNES THE IMPEDANCE OF THE HF RADIO TRANSMISSION COAX TO MATCH THE HF ANTENNA IMPEDANCE WITHIN THE OPERATING FREQUENCY BAND. ELECTRICAL EQUIP NUMBER: M0027 COMPONENT MAINT MANUAL REF: 23-11-92 MAINTENANCE MANUAL REF: 23-11-61 USED ON: MODREF254899 MODREF284969	038038 042045 054100	1
- 500	286A7761-001		WIRE BUNDLE ASSY	201967	RF
- 500	286A7761-044		WIRE BUNDLE ASSY-	038038 041047 054100	RF

R
R
R
R
R
R
R
R
R
R
R
R
R
R
R
R
R
R
R
R
R
R

MISSING ITEM NUMBERS NOT APPLICABLE

- ITEM NOT ILLUSTRATED

HAP

23-11-61-01

BOEING PROPRIETARY - Copyright © - Unpublished Work - See title page for details.

23-11-61
FIG. 01
PAGE 3
JUN 15/09

BOEING
737-600/700/800/900
PARTS CATALOG (MAINTENANCE)

FIG ITEM	PART NUMBER	1 2 3 4 5 6 7	NOMENCLATURE	EFFECT FROM TO	UNITS PER ASSY
1 505	1205-62-9		.PLUG-COAX SUPPLIER CODE: V91836 ELECTRICAL EQUIP NUMBER: D00337 WIRING DIAGRAM REF: 231111	038038 041047 054100 201967	1
- 520	286A7057-004		WIRE BUNDLE ASSY	201967	RF
- 520	286A7057-058		WIRE BUNDLE ASSY-	038038 041047 054100	RF
525	MS3126E16-26S		.PLUG-HF-1 COUPLER ELECTRICAL EQUIP NUMBER: D00341 WIRING DIAGRAM REF: 231111	038038 041047 054100 201967	1
- 550	286A7061-002		WIRE BUNDLE ASSY	201967	RF
- 550	286A7061-043		WIRE BUNDLE ASSY-	038038 041047 054100	RF
555	MS3126E16-26S		.PLUG-HF-1 COUPLER ELECTRICAL EQUIP NUMBER: D00629 WIRING DIAGRAM REF: 231121	038038 041047 054100 201967	1
- 560	286A7763-044		WIRE BUNDLE ASSY-	038038 041047 054100	RF
- 560	286A7763-001		WIRE BUNDLE ASSY	201967	RF
565	1205-62-9		.PLUG-COAX SUPPLIER CODE: V91836 ELECTRICAL EQUIP NUMBER: D00625 WIRING DIAGRAM REF: 231121	038038 041047 054100 201967	1

MISSING ITEM NUMBERS NOT APPLICABLE

- ITEM NOT ILLUSTRATED

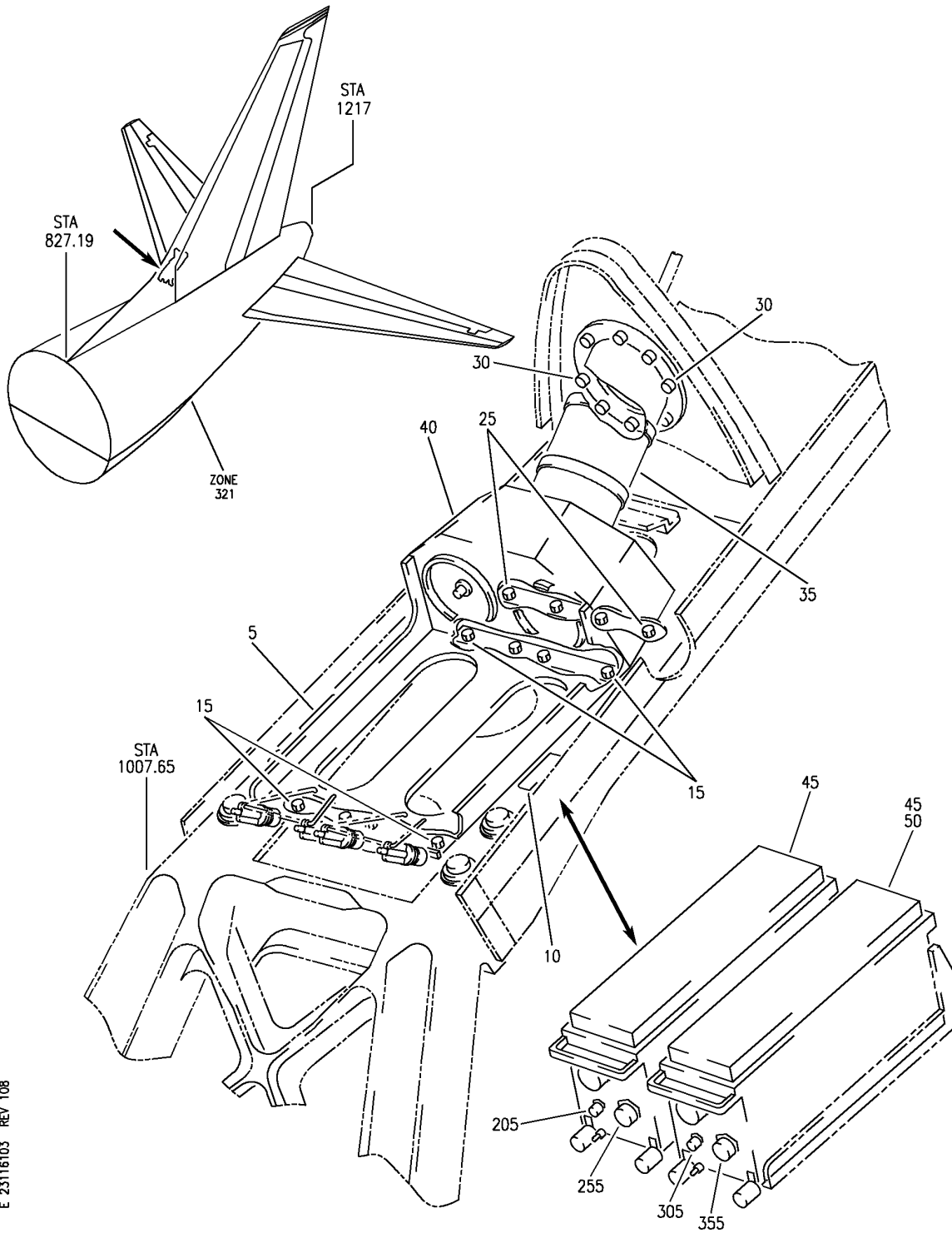
HAP

23-11-61-01

BOEING PROPRIETARY - Copyright © - Unpublished Work - See title page for details.

23-11-61
FIG. 01
PAGE 4
JUN 15/09

BOEING
 737-600/700/800/900
 PARTS CATALOG (MAINTENANCE)



E 23116103 REV 108

COUPLER INSTL-DUAL TRAY AND FEEDLINE, HF FLUSH ANT.
 FIGURE 3

23-11-61-03

HAP
 OCT 10/06

23-11-61-03
 PAGE 0

BOEING
737-600/700/800/900
PARTS CATALOG (MAINTENANCE)

FIG ITEM	PART NUMBER	1 2 3 4 5 6 7	NOMENCLATURE	EFFECT FROM TO	UNITS PER ASSY
3			COUPLER INSTL-DUAL TRAY AND FEEDLINE, HF FLUSH ANT.	001007 037999	
- 1	284A0519-1		COUPLER INSTL-DUAL TRAY AND FEEDLINE, HF FLUSH ANT. FOR NHA SEE: 23-10-00-02	201967	RF
- 1	284A0519-7		COUPLER INSTL-DUAL TRAY AND FEEDLINE, HF FLUSH ANT. FOR NHA SEE: 23-10-00-03	001007	RF
- 1	MODREF258310		COUPLER INSTL-DUAL TRAY AND FEEDLINE, HF FLUSH ANT. MODULE NUMBER: 284A0519-7 REV B	037200 968999	1
5	BAC27DEX3623		.MARKER-ALUMINUM FOIL PLACARD CONTENT: M440 ANT COUPLER HF 2	001007 037999	1
10	BAC27DEX3622		.MARKER-ALUMINUM FOIL PLACARD CONTENT: M227 ANT COUPLER HF 1	001007 037999	1
15	NAS1801-3-12		.SCREW	001007 037999	8
25	NAS1801-3-8		.SCREW	001007 037999	4
30	NAS1801-08-8		.SCREW	001007 037999	8
35	830-6069-001		.FEEDLINE ASSY- SUPPLIER CODE: V4V792 ELECTRICAL EQUIP NUMBER: M00889	001007 037999	1
40	822-1126-001		.TRAY ASSY-COUPLER SUPPLIER CODE: V4V792 ELECTRICAL EQUIP NUMBER: M00888 COMPONENT MAINT MANUAL REF: 23-11-92	001007 037999	1

MISSING ITEM NUMBERS NOT APPLICABLE

- ITEM NOT ILLUSTRATED

HAP

23-11-61-03

BOEING PROPRIETARY - Copyright © - Unpublished Work - See title page for details.

23-11-61
FIG. 03
PAGE 1
OCT 15/08

BOEING
737-600/700/800/900
PARTS CATALOG (MAINTENANCE)

FIG ITEM	PART NUMBER	1 2 3 4 5 6 7	NOMENCLATURE	EFFECT FROM TO	UNITS PER ASSY
3					
50	822-0987-004		.COUPLER-HF ANTENNA STATIC SENSITIVE PART SUPPLIER CODE: V4V792 FUNCTIONAL DESCRIPTION: AUTOMATICALLY TUNES THE IMPEDANCE OF THE HF RADIO TRANSMISSION COAX TO MATCH THE HF ANTENNA IMPEDANCE WITHIN THE OPERATING FREQUENCY BAND. ELECTRICAL EQUIP NUMBER: M00227 COMPONENT MAINT MANUAL REF: 23-11-92 MAINTENANCE MANUAL REF: 23-11-61	037200 968999	1
- 200	286A7763-001		WIRE BUNDLE ASSY-	201967	RF
- 200	286A7763-044		WIRE BUNDLE ASSY	037047 054106 968999	RF
205	1205-62-9		.PLUG-COAX SUPPLIER CODE: V91836 ELECTRICAL EQUIP NUMBER: D00625 WIRING DIAGRAM REF: 231121	037047 054106 201999	1
- 250	286A7061-002		WIRE BUNDLE ASSY-	201967	RF
- 250	286A7061-043		WIRE BUNDLE ASSY	037047 054106 968999	RF
255	MS3126E16-26S		.PLUG-HF-1 COUPLER ELECTRICAL EQUIP NUMBER: D00629 WIRING DIAGRAM REF: 231121	037047 054106 201999	1
- 300	286A7761-001		WIRE BUNDLE ASSY-	001007 201967	RF
- 300	286A7761-044		WIRE BUNDLE ASSY	037047 054106 968999	RF

MISSING ITEM NUMBERS NOT APPLICABLE

- ITEM NOT ILLUSTRATED

HAP

23-11-61-03

23-11-61
FIG. 03
PAGE 2
FEB 15/09

BOEING
737-600/700/800/900
PARTS CATALOG (MAINTENANCE)

FIG ITEM	PART NUMBER	1 2 3 4 5 6 7	NOMENCLATURE	EFFECT FROM TO	UNITS PER ASSY
3 305	1205-62-9		.PLUG-COAX SUPPLIER CODE: V91836 ELECTRICAL EQUIP NUMBER: D00337 WIRING DIAGRAM REF: 231111	001007 037047 054106 201999	1
- 350	286A7057-004		WIRE BUNDLE ASSY-	201967	RF
- 350	286A7057-058		WIRE BUNDLE ASSY	037047 054106 968999	RF
- 350	286A7057-001		WIRE BUNDLE ASSY	001007	RF
355	MS3126E16-26S		.PLUG-HF-1 COUPLER ELECTRICAL EQUIP NUMBER: D00341 WIRING DIAGRAM REF: 231111	001007 037047 054106 201999	1

MISSING ITEM NUMBERS NOT APPLICABLE

- ITEM NOT ILLUSTRATED

HAP

23-11-61-03

BOEING PROPRIETARY - Copyright © - Unpublished Work - See title page for details.

23-11-61
FIG. 03
PAGE 3
FEB 15/09