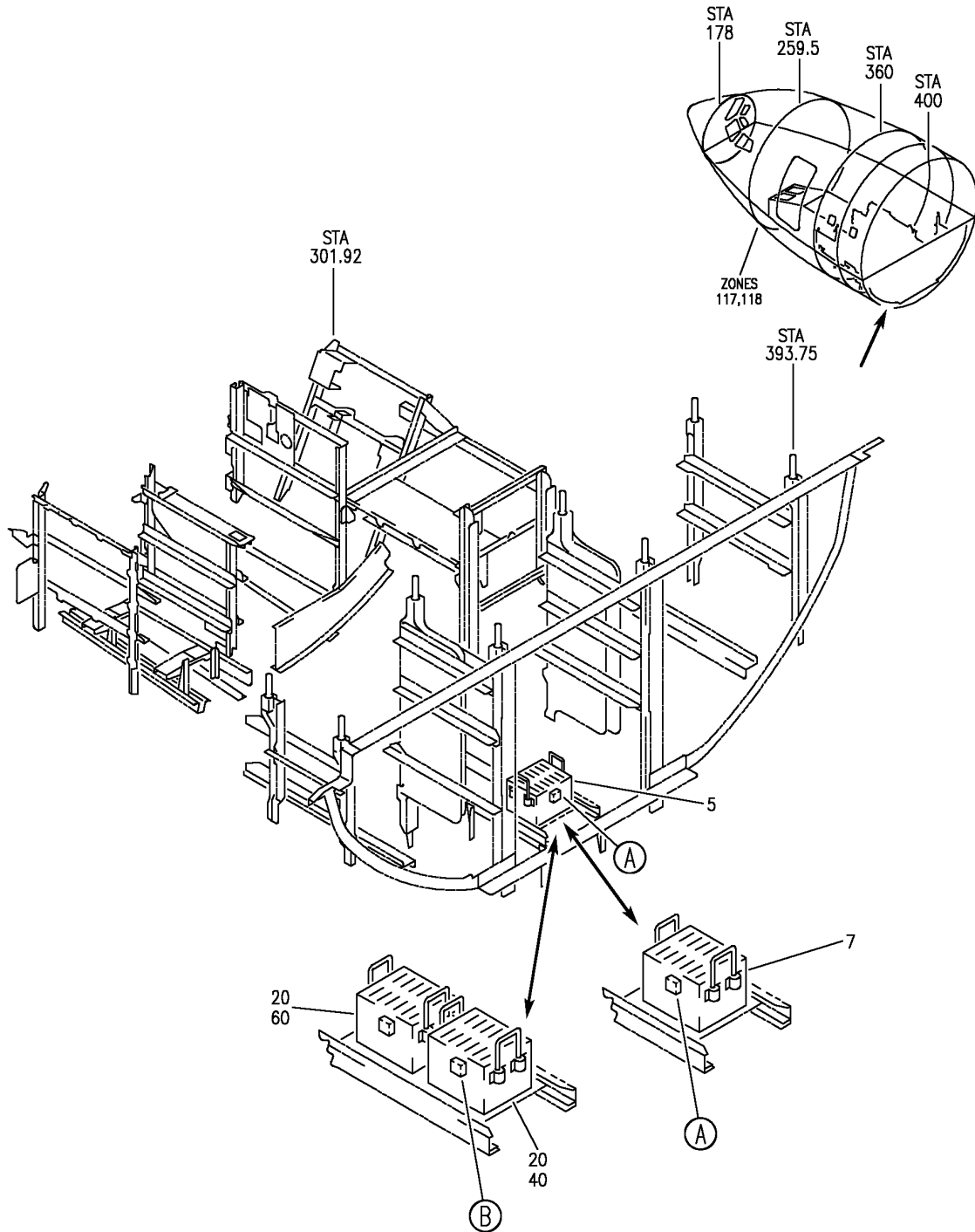


DC GENERATION SYSTEM

HAP
OCT 10/06

24-31-00
SECTION TITLE
PAGE 1

BOEING
 737-600/700/800/900
 PARTS CATALOG (MAINTENANCE)



E 24311101 SHT 1 REV 144

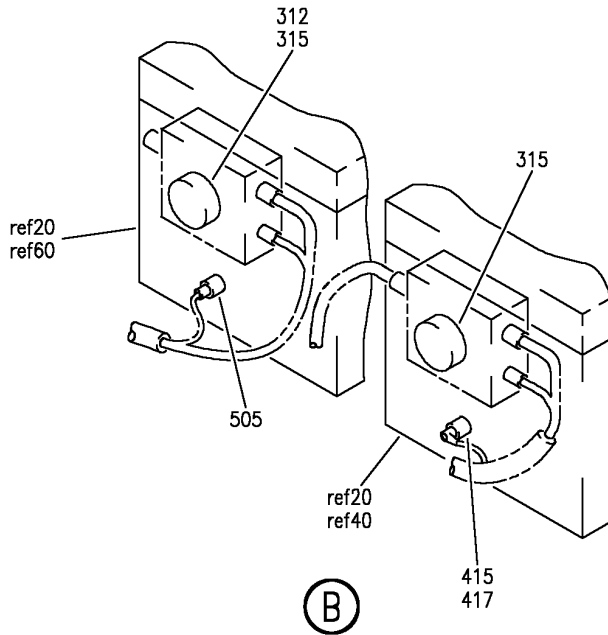
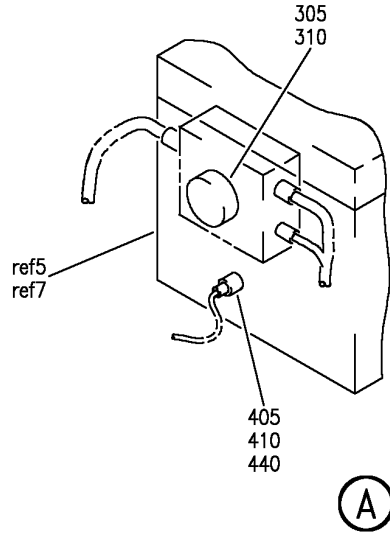
EQUIPMENT INSTL-E/E COMPT MAIN BATTERY (BATTERY ONLY)
 FIGURE 1 (SHEET 1)

24-31-11-01

HAP
 OCT 15/08

24-31-11-01
 PAGE 0

BOEING
 737-600/700/800/900
 PARTS CATALOG (MAINTENANCE)



E 24311101 SH1 2 REV 144

EQUIPMENT INSTL-E/E COMPT MAIN BATTERY (BATTERY ONLY)
 FIGURE 1 (SHEET 2)

24-31-11-01

HAP
 OCT 15/08

24-31-11-01
 PAGE 0A

BOEING
737-600/700/800/900
PARTS CATALOG (MAINTENANCE)

FIG ITEM	PART NUMBER	1 2 3 4 5 6 7	NOMENCLATURE	EFFECT FROM TO	UNITS PER ASSY
1			EQUIPMENT INSTL-E/E COMPT MAIN BATTERY (BATTERY ONLY)	001030 201967	
- 1	284A0816-4		EQUIPMENT INSTL-E/E COMPT MAIN BATTERY (BATTERY ONLY)	001030 201967	RF
20	BA35-01		FOR NHA/OTHER SYS DET SEE: 24-30-00-02 24-30-00-03 .BATTERY- SUPPLIER CODE: V08748 FUNCTIONAL DESCRIPTION: PROVIDES 24 VOLTS DC FOR USE BY THE STANDBY POWER AND APU START SYSTEM SPECIFICATION NUMBER: S282T003-1 ELECTRICAL EQUIP NUMBER: M00006 M03054 COMPONENT MAINT MANUAL REF: 24-31-07 MAINTENANCE MANUAL REF: 24-31-11 OPTIONAL PART: 024147-000 V09052	001030 201967	2
20	024147-000		.BATTERY- SUPPLIER CODE: V09052 FUNCTIONAL DESCRIPTION: PROVIDES 24 VOLTS DC FOR USE BY THE STANDBY POWER AND APU START SYSTEM SPECIFICATION NUMBER: S282T003-1 ELECTRICAL EQUIP NUMBER: M00006 M03054 COMPONENT MAINT MANUAL REF: 24-31-07 MAINTENANCE MANUAL REF: 24-31-11 OPTIONAL PART: BA35-01 V08748	001030 201967	2

MISSING ITEM NUMBERS NOT APPLICABLE

- ITEM NOT ILLUSTRATED

HAP

24-31-11-01

BOEING PROPRIETARY - Copyright © - Unpublished Work - See title page for details.

24-31-11
FIG. 01
PAGE 1
OCT 15/08

BOEING
737-600/700/800/900
PARTS CATALOG (MAINTENANCE)

FIG ITEM	PART NUMBER	1 2 3 4 5 6 7	NOMENCLATURE	EFFECT FROM TO	UNITS PER ASSY
1			ATTACHING PARTS		
- 25	BACB30NM3K4		.BOLT-	001030 201967	12
- 30	AN970-3		.WASHER-	001030 201967	12
			-----*-----		
- 300	286A2532-011		WIRE BUNDLE ASSY-	012027	RF
- 300	286A2532-002		WIRE BUNDLE ASSY-	001001 006007	RF
- 300	286A2532-006		WIRE BUNDLE ASSY	002005	RF
- 300	286A2532-010		WIRE BUNDLE ASSY	008011 201967	RF
- 300	286A2532-014		WIRE BUNDLE ASSY-	028030	RF
315	MS25182-2		.PLUG-	001030 201967	2
			ELECTRICAL EQUIP NUMBER:		
			D00044		
			D10328		
			WIRING DIAGRAM REF:		
			494111		
			243112		
- 400	286A6210-004		WIRE BUNDLE ASSY	001007	RF
- 400	286A6210-009		WIRE BUNDLE ASSY-	008011 201967	RF
- 400	286A6210-014		WIRE BUNDLE ASSY-	012030	RF
415	BACC45FT12-12P		.CONNECTOR-	001030 201967	1
			ELECTRICAL EQUIP NUMBER:		
			D02936		
			WIRING DIAGRAM REF:		
			243111		
- 500	286A5110-014		WIRE BUNDLE ASSY-	012030	RF
- 500	286A5110-015		WIRE BUNDLE ASSY	008011	RF
- 500	286A5110-016		WIRE BUNDLE ASSY	201967	RF
- 500	286A5110-302		WIRE BUNDLE ASSY	001007	RF
505	BACC45FT12-12P		.PLUG-	001030 201967	1
			ELECTRICAL EQUIP NUMBER:		
			D10330		
			WIRING DIAGRAM REF:		
			243112		

MISSING ITEM NUMBERS NOT APPLICABLE

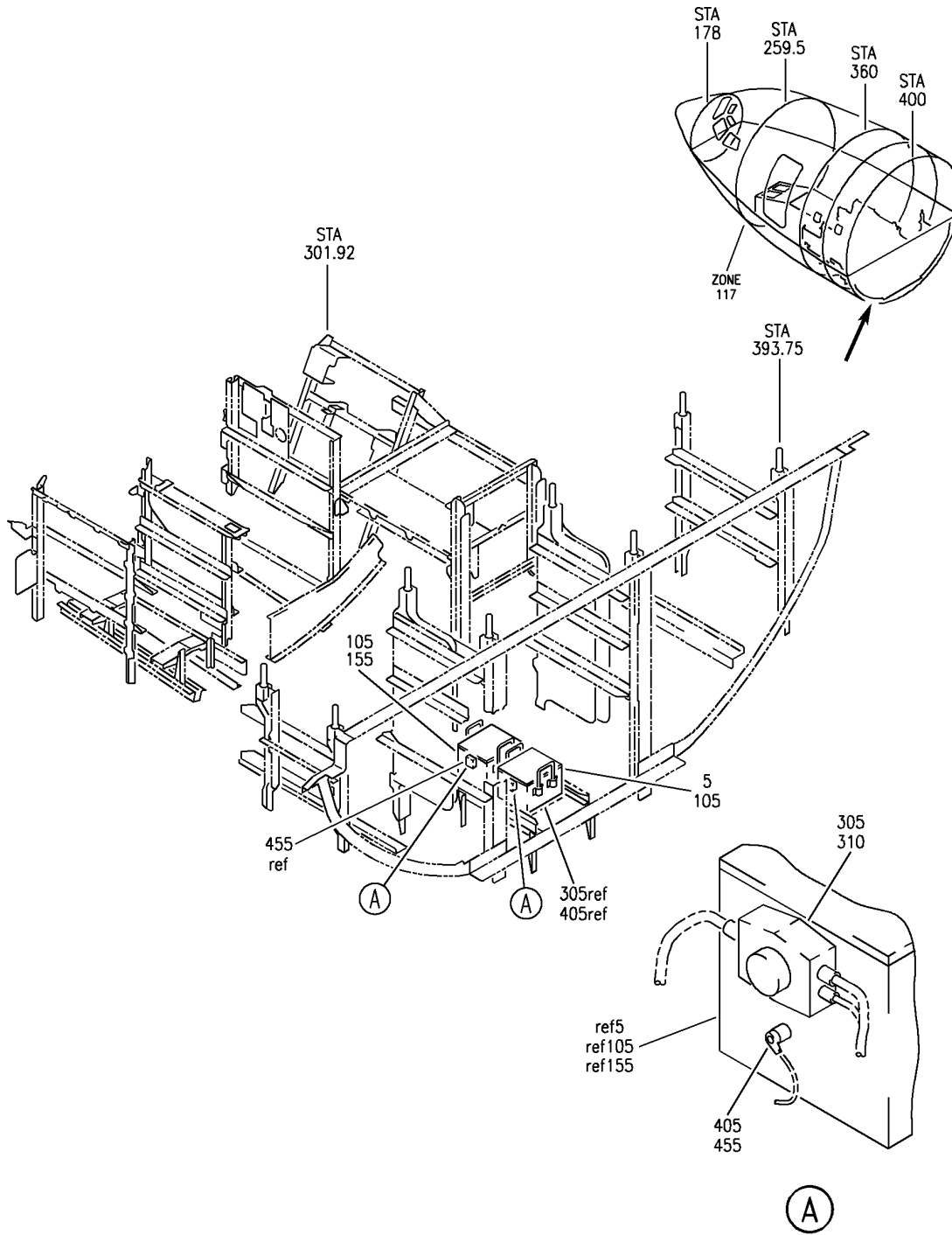
- ITEM NOT ILLUSTRATED

HAP

24-31-11-01

24-31-11
FIG. 01
PAGE 2
OCT 15/08

BOEING
 737-600/700/800/900
 PARTS CATALOG (MAINTENANCE)



E 24311102 REV 118

EQUIPMENT INSTL-E/E COMPT MAIN BATTERY (ELECTRICAL POWER ONLY)
 FIGURE 2

24-31-11-02

HAP
 OCT 10/06

24-31-11-02
 PAGE 0

BOEING
737-600/700/800/900
PARTS CATALOG (MAINTENANCE)

FIG ITEM	PART NUMBER	1 2 3 4 5 6 7	NOMENCLATURE	EFFECT FROM TO	UNITS PER ASSY
2			EQUIPMENT INSTL-E/E COMPT MAIN BATTERY (ELECTRICAL POWER ONLY)	031200 968999	
- 100	MODREF268716		EQUIPMENT INSTL-E/E COMPT MAIN BATTERY (ELECTRICAL POWER ONLY)	031200 968999	1
105	BA35-01		MODULE NUMBER: 284A0816-8 REV A FOR OTHER SYS DETAILS SEE: 25-50-51-02A .BATTERY- SUPPLIER CODE: V08748 FUNCTIONAL DESCRIPTION: PROVIDES 24 VOLTS DC FOR USE BY THE STANDBY POWER AND APU START SYSTEM SPECIFICATION NUMBER: S282T003-1 ELECTRICAL EQUIP NUMBER: M00006 M03054 COMPONENT MAINT MANUAL REF: 24-31-07 OPTIONAL PART: 024147-000 V09052 OPTIONAL PART: 024147-000 V09052	031200 968999	2

MISSING ITEM NUMBERS NOT APPLICABLE

- ITEM NOT ILLUSTRATED

HAP

24-31-11-02

BOEING PROPRIETARY - Copyright © - Unpublished Work - See title page for details.

24-31-11
FIG. 02
PAGE 1
OCT 15/08

BOEING
737-600/700/800/900
PARTS CATALOG (MAINTENANCE)

FIG ITEM	PART NUMBER	1 2 3 4 5 6 7	NOMENCLATURE	EFFECT FROM TO	UNITS PER ASSY
2 105	024147-000		.BATTERY- SUPPLIER CODE: V09052 FUNCTIONAL DESCRIPTION: PROVIDES 24 VOLTS DC FOR USE BY THE STANDBY POWER AND APU START SYSTEM SPECIFICATION NUMBER: S282T003-1 ELECTRICAL EQUIP NUMBER: M00006 M03054 COMPONENT MAINT MANUAL REF: 24-31-07 OPTIONAL PART: BA35-01 V08748 OPTIONAL PART: BA35-01 V08748 ATTACHING PARTS	031200 968999	2
- 110	BACB30NM3K4		.BOLT	031200 968999	12
- 115	AN970-3		.WASHER	031200 968999	12
- 300	286A2532-021		-----*----- WIRE BUNDLE ASSY	031046 054105 968999	RF
310	MS25182-2		.PLUG- ELECTRICAL EQUIP NUMBER: D00044 D10328 WIRING DIAGRAM REF: 243111 243112	031046 054105 968999	2
- 400	286A6210-023		WIRE BUNDLE ASSY	031036	RF
- 400	286A6210-027		WIRE BUNDLE ASSY	037046 054105 968999	RF
405	BACC45FT12-12P		.PLUG- ELECTRICAL EQUIP NUMBER: D02936 WIRING DIAGRAM REF: 243111	031046 054105 968999	1
- 450	286A5110-023		WIRE BUNDLE ASSY	031046 054105 968999	RF

MISSING ITEM NUMBERS NOT APPLICABLE

- ITEM NOT ILLUSTRATED

HAP

24-31-11-02

BOEING PROPRIETARY - Copyright © - Unpublished Work - See title page for details.

24-31-11
FIG. 02
PAGE 2
FEB 15/09


BOEING
 737-600/700/800/900
PARTS CATALOG (MAINTENANCE)

FIG ITEM	PART NUMBER	1 2 3 4 5 6 7 NOMENCLATURE	EFFECT FROM TO	UNITS PER ASSY
2 455	BACC45FT12-12P	.PLUG- ELECTRICAL EQUIP NUMBER: D10330 WIRING DIAGRAM REF: 243112	031046 054105 968999	1

MISSING ITEM NUMBERS NOT APPLICABLE

— ITEM NOT ILLUSTRATED

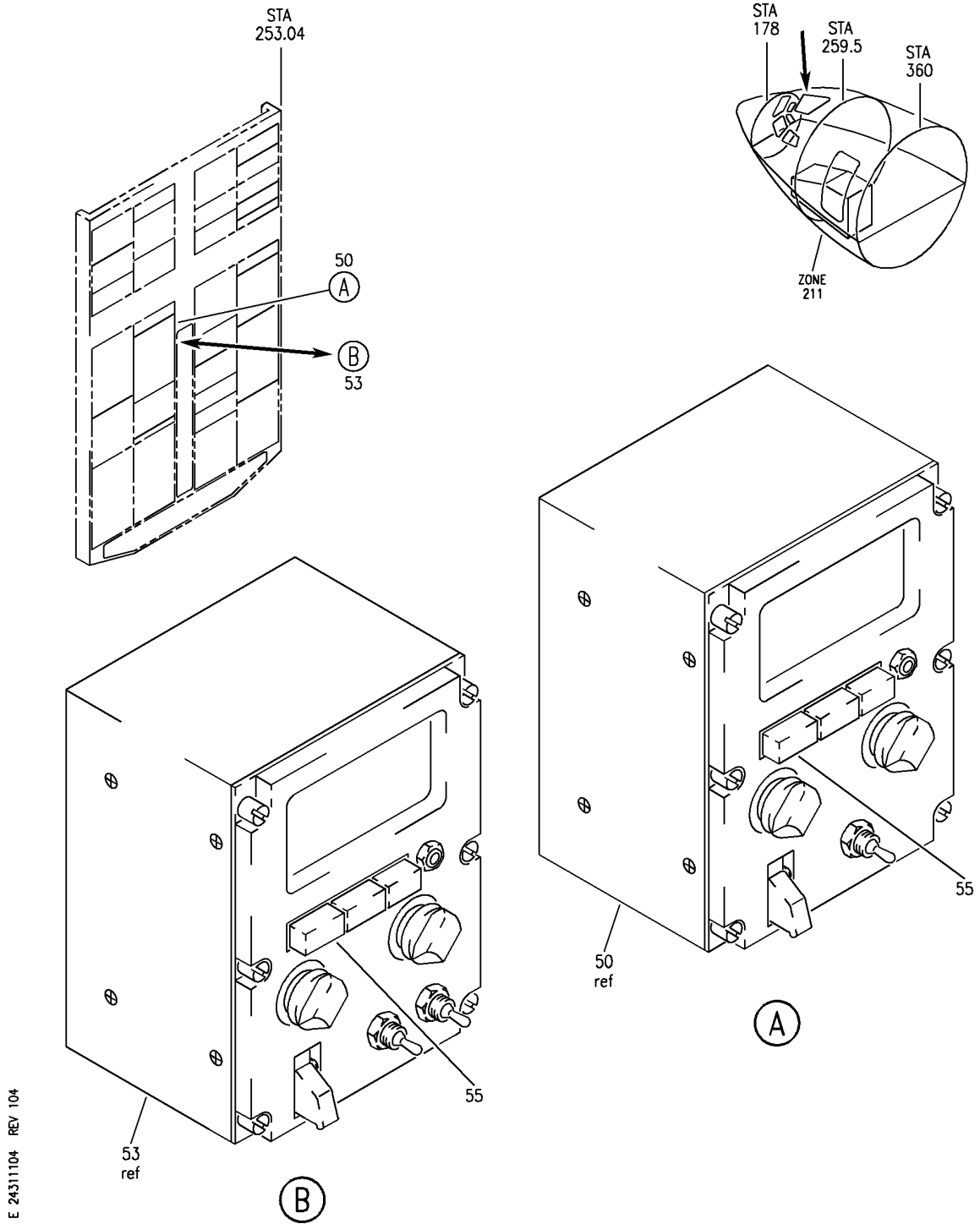
HAP

24-31-11-02

BOEING PROPRIETARY - Copyright © - Unpublished Work - See title page for details.

24-31-11
 FIG. 02
 PAGE 3
 FEB 15/09

BOEING
 737-600/700/800/900
 PARTS CATALOG (MAINTENANCE)



E 2431104 REV 104

MODULE INSTL-P5 OVHD (BATTERY ONLY)
 FIGURE 4

24-31-11-04

HAP
 OCT 10/06

24-31-11-04
 PAGE 0

BOEING
737-600/700/800/900
PARTS CATALOG (MAINTENANCE)

FIG ITEM	PART NUMBER	1 2 3 4 5 6 7	NOMENCLATURE	EFFECT FROM TO	UNITS PER ASSY
4			MODULE INSTL-P5 OVHD (BATTERY ONLY)	001028 201967	
- 1	233A3101-4		MODULE INSTL-P5 OVHD (BATTERY ONLY) FOR NHA/OTHER SYS DET SEE: 31-11-00-01C	001005	RF
- 4	233A3101-52		MODULE INSTL-P5 OVHD (BATTERY ONLY) FOR NHA/OTHER SYS DET SEE: 31-11-00-01C	006007	RF
- 4	233A3101-63		MODULE INSTL-P5 OVHD (BATTERY ONLY) FOR NHA/OTHER SYS DET SEE: 31-11-00-01C	008011	RF
- 5	233A3101-74		MODULE INSTL-P5 OVHD (BATTERY ONLY) FOR NHA/OTHER SYS DET SEE: 31-11-00-01J	201967	RF
- 7	233A3101-110		MODULE INSTL-P5 OVHD (BATTERY ONLY) FOR NHA/OTHER SYS DET SEE: 31-11-00-01C	012016	RF
- 14	233A3101-225		MODULE INSTL-P5 OVHD (BATTERY ONLY) FOR NHA/OTHER SYS DET SEE: 31-11-00-01C	017019	RF
- 14	233A3101-234		MODULE INSTL-P5 OVHD (BATTERY ONLY) FOR NHA/OTHER SYS DET SEE: 31-11-00-01C	020028	RF
50	285A1840-2		.MODULE ASSY-E/E METERS BATTERY AND GALLEY PWR PNL P5-13 SUPPLIER CODE: V89954 ELECTRICAL EQUIP NUMBER: P00513 COMPONENT MAINT MANUAL REF: 24-00-06	001005	RF
50	285A1840-4		.MODULE ASSY-E/E METERS BATTERY AND GALLEY PWR PNL P5-13 SUPPLIER CODE: V89954 ELECTRICAL EQUIP NUMBER: P00513 COMPONENT MAINT MANUAL REF: 24-00-06	001028 201967	RF

MISSING ITEM NUMBERS NOT APPLICABLE

- ITEM NOT ILLUSTRATED

HAP

24-31-11-04

BOEING PROPRIETARY - Copyright © - Unpublished Work - See title page for details.

24-31-11
FIG. 04
PAGE 1
OCT 15/08


BOEING
 737-600/700/800/900
PARTS CATALOG (MAINTENANCE)

FIG ITEM	PART NUMBER	1 2 3 4 5 6 7 NOMENCLATURE	EFFECT FROM TO	UNITS PER ASSY
4 55	19192-001	..LIGHT ASSY-BAT DISCH IND SUPPLIER CODE: V81590 ELECTRICAL EQUIP NUMBER: P50013S1	001028 201967	1

MISSING ITEM NUMBERS NOT APPLICABLE

— ITEM NOT ILLUSTRATED

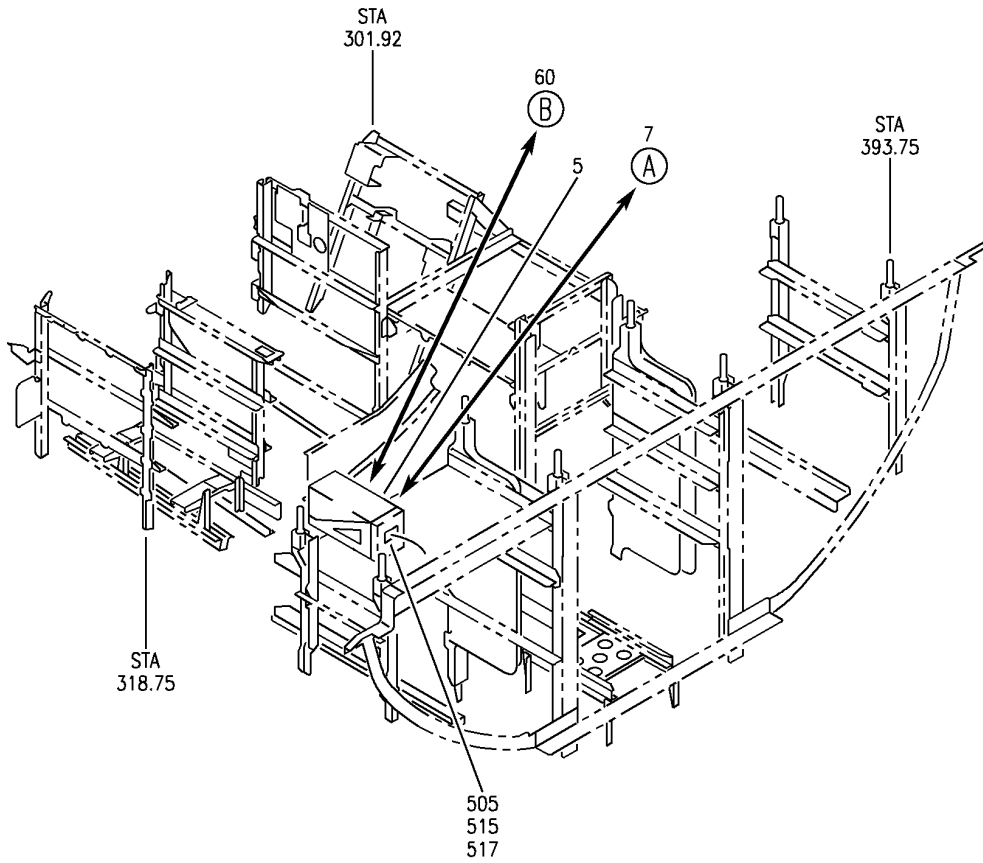
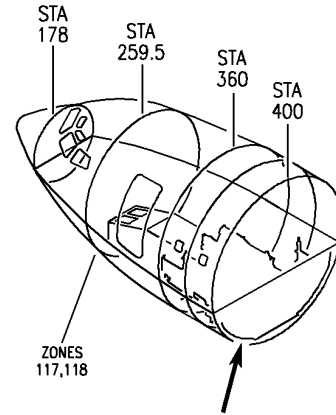
HAP

24-31-11-04

BOEING PROPRIETARY - Copyright © - Unpublished Work - See title page for details.

24-31-11
 FIG. 04
 PAGE 2
 OCT 15/08

BOEING
 737-600/700/800/900
 PARTS CATALOG (MAINTENANCE)



E 24312101 SHT 1 REV 101

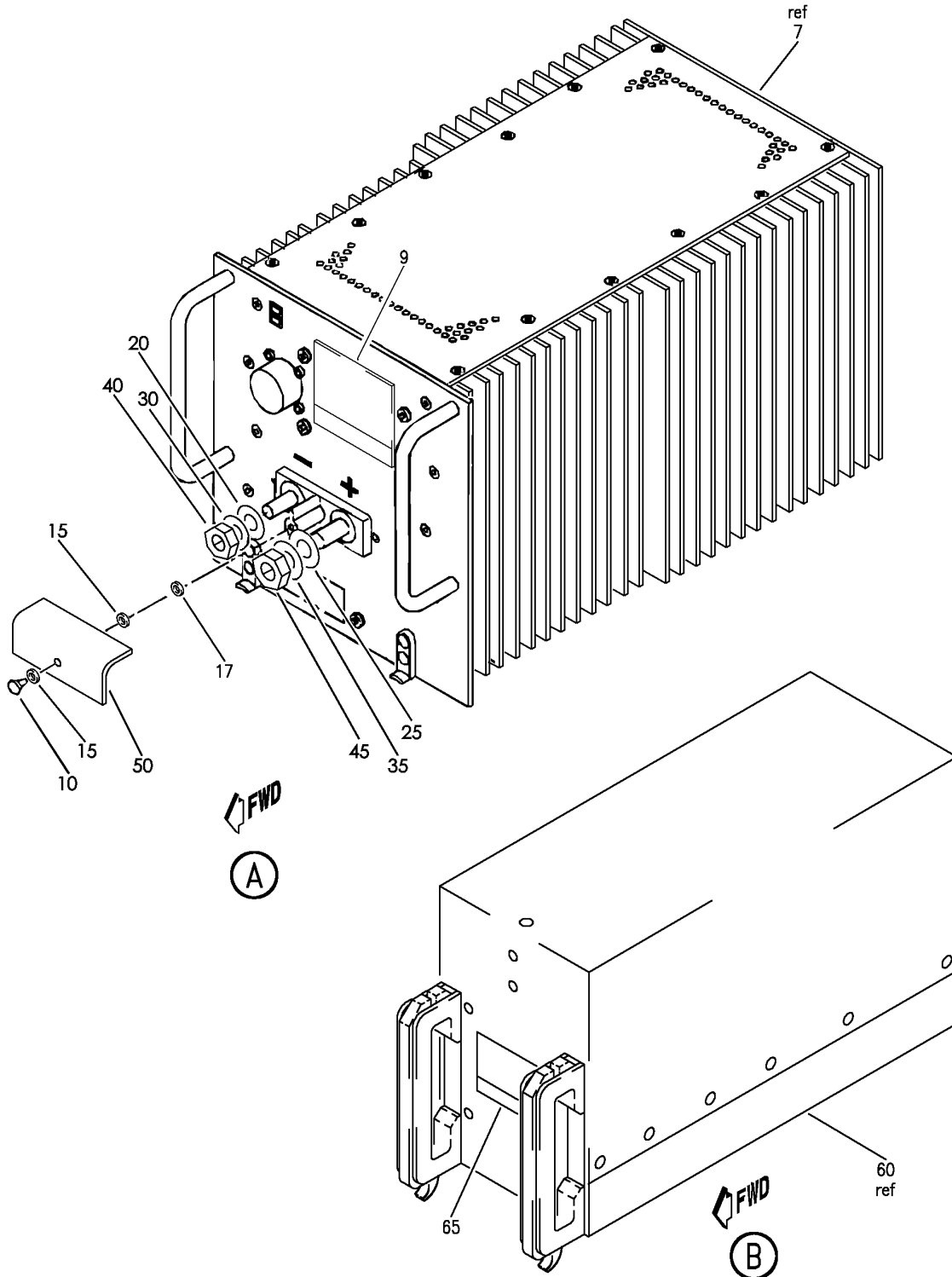
EQUIPMENT INSTL-E/E BAY E2 RACK
 FIGURE 1 (SHEET 1)

24-31-21-01

HAP
 OCT 10/06

24-31-21-01
 PAGE 0

BOEING
 737-600/700/800/900
 PARTS CATALOG (MAINTENANCE)



E 24312101 SHT 2 REV 083

EQUIPMENT INSTL-E/E BAY E2 RACK
 FIGURE 1 (SHEET 2)

24-31-21-01

HAP
 OCT 10/06

24-31-21-01
 PAGE 0A

BOEING
737-600/700/800/900
PARTS CATALOG (MAINTENANCE)

FIG ITEM	PART NUMBER	1 2 3 4 5 6 7	NOMENCLATURE	EFFECT FROM TO	UNITS PER ASSY
1			EQUIPMENT INSTL-E/E BAY E2 RACK	001030 201967	
- 1	284A0420-3		EQUIPMENT INSTL-E/E BAY E2 RACK FOR NHA SEE: 24-30-00-02 24-30-00-03	001011 201967	RF
- 2	284A0421-243302		EQUIPMENT INSTL-E/E BAY E2 RACK FOR NHA SEE: 24-30-00-03	012030	RF
7	8-930-03		.CHARGER ASSY-MAIN BATTERY (ELECTRICAL POWER ONLY) SUPPLIER CODE: V08748 FUNCTIONAL DESCRIPTION: CHARGES THE MAIN AND APU BATTERIES SPECIFICATION NUMBER: S282T003-3 ELECTRICAL EQUIP NUMBER: M00005 COMPONENT MAINT MANUAL REF: 24-31-06 FUNCTIONAL REFERENCE: PLACARDS AND MARKINGS FOR DETAILS SEE 11-36-01-50A	001030 201967	1
9	8-930007-03		..NAMEPLATE- SUPPLIER CODE: V08747 OPTIONAL PART: 8-930007-04 V08747	001030 201967	1
9	8-930007-04		..NAMEPLATE- SUPPLIER CODE: V08747 OPTIONAL PART: 8-930007-03 V08747	001030 201967	1
10	MS51957-27		..SCREW	001030 201967	1
15	NAS620C6L		..WASHER	001030 201967	2

MISSING ITEM NUMBERS NOT APPLICABLE

- ITEM NOT ILLUSTRATED

HAP

24-31-21-01

BOEING PROPRIETARY - Copyright © - Unpublished Work - See title page for details.

24-31-21
FIG. 01
PAGE 1
OCT 15/08

BOEING
737-600/700/800/900
PARTS CATALOG (MAINTENANCE)

FIG ITEM	PART NUMBER	1 2 3 4 5 6 7	NOMENCLATURE	EFFECT FROM TO	UNITS PER ASSY
1					
17	4382-2SS		.. WASHER-RTNR SUPPLIER CODE: V06540 OPTIONAL PART: WA13-02 V08747	001030 201967	1
17	WA13-02		.. WASHER-RTNR SUPPLIER CODE: V08747 OPTIONAL PART: 4382-2SS V06540	001030 201967	1
20	MS15795-812		.. WASHER	001030 201967	1
25	MS15795-814		.. WASHER	001030 201967	1
30	MS35338-140		.. WASHER	001030 201967	1
35	MS35338-141		.. WASHER	001030 201967	1
40	MS35650-3314		.. NUT	001030 201967	1
45	MS35650-3384		.. NUT	001030 201967	1
50	PC04-01		.. COVER- SUPPLIER CODE: V33586	001030 201967	1
- 510	286A6210-004		WIRE BUNDLE ASSY	001007	RF
- 510	286A6210-009		WIRE BUNDLE ASSY	008011 201967	RF
- 510	286A6210-014		WIRE BUNDLE ASSY-	012030	RF
515	BACC45FT14-12S		.CONNECTOR-BATTERY CHARGER ELECTRICAL EQUIP NUMBER: D00042 WIRING DIAGRAM REF: 243111	001030 201967	1

MISSING ITEM NUMBERS NOT APPLICABLE

- ITEM NOT ILLUSTRATED

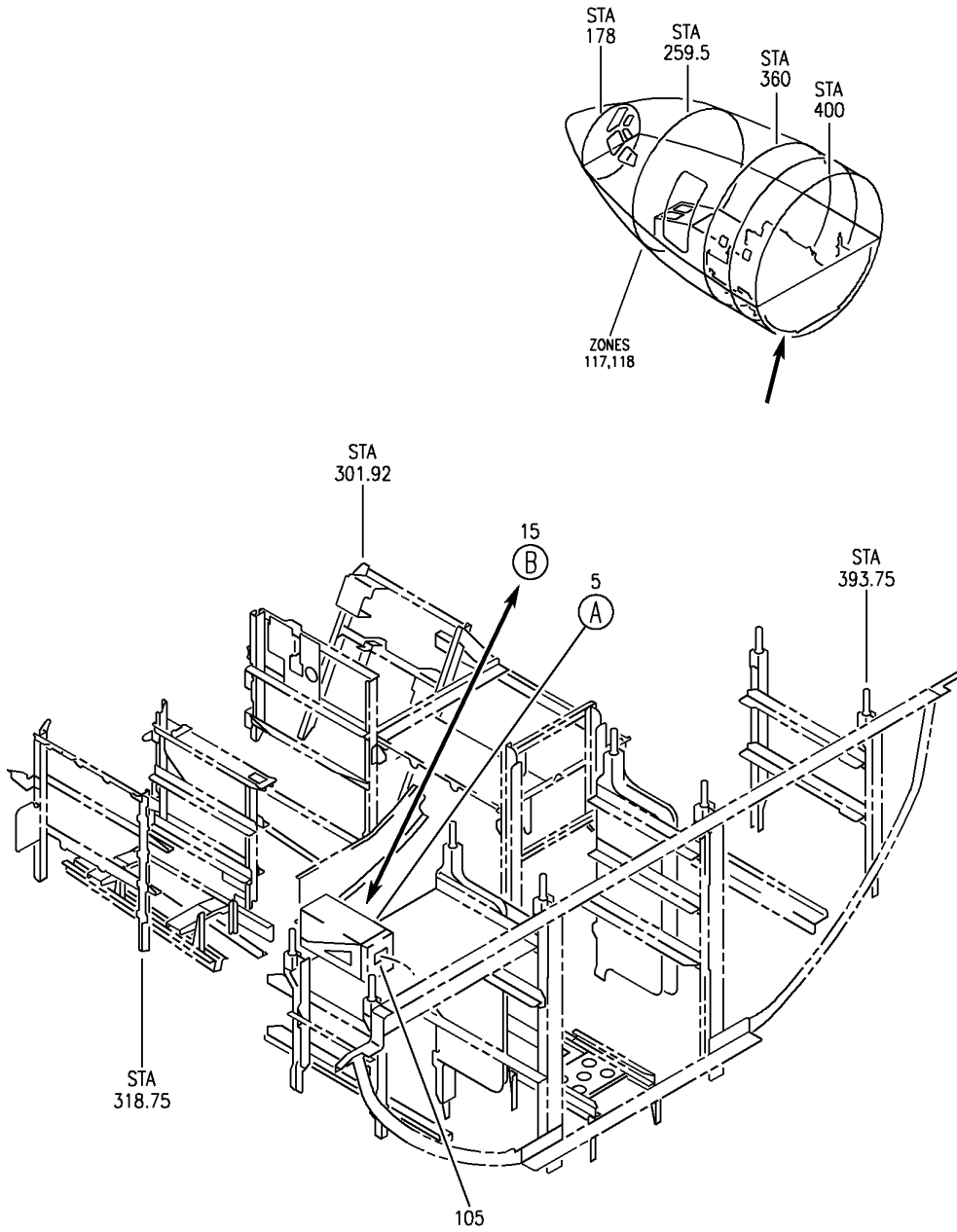
HAP

24-31-21-01

BOEING PROPRIETARY - Copyright © - Unpublished Work - See title page for details.

24-31-21
FIG. 01
PAGE 2
OCT 15/08

BOEING
737-600/700/800/900
PARTS CATALOG (MAINTENANCE)



E 24-31-21-01J SHT 1 REV 123

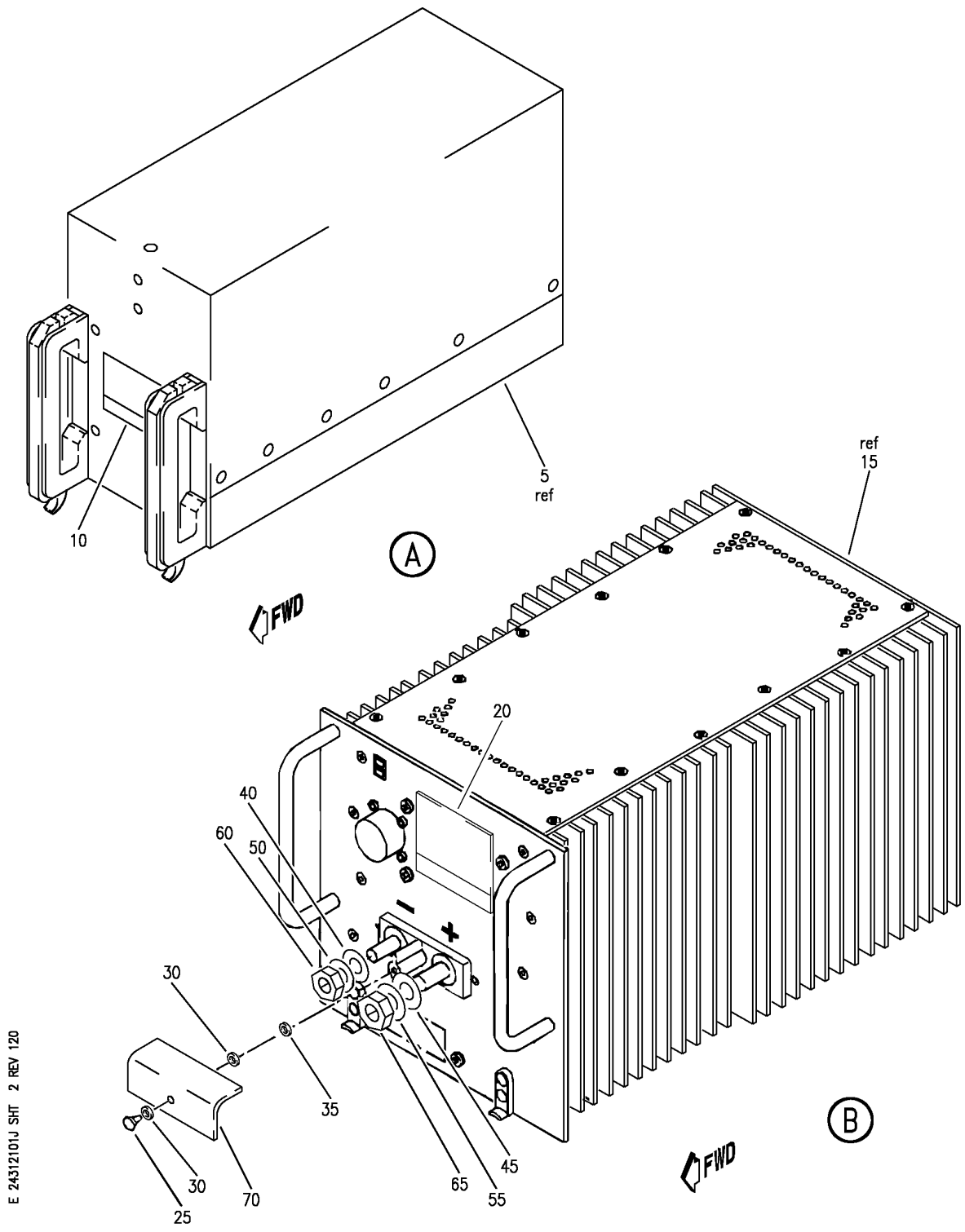
EQUIPMENT INSTL-E/E BAY E2 RACK
FIGURE 1J (SHEET 1)

HAP
OCT 10/06

24-31-21-01J

24-31-21-01J
PAGE 0

BOEING
 737-600/700/800/900
 PARTS CATALOG (MAINTENANCE)



E 24312101J SHT 2 REV 120

EQUIPMENT INSTL-E/E BAY E2 RACK
 FIGURE 1J (SHEET 2)

24-31-21-01J

HAP
 OCT 10/06

24-31-21-01J
 PAGE 0A

BOEING
737-600/700/800/900
PARTS CATALOG (MAINTENANCE)

FIG ITEM	PART NUMBER	1 2 3 4 5 6 7	NOMENCLATURE	EFFECT FROM TO	UNITS PER ASSY
1J			EQUIPMENT INSTL-E/E BAY E2 RACK	031200 968999	
- 1	MODREF85654		EQUIPMENT INSTL-E/E BAY E2 RACK	031200 968999	1
15	8-930-03		MODULE NUMBER: 284A0421-243302 REV A .CHARGER ASSY-MAIN BATTERY (ELECTRICAL POWER ONLY) SUPPLIER CODE: V08748 FUNCTIONAL DESCRIPTION: CHARGES THE MAIN AND APU BATTERIES SPECIFICATION NUMBER: S282T003-3 ELECTRICAL EQUIP NUMBER: M00005 COMPONENT MAINT MANUAL REF: 24-31-06 MAINTENANCE MANUAL REF: 24-31-31 FUNCTIONAL REFERENCE: PLACARDS AND MARKINGS FOR DETAILS SEE 11-36-01-50C	031200 968999	1
15	8-930-03MODA		.CHARGER ASSY-BATTERY (ELECTRICAL POWER ONLY) SUPPLIER CODE: V08748 ELECTRICAL EQUIP NUMBER: M00005 COMPONENT MAINT MANUAL REF: 24-31-06 MAINTENANCE MANUAL REF: 24-31-31 FUNCTIONAL REFERENCE: PLACARDS AND MARKINGS FOR DETAILS SEE 11-36-01-50C	031200 968999	1
20	8-930007-03		..NAMEPLATE- SUPPLIER CODE: V08747 OPTIONAL PART: 8-930007-04 V08747	031200 968999	1

MISSING ITEM NUMBERS NOT APPLICABLE

- ITEM NOT ILLUSTRATED

HAP

24-31-21-01J

BOEING PROPRIETARY - Copyright © - Unpublished Work - See title page for details.

24-31-21
FIG. 01J
PAGE 1
FEB 15/09

BOEING
737-600/700/800/900
PARTS CATALOG (MAINTENANCE)

FIG ITEM	PART NUMBER	1 2 3 4 5 6 7	NOMENCLATURE	EFFECT FROM TO	UNITS PER ASSY
1 J					
20	8-930007-04	..	NAMEPLATE- SUPPLIER CODE: V08747 OPTIONAL PART: 8-930007-03 V08747	031200 968999	1
25	MS51957-27	..	SCREW	031200 968999	1
30	NAS620C6L	..	WASHER	031200 968999	2
35	4382-2SS	..	WASHER-RTNR SUPPLIER CODE: V06540 OPTIONAL PART: WA13-02 V08747	031200 968999	1
35	WA13-02	..	WASHER-RTNR SUPPLIER CODE: V08747 OPTIONAL PART: 4382-2SS V06540	031200 968999	1
40	MS15795-812	..	WASHER	031200 968999	1
45	MS15795-814	..	WASHER	031200 968999	1
50	MS35338-140	..	WASHER	031200 968999	1
55	MS35338-141	..	WASHER	031200 968999	1
60	MS35650-3314	..	NUT	031200 968999	1
65	MS35650-3384	..	NUT	031200 968999	1
70	PC04-01	..	COVER- SUPPLIER CODE: V33586	031200 968999	1

MISSING ITEM NUMBERS NOT APPLICABLE

— ITEM NOT ILLUSTRATED

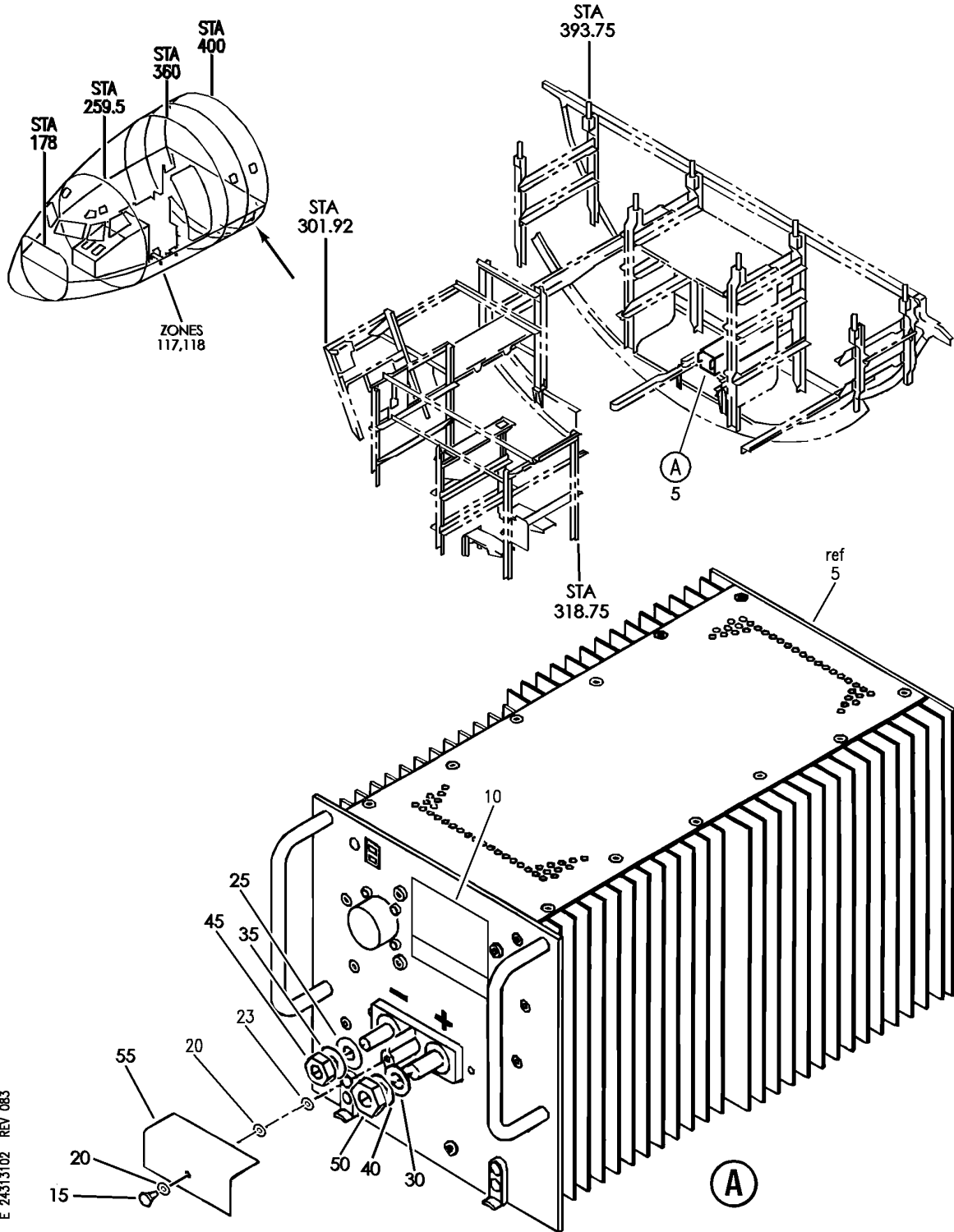
HAP

24-31-21-01J

BOEING PROPRIETARY - Copyright © - Unpublished Work - See title page for details.

24-31-21
FIG. 01J
PAGE 2
FEB 15/09

BOEING
 737-600/700/800/900
 PARTS CATALOG (MAINTENANCE)



E 24313102 REV 083

EQUIPMENT INSTL-E/E BAY E3 RACK
 FIGURE 2

24-31-31-02

HAP
 OCT 10/06

24-31-31-02
 PAGE 0

BOEING
737-600/700/800/900
PARTS CATALOG (MAINTENANCE)

FIG ITEM	PART NUMBER	1 2 3 4 5 6 7	NOMENCLATURE	EFFECT FROM TO	UNITS PER ASSY
2			EQUIPMENT INSTL-E/E BAY E3 RACK		
- 1	284A0430-108		EQUIPMENT INSTL-E/E BAY E3 RACK FOR NHA SEE: 24-30-00-02 24-30-00-03	001011 201967	RF
- 2	284A0431-243302		EQUIPMENT INSTL-E/E BAY E3-3 SHELF FOR NHA SEE: 24-30-00-03	012030	RF
- 2	MODREF85698		EQUIPMENT INSTL-E/E BAY E3-3 SHELF MODULE NUMBER: 284A0431-243302 REV A	031200 968999	1
5	8-930-03		.CHARGER ASSY-AUX BATTERY (ELECTRICAL POWER ONLY) SUPPLIER CODE: V08748 FUNCTIONAL DESCRIPTION: CHARGES THE MAIN AND APU BATTERIES SPECIFICATION NUMBER: S282T003-3 ELECTRICAL EQUIP NUMBER: M03055 COMPONENT MAINT MANUAL REF: 24-31-06 MAINTENANCE MANUAL REF: 24-31-31 FUNCTIONAL REFERENCE: PLACARDS AND MARKINGS FOR DETAILS SEE 11-36-01-50A	001050 054999	1
10	8-930007-03		..NAMEPLATE- SUPPLIER CODE: V08747 OPTIONAL PART: 8-930007-04 V08747		1
10	8-930007-04		..NAMEPLATE- SUPPLIER CODE: V08747 OPTIONAL PART: 8-930007-03 V08747		1
15	MS51957-27		..SCREW		1
20	NAS620C6L		..WASHER		2

R
R
R
R
R
R
R
R
R
R
R
R
R
R
R
R
R
R
R
R
R
R

MISSING ITEM NUMBERS NOT APPLICABLE

- ITEM NOT ILLUSTRATED

HAP

24-31-31-02

24-31-31
FIG. 02
PAGE 1
JUN 15/09

BOEING
737-600/700/800/900
PARTS CATALOG (MAINTENANCE)

FIG ITEM	PART NUMBER	1 2 3 4 5 6 7	NOMENCLATURE	EFFECT FROM TO	UNITS PER ASSY
2					
23	4382-2SS		.. WASHER-RTNR SUPPLIER CODE: V06540 OPTIONAL PART: WA13-02 V08747		1
23	WA13-02		.. WASHER-RTNR SUPPLIER CODE: V08747 OPTIONAL PART: 4382-2SS V06540		1
25	MS15795-812		.. WASHER		1
30	MS15795-814		.. WASHER		1
35	MS35338-140		.. WASHER		1
40	MS35338-141		.. WASHER		1
45	MS35650-3314		.. NUT		1
50	MS35650-3384		.. NUT		1
55	PC04-01		.. COVER- SUPPLIER CODE: V33586		1
- 500	286A5110-014		WIRE BUNDLE ASSY-P91 (AFT DISC) TO E/E BAY	012030	1
- 500	286A5110-015		WIRE BUNDLE ASSY-P91 (AFT DISC) TO E/E BAY	008011	1
- 500	286A5110-016		WIRE BUNDLE ASSY-P91 (AFT DISC) TO E/E BAY	201967	1
- 500	286A5110-302		WIRE BUNDLE ASSY-P91 (AFT DISC) TO E/E BAY	001007	1
- 501	286A5110-023		WIRE BUNDLE ASSY	031046 054105 968999	1
505	BACC45FT14-12S		.CONNECTOR-BATTERY CHARGER ELECTRICAL EQUIP NUMBER: D10342 WIRING DIAGRAM REF: 243112	001046 054105 201999	1

MISSING ITEM NUMBERS NOT APPLICABLE

- ITEM NOT ILLUSTRATED

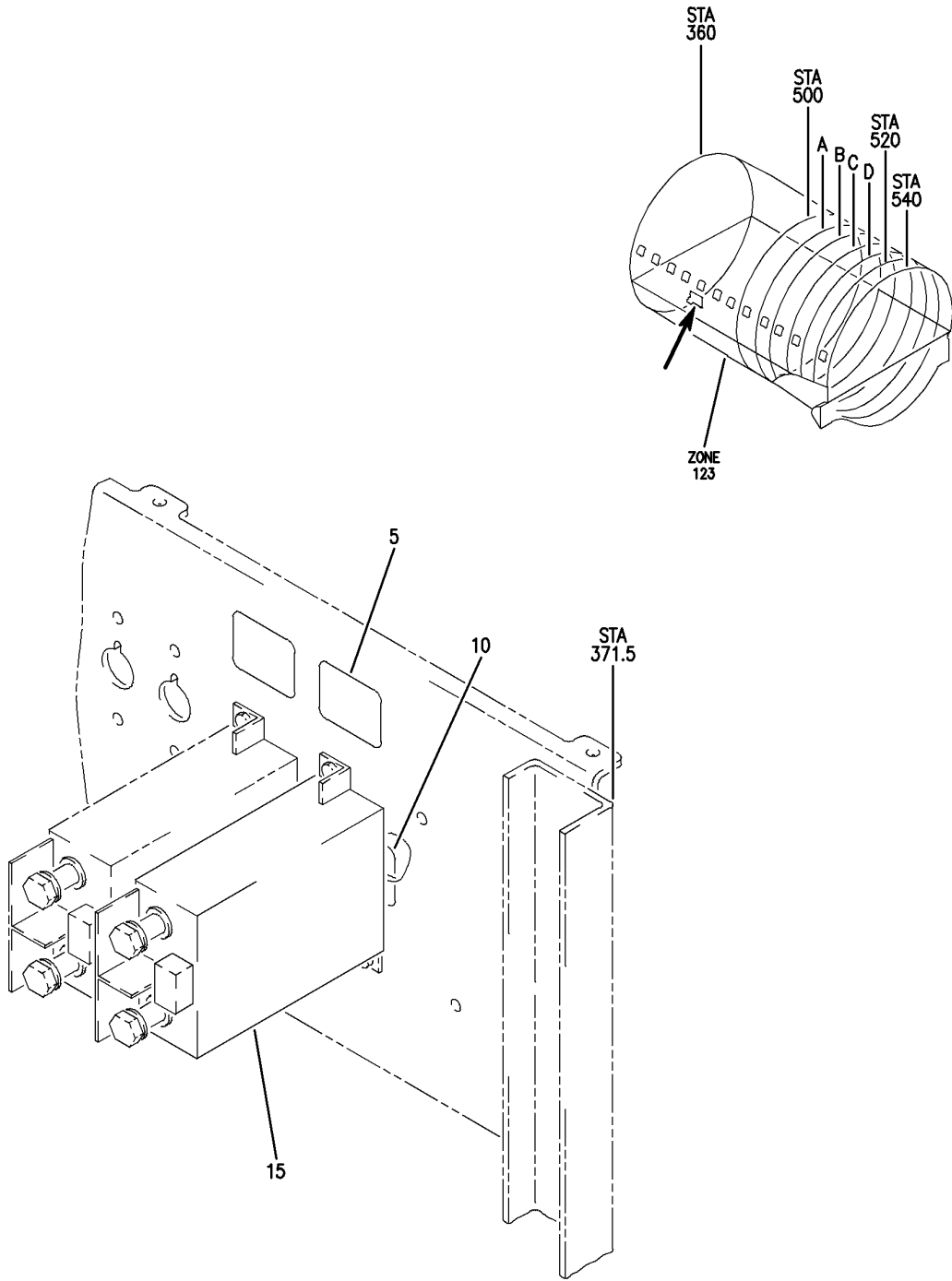
HAP

24-31-31-02

BOEING PROPRIETARY - Copyright © - Unpublished Work - See title page for details.

24-31-31
FIG. 02
PAGE 2
FEB 15/09

BOEING
 737-600/700/800/900
 PARTS CATALOG (MAINTENANCE)



E 24314102 REV 063

EQUIPMENT INSTL-E/E COMPT MAIN BATTERY (DUAL BATTERY REMOTE-CONTROL CIRCUIT BREAKER ONLY)
 FIGURE 2

24-31-41-02

HAP
 OCT 10/06

24-31-41-02
 PAGE 0

BOEING
737-600/700/800/900
PARTS CATALOG (MAINTENANCE)

FIG ITEM	PART NUMBER	1 2 3 4 5 6 7	NOMENCLATURE	EFFECT FROM TO	UNITS PER ASSY
2			EQUIPMENT INSTL-E/E COMPT MAIN BATTERY (DUAL BATTERY REMOTE-CONTROL CIRCUIT BREAKER ONLY)	001030 201967	
- 1	284A0816-4		EQUIPMENT INSTL-E/E COMPT MAIN BATTERY (DUAL BATTERY REMOTE-CONTROL CIRCUIT BREAKER ONLY) FOR NHA/OTHER SYS DET SEE: 24-30-00-02 24-30-00-03	001030 201967	RF
5	BAC27DEX6523		.DECAL- PLACARD CONTENT: C1212 DUAL BATTERY RCCB	001030 201967	1
10	BAC27DEX6524		.DECAL- PLACARD CONTENT: C1212 DUAL BATTERY RCCB (BACK OF PANEL)	001030 201967	1
15	BACC18AF100		.CIRCUIT BREAKER- ELECTRICAL EQUIP NUMBER: C01212	001030 201967	1
- 20	NAS1802-08-8P		ATTACHING PARTS .SCREW- -----*-----	001030 201967	2

MISSING ITEM NUMBERS NOT APPLICABLE

- ITEM NOT ILLUSTRATED

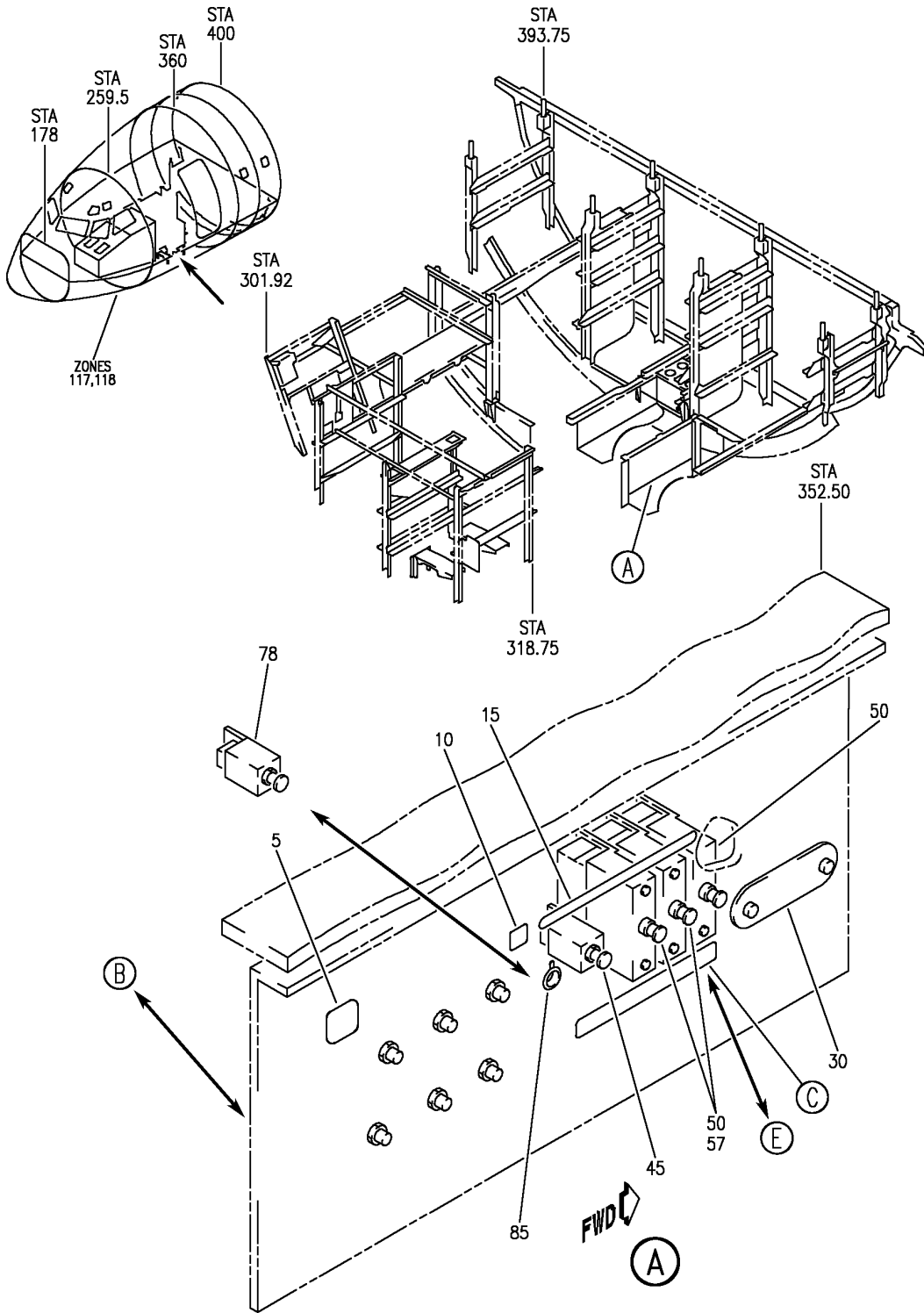
HAP

24-31-41-02

BOEING PROPRIETARY - Copyright © - Unpublished Work - See title page for details.

24-31-41
FIG. 02
PAGE 1
OCT 15/08

BOEING
 737-600/700/800/900
 PARTS CATALOG (MAINTENANCE)



E 24315101 SHT 1 REV 153

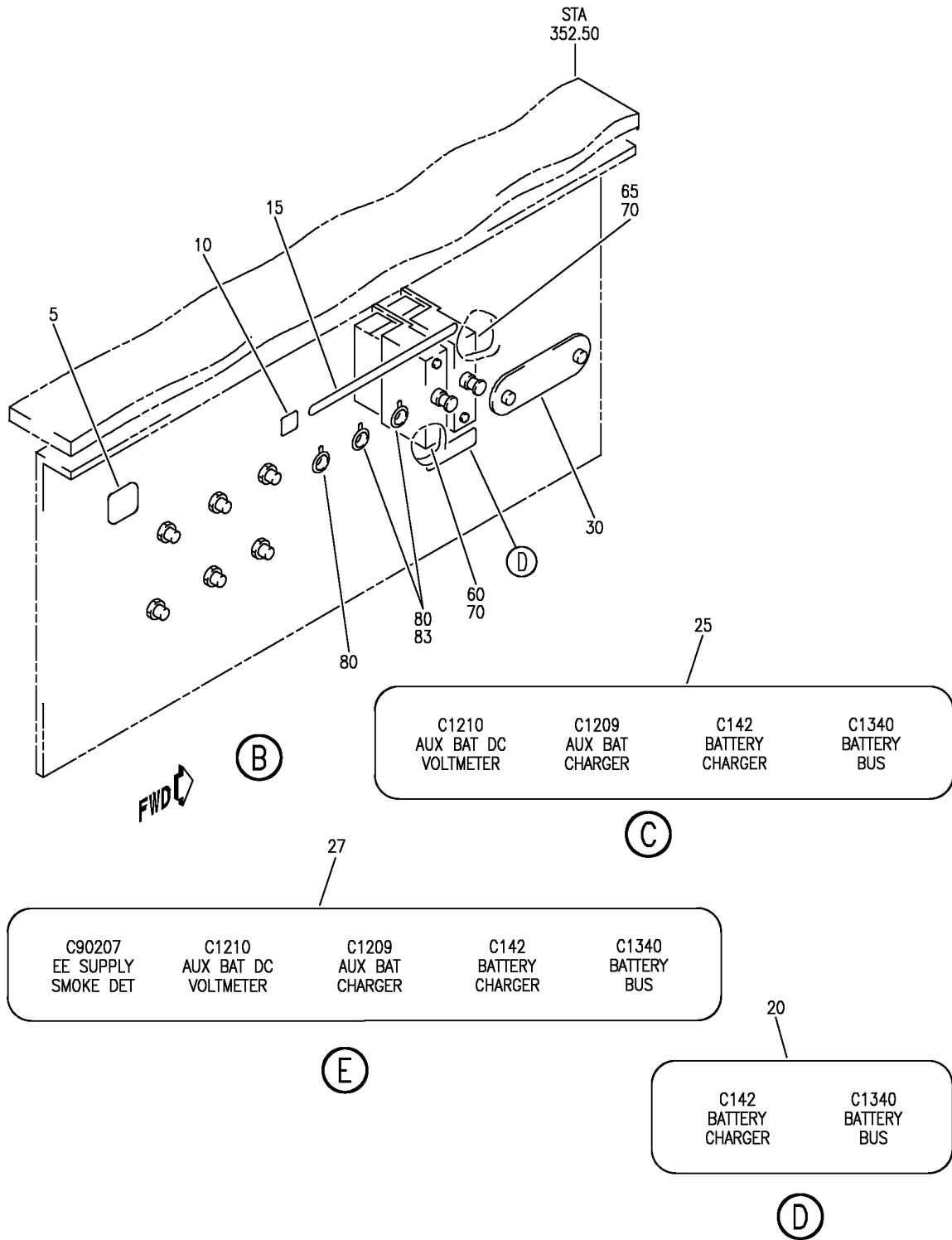
EQUIPMENT INSTL-E/E COMPT MAIN BATTERY (CIRCUIT BREAKER ONLY)
 FIGURE 1 (SHEET 1)

24-31-51-01

HAP
 JUN 15/09

24-31-51-01
 PAGE 0

BOEING
 737-600/700/800/900
 PARTS CATALOG (MAINTENANCE)



E 24315101 SHT 2 REV 153

EQUIPMENT INSTL-E/E COMPT MAIN BATTERY (CIRCUIT BREAKER ONLY)
 FIGURE 1 (SHEET 2)

24-31-51-01

HAP
 JUN 15/09

24-31-51-01
 PAGE 0A

BOEING
737-600/700/800/900
PARTS CATALOG (MAINTENANCE)

FIG ITEM	PART NUMBER	1 2 3 4 5 6 7	NOMENCLATURE	EFFECT FROM TO	UNITS PER ASSY
1			EQUIPMENT INSTL-E/E COMPT MAIN BATTERY (CIRCUIT BREAKER ONLY)	001030 201967	
- 1	284A0816-4		EQUIPMENT INSTL-E/E COMPT MAIN BATTERY (CIRCUIT BREAKER ONLY) FOR NHA/OTHER SYS DET SEE: 24-30-00-02 24-30-00-03	001030 201967	RF
5	BAC27DEX5978		.DECAL- PLACARD CONTENT: J9	001030 201967	1
10	BAC27DEX5979		.DECAL- PLACARD CONTENT: A	001030 201967	1
15	BAC27DEX6225		.DECAL- PLACARD CONTENT: 1 THRU 5	001030 201967	1
25	BAC27DEX6525		.DECAL-	001030 201967	1
30	284A3816-1		.PLATE-COVER ATTACHING PARTS	001030 201967	1
- 35	BACS12GU3K8		.SCREW	001030 201967	2
- 40	NAS1149D0332J		.WASHER	001030 201967	2
45	2TC47-2-5		-----*----- .CIRCUIT BREAKER- SUPPLIER CODE: V82647 SPECIFICATION NUMBER: BACC18AD2 OPTIONAL PART: 4310-029-205 V76374 ELECTRICAL EQUIP NUMBER: C01210	001030 201967	1
50	160-022-100		.CIRCUIT BREAKER- SUPPLIER CODE: V76374 SPECIFICATION NUMBER: BACC18X100 ELECTRICAL EQUIP NUMBER: C00142 C01209 C01340 OPTIONAL PART: BACC18X100B	001030 201967	3

MISSING ITEM NUMBERS NOT APPLICABLE

- ITEM NOT ILLUSTRATED

HAP

24-31-51-01

BOEING PROPRIETARY - Copyright © - Unpublished Work - See title page for details.

24-31-51
FIG. 01
PAGE 1
OCT 15/08

BOEING
737-600/700/800/900
PARTS CATALOG (MAINTENANCE)

FIG ITEM	PART NUMBER	1 2 3 4 5 6 7	NOMENCLATURE	EFFECT FROM TO	UNITS PER ASSY
1	50 BACC18X100B		.CIRCUIT BREAKER- ELECTRICAL EQUIP NUMBER: C00142 C01209 C01340 OPTIONAL PART: BACC18X100 ATTACHING PARTS	001030 201967	3
-	55 NAS1802-06-5P		.SCREW	001030 201967	6
			-----*-----		
R R	85 BACP20B43B		.PLUG-	001030 201967	1

MISSING ITEM NUMBERS NOT APPLICABLE

- ITEM NOT ILLUSTRATED

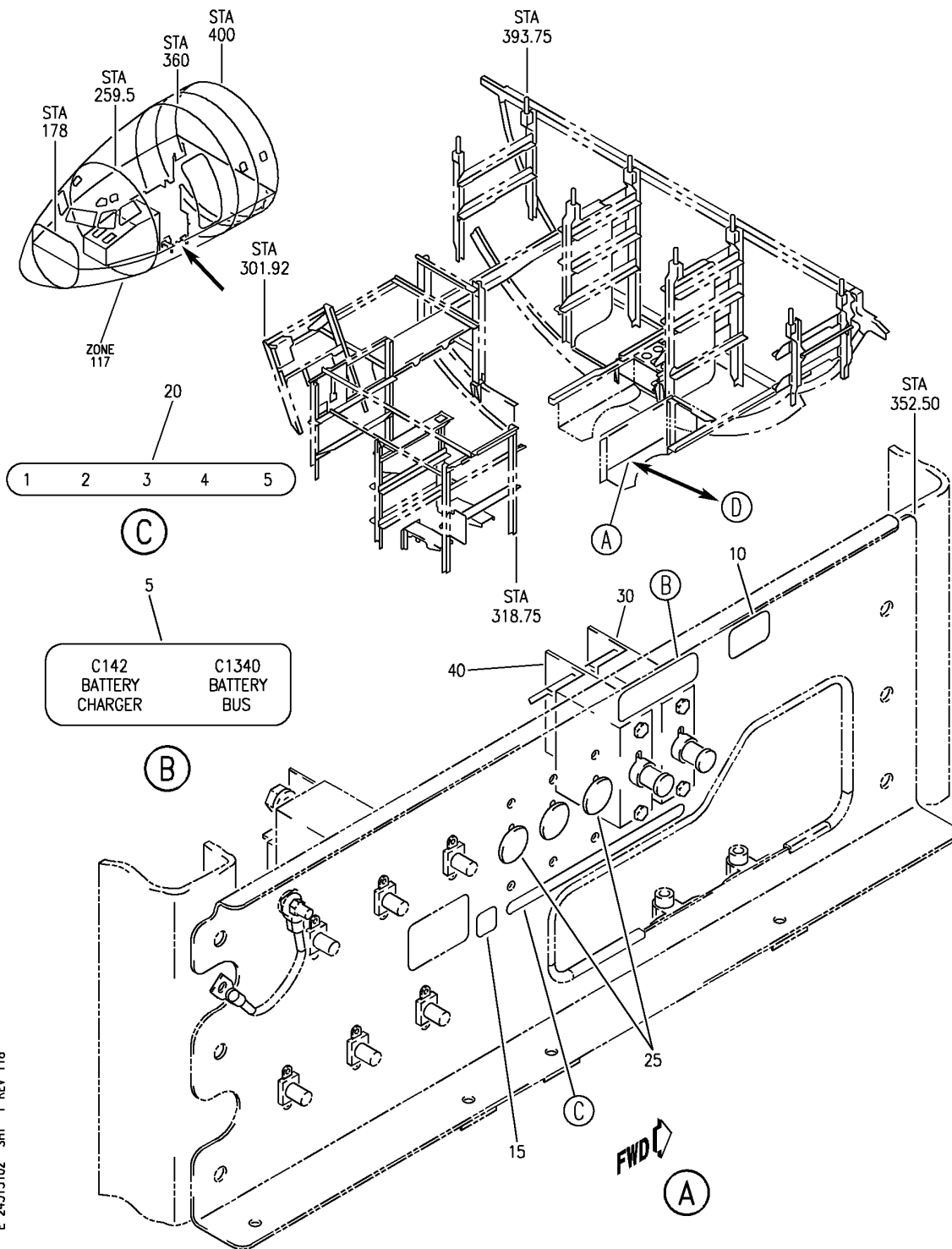
HAP

24-31-51-01

BOEING PROPRIETARY - Copyright © - Unpublished Work - See title page for details.

24-31-51
FIG. 01
PAGE 2
JUN 15/09

BOEING
737-600/700/800/900
PARTS CATALOG (MAINTENANCE)



E 24315102 SHT 1 REV 118

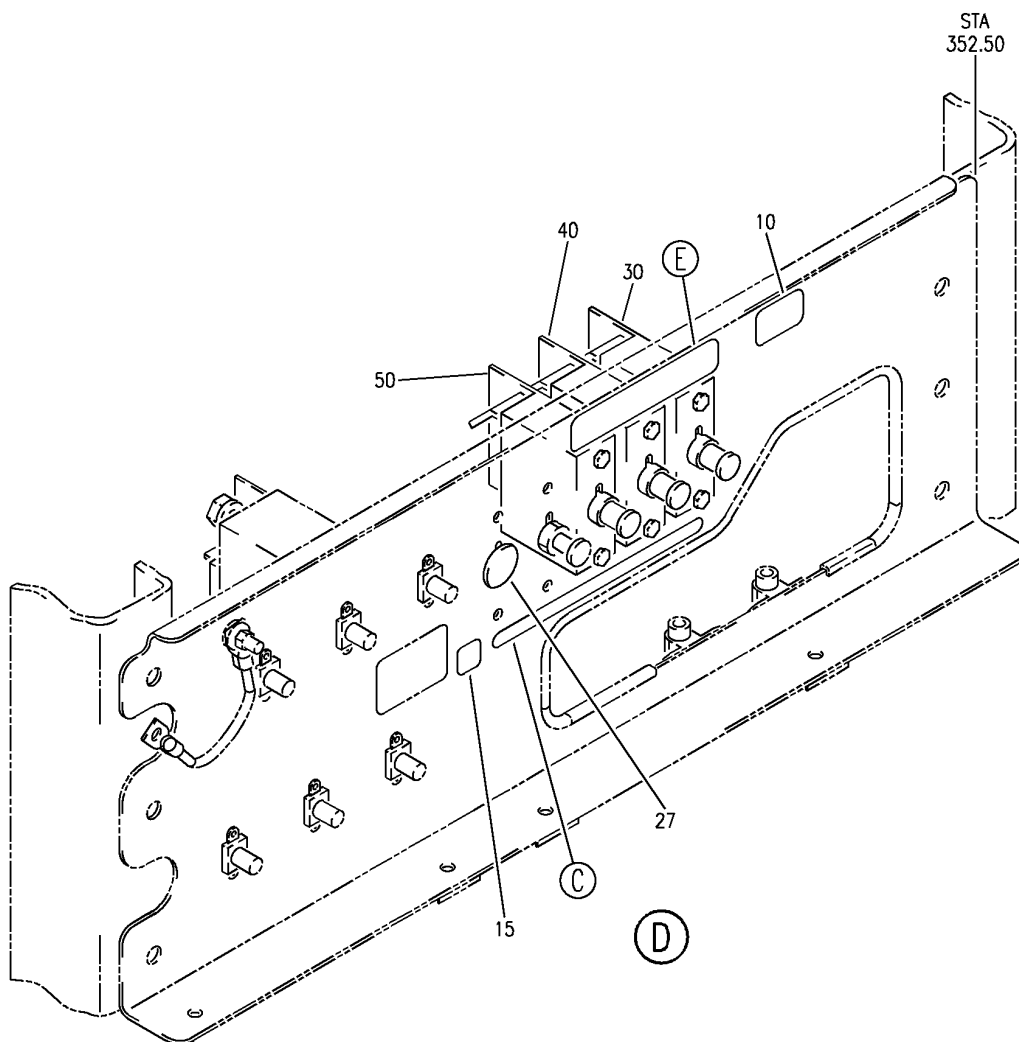
PANEL ASSY-J9 E/E COMPT (DC GENERATION SYSTEM ONLY)
FIGURE 2 (SHEET 1)

24-31-51-02

HAP
OCT 10/06

24-31-51-02
PAGE 0

BOEING
 737-600/700/800/900
 PARTS CATALOG (MAINTENANCE)



C1210 AUX BAT DC VOLTMETER	C1209 AUX BAT CHARGER	C142 BATTERY CHARGER	C1340 BATTERY BUS
----------------------------------	-----------------------------	----------------------------	-------------------------

(E)

E 24315102 SHT 2 REV 118

PANEL ASSY-J9 E/E COMPT (DC GENERATION SYSTEM ONLY)
 FIGURE 2 (SHEET 2)

24-31-51-02

HAP
 OCT 10/06

24-31-51-02
 PAGE 0A

BOEING
737-600/700/800/900
PARTS CATALOG (MAINTENANCE)

FIG ITEM	PART NUMBER	1 2 3 4 5 6 7	NOMENCLATURE	EFFECT FROM TO	UNITS PER ASSY
2			PANEL ASSY-J9 E/E COMPT (DC GENERATION SYSTEM ONLY)	031200 968999	
- 1	284A1816-4		PANEL ASSY-J9 E/E COMPT (DC GENERATION SYSTEM ONLY) FOR NHA/OTHER SYS DET SEE: 25-50-51-02A	031200 968999	RF
	7 BAC27DEX6525		.DECAL	031200 968999	1
	10 BAC27DEX5978		.DECAL- PLACARD CONTENT: J9	031200 968999	1
	15 BAC27DEX5979		.DECAL- PLACARD CONTENT: A	031200 968999	1
	20 BAC27DEX6225		.DECAL	031200 968999	1
	27 BACP20B63P		.PLUG	031200 968999	1
	30 BACC18X100B		.CIRCUIT BREAKER- ELECTRICAL EQUIP NUMBER: C01340 ATTACHING PARTS	031200 968999	1
- 35	BACS12HN06-5		.SCREW	031200 968999	2
	40 BACC18X100B		-----*----- .CIRCUIT BREAKER- ELECTRICAL EQUIP NUMBER: C00142 ATTACHING PARTS	031200 968999	1
- 45	BACS12HN06-5		.SCREW	031200 968999	2
	50 BACC18X100B		-----*----- .CIRCUIT BREAKER- ELECTRICAL EQUIP NUMBER: C01209 ATTACHING PARTS	031200 968999	1
- 55	BACS12HN06-5		.SCREW	031200 968999	2
			-----*-----		

MISSING ITEM NUMBERS NOT APPLICABLE

- ITEM NOT ILLUSTRATED

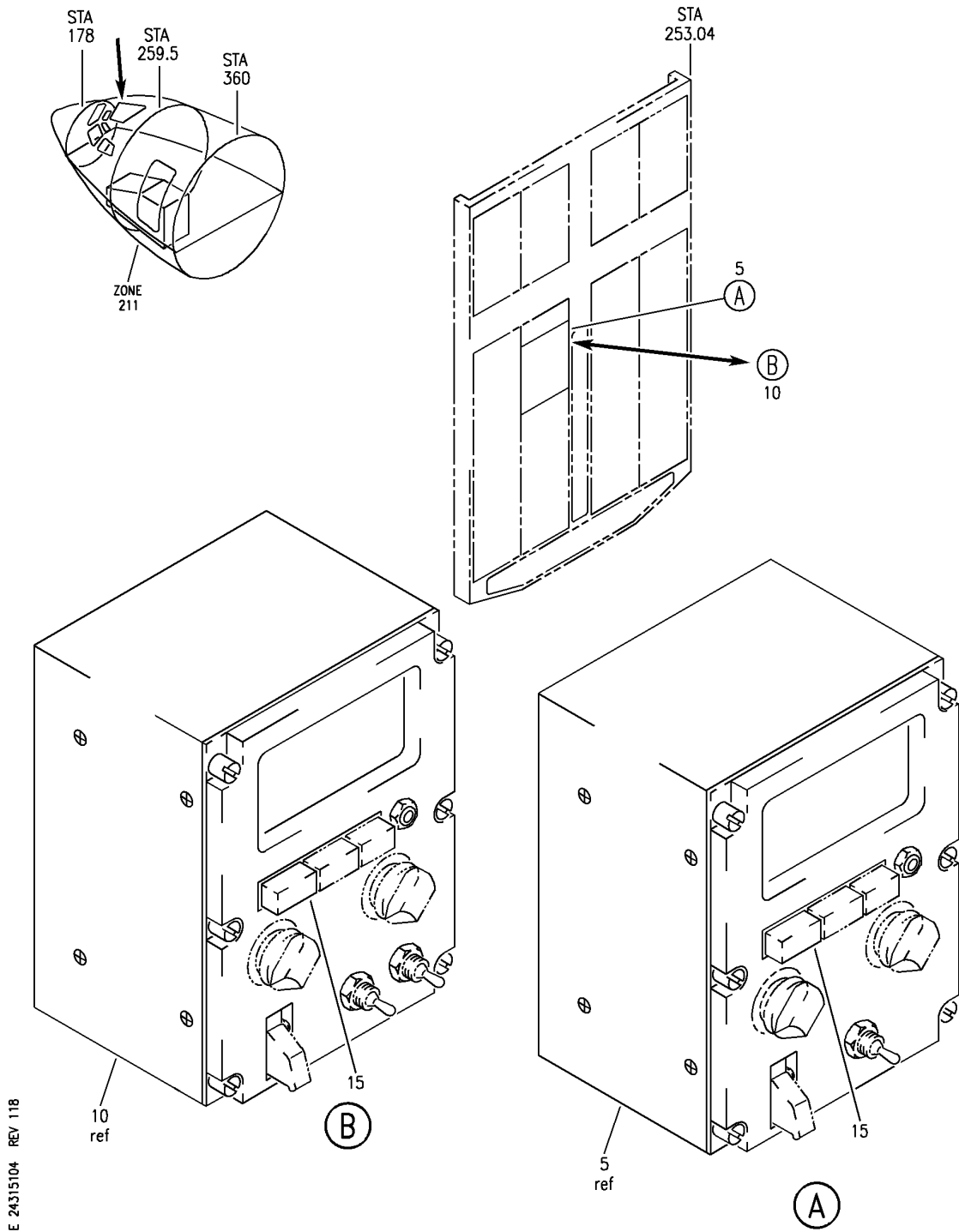
HAP

24-31-51-02

BOEING PROPRIETARY - Copyright © - Unpublished Work - See title page for details.

24-31-51
FIG. 02
PAGE 1
OCT 15/08

BOEING
 737-600/700/800/900
 PARTS CATALOG (MAINTENANCE)



E 24315104 REV 118

MODULE INSTL-ELEC METER BATTERY AND GALLEY PWR 30 MIN STBY P5-13 (DC GENERATION SYSTEM ONLY)

FIGURE 4

24-31-51-04

HAP
 OCT 10/06

24-31-51-04
 PAGE 0

BOEING
737-600/700/800/900
PARTS CATALOG (MAINTENANCE)

FIG ITEM	PART NUMBER	1 2 3 4 5 6 7	NOMENCLATURE	EFFECT FROM TO	UNITS PER ASSY
4			MODULE INSTL-ELEC METER BATTERY AND GALLEY PWR 30 MIN STBY P5-13 (DC GENERATION SYSTEM ONLY)	029200 968999	
- 1	233A3104-243304		MODULE INSTL-ELEC METER BATTERY AND GALLEY PWR 60 MIN STBY P5-13 (DC GENERATION SYSTEM ONLY) FOR NHA/OTHER SYS DET SEE: 31-11-00-01C	029030	RF
- 1	MODREF82431		MODULE INSTL-ELEC METER BATTERY AND GALLEY PWR 60 MIN STBY P5-13 (DC GENERATION SYSTEM ONLY) MODULE NUMBER: 233A3104-243308 REV A FOR OTHER SYS DETAILS SEE: 11-31-01-24Q 24-21-53-02 24-32-51-01 31-11-94-12 33-11-52-13	031036 038038	1
- 1	MODREF319459		MODULE INSTL-ELEC METER BATTERY AND GALLEY PWR 30 MIN STBY P5-13 (DC GENERATION SYSTEM ONLY) MODULE NUMBER: 233A3104-243308 REV B FOR OTHER SYS DETAILS SEE: 11-31-01-37G 11-31-01-39Z 24-21-53-02 24-32-51-01 31-11-94-04X 31-11-94-07Q 33-11-52-02X 33-11-52-06K	037037 039200 968999	1
5	285A1840-4		.MODULE ASSY- SUPPLIER CODE: V89954 ELECTRICAL EQUIP NUMBER: P00513 COMPONENT MAINT MANUAL REF: 24-00-06	029030	RF

R
R
R
R
R
R
R
R
R
R
R
R

MISSING ITEM NUMBERS NOT APPLICABLE

- ITEM NOT ILLUSTRATED

HAP

24-31-51-04

24-31-51
FIG. 04
PAGE 1
JUN 15/09


BOEING
 737-600/700/800/900
PARTS CATALOG (MAINTENANCE)

FIG ITEM	PART NUMBER	1 2 3 4 5 6 7	NOMENCLATURE	EFFECT FROM TO	UNITS PER ASSY
4	10 285A1840-8		.MODULE ASSY- SUPPLIER CODE: V89954 ELECTRICAL EQUIP NUMBER: P00513 COMPONENT MAINT MANUAL REF: 24-00-06	031200 968999	RF
	15 19192-001		..LIGHT ASSY-PRESS TO TEST IND-BAT DISCHARGE SUPPLIER CODE: V81590 ELECTRICAL EQUIP NUMBER: P00513S1	029200 968999	1

MISSING ITEM NUMBERS NOT APPLICABLE

— ITEM NOT ILLUSTRATED

HAP

24-31-51-04

BOEING PROPRIETARY - Copyright © - Unpublished Work - See title page for details.

24-31-51
 FIG. 04
 PAGE 2
 OCT 15/08