

CHAPTER

00

GENERAL



CHAPTER 00
GENERAL

CH-SC-SU	Schem	Page	Sheet	Date	CH-SC-SU	Schem	Page	Sheet	Date
00-EFFECTIVE PAGES									
		1		Aug 10/2009					
		2		BLANK					
00-CONTENTS									
		1		Feb 09/2009					
		2		BLANK					
00-ALPHABETICAL INDEX									
		1		Jan 18/2007					
		2		BLANK					
00-00-00									
	1	101		Feb 09/2009					
	2	101		Feb 09/2009					
00-06-21									
	1	101		Feb 09/2009					
		102		May 13/2008					
	2	101		Feb 09/2009					
		102		May 13/2008					
	3	101		May 13/2008					
00-06-30									
		101		Feb 09/2009					
00-12-00									
		101		Feb 09/2009					
	1	101		Feb 09/2009					
		102		Jan 14/2008					

A = Added, R = Revised, D = Deleted, O = Overflow

00-EFFECTIVE PAGES



CHAPTER 00
GENERAL

Title	CH-SC-SU	Schem	Page	Sheet	Date	Effectivity
<u>SYMBOLS</u>						
SYMBOLS - MECHANICAL	00-00-00	1	101		Feb 09/2009	ALL
SYMBOLS - ELECTRICAL	00-00-00	2	101		Feb 09/2009	ALL
<u>DIMENSION AND EQUIPMENT LOCATION</u>						
AIRPLANE STATION BODY AND STABILIZER	00-06-21	1	101		Feb 09/2009	YC001-YL430
			102		May 13/2008	YM643-YM670
AIRPLANE STATION WING AND NACELLE	00-06-21	2	101		Feb 09/2009	YC001-YL430 YM645-YM670
			102		May 13/2008	YM643
		3	101		May 13/2008	YC001-YC050 YM643
MAJOR EQUIPMENT CENTERS	00-06-30		101		Feb 09/2009	ALL
<u>GROUND SERVICE ACCESS PANELS</u>						
GROUND SERVICE ACCESS PANELS	00-12-00		101		Feb 09/2009	YC015-YM649
		1			Feb 09/2009	YC001-YL430
			102		Jan 14/2008	YM643-YM670



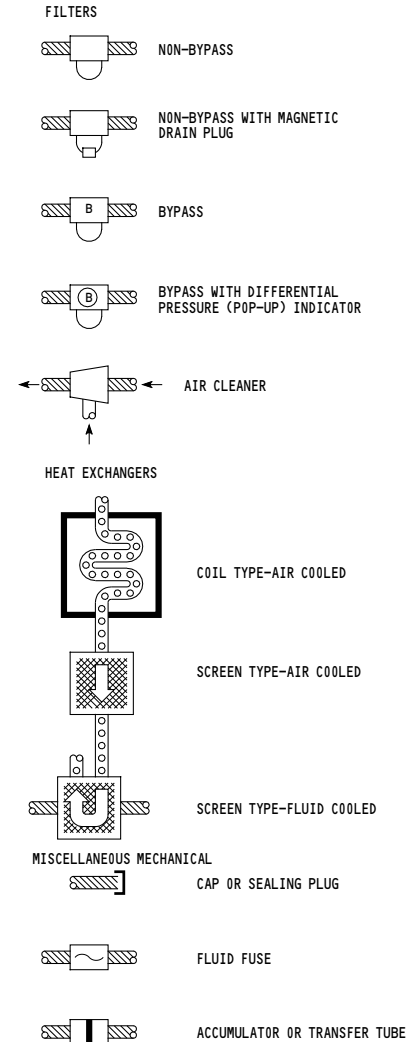
CHAPTER 00
GENERAL

CH-SC-SU	Title
00-06-21	AIRPLANE STATION BODY AND STABILIZER
00-12-00	GROUND SERVICE ACCESS PANELS
00-06-30	MAJOR EQUIPMENT CENTERS
00-00-00	SYMBOLS - MECHANICAL

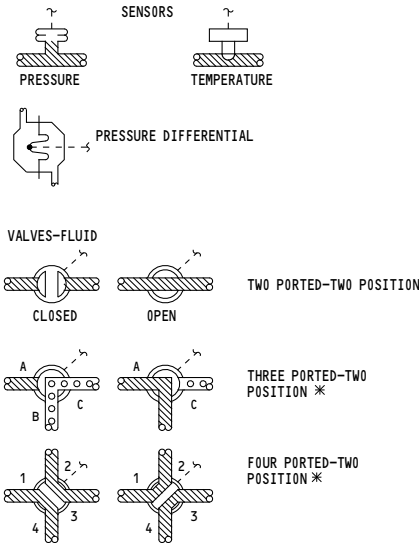
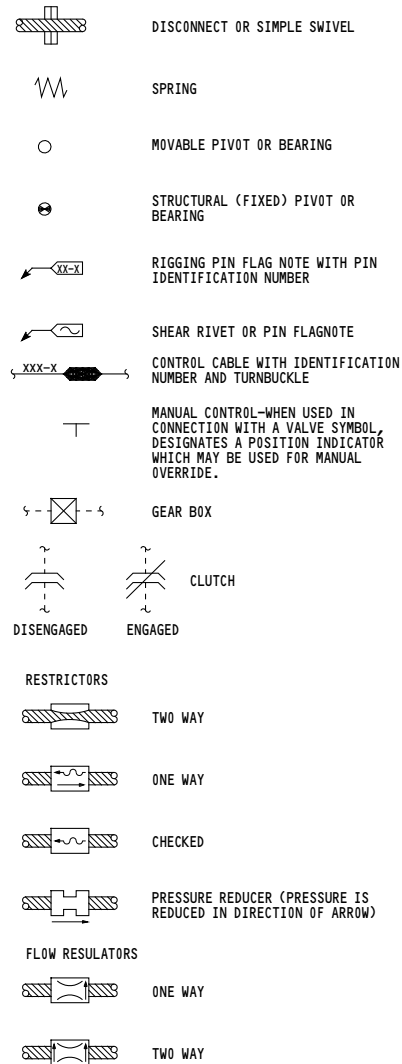
CH-SC-SU	Title
----------	-------

00-ALPHABETICAL INDEX

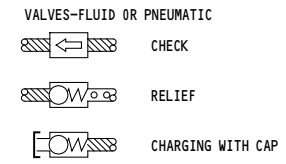
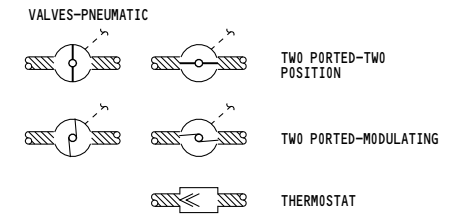
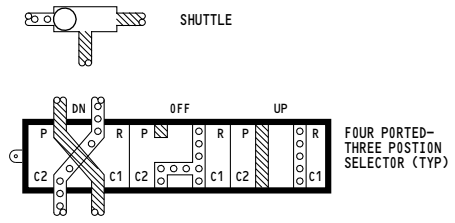
MECHANICAL SYMBOLS



MISCELLANEOUS MECHANICAL (CONT)



* VALVES ROTATE 90° CLOCKWISE TO OPEN WHEN ACTIVATED UNLESS INDICATED BY A COUNTER-CLOCKWISE ARROW



ALL	SYMBOLS - MECHANICAL
	D280A203

ELECTICAL OR ELECTRONIC SYMBOLS

AMPLIFIERS

NON-INVERTING:

INVERTING:

INTERGRATING:

DIFFERENTIAL:

CIRCUIT BREAKER

BUS NAME XX-XX-XX, AMP CXXX, CIRCUIT BREAKER TITLE (GXX), ALPHA NUMERIC LOCATION IDENTIFIER

PROXIMITY SWITCH

TARGET, RED, YEL, BLU

SYNCHRO

CDX (CONTROL DIFFERENTIAL TRANSMITTER), CT (CONTROL TRANSFORMER), CX (CONTROL TRANSMITTER), TDR (TORQUE DIFFERENTIAL RECEIVER), TDX (TORQUE DIFFERENTIAL TRANSMITTER), TR (TORQUE RECEIVER), TX (TORQUE TRANSMITTER), RS (RESOLVER)

THERMAL DEVICES

THERMAL SWITCH (SHOWN NORMALLY CLOSED), THERMAL RESISTOR

FLAGNOTES

- CUSTOMER ORIGINATED MATERIAL INCORPORATED INTO THE MANUAL AT CUSTOMER REQUEST (SEE INTRODUCTION PAGE 1).*
- THE SERVICE BUJETIN LISTED ADJACENT TO THE FLAGNOTE HAS BEEN INCORPORATED INTO THIS SCHEMATIC IN EITHER THE DUAL OR THE FINAL CONFIGURATION, ACORDING TO CUSTOMER REQUEST.*
- SEE THE SERVICE BUJETIN AND MODIFICATION INDEX FOR INCORPORATION DATES AND CONFIGURATION INFORMATION.

TIME DELAYS

IN-LINE TIME DELAY WITH DELAY IN SECONDS:

TIME DELAY RELAY COIL WITH DELAY IN SECONDS FOR PULL-IN OR DROP-OUT ACCORDING TO DIRECTION OF ARROW:

ELECTRONIC SWITCHES

SOLID STATE SWITCHES ARE SHOWN USING CONVENTIONAL SWITCHING SYMBOLGY:

THE ARROW INDICATES THAT THE PRESENCE OF THE DRIVE SIGNAL CAUSES THE NORMALLY CLOSED CONTACTS TO OPEN AND THE NORMALLY OPEN CONTACTS TO CLOSE

THIS SYMBOL MAY BE USED TO SHOW STABLE SWITCHING OF ONE INPUT TO TWO OUTPUTS WITH TWO INPUT COMMAND SIGNALS

THIS SYMBOL MAY BE USED TO SHOW STABLE SWITCHING OF TWO INPUTS TO ONE OUTPUT WITH TWO COMMAND SIGNALS

THIS SYMBOL MAY BE USED TO SHOW ALTERNATE ACTION SWITCHING WITH A SINGLE PULSE INPUT COMMAND. IT MAY ALSO BE REVERSED LEFT TO RIGHT IF REQUIRED TO SHOW THE SWITCHING FUNCTION

LRU COMPONENT/IDENTIFICATION

PANEL COMPONENT BORDER (NON-LRU):

LRU COMPONENT BORDER-LRU SHOWN COMPLETE:

LRU COMPONENT BORDER-LRU SHOWN INCOMPLETE (WITH REFERENCE TO HOME SCHEMATIC IN SAME CHAPTER/SECTION):

LRU COMPONENT BORDER-LRU SHOWN INTERFACING (WITH REFERENCE TO HOME SCHEMATIC IN DIFFERENT CHAPTER/SECTION):

PROVISIONAL LRU COMPONENT BORDERS:

LOGIC DIAGRAMS

ONE

GEAR DOWN, GEAR LOCKED, FLAPS LANDING RANGE, ALTITUDE<1000 FT, THRUST<CLIMB

TWO

GEAR DOWN, GEAR LOCKED, FLAPS LANDING RANGE, ALTITUDE<1000 FT, THRUST<CLIMB

WORD STATEMENT

WITH ALT LESS THAN 1000 FT THRUST LESS THAN CLIMB GND WILL BE APPLIED TO ACTIVATE HORN UNLESS FEAR IS DOWN & LOCKED AND FLAPS ARE IN LANDING RANGE

EQUIVALENT LOGIC FUNCTIONS

AND/NAND GATES	OR/NOR GATES	TRUTH TABLE		
		A	B	X
		1	1	1
		1	0	0
		0	1	0
		0	0	0
		1	1	0
		1	0	0
		0	1	0
		0	0	1
		1	1	1
		1	0	1
		0	1	1
		0	0	0
		1	1	0
		1	0	1
		0	1	1
		0	0	0
EXCLUSIVE OR GATE		1	1	0
		1	0	1
		0	1	1
		0	0	0

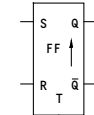
FLIP FLOPS

↑ RISING EDGE TRIGGERED

IF BOTH S & R GO HI SIMULTANEOUSLY. OUTPUT REAINS UNCHANGED. S/R FLIP FLOPS RETAIN PWR DOWN STATE IF NOT RESET AT PWR UP.

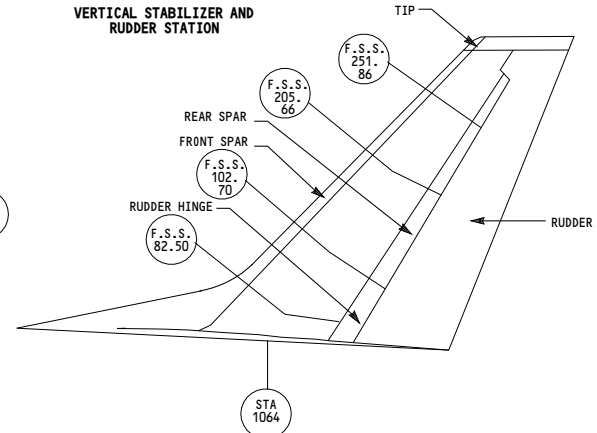
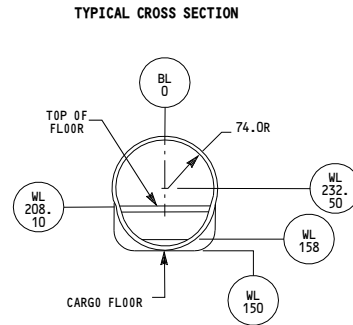
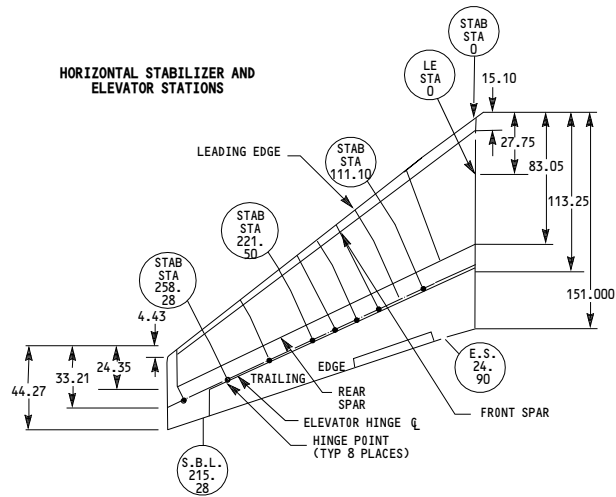


IF S GOES HI, Q=1 & Q̄=0
IF R GOES HI, Q=0 & Q̄=1

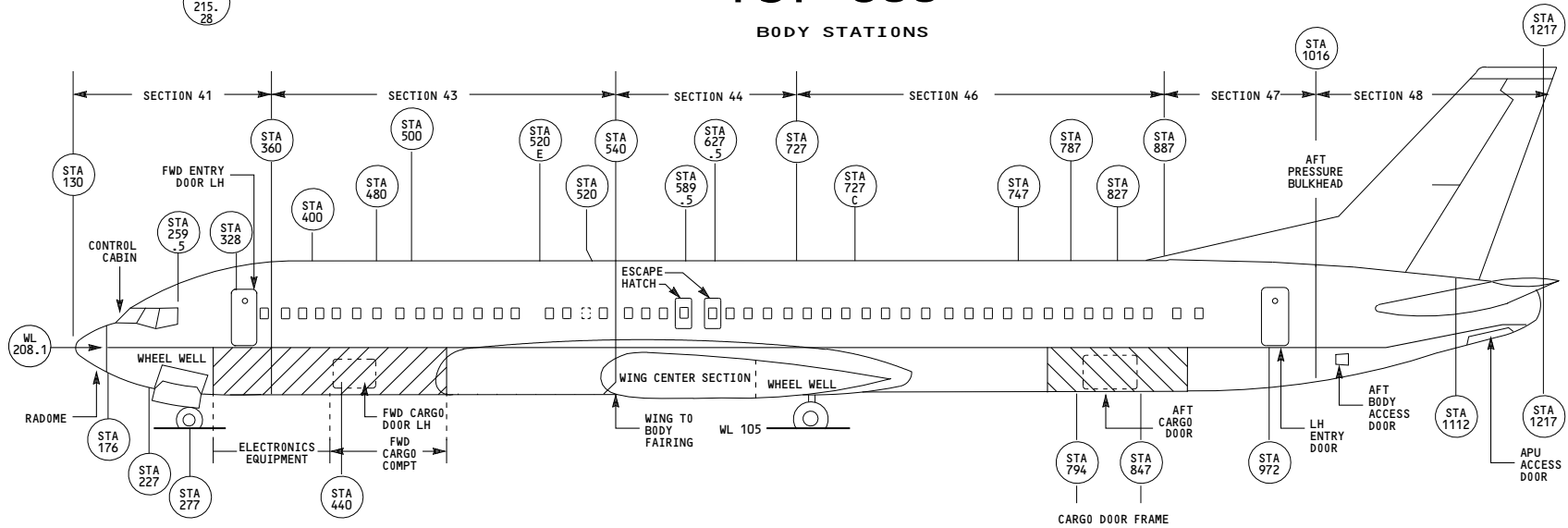


IF S GOES HI, Q=1 & Q̄=0
IF R GOES HI, Q=0 & Q̄=1
IF S=0 & R=0 & T GOES HI, Q & Q̄ WILL TOGGLE.

ALL	SYMBOLS - ELECTRICAL
	D280A203

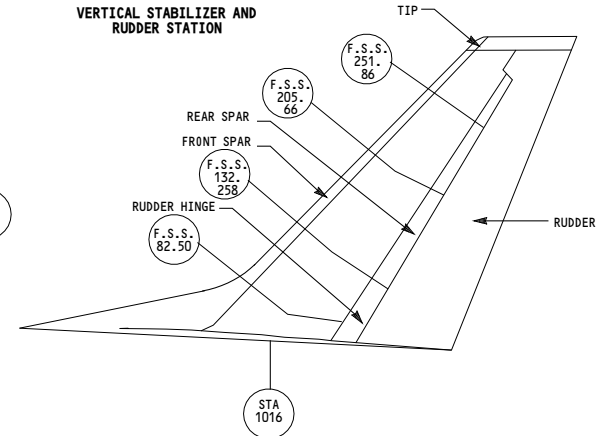
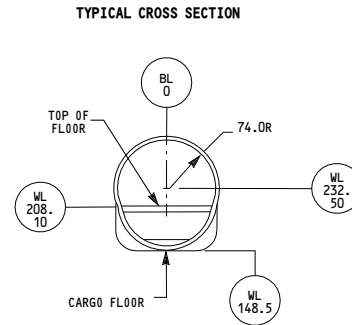
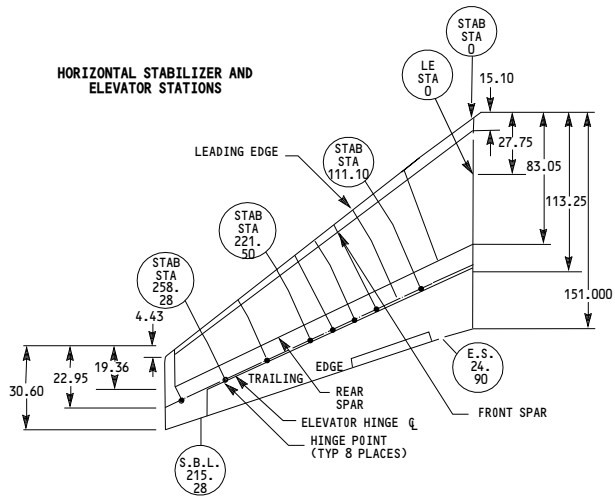


737-800
BODY STATIONS



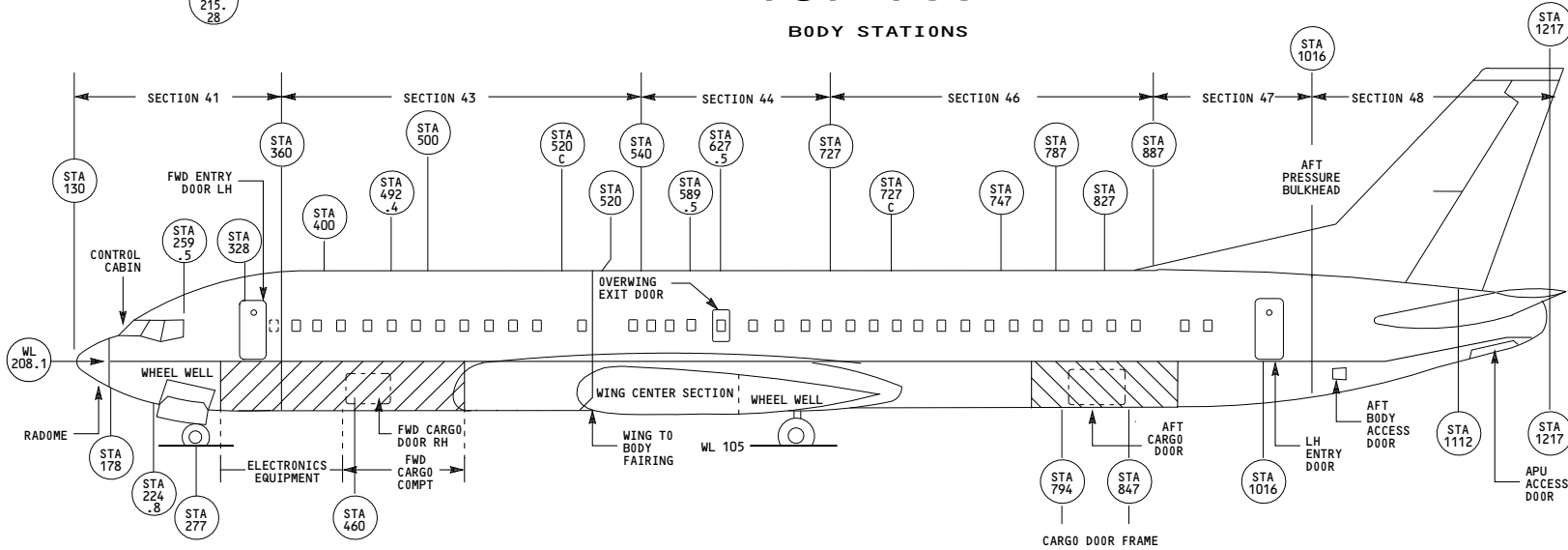
<p>YC001-YL430</p>	<p>AIRPLANE STATION BODY AND STABILIZER</p> <p>D280A203</p>
--------------------	--

00-06-21
Schem 1
Page 101
Feb 09/2009



737-700

BODY STATIONS



YM643-YM670

AIRPLANE STATION BODY AND STABILIZER

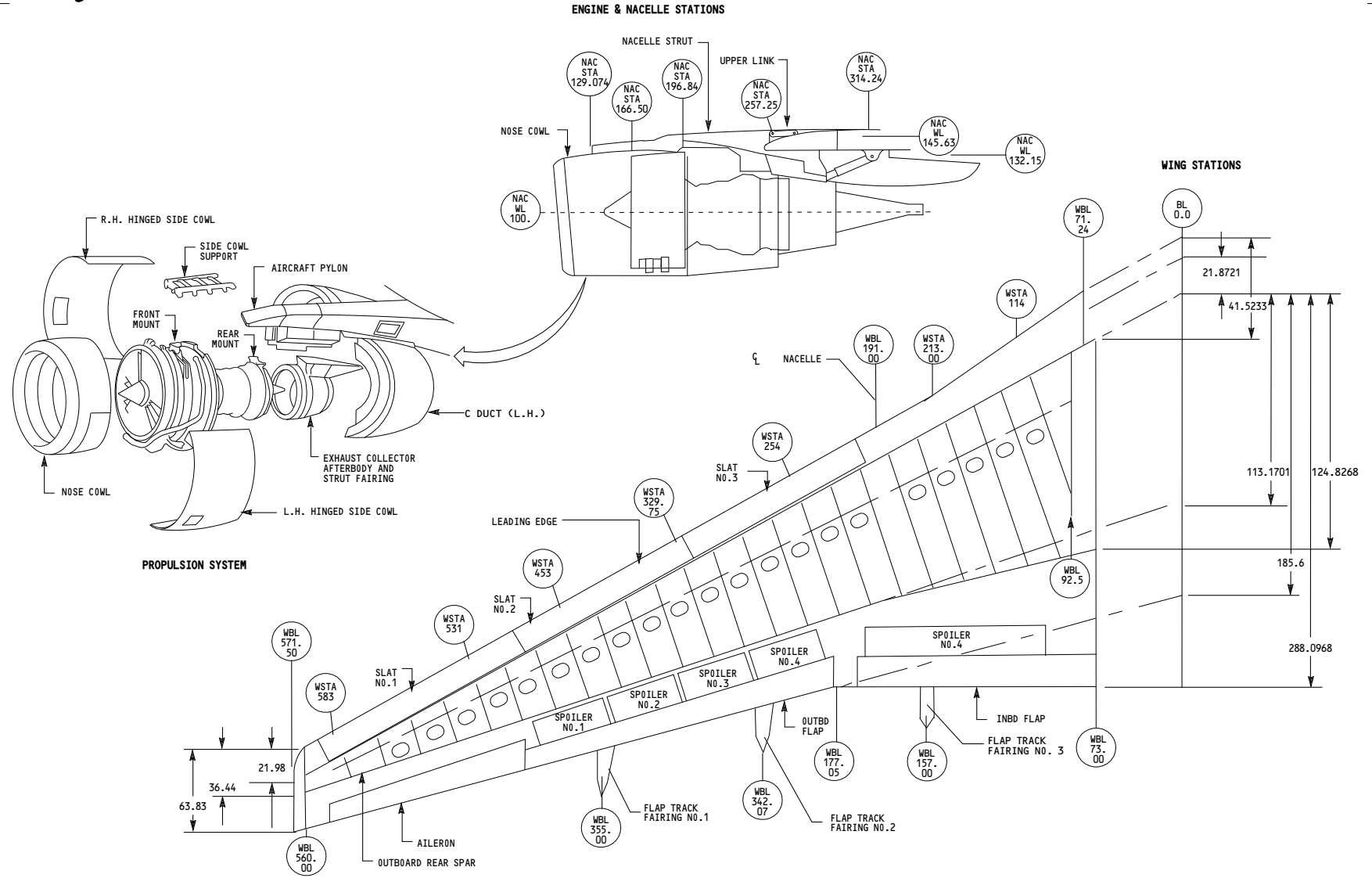
D280A203

00-06-21

Schem 1
Page 102

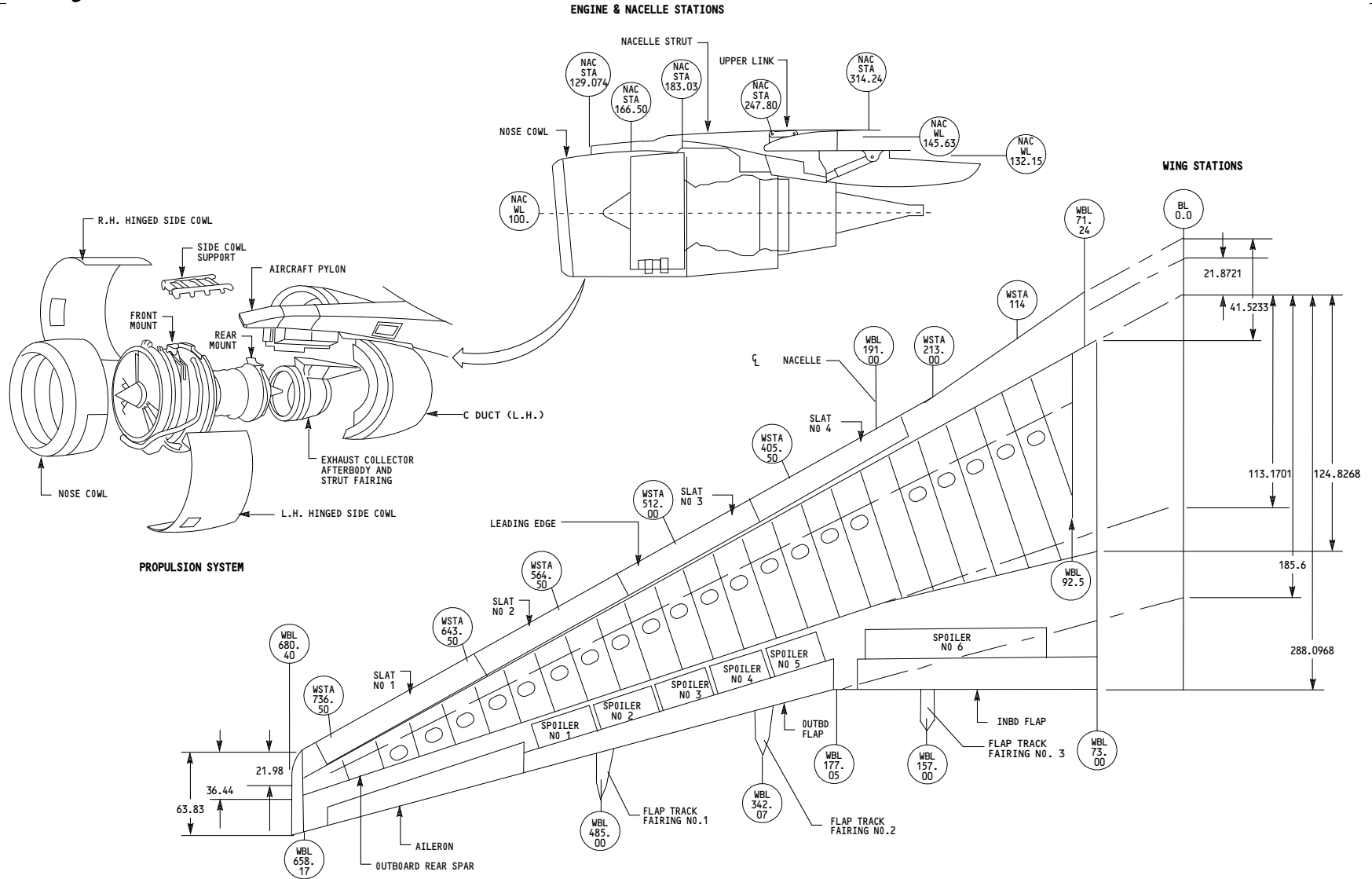
May 13/2008

1



<p>YC001-YL430, YM645-YM670</p>	<p>AIRPLANE STATION WING AND NACELLE</p> <p>D280A203</p>
---------------------------------	---

00-06-21
 Schem 2
 Page 101
 Feb 09/2009



YM643

**AIRPLANE STATION
WING AND NACELLE**

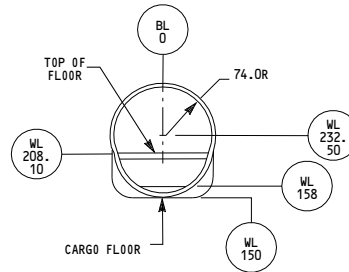
D280A203

00-06-21

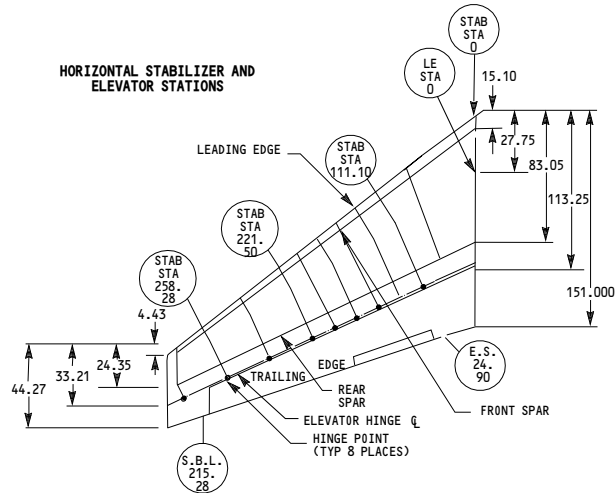
Schem 2
Page 102

May 13/2008

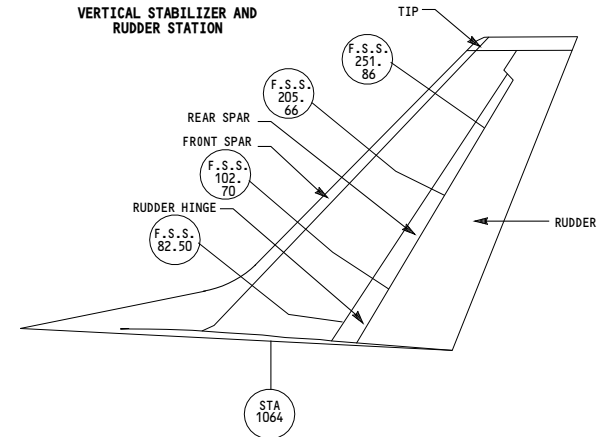
TYPICAL CROSS SECTION



HORIZONTAL STABILIZER AND ELEVATOR STATIONS



VERTICAL STABILIZER AND RUDDER STATION



YC001-YC050, YM643

**AIRPLANE STATION
WING AND NACELLE**

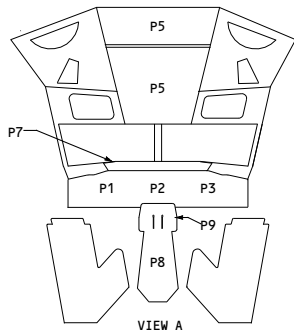
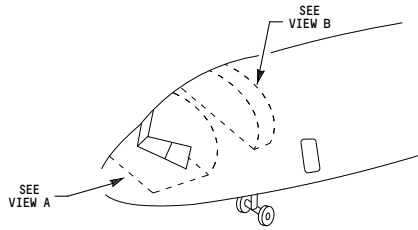
D280A203

00-06-21

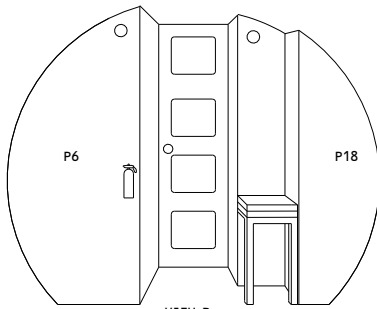
Schem 3
Page 101

May 13/2008

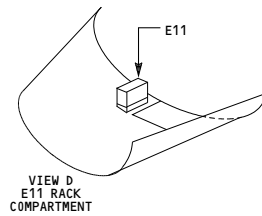
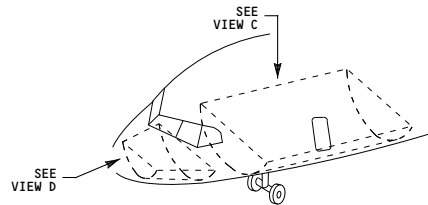
-B-
1



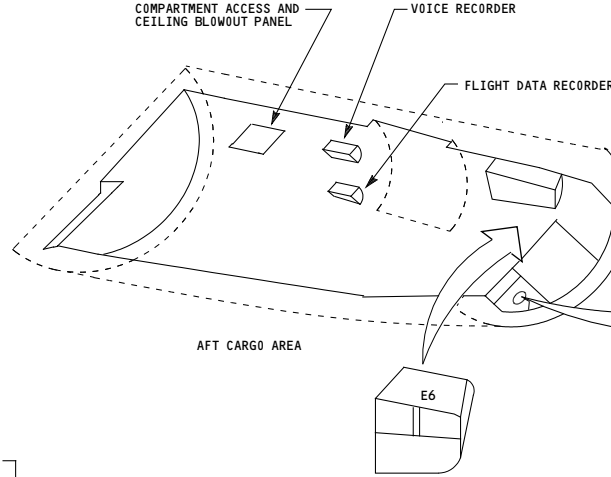
VIEW A
FRONT OF FLIGHT DECK
AREA PANEL LOCATION



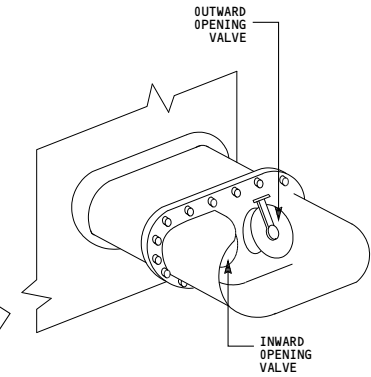
VIEW B
REAR OF FLIGHT DECK
AREA PANEL LOCATION



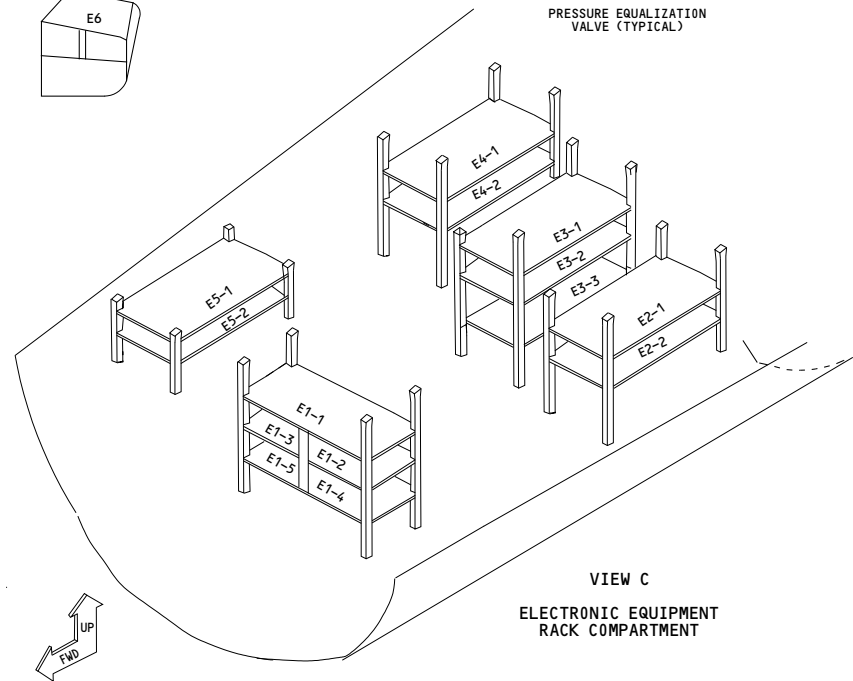
VIEW D
E11 RACK
COMPARTMENT



AFT CARGO AREA

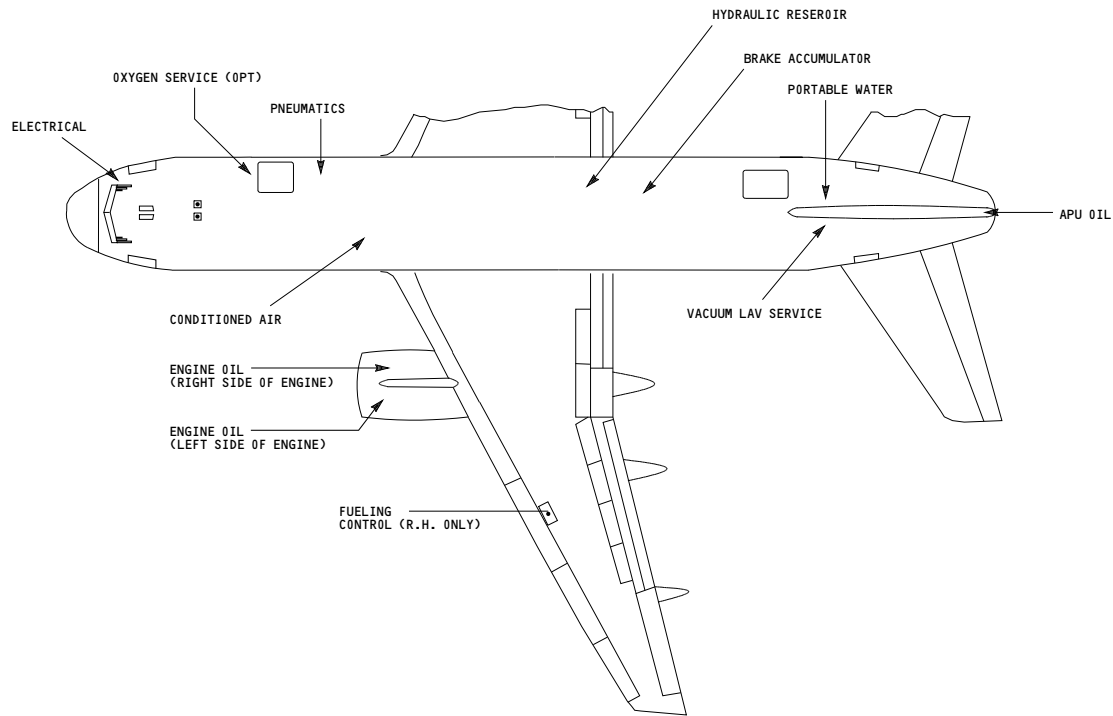


PRESSURE EQUALIZATION
VALVE (TYPICAL)

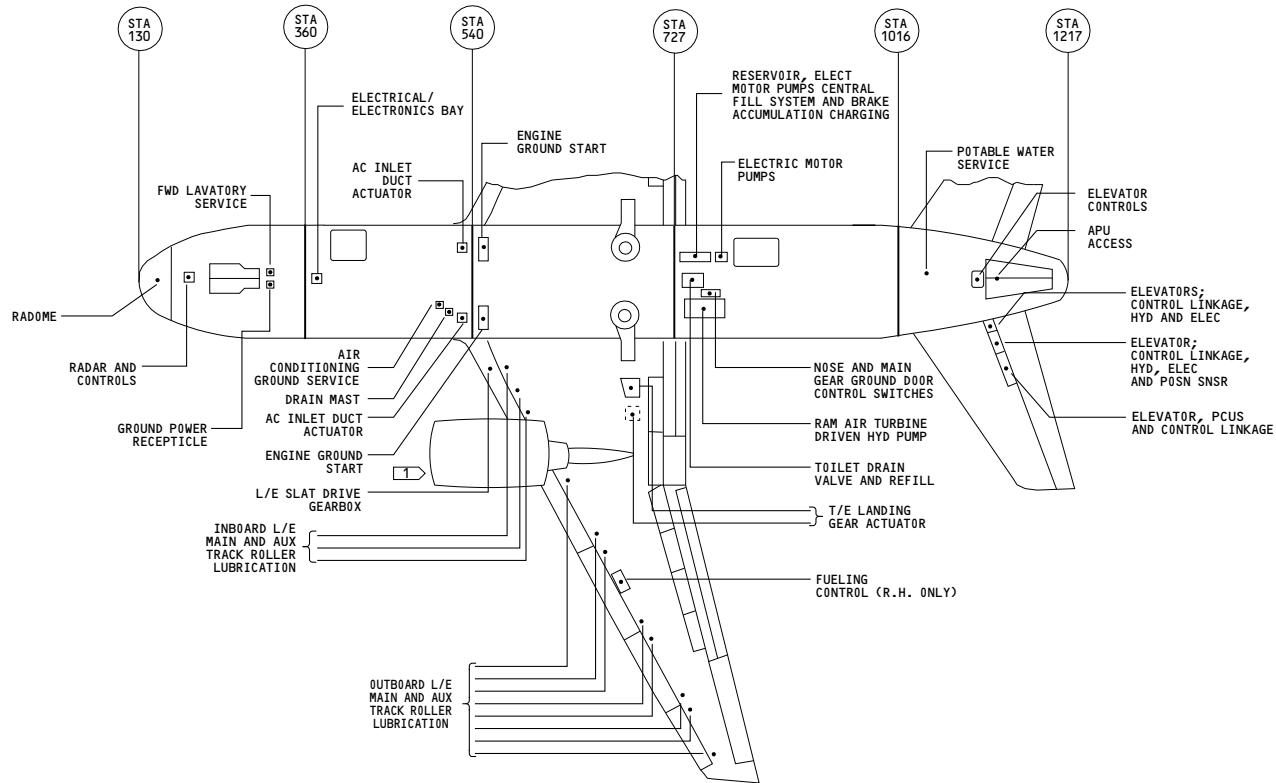


VIEW C
ELECTRONIC EQUIPMENT
RACK COMPARTMENT

ALL	<p>MAJOR EQUIPMENT CENTERS</p> <p>D280A203</p>
-----	---



YC015-YM649	GROUND SERVICE ACCESS PANELS D280A203
-------------	---



NOTE:

VIEW FROM BOTTOM LOOKING UP.

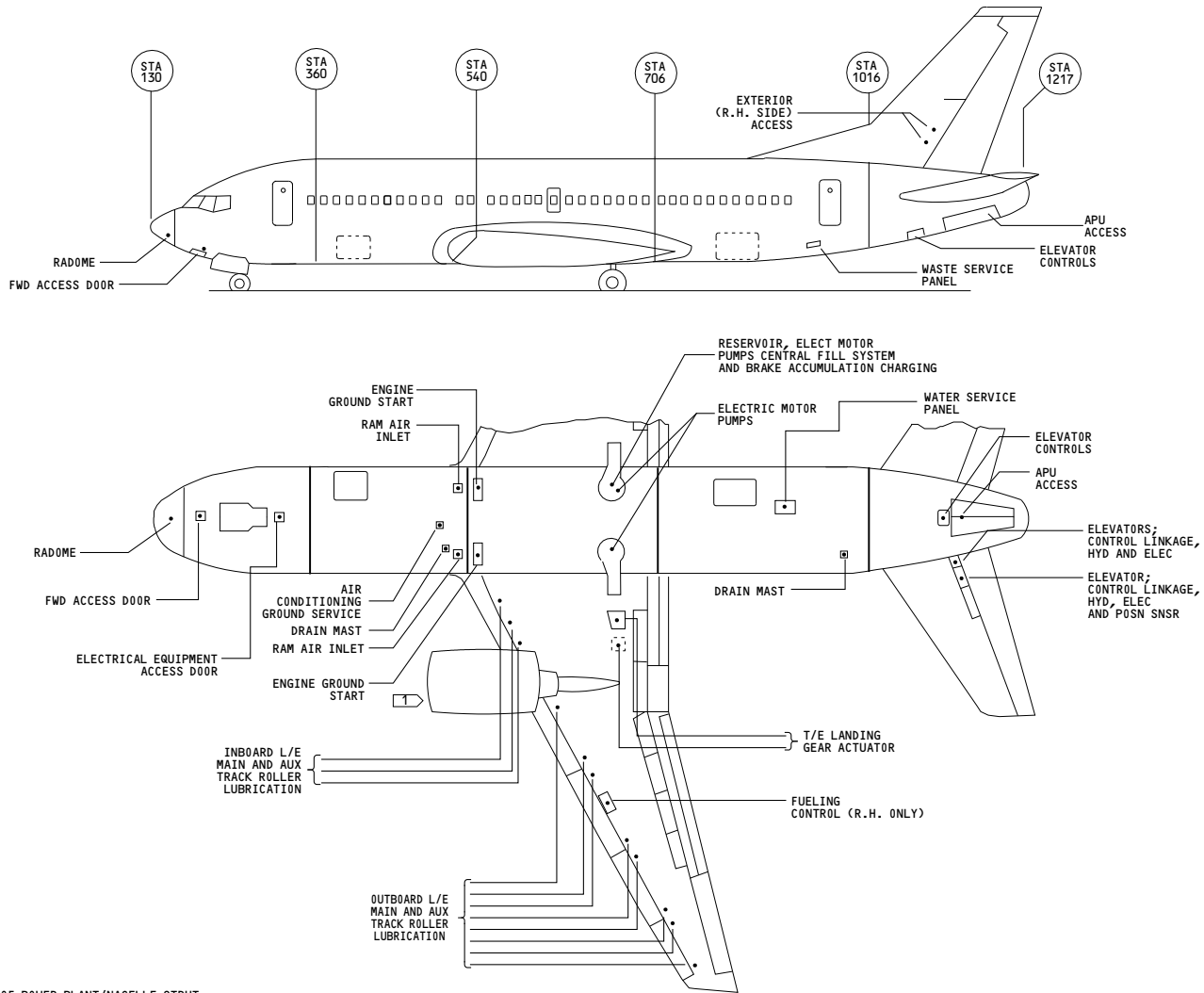
SEE 71-00-00 FOR VIEW OF POWER PLANT/NACELLE STRUT SERVICE ACCESS PANELS

<p>YC001-YL430</p>	<p align="center">GROUND SERVICE ACCESS PANELS</p> <p align="center">D280A203</p>
--------------------	--

00-12-00

Schem 1
Page 101

Feb 09/2009



NOTE:
 1 SEE 71-00-00 FOR VIEW OF POWER PLANT/NACELLE STRUT SERVICE ACCESS PANELS

YM643-YM670	<p align="center">GROUND SERVICE ACCESS PANELS</p> <p align="center">D280A203</p>
-------------	--

00-12-00

Schem 1
 Page 102

Jan 14/2008