



# **COMPONENT MAINTENANCE MANUAL WITH ILLUSTRATED PARTS LIST**

## **AFT PARTIAL UNDERBIN PASSENGER SERVICE UNIT ASSEMBLY**

### **PART NUMBER**

**417N3100–135SP, –136SP, –537SP, –538SP, –541SP,  
–542SP, –543SP, –544SP, –619SP, –620SP, –635SP,  
–636SP, –746SP, –747SP**

**BOEING PROPRIETARY, CONFIDENTIAL, AND/OR TRADE SECRET**

Copyright © 1995 The Boeing Company  
Unpublished Work - All Rights Reserved

Boeing claims copyright in each page of this document only to the extent that the page contains copyrightable subject matter. Boeing also claims copyright in this document as a compilation and/or collective work.

This document includes proprietary information owned by The Boeing Company and/or one or more third parties. Treatment of the document and the information it contains is governed by contract with Boeing. For more information, contact The Boeing Company, P.O. Box 3707, Seattle, Washington 98124.

Boeing, the Boeing signature, the Boeing symbol, 707, 717, 727, 737, 747, 757, 767, 777, 787, Dreamliner, BBJ, DC-8, DC-9, DC-10, KC-10, KDC-10, MD-10, MD-11, MD-80, MD-88, MD-90, P-8A, Poseidon and the Boeing livery are all trademarks owned by The Boeing Company; and no trademark license is granted in connection with this document unless provided in writing by Boeing.

PUBLISHED BY BOEING COMMERCIAL AIRPLANES GROUP, SEATTLE, WASHINGTON, USA  
A DIVISION OF THE BOEING COMPANY  
PAGE DATE: Jul 01/2009

**25-23-36**

Page 1  
Jul 01/2009



## COMPONENT MAINTENANCE MANUAL

Revision No. 11  
Jul 01/2009

To: All holders of AFT PARTIAL UNDERBIN PASSENGER SERVICE UNIT ASSEMBLY 25-23-36.

Attached is the current revision to this COMPONENT MAINTENANCE MANUAL

The COMPONENT MAINTENANCE MANUAL is furnished either as a printed manual, on microfilm, or digital products, or any combination of the three. This revision replaces all previous microfilm cartridges or digital products. All microfilm and digital products are reissued with all obsolete data deleted and all updated pages added.

For printed manuals, changes are indicated on the List of Effective Pages (LEP). The pages which are revised will be identified on the LEP by an R (Revised), A (Added), O (Overflow, i.e. changes to the document structure and/or page layout), or D (Deleted). Each page in the LEP is identified by Chapter-Section-Subject number, page number and page date.

Pages replaced or made obsolete by this revision should be removed and destroyed.

### ATTENTION

IF YOU RECEIVE PRINTED REVISIONS, PLEASE VERIFY THAT YOU HAVE RECEIVED AND FILED THE PREVIOUS REVISION. BOEING MUST BE NOTIFIED WITHIN 30 DAYS IF YOU HAVE NOT RECEIVED THE PREVIOUS REVISION. REQUESTS FOR REVISIONS OTHER THAN THE PREVIOUS REVISION WILL REQUIRE A COMPLETE MANUAL REPRINT SUBJECT TO REPRINT CHARGES SHOWN IN THE DATA AND SERVICES CATALOG.

**25-23-36**  
TRANSMITTAL LETTER  
Page 1  
Jul 01/2009



## COMPONENT MAINTENANCE MANUAL

Location of Change

Description of Change

NO HIGHLIGHTS

**25-23-36**

HIGHLIGHTS

Page 1

Jul 01/2009



## COMPONENT MAINTENANCE MANUAL

| Subject/Page                           | Date        | Subject/Page                                    | Date        | Subject/Page                           | Date        |
|--|-------------|---|-------------|--|-------------|
| TITLE PAGE                             |             | 25-23-36 CLEANING (cont)                        |             | 25-23-36 ILLUSTRATED PARTS LIST (cont) |             |
| O 1                                    | Jul 01/2009 | 402   | BLANK       | 1013                                   | Jul 01/2007 |
| 2                                      | BLANK       | 25-23-36 CHECK                                  |             | 1014                                   | Jul 01/2007 |
| 25-23-36 TRANSMITTAL LETTER            |             | 501   | Jul 01/2007 | 1015                                   | Jul 01/2007 |
| O 1                                    | Jul 01/2009 | 502   | BLANK       | 1016                                   | Jul 01/2007 |
| 2                                      | BLANK       | 25-23-36 REPAIR - GENERAL                       |             | 1017                                   | Jul 01/2007 |
| 25-23-36 HIGHLIGHTS                    |             | 601   | Jul 01/2007 | 1018                                   | Jul 01/2007 |
| O 1                                    | Jul 01/2009 | 602   | BLANK       | 1019                                   | Jul 01/2007 |
| 2                                      | BLANK       | 25-23-36 REPAIR 2-1                             |             | 1020                                   | Jul 01/2007 |
| 25-23-36 EFFECTIVE PAGES               |             | 601   | Mar 01/2008 | 1021                                   | Jul 01/2007 |
| 1                                      | Jul 01/2009 | 602   | BLANK       | 1022                                   | Jul 01/2007 |
| 2                                      | BLANK       | 25-23-36 REPAIR 3-1                             |             | 1023                                   | Jul 01/2007 |
| 25-23-36 CONTENTS                      |             | 601   | Jul 01/2007 | 1024                                   | Jul 01/2007 |
| 1                                      | Jul 01/2007 | 602   | BLANK       | 1025                                   | Jul 01/2007 |
| 2                                      | BLANK       | 25-23-36 REPAIR 4-1                             |             | 1026                                   | Jul 01/2007 |
| 25-23-36 TR AND SB RECORD              |             | 601   | Jul 01/2007 | 1027                                   | Jul 01/2007 |
| 1                                      | Jul 01/2007 | 602   | Jul 01/2007 | 1028                                   | Jul 01/2007 |
| 2                                      | BLANK       | 25-23-36 ASSEMBLY                               |             | 1029                                   | Jul 01/2007 |
| 25-23-36 REVISION RECORD               |             | 701   | Jul 01/2007 | 1030                                   | Jul 01/2007 |
| 1                                      | Jul 01/2007 | 702   | BLANK       | 1031                                   | Jul 01/2007 |
| 2                                      | Jul 01/2007 | 25-23-36 FITS AND CLEARANCES                    |             | 1032                                   | Jul 01/2007 |
| 25-23-36 RECORD OF TEMPORARY REVISIONS |             | 801   | Jul 01/2007 | 1033                                   | Jul 01/2007 |
| 1                                      | Jul 01/2007 | 802   | BLANK       | 1034                                   | Jul 01/2007 |
| 2                                      | Jul 01/2007 | 25-23-36 SPECIAL TOOLS, FIXTURES, AND EQUIPMENT |             | 1035                                   | Jul 01/2007 |
| 25-23-36 INTRODUCTION                  |             | 901   | Jul 01/2007 | 1036                                   | Jul 01/2007 |
| 1                                      | Mar 01/2009 | 902   | BLANK       | 1037                                   | Jul 01/2007 |
| 2                                      | BLANK       | 25-23-36 ILLUSTRATED PARTS LIST                 |             | 1038                                   | Jul 01/2007 |
| 25-23-36 DESCRIPTION AND OPERATION     |             | 1001  | Nov 01/2008 | 1039                                   | Jul 01/2007 |
| 1                                      | Jul 01/2007 | 1002  | Jul 01/2007 | 1040                                   | Jul 01/2007 |
| 2                                      | BLANK       | 1003  | Jul 01/2007 | 1041                                   | Jul 01/2007 |
| 25-23-36 TESTING AND FAULT ISOLATION   |             | 1004  | Jul 01/2007 | 1042                                   | Jul 01/2007 |
| 101                                    | Jul 01/2007 | 1005  | Jul 01/2007 |  |             |
| 102                                    | Jul 01/2007 | 1006  | Jul 01/2007 |  |             |
| 25-23-36 DISASSEMBLY                   |             | 1007  | Jul 01/2007 |  |             |
| 301                                    | Jul 01/2007 | 1008  | Jul 01/2007 |  |             |
| 302                                    | BLANK       | 1009  | Jul 01/2007 |  |             |
| 25-23-36 CLEANING                      |             | 1010  | Jul 01/2007 |  |             |
| 401                                    | Jul 01/2007 | 1011  | Jul 01/2007 |  |             |
|  |             | 1012  | Jul 01/2007 |  |             |

A = Added, R = Revised, D = Deleted, O = Overflow

# 25-23-36

EFFECTIVE PAGES

Page 1

Jul 01/2009

**COMPONENT MAINTENANCE MANUAL****TABLE OF CONTENTS**

| <b><u>Paragraph Title</u></b>  | <b><u>Page</u></b> |
|--|--------------------|
| AFT PARTIAL PASSENGER SERVICE UNIT ASSEMBLY -<br>DESCRIPTION AND OPERATION | 1                  |
| TESTING AND FAULT ISOLATION  | 101                |
| DISASSEMBLY  | 301                |
| CLEANING   | 401                |
| CHECK  | 501                |
| REPAIR   | 601                |
| ASSEMBLY   | 701                |
| FITS AND CLEARANCES  | (Not Applicable)   |
| SPECIAL TOOLS, FIXTURES, AND EQUIPMENT                                     | 901                |
| ILLUSTRATED PARTS LIST   | 1001               |

**25-23-36**

CONTENTS

Page 1

Jul 01/2007



**COMPONENT MAINTENANCE MANUAL**

**TEMPORARY REVISION AND SERVICE BULLETIN RECORD**

| <b>BOEING SERVICE BULLETIN</b> | <b>BOEING TEMPORARY REVISION</b> | <b>OTHER DIRECTIVE</b> | <b>DATE OF INCORPORATION INTO MANUAL</b> |
|--------------------------------|----------------------------------|------------------------|--|
|                                |                                  | PRR 33195-3            | JUL 01/90                                |
|                                |                                  | PRR 54533 (757)        | APR 01/93                                |
|                                |                                  | PRR 35133 (737)        | APR 01/93                                |
|                                |                                  | PRR 33195-5            | JUN 01/96                                |
|                                |                                  | PRR 34021              | JUN 01/96                                |
|                                |                                  | PRR 54840-93           | JUL 01/01                                |

**25-23-36**

TR AND SB RECORD

Page 1

Jul 01/2007













## COMPONENT MAINTENANCE MANUAL

### INTRODUCTION

#### 1. General

- A. The instructions in this manual supply the data necessary to do the maintenance functions together with the test, fault isolation, repair, and replacement of the defective parts.
- B. This manual is divided into different parts:
  - (1) Title Page
  - (2) Transmittal Letter
  - (3) Highlights
  - (4) List of Effective Pages
  - (5) Table of Contents
  - (6) Temporary Revision & Service Bulletin Record
  - (7) Record of Revisions
  - (8) Record of Temporary Revisions
  - (9) Introduction
  - (10) Procedures & IPL Sections
- C. Components that can be repaired have a different repair number for each specified repair. To find the repair number location of a component, look in the Repair-General procedure at the beginning of the REPAIR section. The Repair-General procedure also has an explanation of the True Position Dimension symbols used.
- D. All dimensions, measures, quantities and weights included are in English units. When metric equivalents are given they will be in the parentheses that follow the English units.
- E. The introduction to the Illustrated Parts List (IPL) shows how the IPL data is used.
- F. Design changes, optional parts, configuration differences and Service Bulletin modifications may cause different part numbers. These part numbers are identified in the IPL with an alphabetical letter which is added to the end of the basic item number. This new item number is referred to as an alpha-variant. Throughout the manual, IPL basic item number references also apply to alpha-variants unless shown differently.
- G. The tool reference numbers found in the individual procedures and in the Special Tools, Fixtures, and Equipment section are used to identify if a tool is a standard tool (STD-XXXX), a commercial tool (COM-XXXX), or a Special Tool (SPL-XXXX). This reference number is also used to distinguish between tools with similar names in the same procedure. These reference numbers are for use in the documentation only. They are not to be used for ordering tools.

# 25-23-36

INTRODUCTION

Page 1

Mar 01/2009



## COMPONENT MAINTENANCE MANUAL

### AFT PARTIAL PASSENGER SERVICE UNIT ASSEMBLY - DESCRIPTION AND OPERATION

#### **1. Description and Operation**

A. The aft partial PSU (Passenger Service Unit) assembly has reading lights, an attendant call switch and support hardware. Some of the assemblies could have gasper air.

#### **2. Leading Particulars (approximate)**

- A. Length: 23 inches
- B. Width: 12 inches
- C. Height: 3 inches
- D. Weight: 3 pounds

# 25-23-36

DESCRIPTION AND OPERATION

Page 1

Jul 01/2007



## COMPONENT MAINTENANCE MANUAL

### TESTING AND FAULT ISOLATION

#### 1. General

- A. This procedure has the data necessary to do a test of the aft. partial underbin passenger service unit assembly after an overhaul or for fault isolation.

#### 2. Test Equipment

**NOTE:** Equivalent substitute may be used.

- A. AC Power Supply - power supply, STD-5467, variable output, controllable to +28 volts
- B. DC Power Supply - power supply, STD-4539, variable output, controllable to +28 volts
- C. Audio Signal Generator - 400 Hz signal (HP 205AG or equivalent)
- D. Light bulbs - 28v dc, 40mA lamp, COM-5826 (2 required)

#### 3. Reading Lights and Switches Test (TESTING AND FAULT ISOLATION, Figure 101)

- A. Apply 28v ac to pin 6 and ground to pin 8.
- B. Push the reading light switches and make sure the related reading lights come on.
- C. Remove 28v ac from pin 6 and ground from pin 8.

#### 4. Attendant Call Test (TESTING AND FAULT ISOLATION, Figure 101)

**NOTE:** Do this attendant call test with call select switch in position 1, then position 2.

- A. Connect light bulb one (1) between pins 2 and 10. Connect bulb two (2) between pins 4 and 10 for the test with call select switch in position 1. Connect this bulb two (2) between pins 3 and 10 for the test when call select switch is in position 2.
- B. Apply 28v dc to pin 5 and ground to pin 10.
- C. Push the call switch and make sure the switch light and both external bulbs come on.
- D. Release the call switch and make sure bulb one (1) goes out, but the bulb two (2) stays lit.
- E. Push the call switch again and make sure the switch light and bulb two (2) go out and that bulb one (1) does not come back on.
- F. Remove 28v ac from pin 5 and the ground from pin 10. Remove both external bulbs.

#### 5. Information Sign Test (TESTING AND FAULT ISOLATION, Figure 101)

- A. Apply 28v ac to pin 1 and ground to pin 8. Make sure the FASTEN SEAT BELT sign lights come on.
- B. Remove 28v ac from pin 1 and apply it to pin 7. Make sure the NO SMOKING sign lights.
- C. Remove 28v ac from pin 7 and the ground from pin 8.

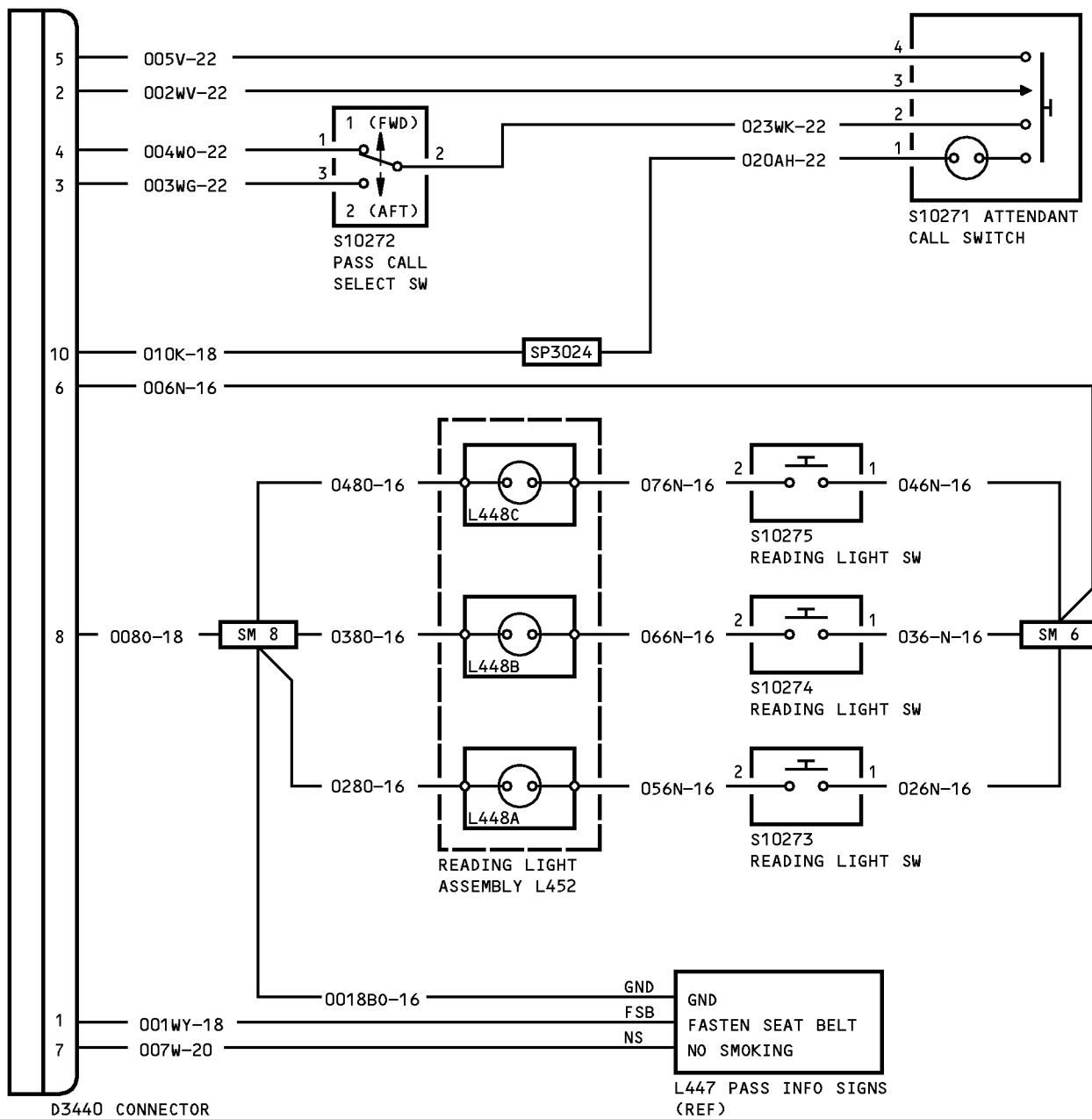
# 25-23-36

TESTING AND FAULT ISOLATION

Page 101

Jul 01/2007

COMPONENT MAINTENANCE MANUAL



Schematic Diagram (Typical)  
Figure 101

**25-23-36**

TESTING AND FAULT ISOLATION

Page 102

Jul 01/2007



## COMPONENT MAINTENANCE MANUAL

### DISASSEMBLY

#### 1. General

- A. This procedure has the data to disassemble the aft partial underbin passenger service unit assembly.
- B. Disassemble this component only as necessary to complete fault isolation, determine the serviceability of parts, perform required repairs, and restore the unit to serviceable condition.

#### 2. Disassembly

**CAUTION:** SOME PARTS OF THIS ASSEMBLY CAN BE SEEN FROM THE CABIN INTERIOR. BE CAREFUL NOT TO DAMAGE SURFACES THE PASSENGERS WILL SEE.

- A. Use standard industry practices.

# 25-23-36

DISASSEMBLY

Page 301

Jul 01/2007



## COMPONENT MAINTENANCE MANUAL

### CLEANING

#### 1. General

- A. This procedure has the data necessary to clean the aft partial underbin passenger service unit assembly.
- B. Refer to the Standard Overhaul Practices Manual (SOPM) for the SOPM subjects identified in this procedure.

#### 2. Cleaning

**CAUTION:** USE ONLY THE SPECIFIED LISTED CLEANING MATERIALS. OTHER MATERIALS COULD CAUSE SUDDEN BUT NOT VISIBLE DAMAGE.

##### 2. A. References

| Reference     | Title                       |
|---------------|-----------------------------|
| SOPM 20-30-03 | GENERAL CLEANING PROCEDURES |

##### B. Procedure

- (1) Clean all decorative plastic parts by Cleaning of Interior Painted and Plastic Parts in SOPM 20-30-03.

# 25-23-36

CLEANING  
Page 401  
Jul 01/2007





## COMPONENT MAINTENANCE MANUAL

### CHECK

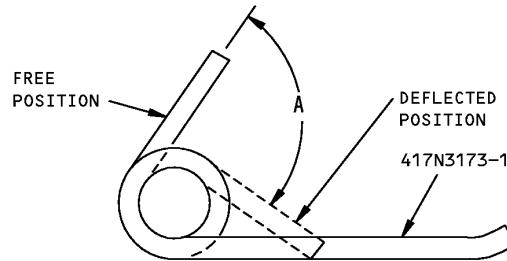
#### 1. General

A. This procedure has the data necessary to find defects in the material of the specified parts.

#### 2. Check

A. Examine all parts for defects by standard industry practices.

B. Make a test of the spring per CHECK, Figure 501.



| DEFLECTION<br>ANGLE A | MOMENT<br>LB-IN |
|-----------------------|-----------------|
| 50°                   | 0.77<br>0.63    |
| 90°                   | 1.65<br>1.35    |

417N3173-1 Spring Check  
Figure 501

# 25-23-36

CHECK  
Page 501  
Jul 01/2007



## COMPONENT MAINTENANCE MANUAL

### REPAIR

#### 1. Content

A. Repair, refinish, and replacement procedures are included in separate repair sections as follows:

**Table 601:**

| <b>P/N</b> | <b>NAME</b>                  | <b>REPAIR</b> |
|------------|------------------------------|---------------|
| - - -      | MISCELLANEOUS PARTS REFINISH | 2-1           |
| 417N3191-1 | LANYARD REPLACEMENT          | 3-1           |
| 417N3180-1 | CLAMP ASSEMBLY REPLACEMENT   | 4-1           |

#### 2. Standard Practices

A. Refer to the following standard practices, as applicable for details of procedures in individual repairs.

- (1) SOPM 20-30-02 Stripping of Protective Finishes
- (2) SOPM 20-41-01 Decoding Table for Boeing Finish Codes
- (3) SOPM 20-42-05 Bright Cadmium Plating
- (4) SOPM 20-43-01 Chromic Acid Anodizing
- (5) SOPM 20-50-12 Application of Adhesives
- (6) SOPM 20-60-02 Finishing Materials

#### 3. Materials

**NOTE:** Equivalent substitutes can be used.

A. Primer – primer, C00259, BMS 10-11, Type 1 (SOPM 20-60-02)

# 25-23-36

REPAIR - GENERAL

Page 601

Jul 01/2007



## COMPONENT MAINTENANCE MANUAL

### MISCELLANEOUS PARTS REFINISH - REPAIR 2-1

#### 1. General

- A. This procedure has the data necessary to refinish the parts which are not given in the specified repairs.
- B. Refer to REPAIR-GENERAL, Paragraph 2. for the Standard Overhaul Practices Manual (SOPM) subjects identified in this procedure.
- C. Refer to REPAIR-GENERAL, Paragraph 3. for the description of the Material codes identified in this procedure.

#### 2. Repair

- A. Repair of these parts is only replacement of the original finish.

**Table 601:** Refinish Details

| NAME AND PART NUMBER   | MATERIAL            | FINISH   |
|--|---------------------|--|
| Springs 417N3173-1   | Music Wire QQ-W-470 | Cadmium plate (0.0002 to 0.0004 inch) (F-15.02).                   |
| Angle Assy 417N3122-107, -108, -71<br>Bracket Assy 417N3122-60, -112<br>Stiffeners 417N3121-17, -18, -117, -118, -121, -122, -3, -4, -94<br>Plunger 65-85905-4 | Al alloy            | Chemical treat (colored film) (F-17.07).                           |
| Link 65-85902<br>Body 417N3183-1   | Al alloy            | Chromic acid anodize (F-2.26).                                     |
| Angles 417N3122-14, -107, -108<br>Brackets 417N3122-1, -3, -4  | Al alloy            | Chemical treat (colored film) and apply primer, C00259 (F-18.06).  |
| Bracket 417N3102-1   | Al alloy            | Chromic acid anodize (F-17.04) and apply primer, C00259 (F-20.02). |
| Bracket 417N3102-1   | Al alloy            | Chromic acid anodize and apply primer, C00259 (F-18.13).           |

# 25-23-36

REPAIR 2-1

Page 601

Mar 01/2008



## COMPONENT MAINTENANCE MANUAL

### LANYARD REPLACEMENT - REPAIR 3-1

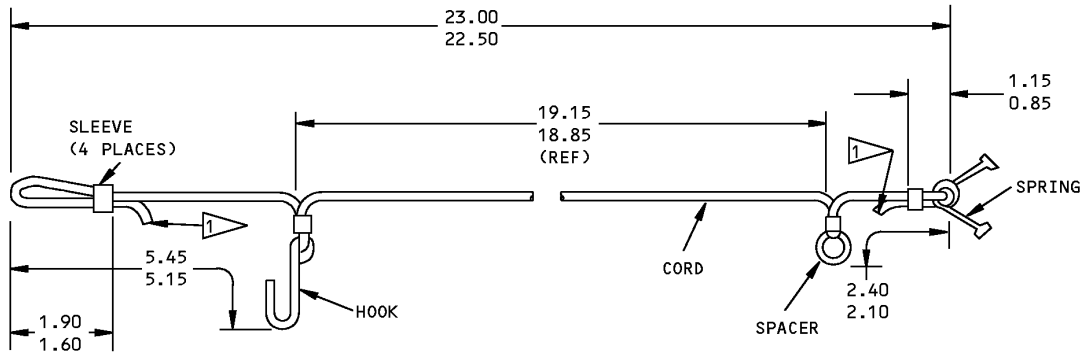
417N3191-1

#### 1. General

- A. This repair gives the data that is necessary to refinish the lanyard assembly.
- B. Refer to REPAIR-GENERAL, Paragraph 2. for the Standard Overhaul Practices Manual (SOPM) subjects identified in this procedure.
- C. Refer to REPAIR-GENERAL, Paragraph 3. for the description of the Material codes identified in this procedure.
- D. Refer to IPL Figure 1 as necessary.

#### 2. Lanyard Replacement (REPAIR 3-1, Figure 601)

- A. Attach spring 65C16899-6, spacer NAS43DD4-5, and hook 10-61790-1 and crimp sleeves (GSC219, GSC205) to cord 417N3190-3 as shown.
- B. Make a loop in the end of cord opposite spring as shown and crimp sleeve.
- C. Heat seal each end of the cord.



1 HEAT SEAL FREE ENDS OF CORD

ALL DIMENSIONS ARE IN INCHES  
ALL ITEM NUMBERS REFER TO IPL FIG. 1

417N3190-1

Lanyard Replacement  
Figure 601

# 25-23-36

REPAIR 3-1  
Page 601  
Jul 01/2007



## COMPONENT MAINTENANCE MANUAL

### CLAMP ASSEMBLY REPLACEMENT - REPAIR 4-1

417N3180-1

#### 1. General

- A. This repair gives the data that is necessary to refinish the clamp assembly.
- B. Refer to REPAIR-GENERAL, Paragraph 2. for the Standard Overhaul Practices Manual (SOPM) subjects identified in this procedure.
- C. Refer to REPAIR-GENERAL, Paragraph 3. for the description of the Material codes identified in this procedure.
- D. Refer to IPL Figure 1 as necessary.

#### 2. Parts Replacement (REPAIR 4-1, Figure 601)

**CAUTION:** THE FACEPLATE CAN BE SEEN FROM THE CABIN INTERIOR. BE CAREFUL NOT TO DAMAGE SURFACES THE PASSENGERS WILL SEE.

- A. Remove retainer (6100-12), rivet (BACR15BB4D10), and clamp (417N3180-1).
- B. Spring replacement.
  - (1) Remove plunger spring (1), and plunger body.
  - (2) Remove pins and rocker link.
  - (3) Remove spring plungers and springs (2).
  - (4) Put rocker link into clamp body. Put pin (1) through clamp body and slot in rocker link.
  - (5) Put springs (2) and spring plungers into clamp body. Turn the rocker link until it touches the spring plungers.
  - (6) Align the holes in the rocker link, clamp body and put in pin (2).
  - (7) Put spring (1) and plunger into clamp body. Push the plunger body onto the plunger then ball-stake plunger body to plunger (location optional).
- C. Attach the clamp assembly to the frame assembly with rivet (BACR15BB4D10) and retainer (6100-12).

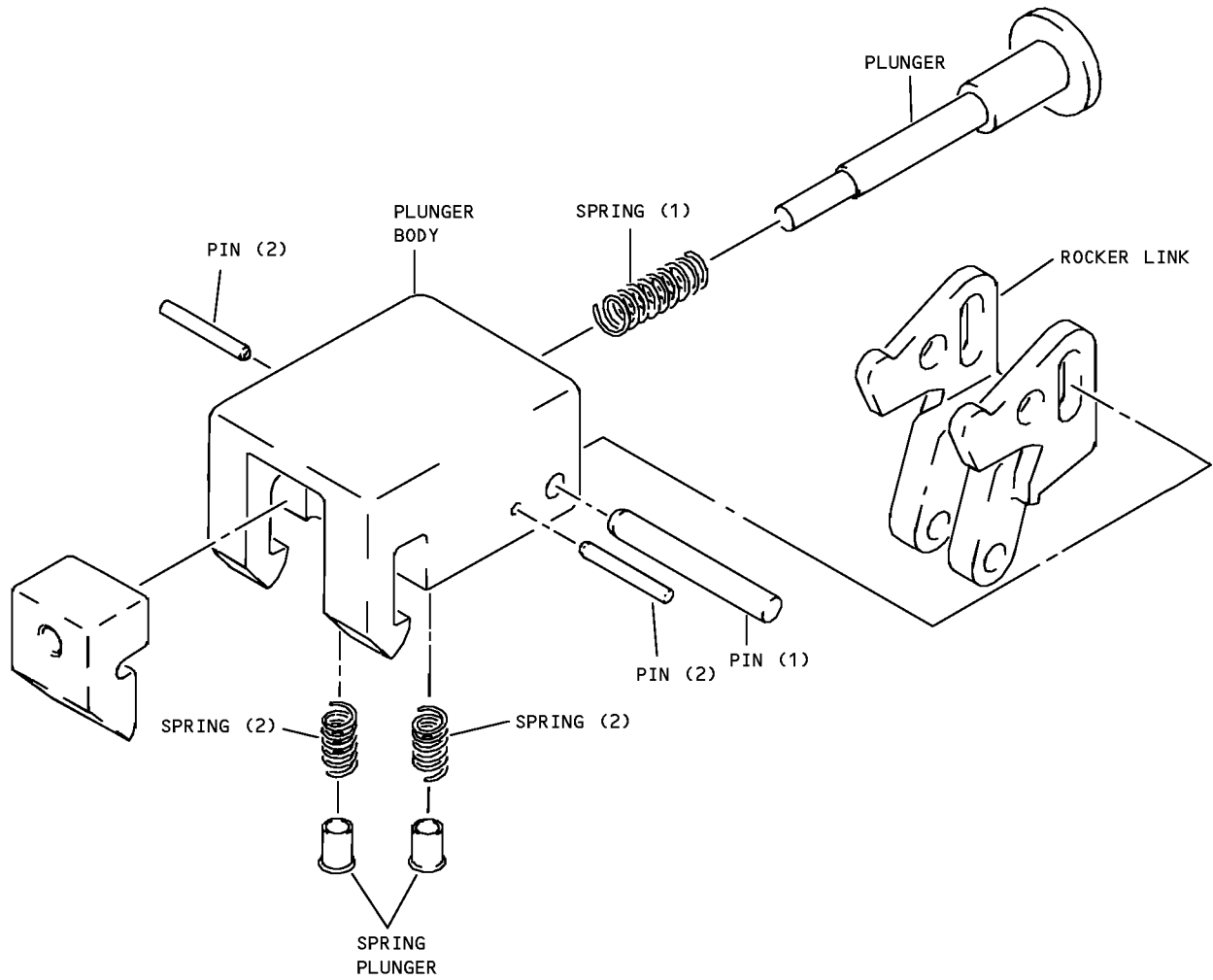
# 25-23-36

REPAIR 4-1

Page 601

Jul 01/2007

COMPONENT MAINTENANCE MANUAL



417N3180-1

Clamp Assembly Replacement  
Figure 601

**25-23-36**

REPAIR 4-1

Page 602

Jul 01/2007



## COMPONENT MAINTENANCE MANUAL

### ASSEMBLY

#### 1. General

- A. This procedure contains the data necessary to assemble the aft partial underbin passenger service unit assembly.
- B. Refer to the Standard Overhaul Practices Manual (SOPM) for the SOPM subjects identified in this procedure.

#### 2. Assembly

**CAUTION:** SOME PARTS OF THIS ASSEMBLY CAN BE SEEN FROM THE CABIN INTERIOR. BE CAREFUL NOT TO DAMAGE SURFACES THE PASSENGERS WILL SEE.

##### 2. A. Consumable Materials

**NOTE:** Equivalent substitutes may be used.

| Reference | Description  | Specification         |
|-----------|--|-----------------------|
| C00039    | Primer - Interior Decorative Urethane, White             | BMS10-83,<br>Type I   |
| C00923    | Coating - Interior Decorative Urethane Enamel, Low Gloss | BMS10-83,<br>Type III |

##### B. Procedure

- (1) Use standard industry practices and these steps.
- (2) Paint exposed rivet heads with primer, C00039 and enamel coating, C00923, in the airline color scheme.

# 25-23-36

ASSEMBLY

Page 701

Jul 01/2007



COMPONENT MAINTENANCE MANUAL

FITS AND CLEARANCES

**(NOT APPLICABLE)**

**25-23-36**

FITS AND CLEARANCES

Page 801

Jul 01/2007





## COMPONENT MAINTENANCE MANUAL

### SPECIAL TOOLS, FIXTURES, AND EQUIPMENT

#### 1. General

A. This section lists the special tools, fixtures, and equipment necessary for maintenance.

**NOTE:** Equivalent substitutes may be used.

#### Commercial Tools

| Reference | Description       | Part Number | Supplier |
|-----------|-------------------|-------------|----------|
| COM-5826  | Lamp - 28V, 40 MA | 327         | 3B182    |

#### Tool Supplier Information

| CAGE Code | Supplier Name               | Supplier Address   |
|-----------|-----------------------------|--|
| 3B182     | GENERAL ELECTRIC SUPPLY CO. | 2432 BROCTON<br>SAN ANTONIO, TX<br>78217-4909<br>Telephone: (216) 266-2536 |

# 25-23-36

SPECIAL TOOLS, FIXTURES, AND EQUIPMENT

Page 901

Jul 01/2007



## COMPONENT MAINTENANCE MANUAL

### ILLUSTRATED PARTS LIST

#### 1. Introduction

- A. The Illustrated Parts List (IPL) contains an illustration and a list of component parts you can repair or replace. The Illustrated Parts Catalog (IPC) shows how to use the Boeing part number system.
- B. This shows how parts are related: The relation of each item to its next higher assembly (NHA) is shown in the NOMENCLATURE column. Use the indenture system that follows:

| 1 | 2                            | 3                               | 4                               | 5                                 | 6 | 7   |
|---|------------------------------|---------------------------------|---------------------------------|-----------------------------------|---|---|
| . | Assembly                     |                                 |                                 |                                   |   |   |
| . | Attaching parts for assembly |                                 |                                 |                                   |   |   |
| . | .                            | Detail parts for assembly       |                                 |                                   |   |   |
| . | .                            | Subassembly                     |                                 |                                   |   |   |
| . | .                            | Attaching parts for subassembly |                                 |                                   |   |   |
| . | .                            | .                               | Detail parts for subassembly    |                                   |   |   |
| . | .                            | .                               | Sub-subassembly                 |                                   |   |   |
| . | .                            | .                               | Attaching parts for subassembly |                                   |   |   |
| . | .                            | .                               | .                               | Details parts for sub-subassembly |   |   |
|   |                              |                                 |                                 |                                   |   | Detail Installation Parts (Included only if installation parts may be sent to the shop as part of assembly) |

- C. Each top assembly is given one use code letter (A, B, C, etc.) in the USAGE CODE column. All subsequent component parts in the list can have one or more of the use code letters to show effectivity to top assemblies. A component part without a use code applies to all top assemblies.
- D. An alphabetical letter is added after the item number for optional parts, parts changed by a Service Bulletin, configuration differences (except left-handed and right-handed parts), last engineering releases, and parts added between item numbers in a sequence. The alphabetical letter will not be shown on the illustration for equivalent parts of the same part number.
- E. Color-coded parts are identified with a single digit alpha following the dash number or with "SP" suffix. If the "SP" suffix is used, it represents consolidation of all color codes applicable for a given usage which are not separately listed. Orders for color-coded parts should include the registry number of the airplane for which the parts are ordered.
- F. If a part number is 15 characters long but will not fit in the part number column, the part number will be displayed with a "~" at the end of the line and will be continued on the next line. The "~" denotes that the part number continues on the next line.
- G. Parts changed by a Service Bulletin are shown by PRE SB XXXX and POST SB XXXX added to the NOMENCLATURE column.
- (1) When a new top assembly is added by a Service Bulletin, PRE SB XXXX and POST SB XXXX will be added at the top assembly level only. The configuration differences at the detail part level are shown by use code letters.
- (2) When the top assembly part number is not changed by the Service Bulletin, PRE SB XXXX and POST SB XXXX will be added at the detail level.
- H. Interchangeable Parts

# 25-23-36

ILLUSTRATED PARTS LIST

Page 1001

Nov 01/2008



## COMPONENT MAINTENANCE MANUAL

|  |  |
|--|--|
| Optional<br>(OPT)  | The part is optional to and interchangeable with other parts that have the same item number. |
| Replaces, Replaced by and not interchangeable with<br>(REPLACES, REPLACED BY AND NOT INTCHG/W) | The part replaces and is not interchangeable with the initial part.                          |
| Replaces, Replaced by<br>(REPLACES, REPLACED BY)   | The part replaces and is interchangeable with, or is an alternative to, the initial part.    |

### VENDOR CODES

| <b>Code</b> | <b>Name</b>  |
|-------------|--|
| 01556       | EMHART FASTENING SYSTEMS GROUP HELI-COIL DIV<br>SHELTER ROCK LANE<br>DANBURY, CONNECTICUT 06810<br>FORMERLY HELI-COIL DIV OF BLACK AND DECKER              |
| 06383       | PANDUIT CORPORATION<br>17301 RIDGELAND AVENUE<br>TINLEY PARK, ILLINOIS 60477-3048  |
| 07096       | BURKE RUBBER CO PUROSIL DIV<br>1810 SOUTH SHAMROCK AVENUE PO BOX 5023<br>MONROVIA, CALIFORNIA 91016-4251<br>FORMERLY HADBAR DIV OF PUROSIL INC             |
| 07150       | ELECTRO-MECH COMPONENTS INC<br>1826 NORTH FLORADALE AVENUE<br>SOUTH EL MONTE, CALIFORNIA 91733-3689  |
| 08205       | RENTON COIL SPRING COMPANY<br>325 BURNETT NORTH PO BOX 328<br>RENTON, WASHINGTON 98057<br>FORMERLY VB0009  |
| 09922       | SOURIAU USA INC<br>25 GRUMBACHER DR<br>YORK, PENNSYLVANNIA 17402-9417<br>FORMERLY FRAMATOME CONNECTORS FRANCE<br>FORMERLY V59610 IIIN VALENCIA, CALIFORNIA |

# 25-23-36

ILLUSTRATED PARTS LIST

Page 1002

Jul 01/2007



## COMPONENT MAINTENANCE MANUAL

| Code  | Name  |
|-------|---|
| 11815 | CHERRY AEROSPACE FASTENERS DIV OF TEXTRON<br>1224 EAST WARNER AVENUE PO BOX 2157<br>SANTA ANA, CALIFORNIA 92707-0157<br>FORMERLY IN LOS ANGELES, CALIF , FORMERLY CHERRY FASTENERS<br>TOWNSEND DIV OF TEXTRON INC V71087  |
| 15653 | ALCOA GLOBAL FASTENERS INC DIV KAYNAR PRODUCTS<br>800 S STATE COLLEGE BLVD<br>FULLERTON, CALIFORNIA 92831-3001<br>FORMERLY VK6405 MICRODOT AEROSP LTD; FORMERLY KAYNAR<br>TECH<br>FORMERLY FAIRCHILD FASTENERS KAYNAR DIV   |
| 16632 | FLEXFAB HORIZONS INTERNATIONAL INC DBA FLEXFLAB LLC<br>1699 W. M-43 HWY<br>HASTINGS, MIGHIGAN 49058-8377  |
| 17744 | Replaced: [V17744] GULTON IND LUMINATOR DIV SEE LUMINATOR<br>HOLDING V0VDA9<br>by Code: Name and Address below<br>0VDA9: LUMINATOR HOLDING LLC A MARK IV IND CO<br>1200 EAST PLANO PKY SUITE 300 PO 940030<br>PLANO, TEXAS 75094-0030<br>FORMERLY MARK IV IND LUMINATOR AIRCRAFT PROD |
| 28406 | VAUPELL INDUSTRIAL PLASTICS, INCORPORATED<br>1144 NORTHWEST 53RD STREET<br>SEATTLE, WASHINGTON 98107-3735<br>FORMERLY VB0013 AND V0013B   |
| 2X013 | MCQUIRE BEARING COMPANY<br>947 SOUTHEAST MARKET STREET<br>PORTLAND, OREGON 97214-3556<br>FORMERLY V0647B  |
| 52828 | REPUBLIC FASTENER MFG CORP<br>1300 RANCHO CONEJO BLVD<br>NEWBURY PARK, CALIFORNIA 91320-1405<br>FORMERLY IN SYLMAR, CALIFORNIA  |

# 25-23-36

ILLUSTRATED PARTS LIST

Page 1003

Jul 01/2007



## COMPONENT MAINTENANCE MANUAL

| Code  | Name  |
|-------|---|
| 53551 | ALLFAST FASTENING SYSTEMS INC<br>15200 EAST DON JULIAN ROAD PO BOX 3166<br>CITY OF INDUSTRY, CALIFORNIA 91745-1001<br>FORMERLY V0736B<br>FORMERLY ALLFAST INC V5K545  |
| 57268 | RAINER RUBBER CO<br>15660 NELSON PL SO<br>SEATTLE, WASHINGTON 98188   |
| 58417 | SUNDSTRAND CORP<br>4751 HARRISON AVENUE PO BOX 7003<br>ROCKFORD, ILLINOIS 61125   |
| 59730 | Replaced: [V59730] THOMAS AND BETTS CORP SEE V56501<br>by Code: Name and Address below<br>56501: THOMAS AND BETTS CORP<br>8155 T AND B BLVD<br>MEMPHIS, TENNESSEE 38125<br>FORMERLY V 06865 AND V59730 THOMAS AND BETTS CORP  |
| 60980 | MEGGITT-OREGON INC DBA MEGGITT SILICONE PROD DIV MSP<br>2010 LAFAYETTE AVE P.O. BOX 887<br>MCMINNVILLE, OREGON 97128<br>FORMERLY ELASTOMERIC SILICON PRODUCTS   |
| 71087 | Replaced: [V71087] BOOTS ACFT NUT DIV TOWNSEND CO SEE TEXTRON<br>INC CHERRY<br>FASTENER TOWNSEND DIV V11815<br>by Code: Name and Address below<br>11815: CHERRY AEROSPACE FASTENERS DIV OF TEXTRON<br>1224 EAST WARNER AVENUE PO BOX 2157<br>SANTA ANA, CALIFORNIA 92707-0157<br>FORMERLY IN LOS ANGELES, CALIF , FORMERLY CHERRY FASTENERS<br>TOWNSEND DIV OF TEXTRON INC V71087 |
| 72914 | HONEYWELL/GRIMES AEROSPACE<br>550 STATE RT 55<br>URBANA, OHIO 43078<br>FORMERLY AERO-FLOW V70128; MIDLAND-ROSS JANITROL AERO DIV;<br>FORMERLY FL AEROSP CORP V89513; ALLIEDSIGNAL/GRIMES AEROSP<br>FORMERLY GRIMES AEROSPACE V00672 AND HONEYWELL V60187  |

# 25-23-36

ILLUSTRATED PARTS LIST

Page 1004

Jul 01/2007



## COMPONENT MAINTENANCE MANUAL

| Code  | Name  |
|-------|---|
| 72962 | HARVARD INDUSTRIES INC<br>3 WERNER WAY SUITE 210<br>LEBANON, NEW JERSEY 08833<br>FORMERLY ESNA V7A079<br>FORMERLY ELASTIC STOP NUT IN UNION, NJ   |
| 73197 | HI-SHEAR TECHNOLOGY CORP<br>2600 SKYPARK DRIVE<br>TORRANCE, CALIFORNIA 90509  |
| 75345 | KIRKHILL RUBBER CO<br>300 EAST CYPRESS STREET<br>BREA, CALIFORNIA 92821-4097<br>FORMERLY L.A. STANDARD RUBBER CO V84914   |
| 80539 | SPS TECHNOLOGIES INC DIV AERPSOACE - SANTA ANA<br>2701 SOUTH HARBOR BOULEVARD<br>SANTA ANA, CALIFORNIA 92704-5803<br>FORMERLY NUTT-SHEL DIV OF SPC WESTERN CO V80539<br>AND STANDARD PRESSED STEEL WESTERN DIV V17279                       |
| 83564 | WEMAC DIV OF PURITAN-BENNETT AERO SYS CO<br>18475 PACIFIC STREET PO BOX 8797<br>FOUNTAIN VALLEY, CALIFORNIA 92708-7004<br>FORMERLY IN SANTA ANA, CALIFORNIA WEMAC AIRCRAFT AND<br>PRECISION PRODUCTS AND PURITAN BENNETT AERO SYS WEMAC DIV |
| 84483 | ENRICO FASTENING SYSTEMS<br>301 NEW ALBANY ROAD<br>MOORESTOWN, NEW JERSEY 08057-1120<br>FORMERLY OMARK IND INC AND KSM WELDING SYS DIV OF OMARK<br>IND INC AND KSM FASTENING SYSTEMS  |
| 91929 | HONEYWELL INC MICRO SWITCH DIV<br>11 WEST SPRING STREET<br>FREEPORT, ILLINOIS 61032<br>FORMERLY MICRO SWITCH A DIV OF HONEYWELL<br>FORMERLY V74059 AND V40228   |

# 25-23-36

ILLUSTRATED PARTS LIST

Page 1005

Jul 01/2007

**COMPONENT MAINTENANCE MANUAL**

| <b>Code</b> | <b>Name</b>   |
|-------------|---|
| 92215       | FAIRCHILD IND INC FAIRCHILD AEROSPACE FASTENER DIV<br>3010 W LOMITA BLVD<br>TORRANCE, CALIFORNIA 90505-5102<br>FORMERLY VOI-SHAN IN CULVER CITY, CALIF            |
| 95272       | STILLMAN SEL CORP<br>6020 AVENIDA ENCINAS<br>CARLSBAD, CALIFORNIA 92009-1001<br>FORMERLY SARGENT IND  |
| 97393       | SHUR-LOK CORPORATION<br>2541 WHITE ROAD PO BOX 19584<br>IRVINE, CALIFORNIA 92623-9584<br>FORMERLY SHUR LOK CORP VB0060<br>FORMERLY IN SANTA ANA, CALIFORNIA 92714 |
| 98996       | OLYMPIC FASTENING SYSTEMS INC<br>DOWNEY, CALIFORNIA 90241-4986<br>OBSOLETE RECORD   |

**25-23-36**

ILLUSTRATED PARTS LIST

Page 1006

Jul 01/2007



## COMPONENT MAINTENANCE MANUAL

### NUMERICAL INDEX

| PART NUMBER    | AIRLINE PART NUMBER | FIGURE | ITEM | UNITS PER ASSEMBLY |
|----------------|---------------------|--------|------|--------------------|
| 10-1006-1      |                     | 1      | 170  | 1                  |
| 10-1006-2      |                     | 1      | 175  | 1                  |
| 10-60141-23A   |                     | 1      | 190F | 3                  |
| 10-60141-23S   |                     | 1      | 190D | 3                  |
| 10-60141-23T   |                     | 1      | 190B | 3                  |
| 10-60141-23U   |                     | 1      | 190G | 3                  |
| 10-60141-25    |                     | 1      | 190E | 3                  |
| 10-61790-1     |                     | 1      | 255  | 1                  |
| 1707-23A       |                     | 1      | 190F | 3                  |
| 1TW2-3         |                     | 1      | 275  | 1                  |
| 286N0512-002   |                     | 1      | 350B | 1                  |
| 286N0512-004   |                     | 1      | 350D | 1                  |
| 286N0512-007   |                     | 1      | 350E | 1                  |
| 286N0512-008   |                     | 1      | 350G | 1                  |
| 288N0174-701   |                     | 1      | 350H | 1                  |
| 288N0210-702   |                     | 1      | 350J | 1                  |
| 2TW2-3         |                     | 1      | 275A | 1                  |
| 3740-3         |                     | 1      | 190G | 3                  |
| 417N3063-4     |                     | 1      | 205  | 1                  |
| 417N3100-135SP |                     | 1      | 1    | RF                 |
| 417N3100-136SP |                     | 1      | 5    | RF                 |
| 417N3100-199SP |                     | 1      | 180B | 1                  |
| 417N3100-25SP  |                     | 1      | 180  | 1                  |
| 417N3100-26    |                     | 1      | 180A | 1                  |
| 417N3100-5     |                     | 1      | 30   | 1                  |
| 417N3100-537SP |                     | 1      | 1A   | RF                 |
| 417N3100-538SP |                     | 1      | 5A   | RF                 |
| 417N3100-541SP |                     | 1      | 1B   | RF                 |
| 417N3100-542SP |                     | 1      | 5B   | RF                 |
| 417N3100-543SP |                     | 1      | 1C   | RF                 |
| 417N3100-544SP |                     | 1      | 5C   | RF                 |
| 417N3100-6     |                     | 1      | 35   | 1                  |
| 417N3100-619SP |                     | 1      | 1D   | RF                 |
| 417N3100-620SP |                     | 1      | 5D   | RF                 |

# 25-23-36

ILLUSTRATED PARTS LIST

Page 1007

Jul 01/2007





## COMPONENT MAINTENANCE MANUAL

| PART NUMBER    | AIRLINE PART NUMBER | FIGURE | ITEM | UNITS PER ASSEMBLY |
|----------------|---------------------|--------|------|--------------------|
| 417N3100-635SP |                     | 1      | 1E   | RF                 |
| 417N3100-636SP |                     | 1      | 5E   | RF                 |
| 417N3100-71    |                     | 1      | 240  | 2                  |
| 417N3100-710SP |                     | 1      | 5F   | RF                 |
| 417N3100-711SP |                     | 1      | 1F   | RF                 |
| 417N3100-715SP |                     | 1      | 1G   | RF                 |
| 417N3100-716SP |                     | 1      | 5G   | RF                 |
| 417N3100-746B  |                     | 1      | 5J   | RF                 |
| 417N3100-747B  |                     | 1      | 1J   | RF                 |
| 417N3100-85    |                     | 1      | 30A  | 1                  |
|                |                     | 1      | 30B  | 1                  |
|                |                     | 1      | 35A  | 1                  |
|                |                     | 1      | 35B  | 1                  |
| 417N3100-87    |                     | 1      | 30C  | 1                  |
| 417N3101-1SP   |                     | 1      | 235A | 1                  |
| 417N3101-2SP   |                     | 1      | 235  | 1                  |
| 417N3102-1     |                     | 1      | 470  | 2                  |
|                |                     | 1      | 710  | 2                  |
| 417N3103-1     |                     | 1      | 200  | 1                  |
| 417N3105-4SP   |                     | 1      | 210  | 1                  |
| 417N3105-5D    |                     | 1      | 210D | 1                  |
| 417N3105-5SP   |                     | 1      | 210C | 1                  |
| 417N3105-6SP   |                     | 1      | 210A | 1                  |
|                |                     | 1      | 210B | 1                  |
| 417N3110-3SP   |                     | 1      | 355  | 1                  |
| 417N3110-43D   |                     | 1      | 580B | 1                  |
| 417N3110-43SP  |                     | 1      | 580  | 1                  |
|                |                     | 1      | 580A | 1                  |
| 417N3110-44D   |                     | 1      | 585B | 1                  |
| 417N3110-44SP  |                     | 1      | 585  | 1                  |
|                |                     | 1      | 585A | 1                  |
| 417N3110-4SP   |                     | 1      | 360  | 1                  |
| 417N3110-51    |                     | 1      | 595  | 1                  |
| 417N3110-52    |                     | 1      | 600  | 1                  |
| 417N3111-3SP   |                     | 1      | 565  | 1                  |

# 25-23-36

ILLUSTRATED PARTS LIST

Page 1008

Jul 01/2007



## COMPONENT MAINTENANCE MANUAL

| PART NUMBER  | AIRLINE PART NUMBER | FIGURE | ITEM | UNITS PER ASSEMBLY |
|--------------|---------------------|--------|------|--------------------|
|              |                     | 1      | 805  | 1                  |
| 417N3111-4SP |                     | 1      | 570  | 1                  |
|              |                     | 1      | 810  | 1                  |
| 417N3121-117 |                     | 1      | 550  | 1                  |
|              |                     | 1      | 795  | 1                  |
| 417N3121-118 |                     | 1      | 555  | 1                  |
|              |                     | 1      | 800  | 1                  |
| 417N3121-121 |                     | 1      | 520  | 1                  |
|              |                     | 1      | 765  | 1                  |
| 417N3121-122 |                     | 1      | 525  | 1                  |
|              |                     | 1      | 770  | 1                  |
| 417N3121-17  |                     | 1      | 490  | 1                  |
|              |                     | 1      | 730  | 1                  |
| 417N3121-18  |                     | 1      | 505  | 1                  |
|              |                     | 1      | 745  | 1                  |
| 417N3121-3   |                     | 1      | 540  | 1                  |
|              |                     | 1      | 785  | 1                  |
| 417N3121-4   |                     | 1      | 545  | 1                  |
|              |                     | 1      | 790  | 1                  |
| 417N3121-94  |                     | 1      | 495  | 1                  |
|              |                     | 1      | 735  | 1                  |
| 417N3122-1   |                     | 1      | 515  | 1                  |
|              |                     | 1      | 760  | 1                  |
| 417N3122-107 |                     | 1      | 75   | 1                  |
| 417N3122-108 |                     | 1      | 80   | 1                  |
| 417N3122-109 |                     | 1      | 100  | 1                  |
| 417N3122-110 |                     | 1      | 105  | 1                  |
| 417N3122-111 |                     | 1      | 220  | 1                  |
| 417N3122-112 |                     | 1      | 230  | 1                  |
| 417N3122-130 |                     | 1      | 165A | 1                  |
| 417N3122-14  |                     | 1      | 55   | 2                  |
|              |                     | 1      | 70   | 2                  |
| 417N3122-3   |                     | 1      | 535  | 1                  |
|              |                     | 1      | 780  | 1                  |
| 417N3122-4   |                     | 1      | 530  | 1                  |

# 25-23-36

ILLUSTRATED PARTS LIST

Page 1009

Jul 01/2007



## COMPONENT MAINTENANCE MANUAL

| PART NUMBER | AIRLINE PART NUMBER | FIGURE | ITEM | UNITS PER ASSEMBLY |
|-------------|---------------------|--------|------|--------------------|
|             |                     | 1      | 775  | 1                  |
| 417N3122-53 |                     | 1      | 232  | 1                  |
| 417N3122-6  |                     | 1      | 560A | 7                  |
| 417N3122-60 |                     | 1      | 135  | 1                  |
| 417N3122-61 |                     | 1      | 165  | 1                  |
| 417N3122-71 |                     | 1      | 110  | 1                  |
| 417N3122-72 |                     | 1      | 130  | 1                  |
| 417N3170-11 |                     | 1      | 365  | 1                  |
|             |                     | 1      | 605  | 1                  |
| 417N3170-12 |                     | 1      | 410  | 1                  |
|             |                     | 1      | 650  | 1                  |
| 417N3171-2  |                     | 1      | 390  | 1                  |
|             |                     | 1      | 435  | 1                  |
|             |                     | 1      | 630  | 1                  |
|             |                     | 1      | 675  | 1                  |
| 417N3171-3  |                     | 1      | 630A | 1                  |
|             |                     | 1      | 675A | 1                  |
| 417N3172-10 |                     | 1      | 440  | 1                  |
|             |                     | 1      | 680  | 1                  |
| 417N3172-11 |                     | 1      | 405  | 1                  |
|             |                     | 1      | 645  | 1                  |
| 417N3172-12 |                     | 1      | 450  | 1                  |
|             |                     | 1      | 690  | 1                  |
| 417N3172-19 |                     | 1      | 635A | 1                  |
| 417N3172-20 |                     | 1      | 680A | 1                  |
| 417N3172-21 |                     | 1      | 645A | 1                  |
| 417N3172-22 |                     | 1      | 690A | 1                  |
| 417N3172-9  |                     | 1      | 395  | 1                  |
|             |                     | 1      | 635  | 1                  |
| 417N3173-1  |                     | 1      | 385  | 1                  |
|             |                     | 1      | 430  | 1                  |
|             |                     | 1      | 625  | 1                  |
|             |                     | 1      | 670  | 1                  |
| 417N3180-1  |                     | 1      | 290  | 2                  |
| 417N3180-3  |                     | 1      | 325  | 1                  |

# 25-23-36

ILLUSTRATED PARTS LIST

Page 1010

Jul 01/2007



## COMPONENT MAINTENANCE MANUAL

| PART NUMBER     | AIRLINE PART NUMBER | FIGURE | ITEM | UNITS PER ASSEMBLY |
|-----------------|---------------------|--------|------|--------------------|
| 417N3181-1      |                     | 1      | 305  | 1                  |
| 417N3182-1      |                     | 1      | 320  | 1                  |
| 417N3183-1      |                     | 1      | 335  | 1                  |
| 417N3190-1      |                     | 1      | 245  | 1                  |
| 417N3190-3      |                     | 1      | 270  | 1                  |
| 6035-2BR185     |                     | 1      | 400  | 2                  |
|                 |                     | 1      | 445  | 2                  |
|                 |                     | 1      | 640  | 2                  |
|                 |                     | 1      | 685  | 2                  |
| 61-33500-001    |                     | 1      | 350  | 1                  |
|                 |                     | 1      | 350C | 1                  |
| 61-33500-002    |                     | 1      | 350A | 1                  |
|                 |                     | 1      | 350F | 1                  |
| 6100-12         |                     | 1      | 285  | 2                  |
| 6100-9          |                     | 1      | 375  | 2                  |
|                 |                     | 1      | 420  | 2                  |
|                 |                     | 1      | 615  | 2                  |
|                 |                     | 1      | 660  | 2                  |
| 65-85902-1      |                     | 1      | 305A | 1                  |
| 65-85905-4      |                     | 1      | 310  | 1                  |
| 65C16899-6      |                     | 1      | 265  | 1                  |
| 65C31432-1      |                     | 1      | 187  | AR                 |
| 66-25727-1      |                     | 1      | 140  | 1                  |
| 66-25727-2      |                     | 1      | 145  | 1                  |
| 691212-13A1-1AR |                     | 1      | 15D  | 3                  |
| 691212-13A1-1AW |                     | 1      | 15B  | 3                  |
| 691212-13A1-1BA |                     | 1      | 15Y  | 3                  |
| 691212-13A1-1BD |                     | 1      | 16   | 3                  |
| 691212-13A1-1T  |                     | 1      | 15G  | 3                  |
| 701-3B3         |                     | 1      | 45C  | 5                  |
|                 |                     | 1      | 49C  | 2                  |
| 701-3B3J        |                     | 1      | 45B  | 5                  |
|                 |                     | 1      | 49B  | 2                  |
| 750801-002      |                     | 1      | 190D | 3                  |
| 82-47-108-15    |                     | 1      | 155  | 1                  |

# 25-23-36

ILLUSTRATED PARTS LIST

Page 1011

Jul 01/2007



## COMPONENT MAINTENANCE MANUAL

| PART NUMBER   | AIRLINE PART NUMBER | FIGURE | ITEM | UNITS PER ASSEMBLY |
|---------------|---------------------|--------|------|--------------------|
|               |                     | 1      | 225  | 1                  |
| 920055        |                     | 1      | 20   | 1                  |
| 920056        |                     | 1      | 10   | 3                  |
| 932501-830    |                     | 1      | 25F  | 1                  |
| 932501-924    |                     | 1      | 25B  | 1                  |
| 932501-928    |                     | 1      | 25R  | 1                  |
| 932501-930    |                     | 1      | 25   | 1                  |
| 932501-931    |                     | 1      | 25A  | 1                  |
| 96-82         |                     | 1      | 465  | 4                  |
|               |                     | 1      | 705  | 4                  |
| AF5170-3      |                     | 1      | 500  | 4                  |
|               |                     | 1      | 740  | 4                  |
| AN960JD416L   |                     | 1      | 340  | AR                 |
|               |                     | 1      | 340A | 4                  |
| AN960PD8L     |                     | 1      | 460  | 4                  |
|               |                     | 1      | 700  | 4                  |
| B0E20563A152  |                     | 1      | 185  | 1                  |
| B0E20563A180  |                     | 1      | 185A | 1                  |
| BAC27NPA0609  |                     | 1      | 830  | 1                  |
| BAC27NPA0610  |                     | 1      | 825  | 1                  |
| BAC27NPA0648  |                     | 1      | 820  | 1                  |
| BAC27NPA0649  |                     | 1      | 815  | 1                  |
| BAC29PPS10437 |                     | 1      | 820A | 1                  |
| BAC29PPS10438 |                     | 1      | 815A | 1                  |
| BAC29PPS1428  |                     | 1      | 820B | 1                  |
| BAC29PPS1429  |                     | 1      | 815B | 1                  |
| BACB30MB3A    |                     | 1      | 480  | 2                  |
| BACC30Z3      |                     | 1      | 485  | 2                  |
| BACD40P3A120  |                     | 1      | 185  | 1                  |
| BACD40P3A180  |                     | 1      | 185A | 1                  |
| BACG20AF3B3   |                     | 1      | 45C  | 5                  |
|               |                     | 1      | 49C  | 2                  |
| BACG20AF3B3J  |                     | 1      | 45B  | 5                  |
|               |                     | 1      | 49B  | 2                  |
| BACN10JC08    |                     | 1      | 465  | 4                  |

# 25-23-36

ILLUSTRATED PARTS LIST

Page 1012

Jul 01/2007



## COMPONENT MAINTENANCE MANUAL

| PART NUMBER  | AIRLINE PART NUMBER | FIGURE | ITEM | UNITS PER ASSEMBLY |
|--------------|---------------------|--------|------|--------------------|
| BACN10YJ08   |                     | 1      | 705  | 4                  |
|              |                     | 1      | 43   | 4                  |
|              |                     | 1      | 46   | 5                  |
|              |                     | 1      | 50   | 2                  |
|              |                     | 1      | 54   | 2                  |
|              |                     | 1      | 65   | 2                  |
|              |                     | 1      | 90   | 2                  |
|              |                     | 1      | 120  | 4                  |
|              |                     | 1      | 150  | 1                  |
|              | BACR15BB3AD         |        | 1    | 510A               |
|              |                     | 1      | 755A | 7                  |
| BACR15BB4D10 |                     | 1      | 280  | 2                  |
| BACR15DR3    |                     | 1      | 720A | 2                  |
| BACR15DR3P   |                     | 1      | 500  | 4                  |
|              |                     | 1      | 740  | 4                  |
| BACS12FA08K5 |                     | 1      | 53   | 2                  |
|              |                     | 1      | 60   | 2                  |
|              |                     | 1      | 85   | 2                  |
|              |                     | 1      | 115  | 2                  |
| BACS12FA08K6 |                     | 1      | 370  | 2                  |
|              |                     | 1      | 415  | 2                  |
|              |                     | 1      | 610  | 2                  |
|              |                     | 1      | 655  | 2                  |
| BACS12FA08K7 |                     | 1      | 455  | 4                  |
|              |                     | 1      | 695  | 4                  |
| BACS13S205C  |                     | 1      | 250A | 4                  |
| BACS13S219C  |                     | 1      | 250  | 4                  |
| BACS21AQ2A3K |                     | 1      | 95A  | 2                  |
|              |                     | 1      | 125A | 2                  |
|              |                     | 1      | 160A | 1                  |
| BACS21AQ6A6M |                     | 1      | 215  | 4                  |
| BRH10A08     |                     | 1      | 465  | 4                  |
|              |                     | 1      | 705  | 4                  |
| CCR274SS3    |                     | 1      | 500  | 4                  |
|              |                     | 1      | 740  | 4                  |

# 25-23-36

ILLUSTRATED PARTS LIST

Page 1013

Jul 01/2007



## COMPONENT MAINTENANCE MANUAL

| PART NUMBER   | AIRLINE PART NUMBER | FIGURE | ITEM | UNITS PER ASSEMBLY |
|---------------|---------------------|--------|------|--------------------|
| E3B3          |                     | 1      | 45C  | 5                  |
|               |                     | 1      | 49C  | 2                  |
| E3B3J         |                     | 1      | 45B  | 5                  |
|               |                     | 1      | 49B  | 2                  |
| FHS832-6      |                     | 1      | 160B | 1                  |
| G6940-3B3     |                     | 1      | 45C  | 5                  |
|               |                     | 1      | 49C  | 2                  |
| G6940-3B3J    |                     | 1      | 45B  | 5                  |
|               |                     | 1      | 49B  | 2                  |
| GSC205        |                     | 1      | 250A | 4                  |
| GSC219        |                     | 1      | 250  | 4                  |
| H10-08BAC     |                     | 1      | 465  | 4                  |
|               |                     | 1      | 705  | 4                  |
| H3B3          |                     | 1      | 45C  | 5                  |
|               |                     | 1      | 49C  | 2                  |
| H3B3J         |                     | 1      | 45B  | 5                  |
|               |                     | 1      | 49B  | 2                  |
| HL278-3       |                     | 1      | 485  | 2                  |
|               |                     | 1      | 485  | 2                  |
|               |                     | 1      | 485  | 2                  |
| L16999-16C    |                     | 1      | 190F | 3                  |
| MS20253P2-165 |                     | 1      | 380  | 1                  |
|               |                     | 1      | 425  | 1                  |
|               |                     | 1      | 620  | 1                  |
|               |                     | 1      | 665  | 1                  |
| MS35489-4X    |                     | 1      | 45A  | 5                  |
|               |                     | 1      | 49A  | 2                  |
| NAS43DD3-20   |                     | 1      | 41   | 4                  |
| NAS43DD3-7    |                     | 1      | 45   | 5                  |
|               |                     | 1      | 49   | 2                  |
| NAS43DD4-5    |                     | 1      | 260  | 1                  |
| NAS557-12A    |                     | 1      | 475  | 2                  |
|               |                     | 1      | 715  | 2                  |
| NAS607-1-4P   |                     | 1      | 300  | 2                  |
| NAS607-2-8P   |                     | 1      | 295  | 1                  |

# 25-23-36

ILLUSTRATED PARTS LIST

Page 1014

Jul 01/2007



## COMPONENT MAINTENANCE MANUAL

| PART NUMBER  | AIRLINE PART NUMBER | FIGURE | ITEM | UNITS PER ASSEMBLY |
|--------------|---------------------|--------|------|--------------------|
| NS202101-82  |                     | 1      | 465  | 4                  |
|              |                     | 1      | 705  | 4                  |
| PLT2MM       |                     | 1      | 195  | 3                  |
| PLT2MM2      |                     | 1      | 195A | 3                  |
| PLWP1S       |                     | 1      | 345  | AR                 |
|              |                     | 1      | 345A | 4                  |
| RCS3289      |                     | 1      | 330  | 2                  |
| RCS3290      |                     | 1      | 315  | 1                  |
| RMLH9075-82W |                     | 1      | 465  | 4                  |
|              |                     | 1      | 705  | 4                  |
| RR2002-3B3   |                     | 1      | 45C  | 5                  |
|              |                     | 1      | 49C  | 2                  |
| RR2002-3B3J  |                     | 1      | 45B  | 5                  |
|              |                     | 1      | 49B  | 2                  |
| RV570A3      |                     | 1      | 500  | 4                  |
|              |                     | 1      | 740  | 4                  |
| S417N302-1   |                     | 1      | 170  | 1                  |
| S417N302-2   |                     | 1      | 175  | 1                  |
| S417N303-2A  |                     | 1      | 25R  | 1                  |
| S417N303-2B  |                     | 1      | 25S  | 1                  |
| S417N303-2C  |                     | 1      | 25   | 1                  |
| S417N303-2D  |                     | 1      | 25A  | 1                  |
| S417N303-2E  |                     | 1      | 25B  | 1                  |
| S417N303-2F  |                     | 1      | 25C  | 1                  |
| S417N303-2G  |                     | 1      | 25D  | 1                  |
| S417N303-2H  |                     | 1      | 25L  | 1                  |
| S417N303-2J  |                     | 1      | 25W  | 1                  |
| S417N303-2K  |                     | 1      | 25V  | 1                  |
| S417N303-2L  |                     | 1      | 25X  | 1                  |
| S417N303-3A  |                     | 1      | 25E  | 1                  |
| S417N303-3B  |                     | 1      | 25Q  | 1                  |
| S417N303-3C  |                     | 1      | 25U  | 1                  |
| S417N303-4A  |                     | 1      | 25F  | 1                  |
| S417N304-1A  |                     | 1      | 15U  | 3                  |
| S417N304-1B  |                     | 1      | 15   | 3                  |

# 25-23-36

ILLUSTRATED PARTS LIST

Page 1015

Jul 01/2007





## COMPONENT MAINTENANCE MANUAL

| PART NUMBER | AIRLINE PART NUMBER | FIGURE | ITEM | UNITS PER ASSEMBLY |
|-------------|---------------------|--------|------|--------------------|
| S417N304-1C |                     | 1      | 15A  | 3                  |
| S417N304-1M |                     | 1      | 15T  | 3                  |
| S417N304-1N |                     | 1      | 15V  | 3                  |
| S417N304-1P |                     | 1      | 15M  | 3                  |
| S417N304-1R |                     | 1      | 15N  | 3                  |
| S417N304-1S |                     | 1      | 15W  | 3                  |
| S417N304-1T |                     | 1      | 15Z  | 3                  |
| S417N304-6C |                     | 1      | 16   | 3                  |
| S417N304-6D |                     | 1      | 15Y  | 3                  |
| S417N304-6F |                     | 1      | 16A  | 3                  |
| S417N304-6G |                     | 1      | 15D  | 3                  |
| S417N304-6H |                     | 1      | 15R  | 3                  |
| S417N304-6J |                     | 1      | 16B  | 3                  |
| S417N304-6K |                     | 1      | 16C  | 3                  |
| S417N304-6L |                     | 1      | 15G  | 3                  |
| S417N304-6M |                     | 1      | 15X  | 3                  |
| S47N304-6E  |                     | 1      | 15B  | 3                  |
| SL6189-08-4 |                     | 1      | 560  | 7                  |
|             |                     | 1      | 590  | 5                  |
| SZ6924-3B3  |                     | 1      | 45C  | 5                  |
|             |                     | 1      | 49C  | 2                  |
| SZ6924-3B3J |                     | 1      | 45B  | 5                  |
|             |                     | 1      | 49B  | 2                  |
| T6S832J     |                     | 1      | 465  | 4                  |
|             |                     | 1      | 705  | 4                  |
| VIP270-1N   |                     | 1      | 15V  | 3                  |
| VIP720-1A   |                     | 1      | 15U  | 3                  |
| VIP720-1B   |                     | 1      | 15   | 3                  |
| VIP720-1C   |                     | 1      | 15A  | 3                  |
| VIP720-1M   |                     | 1      | 15T  | 3                  |
| VIP720-1S   |                     | 1      | 15W  | 3                  |
| VIP720-1T   |                     | 1      | 15Z  | 3                  |
| VIP720-2A   |                     | 1      | 25R  | 1                  |
| VIP720-2B   |                     | 1      | 25S  | 1                  |
| VIP720-2C   |                     | 1      | 25   | 1                  |

# 25-23-36

ILLUSTRATED PARTS LIST

Page 1016

Jul 01/2007



## COMPONENT MAINTENANCE MANUAL

| PART NUMBER | AIRLINE PART NUMBER | FIGURE | ITEM | UNITS PER ASSEMBLY |
|-------------|---------------------|--------|------|--------------------|
| VIP720-2D   |                     | 1      | 25A  | 1                  |
| VIP720-2E   |                     | 1      | 25B  | 1                  |
| VIP720-2F   |                     | 1      | 25C  | 1                  |
| VIP720-2G   |                     | 1      | 25D  | 1                  |
| VIP720-2J   |                     | 1      | 25W  | 1                  |
| VIP720-2K   |                     | 1      | 25V  | 1                  |
| VIP720-2L   |                     | 1      | 25X  | 1                  |
| VIP720-3A   |                     | 1      | 25E  | 1                  |
| VIP720-3C   |                     | 1      | 25U  | 1                  |
| VIP720-4A   |                     | 1      | 25F  | 1                  |
| VIP720-6C   |                     | 1      | 16   | 3                  |
| VIP720-6D   |                     | 1      | 15Y  | 3                  |
| VIP720-6E   |                     | 1      | 15B  | 3                  |
| VIP720-6G   |                     | 1      | 15D  | 3                  |
| VIP720-6L   |                     | 1      | 15G  | 3                  |
| VIP720-6M   |                     | 1      | 15X  | 3                  |
| VN303A82    |                     | 1      | 465  | 4                  |
|             |                     | 1      | 705  | 4                  |
| Y0C130      |                     | 1      | 250A | 4                  |
| Y0C140      |                     | 1      | 250  | 4                  |

# 25-23-36

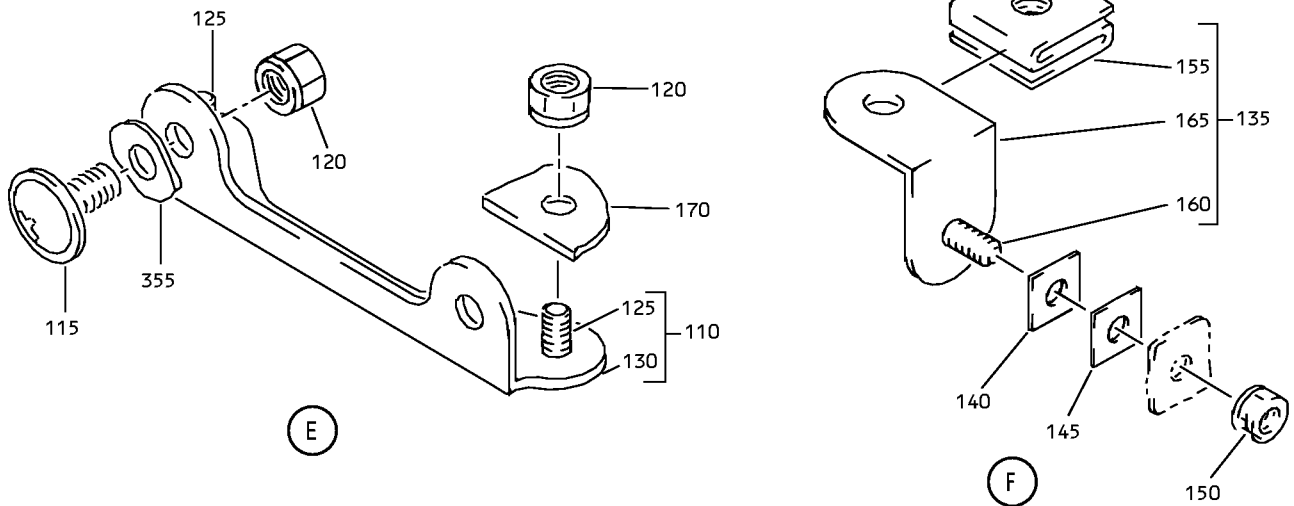
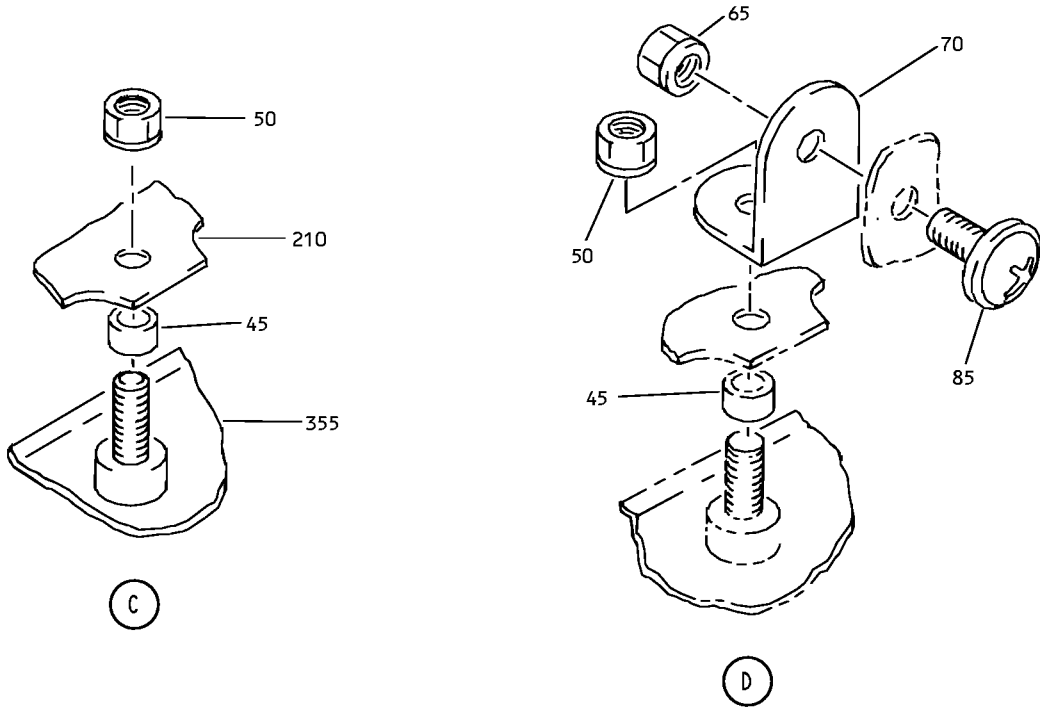
ILLUSTRATED PARTS LIST

Page 1017

Jul 01/2007



COMPONENT MAINTENANCE MANUAL



Aft Partial Underbin Passenger (with Gasps) Service Unit Assembly  
IPL Figure 1 (Sheet 2 of 5)

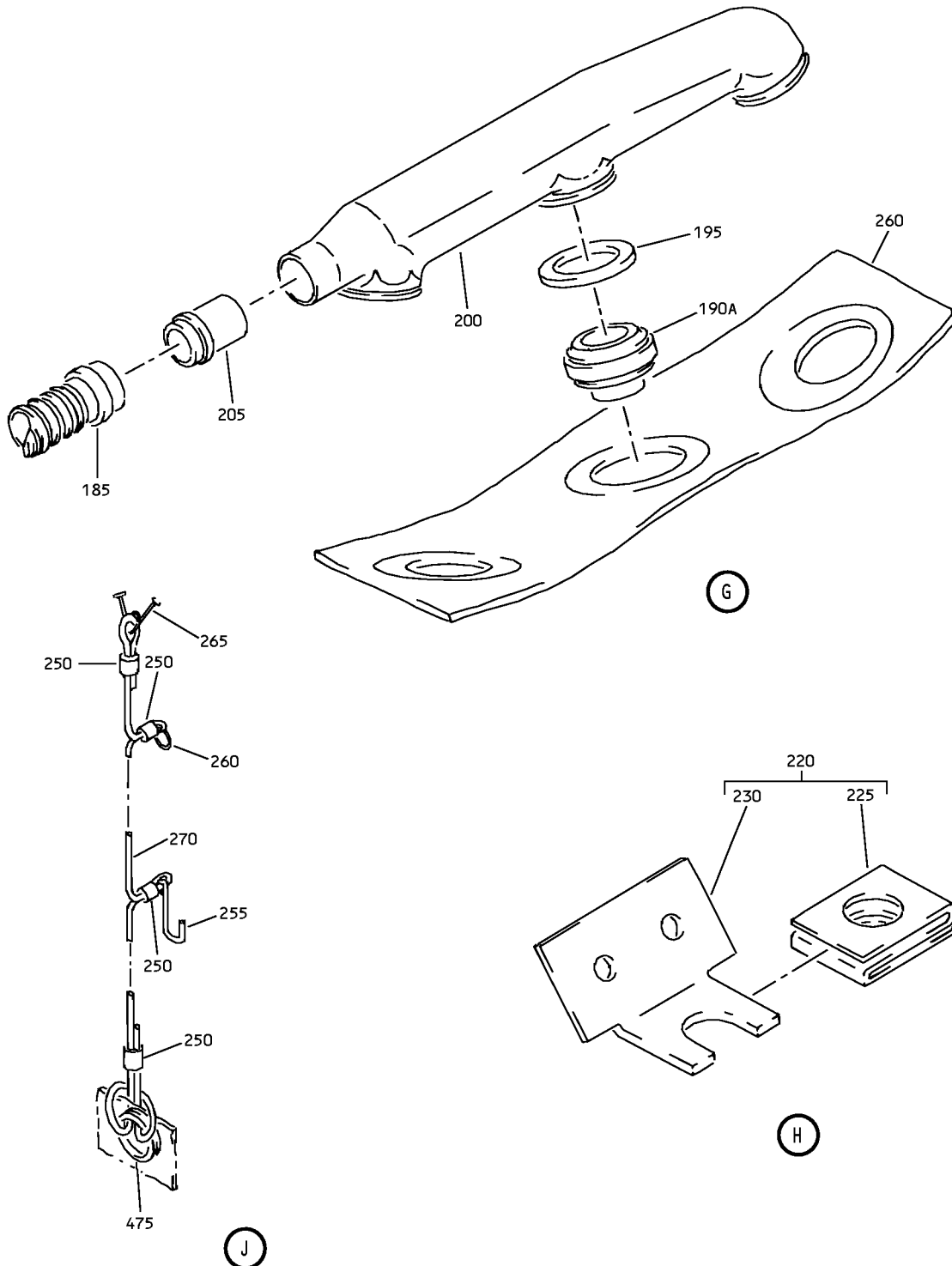
**25-23-36**

ILLUSTRATED PARTS LIST

Page 1019

Jul 01/2007

COMPONENT MAINTENANCE MANUAL



Aft Partial Underbin Passenger (with Gasps) Service Unit Assembly  
 IPL Figure 1 (Sheet 3 of 5)

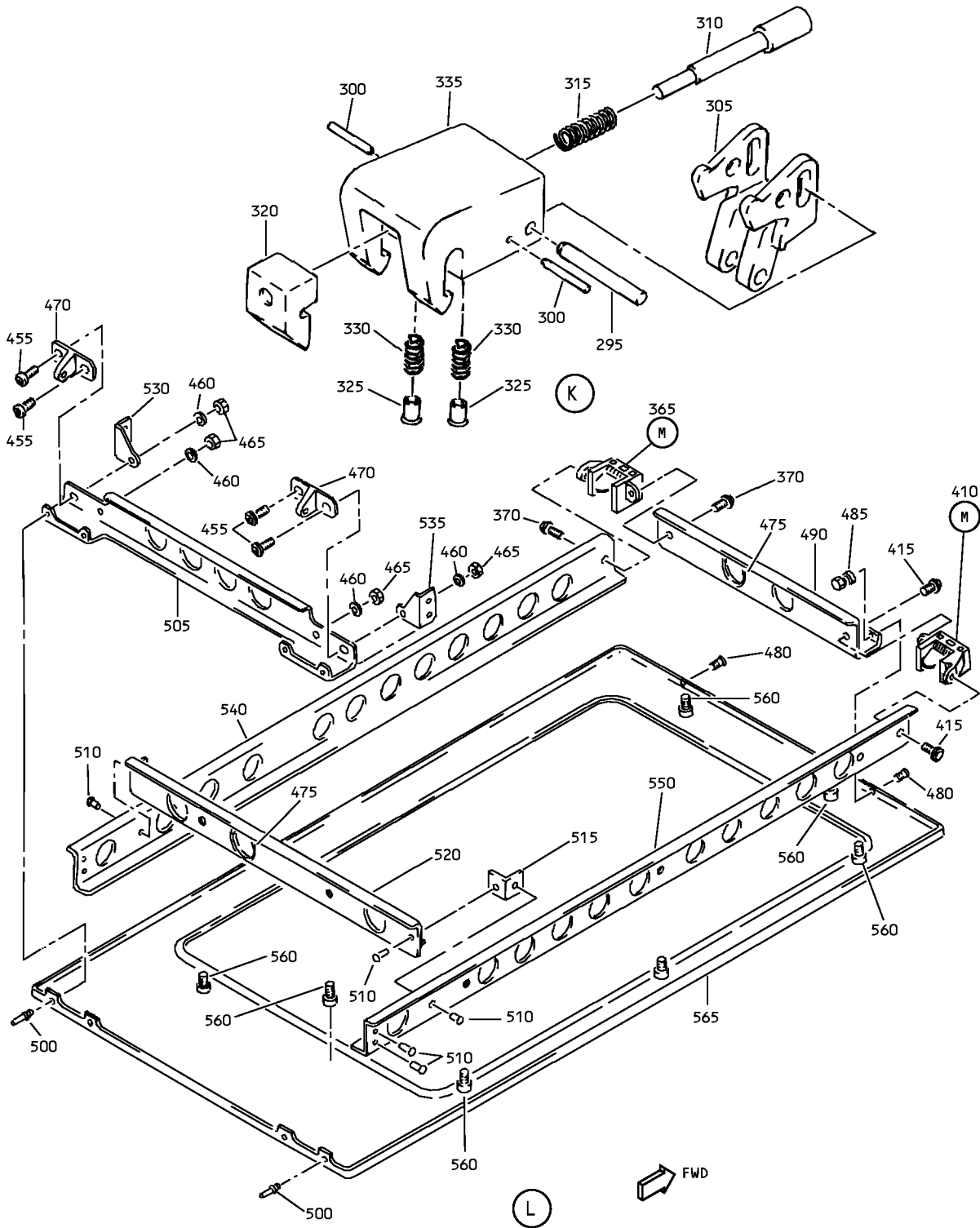
**25-23-36**

ILLUSTRATED PARTS LIST

Page 1020

Jul 01/2007

COMPONENT MAINTENANCE MANUAL



Aft Partial Underbin Passenger (with Gasps) Service Unit Assembly  
IPL Figure 1 (Sheet 4 of 5)

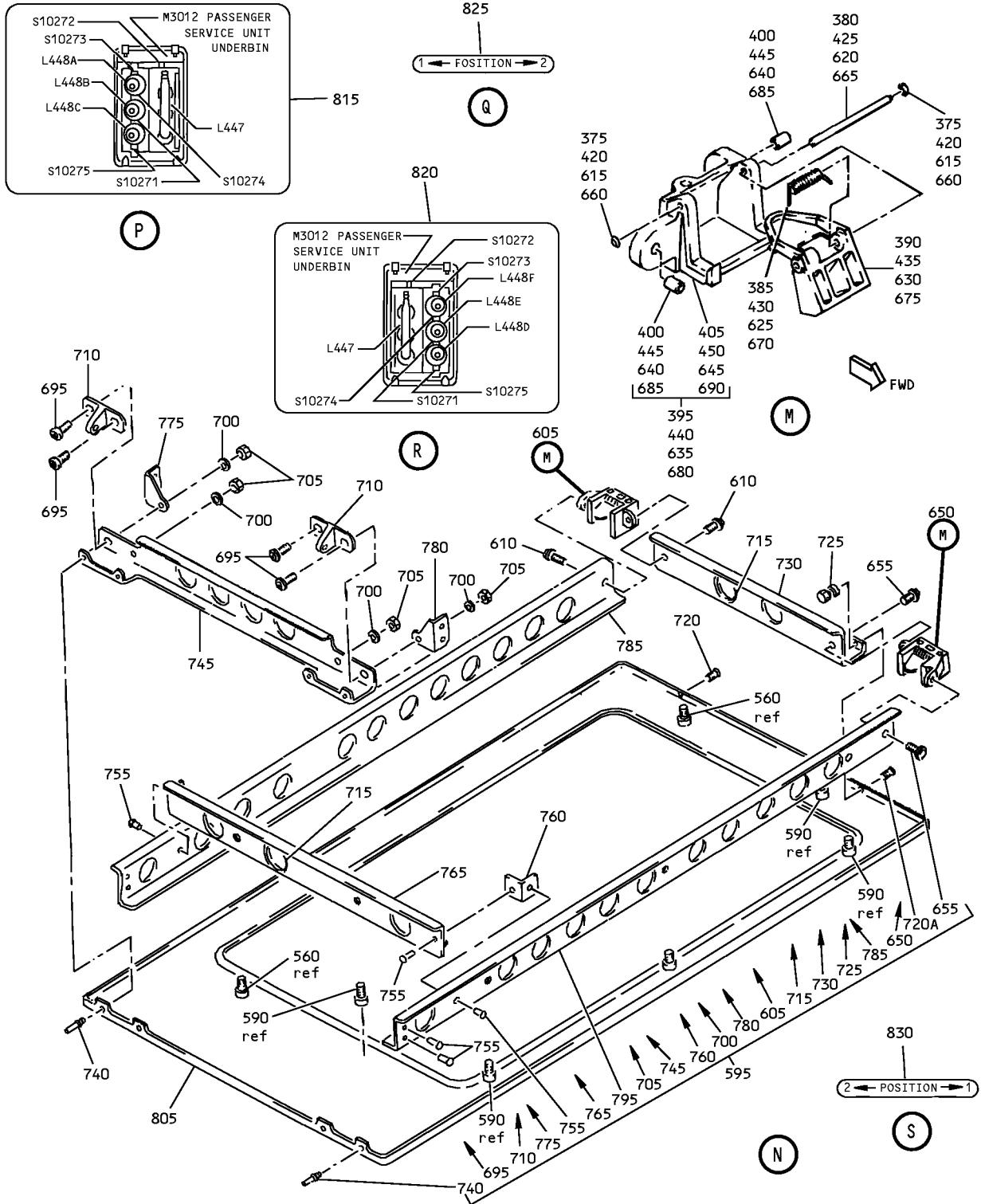
**25-23-36**

ILLUSTRATED PARTS LIST

Page 1021

Jul 01/2007

**COMPONENT MAINTENANCE MANUAL**



Aft Partial Underbin Passenger (with Gaspsers) Service Unit Assembly  
IPL Figure 1 (Sheet 5 of 5)

**25-23-36**

ILLUSTRATED PARTS LIST

Page 1022

Jul 01/2007



## COMPONENT MAINTENANCE MANUAL

| FIG/<br>ITEM | PART NUMBER    | AIRLINE<br>PART<br>NUMBER | NOMENCLATURE |   |   |   |   |   |   | USAGE<br>CODE | UNITS<br>PER<br>ASSY |
|--------------|----------------|---------------------------|--------------|---|---|---|---|---|---|---------------|----------------------|
|              |                |                           | 1            | 2 | 3 | 4 | 5 | 6 | 7 |               |                      |
| 1-           |                |                           |              |   |   |   |   |   |   |               |                      |
| -1           | 417N3100-135SP |                           |              |   |   |   |   |   |   | A             | RF                   |
|              |                |                           |              |   |   |   |   |   |   |               |                      |
| -1A          | 417N3100-537SP |                           |              |   |   |   |   |   |   | B             | RF                   |
|              |                |                           |              |   |   |   |   |   |   |               |                      |
| -1B          | 417N3100-541SP |                           |              |   |   |   |   |   |   | D             | RF                   |
|              |                |                           |              |   |   |   |   |   |   |               |                      |
| -1C          | 417N3100-543SP |                           |              |   |   |   |   |   |   | F             | RF                   |
|              |                |                           |              |   |   |   |   |   |   |               |                      |
| -1D          | 417N3100-619SP |                           |              |   |   |   |   |   |   | H             | RF                   |
|              |                |                           |              |   |   |   |   |   |   |               |                      |
| -1E          | 417N3100-635SP |                           |              |   |   |   |   |   |   | J             | RF                   |
|              |                |                           |              |   |   |   |   |   |   |               |                      |
| -1F          | 417N3100-711SP |                           |              |   |   |   |   |   |   | M             | RF                   |
|              |                |                           |              |   |   |   |   |   |   |               |                      |
| -1G          | 417N3100-715SP |                           |              |   |   |   |   |   |   | P             | RF                   |
|              |                |                           |              |   |   |   |   |   |   |               |                      |
| -1H          | 417N3100-747SP |                           |              |   |   |   |   |   |   |               |                      |

-Item not Illustrated

# 25-23-36

ILLUSTRATED PARTS LIST

Page 1023

Jul 01/2007





## COMPONENT MAINTENANCE MANUAL

| FIG/<br>ITEM | PART NUMBER    | AIRLINE<br>PART<br>NUMBER | NOMENCLATURE |   |   |   |   |   |   | USAGE<br>CODE | UNITS<br>PER<br>ASSY |
|--------------|----------------|---------------------------|--------------|---|---|---|---|---|---|---------------|----------------------|
|              |                |                           | 1            | 2 | 3 | 4 | 5 | 6 | 7 |               |                      |
| 1-           |                |                           |              |   |   |   |   |   |   |               |                      |
| -1J          | 417N3100-747B  |                           |              |   |   |   |   |   |   | S             | RF                   |
|              |                |                           |              |   |   |   |   |   |   |               |                      |
| -5           | 417N3100-136SP |                           |              |   |   |   |   |   |   | N             | RF                   |
|              |                |                           |              |   |   |   |   |   |   |               |                      |
| -5A          | 417N3100-538SP |                           |              |   |   |   |   |   |   | C             | RF                   |
|              |                |                           |              |   |   |   |   |   |   |               |                      |
| -5B          | 417N3100-542SP |                           |              |   |   |   |   |   |   | E             | RF                   |
|              |                |                           |              |   |   |   |   |   |   |               |                      |
| -5C          | 417N3100-544SP |                           |              |   |   |   |   |   |   | G             | RF                   |
|              |                |                           |              |   |   |   |   |   |   |               |                      |
| -5D          | 417N3100-620SP |                           |              |   |   |   |   |   |   | K             | RF                   |
|              |                |                           |              |   |   |   |   |   |   |               |                      |
| -5E          | 417N3100-636SP |                           |              |   |   |   |   |   |   | L             | RF                   |
|              |                |                           |              |   |   |   |   |   |   |               |                      |
| -5F          | 417N3100-710SP |                           |              |   |   |   |   |   |   | Q             | RF                   |
|              |                |                           |              |   |   |   |   |   |   |               |                      |
| -5G          | 417N3100-716SP |                           |              |   |   |   |   |   |   | R             | RF                   |
|              |                |                           |              |   |   |   |   |   |   |               |                      |
| -5H          | 417N3100-746SP |                           |              |   |   |   |   |   |   |               |                      |

-Item not Illustrated

# 25-23-36

ILLUSTRATED PARTS LIST

Page 1024

Jul 01/2007



## COMPONENT MAINTENANCE MANUAL

| FIG/<br>ITEM | PART NUMBER   | AIRLINE<br>PART<br>NUMBER | NOMENCLATURE |   |   |   |   |   |   | USAGE<br>CODE | UNITS<br>PER<br>ASSY |
|--------------|---------------|---------------------------|--------------|---|---|---|---|---|---|---------------|----------------------|
|              |               |                           | 1            | 2 | 3 | 4 | 5 | 6 | 7 |               |                      |
| 1-           |               |                           |              |   |   |   |   |   |   |               |                      |
| -5J          | 417N3100-746B |                           |              |   |   |   |   |   |   | T             | RF                   |
|              |               |                           |              |   |   |   |   |   |   |               |                      |
| 10           | 920056        |                           |              |   |   |   |   |   |   |               | 3                    |
| 15           | VIP720-1B     |                           |              |   |   |   |   |   |   | A, H, K,<br>N | 3                    |
| -15A         | VIP720-1C     |                           |              |   |   |   |   |   |   | A, H, K,<br>N | 3                    |
| -15B         | VIP720-6E     |                           |              |   |   |   |   |   |   | A, H, K,<br>N | 3                    |
| -15C         | VIP720-6F     |                           |              |   |   |   |   |   |   |               |                      |
| -15D         | VIP720-6G     |                           |              |   |   |   |   |   |   | A, H, K,<br>N | 3                    |
| -15E         | VIP720-6J     |                           |              |   |   |   |   |   |   |               |                      |
| -15F         | VIP720-6K     |                           |              |   |   |   |   |   |   |               |                      |
| -15G         | VIP720-6L     |                           |              |   |   |   |   |   |   | A, H, K,<br>N | 3                    |
| -15H         | S417N304-1M   |                           |              |   |   |   |   |   |   |               |                      |
| -15J         | S417N304-1B   |                           |              |   |   |   |   |   |   |               |                      |
| -15K         | S417N304-1A   |                           |              |   |   |   |   |   |   |               |                      |
| -15L         | S417N304-1N   |                           |              |   |   |   |   |   |   |               |                      |

-Item not Illustrated

# 25-23-36

ILLUSTRATED PARTS LIST

Page 1025

Jul 01/2007



## COMPONENT MAINTENANCE MANUAL

| FIG/<br>ITEM | PART NUMBER | AIRLINE<br>PART<br>NUMBER | NOMENCLATURE |   |   |   |   |   |   | USAGE<br>CODE | UNITS<br>PER<br>ASSY |   |   |   |   |  |               |   |
|--------------|-------------|---------------------------|--------------|---|---|---|---|---|---|---------------|----------------------|---|---|---|---|--|---------------|---|
|              |             |                           | 1            | 2 | 3 | 4 | 5 | 6 | 7 |               |                      |   |   |   |   |  |               |   |
| 1-           |             |                           |              |   |   |   |   |   |   |               |                      |   |   |   |   |  |               |   |
| -15M         | S417N304-1P |                           | .            | L | E | N | - | L | T | S             | W                    | I | T | C | H |  | A, H, K,<br>N | 3 |
|              |             |                           |              |   |   |   |   |   |   |               |                      |   |   |   |   |  |               |   |
| -15N         | S417N304-1R |                           | .            | L | E | N | - | L | T | S             | W                    | I | T | C | H |  | A, H, K,<br>N | 3 |
|              |             |                           |              |   |   |   |   |   |   |               |                      |   |   |   |   |  |               |   |
| -15P         | S417N304-1S |                           |              |   |   |   |   |   |   |               |                      |   |   |   |   |  |               |   |
| -15Q         | S417N304-6D |                           |              |   |   |   |   |   |   |               |                      |   |   |   |   |  |               |   |
| -15R         | S417N304-6H |                           | .            | L | E | N | - | L | T | S             | W                    | I | T | C | H |  | A, H, K,<br>N | 3 |
|              |             |                           |              |   |   |   |   |   |   |               |                      |   |   |   |   |  |               |   |
| -15S         | S417N304-6M |                           |              |   |   |   |   |   |   |               |                      |   |   |   |   |  |               |   |
| -15T         | VIP720-1M   |                           | .            | L | E | N | - | L | T | S             | W                    | I | T | C | H |  | A, H, K,<br>N | 3 |
|              |             |                           |              |   |   |   |   |   |   |               |                      |   |   |   |   |  |               |   |
| -15U         | VIP720-1A   |                           | .            | L | E | N | - | L | T | S             | W                    | I | T | C | H |  | A, H, K,<br>N | 3 |
|              |             |                           |              |   |   |   |   |   |   |               |                      |   |   |   |   |  |               |   |
| -15V         | VIP270-1N   |                           | .            | L | E | N | - | L | T | S             | W                    | I | T | C | H |  | A, H, K,<br>N | 3 |
|              |             |                           |              |   |   |   |   |   |   |               |                      |   |   |   |   |  |               |   |
| -15W         | VIP720-1S   |                           | .            | L | E | N | - | L | T | S             | W                    | I | T | C | H |  | A, H, K,<br>N | 3 |
|              |             |                           |              |   |   |   |   |   |   |               |                      |   |   |   |   |  |               |   |
| -15X         | VIP720-6M   |                           | .            | L | E | N | - | L | T | S             | W                    | I | T | C | H |  | A, H, K,<br>N | 3 |
|              |             |                           |              |   |   |   |   |   |   |               |                      |   |   |   |   |  |               |   |

-Item not Illustrated

# 25-23-36

ILLUSTRATED PARTS LIST

Page 1026

Jul 01/2007





## COMPONENT MAINTENANCE MANUAL

| FIG/<br>ITEM | PART NUMBER | AIRLINE<br>PART<br>NUMBER | NOMENCLATURE |   |   |   |   |   |   | USAGE<br>CODE | UNITS<br>PER<br>ASSY |   |   |   |   |   |   |  |               |   |
|--------------|-------------|---------------------------|--------------|---|---|---|---|---|---|---------------|----------------------|---|---|---|---|---|---|--|---------------|---|
|              |             |                           | 1            | 2 | 3 | 4 | 5 | 6 | 7 |               |                      |   |   |   |   |   |   |  |               |   |
| 1-<br>-25B   | VIP720-2E   |                           | .            | L | E | N | S | - | C | A             | L                    | S | W | I | T | C | H |  | A, H, K,<br>N | 1 |
|              |             |                           |              |   |   |   |   |   |   |               |                      |   |   |   |   |   |   |  |               |   |
| -25C         | VIP720-2F   |                           | .            | L | E | N | S | - | C | A             | L                    | S | W | I | T | C | H |  | A, H, K,<br>N | 1 |
|              |             |                           |              |   |   |   |   |   |   |               |                      |   |   |   |   |   |   |  |               |   |
| -25D         | VIP720-2G   |                           | .            | L | E | N | S | - | C | A             | L                    | S | W | I | T | C | H |  | A, H, K,<br>N | 1 |
|              |             |                           |              |   |   |   |   |   |   |               |                      |   |   |   |   |   |   |  |               |   |
| -25E         | VIP720-3A   |                           | .            | L | E | N | S | - | C | A             | L                    | S | W | I | T | C | H |  | A, H, K,<br>N | 1 |
|              |             |                           |              |   |   |   |   |   |   |               |                      |   |   |   |   |   |   |  |               |   |
| -25F         | VIP720-4A   |                           | .            | L | E | N | S | - | C | A             | L                    | S | W | I | T | C | H |  | A, H, K,<br>N | 1 |
|              |             |                           |              |   |   |   |   |   |   |               |                      |   |   |   |   |   |   |  |               |   |
| -25G         | S417N303-3C |                           |              |   |   |   |   |   |   |               |                      |   |   |   |   |   |   |  |               |   |
| -25H         | S417N303-2C |                           |              |   |   |   |   |   |   |               |                      |   |   |   |   |   |   |  |               |   |
| -25J         | S417N303-2A |                           |              |   |   |   |   |   |   |               |                      |   |   |   |   |   |   |  |               |   |
| -25K         | S417N303-2B |                           |              |   |   |   |   |   |   |               |                      |   |   |   |   |   |   |  |               |   |
| -25L         | S417N303-2H |                           | .            | L | E | N | S | - | C | A             | L                    | S | W | I | T | C | H |  | A, H, K,<br>N | 1 |
|              |             |                           |              |   |   |   |   |   |   |               |                      |   |   |   |   |   |   |  |               |   |
| -25M         | S417N303-2J |                           |              |   |   |   |   |   |   |               |                      |   |   |   |   |   |   |  |               |   |
| -25N         | S417N303-2K |                           |              |   |   |   |   |   |   |               |                      |   |   |   |   |   |   |  |               |   |
| -25P         | S417N303-2L |                           |              |   |   |   |   |   |   |               |                      |   |   |   |   |   |   |  |               |   |
| -25Q         | S417N303-3B |                           | .            | L | E | N | S | - | C | A             | L                    | S | W | I | T | C | H |  | A, N          | 1 |
|              |             |                           |              |   |   |   |   |   |   |               |                      |   |   |   |   |   |   |  |               |   |

-Item not Illustrated

**25-23-36**

ILLUSTRATED PARTS LIST

Page 1028

Jul 01/2007



## COMPONENT MAINTENANCE MANUAL

| FIG/<br>ITEM | PART NUMBER | AIRLINE<br>PART<br>NUMBER | NOMENCLATURE |   |   |   |   |   |   | USAGE<br>CODE | UNITS<br>PER<br>ASSY |   |   |   |   |   |  |                 |   |
|--------------|-------------|---------------------------|--------------|---|---|---|---|---|---|---------------|----------------------|---|---|---|---|---|--|-----------------|---|
|              |             |                           | 1            | 2 | 3 | 4 | 5 | 6 | 7 |               |                      |   |   |   |   |   |  |                 |   |
| 1-           |             |                           |              |   |   |   |   |   |   |               |                      |   |   |   |   |   |  |                 |   |
| -25R         | VIP720-2A   |                           | .            | L | E | N | - | C | A | L             | L                    | S | W | I | C | H |  | A, H, K,<br>N   | 1 |
|              |             |                           |              |   |   |   |   |   |   |               |                      |   |   |   |   |   |  |                 |   |
| -25S         | VIP720-2B   |                           | .            | L | E | N | - | C | A | L             | L                    | S | W | I | C | H |  | A, H, K,<br>N   | 1 |
|              |             |                           |              |   |   |   |   |   |   |               |                      |   |   |   |   |   |  |                 |   |
| -25T         | VIP720-3B   |                           |              |   |   |   |   |   |   |               |                      |   |   |   |   |   |  |                 |   |
| -25U         | VIP720-3C   |                           | .            | L | E | N | - | C | A | L             | L                    | S | W | I | C | H |  | A, H, K,<br>N   | 1 |
|              |             |                           |              |   |   |   |   |   |   |               |                      |   |   |   |   |   |  |                 |   |
| -25V         | VIP720-2K   |                           | .            | L | E | N | - | C | A | L             | L                    | S | W | I | C | H |  | A, H, K,<br>N   | 1 |
|              |             |                           |              |   |   |   |   |   |   |               |                      |   |   |   |   |   |  |                 |   |
| -25W         | VIP720-2J   |                           | .            | L | E | N | - | C | A | L             | L                    | S | W | I | C | H |  | A, H, K,<br>N   | 1 |
|              |             |                           |              |   |   |   |   |   |   |               |                      |   |   |   |   |   |  |                 |   |
| -25X         | VIP720-2L   |                           | .            | L | E | N | - | C | A | L             | L                    | S | W | I | C | H |  | A, H, K,<br>N   | 1 |
|              |             |                           |              |   |   |   |   |   |   |               |                      |   |   |   |   |   |  |                 |   |
| 30           | 417N3100-5  |                           | .            | F | A | S | T | E | N | E             | R                    | A | S | S |   |   |  | A               | 1 |
|              |             |                           |              |   |   |   |   |   |   |               |                      |   |   |   |   |   |  |                 |   |
| -30A         | 417N3100-85 |                           | .            | F | A | S | T | E | N | E             | R                    | A | S | S |   |   |  | A               | 1 |
|              |             |                           |              |   |   |   |   |   |   |               |                      |   |   |   |   |   |  |                 |   |
| -30B         | 417N3100-85 |                           | .            | F | A | S | T | E | N | E             | R                    | A | S | S |   |   |  | B, D, F, J      | 1 |
|              |             |                           |              |   |   |   |   |   |   |               |                      |   |   |   |   |   |  |                 |   |
| -30C         | 417N3100-87 |                           | .            | F | A | S | T | E | N | E             | R                    | A | S | S |   |   |  | H, K, M,<br>P-T | 1 |
|              |             |                           |              |   |   |   |   |   |   |               |                      |   |   |   |   |   |  |                 |   |
| -35          | 417N3100-6  |                           | .            | F | A | S | T | E | N | E             | R                    | A | S | S |   |   |  | N               | 1 |
|              |             |                           |              |   |   |   |   |   |   |               |                      |   |   |   |   |   |  |                 |   |

-Item not Illustrated

# 25-23-36

ILLUSTRATED PARTS LIST

Page 1029

Jul 01/2007





COMPONENT MAINTENANCE MANUAL

| FIG/<br>ITEM | PART NUMBER  | AIRLINE<br>PART<br>NUMBER | NOMENCLATURE |                            |   |   |   |   |      | USAGE<br>CODE | UNITS<br>PER<br>ASSY |
|--------------|--------------|---------------------------|--------------|----------------------------|---|---|---|---|------|---------------|----------------------|
|              |              |                           | 1            | 2                          | 3 | 4 | 5 | 6 | 7    |               |                      |
| 1-<br>-49B   | G6940-3B3J   |                           | . .          | GROMMET                    |   |   |   |   |      | A, N          | 2                    |
|              |              |                           |              | (V75345)                   |   |   |   |   |      |               |                      |
|              |              |                           |              | (SPEC BACG20AF3B3J)        |   |   |   |   |      |               |                      |
|              |              |                           |              | (OPT SZ6924-3B3J (V95272)) |   |   |   |   |      |               |                      |
|              |              |                           |              | (OPT 701-3B3J (V07096))    |   |   |   |   |      |               |                      |
|              |              |                           |              | (OPT E3B3J (V60980))       |   |   |   |   |      |               |                      |
|              |              |                           |              | (OPT H3B3J (V60980))       |   |   |   |   |      |               |                      |
|              |              |                           |              | (OPT RR2002-3B3J (V57268)) |   |   |   |   |      |               |                      |
|              |              |                           |              | (OPT ITEM 49, 49A, 49C)    |   |   |   |   |      |               |                      |
|              |              |                           |              | (USED ON ITEMS 30, 35)     |   |   |   |   |      |               |                      |
| -49C         | G6940-3B3    |                           | . .          | GROMMET                    |   |   |   |   |      | A, N          | 2                    |
|              |              |                           |              | (V75345)                   |   |   |   |   |      |               |                      |
|              |              |                           |              | (SPEC BACG20AF3B3)         |   |   |   |   |      |               |                      |
|              |              |                           |              | (OPT SZ6924-3B3 (V95272))  |   |   |   |   |      |               |                      |
|              |              |                           |              | (OPT 701-3B3 (V07096))     |   |   |   |   |      |               |                      |
|              |              |                           |              | (OPT E3B3 (V60980))        |   |   |   |   |      |               |                      |
|              |              |                           |              | (OPT H3B3 (V60980))        |   |   |   |   |      |               |                      |
|              |              |                           |              | (OPT RR2002-3B3 (V57268))  |   |   |   |   |      |               |                      |
|              |              |                           |              | (OPT ITEM 49, 49A, 49B)    |   |   |   |   |      |               |                      |
|              |              |                           |              | (USED ON ITEMS 30, 35)     |   |   |   |   |      |               |                      |
| 50           | BACN10YJ08   |                           | . .          | NUT                        |   |   |   |   |      | A, N          | 2                    |
|              |              |                           |              | (USED ON ITEMS 30, 35)     |   |   |   |   |      |               |                      |
| 53           | BACS12FA08K5 |                           | . .          | SCREW                      |   |   |   |   |      |               | 2                    |
| 54           | BACN10YJ08   |                           | . .          | NUT                        |   |   |   |   |      |               | 2                    |
| 55           | 417N3122-14  |                           | . .          | ANGLE-SPRT                 |   |   |   |   |      |               | 2                    |
| 60           | BACS12FA08K5 |                           | . .          | SCREW                      |   |   |   |   | A, N |               | 2                    |
|              |              |                           |              | (USED ON ITEMS 30, 35)     |   |   |   |   |      |               |                      |
| 65           | BACN10YJ08   |                           | . .          | NUT                        |   |   |   |   | A, N |               | 2                    |
|              |              |                           |              | (USED ON ITEMS 30, 35)     |   |   |   |   |      |               |                      |
| 70           | 417N3122-14  |                           | . .          | ANGLE-SPRT                 |   |   |   |   | A, N |               | 2                    |
|              |              |                           |              | (USED ON ITEMS 30, 35)     |   |   |   |   |      |               |                      |
| 75           | 417N3122-107 |                           | . .          | ANGLE ASSY                 |   |   |   |   | A    |               | 1                    |
|              |              |                           |              | (USED ON ITEM 30)          |   |   |   |   |      |               |                      |
| -80          | 417N3122-108 |                           | . .          | ANGLE ASSY                 |   |   |   |   | N    |               | 1                    |
|              |              |                           |              | (USED ON ITEM 35)          |   |   |   |   |      |               |                      |
|              |              |                           |              | ATTACHING PARTS            |   |   |   |   |      |               |                      |
| 85           | BACS12FA08K5 |                           | . .          | SCREW                      |   |   |   |   | A, N |               | 2                    |
| 90           | BACN10YJ08   |                           | . .          | NUT                        |   |   |   |   | A, N |               | 2                    |
|              |              |                           |              | -----*                     |   |   |   |   |      |               |                      |
| 95           | BACS21AQ2A3P |                           |              | DELETED                    |   |   |   |   |      |               |                      |

-Item not Illustrated

**25-23-36**

ILLUSTRATED PARTS LIST

Page 1031

Jul 01/2007





## COMPONENT MAINTENANCE MANUAL

| FIG/<br>ITEM | PART NUMBER  | AIRLINE<br>PART<br>NUMBER | NOMENCLATURE |   |   |   |   |   |  | USAGE<br>CODE                   | UNITS<br>PER<br>ASSY |
|--------------|--------------|---------------------------|--------------|---|---|---|---|---|--|---------------------------------|----------------------|
|              |              |                           | 1            | 2 | 3 | 4 | 5 | 6 | 7  |                                 |                      |
| 1-           |              |                           |              |   |   |   |   |   |  |                                 |                      |
| 95A          | BACS21AQ2A3K |                           |              |   |   |   |   |   | . . . STUD                                       | A, N                            | 2                    |
| 100          | 417N3122-109 |                           |              |   |   |   |   |   | . . . ANGLE                                      | A                               | 1                    |
| -105         | 417N3122-110 |                           |              |   |   |   |   |   | . . . ANGLE                                      | N                               | 1                    |
| 110          | 417N3122-71  |                           |              |   |   |   |   |   | . . ANGLE ASSY<br>(USED ON ITEMS 30, 35)         | A, N                            | 1                    |
|              |              |                           |              |   |   |   |   |   | ATTACHING PARTS                                  |                                 |                      |
| 115          | BACS12FA08K5 |                           |              |   |   |   |   |   | . . SCREW  | A, N                            | 2                    |
| 120          | BACN10YJ08   |                           |              |   |   |   |   |   | . . NUT  | A, N                            | 4                    |
|              |              |                           |              |   |   |   |   |   | ----- * -----                                    |                                 |                      |
| 125          | BACS21AQ2A3P |                           |              |   |   |   |   |   | DELETED  |                                 |                      |
| 125A         | BACS21AQ2A3K |                           |              |   |   |   |   |   | . . . STUD                                       | A, N                            | 2                    |
| 130          | 417N3122-72  |                           |              |   |   |   |   |   | . . . ANGLE                                      | A, N                            | 1                    |
| 135          | 417N3122-60  |                           |              |   |   |   |   |   | . . BRACKET ASSY                                 |                                 | 1                    |
|              |              |                           |              |   |   |   |   |   | ATTACHING PARTS                                  |                                 |                      |
| 140          | 66-25727-1   |                           |              |   |   |   |   |   | . . SHIM<br>(USED ON ITEMS 30, 35)               | A, N                            | 1                    |
| 145          | 66-25727-2   |                           |              |   |   |   |   |   | . . SHIM<br>(USED ON ITEMS 30, 35)               | A, N                            | 1                    |
| 150          | BACN10YJ08   |                           |              |   |   |   |   |   | . . NUT  |                                 | 1                    |
|              |              |                           |              |   |   |   |   |   | ----- * -----                                    |                                 |                      |
| 155          | 82-47-108-15 |                           |              |   |   |   |   |   | . . . CLIP<br>(V84483)                           |                                 | 1                    |
| 160          | BACS21AQ2A3P |                           |              |   |   |   |   |   | DELETED  |                                 |                      |
| 160A         | BACS21AQ2A3K |                           |              |   |   |   |   |   | . . . STUD<br>(OPT ITEM 160B)                    |                                 | 1                    |
| -160B        | FHS832-6     |                           |              |   |   |   |   |   | . . . STUD<br>(OPT ITEM 160)                     |                                 | 1                    |
| 165          | 417N3122-61  |                           |              |   |   |   |   |   | . . . BRACKET<br>(OPT ITEM 165A)                 |                                 | 1                    |
| -165A        | 417N3122-130 |                           |              |   |   |   |   |   | . . . BRACKET<br>(OPT ITEM 165A)                 |                                 | 1                    |
| 170          | 10-1006-1    |                           |              |   |   |   |   |   | . LIGHT-READING<br>(V72914)<br>(SPEC S417N302-1) | A, B, D,<br>F, H, J,<br>M, P, S | 1                    |

-Item not Illustrated

**25-23-36**

ILLUSTRATED PARTS LIST

Page 1032

Jul 01/2007



## COMPONENT MAINTENANCE MANUAL

| FIG/<br>ITEM | PART NUMBER    | AIRLINE<br>PART<br>NUMBER | NOMENCLATURE |   |   |   |   |   |   | USAGE<br>CODE                   | UNITS<br>PER<br>ASSY |
|--------------|----------------|---------------------------|--------------|---|---|---|---|---|---|---------------------------------|----------------------|
|              |                |                           | 1            | 2   | 3 | 4 | 5 | 6 | 7 |                                 |                      |
| 1-           |                |                           |              |   |   |   |   |   |   |                                 |                      |
| -175         | 10-1006-2      |                           | .            | LIGHT-READING                               |   |   |   |   |   | C, E, G,<br>K, L, N,<br>Q, R, T | 1                    |
|              |                |                           |              | (V72914)                                    |   |   |   |   |   |                                 |                      |
|              |                |                           |              | (SPEC S417N302-2)                           |   |   |   |   |   |                                 |                      |
| 180          | 417N3100-25SP  |                           | .            | AIR ASSY-GASPER                             |   |   |   |   |   | A-C, F,<br>G, N, P,<br>R        | 1                    |
| -180A        | 417N3100-26    |                           | .            | AIR ASSY-GASPER                             |   |   |   |   |   | D, E                            | 1                    |
| -180B        | 417N3100-199SP |                           | .            | AIR ASSY-GASPER                             |   |   |   |   |   | J, L                            | 1                    |
| 185          | B0E20563A152   |                           | . .          | DUCT  |   |   |   |   |   | A-G, N,<br>P, R                 | 1                    |
|              |                |                           |              | (V16632)                                    |   |   |   |   |   |                                 |                      |
|              |                |                           |              | (SPEC BACD40P3A120)                         |   |   |   |   |   |                                 |                      |
| -185A        | B0E20563A180   |                           | . .          | DUCT  |   |   |   |   |   | J, L                            | 1                    |
|              |                |                           |              | (V16632)                                    |   |   |   |   |   |                                 |                      |
|              |                |                           |              | (SPEC BACD40P3A180)                         |   |   |   |   |   |                                 |                      |
| 187          | 65C31432-1     |                           | . .          | WASHER                                      |   |   |   |   |   | D, E                            | AR                   |
| 190          | 10-60141-23    |                           |              | DELETED                                     |   |   |   |   |   |                                 |                      |
| 190A         | 10-60141-23A   |                           |              | DELETED                                     |   |   |   |   |   |                                 |                      |
| 190B         | 10-60141-23T   |                           | . .          | OUTLET-AIR                                  |   |   |   |   |   | A-C, F,<br>G, J, L,<br>N, P, R  | 3                    |
|              |                |                           |              | (COLOR OPT-CUST PREFERENCE,<br>BEIGE)       |   |   |   |   |   |                                 |                      |
| -190C        | 10-60141-23U   |                           |              | DELETED                                     |   |   |   |   |   |                                 |                      |
| -190D        | 750801-002     |                           | . .          | OUTLET                                      |   |   |   |   |   | A-C, F,<br>G, J, L,<br>N, P, R  | 3                    |
|              |                |                           |              | (COLOR OPT-CUST PREFERENCE,<br>BEIGE)       |   |   |   |   |   |                                 |                      |
|              |                |                           |              | (V28406)                                    |   |   |   |   |   |                                 |                      |
|              |                |                           |              | (SPEC 10-60141-23S)                         |   |   |   |   |   |                                 |                      |
| -190E        | 10-60141-25    |                           | . .          | OUTLET                                      |   |   |   |   |   | D, E                            | 3                    |
| -190F        | L16999-16C     |                           | . .          | OUTLET                                      |   |   |   |   |   | A-C, F,<br>G, J, L,<br>N, P, R  | 3                    |
|              |                |                           |              | (COLOR OPT-CUST PREFERENCE,<br>ZYTEL WT-07) |   |   |   |   |   |                                 |                      |
|              |                |                           |              | (V17744)                                    |   |   |   |   |   |                                 |                      |
|              |                |                           |              | (SPEC 10-60141-23A)                         |   |   |   |   |   |                                 |                      |
|              |                |                           |              | (OPT 1707-23A (V83564))                     |   |   |   |   |   |                                 |                      |
| -190G        | 3740-3         |                           | . .          | OUTLET-AIR                                  |   |   |   |   |   | A-C, F,<br>G, J, L,<br>N, P, R  | 3                    |
|              |                |                           |              | (COLOR OPT-CUST PREFERENCE,<br>DARK GRAY)   |   |   |   |   |   |                                 |                      |
|              |                |                           |              | (V83564)                                    |   |   |   |   |   |                                 |                      |
|              |                |                           |              | (SPEC 10-60141-23U)                         |   |   |   |   |   |                                 |                      |

-Item not Illustrated

# 25-23-36

ILLUSTRATED PARTS LIST

Page 1033

Jul 01/2007



## COMPONENT MAINTENANCE MANUAL

| FIG/<br>ITEM | PART NUMBER  | AIRLINE<br>PART<br>NUMBER | NOMENCLATURE |   |  |   |   |   |                       | USAGE<br>CODE | UNITS<br>PER<br>ASSY |
|--------------|--------------|---------------------------|--------------|---|--|---|---|---|-----------------------|---------------|----------------------|
|              |              |                           | 1            | 2 | 3  | 4 | 5 | 6 | 7                     |               |                      |
| 1-           |              |                           |              |   |  |   |   |   |                       |               |                      |
| 195          | PLT2MM       |                           | .            | . | STRAP<br>(V06383)<br>(OPT ITEM 195A)   |   |   |   |                       |               | 3                    |
| -195A        | PLT2MM2      |                           | .            | . | STRAP<br>(V06383)<br>(OPT ITEM 195)  |   |   |   |                       |               | 3                    |
| 200          | 417N3103-1   |                           | .            | . | MANIFOLD ASSY  |   |   |   |                       |               | 1                    |
| 205          | 417N3063-4   |                           | .            | . | CONNECTOR  |   |   |   |                       |               | 1                    |
| 210          | 417N3105-4SP |                           | .            | . | MODULE ASSY-SVCE<br>(REPLACED BY ITEM 210A)  |   |   |   | A, N                  |               | 1                    |
| -210A        | 417N3105-6SP |                           | .            | . | MODULE ASSY-SVCE<br>(REPLACES ITEM 210)  |   |   |   | A, N                  |               | 1                    |
| -210B        | 417N3105-6SP |                           | .            | . | MODULE ASSY-SVCE   |   |   |   | B-G, J, L,<br>P, R    |               | 1                    |
| 210C         | 417N3105-5SP |                           | .            | . | MODULE ASSY-SVCE   |   |   |   | H, K, M,<br>Q         |               | 1                    |
| -210D        | 417N3105-5D  |                           | .            | . | MODULE ASSY-SVCE   |   |   |   | S, T                  |               | 1                    |
| -215         | BACS21AQ6A6M |                           | .            | . | STUD<br>(USED ON ITEMS 210A, 210B, 210C)   |   |   |   |                       |               | 4                    |
| 220          | 417N3122-111 |                           | .            | . | BRACKET ASSY   |   |   |   | A-G, J, L,<br>N, P, R |               | 1                    |
| 225          | 82-47-108-15 |                           | .            | . | CLIP<br>(V84483)   |   |   |   | A-G, J, L,<br>N, P, R |               | 1                    |
| 230          | 417N3122-112 |                           | .            | . | BRACKET  |   |   |   | A-G, J, L,<br>N, P, R |               | 1                    |
| 232          | 417N3122-53  |                           | .            | . | BRACKET  |   |   |   | H, K, M,<br>Q, S, T   |               | 1                    |
| 235          | 417N3101-2SP |                           | .            | . | MODULE   |   |   |   | A-G, J, L,<br>N, P, R |               | 1                    |
| 235A         | 417N3101-1SP |                           | .            | . | MODULE   |   |   |   | H, K, M,<br>Q, S, T   |               | 1                    |
| 240          | 417N3100-71  |                           | .            | . | PAD-SPONGE   |   |   |   |                       |               | 2                    |
| 245          | 417N3190-1   |                           | .            | . | LANYARD ASSY   |   |   |   |                       |               | 1                    |
| 250          | GSC219       |                           | .            | . | SLEEVE<br>(V59730)<br>(SPEC BACS13S219C)<br>(OPT Y0C140 (V09922))<br>(OPT ITEM 250A) |   |   |   |                       |               | 4                    |

-Item not Illustrated

# 25-23-36

ILLUSTRATED PARTS LIST

Page 1034

Jul 01/2007



## COMPONENT MAINTENANCE MANUAL

| FIG/<br>ITEM | PART NUMBER  | AIRLINE<br>PART<br>NUMBER | NOMENCLATURE |   |   |   |   |   |                   | USAGE<br>CODE | UNITS<br>PER<br>ASSY |
|--------------|--------------|---------------------------|--------------|---|---|---|---|---|-------------------|---------------|----------------------|
|              |              |                           | 1            | 2 | 3   | 4 | 5 | 6 | 7                 |               |                      |
| 1-           |              |                           |              |   |   |   |   |   |                   |               |                      |
| -250A        | GSC205       |                           | .            | . | SLEEVE<br>(V59730)<br>(SPEC BACS13S205C)<br>(OPT Y0C130 (V09922))<br>(OPT ITEM 250) |   |   |   |                   |               | 4                    |
| 255          | 10-61790-1   |                           | .            | . | HOOK<br>(V08205)  |   |   |   |                   |               | 1                    |
| 260          | NAS43DD4-5   |                           | .            | . | SPACER  |   |   |   |                   |               | 1                    |
| 265          | 65C16899-6   |                           | .            | . | SPRING  |   |   |   |                   |               | 1                    |
| 270          | 417N3190-3   |                           | .            | . | CORD-NYLON  |   |   |   |                   |               | 1                    |
| 275          | 1TW2-3       |                           | .            |   | SWITCH-TOGGLE<br>(V91929)   |   |   |   | A-G, J, L-<br>T   |               | 1                    |
| -275A        | 2TW2-3       |                           | .            |   | SWITCH-TOGGLE<br>(V91929)   |   |   |   | H, K              |               | 1                    |
| 280          | BACR15BB4D10 |                           | .            |   | RIVET   |   |   |   |                   |               | 2                    |
| 285          | 6100-12      |                           | .            |   | RETAINER<br>(V2X013)  |   |   |   |                   |               | 2                    |
| 290          | 417N3180-1   |                           | .            |   | CLAMP ASSY  |   |   |   |                   |               | 2                    |
| 295          | NAS607-2-8P  |                           | .            | . | PIN-DOWEL   |   |   |   |                   |               | 1                    |
| 300          | NAS607-1-4P  |                           | .            | . | PIN-DOWEL   |   |   |   |                   |               | 2                    |
| 305          | 417N3181-1   |                           | .            | . | LINK-ROCKER<br>(OPT ITEM 305A)  |   |   |   |                   |               | 1                    |
| -305A        | 65-85902-1   |                           | .            | . | LINK-ROCKER<br>(OPT ITEM 305)   |   |   |   |                   |               | 1                    |
| 310          | 65-85905-4   |                           | .            | . | PLUNGER   |   |   |   |                   |               | 1                    |
| 315          | RCS3290      |                           | .            | . | SPRING<br>(V08205)  |   |   |   |                   |               | 1                    |
| 320          | 417N3182-1   |                           | .            | . | BODY-PLUNGER  |   |   |   |                   |               | 1                    |
| 325          | 417N3180-3   |                           | .            | . | PLUNGER-SPR   |   |   |   |                   |               | 1                    |
| 330          | RCS3289      |                           | .            | . | SPRING<br>(V08205)  |   |   |   |                   |               | 2                    |
| 335          | 417N3183-1   |                           | .            | . | BODY-CLAMP  |   |   |   |                   |               | 1                    |
| -340         | AN960JD416L  |                           | .            |   | WASHER<br>(USED WITH ITEM 345)  |   |   |   | A-E, H,<br>K, M-T |               | AR                   |
| -340A        | AN960JD416L  |                           | .            |   | WASHER<br>(USED WITH ITEM 345A)   |   |   |   | F, G, J, L        |               | 4                    |

-Item not Illustrated

**25-23-36**

ILLUSTRATED PARTS LIST

Page 1035

Jul 01/2007



## COMPONENT MAINTENANCE MANUAL

| FIG/<br>ITEM | PART NUMBER   | AIRLINE<br>PART<br>NUMBER | NOMENCLATURE |                                      |   |   |   |   |   | USAGE<br>CODE     | UNITS<br>PER<br>ASSY |
|--------------|---------------|---------------------------|--------------|--------------------------------------|---|---|---|---|---|-------------------|----------------------|
|              |               |                           | 1            | 2                                    | 3 | 4 | 5 | 6 | 7 |                   |                      |
| 1-           |               |                           |              |                                      |   |   |   |   |   |                   |                      |
| -345         | PLWP1S        |                           | .            | TIE-PUSH MOUNT CABLE<br>(V58417)     |   |   |   |   |   | A-E, H,<br>K, M-T | AR                   |
| -345A        | PLWP1S        |                           | .            | TIE-PUSH MOUNT CABLE<br>(V58417)     |   |   |   |   |   | F, G, J, L        | 4                    |
| -350         | 61-33500-001  |                           | .            | WIRE BUNDLE                          |   |   |   |   |   | A-E, N            | 1                    |
| -350A        | 61-33500-002  |                           | .            | WIRE BUNDLE<br>(OPT ITEM 350E)       |   |   |   |   |   | F, G              | 1                    |
| -350B        | 286N0512-002  |                           | .            | WIRE BUNDLE                          |   |   |   |   |   | H, J, K, L        | 1                    |
| -350C        | 61-33500-001  |                           | .            | WIRE BUNDLE<br>(OPT ITEM 350D)       |   |   |   |   |   | B-E               | 1                    |
| -350D        | 286N0512-004  |                           | .            | WIRE BUNDLE<br>(OPT ITEM 350C)       |   |   |   |   |   | B-E               | 1                    |
| -350E        | 286N0512-007  |                           | .            | WIRE BUNDLE<br>(OPT ITEM 350A)       |   |   |   |   |   | F, G              | 1                    |
| -350F        | 61-33500-002  |                           | .            | WIRE BUNDLE<br>(OPT ITEM 350G)       |   |   |   |   |   | M, P-R            | 1                    |
| -350G        | 286N0512-008  |                           | .            | WIRE BUNDLE<br>(OPT ITEM 350F)       |   |   |   |   |   | M, P-R            | 1                    |
| -350H        | 288N0174-701  |                           | .            | WIRE BUNDLE                          |   |   |   |   |   | S                 | 1                    |
| -350J        | 288N0210-702  |                           | .            | WIRE BUNDLE                          |   |   |   |   |   | T                 | 1                    |
| 355          | 417N3110-3SP  |                           | .            | FRAME ASSY<br>(REPLACED BY ITEM 580) |   |   |   |   |   | A                 | 1                    |
| -360         | 417N3110-4SP  |                           | .            | FRAME ASSY<br>(REPLACED BY ITEM 585) |   |   |   |   |   | N                 | 1                    |
| 365          | 417N3170-11   |                           | .            | LATCH ASSY                           |   |   |   |   |   | A, N              | 1                    |
|              |               |                           |              | ATTACHING PARTS                      |   |   |   |   |   |                   |                      |
| 370          | BACS12FA08K6  |                           | .            | SCREW                                |   |   |   |   |   | A, N              | 2                    |
|              |               |                           |              | -----*                               |   |   |   |   |   |                   |                      |
| 375          | 6100-9        |                           | .            | RETAINER<br>(V2X013)                 |   |   |   |   |   | A, N              | 2                    |
| 380          | MS20253P2-165 |                           | .            | PIN-DRILLED SHANK                    |   |   |   |   |   | A, N              | 1                    |
| 385          | 417N3173-1    |                           | .            | SPRING                               |   |   |   |   |   | A, N              | 1                    |
| 390          | 417N3171-2    |                           | .            | BOLT-CAM LATCH                       |   |   |   |   |   | A, N              | 1                    |
| 395          | 417N3172-9    |                           | .            | HOUSING ASSY-CAM LATCH               |   |   |   |   |   | A, N              | 1                    |

-Item not Illustrated

# 25-23-36

ILLUSTRATED PARTS LIST

Page 1036

Jul 01/2007





## COMPONENT MAINTENANCE MANUAL

| FIG/<br>ITEM | PART NUMBER   | AIRLINE<br>PART<br>NUMBER | NOMENCLATURE |   |   |   |   |   |   | USAGE<br>CODE             | UNITS<br>PER<br>ASSY |
|--------------|---------------|---------------------------|--------------|---|---|---|---|---|---|---------------------------|----------------------|
|              |               |                           | 1            | 2 | 3 | 4 | 5 | 6 | 7 |                           |                      |
| 1-           |               |                           |              |   |   |   |   |   |   |                           |                      |
| -495         | 417N3121-94   |                           | . .          |   |   |   |   |   |   | N                         | 1                    |
| 500          | CCR274SS3     |                           | . .          |   |   |   |   |   |   | A, N                      | 4                    |
|              |               |                           |              |   |   |   |   |   |   |                           |                      |
|              |               |                           |              |   |   |   |   |   |   |                           |                      |
| 505          | 417N3121-18   |                           | . .          |   |   |   |   |   |   | A, N                      | 1                    |
| 510          | BACR15BB3D    |                           |              |   |   |   |   |   |   |                           |                      |
| 510A         | BACR15BB3AD   |                           | . .          |   |   |   |   |   |   | A, N                      | 7                    |
|              |               |                           |              |   |   |   |   |   |   |                           |                      |
| 515          | 417N3122-1    |                           | . .          |   |   |   |   |   |   | A, N                      | 1                    |
| 520          | 417N3121-121  |                           | . .          |   |   |   |   |   |   | A                         | 1                    |
| -525         | 417N3121-122  |                           | . .          |   |   |   |   |   |   | N                         | 1                    |
| 530          | 417N3122-4    |                           | . .          |   |   |   |   |   |   | A, N                      | 1                    |
| 535          | 417N3122-3    |                           | . .          |   |   |   |   |   |   | A, N                      | 1                    |
| 540          | 417N3121-3    |                           | . .          |   |   |   |   |   |   | A                         | 1                    |
| -545         | 417N3121-4    |                           | . .          |   |   |   |   |   |   | N                         | 1                    |
| 550          | 417N3121-117  |                           | . .          |   |   |   |   |   |   | A                         | 1                    |
| -555         | 417N3121-118  |                           | . .          |   |   |   |   |   |   | N                         | 1                    |
| 560          | SL6189-08-4   |                           | . .          |   |   |   |   |   |   | A, N                      | 7                    |
|              |               |                           |              |   |   |   |   |   |   |                           |                      |
|              |               |                           |              |   |   |   |   |   |   |                           |                      |
| -560A        | 417N3122-6    |                           | . .          |   |   |   |   |   |   | A, N                      | 7                    |
|              |               |                           |              |   |   |   |   |   |   |                           |                      |
| 565          | 417N3111-3SP  |                           | . .          |   |   |   |   |   |   | A                         | 1                    |
| -570         | 417N3111-4SP  |                           | . .          |   |   |   |   |   |   | N                         | 1                    |
| 580          | 417N3110-43SP |                           | . .          |   |   |   |   |   |   | A                         | 1                    |
|              |               |                           |              |   |   |   |   |   |   |                           |                      |
| -580A        | 417N3110-43SP |                           | . .          |   |   |   |   |   |   | B, D, F,<br>H, J, M,<br>P | 1                    |
|              |               |                           |              |   |   |   |   |   |   |                           |                      |
| -580B        | 417N3110-43D  |                           | . .          |   |   |   |   |   |   | S                         | 1                    |
| -585         | 417N3110-44SP |                           | . .          |   |   |   |   |   |   | N                         | 1                    |
|              |               |                           |              |   |   |   |   |   |   |                           |                      |

-Item not Illustrated

# 25-23-36

ILLUSTRATED PARTS LIST

Page 1038

Jul 01/2007



## COMPONENT MAINTENANCE MANUAL

| FIG/<br>ITEM | PART NUMBER   | AIRLINE<br>PART<br>NUMBER | NOMENCLATURE |   |   |   |   |   |   | USAGE<br>CODE | UNITS<br>PER<br>ASSY            |   |
|--------------|---------------|---------------------------|--------------|---|---|---|---|---|---|---------------|---------------------------------|---|
|              |               |                           | 1            | 2 | 3 | 4 | 5 | 6 | 7 |               |                                 |   |
| 1-           |               |                           |              |   |   |   |   |   |   |               |                                 |   |
| -585A        | 417N3110-44SP |                           | .            |   |   |   |   |   |   |               | C, E, G,<br>K, L, Q,<br>R       | 1 |
| -585B        | 417N3110-44D  |                           | .            |   |   |   |   |   |   |               | T                               | 1 |
| 590          | SL6189-08-4   |                           | ..           |   |   |   |   |   |   |               |                                 | 5 |
|              |               |                           |              |   |   |   |   |   |   |               |                                 |   |
| -592         | SL6189-08-6   |                           |              |   |   |   |   |   |   |               |                                 |   |
| 595          | 417N3110-51   |                           | ..           |   |   |   |   |   |   |               | A, B, D,<br>F, H, J,<br>M, P, S | 1 |
| -600         | 417N3110-52   |                           | ..           |   |   |   |   |   |   |               | C, E, G,<br>K, L, N,<br>Q, R, T | 1 |
| 605          | 417N3170-11   |                           | ...          |   |   |   |   |   |   |               |                                 | 1 |
|              |               |                           |              |   |   |   |   |   |   |               |                                 |   |
| 610          | BACS12FA08K6  |                           | ...          |   |   |   |   |   |   |               |                                 | 2 |
|              |               |                           |              |   |   |   |   |   |   |               |                                 |   |
| 615          | 6100-9        |                           | ....         |   |   |   |   |   |   |               |                                 | 2 |
|              |               |                           |              |   |   |   |   |   |   |               |                                 |   |
| 620          | MS20253P2-165 |                           | ....         |   |   |   |   |   |   |               |                                 | 1 |
| 625          | 417N3173-1    |                           | ....         |   |   |   |   |   |   |               |                                 | 1 |
| 630          | 417N3171-2    |                           | ....         |   |   |   |   |   |   |               |                                 | 1 |
|              |               |                           |              |   |   |   |   |   |   |               |                                 |   |
| -630A        | 417N3171-3    |                           | ....         |   |   |   |   |   |   |               |                                 | 1 |
|              |               |                           |              |   |   |   |   |   |   |               |                                 |   |
| 635          | 417N3172-9    |                           | ....         |   |   |   |   |   |   |               |                                 | 1 |
|              |               |                           |              |   |   |   |   |   |   |               |                                 |   |
| -635A        | 417N3172-19   |                           | ....         |   |   |   |   |   |   |               |                                 | 1 |
|              |               |                           |              |   |   |   |   |   |   |               |                                 |   |
| 640          | 6035-2BR185   |                           | .....        |   |   |   |   |   |   |               |                                 | 2 |
|              |               |                           |              |   |   |   |   |   |   |               |                                 |   |
| 645          | 417N3172-11   |                           | .....        |   |   |   |   |   |   |               |                                 | 1 |
|              |               |                           |              |   |   |   |   |   |   |               |                                 |   |
| -645A        | 417N3172-21   |                           | .....        |   |   |   |   |   |   |               |                                 | 1 |
|              |               |                           |              |   |   |   |   |   |   |               |                                 |   |
| 650          | 417N3170-12   |                           | ...          |   |   |   |   |   |   |               |                                 | 1 |

-Item not Illustrated

# 25-23-36

ILLUSTRATED PARTS LIST

Page 1039

Jul 01/2007





## COMPONENT MAINTENANCE MANUAL

| FIG/<br>ITEM | PART NUMBER   | AIRLINE<br>PART<br>NUMBER | NOMENCLATURE  |   |   |   |   |   |   | USAGE<br>CODE | UNITS<br>PER<br>ASSY |
|--------------|---------------|---------------------------|---|---|---|---|---|---|---|---------------|----------------------|
|              |               |                           | 1   | 2 | 3 | 4 | 5 | 6 | 7 |               |                      |
| 1-           |               |                           | ATTACHING PARTS   |   |   |   |   |   |   |               |                      |
| 655          | BACS12FA08K6  |                           | . . . SCREW   |   |   |   |   |   |   |               | 2                    |
|              |               |                           | -----*-----   |   |   |   |   |   |   |               |                      |
| 660          | 6100-9        |                           | . . . . RETAINER<br>(V2X013)  |   |   |   |   |   |   |               | 2                    |
| 665          | MS20253P2-165 |                           | . . . . PIN-HINGE   |   |   |   |   |   |   |               | 1                    |
| 670          | 417N3173-1    |                           | . . . . SPRING  |   |   |   |   |   |   |               | 1                    |
| 675          | 417N3171-2    |                           | . . . . BOLT-CAM LATCH<br>(OPT ITEM 675A)   |   |   |   |   |   |   |               | 1                    |
| -675A        | 417N3171-3    |                           | . . . . BOLT-CAM LATCH<br>(OPT ITEM 675)  |   |   |   |   |   |   |               | 1                    |
| 680          | 417N3172-10   |                           | . . . . HOUSING ASSY-CAM LATCH<br>(OPT ITEM 680A)   |   |   |   |   |   |   |               | 1                    |
| -680A        | 417N3172-20   |                           | . . . . HOUSING ASSY-CAM LATCH<br>(OPT ITEM 680)  |   |   |   |   |   |   |               | 1                    |
| 685          | 6035-2BR185   |                           | . . . . . INSERT<br>(V01556)  |   |   |   |   |   |   |               | 2                    |
| 690          | 417N3172-12   |                           | . . . . . HOUSING<br>(USED ON ITEM 680)   |   |   |   |   |   |   |               | 1                    |
| -690A        | 417N3172-22   |                           | . . . . . HOUSING<br>(USED ON ITEM 680A)  |   |   |   |   |   |   |               | 1                    |
| 695          | BACS12FA08K7  |                           | . . . SCREW   |   |   |   |   |   |   |               | 4                    |
| 700          | AN960PD8L     |                           | . . . WASHER  |   |   |   |   |   |   |               | 4                    |
| 705          | H10-08BAC     |                           | . . . NUT<br>(V15653)<br>(SPEC BACN10JC08)<br>(OPT NS202101-82 (V80539))<br>(OPT RMLH9075-82W (V72962))<br>(OPT T6S832J (V71087))<br>(OPT VN303A82 (V92215))<br>(OPT 96-82 (V80539))<br>(OPT BRH10A08 (V52828)) |   |   |   |   |   |   |               | 4                    |
| 710          | 417N3102-1    |                           | . . . BRACKET-MTG   |   |   |   |   |   |   |               | 2                    |
| 715          | NAS557-12A    |                           | . . . GROMMET   |   |   |   |   |   |   |               | 2                    |
| 720          | BACB30MB3A    |                           | DELETED   |   |   |   |   |   |   |               |                      |
| 720A         | BACR15DR3     |                           | . . . RIVET<br>(SIZE DETERMINED ON INST)  |   |   |   |   |   |   |               | 2                    |

-Item not Illustrated

# 25-23-36

ILLUSTRATED PARTS LIST

Page 1040

Jul 01/2007



## COMPONENT MAINTENANCE MANUAL

| FIG/<br>ITEM | PART NUMBER  | AIRLINE<br>PART<br>NUMBER | NOMENCLATURE |   |   |   |   |   |   | USAGE<br>CODE                | UNITS<br>PER<br>ASSY |
|--------------|--------------|---------------------------|--------------|---|---|---|---|---|---|------------------------------|----------------------|
|              |              |                           | 1            | 2 | 3 | 4 | 5 | 6 | 7 |                              |                      |
| 1-           |              |                           |              |   |   |   |   |   |   |                              |                      |
| 725          | HL278-3      |                           |              |   |   |   |   |   |   |                              |                      |
| 730          | 417N3121-17  |                           |              |   |   |   |   |   |   | A, B, D,<br>F, H, J,<br>M, P | 1                    |
| -735         | 417N3121-94  |                           |              |   |   |   |   |   |   | C, E, G,<br>K, L, N,<br>Q, R | 1                    |
| 740          | CCR274SS3    |                           |              |   |   |   |   |   |   |                              | 4                    |
|              |              |                           |              |   |   |   |   |   |   |                              |                      |
| 745          | 417N3121-18  |                           |              |   |   |   |   |   |   |                              | 1                    |
| 755          | BACR15BB3D   |                           |              |   |   |   |   |   |   |                              |                      |
| 755A         | BACR15BB3AD  |                           |              |   |   |   |   |   |   |                              | 7                    |
|              |              |                           |              |   |   |   |   |   |   |                              |                      |
| 760          | 417N3122-1   |                           |              |   |   |   |   |   |   |                              | 1                    |
| 765          | 417N3121-121 |                           |              |   |   |   |   |   |   | A, B, D,<br>F, H, J,<br>M, P | 1                    |
| -770         | 417N3121-122 |                           |              |   |   |   |   |   |   | C, E, G,<br>K, L, N,<br>Q, R | 1                    |
| 775          | 417N3122-4   |                           |              |   |   |   |   |   |   |                              | 1                    |
| 780          | 417N3122-3   |                           |              |   |   |   |   |   |   |                              | 1                    |
| 785          | 417N3121-3   |                           |              |   |   |   |   |   |   | A, B, D,<br>F, H, J,<br>M, P | 1                    |
| -790         | 417N3121-4   |                           |              |   |   |   |   |   |   | C, E, G,<br>K, L, N,<br>Q, R | 1                    |
| 795          | 417N3121-117 |                           |              |   |   |   |   |   |   | A, B, D,<br>F, H, J,<br>M, P | 1                    |
| -800         | 417N3121-118 |                           |              |   |   |   |   |   |   | C, E, G,<br>K, L, N,<br>Q, R | 1                    |

-Item not Illustrated

**25-23-36**

ILLUSTRATED PARTS LIST

Page 1041

Jul 01/2007



## COMPONENT MAINTENANCE MANUAL

| FIG/<br>ITEM | PART NUMBER   | AIRLINE<br>PART<br>NUMBER | NOMENCLATURE |   |   |   |   |   |   | USAGE<br>CODE                   | UNITS<br>PER<br>ASSY |
|--------------|---------------|---------------------------|--------------|---|---|---|---|---|---|---------------------------------|----------------------|
|              |               |                           | 1            | 2 | 3 | 4 | 5 | 6 | 7 |                                 |                      |
| 1-           |               |                           |              |   |   |   |   |   |   |                                 |                      |
| 805          | 417N3111-3SP  |                           | .            | . |   |   |   |   |   | A, B, D,<br>F, H, J,<br>M, P, S | 1                    |
| -810         | 417N3111-4SP  |                           | .            | . |   |   |   |   |   | C, E, G,<br>K, L, N,<br>Q, R, T | 1                    |
| 815          | BAC27NPA0649  |                           | .            |   |   |   |   |   |   | A, B, D,<br>F, J, P             | 1                    |
| 815A         | BAC29PPS10438 |                           | .            |   |   |   |   |   |   | H                               | 1                    |
| 815B         | BAC29PPS1429  |                           | .            |   |   |   |   |   |   | M, S                            | 1                    |
| 820          | BAC27NPA0648  |                           | .            |   |   |   |   |   |   | C, E, G,<br>L, N, R             | 1                    |
| 820A         | BAC29PPS10437 |                           | .            |   |   |   |   |   |   | K                               | 1                    |
| 820B         | BAC29PPS1428  |                           | .            |   |   |   |   |   |   | Q, T                            | 1                    |
| 825          | BAC27NPA0610  |                           | .            |   |   |   |   |   |   | A, B, D,<br>F, H, J,<br>M, P, S | 1                    |
| 830          | BAC27NPA0609  |                           | .            |   |   |   |   |   |   | C, E, G,<br>K, L, N,<br>Q, R, T | 1                    |

-Item not Illustrated

# 25-23-36

ILLUSTRATED PARTS LIST

Page 1042

Jul 01/2007