



# **COMPONENT MAINTENANCE MANUAL WITH ILLUSTRATED PARTS LIST**

## **OUTBD OVERHEAD STOWAGE, 60-IN-STD BIN ASSEMBLY**

### **PART NUMBER**

**65C27005-10, -101, -106, -108, -112, -114, -116, -118,  
-12, -120, -123, -125, -14, -2, -3, -42, -43, -50, -52,  
-54, -58, -62, -64, -66, -68, -70, -72, -79, -80, -84,**

**BOEING PROPRIETARY, CONFIDENTIAL, AND/OR TRADE SECRET**

Copyright © 1995 The Boeing Company  
Unpublished Work - All Rights Reserved

Boeing claims copyright in each page of this document only to the extent that the page contains copyrightable subject matter. Boeing also claims copyright in this document as a compilation and/or collective work.

This document includes proprietary information owned by The Boeing Company and/or one or more third parties. Treatment of the document and the information it contains is governed by contract with Boeing. For more information, contact The Boeing Company, P.O. Box 3707, Seattle, Washington 98124.

Boeing, the Boeing signature, the Boeing symbol, 707, 717, 727, 737, 747, 757, 767, 777, 787, Dreamliner, BBJ, DC-8, DC-9, DC-10, KC-10, KDC-10, MD-10, MD-11, MD-80, MD-88, MD-90, P-8A, Poseidon and the Boeing livery are all trademarks owned by The Boeing Company; and no trademark license is granted in connection with this document unless provided in writing by Boeing.

PUBLISHED BY BOEING COMMERCIAL AIRPLANES GROUP, SEATTLE, WASHINGTON, USA  
A DIVISION OF THE BOEING COMPANY  
PAGE DATE: Jul 01/2009

**25-28-35**

Page 1  
Jul 01/2009



**COMPONENT MAINTENANCE MANUAL**

**PART NUMBER (Cont.)**

65C27005-86, -88,

65C34485-12, -14, -16, -18, -20, -22, -6, -8

**25-28-35**



## COMPONENT MAINTENANCE MANUAL

Revision No. 11  
Jul 01/2009

To: All holders of OUTBD OVERHEAD STOWAGE, 60-IN-STD BIN ASSEMBLY 25-28-35.

Attached is the current revision to this COMPONENT MAINTENANCE MANUAL

The COMPONENT MAINTENANCE MANUAL is furnished either as a printed manual, on microfilm, or digital products, or any combination of the three. This revision replaces all previous microfilm cartridges or digital products. All microfilm and digital products are reissued with all obsolete data deleted and all updated pages added.

For printed manuals, changes are indicated on the List of Effective Pages (LEP). The pages which are revised will be identified on the LEP by an R (Revised), A (Added), O (Overflow, i.e. changes to the document structure and/or page layout), or D (Deleted). Each page in the LEP is identified by Chapter-Section-Subject number, page number and page date.

Pages replaced or made obsolete by this revision should be removed and destroyed.

### ATTENTION

IF YOU RECEIVE PRINTED REVISIONS, PLEASE VERIFY THAT YOU HAVE RECEIVED AND FILED THE PREVIOUS REVISION. BOEING MUST BE NOTIFIED WITHIN 30 DAYS IF YOU HAVE NOT RECEIVED THE PREVIOUS REVISION. REQUESTS FOR REVISIONS OTHER THAN THE PREVIOUS REVISION WILL REQUIRE A COMPLETE MANUAL REPRINT SUBJECT TO REPRINT CHARGES SHOWN IN THE DATA AND SERVICES CATALOG.

**25-28-35**  
TRANSMITTAL LETTER  
Page 1  
Jul 01/2009



## COMPONENT MAINTENANCE MANUAL

Location of Change

Description of Change

NO HIGHLIGHTS

**25-28-35**

HIGHLIGHTS

Page 1

Jul 01/2009



## COMPONENT MAINTENANCE MANUAL

Subject/Page	Date	Subject/Page	Date	Subject/Page	Date
TITLE PAGE		25-28-35 CLEANING (cont)		25-28-35 SPECIAL TOOLS, FIXTURES, AND EQUIPMENT (cont)	
O 1	Jul 01/2009	402	BLANK	902	BLANK
O 2	Jul 01/2009	25-28-35 CHECK		25-28-35 ILLUSTRATED PARTS LIST	
25-28-35 TRANSMITTAL LETTER		501	Mar 01/2006	1001	Nov 01/2008
O 1	Jul 01/2009	502	BLANK	1002	Jul 01/2006
2	BLANK	25-28-35 REPAIR - GENERAL		1003	Nov 01/2006
25-28-35 HIGHLIGHTS		601	Mar 01/2006	1004	Jul 01/2006
O 1	Jul 01/2009	602	BLANK	1005	Jul 01/2006
2	BLANK	25-28-35 REPAIR 1-1		1006	Mar 01/2006
25-28-35 EFFECTIVE PAGES		601	Mar 01/2006	1007	Mar 01/2006
1 thru 2	Jul 01/2009	602	BLANK	1008	Mar 01/2006
25-28-35 CONTENTS		25-28-35 REPAIR 2-1		1009	Mar 01/2006
1	Nov 01/2007	601	Nov 01/2006	1010	Mar 01/2006
2	BLANK	602	BLANK	1011	Mar 01/2006
25-28-35 TR AND SB RECORD		25-28-35 REPAIR 3-1		1012	Mar 01/2006
1	Mar 01/2006	601	Nov 01/2006	1013	Mar 01/2006
2	BLANK	602	BLANK	1014	Mar 01/2006
25-28-35 REVISION RECORD		25-28-35 REPAIR 4-1		1015	Mar 01/2006
1	Mar 01/2006	601	Nov 01/2006	1016	Mar 01/2006
2	Mar 01/2006	602	BLANK	1017	Mar 01/2006
25-28-35 RECORD OF TEMPORARY REVISIONS		25-28-35 REPAIR 5-1		1018	Mar 01/2006
1	Mar 01/2006	601	Mar 01/2006	1019	Mar 01/2006
2	Mar 01/2006	602	BLANK	1020	Mar 01/2006
25-28-35 INTRODUCTION		25-28-35 REPAIR 6-1		1021	Mar 01/2006
1	Mar 01/2009	601	Mar 01/2006	1022	Mar 01/2006
2	BLANK	602	BLANK	1023	Mar 01/2006
25-28-35 DESCRIPTION AND OPERATION		25-28-35 REPAIR 7-1		1024	Mar 01/2006
1	Mar 01/2006	601	Mar 01/2006	1025	Mar 01/2006
2	BLANK	602	BLANK	1026	Mar 01/2006
25-28-35 TESTING AND FAULT ISOLATION		25-28-35 ASSEMBLY		1027	Mar 01/2006
101	Mar 01/2006	701	Mar 01/2006	1028	Mar 01/2006
102	BLANK	702	Mar 01/2006	1029	Mar 01/2006
25-28-35 DISASSEMBLY		703	Mar 01/2006	1030	Mar 01/2006
301	Mar 01/2006	704	Nov 01/2007	1031	Mar 01/2006
302	BLANK	25-28-35 FITS AND CLEARANCES		1032	Mar 01/2006
25-28-35 CLEANING		801	Nov 01/2007	1033	Mar 01/2006
401	Mar 01/2006	802	BLANK	1034	Mar 01/2006
		25-28-35 SPECIAL TOOLS, FIXTURES, AND EQUIPMENT		1035	Mar 01/2006
		901	Mar 01/2006	1036	Mar 01/2006

A = Added, R = Revised, D = Deleted, O = Overflow

# 25-28-35

EFFECTIVE PAGES

Page 1

Jul 01/2009



**COMPONENT MAINTENANCE MANUAL**

Subject/Page	Date	Subject/Page	Date	Subject/Page	Date
25-28-35 ILLUSTRATED PARTS LIST (cont)		25-28-35 ILLUSTRATED PARTS LIST (cont)			
1037	Mar 01/2006	1075	Mar 01/2006		
1038	Mar 01/2006	1076	Mar 01/2006		
1039	Mar 01/2006	1077	Mar 01/2006		
1040	Mar 01/2006	1078	Mar 01/2006		
1041	Mar 01/2006	1079	Mar 01/2006		
1042	Mar 01/2006	1080	Mar 01/2006		
1043	Mar 01/2006	1081	Mar 01/2006		
1044	Mar 01/2006	1082	Mar 01/2006		
1045	Mar 01/2006	1083	Mar 01/2006		
1046	Mar 01/2006	1084	Mar 01/2006		
1047	Mar 01/2006				
1048	Mar 01/2006				
1049	Mar 01/2006				
1050	Mar 01/2006				
1051	Mar 01/2006				
1052	Mar 01/2006				
1053	Mar 01/2006				
1054	Mar 01/2006				
1055	Mar 01/2006				
1056	Mar 01/2006				
1057	Mar 01/2006				
1058	Mar 01/2006				
1059	Mar 01/2006				
1060	Mar 01/2006				
1061	Mar 01/2006				
1062	Mar 01/2006				
1063	Mar 01/2006				
1064	Mar 01/2006				
1065	Mar 01/2006				
1066	Mar 01/2006				
1067	Mar 01/2006				
1068	Mar 01/2006				
1069	Mar 01/2006				
1070	Mar 01/2006				
1071	Mar 01/2006				
1072	Mar 01/2006				
1073	Mar 01/2006				
1074	Mar 01/2006				

A = Added, R = Revised, D = Deleted, O = Overflow

**25-28-35**

EFFECTIVE PAGES

Page 2

Jul 01/2009

**COMPONENT MAINTENANCE MANUAL****TABLE OF CONTENTS**

<b><u>Paragraph Title</u></b>		<b><u>Page</u></b>
OVERHEAD STOWAGE COMPARTMENT ASSEMBLY - DESCRIPTION AND OPERATION		1
TESTING AND FAULT ISOLATION	(Not Applicable)	
DISASSEMBLY		301
CLEANING		401
CHECK		501
REPAIR		601
ASSEMBLY		701
FITS AND CLEARANCES		801
SPECIAL TOOLS, FIXTURES, AND EQUIPMENT	(Not Applicable)	
ILLUSTRATED PARTS LIST		1001

**25-28-35**

CONTENTS

Page 1

Nov 01/2007



**COMPONENT MAINTENANCE MANUAL**

**TEMPORARY REVISION AND SERVICE BULLETIN RECORD**

<b>BOEING SERVICE BULLETIN</b>	<b>BOEING TEMPORARY REVISION</b>	<b>OTHER DIRECTIVE</b>	<b>DATE OF INCORPORATION INTO MANUAL</b>
		PRR 33180-48	MAR 05/85
25-1237			SEP 05/89
25A1283		PRR 35041-2R	SEP 05/92
25-1294		PRR 35041-2R	SEP 05/92

**25-28-35**

TR AND SB RECORD

Page 1

Mar 01/2006







### COMPONENT MAINTENANCE MANUAL

Revision		Filed		Revision		Filed	
Number	Date	Date	Initials	Number	Date	Date	Initials

**25-28-35**

REVISION RECORD

Page 2

Mar 01/2006







## COMPONENT MAINTENANCE MANUAL

### INTRODUCTION

#### 1. General

- A. The instructions in this manual supply the data necessary to do the maintenance functions together with the test, fault isolation, repair, and replacement of the defective parts.
- B. This manual is divided into different parts:
  - (1) Title Page
  - (2) Transmittal Letter
  - (3) Highlights
  - (4) List of Effective Pages
  - (5) Table of Contents
  - (6) Temporary Revision & Service Bulletin Record
  - (7) Record of Revisions
  - (8) Record of Temporary Revisions
  - (9) Introduction
  - (10) Procedures & IPL Sections
- C. Components that can be repaired have a different repair number for each specified repair. To find the repair number location of a component, look in the Repair-General procedure at the beginning of the REPAIR section. The Repair-General procedure also has an explanation of the True Position Dimension symbols used.
- D. All dimensions, measures, quantities and weights included are in English units. When metric equivalents are given they will be in the parentheses that follow the English units.
- E. The introduction to the Illustrated Parts List (IPL) shows how the IPL data is used.
- F. Design changes, optional parts, configuration differences and Service Bulletin modifications may cause different part numbers. These part numbers are identified in the IPL with an alphabetical letter which is added to the end of the basic item number. This new item number is referred to as an alpha-variant. Throughout the manual, IPL basic item number references also apply to alpha-variants unless shown differently.
- G. The tool reference numbers found in the individual procedures and in the Special Tools, Fixtures, and Equipment section are used to identify if a tool is a standard tool (STD-XXXX), a commercial tool (COM-XXXX), or a Special Tool (SPL-XXXX). This reference number is also used to distinguish between tools with similar names in the same procedure. These reference numbers are for use in the documentation only. They are not to be used for ordering tools.

# 25-28-35

INTRODUCTION

Page 1

Mar 01/2009



## COMPONENT MAINTENANCE MANUAL

### OVERHEAD STOWAGE COMPARTMENT ASSEMBLY - DESCRIPTION AND OPERATION

#### 1. Description

- A. The overhead stowage compartment is composed of a nomex honeycomb core body which supports a light assembly, bullnose and PSU supports, fittings and brackets, a latch which mounts on the bullnose extrusion of the body, and a door which is connected to the body by two hinges with mechanical actuators.

#### 2. Operation

- A. The door is restrained in the closed position by engagement of pawls on the latch with striker rollers on each end of the door. When force is applied to the latch handle, the pawls disengage from the striker rollers and actuator force opens and rotates the door upwards.

#### 3. Leading Particulars (approximate)

- A. Width – 28 inches
- B. Length – 60 inches
- C. Height – 14 inches
- D. Weight – 20-27 lbs

# 25-28-35

DESCRIPTION AND OPERATION

Page 1

Mar 01/2006



**COMPONENT MAINTENANCE MANUAL**

**TESTING AND FAULT ISOLATION**

**(NOT APPLICABLE)**

**25-28-35**

TESTING AND FAULT ISOLATION

Page 101

Mar 01/2006



## COMPONENT MAINTENANCE MANUAL

### DISASSEMBLY

#### 1. General

- A. This procedure has the data necessary to do a disassembly.
- B. Disassemble this component only as necessary to complete fault isolation, determine the serviceability of parts, perform required repairs, and return the unit to serviceable condition
- C. Refer to IPL Figure 1 and IPL Figure 2 for the item numbers.

#### 2. Disassembly

- A. Remove light (13, 16, 17) by removing screws (22) and washers (25).  
**NOTE:** Do not disassemble light (13, 16, 17) unless replacement of housing (55) or ballast (37) is required.
- B. 65C57005 compartment with ballast:
  - (1) Remove ballast (37) by removing screws (73), washers (64), spring (70), spacer (67), screws (28), washers (31) and nuts (34).
- C. 65C57005 compartment with night light bulb:
  - (1) Remove bulb (40).
- D. Remove bolts (76), washers (79) and slide brackets (86).
- E. Remove bolts (125), screws (128) and fittings (131).
- F. Remove screws (189), washers (195) and door assembly (183, 186).
- G. Remove striker plate (240) by removing screws (243) and washers (246).
- H. Separate actuator (330) from hinge (318, 321) and chassis (342) by removing cotter pin (282), washer (294), pin (285), bolt (324) and washer (327).
- I. Remove chassis (333, 336) by removing bolts (267, 273) and washers (276).
- J. Separate chassis (342, 345) from hinge (318, 321) by removing bolt (291), washer (309, 312).
- K. Remove latch (369) and covers (387, 390) by removing screws (372, 375, 381) and inserts (378, 384).
- L. Remove fittings (363, 366) by removing screws (348, 357) and nut (360).

# 25-28-35

DISASSEMBLY

Page 301

Mar 01/2006





## COMPONENT MAINTENANCE MANUAL

### CLEANING

#### 1. General

- A. This procedure has the data necessary to do cleaning.
- B. Refer to the Standard Overhaul Practices Manual (SOPM) for the SOPM subjects identified in this procedure.

#### 2. Cleaning

##### A. References

Reference	Title
SOPM 20-30-03	GENERAL CLEANING PROCEDURES

##### B. Procedure

- (1) Clean all plastic parts per Cleaning of Interior Painted and Plastic Parts in SOPM 20-30-03.
- (2) Use standard industry practices for cleaning aluminum parts of overhead compartment assembly.

# 25-28-35

CLEANING

Page 401

Mar 01/2006



## COMPONENT MAINTENANCE MANUAL

### CHECK

#### 1. General

- A. This procedure has the data necessary to do a check.
- B. Refer to the Standard Overhaul Practices Manual (SOPM) for the SOPM subjects identified in this procedure.
- C. Refer to IPL Figure 1 and IPL Figure 2 for the item numbers.

#### 2. Check

##### A. References

Reference	Title
SOPM 20-20-02	PENETRANT METHODS OF INSPECTION

##### B. Procedure

- (1) Check all parts for obvious defects in accordance with standard industry practices.
- (2) Penetrant examine fitting (10, 363, 366, IPL Figure 1, IPL Figure 2) per SOPM 20-20-02.

# 25-28-35

CHECK  
Page 501  
Mar 01/2006



## COMPONENT MAINTENANCE MANUAL

### REPAIR

#### 1. Contents

A. Repair, refinish, and replacement procedures are included in separate repair sections as follows:

**Table 601:**

<b>P/N</b>	<b>NAME</b>	<b>REPAIR</b>
412N1118	RETAINER, FILLER	1-1
412N1119-1	FITTING ASSY	2-1
412N1119-15, -16	FITTING ASSY	3-1
412N1147	SUPPORT	4-1
65C27005	COMPARTMENT ASSY	5-1
65C34485-6,-8,-12, -14,-16,-18,-20,-22	COMPARTMENT ASSEMBLY	5-1
65C27008	MODULE ASSY	6-1
65C34485-26,-32,-34 -36,-38	MODULE ASSY	6-1
- - -	MISC. PARTS	7-1

#### 2. Standard Practices

A. Refer to the following standard practices, as applicable, for details in individual repairs.

- SOPM 20-30-02 Stripping of Protective Finishes
- SOPM 20-41-01 Decoding Table for Boeing Finish Codes
- SOPM 20-41-02 Application of Chemical and Solvent Resistant Finishes
- SOPM 20-41-03 Application and Repair of Interior Decorative Finishes
- SOPM 20-43-01 Chromic Acid Anodizing
- SOPM 20-50-03 Bearing Installation and Retention
- SOPM 20-50-12 Application of Adhesives

#### 3. Materials

**NOTE:** Equivalent substitutes may be used.

A. Adhesive –

- (1) Type 70 - adhesive, A00028
- (2) Type 89 - urethane adhesive, A50055

B. Compound, Potting –

- (1) BMS 5-28, Type 18, Class 1 compound, A01021
- (2) BMS 5-28, Type 19 compound, A50042

C. Enamel – BMS 10-83, Type 2 coating, C00040

D. Lacquer – Interior Semi-Gloss, Color 701 black (F-14.904-701)

E. Primer – BMS 10-11, Type 1 primer, C00259

# 25-28-35

REPAIR - GENERAL

Page 601

Mar 01/2006



## COMPONENT MAINTENANCE MANUAL

### RETAINER, FILLER - REPAIR 1-1

412N1118-1, -2

#### **1. General**

- A. This procedure has the data necessary to do a repair of the filler retainer (249,252).
- B. Refer to the Standard Overhaul Practices Manual (SOPM) for the SOPM subjects identified in this procedure.
- C. Refer to REPAIR-GENERAL, Paragraph 2. for list of applicable standard practices.
- D. Refer to REPAIR-GENERAL, Paragraph 3. for the list of consumables materials.
- E. Refer to IPL Figure 1 and IPL Figure 2 for the item numbers.

#### **2. Retainer Replacement (249, 252, IPL Figure 1, IPL Figure 2)**

- A. Remove retainer from body assembly (432, IPL Figure 1, IPL Figure 2).
- B. Bond new retainer to body using adhesive, A00028 or urethane adhesive, A50055, per SOPM 20-50-12.

# 25-28-35

REPAIR 1-1

Page 601

Mar 01/2006



## COMPONENT MAINTENANCE MANUAL

### FITTING ASSY - REPAIR 2-1

412N1119-1

#### 1. General

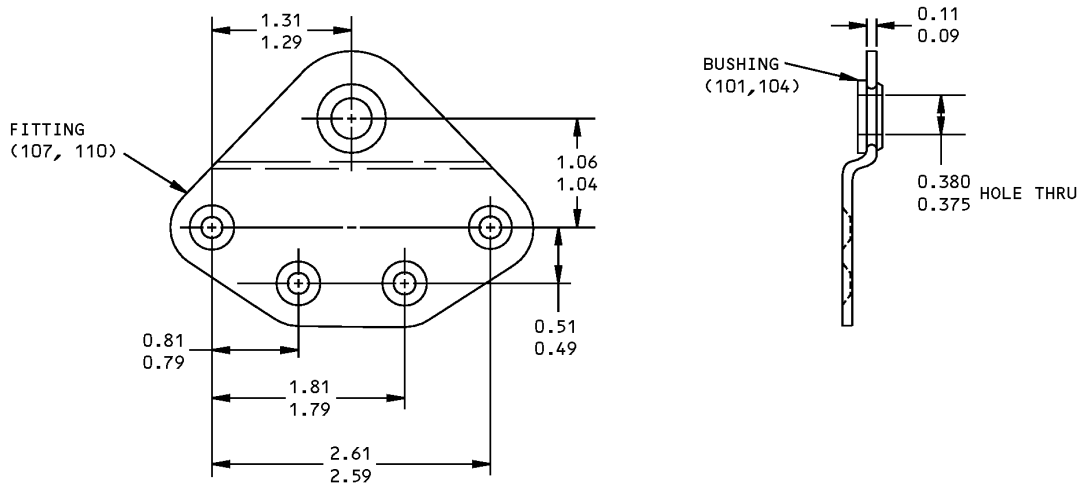
- A. This procedure has the data necessary to do a repair the fitting assembly (89,92).
- B. Refer to the Standard Overhaul Practices Manual (SOPM) for the SOPM subjects identified in this procedure.
- C. Refer to REPAIR-GENERAL, Paragraph 2. for list of applicable standard practices.
- D. Refer to REPAIR-GENERAL, Paragraph 3. for the list of consumables materials.
- E. Refer to IPL Figure 1 and IPL Figure 2 for the item numbers.

#### 2. Bushing Replacement

- A. Remove bushing (101, 104, IPL Figure 1, IPL Figure 2).
- B. Install new bushing per SOPM 20-50-03.
- C. Machine 0.375-0.380 inch hole through bushing per REPAIR 2-1, Figure 601.

#### 3. Refinish

- A. Fitting (107, 110, IPL Figure 1, IPL Figure 2) - Chromic acid anodize and apply primer, C00259 (F-18.13). Material: Al alloy.



ALL DIMENSIONS ARE IN INCHES

Bushing Replacement  
Figure 601

# 25-28-35

REPAIR 2-1

Page 601

Nov 01/2006



## COMPONENT MAINTENANCE MANUAL

### FITTING ASSY - REPAIR 3-1

412N1119-15, -16

#### 1. General

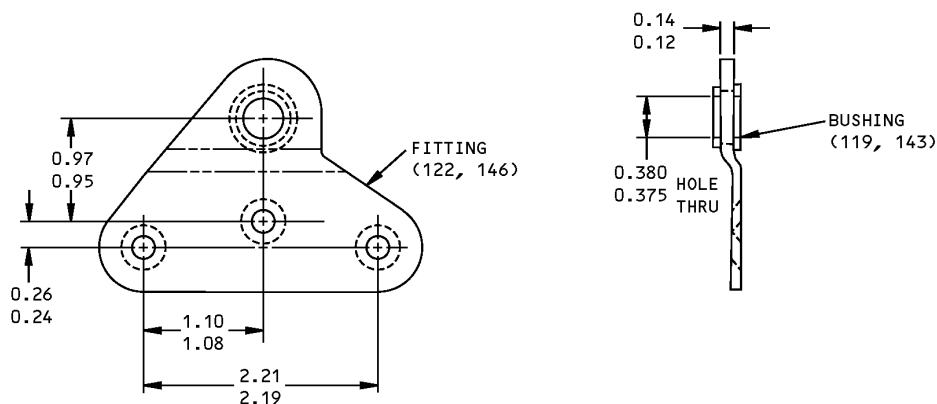
- A. This procedure has the data necessary to do a repair of fitting assembly (113,137, IPL Figure 1; 113, IPL Figure 2).
- B. Refer to the Standard Overhaul Practices Manual (SOPM) for the SOPM subjects identified in this procedure.
- C. Refer to REPAIR-GENERAL, Paragraph 2. for list of applicable standard practices.
- D. Refer to REPAIR-GENERAL, Paragraph 3. for the list of consumables materials.
- E. Refer to IPL Figure 1 and IPL Figure 2 for the item numbers.

#### 2. Bushing Replacement (REPAIR 3-1, Figure 601)

- A. Remove bushing (119, 143, IPL Figure 1; 119, IPL Figure 2).
- B. Install new bushing per SOPM 20-50-03.
- C. Machine 0.375-0.380 inch hole through bushing per REPAIR 3-1, Figure 601.

#### 3. Refinish

- A. Fittings (122, 146, IPL Figure 1, IPL Figure 2) – Chromic acid anodize and apply primer, C00259 (F-18.13). Material: Al alloy.



ALL DIMENSIONS ARE IN INCHES

Bushing Replacement  
Figure 601

# 25-28-35

REPAIR 3-1

Page 601

Nov 01/2006



## COMPONENT MAINTENANCE MANUAL

### SUPPORT - REPAIR 4-1

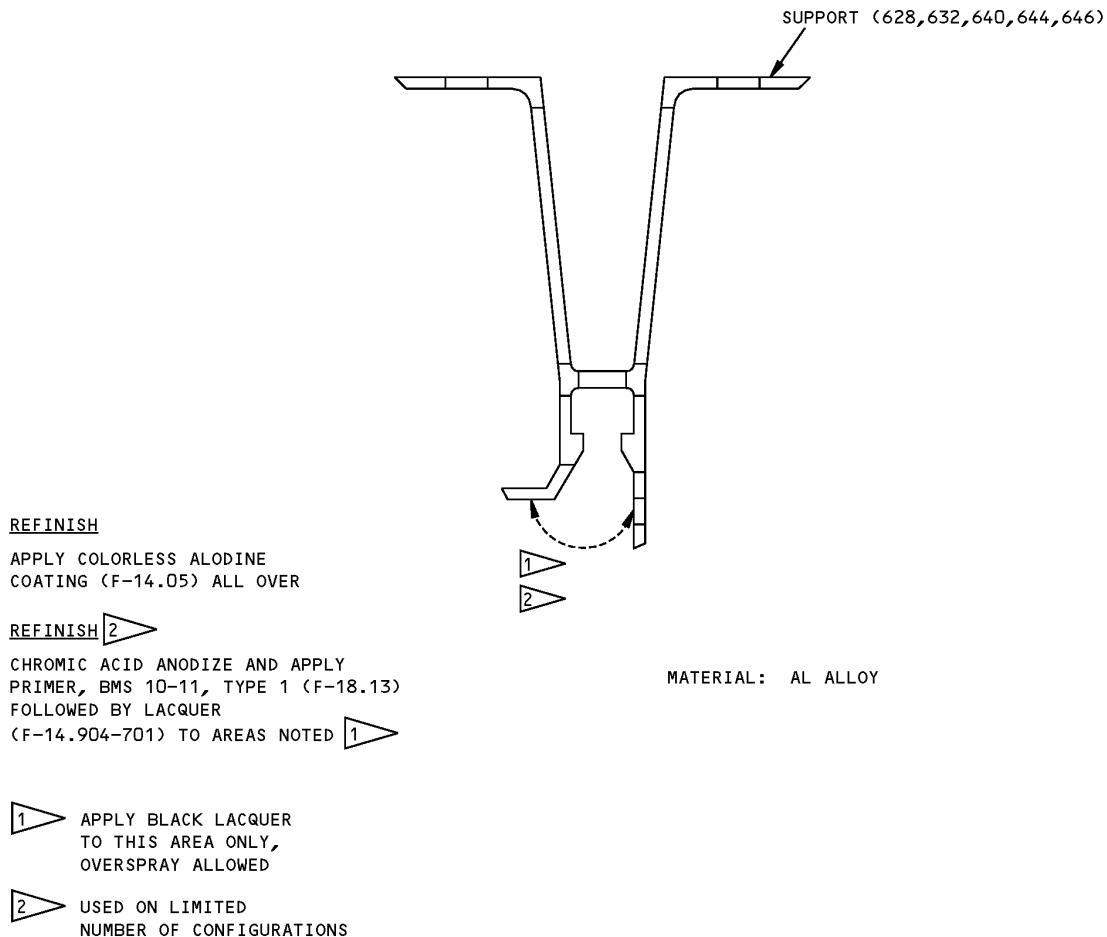
412N1147-1

#### 1. General

- A. This procedure has the data necessary to do a repair.
- B. Refer to REPAIR-GENERAL, Paragraph 2. for the Standard Overhaul Practices Manual (SOPM) subjects identified in this procedure.
- C. Refer to REPAIR-GENERAL, Paragraph 3. for the list of consumables materials.
- D. Refer to IPL Figure 1 and IPL Figure 2 for the item numbers.

#### 2. Plating Repair

- A. Repair consists of stripping and restoration of original finish. Refer to refinish instructions, REPAIR 4-1, Figure 601 .



Support Refinish  
Figure 601

# 25-28-35

REPAIR 4-1

Page 601

Nov 01/2006



## COMPONENT MAINTENANCE MANUAL

### COMPARTMENT ASSEMBLY - REPAIR 5-1

65C27005-2, -3, -10, -12, -14, -42, -43, -50, -52, -54, -58, -62, -64, -66, -68, -70, -72, -79, -80, -84, -86, -88, -101, -106, -108, -112, -114, -116, -118, -120, -123, -125, 65C34485-6, -8, -12, -14, -16, -18, -20, -22

#### **1. General**

- A. This procedure has the data necessary to do a repair.
- B. Refer to the Standard Overhaul Practices Manual (SOPM) for the SOPM subjects identified in this procedure.
- C. Refer to REPAIR-GENERAL, Paragraph 2. for list of applicable standard practices.
- D. Refer to IPL Figure 1 and IPL Figure 2 for the item numbers.

#### **2. Fitting Replacement**

- A. Remove (10, IPL Figure 1, IPL Figure 2) fitting from compartment.
- B. Bond fitting to compartment using adhesive, A00028 per SOPM 20-50-12.

#### **3. Fitting Assembly Replacement**

- A. Remove fitting assembly (89, 92, 113, 137, IPL Figure 1, IPL Figure 2) from compartment assembly.
- B. Bond fitting assembly to compartment using adhesive, A00028 per SOPM 20-50-12.

# 25-28-35

REPAIR 5-1

Page 601

Mar 01/2006





## COMPONENT MAINTENANCE MANUAL

### MODULE ASSEMBLY - REPAIR 6-1

65C27008-2, -10, -12, -42, -50, -52, -64, -66, -68, -70, -76, -77, -81, -83, -85, -94, -99, -104, -106, -108, -110, -115, 65C34485-26, -32, -34, -36, -38

#### **1. General**

- A. This procedure has the data necessary to do a repair.
- B. Refer to the Standard Overhaul Practices Manual (SOPM) for the SOPM subjects identified in this procedure.
- C. Refer to REPAIR-GENERAL for list of applicable standard practices.
- D. Refer to IPL Figure 1 and IPL Figure 2 for the item numbers.

#### **2. Bracket Replacement**

- A. Remove bracket (402, 405, IPL Figure 1, IPL Figure 2) from module assembly.
- B. Bond bracket to module using adhesive, A00028 per SOPM 20-50-12.

#### **3. Support Replacement**

- A. Remove support (408, IPL Figure 1, IPL Figure 2) from module assembly.
- B. Bond support to module using adhesive, A00028 per SOPM 20-50-12.

# 25-28-35

REPAIR 6-1

Page 601

Mar 01/2006



## COMPONENT MAINTENANCE MANUAL

### MISCELLANEOUS PARTS REFINISH - REPAIR 7-1

#### 1. General

- A. This procedure has the data necessary to do a repair.
- B. Refer to the Standard Overhaul Practices Manual (SOPM) for the SOPM subjects identified in this procedure.
- C. Refer to REPAIR-GENERAL, Paragraph 2. for list of applicable standard practices.
- D. Refer to REPAIR-GENERAL, Paragraph 3. for the list of consumables materials.
- E. Refer to IPL Figure 1 IPL Figure 2 for the item numbers.

#### 2. Refinish Details

- A. Repair of parts listed in REPAIR 7-1, Table 601 consists of restoration of original finish.

**Table 601:** Refinish Detail

IPL FIG. & ITEM	MATERIAL	FINISH
Fig. 1		
Fitting (10,107, 110,122,131,134, 146,363,366), Bracket (402,405)	Al alloy	Chromic acid anodize and apply primer, C00259 (F-18.13).
Fitting (363,366)	Al alloy	Chromic acid or sulfuric acid anodize (F-17.05).
Washer (64)	Al alloy	Chemical treat and apply primer, C00259 (F-18.06).
Support (429)	Al alloy	Sulfuric acid anodize (F-14.2992).
Fig. 2		
Fitting (10,107, 110,122,131,363, 366)	Al alloy	Chromic acid anodize and apply primer, C00259 (F-18.13).
Bracket (402,405)		
Fitting (363,366)	Al alloy	Chromic acid or sulfuric acid anodize (F-17.05).
Support (429)	Al alloy	Sulfuric acid anodize (F-14.2992).

# 25-28-35

REPAIR 7-1

Page 601

Mar 01/2006



## COMPONENT MAINTENANCE MANUAL

### ASSEMBLY

#### 1. General

- A. This procedure has the data necessary to do an assembly.
- B. Refer to IPL Figure 1 and IPL Figure 2 for the item numbers.

#### 2. Assembly

##### A. Procedure

- (1) Install fittings (363, 366) on bullnose support (420) using screws (348) washers (351) and nuts (354).
- (2) Install latch (369) on bullnose support (420) using screws (372).
- (3) Install latch cover (387, 390) using screws (375, 381), and inserts (378, 384).
- (4) Attach housing end of actuator (330) to chassis (333, 336) using bolts (293, 324) and washers (327, 303). Torque bolt (293) 5-6 pound-inches on hinge assemblies 412N1155-7, -8, -13, -14 and ensure that chassis are not crushed or deformed by the bolt.
- (5) Attach rod end of actuator (330) to hinge (318, 321) using pin (285), washer (294) and cotter pin (282).
- (6) Attach hinge (318, 321) to chassis (333, 336) using bolt (291), washer (303) and spacers (309, 312).
- (7) Install hinge (261, 264) on body (432) using bolts (267, 273), washers (276). Do not tighten bolts (267).
- (8) Locate and secure striker plate assemblies (240) on door (183) using screws (243) and washers (246) and obtain dimensions shown on ASSEMBLY, Figure 701. Do not tighten screws at this time.
- (9) Install door (183) using screws (189), and washers (195). Close door to ensure that strikers are aligned centrally in the latch covers (387, 390). Adjust door on hinge quadrants as necessary to align strikers.
- (10) Adjust door and latch as follows:
  - (a) With door closed and latched, pull down on center of door to seat strikers as far downward and inward as possible in the latch covers. While holding door in that position, tighten slotted shank bolts (267) which protrude from side panels of compartment.
  - (b) Tighten screws (243) to secure striker plates (240).
  - (c) Ensure proper adjustment of latch. Close door (183) and check the following:
    - 1) Door should close with minimal force.
    - 2) Latching pawls should engage with striker rollers on door.
    - 3) Latch actuating PUSH handle should protrude out from latch housing per ASSEMBLY, Figure 702. This condition will only exist when the latching pawls are fully engaged and door assembled fully closed. Any reading beyond the tolerance given in ASSEMBLY, Figure 702 indicates that door is not latched and steps A and B must be repeated.
  - (d) After adjustment of latch, open door and tighten slotted bolts (267) from inside of stowage compartment.
- (11) Perform latching and loading test as follows:

# 25-28-35

ASSEMBLY

Page 701

Mar 01/2006



## COMPONENT MAINTENANCE MANUAL

- (a) With door closed and latched, position bin at 60 degree (ASSEMBLY, Figure 703) using an appropriate fixture.
  - (b) Open door one inch and hold open using an appropriate spacer block.
  - (c) Apply seven (7) pound load at position one (1), and pull spacer out; the door should close and latch at both latch locations.
  - (d) Repeat test at position two (2) on door.
  - (e) If door does not properly close and latch, readjust door and latches per step 10.
- (12) Install bracket (86) using bolts (76) and washers (79).
- (13) 65C27005-3, -14, -32, -43, -54, -64, -72, -86 compartment
- (a) Install bulb (40).
- (14) Install lamp (43).
- (15) 65C27005-2, -10, -14, -42, -50, -54, -64, -68, -72, -79, -86, -101
- (a) Install screw (73), washer (64), spacer (67), and spring (70).
  - (b) Install ballast (37) on housing (55) using screws (28), washers (31), and nuts (34).
- (16) Install light (13, 16, 17) using screws (22) and washers (25).

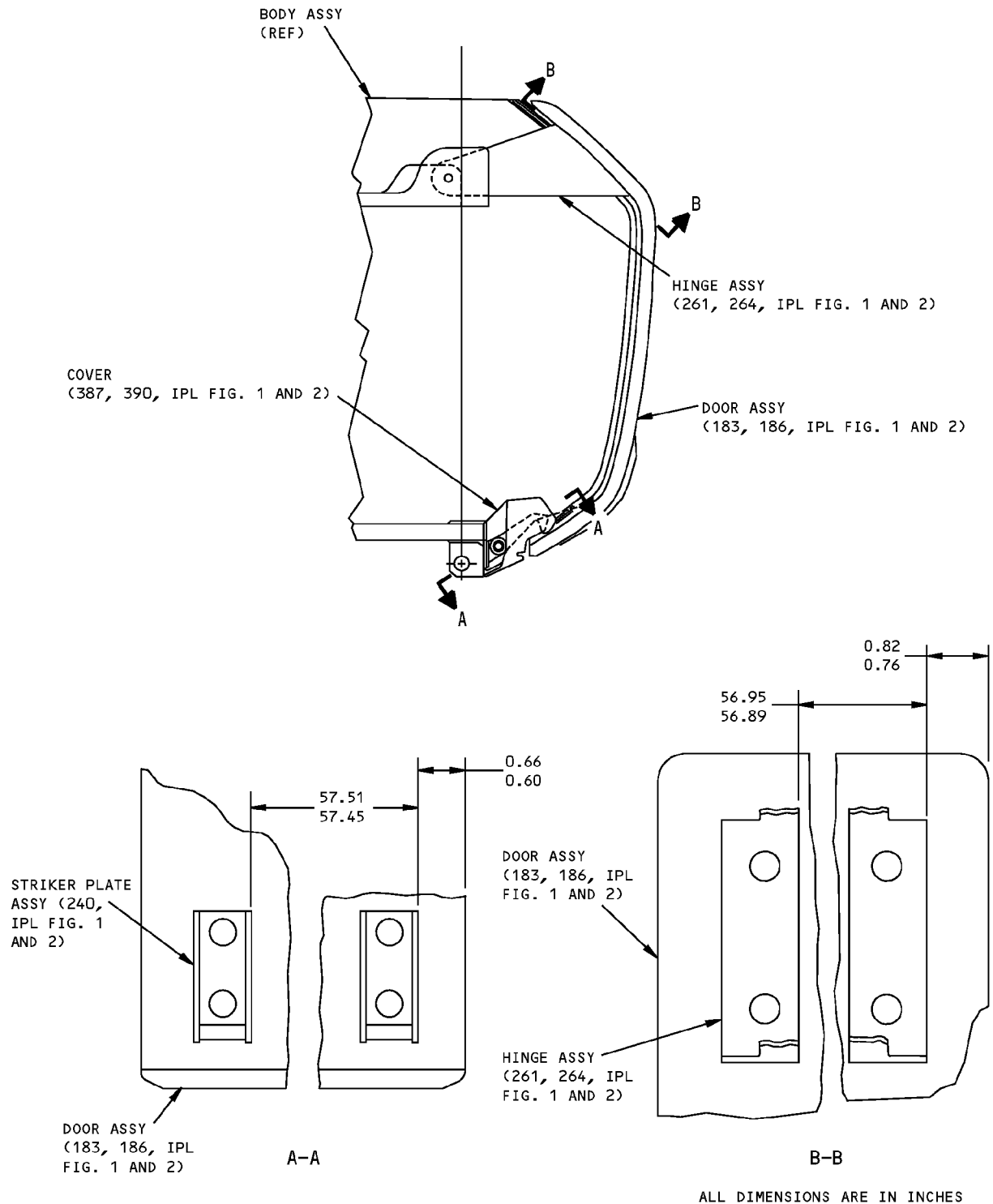
# 25-28-35

ASSEMBLY

Page 702

Mar 01/2006

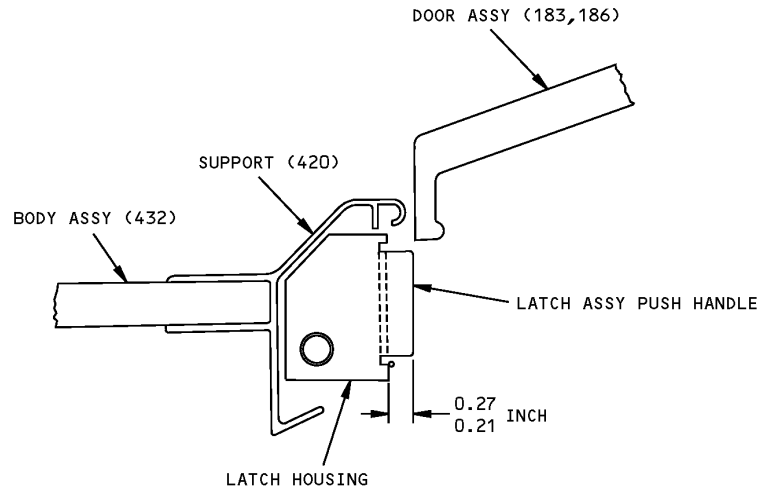
COMPONENT MAINTENANCE MANUAL



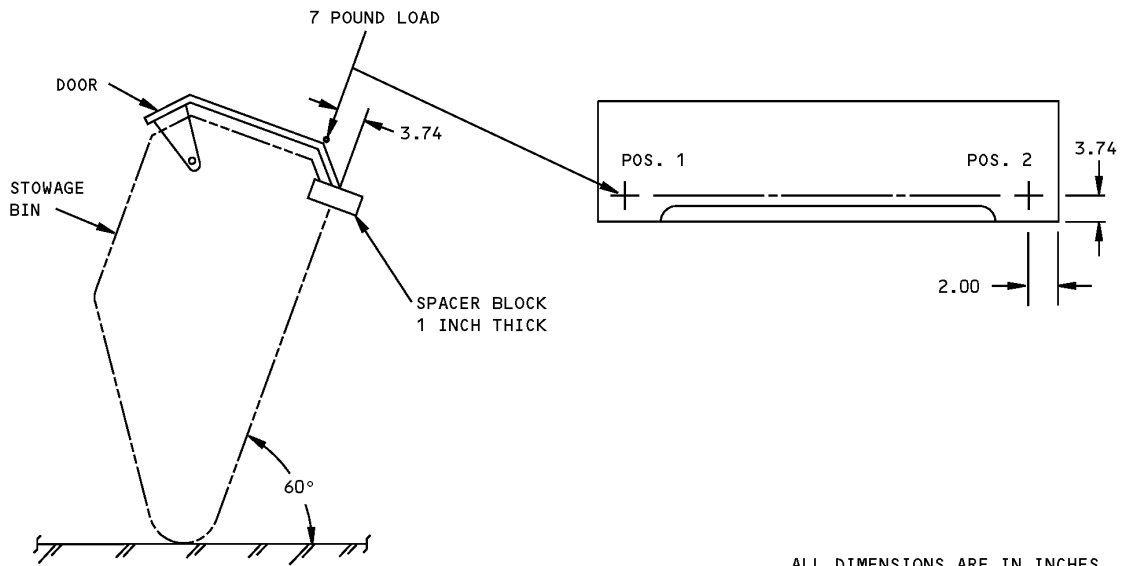
Module Assembly  
Figure 701

**25-28-35**

COMPONENT MAINTENANCE MANUAL



Door and Latch Assembly Adjustment  
Figure 702



ALL DIMENSIONS ARE IN INCHES

Door Latching and Loading Test  
Figure 703



COMPONENT MAINTENANCE MANUAL

FITS AND CLEARANCES

FOR TORQUE VALUES OF STANDARD FASTENERS, REFER TO 20-50-01			
ITEM NO.	NAME	TORQUE	
		POUND-INCHES	POUND-FEET
293,324, IPL FIG. 1,2	BOLT	5-6	

Torque Table  
Figure 801



**COMPONENT MAINTENANCE MANUAL**

**SPECIAL TOOLS, FIXTURES, AND EQUIPMENT**

**(NOT APPLICABLE)**

**25-28-35**

SPECIAL TOOLS, FIXTURES, AND EQUIPMENT

Page 901

Mar 01/2006





## COMPONENT MAINTENANCE MANUAL

### ILLUSTRATED PARTS LIST

#### 1. Introduction

- A. The Illustrated Parts List (IPL) contains an illustration and a list of component parts you can repair or replace. The Illustrated Parts Catalog (IPC) shows how to use the Boeing part number system.
- B. This shows how parts are related: The relation of each item to its next higher assembly (NHA) is shown in the NOMENCLATURE column. Use the indenture system that follows:

1	2	3	4	5	6	7
.	Assembly					
.	Attaching parts for assembly					
.	.	Detail parts for assembly				
.	.	Subassembly				
.	.	Attaching parts for subassembly				
.	.	.	Detail parts for subassembly			
.	.	.	Sub-subassembly			
.	.	.	Attaching parts for subassembly			
.	.	.	.	Details parts for sub-subassembly		
						Detail Installation Parts (Included only if installation parts may be sent to the shop as part of assembly)

- C. Each top assembly is given one use code letter (A, B, C, etc.) in the USAGE CODE column. All subsequent component parts in the list can have one or more of the use code letters to show effectivity to top assemblies. A component part without a use code applies to all top assemblies.
- D. An alphabetical letter is added after the item number for optional parts, parts changed by a Service Bulletin, configuration differences (except left-handed and right-handed parts), last engineering releases, and parts added between item numbers in a sequence. The alphabetical letter will not be shown on the illustration for equivalent parts of the same part number.
- E. Color-coded parts are identified with a single digit alpha following the dash number or with "SP" suffix. If the "SP" suffix is used, it represents consolidation of all color codes applicable for a given usage which are not separately listed. Orders for color-coded parts should include the registry number of the airplane for which the parts are ordered.
- F. If a part number is 15 characters long but will not fit in the part number column, the part number will be displayed with a "~" at the end of the line and will be continued on the next line. The "~" denotes that the part number continues on the next line.
- G. Parts changed by a Service Bulletin are shown by PRE SB XXXX and POST SB XXXX added to the NOMENCLATURE column.
- (1) When a new top assembly is added by a Service Bulletin, PRE SB XXXX and POST SB XXXX will be added at the top assembly level only. The configuration differences at the detail part level are shown by use code letters.
- (2) When the top assembly part number is not changed by the Service Bulletin, PRE SB XXXX and POST SB XXXX will be added at the detail level.
- H. Interchangeable Parts

# 25-28-35

ILLUSTRATED PARTS LIST

Page 1001

Nov 01/2008



## COMPONENT MAINTENANCE MANUAL

Optional (OPT)	The part is optional to and interchangeable with other parts that have the same item number.
Replaces, Replaced by and not interchangeable with (REPLACES, REPLACED BY AND NOT INTCHG/W)	The part replaces and is not interchangeable with the initial part.
Replaces, Replaced by (REPLACES, REPLACED BY)	The part replaces and is interchangeable with, or is an alternative to, the initial part.

### VENDOR CODES

<b>Code</b>	<b>Name</b>
01556	EMHART FASTENING SYSTEMS GROUP HELI-COIL DIV SHELTER ROCK LANE DANBURY, CONNECTICUT 06810 FORMERLY HELI-COIL DIV OF BLACK AND DECKER
04169	WESTERN SKY INDUSTRIES A DIVISION OF ATLAS CORPORATION 1280 SAN LUIS OBISPO STREET HAYWARD, CALIFORNIA 94544-7916 FORMERLY WESTERN SKY IND VB0008
05617	IDD AEROSPACE CORP 18225 NORTHEAST 76TH STREET PO BOX 97056 REDMOND, WASHINGTON 98073-9756 FORMERLY FARWEST ELEC INC;FORMERY IN BELLEVUE, WA; FORMERLY BELL IND FARWEST MFG DIV;FORMERLY BELL IND ILLUMINATED DISPLAYS DIV
06710	LAMSON AND SESSIONS CO THE VALLEY-TODECO 12975 BRADLEY AVENUE SYLMAR, CALIFORNIA 91342-3830 FORMERLY VALLEY BOLT CORP VB0097 IN NORTH HOLLYWOOD, CA
06725	AIR INDUSTRIES CORPORATION 12570 KNOTT STREET GARDEN GROVE, CALIFORNIA 92641-3932 FORMERLY AIR INDUSTRIES OF CALIF IN GARDENA, CALIF.

# 25-28-35

ILLUSTRATED PARTS LIST

Page 1002

Jul 01/2006



## COMPONENT MAINTENANCE MANUAL

Code	Name
06950	SCREWCORP VSI AEROSPACE PRODUCTS DIV FAIRCHILD IND DIV 13001 EAST TEMPLE AVENUE PO BOX 730 CITY OF INDUSTRY, CALIFORNIA 91746-1417 FORMERLY VB0096 AND VSI CORP SCREWCORP DIV FORMERLY IN CULVER CITY, CALIFORNIA SCREW CORP SEE V.S.I. CORP SCREWCORP DIVISION
08524	Replaced: [V08524] DEUTSCH FASTENER CORP SEE CODE V97928 Replaced: [V97928] SEE V17446 HUCK INTL by Code: Name and Address below 17446: HUCK INTL INC AEROSPACE FASTENER DIV 900 WATSON CENTER ROAD CARSON, CALIFORNIA 90745-4201 FORMERLY V32134 REXNORD INC; FORMERLY V97928 HUCK INTL Referenced in FORMERLY line below [17419] DEUTSCH COMPANY THE WELLS FARGO BANK BLDG 2444 WILSHIRE BLVD #600 SANTA MONICA, CALIFORNIA 90403 FORMERLY DEUTSCH FASTENER CORP V08524 FORMERLY IN LOS ANGELES
08805	GENERAL ELECTRIC 1975 NOBLE RD CLEVELAND, OHIO 44112-1719
10630	ANILLO INDUSTRIES, INCORPORATED 2090 NORTH GLASSELL ORANGE, CALIFORNIA 92667 FORMERLY WESTERN WASHER DIV OF SENG CO V87487
11815	CHERRY AEROSPACE FASTENERS DIV OF TEXTRON 1224 EAST WARNER AVENUE PO BOX 2157 SANTA ANA, CALIFORNIA 92707-0157 FORMERLY IN LOS ANGELES, CALIF , FORMERLY CHERRY FASTENERS TOWNSEND DIV OF TEXTRON INC V71087
15653	ALCOA GLOBAL FASTENERS INC DIV KAYNAR PRODUCTS 800 S STATE COLLEGE BLVD FULLERTON, CALIFORNIA 92831-3001 FORMERLY VK6405 MICRODOT AEROSP LTD; FORMERLY KAYNAR TECH FORMERLY FAIRCHILD FASTENERS KAYNAR DIV

# 25-28-35

ILLUSTRATED PARTS LIST

Page 1003

Nov 01/2006



## COMPONENT MAINTENANCE MANUAL

Code	Name
17023	BRUCE INDUSTRIES, INCORPORATED 101 EVANS AVENUE PO BOX 1700 DAYTON, NEVADA 89403 FORMERLY IN GARDENA, CALIFORNIA
24984	HYDRAFLOW 1881 W MALVERN FULLERTON, CALIFORNIA 92833-2403 FORMERLY IN CERRITOS, CA
27624	PB FASTENERS DIV OF BRILES PAUL R 1700 WEST 132ND STREET GARDENA, CALIFORNIA 90249 FORMERLY PAUL R BRILES INC P.B. FASTENER DIV
34252	GULF OIL CO USA DIV OF GULF OIL CORP PO BOX 1519 HOUSTON, TEXAS 77001
34941	HARPER ENGINEERING COMPANY 200 SOUTH TOBIN STREET RENTON, WASHINGTON 98055-1307
52828	REPUBLIC FASTENER MFG CORP 1300 RANCHO CONEJO BLVD NEWBURY PARK, CALIFORNIA 91320-1405 FORMERLY IN SYLMAR, CALIFORNIA
56878	SPS TECHNOLOGIES INC AEROSPACE AND INDUSTRIAL PRODUCTS DIV 301 HIGHLAND AVE JENKINTOWN, PENNSYLVANIA 19046 FORMERLY STANDARD PRESSED STEEL FORMERLY IN SALT LAKE, UTAH
60116	PSI WEST 255 SOUTH 7TH AVENUE CITY OF INDUSTRY, CALIFORNIA 91744-3079 FORMERLY V0812B

# 25-28-35

ILLUSTRATED PARTS LIST

Page 1004

Jul 01/2006



## COMPONENT MAINTENANCE MANUAL

Code	Name
72962	HARVARD INDUSTRIES INC 3 WERNER WAY SUITE 210 LEBANON, NEW JERSEY 08833 FORMERLY ESNA V7A079 FORMERLY ELASTIC STOP NUT IN UNION, NJ
73197	HI-SHEAR TECHNOLOGY CORP 2600 SKYPARK DRIVE TORRANCE, CALIFORNIA 90509
80539	SPS TECHNOLOGIES INC DIV AERPSOACE - SANTA ANA 2701 SOUTH HARBOR BOULEVARD SANTA ANA, CALIFORNIA 92704-5803 FORMERLY NUTT-SHEL DIV OF SPC WESTERN CO V80539 AND STANDARD PRESSED STEEL WESTERN DIV V17279
83014	HARTWELL CORPORATION 900 SOUTH RICHFIELD ROAD PLACENTIA, CALIFORNIA 92670-6732 FORMERLY V0532B IN LOS ANGELES, CALIFORNIA
92215	FAIRCHILD IND INC FAIRCHILD AEROSPACE FASTENER DIV 3010 W LOMITA BLVD TORRANCE, CALIFORNIA 90505-5102 FORMERLY VOI-SHAN IN CULVER CITY, CALIF
93907	TEXTRON INC CAMCAR DIV 600 18TH AVENUE ROCKFORD, ILLINOIS 61101
97393	SHUR-LOK CORPORATION 2541 WHITE ROAD PO BOX 19584 IRVINE, CALIFORNIA 92623-9584 FORMERLY SHUR LOK CORP VB0060 FORMERLY IN SANTA ANA, CALIFORNIA 92714
97928	Replaced: [V97928] SEE V17446 HUCK INTL by Code: Name and Address below 17446: HUCK INTL INC AEROSPACE FASTENER DIV 900 WATSON CENTER ROAD CARSON, CALIFORNIA 90745-4201 FORMERLY V32134 REXNORD INC; FORMERLY V97928 HUCK INTL

# 25-28-35

ILLUSTRATED PARTS LIST

Page 1005

Jul 01/2006



## COMPONENT MAINTENANCE MANUAL

### NUMERICAL INDEX

PART NUMBER	AIRLINE PART NUMBER	FIGURE	ITEM	UNITS PER ASSEMBLY
05939-3		1	37	1
		2	37	1
1864		1	40	1
		2	40	1
2055150		1	46	2
		2	46	2
22K1-02		1	34	3
		2	34	3
26CL-02		1	34	3
		2	34	3
411N3134-1		1	86	2
		2	86	2
411N3142-28		1	64	1
		2	64	1
412N1112-34		1	645	1
		2	645	1
412N1112-45		1	645A	1
412N1113-11		1	387A	1
412N1113-12		1	390A	1
412N1113-7		1	387	1
		2	387	1
412N1113-8		1	390	1
		2	390	1
412N1117-1		1	363	1
		2	363	1
412N1117-2		1	366	1
		2	366	1
412N1118-1SP		1	249	1
		2	249	1
412N1118-2SP		1	252	1
		2	252	1
412N1119-1		1	89	1
		1	92	1
		2	89	1

# 25-28-35

ILLUSTRATED PARTS LIST

Page 1006

Mar 01/2006



## COMPONENT MAINTENANCE MANUAL

PART NUMBER	AIRLINE PART NUMBER	FIGURE	ITEM	UNITS PER ASSEMBLY
		2	92	1
412N1119-12		1	131	2
		1	134	1
		2	131	1
412N1119-13		1	10	1
412N1119-14		2	10	1
412N1119-15		1	113	1
		2	113	1
412N1119-16		1	137	1
412N1119-17		1	122	1
		2	122	1
412N1119-18		1	146	1
412N1119-2		1	107	1
		1	110	1
		2	107	1
		2	110	1
412N1119-24		1	137A	1
412N1140-13		1	207	1
		2	207	1
412N1140-18SP		1	198	1
		2	198	1
412N1140-1SP		1	183	1
		2	183	1
412N1140-41SP		1	186	1
		2	186	1
412N1140-58SP		1	201	1
		2	201	1
412N1140-88SP		1	186A	1
412N1141-1SP		1	204	1
		2	204	1
412N1141-7SP		1	210	1
		2	210	1
412N1142-11		1	214	1
		2	214	1
412N1142-12		1	215	1

# 25-28-35

ILLUSTRATED PARTS LIST

Page 1007

Mar 01/2006



## COMPONENT MAINTENANCE MANUAL

PART NUMBER	AIRLINE PART NUMBER	FIGURE	ITEM	UNITS PER ASSEMBLY
		2	215	1
412N1142-13SP		2	234	1
412N1142-15		1	213	1
		2	213	1
412N1143-13SP		1	234	1
412N1143-14SP		1	237	1
		2	237	1
412N1145-27		1	402	1
		2	402	1
412N1145-28		1	405	1
		2	405	1
412N1146-1		1	420	1
		2	420	1
412N1146-41		1	429	1
		2	429	1
412N1147-1		1	408	1
		2	408	1
412N1153-101		1	369	1
		2	369	2
412N1153-157		1	369A	1
412N1154-1		1	258	1
		2	258	1
412N1154-2		1	255	1
		2	255	1
412N1154-5		1	258A	1
412N1154-6		1	255A	1
412N1155-1		1	261	1
		1	261B	1
		2	261	1
		2	261B	1
412N1155-13		1	261C	1
412N1155-14		1	264C	1
412N1155-2		1	264	1
		1	264B	1
		2	264	1

# 25-28-35

ILLUSTRATED PARTS LIST

Page 1008

Mar 01/2006





## COMPONENT MAINTENANCE MANUAL

PART NUMBER	AIRLINE PART NUMBER	FIGURE	ITEM	UNITS PER ASSEMBLY
		2	264B	1
412N1155-25		1	261D	1
412N1155-26		1	264G	1
412N1155-7		1	261A	1
		1	264E	1
		2	261A	1
412N1155-8		1	264A	1
		1	264F	1
		2	264A	1
412N1156-1		1	333	1
		2	333	1
412N1156-13		1	333A	1
		2	333A	1
412N1156-14		1	336A	1
		2	336A	1
412N1156-15		1	343	1
		2	343	1
412N1156-16		1	346	1
		2	346	1
412N1156-2		1	336	1
		2	336	1
412N1156-21		1	336B	1
412N1156-22		1	336C	1
412N1156-23		1	346A	1
412N1156-24		1	346B	1
412N1156-3		1	342	1
		2	342	1
412N1156-4		1	345	1
		2	345	1
412N1161-1		1	10A	1
412N1227-1		1	267	4
		2	267	4
412N1245-1		1	231	2
		2	231	2
417N5120-1		1	13A	1

# 25-28-35

ILLUSTRATED PARTS LIST

Page 1009

Mar 01/2006



## COMPONENT MAINTENANCE MANUAL

PART NUMBER	AIRLINE PART NUMBER	FIGURE	ITEM	UNITS PER ASSEMBLY
		2	13A	1
417N5120-10		1	43	1
		2	43	1
417N5120-14		1	13	1
		1	13B	1
		2	13	1
417N5120-15		1	16	1
		1	16B	1
417N5120-17		1	17	1
		1	17B	1
417N5120-2		1	16A	1
417N5120-4		1	17A	1
6041-3BR225		1	339	2
6041-3BRX225		2	339	2
65C27005-101SP		1	1X	RF
65C27005-106SP		1	2A	RF
65C27005-108SP		1	2B	RF
65C27005-10SP		1	1B	RF
65C27005-112SP		1	2C	RF
65C27005-114SP		1	2D	RF
65C27005-116SP		1	2E	RF
65C27005-118SP		1	2F	RF
65C27005-120SP		1	2G	RF
65C27005-123SP		1	2H	RF
65C27005-125SP		1	2J	RF
65C27005-12SP		1	1C	RF
65C27005-14SP		1	1D	RF
65C27005-2SP		1	1	RF
65C27005-3SP		1	1A	RF
		2	1	RF
65C27005-42SP		1	1E	RF
65C27005-43SP		1	1F	RF
		2	1A	RF
65C27005-50SP		1	1G	RF
65C27005-52SP		1	1H	RF

# 25-28-35

ILLUSTRATED PARTS LIST

Page 1010

Mar 01/2006



## COMPONENT MAINTENANCE MANUAL

PART NUMBER	AIRLINE PART NUMBER	FIGURE	ITEM	UNITS PER ASSEMBLY
65C27005-54SP		1	1J	RF
65C27005-58SP		1	1K	RF
65C27005-62SP		1	1L	RF
65C27005-64SP		1	1M	RF
65C27005-66SP		1	1N	RF
65C27005-68SP		1	1P	RF
65C27005-70SP		1	1Q	RF
65C27005-72SP		1	1R	RF
65C27005-79SP		1	1S	RF
65C27005-80SP		1	1T	RF
65C27005-84SP		1	1U	RF
65C27005-86SP		1	1V	RF
65C27005-88SP		1	1W	RF
65C27008-104SP		1	182E	1
65C27008-106SP		1	182F	1
65C27008-108SP		1	182G	1
65C27008-10SP		1	152	1
65C27008-110SP		1	182H	1
65C27008-115SP		1	182J	1
65C27008-12SP		1	155	1
65C27008-2SP		1	149	1
65C27008-3SP		2	149	1
65C27008-42SP		1	164	1
65C27008-43SP		2	152	1
65C27008-50SP		1	167	1
65C27008-52SP		1	170	1
65C27008-64SP		1	171	1
65C27008-66SP		1	172	1
65C27008-68SP		1	173	1
65C27008-70SP		1	174	1
65C27008-76SP		1	174A	1
65C27008-77SP		1	176	1
65C27008-81SP		1	180	1
65C27008-83SP		1	181	1
65C27008-85SP		1	182	1

# 25-28-35

ILLUSTRATED PARTS LIST

Page 1011

Mar 01/2006



## COMPONENT MAINTENANCE MANUAL

PART NUMBER	AIRLINE PART NUMBER	FIGURE	ITEM	UNITS PER ASSEMBLY
65C27008-94SP		1	182A	1
65C27008-99SP		1	182C	1
65C27011-10		1	434	1
65C27011-1004		1	450	1
65C27011-1005		2	450	1
65C27011-12		1	435	1
65C27011-1201		1	458	1
65C27011-1202		1	470	1
		2	470	1
65C27011-1203		1	479	1
		2	479	1
65C27011-1204		1	488	1
65C27011-1251		2	506	1
65C27011-1258		1	497	1
65C27011-1260		1	506	1
65C27011-1264		1	515	1
65C27011-1266		1	521	1
65C27011-1268		1	524	1
65C27011-1270		1	533	1
65C27011-1301		2	548	1
65C27011-1302		1	542	1
65C27011-1310		1	548	1
65C27011-1312		1	554	1
65C27011-1318		1	560	1
65C27011-1320		1	566	1
65C27011-2		1	432	1
65C27011-20		1	436	1
65C27011-2001		1	578	1
		2	578	1
65C27011-2101		1	584	1
		2	584	1
65C27011-22		1	437	1
65C27011-2201		1	590	1
		2	590	1
65C27011-24		1	438	1

# 25-28-35

ILLUSTRATED PARTS LIST

Page 1012

Mar 01/2006



## COMPONENT MAINTENANCE MANUAL

PART NUMBER	AIRLINE PART NUMBER	FIGURE	ITEM	UNITS PER ASSEMBLY
65C27011-26		1	440	1
65C27011-3		2	432	1
65C27011-32		1	442	1
65C27011-33		1	444	1
65C27011-37		1	446	1
65C27011-39		1	448	1
65C27011-4001		1	596	1
65C27011-4008		1	600	1
65C27011-4101		1	602	1
65C27011-49		1	448A	1
65C27011-5001		1	610	1
65C27011-54		1	448B	1
65C27011-59		1	448C	1
65C27011-61		1	448D	1
65C27011-63		1	448E	1
65C27011-65		1	448F	1
65C27011-69		1	448G	1
65C28117-3		1	44	1
		2	44	1
65C34485-12SP		1	3B	RF
65C34485-14SP		1	3C	RF
65C34485-16SP		1	3D	RF
65C34485-18SP		1	3E	RF
65C34485-20SP		1	3F	RF
65C34485-22SP		1	3G	RF
65C34485-26		1	164A	1
65C34485-32		1	171A	1
65C34485-34		1	181A	1
65C34485-36		1	173A	1
65C34485-38		1	174B	1
65C34485-6SP		1	3	RF
65C34485-8SP		1	3A	RF
800000255-1		1	56A	1
800000255-11		1	55	1
		2	55	1

# 25-28-35

ILLUSTRATED PARTS LIST

Page 1013

Mar 01/2006



## COMPONENT MAINTENANCE MANUAL

PART NUMBER	AIRLINE PART NUMBER	FIGURE	ITEM	UNITS PER ASSEMBLY
800000255-12		1	58	1
800000255-14		1	60	1
A1C1321-3-8		1	270	4
		2	270	4
AN960JD10		1	7A	8
		1	79A	4
		1	128A	4
		2	7A	8
		2	79A	4
		2	128A	4
AN960JD10L		1	303A	2
		1	327	1
		2	303A	1
AN960JD10LL		1	25A	3
		2	25A	3
AN960JD8		1	351A	4
		1	414A	11
		2	351A	4
		2	414A	11
AN960PD10L		1	294	1
		2	294	1
		2	327	1
B30MY6K2		1	357	4
		2	357	4
BACB28B6-220P		1	101	1
		2	101	1
		2	104	1
BACB28B6-250P		1	119	1
		2	119	1
BACB30LK3-18		1	273	1
		2	273	6
BACB30MY6K2		1	357	4
		2	357	4
BACB30NM3K1		1	4	8
		1	4	8

# 25-28-35

ILLUSTRATED PARTS LIST

Page 1014

Mar 01/2006



COMPONENT MAINTENANCE MANUAL

PART NUMBER	AIRLINE PART NUMBER	FIGURE	ITEM	UNITS PER ASSEMBLY
		1	4	8
		1	4	8
		1	4	8
		1	4	8
		1	4	8
		1	4	8
		1	4	8
		1	4	8
		1	4	8
		1	4	8
		1	76	4
		1	76	4
		1	76	4
		1	76	4
		1	76	4
		1	76	4
		1	76	4
		1	76	4
		1	76	4
		1	76	4
		1	76	4
		1	76	4
		1	76	4
		1	76	4
		1	76	4
		1	76	4
		1	76	4
		1	125	4
		1	125	4
		1	125	4
		1	125	4
		1	125	4
		1	125	4
		1	125	4
		1	125	4
		1	125	4
		1	125	4
		1	125	4
		1	125	4
		1	125	4
		1	125	4
		2	4	8

**25-28-35**

ILLUSTRATED PARTS LIST

Page 1015

Mar 01/2006



### COMPONENT MAINTENANCE MANUAL

PART NUMBER	AIRLINE PART NUMBER	FIGURE	ITEM	UNITS PER ASSEMBLY
		2	4	8
		2	4	8
		2	4	8
		2	4	8
		2	4	8
		2	4	8
		2	4	8
		2	4	8
		2	4	8
		2	4	8
		2	4	8
		2	4	8
		2	76	4
		2	76	4
		2	76	4
		2	76	4
		2	76	4
		2	76	4
		2	76	4
		2	76	4
		2	76	4
		2	76	4
		2	76	4
		2	76	4
		2	76	4
		2	76	4
		2	125	4
		2	125	4
		2	125	4
		2	125	4
		2	125	4
		2	125	4
		2	125	4
		2	125	4
		2	125	4
		2	125	4
		2	125	4
		2	125	4
		2	125	4
		2	125	4
		2	125	4
		2	125	4

# 25-28-35

ILLUSTRATED PARTS LIST

Page 1016

Mar 01/2006





## COMPONENT MAINTENANCE MANUAL

PART NUMBER	AIRLINE PART NUMBER	FIGURE	ITEM	UNITS PER ASSEMBLY
BACB30NM3K12		1	293	1
		2	326	1
BACB30NM3K8		1	292	1
		2	325	1
BACB38B6-250P		1	143	1
BACN10KB08		1	426	2
		2	426	2
BACN10R10L		1	34	3
		2	34	3
BACR15DR3		1	423	4
		2	423	4
BACS12ER06K8		1	375	4
		1	375	4
		1	375	4
		1	375	4
		1	375	4
		1	375	4
		1	375	4
		1	375	4
		1	375	4
		1	375	4
		1	375	4
		1	375	4
		1	375	4
		1	375	4
		1	375	4
		1	375	4
		1	375	4
		2	375	4
		2	375	4
		2	375	4
2	375	4		
2	375	4		
2	375	4		
2	375	4		
2	375	4		
2	375	4		
2	375	4		
2	375	4		

# 25-28-35

ILLUSTRATED PARTS LIST

Page 1017

Mar 01/2006



## COMPONENT MAINTENANCE MANUAL

PART NUMBER	AIRLINE PART NUMBER	FIGURE	ITEM	UNITS PER ASSEMBLY
BACS12ER08K12		1	411	11
		1	411	11
		1	411	11
		1	411	11
		1	411	11
		1	411	11
		1	411	11
		1	411	11
		1	411	11
		1	411	11
		1	411	11
		1	411	11
		1	411	11
		1	411	11
		2	411	11
		2	411	11
		2	411	11
		2	411	11
		2	411	11
		BACS12ER08K14		1
2	348			4
BACS12ER08K6		1	372	2
		1	372	2
		2	372	2
		2	372	2
		2	372	2
		2	372	2
		2	372	2
		2	372	2

# 25-28-35

ILLUSTRATED PARTS LIST

Page 1018

Mar 01/2006



COMPONENT MAINTENANCE MANUAL

PART NUMBER	AIRLINE PART NUMBER	FIGURE	ITEM	UNITS PER ASSEMBLY
BACS12ER3K6		2	372	2
		2	372	2
		2	372	2
		2	372	2
		2	372	2
		1	28	3
		1	28	3
		1	28	3
		1	28	3
		1	28	3
		1	28	3
		1	28	3
		1	28	3
		1	28	3
		1	28	3
		1	28	3
		1	28	3
		1	28	3
		1	95	4
		1	95	4
		1	95	4
		1	95	4
		1	95	4
		1	95	4
		1	95	4
		1	95	4
	1	95	4	
	1	98	4	
	1	98	4	
	1	98	4	
	1	98	4	
	1	98	4	
	1	98	4	

**25-28-35**

ILLUSTRATED PARTS LIST

Page 1019

Mar 01/2006



COMPONENT MAINTENANCE MANUAL

PART NUMBER	AIRLINE PART NUMBER	FIGURE	ITEM	UNITS PER ASSEMBLY
		1	98	4
		1	98	4
		1	98	4
		1	98	4
		1	98	4
		1	98	4
		1	116	1
		1	116	1
		1	116	1
		1	116	1
		1	116	1
		1	116	1
		1	116	1
		1	116	1
		1	116	1
		1	116	1
		1	116	1
		1	116	1
		1	140	3
		1	140	3
		1	140	3
		1	140	3
		1	140	3
		1	140	3
		1	140	3
		1	140	3
		1	140	3
		1	140	3
		1	140	3
		1	140	3
		1	140	3
		1	140	3
		1	140	3
		1	372	2
		1	372	2
		1	372	2
		1	372	2
		1	372	2

**25-28-35**

ILLUSTRATED PARTS LIST

Page 1020

Mar 01/2006



## COMPONENT MAINTENANCE MANUAL

PART NUMBER	AIRLINE PART NUMBER	FIGURE	ITEM	UNITS PER ASSEMBLY
		1	372	2
		1	372	2
		1	372	2
		1	372	2
		1	372	2
		2	28	3
		2	28	3
		2	28	3
		2	28	3
		2	28	3
		2	28	3
		2	28	3
		2	28	3
		2	28	3
		2	28	3
		2	28	3
		2	28	3
		2	28	3
		2	95	4
		2	95	4
		2	95	4
		2	95	4
		2	95	4
		2	95	4
		2	95	4
		2	95	4
		2	95	4
		2	95	4
		2	95	4
		2	95	4
		2	95	4
		2	95	4
		2	95	4
		2	95	4
		2	95	4
		2	95	4
		2	95	4
		2	98	4
		2	98	4
		2	98	4
		2	98	4
		2	98	4
		2	98	4
		2	98	4

**25-28-35**

ILLUSTRATED PARTS LIST

Page 1021

Mar 01/2006



## COMPONENT MAINTENANCE MANUAL

PART NUMBER	AIRLINE PART NUMBER	FIGURE	ITEM	UNITS PER ASSEMBLY
		2	98	4
		2	98	4
		2	98	4
		2	98	4
		2	98	4
		2	98	4
		2	116	1
		2	116	1
		2	116	1
		2	116	1
		2	116	1
		2	116	1
		2	116	1
		2	116	1
		2	116	1
		2	116	1
		2	116	1
		2	116	1
		2	116	1
		2	116	1
		2	116	1
BACS12FA3K4		1	243	4
		2	243	4
BACS12FA3K5		1	396	8
		1	396	8
		1	396	8
		1	396	8
		1	396	8
		1	396	8
		1	396	8
		1	396	8
		1	396	8
		1	396	8
		1	396	8
		1	396	8
		1	396	8
		1	396	8
		1	396	8
		1	396	8
		1	396	8
		1	399	30
		1	399	30
		1	399	30

# 25-28-35

ILLUSTRATED PARTS LIST

Page 1022

Mar 01/2006



COMPONENT MAINTENANCE MANUAL

PART NUMBER	AIRLINE PART NUMBER	FIGURE	ITEM	UNITS PER ASSEMBLY
		1	399	30
		1	399	30
		1	399	30
		1	399	30
		1	399	30
		1	399	30
		1	399	30
		1	399	30
		1	399	30
		2	396	8
		2	396	8
		2	396	8
		2	396	8
		2	396	8
		2	396	8
		2	396	8
		2	396	8
		2	396	8
		2	396	8
		2	396	8
		2	396	8
		2	396	8
		2	396	8
		2	399	30
		2	399	30
		2	399	30
		2	399	30
		2	399	30
		2	399	30
		2	399	30
		2	399	30
		2	399	30
		2	399	30
		2	399	30
		2	399	30
BACS12H4-8		1	225	2
		2	225	2

25-28-35

BOEING PROPRIETARY - Copyright © Unpublished Work - See title page for details



## COMPONENT MAINTENANCE MANUAL

PART NUMBER	AIRLINE PART NUMBER	FIGURE	ITEM	UNITS PER ASSEMBLY
BACS18C8-6		1	67	1
		2	67	1
BACS28B6-220P		1	104	1
BACW10F136AL		2	276	2
BACW10P136AL		1	276	3
		1	276	3
		2	276	2
BACW10UD10		1	31	3
		2	31	3
BR1000AD8		1	426	2
		2	426	2
F22K1-02		1	34	3
		2	34	3
F40WW		1	49	1
		2	49	1
H2948-1		1	321	1
		2	321	1
H2948-2		1	318	1
		2	318	1
H3-1145-1-5-760		2	393	1
H3-1145-1-5760		1	393	1
H3-1152-1		1	240	2
		2	240	2
HL10VAZ6-2		1	357	4
		1	357	4
		1	357	4
		1	357	4
		2	357	4
		2	357	4
		2	357	4
		2	357	4
		2	357	4
		2	357	4
K2000-08		1	426	2
		2	426	2
		2	426	2
L8006K2		1	357	4

# 25-28-35

ILLUSTRATED PARTS LIST

Page 1024

Mar 01/2006





## COMPONENT MAINTENANCE MANUAL

PART NUMBER	AIRLINE PART NUMBER	FIGURE	ITEM	UNITS PER ASSEMBLY
		2	357	4
LP1625-48		1	52	1
		2	52	1
MS20392-2C13		1	285	1
		2	285	1
MS21042L08		1	354A	4
		1	417A	11
		2	354A	4
		2	417A	11
MS21042L3		1	360A	4
		2	360A	4
MS24585-1230		1	70	1
		2	70	1
MS24665-132		1	282	1
		2	282	1
MS35333-39		1	192	4
		1	246	4
		2	192	4
		2	246	4
MS51861-15		1	222	2
		2	222	2
MS51862-4		1	219	2
		2	219	2
NAS1801-3-10		1	273A	1
		2	273A	2
NAS1801-3-11		1	73	1
		2	73	1
NAS1801-3-4		1	189	4
		2	189	4
NAS1801-3-5		1	22	3
		2	22	3
NAS1833-3-400		1	279	3
		1	599	6
		1	601	3
		1	605	10

# 25-28-35

ILLUSTRATED PARTS LIST

Page 1025

Mar 01/2006



## COMPONENT MAINTENANCE MANUAL

PART NUMBER	AIRLINE PART NUMBER	FIGURE	ITEM	UNITS PER ASSEMBLY
NAS1836-3-11		2	279	6
		1	453	14
		1	461	4
		1	473	4
		1	482	4
		1	491	4
		1	500	4
		1	509	8
		1	518	8
		1	522	8
		1	527	8
		1	536	8
		1	545	8
		1	551	8
		1	557	8
		1	563	8
		1	569	8
		1	587	4
		1	593	4
	NAS1836-4-11		1	615
		2	453	14
		2	473	4
		2	482	4
		2	509	4
		2	551	8
		2	587	4
		2	593	4
		1	503	1
		1	512	2
		1	520	2
		1	523	2
NAS43DD3-3		1	530	2
		1	539	2
		2	512	1
		1	310	1

# 25-28-35

ILLUSTRATED PARTS LIST

Page 1026

Mar 01/2006



## COMPONENT MAINTENANCE MANUAL

PART NUMBER	AIRLINE PART NUMBER	FIGURE	ITEM	UNITS PER ASSEMBLY
		2	310	1
NAS43DD3-5		1	309	1
		2	309	1
NAS43DD3-6		1	312	1
		2	312	1
NAS43DD3-8		1	314	1
		2	314	1
NAS514P832-5		1	381	4
		2	381	4
NAS620ABL		1	228	2
		2	228	2
NAS6703PU11		1	291	1
		2	291	1
NAS6703PU15		1	324	1
		2	324	1
RMA9207-82		1	426	2
		2	426	2
S283N702-3		1	37	1
		2	37	1
S412N101-1		1	240	2
		2	240	2
S412N101-1060		1	393	1
		2	393	1
S412N102-1		1	321	1
		2	321	1
S412N102-15		1	321A	1
S412N102-16		1	318A	1
S412N102-2		1	318	1
		2	318	1
S412N104-1		1	330	1
		2	330	1
S412N104-4		1	330A	1
S417N507-11		1	55	1
		2	55	1
S417N507-12		1	58	1

# 25-28-35

ILLUSTRATED PARTS LIST

Page 1027

Mar 01/2006



## COMPONENT MAINTENANCE MANUAL

PART NUMBER	AIRLINE PART NUMBER	FIGURE	ITEM	UNITS PER ASSEMBLY
S417N507-14		1	60	1
S417N507-2		1	56	1
		1	56	1
S417N507-4		1	57	1
		1	57	1
SB113		1	330	1
		2	330	1
SL210-06-2		1	378	4
		2	378	4
SL210-08-1		1	384	4
		2	384	4
SL2334-342		2	476	7
		2	485	4
SL2334-3A2		1	464	7
		1	476	7
		1	485	4
		1	494	4
		1	581	4
		2	581	4
SL618-3A		1	216	8
		2	216	1
T8109S832		1	426	2
		2	426	2
VN101A1-82		1	426	2
		2	426	2

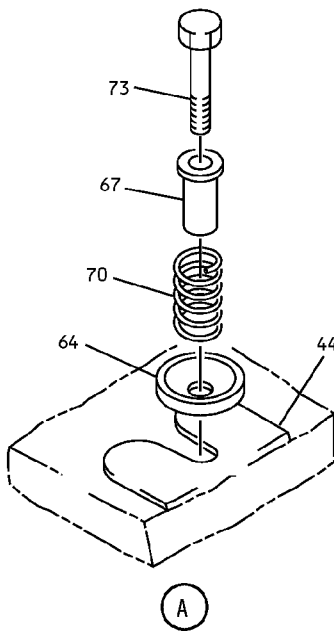
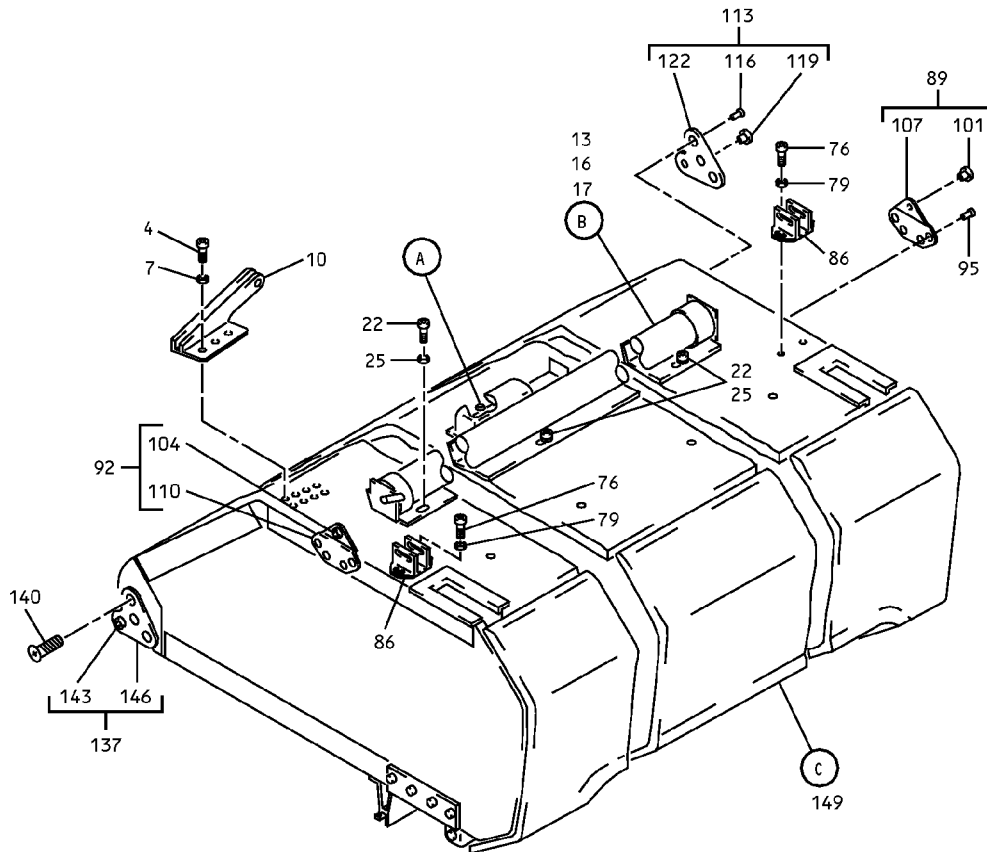
# 25-28-35

ILLUSTRATED PARTS LIST

Page 1028

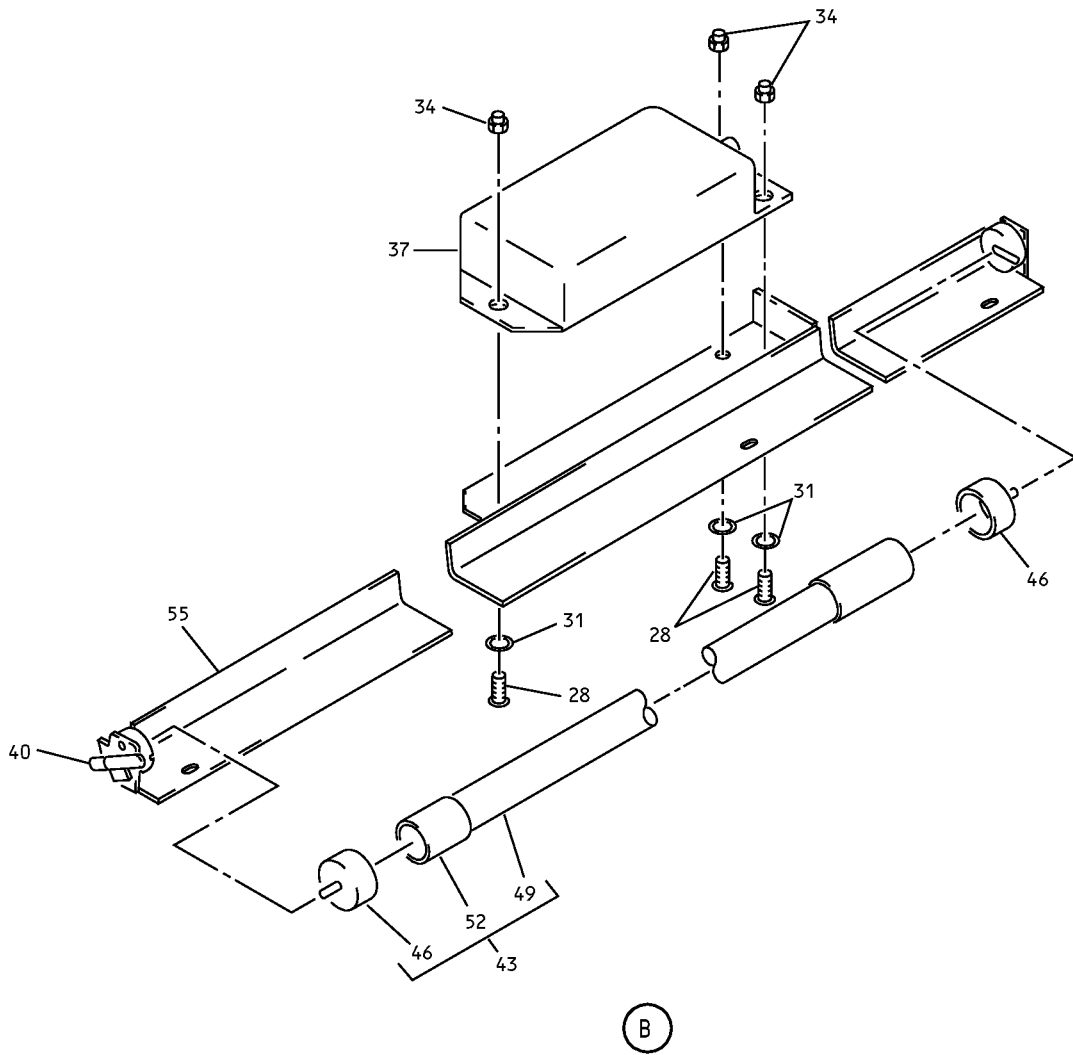
Mar 01/2006

COMPONENT MAINTENANCE MANUAL



Overhead Storage Compartment Assembly  
IPL Figure 1 (Sheet 1 of 10)

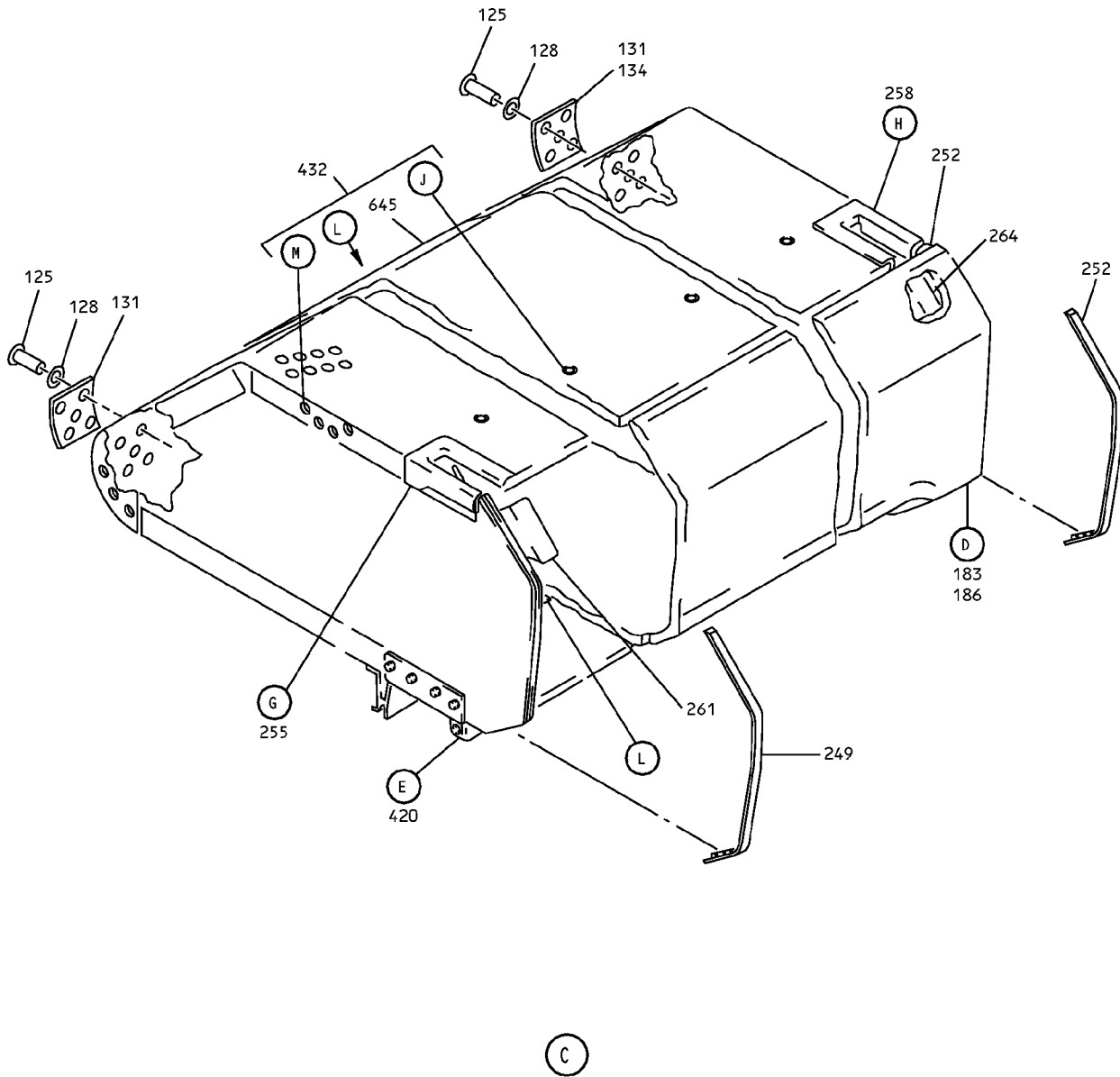
# COMPONENT MAINTENANCE MANUAL



Overhead Stowage Compartment Assembly  
IPL Figure 1 (Sheet 2 of 10)

**25-28-35**  
ILLUSTRATED PARTS LIST  
Page 1030  
Mar 01/2006

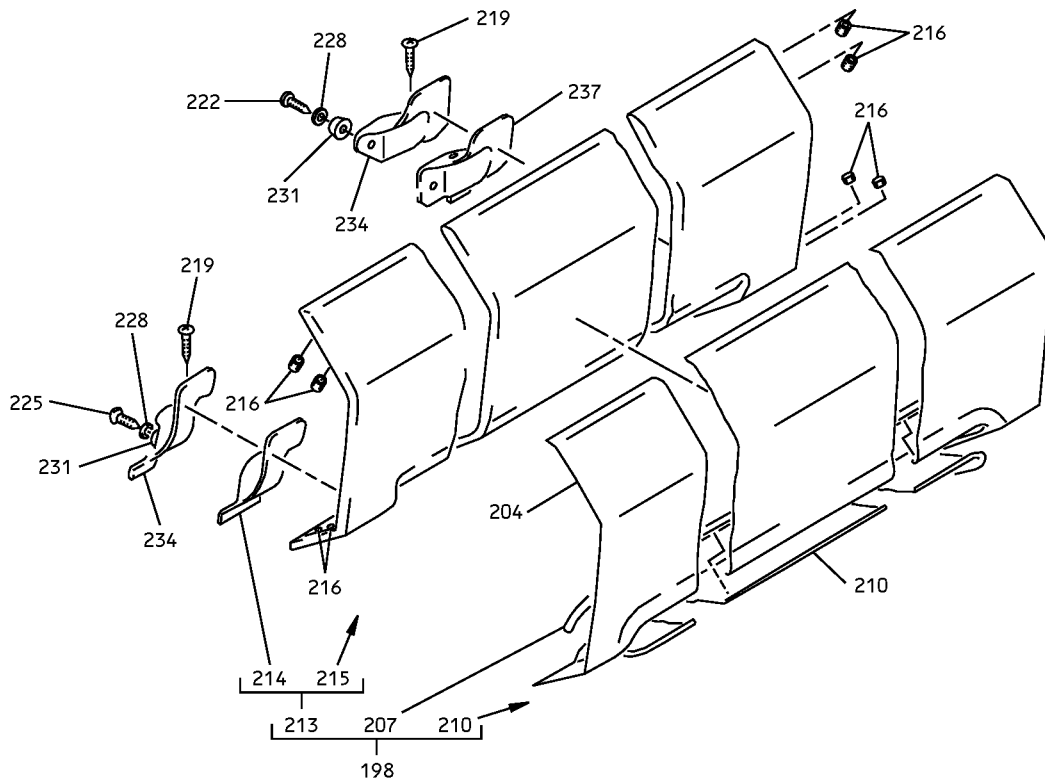
# COMPONENT MAINTENANCE MANUAL



Overhead Stowage Compartment Assembly  
IPL Figure 1 (Sheet 3 of 10)

**25-28-35**  
ILLUSTRATED PARTS LIST  
Page 1031  
Mar 01/2006

# COMPONENT MAINTENANCE MANUAL



D

Overhead Stowage Compartment Assembly  
IPL Figure 1 (Sheet 4 of 10)

## 25-28-35

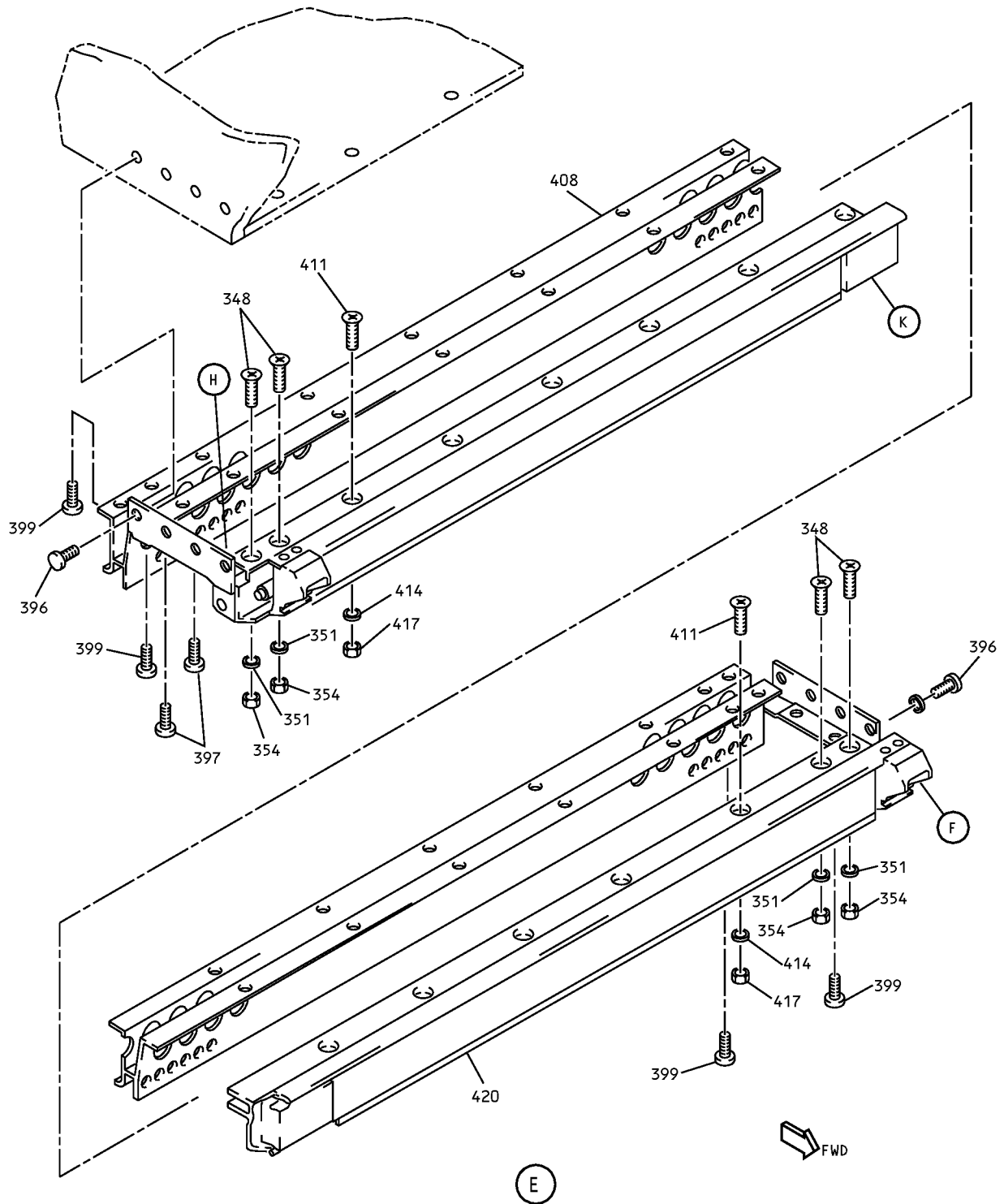
ILLUSTRATED PARTS LIST

Page 1032

Mar 01/2006

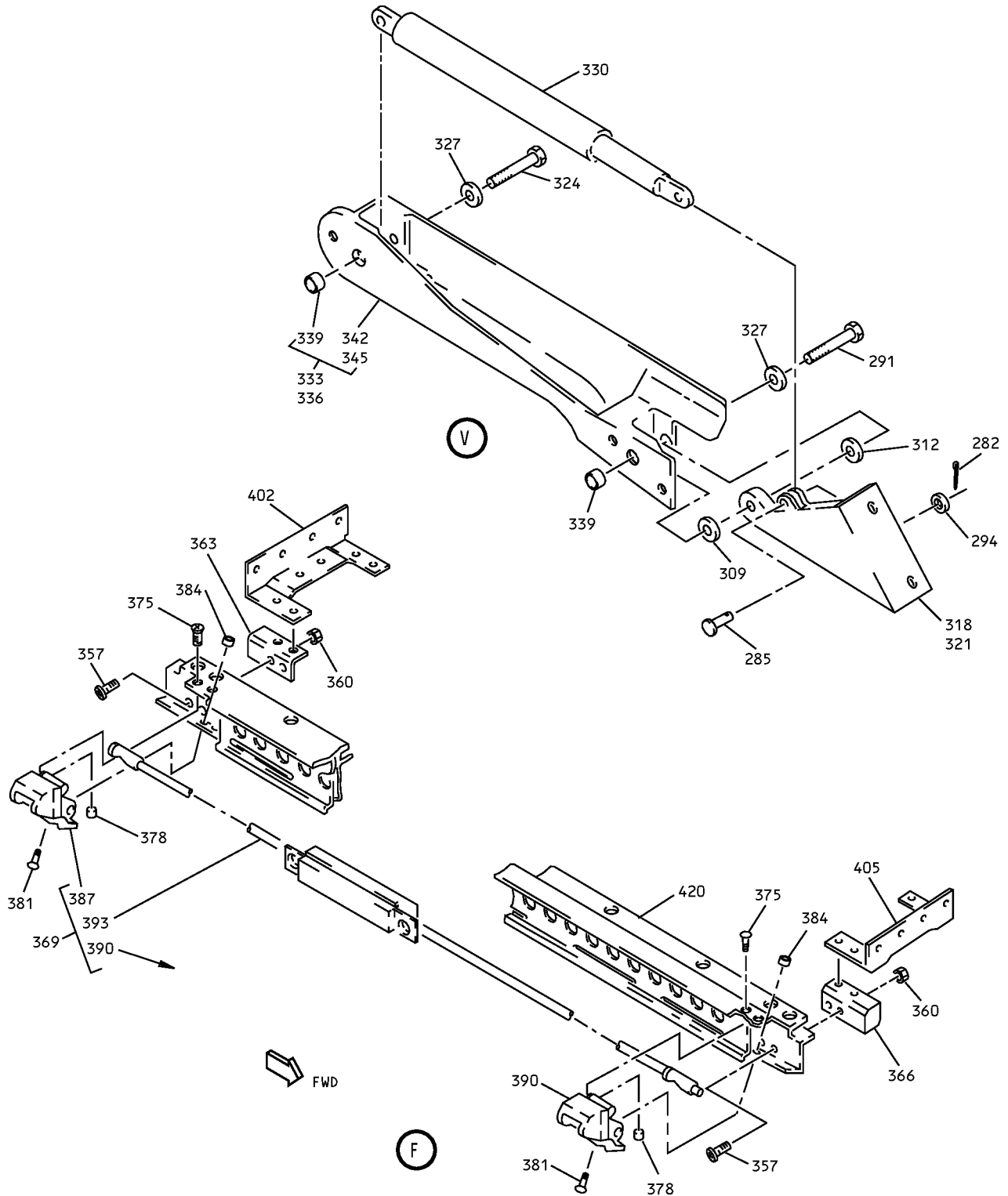


# COMPONENT MAINTENANCE MANUAL



Overhead Storage Compartment Assembly  
IPL Figure 1 (Sheet 5 of 10)

COMPONENT MAINTENANCE MANUAL



Overhead Stowage Compartment Assembly  
IPL Figure 1 (Sheet 6 of 10)

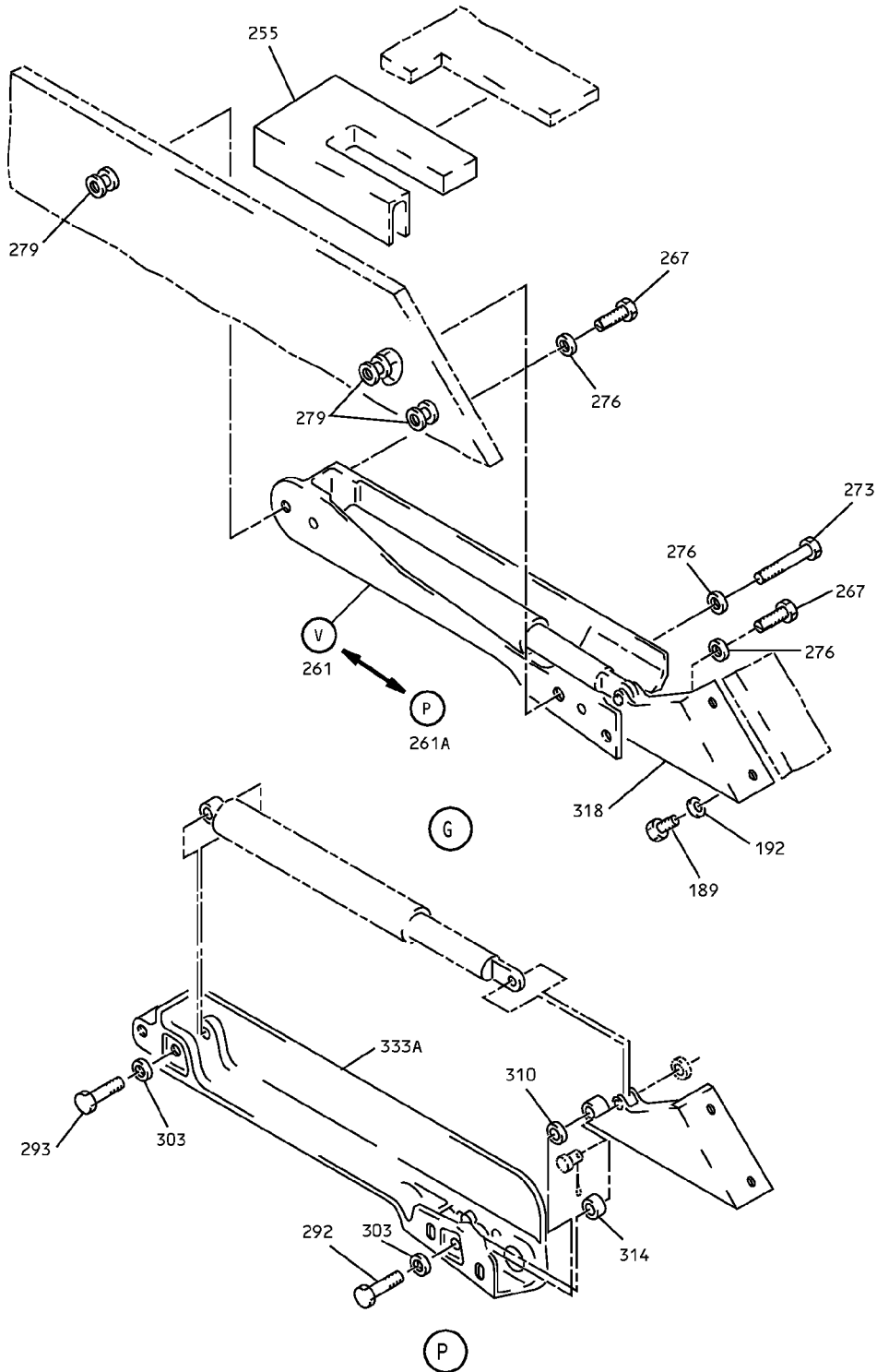
**25-28-35**

ILLUSTRATED PARTS LIST

Page 1034

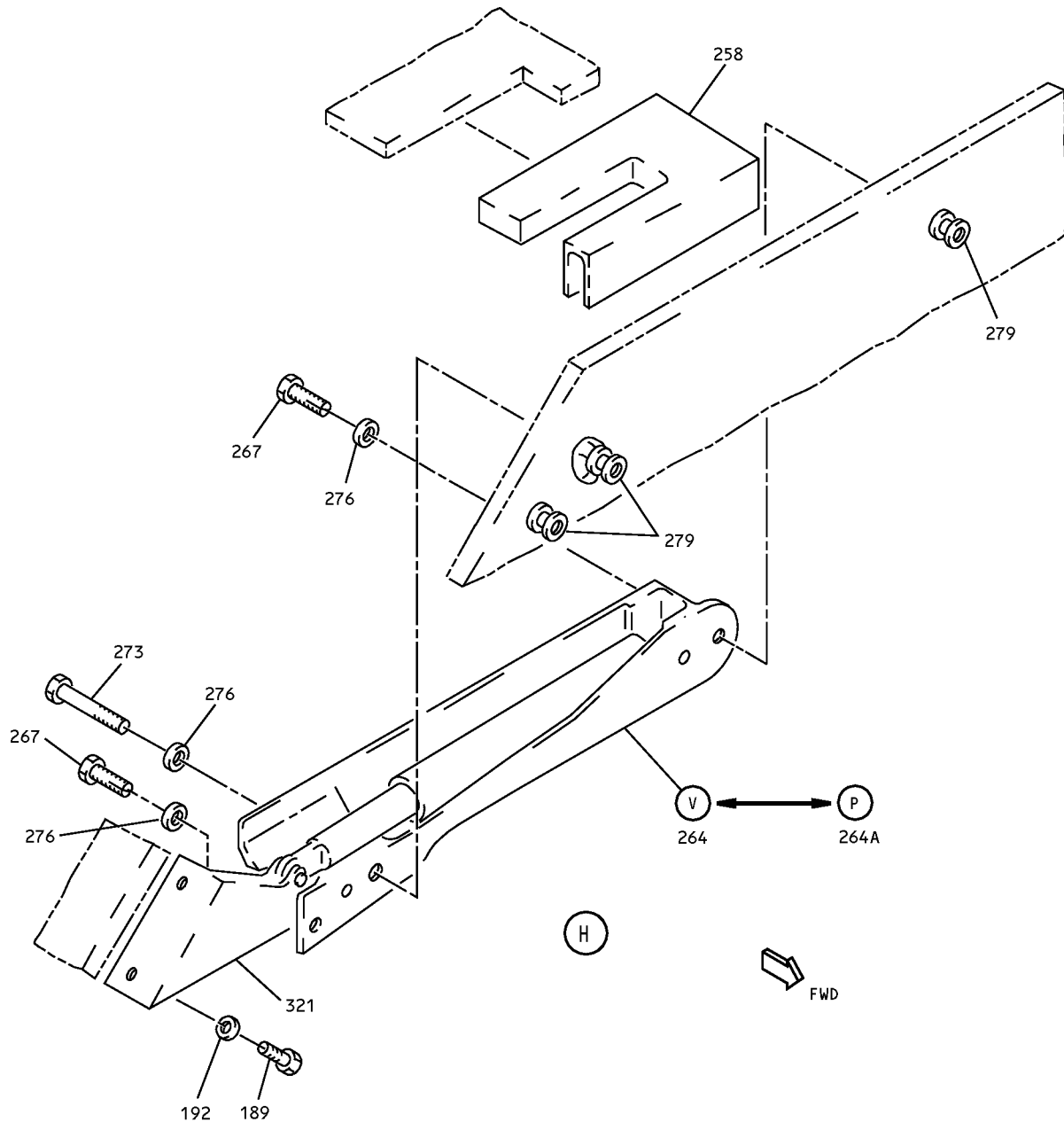
Mar 01/2006

# COMPONENT MAINTENANCE MANUAL



Overhead Storage Compartment Assembly  
IPL Figure 1 (Sheet 7 of 10)

COMPONENT MAINTENANCE MANUAL



Overhead Stowage Compartment Assembly  
IPL Figure 1 (Sheet 8 of 10)

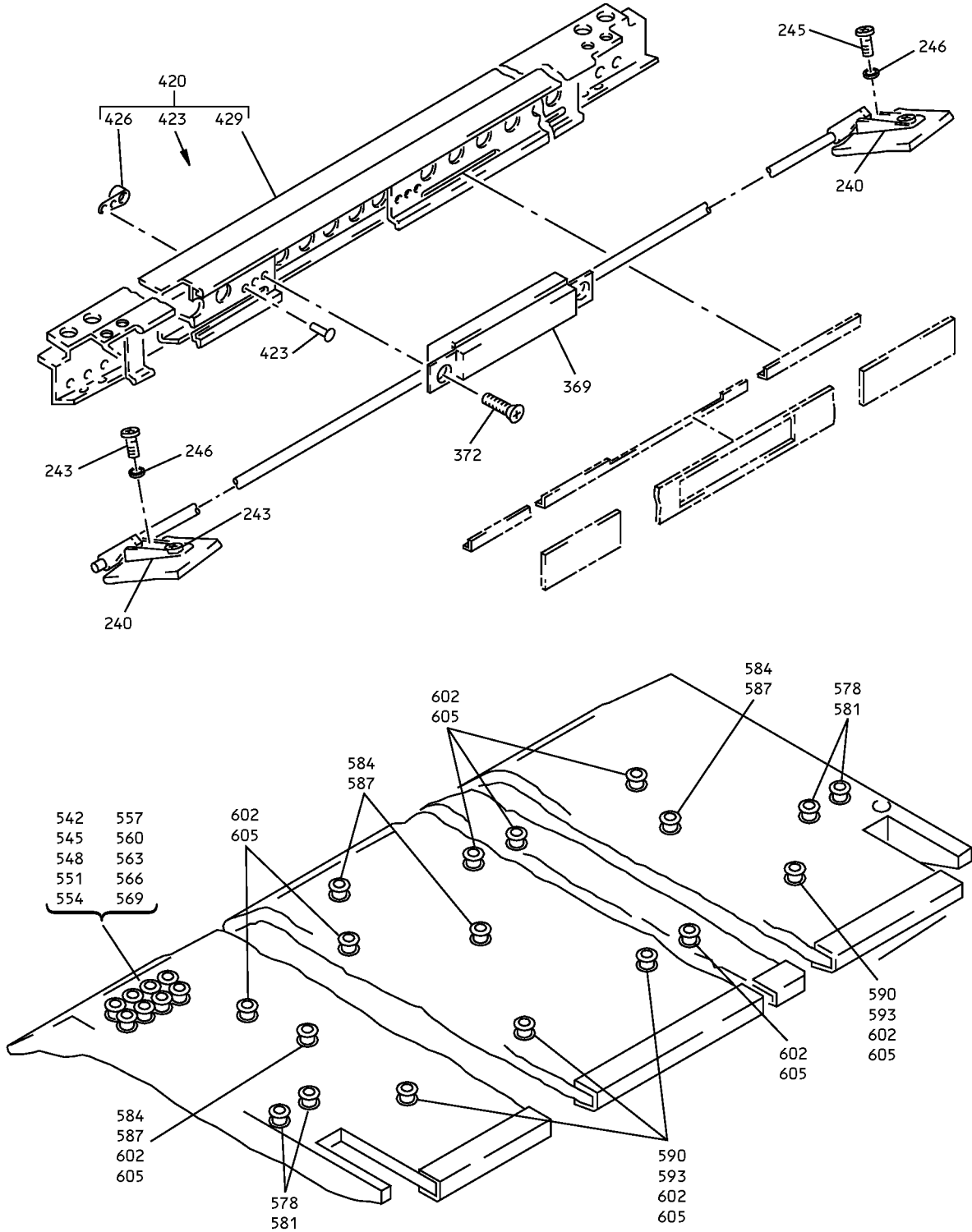
**25-28-35**

ILLUSTRATED PARTS LIST

Page 1036

Mar 01/2006

COMPONENT MAINTENANCE MANUAL



Overhead Storage Compartment Assembly  
IPL Figure 1 (Sheet 9 of 10)

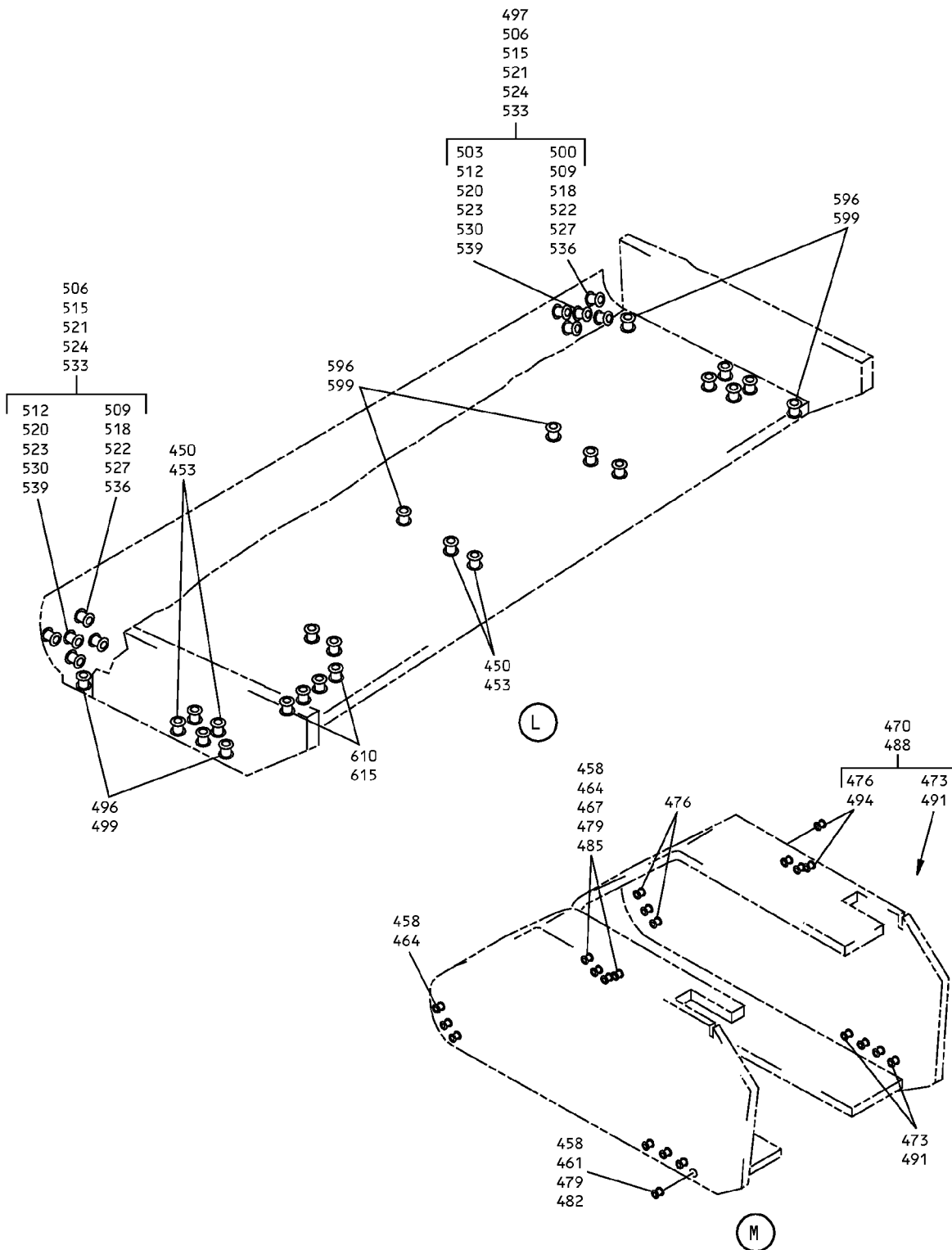
**25-28-35**

ILLUSTRATED PARTS LIST

Page 1037

Mar 01/2006

COMPONENT MAINTENANCE MANUAL



Overhead Storage Compartment Assembly  
IPL Figure 1 (Sheet 10 of 10)

**25-28-35**

ILLUSTRATED PARTS LIST

Page 1038

Mar 01/2006



## COMPONENT MAINTENANCE MANUAL

FIG/ ITEM	PART NUMBER	AIRLINE PART NUMBER	NOMENCLATURE							USAGE CODE	UNITS PER ASSY
			1	2	3	4	5	6	7		
1-											
-1	65C27005-2SP		COMPARTMENT ASSY-OVERHEAD STOWAGE 60-IN. STD (REWORKED BY ALERT SB 737- 25A1283) (REWORKED BY SB 737-25-1294) (NO EQUIVALENT BOEING REPLACEMENT PART NUMBER)							A	RF
-1A	65C27005-3SP		COMPARTMENT ASSY-OVERHEAD STOWAGE 60-IN. STD (REWORKED BY ALERT SB 737- 25A1283) (REWORKED BY SB 737-25-1294) (NO EQUIVALENT BOEING REPLACEMENT PART NUMBER) (FOR DETAILS SEE FIG. 2)								
-1B	65C27005-10SP		COMPARTMENT ASSY-OVERHEAD STOWAGE 60-IN. STD (REWORKED BY ALERT SB 737- 25A1283) (REWORKED BY SB 737-25-1294) (NO EQUIVALENT BOEING REPLACEMENT PART NUMBER)							B	RF
-1C	65C27005-12SP		COMPARTMENT ASSY-OVERHEAD STOWAGE 60-IN. STD (REWORKED BY ALERT SB 737- 25A1283) (REWORKED BY SB 737-25-1294) (NO EQUIVALENT BOEING REPLACEMENT PART NUMBER)							C	RF
-1D	65C27005-14SP		COMPARTMENT ASSY-OVERHEAD STOWAGE 60-IN. STD (REWORKED BY ALERT SB 737- 25A1283) (REWORKED BY SB 737-25-1294) (NO EQUIVALENT BOEING REPLACEMENT PART NUMBER)							D	RF
-1E	65C27005-42SP		COMPARTMENT ASSY-OVERHEAD STOWAGE 60-IN. STD (PRE SB 737-25-1237) (REWORKED BY ALERT SB 737- 25A1283) (REWORKED BY SB 737-25-1294) (NO EQUIVALENT BOEING REPLACEMENT PART NUMBER)							E	RF

-Item not Illustrated

# 25-28-35

ILLUSTRATED PARTS LIST

Page 1039

Mar 01/2006



### COMPONENT MAINTENANCE MANUAL

FIG/ ITEM	PART NUMBER	AIRLINE PART NUMBER	NOMENCLATURE							USAGE CODE	UNITS PER ASSY
			1	2	3	4	5	6	7		
1- -1F	65C27005-43SP		COMPARTMENT ASSY-OVERHEAD STOWAGE 60-IN. STD (FOR DETAILS SEE FIG. 2) (REWORKED BY ALERT SB 737- 25A1283) (REWORKED BY SB 737-25-1294) (NO EQUIVALENT BOEING REPLACEMENT PART NUMBER)								RF
-1G	65C27005-50SP		COMPARTMENT ASSY-OVERHEAD STOWAGE 60-IN. STD (REWORKED BY ALERT SB 737- 25A1283) (REWORKED BY SB 737-25-1294) (NO EQUIVALENT BOEING REPLACEMENT PART NUMBER)							F	RF
-1H	65C27005-52SP		COMPARTMENT ASSY-OVERHEAD STOWAGE 60-IN. STD (REWORKED BY ALERT SB 737- 25A1283) (REWORKED BY SB 737-25-1294) (NO EQUIVALENT BOEING REPLACEMENT PART NUMBER)							G	RF
-1J	65C27005-54SP		COMPARTMENT ASSY-OVERHEAD STOWAGE 60-IN. STD (REWORKED BY ALERT SB 737- 25A1283) (REWORKED BY SB 737-25-1294) (NO EQUIVALENT BOEING REPLACEMENT PART NUMBER)							H	RF
-1K	65C27005-58SP		COMPARTMENT ASSY-OVERHEAD STOWAGE 60-IN. STD (PRE SB 737-25-1237) (REWORKED BY ALERT SB 737- 25A1283) (REWORKED BY SB 737-25-1294) (NO EQUIVALENT BOEING REPLACEMENT PART NUMBER)							J	RF
-1L	65C27005-62SP		COMPARTMENT ASSY-OVERHEAD STOWAGE 60-IN. STD (REWORKED BY ALERT SB 737- 25A1283) (REWORKED BY SB 737-25-1294) (NO EQUIVALENT BOEING REPLACEMENT PART NUMBER)							K	RF

-Item not Illustrated

# 25-28-35

ILLUSTRATED PARTS LIST

Page 1040

Mar 01/2006





## COMPONENT MAINTENANCE MANUAL

FIG/ ITEM	PART NUMBER	AIRLINE PART NUMBER	NOMENCLATURE							USAGE CODE	UNITS PER ASSY
			1	2	3	4	5	6	7		
1- -1M	65C27005-64SP		COMPARTMENT ASSY-OVERHEAD STOWAGE 60-IN. STD (REWORKED BY ALERT SB 737- 25A1283) (REWORKED BY SB 737-25-1294) (NO EQUIVALENT BOEING REPLACEMENT PART NUMBER)							L	RF
-1N	65C27005-66SP		COMPARTMENT ASSY-OVERHEAD STOWAGE 60-IN. STD (PRE SB 737-15-1237) (REWORKED BY ALERT SB 737- 25A1283) (REWORKED BY SB 737-25-1294) (NO EQUIVALENT BOEING REPLACEMENT PART NUMBER)							M	RF
-1P	65C27005-68SP		COMPARTMENT ASSY-OVERHEAD STOWAGE 60-IN. STD (PRE SB 737-25-1237) (REWORKED BY ALERT SB 737- 25A1283) (REWORKED BY SB 737-25-1294) (NO EQUIVALENT BOEING REPLACEMENT PART NUMBER)							N	RF
-1Q	65C27005-70SP		COMPARTMENT ASSY-OVERHEAD STOWAGE 60-IN. STD (PRE SB 737-25-1237) (REWORKED BY ALERT SB 737- 25A1283) (REWORKED BY SB 737-25-1294) (NO EQUIVALENT BOEING REPLACEMENT PART NUMBER)							P	RF
-1R	65C27005-72SP		COMPARTMENT ASSY-OVERHEAD STOWAGE 60-IN. STD (PRE SB 737-25-1237) (REWORKED BY ALERT SB 737- 25A1283) (REWORKED BY SB 737-25-1294) (NO EQUIVALENT BOEING REPLACEMENT PART NUMBER)							Q	RF

-Item not Illustrated

# 25-28-35

ILLUSTRATED PARTS LIST

Page 1041

Mar 01/2006



## COMPONENT MAINTENANCE MANUAL

FIG/ ITEM	PART NUMBER	AIRLINE PART NUMBER	NOMENCLATURE							USAGE CODE	UNITS PER ASSY
			1	2	3	4	5	6	7		
1- -1S	65C27005-79SP		COMPARTMENT ASSY-OVERHEAD STOWAGE 60-IN. STD (REWORKED BY ALERT SB 737- 25A1283) (REWORKED BY SB 737-25-1294) (NO EQUIVALENT BOEING REPLACEMENT PART NUMBER)							R	RF
-1T	65C27005-80SP		COMPARTMENT ASSY-OVERHEAD STOWAGE 60-IN. STD (REWORKED BY ALERT SB 737- 25A1283) (REWORKED BY SB 737-25-1294) (NO EQUIVALENT BOEING REPLACEMENT PART NUMBER)							S	RF
-1U	65C27005-84SP		COMPARTMENT ASSY-OVERHEAD STOWAGE 60-IN. STD (REWORKED BY ALERT SB 737- 25A1283) (REWORKED BY SB 737-25-1294) (NO EQUIVALENT BOEING REPLACEMENT PART NUMBER)							T	RF
-1V	65C27005-86SP		COMPARTMENT ASSY-OVERHEAD STOWAGE 60-IN. STD (PRE SB 737-25-1237) (REWORKED BY ALERT SB 737- 25A1283) (REWORKED BY SB 737-25-1294) (NO EQUIVALENT BOEING REPLACEMENT PART NUMBER)							U	RF
-1W	65C27005-88SP		COMPARTMENT ASSY-OVERHEAD STOWAGE 60-IN. STD (REWORKED BY ALERT SB 737- 25A1283) (REWORKED BY SB 737-25-1294) (NO EQUIVALENT BOEING REPLACEMENT PART NUMBER)							V	RF
-1X	65C27005-101SP		COMPARTMENT ASSY-OVERHEAD STOWAGE 60-IN. STD (REWORKED BY ALERT SB 737- 25A1283) (REWORKED BY SB 737-25-1294) (NO EQUIVALENT BOEING REPLACEMENT PART NUMBER)							W	RF

-Item not Illustrated

# 25-28-35

ILLUSTRATED PARTS LIST

Page 1042

Mar 01/2006



## COMPONENT MAINTENANCE MANUAL

FIG/ ITEM	PART NUMBER	AIRLINE PART NUMBER	NOMENCLATURE							USAGE CODE	UNITS PER ASSY
			1	2	3	4	5	6	7		
1-											
-2A	65C27005-106SP									X	RF
-2B	65C27005-108SP									Y	RF
-2C	65C27005-112SP									Z	RF
-2D	65C27005-114SP									BA	RF
-2E	65C27005-116SP									CA	RF
-2F	65C27005-118SP									DA	RF

-Item not Illustrated

# 25-28-35

ILLUSTRATED PARTS LIST

Page 1043

Mar 01/2006



### COMPONENT MAINTENANCE MANUAL

FIG/ ITEM	PART NUMBER	AIRLINE PART NUMBER	NOMENCLATURE							USAGE CODE	UNITS PER ASSY
			1	2	3	4	5	6	7		
1-											
-2G	65C27005-120SP									EA	RF
-2H	65C27005-123SP									FA	RF
-2J	65C27005-125SP									GA	RF
-3	65C34485-6SP									HA	RF
-3A	65C34485-8SP									IA	RF
-3B	65C34485-12SP									JA	RF
-3C	65C34485-14SP									KA	RF
-3D	65C34485-16SP									LA	RF
-3E	65C34485-18SP									MA	RF
-3F	65C34485-20SP									NA	RF

-Item not Illustrated

# 25-28-35

ILLUSTRATED PARTS LIST

Page 1044

Mar 01/2006



COMPONENT MAINTENANCE MANUAL

FIG/ ITEM	PART NUMBER	AIRLINE PART NUMBER	NOMENCLATURE							USAGE CODE	UNITS PER ASSY
			1	2	3	4	5	6	7		
1- -3G	65C34485-22SP		COMPARTMENT ASSY-OVERHEAD STOWAGE 60-IN (POST SB 737-25-1237)							PA	RF
4	BACB30NM3K1		. BOLT (V06710) (SPEC BACB30NM3K1) (OPT BACB30NM3K1 (V06725)) (OPT BACB30NM3K1 (V06950)) (OPT BACB30NM3K1 (V08524)) (OPT BACB30NM3K1 (V27624)) (OPT BACB30NM3K1 (V56878)) (OPT BACB30NM3K1 (V73197)) (OPT BACB30NM3K1 (V80539)) (OPT BACB30NM3K1 (V92215)) (OPT BACB30NM3K1 (V93907)) (OPT BACB30NM3K1 (V97928))								8
7	AN960PD10		DELETED								
7A	AN960JD10		. WASHER								8
10	412N1119-13		. FITTING (OPT ITEM 10A)								1
10A	412N1161-1		. FITTING (OPT ITEM 10)								1
13	417N5120-14		. LIGHT ASSY (OPT ITEM 13A)							D, H, L, Q, U	1
13A	417N5120-1		. LIGHT ASSY (OPT ITEM 13)							D, H, L, Q, U	1
13B	417N5120-14		. LIGHT ASSY							BA, FA, GA	1
16	417N5120-15		. LIGHT ASSY (OPT ITEM 16A)							A, B, E, F, N, R, W, X, DA	1
16A	417N5120-2		. LIGHT ASSY (OPT ITEM 16)							A, B, E, F, N, R, W, X, DA	1
16B	417N5120-15		. LIGHT ASSY							X, DA	1
17	417N5120-17		. LIGHT ASSY (OPT ITEM 17A)							C, G, J, K, M, P, S, T, V, Y, Z, CA, EA	1

-Item not Illustrated

**25-28-35**

ILLUSTRATED PARTS LIST

Page 1045

Mar 01/2006



COMPONENT MAINTENANCE MANUAL

FIG/ ITEM	PART NUMBER	AIRLINE PART NUMBER	NOMENCLATURE							USAGE CODE	UNITS PER ASSY
			1	2	3	4	5	6	7		
1-											
17A	417N5120-4		.	LIGHT ASSY (OPT ITEM 17)						C, G, J, K, M, P, S, T, V, Y, Z, CA, EA	1
17B	417N5120-17		.	LIGHT ASSY						Y, Z, CA, EA	1
				ATTACHING PARTS							
22	NAS1801-3-5		.	SCREW							3
25	AN960PD10L			DELETED							
25A	AN960JD10LL		.	WASHER							3
				-----*							
28	BACS12ER3K6		. .	SCREW (V06710) (SPEC BACS12ER3K6) (OPT BACS12ER3K6 (V06725)) (OPT BACS12ER3K6 (V06950)) (OPT BACS12ER3K6 (V27624)) (OPT BACS12ER3K6 (V34252)) (OPT BACS12ER3K6 (V56878)) (OPT BACS12ER3K6 (V73197)) (OPT BACS12ER3K6 (V80539)) (OPT BACS12ER3K6 (V92215)) (OPT BACS12ER3K6 (V93907)) (OPT BACS12ER3K6 (V97928))						A, B, D, E, F, H, L, N, Q, R, U, W, X, BA, DA, FA, GA	3
31	BACW10UD10		. .	WASHER						A, B, D, E, F, H, L, N, Q, R, U, W, X, BA, DA, FA, GA	3
34	F22K1-02		. .	NUT (V72962) (SPEC BACN10R10L) (OPT 22K1-02 (V72962)) (OPT 26CL-02 (V80539))						A, B, D, E, F, H, L, N, Q, R, U, W, X, BA, DA, FA, GA	3

-Item not Illustrated

**25-28-35**

ILLUSTRATED PARTS LIST

Page 1046

Mar 01/2006



## COMPONENT MAINTENANCE MANUAL

FIG/ ITEM	PART NUMBER	AIRLINE PART NUMBER	NOMENCLATURE							USAGE CODE	UNITS PER ASSY	
			1	2	3	4	5	6	7			
1- 37	05939-3		.	.							A, B, D, E, F, H, L, N, Q, R, U, W, X, BA, DA, FA, GA	1
40	1864		.	.							D, H, L, Q, U, BA, FA, GA	1
43	417N5120-10		.	.								1
44	65C28117-3		.	.								1
46	2055150		.	.	.							2
49	F40WW		.	.	.	.						1
52	LP1625-48		.	.	.	.						1
55	800000255-11		.	.							D, H, L, Q, U, BA, FA, GA	1
-56	S417N507-2		.	.								1
56A	800000255-1		.	.								1
-57	S417N507-4		.	.								1
-58	800000255-12		.	.								1
-60	800000255-14		.	.								1

-Item not Illustrated

**25-28-35**

ILLUSTRATED PARTS LIST

Page 1047

Mar 01/2006



## COMPONENT MAINTENANCE MANUAL

FIG/ ITEM	PART NUMBER	AIRLINE PART NUMBER	NOMENCLATURE							USAGE CODE	UNITS PER ASSY							
			1	2	3	4	5	6	7									
1- 64	411N3142-28		.	W	A	S	H	E	R	-	C	U	P	P	E	D	A, B, D, E, F, H, L, N, Q, R, U, W, X, BA, DA, FA, GA	1
67	BACS18C8-6		.	S	P	A	C	E	R								A, B, D, E, F, H, L, N, Q, R, U, W, X, BA, DA, FA, GA	1
70	MS24585-1230		.	S	P	R	I	N	G								A, B, D, E, F, H, L, N, Q, R, U, W, X, BA, DA, FA, GA	1
73	NAS1801-3-11		.	S	C	R	E	W									A, B, D, E, F, H, L, N, Q, R, U, W, X, BA, DA, FA, GA	1
76	BACB30NM3K1		.	B	O	L	T										(V06710) (SPEC BACB30NM3K1) (OPT BACB30NM3K1 (V06725)) (OPT BACB30NM3K1 (V06950)) (OPT BACB30NM3K1 (V08524)) (OPT BACB30NM3K1 (V27624)) (OPT BACB30NM3K1 (V56878)) (OPT BACB30NM3K1 (V73197)) (OPT BACB30NM3K1 (V80539)) (OPT BACB30NM3K1 (V92215)) (OPT BACB30NM3K1 (V93907)) (OPT BACB30NM3K1 (V97928))	4
79	AN960PD10																	
79A	AN960JD10		.	W	A	S	H	E	R									4
86	411N3134-1		.	B	R	A	C	K	E	T								2

-Item not Illustrated

# 25-28-35

ILLUSTRATED PARTS LIST

Page 1048

Mar 01/2006





COMPONENT MAINTENANCE MANUAL

FIG/ ITEM	PART NUMBER	AIRLINE PART NUMBER	NOMENCLATURE							USAGE CODE	UNITS PER ASSY	
			1	2	3	4	5	6	7			
1-												
89	412N1119-1		.									1
92	412N1119-1		.									1
			ATTACHING PARTS									
95	BACS12ER3K6		.									4
			(V06710) (SPEC BACS12ER3K6) (USED ON ITEM 89) (OPT BACS12ER3K6 (V06725)) (OPT BACS12ER3K6 (V06950)) (OPT BACS12ER3K6 (V27624)) (OPT BACS12ER3K6 (V34252)) (OPT BACS12ER3K6 (V56878)) (OPT BACS12ER3K6 (V73197)) (OPT BACS12ER3K6 (V80539)) (OPT BACS12ER3K6 (V92215)) (OPT BACS12ER3K6 (V93907)) (OPT BACS12ER3K6 (V97928))									
98	BACS12ER3K6		.									4
			(V06710) (SPEC BACS12ER3K6) (OPT BACS12ER3K6 (V06725)) (OPT BACS12ER3K6 (V06950)) (OPT BACS12ER3K6 (V27624)) (OPT BACS12ER3K6 (V34252)) (OPT BACS12ER3K6 (V56878)) (OPT BACS12ER3K6 (V73197)) (OPT BACS12ER3K6 (V80539)) (OPT BACS12ER3K6 (V92215)) (OPT BACS12ER3K6 (V93907)) (OPT BACS12ER3K6 (V97928)) (USED ON ITEM 92)									
			----- *									
101	BACB28B6-220P		.	.								1
104	BACS28B6-220P		.	.								1
107	412N1119-2		.	.								1
			(USED ON ITEM 89)									
110	412N1119-2		.	.								1
			(USED ON ITEM 92)									
113	412N1119-15		.								A, E, J, R, X	1

-Item not Illustrated

**25-28-35**

ILLUSTRATED PARTS LIST

Page 1049

Mar 01/2006



COMPONENT MAINTENANCE MANUAL

FIG/ ITEM	PART NUMBER	AIRLINE PART NUMBER	NOMENCLATURE							USAGE CODE	UNITS PER ASSY
			1	2	3	4	5	6	7		
1-			ATTACHING PARTS								
116	BACS12ER3K6		. SCREW (V06710) (SPEC BACS12ER3K6) (OPT BACS12ER3K6 (V06725)) (OPT BACS12ER3K6 (V06950)) (OPT BACS12ER3K6 (V27624)) (OPT BACS12ER3K6 (V34252)) (OPT BACS12ER3K6 (V56878)) (OPT BACS12ER3K6 (V73197)) (OPT BACS12ER3K6 (V80539)) (OPT BACS12ER3K6 (V92215)) (OPT BACS12ER3K6 (V93907)) (OPT BACS12ER3K6 (V97928))								1
			-----*								
119	BACB28B6-250P		. . BUSHING							A, E, J, R	1
122	412N1119-17		. . FITTING							A, E, J, R	1
125	BACB30NM3K1		. BOLT (V06710) (SPEC BACB30NM3K1) (OPT BACB30NM3K1 (V06725)) (OPT BACB30NM3K1 (V06950)) (OPT BACB30NM3K1 (V08524)) (OPT BACB30NM3K1 (V27624)) (OPT BACB30NM3K1 (V56878)) (OPT BACB30NM3K1 (V73197)) (OPT BACB30NM3K1 (V80539)) (OPT BACB30NM3K1 (V92215)) (OPT BACB30NM3K1 (V93907)) (OPT BACB30NM3K1 (V97928))							B, C, D, F-Q, S-W	4
128	AN960PD10		DELETED								
128A	AN960JD10		. WASHER							B, C, D, F-Q, S-W	4
131	412N1119-12		. FITTING							C, D, G, H, K-Q, S-W, Z- GA	2
134	412N1119-12		. FITTING							B, F	1
137	412N1119-16		. FITTING ASSY							B, F, J, Y	1
-137A	412N1119-24		. FITTING							A, E, R, X	1

-Item not Illustrated

**25-28-35**



### COMPONENT MAINTENANCE MANUAL

FIG/ ITEM	PART NUMBER	AIRLINE PART NUMBER	NOMENCLATURE							USAGE CODE	UNITS PER ASSY
			1	2	3	4	5	6	7		
1-			ATTACHING PARTS								
140	BACS12ER3K6		.								3
			(V06710) (SPEC BACS12ER3K6) (OPT BACS12ER3K6 (V06725)) (OPT BACS12ER3K6 (V06950)) (OPT BACS12ER3K6 (V27624)) (OPT BACS12ER3K6 (V34252)) (OPT BACS12ER3K6 (V56878)) (OPT BACS12ER3K6 (V73197)) (OPT BACS12ER3K6 (V80539)) (OPT BACS12ER3K6 (V92215)) (OPT BACS12ER3K6 (V93907)) (OPT BACS12ER3K6 (V97928))								
			-----*-----								
143	BACB38B6-250P		.	.						B, F, J	1
146	412N1119-18		.	.						B, F, J	1
149	65C27008-2SP		.							A	1
-152	65C27008-10SP		.							B	1
-155	65C27008-12SP		.							C, D	1
164	65C27008-42SP		.							E, J	1
-164A	65C34485-26		.							HA, IA	1
167	65C27008-50SP		.							F	1
170	65C27008-52SP		.							G, H	1
-171	65C27008-64SP		.							K	1
-171A	65C34485-32		.							JA	1
-172	65C27008-66SP		.							L	1
-173	65C27008-68SP		.							M	1
-173A	65C34485-36		.							LA	1
-174	65C27008-70SP		.							N, P, Q	1
-174A	65C27008-76SP		.							R	1
-174B	65C34485-38		.							MA-PA	1
-176	65C27008-77SP		.							S	1
-180	65C27008-81SP		.							T	1
-181	65C27008-83SP		.							U	1

-Item not Illustrated

# 25-28-35

ILLUSTRATED PARTS LIST

Page 1051

Mar 01/2006



COMPONENT MAINTENANCE MANUAL

FIG/ ITEM	PART NUMBER	AIRLINE PART NUMBER	NOMENCLATURE							USAGE CODE	UNITS PER ASSY
			1	2	3	4	5	6	7		
1-											
-181A	65C34485-34		.							KA	1
-182	65C27008-85SP		.							V	1
-182A	65C27008-94SP		.							W	1
-182C	65C27008-99SP		.							XY	1
-182E	65C27008-104SP		.							Z	1
-182F	65C27008-106SP		.							BA	1
-182G	65C27008-108SP		.							CA	1
-182H	65C27008-110SP		.							DA-FA	1
-182J	65C27008-115SP		.							GA	1
183	412N1140-1SP		..							A-D	1
186	412N1140-41SP		..							E-GA	1
-186A	412N1140-88SP		..							HA-PA	1
			ATTACHING PARTS								
189	NAS1801-3-4		..								4
192	MS35333-39		..								4
195	AN960PD10L		DELETED								
			-----*-----								
198	412N1140-18SP		...							A-D	1
-201	412N1140-58SP		...							E-GA	1
204	412N1141-1SP		....								1
207	412N1140-13		....								1
210	412N1141-7SP		....								1
213	412N1142-15		....								1
214	412N1142-11		.....								1
215	412N1142-12		.....								1
216	SL618-3A		...								8
											(V97393)
219	MS51862-4		...								2
222	MS51861-15		...								2
225	BACS12H4-8		...							A-D	2
228	NAS620ABL		...							E-GA	2
231	412N1245-1		...								2

-Item not Illustrated

**25-28-35**

ILLUSTRATED PARTS LIST  
Page 1052  
Mar 01/2006



COMPONENT MAINTENANCE MANUAL

FIG/ ITEM	PART NUMBER	AIRLINE PART NUMBER	NOMENCLATURE							USAGE CODE	UNITS PER ASSY
			1	2	3	4	5	6	7		
1-											
234	412N1143-13SP										1
237	412N1143-14SP										1
240	H3-1152-1										2
243	BACS12FA3K4										4
246	MS35333-39										4
249	412N1118-1SP										1
252	412N1118-2SP										1
255	412N1154-2								A-W		1
255A	412N1154-6								X-FA		1
258	412N1154-1								A-W		1
258A	412N1154-5								X-FA		1
261	412N1155-1								A-D		1
-261A	412N1155-7								E-W		1
-261B	412N1155-1								E-W		1
-261C	412N1155-13								X-FA		1
-261D	412N1155-25								HA-PA		1
264	412N1155-2								A-D		1
-264A	412N1155-8								E-W		1
-264B	412N1155-2								E-W		1
-264C	412N1155-14								X-FA		1
-264E	412N1155-7								GA		1
-264F	412N1155-8								GA		1
-264G	412N1155-26								HA-PA		1
267	412N1227-1										4

-Item not Illustrated

**25-28-35**

ILLUSTRATED PARTS LIST  
Page 1053  
Mar 01/2006



## COMPONENT MAINTENANCE MANUAL

FIG/ ITEM	PART NUMBER	AIRLINE PART NUMBER	NOMENCLATURE							USAGE CODE	UNITS PER ASSY
			1	2	3	4	5	6	7		
1-											
270	A1C1321-3-8								. . BOLT (OPT ITEM 267)		4
273	BACB30LK3-18								. . BOLT (USED WITH ITEMS 261B, 264)		1
-273A	NAS1801-3-10								. . SCREW (USED WITH ITEMS 261A, 264A)		1
276	BACW10P136AL								. . WASHER (V10630) (SPEC BACW10P136AL)		3
279	NAS1833-3-400								. . INSERT  -----*-----		3
282	MS24665-132								. . . PIN-COTTER		1
285	MS20392-2C13								. . . PIN-DRILLED SHANK		1
291	NAS6703PU11								. . . BOLT (USED ON ITEMS 261,261B,264,264B)		1
292	BACB30NM3K8								. . . BOLT (USED ON ITEMS 261A,261C,264A,264C,264E,264F)		1
293	BACB30NM3K12								. . . BOLT (USED ON ITEMS 261A,261C,264A,264C,264E,264F)		1
294	AN960PD10L								. . . WASHER (USED ON ITEMS 261,261B,264,264B)		1
303	AN960KD10L								DELETED		
-303A	AN960JD10L								. . . WASHER (USED ON ITEMS 261A,261C,264A,264C,264E,264F)		2
309	NAS43DD3-5								. . . SPACER (USED ON ITEMS 261,261B,264,264B)		1
310	NAS43DD3-3								. . . SPACER (USED ON ITEMS 261A,261C,264A,264C,264E,264F)		1
312	NAS43DD3-6								. . . SPACER (USED ON ITEMS 261,261B,264,264B)		1

-Item not Illustrated

# 25-28-35

ILLUSTRATED PARTS LIST

Page 1054

Mar 01/2006



## COMPONENT MAINTENANCE MANUAL

FIG/ ITEM	PART NUMBER	AIRLINE PART NUMBER	NOMENCLATURE							USAGE CODE	UNITS PER ASSY
			1	2	3	4	5	6	7		
1-											
314	NAS43DD3-8		. . .	SPACER (USED ON ITEMS 261A,261C,264A,264C,264E,264F)							1
318	H2948-2		. . .	HINGE (V83014) (SPEC S412N102-2) (USED ON ITEMS 261,261A,261B,264E)							1
318A	S412N102-16		. . .	HINGE (USED ON ITEM 261C)							1
321	H2948-1		. . .	HINGE (V83014) (SPEC S412N102-1) (USED ON ITEMS 264,264A,264B,264F)							1
321A	S412N102-15		. . .	HINGE (USED ON ITEM 264C)							1
324	NAS6703PU15		. . .	BOLT (USED ON ITEMS 261,261B,264,264B)							1
327	AN960JD10L		. . .	WASHER (USED ON ITEMS 261,261B,264,264B)							1
330	SB113		. . .	ACTUATOR (V24984) (SPEC S412N104-1)					A-H, J-P, Q-GA		1
-330A	S412N104-4		. . .	ACTUATOR (V24984)					HA-PA		1
333	412N1156-1		. . .	CHASSIS ASSY (USED ON ITEMS 261,261B)							1
-333A	412N1156-13		. . .	CHASSIS ASSY (USED ON ITEM 261A)							1
336	412N1156-2		. . .	CHASSIS ASSY (USED ON ITEM 264)							1
-336A	412N1156-14		. . .	CHASSIS ASSY (USED ON ITEM 264A)							1
-336B	412N1156-21		. . .	CHASSIS ASSY (USED ON ITEM 261C)							1
-336C	412N1156-22		. . .	CHASSIS ASSY (USED ON ITEM 264C)							1

-Item not illustrated

**25-28-35**

ILLUSTRATED PARTS LIST

Page 1055

Mar 01/2006



## COMPONENT MAINTENANCE MANUAL

FIG/ ITEM	PART NUMBER	AIRLINE PART NUMBER	NOMENCLATURE							USAGE CODE	UNITS PER ASSY
			1	2	3	4	5	6	7		
1-											
339	6041-3BR225								.... INSERT-DODGE (V01556)		2
342	412N1156-3								.... CHASSIS (USED ON ITEM 333)		1
343	412N1156-15								.... CHASSIS (USED ON ITEM 333A)		1
345	412N1156-4								.... CHASSIS (USED ON ITEM 336)		1
346	412N1156-16								.... CHASSIS (USED ON ITEM 336A)		1
-346A	412N1156-23								.... CHASSIS (USED ON ITEM 336B)		1
-346B	412N1156-24								.... CHASSIS (USED ON ITEM 336C)		1
348	BACS12ER08K14								.. SCREW		4
351	AN960PD8								DELETED		
351A	AN960JD8								.. WASHER		4
354	H10-08BAC								DELETED		
354A	MS21042L08								.. NUT		4
357	HL10VAZ6-2								.. BOLT (V56878) (SPEC BACB30MY6K2) (OPT B30MY6K2 (V97928)) (OPT HL10VAZ6-2 (V73197)) (OPT HL10VAZ6-2 (V92215)) (OPT HL10VAZ6-2 (V97928)) (OPT L8006K2 (V06725))		4
360	H10-3BAC								DELETED		
360A	MS21042L3								.. NUT		4
363	412N1117-1								.. FITTING		1
366	412N1117-2								.. FITTING		1
369	412N1153-101								.. LATCH ASSY	A-W, GA	1
369A	412N1153-157								.. LATCH ASSY	X-FA	1

-Item not Illustrated

# 25-28-35

ILLUSTRATED PARTS LIST

Page 1056

Mar 01/2006





COMPONENT MAINTENANCE MANUAL

FIG/ ITEM	PART NUMBER	AIRLINE PART NUMBER	NOMENCLATURE							USAGE CODE	UNITS PER ASSY
			1	2	3	4	5	6	7		
1-			ATTACHING PARTS								
372	BACS12ER08K6		. . SCREW (V06710) (SPEC BACS12ER08K6) (OPT BACS12ER3K6 (V06725)) (OPT BACS12ER3K6 (V06950)) (OPT BACS12ER3K6 (V27624)) (OPT BACS12ER3K6 (V34252)) (OPT BACS12ER3K6 (V56878)) (OPT BACS12ER3K6 (V73197)) (OPT BACS12ER3K6 (V80539)) (OPT BACS12ER3K6 (V92215)) (OPT BACS12ER3K6 (V93907)) (OPT BACS12ER3K6 (V97928))								2
375	BACS12ER06K8		. . SCREW (V06710) (SPEC BACS12ER06K8) (OPT BACS12ER06K8 (V06725)) (OPT BACS12ER06K8 (V06950)) (OPT BACS12ER06K8 (V27624)) (OPT BACS12ER06K8 (V34252)) (OPT BACS12ER06K8 (V56878)) (OPT BACS12ER06K8 (V73197)) (OPT BACS12ER06K8 (V80539)) (OPT BACS12ER06K8 (V92215)) (OPT BACS12ER06K8 (V93907)) (OPT BACS12ER06K8 (V97928))								4
378	SL210-06-2		. . INSERT (V97393)								4
381	NAS514P832-5		. . SCREW								4
384	SL210-08-1		. . INSERT (V97393)								4
			-----*								
387	412N1113-7		. . . COVER							A-W, GA	1
387A	412N1113-11		. . . COVER (USED ON ITEM 369A)							X-FA	1
390	412N1113-8		. . . COVER							A-W, GA	1
390A	412N1113-12		. . . COVER (USED ON ITEM 369A)							X-FA	1
393	H3-1145-1-5760		. . . LATCH ASSY (V34941) (SPEC S412N101-1060)								1

-Item not Illustrated

**25-28-35**

ILLUSTRATED PARTS LIST

Page 1057

Mar 01/2006



COMPONENT MAINTENANCE MANUAL

FIG/ ITEM	PART NUMBER	AIRLINE PART NUMBER	NOMENCLATURE							USAGE CODE	UNITS PER ASSY
			1	2	3	4	5	6	7		
1- 396	BACS12FA3K5		. . SCREW (V06710) (SPEC BACS12FA3K5) (OPT BACS12FA3K5 (V06725)) (OPT BACS12FA3K5 (V06950)) (OPT BACS12FA3K5 (V27624)) (OPT BACS12FA3K5 (V34252)) (OPT BACS12FA3K5 (V56878)) (OPT BACS12FA3K5 (V73197)) (OPT BACS12FA3K5 (V80539)) (OPT BACS12FA3K5 (V92215)) (OPT BACS12FA3K5 (V93907)) (OPT BACS12FA3K5 (V97928))								8
399	BACS12FA3K5		. . SCREW (V06710) (SPEC BACS12FA3K5) (OPT BACS12FA3K5 (V06725)) (OPT BACS12FA3K5 (V06950)) (OPT BACS12FA3K5 (V27624)) (OPT BACS12FA3K5 (V34252)) (OPT BACS12FA3K5 (V56878)) (OPT BACS12FA3K5 (V73197)) (OPT BACS12FA3K5 (V80539)) (OPT BACS12FA3K5 (V92215)) (OPT BACS12FA3K5 (V93907)) (OPT BACS12FA3K5 (V97928))								30
402	412N1145-27		. . BRACKET								1
405	412N1145-28		. . BRACKET								1
408	412N1147-1		. . SUPPORT-PASS SVCE UNIT								1
411	BACS12ER08K12		. . SCREW (V06710) (SPEC BACS12ER08K12) (OPT BACS12ER08K12 (V06725)) (OPT BACS12ER08K12 (V06950)) (OPT BACS12ER08K12 (V27624)) (OPT BACS12ER08K12 (V34252)) (OPT BACS12ER08K12 (V56878)) (OPT BACS12ER08K12 (V73197)) (OPT BACS12ER08K12 (V80539)) (OPT BACS12ER08K12 (V92215)) (OPT BACS12ER08K12 (V93907)) (OPT BACS12ER08K12 (V97928))								11
414	AN960PD8		DELETED								
414A	AN960JD8		. . WASHER								11

-Item not Illustrated

**25-28-35**

ILLUSTRATED PARTS LIST

Page 1058

Mar 01/2006



## COMPONENT MAINTENANCE MANUAL

FIG/ ITEM	PART NUMBER	AIRLINE PART NUMBER	NOMENCLATURE							USAGE CODE	UNITS PER ASSY
			1	2	3	4	5	6	7		
1-											
417	H10-08BAC										
417A	MS21042L08										11
420	412N1146-1										1
423	BACR15DR3										4
426	BR1000AD8										2
429	412N1146-41										1
432	65C27011-2									A, E, J	1
-434	65C27011-10									B, F	1
-435	65C27011-12									C, D, G, H	1
-436	65C27011-20									K, V	1
-437	65C27011-22									L	1
-438	65C27011-24									M	1
-440	65C27011-26									N-Q	1
-442	65C27011-32									R	1
-444	65C27011-33									S	1
-446	65C27011-37									T	1
-448	65C27011-39									U	1
-448A	65C27011-49									W	1
448B	65C27011-54									X, Y	1
448C	65C27011-59									Z	1
448D	65C27011-61									BA	1
448E	65C27011-63									CA	1
448F	65C27011-65									DA-FA	1
448G	65C27011-69									GA	1
450	65C27011-1004										1
453	NAS1836-3-11										14

-Item not Illustrated

# 25-28-35

ILLUSTRATED PARTS LIST

Page 1059

Mar 01/2006



## COMPONENT MAINTENANCE MANUAL

FIG/ ITEM	PART NUMBER	AIRLINE PART NUMBER	NOMENCLATURE							USAGE CODE	UNITS PER ASSY	
			1	2	3	4	5	6	7			
1-												
458	65C27011-1201										. . . INSERT PATTERN A, B, J, K, N, V, X, Y	1
461	NAS1836-3-11										. . . . INSERT	4
464	SL2334-3A2										. . . . INSERT	7
467	SL2334-3A2										DELETED	
470	65C27011-1202										. . . INSERT PATTERN A, J, N, V, X,Y	1
473	NAS1836-3-11										. . . . INSERT	4
476	SL2334-3A2										. . . . INSERT	7
479	65C27011-1203										. . . INSERT PATTERN C, F, H, K-Q, S- W, Z-GA	1
482	NAS1836-3-11										. . . . INSERT	4
485	SL2334-3A2										. . . . INSERT	4
488	65C27011-1204										. . . INSERT PATTERN B, C, D, F-H, K-Q, S-W, Z, BA, DA- GA	1
491	NAS1836-3-11										. . . . INSERT	4
494	SL2334-3A2										. . . . INSERT	4
497	65C27011-1258										. . . INSERT PATTERN B, K	1
500	NAS1836-3-11										. . . . INSERT	4
503	NAS1836-4-11										. . . . INSERT	1
506	65C27011-1260										. . . INSERT PATTERN C, D, L, M	1
509	NAS1836-3-11										. . . . INSERT	8
512	NAS1836-4-11										. . . . INSERT	2
515	65C27011-1264										. . . INSERT PATTERN P, W, Z	1
518	NAS1836-3-11										. . . . INSERT	8
520	NAS1836-4-11										. . . . INSERT	2
521	65C27011-1266										. . . INSERT PATTERN L, U, BA, GA	1
522	NAS1836-3-11										. . . . INSERT	8

-Item not Illustrated

**25-28-35**

ILLUSTRATED PARTS LIST

Page 1060

Mar 01/2006



## COMPONENT MAINTENANCE MANUAL

FIG/ ITEM	PART NUMBER	AIRLINE PART NUMBER	NOMENCLATURE							USAGE CODE	UNITS PER ASSY	
			1	2	3	4	5	6	7			
1-												
523	NAS1836-4-11											2
524	65C27011-1268									E, R, CA		1
527	NAS1836-3-11											8
530	NAS1836-4-11											2
533	65C27011-1270									N, P, Q, T, W, DA, FA		1
536	NAS1836-3-11											8
539	NAS1836-4-11											2
542	65C27011-1302									A, E, J, K, L, R, S, U, V, Z, GA		1
545	NAS1836-3-11											8
548	65C27011-1310									B, F		1
551	NAS1836-3-11											8
554	65C27011-1312									C, D, G, H		1
557	NAS1836-3-11											8
560	65C27011-1318									M		1
563	NAS1836-3-11											8
566	65C27011-1320									N, P, Q, T, W		1
569	NAS1836-3-11											8
578	65C27011-2001											1
581	SL2334-3A2											4
584	65C27011-2101											1
587	NAS1836-3-11											4
590	65C27011-2201											1
593	NAS1836-3-11											4
596	65C27011-4001									L, R, S, W		1
599	NAS1833-3-400											6
-600	65C27011-4008									GA		1

-Item not Illustrated

**25-28-35**

ILLUSTRATED PARTS LIST

Page 1061

Mar 01/2006

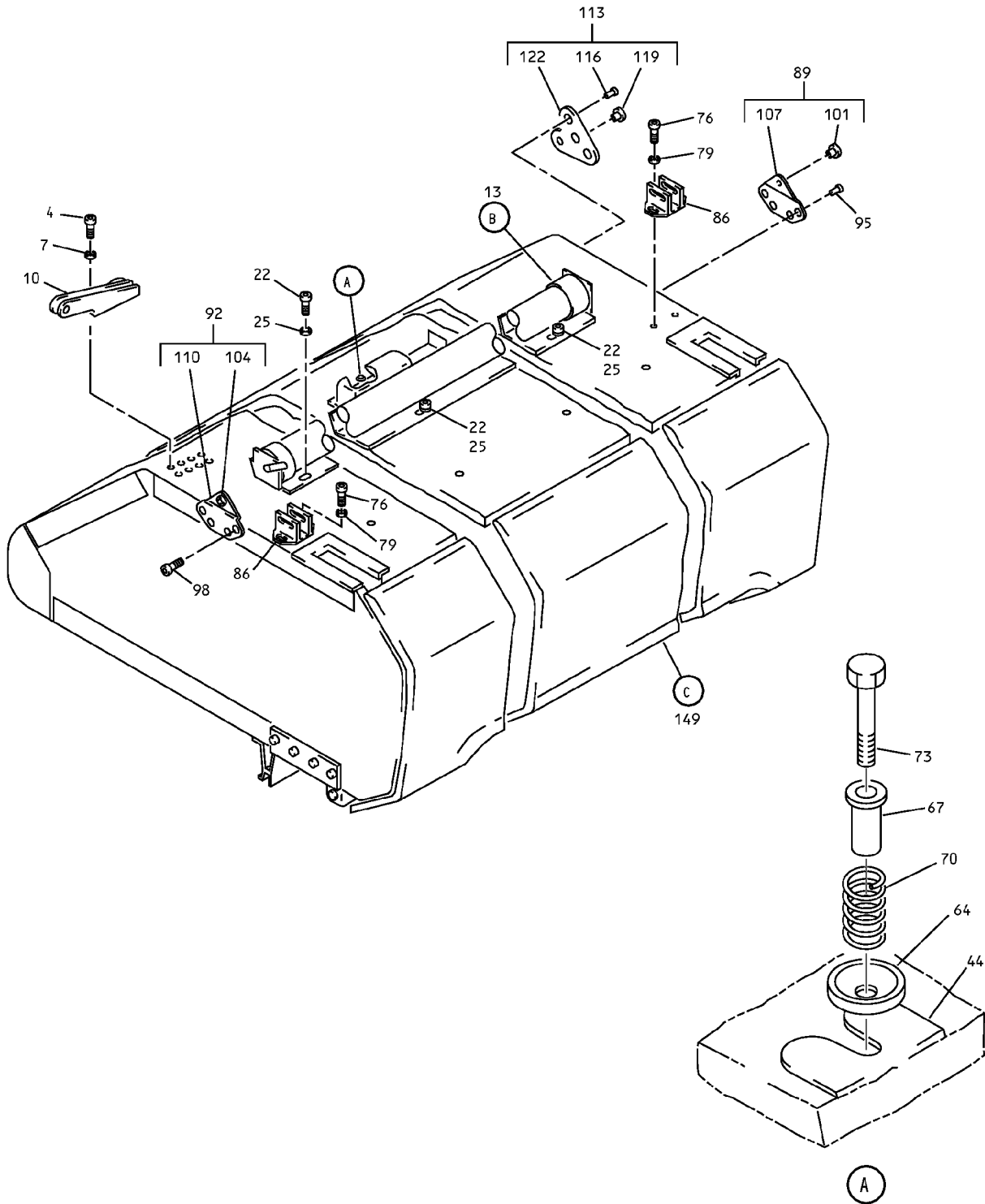


## COMPONENT MAINTENANCE MANUAL

FIG/ ITEM	PART NUMBER	AIRLINE PART NUMBER	NOMENCLATURE							USAGE CODE	UNITS PER ASSY
			1	2	3	4	5	6	7		
1-											
-601	NAS1833-3-400										3
602	65C27011-4101									L, R, S	1
605	NAS1833-3-400										10
610	65C27011-5001									T	1
615	NAS1836-3-11										4
645	412N1112-34									A-W, GA	1
-645A	412N1112-45									X-FA	1

-Item not Illustrated

COMPONENT MAINTENANCE MANUAL



Overhead Stowage Compartment Assembly  
IPL Figure 2 (Sheet 1 of 10)

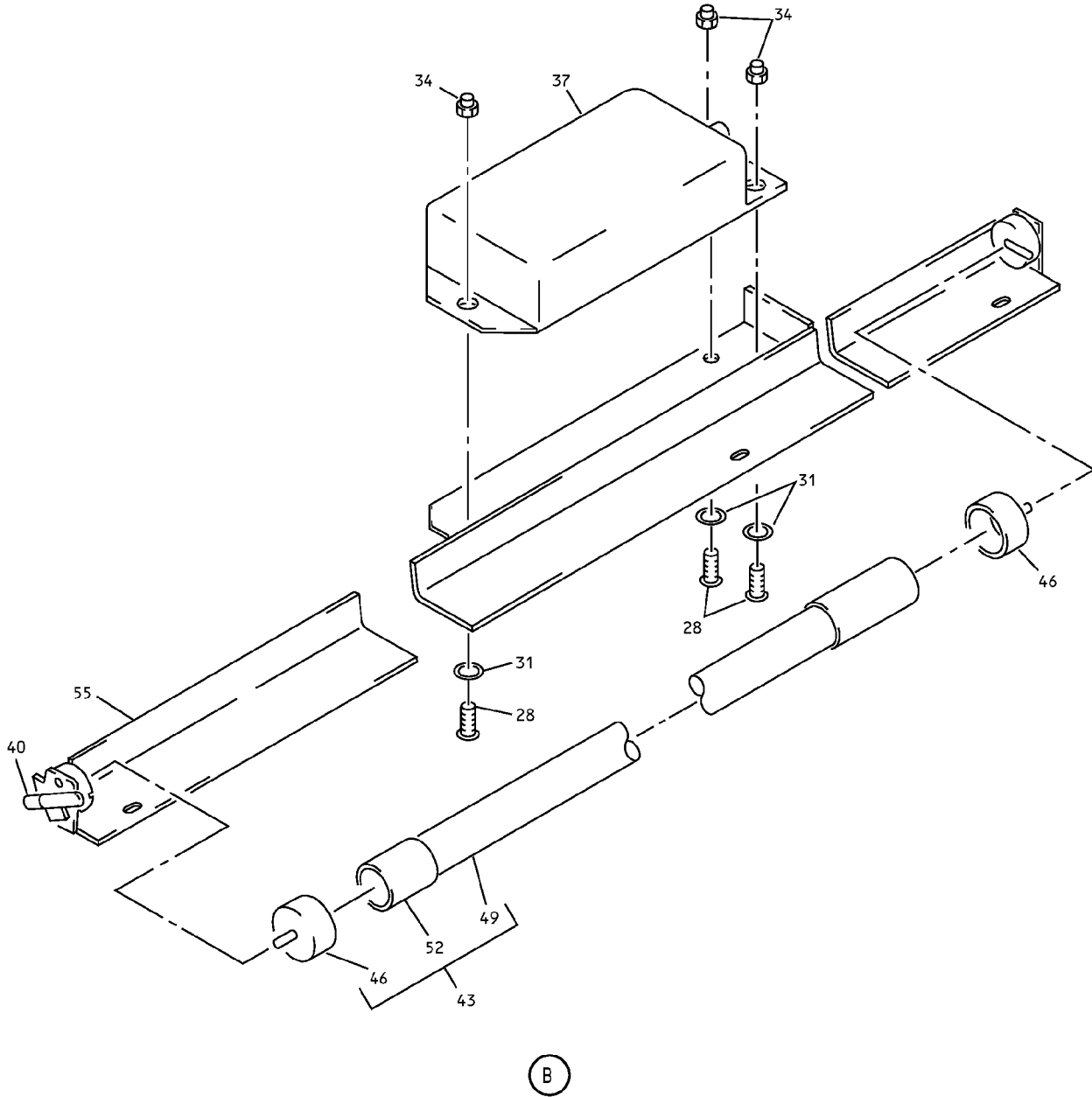
**25-28-35**

ILLUSTRATED PARTS LIST

Page 1063

Mar 01/2006

COMPONENT MAINTENANCE MANUAL



Overhead Stowage Compartment Assembly  
IPL Figure 2 (Sheet 2 of 10)

**25-28-35**

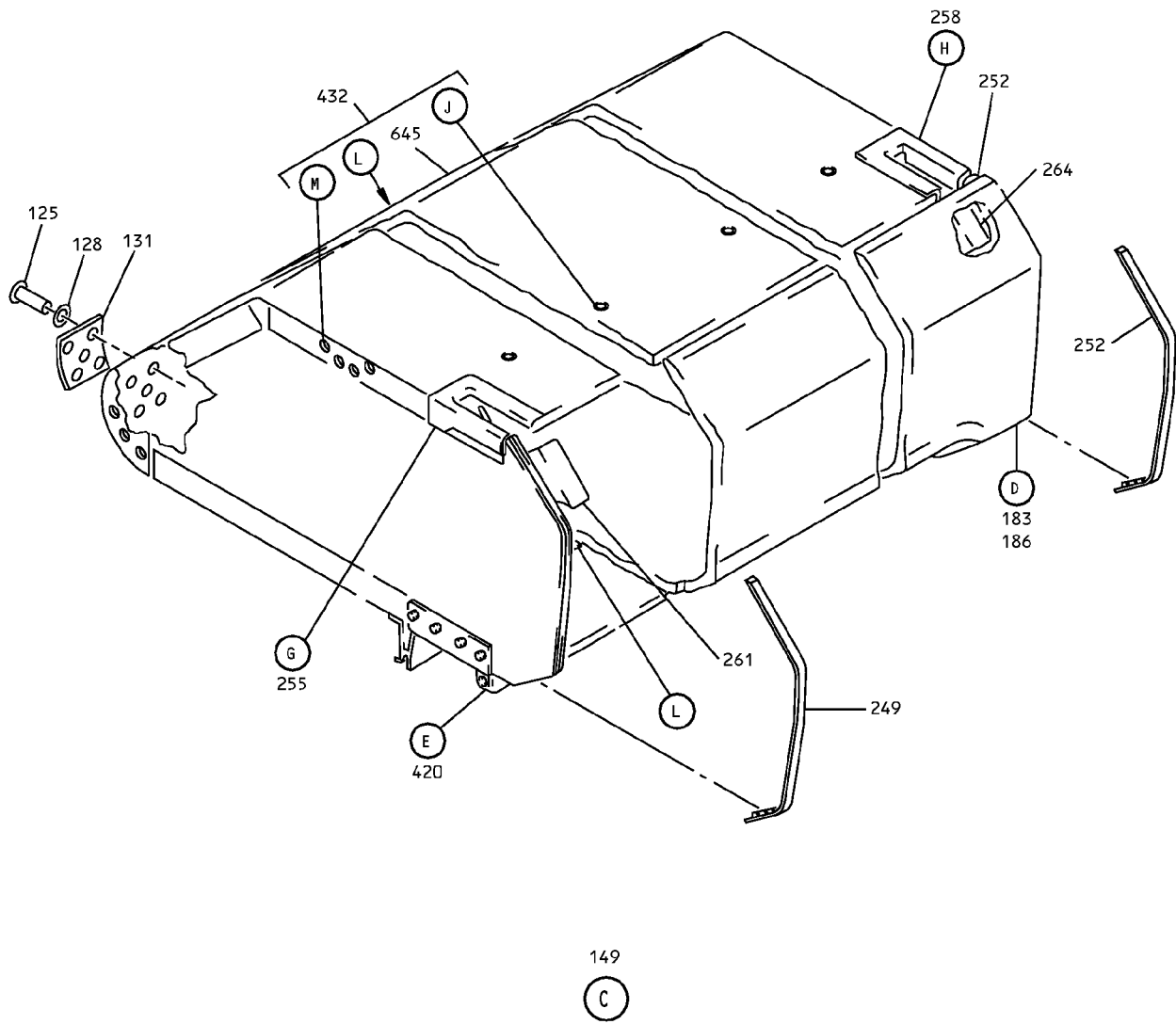
ILLUSTRATED PARTS LIST

Page 1064

Mar 01/2006



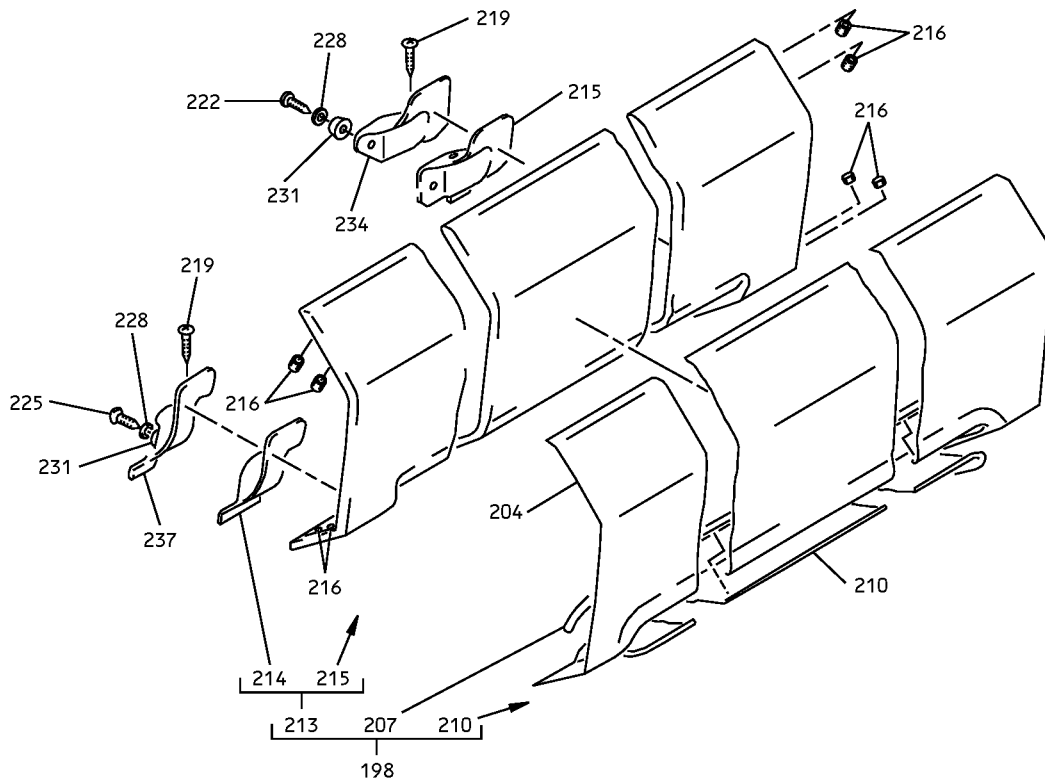
# COMPONENT MAINTENANCE MANUAL



Overhead Stowage Compartment Assembly  
IPL Figure 2 (Sheet 3 of 10)

**25-28-35**  
ILLUSTRATED PARTS LIST  
Page 1065  
Mar 01/2006

# COMPONENT MAINTENANCE MANUAL



183

(D)

Overhead Stowage Compartment Assembly  
IPL Figure 2 (Sheet 4 of 10)

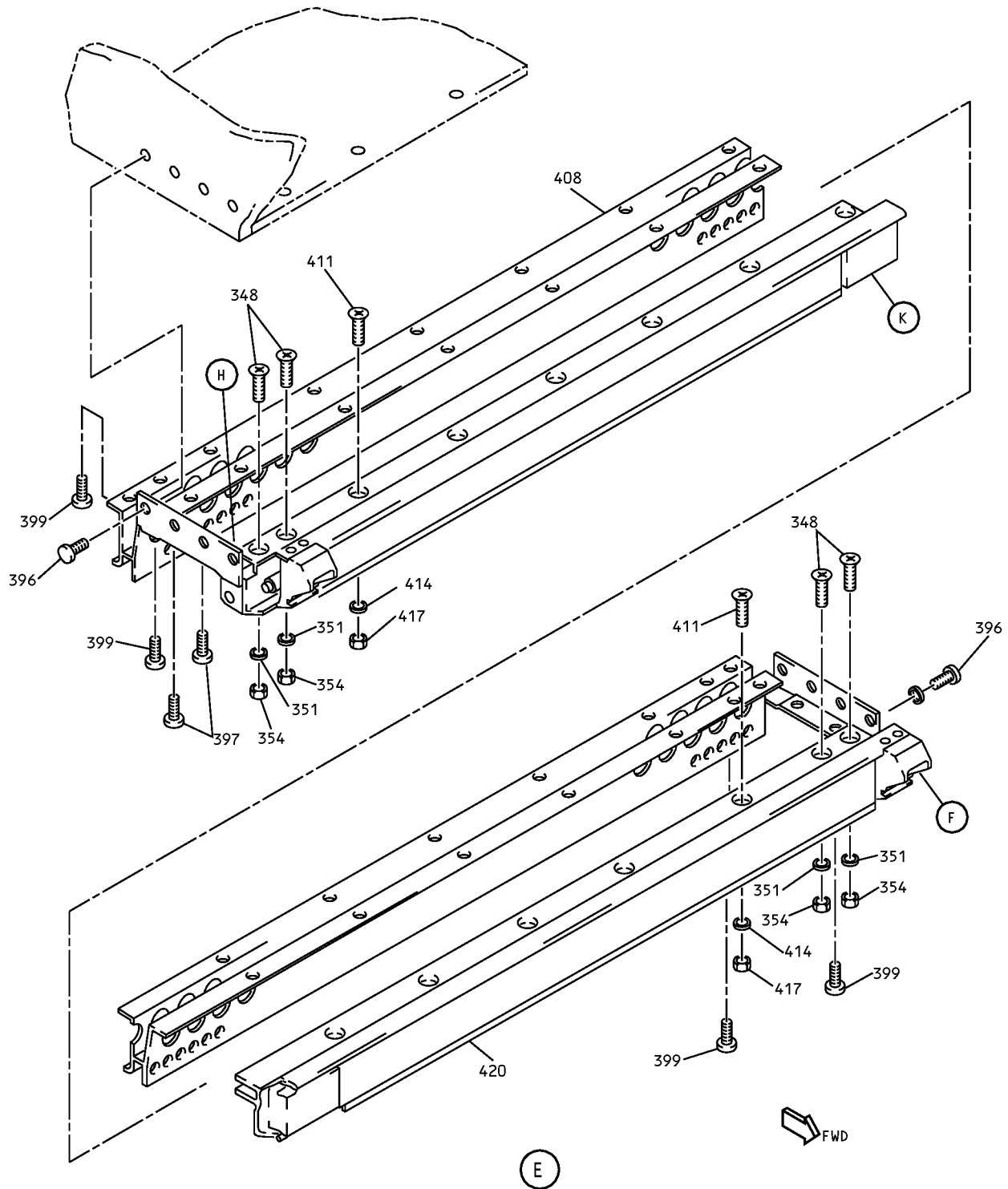
## 25-28-35

ILLUSTRATED PARTS LIST

Page 1066

Mar 01/2006

COMPONENT MAINTENANCE MANUAL



Overhead Storage Compartment Assembly  
IPL Figure 2 (Sheet 5 of 10)

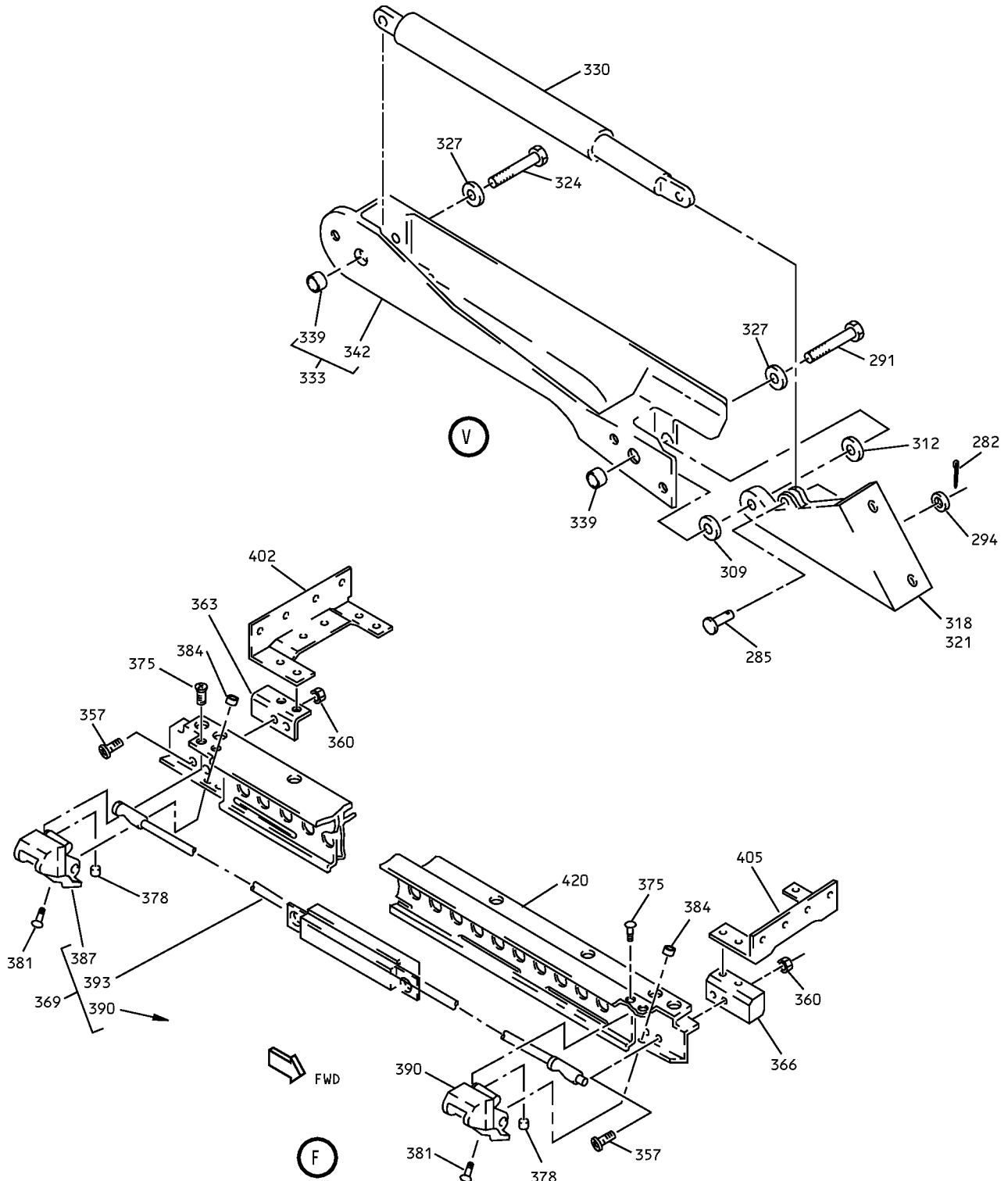
**25-28-35**

ILLUSTRATED PARTS LIST

Page 1067

Mar 01/2006

COMPONENT MAINTENANCE MANUAL



Overhead Storage Compartment Assembly  
IPL Figure 2 (Sheet 6 of 10)

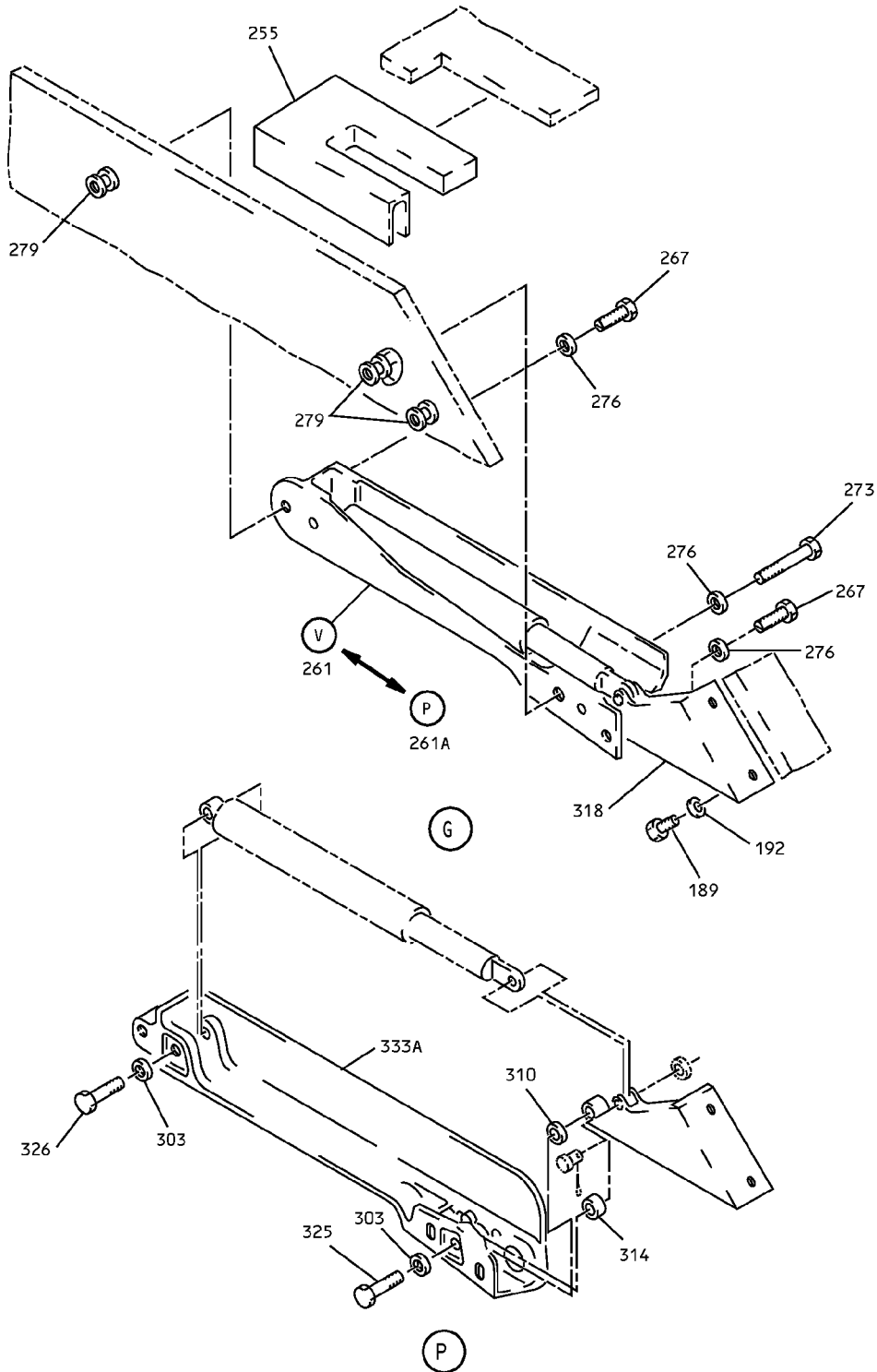
**25-28-35**

ILLUSTRATED PARTS LIST

Page 1068

Mar 01/2006

# COMPONENT MAINTENANCE MANUAL



Overhead Storage Compartment Assembly  
IPL Figure 2 (Sheet 7 of 10)

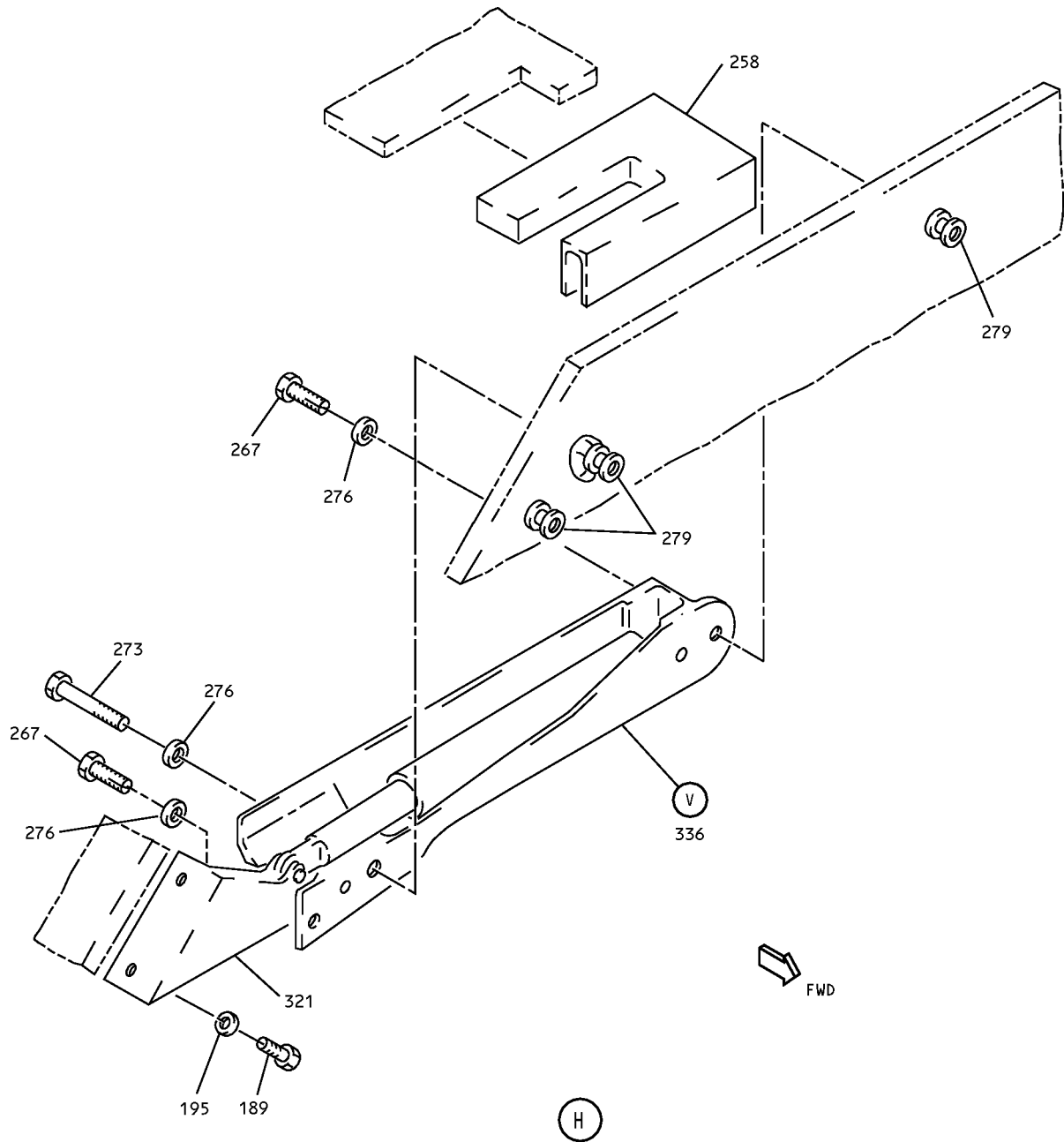
## 25-28-35

ILLUSTRATED PARTS LIST

Page 1069

Mar 01/2006

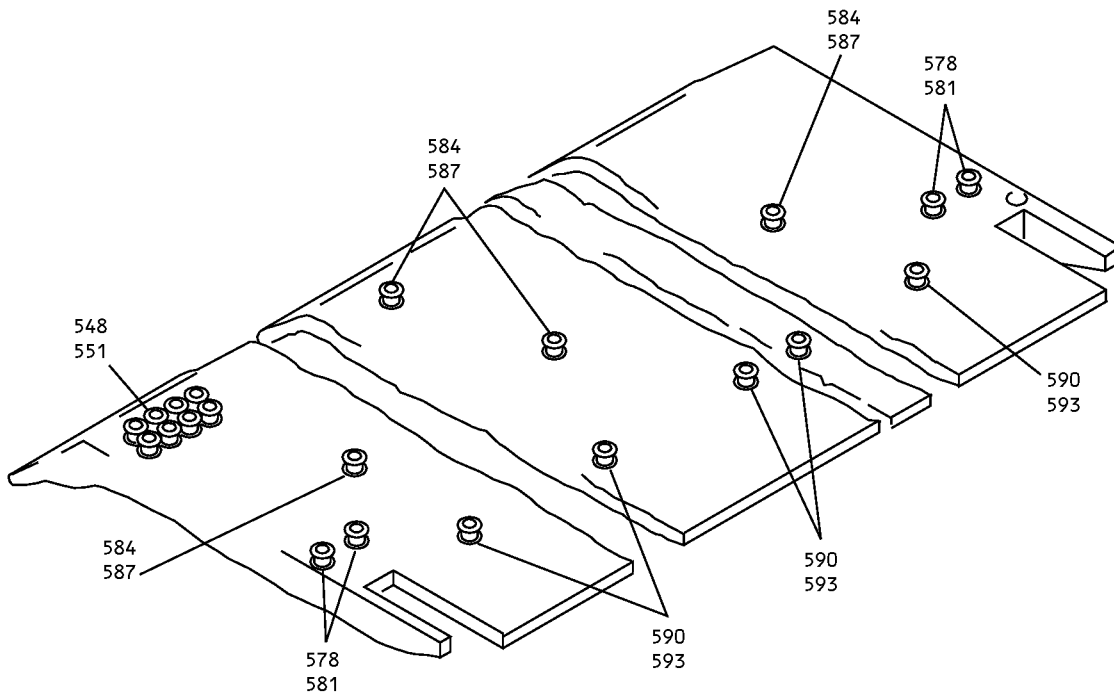
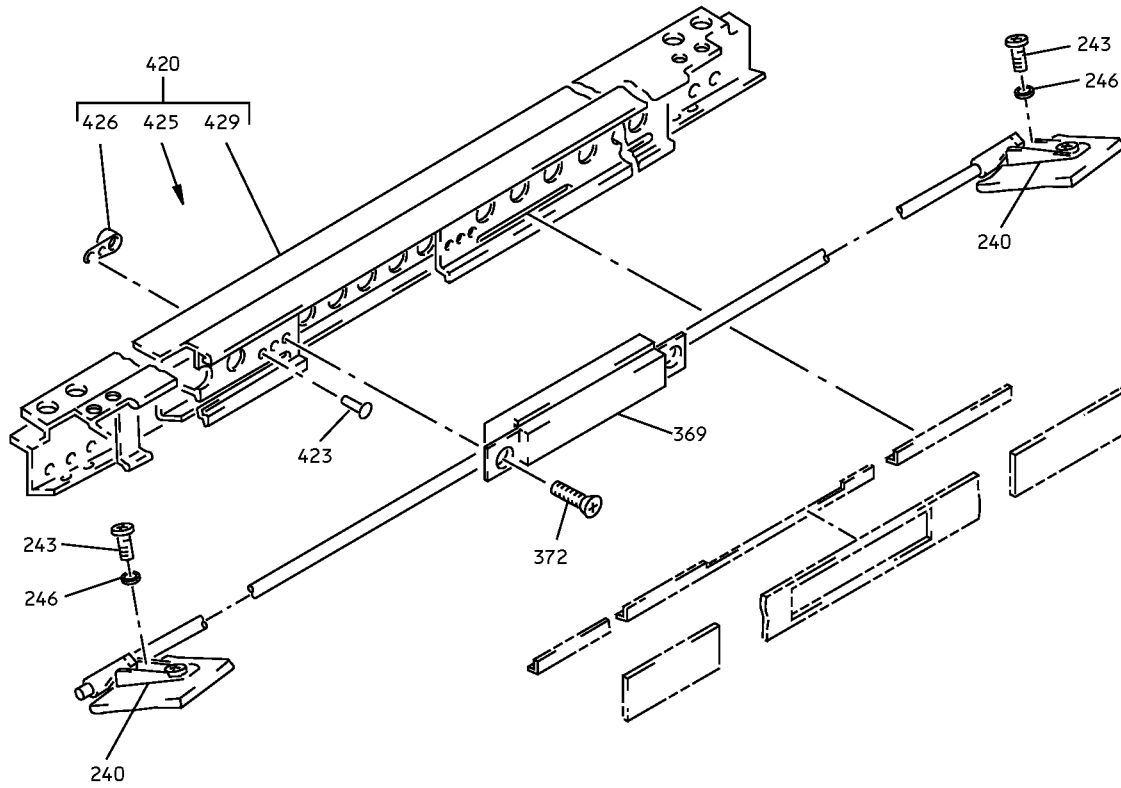
COMPONENT MAINTENANCE MANUAL



Overhead Stowage Compartment Assembly  
IPL Figure 2 (Sheet 8 of 10)

**25-28-35**  
ILLUSTRATED PARTS LIST  
Page 1070  
Mar 01/2006

# COMPONENT MAINTENANCE MANUAL



Overhead Stowage Compartment Assembly  
IPL Figure 2 (Sheet 9 of 10)

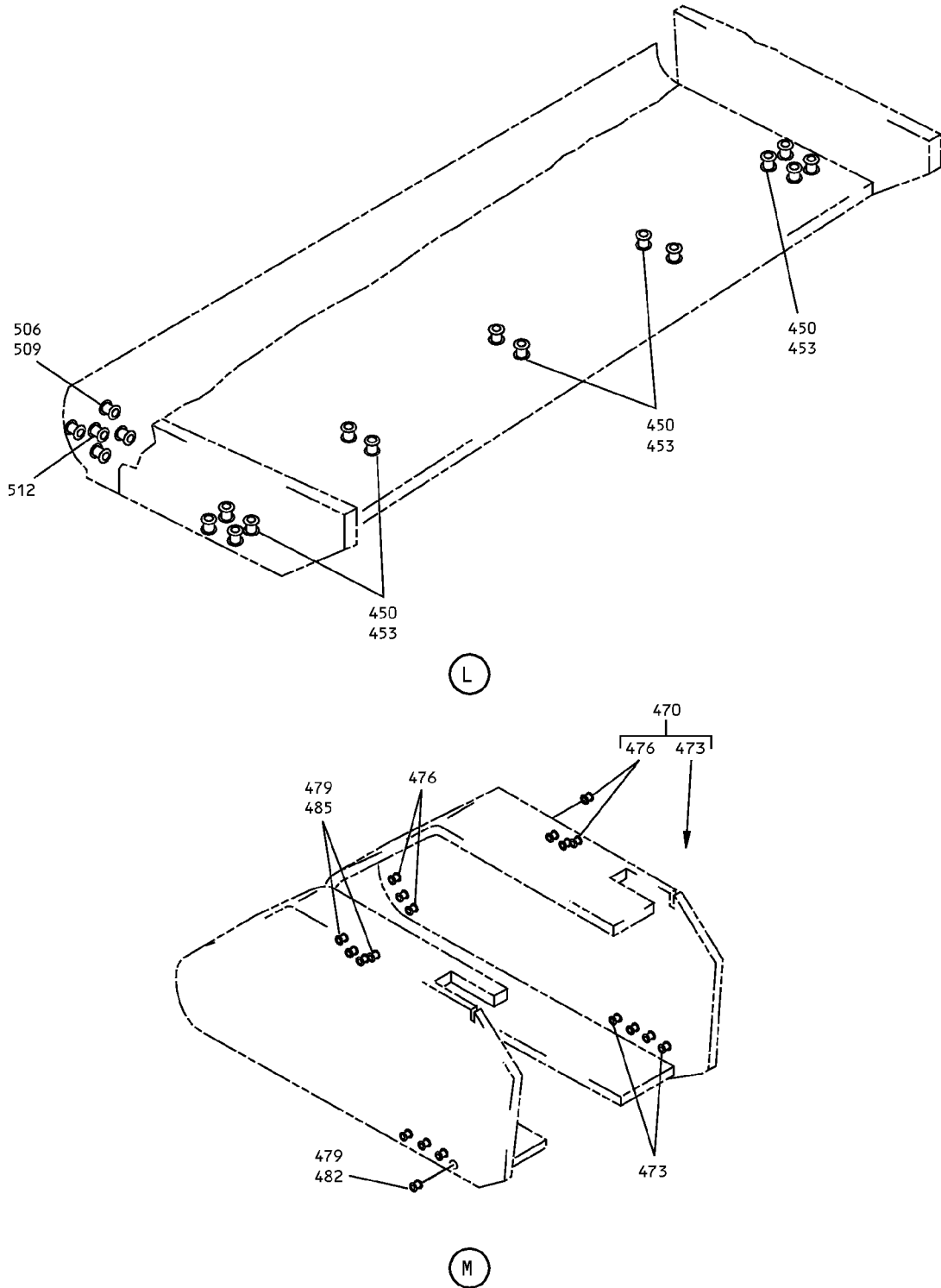
## 25-28-35

ILLUSTRATED PARTS LIST

Page 1071

Mar 01/2006

# COMPONENT MAINTENANCE MANUAL



Overhead Stowage Compartment Assembly  
IPL Figure 2 (Sheet 10 of 10)







COMPONENT MAINTENANCE MANUAL

FIG/ ITEM	PART NUMBER	AIRLINE PART NUMBER	NOMENCLATURE							USAGE CODE	UNITS PER ASSY
			1	2	3	4	5	6	7		
2-											
28	BACS12ER3K6		.	SCREW							3
				(V06710)							
				(SPEC BACS12ER3K6)							
				(OPT BACS12ER3K6 (V06725))							
				(OPT BACS12ER3K6 (V06950))							
				(OPT BACS12ER3K6 (V27624))							
				(OPT BACS12ER3K6 (V34252))							
				(OPT BACS12ER3K6 (V56878))							
				(OPT BACS12ER3K6 (V73197))							
				(OPT BACS12ER3K6 (V80539))							
				(OPT BACS12ER3K6 (V92215))							
				(OPT BACS12ER3K6 (V93907))							
				(OPT BACS12ER3K6 (V97928))							
31	BACW10UD10		.	WASHER							3
34	F22K1-02		.	NUT							3
				(V72962)							
				(SPEC BACN10R10L)							
				(OPT 22K1-02 (V72962))							
				(OPT 26CL-02 (V80539))							
				----- * -----							
37	05939-3		..	BALLAST							1
				(V17023)							
				(SPEC S283N702-3)							
40	1864		..	BULB-NIGHT LIGHT							1
				(V08805)							
43	417N5120-10		..	LAMP ASSY							1
44	65C28117-3		..	PAD							1
46	2055150		...	CAP-END							2
				(V04169)							
49	F40WW		...	LAMP-FLUOR							1
				(V08805)							
52	LP1625-48		...	TUBE-COVER							1
				(V60116)							
55	800000255-11		..	LIGHT ASSY-CLG							1
				(V05617)							
				(SPEC S417N507-11)							
64	411N3142-28		.	WASHER-CUPPED							1
67	BACS18C8-6		.	SPACER							1
70	MS24585-1230		.	SPRING							1
73	NAS1801-3-11		.	SCREW							1

-Item not Illustrated

**25-28-35**

ILLUSTRATED PARTS LIST

Page 1074

Mar 01/2006



## COMPONENT MAINTENANCE MANUAL

FIG/ ITEM	PART NUMBER	AIRLINE PART NUMBER	NOMENCLATURE							USAGE CODE	UNITS PER ASSY
			1	2	3	4	5	6	7		
2- 76	BACB30NM3K1		.	BOLT							4
				(V06710)							
				(SPEC BACB30NM3K1)							
				(OPT BACB30NM3K1 (V06725))							
				(OPT BACB30NM3K1 (V06950))							
				(OPT BACB30NM3K1 (V08524))							
				(OPT BACB30NM3K1 (V27624))							
				(OPT BACB30NM3K1 (V56878))							
				(OPT BACB30NM3K1 (V73197))							
				(OPT BACB30NM3K1 (V80539))							
				(OPT BACB30NM3K1 (V92215))							
				(OPT BACB30NM3K1 (V93907))							
				(OPT BACB30NM3K1 (V97928))							
79	AN960PD10			DELETED							
79A	AN960JD10		.	WASHER							4
86	411N3134-1		.	BRACKET ASSY-SLIDE							2
89	412N1119-1		.	FITTING ASSY							1
92	412N1119-1		.	FITTING ASSY							1
				ATTACHING PARTS							
95	BACS12ER3K6		.	SCREW							4
				(V06710)							
				(SPEC BACS12ER3K6)							
				(OPT BACS12ER3K6 (V06725))							
				(OPT BACS12ER3K6 (V06950))							
				(OPT BACS12ER3K6 (V27624))							
				(OPT BACS12ER3K6 (V34252))							
				(OPT BACS12ER3K6 (V56878))							
				(OPT BACS12ER3K6 (V73197))							
				(OPT BACS12ER3K6 (V80539))							
				(OPT BACS12ER3K6 (V92215))							
				(OPT BACS12ER3K6 (V93907))							
				(OPT BACS12ER3K6 (V97928))							

-Item not Illustrated

# 25-28-35

ILLUSTRATED PARTS LIST

Page 1075

Mar 01/2006





COMPONENT MAINTENANCE MANUAL

FIG/ ITEM	PART NUMBER	AIRLINE PART NUMBER	NOMENCLATURE							USAGE CODE	UNITS PER ASSY
			1	2	3	4	5	6	7		
2-											
125	BACB30NM3K1		.	BOLT							4
				(V06710)							
				(SPEC BACB30NM3K1)							
				(OPT BACB30NM3K1 (V06725))							
				(OPT BACB30NM3K1 (V06950))							
				(OPT BACB30NM3K1 (V08524))							
				(OPT BACB30NM3K1 (V27624))							
				(OPT BACB30NM3K1 (V56878))							
				(OPT BACB30NM3K1 (V73197))							
				(OPT BACB30NM3K1 (V80539))							
				(OPT BACB30NM3K1 (V92215))							
				(OPT BACB30NM3K1 (V93907))							
				(OPT BACB30NM3K1 (V97928))							
128	AN960PD10			DELETED							
128A	AN960JD10		.	WASHER							4
131	412N1119-12		.	FITTING							1
149	65C27008-3SP		.	MODULE ASSY					A		1
-152	65C27008-43SP		.	MODULE ASSY					B		1
183	412N1140-1SP		..	DOOR ASSY-60-IN.					A		1
186	412N1140-41SP		..	DOOR ASSY-60-IN.					B		1
				ATTACHING PARTS							
189	NAS1801-3-4		..	SCREW							4
192	MS35333-39		..	WASHER							4
				-----*							
198	412N1140-18SP		...	PANEL ASSY					A		1
201	412N1140-58SP		...	PANEL ASSY					B		1
204	412N1141-1SP		....	FACEPLATE							1
207	412N1140-13		....	STRIP-RTNR							1
210	412N1141-7SP		....	MARKER							1
213	412N1142-15		....	PANEL ASSY							1
214	412N1142-11		.....	GUSSET							1
215	412N1142-12		.....	GUSSET							1
216	SL618-3A		...	INSERT (V97393)							1
219	MS51862-4		...	SCREW							2
222	MS51861-15		...	SCREW					A		2

-Item not Illustrated

**25-28-35**

ILLUSTRATED PARTS LIST

Page 1077

Mar 01/2006



## COMPONENT MAINTENANCE MANUAL

FIG/ ITEM	PART NUMBER	AIRLINE PART NUMBER	NOMENCLATURE							USAGE CODE	UNITS PER ASSY
			1	2	3	4	5	6	7		
2-											
225	BACS12H4-8		. . .							B	2
228	NAS620ABL		. . .								2
231	412N1245-1		. . .								2
234	412N1142-13SP		. . .								1
237	412N1143-14SP		. . .								1
240	H3-1152-1		. .								2
243	BACS12FA3K4		. .								4
246	MS35333-39		. .								4
249	412N1118-1SP		. .								1
252	412N1118-2SP		. .								1
255	412N1154-2		. .								1
258	412N1154-1		. .								1
261	412N1155-1		. .							B	1
-261A	412N1155-7		. .							B	1
-261B	412N1155-1		. .							A	1
264	412N1155-2		. .							B	1
-264A	412N1155-8		. .							B	1
-264B	412N1155-2		. .							A	1
267	412N1227-1		. .								4
270	A1C1321-3-8		. .								4
273	BACB30LK3-18		. .								6
-273A	NAS1801-3-10		. .								2

-Item not Illustrated

# 25-28-35

ILLUSTRATED PARTS LIST

Page 1078

Mar 01/2006



COMPONENT MAINTENANCE MANUAL

FIG/ ITEM	PART NUMBER	AIRLINE PART NUMBER	NOMENCLATURE							USAGE CODE	UNITS PER ASSY
			1	2	3	4	5	6	7		
2-											
276	BACW10F136AL								. . WASHER (V10630) (SPEC BACW10P136AL)		2
279	NAS1833-3-400								. . INSERT  -----*		6
282	MS24665-132								. . . PIN-COTTER		1
285	MS20392-2C13								. . . PIN-DRILLED SHANK		1
291	NAS6703PU11								. . . BOLT (USED ON ITEMS 261,261B,264,264B)		1
294	AN960PD10L								. . . WASHER (USED ON ITEMS 261,261B,264,264B)		1
303	AN960PD10L								DELETED		
303A	AN960JD10L								. . . WASHER (USED ON ITEMS 261A,264A)		1
309	NAS43DD3-5								. . . SPACER (USED ON ITEMS 261,261B,264,264B)		1
310	NAS43DD3-3								. . . SPACER (USED ON ITEMS 261A,264A)		1
312	NAS43DD3-6								. . . SPACER (USED ON ITEMS 261,261B,264,264A)		1
314	NAS43DD3-8								. . . SPACER (USED ON ITEMS 261A,264A)		1
318	H2948-2								. . . HINGE (V83014) (SPEC S412N102-2) (USED ON ITEMS 261,261A,261B)		1
321	H2948-1								. . . HINGE (V83014) (SPEC S412N102-1) (USED ON ITEMS 264,264A,264B)		1
324	NAS6703PU15								. . . BOLT		1
325	BACB30NM3K8								. . . BOLT (USED ON ITEMS 261A,264A)		1
326	BACB30NM3K12								. . . BOLT (USED ON ITEMS 261A,264A)		1

-Item not Illustrated

**25-28-35**

ILLUSTRATED PARTS LIST

Page 1079

Mar 01/2006



## COMPONENT MAINTENANCE MANUAL

FIG/ ITEM	PART NUMBER	AIRLINE PART NUMBER	NOMENCLATURE							USAGE CODE	UNITS PER ASSY
			1	2	3	4	5	6	7		
2-											
327	AN960PD10L		. . .	WASHER							1
				(USED ON ITEMS							
				261,261B,264,264B)							
330	SB113		. . .	ACTUATOR							1
				(V24984)							
				(SPEC S412N104-1)							
333	412N1156-1		. . .	CHASSIS ASSY							1
				(USED ON ITEMS 261,261B)							
333A	412N1156-13		. . .	CHASSIS ASSY							1
				(USED ON ITEM 261A)							
336	412N1156-2		. . .	CHASSIS ASSY							1
				(USED ON ITEM 264,264B)							
-336A	412N1156-14		. . .	CHASSIS ASSY							1
				(USED ON ITEM 264A)							
339	6041-3BRX225		. . . .	INSERT-DODGE							2
				(V01556)							
342	412N1156-3		. . . .	CHASSIS							1
				(USED ON ITEM 333)							
-343	412N1156-15		. . . .	CHASSIS							1
				(USED ON ITEM 333A)							
345	412N1156-4		. . . .	CHASSIS							1
				(USED ON ITEM 336)							
-346	412N1156-16		. . . .	CHASSIS							1
				(USED ON ITEM 336A)							
348	BACS12ER08K14		. .	SCREW							4
351	AN960PD8		DELETED								
351A	AN960JD8		. .	WASHER							4
354	H10-08BAC		DELETED								
354A	MS21042L08		. .	NUT							4
357	HL10VAZ6-2		. .	BOLT							4
				(V56878)							
				(SPEC BACB30MY6K2)							
				(OPT B30MY6K2 (V97928))							
				(OPT HL10VAZ6-2 (V73197))							
				(OPT HL10VAZ6-2 (V92215))							
				(OPT HL10VAZ6-2 (V97928))							
				(OPT L8006K2 (V06725))							
360	H10-3BAC		DELETED								

-Item not Illustrated

**25-28-35**

ILLUSTRATED PARTS LIST

Page 1080

Mar 01/2006





COMPONENT MAINTENANCE MANUAL

FIG/ ITEM	PART NUMBER	AIRLINE PART NUMBER	NOMENCLATURE							USAGE CODE	UNITS PER ASSY		
			1	2	3	4	5	6	7				
2-													
360A	MS21042L3											.. NUT	4
363	412N1117-1											.. FITTING	1
366	412N1117-2											.. FITTING	1
369	412N1153-101											.. LATCH ASSY	2
												ATTACHING PARTS	
372	BACS12ER08K6											.. SCREW (V06710) (SPEC BACS12ER08K6) (OPT BACS12ER08K6 (V06725)) (OPT BACS12ER08K6 (V06950)) (OPT BACS12ER08K6 (V27624)) (OPT BACS12ER08K6 (V34252)) (OPT BACS12ER08K6 (V56878)) (OPT BACS12ER08K6 (V73197)) (OPT BACS12ER08K6 (V80539)) (OPT BACS12ER08K6 (V92215)) (OPT BACS12ER08K6 (V93907)) (OPT BACS12ER08K6 (V97928))	2
375	BACS12ER06K8											.. SCREW (V06710) (SPEC BACS12ER06K8) (OPT BACS12ER06K8 (V06725)) (OPT BACS12ER06K8 (V06950)) (OPT BACS12ER06K8 (V27624)) (OPT BACS12ER06K8 (V34252)) (OPT BACS12ER06K8 (V56878)) (OPT BACS12ER06K8 (V73197)) (OPT BACS12ER06K8 (V80539)) (OPT BACS12ER06K8 (V92215)) (OPT BACS12ER06K8 (V93907)) (OPT BACS12ER06K8 (V97928))	4
378	SL210-06-2											.. INSERT (V97393)	4
381	NAS514P832-5											.. SCREW	4
384	SL210-08-1											.. INSERT (V97393)	4
												-----*	
387	412N1113-7											... COVER	1
390	412N1113-8											... COVER	1

-Item not Illustrated

**25-28-35**

ILLUSTRATED PARTS LIST

Page 1081

Mar 01/2006



## COMPONENT MAINTENANCE MANUAL

FIG/ ITEM	PART NUMBER	AIRLINE PART NUMBER	NOMENCLATURE							USAGE CODE	UNITS PER ASSY
			1	2	3	4	5	6	7		
2- 393	H3-1145-1-5-760		.	.	.	LATCH ASSY (V34941) (SPEC S412N101-1060)					1
396	BACS12FA3K5		.	.	SCREW (V06710) (SPEC BACS12FA3K5) (OPT BACS12FA3K5 (V06725)) (OPT BACS12FA3K5 (V06950)) (OPT BACS12FA3K5 (V27624)) (OPT BACS12FA3K5 (V34252)) (OPT BACS12FA3K5 (V56878)) (OPT BACS12FA3K5 (V73197)) (OPT BACS12FA3K5 (V80539)) (OPT BACS12FA3K5 (V92215)) (OPT BACS12FA3K5 (V93907)) (OPT BACS12FA3K5 (V97928))						8
399	BACS12FA3K5		.	.	SCREW (V06710) (SPEC BACS12FA3K5) (OPT BACS12FA3K5 (V06725)) (OPT BACS12FA3K5 (V06950)) (OPT BACS12FA3K5 (V27624)) (OPT BACS12FA3K5 (V34252)) (OPT BACS12FA3K5 (V56878)) (OPT BACS12FA3K5 (V73197)) (OPT BACS12FA3K5 (V80539)) (OPT BACS12FA3K5 (V92215)) (OPT BACS12FA3K5 (V93907)) (OPT BACS12FA3K5 (V97928))						30
402	412N1145-27		.	.	BRACKET						1
405	412N1145-28		.	.	BRACKET						1
408	412N1147-1		.	.	SUPPORT-PASS SVCE UNIT						1

-Item not Illustrated

# 25-28-35

ILLUSTRATED PARTS LIST

Page 1082

Mar 01/2006



COMPONENT MAINTENANCE MANUAL

FIG/ ITEM	PART NUMBER	AIRLINE PART NUMBER	NOMENCLATURE							USAGE CODE	UNITS PER ASSY	
			1	2	3	4	5	6	7			
2-												
411	BACS12ER08K12											11
414	AN960PD8											
414A	AN960JD8											11
417	H10-08BAC											
417A	MS21042L08											11
420	412N1146-1											1
423	BACR15DR3											4
426	BR1000AD8											2
429	412N1146-41											1
432	65C27011-3											1
450	65C27011-1005											1
453	NAS1836-3-11											14
470	65C27011-1202											1
473	NAS1836-3-11											4
476	SL2334-342											7
479	65C27011-1203											1
482	NAS1836-3-11											4
485	SL2334-342											4

-Item not Illustrated

**25-28-35**

ILLUSTRATED PARTS LIST

Page 1083

Mar 01/2006



## COMPONENT MAINTENANCE MANUAL

FIG/ ITEM	PART NUMBER	AIRLINE PART NUMBER	NOMENCLATURE							USAGE CODE	UNITS PER ASSY
			1	2	3	4	5	6	7		
2-											
506	65C27011-1251										1
509	NAS1836-3-11										4
512	NAS1836-4-11										1
548	65C27011-1301										1
551	NAS1836-3-11										8
578	65C27011-2001										1
581	SL2334-3A2										4
584	65C27011-2101										1
587	NAS1836-3-11										4
590	65C27011-2201										1
593	NAS1836-3-11										4
645	412N1112-34										1

-Item not Illustrated