



# **COMPONENT MAINTENANCE MANUAL WITH ILLUSTRATED PARTS LIST**

## **GALLEY FLUORESCENT LIGHT ASSEMBLY**

### **PART NUMBER**

**65-58220-1, -2, -3, -4, -5, -6, -7**

**BOEING PROPRIETARY, CONFIDENTIAL, AND/OR TRADE SECRET**

Copyright © 1995 The Boeing Company  
Unpublished Work - All Rights Reserved

Boeing claims copyright in each page of this document only to the extent that the page contains copyrightable subject matter. Boeing also claims copyright in this document as a compilation and/or collective work.

This document includes proprietary information owned by The Boeing Company and/or one or more third parties. Treatment of the document and the information it contains is governed by contract with Boeing. For more information, contact The Boeing Company, P.O. Box 3707, Seattle, Washington 98124.

Boeing, the Boeing signature, the Boeing symbol, 707, 717, 727, 737, 747, 757, 767, 777, 787, Dreamliner, BBJ, DC-8, DC-9, DC-10, KC-10, KDC-10, MD-10, MD-11, MD-80, MD-88, MD-90, P-8A, Poseidon and the Boeing livery are all trademarks owned by The Boeing Company; and no trademark license is granted in connection with this document unless provided in writing by Boeing.

PUBLISHED BY BOEING COMMERCIAL AIRPLANES GROUP, SEATTLE, WASHINGTON, USA  
A DIVISION OF THE BOEING COMPANY  
PAGE DATE: Jul 01/2009

**33-20-20**

Page 1  
Jul 01/2009



## COMPONENT MAINTENANCE MANUAL

Revision No. 9  
Jul 01/2009

To: All holders of GALLEY FLUORESCENT LIGHT ASSEMBLY 33-20-20.

Attached is the current revision to this COMPONENT MAINTENANCE MANUAL

The COMPONENT MAINTENANCE MANUAL is furnished either as a printed manual, on microfilm, or digital products, or any combination of the three. This revision replaces all previous microfilm cartridges or digital products. All microfilm and digital products are reissued with all obsolete data deleted and all updated pages added.

For printed manuals, changes are indicated on the List of Effective Pages (LEP). The pages which are revised will be identified on the LEP by an R (Revised), A (Added), O (Overflow, i.e. changes to the document structure and/or page layout), or D (Deleted). Each page in the LEP is identified by Chapter-Section-Subject number, page number and page date.

Pages replaced or made obsolete by this revision should be removed and destroyed.

### ATTENTION

IF YOU RECEIVE PRINTED REVISIONS, PLEASE VERIFY THAT YOU HAVE RECEIVED AND FILED THE PREVIOUS REVISION. BOEING MUST BE NOTIFIED WITHIN 30 DAYS IF YOU HAVE NOT RECEIVED THE PREVIOUS REVISION. REQUESTS FOR REVISIONS OTHER THAN THE PREVIOUS REVISION WILL REQUIRE A COMPLETE MANUAL REPRINT SUBJECT TO REPRINT CHARGES SHOWN IN THE DATA AND SERVICES CATALOG.

**33-20-20**  
TRANSMITTAL LETTER  
Page 1  
Jul 01/2009



**COMPONENT MAINTENANCE MANUAL**

Location of Change

Description of Change

NO HIGHLIGHTS

**33-20-20**

HIGHLIGHTS

Page 1

Jul 01/2009



## COMPONENT MAINTENANCE MANUAL

Subject/Page	Date	Subject/Page	Date	Subject/Page	Date
TITLE PAGE		33-20-20 CLEANING (cont)			
O 1	Jul 01/2009	402	BLANK		
2	BLANK	33-20-20 CHECK			
33-20-20 TRANSMITTAL LETTER		501	Mar 01/2006		
O 1	Jul 01/2009	502	BLANK		
2	BLANK	33-20-20 REPAIR - GENERAL			
33-20-20 HIGHLIGHTS		601	Mar 01/2006		
O 1	Jul 01/2009	602	BLANK		
2	BLANK	33-20-20 ASSEMBLY			
33-20-20 EFFECTIVE PAGES		701	Mar 01/2006		
1	Jul 01/2009	702	BLANK		
2	BLANK	33-20-20 FITS AND CLEARANCES			
33-20-20 CONTENTS		801	Mar 01/2006		
1	Mar 01/2006	802	BLANK		
2	BLANK	33-20-20 SPECIAL TOOLS, FIXTURES, AND EQUIPMENT			
33-20-20 TR AND SB RECORD		901	Mar 01/2006		
1	Mar 01/2006	902	BLANK		
2	BLANK	33-20-20 ILLUSTRATED PARTS LIST			
33-20-20 REVISION RECORD		1001	Nov 01/2008		
1	Mar 01/2006	1002	Jul 01/2006		
2	Mar 01/2006	1003	Nov 01/2006		
33-20-20 RECORD OF TEMPORARY REVISIONS		1004	Jul 01/2006		
1	Mar 01/2006	1005	Mar 01/2006		
2	Mar 01/2006	1006	Mar 01/2006		
33-20-20 INTRODUCTION		1007	Jul 01/2006		
1	Mar 01/2009	O 1008	Jul 01/2009		
2	BLANK	1009	Mar 01/2006		
33-20-20 DESCRIPTION AND OPERATION		1010	Mar 01/2006		
1	Jul 01/2006	1011	Mar 01/2006		
2	Mar 01/2006	1012	Mar 01/2006		
33-20-20 TESTING AND FAULT ISOLATION					
101	Mar 01/2006				
102	BLANK				
33-20-20 DISASSEMBLY					
301	Mar 01/2006				
302	BLANK				
33-20-20 CLEANING					
401	Mar 01/2006				

A = Added, R = Revised, D = Deleted, O = Overflow

# 33-20-20

EFFECTIVE PAGES

Page 1

Jul 01/2009

**COMPONENT MAINTENANCE MANUAL****TABLE OF CONTENTS**

<b><u>Paragraph Title</u></b>		<b><u>Page</u></b>
GALLEY FLUORESCENT LIGHT ASSEMBLY - DESCRIPTION AND OPERATION		1
TESTING AND FAULT ISOLATION	(Not Applicable)	
DISASSEMBLY	(Not Applicable)	
CLEANING	(Not Applicable)	
CHECK	(Not Applicable)	
REPAIR		601
ASSEMBLY	(Not Applicable)	
FITS AND CLEARANCES	(Not Applicable)	
SPECIAL TOOLS, FIXTURES, AND EQUIPMENT	(Not Applicable)	
ILLUSTRATED PARTS LIST		1001

**33-20-20**

CONTENTS

Page 1

Mar 01/2006

**COMPONENT MAINTENANCE MANUAL****TEMPORARY REVISION AND SERVICE BULLETIN RECORD**

<b>BOEING SERVICE BULLETIN</b>	<b>BOEING TEMPORARY REVISION</b>	<b>OTHER DIRECTIVE</b>	<b>DATE OF INCORPORATION INTO MANUAL</b>

**33-20-20**

TR AND SB RECORD

Page 1

Mar 01/2006



### COMPONENT MAINTENANCE MANUAL

All revisions to this manual will be accompanied by transmittal sheet bearing the revision number. Enter the revision number in numerical order, together with the revision date, the date filed and the initials of the person filing.

Revision		Filed		Revision		Filed	
Number	Date	Date	Initials	Number	Date	Date	Initials

**33-20-20**  
REVISION RECORD  
Page 1  
Mar 01/2006







**COMPONENT MAINTENANCE MANUAL**

All temporary revisions to this manual will be accompanied by a cover sheet bearing the temporary revision number. Enter the temporary revision number in numerical order, together with the temporary revision date, the date the temporary revision is inserted and the initials of the person filing. When the temporary revision is incorporated or cancelled, and the pages are removed, enter the date the pages are removed and the initials of the person who removed the temporary revision.

Temporary Revision		Inserted		Removed		Temporary Revision		Inserted		Removed	
Number	Date	Date	Initials	Date	Initials	Date	Initials	Number	Date	Date	Initials

BOEING PROPRIETARY - Copyright © Unpublished Work - See title page for details

**COMPONENT MAINTENANCE MANUAL**

Temporary Revision		Inserted		Removed		Temporary Revision		Inserted		Removed	
Number	Date	Date	Initials	Date	Initials	Date	Initials	Number	Date	Date	Initials

**33-20-20**

RECORD OF TEMPORARY REVISION

Page 2

Mar 01/2006



## COMPONENT MAINTENANCE MANUAL

### INTRODUCTION

#### 1. General

- A. The instructions in this manual supply the data necessary to do the maintenance functions together with the test, fault isolation, repair, and replacement of the defective parts.
- B. This manual is divided into different parts:
  - (1) Title Page
  - (2) Transmittal Letter
  - (3) Highlights
  - (4) List of Effective Pages
  - (5) Table of Contents
  - (6) Temporary Revision & Service Bulletin Record
  - (7) Record of Revisions
  - (8) Record of Temporary Revisions
  - (9) Introduction
  - (10) Procedures & IPL Sections
- C. Refer to the Table of Contents for the page location of the applicable procedures.
- D. All dimensions, measures, quantities and weights included are in English units. When metric equivalents are given they will be in the parentheses that follow the English units.
- E. The introduction to the Illustrated Parts List (IPL) shows how the IPL data is used.
- F. Design changes, optional parts, configuration differences and Service Bulletin modifications may cause different part numbers. These part numbers are identified in the IPL with an alphabetical letter which is added to the end of the basic item number. This new item number is referred to as an alpha-variant. Throughout the manual, IPL basic item number references also apply to alpha-variants unless shown differently.
- G. Verification:

# 33-20-20

INTRODUCTION

Page 1

Mar 01/2009



## COMPONENT MAINTENANCE MANUAL

### GALLEY FLUORESCENT LIGHT ASSEMBLY - DESCRIPTION AND OPERATION

#### 1. Description

- A. The galley fluorescent light assembly contains sockets and mounting provisions for two fluorescent tubes. Ballasts for the fluorescent tubes are external to the light assembly. A typical galley light schematic with two fluorescent tubes and ballasts is shown in DESCRIPTION AND OPERATION, Figure 1.

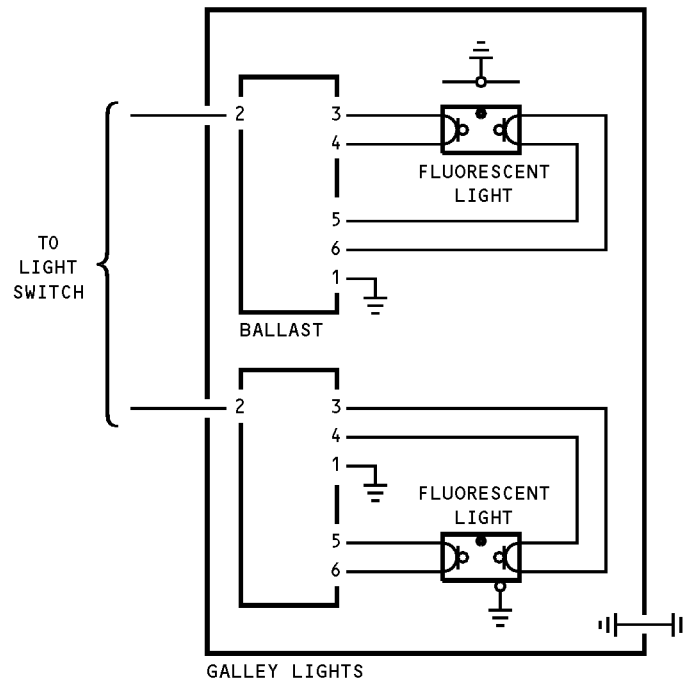
# 33-20-20

DESCRIPTION AND OPERATION

Page 1

Jul 01/2006

# COMPONENT MAINTENANCE MANUAL



Typical Galley Fluorescent Light Schematic  
Figure 1

## 33-20-20

DESCRIPTION AND OPERATION

Page 2

Mar 01/2006



COMPONENT MAINTENANCE MANUAL

TESTING AND FAULT ISOLATION

**(NOT APPLICABLE)**

**33-20-20**

TESTING AND FAULT ISOLATION

Page 101

Mar 01/2006



COMPONENT MAINTENANCE MANUAL

DISASSEMBLY

**(NOT APPLICABLE)**

**33-20-20**

DISASSEMBLY

Page 301

Mar 01/2006



COMPONENT MAINTENANCE MANUAL

CLEANING

**(NOT APPLICABLE)**

**33-20-20**

CLEANING

Page 401

Mar 01/2006





COMPONENT MAINTENANCE MANUAL

CHECK

**(NOT APPLICABLE)**

**33-20-20**

CHECK  
Page 501  
Mar 01/2006



## COMPONENT MAINTENANCE MANUAL

### REPAIR

#### 1. Procedure

- A. All repair may be accomplished with standard industry practices and procedures contained in SOPM 20-11-03 except as listed in the following:
- B. If end caps (IPL Figure 1-15, 35; IPL Figure 2-15, 40) or backing plates (IPL Figure 1-20, 40; IPL Figure 2-20, 45) require replacement bond together per SOPM 20-50-12 using type 38 adhesive.
- C. If felt pad (IPL Figure 1-50; IPL Figure 2-55) requires replacement on fixture (IPL Figure 1-160; IPL Figure 2-165) bond in place per SOPM 20-50-12 using type 40 adhesive.

# 33-20-20

REPAIR - GENERAL

Page 601

Mar 01/2006



COMPONENT MAINTENANCE MANUAL

ASSEMBLY

**(NOT APPLICABLE)**

**33-20-20**

ASSEMBLY

Page 701

Mar 01/2006



COMPONENT MAINTENANCE MANUAL

FITS AND CLEARANCES

**(NOT APPLICABLE)**

**33-20-20**

FITS AND CLEARANCES

Page 801

Mar 01/2006



**COMPONENT MAINTENANCE MANUAL**

**SPECIAL TOOLS, FIXTURES, AND EQUIPMENT**

**(NOT APPLICABLE)**

**33-20-20**

SPECIAL TOOLS, FIXTURES, AND EQUIPMENT

Page 901

Mar 01/2006



## COMPONENT MAINTENANCE MANUAL

### ILLUSTRATED PARTS LIST

#### 1. Introduction

- A. The Illustrated Parts List (IPL) contains an illustration and a list of component parts you can repair or replace. The Illustrated Parts Catalog (IPC) shows how to use the Boeing part number system.
- B. This shows how parts are related: The relation of each item to its next higher assembly (NHA) is shown in the NOMENCLATURE column. Use the indenture system that follows:

1	2	3	4	5	6	7
.	Assembly					
.	Attaching parts for assembly					
.	.	Detail parts for assembly				
.	.	Subassembly				
.	.	Attaching parts for subassembly				
.	.	.	Detail parts for subassembly			
.	.	.	Sub-subassembly			
.	.	.	Attaching parts for subassembly			
.	.	.	.	Details parts for sub-subassembly		
						Detail Installation Parts (Included only if installation parts may be sent to the shop as part of assembly)

- C. Each top assembly is given one use code letter (A, B, C, etc.) in the USAGE CODE column. All subsequent component parts in the list can have one or more of the use code letters to show effectivity to top assemblies. A component part without a use code applies to all top assemblies.
- D. An alphabetical letter is added after the item number for optional parts, parts changed by a Service Bulletin, configuration differences (except left-handed and right-handed parts), last engineering releases, and parts added between item numbers in a sequence. The alphabetical letter will not be shown on the illustration for equivalent parts of the same part number.
- E. Color-coded parts are identified with a single digit alpha following the dash number or with "SP" suffix. If the "SP" suffix is used, it represents consolidation of all color codes applicable for a given usage which are not separately listed. Orders for color-coded parts should include the registry number of the airplane for which the parts are ordered.
- F. If a part number is 15 characters long but will not fit in the part number column, the part number will be displayed with a "~" at the end of the line and will be continued on the next line. The "~" denotes that the part number continues on the next line.
- G. Parts changed by a Service Bulletin are shown by PRE SB XXXX and POST SB XXXX added to the NOMENCLATURE column.
- (1) When a new top assembly is added by a Service Bulletin, PRE SB XXXX and POST SB XXXX will be added at the top assembly level only. The configuration differences at the detail part level are shown by use code letters.
- (2) When the top assembly part number is not changed by the Service Bulletin, PRE SB XXXX and POST SB XXXX will be added at the detail level.
- H. Interchangeable Parts

# 33-20-20

ILLUSTRATED PARTS LIST

Page 1001

Nov 01/2008



## COMPONENT MAINTENANCE MANUAL

Optional (OPT)	The part is optional to and interchangeable with other parts that have the same item number.
Replaces, Replaced by and not interchangeable with (REPLACES, REPLACED BY AND NOT INTCHG/W)	The part replaces and is not interchangeable with the initial part.
Replaces, Replaced by (REPLACES, REPLACED BY)	The part replaces and is interchangeable with, or is an alternative to, the initial part.

### VENDOR CODES

<b>Code</b>	<b>Name</b>
81590	KORRY ELECTRONIC INC SUB OF CRITON CORP 901 DEXTER AVENUE NORTH SEATTLE, WASHINGTON 98109-3515 FORMERLY KORRY, BORIS VB0021 AND KORRY MFG CO

# 33-20-20

ILLUSTRATED PARTS LIST

Page 1002

Jul 01/2006



## COMPONENT MAINTENANCE MANUAL

### NUMERICAL INDEX

PART NUMBER	AIRLINE PART NUMBER	FIGURE	ITEM	UNITS PER ASSEMBLY
104-1021		1	65	4
		2	70	4
		2	70A	4
560		1	65A	4
		2	70B	4
65-57426-1		1	130	1
65-57426-11		2	60	1
65-57426-12		2	55	1
65-57426-14		2	85	2
65-57426-17		2	85A	2
		2	85B	2
65-57426-18		2	90	2
65-57426-19		2	165	1
65-57426-2		1	160	1
65-57426-20		2	135	1
65-57426-21		2	135A	1
65-57426-22		2	165A	1
65-57426-23		2	135B	1
65-57426-24		2	165B	1
65-57426-25		2	135C	1
65-57426-3		1	55	1
65-57426-4		1	50	1
65-57426-5		1	115	1
65-57426-6		1	75	2
65-57426-7		1	90	1
65-57426-8		1	135	3
		2	140	3
65-58220-1		1	1	5
65-58220-2		2	1	RF
65-58220-3		2	1A	RF
65-58220-4		2	1B	RF
65-58220-5		2	1C	RF
65-58220-6		2	1D	RF
65-58220-7		2	1E	RF

# 33-20-20

ILLUSTRATED PARTS LIST

Page 1003

Nov 01/2006





## COMPONENT MAINTENANCE MANUAL

PART NUMBER	AIRLINE PART NUMBER	FIGURE	ITEM	UNITS PER ASSEMBLY
69-45477-1		1	10	1
		2	5	1
69-45477-2		1	30	1
		2	30	1
69-45477-3		1	15	1
		1	35	1
		2	15	1
		2	40	1
69-45477-4		1	20	1
		1	40	1
		2	20	1
		2	45	1
69-45478-1		1	5	1
		2	5A	1
		2	5B	1
69-45478-2		1	25	1
		2	30A	1
		2	30B	1
AN341-10		1	110	2
		2	125	2
AN525-10R10		1	45	2
AN525-832R6		1	60	3
		2	65	3
AN960D10L		1	105	4
AN960JD10L		2	115B	2
AN960KD10L		2	115	4
AN960PD10L		2	115A	4
BACF3F008J007NN		1	71A	4
BACF3F008J010NN		2	82	4
BACN10JC08		2	25	1
		2	50	1
BACN10JN08		2	170	3
BACN10JP08A		2	95	2
BACR15BA3D		2	100	4
BACR15BB3D		1	120	2

# 33-20-20

ILLUSTRATED PARTS LIST

Page 1004

Jul 01/2006



## COMPONENT MAINTENANCE MANUAL

PART NUMBER	AIRLINE PART NUMBER	FIGURE	ITEM	UNITS PER ASSEMBLY
		1	145	6
		2	105	4
		2	150	6
BACR15BB4D		1	95	4
BACS12FA08K10		2	10	1
		2	35	1
BACS40R4B10F		1	140	3
		2	145	3
BACW10P151AL		2	80	8
MS20426D3		1	85A	2
		1	155A	6
MS35338-43		2	120	1
MS35650-305T		2	125A	2
NAS1068A08		1	150	3
NAS1068A3		1	80	1
NAS1801-08-10		2	10A	1
		2	35A	1
NAS1801-3-9		2	110A	1
NAS428-3-4		1	100	1
		2	110	1
NAS514P632-3		2	75A	8
NAS557-8A		1	125	2
		2	130	2
NAS601-3P		1	70A	8
		2	75	8
NAS623-2-2		2	65A	3

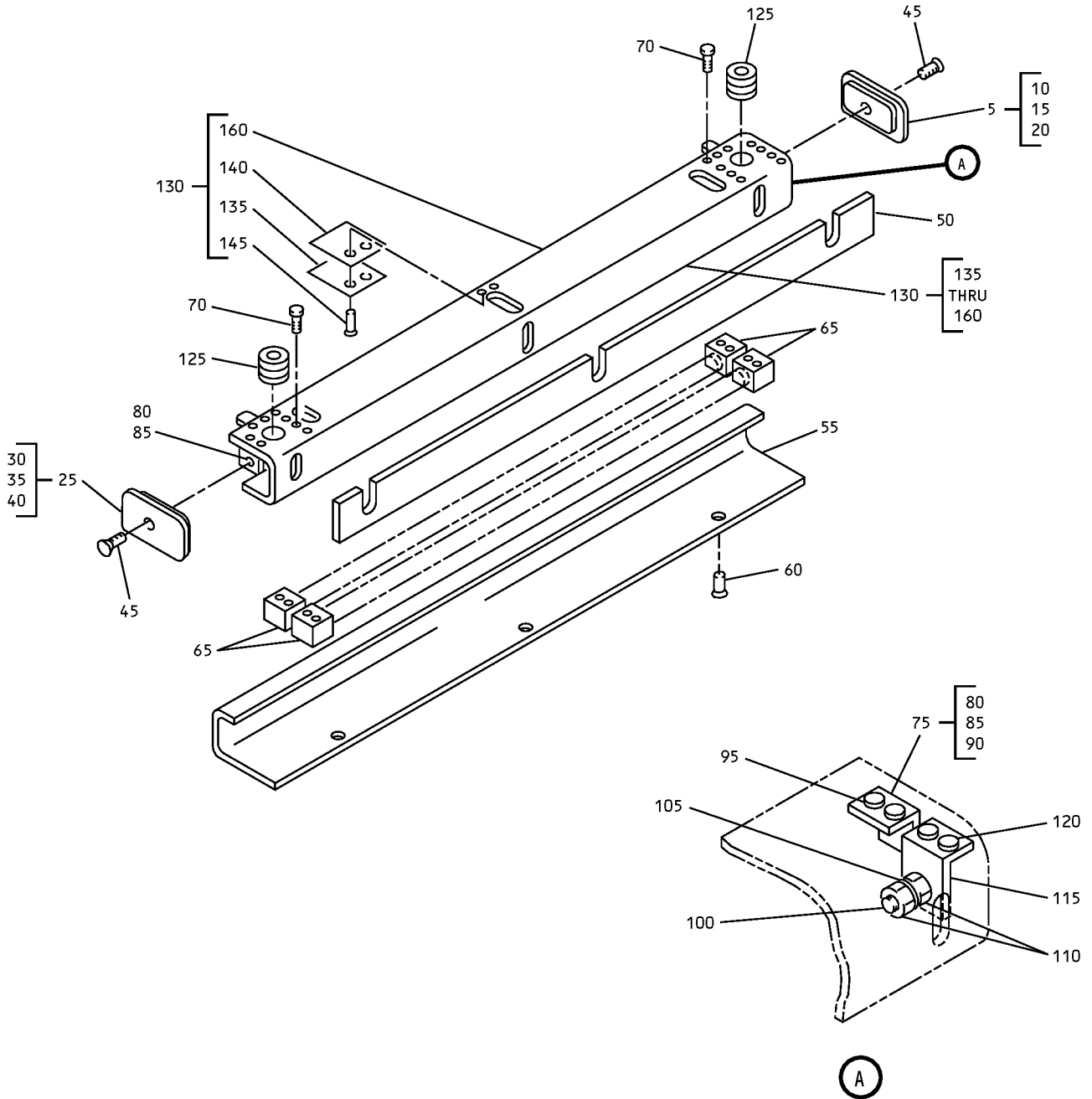
# 33-20-20

ILLUSTRATED PARTS LIST

Page 1005

Mar 01/2006

COMPONENT MAINTENANCE MANUAL



Galley Fluorescent Light Assembly  
IPL Figure 1

**33-20-20**  
ILLUSTRATED PARTS LIST  
Page 1006  
Mar 01/2006



## COMPONENT MAINTENANCE MANUAL

FIG/ ITEM	PART NUMBER	AIRLINE PART NUMBER	NOMENCLATURE							USAGE CODE	UNITS PER ASSY
			1	2	3	4	5	6	7		
1-											
1	65-58220-1										
5	69-45478-1										1
10	69-45477-1										1
15	69-45477-3										1
20	69-45477-4										1
25	69-45478-2										1
30	69-45477-2										1
35	69-45477-3										1
40	69-45477-4										1
45	AN525-10R10										2
50	65-57426-4										1
55	65-57426-3										1
60	AN525-832R6										3
65	104-1021										4
65A	560										4
70	NAS514P632-3										
70A	NAS601-3P										8
-71	BACF3F008J010NN										
-71A	BACF3F008J007NN										4

-Item not Illustrated

# 33-20-20

ILLUSTRATED PARTS LIST

Page 1007

Jul 01/2006

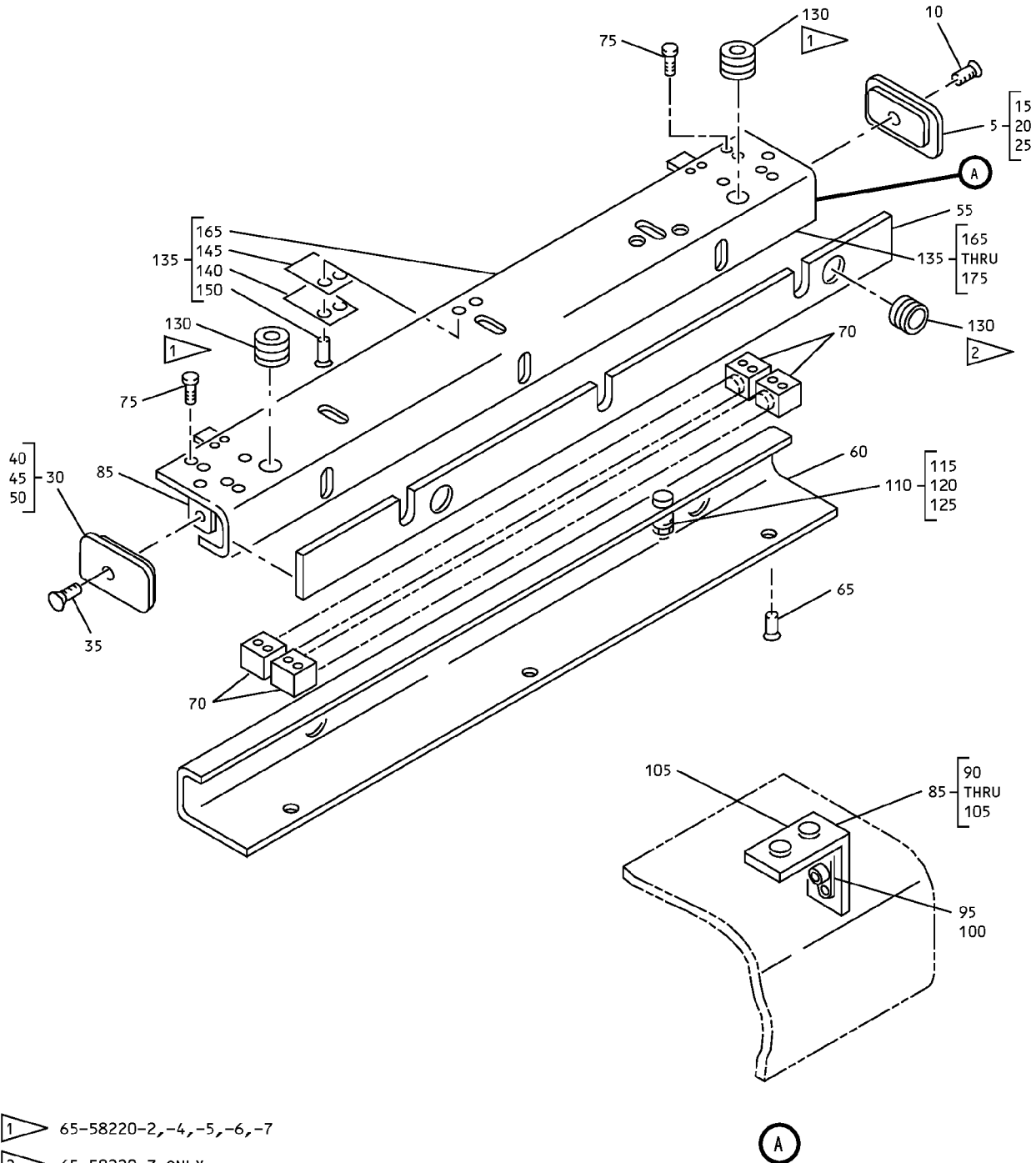


## COMPONENT MAINTENANCE MANUAL

FIG/ ITEM	PART NUMBER	AIRLINE PART NUMBER	NOMENCLATURE							USAGE CODE	UNITS PER ASSY
			1	2	3	4	5	6	7		
1-											
75	65-57426-6								. CLIP ASSY		2
80	NAS1068A3								. . NUTPLATE		1
85	BACR15BA3D								DELETED		
85A	MS20426D3								. . RIVET		2
90	65-57426-7								. . CLIP		1
									ATTACHING PARTS		
95	BACR15BB4D								. RIVET		4
									-----*		
100	NAS428-3-4								. BOLT		1
105	AN960D10L								. WASHER		4
110	AN341-10								. NUT		2
115	65-57426-5								. CLIP		1
									ATTACHING PARTS		
120	BACR15BB3D								. RIVET		2
									-----*		
125	NAS557-8A								. GROMMET		2
130	65-57426-1								. FIXTURE ASSY		1
135	65-57426-8								. . CLIP		3
140	BACS40R4B10F								. . SHIM		3
									ATTACHING PARTS		
145	BACR15BB3D								. . RIVET		6
									-----*		
150	NAS1068A08								. . NUTPLATE		3
155	BACR15BA3D								DELETED		
155A	MS20426D3								. . RIVET		6
160	65-57426-2								. . FIXTURE		1

-Item not Illustrated

COMPONENT MAINTENANCE MANUAL



- 1 65-58220-2,-4,-5,-6,-7
- 2 65-58220-3 ONLY

65-58220-2 THRU -7  
Galley Fluorescent Light Assembly  
IPL Figure 2

(A)



## COMPONENT MAINTENANCE MANUAL

FIG/ ITEM	PART NUMBER	AIRLINE PART NUMBER	NOMENCLATURE							USAGE CODE	UNITS PER ASSY
			1	2	3	4	5	6	7		
2-											
-1	65-58220-2									A	RF
-1A	65-58220-3									B	RF
-1B	65-58220-4									C	RF
-1C	65-58220-5									D	RF
-1D	65-58220-6									E	RF
-1E	65-58220-7									F	RF
5	69-45477-1									A-D	1
5A	69-45478-1									A-D	1
5B	69-45478-1									E, F	1
10	BACS12FA08K10									A-E	1
10A	NAS1801-08-10									F	1
15	69-45477-3									A-D	1
20	69-45477-4									A-D	1
25	BACN10JC08									A	1
30	69-45477-2									A-D	1
30A	69-45478-2									A-D	1
30B	69-45478-2									E, F	1
35	BACS12FA08K10									A-E	1
35A	NAS1801-08-10									F	1
40	69-45477-3									A-D	1
45	69-45477-4									A-D	1
50	BACN10JC08									A	1
55	65-57426-12										1
60	65-57426-11										1

-Item not Illustrated

# 33-20-20

ILLUSTRATED PARTS LIST

Page 1010

Mar 01/2006



## COMPONENT MAINTENANCE MANUAL

FIG/ ITEM	PART NUMBER	AIRLINE PART NUMBER	NOMENCLATURE							USAGE CODE	UNITS PER ASSY
			1	2	3	4	5	6	7		
2-			ATTACHING PARTS								
65	AN525-832R6		.							A-E	3
65A	NAS623-2-2		.							F	3
			----- * -----								
70	104-1021		.							A-C, E, F	4
70A	104-1021		.							D	4
70B	560		.							D	4
			ATTACHING PARTS								
75	NAS601-3P		.							A-D	8
75A	NAS514P632-3		.							E, F	8
-80	BACW10P151AL		.							E, F	8
			----- * -----								
-82	BACF3F008J010NN		.							D	4
85	65-57426-14		.							A	2
85A	65-57426-17		.							A	2
85B	65-57426-17		.							B-F	2
			ATTACHING PARTS								
90	65-57426-18		.								2
95	BACN10JP08A		.								2
100	BACR15BA3D		.	.							4
105	BACR15BB3D		.								4
			----- * -----								
110	NAS428-3-4		.							A-D	1
110A	NAS1801-3-9		.							E, F	1
115	AN960KD10L		.							B, C, D	4
115A	AN960PD10L		.							A	4
115B	AN960JD10L		.							E, F	2

-Item not Illustrated

# 33-20-20

ILLUSTRATED PARTS LIST

Page 1011

Mar 01/2006





## COMPONENT MAINTENANCE MANUAL

FIG/ ITEM	PART NUMBER	AIRLINE PART NUMBER	NOMENCLATURE							USAGE CODE	UNITS PER ASSY
			1	2	3	4	5	6	7		
2-											
120	MS35338-43								. WASHER	E, F	1
125	AN341-10								. NUT	A, B	2
125A	MS35650-305T								. NUT	C-F	2
130	NAS557-8A								. GROMMET		2
135	65-57426-20								. FIXTURE ASSY	A	1
135A	65-57426-21								. FIXTURE ASSY	B	1
135B	65-57426-23								. FIXTURE ASSY	C, E, F	1
135C	65-57426-25								. FIXTURE ASSY	D	1
									ATTACHING PARTS		
140	65-57426-8								. CLIP		3
145	BACS40R4B10F								. SHIM		3
150	BACR15BB3D								. . SCREW		6
155	BACN10JN08								DELETED		
160	BACR15BA3D								DELETED		
165	65-57426-19								. FIXTURE	A	1
165A	65-57426-22								. FIXTURE	B	1
165B	65-57426-24								. FIXTURE	C-F	1
170	BACN10JN08								. . NUTPLATE		3
									----- * -----		

-Item not Illustrated