



# **COMPONENT MAINTENANCE MANUAL WITH ILLUSTRATED PARTS LIST INBOARD FLAP FLAP ASSEMBLY**

## **PART NUMBER**

**113A2002-10, -11, -12, -13, -14, -15, -16, -17, -18,  
-19, -20, -201, -202, -203, -204, -205, -206, -207,  
-208, -21, -22, -23, -24, -25, -26, -27, -28, -29, -30,  
-31, -32, -7, -8, -9**

**BOEING PROPRIETARY, CONFIDENTIAL, AND/OR TRADE SECRET**

Copyright © 1995 The Boeing Company  
Unpublished Work - All Rights Reserved

Boeing claims copyright in each page of this document only to the extent that the page contains copyrightable subject matter. Boeing also claims copyright in this document as a compilation and/or collective work.

This document includes proprietary information owned by The Boeing Company and/or one or more third parties. Treatment of the document and the information it contains is governed by contract with Boeing. For more information, contact The Boeing Company, P.O. Box 3707, Seattle, Washington 98124.

Boeing, the Boeing signature, the Boeing symbol, 707, 717, 727, 737, 747, 757, 767, 777, 787, Dreamliner, BBJ, DC-8, DC-9, DC-10, KC-10, KDC-10, MD-10, MD-11, MD-80, MD-88, MD-90, P-8A, Poseidon and the Boeing livery are all trademarks owned by The Boeing Company; and no trademark license is granted in connection with this document unless provided in writing by Boeing.

PUBLISHED BY BOEING COMMERCIAL AIRPLANES GROUP, SEATTLE, WASHINGTON, USA  
A DIVISION OF THE BOEING COMPANY  
PAGE DATE: Jul 01/2009

**57-53-04**

Page 1  
Jul 01/2009



## COMPONENT MAINTENANCE MANUAL

Revision No. 11  
Jul 01/2009

To: All holders of INBOARD FLAP FLAP ASSEMBLY 57-53-04.

Attached is the current revision to this COMPONENT MAINTENANCE MANUAL

The COMPONENT MAINTENANCE MANUAL is furnished either as a printed manual, on microfilm, or digital products, or any combination of the three. This revision replaces all previous microfilm cartridges or digital products. All microfilm and digital products are reissued with all obsolete data deleted and all updated pages added.

For printed manuals, changes are indicated on the List of Effective Pages (LEP). The pages which are revised will be identified on the LEP by an R (Revised), A (Added), O (Overflow, i.e. changes to the document structure and/or page layout), or D (Deleted). Each page in the LEP is identified by Chapter-Section-Subject number, page number and page date.

Pages replaced or made obsolete by this revision should be removed and destroyed.

### ATTENTION

IF YOU RECEIVE PRINTED REVISIONS, PLEASE VERIFY THAT YOU HAVE RECEIVED AND FILED THE PREVIOUS REVISION. BOEING MUST BE NOTIFIED WITHIN 30 DAYS IF YOU HAVE NOT RECEIVED THE PREVIOUS REVISION. REQUESTS FOR REVISIONS OTHER THAN THE PREVIOUS REVISION WILL REQUIRE A COMPLETE MANUAL REPRINT SUBJECT TO REPRINT CHARGES SHOWN IN THE DATA AND SERVICES CATALOG.

# 57-53-04

TRANSMITTAL LETTER

Page 1

Jul 01/2009

**COMPONENT MAINTENANCE MANUAL****Location of Change**

57-53-04

FRONTMATTER

REPAIR-GENERAL

REPAIR 2-1

ILLUSTRATED PARTS LIST

**Description of Change**

Changed the part number information on the title page.

Changed the data in the TEMPORARY REVISION AND SERVICE BULLETIN RECORD list.

Changed the format of the table.

Edited without technical change.

Added Top Assemblies 113A2002-31, -32, -207, -208.

Changed the data in the Vendor Codes list.

Changed the data in the NUMERICAL INDEX list.

Added Top Assemblies 113A2002-31, -32, -207, -208.

**57-53-04**

HIGHLIGHTS

Page 1

Jul 01/2009



## COMPONENT MAINTENANCE MANUAL

Subject/Page	Date	Subject/Page	Date	Subject/Page	Date
TITLE PAGE		57-53-04 CLEANING (cont)		57-53-04 ILLUSTRATED PARTS LIST (cont)	
R 1	Jul 01/2009	402	BLANK	R 1007	Jul 01/2009
2	BLANK	57-53-04 CHECK		O 1008	Jul 01/2009
57-53-04 TRANSMITTAL LETTER		501	Mar 01/2006	R 1009	Jul 01/2009
O 1	Jul 01/2009	502	BLANK	R 1010	Jul 01/2009
2	BLANK	57-53-04 REPAIR - GENERAL		O 1011	Jul 01/2009
57-53-04 HIGHLIGHTS		R 601	Jul 01/2009	O 1012	Jul 01/2009
O 1	Jul 01/2009	602	Mar 01/2006	O 1013	Jul 01/2009
2	BLANK	57-53-04 REPAIR 1-1		O 1014	Jul 01/2009
57-53-04 EFFECTIVE PAGES		601	Mar 01/2006	O 1015	Jul 01/2009
1	Jul 01/2009	602	BLANK	O 1016	Jul 01/2009
2	BLANK	57-53-04 REPAIR 2-1		O 1017	Jul 01/2009
57-53-04 CONTENTS		R 601	Jul 01/2009	O 1018	Jul 01/2009
1	Mar 01/2006	602	BLANK	O 1019	Jul 01/2009
2	BLANK	57-53-04 REPAIR 3-1		R 1020	Jul 01/2009
57-53-04 TR AND SB RECORD		601	Jul 01/2008	R 1021	Jul 01/2009
R 1	Jul 01/2009	602	BLANK	R 1022	Jul 01/2009
2	BLANK	57-53-04 ASSEMBLY		R 1023	Jul 01/2009
57-53-04 REVISION RECORD		701	Mar 01/2006	R 1024	Jul 01/2009
1	Mar 01/2006	702	BLANK	R 1025	Jul 01/2009
2	Mar 01/2006	57-53-04 FITS AND CLEARANCES		R 1026	Jul 01/2009
57-53-04 RECORD OF TEMPORARY REVISIONS		801	Jul 01/2006	R 1027	Jul 01/2009
1	Mar 01/2006	802	Mar 01/2006	R 1028	Jul 01/2009
2	Mar 01/2006	803	Mar 01/2006	A 1029	Jul 01/2009
57-53-04 INTRODUCTION		804	Mar 01/2006	A 1030	BLANK
1	Mar 01/2009	805	Mar 01/2006		
2	BLANK	806	Jul 01/2008		
57-53-04 DESCRIPTION AND OPERATION		807	Mar 01/2006		
1	Mar 01/2006	808	BLANK		
2	BLANK	57-53-04 SPECIAL TOOLS, FIXTURES, AND EQUIPMENT			
57-53-04 TESTING AND FAULT ISOLATION		901	Mar 01/2006		
101	Mar 01/2006	902	BLANK		
102	BLANK	57-53-04 ILLUSTRATED PARTS LIST			
57-53-04 DISASSEMBLY		1001	Nov 01/2008		
301	Mar 01/2006	R 1002	Jul 01/2009		
302	BLANK	R 1003	Jul 01/2009		
57-53-04 CLEANING		R 1004	Jul 01/2009		
401	Mar 01/2006	R 1005	Jul 01/2009		
		R 1006	Jul 01/2009		

A = Added, R = Revised, D = Deleted, O = Overflow

# 57-53-04

EFFECTIVE PAGES

Page 1

Jul 01/2009



## COMPONENT MAINTENANCE MANUAL

### TABLE OF CONTENTS

<u>Paragraph Title</u>		<u>Page</u>
INBOARD FLAP - FLAP ASSEMBLY - DESCRIPTION AND OPERATION		1
TESTING AND FAULT ISOLATION	(Not Applicable)	
DISASSEMBLY	(Not Applicable)	
CLEANING		401
CHECK		501
REPAIR		601
ASSEMBLY	(Not Applicable)	
FITS AND CLEARANCES		801
SPECIAL TOOLS, FIXTURES, AND EQUIPMENT	(Not Applicable)	
ILLUSTRATED PARTS LIST		1001

# 57-53-04

CONTENTS

Page 1

Mar 01/2006



**COMPONENT MAINTENANCE MANUAL**

**TEMPORARY REVISION AND SERVICE BULLETIN RECORD**

<b>BOEING SERVICE BULLETIN</b>	<b>BOEING TEMPORARY REVISION</b>	<b>OTHER DIRECTIVE</b>	<b>DATE OF INCORPORATION INTO MANUAL</b>
		PRR 38040-8	DEC 01/97
		PRR 38197	DEC 01/97
		PRR 38472	MAR 01/03
		PRR 38609	JUL 01/06

**57-53-04**

TR AND SB RECORD

Page 1

Jul 01/2009









**COMPONENT MAINTENANCE MANUAL**

All temporary revisions to this manual will be accompanied by a cover sheet bearing the temporary revision number. Enter the temporary revision number in numerical order, together with the temporary revision date, the date the temporary revision is inserted and the initials of the person filing. When the temporary revision is incorporated or cancelled, and the pages are removed, enter the date the pages are removed and the initials of the person who removed the temporary revision.

Temporary Revision		Inserted		Removed		Temporary Revision		Inserted		Removed	
Number	Date	Date	Initials	Date	Initials	Date	Initials	Number	Date	Date	Initials





## COMPONENT MAINTENANCE MANUAL

### INTRODUCTION

#### 1. General

- A. The instructions in this manual supply the data necessary to do the maintenance functions together with the test, fault isolation, repair, and replacement of the defective parts.
- B. This manual is divided into different parts:
  - (1) Title Page
  - (2) Transmittal Letter
  - (3) Highlights
  - (4) List of Effective Pages
  - (5) Table of Contents
  - (6) Temporary Revision & Service Bulletin Record
  - (7) Record of Revisions
  - (8) Record of Temporary Revisions
  - (9) Introduction
  - (10) Procedures & IPL Sections
- C. Components that can be repaired have a different repair number for each specified repair. To find the repair number location of a component, look in the Repair-General procedure at the beginning of the REPAIR section. The Repair-General procedure also has an explanation of the True Position Dimension symbols used.
- D. All dimensions, measures, quantities and weights included are in English units. When metric equivalents are given they will be in the parentheses that follow the English units.
- E. The introduction to the Illustrated Parts List (IPL) shows how the IPL data is used.
- F. Design changes, optional parts, configuration differences and Service Bulletin modifications may cause different part numbers. These part numbers are identified in the IPL with an alphabetical letter which is added to the end of the basic item number. This new item number is referred to as an alpha-variant. Throughout the manual, IPL basic item number references also apply to alpha-variants unless shown differently.
- G. The tool reference numbers found in the individual procedures and in the Special Tools, Fixtures, and Equipment section are used to identify if a tool is a standard tool (STD-XXXX), a commercial tool (COM-XXXX), or a Special Tool (SPL-XXXX). This reference number is also used to distinguish between tools with similar names in the same procedure. These reference numbers are for use in the documentation only. They are not to be used for ordering tools.

# 57-53-04

INTRODUCTION

Page 1

Mar 01/2009



## COMPONENT MAINTENANCE MANUAL

### INBOARD FLAP - FLAP ASSEMBLY - DESCRIPTION AND OPERATION

#### 1. Description

- A. This component maintenance manual provides coverage for installation parts of the inboard flap - flap assembly, outboard carriage assembly, inboard carriage assembly, aft flap assembly, and the main flap assembly.

# 57-53-04

DESCRIPTION AND OPERATION

Page 1

Mar 01/2006



**COMPONENT MAINTENANCE MANUAL**

**TESTING AND FAULT ISOLATION**

**(NOT APPLICABLE)**

**57-53-04**

TESTING AND FAULT ISOLATION

Page 101

Mar 01/2006



COMPONENT MAINTENANCE MANUAL

DISASSEMBLY

**(NOT APPLICABLE)**

**57-53-04**

DISASSEMBLY

Page 301

Mar 01/2006



## COMPONENT MAINTENANCE MANUAL

### CLEANING

#### 1. General

- A. This procedure has the data necessary to clean the inboard flap - flap assembly.
- B. Refer to the Standard Overhaul Practices Manual (SOPM) for the SOPM subjects identified in this procedure.
- C. Refer to IPL Figure 1 for item numbers.

#### 2. Cleaning

##### A. References

Reference	Title
SOPM 20-30-03	GENERAL CLEANING PROCEDURES

##### B. Procedure

- (1) Use standard industry procedures and refer to SOPM 20-30-03 to clean all parts.

# 57-53-04

CLEANING

Page 401

Mar 01/2006



## COMPONENT MAINTENANCE MANUAL

### CHECK

#### 1. General

- A. This procedure has the data necessary to find defects in the material of the specified parts.
- B. Refer to FITS AND CLEARANCES for the design dimension and wear limits.
- C. Refer to the Standard Overhaul Practices Manual (SOPM) for the SOPM subjects identified in this procedure.
- D. Refer to IPL Figure 1 for item numbers.

#### 2. Check

##### A. References

Reference	Title
SOPM 20-20-02	PENETRANT METHODS OF INSPECTION

##### B. Procedure

- (1) Use standard industry procedures to do a visual check of all the parts for defects. Do the penetrant or magnetic particle check if the visual check shows possible damage or if you suspect possible damage on the parts listed below:
- (2) Do a penetrant check (SOPM 20-20-02) of these parts:
  - (a) Spacer (90).
  - (b) Retainer (230).
  - (c) Torque tube (235).

# 57-53-04

CHECK  
Page 501  
Mar 01/2006





## COMPONENT MAINTENANCE MANUAL

### REPAIR

#### 1. General

- A. Instructions for repair, refinish, and replacement of the specified subassembly parts are included in each REPAIR when applicable:

<b>PART NUMBER</b>	<b>NOMENCLATURE</b>	<b>REPAIR</b>
—	REFINISH OF OTHER PARTS	1-1
113A2002	INBOARD FLAP - FLAP ASSEMBLY	2-1
113A2881	RUB BLOCK ASSEMBLY	3-1

#### 2. Dimensioning Symbols

- A. Standard True Position Dimensioning Symbols used in the applicable repair procedures are shown in REPAIR-GENERAL, Figure 601.

# 57-53-04

REPAIR - GENERAL

Page 601

Jul 01/2009



COMPONENT MAINTENANCE MANUAL

- STRAIGHTNESS
- ▭ FLATNESS
- ⊥ PERPENDICULARITY (OR SQUARENESS)
- // PARALLELISM
- ROUNDNESS
- ⊙ CYLINDRICITY
- ⌒ PROFILE OF A LINE
- ⌓ PROFILE OF A SURFACE
- ◎ CONCENTRICITY
- ≡ SYMMETRY
- ∠ ANGULARITY
- ↗ RUNOUT
- ↗↗ TOTAL RUNOUT
- COUNTERBORE OR SPOTFACE
- ∇ COUNTERSINK
- ⊕ THEORETICAL EXACT POSITION OF A FEATURE (TRUE POSITION)

- ∅ DIAMETER
- S ∅ SPHERICAL DIAMETER
- R RADIUS
- SR SPHERICAL RADIUS
- ( ) REFERENCE
- BASIC A THEORETICALLY EXACT DIMENSION USED TO DESCRIBE SIZE, SHAPE OR LOCATION OF A FEATURE. FROM THIS FEATURE PERMISSIBLE VARIATIONS ARE ESTABLISHED BY TOLERANCES ON OTHER DIMENSIONS OR NOTES.
- DIM**
- A-** DATUM
- (M) MAXIMUM MATERIAL CONDITION (MMC)
- (L) LEAST MATERIAL CONDITION (LMC)
- (S) REGARDLESS OF FEATURE SIZE (RFS)
- (P) PROJECTED TOLERANCE ZONE
- FIM FULL INDICATOR MOVEMENT

EXAMPLES

- 0.002** STRAIGHT WITHIN 0.002
- ⊥ 0.002 B** PERPENDICULAR TO DATUM B WITHIN 0.002
- // 0.002 A** PARALLEL TO DATUM A WITHIN 0.002
- 0.002** ROUND WITHIN 0.002
- ⊙ 0.010** CYLINDRICAL SURFACE MUST LIE BETWEEN TWO CONCENTRIC CYLINDERS, ONE OF WHICH HAS A RADIUS 0.010 INCH GREATER THAN THE OTHER
- ⌒ 0.006 A** EACH LINE ELEMENT OF THE SURFACE AT ANY CROSS SECTION MUST LIE BETWEEN TWO PROFILE BOUNDARIES 0.006 INCH APART RELATIVE TO DATUM A
- ⌓ 0.020 A** SURFACES MUST LIE WITHIN PARALLEL BOUNDARIES 0.020 INCH APART AND EQUALLY DISPOSED ABOUT TRUE PROFILE

- ◎ ∅ 0.0005 C** CONCENTRIC TO DATUM C WITHIN 0.0005 DIAMETER
- ≡ 0.010 A** SYMMETRICAL WITH DATUM A WITHIN 0.010
- ∠ 0.005 A** ANGULAR TOLERANCE 0.005 WITH DATUM A
- ⊕ ∅ 0.002 (S) B** LOCATED AT TRUE POSITION WITHIN 0.002 DIA RELATIVE TO DATUM B, REGARDLESS OF FEATURE SIZE
- ⊥ ∅ 0.010 (M) A** AXIS IS TOTALLY WITHIN A CYLINDER OF 0.010 INCH DIAMETER, PERPENDICULAR TO DATUM A, AND EXTENDING 0.510 INCH ABOVE DATUM A, MAXIMUM MATERIAL CONDITION
- 0.510 (P)**
- 2.000** THEORETICALLY EXACT DIMENSION IS 2.000
- OR
- 2.000**
- BSC

True Position Dimensioning Symbols  
Figure 601

57-53-04

REPAIR - GENERAL

Page 602

Mar 01/2006



## COMPONENT MAINTENANCE MANUAL

### REFINISH OF OTHER PARTS - REPAIR 1-1

#### 1. General

- A. This procedure has the data necessary to refinish the parts which are not given in the specified repairs.
- B. Refer to the Standard Overhaul Practice Manual (SOPM) for the SOPM subjects identified in this procedure.
- C. Refer to IPL Figure 1 for item numbers.

#### 2. Refinish of Other Parts

- A. Consumable Materials

**NOTE:** Equivalent substitutes may be used.

Reference	Description	Specification
C00259	Primer - Chemical And Solvent Resistant Finish, Epoxy Resin	BMS10-11, Type I
D50092	Lubricant - Solid Film	BMS 3-8, Type 6, Class 1, 3 or 4

- B. References

Reference	Title
SOPM 20-30-02	STRIPPING OF PROTECTIVE FINISHES
SOPM 20-41-01	DECODING TABLE FOR BOEING FINISH CODES
SOPM 20-60-02	FINISHING MATERIALS

- C. Procedure

**NOTE:** For stripping of protective finishes, refer to SOPM 20-30-02. For decoding table for Boeing finish codes, refer to SOPM 20-41-01. For finishing materials, refer to SOPM 20-60-02.

- (1) Instructions for the repair of the parts listed in REPAIR 1-1, Table 601 is for repair of the initial finish.

**Table 601:** Refinish Details

IPL FIG. & ITEM	MATERIAL	FINISH
IPL Fig. 1		
Spacer (90)	Aluminum alloy	Anodize (F-17.31) Apply primer, C00259 (F-20.02).
Plate (155,160)	15-5PH, 180-200 ksi	Passivate (F-17.25).
Torque tube (235)	Titanium alloy	Apply solid film lubricant, D50092(F-19.10) to the threads only.

# 57-53-04

REPAIR 1-1

Page 601

Mar 01/2006



## COMPONENT MAINTENANCE MANUAL

### INBOARD FLAP - FLAP ASSEMBLY - REPAIR 2-1

113A2002-5, -6, -7, -8, -9, -10, -11, -12, -13, -14, -15, -16, -17, -18, -19, -20, -21, -22, -23, -24, -25, -26, -27, -28, -29, -30, -31, -32, -201, -202, -203, -204, -205, -206, -207, -208

#### 1. General

- A. This procedure has the data necessary to replace the bushings in the inboard flap - flap assembly (1C, 5B).
- B. Refer to the Standard Overhaul Practice Manual (SOPM) for the SOPM subjects identified in this procedure.
- C. Refer to the for the Standard True Position Dimensioning Symbols shown in the repair.
- D. Refer to IPL Figure 1 for item numbers.

#### 2. Bushing Replacement

##### A. References

Reference	Title
CMM 57-53-09	AFT INBOARD FLAP FLAP ASSEMBLY

##### B. Procedure

- (1) Remove the damaged bushing (285, 290) from the aft flap assembly (295, 300).

**NOTE:** Bushings (285, 290) are installed on the aft flap assembly (295, 300). The coverage of the aft flap assemblies (295, 300) is provided in CMM 57-53-09.

- (2) Install the new bushing (285, 290) on the aft flap assembly (295, 300).

# 57-53-04

REPAIR 2-1

Page 601

Jul 01/2009



## COMPONENT MAINTENANCE MANUAL

### RUB BLOCK ASSEMBLY - REPAIR 3-1

113A2881-3, -4

#### 1. General

- A. This procedure has the data necessary to repair and refinish the rub block assembly (110, 115).
- B. Refer to the Standard Overhaul Practice Manual (SOPM) for the SOPM subjects identified in this procedure.
- C. Refer to the for REPAIR-GENERAL, Figure 601 shown in the repair.

#### 2. Bushing Replacement

- A. Consumable Materials

**NOTE:** Equivalent substitutes may be used.

Reference	Description	Specification
A00247	Sealant - Pressure And Environmental - Chromate Type	BMS 5-95
A01076	Adhesive - Synthetic Rubber	BAC5010, Type 93 (BMS5-95, Class B)

- B. References

Reference	Title
SOPM 20-50-12	APPLICATION OF ADHESIVES
SOPM 20-60-04	MISCELLANEOUS MATERIALS

- C. Procedure

**NOTE:** For miscellaneous materials, refer to SOPM 20-60-04.

- (1) Remove the damaged bushing (120) from the block (125, 130).
- (2) Install the new bushing (120) on the block (125,130) per SOPM 20-50-12, adhesive, A01076. Wipe excess sealant, A00247.

# 57-53-04

REPAIR 3-1  
Page 601  
Jul 01/2008



COMPONENT MAINTENANCE MANUAL

ASSEMBLY

**(NOT APPLICABLE)**

**57-53-04**

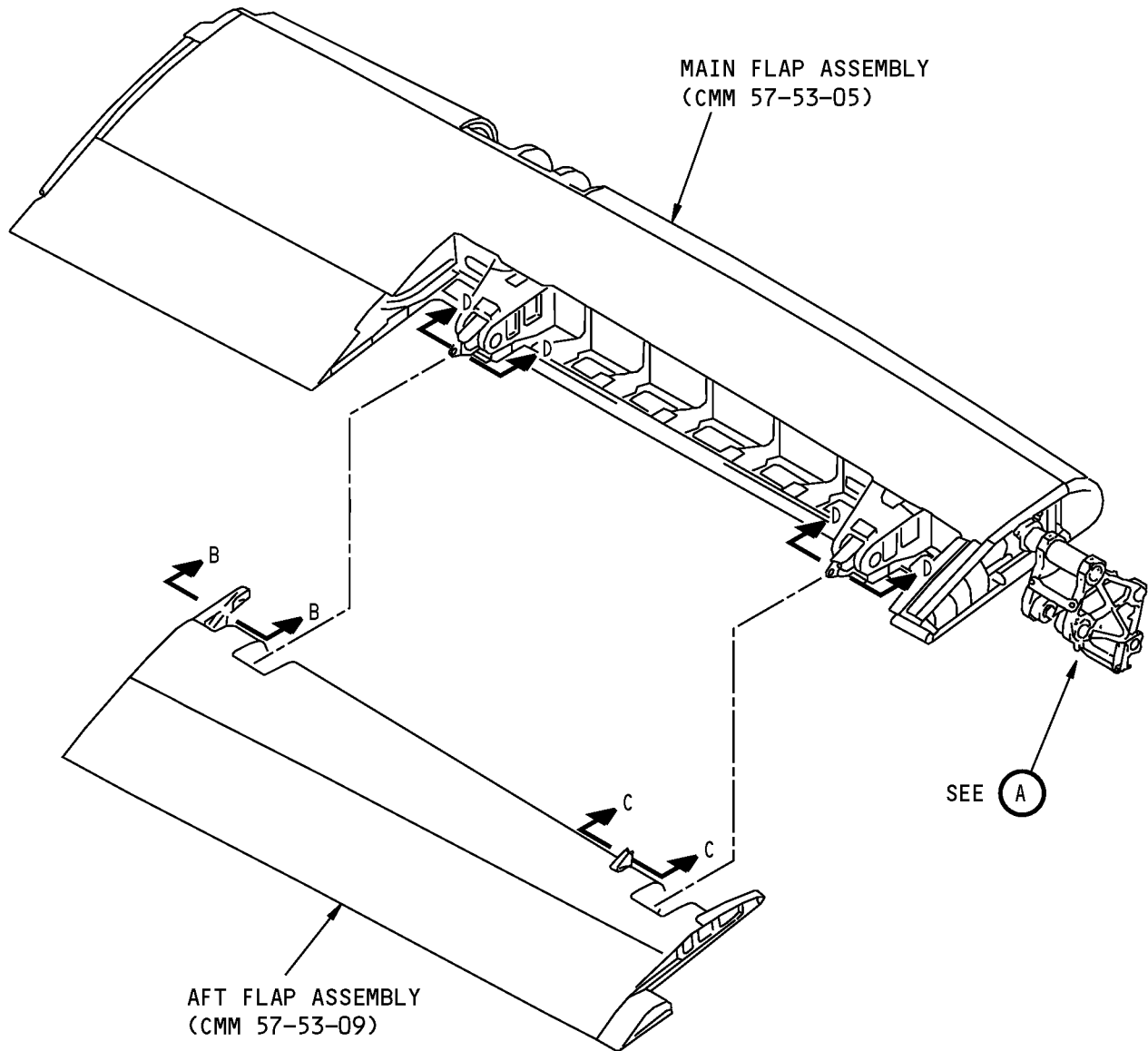
ASSEMBLY

Page 701

Mar 01/2006

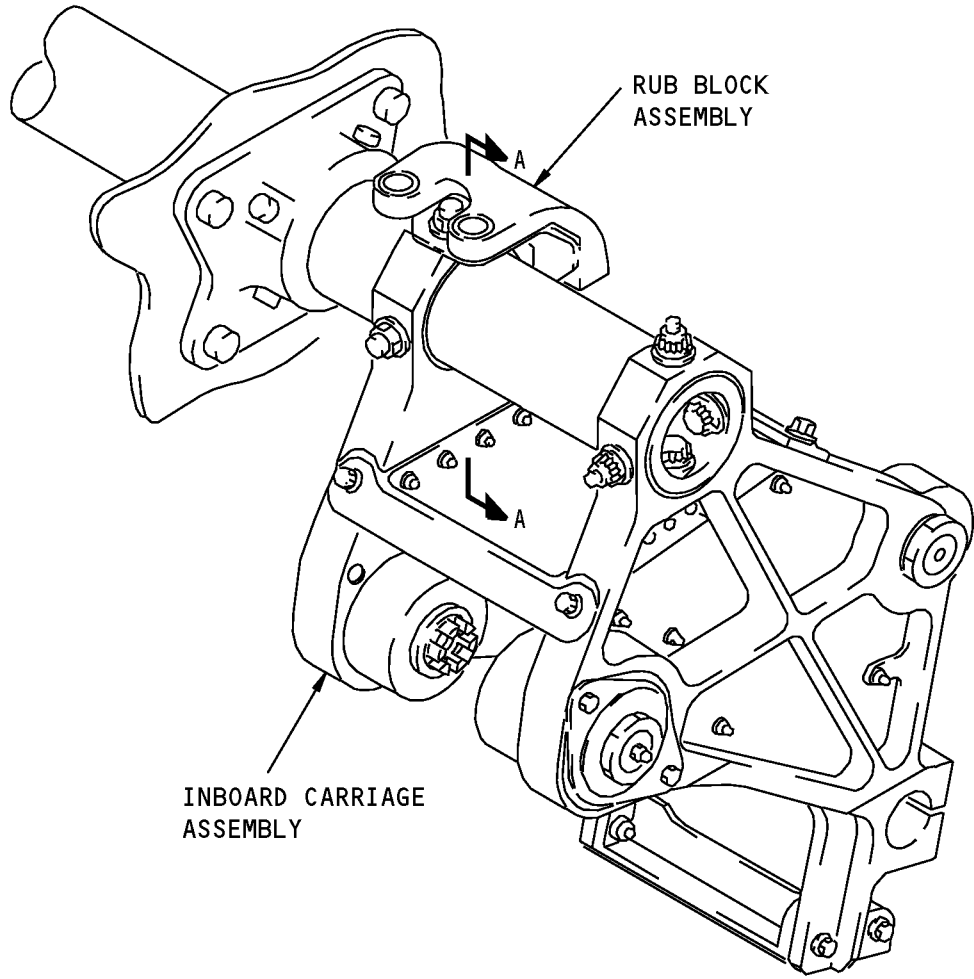
# COMPONENT MAINTENANCE MANUAL

## FITS AND CLEARANCES



Fits and Clearances  
Figure 801 (Sheet 1 of 6)

COMPONENT MAINTENANCE MANUAL

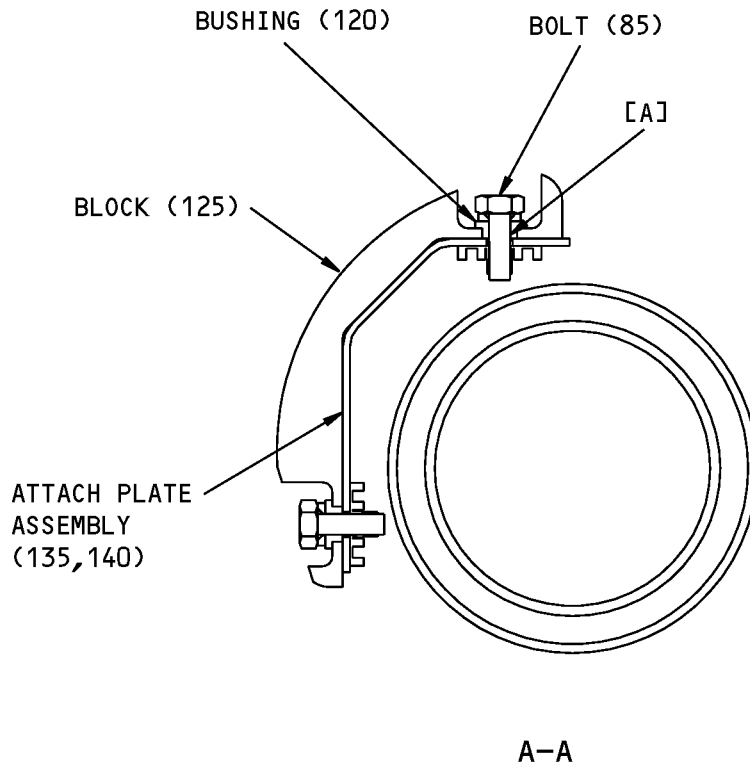


A

Fits and Clearances  
Figure 801 (Sheet 2 of 6)



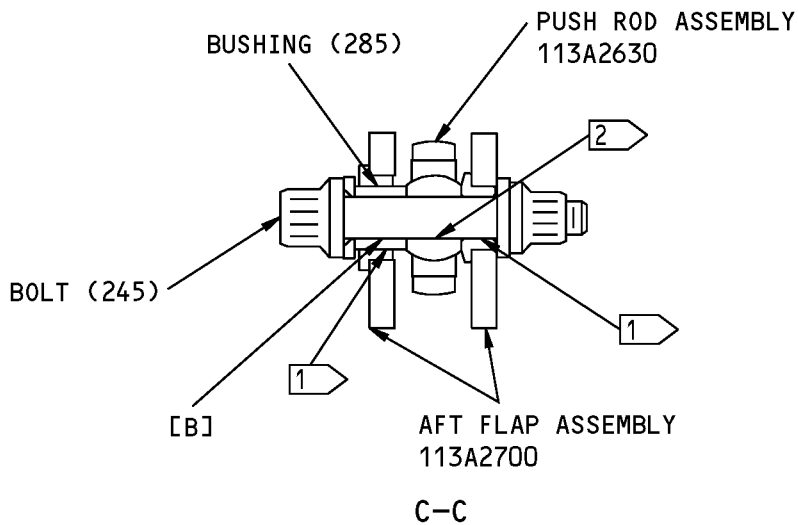
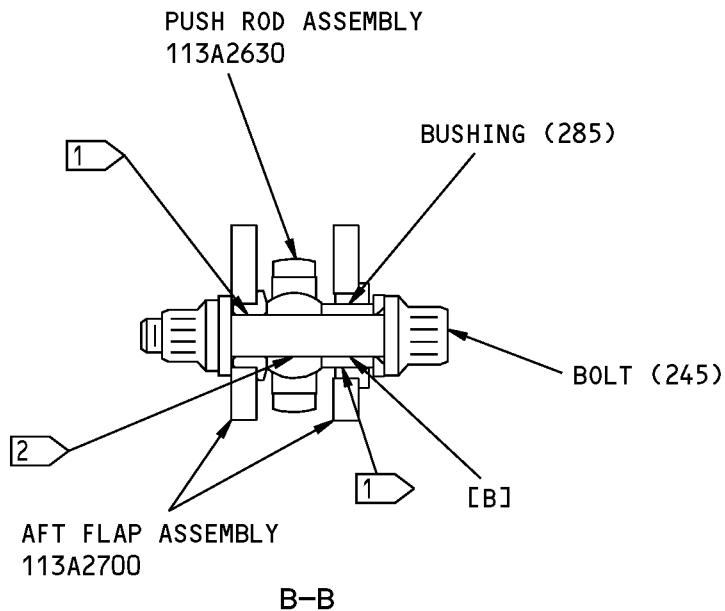
COMPONENT MAINTENANCE MANUAL



Fits and Clearances  
Figure 801 (Sheet 3 of 6)

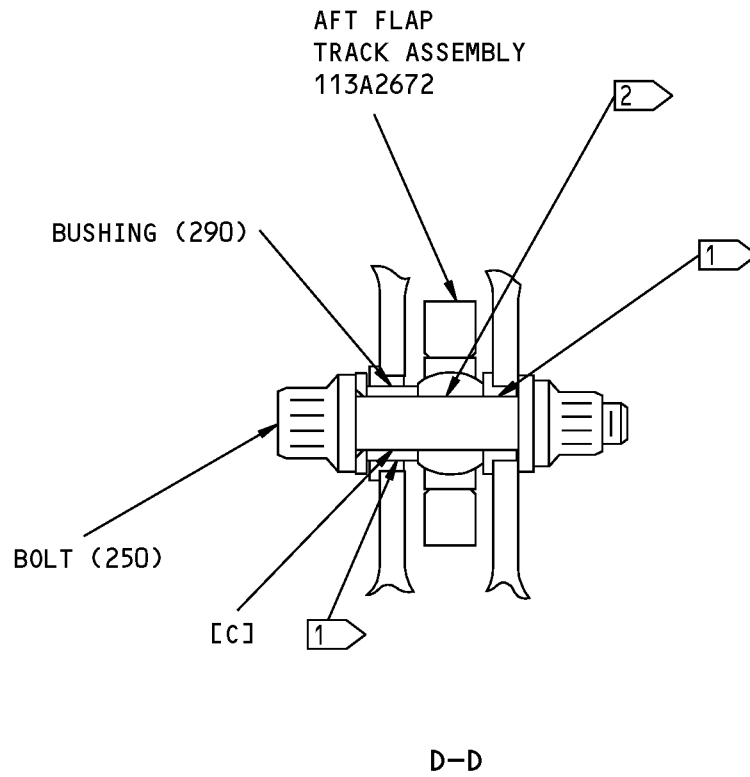


COMPONENT MAINTENANCE MANUAL



Fits and Clearances  
Figure 801 (Sheet 4 of 6)

COMPONENT MAINTENANCE MANUAL



Fits and Clearances  
Figure 801 (Sheet 5 of 6)



## COMPONENT MAINTENANCE MANUAL

REF LETTER	REF IPL		DESIGN DIMENSION*				SERVICE WEAR LIMIT*		
	FIG. 1, MATING ITEM NO.		DIMENSION		ASSEMBLY CLEARANCE		DIMENSION		MAXIMUM CLEARANCE
			MIN	MAX	MIN	MAX	MIN	MAX	
[A]	ID	120 BUSHING	0.1900	0.1915	0.0005	0.0030	0.1870	0.1930	0.0060
	OD	85 BOLT	0.1885	0.1895				0.2520	
[B]	ID	285 BUSHING	0.2500	0.2505	0.0005	0.0020	0.2470	0.2520	0.0050
	OD	245 BOLT	0.2485	0.2495				0.3145	
[C]	ID	290 BUSHING	0.3125	0.3130	0.0005	0.0020	0.3095	0.3145	0.0050
	OD	250 BOLT	0.3110	0.3120					

\* ALL DIMENSIONS ARE IN INCHES

1 SEE CMM 57-53-05

2 SEE CMM 57-53-09

G88392 S00041005402\_V2

Fits and Clearances  
Figure 801 (Sheet 6 of 6)

**57-53-04**  
FITS AND CLEARANCES  
Page 806  
Jul 01/2008



## COMPONENT MAINTENANCE MANUAL

REF IPL		NAME	TORQUE*	
FIG. NO.	ITEM NO.		POUND-INCHES	POUND-FEET
1	280	Nut	100-150	

\* REFER TO SOPM 20-50-01 FOR TORQUE VALUES OF STANDARD FASTENERS.

Torque Table  
Figure 802

**57-53-04**  
FITS AND CLEARANCES  
Page 807  
Mar 01/2006



**COMPONENT MAINTENANCE MANUAL**

**SPECIAL TOOLS, FIXTURES, AND EQUIPMENT**

**(NOT APPLICABLE)**

**57-53-04**

SPECIAL TOOLS, FIXTURES, AND EQUIPMENT

Page 901

Mar 01/2006



## COMPONENT MAINTENANCE MANUAL

### ILLUSTRATED PARTS LIST

#### 1. Introduction

- A. The Illustrated Parts List (IPL) contains an illustration and a list of component parts you can repair or replace. The Illustrated Parts Catalog (IPC) shows how to use the Boeing part number system.
- B. This shows how parts are related: The relation of each item to its next higher assembly (NHA) is shown in the NOMENCLATURE column. Use the indenture system that follows:

1	2	3	4	5	6	7
.	Assembly					
.	Attaching parts for assembly					
.	.	Detail parts for assembly				
.	.	Subassembly				
.	.	Attaching parts for subassembly				
.	.	.	Detail parts for subassembly			
.	.	.	Sub-subassembly			
.	.	.	Attaching parts for subassembly			
.	.	.	.	Details parts for sub-subassembly		
						Detail Installation Parts (Included only if installation parts may be sent to the shop as part of assembly)

- C. Each top assembly is given one use code letter (A, B, C, etc.) in the USAGE CODE column. All subsequent component parts in the list can have one or more of the use code letters to show effectivity to top assemblies. A component part without a use code applies to all top assemblies.
- D. An alphabetical letter is added after the item number for optional parts, parts changed by a Service Bulletin, configuration differences (except left-handed and right-handed parts), last engineering releases, and parts added between item numbers in a sequence. The alphabetical letter will not be shown on the illustration for equivalent parts of the same part number.
- E. Color-coded parts are identified with a single digit alpha following the dash number or with "SP" suffix. If the "SP" suffix is used, it represents consolidation of all color codes applicable for a given usage which are not separately listed. Orders for color-coded parts should include the registry number of the airplane for which the parts are ordered.
- F. If a part number is 15 characters long but will not fit in the part number column, the part number will be displayed with a "~" at the end of the line and will be continued on the next line. The "~" denotes that the part number continues on the next line.
- G. Parts changed by a Service Bulletin are shown by PRE SB XXXX and POST SB XXXX added to the NOMENCLATURE column.
- (1) When a new top assembly is added by a Service Bulletin, PRE SB XXXX and POST SB XXXX will be added at the top assembly level only. The configuration differences at the detail part level are shown by use code letters.
- (2) When the top assembly part number is not changed by the Service Bulletin, PRE SB XXXX and POST SB XXXX will be added at the detail level.
- H. Interchangeable Parts

# 57-53-04

ILLUSTRATED PARTS LIST  
Page 1001  
Nov 01/2008



## COMPONENT MAINTENANCE MANUAL

Optional (OPT)	The part is optional to and interchangeable with other parts that have the same item number.
Replaces, Replaced by and not interchangeable with (REPLACES, REPLACED BY AND NOT INTCHG/W)	The part replaces and is not interchangeable with the initial part.
Replaces, Replaced by (REPLACES, REPLACED BY)	The part replaces and is interchangeable with, or is an alternative to, the initial part.

### VENDOR CODES

Code	Name
06710	LAMSON AND SESSIONS CO THE VALLEY-TODECO 12975 BRADLEY AVENUE SYLMAR, CALIFORNIA 91342-3830 FORMERLY VALLEY BOLT CORP VB0097 IN NORTH HOLLYWOOD, CA
11815	CHERRY AEROSPACE FASTENERS DIV OF TEXTRON 1224 EAST WARNER AVENUE PO BOX 2157 SANTA ANA, CALIFORNIA 92707-0157 FORMERLY IN LOS ANGELES, CALIF , FORMERLY CHERRY FASTENERS TOWNSEND DIV OF TEXTRON INC V71087
15653	ALCOA GLOBAL FASTENERS INC DIV KAYNAR PRODUCTS 800 S STATE COLLEGE BLVD FULLERTON, CALIFORNIA 92831-3001 FORMERLY VK6405 MICRODOT AEROSP LTD; FORMERLY KAYNAR TECH FORMERLY FAIRCHILD FASTENERS KAYNAR DIV
27238	BRISTOL INDUSTRIES 630 EAST LAMBERT ROAD PO BOX 630 BREA, CALIFORNIA 92621-4119
52828	REPUBLIC FASTENER MFG CORP 1300 RANCHO CONEJO BLVD NEWBURY PARK, CALIFORNIA 91320-1405 FORMERLY IN SYLMAR, CALIFORNIA
53551	ALLFAST FASTENING SYSTEMS INC 15200 EAST DON JULIAN ROAD PO BOX 3166 CITY OF INDUSTRY, CALIFORNIA 91745-1001 FORMERLY V0736B FORMERLY ALLFAST INC V5K545

# 57-53-04

ILLUSTRATED PARTS LIST

Page 1002

Jul 01/2009





## COMPONENT MAINTENANCE MANUAL

Code	Name
56878	SPS TECHNOLOGIES INC AEROSPACE AND INDUSTRIAL PRODUCTS DIV 301 HIGHLAND AVE JENKINTOWN, PENNSYLVANIA 19046 FORMERLY STANDARD PRESSED STEEL FORMERLY IN SALT LAKE, UTAH
62554	SIMMONDS MECAERO FASTENERS INC 1734 SEQUOIA AVENUE ORANGE, CALIFORNIA 92668
72962	HARVARD INDUSTRIES INC 3 WERNER WAY SUITE 210 LEBANON, NEW JERSEY 08833 FORMERLY ESNA V7A079 FORMERLY ELASTIC STOP NUT IN UNION, NJ
80539	SPS TECHNOLOGIES INC DIV AERPSOACE - SANTA ANA 2701 SOUTH HARBOR BOULEVARD SANTA ANA, CALIFORNIA 92704-5803 FORMERLY NUTT-SHEL DIV OF SPC WESTERN CO V80539 AND STANDARD PRESSED STEEL WESTERN DIV V17279
97928	Replaced: [V97928] SEE V17446 HUCK INTL by Code: Name and Address below 17446: HUCK INTL INC AEROSPACE FASTENER DIV 900 WATSON CENTER ROAD CARSON, CALIFORNIA 90745-4201 FORMERLY V32134 REXNORD INC; FORMERLY V97928 HUCK INTL
98996	OLYMPIC FASTENING SYSTEMS INC DOWNEY, CALIFORNIA 90241-4986 OBSOLETE RECORD
F0224	SIMMONDS SA FAIRCHILD FASTENERS ST COSME ST COSME EN VAIRAIS F-72580, FRANCE

# 57-53-04

ILLUSTRATED PARTS LIST

Page 1003

Jul 01/2009



## COMPONENT MAINTENANCE MANUAL

### NUMERICAL INDEX

PART NUMBER	AIRLINE PART NUMBER	FIGURE	ITEM	UNITS PER ASSEMBLY
102LH9031-5		1	190	1
102LH90315		1	190	1
102LH9075-82W		1	220	2
109LH9031-6		1	50	4
109LH90315		1	55	4
		1	185	3
109LH90316		1	50	4
113A2002-10		1	5C	RF
113A2002-11		1	1E	RF
113A2002-12		1	5D	RF
113A2002-13		1	1F	RF
113A2002-14		1	5E	RF
113A2002-15		1	1G	RF
113A2002-16		1	5F	RF
113A2002-17		1	1H	RF
113A2002-18		1	5G	RF
113A2002-19		1	1J	RF
113A2002-20		1	5H	RF
113A2002-201		1	1P	RF
113A2002-202		1	5N	RF
113A2002-203		1	1Q	RF
113A2002-204		1	5P	RF
113A2002-205		1	1S	RF
113A2002-206		1	5R	RF
113A2002-207		1	1T	RF
113A2002-208		1	5S	RF
113A2002-21		1	1K	RF
113A2002-22		1	5J	RF
113A2002-23		1	1L	RF
113A2002-24		1	5K	RF
113A2002-25		1	1M	RF
113A2002-26		1	5L	RF
113A2002-27		1	1N	RF
113A2002-28		1	5M	RF

# 57-53-04

ILLUSTRATED PARTS LIST

Page 1004

Jul 01/2009



## COMPONENT MAINTENANCE MANUAL

PART NUMBER	AIRLINE PART NUMBER	FIGURE	ITEM	UNITS PER ASSEMBLY
113A2002-29		1	1R	RF
113A2002-30		1	5Q	RF
113A2002-31		1	1U	RF
113A2002-32		1	5T	RF
113A2002-7		1	1C	RF
113A2002-8		1	5B	RF
113A2002-9		1	1D	RF
113A2100-201		1	305J	1
113A2100-202		1	310J	1
113A2100-203		1	305K	1
113A2100-204		1	310K	1
113A2100-205		1	305M	1
113A2100-206		1	310M	1
113A2100-207		1	305N	1
113A2100-208		1	310N	1
113A2100-41		1	305B	1
113A2100-42		1	310B	1
113A2100-43		1	305C	1
113A2100-44		1	310C	1
113A2100-51		1	305D	1
113A2100-52		1	310D	1
113A2100-53		1	305E	1
113A2100-54		1	310E	1
113A2100-55		1	305F	1
113A2100-56		1	310F	1
113A2100-57		1	305G	1
113A2100-58		1	310G	1
113A2100-59		1	305H	1
113A2100-60		1	310H	1
113A2100-61		1	305L	1
113A2100-62		1	310L	1
113A2100-63		1	305P	1
113A2100-64		1	310P	1
113A2234-1		1	235	1
113A2234-201		1	235A	1

# 57-53-04

ILLUSTRATED PARTS LIST

Page 1005

Jul 01/2009



## COMPONENT MAINTENANCE MANUAL

PART NUMBER	AIRLINE PART NUMBER	FIGURE	ITEM	UNITS PER ASSEMBLY
113A2236-5		1	90	4
113A2237-1		1	135	1
113A2237-2		1	140	1
113A2237-3		1	155	1
113A2237-4		1	160	1
113A2238-1		1	230	1
113A2700-1		1	295A	1
113A2700-15		1	295	1
113A2700-16		1	300	1
113A2700-17		1	295B	1
113A2700-18		1	300B	1
113A2700-2		1	300A	1
113A2700-21		1	295C	1
113A2700-22		1	300C	1
113A2700-23		1	295D	1
113A2700-24		1	300D	1
113A2700-25		1	295E	1
113A2700-26		1	300E	1
113A2800-10		1	200F	1
113A2800-201		1	195D	1
113A2800-202		1	200D	1
113A2800-203		1	195E	1
113A2800-204		1	200E	1
113A2800-205		1	195G	1
113A2800-206		1	200G	1
113A2800-3		1	195A	1
113A2800-4		1	200A	1
113A2800-5		1	195B	1
113A2800-6		1	200B	1
113A2800-7		1	195C	1
113A2800-8		1	200C	1
113A2800-9		1	195F	1
113A2850-1		1	60	1
113A2850-2		1	65	1
113A2850-201		1	60C	1

# 57-53-04

ILLUSTRATED PARTS LIST

Page 1006

Jul 01/2009



## COMPONENT MAINTENANCE MANUAL

PART NUMBER	AIRLINE PART NUMBER	FIGURE	ITEM	UNITS PER ASSEMBLY
113A2850-202		1	65C	1
113A2850-203		1	60E	1
113A2850-204		1	65E	1
113A2850-3		1	60A	1
113A2850-4		1	65A	1
113A2850-5		1	60B	1
113A2850-6		1	65B	1
113A2850-7		1	60D	1
113A2850-8		1	65D	1
113A2881-3		1	110	1
113A2881-4		1	115	1
113A2881-7		1	125	1
113A2881-8		1	130	1
67832AS5		1	55	4
		1	185	3
67832AS524		1	55	4
		1	185	3
67832AS6		1	50	4
67832AS624		1	50	4
67832CD524		1	190	1
AF5141-3C3		1	145	8
BACB28AK04-031		1	285	2
BACB28AK05-031		1	290	2
BACB28X3P009		1	120	4
BACB30LE5K12		1	165A	3
BACB30LE5K13		1	165	3
		1	167	1
BACB30MR4AD15		1	245A	2
BACB30MR4DK15		1	245	2
		1	245B	2
BACB30MR5A16		1	20B	2
BACB30MR5AD16		1	250A	2
BACB30MR5DK16		1	250	2
		1	250B	2
BACB30MR5K15		1	20A	2

# 57-53-04

ILLUSTRATED PARTS LIST

Page 1007

Jul 01/2009



## COMPONENT MAINTENANCE MANUAL

PART NUMBER	AIRLINE PART NUMBER	FIGURE	ITEM	UNITS PER ASSEMBLY
BACB30MR5K16		1	20	2
		1	20C	2
BACB30NM3K4		1	85	4
BACB30NN5K16		1	25	2
BACB30NT2K3		1	210	2
BACB30US6K18		1	10	2
BACB30US6K20		1	15	2
BACB30UW7K11		1	80	1
BACB30UW7K12		1	75	3
BACF33C102-075F		1	70	2
BACF3H04DA004AN		1	225	2
BACF3H08JM008AN		1	205	1
BACN10HR5CD		1	190	1
BACN10HR5CS		1	55	4
		1	185	3
BACN10HR6CS		1	50	4
BACN10JC08CD		1	220	2
BACN10YF31CM		1	150	4
BACN10YR7CM		1	105	4
BACN11N4CS		1	275	2
BACN11N5CS		1	280	2
BACP18BC02A06P		1	240	4
BACR15DR3AC3		1	145	8
BACW10BP3ACU		1	100	4
BACW10BP4ACU		1	175	2
		1	255	2
BACW10BP4DP		1	265	2
BACW10BP5ACU		1	170	2
		1	255A	2
		1	260	2
BACW10BP5APU		1	40	2
BACW10BP5DP		1	45	2
		1	270	2
BACW10BP6APU		1	35	4
BACW10BP6CD		1	30	4

# 57-53-04

ILLUSTRATED PARTS LIST

Page 1008

Jul 01/2009



## COMPONENT MAINTENANCE MANUAL

PART NUMBER	AIRLINE PART NUMBER	FIGURE	ITEM	UNITS PER ASSEMBLY
BACW10CT5CU		1	215	2
BACW10EG5CU		1	215A	2
BH003026CS		1	50	4
BH00303-5		1	55	4
		1	185	3
BH00303-6		1	50	4
BH003035		1	55	4
		1	185	3
BH003036		1	50	4
BH00303CM5		1	190	1
		1	190	1
BMN10HRCWD3-5		1	190	1
BMN10HRRCPD3-5		1	55	4
		1	185	3
BMN5024CPD3-5		1	55	4
		1	185	3
BMN5024CPD3-6		1	50	4
BMN5024CPD35		1	55	4
		1	185	3
BMN5024CPD36		1	50	4
BMN5024CWD35		1	190	1
BRH10C08D		1	220	2
CCR264CS3-3IT		1	145	8
CR5908		1	50	4
CR59085		1	55	4
		1	185	3
CR60305		1	190	1
H39953		1	50	4
		1	55	4
		1	185	3
H39953-5		1	55	4
		1	185	3
H39953-6		1	50	4
H51560-5		1	190	1
H51650-08BAC		1	220	2

# 57-53-04

ILLUSTRATED PARTS LIST

Page 1009

Jul 01/2009



## COMPONENT MAINTENANCE MANUAL

PART NUMBER	AIRLINE PART NUMBER	FIGURE	ITEM	UNITS PER ASSEMBLY
NAS1149E0563R		1	180	3
NAS1149E0763R		1	95	4
NS202486-82		1	220	2
PLH57CM		1	105	4
		1	105	4
RV541A3C3		1	145	8
SL705095		1	55	4
		1	185	3
SL705096		1	50	4
SL7059C624		1	50	4
SL7108C5		1	190	1
SL7108C524		1	190	1
T6C832JCD		1	220	2
VCU0005D5		1	190	1

# 57-53-04

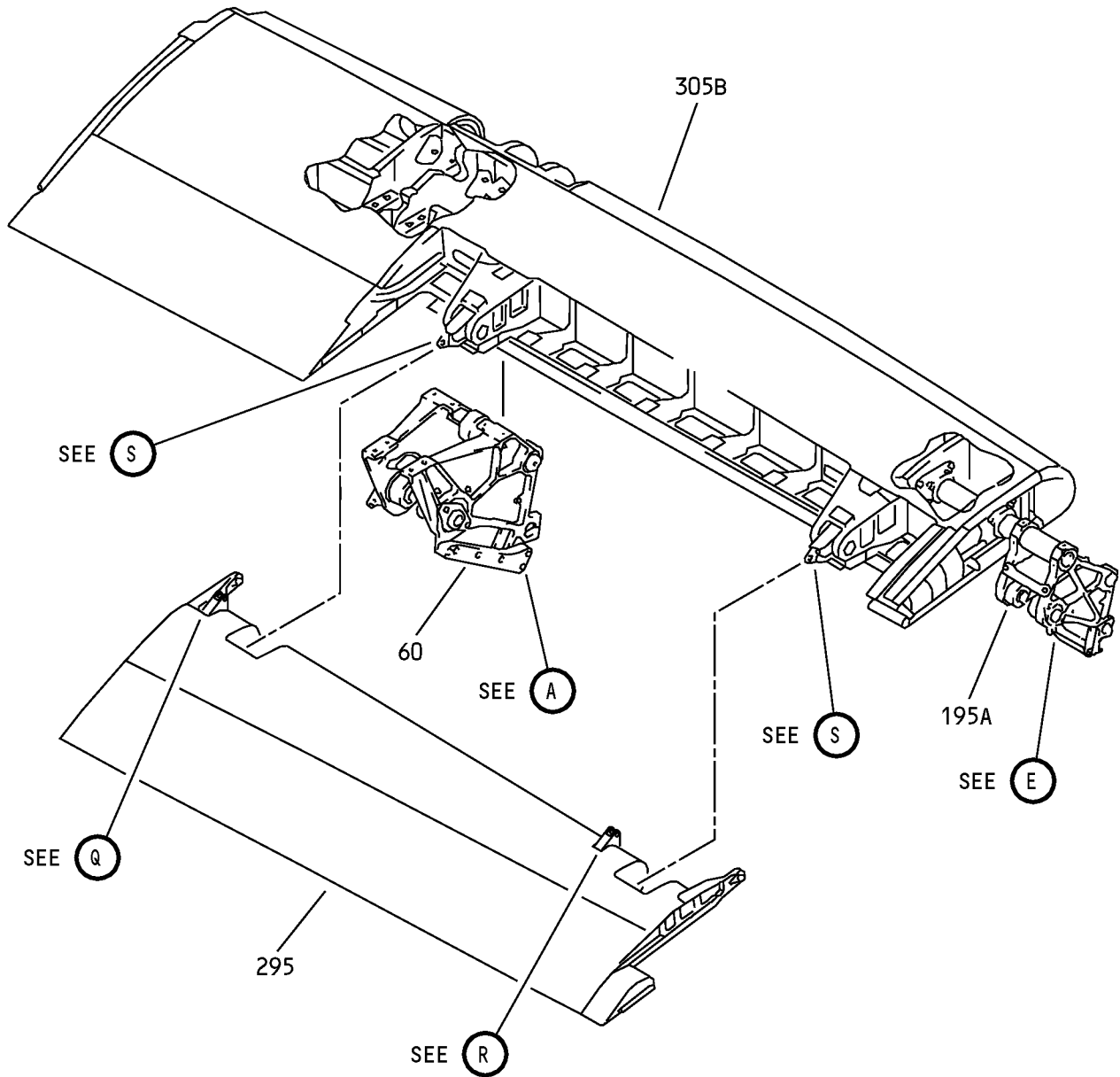
ILLUSTRATED PARTS LIST

Page 1010

Jul 01/2009



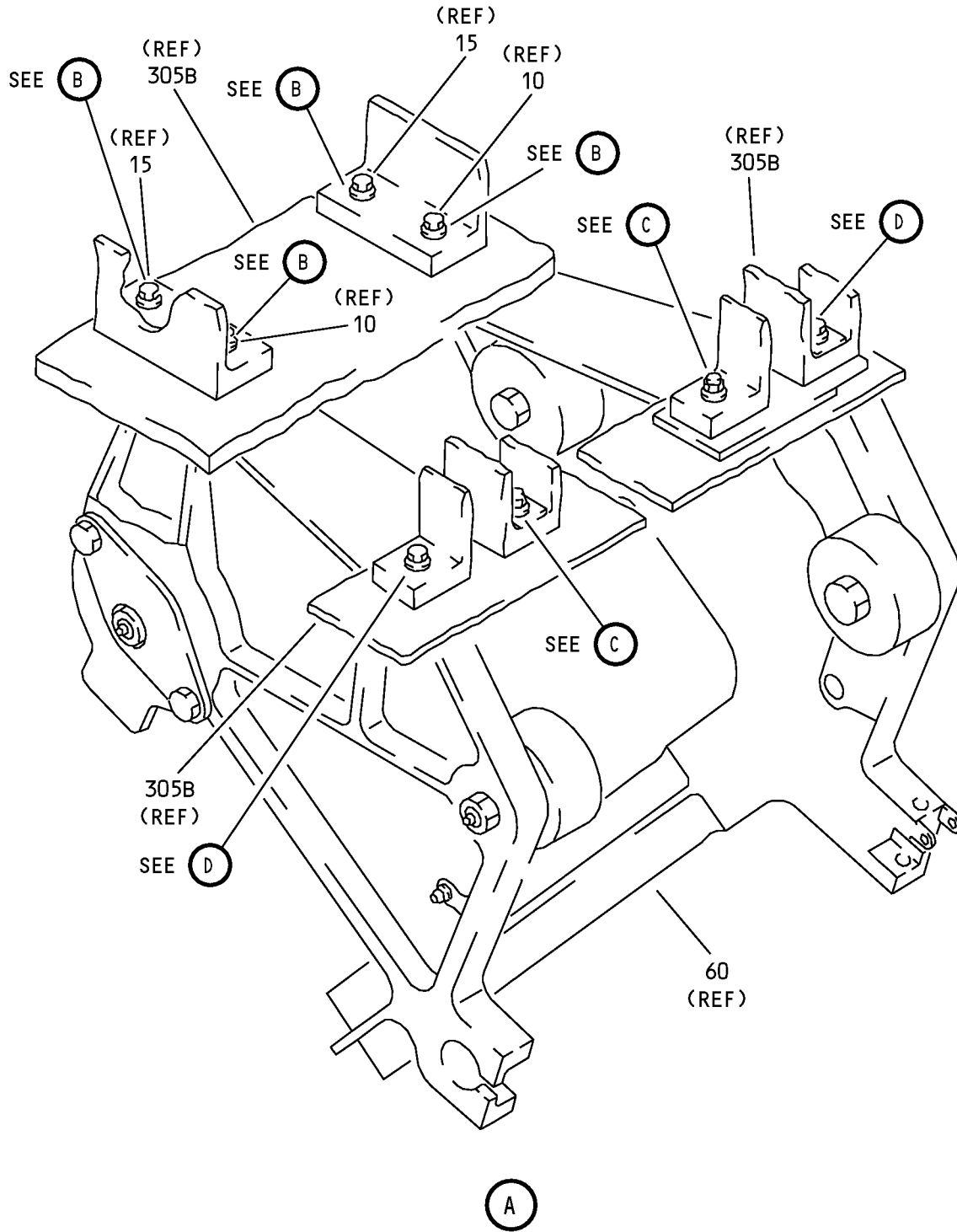
COMPONENT MAINTENANCE MANUAL



Inboard Flap - Flap Assembly  
IPL Figure 1 (Sheet 1 of 9)

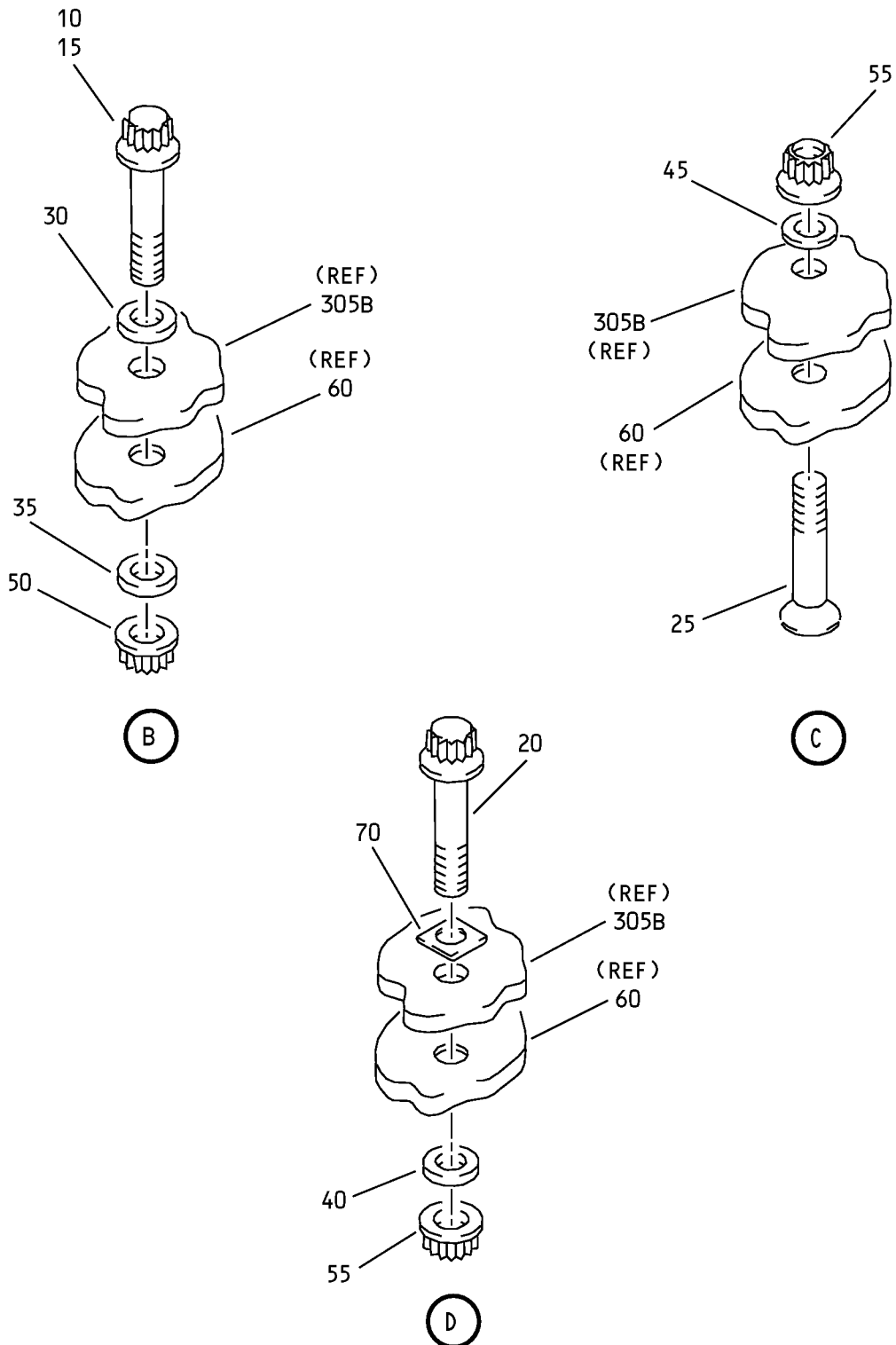
**57-53-04**  
ILLUSTRATED PARTS LIST  
Page 1011  
Jul 01/2009

COMPONENT MAINTENANCE MANUAL



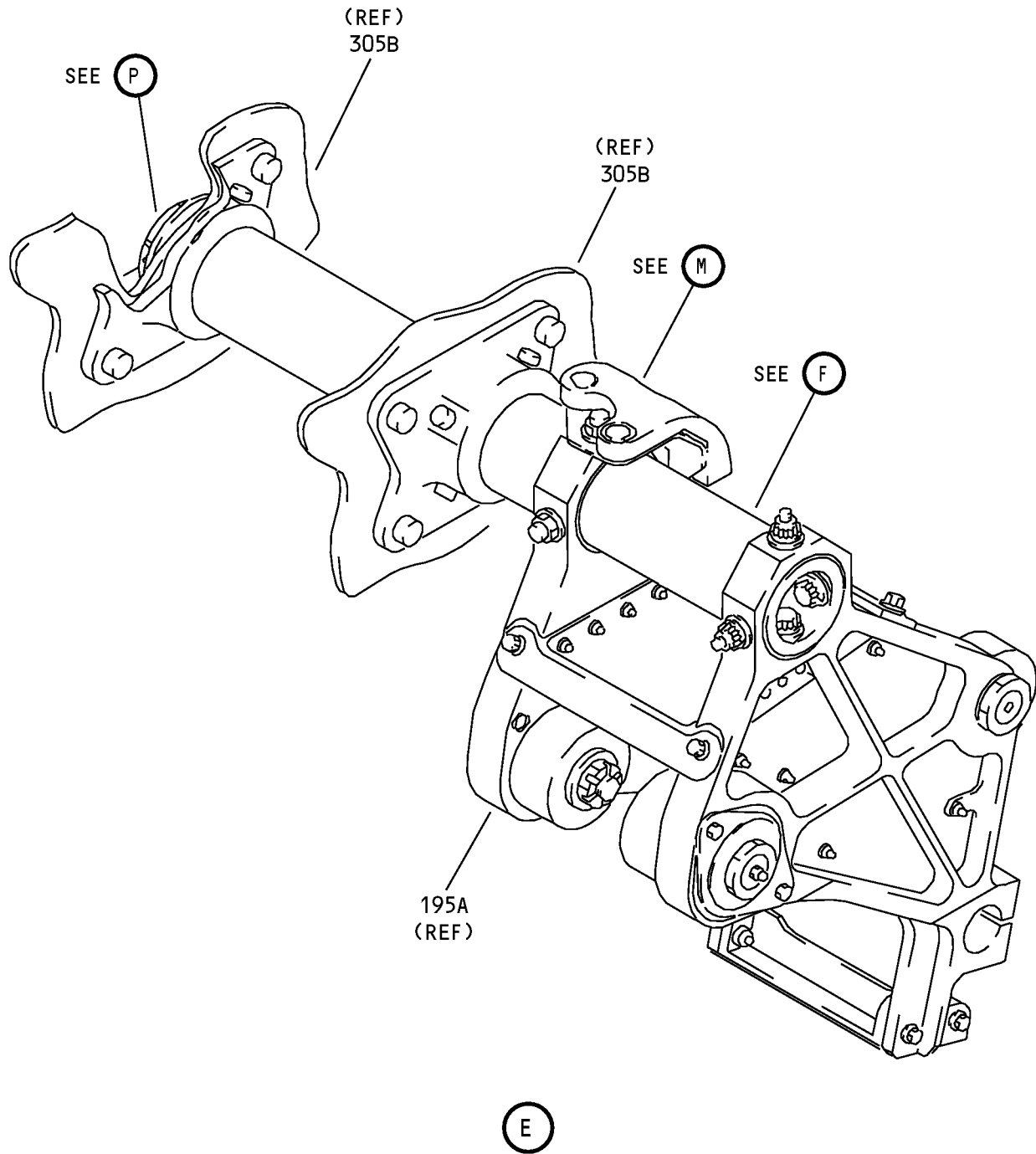
Inboard Flap - Flap Assembly  
IPL Figure 1 (Sheet 2 of 9)

COMPONENT MAINTENANCE MANUAL



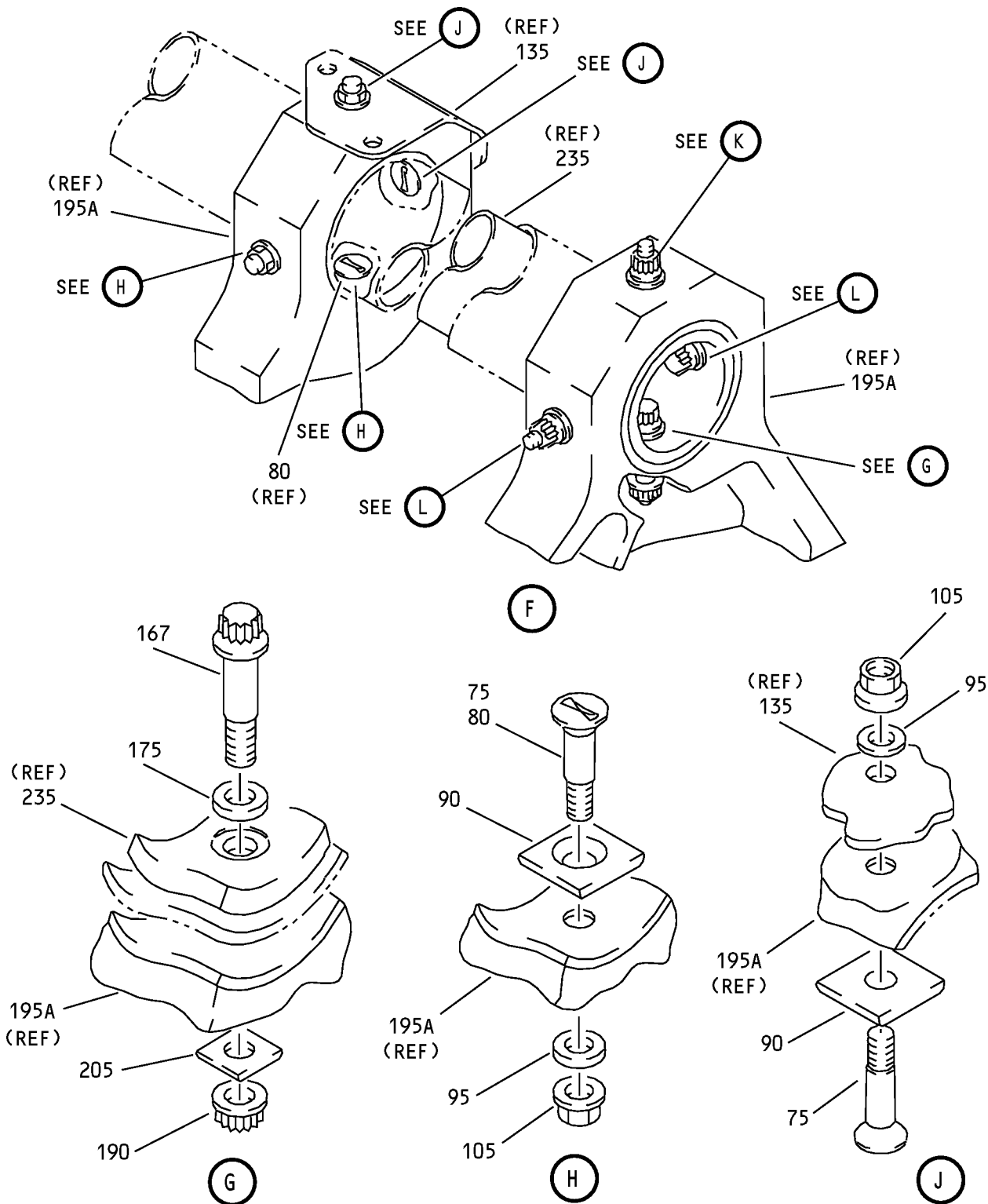
Inboard Flap - Flap Assembly  
IPL Figure 1 (Sheet 3 of 9)

COMPONENT MAINTENANCE MANUAL



Inboard Flap - Flap Assembly  
IPL Figure 1 (Sheet 4 of 9)

COMPONENT MAINTENANCE MANUAL



Inboard Flap - Flap Assembly  
IPL Figure 1 (Sheet 5 of 9)

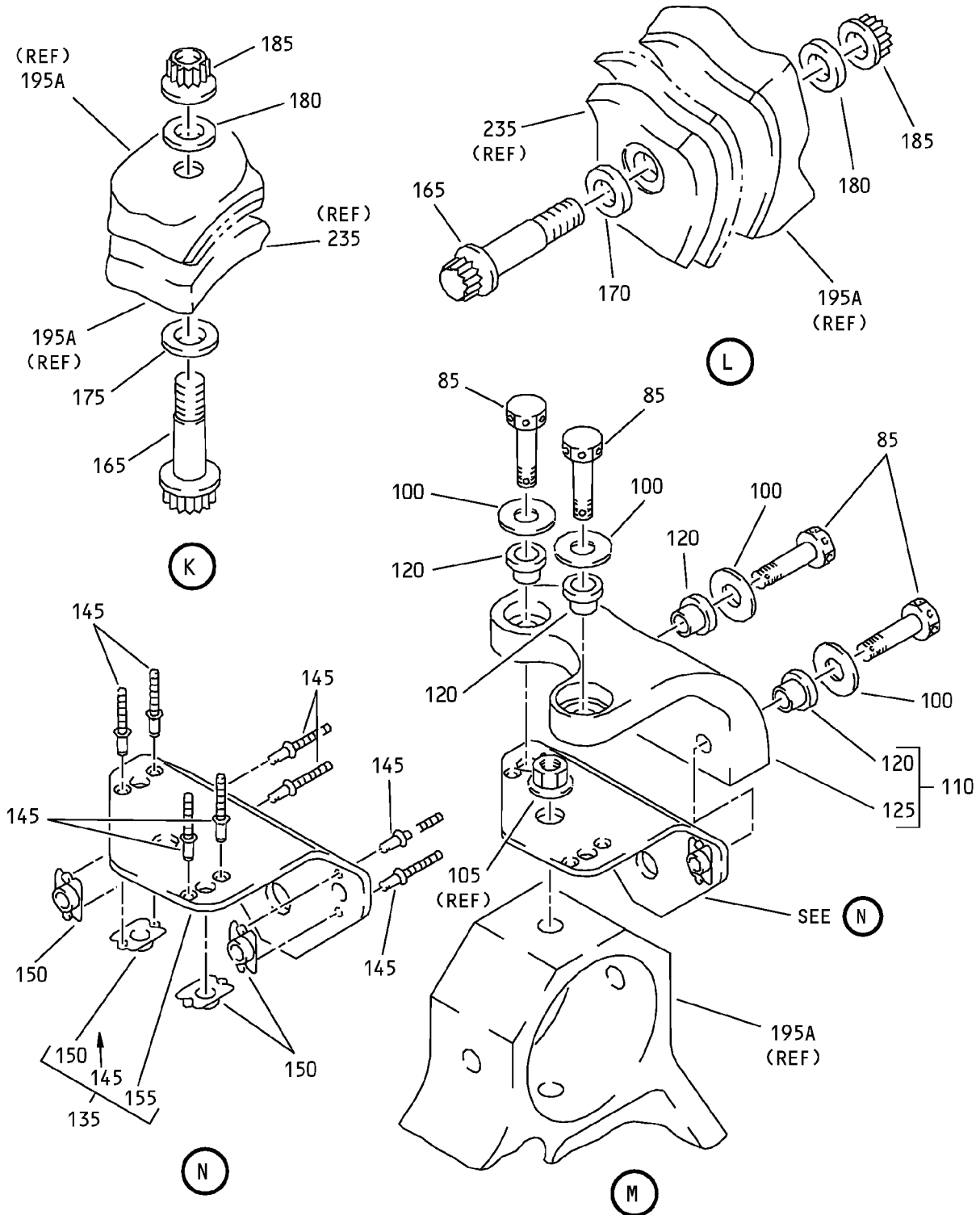
**57-53-04**

ILLUSTRATED PARTS LIST

Page 1015

Jul 01/2009

COMPONENT MAINTENANCE MANUAL



Inboard Flap - Flap Assembly  
IPL Figure 1 (Sheet 6 of 9)

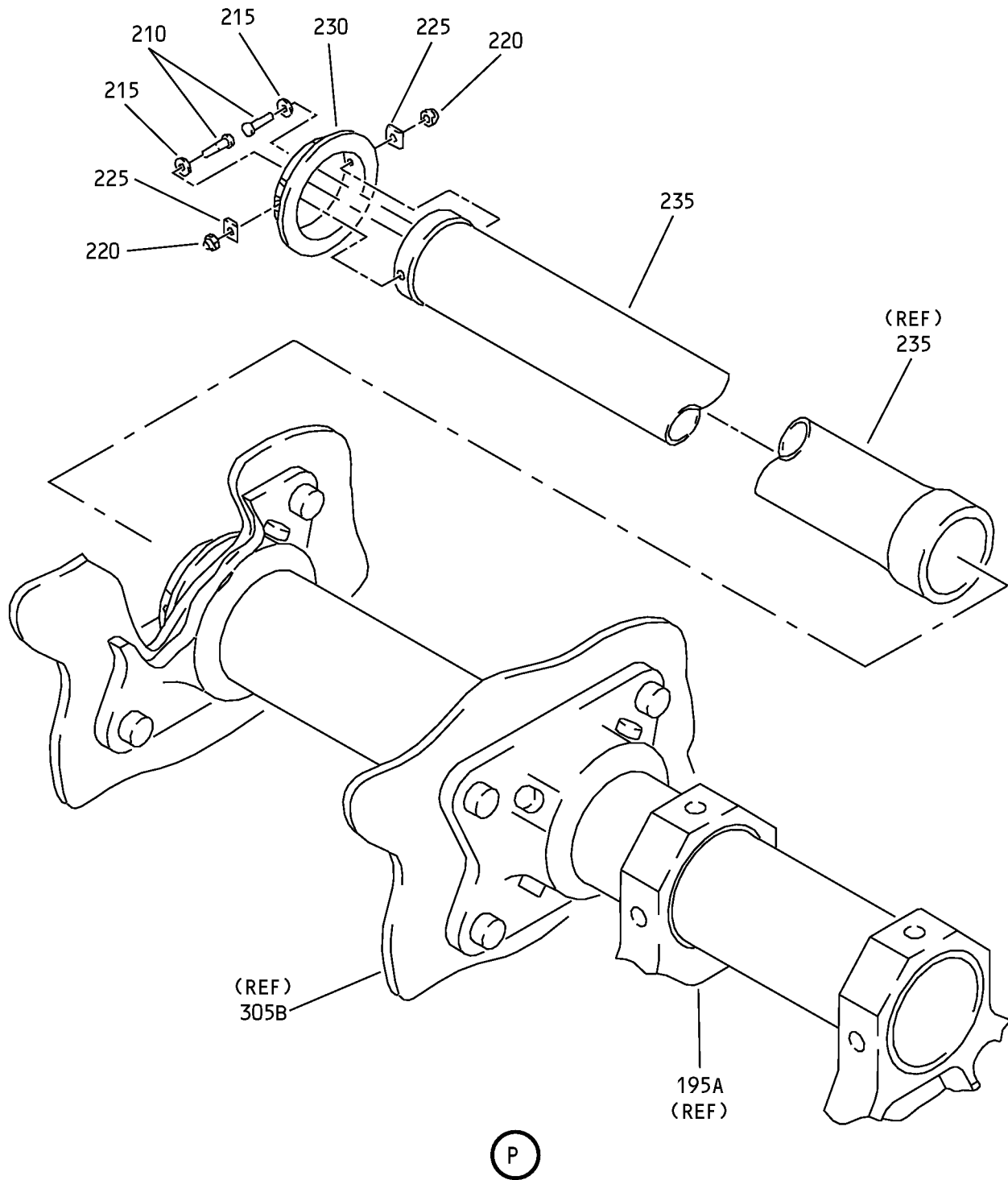
**57-53-04**

ILLUSTRATED PARTS LIST

Page 1016

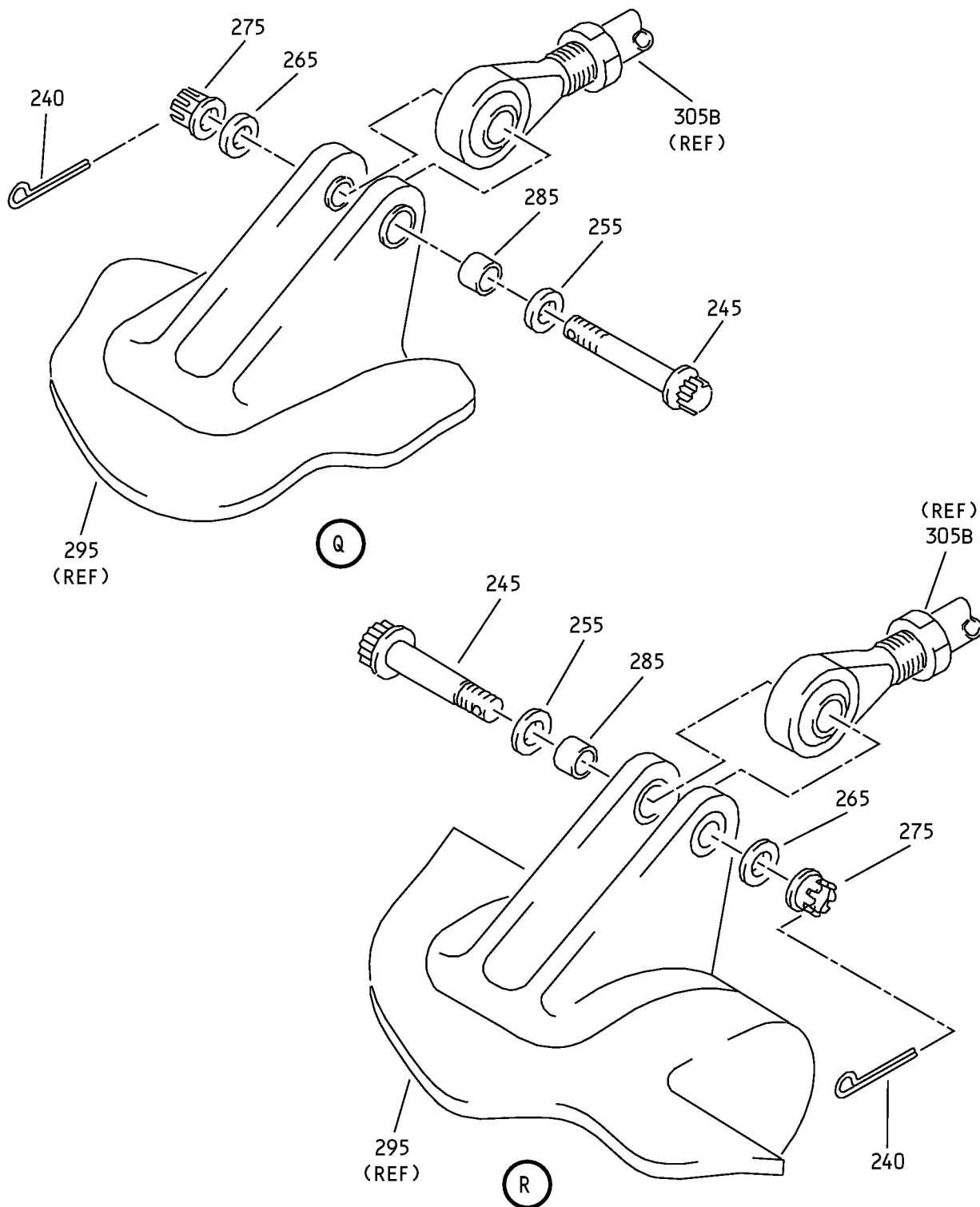
Jul 01/2009

COMPONENT MAINTENANCE MANUAL



Inboard Flap - Flap Assembly  
IPL Figure 1 (Sheet 7 of 9)

COMPONENT MAINTENANCE MANUAL



Inboard Flap - Flap Assembly  
IPL Figure 1 (Sheet 8 of 9)

**57-53-04**

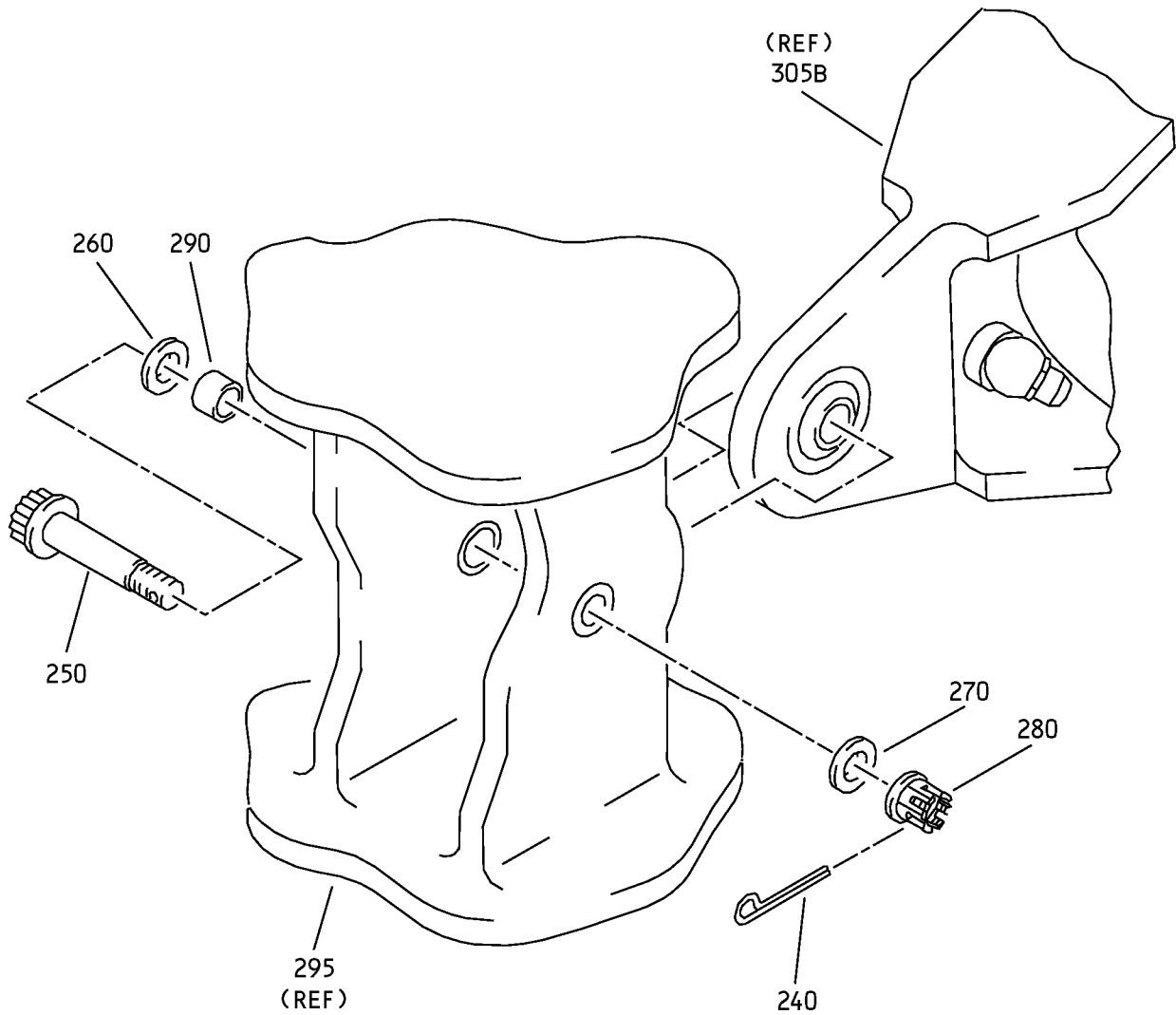
ILLUSTRATED PARTS LIST

Page 1018

Jul 01/2009



COMPONENT MAINTENANCE MANUAL



S

Inboard Flap - Flap Assembly  
IPL Figure 1 (Sheet 9 of 9)

**57-53-04**

ILLUSTRATED PARTS LIST

Page 1019

Jul 01/2009



## COMPONENT MAINTENANCE MANUAL

FIG/ ITEM	PART NUMBER	AIRLINE PART NUMBER	NOMENCLATURE							USAGE CODE	UNITS PER ASSY
			1	2	3	4	5	6	7		
1-											
-1A	113A2002-3										
-1B	113A2002-5										
-1C	113A2002-7								E	RF	
-1D	113A2002-9								F	RF	
-1E	113A2002-11								A	RF	
-1F	113A2002-13								C	RF	
-1G	113A2002-15								J	RF	
-1H	113A2002-17								L	RF	
-1J	113A2002-19								N	RF	
-1K	113A2002-21								Q	RF	
-1L	113A2002-23								S	RF	
-1M	113A2002-25								U	RF	
-1N	113A2002-27								W	RF	
-1P	113A2002-201								Y	RF	
-1Q	113A2002-203								AA	RF	
-1R	113A2002-29								AC	RF	
-1S	113A2002-205								AE	RF	
-1T	113A2002-207								AG	RF	
-1U	113A2002-31								AJ	RF	
-5	113A2002-4										
-5A	113A2002-6										
-5B	113A2002-8								G	RF	
-5C	113A2002-10								H	RF	
-5D	113A2002-12								B	RF	
-5E	113A2002-14								D	RF	
-5F	113A2002-16								K	RF	
-5G	113A2002-18								M	RF	
-5H	113A2002-20								P	RF	
-5J	113A2002-22								R	RF	
-5K	113A2002-24								T	RF	
-5L	113A2002-26								V	RF	

-Item not Illustrated

# 57-53-04

ILLUSTRATED PARTS LIST

Page 1020

Jul 01/2009



## COMPONENT MAINTENANCE MANUAL

FIG/ ITEM	PART NUMBER	AIRLINE PART NUMBER	NOMENCLATURE							USAGE CODE	UNITS PER ASSY
			1	2	3	4	5	6	7		
1-											
-5M	113A2002-28									X	RF
-5N	113A2002-202									Z	RF
-5P	113A2002-204									AB	RF
-5Q	113A2002-30									AD	RF
-5R	113A2002-206									AF	RF
I -5S	113A2002-208									AH	RF
I -5T	113A2002-32									AK	RF
10	BACB30US6K18										2
15	BACB30US6K20										2
20	BACB30MR5K16									A-P	2
-20A	BACB30MR5K15									Q-V	2
I -20B	BACB30MR5A16									W-AK	2
											(OPT ITEM 20C)
I -20C	BACB30MR5K16									W-AK	2
											(OPT ITEM 20B)
25	BACB30NN5K16										2
30	BACW10BP6CD										4
35	BACW10BP6APU										4
40	BACW10BP5APU										2
45	BACW10BP5DP										2
50	H39953-6										4
											. NUT
											(V15653)
											(SPEC BACN10HR6CS)
											(OPT 109LH9031-6 (V72962))
											(OPT 67832AS624 (V56878))
											(OPT BMN5024CPD3-6 (V97928))
											(OPT BH00303-6 (V27238))
											(OPT SL7059C624 (V11815))
											(OPT BH003036 (V27238))
											(OPT BMN5024CPD36 (V97928))
											(OPT CR5908 (V62554))
											(OPT H39953 (V15653))
											(OPT SL705096 (V11815))
											(OPT 109LH90316 (V72962))
											(OPT 67832AS6 (V56878))
											(OPT BH003026CS (V27238))

-Item not Illustrated

# 57-53-04

ILLUSTRATED PARTS LIST

Page 1021

Jul 01/2009



## COMPONENT MAINTENANCE MANUAL

FIG/ ITEM	PART NUMBER	AIRLINE PART NUMBER	NOMENCLATURE							USAGE CODE	UNITS PER ASSY	
			1	2	3	4	5	6	7			
1- 55	H39953-5		.	NUT (V15653) (SPEC BACN10HR5CS) (OPT 67832AS524 (V56878)) (OPT BMN5024CPD3-5 (V97928)) (OPT BH00303-5 (V27238)) (OPT BH003035 (V27238)) (OPT BMN5024CPD35 (V97928)) (OPT CR59085 (V62554)) (OPT H39953 (V15653)) (OPT SL705095 (V11815)) (OPT 109LH90315 (V72962)) (OPT 67832AS5 (V56878)) (OPT BMN10HRRCPD3-5 (V97928))								4
60	113A2850-1		.	CARRIAGE ASSY-OUTBD (REF CMM 27-55-72)						A, C, E, F, J, L, N, Q, U	1	
-60A	113A2850-3		.	CARRIAGE ASSY-OUTBD (REF CMM 27-55-72)						S	1	
-60B	113A2850-5		.	CARRIAGE ASSY-OUTBD (REF CMM 27-55-72)						W	1	
-60C	113A2850-201		.	CARRIAGE ASSY-OUTBD (REF CMM 27-55-72)						Y, AA	1	
█ -60D	113A2850-7		.	CARRIAGE ASSY-OUTBD (REF CMM 27-55-72)						AC, AJ	1	
█ -60E	113A2850-203		.	CARRIAGE ASSY-OUTBD (REF CMM 27-55-72)						AE, AG	1	
-65	113A2850-2		.	CARRIAGE ASSY-OUTBD (REF CMM 27-55-72)						B, D, G, H, K, M, P, R, V	1	
-65A	113A2850-4		.	CARRIAGE ASSY-OUTBD (REF CMM 27-55-72)						T	1	
-65B	113A2850-6		.	CARRIAGE ASSY-OUTBD (REF CMM 27-55-72)						X	1	
-65C	113A2850-202		.	CARRIAGE ASSY-OUTBD (REF CMM 27-55-72)						Z, AB	1	
█ -65D	113A2850-8		.	CARRIAGE ASSY-OUTBD (REF CMM 27-55-72)						AD, AK	1	
█ -65E	113A2850-204		.	CARRIAGE ASSY-OUTBD (REF CMM 27-55-72)						AF, AH	1	
70	BACF33C102-075F		.	FILLER							2	

-Item not Illustrated

# 57-53-04

ILLUSTRATED PARTS LIST

Page 1022

Jul 01/2009



## COMPONENT MAINTENANCE MANUAL

FIG/ ITEM	PART NUMBER	AIRLINE PART NUMBER	NOMENCLATURE							USAGE CODE	UNITS PER ASSY		
			1	2	3	4	5	6	7				
1-													
75	BACB30UW7K12		.	B	O	L	T				3		
80	BACB30UW7K11		.	B	O	L	T				1		
85	BACB30NM3K4		.	B	O	L	T				4		
90	113A2236-5		.	S	P	A	C	E	R		4		
95	NAS1149E0763R		.	W	A	S	H	E	R		4		
100	BACW10BP3ACU		.	W	A	S	H	E	R		4		
105	PLH57CM		.	N	U	T					4		
				(V	F	0	2	2	4)				
				(S	P	E	C		B	A	C	N	1
				(O	P	T		P	L	H	5	7	C
				(V	6	2	5	5	4))				
110	113A2881-3		.	B	L	O	C	K		A	S	S	Y
				-R	U	B				A, C, E, F, J, L, N, Q, S, U, W, YAA, AC, AE, AG, AJ	1		
-115	113A2881-4		.	B	L	O	C	K		A	S	S	Y
				-R	U	B				B, D, G, H, K, M, P, R, T, V, X, ZAB, AD, AF, AH, AK	1		
120	BACB28X3P009		.	.	B	U	S	H	I	N	G		4
125	113A2881-7		.	.	B	L	O	C	K				1
										A, C, E, F, J, L, N, Q, S, U, W, YAA, AC, AE, AG, AJ			
-130	113A2881-8		.	.	B	L	O	C	K				1
										B, D, G, H, K, M, P, R, T, V, X, ZAB, AD, AF, AH, AK			

-Item not Illustrated

**57-53-04**

ILLUSTRATED PARTS LIST

Page 1023

Jul 01/2009



## COMPONENT MAINTENANCE MANUAL

FIG/ ITEM	PART NUMBER	AIRLINE PART NUMBER	NOMENCLATURE	USAGE CODE	UNITS PER ASSY
1-					
135	113A2237-1		. PLATE ASSY-ATTACH	A, C, E, F, J, L, N, Q, S, U, W, YAA, AC, AE, AG, AJ	1
-140	113A2237-2		. PLATE ASSY-ATTACH	B, D, G, H, K, M, P, R, T, V, X, ZAB, AD, AF, AH, AK	1
145	AF5141-3C3		. . RIVET (V53551) (SPEC BACR15DR3AC3) (OPT CCR264CS3-3IT (V11815)) (OPT RV541A3C3 (V98996))		8
150	BACN10YF31CM		. . NUTPLATE		4
155	113A2237-3		. . PLATE	A, C, E, F, J, L, N, Q, S, U, W, YAA, AC, AE, AG, AJ	1
-160	113A2237-4		. . PLATE	B, D, G, H, K, M, P, R, T, V, X, ZAB, AD, AF, AH, AK	1
165	BACB30LE5K13		. BOLT	A-T	3
-165A	BACB30LE5K12		. BOLT	U-AK	3
167	BACB30LE5K13		. BOLT		1
170	BACW10BP5ACU		. WASHER		2
175	BACW10BP4ACU		. WASHER		2
180	NAS1149E0563R		. WASHER		3

-Item not Illustrated

**57-53-04**

ILLUSTRATED PARTS LIST

Page 1024

Jul 01/2009



## COMPONENT MAINTENANCE MANUAL

FIG/ ITEM	PART NUMBER	AIRLINE PART NUMBER	NOMENCLATURE							USAGE CODE	UNITS PER ASSY
			1	2	3	4	5	6	7		
1- 185	H39953-5		.	NUT (V15653) (SPEC BACN10HR5CS) (OPT 67832AS524 (V56878)) (OPT BMN5024CPD3-5 (V97928)) (OPT BH00303-5 (V27238)) (OPT BH003035 (V27238)) (OPT BMN5024CPD35 (V97928)) (OPT CR59085 (V62554)) (OPT H39953 (V15653)) (OPT SL705095 (V11815)) (OPT 109LH90315 (V72962)) (OPT 67832AS5 (V56878)) (OPT BMN10HRRCPD3-5 (V97928))							3
190	H51560-5		.	NUT (V15653) (SPEC BACN10HR5CD) (OPT 67832CD524 (V56878)) (OPT 102LH9031-5 (V72962)) (OPT BH00303CM5 (V27238)) (OPT SL7108C524 (V11815)) (OPT BH00303CM5 (V27238)) (OPT BMN5024CWD35 (V97928)) (OPT CR60305 (V62554)) (OPT SL7108C5 (V11815)) (OPT VCU0005D5 (V06710)) (OPT 102LH90315 (V72962)) (OPT BMN10HRCWD3-5 (V97928))							1
195	113A2800-1			DELETED							
195A	113A2800-3		.	CARRIAGE ASSY-INBD (REF CMM 27-55-71)					A, C, E, F, J, L, N, Q, U		1
-195B	113A2800-5		.	CARRIAGE ASSY-INBD (REF CMM 27-55-71)					S		1
-195C	113A2800-7		.	CARRIAGE ASSY-INBD (REF CMM 27-55-71)					W		1
-195D	113A2800-201		.	CARRIAGE ASSY-INBD (REF CMM 27-55-71)					Y		1
-195E	113A2800-203		.	CARRIAGE ASSY-INBD (REF CMM 27-55-71)					AA		1
-195F	113A2800-9		.	CARRIAGE ASSY-INBD (REF CMM 27-55-71)					AC, AJ		1

-Item not Illustrated

**57-53-04**

ILLUSTRATED PARTS LIST

Page 1025

Jul 01/2009



## COMPONENT MAINTENANCE MANUAL

FIG/ ITEM	PART NUMBER	AIRLINE PART NUMBER	NOMENCLATURE							USAGE CODE	UNITS PER ASSY
			1	2	3	4	5	6	7		
1-											
I -195G	113A2800-205		.	CARRIAGE	ASSY-INBD					AE, AG	1
				(REF CMM 27-55-71)							
-200	113A2800-2			DELETED							
-200A	113A2800-4		.	CARRIAGE	ASSY-INBD					B, D, G, H, K, M, P, R, V	1
				(REF CMM 27-55-71)							
-200B	113A2800-6		.	CARRIAGE	ASSY-INBD					T	1
				(REF CMM 27-55-71)							
-200C	113A2800-8		.	CARRIAGE	ASSY-INBD					X	1
				(REF CMM 27-55-71)							
-200D	113A2800-202		.	CARRIAGE	ASSY-INBD					Z	1
				(REF CMM 27-55-71)							
-200E	113A2800-204		.	CARRIAGE	ASSY-INBD					AB	1
				(REF CMM 27-55-71)							
I -200F	113A2800-10		.	CARRIAGE	ASSY-INBD					AD, AK	1
				(REF CMM 27-55-71)							
I -200G	113A2800-206		.	CARRIAGE	ASSY-INBD					AF, AH	1
				(REF CMM 27-55-71)							
205	BACF3H08J~ M008AN		.	FILLER							1
210	BACB30NT2K3		.	BOLT							2
215	BACW10CT5CU		.	WASHER					E-H		2
I -215A	BACW10EG5CU		.	WASHER					A-D, J- AK		2
220	BRH10C08D		.	NUT							2
				(V52828)							
				(SPEC BACN10JC08CD)							
				(OPT H51650-08BAC (V15653))							
				(OPT 102LH9075-82W (V72962))							
				(OPT NS202486-82 (V80539))							
				(OPT T6C832JCD (V11815))							
225	BACF3H04~ DA004AN		.	FILLER							2
230	113A2238-1		.	RETAINER-SHEAR TUBE							1
235	113A2234-1		.	TUBE-TORQUE					A-X, AC, AD, AJ, AK		1

-Item not Illustrated

**57-53-04**

ILLUSTRATED PARTS LIST

Page 1026

Jul 01/2009





## COMPONENT MAINTENANCE MANUAL

FIG/ ITEM	PART NUMBER	AIRLINE PART NUMBER	NOMENCLATURE							USAGE CODE	UNITS PER ASSY
			1	2	3	4	5	6	7		
1-											
-235A	113A2234-201		.	TUBE-TORQUE						Y-AB, AE, AF, AG, AH	1
240	BACP18BC02A06P		.	PIN-COTTER							4
245	BACB30MR4DK15		.	BOLT						A-V	2
-245A	BACB30MR4AD15		.	BOLT (OPT ITEM 245B)						W-AK	2
-245B	BACB30MR4DK15		.	BOLT (OPT ITEM 245A)						W-AK	2
250	BACB30MR5DK16		.	BOLT						A-V	2
-250A	BACB30MR5AD16		.	BOLT (OPT ITEM 250B)						W-AK	2
-250B	BACB30MR5DK16		.	BOLT (OPT ITEM 250A)						W-AK	2
255	BACW10BP4ACU		.	WASHER						A-P	2
-255A	BACW10BP5ACU		.	WASHER						Q-AK	2
260	BACW10BP5ACU		.	WASHER							2
265	BACW10BP4DP		.	WASHER							2
270	BACW10BP5DP		.	WASHER							2
275	BACN11N4CS		.	NUT							2
280	BACN11N5CS		.	NUT							2
285	BACB28AK04-031		.	BUSHING							2
290	BACB28AK05-031		.	BUSHING							2
295	113A2700-15		.	FLAP ASSY-AFT (REF CMM 57-53-09)						F	1
-295A	113A2700-1		.	FLAP ASSY-AFT (REF CMM 57-53-09)						E	1
-295B	113A2700-17		.	FLAP ASSY-AFT (REF CMM 57-53-09)						A, C, L	1
-295C	113A2700-21		.	FLAP ASSY-AFT (REF CMM 57-53-09)						J, N, Q, S, U, Y	1
-295D	113A2700-23		.	FLAP ASSY-AFT (REF CMM 57-53-09)						W, AA	1
-295E	113A2700-25		.	FLAP ASSY-AFT (REF CMM 57-53-09)						AC, AE, AG, AJ	1

-Item not Illustrated

**57-53-04**

ILLUSTRATED PARTS LIST

Page 1027

Jul 01/2009



## COMPONENT MAINTENANCE MANUAL

FIG/ ITEM	PART NUMBER	AIRLINE PART NUMBER	NOMENCLATURE							USAGE CODE	UNITS PER ASSY
			1	2	3	4	5	6	7		
1-											
-300	113A2700-16		.	FLAP ASSY-AFT						H	1
				(REF CMM 57-53-09)							
-300A	113A2700-2		.	FLAP ASSY-AFT						G	1
				(REF CMM 57-53-09)							
-300B	113A2700-18		.	FLAP ASSY-AFT						B, D, M	1
				(REF CMM 57-53-09)							
-300C	113A2700-22		.	FLAP ASSY-AFT						K, P, R, T, V, Z	1
				(REF CMM 57-53-09)							
-300D	113A2700-24		.	FLAP ASSY-AFT						X, AB	1
				(REF CMM 57-53-09)							
-300E	113A2700-26		.	FLAP ASSY-AFT						AD, AF, AH, AK	1
				(REF CMM 57-53-09)							
-305	113A2700-41			DELETED							
-305A	113A2700-43			DELETED							
305B	113A2100-41		.	FLAP ASSY-AFT						A, F	1
				(REF CMM 57-53-05)							
-305C	113A2100-43		.	FLAP ASSY-AFT						E	1
				(REF CMM 57-53-05)							
-305D	113A2100-51		.	FLAP ASSY-AFT						C	1
				(REF CMM 57-53-05)							
-305E	113A2100-53		.	FLAP ASSY-AFT						J, L	1
				(REF CMM 57-53-05)							
-305F	113A2100-55		.	FLAP ASSY-AFT						N	1
				(REF CMM 57-53-05)							
-305G	113A2100-57		.	FLAP ASSY-AFT						Q, S, U	1
				(REF CMM 57-53-05)							
-305H	113A2100-59		.	FLAP ASSY-AFT						W	1
				(REF CMM 57-53-05)							
-305J	113A2100-201		.	FLAP ASSY-AFT						Y	1
				(REF CMM 57-53-05)							
-305K	113A2100-203		.	FLAP ASSY-AFT						AA	1
				(REF CMM 57-53-05)							
-305L	113A2100-61		.	FLAP ASSY-AFT						AC	1
				(REF CMM 57-53-05)							
-305M	113A2100-205		.	FLAP ASSY-AFT						AE	1
				(REF CMM 57-53-05)							
-305N	113A2100-207		.	FLAP ASSY-AFT						AG	1
				(REF CMM 57-53-05)							

-Item not Illustrated

**57-53-04**

ILLUSTRATED PARTS LIST

Page 1028

Jul 01/2009



## COMPONENT MAINTENANCE MANUAL

FIG/ ITEM	PART NUMBER	AIRLINE PART NUMBER	NOMENCLATURE							USAGE CODE	UNITS PER ASSY
			1	2	3	4	5	6	7		
1-											
-305P	113A2100-63		.	FLAP	ASSY-AFT					AJ	1
					(REF CMM 57-53-05)						
-310	113A2700-42			DELETED							
-310A	113A2700-44			DELETED							
-310B	113A2100-42		.	FLAP	ASSY-AFT					B, H	1
					(REF CMM 57-53-05)						
-310C	113A2100-44		.	FLAP	ASSY-AFT					G	1
					(REF CMM 57-53-05)						
-310D	113A2100-52		.	FLAP	ASSY-AFT					D	1
					(REF CMM 57-53-05)						
-310E	113A2100-54		.	FLAP	ASSY-AFT					K, M	1
					(REF CMM 57-53-05)						
-310F	113A2100-56		.	FLAP	ASSY-AFT					P	1
					(REF CMM 57-53-05)						
-310G	113A2100-58		.	FLAP	ASSY-AFT					R, T, V	1
					(REF CMM 57-53-05)						
-310H	113A2100-60		.	FLAP	ASSY-AFT					X	1
					(REF CMM 57-53-05)						
-310J	113A2100-202		.	FLAP	ASSY-AFT					Z	1
					(REF CMM 57-53-05)						
-310K	113A2100-204		.	FLAP	ASSY-AFT					AB	1
					(REF CMM 57-53-05)						
-310L	113A2100-62		.	FLAP	ASSY-AFT					AD	1
					(REF CMM 57-53-05)						
-310M	113A2100-206		.	FLAP	ASSY-AFT					AF	1
					(REF CMM 57-53-05)						
-310N	113A2100-208		.	FLAP	ASSY-AFT					AH	1
					(REF CMM 57-53-05)						
-310P	113A2100-64		.	FLAP	ASSY-AFT					AK	1
					(REF CMM 57-53-05)						

-Item not Illustrated

# 57-53-04

ILLUSTRATED PARTS LIST

Page 1029

Jul 01/2009