



COMPONENT MAINTENANCE MANUAL WITH ILLUSTRATED PARTS LIST

OUTBOARD FLAP MID/AFT FLAP ASSEMBLY

PART NUMBER

**65C34946–10SP, –13SP, –14SP, –19SP, –1SP, –20SP,
–21SP, –22SP, –23SP, –24SP, –2SP, –33SP, –34SP,
–3SP, –4SP, –5SP, –6SP, –7SP, –8SP, –9SP**

BOEING PROPRIETARY, CONFIDENTIAL, AND/OR TRADE SECRET

Copyright © 1995 The Boeing Company
Unpublished Work - All Rights Reserved

Boeing claims copyright in each page of this document only to the extent that the page contains copyrightable subject matter. Boeing also claims copyright in this document as a compilation and/or collective work.

This document includes proprietary information owned by The Boeing Company and/or one or more third parties. Treatment of the document and the information it contains is governed by contract with Boeing. For more information, contact The Boeing Company, P.O. Box 3707, Seattle, Washington 98124.

Boeing, the Boeing signature, the Boeing symbol, 707, 717, 727, 737, 747, 757, 767, 777, 787, Dreamliner, BBJ, DC-8, DC-9, DC-10, KC-10, KDC-10, MD-10, MD-11, MD-80, MD-88, MD-90, P-8A, Poseidon and the Boeing livery are all trademarks owned by The Boeing Company; and no trademark license is granted in connection with this document unless provided in writing by Boeing.

PUBLISHED BY BOEING COMMERCIAL AIRPLANES GROUP, SEATTLE, WASHINGTON, USA
A DIVISION OF THE BOEING COMPANY
PAGE DATE: Jul 01/2009

57-53-30

Page 1
Jul 01/2009



COMPONENT MAINTENANCE MANUAL

Revision No. 10
Jul 01/2009

To: All holders of OUTBOARD FLAP MID/AFT FLAP ASSEMBLY 57-53-30.

Attached is the current revision to this COMPONENT MAINTENANCE MANUAL

The COMPONENT MAINTENANCE MANUAL is furnished either as a printed manual, on microfilm, or digital products, or any combination of the three. This revision replaces all previous microfilm cartridges or digital products. All microfilm and digital products are reissued with all obsolete data deleted and all updated pages added.

For printed manuals, changes are indicated on the List of Effective Pages (LEP). The pages which are revised will be identified on the LEP by an R (Revised), A (Added), O (Overflow, i.e. changes to the document structure and/or page layout), or D (Deleted). Each page in the LEP is identified by Chapter-Section-Subject number, page number and page date.

Pages replaced or made obsolete by this revision should be removed and destroyed.

ATTENTION

IF YOU RECEIVE PRINTED REVISIONS, PLEASE VERIFY THAT YOU HAVE RECEIVED AND FILED THE PREVIOUS REVISION. BOEING MUST BE NOTIFIED WITHIN 30 DAYS IF YOU HAVE NOT RECEIVED THE PREVIOUS REVISION. REQUESTS FOR REVISIONS OTHER THAN THE PREVIOUS REVISION WILL REQUIRE A COMPLETE MANUAL REPRINT SUBJECT TO REPRINT CHARGES SHOWN IN THE DATA AND SERVICES CATALOG.

57-53-30

TRANSMITTAL LETTER

Page 1

Jul 01/2009



COMPONENT MAINTENANCE MANUAL

Location of Change

Description of Change

NO HIGHLIGHTS

57-53-30

HIGHLIGHTS

Page 1

Jul 01/2009



COMPONENT MAINTENANCE MANUAL

Subject/Page	Date	Subject/Page	Date	Subject/Page	Date
TITLE PAGE		57-53-30 CLEANING (cont)		57-53-30 SPECIAL TOOLS, FIXTURES, AND EQUIPMENT (cont)	
O 1	Jul 01/2009	402	BLANK	902	BLANK
2	BLANK	57-53-30 CHECK		57-53-30 ILLUSTRATED PARTS LIST	
57-53-30 TRANSMITTAL LETTER		501	Mar 01/2006	1001	Nov 01/2008
O 1	Jul 01/2009	502	BLANK	1002	Nov 01/2006
2	BLANK	57-53-30 REPAIR - GENERAL		1003	Jul 01/2006
57-53-30 HIGHLIGHTS		601	Mar 01/2006	1004	Jul 01/2006
O 1	Jul 01/2009	602	Mar 01/2006	1005	Jul 01/2006
2	BLANK	603	Mar 01/2006	1006	Nov 01/2007
57-53-30 EFFECTIVE PAGES		604	BLANK	1007	Nov 01/2007
1 thru 2	Jul 01/2009	57-53-30 REPAIR 1-1		1008	Nov 01/2007
57-53-30 CONTENTS		601	Mar 01/2006	1009	Nov 01/2007
1	Mar 01/2006	602	BLANK	1010	Nov 01/2007
2	BLANK	57-53-30 REPAIR 2-1		1011	Nov 01/2007
57-53-30 TR AND SB RECORD		601	Mar 01/2006	1012	Nov 01/2007
1	Mar 01/2006	602	BLANK	1013	Nov 01/2007
2	BLANK	57-53-30 REPAIR 3-1		1014	Nov 01/2007
57-53-30 REVISION RECORD		601	Mar 01/2006	1015	Nov 01/2007
1	Mar 01/2006	602	Mar 01/2006	1016	Nov 01/2007
2	Mar 01/2006	603	Mar 01/2006	1017	Nov 01/2007
57-53-30 RECORD OF TEMPORARY REVISIONS		604	Mar 01/2006	1018	Nov 01/2007
1	Mar 01/2006	57-53-30 REPAIR 4-1		1019	Nov 01/2007
2	Mar 01/2006	601	Mar 01/2006	1020	Nov 01/2007
57-53-30 INTRODUCTION		602	Mar 01/2006	1021	Nov 01/2007
1	Mar 01/2009	57-53-30 REPAIR 5-1		1022	Nov 01/2007
2	BLANK	601	Mar 01/2006	1023	Nov 01/2007
57-53-30 DESCRIPTION AND OPERATION		602	Mar 01/2006	1024	Nov 01/2007
1	Mar 01/2006	57-53-30 ASSEMBLY		1025	Nov 01/2007
2	BLANK	701	Nov 01/2008	1026	Nov 01/2007
57-53-30 TESTING AND FAULT ISOLATION		702	Jul 01/2008	1027	Nov 01/2007
101	Mar 01/2006	703	Mar 01/2006	1028	Nov 01/2007
102	BLANK	704	Mar 01/2006	1029	Nov 01/2007
57-53-30 DISASSEMBLY		705	Mar 01/2006	1030	Nov 01/2007
301	Jul 01/2006	706	Mar 01/2006	1031	Nov 01/2007
302	BLANK	57-53-30 FITS AND CLEARANCES		1032	Nov 01/2007
57-53-30 CLEANING		801	Mar 01/2006	1033	Nov 01/2007
401	Mar 01/2006	802	BLANK	1034	Nov 01/2007
		57-53-30 SPECIAL TOOLS, FIXTURES, AND EQUIPMENT		1035	Nov 01/2007
		901	Mar 01/2006	1036	Nov 01/2007

A = Added, R = Revised, D = Deleted, O = Overflow

57-53-30

EFFECTIVE PAGES

Page 1

Jul 01/2009



COMPONENT MAINTENANCE MANUAL

Subject/Page	Date	Subject/Page	Date	Subject/Page	Date
57-53-30	ILLUSTRATED PARTS LIST				
(cont)					
1037	Nov 01/2007				
1038	Nov 01/2007				
1039	Nov 01/2007				
1040	Nov 01/2007				
1041	Nov 01/2007				
1042	Nov 01/2007				
1043	Nov 01/2007				
1044	Nov 01/2007				
1045	Nov 01/2007				
1046	Nov 01/2007				
1047	Nov 01/2007				
1048	Nov 01/2007				
1049	Nov 01/2007				
1050	Nov 01/2007				

A = Added, R = Revised, D = Deleted, O = Overflow

57-53-30

EFFECTIVE PAGES

Page 2

Jul 01/2009

**COMPONENT MAINTENANCE MANUAL****TABLE OF CONTENTS**

<u>Paragraph Title</u>		<u>Page</u>
OUTBOARD FLAP MID/AFT FLAP ASSEMBLY - DESCRIPTION AND OPERATION		1
TESTING AND FAULT ISOLATION	(Not Applicable)	
DISASSEMBLY		301
CLEANING		401
CHECK		501
REPAIR		601
ASSEMBLY		701
FITS AND CLEARANCES	(Not Applicable)	
SPECIAL TOOLS, FIXTURES, AND EQUIPMENT	(Not Applicable)	
ILLUSTRATED PARTS LIST		1001

57-53-30

CONTENTS

Page 1

Mar 01/2006



COMPONENT MAINTENANCE MANUAL

TEMPORARY REVISION AND SERVICE BULLETIN RECORD

BOEING SERVICE BULLETIN	BOEING TEMPORARY REVISION	OTHER DIRECTIVE	DATE OF INCORPORATION INTO MANUAL
		PRR 34686	DEC 01/96
		PRR 34704	DEC 01/96
		PRR 34857	DEC 01/96
		PRR 35005-97	DEC 01/96
		PRR 35014	DEC 01/96
		PRR 35022	DEC 01/96
		MC 5750MP3004	DEC 01/96
		MC 5750MP3010	DEC 01/96
		PRR 35005-152	SEP 01/97
		PRR 35005-178	JUL 01/98
737-57-1227		PRR 35399-R	MAR 01/04
737-57-1227R1		MRR 3579-1335	MAR 01/04

57-53-30

TR AND SB RECORD

Page 1

Mar 01/2006



COMPONENT MAINTENANCE MANUAL

Revision		Filed		Revision		Filed	
Number	Date	Date	Initials	Number	Date	Date	Initials

57-53-30

REVISION RECORD

Page 2

Mar 01/2006



COMPONENT MAINTENANCE MANUAL

Temporary Revision		Inserted		Removed		Temporary Revision		Inserted		Removed	
Number	Date	Date	Initials	Date	Initials	Date	Initials	Number	Date	Date	Initials

57-53-30

RECORD OF TEMPORARY REVISION

Page 2

Mar 01/2006



COMPONENT MAINTENANCE MANUAL

INTRODUCTION

1. General

- A. The instructions in this manual supply the data necessary to do the maintenance functions together with the test, fault isolation, repair, and replacement of the defective parts.
- B. This manual is divided into different parts:
 - (1) Title Page
 - (2) Transmittal Letter
 - (3) Highlights
 - (4) List of Effective Pages
 - (5) Table of Contents
 - (6) Temporary Revision & Service Bulletin Record
 - (7) Record of Revisions
 - (8) Record of Temporary Revisions
 - (9) Introduction
 - (10) Procedures & IPL Sections
- C. Components that can be repaired have a different repair number for each specified repair. To find the repair number location of a component, look in the Repair-General procedure at the beginning of the REPAIR section. The Repair-General procedure also has an explanation of the True Position Dimension symbols used.
- D. All dimensions, measures, quantities and weights included are in English units. When metric equivalents are given they will be in the parentheses that follow the English units.
- E. The introduction to the Illustrated Parts List (IPL) shows how the IPL data is used.
- F. Design changes, optional parts, configuration differences and Service Bulletin modifications may cause different part numbers. These part numbers are identified in the IPL with an alphabetical letter which is added to the end of the basic item number. This new item number is referred to as an alpha-variant. Throughout the manual, IPL basic item number references also apply to alpha-variants unless shown differently.
- G. The tool reference numbers found in the individual procedures and in the Special Tools, Fixtures, and Equipment section are used to identify if a tool is a standard tool (STD-XXXX), a commercial tool (COM-XXXX), or a Special Tool (SPL-XXXX). This reference number is also used to distinguish between tools with similar names in the same procedure. These reference numbers are for use in the documentation only. They are not to be used for ordering tools.

57-53-30

INTRODUCTION

Page 1

Mar 01/2009



COMPONENT MAINTENANCE MANUAL

OUTBOARD FLAP MID/AFT FLAP ASSEMBLY - DESCRIPTION AND OPERATION

1. Description

- A. The outboard trailing edge flap, mid/aft flap assembly is part of an auxiliary wing surface which supplies added lift during takeoff and landing. The mid/aft flap assembly has two segments, a midflap assembly and an afflap assembly.
- B. The midflap is a sheet metal unit which includes the front spar, rear spar, trailing edge upper and lower chord angles, nose ribs, interspar ribs, and trailing edge ribs. The flap contains three foreflap tracks which travel on roller bearings installed between three interspar rib assemblies. Four tracks in the trailing edge section hold up the afflap. The midflap has a clad aluminum alloy skin. The lower skin panels can be removed to permit access to the carriages and internal areas of the flap. The inboard and outboard ends of the midflap have deflection control fittings which become guides for horizontal flap alignment when the flap is extended and retracted.
- C. The afflap is a monospar structure which includes the spar, sheet metal covered nose ribs, and a machine-tapered honeycomb trailing edge. The upper and lower surfaces have clad aluminum alloy skin. Four sets of rollers on the leading edge of the flap ride on cam tracks in the trailing edge of the midflap. Eccentric bushings in the carriage sideplates let you adjust the position of the afflap compared to the midflap.

2. Operation

- A. A hydraulically operated drive system operates the two outboard trailing edge flap assemblies. The drive system is operated by a hand-controlled, flap control lever. A power transmission system actuates two torque tubes attached to fittings on the underside of the midflap to extend the three components of the flap. A series of links controls the related movement of the flap segments.

3. Leading Particulars (approximate)

- A. Length – 18 feet
- B. Width – 35 inches (retracted)
- C. Thickness – 15 inches
- D. Weight – 300 pounds

57-53-30

DESCRIPTION AND OPERATION

Page 1

Mar 01/2006



COMPONENT MAINTENANCE MANUAL

TESTING AND FAULT ISOLATION

(NOT APPLICABLE)

57-53-30

TESTING AND FAULT ISOLATION

Page 101

Mar 01/2006



COMPONENT MAINTENANCE MANUAL

DISASSEMBLY

1. General

- A. This procedure has the data necessary to disassemble the outboard mid/aft flap assembly.
- B. Disassemble this component sufficiently to isolate the defects, do the necessary repairs, and put the component back to a serviceable condition.
- C. Refer to IPL Figure 1 for item numbers.

2. Disassembly

A. References

Reference	Title
CMM 57-53-18	OUTBOARD WING TRAILING EDGE MIDFLAP ASSEMBLY
CMM 57-53-20	AFT FLAP ASSEMBLY
CMM 57-53-36	OUTBOARD FLAP CARRIAGE ASSEMBLY

B. Procedure

- (1) Use standard industry practices and these special steps. Make notes of the thickness and locations from which shims are removed during disassembly.
- (2) Remove aftflap (390, 395).
 - (a) Remove the access doors from the midflap with their related bolts. (CMM 57-53-18; IPL Fig. 2, items 30 thru 45, and IPL Fig. 3, items 25 thru 40). Do not remove the bonded rubstrips at this time.
 - (b) Remove bolts (CMM 57-53-20; IPL Fig. 1, items 115, 120, 125, 130), related washers and nuts, bottom flight rollers (207A, 210) and mating bushings. Lift aftflap from the track. Refer to CMM 57-53-20 for overhaul of the aftflap.
- (3) Remove carriage assembly (370, 377, 378).
 - (a) Remove the access doors from the midflap with their related bolts (CMM 57-53-18; IPL Fig. 5, items 80, 85; IPL Fig. 6, items 65, 70).
 - (b) Remove these parts (Ref CMM 57-53-36; IPL Fig. 1): bearing retainer bolt (460), washers (470, 475), and nut (490). Disassembly of the bearing is not necessary to permit removal.
 - (c) Hold up the carriage assembly and remove bolts (CMM 57-53-18; IPL Fig. 5, item 150, and IPL Fig. 6, item 125), related washers, nuts, retainers, bolts and bushings. Slide the carriage assembly forward and away. Refer to CMM 57-53-36 for overhaul of the carriage assembly.
- (4) Refer to CMM 57-53-18 for overhaul of midflap (380, 385).

57-53-30

DISASSEMBLY

Page 301

Jul 01/2006



COMPONENT MAINTENANCE MANUAL

CLEANING

1. General

- A. This procedure has the data necessary to clean the outboard mid/aft flap assembly.
- B. Refer to the Standard Overhaul Practices Manual (SOPM) for the SOPM subjects identified in this procedure.
- C. Refer to IPL Figure 1 for item numbers.

2. Cleaning

A. References

Reference	Title
SOPM 20-30-01	CLEANING AND RELUBRICATING BEARINGS
SOPM 20-30-03	GENERAL CLEANING PROCEDURES

B. Procedure

- (1) Clean all parts, but not the bearings, with standard industry practices and the instructions in SOPM 20-30-03.
- (2) Clean bearings per SOPM 20-30-01.

57-53-30

CLEANING

Page 401

Mar 01/2006



COMPONENT MAINTENANCE MANUAL

CHECK

1. General

- A. This procedure has the data necessary to find defects in the material of the specified parts.
- B. Refer to the Standard Overhaul Practices Manual (SOPM) for the SOPM subjects identified in this procedure.
- C. Refer to IPL Figure 1 for item numbers.

2. Check

- A. Examine all parts for defects by standard industry practices.

57-53-30

CHECK

Page 501

Mar 01/2006



COMPONENT MAINTENANCE MANUAL

REPAIR

1. Contents

A. Repair, refinish, and replacement procedures are included in separate repair sections as follows:

Table 601:

P/N	NAME	REPAIR
- - -	MISCELLANEOUS PARTS REFINISH	1-1
65C26326	HINGE BRACKET ASSY	2-1
69-73573	ACTUATION BRACKET ASSY	3-1
65C34777	ACTUATION BRACKET ASSY	3-1
69-37238	LINK	4-1
69-38824	BOLT	5-1

2. Standard Practices

A. Refer to the following standard practices, as applicable, for details of procedures in individual repairs.

- 20-00-00 Introduction
- SOPM 20-30-02 Stripping of Protective Finishes
- SOPM 20-30-03 General Cleaning Procedures
- SOPM 20-41-01 Decoding Table for Boeing Finish Codes
- SOPM 20-41-02 Application of Chemical and Solvent Resistant Finishes
- SOPM 20-42-05 Bright Cadmium Plating
- SOPM 20-43-01 Cadmium Plating
- SOPM 20-43-03 Chemical Conversion Coatings for Aluminum
- SOPM 20-44-01 Application of Special Purpose Coatings and Finishes
- SOPM 20-50-03 Bearing Installation and Retention
- SOPM 20-50-12 Application of Adhesives
- SOPM 20-60-02 Finishing Materials
- SOPM 20-60-03 Lubricants
- SOPM 20-60-04 Miscellaneous Materials

3. Materials

NOTE: Equivalent substitutes can be used.

- A. Grease – grease, D00015 BMS 3-24
- B. Primer – primer, C00259 BMS 10-11, Type 1
- C. Primer – primer, C00803 Type 51
- D. Sealant – sealant, A00247 BMS 5-95
- E. Enamel – coating, C00260 BMS 10-11, type 2

57-53-30

REPAIR - GENERAL

Page 601

Mar 01/2006



COMPONENT MAINTENANCE MANUAL

4. Dimensioning Symbols

- A. Standard True Position Dimensioning Symbols used in the applicable repair procedures are shown in REPAIR-GENERAL, Figure 601.

57-53-30

REPAIR - GENERAL

Page 602

Mar 01/2006



COMPONENT MAINTENANCE MANUAL

—	STRAIGHTNESS	∅	DIAMETER
□	FLATNESS	S ∅	SPHERICAL DIAMETER
⊥	PERPENDICULARITY (OR SQUARENESS)	R	RADIUS
//	PARALLELISM	SR	SPHERICAL RADIUS
○	ROUNDNESS	()	REFERENCE
⊙	CYLINDRICITY	BASIC	A THEORETICALLY EXACT DIMENSION USED
⌒	PROFILE OF A LINE	(BSC)	TO DESCRIBE SIZE, SHAPE OR LOCATION OF
⌒	PROFILE OF A SURFACE	OR	A FEATURE. FROM THIS FEATURE PERMISSIBLE
◎	CONCENTRICITY	DIM	VARIATIONS ARE ESTABLISHED BY TOLERANCES ON OTHER DIMENSIONS OR NOTES.
≡	SYMMETRY	-A-	DATUM
∠	ANGULARITY	Ⓜ	MAXIMUM MATERIAL CONDITION (MMC)
↗	RUNOUT	Ⓛ	LEAST MATERIAL CONDITION (LMC)
↗↗	TOTAL RUNOUT	Ⓢ	REGARDLESS OF FEATURE SIZE (RFS)
□	COUNTERBORE OR SPOTFACE	Ⓟ	PROJECTED TOLERANCE ZONE
∇	COUNTERSINK	FIM	FULL INDICATOR MOVEMENT
⊕	THEORETICAL EXACT POSITION OF A FEATURE (TRUE POSITION)		

EXAMPLES

— 0.002	STRAIGHT WITHIN 0.002	◎ ∅ 0.0005 C	CONCENTRIC TO DATUM C WITHIN 0.0005 DIAMETER
⊥ 0.002 B	PERPENDICULAR TO DATUM B WITHIN 0.002	≡ 0.010 A	SYMMETRICAL WITH DATUM A WITHIN 0.010
// 0.002 A	PARALLEL TO DATUM A WITHIN 0.002	∠ 0.005 A	ANGULAR TOLERANCE 0.005 WITH DATUM A
○ 0.002	ROUND WITHIN 0.002	⊕ ∅ 0.002 Ⓢ B	LOCATED AT TRUE POSITION WITHIN 0.002 DIA RELATIVE TO DATUM B, REGARDLESS OF FEATURE SIZE
⊙ 0.010	CYLINDRICAL SURFACE MUST LIE BETWEEN TWO CONCENTRIC CYLINDERS, ONE OF WHICH HAS A RADIUS 0.010 INCH GREATER THAN THE OTHER	⊥ ∅ 0.010 Ⓜ A	AXIS IS TOTALLY WITHIN A CYLINDER OF 0.010 INCH DIAMETER, PERPENDICULAR TO DATUM A, AND EXTENDING 0.510 INCH ABOVE DATUM A, MAXIMUM MATERIAL CONDITION
⌒ 0.006 A	EACH LINE ELEMENT OF THE SURFACE AT ANY CROSS SECTION MUST LIE BETWEEN TWO PROFILE BOUNDARIES 0.006 INCH APART RELATIVE TO DATUM A	0.510 Ⓟ	
⌒ 0.020 A	SURFACES MUST LIE WITHIN PARALLEL BOUNDARIES 0.020 INCH APART AND EQUALLY DISPOSED ABOUT TRUE PROFILE	2.000	THEORETICALLY EXACT DIMENSION IS 2.000
		OR	
		2.000	
		BSC	

True Position Dimensioning Symbols
Figure 601

57-53-30

REPAIR - GENERAL

Page 603

Mar 01/2006



COMPONENT MAINTENANCE MANUAL

MISCELLANEOUS PARTS REFINISH - REPAIR 1-1

1. General

- A. This procedure has the data necessary to refinish the parts, which are not given in the specific repairs.
- B. Refer to REPAIR-GENERAL, Paragraph 2. for the Standard Overhaul Practices Manual (SOPM) subjects identified in this procedure.
- C. Refer to REPAIR-GENERAL, Paragraph 3. for the description of the consumable codes identified in this procedure.
- D. Refer to IPL Figure 1 for the item numbers.

2. Refinish

- A. Repair of these parts is only replacement of the original finish. Refer to REPAIR 1-1, Table 601 for refinish details.

Table 601: Refinish Details

IPL FIG. & ITEM	MATERIAL	FINISH
Fig. 1		
Guides (50,55,60,65,85)	Al alloy 15-PH or 17-4PH CRES, 150-170A	Passivate (F-17.09).
Spacers (95,100)	4130 steel, 150-170 ksi	Cadmium plate (F-15.02) and bake 3 hours at 350-400°F.
Seal retainers (330,335,340,345)	Al alloy	Chromic acid anodize (F-17.04). Apply high temperature primer, C00803(F-19.43).

57-53-30

REPAIR 1-1

Page 601

Mar 01/2006



COMPONENT MAINTENANCE MANUAL

HINGE BRACKET ASSEMBLY - REPAIR 2-1

65C26326-1, -2, -3, -4, -9, -10, -11, -12

1. General

- A. This procedure has the data necessary to repair the hinge bracket assembly.
- B. Refer to REPAIR-GENERAL, Paragraph 2. for the Standard Overhaul Practices Manual (SOPM) subjects identified in this procedure.
- C. Refer to REPAIR-GENERAL, Paragraph 3. for the description of the consumable codes identified in this procedure.
- D. Refer to IPL Figure 1 for the item numbers.

2. Bearing (140, 260) Replacement

- A. Remove the old bearing.
- B. Install a replacement bearing with grease, D00015.
- C. Roller swage the bearing over the bracket per SOPM 20-50-03.
- D. Lubricate the bearing with grease, D00015.

3. Refinish

- A. Hinge brackets (150, 155, 270, 275) – Chromic acid anodize, and apply primer, C00259 (F-18.13).
Material: Al alloy.

57-53-30

REPAIR 2-1

Page 601

Mar 01/2006



COMPONENT MAINTENANCE MANUAL

ACTUATION BRACKET ASSY - REPAIR 3-1

69-73573-1, -2, 65C34777-5, -6

1. General

- A. This procedure has the data necessary to repair the hinge bracket assembly.
- B. Refer to REPAIR-GENERAL, Paragraph 2. for the Standard Overhaul Practices Manual (SOPM) subjects identified in this procedure.
- C. Refer to REPAIR-GENERAL, Paragraph 3. for the description of the consumable codes identified in this procedure.
- D. Refer to the REPAIR-GENERAL, Figure 601 for the Standard True Position Dimensioning Symbols shown in the repair.
- E. Refer to IPL Figure 1 for the item numbers.

2. Bushings (180, 185) Replacement

NOTE: For repair of surfaces which is only replacement of the original finish, refer to Refinish instructions, REPAIR 3-1, Figure 601.

- A. Remove the old bushings.
- B. Install new bushings per 20-50-03, with wet sealant, A00247.
- C. Machine the bushings per REPAIR 3-1, Figure 601 and REPAIR 3-1, Figure 602.
- D. Fillet seal the bushing flanges with sealant, A00247.

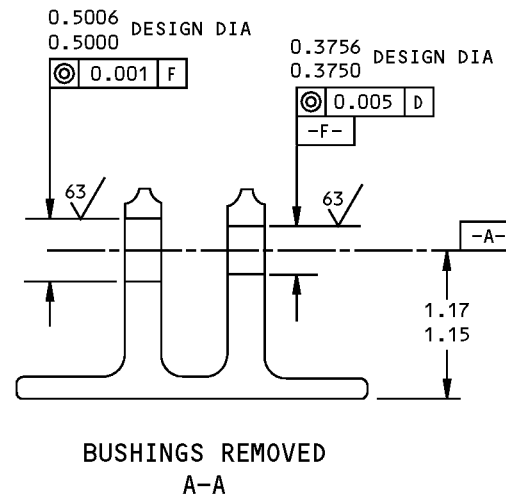
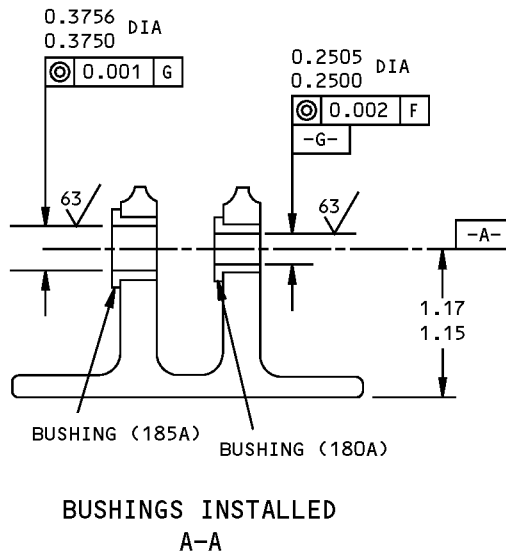
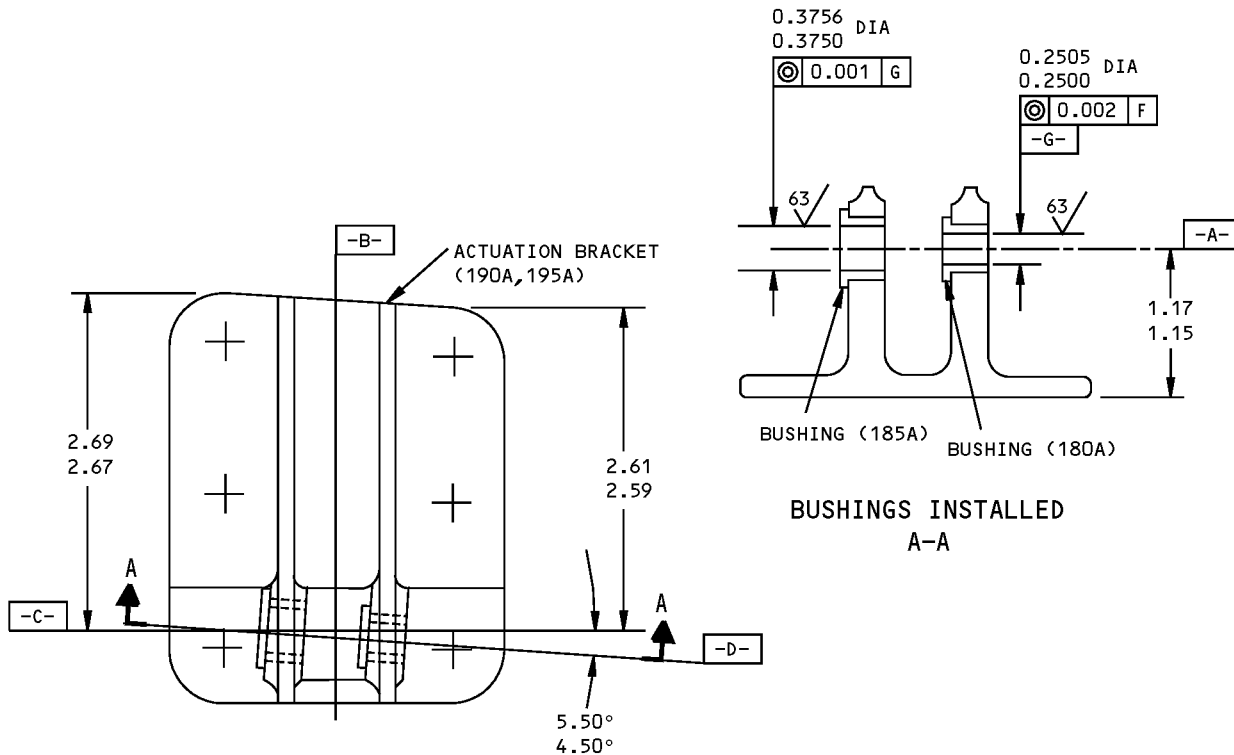
57-53-30

REPAIR 3-1

Page 601

Mar 01/2006

COMPONENT MAINTENANCE MANUAL



REFINISH

CHROMIC ACID ANODIZE AND APPLY PRIMER,
BMS 10-11, TYPE 1 (F-18.13) ALL OVER

REPAIR

125/ ALL MACHINED SURFACES UNLESS SHOWN
DIFFERENTLY

MATERIAL: AL ALLOY

ITEM NUMBERS REFER TO IPL FIG. 8

ALL DIMENSIONS ARE IN INCHES

69-73573-1,-2 Bracket Repair and Refinish
Figure 601

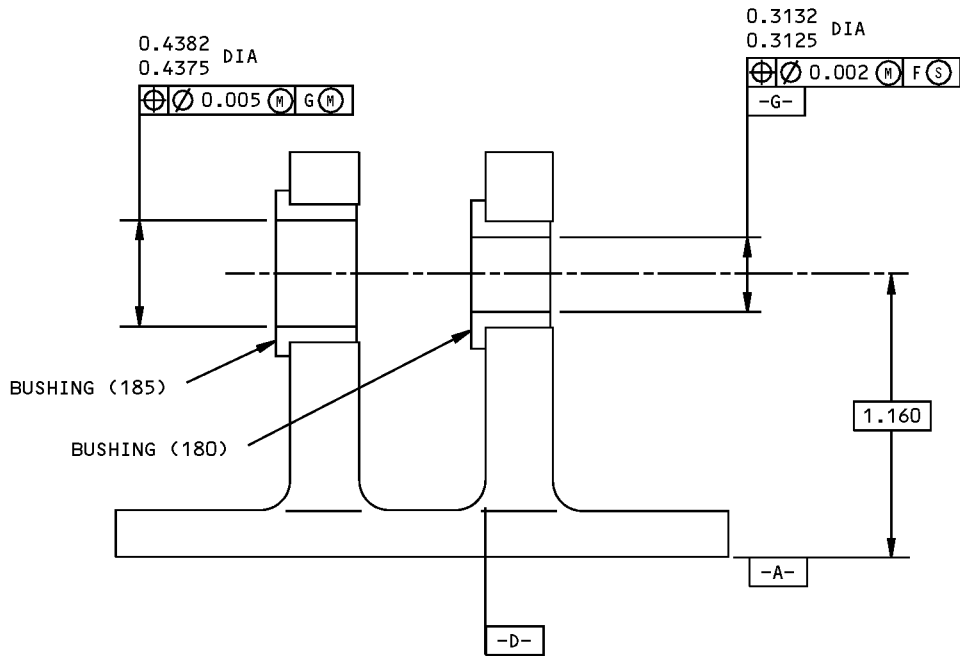
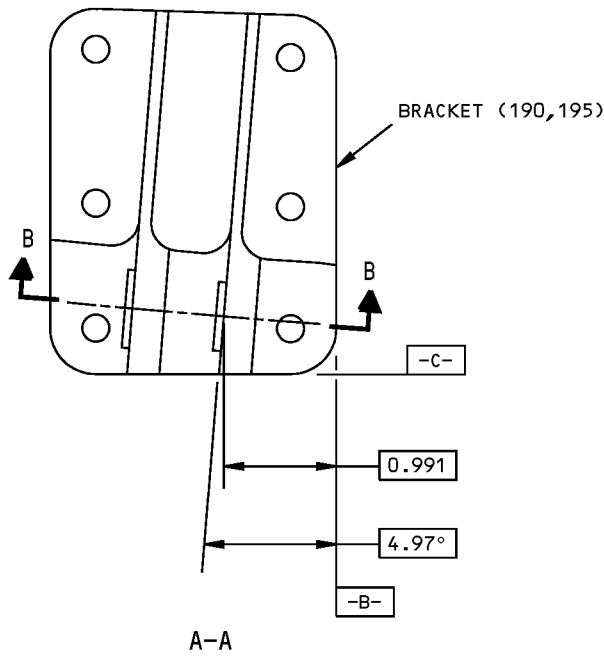
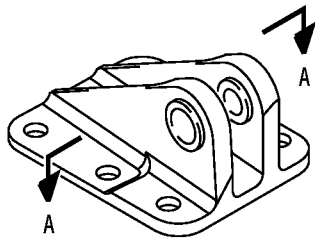
57-53-30

REPAIR 3-1

Page 602

Mar 01/2006

COMPONENT MAINTENANCE MANUAL



BUSHINGS INSTALLED
B-B

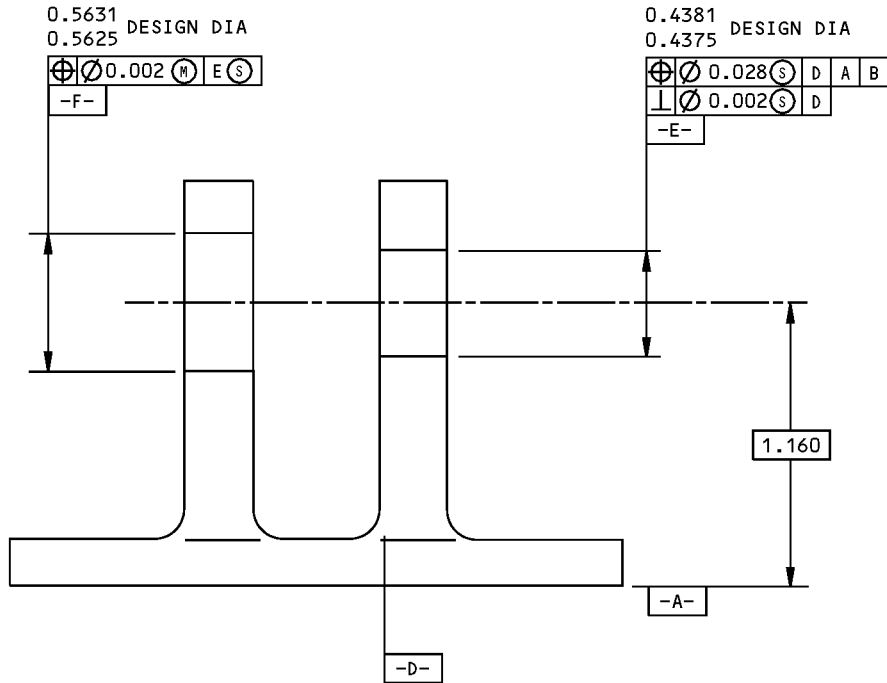
65C34777-5,6 Bracket Repair and Refinish
Figure 602 (Sheet 1 of 2)

57-53-30

REPAIR 3-1
Page 603
Mar 01/2006



COMPONENT MAINTENANCE MANUAL



BUSHINGS REMOVED
B-B

REFINISH

CHROMIC ACID ANODIZE AND APPLY PRIMER
BMS 10-11, TYPE 1 (F-18.13), BUT NO
PRIMER IN HOLES FOR BUSHINGS

REPAIR

125/ ALL MACHINED SURFACES UNLESS SHOWN
DIFFERENTLY

MATERIAL: AL ALLOY

ITEM NUMBERS REFER TO IPL FIG. 1

ALL DIMENSIONS ARE IN INCHES

65C34777-5,6 Bracket Repair and Refinish
Figure 602 (Sheet 2 of 2)

57-53-30

REPAIR 3-1

Page 604

Mar 01/2006



COMPONENT MAINTENANCE MANUAL

LINK - REPAIR 4-1

69-37238-2

1. General

- A. This procedure has the data necessary to repair the link.
- B. Refer to REPAIR-GENERAL, Paragraph 2. for the Standard Overhaul Practices Manual (SOPM) subjects identified in this procedure.
- C. Refer to REPAIR-GENERAL, Paragraph 3. for the description of the consumable codes identified in this procedure.
- D. Refer to the REPAIR-GENERAL, Figure 601 for the Standard True Position Dimensioning Symbols shown in the repair.
- E. Refer to IPL Figure 1 for the item numbers.

2. Plating Repair (REPAIR 4-1, Figure 601)

- A. Repair is only replacement of the original finish. Refer to Refinish instructions, REPAIR 4-1, Figure 601.

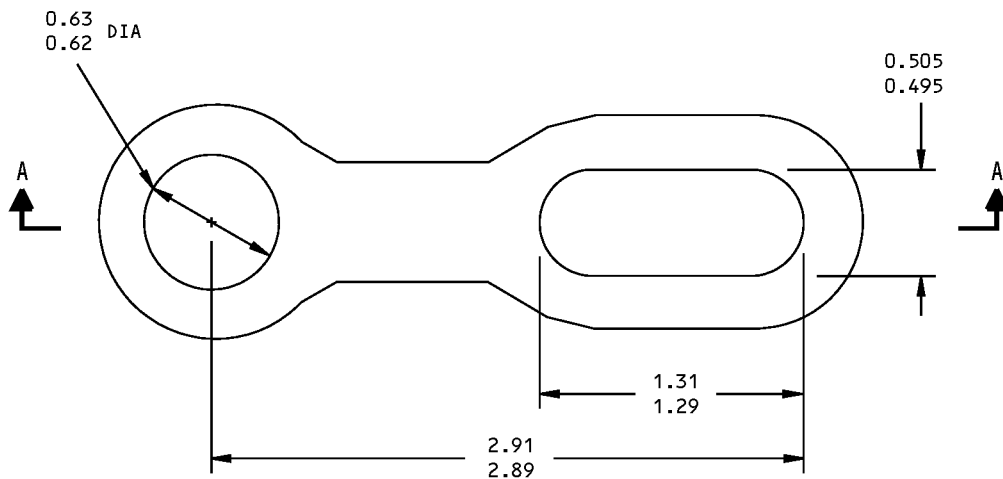
57-53-30

REPAIR 4-1

Page 601

Mar 01/2006

COMPONENT MAINTENANCE MANUAL



BREAK SHARP
EDGES
0.05
0.03 R
(TYPICAL
OUTSIDE)



FULL R
(TYPICAL)

FULL R
(TYPICAL)

A-A

REFINISH

CADMIUM-TITANIUM PLATE (F-15.01)
APPLY PRIMER BMS 10-11, TYPE 1
(F-20.02) AND ENAMEL BMS 10-11,
TYPE 2 (F-21.02).

REPAIR

(SAME AS REFINISH)

125/ ALL MACHINED SURFACES UNLESS SHOWN
DIFFERENTLY

MATERIAL: 4330M STEEL, 220-240 KSI

ALL DIMENSIONS ARE IN INCHES

69-37238-2 Link Repair and Refinish
Figure 601

57-53-30

REPAIR 4-1

Page 602

Mar 01/2006



COMPONENT MAINTENANCE MANUAL

BOLT - REPAIR 5-1

69-38824-5

1. General

- A. This procedure has the data necessary to repair the bolt.
- B. Refer to REPAIR-GENERAL, Paragraph 2. for the Standard Overhaul Practices Manual (SOPM) subjects identified in this procedure.
- C. Refer to REPAIR-GENERAL, Paragraph 3. for the description of the consumable codes identified in this procedure.
- D. Refer to the REPAIR-GENERAL, Figure 601 for the Standard True Position Dimensioning Symbols shown in the repair.
- E. Refer to IPL Figure 1 for the item numbers.

2. Plating Repair (REPAIR 5-1, Figure 601)

- A. Repair is only replacement of the original finish. Refer to Refinish instructions, REPAIR 5-1, Figure 601.

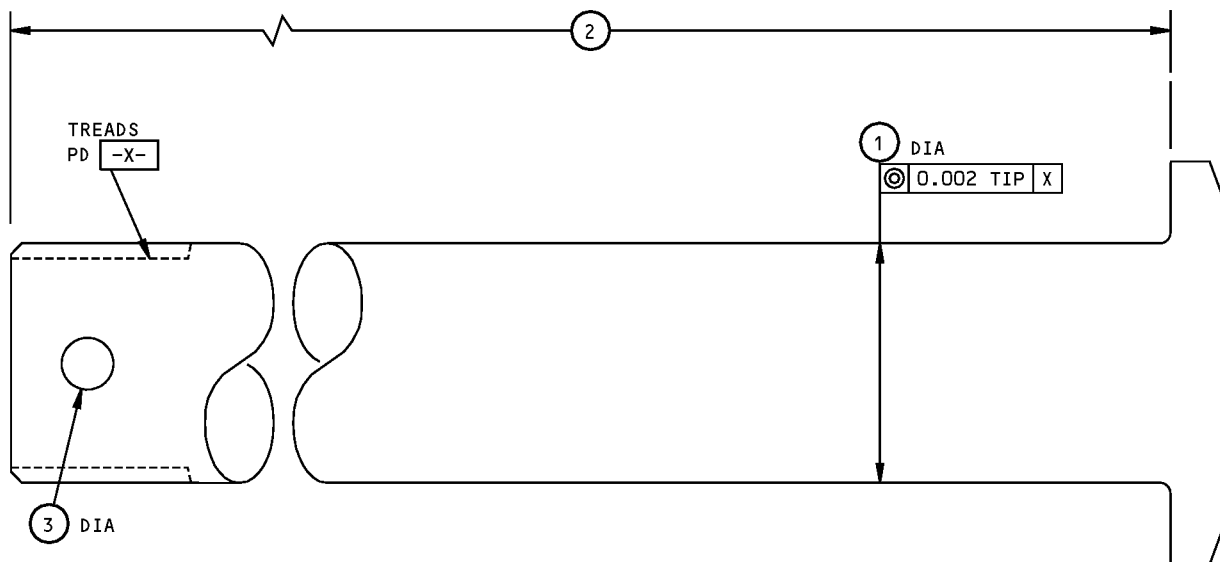
57-53-30

REPAIR 5-1

Page 601

Mar 01/2006

COMPONENT MAINTENANCE MANUAL



	①	②	③
DESIGN DIM	0.4370 0.4360	1.590 1.570	0.116 0.106
REPAIR LIMIT	---	---	---

REFINISH

CADMIUM PLATE (F-15.02) ALL OVER.

REPAIR

(SAME AS REFINISH)

125/ MACHINE FINISH

SHOT PEEN: 0.017-0.046 SHOT SIZE
0.012 A2 INTENSITY

MATERIAL: 4340 STEEL, 180-200 KSI
ALL DIMENSIONS ARE IN INCHES

69-38824-5 Bolt Repair and Refinish
Figure 601

57-53-30

REPAIR 5-1
Page 602
Mar 01/2006



COMPONENT MAINTENANCE MANUAL

ASSEMBLY

1. General

- A. This procedure has the necessary data to assemble the outboard flap mid/aft flap assembly.
- B. Refer to the Standard Overhaul Practices Manual (SOPM) for the SOPM subjects identified in this procedure.
- C. Refer to IPL Figure 1 for item numbers.

2. Assembly (IPL Figure 1) (unless shown differently)

- A. Consumable Materials

NOTE: Equivalent substitutes may be used.

Reference	Description	Specification
A00247	Sealant - Pressure And Environmental - Chromate Type	BMS 5-95
C00913	Compound - Corrosion Inhibiting Material, Nondrying Resin Mix	BMS 3-27
D00015	Grease - Aircraft Bearing (Use BMS 3-24 until existing stocks are depleted, BMS 3-33 supersedes BMS 3-24)	BMS3-24 (Superseded by BMS 3-33)

- B. References

Reference	Title
CMM 57-53-18	OUTBOARD WING TRAILING EDGE MIDFLAP ASSEMBLY
CMM 57-53-20	AFT FLAP ASSEMBLY
CMM 57-53-36	OUTBOARD FLAP CARRIAGE ASSEMBLY
SOPM 20-50-01	BOLT AND NUT INSTALLATION
SOPM 20-60-02	FINISHING MATERIALS
SOPM 20-60-03	LUBRICANTS
SOPM 20-60-04	MISCELLANEOUS MATERIALS

- C. Procedure

NOTE: For bolt and nut installation, refer to SOPM 20-50-01. For finishing materials, refer to SOPM 20-60-02. For lubricants, refer to SOPM 20-60-03. For miscellaneous materials, refer to SOPM 20-60-04.

- (1) Use standard industry practices and these special steps.
- (2) Carriage assembly (370, 375, 377, 378).
 - (a) Apply a thin layer of compound, C00913 to the base of the 65-47925 and 65-47926 support fittings (CMM 57-53-18). Be careful not to let this compound, C00913 get on lubricated surfaces or joints that move. Then apply a light coating of grease, D00015 to OD of bearing and install carriage assembly into midflap carriage support with these parts (Ref CMM 57-53-18): retainers (145, 150, IPL Fig. 5; 120, IPL Fig. 6), bolt (150, IPL Fig. 5; 125, IPL Fig. 6); washer (155, IPL Fig. 5; 130, IPL Fig. 6), and nut (160, IPL Fig. 5; 135, IPL Fig. 6).

57-53-30

ASSEMBLY

Page 701

Nov 01/2008



COMPONENT MAINTENANCE MANUAL

- 1) Make sure chamfered side of the retainer is aft and the flange of the retainer touches the bearing.
- 2) Make sure you put the bolthead on the aft side and install the bolt with wet sealant, A00247.
- (b) Install these parts (Ref CMM 57-53-36, IPL Fig. 1): bearing retainer bolt (465), washers (470, 475) and nut (490), with sealant, A00247. Be sure to put the bolthead on the inboard side.
- (c) Attach safety link (105) with bolt (465) and bushing (75). Install bolt (70) with wet sealant, A00247.
- (3) Attach afflap assembly (390, 395) to midflap assembly (380, 385).
 - (a) Make sure each pair of top and bottom deadweight rollers are adjusted identically between opposite sides of carriage support at all four locations. To do this, look at the rollers or the location of the eccentric lock relative to the bore upon partial withdrawal of the eccentric bushing (ASSEMBLY, Figure 701).
 - (b) Remove, if necessary, these parts (Ref CMM 57-53-20, IPL Fig. 1): bottom flight rollers (207A, 210) and mating bushings with attaching bolts (115, 120, 125, 130) and related washers and nuts.
 - (c) Install afflap assembly into midflap assembly with top flight rollers and both top and bottom deadweight rollers into afflap tracks per ASSEMBLY, Figure 701. Slide afflap assembly forward into midflap.
 - (d) Install the bottom flight rollers with their bolts, washers, nuts, and cotter pins. Apply a light coat of grease, D00015 to the bolts before installation. Do not let the grease, D00015 get on the threads.
- (4) Adjust afflap assembly (390, 395) to midflap assembly (380, 385).
 - (a) Extend the aft flap and position it so that the distance from the aft edge of the bottom flight rollers to the aft edge of the afflap track is 0.100 - 0.300 inch at the inboard track location and 0.230 - 0.330 inch at the outboard track location.
 - (b) Make sure the top and bottom deadweight rollers touch the track flanges. Adjust the bottom deadweight rollers to get a maximum gap of 0.040 inch (units 65-46435-237, -238, -273, -274), or 0.025 inch (all other 65-46435-series units) between the bottom flight roller and the track. Adjust the bottom deadweight rollers as follows:
 - 1) Remove cotter pin, nut, and washer from the bottom deadweight roller bolt.
 - 2) Pull the eccentric bushing sufficiently away from the eccentric lock to let you turn the eccentric bushing.
 - 3) Turn the eccentric bushing to get the correct gap and engage the eccentric bushing in the eccentric lock. If necessary, turn the bushing to the next notch to engage. When the gap cannot be decreased with the adjacent notches, turn the eccentric bushing 90° in one direction or the other, and try again. Do not rotate eccentric bushings independently. Adjustments must be made equally to both sides.
 - 4) Install washer and nut on the bottom deadweight roller bolt. Tighten nut 12 - 15 pound-inches.

57-53-30

ASSEMBLY

Page 702

Jul 01/2008



COMPONENT MAINTENANCE MANUAL

CAUTION: LOAD MUST BE APPLIED TO AN AREA OF 20 SQUARE INCHES OR MORE TO PREVENT FLAP SKIN DAMAGE.

- (c) Adjust the top deadweight rollers, if necessary, to touch the track flange. The procedure used to adjust the top deadweight rollers is the same as the procedure used to adjust the bottom deadweight rollers.

CAUTION: LOAD MUST BE APPLIED TO AN AREA OF 20 SQUARE INCHES OR MORE TO PREVENT FLAP SKIN DAMAGE.

- (d) Apply 15 to 30 pounds downward pressure on the aftflap in the area of the tracks. Make sure the deadweight rollers are against the track flanges and the flight rollers are clear. Apply the downward pressure on an area of not less than 20 square inches to prevent damage to the skin.
 - (e) Apply 15 to 30 pounds upward pressure on the aftflap in the area of the tracks. Make sure the flight rollers touch the track flanges and the deadweight rollers are away from the track flanges. Apply the upward pressure on an area of not less than 20 square inches to prevent flap skin damage.
 - (f) Move aftflap fore and aft for the full length of travel and make sure the rollers move freely. If the rollers do not move freely, adjust the deadweight rollers (as specified before) to get a maximum gap of 0.040 inch (65-46435-237, -238, -273, -274) or 0.025 (all other 65-46435-series units), between the bottom flight roller and the track.
 - (g) Lubricate the bottom flight rollers through the lube fittings in their attaching bolts.
 - (h) Install the cotter pins on the nuts.
- (5) Aftflap assembly (390, 395) to midflap assembly (300, 385) adjustments.

CAUTION: LOAD MUST BE APPLIED TO AN AREA OF 20 SQUARE INCHES OR MORE TO PREVENT FLAP SKIN DAMAGE.

- (a) Retract aftflap and move it to get a 0.060-0.090-inch stowed gap between the lower aft edge of the midflap and the leading edge of the aftflap (ASSEMBLY, Figure 701).
 - (b) Apply 15 to 20 pounds of upward pressure on the aftflap in the area of the tracks, to an area of no less than 20 square inches. If necessary, change the shim thickness of the aftflap tracks and track supports if necessary to get the clearances specified below.
 - 1) Make sure the stowed gap between lower edge of midflap and leading edge of aftflap is a maximum of 0.13 inch for the full length of the flap.
 - 2) Make sure the clearance between the upper midflap trailing edge and to the aftflap is 0.01-0.20 inch.
 - 3) Make sure the mismatch between the lower surface of the midflap and the aftflap is a maximum of 0.06 inch.
- (6) Examine the seal at the leading edge of the aftflap (ASSEMBLY, Figure 702). When fully retracted, the aftflap leading edge must compress the seal between 10 and 30 percent. If the seal does not touch the aftflap, loosen the nuts of the seal retainer and position the seal retainer to get seal compression. Tighten the nuts evenly along the length of retainer.

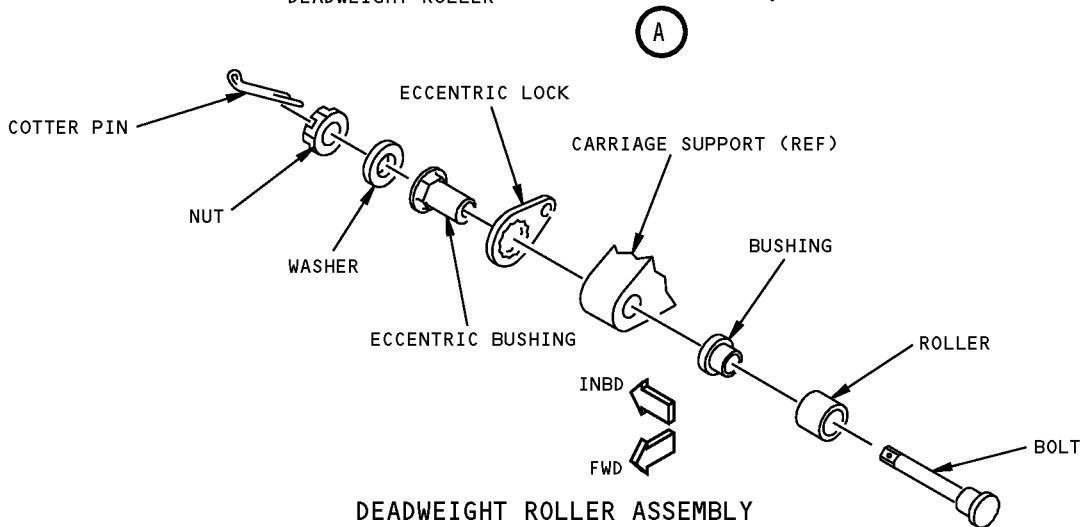
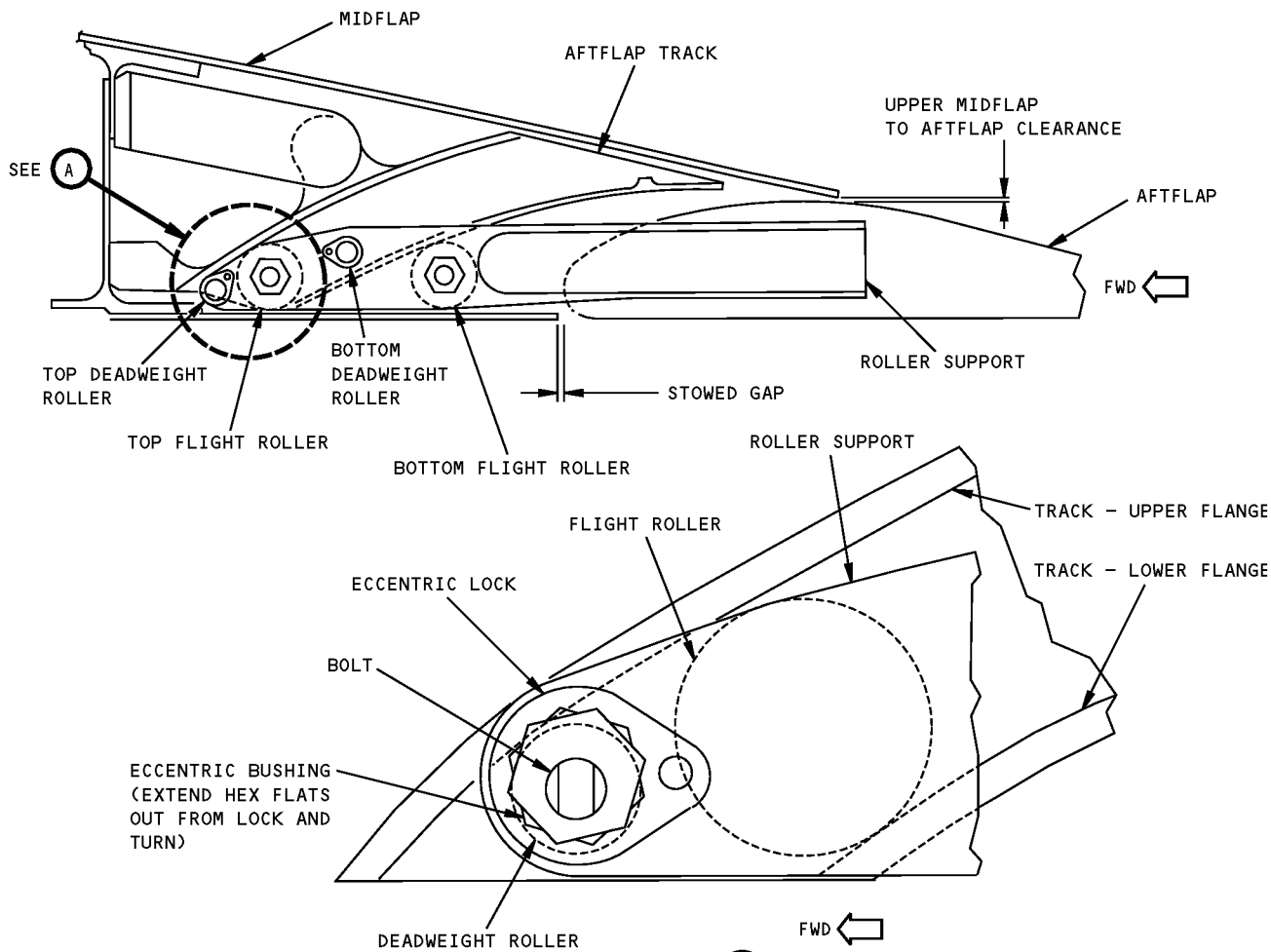
57-53-30

ASSEMBLY

Page 703

Mar 01/2006

COMPONENT MAINTENANCE MANUAL



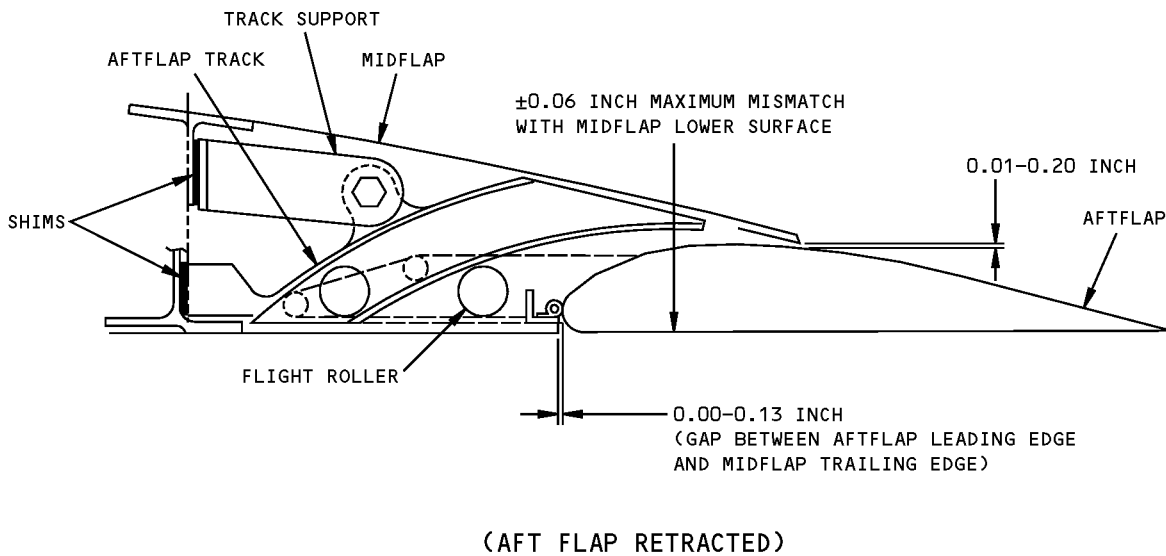
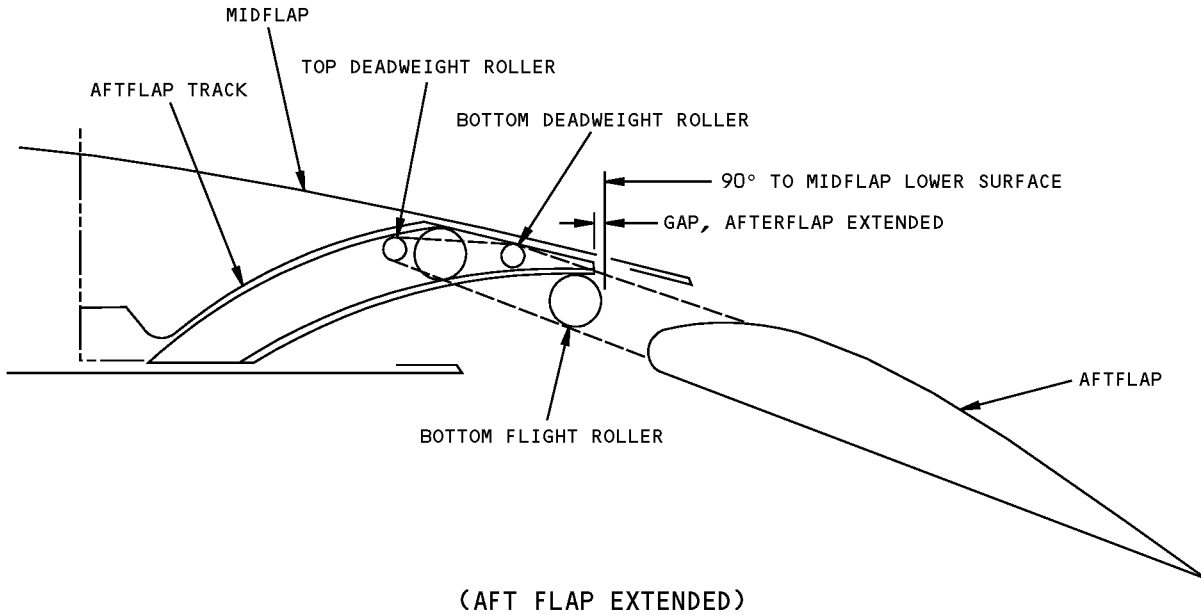
DEADWEIGHT ROLLER ASSEMBLY
 EXAMPLE (4 LOCATIONS)
 (FOR DETAILS SEE CMM 57-53-20)

Aft Flap Assembly and Adjustment
 Figure 701 (Sheet 1 of 2)

57-53-30

ASSEMBLY
 Page 704
 Mar 01/2006

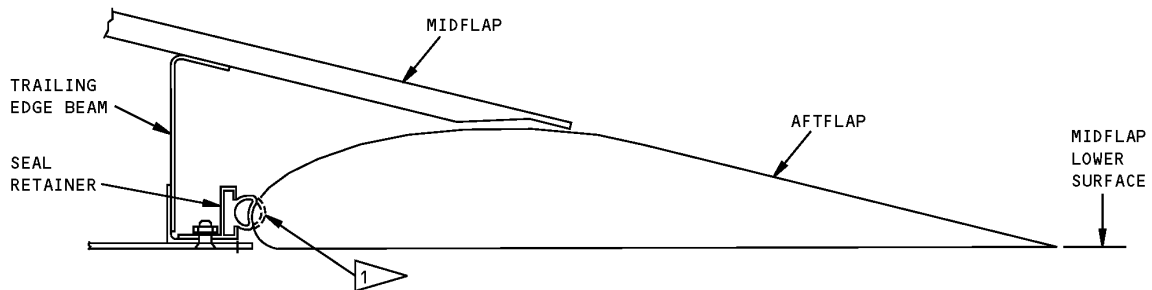
COMPONENT MAINTENANCE MANUAL



Aft Flap Assembly and Adjustment
Figure 701 (Sheet 2 of 2)

57-53-30

ASSEMBLY
Page 705
Mar 01/2006

COMPONENT MAINTENANCE MANUAL

- 1 ADJUST THE SEAL RETAINER AS NECESSARY TO GET THE SEAL TO TOUCH THE AFTFLAP WHEN THE AFTFLAP IS FULLY RETRACTED. SEAL COMPRESSION OF 10-30 PERCENT IS ACCEPTABLE.

Aftflap Seal Compression Adjustment
Figure 702

57-53-30

ASSEMBLY

Page 706

Mar 01/2006



COMPONENT MAINTENANCE MANUAL

FITS AND CLEARANCES

(NOT APPLICABLE)

57-53-30

FITS AND CLEARANCES

Page 801

Mar 01/2006



COMPONENT MAINTENANCE MANUAL

SPECIAL TOOLS, FIXTURES, AND EQUIPMENT

(NOT APPLICABLE)

57-53-30

SPECIAL TOOLS, FIXTURES, AND EQUIPMENT

Page 901

Mar 01/2006



COMPONENT MAINTENANCE MANUAL

ILLUSTRATED PARTS LIST

1. Introduction

- A. The Illustrated Parts List (IPL) contains an illustration and a list of component parts you can repair or replace. The Illustrated Parts Catalog (IPC) shows how to use the Boeing part number system.
- B. This shows how parts are related: The relation of each item to its next higher assembly (NHA) is shown in the NOMENCLATURE column. Use the indenture system that follows:

1	2	3	4	5	6	7
.	Assembly					
.	Attaching parts for assembly					
.	.	Detail parts for assembly				
.	.	Subassembly				
.	.	Attaching parts for subassembly				
.	.	.	Detail parts for subassembly			
.	.	.	Sub-subassembly			
.	.	.	Attaching parts for subassembly			
.	.	.	.	Details parts for sub-subassembly		
						Detail Installation Parts (Included only if installation parts may be sent to the shop as part of assembly)

- C. Each top assembly is given one use code letter (A, B, C, etc.) in the USAGE CODE column. All subsequent component parts in the list can have one or more of the use code letters to show effectivity to top assemblies. A component part without a use code applies to all top assemblies.
- D. An alphabetical letter is added after the item number for optional parts, parts changed by a Service Bulletin, configuration differences (except left-handed and right-handed parts), last engineering releases, and parts added between item numbers in a sequence. The alphabetical letter will not be shown on the illustration for equivalent parts of the same part number.
- E. Color-coded parts are identified with a single digit alpha following the dash number or with "SP" suffix. If the "SP" suffix is used, it represents consolidation of all color codes applicable for a given usage which are not separately listed. Orders for color-coded parts should include the registry number of the airplane for which the parts are ordered.
- F. If a part number is 15 characters long but will not fit in the part number column, the part number will be displayed with a "~" at the end of the line and will be continued on the next line. The "~" denotes that the part number continues on the next line.
- G. Parts changed by a Service Bulletin are shown by PRE SB XXXX and POST SB XXXX added to the NOMENCLATURE column.
- (1) When a new top assembly is added by a Service Bulletin, PRE SB XXXX and POST SB XXXX will be added at the top assembly level only. The configuration differences at the detail part level are shown by use code letters.
- (2) When the top assembly part number is not changed by the Service Bulletin, PRE SB XXXX and POST SB XXXX will be added at the detail level.
- H. Interchangeable Parts

57-53-30

ILLUSTRATED PARTS LIST

Page 1001

Nov 01/2008



COMPONENT MAINTENANCE MANUAL

Optional (OPT)	The part is optional to and interchangeable with other parts that have the same item number.
Replaces, Replaced by and not interchangeable with (REPLACES, REPLACED BY AND NOT INTCHG/W)	The part replaces and is not interchangeable with the initial part.
Replaces, Replaced by (REPLACES, REPLACED BY)	The part replaces and is interchangeable with, or is an alternative to, the initial part.

VENDOR CODES

Code	Name
09455	RBC TRANSPORT DYNAMICS CORP 3131 W SEGERSTROM AVE SANTA ANA, CALIFORNIA 92704-5872 FORMERLY TRANSPORT DYNAMICS AEROSPACE DIV; FABROID DIV TRANSPORT DYNAMICS V17571 & LEAR SEIGLER INC TRANSPORT DIV V98076; FORMERLY BFM TRANSPORT DYNAMICS
11815	CHERRY AEROSPACE FASTENERS DIV OF TEXTRON 1224 EAST WARNER AVENUE PO BOX 2157 SANTA ANA, CALIFORNIA 92707-0157 FORMERLY IN LOS ANGELES, CALIF , FORMERLY CHERRY FASTENERS TOWNSEND DIV OF TEXTRON INC V71087
15653	ALCOA GLOBAL FASTENERS INC DIV KAYNAR PRODUCTS 800 S STATE COLLEGE BLVD FULLERTON, CALIFORNIA 92831-3001 FORMERLY VK6405 MICRODOT AEROSP LTD; FORMERLY KAYNAR TECH FORMERLY FAIRCHILD FASTENERS KAYNAR DIV
15860	NEW HAMPSHIRE BALL BEARINGS, INC ASTRO DIVISION 155 LEXINGTON AVENUE LACONIA, NEW HAMPSHIRE 03246-2937 FORMERLY ASTRO BEARING CORP, LOS ANGELES, CALIF.
17446	HUCK INTL INC AEROSPACE FASTENER DIV 900 WATSON CENTER ROAD CARSON, CALIFORNIA 90745-4201 FORMERLY V32134 REXNORD INC; FORMERLY V97928 HUCK INTL

57-53-30

ILLUSTRATED PARTS LIST

Page 1002

Nov 01/2006



COMPONENT MAINTENANCE MANUAL

Code	Name
52828	REPUBLIC FASTENER MFG CORP 1300 RANCHO CONEJO BLVD NEWBURY PARK, CALIFORNIA 91320-1405 FORMERLY IN SYLMAR, CALIFORNIA
56878	SPS TECHNOLOGIES INC AEROSPACE AND INDUSTRIAL PRODUCTS DIV 301 HIGHLAND AVE JENKINTOWN, PENNSYLVANIA 19046 FORMERLY STANDARD PRESSED STEEL FORMERLY IN SALT LAKE, UTAH
57606	REXNORD CORP PSI BEARINGS DIV 2175 UNION PL SIMI VALLEY, CALIFORNIA 93065-1661 FORMERLY PSI BEARINGS
5M902	ALCOA GLOBAL FASTENERS INC, DIV OF VOI-SHAN PRODUCTS 3000 W LOMITA BLVD TORRANCE, CALIFORNIA 90505-5103 FORMERLY FAIRCHILD INC INC FAIRCHILD AEROSPACE FASTENERS DIV
72962	HARVARD INDUSTRIES INC 3 WERNER WAY SUITE 210 LEBANON, NEW JERSEY 08833 FORMERLY ESNA V7A079 FORMERLY ELASTIC STOP NUT IN UNION, NJ
73197	HI-SHEAR TECHNOLOGY CORP 2600 SKYPARK DRIVE TORRANCE, CALIFORNIA 90509
92215	FAIRCHILD IND INC FAIRCHILD AEROSPACE FASTENER DIV 3010 W LOMITA BLVD TORRANCE, CALIFORNIA 90505-5102 FORMERLY VOI-SHAN IN CULVER CITY, CALIF
97613	SARGENT CONTROLS & AEROSPACE/KAHR BEARING DIV 5675 W BURLINGAME RD TUCSON, ARIZONA 85743 FORMERLY AETNA STEEL PROD KAHR BEARING DIV V96579 FORMERLY SARGENT IND KAHR BEARING DIV, BURBANK, CALIFORNIA

57-53-30

ILLUSTRATED PARTS LIST

Page 1003

Jul 01/2006



COMPONENT MAINTENANCE MANUAL

Code	Name
S0352	NIPPON MINIATURE BEARING CO LTD TOKYO, JAPAN

57-53-30

ILLUSTRATED PARTS LIST

Page 1004

Jul 01/2006



COMPONENT MAINTENANCE MANUAL

NUMERICAL INDEX

PART NUMBER	AIRLINE PART NUMBER	FIGURE	ITEM	UNITS PER ASSEMBLY
03-506-04E005		1	140B	1
		1	260B	1
102LH9075-5W		1	45	6
2TCC06		1	138	8
		1	138	8
		1	178	6
		1	178	6
		1	248	3
		1	248	3
		1	390D	1
		1	395D	1
65-46435-277SP		1	390E	1
65-46435-278SP		1	395E	1
65-46435-281SP		1	390F	1
65-46435-282SP		1	395F	1
65-46435-303SP		1	390G	1
65-46435-304SP		1	395G	1
65-46435-317SP		1	390H	1
65-46435-318SP		1	395H	1
65-46435-329SP		1	390J	1
65-46435-330SP		1	395J	1
65-46435-331SP		1	390K	1
65-46435-332SP		1	395K	1
65-46435-333SP		1	390L	1
65-46435-334SP		1	390M	1
65-46435-335SP		1	395L	1
65-46435-336SP		1	395M	1
		1	390N	1
65-46435-337SP		1	395N	1
65-46435-338SP		1	390P	1
65-46435-339SP		1	395P	1
65-46435-340SP		1	390Q	1
65-46435-341SP		1	395Q	1
65-46435-342SP		1	390T	1
65-46435-365SP		1	395T	1

57-53-30

ILLUSTRATED PARTS LIST

Page 1005

Jul 01/2006



COMPONENT MAINTENANCE MANUAL

PART NUMBER	AIRLINE PART NUMBER	FIGURE	ITEM	UNITS PER ASSEMBLY
65-46435-366SP		1	395T	1
65-46481-105		1	370A	1
65-46481-106		1	375A	1
65-46481-113		1	370B	1
65-46481-114		1	375B	1
65-46481-115		1	370C	1
65-46481-116		1	375C	1
65-46481-117		1	370H	1
65-46481-118		1	375H	1
65-46481-119		1	370D	1
		1	370Q	1
65-46481-120		1	375D	1
		1	375Q	1
65-46481-121		1	370E	1
		1	370R	1
65-46481-122		1	375E	1
		1	375R	1
65-46481-123		1	370I	1
65-46481-124		1	375I	1
65-46481-133		1	370L	1
65-46481-134		1	375L	1
65-46481-135		1	370M	1
65-46481-136		1	375M	1
65-46481-143		1	370F	1
		1	370S	1
65-46481-144		1	375F	1
		1	375S	1
65-46481-145		1	370G	1
		1	370T	1
65-46481-146		1	375G	1
		1	375T	1
65-46481-147		1	370J	1
		1	370N	1
65-46481-148		1	375J	1
		1	375N	1

57-53-30

ILLUSTRATED PARTS LIST

Page 1006

Nov 01/2007



COMPONENT MAINTENANCE MANUAL

PART NUMBER	AIRLINE PART NUMBER	FIGURE	ITEM	UNITS PER ASSEMBLY
65-46481-149		1	370K	1
		1	370P	1
65-46481-150		1	375K	1
		1	375P	1
65-46481-97		1	370	1
65-46481-98		1	375	1
65-73573-3		1	193	1
65-73573-4		1	197	1
65C26320-15SP		1	380	1
65C26320-16SP		1	385	1
65C26320-17SP		1	380A	1
65C26320-18SP		1	385A	1
65C26320-21SP		1	380D	1
65C26320-22SP		1	385D	1
65C26320-23SP		1	380C	1
65C26320-24SP		1	385C	1
65C26320-25SP		1	380E	1
65C26320-26SP		1	385E	1
65C26320-29SP		1	380F	1
65C26320-30SP		1	385F	1
65C26320-33SP		1	380H	1
65C26320-34SP		1	385H	1
65C26320-35SP		1	380J	1
65C26320-36SP		1	385J	1
65C26320-37SP		1	380K	1
65C26320-38SP		1	385K	1
65C26320-7SP		1	380B	1
65C26320-8SP		1	385B	1
65C26321-10		1	315A	1
65C26321-15		1	320A	1
65C26321-16		1	325A	1
65C26321-31		1	290	1
65C26321-32		1	295	1
65C26321-35SP		1	110	1
65C26321-36SP		1	115	1

57-53-30

ILLUSTRATED PARTS LIST

Page 1007

Nov 01/2007



COMPONENT MAINTENANCE MANUAL

PART NUMBER	AIRLINE PART NUMBER	FIGURE	ITEM	UNITS PER ASSEMBLY
65C26321-515		1	310	1
65C26321-516		1	315	1
65C26321-517		1	320	1
65C26321-518		1	325	1
65C26321-51SP		1	110A	1
65C26321-523SP		1	110B	1
65C26321-524SP		1	115B	1
65C26321-529		1	330	1
65C26321-52SP		1	115A	1
65C26321-530		1	335	1
65C26321-531		1	340	1
65C26321-532		1	345	1
65C26321-533		1	300	2
65C26321-534		1	305	2
65C26321-55		1	330A	1
65C26321-56		1	335A	1
65C26321-57SP		1	110C	1
65C26321-58SP		1	115C	1
65C26321-59SP		1	110D	1
65C26321-60SP		1	115D	1
65C26321-61		1	330B	1
65C26321-62		1	335B	1
65C26321-63		1	340A	1
65C26321-64		1	345A	1
65C26321-65		1	320B	1
65C26321-66		1	325B	1
65C26321-67		1	310B	1
65C26321-68		1	315B	1
65C26321-69SP		1	110E	1
65C26321-7		1	365	1
65C26321-70SP		1	115E	1
65C26321-79SP		1	110G	1
		1	110H	1
65C26321-80SP		1	115G	1
		1	115H	1

57-53-30

ILLUSTRATED PARTS LIST

Page 1008

Nov 01/2007



COMPONENT MAINTENANCE MANUAL

PART NUMBER	AIRLINE PART NUMBER	FIGURE	ITEM	UNITS PER ASSEMBLY
65C26321-9		1	310A	1
65C26326-1		1	120A	1
65C26326-10		1	125	1
65C26326-11		1	200	1
65C26326-12		1	205	1
65C26326-13		1	150	1
65C26326-14		1	155	1
65C26326-15		1	270	1
65C26326-16		1	275	1
65C26326-2		1	125A	1
65C26326-3		1	200A	1
65C26326-4		1	205A	1
65C26326-5		1	150A	1
65C26326-6		1	155A	1
65C26326-7		1	270A	1
65C26326-8		1	275A	1
65C26326-9		1	120	1
65C34777-5		1	160	1
65C34777-6		1	165	1
65C34777-7		1	190	1
65C34777-8		1	195	1
65C34946-10SP		1	5D	RF
65C34946-13SP		1	1F	RF
65C34946-14SP		1	5F	RF
65C34946-19SP		1	1G	RF
65C34946-1SP		1	1	RF
65C34946-20SP		1	5G	RF
65C34946-21SP		1	1H	RF
65C34946-22SP		1	5H	RF
65C34946-23SP		1	1J	RF
65C34946-24SP		1	5J	RF
65C34946-2SP		1	5	RF
65C34946-33SP		1	1M	RF
65C34946-34SP		1	5M	RF
65C34946-3SP		1	1A	RF

57-53-30

ILLUSTRATED PARTS LIST

Page 1009

Nov 01/2007



COMPONENT MAINTENANCE MANUAL

PART NUMBER	AIRLINE PART NUMBER	FIGURE	ITEM	UNITS PER ASSEMBLY
65C34946-4SP		1	5A	RF
65C34946-5SP		1	1B	RF
65C34946-6SP		1	5B	RF
65C34946-7SP		1	1C	RF
65C34946-8SP		1	5C	RF
65C34946-9SP		1	1D	RF
69-37238-2		1	105	2
69-38824-5		1	85	2
69-43507-2		1	100	2
69-43507-4		1	95	2
69-73573-1		1	163	1
69-73573-2		1	167	1
69-74619-2		1	355	1
69-77632-1		1	50A	3
69-77632-2		1	55A	3
69-77632-3		1	60A	3
69-77632-4		1	65A	3
69-77779-1		1	60	3
69-77779-2		1	65	3
69-77780-1		1	50	3
69-77780-2		1	55	3
ABW4V110		1	140A	1
		1	260A	1
AMB5V4002		1	140E	1
		1	260E	1
AN320-7		1	90	2
AN960-516L		1	40	6
AW4V73		1	140D	1
		1	260D	1
BACB28AP05P027		1	180	1
BACB28AT07B027C		1	185	1
BACB28W4B027		1	180A	1
BACB28W6B027		1	185A	1
BACB30MR3K6		1	220	1
		1	225	3

57-53-30

ILLUSTRATED PARTS LIST

Page 1010

Nov 01/2007



COMPONENT MAINTENANCE MANUAL

PART NUMBER	AIRLINE PART NUMBER	FIGURE	ITEM	UNITS PER ASSEMBLY
BACB30NM5K21		1	70	2
BACB30NN3K3		1	285	2
BACB30NN3K5		1	280	21
BACB30NN5K18		1	35	6
BACB30NX6K		1	130	8
		1	170	6
		1	210	3
		1	215	2
		1	220A	1
BACB30UB6K		1	133	8
		1	173	6
		1	213	3
		1	215A	2
BACC30BF6		1	138	8
		1	178	6
		1	248	3
BACC30X6		1	135	8
		1	175	6
		1	240A	1
		1	245	3
		1	250	2
		1	250A	2
BACN10JC5CD		1	45	6
BACR15CE4AD5		1	350	7
BACR15CE6AD8		1	360	23
BACW10BP3DP		1	230	1
		1	235	3
BRH10C5D		1	45	6
H51650-5BAC		1	45	6
HL1187-6		1	135	8
		1	135	8
		1	135	8
		1	135	8
		1	175	6
		1	175	6

57-53-30

ILLUSTRATED PARTS LIST

Page 1011

Nov 01/2007



COMPONENT MAINTENANCE MANUAL

PART NUMBER	AIRLINE PART NUMBER	FIGURE	ITEM	UNITS PER ASSEMBLY
HL87-6		1	175	6
		1	175	6
		1	240A	1
		1	240A	1
		1	240A	1
		1	240A	1
		1	245	3
		1	245	3
		1	245	3
		1	245	3
		1	250	2
		1	250	2
		1	250	2
		1	250	2
		1	250A	2
		1	250A	2
		1	250A	2
		1	250A	2
		1	135	8
		1	135	8
		1	135	8
		1	175	6
		1	175	6
		1	175	6
		1	240A	1
		1	240A	1
		1	240A	1
		1	245	3
		1	245	3
		1	245	3
		1	250	2
		1	250	2
	1	250	2	
	1	250A	2	
	1	250A	2	

57-53-30

ILLUSTRATED PARTS LIST

Page 1012

Nov 01/2007



COMPONENT MAINTENANCE MANUAL

PART NUMBER	AIRLINE PART NUMBER	FIGURE	ITEM	UNITS PER ASSEMBLY
KWB4-28		1	250A	2
		1	140C	1
		1	260C	1
MS24665-304		1	80	2
NAS1805-3N		1	240	1
NAS516-1A		1	255	3
		1	145	1
		1	265	1
NAS75-5-111		1	75A	2
P27850		1	140	1
		1	260	1
T6C524JCD		1	45	6

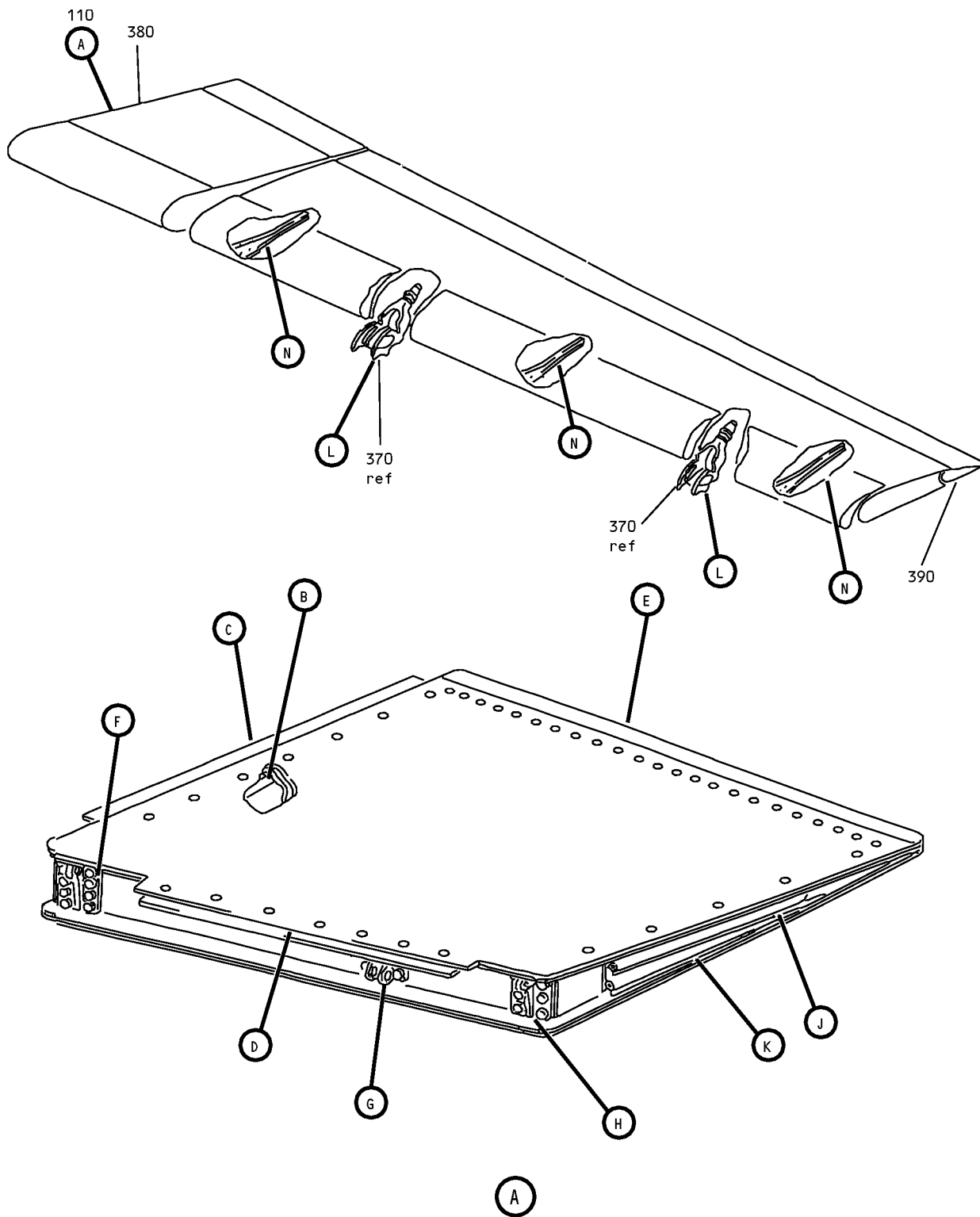
57-53-30

ILLUSTRATED PARTS LIST

Page 1013

Nov 01/2007

COMPONENT MAINTENANCE MANUAL



Outboard Flap Mid/Aft Flap Assembly
IPL Figure 1 (Sheet 1 of 9)

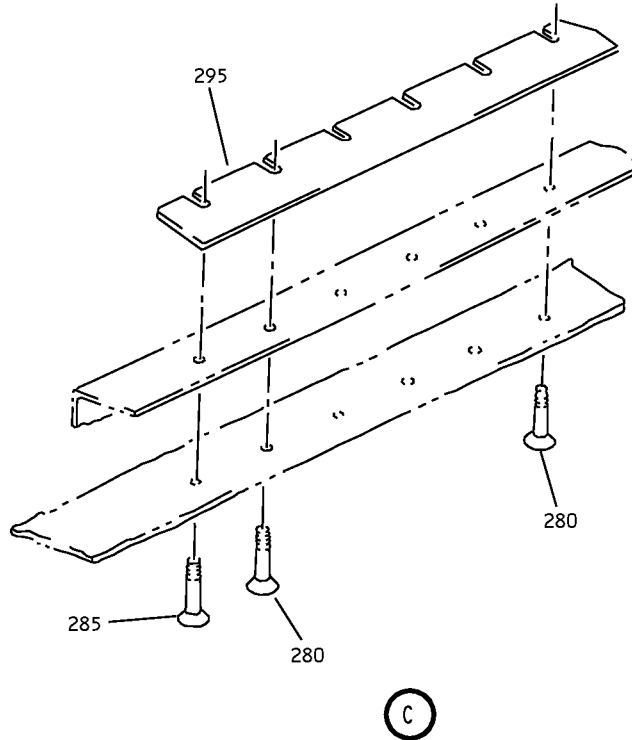
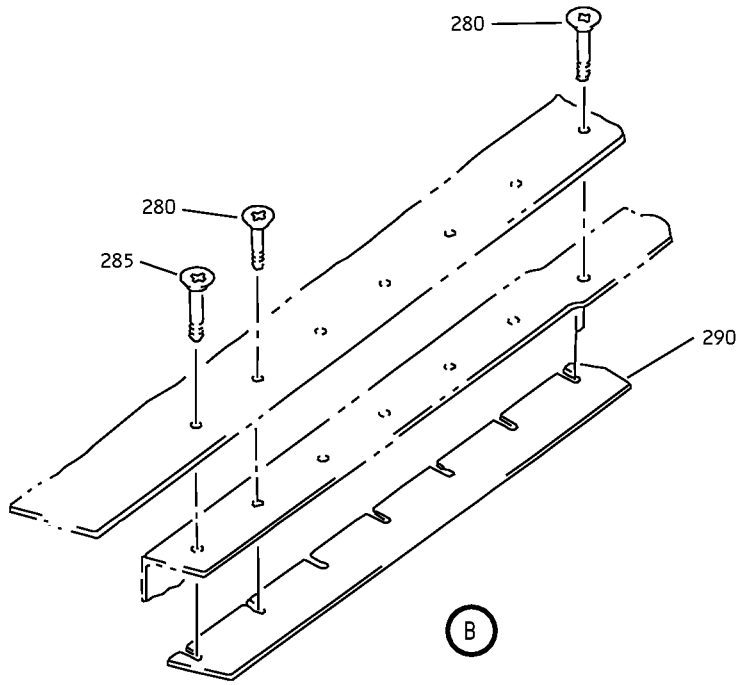
57-53-30

ILLUSTRATED PARTS LIST

Page 1014

Nov 01/2007

COMPONENT MAINTENANCE MANUAL



Outboard Flap Mid/Aft Flap Assembly
IPL Figure 1 (Sheet 2 of 9)

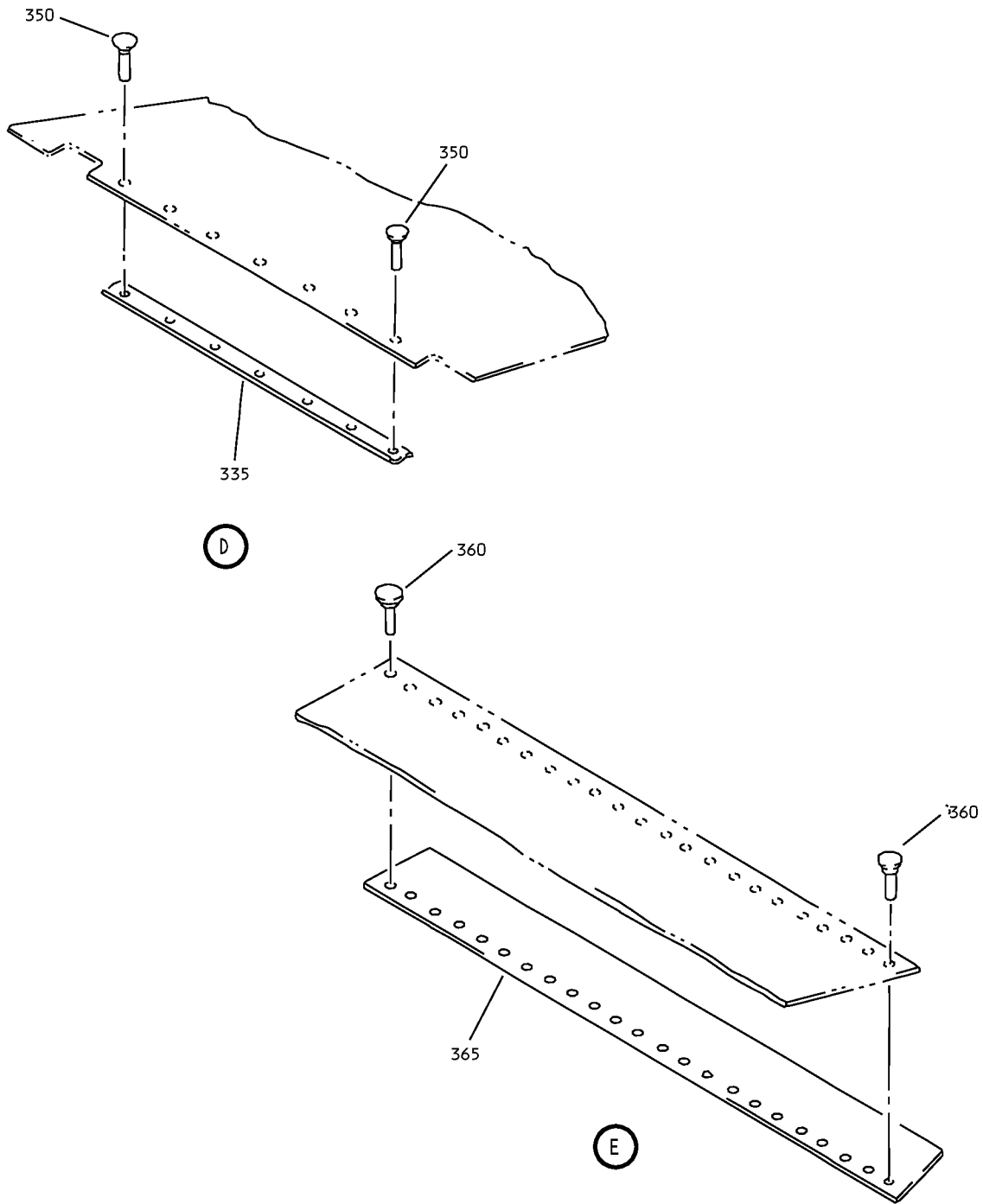
57-53-30

ILLUSTRATED PARTS LIST

Page 1015

Nov 01/2007

COMPONENT MAINTENANCE MANUAL



Outboard Flap Mid/Aft Flap Assembly
IPL Figure 1 (Sheet 3 of 9)

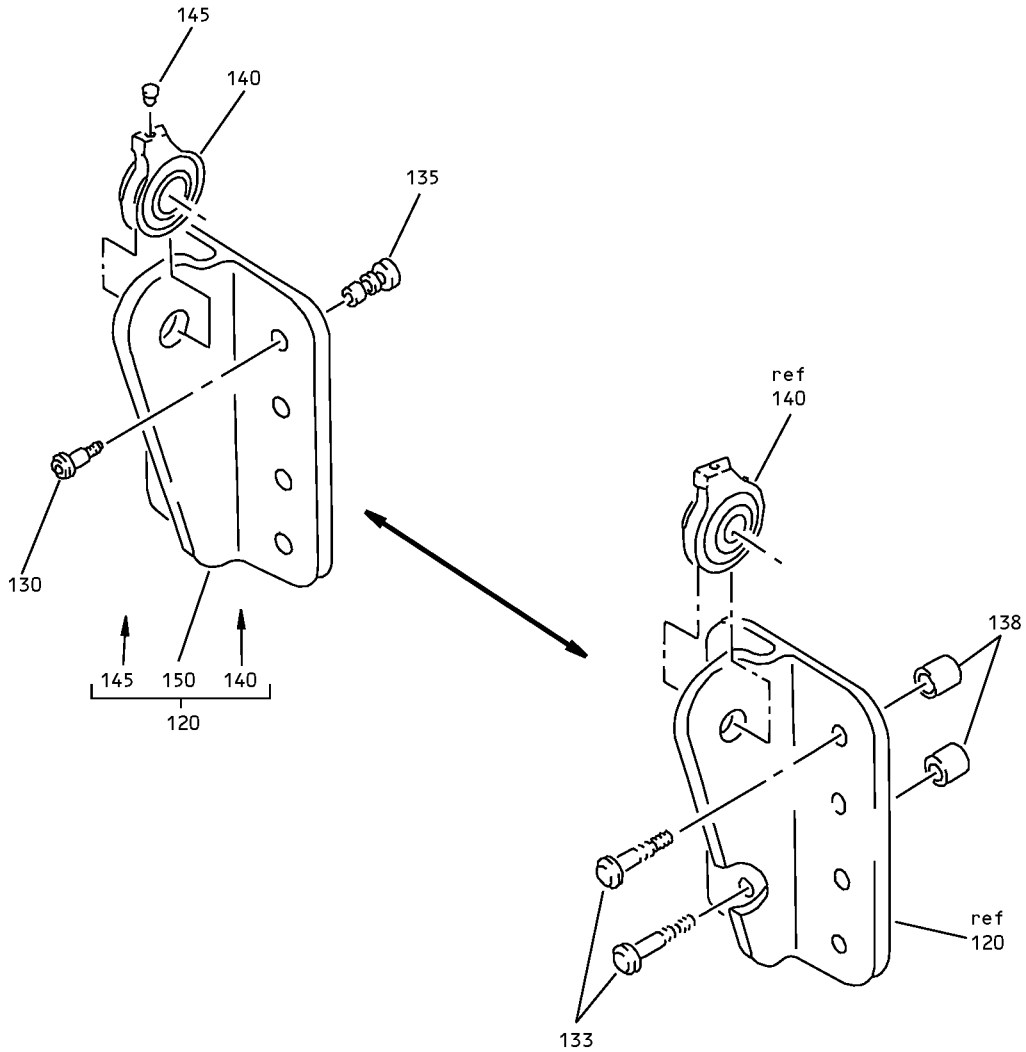
57-53-30

ILLUSTRATED PARTS LIST

Page 1016

Nov 01/2007

COMPONENT MAINTENANCE MANUAL



F

Outboard Flap Mid/Aft Flap Assembly
IPL Figure 1 (Sheet 4 of 9)

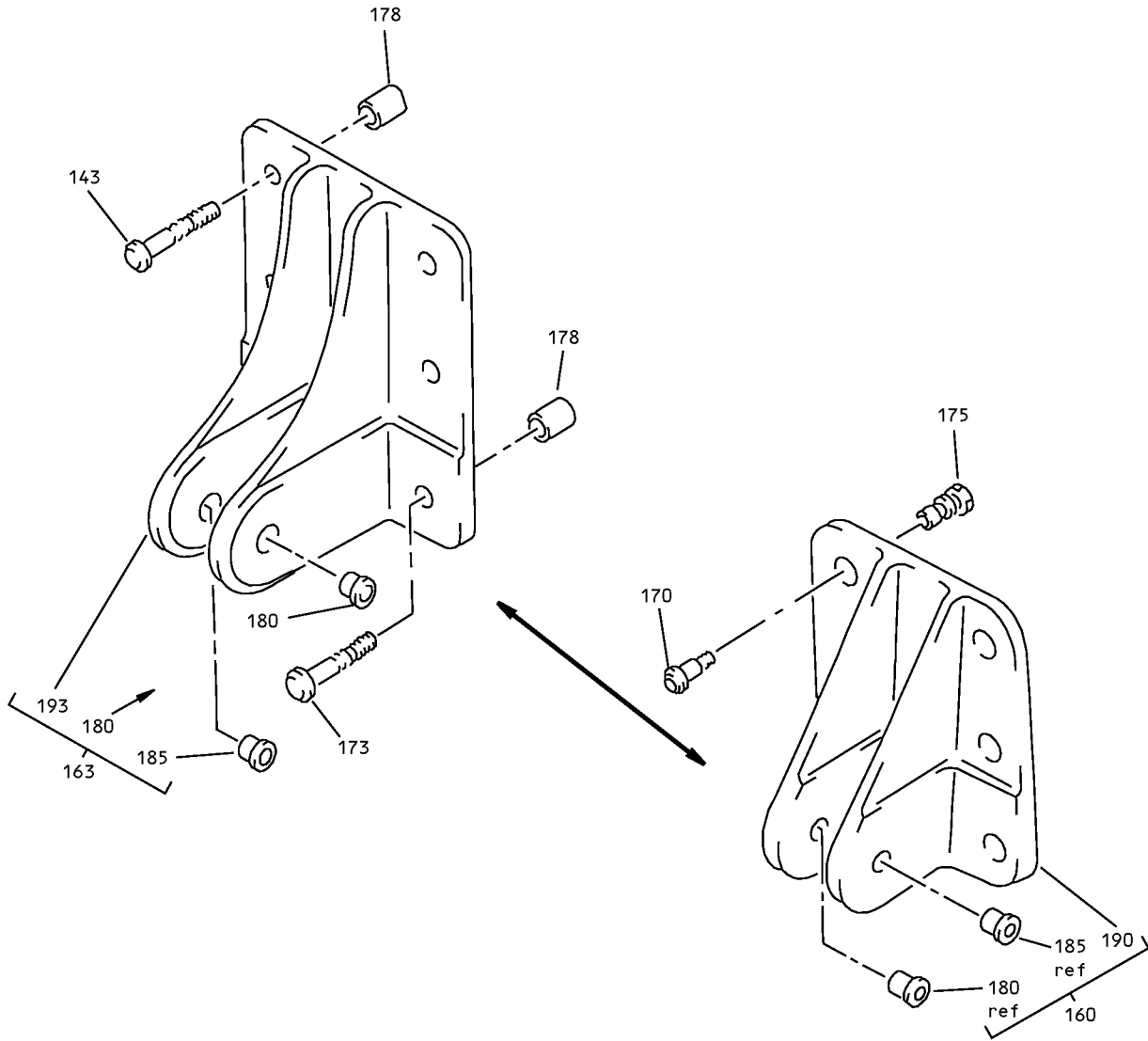
57-53-30

ILLUSTRATED PARTS LIST

Page 1017

Nov 01/2007

COMPONENT MAINTENANCE MANUAL



G

Outboard Flap Mid/Aft Flap Assembly
IPL Figure 1 (Sheet 5 of 9)

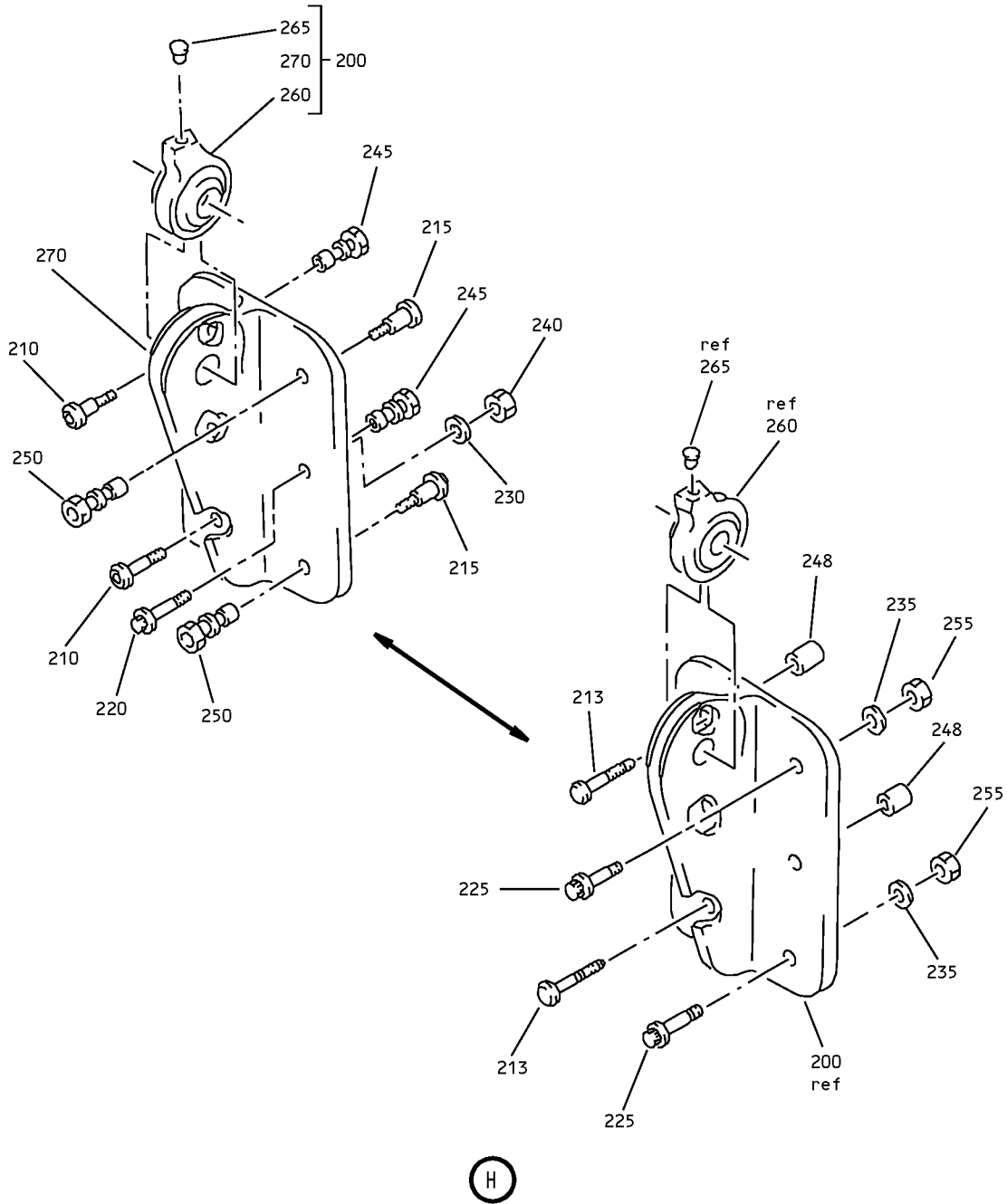
57-53-30

ILLUSTRATED PARTS LIST

Page 1018

Nov 01/2007

COMPONENT MAINTENANCE MANUAL



Outboard Flap Mid/Aft Flap Assembly
IPL Figure 1 (Sheet 6 of 9)

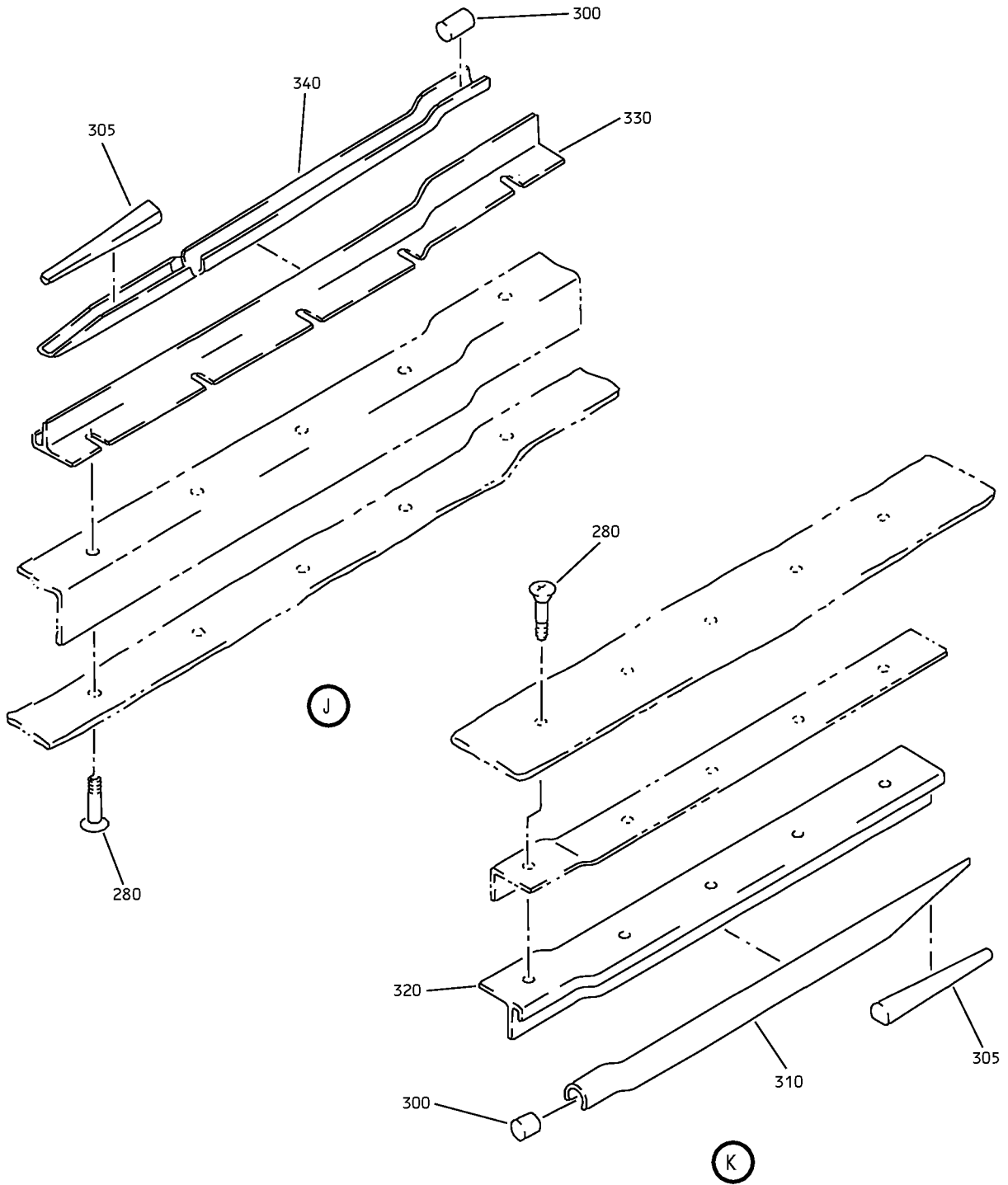
57-53-30

ILLUSTRATED PARTS LIST

Page 1019

Nov 01/2007

COMPONENT MAINTENANCE MANUAL



Outboard Flap Mid/Aft Flap Assembly
IPL Figure 1 (Sheet 7 of 9)

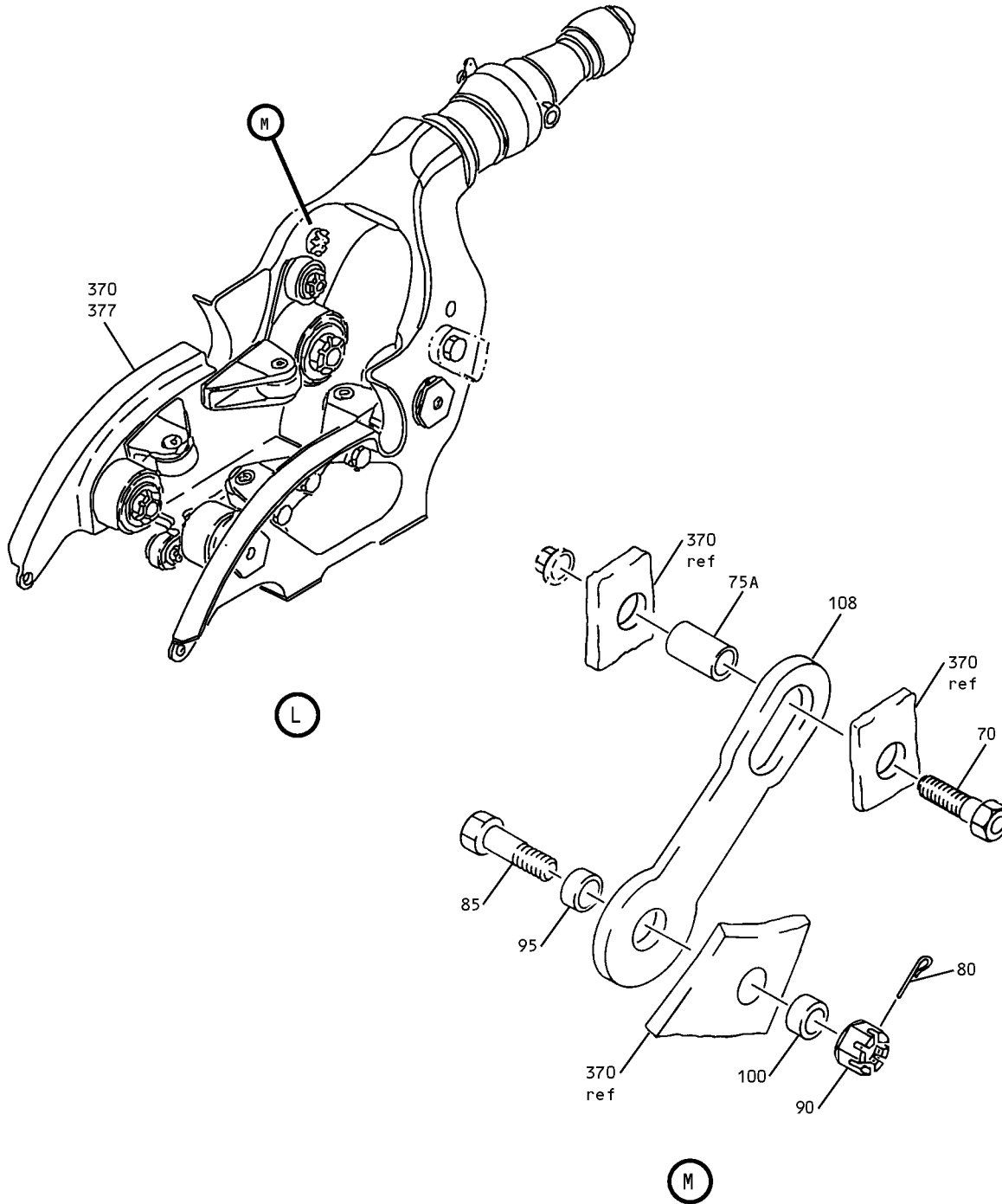
57-53-30

ILLUSTRATED PARTS LIST

Page 1020

Nov 01/2007

COMPONENT MAINTENANCE MANUAL



Outboard Flap Mid/Aft Flap Assembly
IPL Figure 1 (Sheet 8 of 9)

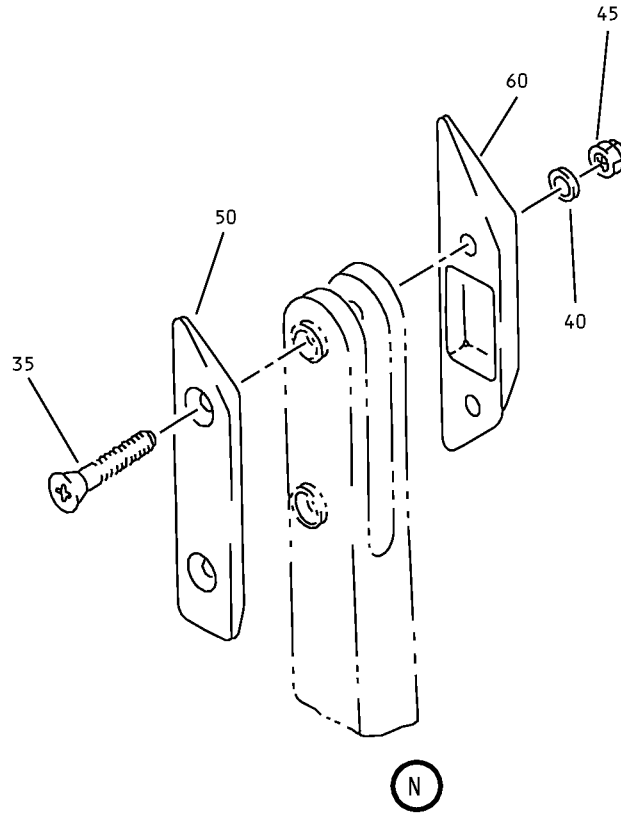
57-53-30

ILLUSTRATED PARTS LIST

Page 1021

Nov 01/2007

COMPONENT MAINTENANCE MANUAL



Outboard Flap Mid/Aft Flap Assembly
IPL Figure 1 (Sheet 9 of 9)

57-53-30

ILLUSTRATED PARTS LIST

Page 1022

Nov 01/2007



COMPONENT MAINTENANCE MANUAL

FIG/ ITEM	PART NUMBER	AIRLINE PART NUMBER	NOMENCLATURE							USAGE CODE	UNITS PER ASSY
			1	2	3	4	5	6	7		
1-											
-1	65C34946-1SP									A	RF
-1A	65C34946-3SP									B	RF
-1B	65C34946-5SP									C	RF
-1C	65C34946-7SP									G	RF
-1D	65C34946-9SP									J	RF
-1E	65C34946-11SP										
-1F	65C34946-13SP									L	RF
-1G	65C34946-19SP									Q	RF
-1H	65C34946-21SP									S	RF
-1J	65C34946-23SP									T	RF
-1K	65C34946-29SP										
-1L	65C34946-31SP										
-1M	65C34946-33SP									Y	RF
-5	65C34946-2SP									D	RF
-5A	65C34946-4SP									E	RF
-5B	65C34946-6SP									F	RF
-5C	65C34946-8SP									H	RF
-5D	65C34946-10SP									M	RF
-5E	65C34946-12SP										
-5F	65C34946-14SP									P	RF
-5G	65C34946-20SP									R	RF
-5H	65C34946-22SP									U	RF

-Item not Illustrated

57-53-30

ILLUSTRATED PARTS LIST

Page 1023

Nov 01/2007



COMPONENT MAINTENANCE MANUAL

FIG/ ITEM	PART NUMBER	AIRLINE PART NUMBER	NOMENCLATURE							USAGE CODE	UNITS PER ASSY
			1	2	3	4	5	6	7		
1-											
-5J	65C34946-24SP		FLAP ASSY-OUTBD MID/AFT (VARIABLE)							V	RF
-5K	65C34946-30SP		DELETED								
-5L	65C34946-32SP		DELETED								
-5M	65C34946-34SP		FLAP ASSY-OUTBD MID/AFT (VARIABLE)							AB	RF
10	BACB30LU4-13		DELETED								
15	BACB30LU4-15		DELETED								
20	69-78394-1		DELETED								
25	69-78394-2		DELETED								
30	69-78394-3		DELETED								
35	BACB30NN5K18		. BOLT								6
40	AN960-516L		. WASHER								6
45	BRH10C5D		. NUT (V52828) (SPEC BACN10JC5CD) (OPT T6C524JCD (V11815)) (OPT 102LH9075-5W (V72962)) (OPT H51650-5BAC (V15653))								6
50	69-77780-1		. GUIDE (OPT ITEM 50A)							A-C, G, J, L, Q, S, T, Y	3
-50A	69-77632-1		. GUIDE (OPT ITEM 50)							A-C, G, J, L, Q, S, T, Y	3
-55	69-77780-2		. GUIDE (OPT ITEM 55A)							D-F, H, M, P, R, U, V, AB	3
-55A	69-77632-2		. GUIDE (OPT ITEM 55)							D-F, H, M, P, R, U, V, AB	3
60	69-77779-1		. GUIDE (OPT ITEM 60A)							A-C, G, J, L, Q, S, T, Y	3
-60A	69-77632-3		. GUIDE (OPT ITEM 60)							A-C, G, J, L, Q, S, T, Y	3

-Item not Illustrated

57-53-30

ILLUSTRATED PARTS LIST

Page 1024

Nov 01/2007



COMPONENT MAINTENANCE MANUAL

FIG/ ITEM	PART NUMBER	AIRLINE PART NUMBER	NOMENCLATURE							USAGE CODE	UNITS PER ASSY
			1	2	3	4	5	6	7		
1-											
-65	69-77779-2		.	GUIDE						D-F, H, M, P, R, U, V, AB	3
				(OPT ITEM 65A)							
-65A	69-77632-4		.	GUIDE						D-F, H, M, P, R, U, V, AB	3
				(OPT ITEM 65)							
70	BACB30NM5K21		.	BOLT							2
75	NAS75-5-11			DELETED							
75A	NAS75-5-111		.	BUSHING							2
80	MS24665-304		.	PIN-COTTER							2
85	69-38824-5		.	BOLT							2
90	AN320-7		.	NUT							2
95	69-43507-4		.	SPACER							2
100	69-43507-2		.	SPACER							2
105	69-37238-2		.	LINK-FAIL SAFE							2
110	65C26321-35SP		.	GATE ASSY-EXHAUST						A-C, G	1
				(LIMITED USAGE)							
-110A	65C26321-51SP		.	GATE ASSY-EXHAUST						A-C, G	1
				(LIMITED USAGE)							
-110B	65C26321-523SP		.	GATE ASSY-EXHAUST						A-C, G	1
				(LIMITED USAGE)							
-110C	65C26321-57SP		.	GATE ASSY-EXHAUST						A-C, G	1
				(LIMITED USAGE)							
-110D	65C26321-59SP		.	GATE ASSY-EXHAUST						A-C, G	1
				(LIMITED USAGE)							
-110E	65C26321-69SP		.	GATE ASSY-EXHAUST						A-C, G	1
				(LIMITED USAGE)							
-110F	65C26321-69SP			DELETED							
-110G	65C26321-79SP		.	GATE ASSY-EXHAUST						A-C, G, J, L, Q	1
				(LIMITED USAGE)							
-110H	65C26321-79SP		.	GATE ASSY-EXHAUST						S, T, Y	1
-115	65C26321-36SP		.	GATE ASSY-EXHAUST						D-F, H	1
				(LIMITED USAGE)							
-115A	65C26321-52SP		.	GATE ASSY-EXHAUST						D-F, H	1
				(LIMITED USAGE)							

-Item not Illustrated

57-53-30

ILLUSTRATED PARTS LIST

Page 1025

Nov 01/2007



COMPONENT MAINTENANCE MANUAL

FIG/ ITEM	PART NUMBER	AIRLINE PART NUMBER	NOMENCLATURE							USAGE CODE	UNITS PER ASSY
			1	2	3	4	5	6	7		
1-											
-115B	65C26321-524SP		.	GATE ASSY-EXHAUST (LIMITED USAGE)						D-F, H	1
-115C	65C26321-58SP		.	GATE ASSY-EXHAUST (LIMITED USAGE)						D-F, H	1
-115D	65C26321-60SP		.	GATE ASSY-EXHAUST (LIMITED USAGE)						D-F, H	1
-115E	65C26321-70SP		.	GATE ASSY-EXHAUST (LIMITED USAGE)						D-F, H	1
-115F	65C26321-70SP			DELETED							
-115G	65C26321-80SP		.	GATE ASSY-EXHAUST (LIMITED USAGE)						D-F, H, M, P, R	1
-115H	65C26321-80SP		.	GATE ASSY-EXHAUST						U, V, AB	1
120	65C26326-9		..	BRACKET ASSY-HINGE (USED ON ITEMS 110, 110A, 110C, 110D, 110E, 110G)						A-C, G, J, L, Q, S, T, Y	1
-120A	65C26326-1		..	BRACKET ASSY-HINGE (USED ON ITEM 110B)						A-C, G	1
-125	65C26326-10		..	BRACKET ASSY-HINGE (USED ON ITEMS 115, 115A, 115C, 115D, 115E, 115G)						D-F, H, M, P, R, U, V, AB	1
-125A	65C26326-2		..	BRACKET ASSY-HINGE (USED ON ITEM 115B)						D-F, H	1
				ATTACHING PARTS							
130	BACB30NX6K		..	BOLT (SIZE DETERMINED ON INST) (USED ON ITEMS 110, 110A, 110C, 110D, 110E, 110G, 115, 115A, 115C, 115D, 115E, 115G)							8
-130A	BACB30UB6K			DELETED							
133	BACB30UB6K		..	BOLT (SIZE DETERMINED ON INST) (USED ON ITEMS 110B, 115B)						A-H	8

-Item not Illustrated

57-53-30

ILLUSTRATED PARTS LIST

Page 1026

Nov 01/2007



COMPONENT MAINTENANCE MANUAL

FIG/ ITEM	PART NUMBER	AIRLINE PART NUMBER	NOMENCLATURE							USAGE CODE	UNITS PER ASSY
			1	2	3	4	5	6	7		
1- 135	HL1187-6		. . COLLAR (V5M902) (SPEC BACC30X6) (OPT HL87-6 (V73197)) (OPT HL87-6 (V92215)) (OPT HL1187-6 (V56878)) (OPT HL1187-6 (V92215)) (OPT HL87-6 (V56878)) (OPT HL1187-6 (V73197)) (USED ON ITEMS 110, 110A, 110C, 110D, 110E, 110G, 115, 115A, 115C, 115D, 115E, 115G)								8
-135A 138	2TCC06 2TCC06		DELETED . . COLLAR (V17446) (SPEC BACC30BF6) (OPT 2TCC06 (V92215)) (USED ON ITEMS 110B, 115B)							A-H	8
			----- * -----								
140	P27850		. . . BEARING (V57606) (OPT ITEM 140E) (USED ON ITEMS 120, 125)								1
-140A	ABW4V110		. . . BEARING (VS0352) (OPT ITEM 140B, 140C, 140D) (USED ON ITEMS 120A, 125A)							A-H	1
-140B	03-506-04E005		. . . BEARING (V09455) (OPT ITEM 140A, 140C, 140D) (USED ON ITEMS 120A,125A)							A-H	1
-140C	KWB4-28		. . . BEARING (V97613) (OPT ITEM 140A, 140B, 140D) (USED ON ITEMS 120A,125A)							A-H	1
-140D	AW4V73		. . . BEARING (V15860) (OPT ITEM 140A, 140B, 140C) (USED ON ITEMS 120A,125A)							A-H	1
-140E	AMB5V4002		. . . BEARING (V15860) (OPT ITEM 140) (USED ON ITEMS 120,125)								1

-Item not Illustrated

57-53-30

ILLUSTRATED PARTS LIST

Page 1027

Nov 01/2007



COMPONENT MAINTENANCE MANUAL

FIG/ ITEM	PART NUMBER	AIRLINE PART NUMBER	NOMENCLATURE							USAGE CODE	UNITS PER ASSY
			1	2	3	4	5	6	7		
1-											
145	NAS516-1A		. . .								1
150	65C26326-13		. . .							A-C, G, J, L, Q, S, T, Y	1
-150A	65C26326-5		. . .							A-C, G	1
-155	65C26326-14		. . .							D-F, H, M, P, R, U, V, AB	1
-155A	65C26326-6		. . .							D-F, H	1
160	65C34777-5		. .							A-C, G, J, L, Q, S, T, Y	1
-160A	69-73573-1		DELETED								
163	69-73573-1		. .							A-C, G	1
-165	65C34777-6		. .							D-F, H, M, P, R, U, V, AB	1
-165A	69-73573-2		DELETED								
-167	69-73573-2		. .							D-F, H	1
			ATTACHING PARTS								
170	BACB30NX6K		. .								6
-170A	BACB30UB6K		DELETED								
173	BACB30UB6K		. .							A-H	6

-Item not Illustrated

57-53-30

ILLUSTRATED PARTS LIST

Page 1028

Nov 01/2007



COMPONENT MAINTENANCE MANUAL

FIG/ ITEM	PART NUMBER	AIRLINE PART NUMBER	NOMENCLATURE							USAGE CODE	UNITS PER ASSY
			1	2	3	4	5	6	7		
1- 175	HL1187-6		. . COLLAR (V5M902) (SPEC BACC30X6) (OPT HL87-6 (V73197)) (OPT HL87-6 (V92215)) (OPT HL1187-6 (V56878)) (OPT HL1187-6 (V92215)) (OPT HL87-6 (V56878)) (OPT HL1187-6 (V73197)) (USED ON ITEMS 110, 110A, 110C, 110D, 110E, 110G, 115, 115A, 115C, 115D, 115E, 115G)								6
-175A	2TCC06		DELETED								
178	2TCC06		. . COLLAR (V17446) (SPEC BACC30BF6) (OPT 2TCC06 (V92215)) (USED ON ITEMS 110B, 115B)							A-H	6
			----- * -----								
180	BACB28AP05P027		. . . BUSHING (USED ON ITEMS 160, 165)								1
-180A	BACB28W4B027		. . . BUSHING (USED ON ITEMS 163, 167)							A-H	1
185	BACB28AT07B027C		. . . BUSHING (USED ON ITEMS 160, 165)								1
-185A	BACB28W6B027		. . . BUSHING (USED ON ITEMS 163, 167)							A-H	1
190	65C34777-7		. . . BRACKET (USED ON ITEM 160)							A-C, G, J, L, Q, S, T, Y	1
-190A	65-73573-3		DELETED								
193	65-73573-3		. . . BRACKET (USED ON ITEM 163)							A-C, G	1
-195	65C34777-8		. . . BRACKET (USED ON ITEM 165)							D-F, H, M, P, R, U, V, AB	1
-195A	65-73573-4		DELETED								
-197	65-73573-4		. . . BRACKET (USED ON ITEM 167)							D-F, H	1

-Item not Illustrated

57-53-30

ILLUSTRATED PARTS LIST

Page 1029

Nov 01/2007



COMPONENT MAINTENANCE MANUAL

FIG/ ITEM	PART NUMBER	AIRLINE PART NUMBER	NOMENCLATURE							USAGE CODE	UNITS PER ASSY
			1	2	3	4	5	6	7		
1-											
200	65C26326-11		. .	BRACKET ASSY-HINGE (USED ON ITEMS 110, 110A, 110C, 110D, 110E, 110G)					A-C, G, J, L, Q, S, T, Y	1	
-200A	65C26326-3		. .	BRACKET ASSY-HINGE (USED ON ITEM 110B)					A-C, G	1	
-205	65C26326-12		. .	BRACKET ASSY-HINGE (USED ON ITEMS 115, 115A, 115C, 115D, 115E, 115G)					D-F, H, M, P, R, U, V, AB	1	
-205A	65C26326-4		. .	BRACKET ASSY-HINGE (USED ON ITEM 115B)					D-F, H	1	
				ATTACHING PARTS							
210	BACB30NX6K		. .	BOLT (SIZE DETERMINED ON INST) (USED ON ITEMS 110, 110A, 110C, 110D, 110E, 110G, 115, 115A, 115C, 115D, 115E, 115G)						3	
-210A	BACB30UB6K			DELETED							
213	BACB30UB6K		. .	BOLT (SIZE DETERMINED ON INST) (USED ON ITEMS 110B, 115B)					A-H	3	
215	BACB30NX6K		. .	BOLT (SIZE DETERMINED ON INST) (OPT ITEM 215A) (USED ON ITEMS 110, 110A, 110C, 110D, 110E, 110G, 115, 115A, 115C, 115D, 115E, 115G)						2	
-215A	BACB30UB6K		. .	BOLT (SIZE DETERMINED ON INST) (OPT ITEM 215) (USED ON ITEMS 110, 110A, 110C, 110D, 110E, 110G, 115, 115A, 115C, 115D, 115E, 115G)						2	
220	BACB30MR3K6		. .	BOLT (ITEM 220A OPT TO ITEM 220, ITEM 240 AND ITEM 230 COMBINED) (USED ON ITEMS 110, 110A, 110C, 110D, 110E, 110G, 115, 115A, 115C, 115D, 115E, 115G)						1	

-Item not Illustrated

57-53-30

ILLUSTRATED PARTS LIST

Page 1030

Nov 01/2007



COMPONENT MAINTENANCE MANUAL

FIG/ ITEM	PART NUMBER	AIRLINE PART NUMBER	NOMENCLATURE							USAGE CODE	UNITS PER ASSY
			1	2	3	4	5	6	7		
1- -220A	BACB30NX6K		. .								1
225	BACB30MR3K6		. .							A-H	3
230	BACW10BP3DP		. .								1
235	BACW10BP3DP		. .							A-H	3
240	NAS1805-3N		. .								1
-240A	HL1187-6		. .								1

-Item not Illustrated

57-53-30

ILLUSTRATED PARTS LIST

Page 1031

Nov 01/2007



COMPONENT MAINTENANCE MANUAL

FIG/ ITEM	PART NUMBER	AIRLINE PART NUMBER	NOMENCLATURE							USAGE CODE	UNITS PER ASSY
			1	2	3	4	5	6	7		
1- 245	HL1187-6		. . COLLAR (V5M902) (SPEC BACC30X6) (OPT HL87-6 (V73197)) (OPT HL87-6 (V92215)) (OPT HL1187-6 (V56878)) (OPT HL1187-6 (V92215)) (OPT HL87-6 (V56878)) (OPT HL1187-6 (V73197)) (USED ON ITEMS 110, 110A, 110C, 110D, 110E, 110G, 115, 115A, 115C, 115D, 115E, 115G)								3
-245A	2TCC06		DELETED								
248	2TCC06		. . COLLAR (V17446) (SPEC BACC30BF6) (OPT 2TCC06 (V92215)) (USED ON ITEMS 110B, 115B)							A-H	3
250	HL1187-6		. . COLLAR (V5M902) (SPEC BACC30X6) (OPT HL87-6 (V73197)) (OPT HL87-6 (V92215)) (OPT HL1187-6 (V56878)) (OPT HL1187-6 (V92215)) (OPT HL87-6 (V56878)) (OPT HL1187-6 (V73197)) (USED ON ITEMS 110, 110A, 110C, 110D, 110E, 110G, 115, 115A, 115C, 115D, 115E, 115G) (USED WITH ITEM 215)								2
-250A	HL1187-6		. . COLLAR (V5M902) (SPEC BACC30X6) (OPT HL87-6 (V73197)) (OPT HL87-6 (V92215)) (OPT HL1187-6 (V56878)) (OPT HL1187-6 (V92215)) (OPT HL87-6 (V56878)) (OPT HL1187-6 (V73197)) (USED ON ITEMS 110, 110A, 110C, 110D, 110E, 110G, 115, 115A, 115C, 115D, 115E, 115G) (USED WITH ITEM 215A)								2

-Item not Illustrated

57-53-30

ILLUSTRATED PARTS LIST

Page 1032

Nov 01/2007



COMPONENT MAINTENANCE MANUAL

FIG/ ITEM	PART NUMBER	AIRLINE PART NUMBER	NOMENCLATURE							USAGE CODE	UNITS PER ASSY
			1	2	3	4	5	6	7		
1-											
255	NAS1805-3N									A-H	3
260	P27850										1
-260A	ABW4V110									A-H	1
-260B	03-506-04E005									A-H	1
-260C	KWB4-28									A-H	1
-260D	AW4V73									A-H	1
-260E	AMB5V4002										1
265	NAS516-1A										1
270	65C26326-15									A-C, G, J, L, Q, S, T, Y	1
-270A	65C26326-7									A-C, G	1
-275	65C26326-16									D-F, H, M, P, R, U, V, AB	1
-275A	65C26326-8									D-F, H	1
280	BACB30NN3K5										21
285	BACB30NN3K3										2

-Item not Illustrated

57-53-30

ILLUSTRATED PARTS LIST

Page 1033

Nov 01/2007



COMPONENT MAINTENANCE MANUAL

FIG/ ITEM	PART NUMBER	AIRLINE PART NUMBER	NOMENCLATURE							USAGE CODE	UNITS PER ASSY
			1	2	3	4	5	6	7		
1-											
290	65C26321-31		.	.	SEAL-INBD UPR BLADE (MAKE FROM EXTR RUBBER 10-60754-75 17.10 IN.)						1
295	65C26321-32		.	.	SEAL-INBD LWR BLADE (MAKE FROM EXTR RUBBER 10-60754-75 17.10 IN.)						1
300	65C26321-533		.	.	PLUG-BULB SEAL						2
305	65C26321-534		.	.	PLUG-BULB SEAL						2
310	65C26321-515		.	.	SEAL-OUTBD UPR BULB (65C26321-515 I/W 65C26321-9 IF 65C26321-9 DOES NOT HAVE ALUM INSERT) (MAKE FROM EXTR RUBBER 10-60754-525 11.30 IN.) (ITEM 310A OPT TO ITEM 310 ONLY IF ITEM 310A DOES NOT HAVE AN ALUMINUM INSERT) (USED ON ITEMS 110, 110A, 110B, 110C)				A-C, G		1
-310A	65C26321-9		.	.	SEAL-OUTBD UPR BULB (65C26321-515 I/W 65C26321-9 IF 65C26321-9 DOES NOT HAVE ALUM INSERT) (MAKE FROM EXTR RUBBER 10-60754-2 11.30 IN.) (ITEM 310A OPT TO ITEM 310 ONLY IF ITEM 310A DOES NOT HAVE AN ALUMINUM INSERT) (USED ON ITEMS 110, 110A, 110B, 110C)				A-C, G		1
-310B	65C26321-67		.	.	SEAL-OUTBD UPR BULB (MAKE FROM EXTR RUBBER 10-60754-525 11.30 IN.) (USED ON ITEMS 110D, 110E, 110G)				A-C, G, J, L, Q, S, T, Y		1

-Item not Illustrated

57-53-30

ILLUSTRATED PARTS LIST

Page 1034

Nov 01/2007



COMPONENT MAINTENANCE MANUAL

FIG/ ITEM	PART NUMBER	AIRLINE PART NUMBER	NOMENCLATURE							USAGE CODE	UNITS PER ASSY	
			1	2	3	4	5	6	7			
1- -315	65C26321-516		.	.	SEAL-OUTBD UPR BULB (65C26321-516 I/W 65C26321-10 IF 65C26321-10 DOES NOT HAVE ALUM INSERT) (MAKE FROM EXTR RUBBER 10-60754-525 11.30 IN.) (ITEM 315A OPT TO ITEM 315 ONLY IF ITEM 315A DOES NOT HAVE AN ALUMINUM INSERT) (USED ON ITEMS 115, 115A, 115B, 115C)						D-F, H	1
-315A	65C26321-10		.	.	SEAL-OUTBD UPR BULB (65C26321-516 I/W 65C26321-10 IF 65C26321-10 DOES NOT HAVE ALUM INSERT) (MAKE FROM EXTR RUBBER 10-60754-2 11.30 IN.) (ITEM 315A OPT TO ITEM 315 ONLY IF ITEM 315A DOES NOT HAVE AN ALUMINUM INSERT) (USED ON ITEMS 115,115A,115B,115C)						D-F, H	1
-315B	65C26321-68		.	.	SEAL-OUTBD UPR BULB (MAKE FROM EXTR RUBBER 10-60754-525 11.30 IN.) (USED ON ITEMS 115D, 115E, 115G)						D-F, H, M, P, R, U, V, AB	1
320	65C26321-517		.	.	SEAL-OUTBD LWR BULB (65C26321-517 I/W 65C26321-15 IF 65C26321-15 DOES NOT HAVE ALUM INSERT) (MAKE FROM EXTR RUBBER 10-60754-525 11.30 IN.) (ITEM 320A OPT TO ITEM 320 ONLY IF ITEM 320A DOES NOT HAVE AN ALUMINUM INSERT) (USED ON ITEMS 110, 110A, 110B, 110C)						A-C, G	1

-Item not Illustrated

57-53-30

ILLUSTRATED PARTS LIST

Page 1035

Nov 01/2007



COMPONENT MAINTENANCE MANUAL

FIG/ ITEM	PART NUMBER	AIRLINE PART NUMBER	NOMENCLATURE							USAGE CODE	UNITS PER ASSY	
			1	2	3	4	5	6	7			
1- -320A	65C26321-15		. .							SEAL-OUTBD LWR BULB (65C26321-517 I/W 65C26321-15 IF 65C26321-15 DOES NOT HAVE ALUM INSERT) (MAKE FROM EXTR RUBBER 10-60754-2 14.4 IN.) (ITEM 320A OPT TO ITEM 320 ONLY IF ITEM 320A DOES NOT HAVE AN ALUMINUM INSERT) (USED ON ITEMS 110, 110A, 110B, 110C)	A-C, G	1
-320B	65C26321-65		. .							SEAL-OUTBD LWR BULB (MAKE FROM EXTR RUBBER 10-60754-525 11.30 IN.) (USED ON ITEMS 110D, 110E, 110G)	A-C, G, J, L, Q, S, T, Y	1
-325	65C26321-518		. .							SEAL-OUTBD LWR BULB (65C26321-518 I/W -16 IF -16 DOES NOT HAVE ALUM INSERT) (MAKE FROM EXTR RUBBER 10-60754-525 11.30 IN.) (ITEM 325A OPT TO ITEM 325 ONLY IF ITEM 325A DOES NOT HAVE AN ALUMINUM INSERT) (USED ON ITEMS 115, 115A, 115B, 115C)	D-F, H	1
-325A	65C26321-16		. .							SEAL-OUTBD LWR BULB (65C26321-518 I/W 65C26321-16 IF 65C26321-16 DOES NOT HAVE ALUM INSERT) (MAKE FROM EXTR RUBBER 10-60754-2 14.4 IN.) (ITEM 325A OPT TO ITEM 325 ONLY IF ITEM 325A DOES NOT HAVE AN ALUMINUM INSERT) (USED ON ITEMS 115, 115A, 115B, 115C)	D-F, H	1
-325B	65C26321-66		. .							SEAL-OUTBD LWR BULB (MAKE FROM EXTR RUBBER 10-60754-525 11.30 IN.) (USED ON ITEMS 115D, 115E, 115G)	D-F, H, M, P, R, U, V, AB	1
330	65C26321-529		. .							RETAINER-SEAL (USED ON ITEMS 110, 110B)	A-C, G	1
-330A	65C26321-55		. .							RETAINER-SEAL (USED ON ITEMS 110A, 110C)	A-C, G	1

-Item not Illustrated

57-53-30

ILLUSTRATED PARTS LIST

Page 1036

Nov 01/2007



COMPONENT MAINTENANCE MANUAL

FIG/ ITEM	PART NUMBER	AIRLINE PART NUMBER	NOMENCLATURE							USAGE CODE	UNITS PER ASSY
			1	2	3	4	5	6	7		
1-											
-330B	65C26321-61		.	.	RETAINER-SEAL (USED ON ITEMS 110D, 110E, 110G)					A-C, G, J, L, Q, S, T, Y	1
-335	65C26321-530		.	.	RETAINER-SEAL (USED ON ITEMS 115, 115B)					D-F, H	1
-335A	65C26321-56		.	.	RETAINER-SEAL (USED ON ITEMS 115A, 115C)					D-F, H	1
-335B	65C26321-62		.	.	RETAINER-SEAL (USED ON ITEMS 115D, 115E, 115G)					D-F, H, M, P, R, U, V, AB	1
340	65C26321-531		.	.	RETAINER-SEAL (USED ON ITEMS 110, 110A, 110B, 110C)					A-C, G	1
-340A	65C26321-63		.	.	RETAINER-SEAL (USED ON ITEMS 110D, 110E, 110G)					A-C, G, J, L, Q, S, T, Y	1
-345	65C26321-532		.	.	RETAINER-SEAL (USED ON ITEMS 115, 115A, 115B, 115C)					D-F, H	1
-345A	65C26321-64		.	.	RETAINER-SEAL (USED ON ITEMS 115D, 115E, 115G)					D-F, H, M, P, R, U, V, AB	1
350	BACR15CE4AD5		.	.	RIVET						7
355	69-74619-2		.	.	DEFLECTOR-SEAL						1
360	BACR15CE6AD8		.	.	RIVET						23
365	65C26321-7		.	.	EDGE-TRAILING						1
370	65-46481-97		.	.	CARRIAGE ASSY (LIMITED USAGE) (65-46481-97 I/W 65-46481-87, -91, - 101, -111, -115, -121) (REPLACED BY AND NOT INTCHG/W 65-46481-145) (REF CMM 57-53-36)				A-C		1
-370A	65-46481-105		.	.	CARRIAGE ASSY (LIMITED USAGE) (65-46481-105 I/W -89, -93, -103, -107, - 109, -113, -119) (REPLACED BY AND NOT INTCHG/W 65-46481-143) (REF CMM 57-53-36)				A-C		1

-Item not Illustrated

57-53-30

ILLUSTRATED PARTS LIST

Page 1037

Nov 01/2007



COMPONENT MAINTENANCE MANUAL

FIG/ ITEM	PART NUMBER	AIRLINE PART NUMBER	NOMENCLATURE							USAGE CODE	UNITS PER ASSY
			1	2	3	4	5	6	7		
1- -370B	65-46481-113		.	CARRIAGE ASSY (LIMITED USAGE) (65-46481-113 I/W -89, -93, -103, -105, - 107, -109, -119) (REPLACED BY AND NOT INTCHG/W 65-46481-143) (REF CMM 57-53-36)						A-C, J	1
-370C	65-46481-115		.	CARRIAGE ASSY (LIMITED USAGE) (65-46481-115 I/W 65-46481-87, -91, - 97, -101, -111, -121) (REPLACED BY AND NOT INTCHG/W 65-46481-145) (REF CMM 57-53-36)						A-C, J	1
-370D	65-46481-119		.	CARRIAGE ASSY (LIMITED USAGE) (65-46481-119 I/W -89, -93, -103, -105, - 107, -109, -113) (REPLACED BY AND NOT INTCHG/W 65-46481-143) (PRE SB 737-57-1227R1) (REF CMM 57-53-36)						A-C, J	1
-370E	65-46481-121		.	CARRIAGE ASSY (LIMITED USAGE) (65-46481-121 I/W 65-46481-87, -91, - 97, -101, -111, -115) (REPLACED BY AND NOT INTCHG/W 65-46481-145) (PRE SB 737-57-1227R1) (REF CMM 57-53-36)						A-C, J	1
-370F	65-46481-143		.	CARRIAGE ASSY (LIMITED USAGE) (REPLACES 65-46481-105, -113, -119) (REF CMM 57-53-36)						A-C, J	1
-370G	65-46481-145		.	CARRIAGE ASSY (LIMITED USAGE) (REPLACES 65-46481-97, -115, -121) (REF CMM 57-53-36)						A-C, J	1
-370H	65-46481-117		.	CARRIAGE ASSY (65-46481-117 I/W 65-46481-133) (REPLACED BY AND NOT INTCHG/W 65-46481-147) (POST SB 737-57-1227R1) (REF CMM 57-53-36)						G, L	1

-Item not Illustrated

57-53-30

ILLUSTRATED PARTS LIST

Page 1038

Nov 01/2007



COMPONENT MAINTENANCE MANUAL

FIG/ ITEM	PART NUMBER	AIRLINE PART NUMBER	NOMENCLATURE							USAGE CODE	UNITS PER ASSY
			1	2	3	4	5	6	7		
1-											
-370I	65-46481-123		.	CARRIAGE ASSY (65-46481-123 I/W 65-46481-135) (REPLACED BY AND NOT INTCHG/W 65-46481-149) (POST SB 737-57-1227R1) (REF CMM 57-53-36)					G, L	1	
-370J	65-46481-147		.	CARRIAGE ASSY (REPLACES 65-46481-117) (REF CMM 57-53-36)					G, L	1	
-370K	65-46481-149		.	CARRIAGE ASSY (REPLACES 65-46481-123) (REF CMM 57-53-36)					G, L	1	
-370L	65-46481-133		.	CARRIAGE ASSY (65-46481-133 I/W 65-46481-117) (REPLACED BY AND NOT INTCHG/W 65-46481-147) (REF CMM 57-53-36)					Q, T, Y	1	
-370M	65-46481-135		.	CARRIAGE ASSY (65-46481-135 I/W 65-46481-123) (REPLACED BY AND NOT INTCHG/W 65-46481-149) (REF CMM 57-53-36)					Q, T, Y	1	
-370N	65-46481-147		.	CARRIAGE ASSY (REPLACES 65-46481-133) (REF CMM 57-53-36)					Q, T, Y	1	
-370P	65-46481-149		.	CARRIAGE ASSY (REPLACES 65-46481-135) (REF CMM 57-53-36)					Q, T, Y	1	
-370Q	65-46481-119		.	CARRIAGE ASSY (LIMITED USAGE) (65-46481-119 I/W -89, -93, -103, -105, - 107, -109, -113) (REPLACED BY AND NOT INTCHG/W 65-46481-143) (PRE SB 737-57-1227R1) (REF CMM 57-53-36)					S	1	

-Item not Illustrated

57-53-30

ILLUSTRATED PARTS LIST

Page 1039

Nov 01/2007



COMPONENT MAINTENANCE MANUAL

FIG/ ITEM	PART NUMBER	AIRLINE PART NUMBER	NOMENCLATURE							USAGE CODE	UNITS PER ASSY
			1	2	3	4	5	6	7		
1- -370R	65-46481-121		.	CARRIAGE ASSY (LIMITED USAGE) (65-46481-121 I/W 65-46481-87, -91, - 97, -101, -111, -115) (REPLACED BY AND NOT INTCHG/W 65-46481-145) (PRE SB 737-57-1227R1) (REF CMM 57-53-36)						S	1
-370S	65-46481-143		.	CARRIAGE ASSY (REPLACES 65-46481-119) (REF CMM 57-53-36)						S	1
-370T	65-46481-145		.	CARRIAGE ASSY (REPLACES 65-46481-121) (REF CMM 57-53-36)						S	1
-375	65-46481-98		.	CARRIAGE ASSY (LIMITED USAGE) (65-46481-98 I/W 65-46481-88, -92, - 102, -112, -116, -122) (REPLACED BY AND NOT INTCHG/W 65-46481-146) (REF CMM 57-53-36)						D-F	1
-375A	65-46481-106		.	CARRIAGE ASSY (LIMITED USAGE) (65-46481-106 I/W -90, -94, -104, -108, - 110, -114, -120) (REPLACED BY AND NOT INTCHG/W 65-46481-144) (REF CMM 57-53-36)						D-F	1
-375B	65-46481-114		.	CARRIAGE ASSY (LIMITED USAGE) (65-46481-114 I/W -90, -94, -104, -106, - 108, -110, -120) (REPLACED BY AND NOT INTCHG/W 65-46481-144) (REF CMM 57-53-36)						D-F, M	1
-375C	65-46481-116		.	CARRIAGE ASSY (LIMITED USAGE) (65-46481-116 I/W 65-46481-88, -92, - 98, -102, -112, -122) (REPLACED BY AND NOT INTCHG/W 65-46481-146) (REF CMM 57-53-36)						D-F, M	1

-Item not Illustrated

57-53-30

ILLUSTRATED PARTS LIST

Page 1040

Nov 01/2007



COMPONENT MAINTENANCE MANUAL

FIG/ ITEM	PART NUMBER	AIRLINE PART NUMBER	NOMENCLATURE							USAGE CODE	UNITS PER ASSY
			1	2	3	4	5	6	7		
1- -375D	65-46481-120		.	CARRIAGE ASSY (LIMITED USAGE) (65-46481-120 I/W -90, -94, -104, -106, -108, -110, -114) (REPLACED BY AND NOT INTCHG/W 65-46481-144) (PRE SB 737-57-1227R1) (REF CMM 57-53-36)						D-F, M	1
-375E	65-46481-122		.	CARRIAGE ASSY (LIMITED USAGE) (65-46481-122 I/W 65-46481-88, -92, -98, -102, -112, -116) (REPLACED BY AND NOT INTCHG/W 65-46481-146) (PRE SB 737-57-1227R1) (REF CMM 57-53-36)						D-F, M	1
-375F	65-46481-144		.	CARRIAGE ASSY (LIMITED USAGE) (REPLACES 65-46481-106, -114, -120) (REF CMM 57-53-36)						D-F, M	1
-375G	65-46481-146		.	CARRIAGE ASSY (LIMITED USAGE) (REPLACES 65-46481-98, -116, -122) (REF CMM 57-53-36)						D-F, M	1
-375H	65-46481-118		.	CARRIAGE ASSY (65-46481-118 I/W 65-46481-134) (REPLACED BY AND NOT INTCHG/W 65-46481-148) (POST SB 737-57-1227R1) (REF CMM 57-53-36)						H, P	1
-375I	65-46481-124		.	CARRIAGE ASSY (65-46481-124 I/W 65-46481-136) (REPLACED BY AND NOT INTCHG/W 65-46481-150) (POST SB 737-57-1227R1) (REF CMM 57-53-36)						H, P	1
-375J	65-46481-148		.	CARRIAGE ASSY (REPLACES 65-46481-118) (REF CMM 57-53-36)						H, P	1
-375K	65-46481-150		.	CARRIAGE ASSY (REPLACES 65-46481-124) (REF CMM 57-53-36)						H, P	1

-Item not Illustrated

57-53-30

ILLUSTRATED PARTS LIST

Page 1041

Nov 01/2007



COMPONENT MAINTENANCE MANUAL

FIG/ ITEM	PART NUMBER	AIRLINE PART NUMBER	NOMENCLATURE							USAGE CODE	UNITS PER ASSY
			1	2	3	4	5	6	7		
1- -375L	65-46481-134		.	CARRIAGE ASSY (65-46481-134 I/W 65-46481-118) (REPLACED BY AND NOT INTCHG/W 65-46481-148) (REF CMM 57-53-36)						R, V, AB	1
-375M	65-46481-136		.	CARRIAGE ASSY (65-46481-136 I/W 65-46481-124) (REPLACED BY AND NOT INTCHG/W 65-46481-150) (REF CMM 57-53-36)						R, V, AB	1
-375N	65-46481-148		.	CARRIAGE ASSY (REPLACES 65-46481-134) (REF CMM 57-53-36)						R, V, AB	1
-375P	65-46481-150		.	CARRIAGE ASSY (REPLACES 65-46481-136) (REF CMM 57-53-36)						R, V, AB	1
-375Q	65-46481-120		.	CARRIAGE ASSY (LIMITED USAGE) (65-46481-120 I/W -90, -94, -104, -106, - 109, -110, -114) (REPLACED BY AND NOT INTCHG/W 65-46481-144) (PRE SB 737-57-1227R1) (REF CMM 57-53-36)						U	1
-375R	65-46481-122		.	CARRIAGE ASSY (LIMITED USAGE) (65-46481-122 I/W 65-46481-88, -92, - 98, -102, -112, -116) (REPLACED BY AND NOT INTCHG/W 65-46481-146) (PRE SB 737-57-1227R1) (REF CMM 57-53-36)						U	1
-375S	65-46481-144		.	CARRIAGE ASSY (REPLACES 65-46481-120) (REF CMM 57-53-36)						U	1
-375T	65-46481-146		.	CARRIAGE ASSY (REPLACES 65-46481-122) (REF CMM 57-53-36)						U	1

-Item not Illustrated

57-53-30

ILLUSTRATED PARTS LIST

Page 1042

Nov 01/2007



COMPONENT MAINTENANCE MANUAL

FIG/ ITEM	PART NUMBER	AIRLINE PART NUMBER	NOMENCLATURE							USAGE CODE	UNITS PER ASSY	
			1	2	3	4	5	6	7			
1- 380	65C26320-15SP		.								A	1
-380A	65C26320-17SP		.								A	1
-380B	65C26320-7SP		.								A	1
-380C	65C26320-23SP		.								B	1
-380D	65C26320-21SP		.								C	1

-Item not Illustrated

57-53-30

ILLUSTRATED PARTS LIST

Page 1043

Nov 01/2007



COMPONENT MAINTENANCE MANUAL

FIG/ ITEM	PART NUMBER	AIRLINE PART NUMBER	NOMENCLATURE							USAGE CODE	UNITS PER ASSY	
			1	2	3	4	5	6	7			
1- -380E	65C26320-25SP		.								G	1
-380F	65C26320-29SP		.								J	1
-380G	65C26320-31SP											
-380H	65C26320-33SP		.								L, Q	1
-380J	65C26320-35SP		.								S	1
-380K	65C26320-37SP		.								T, Y	1
-385	65C26320-16SP		.								D	1
-385A	65C26320-18SP		.								D	1

-Item not Illustrated

57-53-30

ILLUSTRATED PARTS LIST

Page 1044

Nov 01/2007



COMPONENT MAINTENANCE MANUAL

FIG/ ITEM	PART NUMBER	AIRLINE PART NUMBER	NOMENCLATURE							USAGE CODE	UNITS PER ASSY
			1	2	3	4	5	6	7		
1-											
-385B	65C26320-8SP		.	MIDFLAP ASSY (LIMITED USAGE) (65C26320-18SP MAY REPLACE 65C26320-2SP OR 65C26320-4SP OR 65C26320-12SP OR 65C26320-8SP OR 65C26320-16SP UPON INCORPORATION OF S/B 737-57- 1201) (REF CMM 57-53-18)					D	1	
-385C	65C26320-24SP		.	MIDFLAP ASSY (65C26320-24SP MAY REPLACE 65C26320-22SP UPON INCORPORATION OF S/B 737-57- 1201) (REF CMM 57-53-18)					E	1	
-385D	65C26320-22SP		.	MIDFLAP ASSY (65C26320-24SP MAY REPLACE 65C26320-22SP UPON INCORPORATION OF S/B 737-57- 1201) (REF CMM 57-53-18)					F	1	
-385E	65C26320-26SP		.	MIDFLAP ASSY (65C26320-18SP I/W 65C26320-26SP ACCORDING TO CUSTOMER PREFERENCE) (POST SB 737-57-1227R1) (REF CMM 57-53-18)					H	1	
-385F	65C26320-30SP		.	MIDFLAP ASSY (REF CMM 57-53-18)					M	1	
-385G	65C26320-32SP			DELETED							
-385H	65C26320-34SP		.	MIDFLAP ASSY (REF CMM 57-53-18)					P, R	1	
-385J	65C26320-36SP		.	MIDFLAP ASSY (REF CMM 57-53-18)					U	1	
-385K	65C26320-38SP		.	MIDFLAP ASSY (REF CMM 57-53-18)					V, AB	1	
390	65-46435-277			DELETED							
-390A	65-46435-281			DELETED							
-390B	65-46435-303			DELETED							
-390C	65-46435-317			DELETED							

-Item not Illustrated

57-53-30

ILLUSTRATED PARTS LIST

Page 1045

Nov 01/2007



COMPONENT MAINTENANCE MANUAL

FIG/ ITEM	PART NUMBER	AIRLINE PART NUMBER	NOMENCLATURE							USAGE CODE	UNITS PER ASSY	
			1	2	3	4	5	6	7			
1- 390D	65-46435-277SP		.								A-C	1
-390E	65-46435-281SP		.								A-C	1
-390F	65-46435-303SP		.								A-C	1
-390G	65-46435-317SP		.								A-C	1
-390H	65-46435-329SP		.								A-C	1
-390J	65-46435-331SP		.								G, L	1
-390K	65-46435-333SP		.								A-C	1

-Item not Illustrated

57-53-30

ILLUSTRATED PARTS LIST

Page 1046

Nov 01/2007



COMPONENT MAINTENANCE MANUAL

FIG/ ITEM	PART NUMBER	AIRLINE PART NUMBER	NOMENCLATURE							USAGE CODE	UNITS PER ASSY
			1	2	3	4	5	6	7		
1- -390L	65-46435-335SP		.	FLAP ASSY-AFT (LIMITED USAGE) (65-46435-331SP MAY REPLACE OR BE REPLACED BY 65-46435-335SP SUBJECT TO CUSTOMER MAINTENANCE REQUIREMENTS CHANGE 65-46435-335SP HAS GREASED BEARINGS, 65-46435- 331SP HAS SELF LUBRICATING BEARINGS) (65-46435-335SP I/W 65- 46435-365SP SUBJECT TO CUSTOMER MAINTENANCE REQUIREMENTS CHANGE 65-46435- 335SP HAS GREASED BEARINGS 65- 46435-365SP HAS SELF LUBRICATED BEARINGS) (OPT ITEM 390K) (REF CMM 57-53-20)						A-C	1
-390M	65-46435-335SP		.	FLAP ASSY-AFT (65-46435-331SP MAY REPLACE OR BE REPLACED BY 65-46435-335SP SUBJECT TO CUSTOMER MAINTENANCE REQUIREMENTS CHANGE 65-46435-335SP HAS GREASED BEARINGS, 65-46435- 331SP HAS SELF LUBRICATING BEARINGS) (65-46435-335SP I/W 65- 46435-365SP SUBJECT TO CUSTOMER MAINTENANCE REQUIREMENTS CHANGE 65-46435- 335SP HAS GREASED BEARINGS 65- 46435-365SP HAS SELF LUBRICATED BEARINGS) (REF CMM 57-53-20)						J	1
-390N	65-46435-337SP		.	FLAP ASSY-AFT (REF CMM 57-53-20)						Q	1
-390P	65-46435-339SP		.	FLAP ASSY-AFT (REF CMM 57-53-20)						S	1
-390Q	65-46435-341SP		.	FLAP ASSY-AFT (REF CMM 57-53-20)						T	1
-390R	65-46435-357SP			DELETED							
-390S	65-46435-363SP			DELETED							

-Item not Illustrated

57-53-30

ILLUSTRATED PARTS LIST

Page 1047

Nov 01/2007



COMPONENT MAINTENANCE MANUAL

FIG/ ITEM	PART NUMBER	AIRLINE PART NUMBER	NOMENCLATURE							USAGE CODE	UNITS PER ASSY
			1	2	3	4	5	6	7		
1-											
-390T	65-46435-365SP		.	FLAP ASSY-AFT (65-46435-335SP I/W 65-46435-365SP SUBJECT TO CUSTOMER MAINTENANCE REQUIREMENTS CHANGE 65-46435-335SP HAS GREASED BEARINGS 65-46435- 365SP HAS SELF LUBRICATED BEARINGS) (REF CMM 57-53-20)					Y	1	
-395	65-46435-278			DELETED							
-395A	65-46435-282			DELETED							
-395B	65-46435-304			DELETED							
-395C	65-46435-318			DELETED							
-395D	65-46435-278SP		.	FLAP ASSY-AFT (LIMITED USAGE) (REF CMM 57-53-20)					D-F	1	
-395E	65-46435-282SP		.	FLAP ASSY-AFT (LIMITED USAGE) (REF CMM 57-53-20)					D-F	1	
-395F	65-46435-304SP		.	FLAP ASSY-AFT (LIMITED USAGE) (OPT ITEM 395H) (REF CMM 57-53-20)					D-F	1	
-395G	65-46435-318SP		.	FLAP ASSY-AFT (LIMITED USAGE) (PRE SB 737-57-1227R1) (REF CMM 57-53-20)					D-F	1	
-395H	65-46435-330SP		.	FLAP ASSY-AFT (LIMITED USAGE) (OPT ITEM 395F) (REF CMM 57-53-20)					D-F	1	
-395J	65-46435-332SP		.	FLAP ASSY-AFT (65-46435-332SP MAY REPLACE OR BE REPLACED BY 65-46435-336SP SUBJECT TO CUSTOMER MAINTENANCE REQUIREMENTS CHANGE, 65-46435-336SP HAS GREASED BEARINGS, 65-46435- 332SP HAS SELF LUBRICATING BEARINGS) (POST SB 737-57-1227R1) (REF CMM 57-53-20)					H, P	1	

-Item not Illustrated

57-53-30

ILLUSTRATED PARTS LIST

Page 1048

Nov 01/2007



COMPONENT MAINTENANCE MANUAL

FIG/ ITEM	PART NUMBER	AIRLINE PART NUMBER	NOMENCLATURE							USAGE CODE	UNITS PER ASSY	
			1	2	3	4	5	6	7			
1- -395K	65-46435-334SP		.								D-F	1
-395L	65-46435-336SP		.								D-F	1
-395M	65-46435-336SP		.								M	1
-395N	65-46435-338SP		.								R	1
-395P	65-46435-340SP		.								U	1
-395Q	65-46435-342SP		.								V	1

-Item not Illustrated

57-53-30

ILLUSTRATED PARTS LIST

Page 1049

Nov 01/2007



COMPONENT MAINTENANCE MANUAL

FIG/ ITEM	PART NUMBER	AIRLINE PART NUMBER	NOMENCLATURE							USAGE CODE	UNITS PER ASSY
			1	2	3	4	5	6	7		
1-											
-395R	65-46435-358SP										
-395S	65-46435-364SP										
-395T	65-46435-366SP									AB	1

-Item not Illustrated

57-53-30

ILLUSTRATED PARTS LIST

Page 1050

Nov 01/2007