



**COMPONENT MAINTENANCE  
MANUAL  
WITH  
ILLUSTRATED PARTS LIST**

**FLIGHT SPOILER ASSEMBLY NO. 4 AND 9**

**PART NUMBER  
113A4400-1, -2, -3, -4**

**BOEING PROPRIETARY, CONFIDENTIAL, AND/OR TRADE SECRET**

Copyright © 1995 The Boeing Company  
Unpublished Work - All Rights Reserved

Boeing claims copyright in each page of this document only to the extent that the page contains copyrightable subject matter. Boeing also claims copyright in this document as a compilation and/or collective work.

This document includes proprietary information owned by The Boeing Company and/or one or more third parties. Treatment of the document and the information it contains is governed by contract with Boeing. For more information, contact The Boeing Company, P.O. Box 3707, Seattle, Washington 98124.

Boeing, the Boeing signature, the Boeing symbol, 707, 717, 727, 737, 747, 757, 767, 777, 787, Dreamliner, BBJ, DC-8, DC-9, DC-10, KC-10, KDC-10, MD-10, MD-11, MD-80, MD-88, MD-90, P-8A, Poseidon and the Boeing livery are all trademarks owned by The Boeing Company; and no trademark license is granted in connection with this document unless provided in writing by Boeing.

PUBLISHED BY BOEING COMMERCIAL AIRPLANES GROUP, SEATTLE, WASHINGTON, USA  
A DIVISION OF THE BOEING COMPANY  
PAGE DATE: Jul 01/2009

**57-56-55**

Page 1  
Jul 01/2009



## COMPONENT MAINTENANCE MANUAL

Revision No. 7  
Jul 01/2009

To: All holders of FLIGHT SPOILER ASSEMBLY NO. 4 AND 9 57-56-55.

Attached is the current revision to this COMPONENT MAINTENANCE MANUAL

The COMPONENT MAINTENANCE MANUAL is furnished either as a printed manual, on microfilm, or digital products, or any combination of the three. This revision replaces all previous microfilm cartridges or digital products. All microfilm and digital products are reissued with all obsolete data deleted and all updated pages added.

For printed manuals, changes are indicated on the List of Effective Pages (LEP). The pages which are revised will be identified on the LEP by an R (Revised), A (Added), O (Overflow, i.e. changes to the document structure and/or page layout), or D (Deleted). Each page in the LEP is identified by Chapter-Section-Subject number, page number and page date.

Pages replaced or made obsolete by this revision should be removed and destroyed.

### ATTENTION

IF YOU RECEIVE PRINTED REVISIONS, PLEASE VERIFY THAT YOU HAVE RECEIVED AND FILED THE PREVIOUS REVISION. BOEING MUST BE NOTIFIED WITHIN 30 DAYS IF YOU HAVE NOT RECEIVED THE PREVIOUS REVISION. REQUESTS FOR REVISIONS OTHER THAN THE PREVIOUS REVISION WILL REQUIRE A COMPLETE MANUAL REPRINT SUBJECT TO REPRINT CHARGES SHOWN IN THE DATA AND SERVICES CATALOG.

**57-56-55**  
TRANSMITTAL LETTER  
Page 1  
Jul 01/2009

113A4400



## COMPONENT MAINTENANCE MANUAL

Location of Change

Description of Change

NO HIGHLIGHTS

**57-56-55**

HIGHLIGHTS

Page 1

Jul 01/2009



## COMPONENT MAINTENANCE MANUAL

Subject/Page	Date	Subject/Page	Date	Subject/Page	Date
TITLE PAGE		57-56-55 CLEANING (cont)		57-56-55 SPECIAL TOOLS, FIXTURES, AND EQUIPMENT (cont)	
O 1	Jul 01/2009	402	BLANK	902	BLANK
2	BLANK	57-56-55 CHECK		57-56-55 ILLUSTRATED PARTS LIST	
57-56-55 TRANSMITTAL LETTER		501	Jul 01/2008	1001	Nov 01/2008
O 1	Jul 01/2009	502	BLANK	1002	Jul 01/2008
2	BLANK	57-56-55 REPAIR - GENERAL		1003	Jul 01/2008
57-56-55 HIGHLIGHTS		601	Jul 01/2008	1004	Jul 01/2008
O 1	Jul 01/2009	602	Mar 01/2006	1005	Jul 01/2008
2	BLANK	57-56-55 REPAIR 1-1		1006	Mar 01/2006
57-56-55 EFFECTIVE PAGES		601	Jul 01/2008	1007	Mar 01/2006
1	Jul 01/2009	602	BLANK	1008	Mar 01/2006
2	BLANK	57-56-55 REPAIR 2-1		1009	Mar 01/2006
57-56-55 CONTENTS		601	Jul 01/2008	1010	Mar 01/2006
1	Mar 01/2006	602	Jul 01/2008	1011	Nov 01/2008
2	BLANK	603	Mar 01/2006	1012	Nov 01/2008
57-56-55 TR AND SB RECORD		604	Jul 01/2008		
1	Jul 01/2008	605	Jul 01/2008		
2	BLANK	606	Jul 01/2008		
57-56-55 REVISION RECORD		607	Mar 01/2006		
1	Mar 01/2006	608	BLANK		
2	Mar 01/2006	57-56-55 REPAIR 2-2			
57-56-55 RECORD OF TEMPORARY REVISIONS		601	Jul 01/2008		
1	Mar 01/2006	602	Jul 01/2008		
2	Mar 01/2006	603	Mar 01/2006		
57-56-55 INTRODUCTION		604	Mar 01/2006		
1	Mar 01/2009	605	Mar 01/2006		
2	BLANK	606	Jul 01/2008		
57-56-55 DESCRIPTION AND OPERATION		607	Jul 01/2008		
1	Mar 01/2006	608	Jul 01/2008		
2	Mar 01/2006	57-56-55 ASSEMBLY			
57-56-55 TESTING AND FAULT ISOLATION		701	Mar 01/2009		
101	Mar 01/2006	702	Nov 01/2008		
102	BLANK	57-56-55 FITS AND CLEARANCES			
57-56-55 DISASSEMBLY		801	Jul 01/2006		
301	Jul 01/2008	802	Mar 01/2006		
302	BLANK	803	Mar 01/2006		
57-56-55 CLEANING		804	BLANK		
401	Mar 01/2006	57-56-55 SPECIAL TOOLS, FIXTURES, AND EQUIPMENT			
		901	Mar 01/2006		

A = Added, R = Revised, D = Deleted, O = Overflow

# 57-56-55

EFFECTIVE PAGES

Page 1

Jul 01/2009

**COMPONENT MAINTENANCE MANUAL****TABLE OF CONTENTS**

<b><u>Paragraph Title</u></b>		<b><u>Page</u></b>
NO. 4 AND 9 FLIGHT SPOILER ASSEMBLY - DESCRIPTION AND OPERATION		1
TESTING AND FAULT ISOLATION	(Not Applicable)	
DISASSEMBLY		301
CLEANING		401
CHECK		501
REPAIR		601
ASSEMBLY		701
FITS AND CLEARANCES		801
SPECIAL TOOLS, FIXTURES, AND EQUIPMENT	(Not Applicable)	
ILLUSTRATED PARTS LIST		1001

**57-56-55**

CONTENTS

Page 1

Mar 01/2006



**COMPONENT MAINTENANCE MANUAL**

**TEMPORARY REVISION AND SERVICE BULLETIN RECORD**

BOEING SERVICE BULLETIN	BOEING TEMPORARY REVISION	OTHER DIRECTIVE	DATE OF INCORPORATION INTO MANUAL

**57-56-55**

TR AND SB RECORD

Page 1

Jul 01/2008













## COMPONENT MAINTENANCE MANUAL

### INTRODUCTION

#### 1. General

- A. The instructions in this manual supply the data necessary to do the maintenance functions together with the test, fault isolation, repair, and replacement of the defective parts.
- B. This manual is divided into different parts:
  - (1) Title Page
  - (2) Transmittal Letter
  - (3) Highlights
  - (4) List of Effective Pages
  - (5) Table of Contents
  - (6) Temporary Revision & Service Bulletin Record
  - (7) Record of Revisions
  - (8) Record of Temporary Revisions
  - (9) Introduction
  - (10) Procedures & IPL Sections
- C. Components that can be repaired have a different repair number for each specified repair. To find the repair number location of a component, look in the Repair-General procedure at the beginning of the REPAIR section. The Repair-General procedure also has an explanation of the True Position Dimension symbols used.
- D. All dimensions, measures, quantities and weights included are in English units. When metric equivalents are given they will be in the parentheses that follow the English units.
- E. The introduction to the Illustrated Parts List (IPL) shows how the IPL data is used.
- F. Design changes, optional parts, configuration differences and Service Bulletin modifications may cause different part numbers. These part numbers are identified in the IPL with an alphabetical letter which is added to the end of the basic item number. This new item number is referred to as an alpha-variant. Throughout the manual, IPL basic item number references also apply to alpha-variants unless shown differently.
- G. The tool reference numbers found in the individual procedures and in the Special Tools, Fixtures, and Equipment section are used to identify if a tool is a standard tool (STD-XXXX), a commercial tool (COM-XXXX), or a Special Tool (SPL-XXXX). This reference number is also used to distinguish between tools with similar names in the same procedure. These reference numbers are for use in the documentation only. They are not to be used for ordering tools.

# 57-56-55

INTRODUCTION

Page 1

Mar 01/2009



## COMPONENT MAINTENANCE MANUAL

### NO. 4 AND 9 FLIGHT SPOILER ASSEMBLY - DESCRIPTION AND OPERATION

#### 1. Description

A. There are four flight spoiler assemblies, one outboard ground spoiler assembly, and one inboard ground spoiler assembly on each wing. The outboard ground spoiler assemblies are installed on the left and right wings in pair as No. 1 and 12. The spoiler assemblies are in pairs as No. 2 and 11, No. 3 and 10, No. 4 and 9, No. 5 and 8. The inboard ground spoiler assemblies are in pair as No. 6 and 7.

The flight spoiler assembly has a panel bond assembly, two jumper assemblies, a center fitting, and two end ribs. The panel bond assembly is made from aluminum honeycomb core reinforced between two aluminum alloy panels. The center fitting and the two end ribs are made from aluminum alloy. The flight spoiler assemblies are attached to the hinges on the rear spar of the wings.

#### 2. Operation

A. The flight spoiler assemblies are used together with the aileron assemblies for lateral control and speed brakes. The flight spoiler assemblies on the left and right wings can be raised alternately for lateral control during flight, or can be raised together as speed brakes during landing. The flight spoiler assemblies are controlled by actuators.

#### 3. Leading Particulars (Approximate)

- A. Length – 42 inches
- B. Width – 26 inches
- C. Height – 3 inches
- D. Weight – 13 pounds

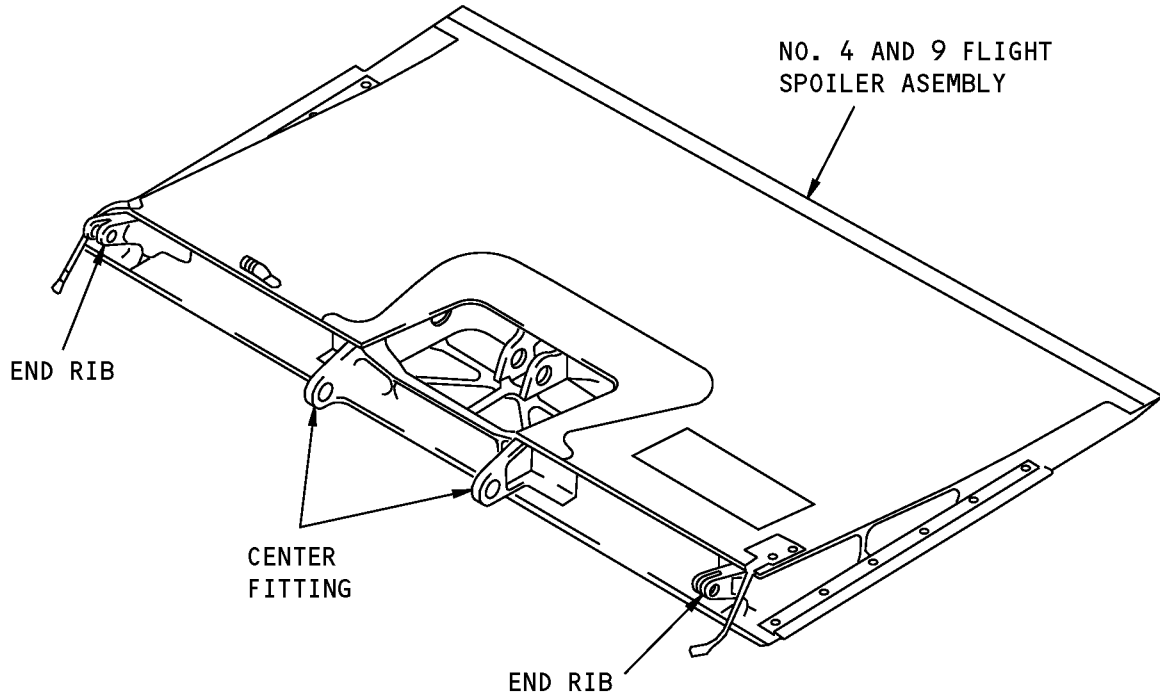
# 57-56-55

DESCRIPTION AND OPERATION

Page 1

Mar 01/2006

COMPONENT MAINTENANCE MANUAL



No. 4 and 9 Flight Spoiler Assembly  
Figure 1

**57-56-55**

DESCRIPTION AND OPERATION

Page 2

Mar 01/2006



**COMPONENT MAINTENANCE MANUAL**

**TESTING AND FAULT ISOLATION**

**(NOT APPLICABLE)**

**57-56-55**

TESTING AND FAULT ISOLATION

Page 101

Mar 01/2006



## COMPONENT MAINTENANCE MANUAL

### DISASSEMBLY

#### 1. General

- A. This procedure has the data necessary to disassemble the No. 4 and 9 flight spoiler assembly (IPL Figure 1; 1A, 5).
- B. Disassemble this component sufficiently to isolate the defects, do the necessary repairs, and put the component back to a serviceable condition.
- C. Refer to the Standard Overhaul Practices Manual (SOPM) for the SOPM subjects identified in this procedure.
- D. Refer to IPL Figure 1 for item numbers.

#### 2. Disassembly

##### A. References

<u>Reference</u>	<u>Title</u>
SOPM 20-50-03	BEARING AND BUSHING REPLACEMENT

##### B. Procedure

**NOTE:** For bearing and bushing replacement, refer to SOPM 20-50-03.

- (1) Use standard industry procedures to disassemble this component.

# 57-56-55

DISASSEMBLY

Page 301

Jul 01/2008



## COMPONENT MAINTENANCE MANUAL

### CLEANING

#### 1. General

- A. This procedure has the data necessary to clean the No. 4 and 9 flight spoiler assembly (IPL Figure 1; 1A, 5).
- B. Refer to the Standard Overhaul Practices Manual (SOPM) for the SOPM subjects identified in this procedure.
- C. Refer to IPL Figure 1 for item numbers.

#### 2. Cleaning

##### A. References

Reference	Title
SOPM 20-30-01	CLEANING AND RELUBRICATING BEARINGS
SOPM 20-30-03	GENERAL CLEANING PROCEDURES

##### B. Procedure

- (1) Clean the bearings (20) as specified in SOPM 20-30-01.
- (2) Use standard industry procedures and refer to SOPM 20-30-03 to clean all parts.

# 57-56-55

CLEANING

Page 401

Mar 01/2006





## COMPONENT MAINTENANCE MANUAL

### CHECK

#### 1. General

- A. This procedure has the data necessary to find defects in the material of the specified parts.
- B. Refer to FITS AND CLEARANCES for the design dimension and wear limits.
- C. Refer to the Standard Overhaul Practices Manual (SOPM) for the SOPM subjects identified in this procedure.
- D. Refer to IPL Figure 1 for item numbers.

#### 2. Check

##### A. References

Reference	Title
SOPM 20-20-02	PENETRANT METHODS OF INSPECTION
737 NDT Part 1, 51-05-01	Tap Test Inspection of Honeycomb Sandwich Structure
737 NDT Part 4, 51-00-02	Full Depth Honeycomb and Laminate Structure Inspection
737 NDT Part 9, 51-00-01	Non-Destructive Testing

##### B. Procedure

- (1) Use standard industry procedures to do a visual check of all the parts for defects. Do the penetrant or magnetic particle check if the visual check shows possible damage or if you suspect possible damage on the parts listed below.
  - (a) Do a penetrant check (SOPM 20-20-02) of these parts:
    - 1) Fitting (75, 80)
    - 2) End rib (160, 165, 170, 175)
    - 3) Center fitting (180, 185)
- (2) Do a check for cracks, corrosion, or missing potting and sealant at the ends of the panel bond assemblies.
- (3) Do a check of the honeycomb structure and bonded parts for evidence of delamination, internal water, scratches, and contour defects.
  - (a) If you see delamination or impact damage when you do a visual check, do an ultrasonic inspection or a tap test to find all damage. Refer to the 737 NDT Part 4, 51-00-02.
 

**NOTE:** For the tap test, use a small solid metal disk and tap the surface area lightly but firmly. You will hear a sharp sound when you tap on solid bonded areas, and dull sound on void areas. Refer to the 737 NDT Part 1, 51-05-01.
  - (b) Do a check on areas you suspect of containing water with the radiographic or thermographic method. Refer to the 737 NDT Part 9, 51-00-01.
  - (c) Do a check on the edges of the panel carefully for cuts and abrasions. Delamination starts very easily from damage to an edgemember of honeycomb panel.
- (4) Refer to the applicable 737 Structural Repair Manuals section for allowable damage and repair data.

# 57-56-55

CHECK

Page 501

Jul 01/2008



## COMPONENT MAINTENANCE MANUAL

### REPAIR

#### 1. General

- A. Instructions for repair, refinish, and replacement of the specified subassembly parts are included in each REPAIR when applicable:

<b>PART NUMBER</b>	<b>NAME</b>	<b>REPAIR</b>
—	REFINISH OF OTHER PARTS	1-1
113A4400	NO. 4 AND 9 FLIGHT SPOILER ASSEMBLY	2-1
113A4410	PANEL BOND ASSEMBLY	2-2

#### 2. Dimensioning Symbols

- A. Standard True Position Dimensioning Symbols used in the applicable repair procedures are shown in REPAIR-GENERAL, Figure 601.

# 57-56-55

REPAIR - GENERAL

Page 601

Jul 01/2008



## COMPONENT MAINTENANCE MANUAL

—	STRAIGHTNESS	∅	DIAMETER
▭	FLATNESS	S ∅	SPHERICAL DIAMETER
⊥	PERPENDICULARITY (OR SQUARENESS)	R	RADIUS
//	PARALLELISM	SR	SPHERICAL RADIUS
○	ROUNDNESS	( )	REFERENCE
⊘	CYLINDRICITY	BASIC	A THEORETICALLY EXACT DIMENSION USED
⌒	PROFILE OF A LINE	(BSC)	TO DESCRIBE SIZE, SHAPE OR LOCATION OF
⌒	PROFILE OF A SURFACE	OR	A FEATURE. FROM THIS FEATURE PERMISSIBLE
◎	CONCENTRICITY	DIM	VARIATIONS ARE ESTABLISHED BY TOLERANCES ON OTHER DIMENSIONS OR
≡	SYMMETRY		NOTES.
∠	ANGULARITY	-A-	DATUM
↗	RUNOUT	Ⓜ	MAXIMUM MATERIAL CONDITION (MMC)
↗	TOTAL RUNOUT	Ⓛ	LEAST MATERIAL CONDITION (LMC)
⊔	COUNTERBORE OR SPOTFACE	Ⓢ	REGARDLESS OF FEATURE SIZE (RFS)
∇	COUNTERSINK	Ⓟ	PROJECTED TOLERANCE ZONE
⊕	THEORETICAL EXACT POSITION OF A FEATURE (TRUE POSITION)	FIM	FULL INDICATOR MOVEMENT

### EXAMPLES

$\boxed{\text{—}} \boxed{0.002}$	STRAIGHT WITHIN 0.002	$\boxed{\text{◎}} \boxed{\text{∅}} \boxed{0.0005} \boxed{\text{C}}$	CONCENTRIC TO DATUM C WITHIN 0.0005 DIAMETER
$\boxed{\text{⊥}} \boxed{0.002} \boxed{\text{B}}$	PERPENDICULAR TO DATUM B WITHIN 0.002	$\boxed{\text{≡}} \boxed{0.010} \boxed{\text{A}}$	SYMMETRICAL WITH DATUM A WITHIN 0.010
$\boxed{\text{//}} \boxed{0.002} \boxed{\text{A}}$	PARALLEL TO DATUM A WITHIN 0.002	$\boxed{\text{∠}} \boxed{0.005} \boxed{\text{A}}$	ANGULAR TOLERANCE 0.005 WITH DATUM A
$\boxed{\text{○}} \boxed{0.002}$	ROUND WITHIN 0.002	$\boxed{\text{⊕}} \boxed{\text{∅}} \boxed{0.002} \boxed{\text{Ⓢ}} \boxed{\text{B}}$	LOCATED AT TRUE POSITION WITHIN 0.002 DIA RELATIVE TO DATUM B, REGARDLESS OF FEATURE SIZE
$\boxed{\text{⊘}} \boxed{0.010}$	CYLINDRICAL SURFACE MUST LIE BETWEEN TWO CONCENTRIC CYLINDERS, ONE OF WHICH HAS A RADIUS 0.010 INCH GREATER THAN THE OTHER	$\boxed{\text{⊥}} \boxed{\text{∅}} \boxed{0.010} \boxed{\text{Ⓜ}} \boxed{\text{A}}$	AXIS IS TOTALLY WITHIN A CYLINDER OF 0.010 INCH DIAMETER, PERPENDICULAR TO DATUM A, AND EXTENDING 0.510 INCH ABOVE DATUM A, MAXIMUM MATERIAL CONDITION
$\boxed{\text{⌒}} \boxed{0.006} \boxed{\text{A}}$	EACH LINE ELEMENT OF THE SURFACE AT ANY CROSS SECTION MUST LIE BETWEEN TWO PROFILE BOUNDARIES 0.006 INCH APART RELATIVE TO DATUM A	$\boxed{0.510} \boxed{\text{Ⓟ}}$	THEORETICALLY EXACT DIMENSION IS 2.000
$\boxed{\text{⌒}} \boxed{0.020} \boxed{\text{A}}$	SURFACES MUST LIE WITHIN PARALLEL BOUNDARIES 0.020 INCH APART AND EQUALLY DISPOSED ABOUT TRUE PROFILE		OR 2.000 BSC

True Position Dimensioning Symbols  
Figure 601

# 57-56-55

REPAIR - GENERAL

Page 602

Mar 01/2006



## COMPONENT MAINTENANCE MANUAL

### REFINISH OF OTHER PARTS - REPAIR 1-1

#### 1. General

- A. This procedure has the data necessary to refinish the parts which are not given in the specified repairs.
- B. Refer to the Standard Overhaul Practices Manual (SOPM) for the SOPM subjects identified in this procedure.
- C. Refer to IPL Figure 1 for item numbers.

#### 2. Refinish of Other Parts

- A. Consumable Materials

**NOTE:** Equivalent substitutes may be used.

Reference	Description	Specification
C00033	Coating - Exterior Protective Enamel, Flexibility Use	BMS10-60, Type II
C00175	Primer - Urethane Compatible, Corrosion Resistant (Less Than 1% Aromatic Amines)	BMS10-79, Type III

- B. References

Reference	Title
SOPM 20-30-02	STRIPPING OF PROTECTIVE FINISHES
SOPM 20-41-01	DECODING TABLE FOR BOEING FINISH CODES
SOPM 20-60-02	FINISHING MATERIALS

- C. General

(1) Instructions for the repair of the parts listed in REPAIR 1-1, Table 601 is for repair of the initial finish.

- D. Procedure

**NOTE:** For stripping of protective finishes, refer to SOPM 20-30-02. For decoding table for Boeing finish codes, refer to SOPM 20-41-01. For finishing materials, refer to SOPM 20-60-02.

(1) Refer to REPAIR 1-1, Table 601 for refinish details.

**Table 601:** Refinish Details

IPL FIG. & ITEM	MATERIAL	FINISH
IPL Fig. 1		
Seal retainer (100)	Aluminum alloy	Chemical treat (F-17.07). Apply primer, C00175 (F-19.47). Apply enamel coating, C00033 (F-19.39-707).

# 57-56-55

REPAIR 1-1

Page 601

Jul 01/2008



## COMPONENT MAINTENANCE MANUAL

### NO. 4 AND 9 FLIGHT SPOILER ASSEMBLY - REPAIR 2-1

113A4400-1, -2, -3, -4

#### 1. General

- A. This procedure has the data necessary to repair and refinish the No. 4 and 9 flight spoiler assembly (1A, 5).
- B. Refer to the Standard Overhaul Practices Manual (SOPM) for the SOPM subjects identified in this procedure.
- C. Refer to the REPAIR-GENERAL, Figure 601 for the Standard True Position Dimensioning Symbols shown in the repair.
- D. Refer to IPL Figure 1 for item numbers.

#### 2. Bushing (10, 15) Replacement

- A. Consumable Materials

**NOTE:** Equivalent substitutes may be used.

Reference	Description	Specification
A00247	Sealant - Pressure And Environmental - Chromate Type	BMS 5-95

- B. References

Reference	Title
SOPM 20-30-02	STRIPPING OF PROTECTIVE FINISHES
SOPM 20-41-01	DECODING TABLE FOR BOEING FINISH CODES
SOPM 20-50-03	BEARING AND BUSHING REPLACEMENT
SOPM 20-60-04	MISCELLANEOUS MATERIALS

- C. Procedure

**NOTE:** For stripping of protective finishes, refer to SOPM 20-30-02. For decoding table for Boeing finish codes, refer to SOPM 20-41-01. For miscellaneous materials, refer to SOPM 20-60-04.

- (1) Remove the bushing (10, 15) from the end rib (160, 165, 170, 175).
- (2) Install the new bushing (10, 15) on the end rib (160, 165, 170, 175) with sealant, A00247. Use the shrink fit method (SOPM 20-50-03).
- (3) Ream the inside diameter of the bushing (10, 15) to the dimensions shown in REPAIR 2-1, Figure 601.
- (4) Break all sharp edges.

#### 3. Bearing (20) Replacement

- A. Consumable Materials

**NOTE:** Equivalent substitutes may be used.

# 57-56-55

REPAIR 2-1

Page 601

Jul 01/2008



## COMPONENT MAINTENANCE MANUAL

Reference	Description	Specification
A00247	Sealant - Pressure And Environmental - Chromate Type	BMS 5-95

### B. References

Reference	Title
SOPM 20-50-03	BEARING AND BUSHING REPLACEMENT
SOPM 20-60-04	MISCELLANEOUS MATERIALS

### C. Procedure

**NOTE:** For miscellaneous materials, refer to SOPM 20-60-04.

- (1) Remove the bearing (20) from the center fitting (180, 185).
- (2) Install the new bearing (20) on the center fitting (180, 185) with sealant, A00247 and roller swage (SOPM 20-50-03).

## 4. Bushing (25) Replacement

### A. Consumable Materials

**NOTE:** Equivalent substitutes may be used.

Reference	Description	Specification
A00247	Sealant - Pressure And Environmental - Chromate Type	BMS 5-95

### B. References

Reference	Title
SOPM 20-50-03	BEARING AND BUSHING REPLACEMENT
SOPM 20-60-04	MISCELLANEOUS MATERIALS

### C. Procedure

**NOTE:** For miscellaneous materials, refer to SOPM 20-60-04.

- (1) Remove the bushing (25) from the center fitting (180, 185).
- (2) Install the new bushing (25) on the center fitting (180, 185) with sealant, A00247. Use the shrink fit method (SOPM 20-50-03).

## 5. Aluminum Foil Marker Replacement

### A. Procedure

- (1) Remove the damaged aluminum foil marker (200) from the panel bond assembly (120, 125).
- (2) Clean the surface.
- (3) Install the new aluminum foil marker (200) on the panel bond assembly (120, 125). See REPAIR 2-1, Figure 602 and SOPM 20-50-05.

## 6. No. 4 and 9 Flight Spoiler Assembly Refinish

### A. Consumable Materials

**NOTE:** Equivalent substitutes may be used.

# 57-56-55

REPAIR 2-1  
Page 602  
Jul 01/2008



## COMPONENT MAINTENANCE MANUAL

Reference	Description	Specification
C00033	Coating - Exterior Protective Enamel, Flexibility Use	BMS10-60, Type II

### B. References

Reference	Title
SOPM 20-30-02	STRIPPING OF PROTECTIVE FINISHES
SOPM 20-41-01	DECODING TABLE FOR BOEING FINISH CODES
SOPM 20-60-02	FINISHING MATERIALS

### C. Procedure

**NOTE:** For stripping of protective finishes, refer to SOPM 20-30-02. For decoding table for Boeing finish codes, refer to SOPM 20-41-01. For finishing materials, refer to SOPM 20-60-02.

- (1) Apply enamel coating, C00033 (F-19.39-707). No finish on bearings (20), bushings (10, 15, 25), seals (105), seal retainers (100), and rub strip (130).

# 57-56-55

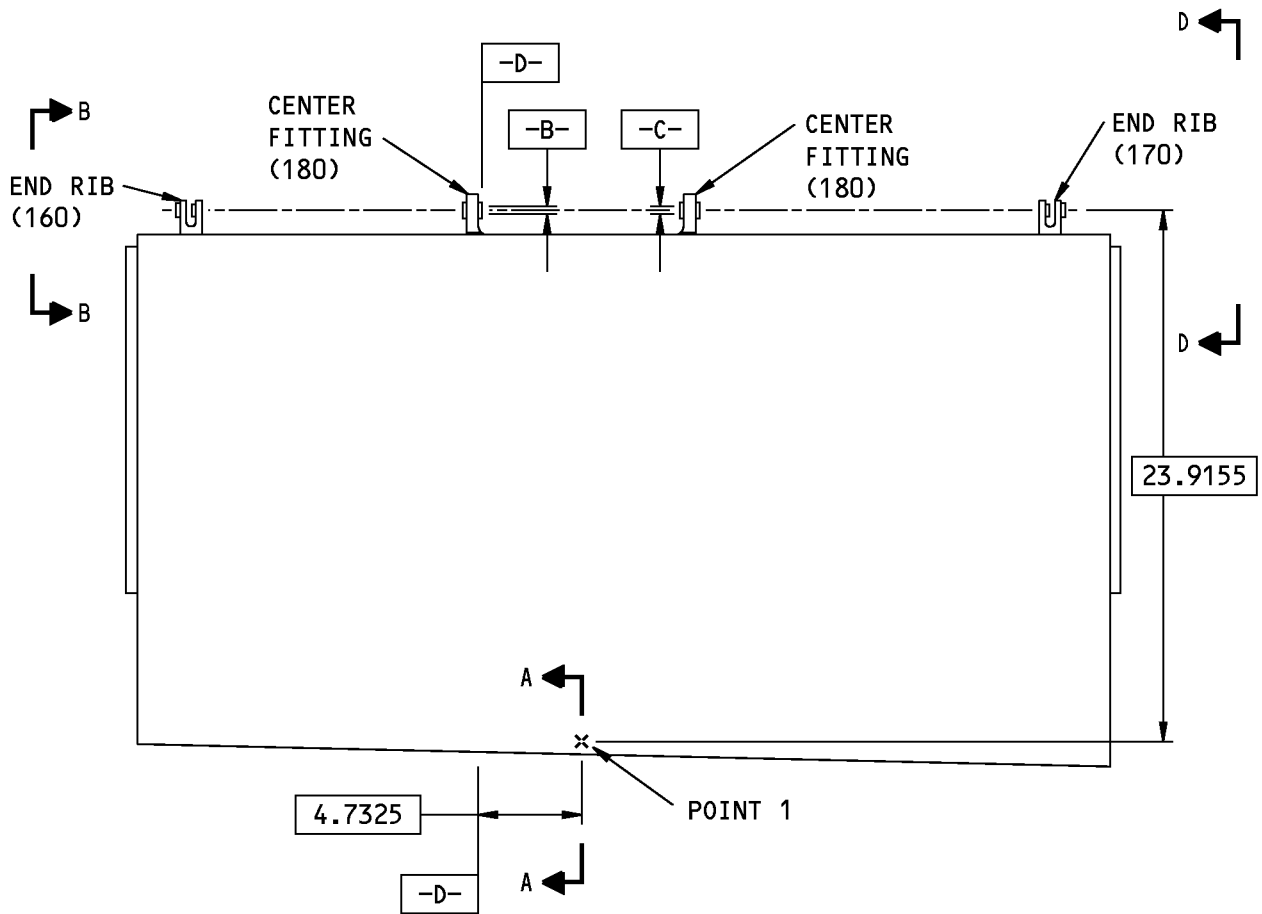
REPAIR 2-1

Page 603

Mar 01/2006



COMPONENT MAINTENANCE MANUAL



113A4400-1,-3 SHOWN  
 113A4400-2,-4 OPPOSITE  
 (THIS VIEW IS PERPENDICULAR TO DATUM -A-)

G37553 S00041007791\_V2

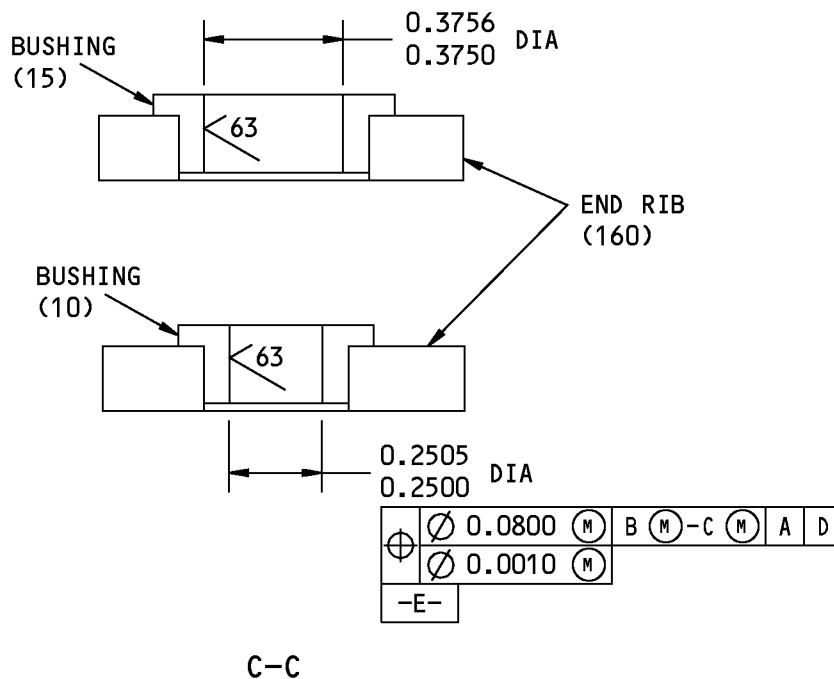
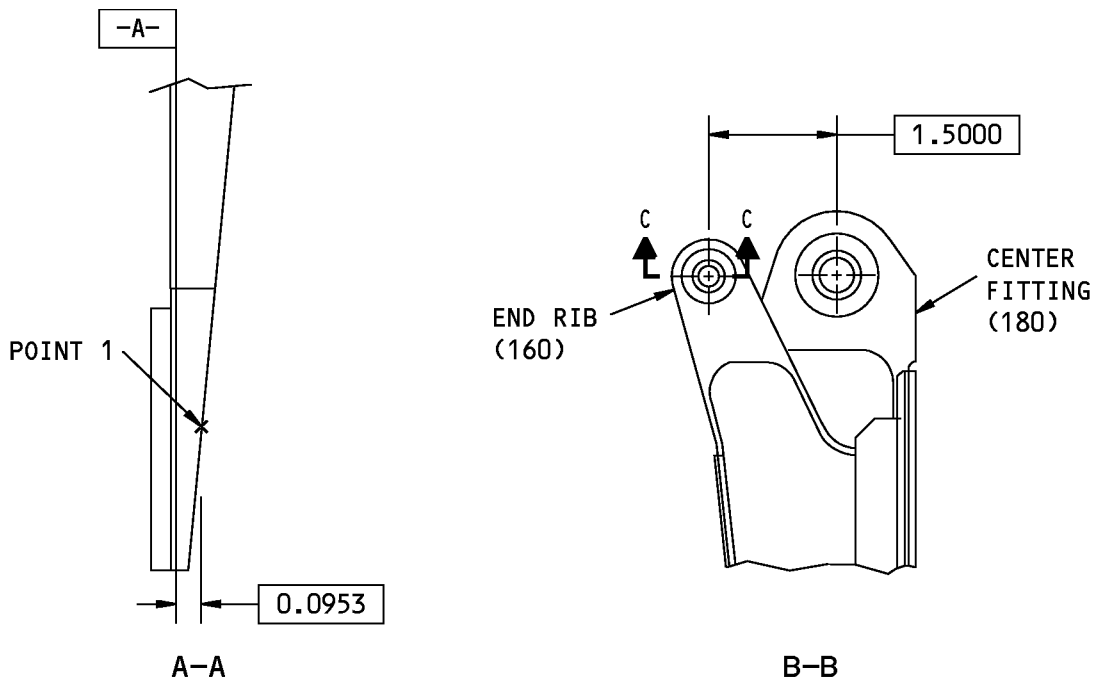
113A4400-1,-2,-3,-4 No. 4 and 9 Flight Spoiler Assembly Repair  
 Figure 601 (Sheet 1 of 3)

**57-56-55**

REPAIR 2-1  
 Page 604  
 Jul 01/2008



COMPONENT MAINTENANCE MANUAL



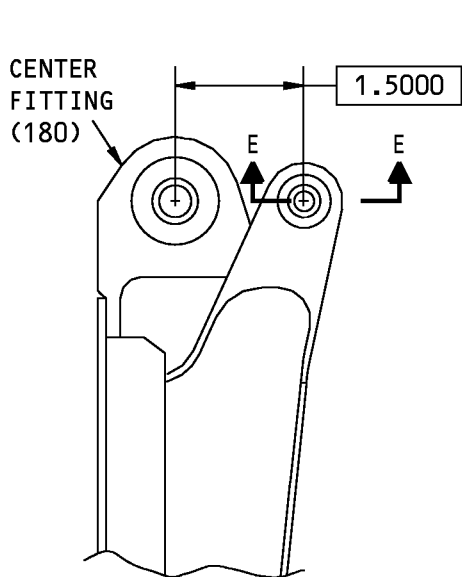
G37555 S00041007792\_V2

113A4400-1,-2,-3,-4 No. 4 and 9 Flight Spoiler Assembly Repair  
Figure 601 (Sheet 2 of 3)

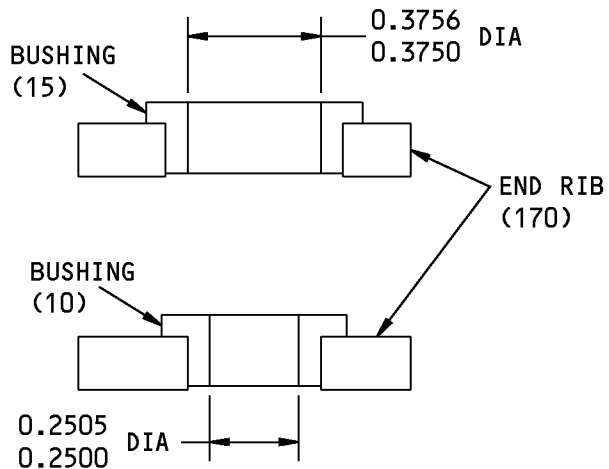
**57-56-55**

REPAIR 2-1  
Page 605  
Jul 01/2008

COMPONENT MAINTENANCE MANUAL



D-D



⊕	∅ 0.0800	(M)	B	(M)	-C	(M)	A	D
	∅ 0.0010	(M)						
-F-								

(2 COAXIAL HOLES)

E-E

63/ ALL MACHINED SURFACES UNLESS SHOWN DIFFERENTLY

BREAK ALL SHARP EDGES

ITEM NUMBERS REFER TO IPL FIG. 1

ALL DIMENSIONS ARE IN INCHES

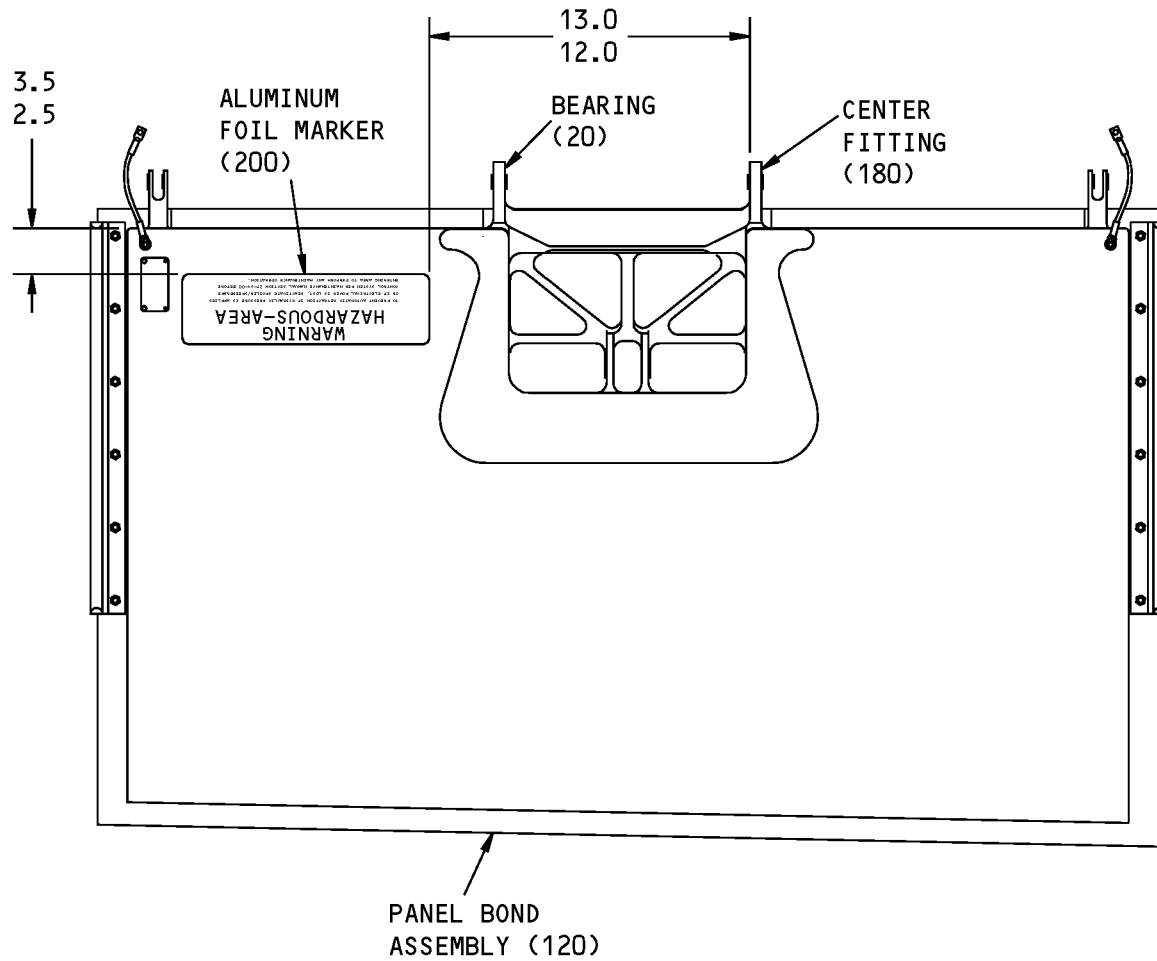
G37557 S00041007793\_V2

113A4400-1,-2,-3,-4 No. 4 and 9 Flight Spoiler Assembly Repair  
Figure 601 (Sheet 3 of 3)

**57-56-55**

REPAIR 2-1  
Page 606  
Jul 01/2008

COMPONENT MAINTENANCE MANUAL



ITEM NUMBERS REFER TO IPL FIG. 1  
ALL DIMENSIONS ARE IN INCHES

Miscellaneous Parts Replacement  
Figure 602

**57-56-55**

REPAIR 2-1  
Page 607  
Mar 01/2006



## COMPONENT MAINTENANCE MANUAL

### PANEL BOND ASSEMBLY - REPAIR 2-2

113A4410-1, -2

#### 1. General

- A. This procedure has the data necessary to repair and refinish the panel bond assembly (120, 125)
- B. Refer to the Standard Overhaul Practices Manual (SOPM) for the SOPM subjects identified in this procedure.
- C. Refer to REPAIR-GENERAL, Figure 601 for the Standard True Position Dimensioning Symbols shown in the repair.
- D. Refer to IPL Figure 1 for item numbers.
- E. General repair details:
  - (1) Material:
    - (a) Center fitting (180, 185): Aluminum alloy
    - (b) End rib (160, 165, 170, 175): Aluminum alloy
  - (2) Shot peen: Center fitting (180, 185):
    - (a) All repaired surfaces and bushing holes
    - (b) Intensity 0.012A - 0.017A
    - (c) Coverage 1.0 automated, 2.0 manual
    - (d) Overspray is permitted

#### 2. End Rib Repair

##### A. Procedure

**NOTE:** For stripping of protective finishes, refer to SOPM 20-30-02. For finishing materials, refer to SOPM 20-60-02

- (1) Ream the holes for the bushings (10, 15) to remove defects, cracks and/or corrosion up to the limit shown in REPAIR 2-2, Figure 601.
- (2) Break all sharp edges.
- (3) Do a penetrant check (SOPM 20-20-02) on the areas you reamed.
- (4) Make the oversize bushing as shown in REPAIR 2-2, Figure 603 and the steps shown below.
  - (a) Bushing (10) material: 15-5PH or 17-4PH CRES.
  - (b) Bushing (15) material: Aluminum-nickel-bronze.
  - (c) Break all sharp edges.
  - (d) Bushing (10) finish: Zinc-nickel plate.
  - (e) Bushing (15) finish: Cadmium plate.
- (5) Install the oversize bushing as shown in REPAIR 2-1, Paragraph 2.C.(2) thru REPAIR 2-1, Paragraph 2.C.(4).

#### 3. Center Fitting Repair

##### A. Procedure

**NOTE:** For shotpeening, refer to SOPM 20-10-03. For stripping of protective finishes, refer to SOPM 20-30-02. For finishing materials, refer to SOPM 20-60-02.

# 57-56-55

REPAIR 2-2

Page 601

Jul 01/2008



## COMPONENT MAINTENANCE MANUAL

- (1) Ream the hole for the bushing (25) to remove defects, cracks and/or corrosion up to the limit shown in REPAIR 2-2, Figure 602.
- (2) Break all sharp edges.
- (3) Do a penetrant check (SOPM 20-20-02) on the areas you reamed.
- (4) Make the oversize bushing as shown in REPAIR 2-2, Figure 603 and the steps shown below.
  - (a) Bushing (25) material: Aluminum-nickel-bronze.
  - (b) Break all sharp edges.
  - (c) Bushing (25) finish: Cadmium plate all over but not in holes.
- (5) Install the oversize bushing as shown in REPAIR 2-1, Paragraph 4.C.(2).

#### 4. Panel Bond Assembly Refinish

##### A. Consumable Materials

**NOTE:** Equivalent substitutes may be used.

Reference	Description	Specification
C00175	Primer - Urethane Compatible, Corrosion Resistant (Less Than 1% Aromatic Amines)	BMS10-79, Type III

##### B. References

Reference	Title
SOPM 20-30-02	STRIPPING OF PROTECTIVE FINISHES
SOPM 20-41-01	DECODING TABLE FOR BOEING FINISH CODES
SOPM 20-60-02	FINISHING MATERIALS

##### C. Procedure

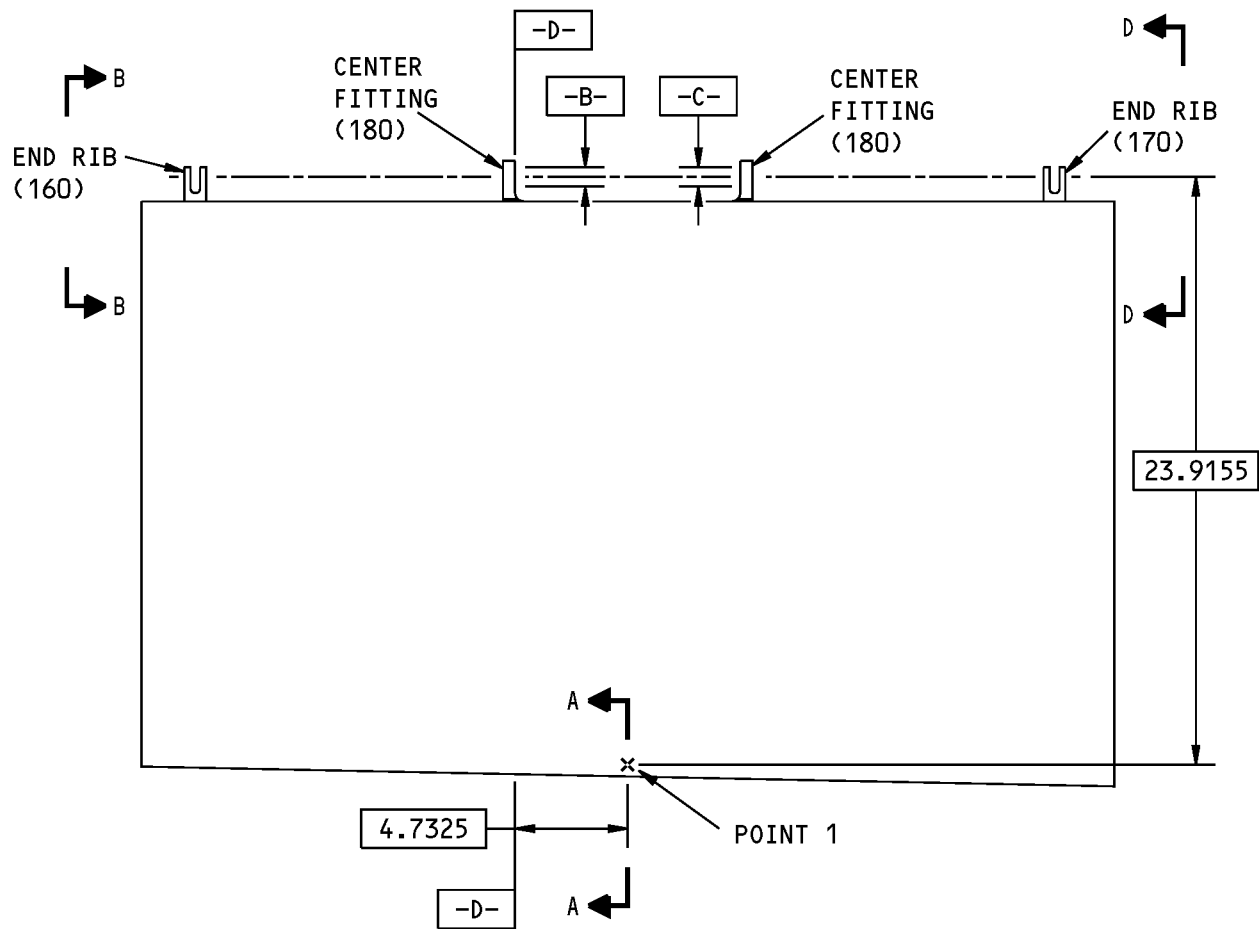
**NOTE:** For stripping of protective finishes, refer to SOPM 20-30-02. For decoding table for Boeing finish codes, refer to SOPM 20-41-01. For finishing materials, refer to SOPM 20-60-02.

- (1) Apply primer, C00175 (F-19.47).

# 57-56-55

REPAIR 2-2  
Page 602  
Jul 01/2008

COMPONENT MAINTENANCE MANUAL



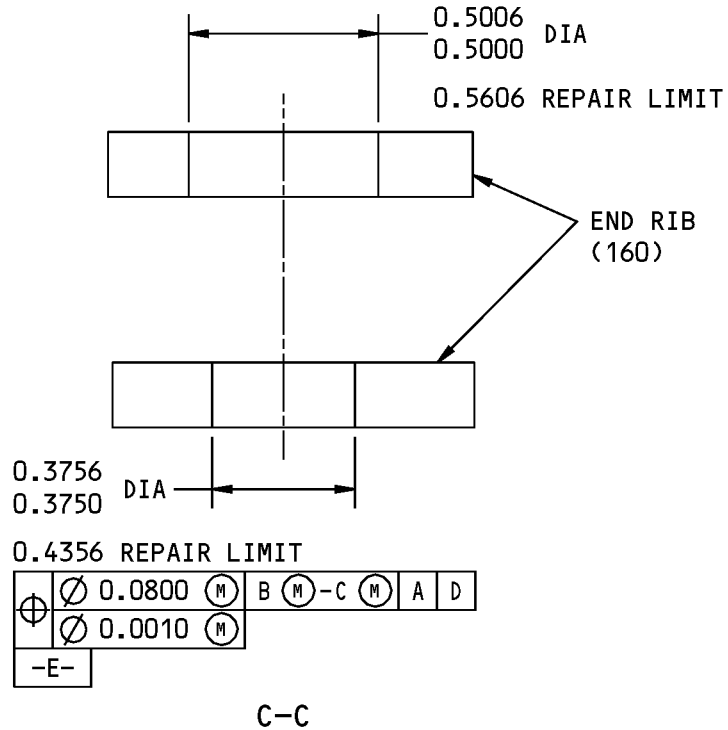
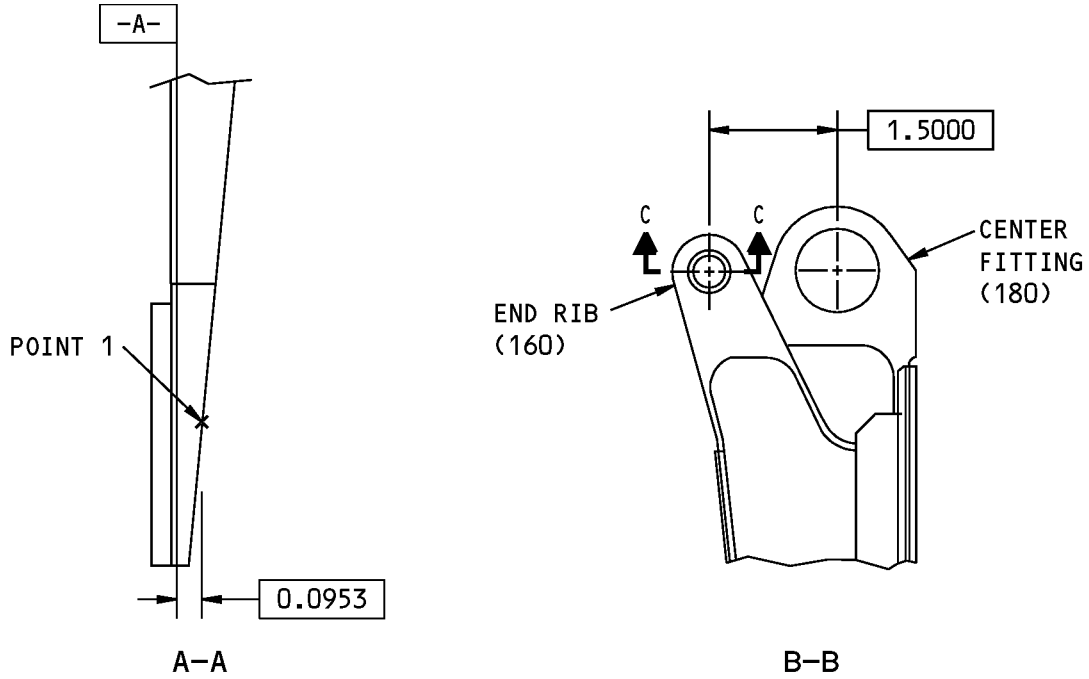
113A4410-1 SHOWN  
 113A4410-2 OPPOSITE  
 (THIS VIEW IS PERPENDICULAR TO DATUM -A-)

113A4410-1,-2 Bond Panel Assembly Repair  
 Figure 601 (Sheet 1 of 3)

**57-56-55**

REPAIR 2-2  
 Page 603  
 Mar 01/2006

COMPONENT MAINTENANCE MANUAL

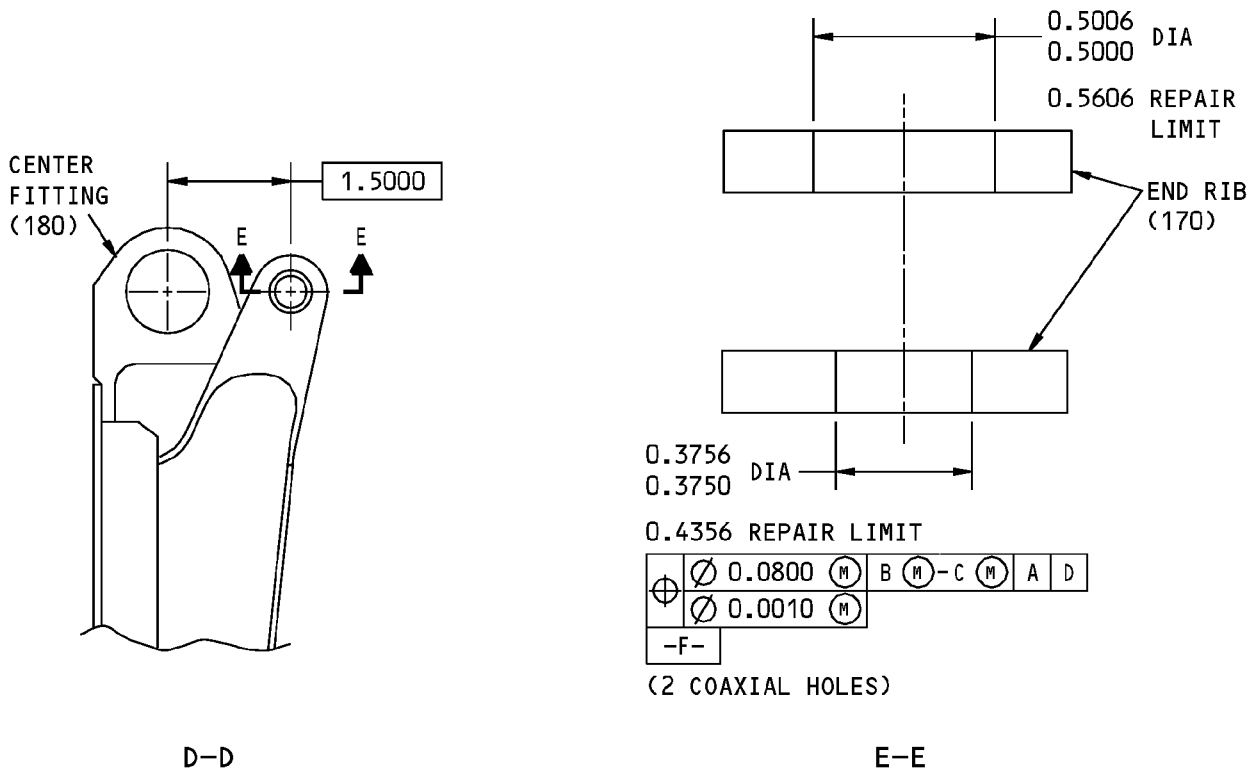


113A4410-1,-2 Bond Panel Assembly Repair  
Figure 601 (Sheet 2 of 3)

**57-56-55**

REPAIR 2-2  
Page 604  
Mar 01/2006

COMPONENT MAINTENANCE MANUAL



63/ ALL MACHINED SURFACES UNLESS SHOWN DIFFERENTLY  
 BREAK ALL SHARP EDGES  
 ITEM NUMBERS REFER TO IPL FIG. 1  
 ALL DIMENSIONS ARE IN INCHES

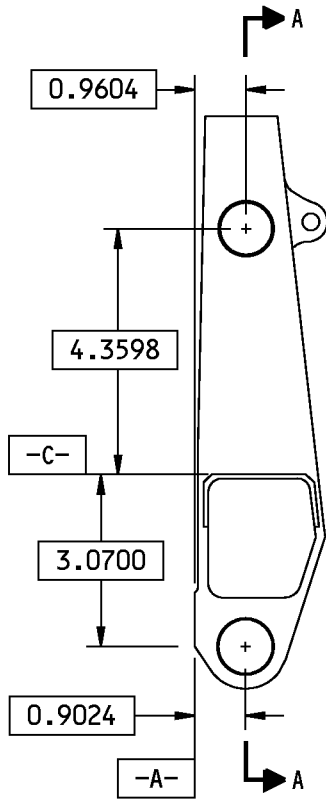
113A4410-1,-2 Bond Panel Assembly Repair  
 Figure 601 (Sheet 3 of 3)

**57-56-55**

REPAIR 2-2  
 Page 605  
 Mar 01/2006



COMPONENT MAINTENANCE MANUAL

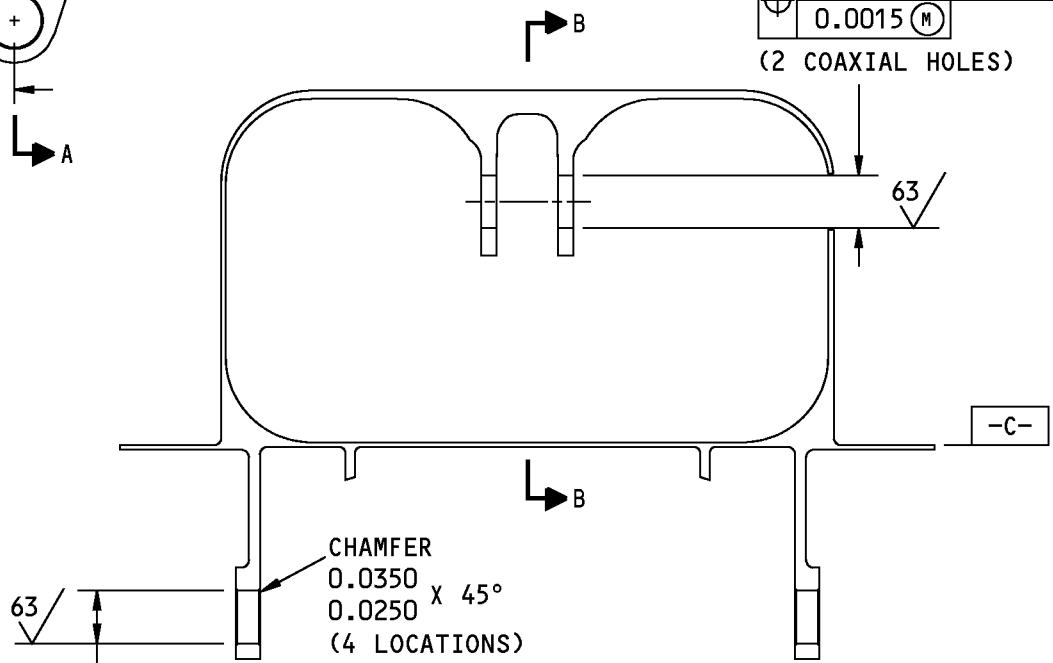


0.9379 DESIGN DIA  
0.9370

1.0079 REPAIR LIMIT

⊕	∅	0.0100	M	A	C
		0.0015			

(2 COAXIAL HOLES)



CHAMFER  
0.0350 X 45°  
0.0250  
(4 LOCATIONS)

0.9698 DIA  
0.9688

⊕	∅	0.0100	M	A	C	B

(2 LOCATIONS)

A-A

1562740 S0000289396\_V1

113A4420-1 Center Fitting Repair  
Figure 602 (Sheet 1 of 2)

**57-56-55**

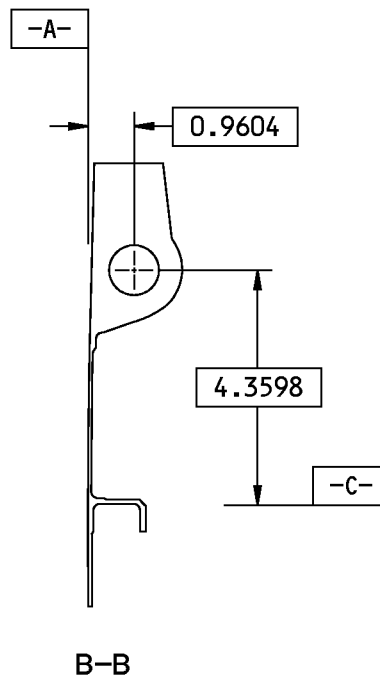
REPAIR 2-2

Page 606

Jul 01/2008



# COMPONENT MAINTENANCE MANUAL



63/ ALL MACHINED SURFACES UNLESS  
 SHOWN DIFFERENTLY

BREAK ALL SHARP EDGES

ITEM NUMBERS REFER TO IPL FIG. 1

ALL DIMENSIONS ARE IN INCHES

1562745 S0000289397\_V1

113A4420-1 Center Fitting Repair  
 Figure 602 (Sheet 2 of 2)

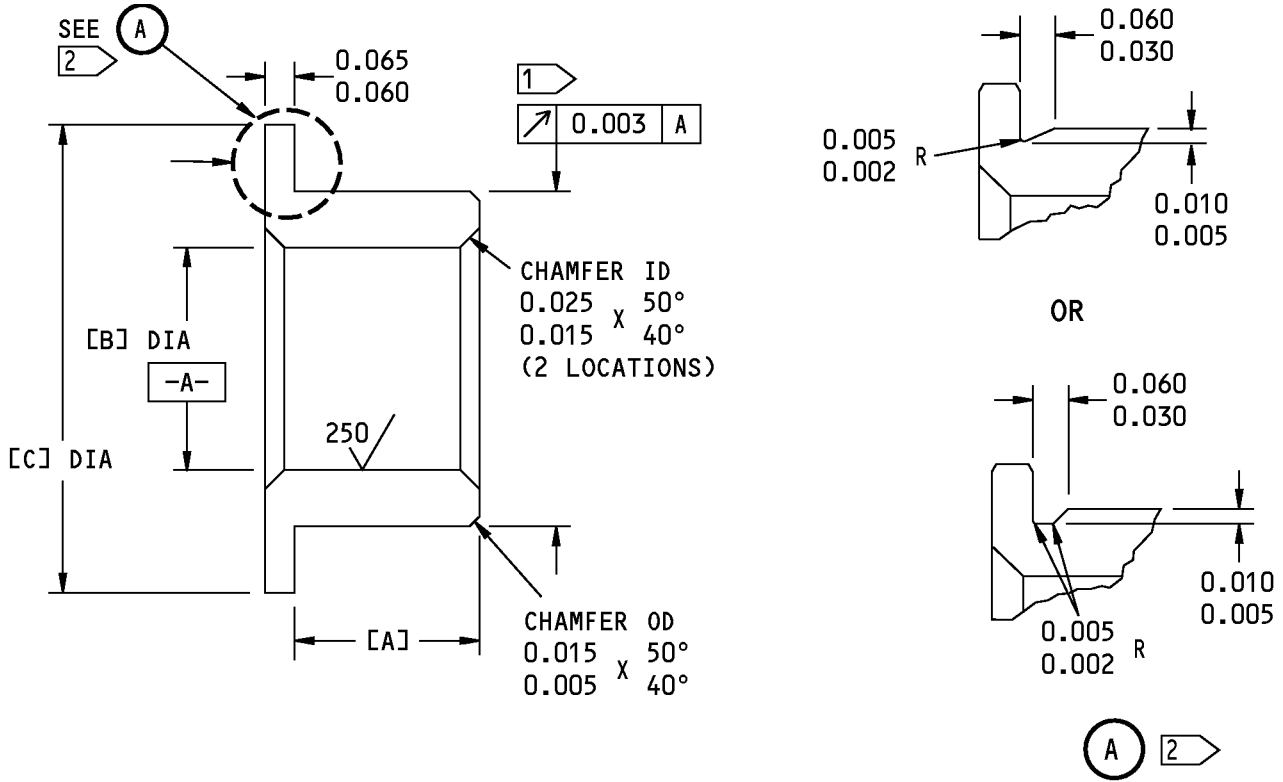
## 57-56-55

REPAIR 2-2

Page 607

Jul 01/2008

COMPONENT MAINTENANCE MANUAL



BUSHING TO BE REPLACED (IPL FIG. 1)	[A]	[B]	[C]	INTERFERENCE
10	0.140 0.135	0.2505 0.2500	0.540 0.530	0.0015 0.0003
15	0.140 0.135	0.3756 0.3750	0.630 0.620	0.0016 0.0004
25	0.290 0.285	0.7515 0.7500	1.260 1.240	0.0023 0.0004

- 1 THE OUTSIDE DIAMETER OF THE BUSHING AFTER PLATING IS EQUAL TO THE INSIDE DIAMETER OF THE LUG HOLE PLUS THE INTERFERENCE
- 2 FOR BUSHING (25) ONLY.

63/ ALL MACHINED SURFACES UNLESS SHOWN DIFFERENTLY  
 BREAK ALL SHARP EDGES  
 ITEM NUMBERS REFER TO IPL FIG. 1  
 ALL DIMENSIONS ARE IN INCHES

1562747 S0000289398\_V1

Oversizing Bushing Details  
 Figure 603

**57-56-55**



## COMPONENT MAINTENANCE MANUAL

### ASSEMBLY

#### 1. General

- A. This procedure has the data necessary to assemble the No. 4 and 9 flight spoiler assembly (1A, 5).
- B. Refer to the Standard Overhaul Practices Manual (SOPM) for the SOPM subjects identified in this procedure.
- C. Refer to IPL Figure 1 for item numbers.

#### 2. Assembly

##### A. Consumable Materials

**NOTE:** Equivalent substitutes may be used.

Reference	Description	Specification
A00247	Sealant - Pressure And Environmental - Chromate Type	BMS 5-95
C00259	Primer - Chemical And Solvent Resistant Finish, Epoxy Resin	BMS10-11, Type I
C00528	Compound - Corrosion Preventive, Petroleum Hot Application (Soft Film)	MIL-C-11796, Class III
C00862	Coating - Chemical Conversion - Alodine 600	

##### B. References

Reference	Title
SOPM 20-11-03	REPAIR OF ELECTRICAL TERMINATIONS AND ELECTRICAL BONDING AREAS
SOPM 20-41-01	DECODING TABLE FOR BOEING FINISH CODES
SOPM 20-41-02	APPLICATION OF CHEMICAL AND SOLVENT RESISTANT FINISHES
SOPM 20-43-03	CHEMICAL CONVERSION COATINGS FOR ALUMINUM
SOPM 20-50-01	BOLT AND NUT INSTALLATION
SOPM 20-60-02	FINISHING MATERIALS
SOPM 20-60-03	LUBRICANTS
SOPM 20-60-04	MISCELLANEOUS MATERIALS

##### C. Procedure

**NOTE:** For the repair of electrical terminations and electrical bonding, refer to SOPM 20-11-03. For the decoding table for Boeing finish codes, refer to SOPM 20-41-01. For bolt and nut installation, refer to SOPM 20-50-01. For finishing materials, refer to SOPM 20-60-02. For lubricants, refer to SOPM 20-60-03. For miscellaneous materials, refer to SOPM 20-60-04.

- (1) Use standard industry procedures and the steps shown below to assemble this component.
- (2) Install the jumper assemblies (45) on the panel bond assembly (120, 125).
  - (a) Remove the finish, if necessary, in areas where you will install the jumper assemblies (45).

# 57-56-55

ASSEMBLY

Page 701

Mar 01/2009



## COMPONENT MAINTENANCE MANUAL

- (b) Apply Alodine 600 coating, C00862 (SOPM 20-43-03) by hand, brush, swab, or spray application (F-17.28) in areas you just removed the finish.
  - (c) Install the jumper assemblies (45) on the panel bond assembly (120, 125) with bolts (30), washers (35), and nuts (40). Use three washers for installation, one washer (35) under the bolt head, and one washer (35) on each side of the jumper assembly (45).
  - (d) Fillet seal the ends of the jumper assemblies (45) with sealant, A00247.
- (3) Install the seal (105) on the panel bond assembly (120, 125).
- (a) In areas around the holes for bolts (85), apply primer, C00259 preventive compound (SOPM 20-41-02) to all areas of the holes and countersink, counterbore, or other recess.  
**NOTE:** Do the next step immediately after you complete this step.
  - (b) In areas around the holes for bolts (85), apply compound, C00528 to all areas of the holes and countersink, counterbore, or other recess.  
**NOTE:** Do the next step immediately after you complete this step.
  - (c) Install the seal (105) and seal retainer (100) on the panel bond assembly (120, 125) with bolts (85), washers (90), and nuts (95).

# 57-56-55

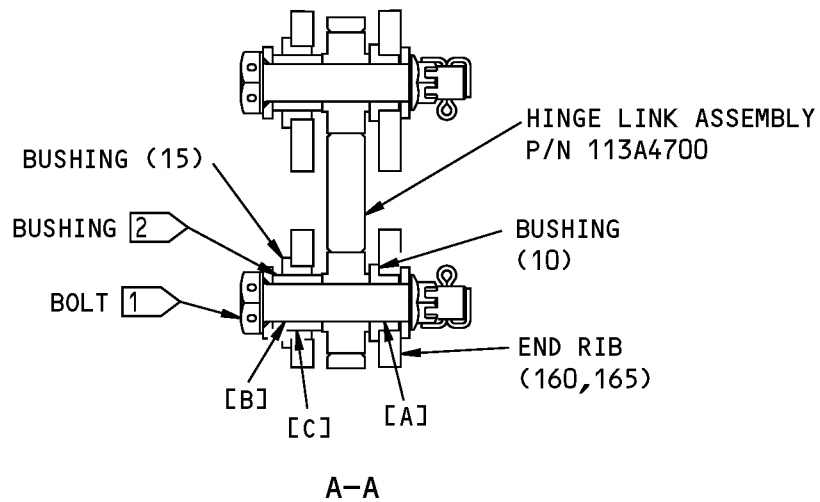
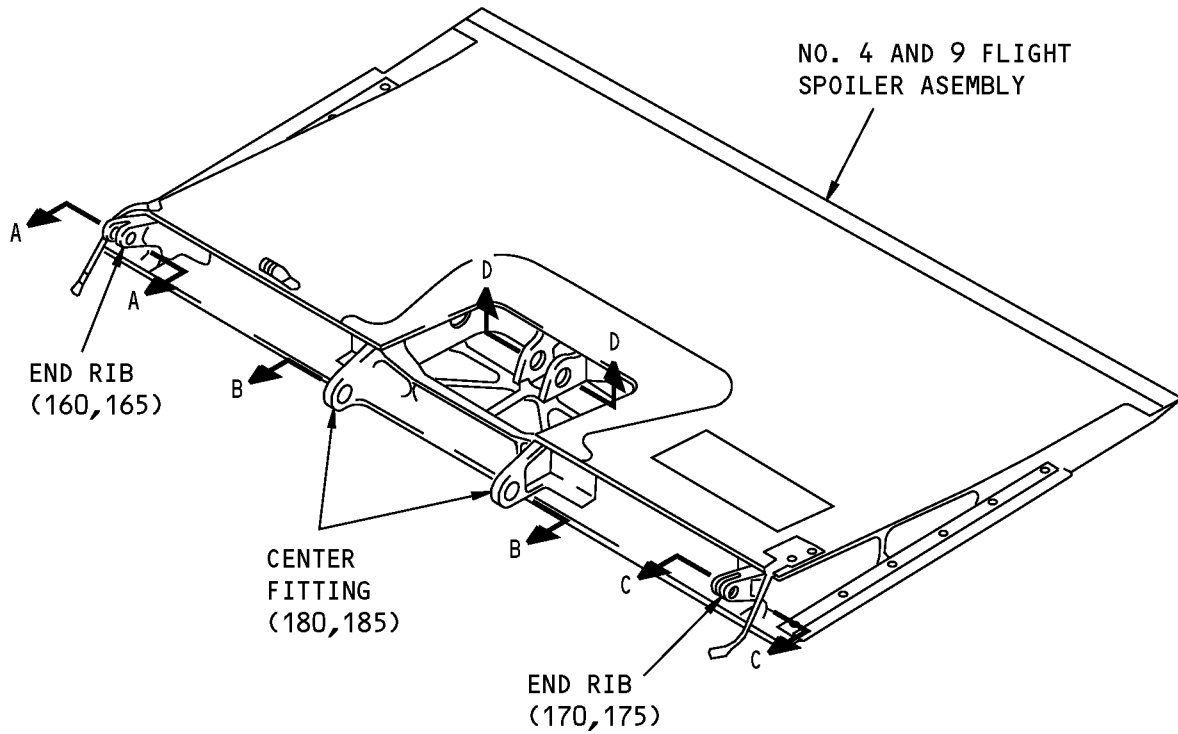
ASSEMBLY

Page 702

Nov 01/2008

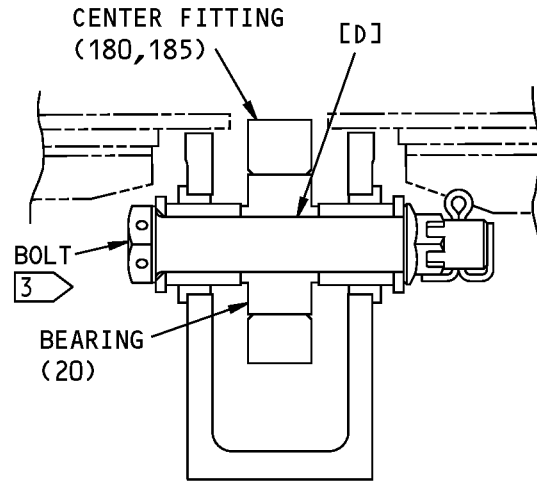
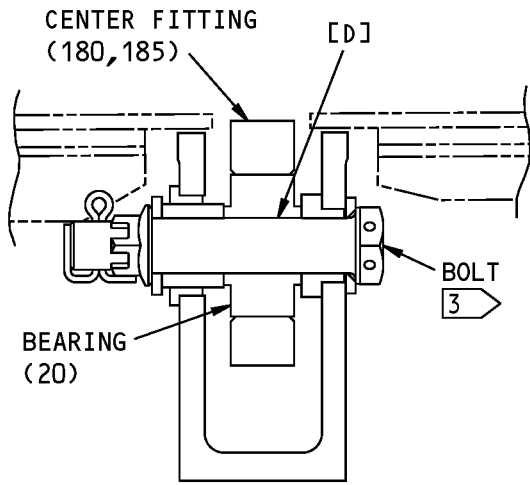
COMPONENT MAINTENANCE MANUAL

FITS AND CLEARANCES

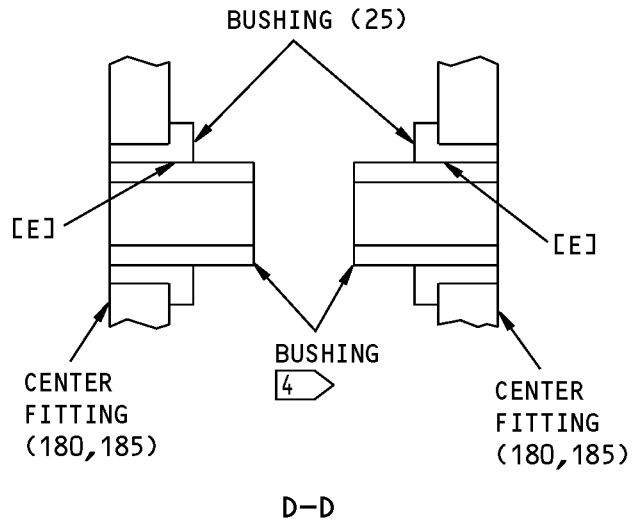
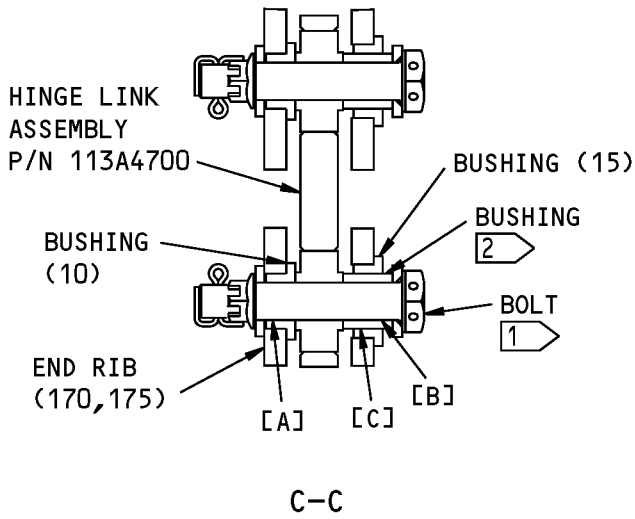


Fits and Clearances  
Figure 801 (Sheet 1 of 3)

COMPONENT MAINTENANCE MANUAL



B-B



ITEM NUMBERS REFER TO IPL FIG. 1

Fits and Clearances  
Figure 801 (Sheet 2 of 3)

**57-56-55**

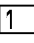
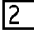

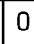
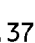
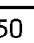
FITS AND CLEARANCES

Page 802

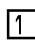
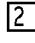
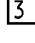
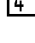
Mar 01/2006



## COMPONENT MAINTENANCE MANUAL

REF LETTER	REF IPL	DESIGN DIMENSION*				SERVICE WEAR LIMIT*		
	FIG. 1, MATING ITEM NO.	DIMENSION		ASSEMBLY CLEARANCE		DIMENSION		MAXIMUM CLEARANCE
		MIN	MAX	MIN	MAX	MIN	MAX	
[A]	ID BUSHING (10)	0.2500	0.2505	0.0005	0.0020		0.2530	0.005
	OD BOLT 	0.2485	0.2495			0.2480		
[B]	ID BUSHING 	0.2500	0.2505	0.0005	0.0020		0.2530	0.005
	OD BOLT 	0.2485	0.2495			0.2480		
[C]	ID BUSHING (15)	0.3750	0.3756	0.0005	0.0016		0.3795	0.005
	OD BUSHING 	0.3740	0.3745			0.3700		
[D]	ID BEARING (20)	0.3750	0.3755	0.0005	0.0020		0.3780	0.005
	OD BOLT 	0.3735	0.3745			0.3730		
[E]	ID BUSHING (25)	0.7500	0.7515	0.0010	0.0030		0.7775	0.005
	OD BUSHING 	0.7485	0.7490			0.7465		

\* ALL DIMENSIONS ARE IN INCHES

-  INSTALLATION BOLT, P/N  
BACB30NM4DK16
-  INSTALLATION BUSHING, P/N  
BACB28AK04-034
-  INSTALLATION BOLT, P/N  
BACB30NM6DK22
-  INSTALLATION BUSHING, P/N  
BACB28BA1012063

Fits and Clearances  
Figure 801 (Sheet 3 of 3)

**57-56-55**  
FITS AND CLEARANCES  
Page 803  
Mar 01/2006





COMPONENT MAINTENANCE MANUAL

SPECIAL TOOLS, FIXTURES, AND EQUIPMENT

**(NOT APPLICABLE)**

**57-56-55**

SPECIAL TOOLS, FIXTURES, AND EQUIPMENT

Page 901

Mar 01/2006



## COMPONENT MAINTENANCE MANUAL

### ILLUSTRATED PARTS LIST

#### 1. Introduction

- A. The Illustrated Parts List (IPL) contains an illustration and a list of component parts you can repair or replace. The Illustrated Parts Catalog (IPC) shows how to use the Boeing part number system.
- B. This shows how parts are related: The relation of each item to its next higher assembly (NHA) is shown in the NOMENCLATURE column. Use the indenture system that follows:

1	2	3	4	5	6	7
.	Assembly					
.	Attaching parts for assembly					
.	.	Detail parts for assembly				
.	.	Subassembly				
.	.	Attaching parts for subassembly				
.	.	.	Detail parts for subassembly			
.	.	.	Sub-subassembly			
.	.	.	Attaching parts for subassembly			
.	.	.	.	Details parts for sub-subassembly		
						Detail Installation Parts (Included only if installation parts may be sent to the shop as part of assembly)

- C. Each top assembly is given one use code letter (A, B, C, etc.) in the USAGE CODE column. All subsequent component parts in the list can have one or more of the use code letters to show effectivity to top assemblies. A component part without a use code applies to all top assemblies.
- D. An alphabetical letter is added after the item number for optional parts, parts changed by a Service Bulletin, configuration differences (except left-handed and right-handed parts), last engineering releases, and parts added between item numbers in a sequence. The alphabetical letter will not be shown on the illustration for equivalent parts of the same part number.
- E. Color-coded parts are identified with a single digit alpha following the dash number or with "SP" suffix. If the "SP" suffix is used, it represents consolidation of all color codes applicable for a given usage which are not separately listed. Orders for color-coded parts should include the registry number of the airplane for which the parts are ordered.
- F. If a part number is 15 characters long but will not fit in the part number column, the part number will be displayed with a "~" at the end of the line and will be continued on the next line. The "~" denotes that the part number continues on the next line.
- G. Parts changed by a Service Bulletin are shown by PRE SB XXXX and POST SB XXXX added to the NOMENCLATURE column.
- (1) When a new top assembly is added by a Service Bulletin, PRE SB XXXX and POST SB XXXX will be added at the top assembly level only. The configuration differences at the detail part level are shown by use code letters.
- (2) When the top assembly part number is not changed by the Service Bulletin, PRE SB XXXX and POST SB XXXX will be added at the detail level.
- H. Interchangeable Parts

# 57-56-55

ILLUSTRATED PARTS LIST

Page 1001

Nov 01/2008



## COMPONENT MAINTENANCE MANUAL

Optional (OPT)	The part is optional to and interchangeable with other parts that have the same item number.
Replaces, Replaced by and not interchangeable with (REPLACES, REPLACED BY AND NOT INTCHG/W)	The part replaces and is not interchangeable with the initial part.
Replaces, Replaced by (REPLACES, REPLACED BY)	The part replaces and is interchangeable with, or is an alternative to, the initial part.

### VENDOR CODES

Code	Name
15653	ALCOA GLOBAL FASTENERS INC DIV KAYNAR PRODUCTS 800 S STATE COLLEGE BLVD FULLERTON, CALIFORNIA 92831-3001 FORMERLY VK6405 MICRODOT AEROSP LTD; FORMERLY KAYNAR TECH FORMERLY FAIRCHILD FASTENERS KAYNAR DIV
15860	NEW HAMPSHIRE BALL BEARINGS, INC ASTRO DIVISION 155 LEXINGTON AVENUE LACONIA, NEW HAMPSHIRE 03246-2937 FORMERLY ASTRO BEARING CORP, LOS ANGELES, CALIF.
1FF12	CIRCUIT SYSTEMS CO 2621 COLORADO CIR PO BOX 171322 ARLINGTON, TEXAS 76017
1GK47	R AND B ELECTRONICS INC 2374 NW DALLAS STREET GRAND PRAIRIE, TEXAS 75050
50632	KAMATICS CORP SUB OF KAMAN CORP 1335 BLUE HILLS ROAD BLOOMFIELD, CONNECTICUT 06002-1304
62554	SIMMONDS MECAERO FASTENERS INC 1734 SEQUOIA AVENUE ORANGE, CALIFORNIA 92668

# 57-56-55

ILLUSTRATED PARTS LIST

Page 1002

Jul 01/2008



## COMPONENT MAINTENANCE MANUAL

Code	Name
73134	ROLLER BEARING COMPANY OF AMER DBA HEIM BEARINGS DIV 60 ROUND HILL RD FAIRFIELD, CONNECTICUT 06430-0000 FORMERLY INCOM INTL HEIM DIV; HEIM UNIVERSAL CORP INCOM; FORMERLY HEIM DIV INCOM INTL; IMO IND HEIM BEARINGS DIV
81376	SMITH ACQUISITION COMPANY 2240 BUENA VISTA BALDWIN PARK, CALIFORNIA 91706
91812	ESTERLINE MASON 13955 BALVOA ROAD SYLMAR, CALIFORNIA 91342 FORMERLY JANCO CORPORATION
97613	SARGENT CONTROLS & AEROSPACE/KAHR BEARING DIV 5675 W BURLINGAME RD TUCSON, ARIZONA 85743 FORMERLY AETNA STEEL PROD KAHR BEARING DIV V96579 FORMERLY SARGENT IND KAHR BEARING DIV, BURBANK, CALIFORNIA
S0352	NIPPON MINIATURE BEARING CO LTD TOKYO, JAPAN

# 57-56-55

ILLUSTRATED PARTS LIST

Page 1003

Jul 01/2008



## COMPONENT MAINTENANCE MANUAL

### NUMERICAL INDEX

PART NUMBER	AIRLINE PART NUMBER	FIGURE	ITEM	UNITS PER ASSEMBLY
100220-7		1	45	2
113A4111-7		1	150	2
113A4112-13		1	160	1
113A4112-14		1	165	1
113A4112-15		1	170	1
113A4112-16		1	175	1
113A4114-3		1	130	1
113A4150-11		1	105	2
113A4160-11		1	100A	2
113A4160-3		1	100	2
113A4180-1		1	55	1
113A4180-2		1	60	1
113A4180-3		1	75	1
113A4180-4		1	80	1
113A4400-1		1	1A	RF
113A4400-2		1	5	RF
113A4400-3		1	1B	RF
113A4400-4		1	5B	RF
113A4410-1		1	120	1
113A4410-2		1	125	1
113A4410-3		1	135	1
113A4410-4		1	140	1
113A4420-1		1	180	1
113A4420-2		1	185	1
940CW20-7		1	45	2
ADW06V301NC		1	20	2
BAC27NCT0217		1	200	1
BACB10FA06GC		1	20	2
BACB28AP04P014		1	10	2
BACB28AT06B014C		1	15	2
BACB28W3C009		1	70	1
BACB28W5B009		1	65	1
BACB28X12K029		1	25A	2
BACB28X12M029		1	25	2

# 57-56-55

ILLUSTRATED PARTS LIST

Page 1004

Jul 01/2008



## COMPONENT MAINTENANCE MANUAL

PART NUMBER	AIRLINE PART NUMBER	FIGURE	ITEM	UNITS PER ASSEMBLY
BACB30VF08K4		1	85	12
BACJ40AB20-7		1	45	2
BACN10JC08CD		1	95	12
BACN10YR3CD		1	40	2
BACR15BB3D		1	190	2
BACR15BB3D4C		1	190A	2
BACR15CE6D		1	110	4
BACR15FT5D		1	50	2
BACR15FT5D6C		1	50A	2
BACR15FT6D		1	115	8
		1	145	16
BACR15GF6D7		1	110A	4
BACS12GU3K7		1	30	2
BACS40R008B018F		1	155	AR
H52732-3CD		1	40	2
KSC152200BZ06GC		1	20	2
KWDB06-35		1	20	2
MS27253-1		1	195	1
NAS1149D0316J		1	35	6
NAS1149DN832J		1	90	12
PLH53CD		1	40	2
RBEJ40AB20-7		1	45	2
SWKRS06-350SC		1	20	2
WES06FAGC		1	20	2
WHTFA06VC		1	20	2

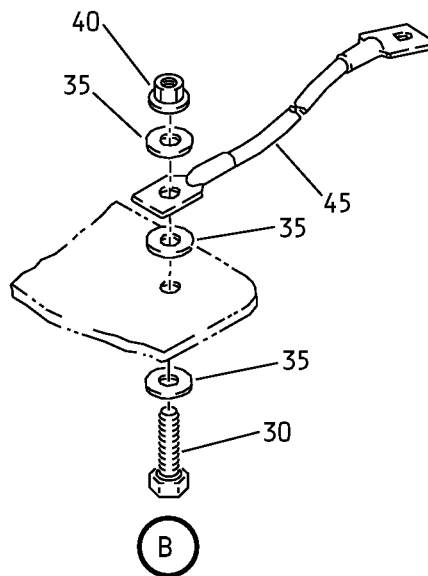
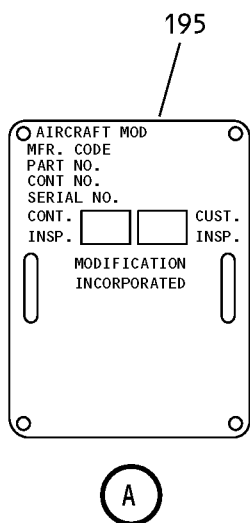
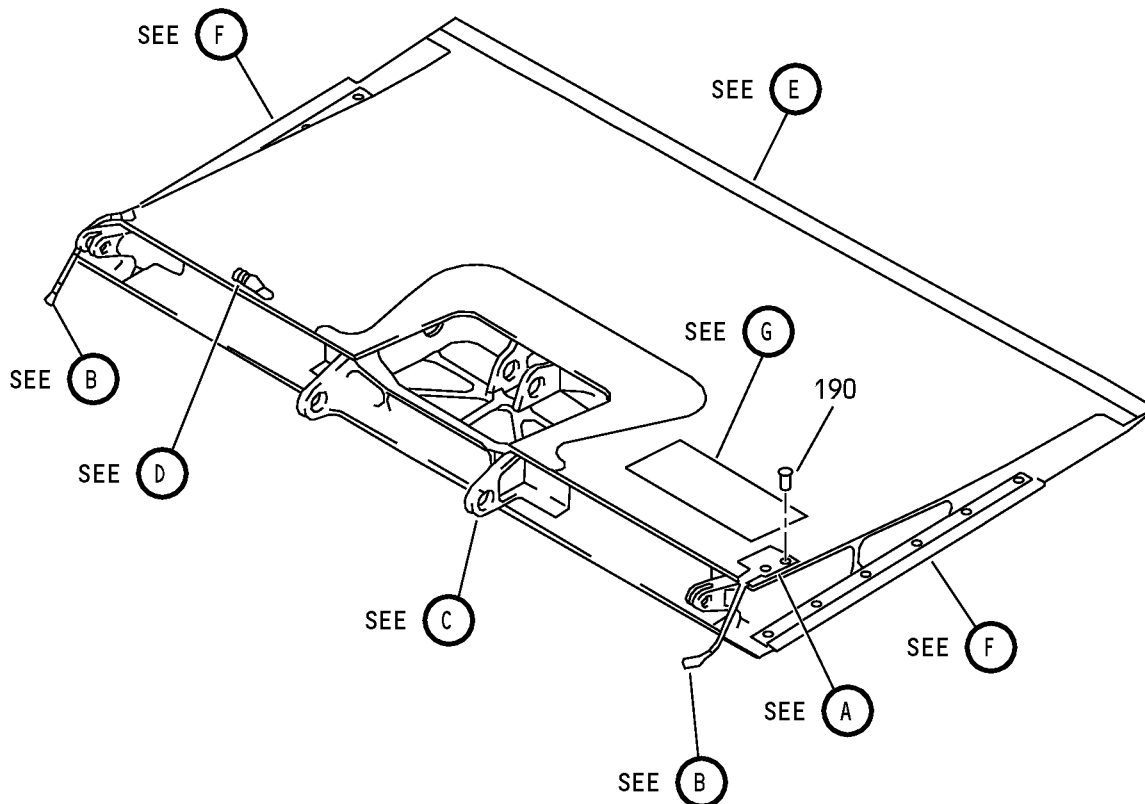
# 57-56-55

ILLUSTRATED PARTS LIST

Page 1005

Jul 01/2008

COMPONENT MAINTENANCE MANUAL



No. 4 and 9 Flight Spoiler Assembly  
IPL Figure 1 (Sheet 1 of 5)

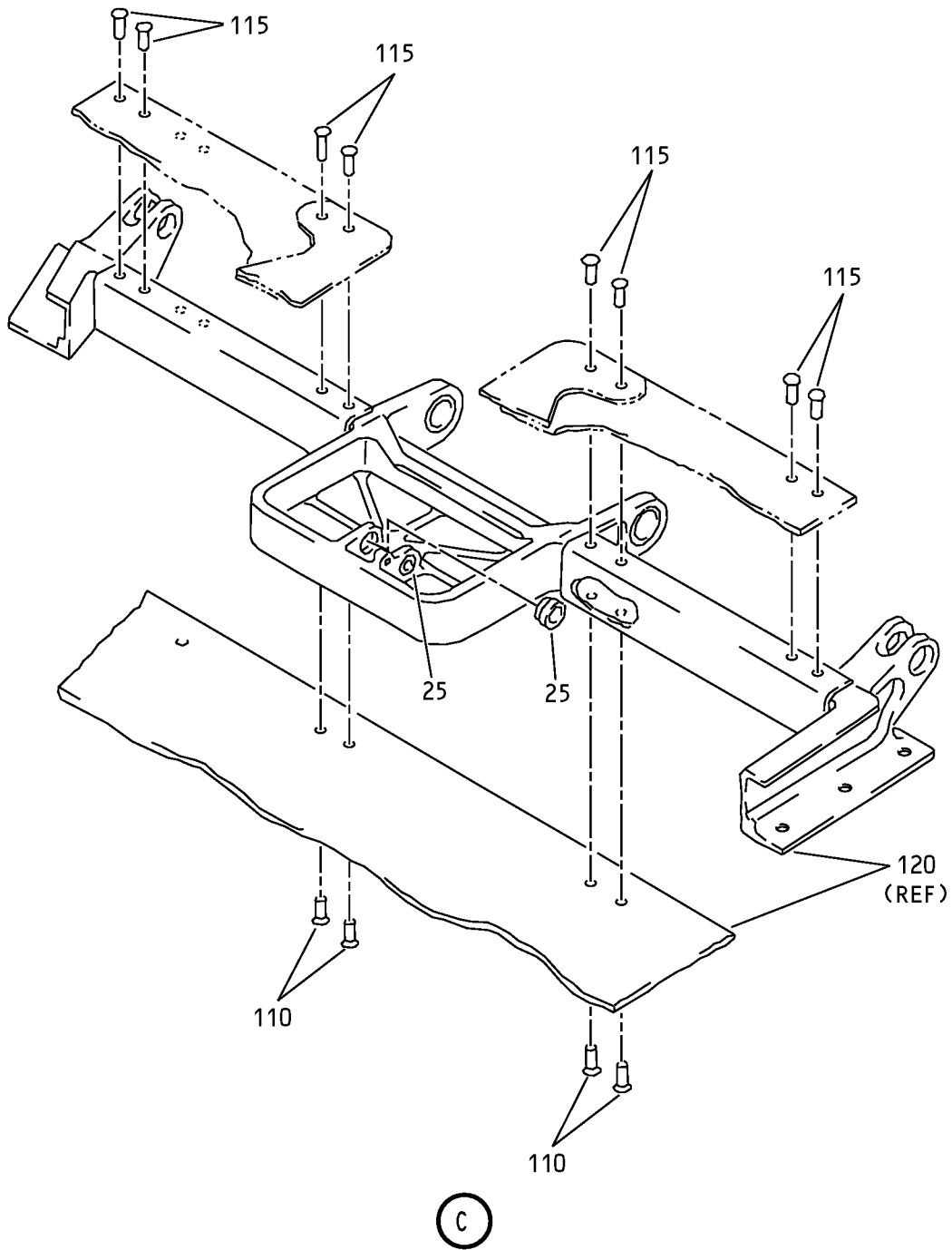
**57-56-55**

ILLUSTRATED PARTS LIST

Page 1006

Mar 01/2006

COMPONENT MAINTENANCE MANUAL

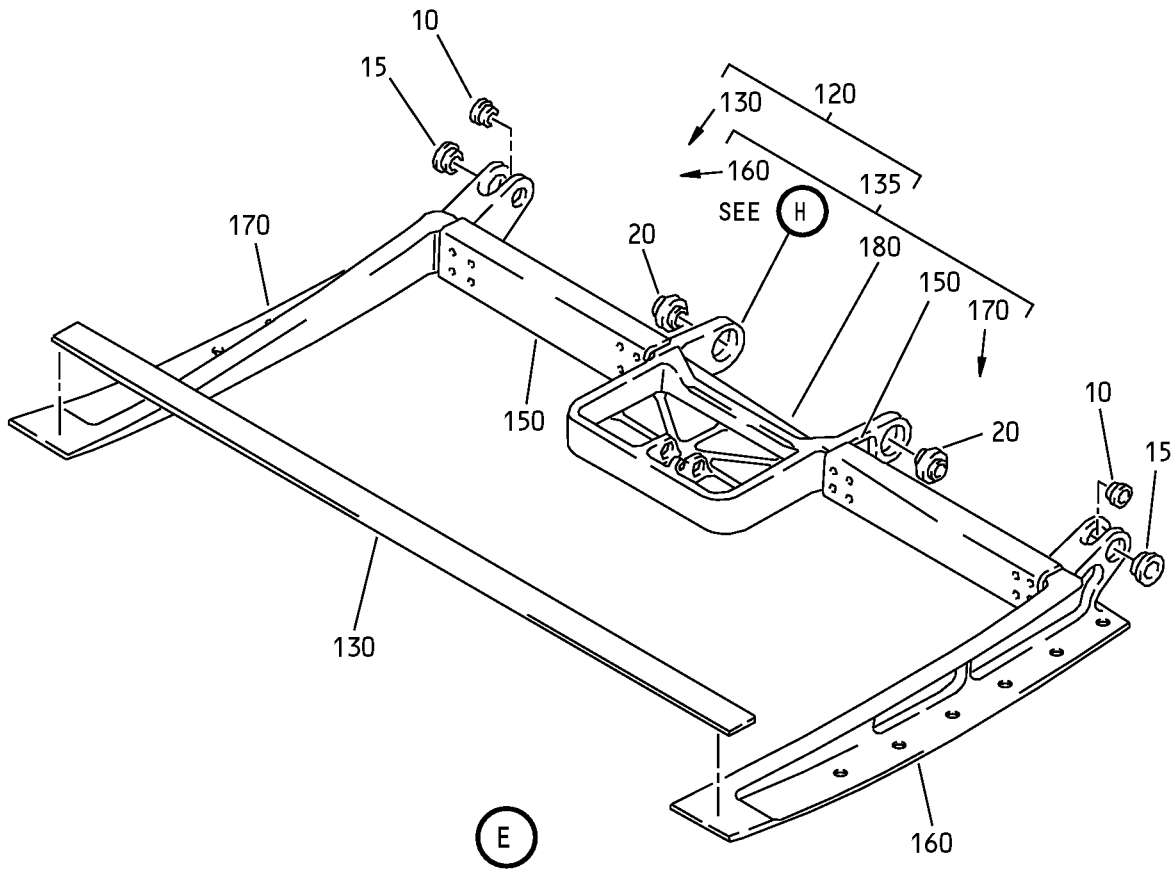
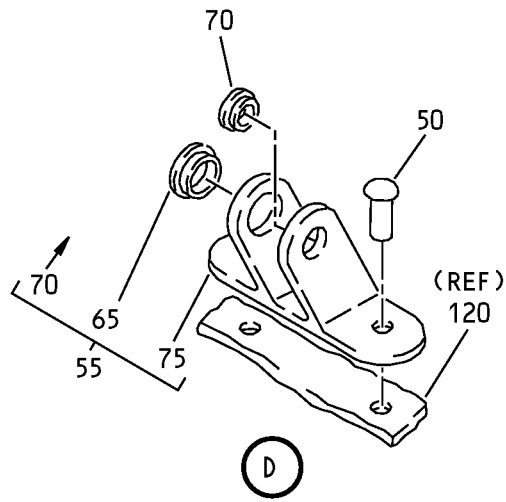


No. 4 and 9 Flight Spoiler Assembly  
IPL Figure 1 (Sheet 2 of 5)

**57-56-55**  
ILLUSTRATED PARTS LIST  
Page 1007  
Mar 01/2006



COMPONENT MAINTENANCE MANUAL



No. 4 and 9 Flight Spoiler Assembly  
IPL Figure 1 (Sheet 3 of 5)

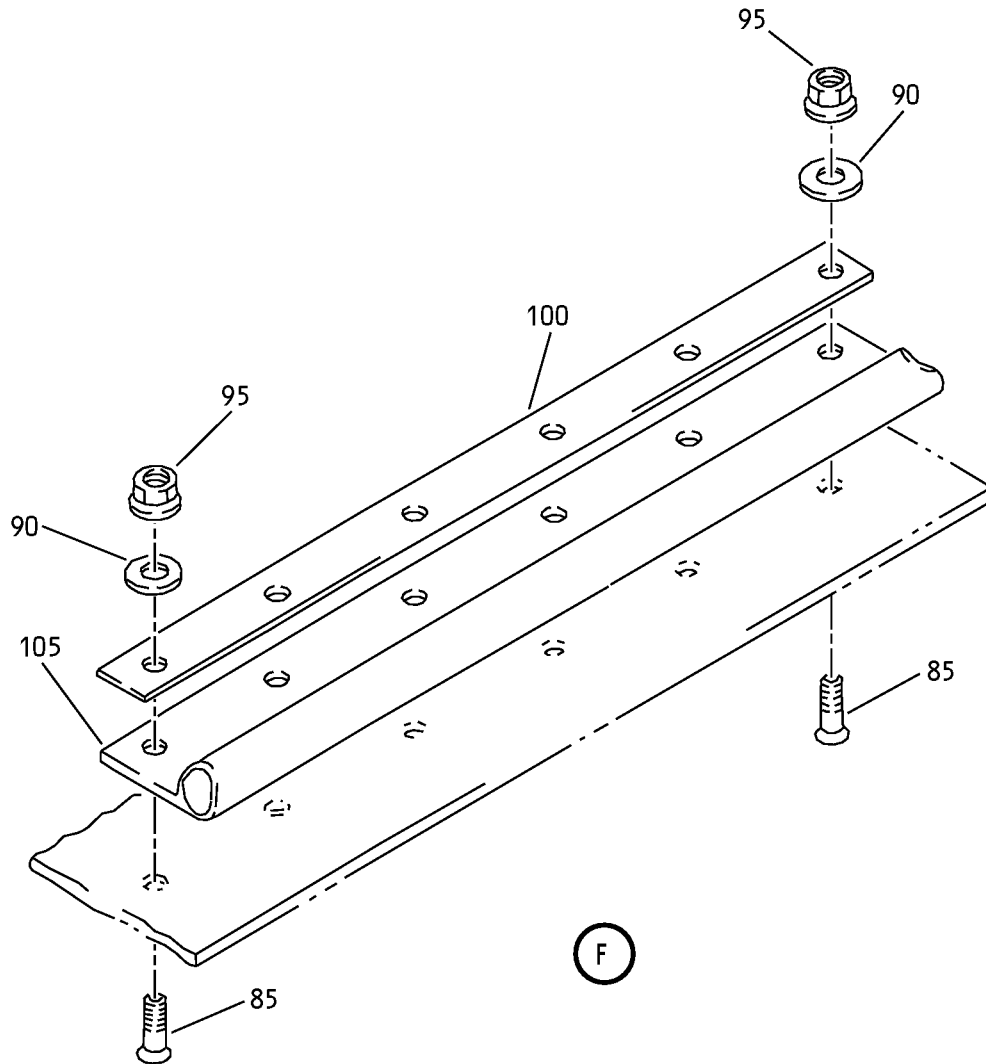
**57-56-55**

ILLUSTRATED PARTS LIST

Page 1008

Mar 01/2006

## COMPONENT MAINTENANCE MANUAL



### WARNING HAZARDOUS-AREA

TO PREVENT AUTOMATIC RETRACTION IF HYDRAULIC PRESSURE IS APPLIED OR IF ELECTRICAL POWER IS LOST, DEACTIVATE SPOILER/SPEEDBRAKE CONTROL SYSTEM PER MAINTENANCE MANUAL SECTION 27-61-00 BEFORE ENTERING AREA TO PERFORM ANY MAINTENANCE OPERATION.

BAC27NCT0217

No. 4 and 9 Flight Spoiler Assembly  
IPL Figure 1 (Sheet 4 of 5)

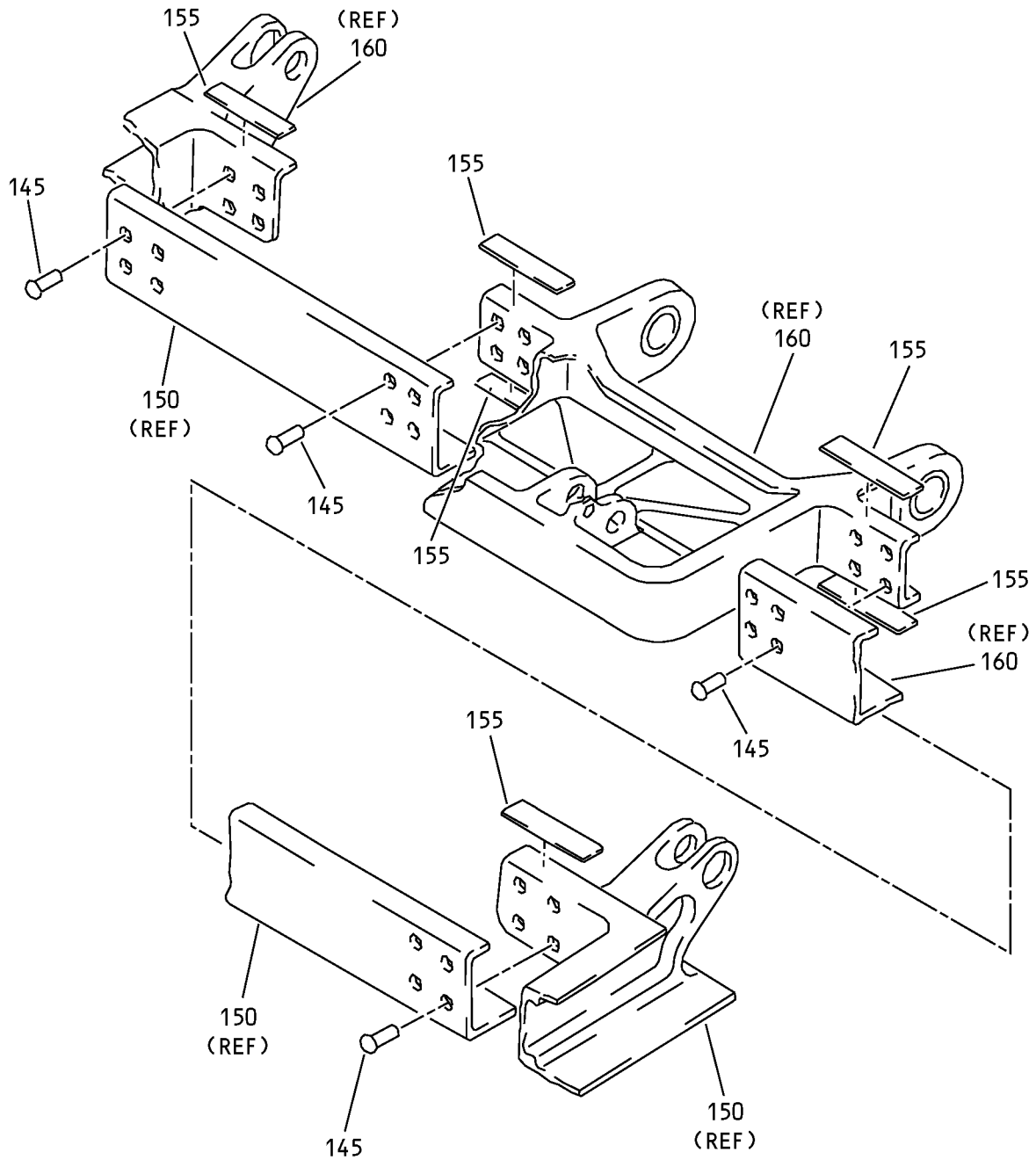
# 57-56-55

ILLUSTRATED PARTS LIST

Page 1009

Mar 01/2006

COMPONENT MAINTENANCE MANUAL



H

No. 4 and 9 Flight Spoiler Assembly  
IPL Figure 1 (Sheet 5 of 5)

**57-56-55**

ILLUSTRATED PARTS LIST

Page 1010

Mar 01/2006



## COMPONENT MAINTENANCE MANUAL

FIG/ ITEM	PART NUMBER	AIRLINE PART NUMBER	NOMENCLATURE							USAGE CODE	UNITS PER ASSY
			1	2	3	4	5	6	7		
1-											
-1A	113A4400-1								SPOILER ASSY-NO. 4 AND NO. 9, FLIGHT	A	RF
-1B	113A4400-3								SPOILER ASSY-NO. 4 AND NO. 9, FLIGHT	C	RF
-5	113A4400-2								SPOILER ASSY-NO. 4 AND NO. 9, FLIGHT	B	RF
-5B	113A4400-4								SPOILER ASSY-NO. 4 AND NO. 9, FLIGHT	D	RF
10	BACB28AP04P014								. BUSHING		2
15	BACB28AT06B014C								. BUSHING		2
20	ADW06V301NC								. BEARING (V15860) (SPEC BACB10FA06GC) (OPT SWKRS06-350SC (V81376)) (OPT KSC152200BZ06GC (V50632)) (OPT KWDB06-35 (V97613)) (OPT WES06FAGC (V73134)) (OPT WHTFA06VC (VS0352))		2
25	BACB28X12M029								. BUSHING	A, B	2
-25A	BACB28X12K029								. BUSHING	C, D	2
30	BACS12GU3K7								. SCREW		2
35	NAS1149D0316J								. WASHER		6
40	H52732-3CD								. NUT (V15653) (SPEC BACN10YR3CD) (OPT PLH53CD (V62554))		2
45	940CW20-7								. JUMPER ASSY (V91812) (SPEC BACJ40AB20-7) (OPT 100220-7 (V1FF12)) (OPT RBEJ40AB20-7 (V1GK47))		2
50	BACR15FT5D								. RIVET (SIZE DETERMINED ON INST)	A, B	2
50A	BACR15FT5D6C								. RIVET	C, D	2
55	113A4180-1								. FITTING ASSY	A, C	1
-60	113A4180-2								. FITTING ASSY	B, D	1
65	BACB28W5B009								. . BUSHING		1
70	BACB28W3C009								. . BUSHING		1
75	113A4180-3								. . FITTING	A, C	1
-80	113A4180-4								. . FITTING	B, D	1

-Item not illustrated

# 57-56-55

ILLUSTRATED PARTS LIST

Page 1011

Nov 01/2008



## COMPONENT MAINTENANCE MANUAL

FIG/ ITEM	PART NUMBER	AIRLINE PART NUMBER	NOMENCLATURE							USAGE CODE	UNITS PER ASSY														
			1	2	3	4	5	6	7																
1-																									
85	BACB30VF08K4		.	B	O	L	T				12														
90	NAS1149DN832J		.	W	A	S	H	E	R		12														
95	BACN10JC08CD		.	N	U	T					12														
100	113A4160-3		.	R	E	T	A	I	N	E	R	A	B	2											
-100A	113A4160-11		.	R	E	T	A	I	N	E	R	A	D	2											
105	113A4150-11		.	S	E	A	L				2														
				(	M	A	K	E	F	R	O	M	S	E	C	T	R	U	B	B	E	R			
				F	A	B	R	I	C	C	O	V	E	R	E	D	P	E	R	B	M	S	1	-	5
				A	L	T	E	R	B	A	C	1	5	3	0	-	3	X	1	6	.	1	)		
110	BACR15CE6D		.	R	I	V	E	T			A	B	4												
				(	S	I	Z	E	D	E	T	E	R	M	I	N	E	D	O	N	I	N	S	T	)
-110A	BACR15GF6D7		.	R	I	V	E	T			C	D	4												
115	BACR15FT6D		.	R	I	V	E	T				8													
				(	S	I	Z	E	D	E	R	M	I	N	E	D	O	N	I	N	S	T	)		
120	113A4410-1		.	B	O	N	D	A	S	S	E	M	B	L	E	T		A	C	1					
-125	113A4410-2		.	B	O	N	D	A	S	S	E	M	B	L	E	T		B	D	1					
130	113A4114-3		.	.	S	T	R	I	P	-	R	U	B	1											
135	113A4410-3		.	.	F	R	A	M	E	A	S	S	E	A	C	1									
-140	113A4410-4		.	.	F	R	A	M	E	A	S	S	E	B	D	1									
145	BACR15FT6D		.	.	.	R	I	V	E	T		16													
				(	S	I	Z	E	D	E	R	M	I	N	E	D	O	N	I	N	S	T	)		
150	113A4111-7		.	.	.	C	H	A	N	N	E	L	2												
155	BACS40R008B018F		.	.	.	S	H	I	M			AR													
160	113A4112-13		.	.	.	R	I	B	-	E	N	D	A	B	1										
-165	113A4112-14		.	.	.	R	I	B	-	E	N	D	B	D	1										
170	113A4112-15		.	.	.	R	I	B	-	E	N	D	A	C	1										
-175	113A4112-16		.	.	.	R	I	B	-	E	N	D	B	D	1										
180	113A4420-1		.	.	.	F	I	T	T	I	N	G	-	C	T	R	A	C	1						
-185	113A4420-2		.	.	.	F	I	T	T	I	N	G	-	C	T	R	B	C	1						
190	BACR15BB3D		.	R	I	V	E	T			A	B	2												
				(	S	I	Z	E	D	E	R	M	I	N	E	D	O	N	I	N	S	T	)		
-190A	BACR15BB3D4C		.	R	I	V	E	T			C	D	2												
195	MS27253-1		.	P	L	A	T	E	-	I	D	E	N	T	1										
200	BAC27NCT0217		.	M	A	R	K	E	R	-	A	L	U	M	I	N	I	U	M	F	O	I	L	1	

-Item not Illustrated

# 57-56-55

ILLUSTRATED PARTS LIST

Page 1012

Nov 01/2008