

**BOEING**   
**COMMERCIAL JET**  
**OVERHAUL MANUAL**

TO: ALL HOLDERS OF PASSENGER SERVICE UNIT ASSEMBLY OVERHAUL MANUAL,  
 25-20-05

REVISION NO. 3, DATED JAN 5/81

HIGHLIGHTS

DESCRIPTION OF CHANGE	TOPICS AFFECTED												
	D & O	D/Assy	Cleaning	Insp/Chk	Repair	Assy	F/C	Test	T/Shooting	S/Tools	Storage	IPL	L/Overhaul
Changed LEP to reflect date of Jul 5/77 for page 702													

**BOEING**   
**COMMERCIAL JET**  
**OVERHAUL MANUAL**

# PASSENGER SERVICE UNIT ASSEMBLY

## 25-20-05

BOEING P/N 65-45260-101 thru -106, -117 thru -120, -123, -124, -129 thru  
 -132, -141 thru -150, -153, -154, -157 thru -162,  
 -165 thru -202

AIRLINE P/N

THE FOLLOWING DIRECTIVES APPLY TO THIS SUBJECT:

BOEING SERVICE BULLETIN	BOEING TEMPORARY REVISION	OTHER DIRECTIVES	DATE DIRECTIVE INCORPORATED INTO TEXT
25-1003		PRR 30691 PRR 30860 PRR 31366 PRR 31634-1 PRR 31805-1 PRR 31827 PRR 32077 PRR 32097-1	Nov 10/69 Nov 10/69 Nov 10/69 Nov 10/69 Mar 25/73 Mar 25/73 Mar 25/73 Mar 25/73

**BOEING**   
**COMMERCIAL JET**  
**OVERHAUL MANUAL**

LIST OF EFFECTIVE PAGES					
* Indicates pages revised, added or deleted in latest revision					
F Indicates foldout pages - print one side only					
PAGE	DATE	PAGE	DATE	PAGE	DATE
25-20-05		1109	Mar 25/73		
T-1	Mar 25/73	1110	Mar 25/73		
T-2	BLANK	1111	Mar 25/73		
* LEP-1	Jan 5/81	1112	Mar 25/73		
LEP-2	BLANK	1113	Mar 25/73		
T/C-1	Mar 25/73	1114	Mar 25/73		
T/C-2	BLANK	1115	Mar 25/73		
1	Mar 25/73	1116	Mar 25/73		
2	Mar 25/73	1117	Mar 25/73		
101	Mar 25/73	1118	Mar 25/73		
102	Mar 25/73	1119	Mar 25/73		
103	Mar 25/73	1120	Mar 25/73		
104	Mar 25/73	1121	Mar 25/73		
201	Mar 25/73	1122	Mar 25/73		
202	BLANK	1123	Mar 25/73		
301	Nov 10/69	1124	Mar 25/73		
302	BLANK	1125	Mar 25/73		
401	Dec 25/75	1126	Mar 25/73		
402	Dec 25/75	1127	Mar 25/73		
403	Dec 25/75	1128	BLANK		
404	BLANK				
501	Mar 25/73				
502	Mar 25/73				
503	Mar 25/73				
504	BLANK				
701	Mar 25/73				
702	Jul 5/77				
801	Nov 10/69				
802	Nov 10/69				
803	Mar 25/73				
804	BLANK				
901	Mar 25/73				
902	BLANK				
1001	Nov 10/69				
1002	BLANK				
1101	Mar 25/73				
1102	Nov 15/67				
1103	Nov 10/69				
1104	Nov 10/69				
1105	Nov 15/67				
1106	Nov 10/69				
1107	Mar 25/73				
1108	Mar 25/73				

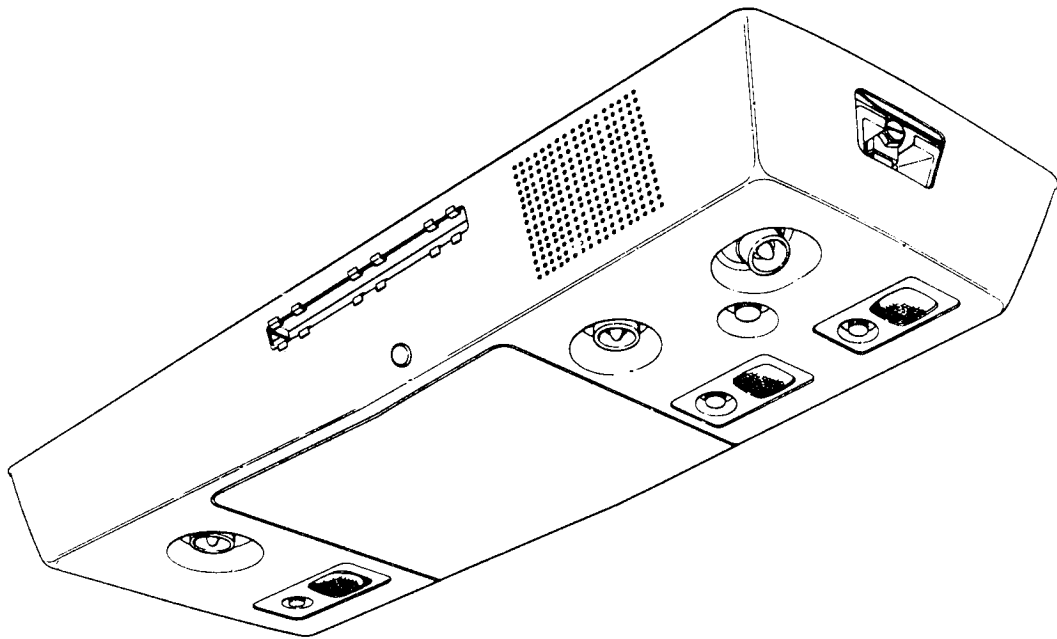
**BOEING**   
**COMMERCIAL JET**  
**OVERHAUL MANUAL**

TABLE OF CONTENTS

<u>Paragraph Title</u>	<u>Page</u>
Description and Operation . . . . .	1
Disassembly . . . . .	101
Cleaning . . . . .	201
Inspection/Check . . . . .	301
Repair . . . . .	401
Assembly . . . . .	501
Fits and Clearances . . . . .	None
Testing . . . . .	701
Trouble Shooting . . . . .	801
Storage Instructions . . . . .	901
Special Tools, Fixtures, and Equipment . . . . .	1001
Illustrated Parts List . . . . .	1101

**BOEING**   
**COMMERCIAL JET**  
**OVERHAUL MANUAL**

PASSENGER SERVICE UNIT ASSEMBLY



Passenger Service Unit Assembly  
Figure 1

DESCRIPTION AND OPERATION

1. Description

- A. The passenger service unit assembly, located on the underside of the hatrack, provides emergency oxygen, individual air, reading lights, attendant call button and call light for the seated passenger. It also provides seat row number identification. The various system controls

**BOEING**   
**COMMERCIAL JET**  
**OVERHAUL MANUAL**

65-45260

are mounted on a lower frame that is hinged on the outboard end to an upper frame and held by a manual latch on the inboard end. The interior of the unit is accessible by disconnecting the inboard latch allowing the lower frame and cover shell to swing downward. A passenger address loudspeaker is also included on some assemblies.

2. Operation

- A. The passenger service unit oxygen system includes a pressure-operated latch that opens the shell door when the system is pressurized. The door may also be manually opened by the attendant. The lighting system includes reading lights with individual switches, attendant call switch and illuminated "No Smoking - Fasten Seat Belt" warning sign fixture. The fresh air system includes tubing, air ducts, and individual adjustable outlets.

3. Leading Particulars

Width -- 11 inches (approximately)  
Length -- 26 inches (approximately)  
Height -- 5 inches (approximately)  
Weight -- 10 pounds (approximately)

**BOEING**   
**COMMERCIAL JET**  
**OVERHAUL MANUAL**

DISASSEMBLY

WARNING: THE PASSENGER SERVICE UNIT ASSEMBLY CONTAINS OXYGEN EQUIPMENT WHICH MUST BE OVERHAULED IN A CLEAN, ENCLOSED AREA. SPECIAL CARE MUST BE TAKEN TO ENSURE ALL OPENINGS ARE CAPPED AT ALL TIMES, AS INDICATED, AND THAT THE UNIT IS NOT LEFT UNCOVERED OR UNPROTECTED.

CAUTION: LOWER FACE OF THE SHELL ASSEMBLY AND OXYGEN MASK BOX DOOR IS VISIBLE FROM CABIN INTERIOR. TAKE SPECIAL CARE TO PROTECT THIS AREA FROM SCRATCHES DURING OVERHAUL BY WORKING ON A SUITABLE LINT-FREE CLOTH SURFACE.

1. General

- A. Disassemble only as necessary for cleaning, inspection, repair, and replacement of components.
- B. Unsolder wiring connections and remove connector pins only when replacement of wire or component is required. Tag disconnected wires to facilitate reassembly. Refer to 20-12-01 for unsoldering procedures.

CAUTION: USE CARE WHEN HANDLING WIRING CONNECTIONS.

2. Disassembly (See figure 1101.)

- A. Loosen screw on link lock (111) located at inboard end of unit to release link lock assembly (108) and raise upper frame (118).
- B. Depress spring-loaded lamp fixture (1 or 1A) and remove from unit.

NOTE: Do not remove angle stiffener (3) unless repair or replacement is necessary.

- C. Remove friction-held plug button (4).
- D. Remove nuts (5), screws (6), and heat shield (7).
- E. Loosen clamp assembly (8) and remove flexible gasper air hose (9).
- F. Remove nuts (10), washers (11), and screws (12) securing lanyard assembly (13) and hose clamping plate (18).

NOTE: Do not disassemble lanyard assembly (13) unless repair or replacement is necessary.

- G. Lift off oxygen hose clamping plate (18) and washers (19).
- H. Remove plastic straps (20) and bellows (21) from gasper air manifold (30).

**BOEING**   
**COMMERCIAL JET**  
**OVERHAUL MANUAL**

65-45260

- J. Remove split-plastic grommets (22), nuts (23 and 24), washers (25), and screws (26 and 27).
- K. Remove service line support bracket (123) and washers (28).
- L. Disconnect flexible oxygen hose assembly (29) from latch-valve-manifold assembly (58) and remove flexible oxygen hose assembly (29) and gasper air manifold (30).

**WARNING:** DO NOT ALLOW OIL, GREASE, FLAMMABLE SOLVENTS, DUST, LINT, FINE METAL FILINGS, OR OTHER COMBUSTIBLE MATERIAL TO COME IN CONTACT WITH PARTS THAT WILL BE EXPOSED TO PRESSURIZED OXYGEN. COMBUSTIBLE MATERIALS MAY IGNITE AND RESULT IN AN EXPLOSION WHEN EXPOSED TO OXYGEN UNDER PRESSURE.

- M. Remove screws (31 and 32), washers (33 and 34), clamps (35), and spacer (36).
- N. Disconnect all electrical leads and remove wire bundle (37).

**NOTE:** Do not remove connector (37A) unless replacement is necessary.

- P. Remove reading light assemblies (39) as follows:

- (1) Remove screws (38), ring (38A), and reading lights.
- (2) Remove nut, bezel retaining clip, and escutcheon plate from switch.

**NOTE:** Refer to applicable manufacturer's overhaul instructions for reading light assemblies (39).

- Q. Remove attendant call switch (40) by disassembling plastic knob, bezel plate, and switch.

- R. Remove screws (41 and 42), washers (43), speaker (44), and transformer (45), if applicable.

**CAUTION:** HANDLE SPEAKER (44) CAREFULLY TO AVOID DAMAGING SPEAKER CONE.

- S. Remove screw (46), washer (47), spacer (48), clamp (49), nut (50) and air ducts (51 and 52).

- T. Remove long tube cap (53) and disassemble cold air outlets (54 and 55) by unscrewing upper half (cap) from lower half (valve) and removing from shell assembly (60).

- U. Remove screws (56), washers (57), and latch-valve-manifold assembly (58).

**NOTE:** Refer to applicable manufacturer's overhaul instructions for latch-valve-manifold assembly (58).

Do not remove vinyl cal (59) unless replacement is necessary.



**BOEING**   
**COMMERCIAL JET**  
**OVERHAUL MANUAL**

V. Disassemble shell assembly (60) as follows:

- (1) Remove cotter pins (61), washers (62), flathead pins (63), and oxygen box door (64).
- (2) Remove nuts (65), washer (66), screws (67), and lower pan angle attachments (68 and 69).
- (3) Remove nuts (72), screws (73), and speaker retainer clips (74), if applicable.

NOTE: Do not remove speaker mounts (70) or inserts (71) unless repair or replacement is necessary.

Do not remove velcro tape (76) unless replacement is necessary.

W. Remove nuts (77), washers (78 and 79), screws (80 and 81), and remove frame assembly (82) from shell (75).

X. Remove screws (83), nuts (84), and withdraw hinge pin (85) separating structural hinges (86 and 87).

Y. Remove nuts (88), washers (88A), screws (89), and outboard track attach latch assembly (90).

NOTE: Do not disassemble latch assembly (90) unless repair or replacement is necessary.

Z. Disassemble latch assembly (95) as follows:

- (1) Remove screw (96), washer (97), nut (98), washer (99), and screw (100).
- (2) Remove cotter pin (101), pin (102), hooks (103 and 104), and spring (105).

AA. Remove screws (106), washers (107), terminal (133), and link lock assembly (108).

NOTE: Do not disassemble link lock assembly (108) or parts (113 through 122) unless repair or replacement is necessary.

**BOEING**   
**COMMERCIAL JET**  
**OVERHAUL MANUAL**

65-45260

AB. Remove nuts (124), washers (125), terminal (134), screws (126), latch keeper plate (127), filler plate (128), and light housing assembly (129).

NOTE: Do not disassemble lanyard assembly (130) or remove centering post (136) unless repair or replacement is necessary.

AC. Remove screws (137) and electrical terminal block assembly (138).

AD. Remove screws (139) and transformer support bracket assembly (140), if applicable.

AE. Remove flip grommet (143) from frame assembly (82).

NOTE: Do not remove marker (144) or nuts (145 and 146) from lower pan (147) unless repair or replacement is necessary.

**BOEING**   
**COMMERCIAL JET**  
**OVERHAUL MANUAL**

CLEANING

WARNING: DO NOT ALLOW OIL, GREASE, FLAMMABLE SOLVENTS, DUST, LINT, FINE METAL FILINGS OR OTHER COMBUSTIBLE MATERIAL TO CONTAMINATE PARTS THAT WILL BE EXPOSED TO PRESSURIZED OXYGEN. COMBUSTIBLE MATERIAL CAN IGNITE AND RESULT IN AN EXPLOSION WHEN EXPOSED TO PRESSURIZED OXYGEN.

1. General

- A. Clean all metallic parts, except oxygen system components, with solvent, P-D-680, or equivalent.
- B. Clean all oxygen system components per 20-30-03, General Cleaning Procedures.
- C. Clean all plastic parts per Cleaning of Interior Painted or Plastic Surfaces in 20-30-03.
- D. Wipe electric contacts with aliphatic naphtha or isopropyl alcohol and dry thoroughly with a clean, lint-free cloth. Do not allow contacts to air dry.
- E. For cleaning information related to soldering, refer to 20-12-01, Preparation for Soldering.

2. Materials

NOTE: Use listed materials or equivalent substitutes.

A. Solvents

- (1) Dry Cleaning Solvent -- P-D-680
- (2) Aliphatic Naphtha -- TT-N-95
- (3) Isopropyl Alcohol -- TT-I-735 Grade A Technical

- B. Detergents for nonmetallic parts. Refer to 20-30-03.

**BOEING**   
**COMMERCIAL JET**  
**OVERHAUL MANUAL**

INSPECTION/CHECK

1. Visual Checks (See figure 1101.)

- A. Examine all metal parts for pits, scratches, cracks, corrosion, and damage using strong light and a minimum of 10-power magnification.
- B. Examine all threaded parts for cross-threading or stripping.
- C. Examine all nonmetallic parts for cracks, cuts, and excessive warping.
- D. Examine lanyard assemblies (13 and 130) for damaged cords.
- E. Examine oxygen hose (29) by visually checking each coupling nut and sleeve for damage and surface imperfections. Check that hose is clean, dry, and free from oil, grease, or other contaminants.
- F. Examine speaker (44) for damage to speaker cone.
- G. Check components not removed for damage and security of mounting.
- H. Check wire for damage.

NOTE: Visual examination of wiring, electrical components, and solder connections shall be accomplished with a minimum of 5-power magnification unless otherwise specified.

- J. Check connectors for bent, corroded, or cracked pins.

2. Special Checks

- A. Check vendor components per manufacturer's instructions.

**BOEING**   
**COMMERCIAL JET**  
**OVERHAUL MANUAL**

REPAIR

1. Repair (Fig. 1101)

- A. Remove corrosion and minor defects by polishing lightly with abrasive cloth, 220-grit or finer. Refinish polished area as necessary for appearance and protection against corrosion.
- B. Repair minor defects in threaded areas with triangular file or thread chaser.
- C. Repair minor cracking in shell assembly (60) and nonmetallic components per standard plastic repair procedures.
- D. Instructions for repair of electrical connectors (plugs, receptacles, sockets, and wire terminations) are contained in 20-11-02, Repair of Electrical Connectors.
- E. Instructions for repair of soldered connections at terminals or solder cups are contained in 20-12-01, Soldering Electrical Connections.
- F. Instructions for repair of wire terminations at terminal lugs and preparation of electrical bonding areas are contained in 20-11-03, Repair of Electrical Terminations.

2. Refinish (Fig. 1101)

CAUTION: DO NOT PERMIT WET HI-SPEED LACQUER TO CONTACT POLYCARBONATE PLASTIC PARTS. IT WILL CAUSE INSTANT DETERIORATION THAT MAY NOT BE DETECTABLE VISUALLY. REFINISH POLYCARBONATE PARTS WITH F-14.941-XXX OR F-22.05-XXX ONLY.

NOTE: Refer to 20-30-02 for stripping of protective finishes and to 20-41-01 for explanation of F and SRF finish codes.

- A. Angle (3) -- Alodize or chromic acid anodize (Ref 20-43-01) and apply one coat BMS 10-11, type 1 primer (SRF-2.30) all over. Material: Al Alloy.
- B. Pin (14) -- Cadmium plate per 20-42-05, type 2, class 2 (F-1.20) all over. Material: Steel, AMS 1095, heat-treated to C40-C45.
- C. Angle attachment (68, 69) and spring clip (114) -- Alodize or chromic acid anodize (Ref 20-43-01) and apply one coat BMS 10-11, type 1 primer (SRF-2.30) all over. For final finish apply two coats hi-speed flat black lacquer (F-14.97) all over. Material: Al Alloy.

**BOEING**   
**COMMERCIAL JET**  
**OVERHAUL MANUAL**

65-45260

- D. Frame assembly (82) -- Apply two coats hi-speed flat black lacquer (F-14.97) on all interior metal surfaces except screw threads. Individual parts may be refinished separately.
  - E. Hinges (86, 87), frame (118, 119), strap (122) and pan (147) -- Alodize (colored film) or chromic acid anodize (Ref 20-43-01) (F-2.22) all over. Material: Al Alloy.
  - F. Plate (112) and brackets (123, 142) -- Apply two coats hi-speed flat black lacquer (F-14.97) all over. Material: Al Alloy.
  - G. Bracket (116) -- Alodize (colored film) or chromic acid anodize (Ref 20-43-01) (F-2.22) all over. Material: Aluminum alloy. After finishing, rubber stamp HOOK LANYARD with white, 1/8-inch letters.
  - H. Bracket (120) -- Alodize (colored film) (F-2.21) all over. Material: Al Alloy.
  - I. Filler plate (128) -- Chromic acid dip or chromic acid anodize (Ref 20-43-01) and apply one coat BMS 10-11, type 1 primer (F-2.115) all over. Material: Al Alloy.
  - J. Hook assembly (132, 69-55039-1) -- Apply one coat BMS 10-11, type 1 primer (SRF-12.205) all over.
3. Replacement (Fig. 1101)
- A. Replace cotter pins (61, 101) at each overhaul.
  - B. Replace defective grommets (22, 143) per 20-50-09.
  - C. If replacement is required, following parts may be locally fabricated from indicated materials:
    - (1) Plug (4) -- BACP20B43. Apply applicable decorative finish.
    - (2) Sleeve (16) -- MIL-I-7444, type I, class 1, 0.095 inch ID extruded vinyl, 12.5 inches long.
    - (3) Cord (17) -- Size 18 nylon seine twine 14.0 inches long.
    - (4) Tape (76) -- Velcro V12-2-75, 9.00 inches long (Hartwell Corporation, 9035 Venice Boulevard, Los Angeles, California 90034).
    - (5) Hinge (86) -- MS20001H2-740.

**BOEING**   
**COMMERCIAL JET**  
**OVERHAUL MANUAL**

(6) Hinge (87) -- MS20001H4-740.

(7) Nylon cord (131) -- MIL-C-5040B, type III, 32.0 inches long on 66-10729-1, and 25.0 inches long on 69-55038-2.

- I
- D. Replace defective marker (59) per 20-50-05.
  - E. Replace velcro tape (76), if necessary. Bond with type 63 adhesive per 20-50-12, Application of Adhesives.  
  
(1) thru (6) deleted.
  - F. Replace marker (144), if necessary, per 20-50-05.
  - G. Replace all defective lamps in reading light assemblies (39) and light housing assembly (129).
  - H. Replace damaged wiring in wire bundle (37) with BMS 13-13, type 1, class 1, size AWG 20, unless otherwise noted per schematic diagram (Fig. 801).
  - I. Replace any parts damaged beyond simple repair or refinish.

**BOEING**   
**COMMERCIAL JET**  
**OVERHAUL MANUAL**

ASSEMBLY

1. Insert flip grommet (143, figure 1101) in lower pan (147).
2. Attach transformer support bracket assembly (140) with screws (139), if applicable.
3. Attach electrical terminal block assembly (138) to lower pan with screws (137).
4. Align light housing assembly (129), filler plate (128), latch keeper plate (127), and terminal (134). Use filler plate (128) if and as required to adjust latch keeper plate (127). Secure parts with nut (124), washer (125), and screw (126).
5. Align terminal (133) and link lock assembly (108). Secure with screws (106) and washers (107).
6. Install latch assembly (95) as follows:
  - A. Position spring (105) between hooks (103 and 104), insert pin (102), and secure with cotter pin (101).
  - B. Secure parts (101 through 105) to bracket assembly (115) with screws (96 and 100), washers (97 and 99), and nuts (98).
7. Attach outboard track attach latch assembly (90) with screws (89), washers (88A), and nuts (88).

NOTE: End of screw (91) should be staked to prevent accidental disengagement.
8. Join structural hinges (86 and 87) and insert hinge pin (85).
9. Attach structural hinge (87) to lower pan (147) with screws (83) and nuts (84).
10. Install lower pan attachment angles (68 and 69) to shell (75) with screws (67), washers (66), and nuts (65).
11. Place frame assembly (82) in shell (75) and secure with nuts (77), washers (78 and 79), and screws (80 and 81).



**BOEING**   
**COMMERCIAL JET**  
**OVERHAUL MANUAL**

65-45260

12. Fasten speaker retainer clips (74) to speaker mount (70) with screws (73) and nuts (72), if applicable.
13. Position oxygen box door (64) in shell (75) and secure with pin (63), washer (62) and cotter pin (61).
14. Align latch-valve-manifold assembly (58) and washers (57). Adjust manifold so that hooks on oxygen box door (64) and hooks on manifold are fully engaged when door is closed. In closed position, door must be flush with exterior of cover and closed securely with no evidence of movement. Secure latch-valve-manifold assembly (58) with screws (56).
15. Screw cold air outlets (54 and 55) halves together and install long tube cap (53).
16. Install air ducts (51 and 52) and secure duct (51) with screw (46), washer (47), spacer (48), clamp (49), and nut (50).
17. Align transformer (45) and speaker (44) with screws (41 and 42), and washers (43), if applicable.

CAUTION: HANDLE SPEAKER (44) CAREFULLY TO AVOID DAMAGING SPEAKER CONE.

18. Install attendant call switch (40) as follows:
  - A. Remove plastic knob and bezel plate.
  - B. Install switch from top through pan and cover with locknut backed off completely.
  - C. Install bezel plate on switch and tighten.
  - D. Tighten locknut and install knob.
19. Install reading light assemblies (39) as follows:
  - A. Install escutcheon plate switch and bezel retaining clip and secure with nut on switch.
  - B. Install reading lights, rings (38A), and screws (38).
20. Install wire bundle (37), spacer (36), clamps (35), washers (33 and 34), and screws (31 and 32).

**BOEING**   
**COMMERCIAL JET**  
**OVERHAUL MANUAL**

21. Connect all electrical wires per schematic diagram.
22. Connect flexible oxygen hose (29) as follows:
  - A. Apply MIL-T-5542 thread compound sparingly and evenly to male threads of latch valve manifold assembly (58) immediately prior to installation.
  - B. Connect flexible oxygen hose (29) to latch-valve manifold fitting.
  - C. Tighten nut on oxygen hose until a distinct increase in torque occurs. Tighten an additional 1/6 to 1/3 turn maximum (one to two hex flats).
23. Place gasper air manifold (30) in position to be installed. Install bellows (21) and tighten plastic straps (20).
24. Place support bracket (123), wire bundle (37), and flexible oxygen hose (29) in proper positions and install split plastic grommets (22).

**CAUTION:** DO NOT ALLOW FLEXIBLE OXYGEN HOSE (29) TO BECOME TWISTED.
25. Secure service line support bracket (123) and gasper air manifold (30) with washers (28), screws (26 and 27), washers (25), and nuts (23 and 24).

**NOTE:** Wire bundle (37) must be positioned so that free end is 2-.0 inches from service line support bracket (123).
26. Place flexible oxygen hose (29) in channel on gasper air manifold (30) and install hose clamping plate (18), washers (19, if and as required to prevent preloading oxygen hose), terminal lug (15), and secure with screws (12), washers (11), and nuts (10).

**NOTE:** Flexible oxygen hose (29) must be positioned so that free end is 18.9 inches from gasper air manifold (30).
27. Secure gasper air hose (9) with clamp (8).
28. Install heat shield (7) with screws (6) and nuts (5).

**NOTE:** Do not install friction-held button plug (4) until testing of completed unit has been accomplished.
29. Install lamp fixture (1 or 1A) as follows:
  - A. Insert lower hook over bottom edge of opening.
  - B. Depress spring-loaded fixture allowing upper hooks to pass through opening and release fixture.
30. Lower upper frame and latch link lock (111).

**BOEING**   
**COMMERCIAL JET**  
**OVERHAUL MANUAL**

TESTING

1. Test Equipment

- A. Electrical test stand capable of supplying 28 volts dc
- B. Variable Frequency Audio Source: HP205AG (Hewlett-Packard) or equivalent
- C. Audio Power Meter: GR583-A (General Radio) or equivalent.
- D. Mating Connector: 67-906 (Amphenol Company) with pigtail leads as required
- E. Pneumatic test stand capable of supplying air at a pressure of 20.0 inches of water and capable of measuring a flow rate of from 0.10 to 3.2 cubic feet per minute

2. Preparation for Test (See figure 1101.)

- A. Connect pneumatic test stand to flexible gasper air hose (9).
- B. On assemblies with speaker (44), connect variable frequency audio source to pins A and B on plug. (See figure 801.) Connect power meter to monitor output of variable frequency audio source.

3. Functional Test (See figure 1101.)

- A. With one cold air outlet (54 or 55), open (two closed), apply air at a pressure of 3.0 inches of water into flexible gasper air hose (9). Flow at cold air outlet should be 2.8 to 3.2 cubic feet per minute of standard air.

NOTE: Perform steps A through D for all three cold air outlets.

- B. Close cold air outlets (54 and 55) and apply air at a pressure of 20.0 inches of water. Leakage rate should be less than 0.11 cubic feet per minute.
- C. Measure breakaway torque required to rotate cold air outlet (54 and 55). Breakaway torque should be 4.0 pound-inches or less.
- D. Measure torque required to open or close cold air outlet (54 and 55). Opening or closing torque should be at least 0.5 pound-inches less than breakaway torque required to rotate cold air outlet.

**BOEING**   
**COMMERCIAL JET**  
**OVERHAUL MANUAL**

65-45260

- E. On assemblies with speaker (44), test speaker as follows:
- (1) Apply signal to pins A and B on plug which is comfortably audible. Do not exceed 2 watts audio power.
  - (2) Vary frequency between 300 Hz and 10,000 Hz; there should be no audible distortion.
  - (3) Set frequency at 500 Hz and apply 2 watts audio power; there should be no audible distortion.
- F. Ground pin C on plug. (See figure 801.) Apply 28 volts dc to pin D. Push switch for each reading light; reading lights should alternately come on and go off with switch actuation.
- G. Connect 28 volts dc to pin J on plug and ground pin K. Press attendant call switch; lamp in light housing assembly should come on. Remove power from pin J and check for continuity between pins N and H when attendant call switch is pressed.
- H. Check for continuity between pins N and L and pins M and H at plug.
- J. Ground pin C on plug. Apply 28 volts dc to pin E; "No Smoking" signal should illuminate on lamp fixture. Remove power from pin E and apply to pin F; "Fasten Seat Belt" signal should illuminate on lamp fixture.
- K. Test manual operation of latch-valve-manifold assembly (58) as follows:
- (1) Support passenger service unit in installed position so that oxygen box door (64) is free to open when manual release is tripped.
  - (2) Insert pencil or similarly shaped tool in hole located on side of passenger service unit below lamp fixture (1) cutout. Trip manual release button on side of latch-valve-manifold assembly (58).
  - (3) Oxygen box door (64) should fall open freely without binding.
  - (4) Close door and install button plug (4).

**BOEING**   
**COMMERCIAL JET**  
**OVERHAUL MANUAL**

TROUBLE SHOOTING

1. If failure of a test occurs, check for defective connections, incorrect wiring connections, and open wires.
2. Trouble shooting is keyed to individual steps of the test procedure. Referenced paragraphs show test procedure step in which the noted trouble would appear. (See figures 801 and 1101.)

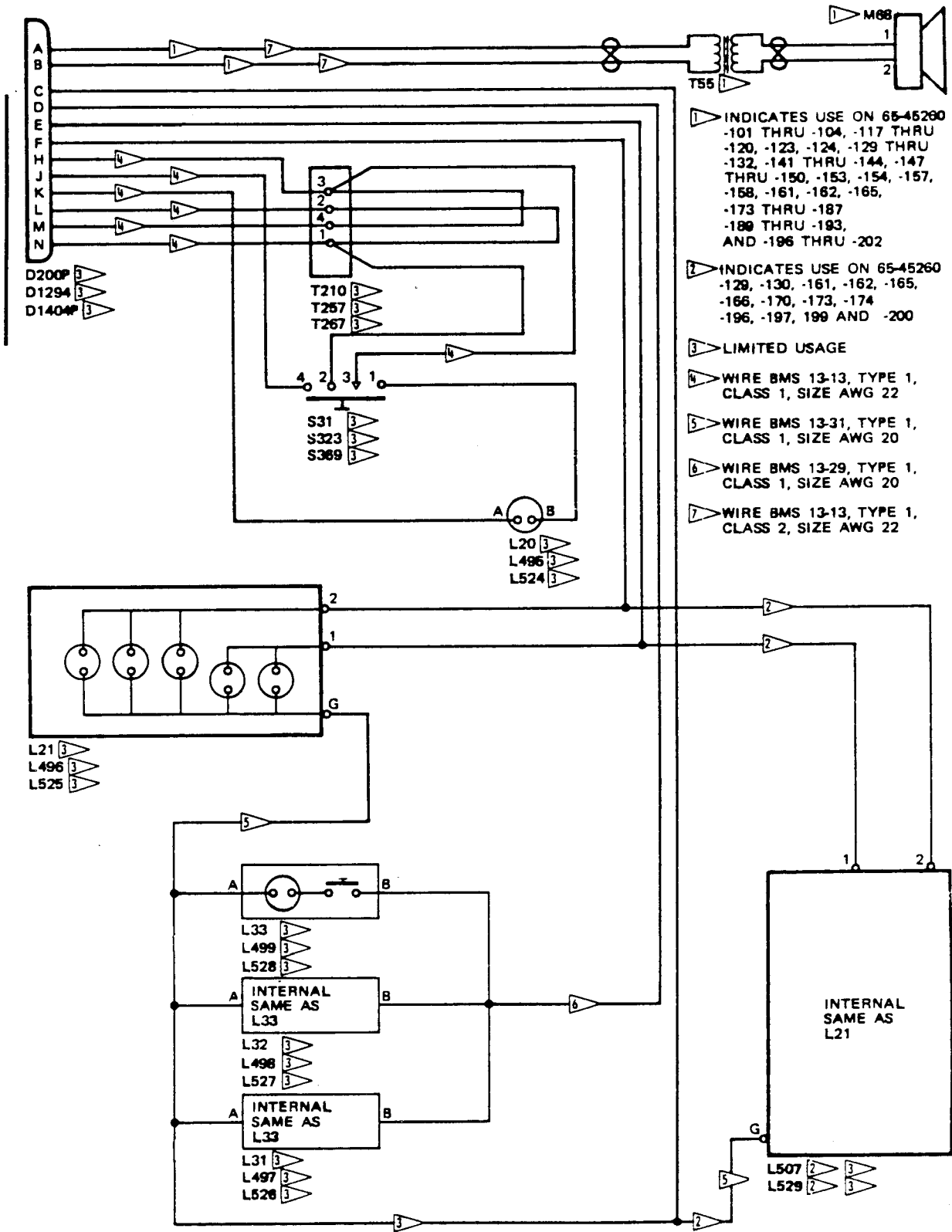
3.	<u>Trouble</u>	<u>Possible Cause</u>	<u>Correction</u>
A	Failure of step 3.A.	Defective gasper air hose (9), bellows (21), gasper air manifold (50), air duct (51 and 52), or cap (53)	Replace defective part after checking for proper installation
B.	Failure of step 3.B.	Defective cold air outlets (54 or 55)	Replace defective part
C.	Failure of steps 3.C. and 3.D.	Cold air outlets (54 or 55) binding	Adjust or replace cold air outlets as necessary
D.	Failure of step 3.E.	Speaker (M68) or transformer (T55) defective	Check continuity and replace speaker or transformer
E.	Failure of step 3.F.	Lamps or switches of reading lights (L31, L32, L33, L497, L498, L499, L526, L527, or L528) defective	Replace defective lamp or switch
		Wire bundle (37) defective	Check wire bundle for continuity and repair or replace defective wiring

**BOEING**   
**COMMERCIAL JET**  
**OVERHAUL MANUAL**

65-45260

<u>Trouble</u>	<u>Possible Cause</u>	<u>Correction</u>
F. Failure of step 3.G.	Lamp of light housing assembly (L20, L495, or L524) or attendant call switch (S31, S323, or S369) defective	Replace defective lamp or switch
	Wire bundle (37) defective	Check wire bundle for continuity and repair or replace defective wiring
G. Failure of step 3.J.	Lamp of lamp fixture (L21, L496, L507, L525, or L529) defective	Replace defective lamp
	Wire bundle (37) defective	Check wire bundle for continuity and repair or replace defective wiring
H. Failure of step 3.K.	Latch-valve manifold assembly (58) defective	Replace latch-valve manifold assembly

**BOEING**  
**COMMERCIAL JET**  
**OVERHAUL MANUAL**



Schematic Diagram  
 Figure 801

**BOEING**   
**COMMERCIAL JET**  
**OVERHAUL MANUAL**

STORAGE INSTRUCTIONS

1. General (See figure 1101.)
  - A. Check that oxygen hose assembly (29) is capped.
  - B. Secure oxygen hose assembly by taping.
  - C. Wrap whole unit in vapor barrier paper and seal airtight in a temperature controlled room with temperature of 75 ( $\pm 15$ )°F and 90% relative humidity, maximum.
  - D. Protect unit from handling damage with adequate structure or packing.

CAUTION: LOWER FACE OF SHELL ASSEMBLY, PANEL ASSEMBLY, AND OXYGEN MASK DOOR IS VISIBLE FROM CABIN INTERIOR WHEN INSTALLED. TAKE SPECIAL CARE TO PROTECT THIS AREA FROM DAMAGE DURING STORAGE.
  - E. Tag as Breathing Oxygen System Components; include part number and date part was cleaned and sealed.
  - F. For further information, refer to 20-70-01, Protection, Storage, and Handling of Airplane Components, and to 20-44-02, Temporary Protective Coatings.



**BOEING**   
**COMMERCIAL JET**  
**OVERHAUL MANUAL**

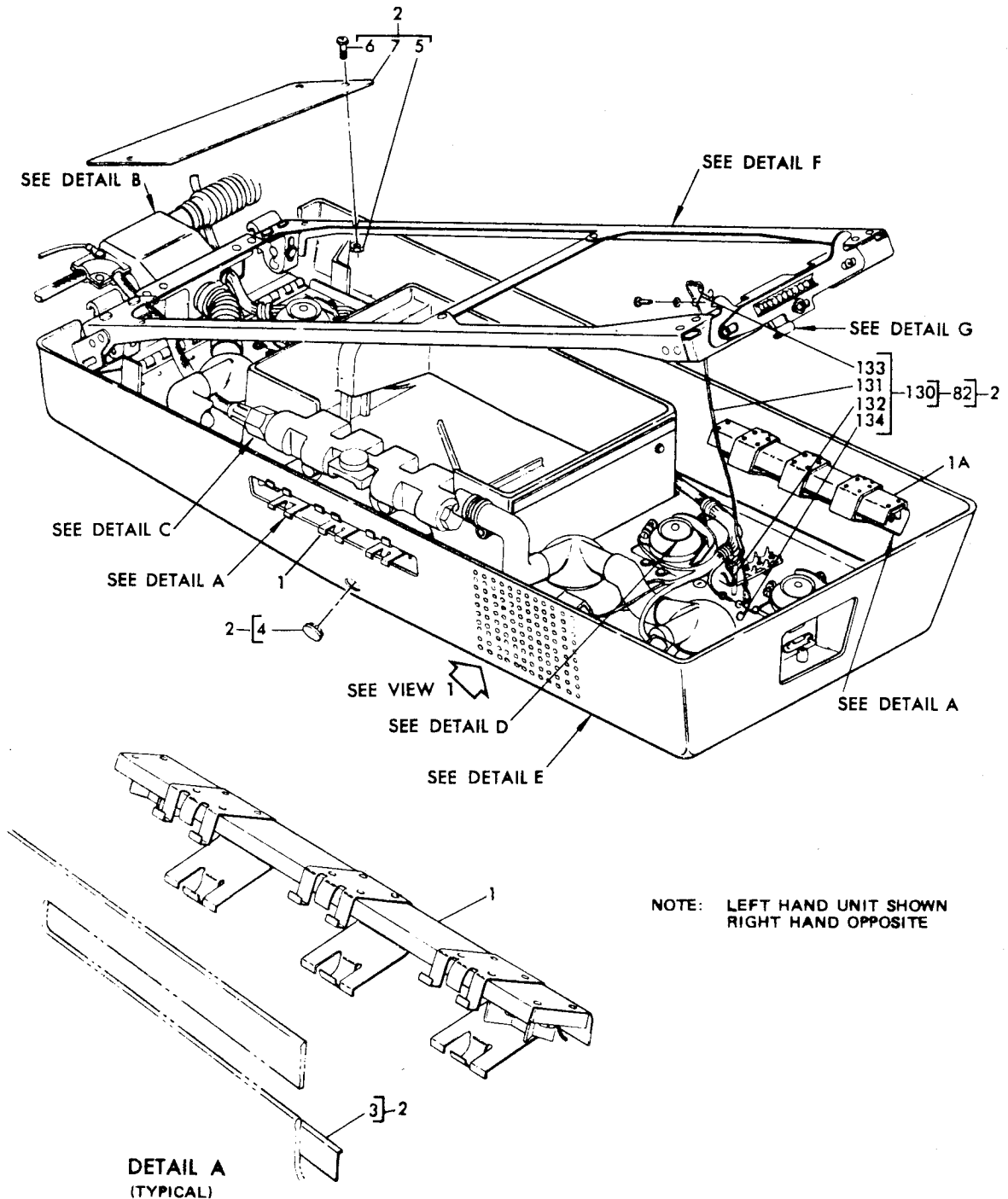
SPECIAL TOOLS, FIXTURES, AND EQUIPMENT

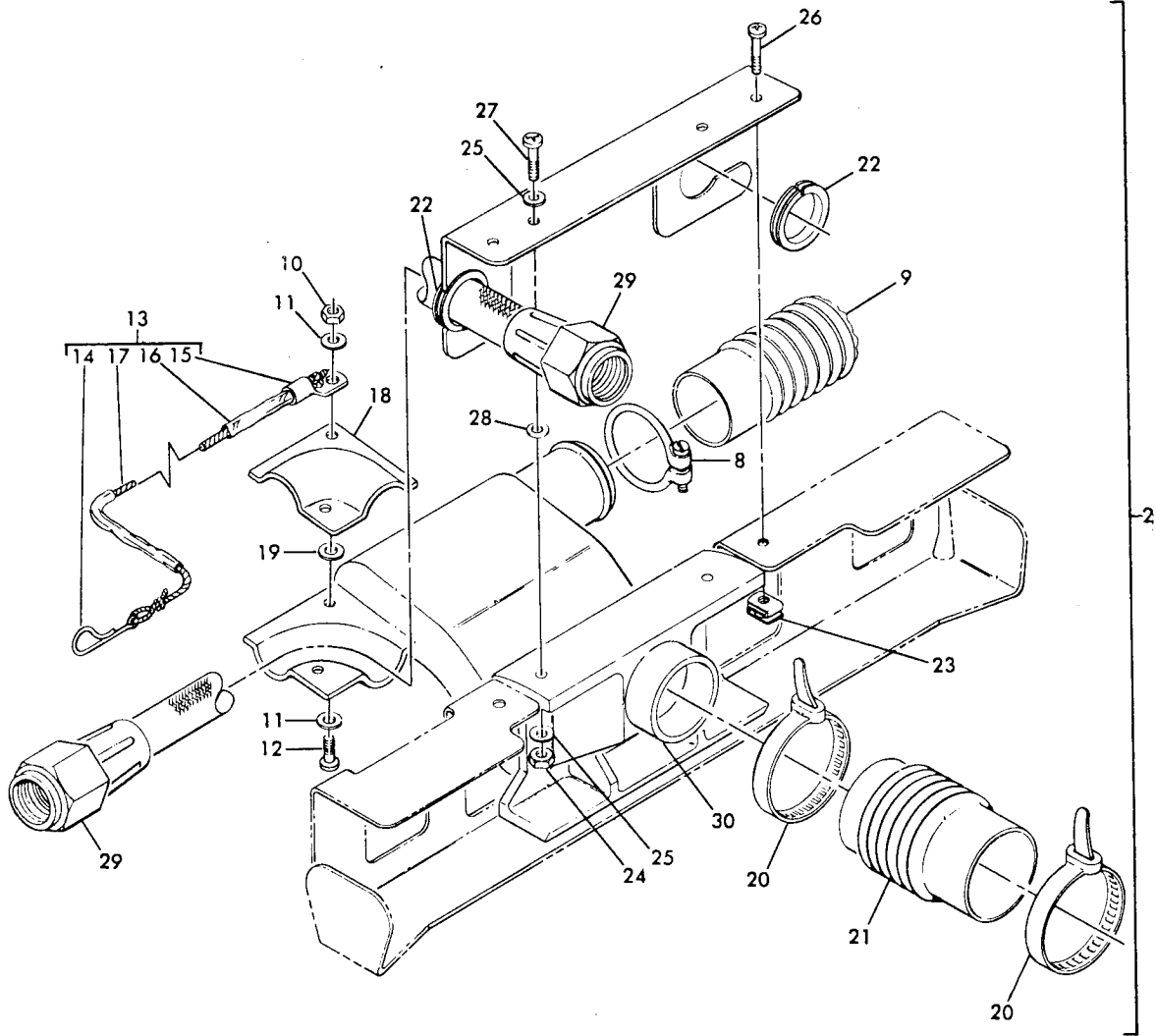
1. Tools used for repair of electrical connectors are listed in Subject 20-11-02.
2. Tools used for repair of electrical terminations and for replacement of insulating sleeving are listed in Subject 20-11-03.
3. Tools used for soldering electrical connections are listed in Subject 20-12-01.

NOTE: For additional equipment required for testing, refer to TESTING.

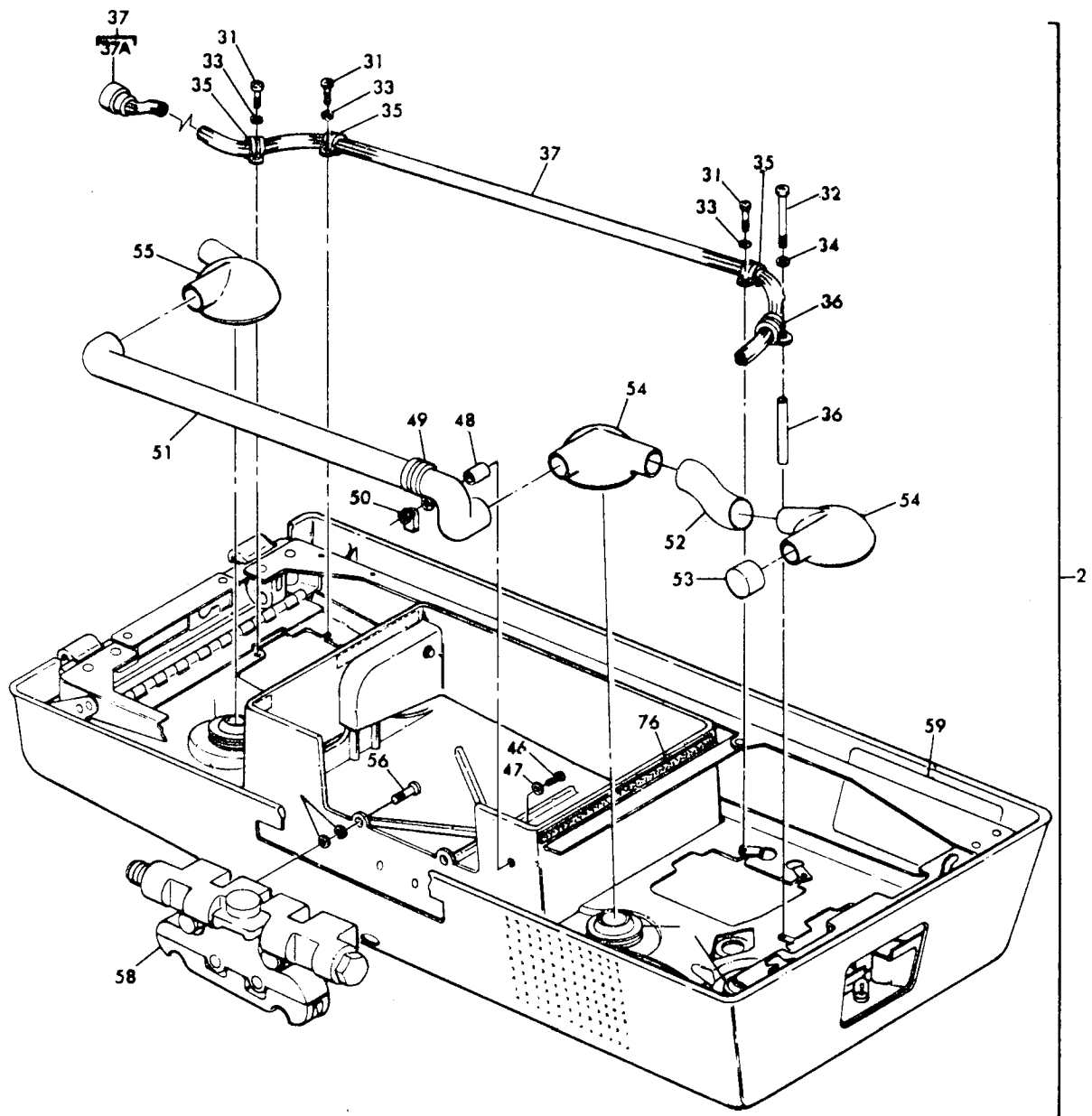
# BOEING COMMERCIAL JET OVERHAUL MANUAL

## ILLUSTRATED PARTS LIST





DETAIL B

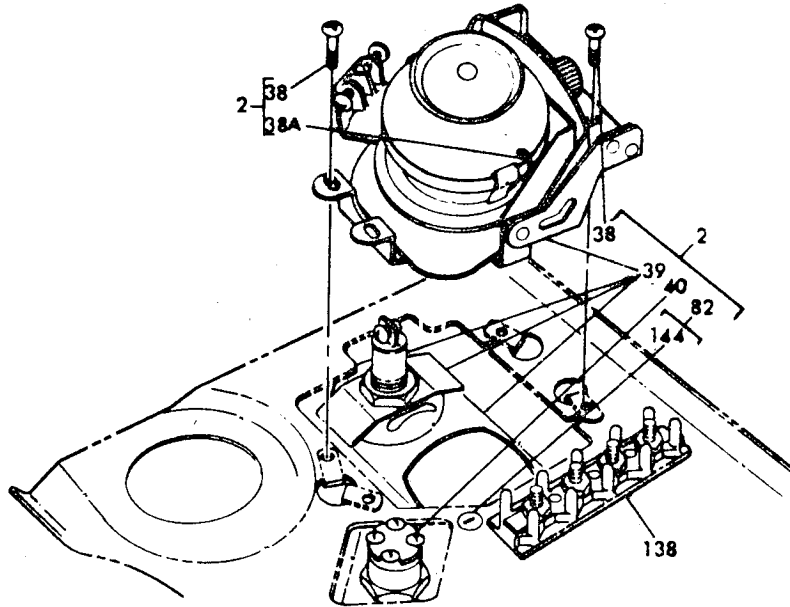


DETAIL C

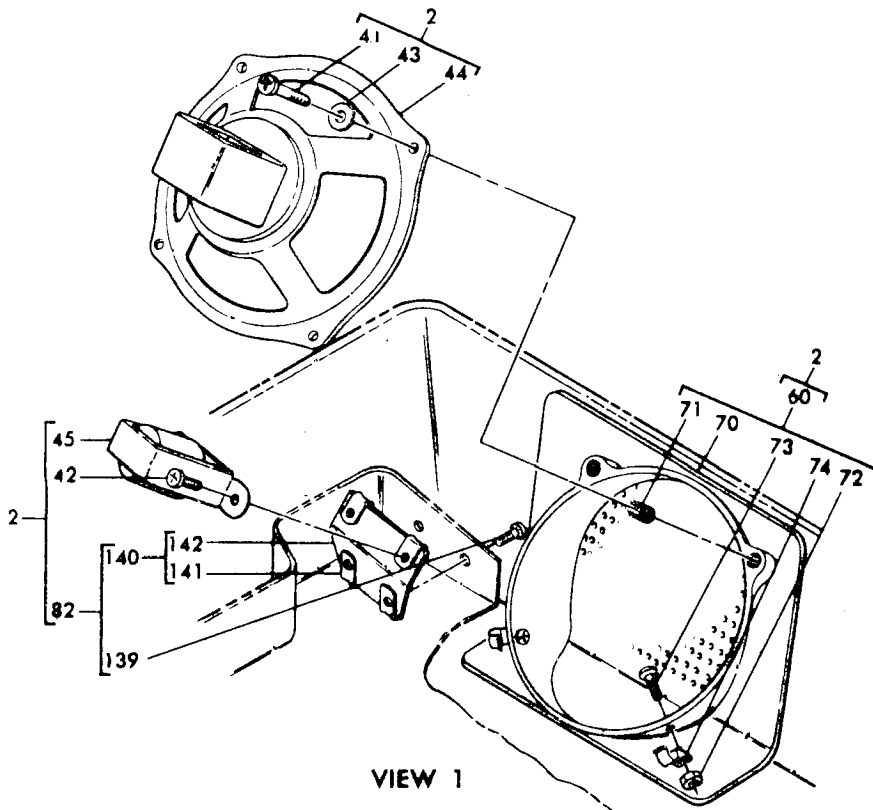
Passenger Service Unit Assembly  
Figure 1101 (Sheet 3)

**BOEING**   
**COMMERCIAL JET**  
**OVERHAUL MANUAL**

65-45260



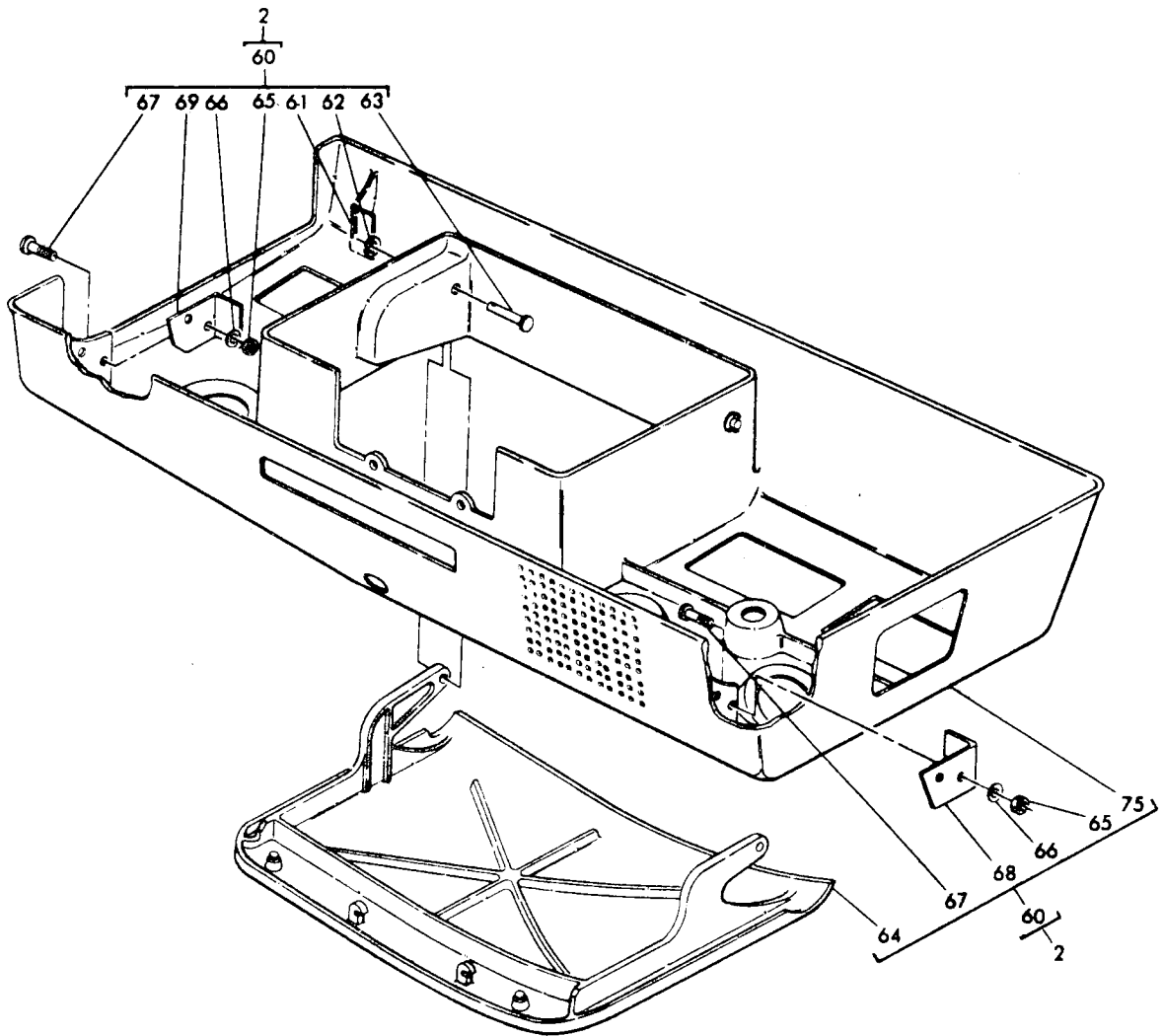
DETAIL D



VIEW 1

Passenger Service Unit Assembly  
 Figure 1101 (Sheet 4)

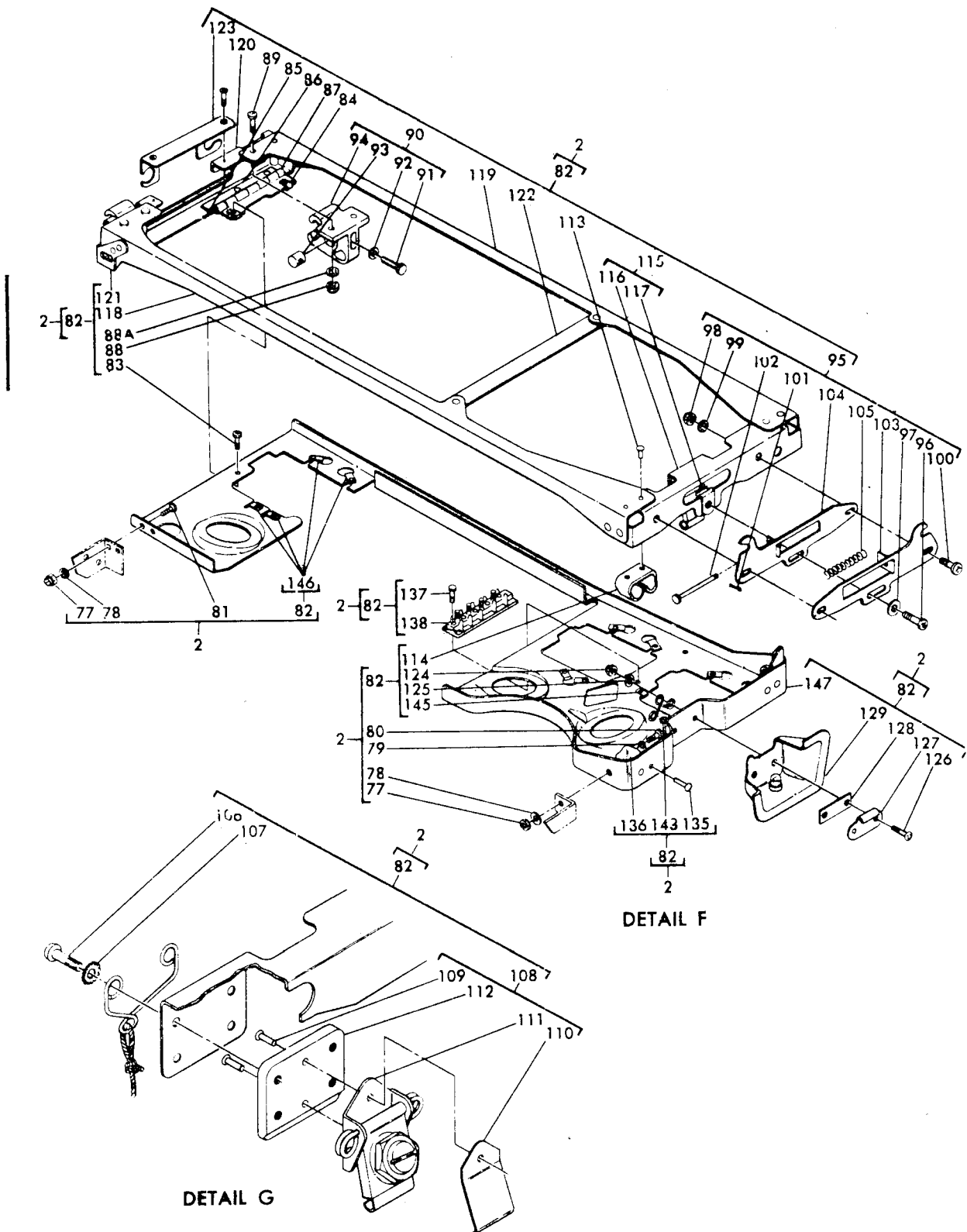
**BOEING**   
**COMMERCIAL JET**  
**OVERHAUL MANUAL**



DETAIL E

**BOEING**   
**COMMERCIAL JET**  
**OVERHAUL MANUAL**

65-45260



Passenger Service Unit Assembly  
 Figure 1101 (Sheet 6)

65-45260

**BOEING**   
**COMMERCIAL JET**  
**OVERHAUL MANUAL**

FIG. & ITEM NO.	PART NO.	AIRLINE PART NUMBER	N O M E N C L A T U R E							USE CODE	QTY PER ASSY
			1	2	3	4	5	6	7		
1101	65-45260-101		PASSENGER	SERVICE	UNIT	ASSY				a	Ref
	65-45260-102		PASSENGER	SERVICE	UNIT	ASSY				b	Ref
	65-45260-103		PASSENGER	SERVICE	UNIT	ASSY				c	Ref
	65-45260-104		PASSENGER	SERVICE	UNIT	ASSY				d	Ref
	65-45260-105		PASSENGER	SERVICE	UNIT	ASSY				e	Ref
	65-45260-106		PASSENGER	SERVICE	UNIT	ASSY				f	Ref
	65-45260-117		PASSENGER	SERVICE	UNIT	ASSY				g	Ref
	65-45260-118		PASSENGER	SERVICE	UNIT	ASSY				h	Ref
	65-45260-119		PASSENGER	SERVICE	UNIT	ASSY				j	Ref
	65-45260-120		PASSENGER	SERVICE	UNIT	ASSY				k	Ref
	65-45260-123		PASSENGER	SERVICE	UNIT	ASSY				l	Ref
	65-45260-124		PASSENGER	SERVICE	UNIT	ASSY				m	Ref
	65-45260-125		DELETED								
	65-45260-126		DELETED								
	65-45260-127		DELETED								
	65-45260-128		DELETED								
	65-45260-129		PASSENGER	SERVICE	UNIT	ASSY				n	Ref
	65-45260-130		PASSENGER	SERVICE	UNIT	ASSY				p	Ref
	65-45260-131		PASSENGER	SERVICE	UNIT	ASSY				q	Ref
	65-45260-132		PASSENGER	SERVICE	UNIT	ASSY				r	Ref
	65-45260-141		PASSENGER	SERVICE	UNIT	ASSY				s	Ref
	65-45260-142		PASSENGER	SERVICE	UNIT	ASSY				t	Ref
	65-45260-143		PASSENGER	SERVICE	UNIT	ASSY				u	Ref
	65-45260-144		PASSENGER	SERVICE	UNIT	ASSY				v	Ref
	65-45260-145		PASSENGER	SERVICE	UNIT	ASSY				w	Ref
	65-45260-146		PASSENGER	SERVICE	UNIT	ASSY				x	Ref
	65-45260-147		PASSENGER	SERVICE	UNIT	ASSY				y	Ref
	65-45260-148		PASSENGER	SERVICE	UNIT	ASSY				z	Ref
	65-45260-149		PASSENGER	SERVICE	UNIT	ASSY				A	Ref
	65-45260-150		PASSENGER	SERVICE	UNIT	ASSY				B	Ref
	65-45260-153		PASSENGER	SERVICE	UNIT	ASSY				C	Ref
	65-45260-154		PASSENGER	SERVICE	UNIT	ASSY				D	Ref
	65-45260-157		PASSENGER	SERVICE	UNIT	ASSY				E	Ref
	65-45260-158		PASSENGER	SERVICE	UNIT	ASSY				F	Ref
	65-45260-159		PASSENGER	SERVICE	UNIT	ASSY				G	Ref
	65-45260-160		PASSENGER	SERVICE	UNIT	ASSY				H	Ref
	65-45260-161		PASSENGER	SERVICE	UNIT	ASSY				I	Ref
	65-45260-162		PASSENGER	SERVICE	UNIT	ASSY				K	Ref
	65-45260-165		PASSENGER	SERVICE	UNIT	ASSY				L	Ref
	65-45260-166		PASSENGER	SERVICE	UNIT	ASSY				M	Ref
	65-45260-167		PASSENGER	SERVICE	UNIT	ASSY				N	Ref



**BOEING**   
**COMMERCIAL JET**  
**OVERHAUL MANUAL**

65-45260

FIG. & ITEM NO.	PART NO.	AIRLINE PART NUMBER	N O M E N C L A T U R E							USE CODE	QTY PER ASSY
			1	2	3	4	5	6	7		
1101	65-45260-168		P								Ref
	65-45260-169		Q								Ref
	65-45260-170		R								Ref
	65-45260-171		S								Ref
	65-45260-172		T								Ref
	65-45260-173		U								Ref
	65-45260-174		V								Ref
	65-45260-175		W								Ref
	65-45260-176		X								Ref
	65-45260-177		Y								Ref
	65-45260-178		Z								Ref
	65-45260-179		AA								Ref
	65-45260-180		BA								Ref
	65-45260-181		CA								Ref
	65-45260-182		DA								Ref
	65-45260-183		EA								Ref
	65-45260-184		FA								Ref
	65-45260-185		GA								Ref
	65-45260-186		HA								Ref
	65-45260-187		IA								Ref
	65-45260-188		JA								Ref
	65-45260-189		KA								Ref
	65-45260-190		LA								Ref
	65-45260-191		MA								Ref
	65-45260-192		NA								Ref
	65-45260-193		OA								Ref
	65-45260-194		PA								Ref
	65-45260-195		QA								Ref
	65-45260-196		RA								Ref
	65-45260-197		SA								Ref
	65-45260-198		TA								Ref
	65-45260-199		UA								Ref
	65-45260-200		VA								Ref
	65-45260-201		WA								Ref
	65-45260-202		XA								Ref
1	42355-19-387		.	FIXTURE, Lamp, V72914 (Boeing 10-60277-19)						cjuSY	
1	42355-20-387		.	FIXTURE, Lamp, V72914 (Boeing 10-60277-20)						FA	1
1	42355-7-387		.	FIXTURE, Lamp, V72914 (Boeing 10-60277-7)						dkvTZ	
										GA	1
										agsQW	
										XA	1

**BOEING**   
**COMMERCIAL JET**  
**OVERHAUL MANUAL**

FIG. & ITEM NO.	PART NO.	AIRLINE PART NUMBER	N O M E N C L A T U R E							USE CODE	QTY PER ASSY			
			1	2	3	4	5	6	7					
1101														
1	42355-8-387		.	F	I	X	T	U	R	E	, Lamp, V72914 (Boeing 10-60277-8)	bhtrX EA	1	
1	10-0040-1		.	F	I	X	T	U	R	E	, Lamp, V72914 (Boeing 10-60781-1)	efl-r w-PUV AA-DA HA-WA nJLRA TA	1 1	
1A	42355-3-387		.	F	I	X	T	U	R	E	, Lamp, V72914 (Boeing 10-60277-3)	TA	1	
1A	42355-4-387		.	F	I	X	T	U	R	E	, Lamp, V72914 (Boeing 10-60277-4)	pKMUV SA UA VA WA	1	
2	65-45260-1		.	B	A	S	I	C	A	S	S	Y, PSU	ac	1
2	65-45260-2		.	B	A	S	I	C	A	S	S	Y, PSU	bd	1
2	65-45260-5		.	B	A	S	I	C	A	S	S	Y, PSU	e	1
2	65-45260-6		.	B	A	S	I	C	A	S	S	Y, PSU	f	1
2	65-45260-11		.	B	A	S	I	C	A	S	S	Y, PSU	gj	1
2	65-45260-12		.	B	A	S	I	C	A	S	S	Y, PSU	hk	1
2	65-45260-13		.	B	A	S	I	C	A	S	S	Y, PSU	l	1
2	65-45260-14		.	B	A	S	I	C	A	S	S	Y, PSU	m	1
2	65-45260-15		.	D	E	L	E	T	E	D				
2	65-45260-16		.	D	E	L	E	T	E	D				
2	65-45260-17		.	D	E	L	E	T	E	D				
2	65-45260-18		.	D	E	L	E	T	E	D				
2	65-45260-19		.	B	A	S	I	C	A	S	S	Y, PSU	n	1
2	65-45260-20		.	B	A	S	I	C	A	S	S	Y, PSU	p	1
2	65-45260-21		.	B	A	S	I	C	A	S	S	Y, PSU	q	1
2	65-45260-22		.	B	A	S	I	C	A	S	S	Y, PSU	r	1
2	65-45260-33		.	B	A	S	I	C	A	S	S	Y, PSU	su	1
2	65-45260-34		.	B	A	S	I	C	A	S	S	Y, PSU	tv	1
2	65-45260-35		.	B	A	S	I	C	A	S	S	Y, PSU	w	1
2	65-45260-36		.	B	A	S	I	C	A	S	S	Y, PSU	x	1
2	65-45260-37		.	B	A	S	I	C	A	S	S	Y, PSU	y	1
2	65-45260-38		.	B	A	S	I	C	A	S	S	Y, PSU	z	1
2	65-45260-39		.	B	A	S	I	C	A	S	S	Y, PSU	A	1
2	65-45260-40		.	B	A	S	I	C	A	S	S	Y, PSU	B	1
2	65-45260-43		.	B	A	S	I	C	A	S	S	Y, PSU	C	1
2	65-45260-44		.	B	A	S	I	C	A	S	S	Y, PSU	D	1
2	65-45260-47		.	B	A	S	I	C	A	S	S	Y, PSU	EQS	1
2	65-45260-48		.	B	A	S	I	C	A	S	S	Y, PSU	FRT	1
2	65-45260-49		.	B	A	S	I	C	A	S	S	Y, PSU	G	1
2	65-45260-50		.	B	A	S	I	C	A	S	S	Y, PSU	H	1

**BOEING**   
**COMMERCIAL JET**  
**OVERHAUL MANUAL**

65-45260

FIG. & ITEM NO.	PART NO.	AIRLINE PART NUMBER	N O M E N C L A T U R E							USE CODE	QTY PER ASSY
			1	2	3	4	5	6	7		
1101											
2	65-45260-51		. BASIC ASSY, PSU							J	1
2	65-45260-52		. BASIC ASSY, PSU							K	1
2	65-45260-55		. BASIC ASSY, PSU							L	1
2	65-45260-56		. BASIC ASSY, PSU							M	1
2	65-45260-59		. BASIC ASSY, PSU							N	1
2	65-45260-60		. BASIC ASSY, PSU							P	1
2	65-45260-64		. BASIC ASSY, PSU							U	1
2	65-45260-65		. BASIC ASSY, PSU							V	1
2	65-45260-66		. BASIC ASSY, PSU							WY	1
2	65-45260-67		. BASIC ASSY, PSU							XZ	1
2	65-45260-68		. BASIC ASSY, PSU							AA	1
2	65-45260-69		. BASIC ASSY, PSU							BA	1
2	65-45260-70		. BASIC ASSY, PSU							CA XA	1
2	65-45260-71		. BASIC ASSY, PSU							DA-GA	1
2	65-45260-72		. BASIC ASSY, PSU							HA	1
2	65-45260-73		. BASIC ASSY, PSU							IA	1
2	65-45260-74		. BASIC ASSY, PSU							JA	1
2	65-45260-75		. BASIC ASSY, PSU							KA	1
2	65-45260-76		. BASIC ASSY, PSU							LA	1
2	65-45260-77		. BASIC ASSY, PSU							MA	1
2	65-45260-78		. BASIC ASSY, PSU							NA	1
2	65-45260-79		. BASIC ASSY, PSU							OA	1
2	65-45260-80		. BASIC ASSY, PSU							PA	1
2	65-45260-81		. BASIC ASSY, PSU							QA	1
2	65-45260-82		. BASIC ASSY, PSU							RA	1
2	65-45260-83		. BASIC ASSY, PSU							SA	1
2	65-45260-84		. BASIC ASSY, PSU							TA	1
2	65-45260-85		. BASIC ASSY, PSU							UA	1
2	65-45260-86		. BASIC ASSY, PSU							VA	1
2	65-45260-87		. BASIC ASSY, PSU							WA	1
3	65-71061-151		. . ANGLE, Stiffener							efwx JA KA	1
4	65-45260-8		. . PLUG, Button								1
5	BACN10JC04		. . NUT, Self-locking (replaces NAS679A04W)								3
6	NAS600-4P		. . SCREW, Machine (replaces NAS600-4)								3
7	66-26012-3		. . HEAT SHIELD								1
8	6203		. . CLAMP ASSY, V81646 (replaces 2000-5)								1
9	EE406-3		. . HOSE, Flexible gasper air, V05399 (preferred)								1

**BOEING**   
**COMMERCIAL JET**  
**OVERHAUL MANUAL**

FIG. & ITEM NO.	PART NO.	AIRLINE PART NUMBER	N O M E N C L A T U R E							USE CODE	QTY PER ASSY
			1	2	3	4	5	6	7		
1101											
9	AD604-3										1
10	BACN10JC04										2
11	AN960D4										4
12	NAS600-7P										2
13	69-42827-1										1
14	63-9446										1
15	MS20659-26										1
16	69-42827-3										1
17	69-42827-2										1
18	65-32229-3									*[1]	1
18	65-32229-4									*[2]	1
18	65-51315-3									*[8]	1
18	65-51315-4									*[9]	1
19	NAS549-4										AR
20	6203										2
20	MS17821-1-9										2
21	65-72073-5										1
22	NAS557-8B										2
23	BACN10FX61										2
24	BACN10JC06										2
25	AN960D6										2
26	NAS514P632-6										4
27	NAS514P632-6										2
28	AN960PD10										2
29	ZH680-30										2
29	ZH833-26									a-V	1
30	65-32229-1									Y-XA	1
30	65-32229-2									*[1]	1
30	65-51315-1									*[2]	1
30	65-51315-2									*[8]	1
31	NAS601-6P									*[9]	1
32	BACSL2CB3-36										3
32	NAS603-36P										1
											1

**BOEING**   
**COMMERCIAL JET**  
**OVERHAUL MANUAL**

65-45260

FIG. & ITEM NO.	PART NO.	AIRLINE PART NUMBER	N O M E N C L A T U R E							USE CODE	QTY PER ASSY
			1	2	3	4	5	6	7		
1101											
33	AN960D8										3
34	AN960D10L										1
35	BACC10DK6										4
36	NAS42DD3-112										1
37	61-30050-1									*[10]	1
37	61-30050-2									*[11]	1
37	61-30050-4									*[12]	1
37	61-30650-1									*[13]	1
37	61-30670-1									*[14]	1
37A	67-907										1
38	NAS601-4P										10
38A	69-55898-1									*[18]	3
39	10-0050-51										3
39	10-0050-52									*[15]	3
39	10-0050-55									*[16]	3
39	10-0050-56									efwJA	3
39	10-0050-57									nKA	3
39	10-0050-58									1A 1A	3
39	65-70773-10									mBMA	3
39	65-70773-13										
39	65-70773-14										
40	A20158CBL										
40	A20238BL										
41	NAS601-7P										
42	NAS601-6P										
43	AN960D8										

**BOEING**   
**COMMERCIAL JET**  
**OVERHAUL MANUAL**

FIG. & ITEM NO.	PART NO.	AIRLINE PART NUMBER	N O M E N C L A T U R E							USE CODE	QTY PER ASSY
			1	2	3	4	5	6	7		
1101											
44	V5C115		.	.	SPEAKER, V80331					a-d	1
										q-r	
44	V5C134		.	.	SPEAKER, V80331 (preferred)					*[17]	1
44	V5C115		.	.	SPEAKER, V80331 (optional)					*[17]	1
44	V5C134		.	.	SPEAKER, V80331					*[19]	1
45	T57272		.	.	TRANSFORMER, V96256 (preferred)					a-d	1
45	24S48V		.	.	TRANSFORMER, V96256 (optional)					a-d	1
45	T57272		.	.	TRANSFORMER, V96256					*[20]	1
46	NAS602-16P		.	.	SCREW, Machine (replaces NAS602-16)						1
47	AN960D8L		.	.	WASHER, Flat						1
48	NAS43DD3-11		.	.	SPACER						1
49	BACC10DK14		.	.	CLAMP						1
50	BACN10FX84		.	.	NUT, Clip-on (replaces BACN10FX82)						1
51	69-4855-2		.	.	AIR DUCT					*[26]	1
51	69-4855-1		.	.	AIR DUCT					*[21]	1
52	63-9929		.	.	AIR DUCT						1
53	NAS820-14S		.	.	PLUG (preferred)						1
53	LT3/4		.	.	CAP, Long tube (optional)						1
54	L16999-13		.	.	OUTLET, Cold air, V17744 (Boeing 10-60141-13)(preferred)						2
54	L16999-9		.	.	OUTLET, Cold air, V17744 (Boeing 10-60141-9)(optional)						2
55	L16999-14		.	.	OUTLET, Cold air, V17744 (Boeing 10-60141-14)(preferred)						1
55	L16999-10		.	.	OUTLET, Cold air, V17744 (Boeing 10-60141-10)(optional)						1
56	NAS603-18P		.	.	SCREW, Machine (replaces NAS603-18)						4
57	NAS549MH10		.	.	WASHER, Fiber						4
58	10-61399-1		.	.	DELETED						
58	10-61399-2		.	.	DELETED						
58	115010		.	.	MANIFOLD ASSY, Latch-valve, V16827 (Boeing 10-60513-1)					*[21]	1
58	115011		.	.	MANIFOLD ASSY, Latch-valve, V16827 (Boeing 10-60513-2)					*[26]	1
59	BAC27DPA62		.	.	MARKER						1
59	BAC27DPA109		.	.	MARKER					nJLRA	1
										TA	
59	BAC27DPA122		.	.	MARKER					PKMSA	
										UA	1

**BOEING**   
**COMMERCIAL JET**  
**OVERHAUL MANUAL**

65-45260

FIG. & ITEM NO.	PART NO.	AIRLINE PART NUMBER	N O M E N C L A T U R E							USE CODE	QTY PER ASSY
			1	2	3	4	5	6	7		
1101											
60	65-52358-3		.	.	SHELL ASSY (preferred)					*[22]	1
60	65-5382-49		.	.	SHELL ASSY (optional)					*[22]	1
60	65-52358-3		.	.	SHELL ASSY					*[24]	1
60	65-52358-4		.	.	SHELL ASSY (preferred)					*[23]	1
60	65-5382-50		.	.	SHELL ASSY (optional)					*[23]	1
60	65-52358-4		.	.	SHELL ASSY					*[25]	1
60	65-52358-5		.	.	SHELL ASSY (preferred)					ewJA	1
60	65-5382-47		.	.	SHELL ASSY (optional)					ewJA	1
60	65-52358-5		.	.	SHELL ASSY					G,PA	1
60	65-52358-6		.	.	SHELL ASSY (preferred)					fxKA	1
60	65-5382-48		.	.	SHELL ASSY (optional)					fxKA	1
60	65-52358-6		.	.	SHELL ASSY					H,QA	1
60	65-45260-23		.	.	SHELL ASSY					n/ LU	1
										RA TA	
										VA	
60	65-45260-24		.	.	SHELL ASSY					pKMV	1
										SA UA	
										WA	
61	MS2465-130		.	.	PIN, Cotter						2
62	AN960D4		.	.	WASHER						2
63	MS20392-1C19		.	.	PIN, Flathead						2
64	65-52358-15		.	.	DOOR, Oxygen box (used on 65-52358-3,-5, 65-45260-23)						1
64	65-5382-33		.	.	DOOR, Oxygen box (used on 65-5382-47,-49)						1
64	65-52358-16		.	.	DOOR, Oxygen box (used on 65-52358-4,-6, 65-45260-24)						1
64	65-5382-34		.	.	DOOR, Oxygen box (used on 65-5382-48,-50)						1
65	BACN107C08		.	.	NUT, Self-locking (replaces NAS679A08W)						4
66	AN960D8		.	.	WASHER, Flat						4
67	NAS602-6P		.	.	SCREW, Machine (replaces NAS602-6)						4
68	69-42655-1		.	.	ANGLE ATTACHMENT, Lower pan (used on 65-52358-3,-5, 65-5382-47,-49, 65-45260-23)						1
68	69-42655-2		.	.	ANGLE ATTACHMENT, Lower pan (used on 65-52358-4,-6, 65-5382-48,-50, 65-45260-24)						1
69	69-42655-3		.	.	ANGLE ATTACHMENT, Lower pan (used on 65-52358-3,-5, 65-5382-47,-49, 65-45260-23)						1

**BOEING**   
**COMMERCIAL JET**  
**OVERHAUL MANUAL**

FIG. & ITEM NO.	PART NO.	AIRLINE PART NUMBER	N O M E N C L A T U R E							USE CODE	QTY PER ASSY
			1	2	3	4	5	6	7		
1101											
69	69-42655-4		. . . ANGLE ATTACHMENT, Lower pan (used on 65-52358-4, -6, 65- 5382-48, -50, 65-45260-24)								1
70	65-52358-19		. . . SPEAKER MOUNT (used on 65- 52358-3, 65-45260-23)								1
70	65-5382-7		. . . SPEAKER MOUNT (used on 65- 5382-49)								1
70	65-52358-20		. . . SPEAKER MOUNT (used on 65- 52358-4, 65-45260-24)								1
70	65-5382-9		. . . SPEAKER MOUNT (used on 65- 5382-50)								1
71	SPA-0632-S		. . . INSERT (used on 65-52358-3, -4, 65-45260-23, -24)(replaces MS21208C0615)*[7]								2
72	BACN10JC06		. . . NUT, Self-locking (used on 65- 52358-3, -4, 65-45260-23, -24) (replaces NAS679A06W)								2
73	NAS601-5P		. . . SCREW, Machine (used on 65- 52358-3, -4, 65-45260-23, -24) (replaces NAS60F5)								2
74	66-11773-1		. . . CLIP, Speaker retainer (used on 65-52358-3, -4, 65-45260-23, -24)								2
75	65-52358-9		. . . SHELL (used on 65-52358-3, 65- 45260-23)								1
75	65-52358-11		. . . SHELL (used on 65-52358-5)								1
75	65-5382-31		. . . SHELL (used on 65-5382-47, -49)								1
75	65-52358-10		. . . SHELL (used on 65-52358-4, 65- 45260-24)								1
75	65-52358-12		. . . SHELL (used on 65-52358-6)								1
75	65-5382-32		. . . SHELL (used on 65-5382-48, -50)								1
76	65-45260-7		. . . TAPE, Velcro								1
77	BACN10JC08		. . . NUT, Self-locking (replaces NAS679A08W)								4
78	AN960D8		. . . WASHER, Flat								4
79	AN960D8L		. . . WASHER, Flat								2
80	NAS602-8P		. . . SCREW, Machine (replaces NAS602- 8)								2
81	NAS602-6		. . . SCREW, Machine								2
82	65-45260-3		. . . FRAME ASSY, LH							acgjl q	1



**BOEING**   
**COMMERCIAL JET**  
**OVERHAUL MANUAL**

65-45260

FIG. & ITEM NO.	PART NO.	AIRLINE PART NUMBER	N O M E N C L A T U R E							USE CODE	QTY PER ASSY
			1	2	3	4	5	6	7		
1101											
82	65-45260-4		.	.						bdfhk	1
										pr	
82	65-45260-57		.	.						*[27]	1
82	65-45260-58		.	.						*[28]	1
82	65-45260-61		.	.						N HA	1
82	65-45260-62		.	.						P IA	1
83	NAS601-6P		.	.	.						6
											6
84	BACN10FX61		.	.	.						6
85	MS20253-2-740		.	.	.						1
86	65-71061-21		.	.	.						1
											1
86	65-71061-22		.	.	.						1
											1
87	65-71061-29		.	.	.						1
											1
87	65-71061-30		.	.	.						1
											1
88	MS20341-6A		.	.	.						4
88	NAS679A06W		.	.	.						4
88A	MS35335-2		.	.	.						4
											4
89	NAS601-6P		.	.	.						4
											4
90	69-33685-1		.	.	.						2
											2
91	BACS12CB3-16		.	.	.						1
92	AN960D10L		.	.	.						1
93	SL421-3		.	.	.						1
											1
93	66-22333-1		.	.	.						1
94	69-33685-2		.	.	.						1
95	H701-1		.	.	.						1
96	NAS602-7P		.	.	.						1
											1
97	HSP147-2		.	.	.						1
98	BACN10JC3		.	.	.						2
											2
99	MS35333-39		.	.	.						2
											2

**BOEING**   
**COMMERCIAL JET**  
**OVERHAUL MANUAL**

FIG. & ITEM NO.	PART NO.	AIRLINE PART NUMBER	N O M E N C L A T U R E							USE CODE	QTY PER ASSY
			1	2	3	4	5	6	7		
1101											
100	104865-1										2
101	MS24665-132										1
102	MS20392-1C63										1
103	104863-1										1
104	104862-1										1
105	104864										1
106	NAS601-4P										4
107	MS35335-30										4
108	66-11160										1
109	BACR15BA4D										2
110	66-11160-3										1
111	B1900-514										1
112	66-11160-1										1
113	BACR15DA5-4										4
114	63-2638-1										2
115	66-11159-1										1
115	66-11159-2										1
116	66-11159-3										1
116	66-11159-4										1
117	BACN10FX84										1
117	BACN10JR3										1
118	69-33690-1										1
118	69-33690-2										1
119	69-33691-1										1
119	69-33691-2										1
120	66-22138-1										1
120	66-22138-2										1
121	69-24045										1

**BOEING**  
  
**COMMERCIAL JET**  
**OVERHAUL MANUAL**

65-45260

FIG. & ITEM NO.	PART NO.	AIRLINE PART NUMBER	N O M E N C L A T U R E							USE CODE	QTY PER ASSY
			1	2	3	4	5	6	7		
1101											
122	65-71061-17		.	.	.						1
123	66-22139-1		.	.	.						1
123	66-22139-2		.	.	.						1
124	BACN10JC06		.	.	.						2
125	AN960D6L		.	.	.						2
126	NAS601-7P		.	.	.						2
127	65-48566-27		.	.	.						1
127	B1900-334		.	.	.						1
128	66-11160-2		.	.	.						AR
129	A366-1		.	.	.						1
129	A366-3		.	.	.						1
130	69-55038-1		.	.	.						1
130	69-56289-1		.	.	.						1
130	66-10729-3		.	.	.						1
130	66-10729-4		.	.	.						1
131	69-55038-2		.	.	.						1
131	66-10729-1		.	.	.						1
132	69-55039-1		.	.	.						1
132	63-10191		.	.	.						1
133	63-10191-1		.	.	.						1
134	63-10191-2		.	.	.						1
135	BACR15DA5-4		.	.	.						4
136	66-4492-2		.	.	.						1
136	66-4492-1		.	.	.						1
137	NAS600-4		.	.	.						2
138	MS25123-1-4		.	.	.						1
139	NAS601-6P		.	.	.						2

**BOEING**   
**COMMERCIAL JET**  
**OVERHAUL MANUAL**

FIG. & ITEM NO.	PART NO.	AIRLINE PART NUMBER	N O M E N C L A T U R E							USE CODE	QTY PER ASSY	
			1	2	3	4	5	6	7			
1101 140	66-11292-1		.	.	.	BRACKET ASSY, Transformer support (used on 65-45260-3, -57, -61)					1	
140	66-11292-2		.	.	.	BRACKET ASSY, Transformer support (used on 65-45260-4, -58, -62)					1	
141	BACNLOFX61		.	.	.	.	NUTPLATE, Clip-on					4
142	66-11292-3		.	.	.	.	BRACKET (used on 66-11292-1)					1
142	66-11292-4		.	.	.	.	BRACKET (used on 66-11292-2)					1
143	NAS1368N4A		.	.	.	.	GROMMET, Flip					1
144	BACMLON00-2S		.	.	.	.	MARKER					1
145	BACNLOFX1		.	.	.	.	NUT, Clip-on					1
146	BACNLOFX61		.	.	.	.	NUT, Clip-on					12
147	65-6374-11		.	.	.	LOWER PAN (used on 65-45260-3, -57, -61)					1	
147	65-6374-12		.	.	.	LOWER PAN (used on 65-45260-4, -58, -62)					1	

- \*[1] a, c, e, g, j, l, n, q, s, u, w, y, A, C, G, J, L, N, W, AA, HA, JA, MA, NA, RA, TA
- \*[2] b, d, f, h, k, m, p, r, t, v, x, z, B, D, H, K, N, P, Z, BA, IA, KA, OA, QA, SA, UA,
- \*[3] Used on all assemblies except 65-45260-5, -6, -74, and -75
- \*[4] a-d, g-v, y-F, J-IA, LA-OA, RA-XA
- \*[5] Limited usage
- \*[6] Northwest Plastic Industries, 6361 1st St., Seattle, Washington 98108
- \*[7] Tridair Industries, Fastener Division, 3000 W Lomita Blvd., Torrance, California 90505
- \*[8] E, P, Q, S, V, CA, VA
- \*[9] F, R, T, U, DA, WA
- \*[10] a-d, g-k, s-v, U, W-Z, VA
- \*[11] e, f, w, x, G, H, JA, KA, PA, QA
- \*[12] l, m, q, r, y, z, A-F, N-T, AA-IA, LA-OA, XA, WA

**BOEING**   
**COMMERCIAL JET**  
**OVERHAUL MANUAL**

65-45260

- \*[13] n, J, L, U, W, Y, RA, TA
- \*[14] p, K, M, V, SA, UA, WA
- \*[15] a, c, g, j, n, q, s, u, y, C, E, G, J, K, N, Q, S, V, W, Y, AA, CA, HA, NA, PA, RA, TA, WA, XA
- \*[16] b, d, h, k, p, r, t, v, z, D, F, H, K, L, M, P, R, T, U, X, Z, BA, DA-GA, IA, OA, QA, SA, UA, VA
- \*[17] s-v, y, A-F, J, K, M, N, P-T
- \*[18] 69-55898-1 ring used to rework 10-60914-17, -18, -20, and -21 into 10-60914-37, -38, -41, -42 and -44
- \*[19] IA, LA-OA, RA-WA
- \*[20] g-v, y-F, J-IA, LA-OA, RA-XA
- \*[21] a, c, e, g, j, l, n, q, s, u, w, y, A, C, E, G, J, L, N, Q, S, V, W, Y, AA, CA, HA, JA, MA, NA, PA, RA, TA, VA, XA
- \*[22] a, c, g, j, l, s, u, A, W, Y, MA
- \*[23] b, d, h, k, m, t, v, B, X, Z, LA
- \*[24] q, y, C, E, N, Q, S, AA, CA, HA, NA, XA
- \*[25] r, z, D, F, P, R, T, BA, DA-GA, IA, OA
- \*[26] b, d, f, h, k, m, p, r, t, v, x, z, B, D, F, H, K, M, P, R, T, U, X, Z, BA, DA-GA, IA, KA, LA, OA, QA, SA, UA, WA
- \*[27] s, u, w, y, A, C, E, G, J, L, Q, S, V, W, Y, AA, CA, JA, KA, LA, MA, NA, PA, QA, RA, TA, VA, XA
- \*[28] t, v, x, z, B, D, F, H, K, M, R, TU, X, Z, BA, DA-GA, OA, SA, UA, WA

**BOEING**   
**COMMERCIAL JET**  
**OVERHAUL MANUAL**

Reference Designation Index (See Schematic Diagram)		
Reference Designation	Part Number	Item No.
D200P	67-907	37A
D1294	67-907	37A
D1404P	67-907	37A
L20	A366-1	129
	10-60153-16	129
L21	42355-7-387	1
	42355-8-387	1
	42355-19-337	1
	42355-20-387	1
	10-0040-1	1
L31	10-0050-17	39
	10-0050-20	39
	10-0050-21	39
L32	10-0050-17	39
	10-0050-20	39
L32	10-0050-21	39
L33	10-0050-17	39
	10-0050-20	39
	10-0050-213239	39
L495	A366-1	129
L495	10-60153-16	129
L496	10-0040-1	1
L497	10-0050-17	39
L498	10-0050-17	39
L499	10-0050-17	39
L507	42355-3-387	1A
	42355-4-387	1A
L524	A366-1	129
	10-60153-16	129
L525	10-0040-1	1
L526	10-0050-37	39
	10-0050-38	39
L527	10-0050-37	39
	10-0050-38	39
L528	10-0050-37	39
L528	10-0050-38	39
L529	42355-3-387	1A
	42355-4-387	1A
M68	V5C134	44
	V5C115	44

**BOEING**   
**COMMERCIAL JET**  
**OVERHAUL MANUAL**

65-45260

Reference Designation Index (See Schematic Diagram)		
Reference Designation	Part Number	Item No.
S31	A20158CBL	40
	A20238BL	40
S323	A20158CBL	40
S369	A20158CBL	40
	A20238BL	40
T55	T57272	45
	24S48V	45
T210	MS25123-1-4	138
T257	MS25123-1-4	138
T267	MS25123-1-4	138

VENDORS

V01857 Trans-Lite Inc., P.O. Box 70, Milford, Connecticut 06460

V02217 Puritan-Zep Division of Puritan Equipment Inc., 111 Penn Street, El Segundo, California 90245

V02660 Bunker-Ramo Corp., The Amphenol Connector Division, 2801 South 25th Avenue, Broadview, Illinois 60153

V16827 Puritan Equipment Inc., 10800 Pflumm Road, Lenexa, Kansas 66211

V17744 Luminator Inc., 1200 East Dallas North Parkway, Plano, Texas 75074

V21868 H.K. Porter Co., Inc., Thermoid Division, Government Sales Office, 601 Grant Street, Pittsburg, Pennsylvania 15219

V72914 Grimes Manufacturing Co., 515 North Russell, Urbana, Ohio 43078

V80331 Utah-American Corp., 1125 East Franklin Street, Huntington, Indiana 46750

V81640 Controls Co. of America, Control Switch Division, 1420 Delmar Drive, Folcroft, Pennsylvania 19032

V81646 Ideal Corp., 435 Liberty Avenue, Brooklyn, New York 11207

V82240 Simmons Fastener Corp., 1761 North Broadway, Albany, New York 12204

V83014 Hartwell Corp., 9035 Venice Boulevard, Los Angeles, California 90034

V96256 Thordarson-Meissner Inc., Electronic Center, Mt. Carmel, Illinois 62863

V97393 Shur-Lok Corp., 1300 E. Normandy Place, P.O. Box 10728, Santa Ana, California 92711

**BOEING**   
**COMMERCIAL JET**  
**OVERHAUL MANUAL**

65-45260

Part No.	Fig. and Index No.	Qty. per Assy.	Part No.	Fig. and Index No.	Qty. per Assy.
AD604-3	1101-9	1	BAC27DPA122	59	1
AN380-2-1		AR	BAC27DPA622	59	1
AN960D10L		AR	BE406-3	9	1
AN960D4		AR	B1900-334	127	1
AN960D6		AR	B1900-514	111	
AN960D6L		AR	HSP147-2	97	1
AN960D8		AR	H701-1	95	1
AN960D8L		AR			
AN960PD10		AR	LT3/4	53	1
A20158CBL	40	1	L16999-10	55	1
A20238BL	40	1	L16999-13	54	2
A366-1	129	1	L16999-14	55	1
A366-3	129	1	L16999-9	54	2
BACC10DK14	49	1	MS17821-1-9		AR
BACC10DK6	35	4	MS20253-2-740		AR
BACM10N00-2S	149	1	MS20341-6A		AR
BACN10FX1	150	1	MS20392-1C19		AR
BACN10FX61	23	2	MS20392-1C63		AR
BACN10FX61	84	6	MS20426D4		AR
BACN10FX61	141	4	MS20659-26		AR
BACN10FX61	151	12	MS21208C0615		AR
BACN10FX82	50	1	MS24665-130		AR
BACN10FX82	117	1	MS24665-132		AR
BACN10FX84	50	1	MS25123-1-4		AR
BACN10FX84	117	1	MS27212-1-4		AR
BACN10JCO4	5	3	MS35333-39		AR
BACN10JCO4	10	2	MS35335-2		AR
BACN10JCO6	24	2	MS35335-30		AR
BACN10JCO6	72	2	NAS1368N4A		AR
BACN10JCO6	124	2	NAS42DD3-112		AR
BACN10JCO8	65	4	NAS43DD3-11		AR
BACN10JCO8	77	4	NAS514P632-6		AR
BACN10JC3	98	2	NAS549-4		AR
BACN10JR3	117	1	NAS549MH10		AR
BACR15BA4D	109	2	NAS557-8B		AR
BACR15DA5-4	113	4	NAS600-4		AR
BACR16DA5-4	135	4	NAS600-4P		AR
BACS12CB3-16	91	1	NAS600-7		AR
BACS12CB3-36	32	1			
BAC27DPA109	59	1			



**BOEING**  
  
**COMMERCIAL JET**  
**OVERHAUL MANUAL**

65-45260

Part No.	Fig. and Index No.	Qty. per Assy.	Part No.	Fig. and Index No.	Qty. per Assy.
NAS600-7P	1101-	AR	10-0050-38	39	3
NAS601-4		AR	10-0050-41	39	3
NAS601-4P		AR	10-0050-42	39	3
NAS601-5		AR	10-0050-43	39	3
NAS601-5P		AR	10-0050-44	39	3
NAS601-6		AR	10-0050-51	39	3
NAS601-6P		AR	10-0050-52	39	3
NAS601-7		AR	10-0050-55	39	3
NAS601-7P		AR	10-0050-56	39	3
NAS602-16		AR	10-0050-57	39	3
NAS602-16P		AR	10-0050-58	39	3
NAS602-6		AR	10-60153-16	129	1
NAS602-6P		AR	10-60174-26	29	1
NAS602-7		AR	10-60174-9	29	1
NAS602-7P		AR	10-60914-37	39	3
NAS602-8		AR	10-60914-38	39	3
NAS602-8P		AR	10-60914-41	39	3
NAS603-18		AR	10-60914-42	39	3
NAS603-18P		AR	10-60914-43	39	3
NAS603-36		AR	10-60914-44	39	3
NAS603-36P		AR	10-61399-1	58	1
NAS679A04W		AR	10-61399-2	58	1
NAS679A06W		AR	104862-1	104	1
NAS679A08W		AR	104863-1	103	1
NAS679A3W		AR	104864	105	1
NAS680A3		AR	104865-1	100	2
NAS820-14S		AR	115010	58	1
			115011	58	1
SL421-3	93	1			
SPA-0632-S	71	2	2000-5	8	11
			24S48V	45	1
T-57272	45	1			
V5C115	44	1	42355-19-387	1	1
V5C134	44	1	42355-20-387	1	1
			42355-3-387	1A	1
			42355-4-387	1A	1
ZH680-30	29	1	42355-7-387	1	1
ZH833-26	29	1	42355-8-387	1	1
10-0040-1	1	1	61-30050-1	37	1
10-0050-17	39	3	61-30050-2	37	1
10-0050-20	39	3	61-30050-4	37	1
10-0050-21	39	3	61-30650-1	37	1
10-0050-37	39	3	61-30670-1	37	1

**BOEING**   
**COMMERCIAL JET**  
**OVERHAUL MANUAL**

Part No.	Fig. and Index No.	Qty. per Assy.	Part No.	Fig. and Index No.	Qty. per Assy.
6203	1101-8	1	65-45260-149	1101	
6203	20	2	65-45260-150	1101	
63-10191	132	1	65-45260-153	1101	
63-10191-1	133	1	65-45260-154	1101	
63-10191-2	134	1	65-45260-157	1101	
63-2638-1	114	2	65-45260-158	1101	
63-9446	14	1	65-45260-159	1101	
63-9929	52	1	65-45260-160	1101	
65-32229-1	30	1	65-45260-161	1101	
65-32229-2	30	1	65-45260-162	1101	
65-32229-3	18	1	65-45260-165	1101	
65-32229-4	18	1	65-45260-166	1101	
65-45260-1	2	1	65-45260-167	1101	
65-45260-101	1101		65-45260-168	1101	
65-45260-102	1101		65-45260-169	1101	
65-45260-103	1101		65-45260-170	1101	
65-45260-104	1101		65-45260-171	1101	
65-45260-105	1101		65-45260-172	1101	
65-45260-106	1101		65-45260-173	1101	
65-45260-11	2	1	65-45260-174	1101	
65-45260-117	1101		65-45260-175	1101	
65-45260-118	1101		65-45260-176	1101	
65-45260-119	1101		65-45260-177	1101	
65-45260-12	2	1	65-45260-178	1101	
65-45260-120	1101		65-45260-179	1101	
65-45260-123	1101		65-45260-180	1101	
65-45260-124	1101		65-45260-181	1101	
65-45260-129	1101		65-45260-182	1101	
65-45260-13	2	1	65-45260-183	1101	
65-45260-130	1101		65-45260-184	1101	
65-45260-131	1101		65-45260-185	1101	
65-45260-132	1101		65-45260-186	1101	
65-45260-14	2	1	65-45260-187	1101	
65-45260-141	1101		65-45260-188	1101	
65-45260-142	1101		65-45260-189	1101	
65-45260-143	1101		65-45260-19	2	1
65-45260-144	1101		65-45260-190	1101	
65-45260-145	1101		65-45260-191	1101	
65-45260-146	1101		65-45260-192	1101	
65-45260-147	1101		65-45260-193	1101	
65-45260-148	1101		65-45260-194	1101	

**BOEING**   
**COMMERCIAL JET**  
**OVERHAUL MANUAL**

65-45260

Part No.	Fig. and Index No.	Qty. per Assy.
65-45260-195	1101-	
65-45260-196	1101	
65-45260-197	1101	
65-45260-198	1101	
65-45260-199	1101	
65-45260-2	2	1
65-45260-20	2	1
65-45260-200	1101	
65-45260-201	1101	
65-45260-202	1101	
65-45260-21	2	1
65-45260-22	2	1
65-45260-23	60	1
65-45260-24	60	1
65-45260-3	82	1
65-45260-33	2	1
65-45260-34	2	1
65-45260-35	2	1
65-45260-36	2	1
65-45260-37	2	1
65-45260-38	2	1
65-45260-39	2	1
65-45260-4	82	1
65-45260-40	2	1
65-45260-43	2	1
65-45260-44	2	1
65-45260-47	2	1
65-45260-48	2	1
65-45260-49	2	1
65-45260-5	2	1
65-45260-50	2	1
65-45260-51	2	1
65-45260-52	2	1
65-45260-55	2	1
65-45260-56	2	1
65-45260-57	82	1
65-45260-58	82	1
65-45260-59	2	1
65-45260-6	2	1
65-45260-60	2	1
65-45260-61	82	1
65-45260-62	82	1

Part No.	Fig. and Index No.	Qty. per Assy.
65-45260-64	2	1
65-45260-65	2	1
65-45260-66	2	1
65-45260-67	2	1
65-45260-68	2	1
65-45260-69	2	1
65-45260-7	76	1
65-45260-70	2	1
65-45260-71	2	1
65-45260-72	2	1
65-45260-73	2	1
65-45260-74	2	1
65-45260-75	2	1
65-45260-76	2	1
65-45260-77	2	1
65-45260-78	2	1
65-45260-79	2	1
65-45260-8	4	1
65-45260-80	2	1
65-45260-81	2	1
65-45260-82	2	1
65-45260-83	2	1
65-45260-84	2	1
65-45260-85	2	1
65-45260-86	2	1
65-45260-87	2	1
65-48566-27	27	1
65-51315-1	30	1
65-51315-2	30	1
65-51315-3	18	1
65-51315-4	18	1
65-52358-10	75	1
65-52358-11	75	1
65-52358-12	75	1
65-52358-15	64	1
65-52358-16	64	1
65-52358-19	70	1
65-52358-20	70	1
65-52358-3	60	1
65-52358-4	60	1
65-52358-5	60	1
65-52358-6	60	1

**BOEING**   
**COMMERCIAL JET**  
**OVERHAUL MANUAL**

Part No.	Fig. and Index No.	Qty. per Assy.	Part No.	Fig. and Index No.	Qty. per Assy.
65-52358-9	1101-75	1	66-22139-1	123	1
65-5382-31	75	1	66-22139-2	123	1
65-5382-32	75	1	66-22333-1	93	1
65-5382-33	64	1	66-26012-3	7	1
65-5382-34	64	1	66-4492-1	136	1
65-5382-47	60	1	66-4492-2	136	1
65-5382-48	60	1	67-907	37A	1
65-5382-49	60	1	69-24045	121	1
65-5382-50	60	1	69-33685-1	90	2
65-5382-7	70	1	69-33685-2	94	1
65-5382-9	70	1	69-33690-1	118	1
65-6374-11	152	1	69-33690-2	118	1
65-6374-12	152	1	69-33691-1	119	1
65-70773-10	39	3	69-33691-2	119	1
65-70773-13	39	3	69-42655-1	68	1
65-70773-14	39	3	69-42655-2	68	1
65-71061-151	3	1	69-42655-3	69	1
65-71061-17	122	1	69-42655-4	69	1
65-71061-21	86	1	69-42827-3	16	1
65-71061-22	86	1	69-42827-1	13	1
65-71061-29	87	1	69-42827-2	17	1
65-71061-30	87	1	69-4855-1	51	1
65-72073-5	21	1	69-4855-2	51	1
66-10729-1	131	1	69-55038-1	130	1
66-10729-3	130	1	69-55038-2	131	1
66-10729-4	130	1	69-55039-1	132	1
66-11159-1	115	1	69-55898-1	38A	3
66-11159-2	115	1	69-56289-1	130	1
66-11159-3	116	1			
66-11159-4	116	1			
66-11160	108	1			
66-11160-1	112	1			
66-11160-2	128	AR			
66-11160-3	110	1			
66-11292-1	145	1			
66-11292-2	145	1			
66-11292-3	147	1			
66-11292-4	147	1			
66-11773-1	74	2			
66-22138-1	120	1			
66-22138-2	120	1			