

BOEING 
COMMERCIAL JET
OVERHAUL MANUAL

PARTIAL SECTIONS PASSENGER SERVICE UNIT ASSEMBLY

25-20-11

BOEING P/N 65-82721-1 thru -8, -19, -23 thru -30, -37 thru -40, -45 thru -54,
-67 thru -72, -75, -77 thru -79

AIRLINE P/N

THE FOLLOWING DIRECTIVES APPLY TO THIS SUBJECT:

BOEING SERVICE BULLETIN	BOEING TEMPORARY REVISION	OTHER DIRECTIVES	DATE DIRECTIVE INCORPORATED INTO TEXT
		PRR 32106	Dec 10/71
		PRR 32106-1	Dec 10/71
		PRR 23495	May 10/72
		PRR 32146	May 10/72
		MC 5034-1R	May 10/72
		MC 5078-R	May 10/72
		MC 5078-2R	May 10/72
		PRR 17795	Sep 10/72
		PRR 23530	Sep 10/72
		PRR 23554	Sep 10/72
		PRR 32177	Sep 10/72
		PRR 32205	Sep 10/72
		MC 2033-20K	Feb 10/73
		MC 5034-20R	Feb 10/73
			Oct 5/74

| SB 3090(707)

BOEING 
COMMERCIAL JET
OVERHAUL MANUAL

LIST OF EFFECTIVE PAGES					
* Indicates pages revised, added or deleted in latest revision					
F Indicates foldout pages - print one side only					
PAGE	DATE	PAGE	DATE	PAGE	DATE
25-20-11					
T-1	Oct 5/74				
T-2	BLANK				
* LEP-1	Dec 25/75				
LEP-2	BLANK				
T/C-1	Oct 5/74				
T/C-2	BLANK				
* 401	Dec 25/75				
402	BLANK				
1101	Feb 10/73				
1102	Feb 10/73				
1103	Feb 10/73				
1104	Feb 10/73				
1105	Feb 10/73				
1106	Feb 10/73				
1106A	BLANK				
1106B	Feb 10/73				
1107	Sep 10/72				
1108	Oct 5/74				
1109	Feb 10/73				
1110	Feb 10/73				
1111	Feb 10/73				
1112	Feb 10/73				
1113	Feb 10/73				
1114	Feb 10/73				
1115	Feb 10/73				
1116	Feb 10/73				
1116A	Oct 5/74				
1116B	Oct 5/74				
1117	BLANK				
1118	Jun 25/73				
1119	Sep 10/72				
1120	Feb 10/73				
1121	Feb 10/73				
1122	Sep 10/72				

BOEING 
COMMERCIAL JET
OVERHAUL MANUAL

TABLE OF CONTENTS

<u>Paragraph Title</u>	<u>Page</u>
Description and Operation	*
Disassembly	*
Cleaning.	*
Inspection/Check.	*
Repair.	401
Assembly.	*
Fits and Clearances (not applicable)	
Testing	*
Trouble Shooting.	*
Storage Instructions.	*
Special Tools, Fixtures, and Equipment (not applicable)	
Illustrated Parts List.	1101

*This manual contains only refinish information and illustrated parts list.
 All other approved procedures for this unit are in 25-20-00, Passenger
 Service Unit Overhaul Procedures.

BOEING 
COMMERCIAL JET
OVERHAUL MANUAL

REPAIR

1. Refinish (Fig. 1101)

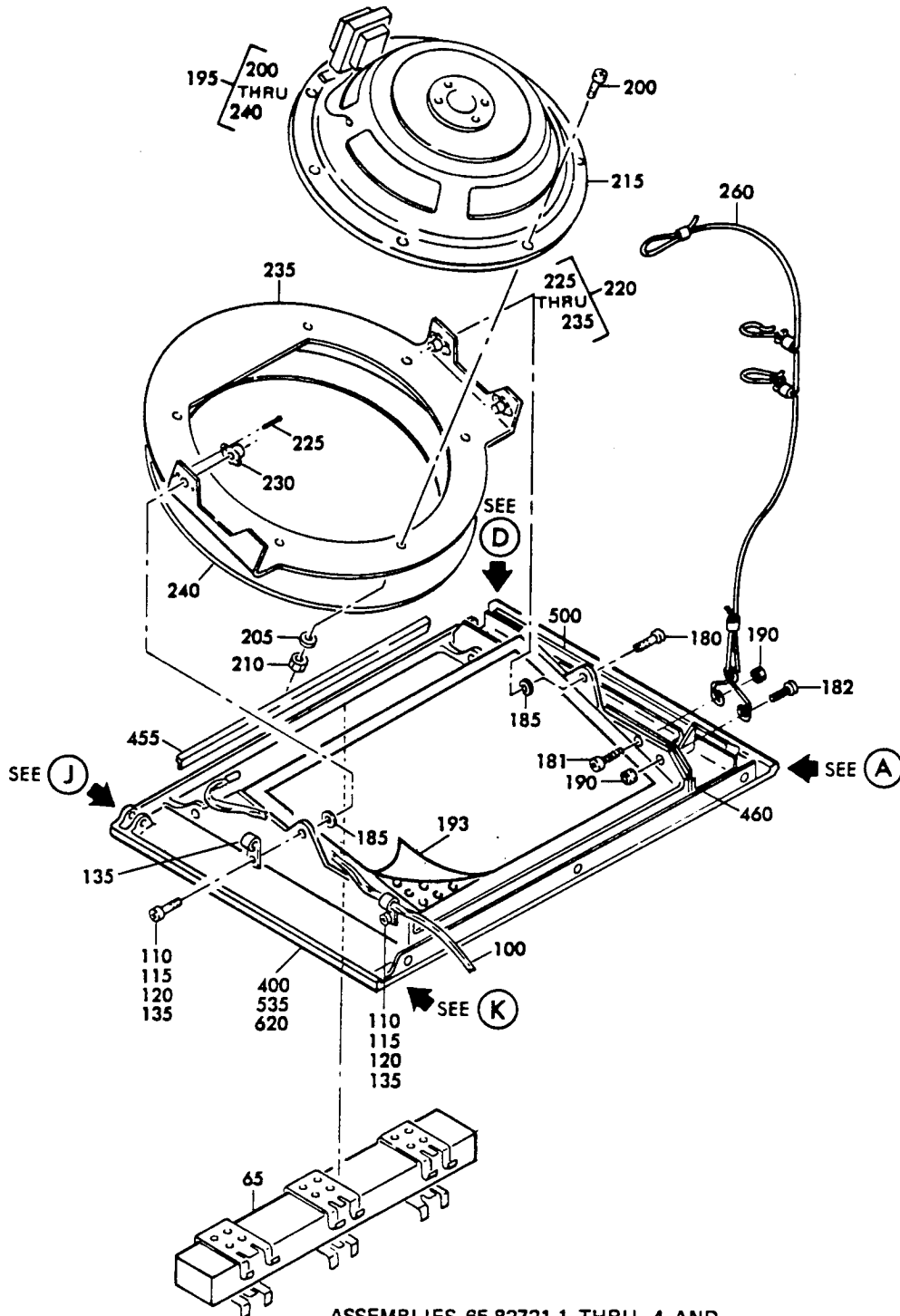
CAUTION: THE USE OF HI-SPEED LACQUER TO REFINISH POLYCARBONATE PLASTIC PARTS WILL CAUSE INSTANT DETERIORATION THAT MAY OR MAY NOT BE VISUALLY DETECTABLE.

NOTE: Refer to 20-30-02 for stripping of protective finishes, and to 20-41-01 for explanation of F and SRF finish codes.

- A. Pin (265) -- Cadmium plate per 20-42-05, type 2, class 2 (F-1.20) all over. Material: Steel, AMS 1095, heat-treated to C40-C50.
- B. Channels (495, 500) -- Alodize or chromic acid anodize (Ref 20-43-01) and apply one coat BMS 10-11, type 1 primer (SRF-2.30) except omit finish over bonded area. Material: Al alloy.
- C. Spring (595) -- Cadmium plate per 20-42-05, type 2, class 2 all over. Material: Steel music wire.
- D. Heat shield (320) -- Apply two coats hi-speed semigloss lacquer, BAC711 white (F-14.904-711) all over. Material: Al alloy.
- E. Ring assembly (220), stiffener (455, 65-70161-151) and brackets (475, 480, 485, 490) -- Alodize or chromic acid anodize (Ref 20-43-01) and apply one coat BMS 10-11, type 1 primer (SRF-2.30) all over. Material: Al alloy.

BOEING
COMMERCIAL JET
OVERHAUL MANUAL

ILLUSTRATED PARTS LIST

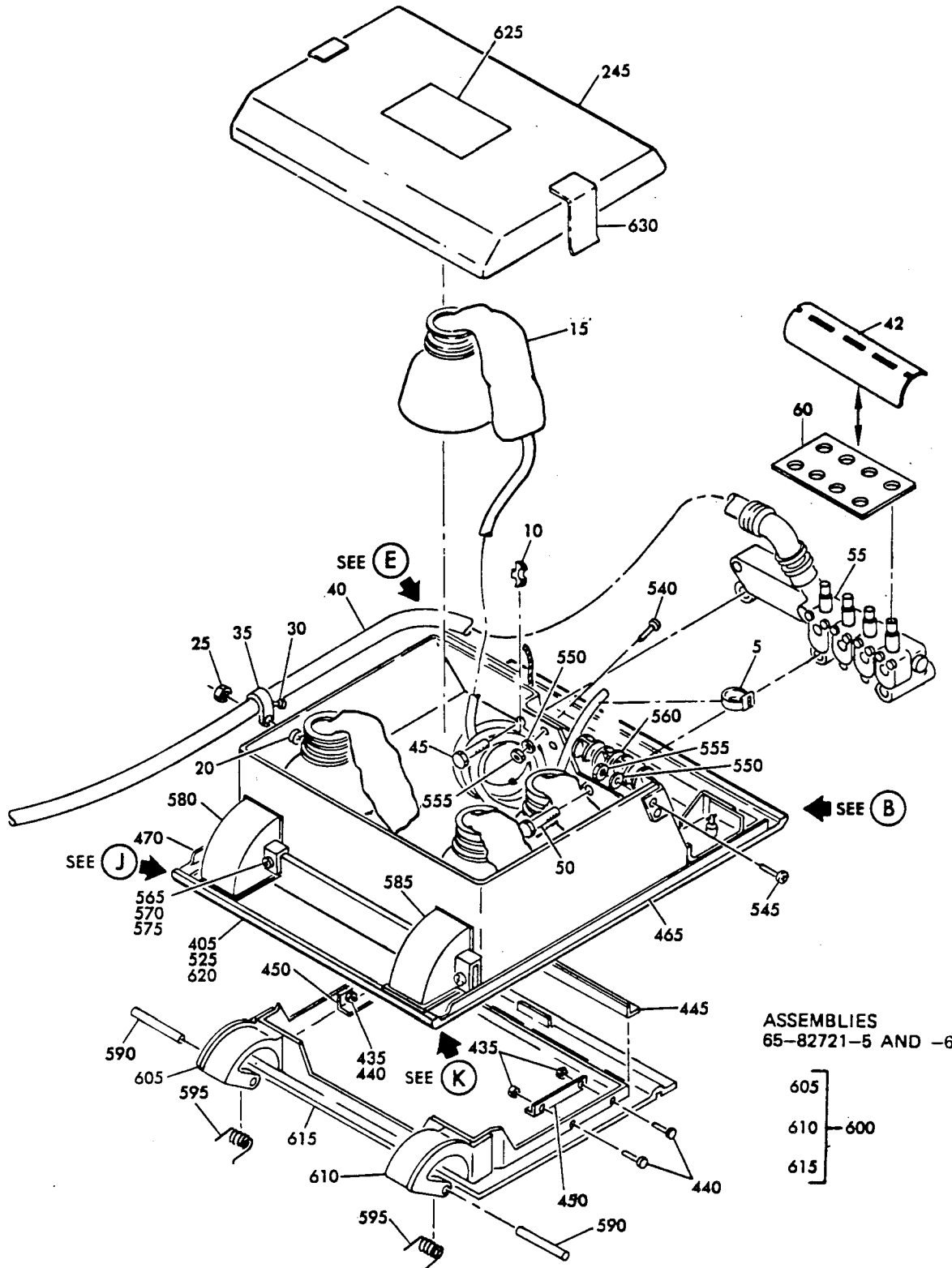


ASSEMBLIES 65-82721-1 THRU -4 AND
 -23 THRU -26, -38, -47 THRU -50, -67
 THRU -70, AND -77

Partial Sections Passenger Service Unit Assembly
 Figure 1101 (Sheet 1)

BOEING 
COMMERCIAL JET
OVERHAUL MANUAL

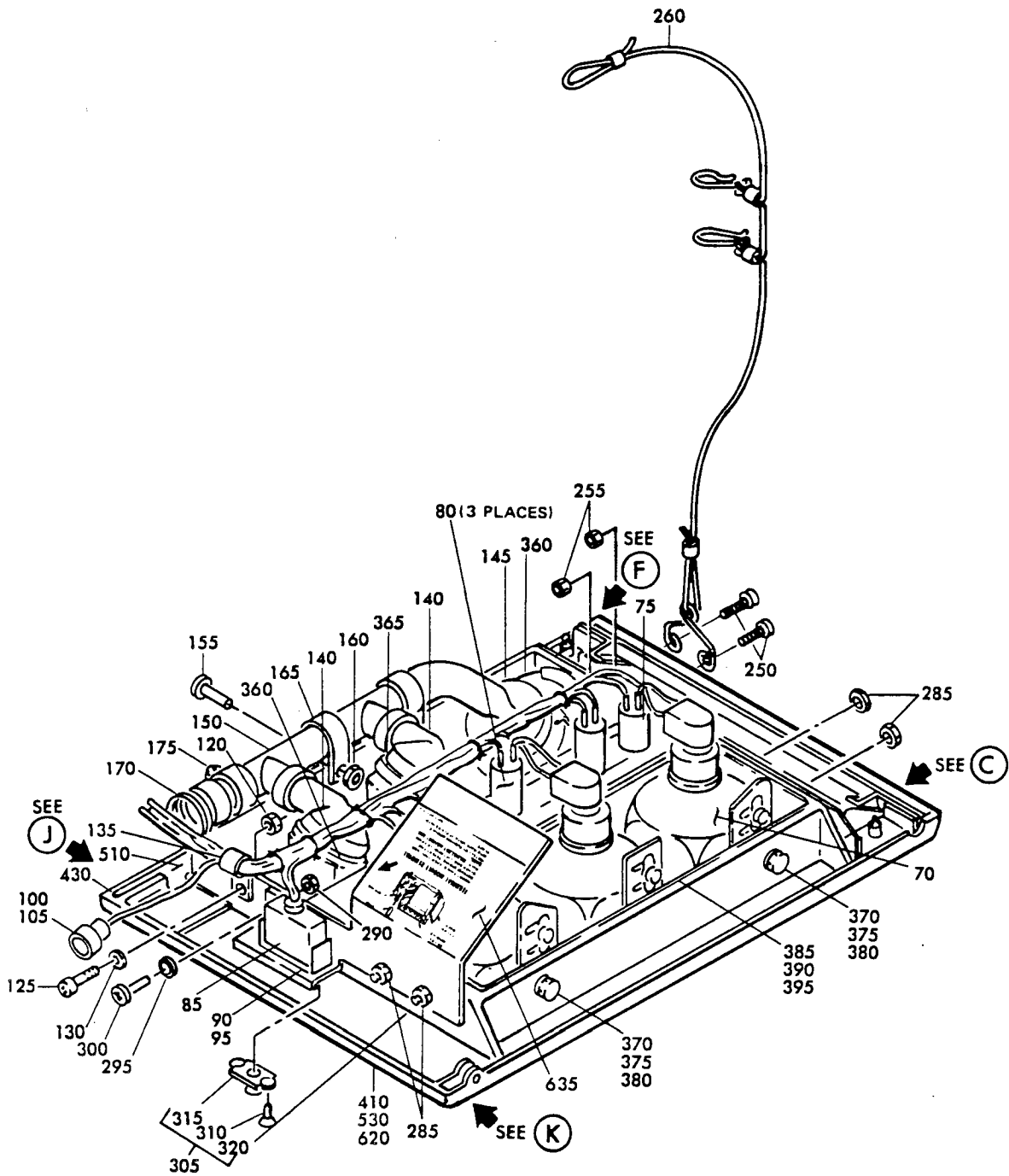
65-82721



ASSEMBLIES 65-82721-5, -8, -19, -27, -28, -37, -39, -51, -52, -71, -72, AND -78

Partial Sections Passenger Service Unit Assembly
 Figure 1-01 (Sheet 2)

BOEING 
COMMERCIAL JET
OVERHAUL MANUAL

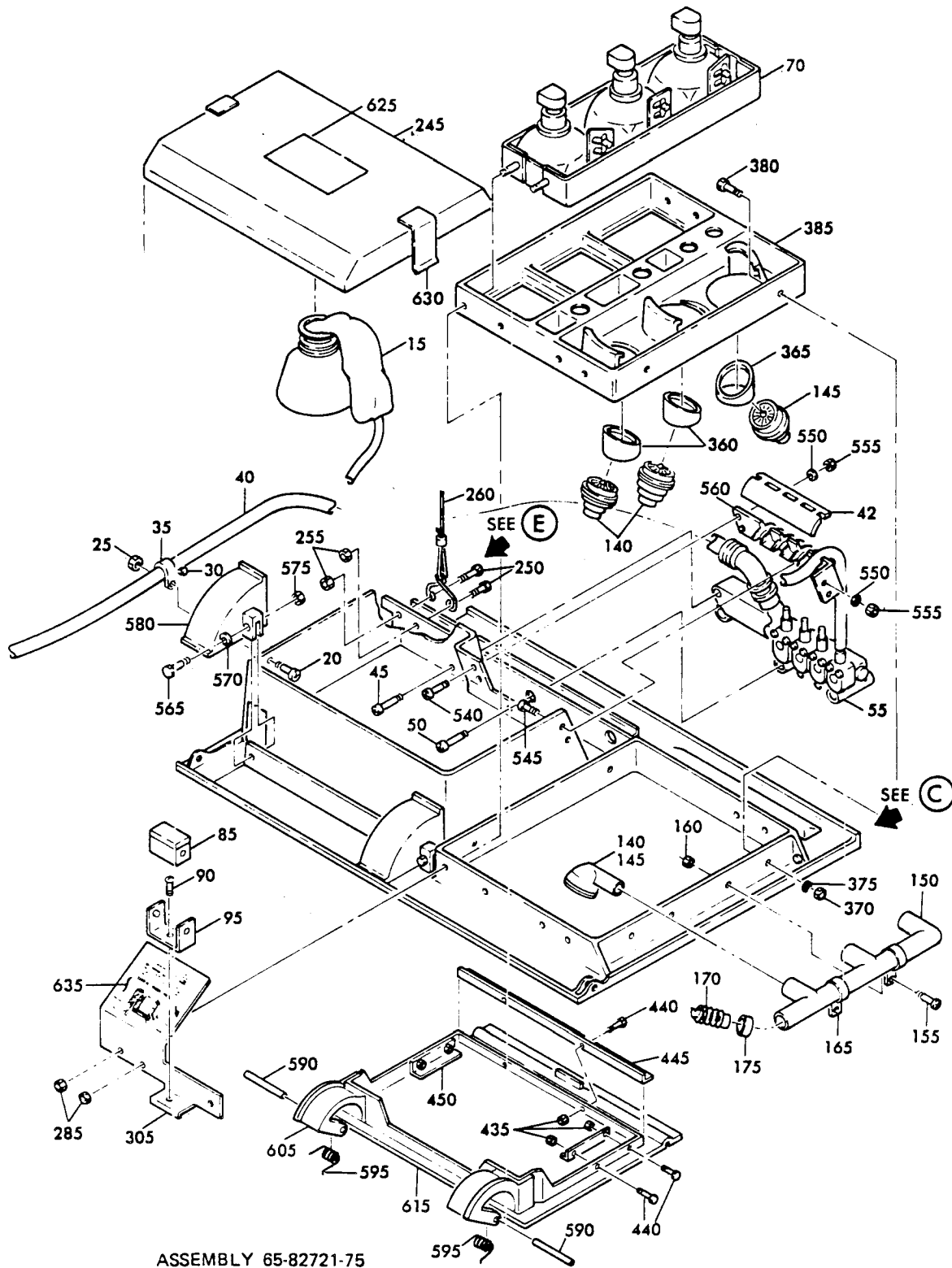


ASSEMBLIES 65-82721-7, -8, -29, -30,
 -40, -45, -46, -53, -54, AND -79

Partial Sections Passenger Service Unit Assembly
 Figure 1101 (Sheet 3)

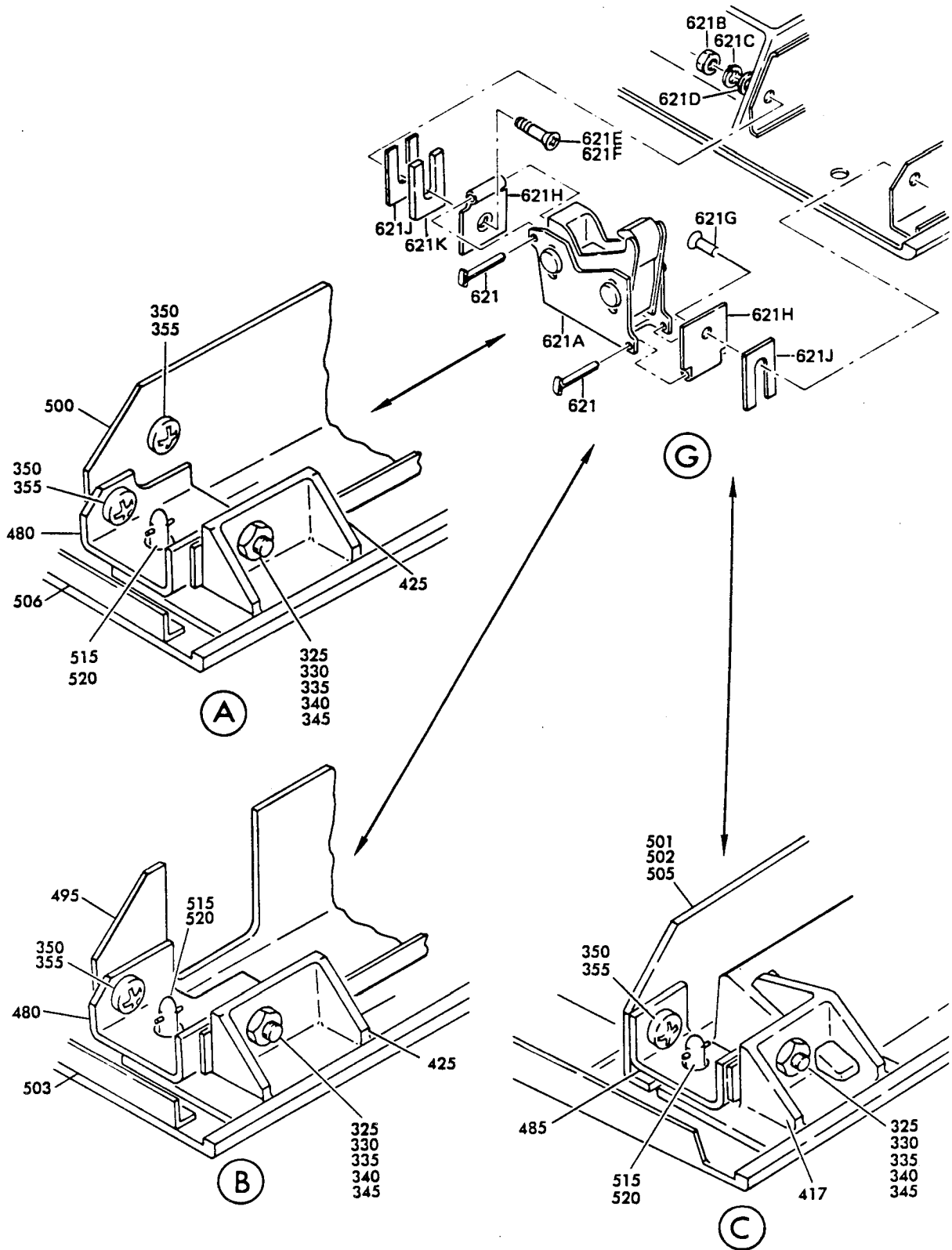
BOEING
COMMERCIAL JET
OVERHAUL MANUAL

65-82721

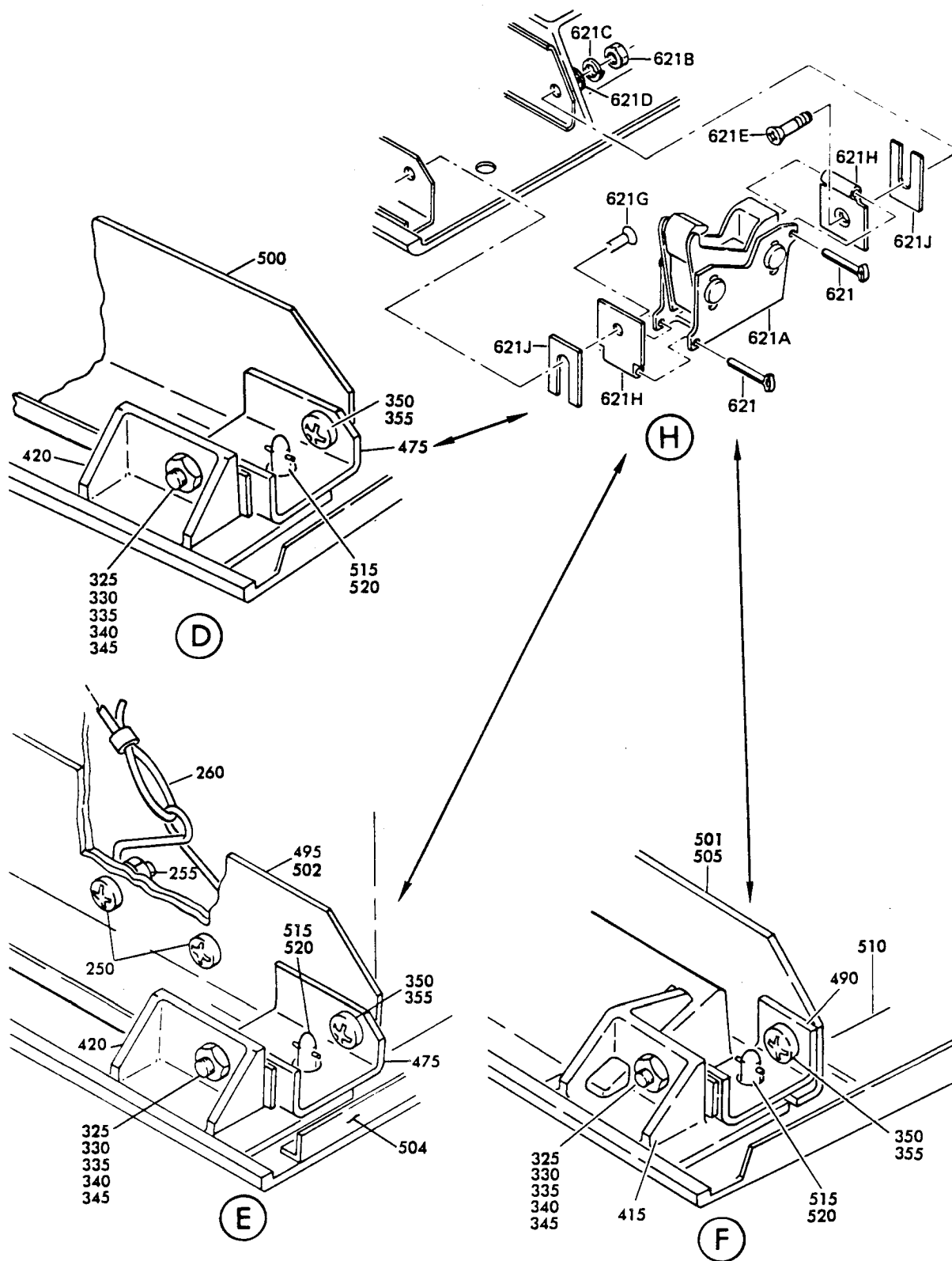


Partial Sections Passenger Service Unit Assembly
 Figure 1101 (Sheet 4)

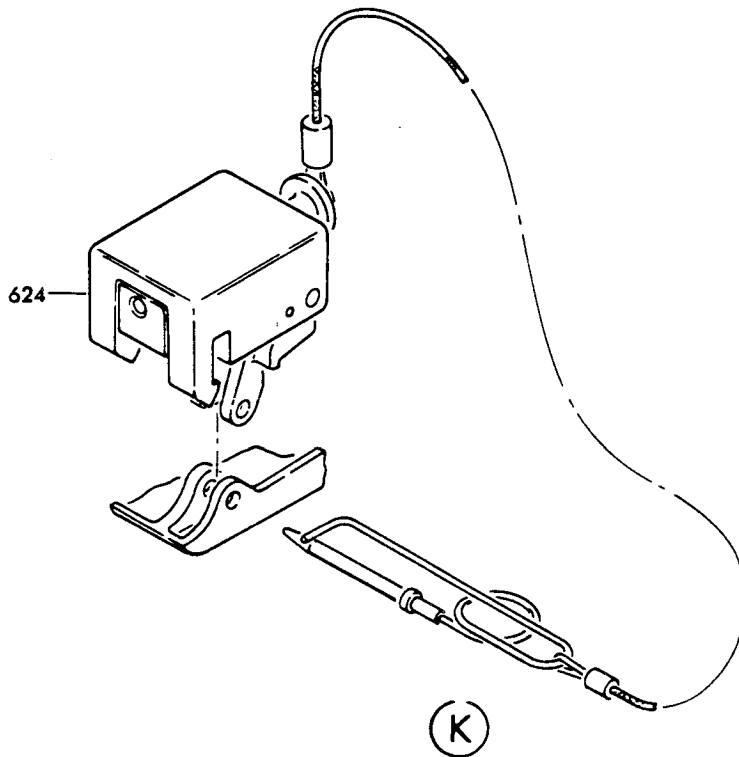
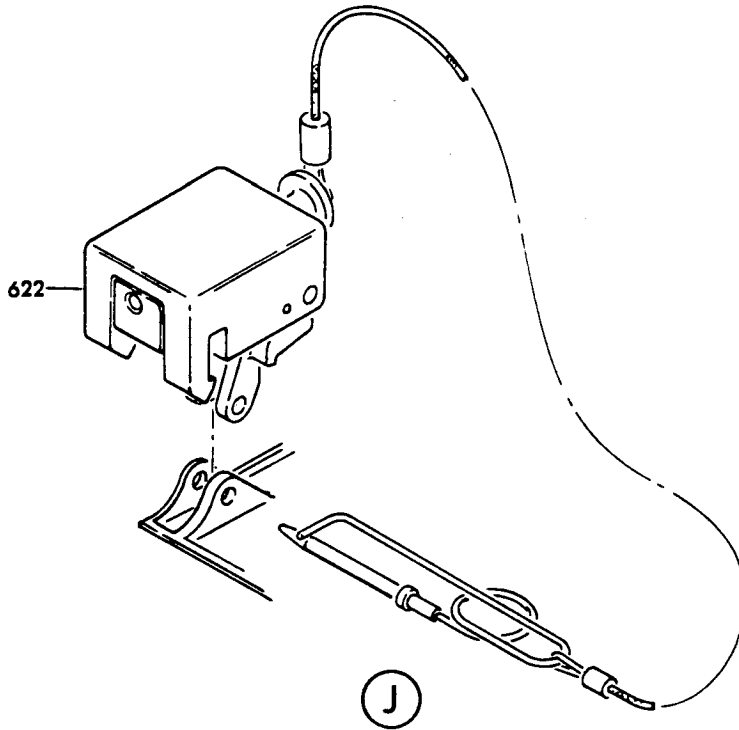
BOEING 
COMMERCIAL JET
OVERHAUL MANUAL



Partial Sections Passenger Service Unit Assembly
 Figure 1101 (Sheet 5)



Partial Sections Passenger Service Unit Assembly
 Figure 1101 (Sheet 6)



BOEING 
COMMERCIAL JET
OVERHAUL MANUAL

FIG. & ITEM NO.	PART NO.	AIRLINE PART NUMBER	N O M E N C L A T U R E							USE CODE	QTY PER ASSY
			1	2	3	4	5	6	7		
1101	65-82721-1		PARTIAL SECTIONS PASSENGER SERVICE UNIT ASSY (FWD SECTION)							A	REF
	65-82721-2		PARTIAL SECTIONS PASSENGER SERVICE UNIT ASSY (FWD SECTION)							B	REF
	65-82721-3		PARTIAL SECTIONS PASSENGER SERVICE UNIT ASSY (FWD SECTION)							C	REF
	65-82721-4		PARTIAL SECTIONS PASSENGER SERVICE UNIT ASSY (FWD SECTION)							D	REF
	65-82721-5		PARTIAL SECTIONS PASSENGER SERVICE UNIT ASSY (MIDDLE SECTION)							E	REF
	65-82721-6		PARTIAL SECTIONS PASSENGER SERVICE UNIT ASSY (MIDDLE SECTION)							F	REF
	65-82721-7		PARTIAL SECTIONS PASSENGER SERVICE UNIT ASSY (AFT SECTION)							G	REF
	65-82721-8		PARTIAL SECTIONS PASSENGER SERVICE UNIT ASSY (AFT SECTION)							H	REF
	65-82721-19		PARTIAL SECTIONS PASSENGER SERVICE UNIT ASSY (MIDDLE SECTION)							I	REF
	65-82721-23		PARTIAL SECTIONS PASSENGER SERVICE UNIT ASSY (FWD SECTION)							J	REF
	65-82721-24		PARTIAL SECTIONS PASSENGER SERVICE UNIT ASSY (FWD SECTION)							K	REF
	65-82721-25		PARTIAL SECTIONS PASSENGER SERVICE UNIT ASSY (FWD SECTION)							L	REF
	65-82721-26		PARTIAL SECTIONS PASSENGER SERVICE UNIT ASSY (FWD SECTION)							M	REF
	65-82721-27		PARTIAL SECTIONS PASSENGER SERVICE UNIT ASSY (MIDDLE SECTION)							N	REF
	65-82721-28		PARTIAL SECTIONS PASSENGER SERVICE UNIT ASSY (MIDDLE SECTION)							O	REF
	65-82721-29		PARTIAL SECTIONS PASSENGER SERVICE UNIT ASSY (AFT SECTION)							P	REF
	65-82721-30		PARTIAL SECTIONS PASSENGER SERVICE UNIT ASSY (AFT SECTION)							Q	REF
	65-82721-37		PARTIAL SECTIONS PASSENGER SERVICE UNIT ASSY (MIDDLE SECTION)							R	REF
	65-82721-38		PARTIAL SECTIONS PASSENGER SERVICE UNIT ASSY (FWD SECTION)							S	REF
	65-82721-39		PARTIAL SECTIONS PASSENGER SERVICE UNIT ASSY (MIDDLE SECTION)							T	REF

BOEING 
COMMERCIAL JET
OVERHAUL MANUAL

65-82721

FIG. & ITEM NO.	PART NO.	AIRLINE PART NUMBER	N O M E N C L A T U R E							USE CODE	QTY REF ASSY	
			1	2	3	4	5	6	7			
1101	65-82721-40									PARTIAL SECTIONS PASSENGER SERVICE UNIT ASSY (AFT SECTION)	U	REF
	65-82721-45									PARTIAL SECTIONS PASSENGER SERVICE UNIT ASSY (AFT SECTION)	V	REF
	65-82721-46									PARTIAL SECTIONS PASSENGER SERVICE UNIT ASSY (AFT SECTION)	W	REF
	65-82721-47									PARTIAL SECTIONS PASSENGER SERVICE UNIT ASSY (FWD SECTION)	X	REF
	65-82721-48									PARTIAL SECTIONS PASSENGER SERVICE UNIT ASSY (FWD SECTION)	Y	REF
	65-82721-49									PARTIAL SECTIONS PASSENGER SERVICE UNIT ASSY (FWD SECTION)	Z	REF
	65-82721-50									PARTIAL SECTIONS PASSENGER SERVICE UNIT ASSY (FWD SECTION)	AA	REF
	65-82721-51									PARTIAL SECTIONS PASSENGER SERVICE UNIT ASSY (MIDDLE SECTION)	BA	REF
	65-82721-52									PARTIAL SECTIONS PASSENGER SERVICE UNIT ASSY (MIDDLE SECTION)	CA	REF
	65-82721-53									PARTIAL SECTIONS PASSENGER SERVICE UNIT ASSY (AFT SECTION)	DA	REF
	65-82721-54									PARTIAL SECTIONS PASSENGER SERVICE UNIT ASSY (AFT SECTION)	EA	REF
	65-82721-67									PARTIAL SECTIONS PASSENGER SERVICE UNIT ASSY (FWD SECTION)	FA	REF
	65-82721-68									PARTIAL SECTIONS PASSENGER SERVICE UNIT ASSY (FWD SECTION)	GA	REF
	65-82721-69									PARTIAL SECTIONS PASSENGER SERVICE UNIT ASSY (FWD SECTION)	HA	REF
	65-82721-70									PARTIAL SECTIONS PASSENGER SERVICE UNIT ASSY (FWD SECTION)	IA	REF
	65-82721-71									PARTIAL SECTIONS PASSENGER SERVICE UNIT ASSY (MIDDLE SECTION)	JA	REF
	65-82721-72									PARTIAL SECTIONS PASSENGER SERVICE UNIT ASSY (MIDDLE SECTION)	KA	REF
	65-82721-75									PARTIAL SECTIONS PASSENGER SERVICE UNIT ASSY	LA	REF
	65-82721-77									PARTIAL SECTIONS PASSENGER SERVICE UNIT ASSY (FWD SECTION)(SB 3090)	MA	REF
	65-82721-78									PARTIAL SECTIONS PASSENGER SERVICE UNIT ASSY (MIDDLE SECTION)(SB 3090)	NA	REF
	65-82721-79									PARTIAL SECTIONS PASSENGER SERVICE UNIT ASSY (AFT SECTION)(SB 3090)	OA	REF

BOEING 
COMMERCIAL JET
OVERHAUL MANUAL

FIG. & ITEM NO.	PART NO.	AIRLINE PART NUMBER	N O M E N C L A T U R E							USE CODE	QTY PER ASSY
			1	2	3	4	5	6	7		
1101											
5	MS3367-1-9										
10	63-10155										
15	289-701-27										
20	NAS602-8P										
25	BACNLOFX83										
30	BACP20BA1										
35	BACC10DK7										
40	ZH833-39										
40	ZH833-40										
42	69-64747-1										
45	NAS603-20P										
50	NAS603-22P										
55	115013-01										
55	115013-02										
55	115013-03										
60	69-62463-1										
65	10-0040-1										
65	10-0040-1										
65	10-0040-101										
70	10-0429-1										
70	10-0429-2										
75	700827-13A1-1										
75	710906-13A1										

BOEING 
COMMERCIAL JET
OVERHAUL MANUAL

FIG. & ITEM NO.	PART NO.	AIRLINE PART NUMBER	N O M E N C L A T U R E							USE CODE	QTY PER ASSY
			1	2	3	4	5	6	7		
1101 193	65-82721-73		.	T	A	P	E			SZ,AA HA,IA MA	1
195	69-61466-4		.	S	P	E	A	A	S	*[7]	1
200	NAS514P1032-8		.	.	S	C	R	E	W		7
205	AN960C10L		.	.	W	A	S	H	E		7
210	BACN10JC3		.	.	N	U	T				7
215	C8TSC8800		.	.	S	P	E	A	K	E	1
220	69-62320-1		.	.	R	I	N	G	A	S	1
225	MS20426D3-2		.	.	R	I	V	E	T		8
230	NAS1068A08		.	.	N	U	T	P	L	A	4
235	69-62320-2		.	.	R	I	N	G	A	S	1
240	69-61466-3		.	.	T	A	P	E	A	S	1
245	65-80172-3		.	C	O	V	E	R	A	S	1
										EINR BA,LA	
245	65-80172-4		.	C	O	V	E	R	A	S	1
245	65-80172-7		.	C	O	V	E	R	A	S	1
										FO,CA T,JA, NA	
245	65-80172-8		.	C	O	V	E	R	A	S	1
250	NAS602-5P		.	S	C	R	E	W		KA	2
255	BACN10JC-08		.	N	U	T				*[5]	2
260	69-63824-1		.	L	A	N	Y	A	R	D	2
260	69-61465-3		.	D	E	L	E	T	E		1
265	63-9446		.	.	D	E	L	E	T	E	
270	BACT12AC53		.	.	D	E	L	E	T	E	
275	69-61465-2		.	.	D	E	L	E	T	E	
280	BACS13S261C		.	.	D	E	L	E	T	E	
285	BACN10JC08		.	N	U	T				*[6]	4
290	BACN10JC06		.	N	U	T				*[6]	1
295	AN960PD6L		.	W	A	S	H	E	R		1
300	NAS601-8P		.	S	C	R	E	W		*[6]	1
305	69-61460-6		.	S	H	I	E	L	D	A	1
										GPUVW DA	
305	69-61460-7		.	S	H	I	E	L	D	A	1
										HQ EA,LA	
310	MS20426D2		.	R	I	V	E	T			2
315	NAS1068A06		.	N	U	T	P	L	A	T	1
320	69-61460-3		.	H	E	A	T	S	H	I	1
320	69-61460-4		.	H	E	A	T	S	H	I	1
325	NAS514P832-7		.	S	C	R	E	W			2
330	MS35338-42		.	W	A	S	H	E	R		2

BOEING 
COMMERCIAL JET
OVERHAUL MANUAL

65-82721

FIG. & ITEM NO.	PART NO.	AIRLINE PART NUMBER	N O M E N C L A T U R E							USE CODE	QTY PER ASSY
			1	2	3	4	5	6	7		
1101											
335	BACS40RO6D06F										AR
340	NAS43DD3-8										2
345	MS35649-282										2
350	NAS602-5P										2
355	BACN10JC08										2
360	65-79165-31									*[6]	2
365	65-79165-32									*[6]	1
370	BACN10JC08									*[6]	4
375	AN960PD8L									*[6]	4
380	NAS514P832-5P									*[6]	4
385	65-79165-5										1
									GPUV		
									DA,OA		
385	65-79165-6								HQW		1
									EA,LA		
390	65-79165-23										1
395	65-79165-7										1
									GPUV		
									DA		
395	65-79165-8								HQW		1
									EA,LA		
400	65-82721-9									AC	1
400	65-82721-10									BD	1
400	65-82721-31									JL	1
400	65-82721-31									AC	1
400	65-82721-32									KM	1
400	65-82721-32									BD	1
400	65-82721-43									S	1
400	65-82721-55									FA,HA	1
400	65-82721-55									AC	1
400	65-82721-56									GA,IA	1
400	65-82721-56									BD	1
400	65-82721-61									XZ	1
400	65-82721-62									Y,AA	1
400	65-82721-80									MA	1
405	65-82721-11									EIR	1
405	65-82721-11									EI	1
405	65-82721-12									F	1
405	65-82721-33									N	1
405	65-82721-33									E	1
405	65-82721-34									O	1
405	65-82721-34									F	1
405	65-82721-42									T	1

BOEING 
COMMERCIAL JET
OVERHAUL MANUAL

FIG. & ITEM NO.	PART NO.	AIRLINE PART NUMBER	N O M E N C L A T U R E							USE CODE	QTY PER ASSY
			1	2	3	4	5	6	7		
1101											
405	65-82721-57									JA	1
405	65-82721-57									EI	1
405	65-82721-58									KA	1
405	65-82721-58									F	1
405	65-82721-63									BA	1
405	65-82721-64									CA	1
405	65-82721-76									LA	1
405	65-82721-81									NA	1
410	65-82721-13									G	1
410	65-82721-14									H	1
410	65-82721-35									P	1
410	65-82721-35									G	1
410	65-82721-36									Q	1
410	65-82721-36									H	1
410	65-82721-41									U	1
410	65-82721-59									V	1
410	65-82721-59									G	1
410	65-82721-60									W	1
410	65-82721-60									H	1
410	65-82721-65									DA	1
410	65-82721-66									EA	1
410	65-82721-76									LA	1
410	65-82721-82									OA	1
415	65-79165-33										
415	65-79165-34										
417	65-79165-33										
417	65-79165-34										
420	65-79165-35									*[9]	1
420	65-79165-36									*[10]	1
425	65-79165-36									*[9]	1
425	65-79165-35									*[10]	1
430	65-80173-21									PU	1
430	65-80173-21									G	1
430	65-80173-22									Q	1
430	65-80173-22									H	1
430	65-80173-31									G	1
430	65-80173-31									V	1
430	65-80173-32									H	1
430	65-80173-32									W	1
430	65-80173-41									X	1
430	65-80173-42									Y	1

BOEING 
COMMERCIAL JET
OVERHAUL MANUAL

65-82721

FIG. & ITEM NO.	PART NO.	AIRLINE PART NUMBER	N O M E N C L A T U R E							USE CODE	QTY PER ASSY
			1	2	3	4	5	6	7		
1101											
430	65-80173-43		. .	EXTENSION						DA	1
430	65-80173-44		. .	EXTENSION						EA	1
435	BACN10JC04		. .	NUT						*[5]	6
440	BACS12CB04-3		. .	SCREW						*[5]	6
445	66-25423-1		. .	STIFFENER, Angle						*[5]	1
450	66-25423-2		. .	STIFFENER, Angle						EFIRT BA,CA JA-LA	2
450	66-25423-4		. .	STIFFENER						NO	2
455	65-71061-151		. .	STIFFENER, Angle (preferred)						*[4]	1
455	66-25423-3		. .	STIFFENER, Angle (optional)						*[4]	1
460	69-63901-1		. .	DELETED							
460	69-63901-2		. .	DELETED							
460	69-61464-1		. .	DELETED							
460	69-61464-2		. .	DELETED							
465	69-63901-3		. .	ANGLE						ACEFI JLNOR Z,BA CA,FA HA,JA KA	1
465	69-61464-3		. .	DELETED							
470	69-61464-4		. .	DELETED							
470	69-63901-4		. .	ANGLE						BDEFI KMORY AA-CA GA, IA-LA	1
475	69-61468-5		. .	BRACKET, Retaining						ACJLX Z, FA, HA, LA	1
475	69-61468-6		. .	BRACKET, Retaining						BDKMY AA,GA IA	1
475	69-61468-5		. .	DELETED							
475	69-61468-6		. .	DELETED							
475	65-82721-16		. .	BRACKET, Mount *[1]						EF	1
475	65-32721-16		. .	BRACKET, Mount						INOR FA, JA-LA	1

BOEING 
COMMERCIAL JET
OVERHAUL MANUAL

FIG. & ITEM NO.	PART NO.	AIRLINE PART NUMBER	N O M E N C L A T U R E							USE CODE	QTY PER ASSY
			1	2	3	4	5	6	7		
1101 480	69-61468-6		.	.	BRACKET, Retaining					ACJLX Z, FA HA, LA	1
480	69-61468-5		.	.	BRACKET, Retaining					BDKMY AA, GA IA	1
480	69-61468-6		.	.	DELETED						
480	69-61468-5		.	.	DELETED						
480	65-82721-17		.	.	BRACKET, Mount *[1]					EI	1
480	65-82721-18		.	.	BRACKET, Mount *[1]					F	1
480	65-82721-17		.	.	BRACKET, Mount					NR	1
480	65-82721-18		.	.	BRACKET, Mount					BA, JA O	1
485	69-61468-7		.	.	BRACKET					*[6]	2
490	69-61468-8		.	.	DELETED						
495	69-63528-1		.	.	CHANNEL					EINR BA, JA LA	1
495	69-63528-2		.	.	CHANNEL					FO CA, KA	1
495	69-61459-9		.	.	CHANNEL					T	1
497	69-64358-2		.	.	ANGLE					T	1
498	69-64358-4		.	.	CHANNEL *[2]					S, MA	1
500	69-63528-3		.	.	CHANNEL					ABCD J-MX- AA FA-IA	1
500	69-61459-10		.	.	CHANNEL					S, MA	1
501	69-61459-11		.	.	PLATE					U	1
502	69-61459-12		.	.	CHANNEL					LA	1
503	69-64748-1		.	.	ANGLE					T	1
504	69-64748-2		.	.	ANGLE					T	1
505	69-63528-4		.	.	PLATE					GHPQV W, DA EA	1
506	69-64748-3		.	.	ANGLE					S, MA	1
510	69-63528-5		.	.	SUPPORT					GHPQ	1
510	69-63528-6		.	.	SUPPORT					GHUVW DA, EA	1
515	82-19-180-16		.	.	STUD, 1/4 turn, V94222 *[1]					A-IR	2
515	82-19-200-16		.	.	STUD *[1]					J-Q V-LA	2

BOEING 
COMMERCIAL JET
OVERHAUL MANUAL

65-82721

FIG. & ITEM NO.	PART NO.	AIRLINE PART NUMBER	N O M E N C L A T U R E							USE CODE	QTY PER ASSY
			1	2	3	4	5	6	7		
1101 515	AN525-10R7		.	.	SCREW	*	[1]			A-RV- KA	1
520	82-46-101-39		.	.	WASHER, V94222					J-Q	2
525	65-80173-9		.	.	SHELL ASSY, Middle					NR	1
525	65-80173-9		.	.	SHELL ASSY, Middle	*	[1]			EI	1
525	65-80173-10		.	.	SHELL ASSY, Middle					O	1
525	65-80173-10		.	.	SHELL ASSY, Middle	*	[1]			F	1
525	65-80173-33		.	.	SHELL ASSY, Middle					T,JA NA	1
525	65-80173-33		.	.	SHELL ASSY, Middle	*	[1]			EI	1
525	65-80173-34		.	.	SHELL ASSY, Middle					KA	1
525	65-80173-34		.	.	SHELL ASSY, Middle	*	[1]			F	1
525	65-80173-45		.	.	SHELL ASSY, Middle					BA	1
525	65-80173-46		.	.	SHELL ASSY, Middle					CA	1
530	65-80173-13		.	.	SHELL ASSY, Aft					PU,OA	1
530	65-80173-13		.	.	SHELL ASSY, Aft	*	[1]			G	1
530	65-80173-14		.	.	SHELL ASSY, Aft					Q	1
530	65-80173-14		.	.	SHELL ASSY, Aft	*	[1]			H	1
530	65-80173-35		.	.	SHELL ASSY, Aft					DA	1
530	65-80173-36		.	.	SHELL ASSY, Aft					EA	1
535	65-80173-19		.	.	SHELL ASSY, Fwd					JLS MA	1
535	65-80173-19		.	.	SHELL ASSY, Fwd	*	[1]			AC	1
535	65-80173-20		.	.	SHELL ASSY, Fwd					KM	1
535	65-80173-20		.	.	SHELL ASSY, Fwd	*	[1]			ED	1
535	65-80173-23		.	.	SHELL ASSY, Aft					V	1
535	65-80173-23		.	.	SHELL ASSY, Aft	*	[1]			G	1
535	65-80173-24		.	.	SHELL ASSY, Aft					W	1
535	65-80173-24		.	.	SHELL ASSY, Aft	*	[1]			H	1
535	65-80173-27		.	.	SHELL ASSY					LA	1
535	65-80173-29		.	.	SHELL ASSY, Fwd					FA,HA	1
535	65-80173-29		.	.	SHELL ASSY, Fwd	*	[1]			AC	1
535	65-80173-30		.	.	SHELL ASSY, Fwd					GA,IA	1
535	65-80173-30		.	.	SHELL ASSY, Fwd	*	[1]			BD	1
540	NAS514P632-6		.	.	SCREW					*[5]	2
545	NAS601-5P		.	.	SCREW					*[5]	2
550	NAS620-6L		.	.	WASHER					*[5]	4
555	BACN10JC06		.	.	NUT					*[5]	4
560	65-79165-21		.	.	GUIDE, Oxy tube					EINRT BA,JA LA,NA	1

BOEING
COMMERCIAL JET
OVERHAUL MANUAL

FIG. & ITEM NO.	PART NO.	AIRLINE PART NUMBER	N O M E N C L A T U R E							USE CODE	QTY PER ASSY
			1	2	3	4	5	6	7		
1101 560	65-79165-22		.	.	.	GUIDE, Oxy tube				FO CA,KA	1
565	NAS601-9P		.	.	.	SCREW				*[5]	4
570	NAS620-6L		.	.	.	WASHER				*[5]	4
575	BACNLOJCO6		.	.	.	NUT				*[5]	4
580	65-79165-19		.	.	.	COVER, Hinge (used on 65-80173-9,-10,-45,-46)					1
580	65-79165-51		.	.	.	COVER, Hinge (used on 65-80173-33,-34)					1
585	65-79165-52		.	.	.	COVER, Hinge (used on 65-80173-33,-34)					1
585	65-79165-20		.	.	.	COVER, Hinge (used on 65-80173-9,-10,-45,-46)					1
590	MS20253-3-124		.	.	.	PIN				*[5]	2
595	69-61458-1		.	.	.	SPRING					2
600	65-79165-13		.	.	.	DOOR ASSY				RT BA,JA LA,NA CA,KA	1
600	65-79165-14		.	.	.	DOOR ASSY				CA,KA	1
605	65-79165-17		.	.	.	HINGE					1
610	65-79165-18		.	.	.	HINGE					1
615	65-79165-15		.	.	.	DOOR				GINRT BA,JA LA	1
615	65-79165-16		.	.	.	DOOR				FO CA,KA	1
620	65-79165-11		.	.	.	DELETED					
620	65-79165-12		.	.	.	DELETED					
621	66-25728-1		.	.	.	PIN (added by SB 3090)				MA-OA	4
621A	65-85901-2		.	.	.	LATCH, Inboard (added by SB 3090)				MA-OA	2
621B	MS35649-282		.	.	.	NUT (added by SB 3090)				MA-OA	2
621C	MS35338-42		.	.	.	WASHER (added by SB 3090)				MA-OA	2
621D	AN960PD8		.	.	.	WASHER (added by SB 3090)				MA-OA	2
621E	NAS514P832-8		.	.	.	SCREW (added by SB 3090)				NA	2
621E	NAS514P832-8		.	.	.	SCREW (added by SB 3090)				NA,OA	4
621F	NAS514P832-10		.	.	.	SCREW (added by SB 3090)				MA	2
621G	MS20426B6		.	.	.	RIVET (added by SB 3090)				MA-OA	2
621H	69-64895-1		.	.	.	SUPPORT, Latch (added by SB 3090)				MA-OA	4
621J	66-25727-1		.	.	.	SHIM (pref)(added by SB 3090)				MA	2
621J	BACS4ORD5CD6F		.	.	.	SPACER (opt)(added by SB 3090)				MA	2
621J	66-25727-1		.	.	.	SHIM (pref)(added by SB 3090)				NA,OA	4
621J	BACS4ORD5C06F		.	.	.	SPACER (opt)(added by SB 3090)				NA,OA	4

BOEING
COMMERCIAL JET
OVERHAUL MANUAL

65-82721

FIG. & ITEM NO.	PART NO.	AIRLINE PART NUMBER	N O M E N C L A T U R E							USE CODE	QTY PEP ASSY
			1	2	3	4	5	6	7		
1101											
621K	66-25727-2									MA	2
621K	BACS4ORD5E06F									MA	2
622	65-85900-1									MA-OA	1
624	65-85900-2									MA-OA	1
625	BAC27DPA343									*[11]	1
625	BAC27DPA344									*[12]	1
630	65-82721-15										1
635	BAC27DPA373									GPV	1
										DA,LA	
										OA	
635	BAC27DPA374									HQUW	1
										EA	

- *[1] Limited use
- *[2] Not illustrated
- *[3] Size to fit. Undersize 20, use BACCLODK(). Oversize 20, use BACCLOBH().
- *[4] (Forward sections) A-DJ-M SX-Z AA, FA-IA
- *[5] (Middle sections) EFINORT, BA, CA, JA-LA, NA
- *[6] (Aft sections) GHPQU-W, DA, EA, OA
- *[7] (Forward sections with speaker) ABJKXY, FA, GA
- *[8] (Forward sections without speaker) CDLMSZ, AA, HA, MA
- *[9] ACEJLNRXZ, BA, FA, HA, JA, UA
- *[10] BDFKMOY, AA, CA, GA, IA, KA, NA
- *[11] EFINORT, BA, CA, JA, KA, NA
- *[12] EFNO, BA, CA, JA, KA

BOEING 
COMMERCIAL JET
OVERHAUL MANUAL

65-82721

Reference Designation Index (See Schematic Diagram)		
Reference Designation	Part Number	Item No.
D3100	67-907	105
L3000	10-0429-1	70
L3001	10-0429-2	70
L3002	10-0040-1	65
M3001	69-61466-4	195
S3000	700827-13A1	75
S3000	710906-13A1	75
S3001-S3003	700827-13A2	80
S3001-S3003	710907-13A2	80
T3000	TR1E4	85

VENDORS

- | V02217 Puritan-Zep, Division of Puritan Equipment Inc., 111 Penn Street,
El Segundo, California 90245
- V05399 Bemco, Incorporated, P.O. Box 68, Centerton, Arkansas 72719
- | V16827 Puritan Equipment Incorporated, 10800 Pflumm Road, Lenexa, Kansas
66211
- V17744 Luminator Incorporated, 1200 East Dallas North Parkway, Plano, Texas
75075
- | V29587 Bunker-Ramo Corporation, The Amphenol Industrial Division, 1830 South
54th Avenue, Cicero, Illinois 60650
- V32001 Jensen Manufacturing Division, The Muter Company, 5655 West 73rd S
Street, Chicago, Illinois 60638
- V49367 Pyle and National Company, 1334 North Kostner Avenue, Chicago,
Illinois 60651
- V72914 Grimes Manufacturing Company, 515 North Russel, Urbana, Ohio 43078
- V81646 Ideal Corporation, 435 Liberty Avenue, Brooklyn, New York 11207
- V92114 Sierra Engineering Company, 123 East Montecito Avenue, Sierra Madre,
California 91204
- | V94222 Southco Incorporated, Lester Pa. 19113
- V97564 Clare-Pendar Incorporated, P.O. Box 785, Post Falls, Idaho 83854

BOEING 
COMMERCIAL JET
OVERHAUL MANUAL

Part No.	Fig. and Index No.	Qty. per Assy.
AD604-3	1101-170	1
AN525-10R7	515	2
AN960C10L		AR
AN960D6		AR
AN960D8		AR
AN960PD6L		AR
AN960PD8L		AR
BACCL0DK12	165	2
BACCL0DK7	35	1
BACCL0DK()	135	5
BACN10FX83	25	1
BACN10FX83	160	2
BACN10JC04	435	6
BACN10JC06	290	1
BACN10JC06	555	4
BACN10JC06	575	4
BACN10JC08	120	3
BACN10JC08	120	5
BACN10JC08	190	2
BACN10JC08	190	1
BACN10JC08	255	1
BACN10JC08	255	2
BACN10JC08	285	2
BACN10JC08	355	2
BACN10JC08	370	4
BACN10JC3	210	7
BACP20BA1	30	1
BACSL2CB04-3	440	6
BACSL2CB06-12	125	1
BACSL2CB08	110	4
BACS40R06D06F	335	AR
BAC27DPA343	625	1
BAC27DPA344	625	1
BAC27DPA373	635	1
BAC27DPA374	635	1
BE406-3	170	1
C8TSC8800	215	1

Part No.	Fig. and Index No.	Qty. per Assy.
L16999-15C	140	2
L20646-1C	145	1
MS17821-1-9		AR
MS20253-3-124		AR
MS20426D2		AR
MS20426D3-2		AR
MS3367-1-9		AR
MS35338-42		AR
MS35649-282		AR
NAS1068A06		AR
NAS1068A08		AR
NAS43DD3-8		AR
NAS514P1032-8		AR
NAS514P632-6		AR
NAS514P832-5P		AR
NAS514P832-7		AR
NAS549-8		AR
NAS601-3P		AR
NAS601-5P		AR
NAS601-8P		AR
NAS601-9P		AR
NAS602-4P		AR
NAS602-5P		AR
NAS602-6P		AR
NAS602-8P		AR
NAS603-20P		AR
NAS603-22P		AR
NAS620-6L		AR
TRLE4	85	1
T11AH	95	1
ZH833-39	40	1
ZH833-40	40	1
10-0040-1	65	1
10-0040-101	65	1

BOEING 
COMMERCIAL JET
OVERHAUL MANUAL

65-82721

Part No.	Fig. and Index No.	Qty. per Assy.	Part No.	Fig. and Index No.	Qty. per Assy.
10-0429-1	1101-70	1	65-79165-34	415	1
10-0429-2	70	1	65-79165-34	417	1
10-60137-49	15	4	65-79165-35	420	1
10-60141-18	140	2	65-79165-35	524	1
10-60141-19	145	1	65-79165-36	420	1
10-60174-39	40	1	65-79165-36	425	1
10-60174-40	40	1	65-79165-5	385	1
10-60513-7	55	1	65-79165-51	580	1
10-60513-8	55	1	65-79165-52	585	1
10-60513-9	55	1	65-79165-6	385	1
10-60781-1	65	1	65-79165-7	395	1
10-60781-101	65	1	65-79165-8	395	1
10-61779-1	70	1	65-80172-3	245	1
10-61779-2	70	1	65-80172-4	245	1
115013-01	55	1	65-80172-7	245	1
115013-02	55	1	65-80172-8	245	1
115013-03	55	1	65-80173-10	525	1
289-701-27	15	4	65-80173-13	530	1
61-23100-1	100	1	65-80173-14	530	1
61-23100-2	100	1	65-80173-19	535	1
6203	175	1	65-80173-20	535	1
63-10155	10	8	65-80173-21	430	1
65-71061-151	455	1	65-80173-22	430	1
65-79165-11	620	1	65-80173-23	535	1
65-79165-12	620	1	65-80173-24	535	1
65-79165-13	600	1	65-80173-27	535	1
65-79165-14	600	1	65-80173-29	535	1
65-79165-15	615	1	65-80173-30	535	1
65-79165-16	615	1	65-80173-31	430	1
65-79165-17	605	1	65-80173-32	430	1
65-79165-18	610	1	65-80173-33	525	1
65-79165-19	580	1	65-80173-34	525	1
65-79165-20	585	1	65-80173-35	530	1
65-79165-21	560	1	65-80173-36	530	1
65-79165-22	560	1	65-80173-41	430	1
65-79165-23	390	1	65-80173-42	430	1
65-79165-31	360	2	65-80173-43	430	1
65-79165-32	365	1	65-80173-44	430	1
65-79165-33	415	1	65-80173-9	525	1
65-79165-33	417	1	65-82721-1	1101	
			65-82721-10	400	1
			65-82721-11	405	1

BOEING 
COMMERCIAL JET
OVERHAUL MANUAL

Part No.	Fig. and Index No.	Qty. per Assy.	Part No.	Fig. and Index No.	Qty. per Assy.
65-82721-12	1101-405	1	65-82721-56	400	1
65-82721-13	410	1	65-82721-57	405	1
65-82721-14	410	1	65-82721-58	405	1
65-82721-15	630	1	65-82721-59	410	1
65-82721-16	475	1	65-82721-6	1101	
65-82721-17	480	1	65-82721-60	410	1
65-82721-18	480	1	65-82721-61	400	1
65-82721-19	1101		65-82721-62	400	1
65-82721-2	1101		65-82721-63	405	1
65-82721-23	1101		65-82721-64	405	1
65-82721-24	1101		65-82721-65	410	1
65-82721-25	1101		65-82721-66	410	1
65-82721-26	1101		65-82721-67	1101	
65-82721-27	1101		65-82721-68	1101	
65-82721-28	1101		65-82721-69	1101	
65-82721-29	1101		65-82721-7	1101	
65-82721-3	1101		65-82721-70	1101	
65-82721-30	1101		65-82721-71	1101	
65-82721-31	400	1	65-82721-72	1101	
65-82721-32	400	1	65-82721-73	193	1
65-82721-33	405	1	65-82721-75	1101	
65-82721-34	405	1	65-82721-76	405	1
65-82721-35	410	1	65-82721-76	410	1
65-82721-36	410	1	65-82721-77	1101	
65-82721-37	1101		65-82721-78	1101	
65-82721-38	1101		65-82721-79	1101	
65-82721-39	1101		65-82721-8	1101	
65-82721-4	1101		65-82721-80	400	1
65-82721-40	1101		65-82721-81	405	1
65-82721-41	410	1	65-82721-82	410	1
65-82721-42	405	1	65-82721-9	400	1
65-82721-43	400	1	66-25423-1	445	1
65-82721-45	1101		66-25423-2	450	2
65-82721-46	1101		66-25423-3	455	1
65-82721-47	1101		66-25423-4	450	2
65-82721-48	1101		67-907	105	1
65-82721-49	1101		69-61458-1	595	2
65-82721-5	1101		69-61459-10	500	1
65-82721-50	1101		69-61459-11	501	1
65-82721-51	1101		69-61459-12	502	1
65-82721-52	1101		69-61459-9	495	1
65-82721-53	1101		69-61460-3	320	1
65-82721-54	1101		69-61460-4	320	1
65-82721-55	400	1	69-61460-6	305	1

BOEING 
COMMERCIAL JET
OVERHAUL MANUAL

65-82721

Part No.	Fig. and Index No.	Qty. per Assy.
69-61460-7	1101-305	1
69-61464-1	460	1
69-61464-2	460	1
69-61464-3	465	1
69-61464-4	470	1
69-61465-3	260	1
69-61466-3	240	1
69-61466-4	195	1
69-61468-5	475	1
69-61468-5	480	1
69-61468-6	475	1
69-61468-6	480	1
69-61468-7	485	1
69-61468-8	490	1
69-62320-1	220	1
69-62320-2	235	1
69-62463-1	60	1
69-62660-2	150	1
69-63528-1	495	1
69-63528-2	495	1
69-63528-3	500	1
69-63528-4	505	1
69-63528-5	510	1
69-63528-6	510	1
69-63824-1	260	1
69-63901-1	460	1
69-63901-2	460	1
69-63901-3	465	1
69-63901-4	470	1
69-64358-2	497	1
69-64358-4	498	1
69-64747-1	43	1
69-64748-1	503	1
69-64748-2	504	1
69-64748-3	506	1
690623A1-4	76	1
691212-13A1-1	81	3

Part No.	Fig. and Index No.	Qty. per Assy.
700827-13A1-1	75	1
700827-13A2-1	80	3
710906-13A1	75	1
710907-13A2	80	3
82-19-180-16	515	2
82-19-200-16	515	2
82-46-101-39	520	2