



OVERHAUL MANUAL

TO: ALL HOLDERS OF PASSENGER SERVICE UNIT ASSEMBLY OVERHAUL MANUAL, 25-20-12

REVISION NO. 5, DATED JUN 5/87

HIGHLIGHTS

DESCRIPTION OF CHANGE	TOPICS AFFECTED												
	D & O	D / Assy	Cleaning	Insp / Chk	Repair	Assy	F / C	Test	T / Shooting	S / Tools	Storage	IPL	L / Overhaul
Changed part number in numerical index												X	

PASSENGER SERVICE UNIT ASSEMBLY

25-20-12

BOEING P/N 65-86413-1 thru -23, -28 thru -43, -45 thru -51, -53, -56,
-99, -100, -104, -106
65V10794-45

AIRLINE P/N

THE FOLLOWING DIRECTIVES APPLY TO THIS SUBJECT:

BOEING SERVICE BULLETIN	BOEING TEMPORARY REVISION	OTHER DIRECTIVES	DATE DIRECTIVE INCORPORATED INTO TEXT
		PRR 17799-4	Jan 15/73
		PRR 23556	Jan 15/73
		PRR 32207	Jan 15/73
		MC 2033-98K	Apr 15/73
		MC 2033-100K	Apr 15/73
		MC 2033-103K	Apr 15/73
		MC 2033-105K	Apr 15/73
		MC 5034-22R	Apr 15/73
		PRR 17809	Apr 15/73
		PRR 23584	Apr 15/73
		PRR 32284	Apr 15/73
		MC 5034-38R	Feb 10/74
		PRR 33140-7	Jan 5/83
25-1151		MC 3038-22K	Jul 5/83



OVERHAUL MANUAL

LIST OF EFFECTIVE PAGES

* Indicates pages revised, added or deleted in latest revision
F Indicates foldout pages - print one side only

PAGE	DATE	PAGE	DATE	PAGE	DATE
25-20-12					
T-1	Jul 5/83				
T-2	BLANK				
* LEP-1	Jun 5/87				
LEP-2	BLANK				
T/C-1	Feb 10/74				
T/C-2	BLANK				
401	Jan 5/83				
402	Jun 25/73				
1101	Jan 5/83				
1102	Jan 5/83				
1103	Jan 5/83				
1104	Jan 5/83				
1105	Jan 5/83				
1106	Jan 5/83				
1107	Jan 5/83				
1108	Jan 5/83				
1109	Jan 5/83				
1110	Jul 5/83				
1111	Jan 5/83				
1112	Jan 5/83				
1113	Jan 5/83				
1114	Jan 5/83				
* 1115	Jun 5/87				
1116	BLANK				

BOEING 
COMMERCIAL JET
OVERHAUL MANUAL

TABLE OF CONTENTS

<u>Paragraph Title</u>	<u>Page</u>
Description and Operation	*[1]
Disassembly	*[1]
Cleaning.	*[1]
Inspection/Check.	*[1]
Repair.	401
Assembly.	*[1]
Fits and Clearances (not required)	
Testing	*[1]
Trouble Shooting.	*[1]
Storage Instructions.	*[1]
Special Tools, Fixtures, and Equipment (not required)	
Illustrated Parts List.	1101

*[1] This manual contains only refinish information and illustrated parts list. All other approved procedures for this unit are in 25-20-00, Passenger Service Unit Overhaul Procedures.



OVERHAUL MANUAL

REPAIR

1. Refinish (Fig. 1101)

CAUTION: DO NOT USE HI-SPEED LACQUER TO REFINISH POLYCARBONATE PLASTIC PARTS. IT WILL CAUSE INSTANT DETERIORATION THAT MAY NOT BE DETECTABLE VISUALLY.

NOTE: Refer to 20-30-02 for stripping of protective finishes, and to 20-41-01 for explanation of F and SRF finish codes.

- A. Ring assembly (33) -- Alodize or chromic acid anodize (Ref 20-43-01) and apply one coat BMS 10-11, type 1 primer (SRF-2.30) all over. Material: Al alloy.
- B. Heat shield assembly (252) -- Apply two coats hi-speed semigloss lacquer, BAC711 white (SRF-14.904-711) all over. Material: Al alloy.

2. Replacement

- A. Replace tape (39) if required. For tape trim on units having speaker assemblies (28) installed, see Fig. 401.

(1) Paint speaker grille face after tape is applied, per applicable color code to cover tape adhesive exposed through speaker grille holes.

- B. If pull streamer (130) needs to be replaced, attach new streamer with string (132) such that streamer drops 10 to 14 inches below bottom of mask (129).

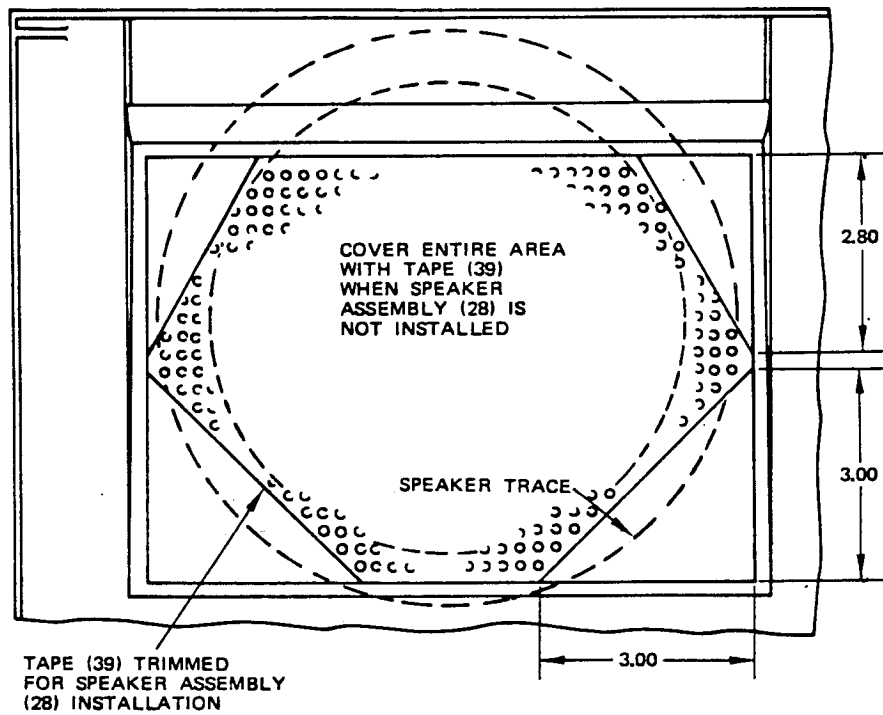
3. Materials

NOTE: Use listed material or equivalent substitute.

- A. Tape (39) -- 3-inch wide P32 Vinyl Tape (white), Permacel Division, Johnson and Johnson, Inc., U.S. Highway 1, New Brunswick, New Jersey 08901
- B. Lacquer, special hi-speed semigloss (Ref 20-60-02)

BOEING 
COMMERCIAL JET
OVERHAUL MANUAL

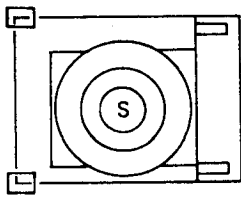
65-86413



ALL DIMENSIONS ARE IN INCHES

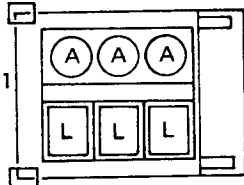
Tape Application
Figure 401

OVERHAUL MANUAL
ILLUSTRATED PARTS LIST



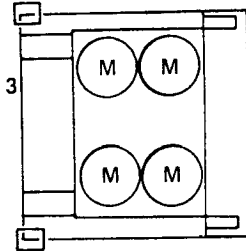
SEE VIEW 1

65-85413-17, -18 WITH SPEAKER
65-86413-19, -20 WITHOUT
SPEAKER



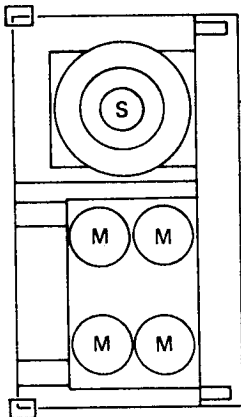
SEE VIEW 3

65B86413-15, -16,
-30, -41, -42, -99,
-100, -104, -106



SEE VIEW 2

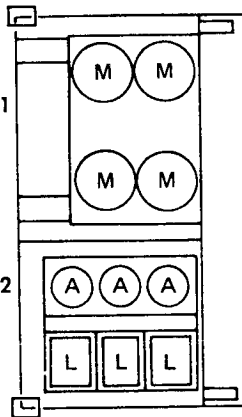
65-86413-21, -22, -51



SEE VIEW 1

SEE VIEW 2

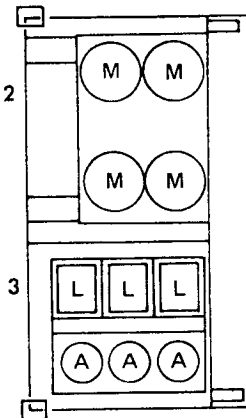
65-86413-9, -10, -28, -47,
-48, -50 WITH SPEAKER
65-86413-11, -12, -49 WITHOUT
SPEAKER



SEE VIEW 2

SEE VIEW 3

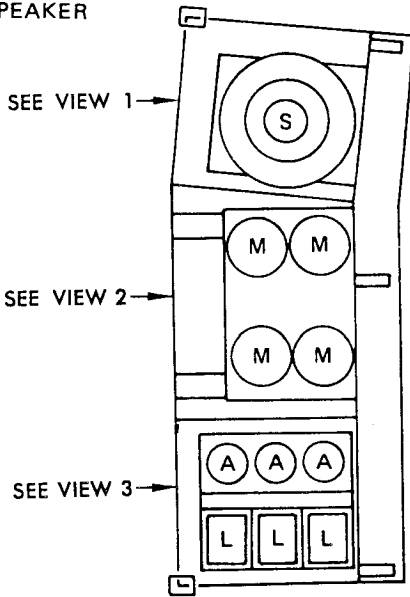
65-86413-13, -14, -29
-39, -40, -45, -46
65V10794-45



SEE VIEW 2

SEE VIEW 3

65-86413-23



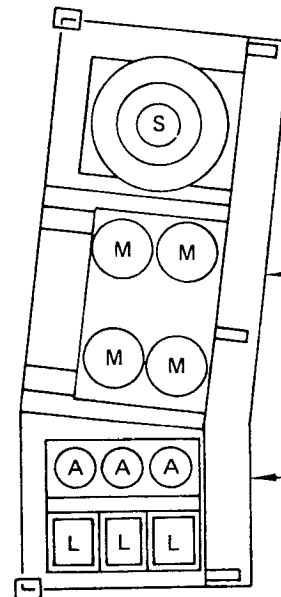
SEE VIEW 1

SEE VIEW 2

SEE VIEW 3

65-86413-5, -6, -35, -36, -53 WITH SPEAKER
65-86413-7, -8, -37, -38, -56 WITHOUT
SPEAKER

A = AIR OUTLET
L = LIGHT
M = MASK
S = SPEAKER



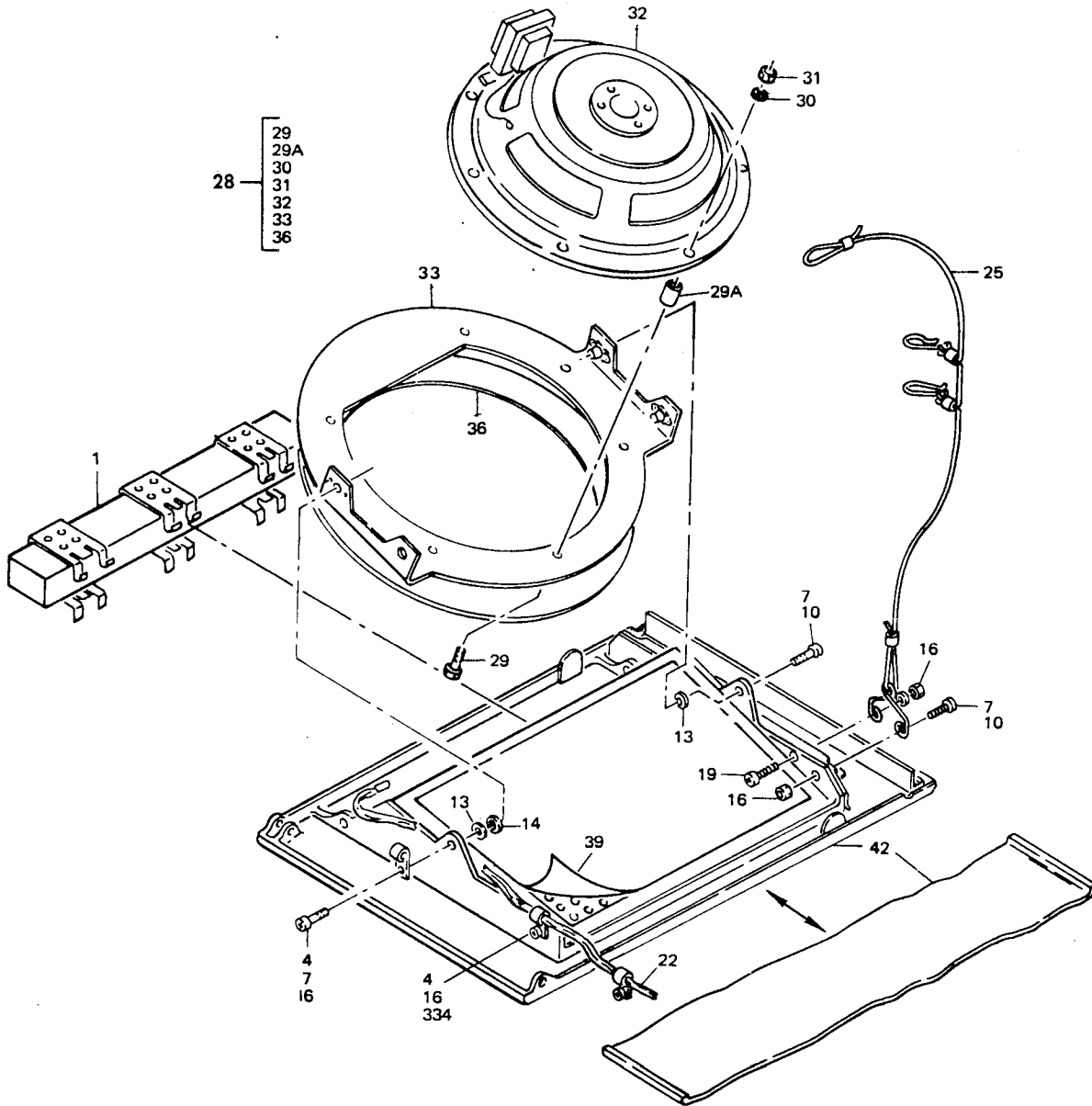
SEE VIEW 1

SEE VIEW 2

SEE VIEW 3

65-86413-1, -2, -31, -32, -43 WITH SPEAKER
65-86413-3, -4, -33, -34 WITHOUT
SPEAKER

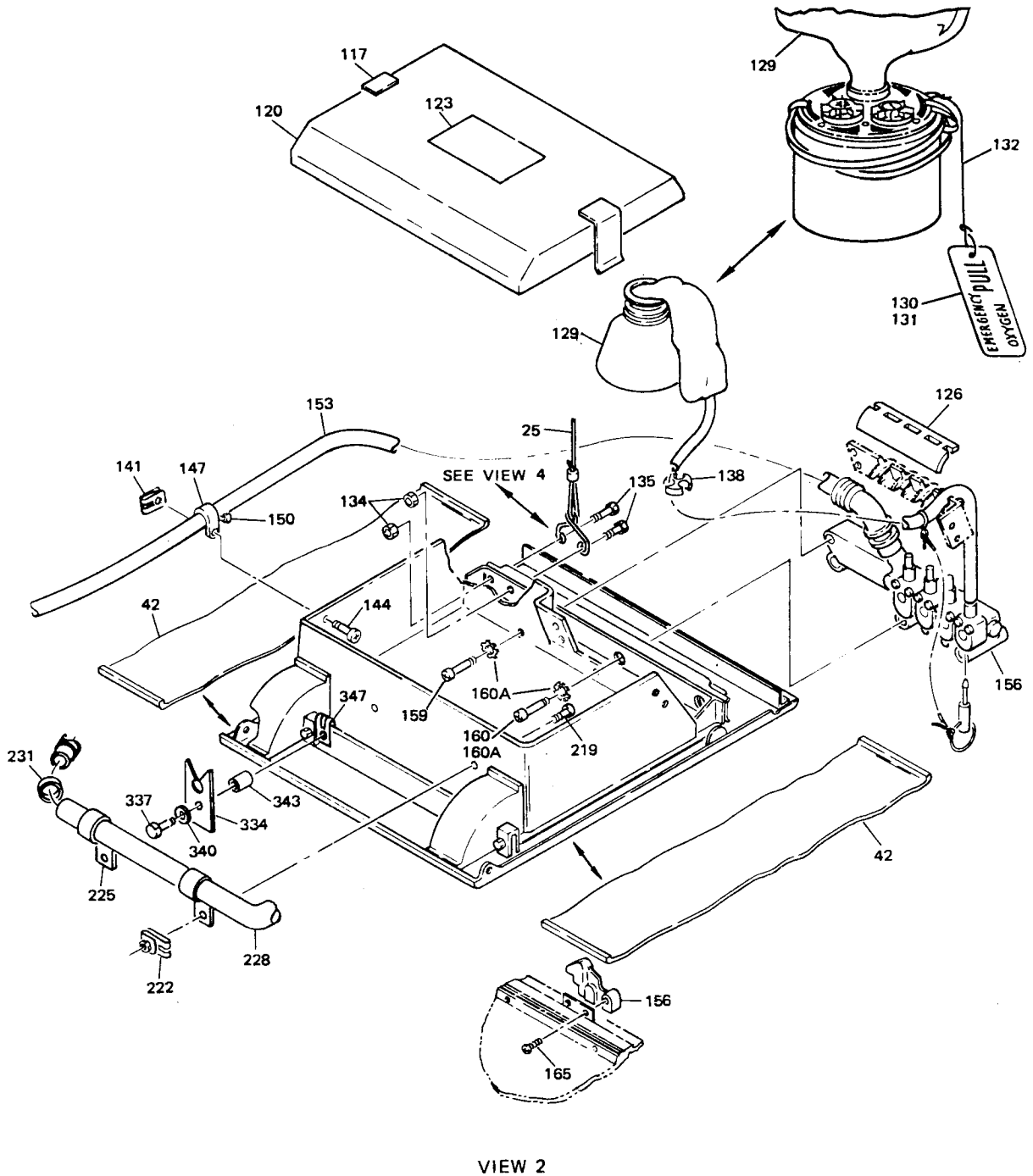
OVERHAUL MANUAL



VIEW 1

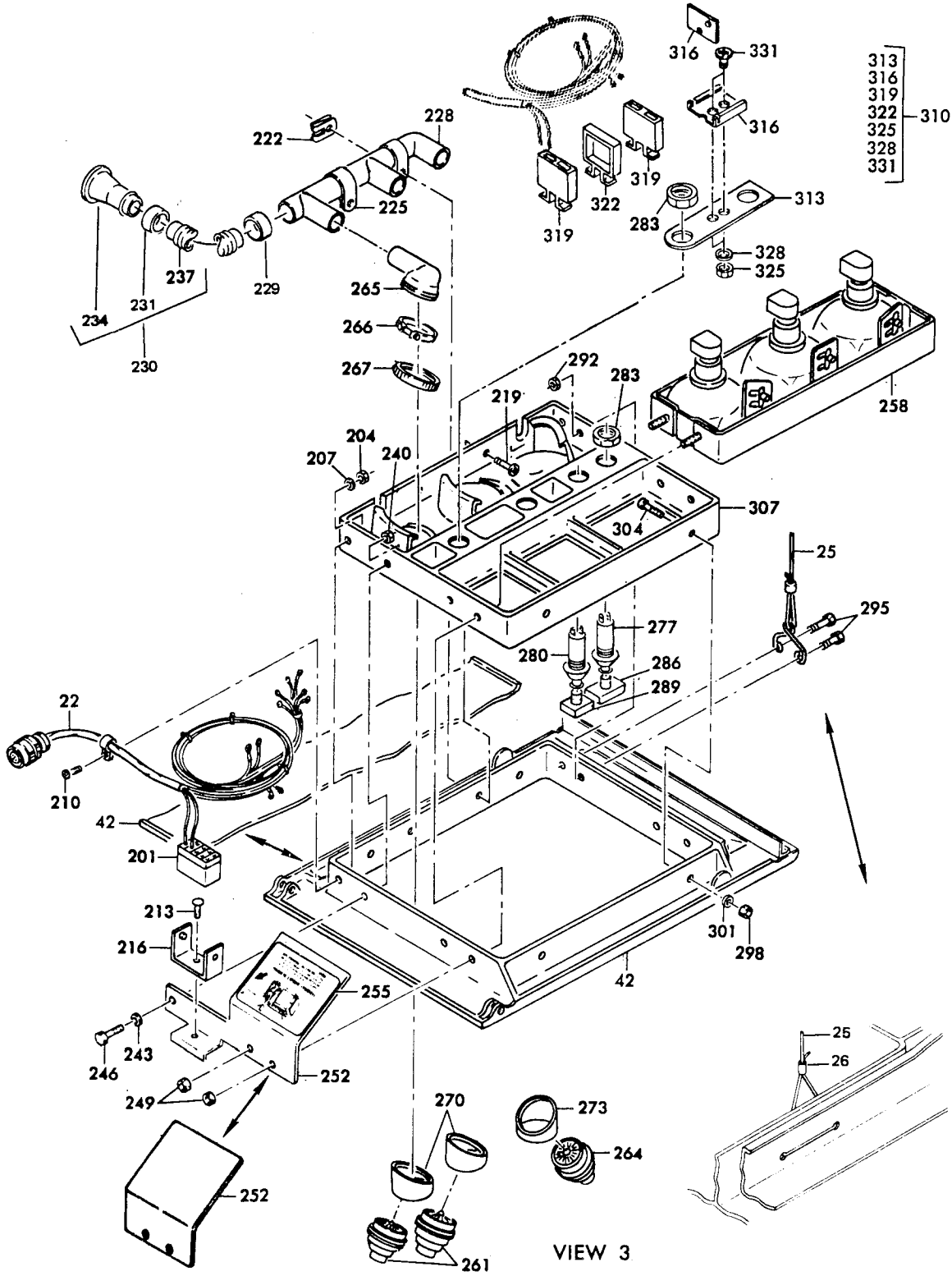
Passenger Service Unit Assembly
Figure 1101 (Sheet 2)

OVERHAUL MANUAL



Passenger Service Unit Assembly
Figure 1101 (Sheet 3)

OVERHAUL MANUAL



Passenger Service Unit Assembly
Figure 1101 (Sheet 4)

OVERHAUL MANUAL

FIG. & ITEM NO.	PART NO.	AIRLINE PART NUMBER	N O M E N C L A T U R E							USE CODE	QTY PER ASSY	
			1	2	3	4	5	6	7			
1101	65-86413-1		PASSENGER	SERVICE	UNIT	ASSY					A	REF
	65-86413-2		PSU	ASSY,	OPP	-1					B	REF
	65-86413-3		PASSENGER	SERVICE	UNIT	ASSY					C	REF
	65-86413-4		PSU	ASSY,	OPP	-3					D	REF
	65-86413-5		PASSENGER	SERVICE	UNIT	ASSY					E	REF
	65-86413-6		PSU	ASSY,	OPP	-5					F	REF
	65-86413-7		PASSENGER	SERVICE	UNIT	ASSY					G	REF
	65-86413-8		PSU	ASSY,	OPP	-7					H	REF
	65-86413-9		PASSENGER	SERVICE	UNIT	ASSY					I	REF
	65-86413-10		PSU	ASSY,	OPP	-9					J	REF
	65-86413-11		PASSENGER	SERVICE	UNIT	ASSY					K	REF
	65-86413-12		PSU	ASSY,	OPP	-11					L	REF
	65-86413-13		PASSENGER	SERVICE	UNIT	ASSY					M	REF
	65-86413-14		PSU	ASSY,	OPP	-13					N	REF
	65-86413-15		PASSENGER	SERVICE	UNIT	ASSY					O	REF
	65-86413-16		PSU	ASSY,	OPP	-15					P	REF
	65-86413-17		PASSENGER	SERVICE	UNIT	ASSY					Q	REF
	65-86413-18		PSU	ASSY,	OPP	-17					R	REF
	65-86413-19		PASSENGER	SERVICE	UNIT	ASSY					S	REF
	65-86413-20		PSU	ASSY,	OPP	-19					T	REF
	65-86413-21		PASSENGER	SERVICE	UNIT	ASSY					U	REF
	65-86413-22		PSU	ASSY,	OPP	-21					V	REF
	65-86413-23		PASSENGER	SERVICE	UNIT	ASSY					W	REF
	65-86413-28		PASSENGER	SERVICE	UNIT	ASSY					X	REF
	65-86413-29		PASSENGER	SERVICE	UNIT	ASSY					Y	REF
	65-86413-30		PASSENGER	SERVICE	UNIT	ASSY					Z	REF
	65-86413-31		PASSENGER	SERVICE	UNIT	ASSY					AA	REF
	65-86413-32		PASSENGER	SERVICE	UNIT	ASSY					BA	REF
	65-86413-33		PASSENGER	SERVICE	UNIT	ASSY					CA	REF
	65-86413-34		PASSENGER	SERVICE	UNIT	ASSY					DA	REF
	65-86413-35		PASSENGER	SERVICE	UNIT	ASSY					EA	REF
	65-86413-36		PASSENGER	SERVICE	UNIT	ASSY					FA	REF
	65-86413-37		PASSENGER	SERVICE	UNIT	ASSY					GA	REF
	65-86413-38		PASSENGER	SERVICE	UNIT	ASSY					HA	REF
	65-86413-43		PASSENGER	SERVICE	UNIT	ASSY					IA	REF
	65-86413-39		PASSENGER	SERVICE	UNIT	ASSY					JA	REF
	65-86413-40		PASSENGER	SERVICE	UNIT	ASSY					KA	REF
	65-86413-41		PASSENGER	SERVICE	UNIT	ASSY					LA	REF
	65-86413-42		PASSENGER	SERVICE	UNIT	ASSY					MA	REF
	65-86413-45		PASSENGER	SERVICE	UNIT	ASSY					NA	REF
	65-86413-46		PASSENGER	SERVICE	UNIT	ASSY					OA	REF
	65-86413-47		PASSENGER	SERVICE	UNIT	ASSY					PA	REF
	65-86413-48		PASSENGER	SERVICE	UNIT	ASSY					QA	REF
	65-86413-49		PASSENGER	SERVICE	UNIT	ASSY					RA	REF
	65-86413-50		PASSENGER	SERVICE	UNIT	ASSY					SA	REF
	65-86413-51		PASSENGER	SERVICE	UNIT	ASSY					TA	REF
	65-86413-53		PASSENGER	SERVICE	UNIT	ASSY					UA	REF
	65-86413-56		PASSENGER	SERVICE	UNIT	ASSY					VA	REF

OVERHAUL MANUAL

FIG. & ITEM NO.	PART NO.	AIRLINE PART NUMBER	N O M E N C L A T U R E							USE CODE	QTY PER ASSY
			1	2	3	4	5	6	7		
1101-	65-86413-99		PASSENGER SERVICE UNIT ASSY							WA	RF
	65-86413-100		PSU ASSY, OPP-99							XA	RF
	65-86413-104		PASSENGER SERVICE UNIT ASSY							YA	RF
	65-86413-106		PASSENGER SERVICE UNIT ASSY							ZA	RF
	65V10794-45		PASSENGER SERVICE UNIT ASSY							BB	RF
1	10-0040-101		. FIXTURE, LAMP, V72914 (BOEING 10-60781-101)							*[20]	1
1	69-68632-1		. BASE ASSY, SIGN							*[20]	1
-2	10-0040-113		. . FIXTURE, LAMP, V72914 (BOEING 10-60781-113) (USED ON 69-68632-1)								1
-3	273005		. . FUSE, V75915 (USED ON 69-68632-1)								4
4	BACS12CB08-8		. SCREW							A-L	2
7	NAS601-7P		. SCREW							Q-T	
10	NAS601-8P		. SCREW							*[1]	2
13	NAS549-8		. WASHER							QR	1
14	AN960PD6L		. WASHER							*[1]	AR
16	BACN10JC-08		. NUT							*[1]	4
16	BACN10JC-08		. NUT							*[2]	2
16	BACN10JC-08		. NUT							*[22]	4
19	NAS602-6P		. SCREW							Q-T	1
22	61-23100-5		. WIRE BUNDLE							*[24]	1
22	61-23100-2		. WIRE BUNDLE (OPT)							*[25]	1
22	61-23100-2		. WIRE BUNDLE							*[7]	1
25	69-63824-3		. LANYARD ASSY							*[33]	1
25	69-63824-1		. LANYARD ASSY (OPT)							*[33]	1
25	69-63824-1		. LANYARD ASSY							MO-T	1
26	MS3367-1-9		. STRAP, TIEDOWN (USED WITH 69-63824-3)							*[28]	1
28	69-61466-4		. SPEAKER ASSY							*[1]	1
29	NAS514P1032-8		. . SCREW								7
29A	NAS43DD3-16		. . WASHER SPACER								7
30	AN960C10L		. . WASHER								7
31	BACN10JC3		. . NUT								7
32	8-3282		. . SPEAKER, V26234 (PREF)								1
32	C8TS-C8800		. . SPEAKER, V32001 (OPT)								1
33	69-62320-1		. . RING ASSY								1
36	69-61466-3		. . TAPE, SEALING								1
39	65-86413-26		. TAPE							*[21]	1
42	65-86412-1		. SHELL ASSY, FORWARD 1/3 (REF 25-20-15)							QS	1
42	65-86412-2		. SHELL ASSY, FORWARD 1/3 (REF 25-20-15)							RT	1
42	65-86412-3		. SHELL ASSY, CENTER 1/4 (REF 25-20-15)							U TA	1
42	65-86412-4		. SHELL ASSY, CENTER 1/3 REF 25-20-15)							V	1



OVERHAUL MANUAL

FIG. & ITEM NO.	PART NO.	AIRLINE PART NUMBER	N O M E N C L A T U R E							USE CODE	QTY PER ASSY	
			1	2	3	4	5	6	7			
1101-42	65-86412-5									. SHELL ASSY, AFT 1/3 (REF 25-20-15)	O LA WA YA ZA	1
42	65-86412-6									. SHELL ASSY, AFT 1/3 (REF 25-20-15)	PZ MA XA	1
42	65-86412-7									. SHELL ASSY, FORWARD 2/3 (REF 25-20-15)	IK PA RA	1
42	65-86412-8									. SHELL ASSY, FORWARD 2/3 (REF 25-20-15)	JLX QA SA	1
42	65-86412-9									. SHELL ASSY, AFT 2/3 (REF 25-20-15)	MWYJA NABB	1
42	65-86412-10									. SHELL ASSY, AFT 2/3 (REF 25-20-15)	N KA OA	1
42	65-86412-21									. SHELL ASSY, AFT SPLIT (REF 25-20-15)	AC AA CA IA	1
42	65-86412-22									. SHELL ASSY, AFT SPLIT (REF 25-20-15)	BD BA DA	1
42	65-86412-23									. SHELL ASSY, FORWARD SPLIT (REF 25-20-15)	EG EA GA UA	1
42	65-86412-24									. SHELL ASSY, FORWARD SPLIT (REF 25-20-15)	FH FA HA VA	1
ITEMS 43 THRU 116										TRANSFERRED TO 25-20-15		
117	65-86413-25									. TAPE	*[14]	2
120	69-80172-7									. COVER, OXYGEN BOX	*[10]	1
120	69-80172-8									. COVER, OXYGEN BOX	*[11]	1
123	BAC27DPA343									. MARKER, ENGLISH WIRING DIAGRAM	*[5]	1
123	BAC27DPA465									. MARKER, ENGLISH WIRING DIAGRAM	*[29]	1
123	BAC27DPA344									. MARKER, FRENCH WIRING DIAGRAM (USE WITH OR BESIDE ENGLISH)	A-D BA CA	1
123	BAC27DPA489									. MARKER, FRENCH WIRING DIAGRAM (USE WITH OR BESIDE ENGLISH)	JK AA-DA	1
126	69-64747-1									. GUIDE, TUBE	*[14]	1
129	289-701-27									. MASK, OXYGEN V92114 (BOEING 10-60137-49)	*[14]	4
129	69V10315-6									. MASK, OXYGEN	BB	4
130	66-35012-0									. STREAMER ASSY - PULL	BB	4
131	66-35012-5									. . PLATE	BB	1
132	BACM9L20-10D									. . PLACARD - PULL	BB	2
133	65V10794-46									. STRING	BB	AR
134	BACN10JCO8									. NUT	*[14]	2
135	NAS602-8P									. SCREW	*[14]	2

OVERHAUL MANUAL

FIG. & ITEM NO.	PART NO.	AIRLINE PART NUMBER	N O M E N C L A T U R E							USE CODE	QTY PER ASSY
			1	2	3	4	5	6	7		
1101-138	63-10155									*[14]	8
141	BACN10FX83									*[14]	1
144	NAS602-8P									*[14]	1
147	BACCL0DK-7									*[14]	1
150	BACP20BA1										1
153	ZH833-39									*[15]	1
153	37001-39									*[15]	1
153	ZH833-40									LA NA OA-VA	1
153	37001-40									LA NA OA-VA	1
156	115013-01									*[12]	1
156	802078-00									*[12]	1
156	115013-02									*[13]	1
156	802078-01									*[13]	1
156	115013-04									X	1
156	802078-03									X	1
156	115013-03									Y	1
156	802078-02									Y	1
159	NAS603-20P										1
159A	MS35335-32									DELETED	
160	NAS603-22P										3
160A	MS35335-32										2
162	*[4]									DELETED	
165	BACSL2CB04-9										2
168	*[4]									DELETED	
172											
THRU										NOT USED	
200											
201	TR1E4									*[6]	1
204	BACN10JC-06									*[16]	1
207	AN960PD6L									*[16]	1
210	NAS601-8P									*[16]	1
213	NAS601-3P									*[6]	1
216	T11AH									*[6]	1

OVERHAUL MANUAL

FIG. & ITEM NO.	PART NO.	AIRLINE PART NUMBER	N O M E N C L A T U R E							USE CODE	QTY PER ASSY
			1	2	3	4	5	6	7		
1101-219	NAS602-8P									*[16]	2
222	BACN10FX83									*[16]	2
225	BAC10DK12										2
228	69-62660-2									*[30]	1
229	MS3367-4-9									*[30]	1
229	6203									*[30]	1
230	69-68932-1									*[30]	1
230	69-68932-2									*[30]	1
231	6203										
231	MS3367-4-9										1
234	69-64738-1										1
237	BE406-3										1
237	AD604-3										1
240	BACN10JC06									*[6]	1
243	AN960PD6L									*[6]	1
246	NAS601-8P									*[6]	1
249	BACN10JC08									*[16]	4
252	69-61460-6									*[8]	1
252	69-61460-7									*[9]	1
252	69-65414-1									YZ AA BA-OA UA-BB	1
255	BAC27DPA373									*[8]	1
255	BAC27DPA374									*[9]	1
255	BAC27DPA442									AC	1
255	BAC27DPA443									BD	1
258	10-0429-1									*[17]	1
258	10-0429-2									*[18]	1
258	69-66655-8									XA YA	1
261	L16999-15C									*[31]	2
261	1947-1									YZ	2
264	L20646-1C									*[31]	1
264	1947-1									YZ	1
265	*[3]										1
266	*[3]										1
267	*[3]										1

OVERHAUL MANUAL

FIG. & ITEM NO.	PART NO.	AIRLINE PART NUMBER	N O M E N C L A T U R E							USE CODE	QTY PER ASSY
			1	2	3	4	5	6	7		
1101-											
270	65-79165-31		.							*[30]	1
273	65-79165-32		.							*[30]	1
277	710906-13A1		.							*[30]	1
280	710907-13A2		.							*[30]	3
283	*[4]		.	.						*[16]	1
286	690623A1-4		.							*[32]	1
286	720905-C1		.							YZ	1
289	691212-13A1-1		.							*[30]	3
289	691212-13A1-1AJ		.							JALA MA	3
292	BACN10JC08		.							*[16]	2
295	NAS602-8P		.							*[16]	2
298	BACN10JC08		.							[16]	4
301	AN960PD8L		.							*[16]	4
304	NAS514P832-5P		.							*[16]	4
307	65-79165-5		.							*[26]	1
307	65-79165-6		.							*[27]	1
310	69-65298-1		.							YZ AA BA-OA UA-BB	1
313	69-65258-1		.	.							1
316	AMY0110T-8		.								
319	BACM15C1A		.	.							2
322	YHLZ1C-8		.	.							1
325	BACN10JC3		.	.							2
328	AN960PD-10L		.	.							2
331	NAS603-4P		.	.							2
334	69-64747-2		.							*[23]	1
337	NAS602-20P		.							UV TA	1
340	AN960D8L		.							UV TA	1
343	NAS42DD6-48		.							UV TA	1
347	BACN10FX84		.							UV TA	1

-ITEM NOT ILLUSTRATED



OVERHAUL MANUAL

- *[1] ABEFHIQRX AA BA EA FA IA PA QA UA
- *[2] CDGHKL CA DA GA HA
- *[3] SUPPLIED AS PART OF 10-60141-18, -19, -20
- *[4] NO BOEING PART NUMBER ASSIGNED
- *[5] A-JLMNUVW
- *[6] A-HM-P W
- *[7] A-IM-PW
- *[8] ACEGMO
- *[9] BDFHNPW
- *[10] ACEGIKMUY AA CA EA GA IA JA NA PA RA TA UA BB
- *[11] BDFHLNVWX BA DA FA HA KA OA QA SA VA
- *[12] ACEGIKMU W AA CA EA GA IA JA NA PA RA TA UA BB
- *[13] BDFHJLNV BA DA FA HA KA OA QA SA VA
- *[14] A-NU-Y AA-KA NA-VA BB
- *[15] A-NU-Y AA-HA JA KA BB
- *[16] A-HM-PWY-Z AA-OA UA VA BB
- *[17] ACEGMOWY AA CA EA GA IA JA LA NA UA BB
- *[18] BDFHNPZ BA DA FA HA KA MA OA VA
- *[19] A-HM-PW AA-OA UA VA BB
- *[20] A-L Q-T X AA-IA PA-SA UA VA
- *[21] A-LQ-T AA-IA QA-TA VA
- *[22] CDGH K-P S-W YZ CA DA GA-OA RA SA TA VA BB
- *[23] I-L UV XY AA-KA NA-SA UA VA BB
- *[24] JKLQ-TX-Z AA-SA UA VA BB
- *[25] JKLQ-T PA QA SA
- *[26] ACEGMOY AA CA EA GA IA JA LA NA UA XA-ZA BB
- *[27] BDFHNPWZ BA DA FA HA KA MA OA VA WA
- *[28] A-LN U-Z AA-KA NA-VA BB
- *[29] JKYZ AA-KA NA-VA BB
- *[30] A-HM-PWYZ AA-OA UA-ZA BB
- *[31] A-HM-PWAA-OA UA-ZA BB
- *[32] A-HM-PWAA-OA UA VA XA YA BB
- *[33] A-LNU-ZAA-KANA-ZA BB

REFERENCE DESIGNATION INDEX (SEE SCHEMATIC DIAGRAM)		
REFERENCE DESIGNATION	PART NUMBER	ITEM NO.
D3100	67-907	
L3000	10-0429-1	258
L3002	10-0040-1	1
M3001	C8TS-C8800	32
S3000	710907-13A2	277
S3001-S3003	710906-13A1	280
T3000	TR1E4	201
T3000	BACM15C1A	319

OVERHAUL MANUAL

VENDORS

V02217 PURITAN-BENNETT AERO SYSTEMS DIV., 111 PENN STREET, EL SEGUNDO,
CALIFORNIA 90245

V05399 BEMCO, INC., P. O. BOX 68, CENTERTON, ARKANSAS 72719

V09922 BURNDY CORPORATION, RICHARDS AVE., NORWALK, CONNECTICUT 06852

V16827 PURITAN-BENNETT AERO SYSTEMS, 10800 PFLUM ROAD, LENEXA,
KANSAS 66211

V17744 LUMINATOR DIV., GULTON INDUSTRIES INC., 1200 E. DALLAS NORTH PARKWAY,
PLANO, TEXAS 75074

V21868 H. K. PORTER COMPANY, THERMOID DIVISION, GOVERNMENT SALES OFFICE,
1627 PORTER BLDG., 601 GRANT STREET, PITTSBURGH, PENNSYLVANIA 15219

V24984 HYDRAFLOW SUPPLY, INC., 13259 E. 166TH ST., CERRITOS, CALIFORNIA
90701

V34263 CTS OF BROWNSVILLE INC., 1100 ROOSEVELT ST., BROWNSVILLE, TEXAS,
78520

V32001 PEMCOR INC., JENSEN SOUND LABORATORY, 43100 TRANSWORLD RD.,
SCHILLER PARK, ILLINOIS 60176

V49367 PYLE-NATIONAL COMPANY, 1334 NORTH KOSTNER AVENUE, CHICAGO, ILLINOIS
60651

V53655 SCOTT AVIATION DIV. OF A-T-O INC., 225 ERIE ST., LANCASTER,
NEW YORK 14086

V71482 CLARE CP AND CO., 3101 FRATT BLVD., CHICAGO, ILLINOIS 60645

V72914 GRIMES MANUFACTURING COMPANY, 515 NORTH RUSSELL ST., URBANA,
OHIO 43078

V75915 LITTEL FUSE INC., 800 E. NORTHWEST HIGHWAY, DES PLAINES,
ILLINOIS, 60016

V81646 PARKER-HANNIFIN CORP., CLAMP AND FLASHER DIV., 1000 PENNSYLVANIA
AVE., BROOKLYN, NEW YORK 11207

V83564 WEMAC COMPANY, 8475 PACIFIC ST., P.O. BOX 8310, FOUNTAIN VALLEY,
CALIFORNIA 92708

V92114 SIERRA ENGINEERING COMPANY, DIV. OF CAPTECH INC., 123 EAST
MONTECITO AVE., SIERRA MADRE, CALIFORNIA 91024



OVERHAUL MANUAL

Part No.	Fig. and Index No.	Qty. per Assy.	Part No.	Fig. and Index No.	Qty. per Assy.
AD604-3	1101-237	1	MS35649-282		AR
AMY0110T-8	316	1	NAS42DD6-48		AR
AN960C10L		AR	NAS514P1032-8		AR
AN960PD10L	328	2	NAS514P632-6		AR
AN960PD6L		AR	NAS514P832-5P		AR
AN960PD8L		AR	NAS549-8		AR
BACC10DK12	225	2	NAS601-3P		AR
BACC10DK7	147	1	NAS601-8P		AR
BACM9L20-10D	132	2	NAS601-9P		AR
BACM15C1A	319	2	NAS602-20P		AR
BACN10FX83	141	1	NAS602-22P		AR
BACN10FX83	222	2	NAS602-6P		AR
BACN10FX84			NAS602-8P		AR
BACN10JC03	325	2	NAS620-6L		AR
BACN10JC06	240	1			
BACN10JC06	249	4	TR1E4	201	1
BACN10JC06	105	4	T11AH	216	1
BACN10JC08	16	4			
BACN10JC08	132	2	YHLZ1C-8	322	1
BACN10JC08	292	2			
BACN10JC08	204	1	ZH833-39	153	1
BACN10JC08	16	1	ZH833-40	153	1
BACN10JC08	298	4			
BACN10JC3	31	7	10-0040-101	1	1
BACP20BA1	150	1	10-0040-113	2	1
BACR15BAAD		AR	10-0429-1	258	1
BACS12CB08-8	4	2	10-0429-2	258	1
BAC27DPA34323	1		10-60137-49	129	4
BAC27DPA344	23	1	10-60141-18	261	2
BAC27DPA373	255	1	10-60141-19	264	1
BAC27DPA374	255	1	10-60141-20	261	2
BAC27DPA442	255	1	10-60141-20	264	1
BAC27DPA443	255	1	10-60174-39	153	1
BAC27DPA465	123	1	10-60174-40	153	1
BAC27DPA489	123	1	10-60513-10	156	1
BE406-3	237	1	10-60513-11	156	1
			10-60513-12	156	1
C8TSC8800	215	1	10-60513-14	156	1
			10-60513-7	156	1
L16999-15C	261	2	10-60513-8	156	1
L20646-1C	264	1	10-60513-9	156	1
			10-60781-101	1	1
MS20253-3-124		AR	10-60781-113	2	1
MS3367-1-9		AR	10-61779-1	258	1
MS3367-4-9		AR	10-61779-2	258	1
MS35335-32		AR			
MS35338-42		AR			

OVERHAUL MANUAL

Part No.	Fig. and Index No.	Qty. per Assy.	Part No.	Fig. and Index No.	Qty. per Assy.
115013-01	156	1	65-86412-9	42	1
115013-02	156	1	65-86413-1	1101	
115013-03	156	1	65-86413-10	1101	
115013-04	156	1	65-86413-100	1101	
115013-04	156	1	65-86413-104	1101	
1947-1	261	2	65-86413-106	1101	
1947-1	264	1	65-86413-11	1101	
273005	3	4	65-86413-12	1101	
289-701-27	129	4	65-86413-13	1101	
37001-39	153	1	65-86413-14	1101	
37001-40	153	1	65-86413-15	1101	
61-23100-2	22	1	65-86413-16	1101	
61-23100-5	22	1	65-86413-17	1101	
6203	229	1	65-86413-18	1101	
6203	234	1	65-86413-19	1101	
63-10155	138	8	65-86413-2	1101	
65-79165-21	114	1	65-86413-20	1101	
65-79165-22	114	1	65-86413-21	1101	
65-79165-31	270	2	65-86413-22	1101	
65-79165-32	273	1	65-86413-23	1101	
65-79165-5	307	1	65-86413-25	117	1
65-79165-6	307	1	65-86413-26	39	1
65-80172-7	120	1	65-86413-28	1101	
65-80172-8	120	1	65-86413-29	1101	
65-86412-1	42	1	65-86413-30	1101	
65-86412-10	42	1	65-86413-31	1101	
65-86412-11	171	1	65-86413-32	1101	
65-86412-12	171	1	65-86413-33	1101	
65-86412-13	171	1	65-86413-34	1101	
65-86412-14	171	1	65-86413-35	1101	
65-86412-15	171	1	65-86413-36	1101	
65-86412-16	171	1	65-86413-37	1101	
65-86412-17	171	1	65-86413-38	1101	
65-86412-18	171	1	65-86413-39	1101	
65-86412-19	171	1	65-86413-40	1101	
65-86412-2	42	1	65-86413-41	1101	
65-86412-20	171	1	65-86413-42	1101	
65-86412-21	42	1	65-86413-43	1101	
65-86412-22	42	1	65-86413-45	1101	
65-86412-23	42	1	65-86413-46	1101	
65-86412-24	42	1	65-86413-47	1101	
65-86412-3	42	1	65-86413-48	1101	
65-86412-4	42	1	65-86413-49	1101	
65-86412-5	42	1	65-86413-50	1101	
65-86412-6	42	1	65-86413-51	1101	
65-86412-7	42	1	65-86413-53	1101	
65-86412-8	42	1	65-86413-56	1101	



OVERHAUL MANUAL

Part No.	Fig. and Index No.	Qty per. Assy	Part No.	Fig. and Index No.	Qty per. Assy
65-86413-99	1101-	1			
66-35012-0	130	4			
66-35012-5	131	1			
69-61460-7	252	1			
69-61466	36	1			
69-61466-4	28	1			
69-62320	33	1			
69-62660-2	228	1			
69-63824-1	25	1			
69-63824-3	25	1			
69-64738-1	234	1			
69-64747-1	126	1			
69-64747-2	334	1			
69-65265-1	313	1			
69-65298-1	310	1			
69-65414-1	252	1			
69-66655-8	258	1			
69-68932-1	1	1			
69-68932-1	230	1			
69-68932-2	230	1			
690623A1-4	286	1			
691212-131	286	1			
691212-13A1-1	289	3			
691212-13A1-1AJ	289	3			
69V10315-6	129	4			
65V10794-45	1101	RF			
65V10794-46	133	AR			
710906-13A1	277	1			
710907-13A2	280	3			
720905-C1	286	1			
8-3280	32	1			
802078-00	156	1			
802078-01	156	1			
802078-02	156	1			
802078-03	156	1			