



OVERHAUL MANUAL

TO: ALL HOLDERS OF PASSENGER SERVICE, UNIT ASSEMBLY, OVERHAUL MANUAL, 25-20-14

REVISION NO. 2, DATED NOV 10/82

HIGHLIGHTS

DESCRIPTION OF CHANGE	TOPICS AFFECTED												
	D & O	D/Assy	Cleaning	Insp/Chk	Repair	Assy	F/C	Test	T/Shooting	S/Tools	Storage	IPL	L/Overhaul
Added 65-86413-103 assembly with improved oxygen tubing												X	



OVERHAUL MANUAL

PASSENGER SERVICE UNIT ASSEMBLY

25-20-14

I BOEING P/N 65-86413-81 thru -95, -97, -98, -101, -102, -103

AIRLINE P/N

THE FOLLOWING DIRECTIVES APPLY TO THIS SUBJECT:

BOEING SERVICE BULLETIN	BOEING TEMPORARY REVISION	OTHER DIRECTIVES	DATE DIRECTIVE INCORPORATED INTO TEXT
		PRR 23605-44 PRR 32362	May 10/75 May 10/75



OVERHAUL MANUAL

LIST OF EFFECTIVE PAGES					
* Indicates pages revised, added or deleted in latest revision					
F Indicates foldout pages - print one side only					
PAGE	DATE	PAGE	DATE	PAGE	DATE
25-20-14					
* T-1	Nov 10/82				
T-2	BLANK				
* LEP-1	Nov 10/82				
LEP-2	BLANK				
T/C-1	May 10/75				
T/C-2	BLANK				
401	May 10/79				
402	May 10/79				
1101	May 10/75				
1102	May 10/79				
1103	May 10/79				
1104	BLANK				
1105	May 10/79				
1106	May 10/79				
1107	May 10/79				
1108	May 10/79				
1108A	BLANK				
1108B	May 10/79				
1109	May 10/79				
1110	May 10/79				
1111	May 10/79				
1112	May 10/79				
1113	May 10/79				
1114	May 10/79				
1115	May 10/79				
1116	May 10/79				
* 1117	Nov 10/82				
* 1118	Nov 10/82				
* 1119	Nov 10/82				
1120	BLANK				
1121	May 10/79				
1122	May 10/79				
1123	May 10/79				
1124	May 10/79				
1125	May 10/79				
1126	May 10/79				
1127	May 10/79				
1128	May 10/75				
1129	May 10/79				
1130	BLANK				
1131	May 10/79				
* 1132	Nov 10/82				
* 1133	Nov 10/82				
1134	May 10/79				

BOEING 
COMMERCIAL JET
OVERHAUL MANUAL

TABLE OF CONTENTS

<u>Paragraph Title</u>	<u>Page</u>
Description and Operation	*[1]
Disassembly	*[1]
Cleaning.	*[1]
Inspection/Check.	*[1]
Repair.	401
Assembly.	*[1]
Fits and Clearances (not applicable)	
Testing	*[1]
Trouble Shooting.	*[1]
Storage Instructions.	*[1]
Special Tools, Fixtures, and Equipment (not applicable)	
Illustrated Parts List.	1101

*[1] Special instructions not required. This manual contains only refinish and replacement information and illustrated parts list. Use standard industry practices, refer to 25-20-00, Passenger Service Unit Overhaul Procedure.

BOEING 
COMMERCIAL JET
OVERHAUL MANUAL

REPAIR

1. REPAIR

A. Material

NOTE: Use listed materials or equivalent substitutes.

- (1) Tape (205, Fig. 1103), (365, Fig. 1105) -- 3 inch wide P32 vinyl tape (white), Permacel Division, Johnson and Johnson Inc., U.S. Highway 1, New Brunswick, New Jersey 08901
- (2) Tape (5, Fig. 1102-1105) -- 0.75 to 1.0 inch wide P32 vinyl tape (white), Permacel Division, Johnson and Johnson Inc., U.S. Highway 1, New Brunswick, New Jersey 08901
- (3) Lacquer, special hi-speed semigloss (Ref 20-60-02)

B. Refinish (Fig. 1101-1105)

CAUTION: DO NOT USE HI-SPEED LACQUER TO REFINISH POLYCARBONATE PLASTIC PARTS. IT WILL CAUSE INSTANT DETERIORATION THAT MAY NOT BE DETECTABLE VISUALLY.

NOTE: Refer to 20-30-02 for stripping of protective finishes, and to 20-41-01 for explanation of F and SRF finish codes.

- (1) Mount assembly (120, Fig. 1101), (105, Fig. 1103, 1105) -- Alodize or chromic acid anodize (Ref 20-43-01) and apply one coat BMS 10-11, type 1 primer (SRF-2.30) all over. Material: Al alloy.
- (2) Heat shield assy (230, Fig. 1104), (295, Fig. 1105) -- Apply two coats hi-speed semigloss lacquer, BAC711 white, (F-14.904-711) all over. Material: Al alloy.

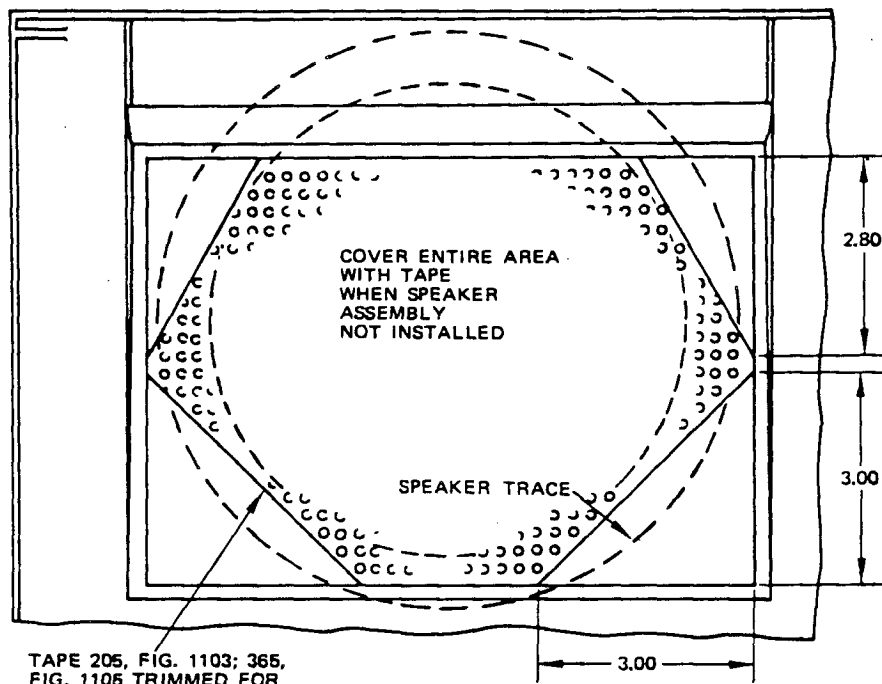
2. REPLACEMENT

A. Trim tape for units having speakers per Fig. 401.

- (1) Paint speaker grille face after tape is applied, per customer color code to cover tape adhesive exposed through speaker grille holes.

BOEING
COMMERCIAL JET
OVERHAUL MANUAL

65-86413
DASH NUMBERS LIMITED



TAPE 205, FIG. 1103; 365, FIG. 1105 TRIMMED FOR SPEAKER ASSEMBLY 75, FIG. 1103; 80, FIG. 1105

ALL DIMENSIONS ARE IN INCHES

65-86413

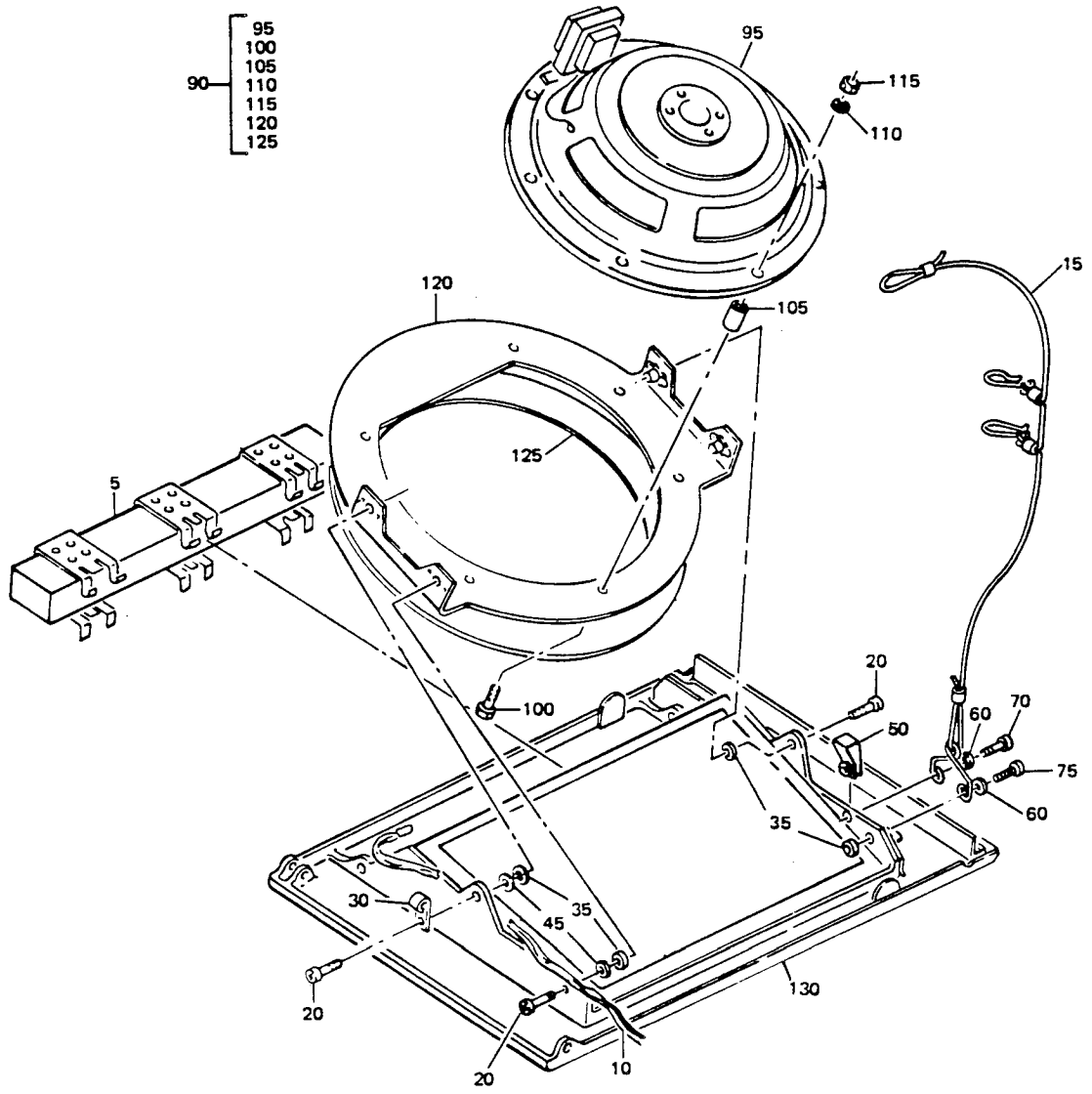
BOEING 
COMMERCIAL JET
OVERHAUL MANUAL

ILLUSTRATED PARTS LIST

THIS PAGE
INTENTIONALLY
LEFT BLANK

BOEING 
COMMERCIAL JET
OVERHAUL MANUAL

65-86413
 DASH NUMBERS LIMITED

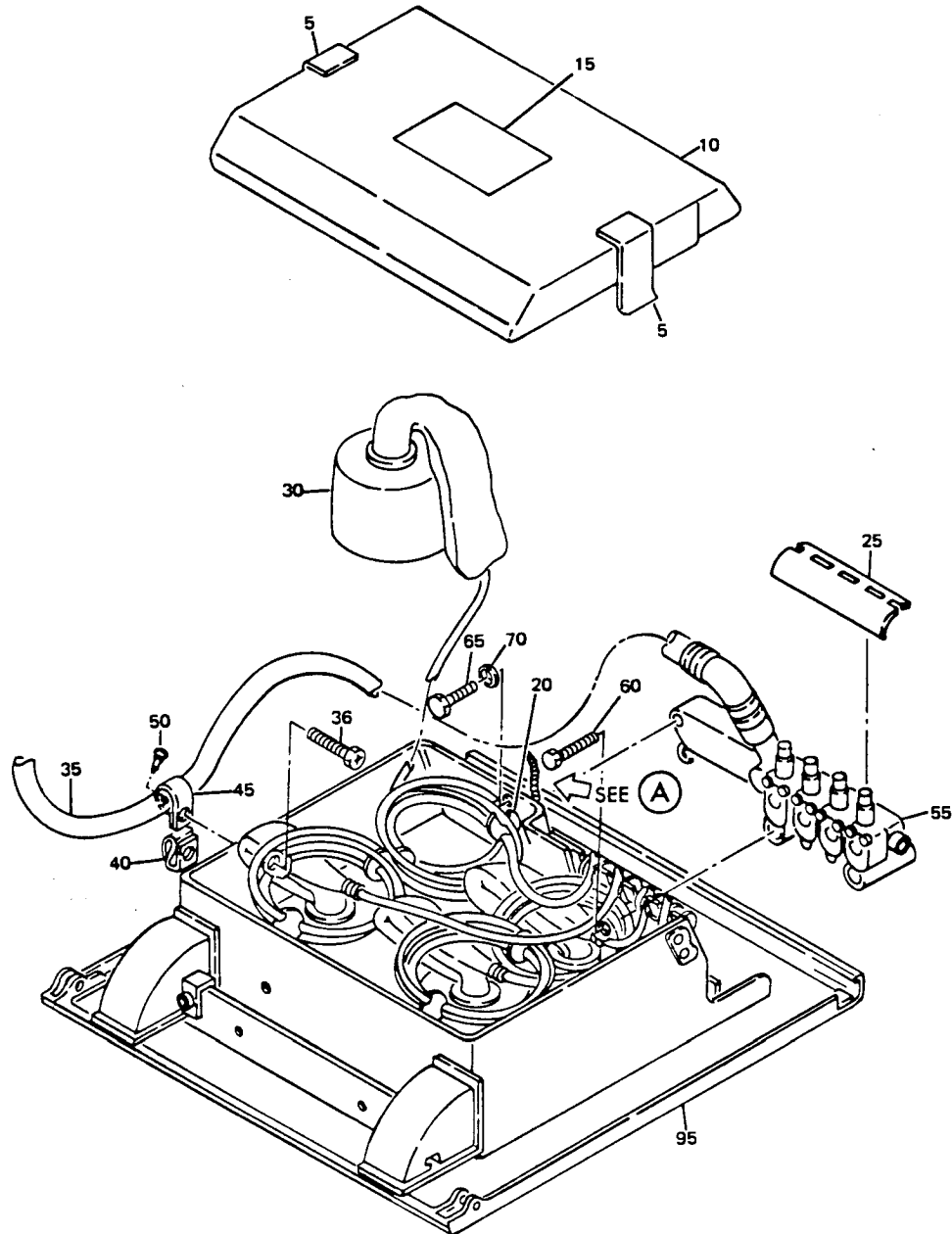


Passenger Service Unit Assembly Fwd 1/3
 Figure 1101

BOEING 
COMMERCIAL JET
OVERHAUL MANUAL

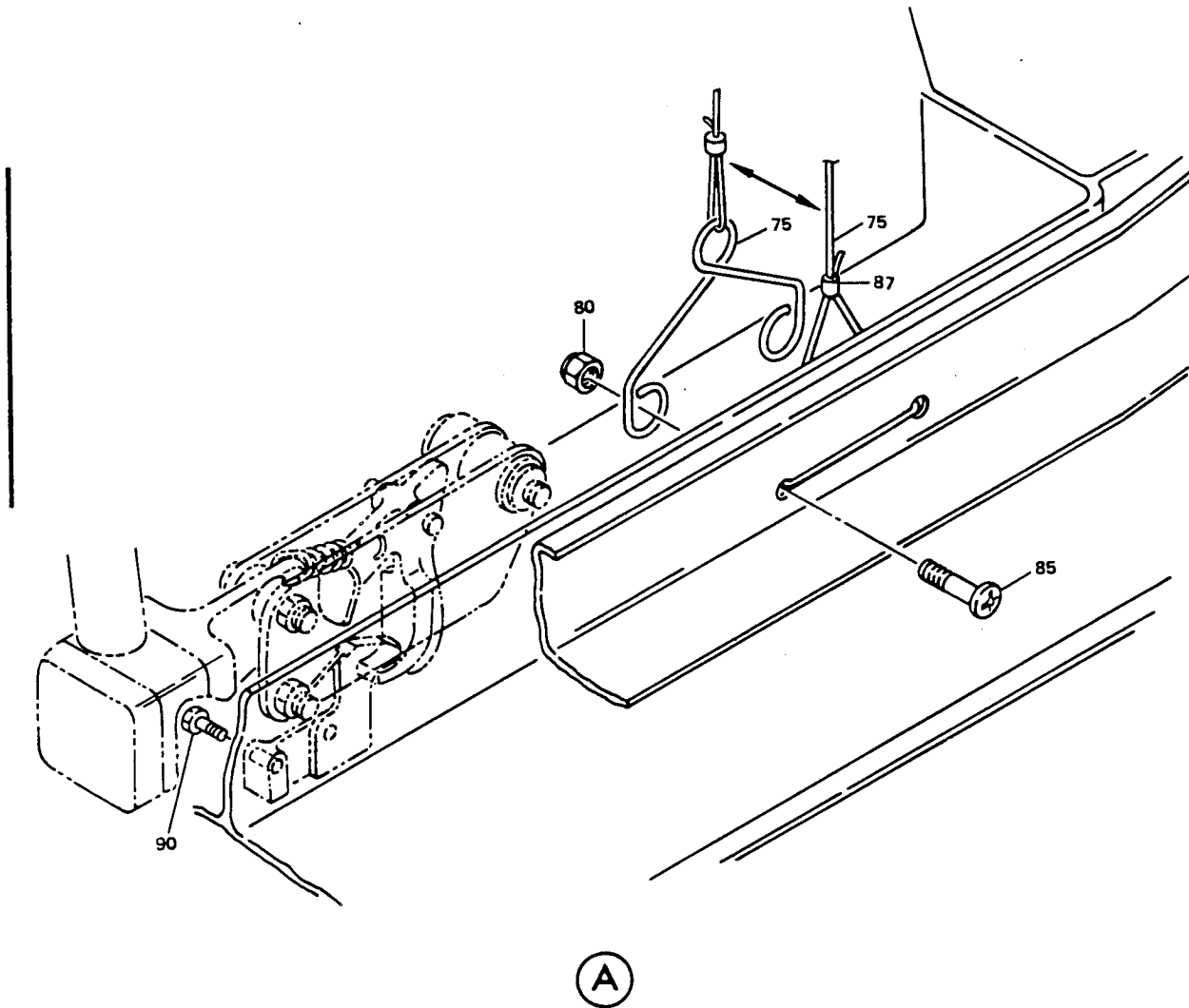
FIG. & ITEM NO.	PART NO.	AIRLINE PART NUMBER	N O M E N C L A T U R E							USE CODE	QTY PER ASSY
			1	2	3	4	5	6	7		
1101-	65-86413-83		PASSENGER SERVICE UNIT ASSY, FWD 1/3								RF
	65-86413-84		PASSENGER SERVICE UNIT ASSY, FWD 1/3								RF
5	800000095-2		. BASE, V05617 (BOEING 10-61892-2)								1
10	61-23100-8		. WIRE BUNDLE								1
15	69-63824-1		. LANYARD ASSY								1
20	BACS12CB06-7P		. SCREW								3
25	BACS12CB08		DELETED								
30	BACCI0DK		. CLAMP-FIT TO SIZE								1
35	AN960PD6L		. WASHER								4
40	AN960PD8		DELETED								
45	NAS549-8		. WASHER							AR	1
50	BACN10FX84		. NUT								1
55	BACN10JC08		DELETED								
60	AN960D8L		. WASHER								2
65	NAS42DD6-48		. SPACER								1
70	BACS12CB08-20		. SCREW								1
75	BACS12CB06-7P		. SCREW								1
80	BACN10JC6		DELETED								
90	69-61466-4		. SPEAKER ASSY								1
95	8-3282		. . SPEAKER, V34263								1
95	C8TS-C8800		. . SPEAKER, V32001 (OPT)								1
100	NAS514P1032-10		. . SCREW								7
105	NAS43DD3-16		. . WASHER, SPACER								7
110	AN960C10L		. . WASHER								7
115	BACN10JC3		. . NUT								7
120	69-62320-1		. . MOUNT ASSY, SPEAKER								1
125	65-61466-3		. . TAPF, SEALING							AR	1
130	65-86412-1		. BASIC PSU (REF 25-20-15)								1
130	65-86412-2		. BASIC PSU (REF 25-20-15)								1

BOEING 
COMMERCIAL JET
OVERHAUL MANUAL



BOEING 
COMMERCIAL JET
OVERHAUL MANUAL

65-86413
DASH NUMBERS LIMITED



Passenger Service Unit Assembly, Center 1/3
Figure 1102 (Sheet 2)

BOEING 
COMMERCIAL JET
OVERHAUL MANUAL

FIG. & ITEM NO.	PART NO.	AIRLINE PART NUMBER	N O M E N C L A T U R E							USE CODE	QTY PER ASSY
			1	2	3	4	5	6	7		
1102-	65-86413-92		PASSENGER SERVICE UNIT ASSY, CENTER 1/3							A	RF
	65-86413-101		PASSENGER SERVICE UNIT ASSY, CENTER 1/3							B	RF
	65-86413-102		PASSENGER SERVICE UNIT ASSY, CENTER 1/3							C	RF
5	65-86413-25		. TAPE							AB	AR
10	65-80172-7		. COVER, OXYGEN BOX							C	1
10	65-80172-8		. COVER, OXYGEN BOX							A	1
15	BAC27DPA489		. PLACARD (FRENCH)							BC	1
15	BAC27DPA465		. PLACARD (ENGLISH)								1
20	63-10155		. COIL RETAINER								8
25	69-64747-1		. GUIDE, TUBE								1
30	289-701-27		. MASK, OXYGEN, V92114 (BOEING 10-60137-49)								4
35	37001-39		. HOSE, OXYGEN, V24984 (BOEING 10-60174-39)							AB	1
35	ZH833-39		. HOSE, OXYGEN, V02217 (BOEING 10-60174-39)							AB	1
35	37001-39		. HOSE, OXYGEN, V24984 (BOEING 10-60174-39)(LIMITED USE)							C	1
35	ZH833-39		. HOSE, OXYGEN, V02217 (BOEING 10-60174-39)(LIMITED USE)							C	1
35	37001-40-1		. HOSE, OXYGEN, V24984 (BOEING 10-60174-40)(LIMITED USE)							C	1
36	NAS602-8P		. SCREW								1
40	BACN10FX83		. NUT								1
45	BACC10DK7		. CLAMP								1
50	BACP20BA1		. PLUG								1
55	115013-01		. MANIFOLD ASSY, V16827 (BOEING 10-60513-7)							AB	1
55	802078-00		. MANIFOLD ASSY, V53655 (BOEING 10-60513-11)(OPT)							AB	1
55	115013-02		. MANIFOLD ASSY, V16827 (BOEING 10-60513-8)							C	1
55	802078-01		. MANIFOLD ASSY, V53655 (BOEING 10-60513-12)(OPT)							C	1
60	BACS12CB3-22		. SCREW								2
60	NAS603-22P		. SCREW (OPT)								2
65	BACS12CB3-20		. SCREW								1
65	NAS603-20P		. SCREW (OPT)								1
70	MS35335-32		. WASHER								1
75	69-63824-3		. LANYARD ASSY								1

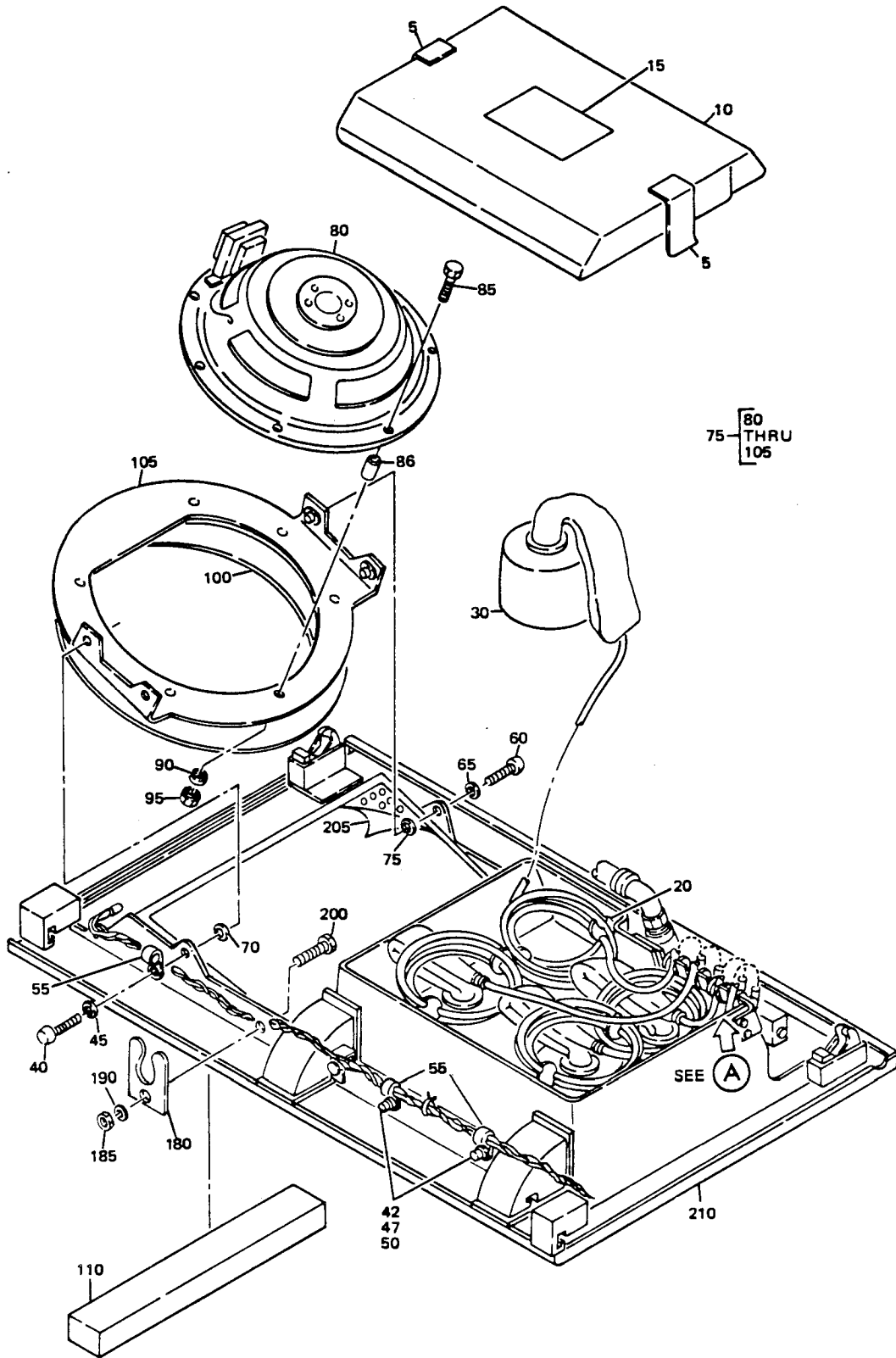
BOEING 
COMMERCIAL JET
OVERHAUL MANUAL

65-86413
DASH NUMBERS LIMITED

FIG. & ITEM NO.	PART NO.	AIRLINE PART NUMBER	N O M E N C L A T U R E							USE CODE	QTY PER ASSY
			1	2	3	4	5	6	7		
1102-											
75	69-63824-1										1
80	BACN10JCO8										2
85	BACS12CB08-5P										2
87	MS3367-1-9										1
90	BACS12CB04-9										2
95	65-86412-3								AB		1
95	65-86412-4								C		1

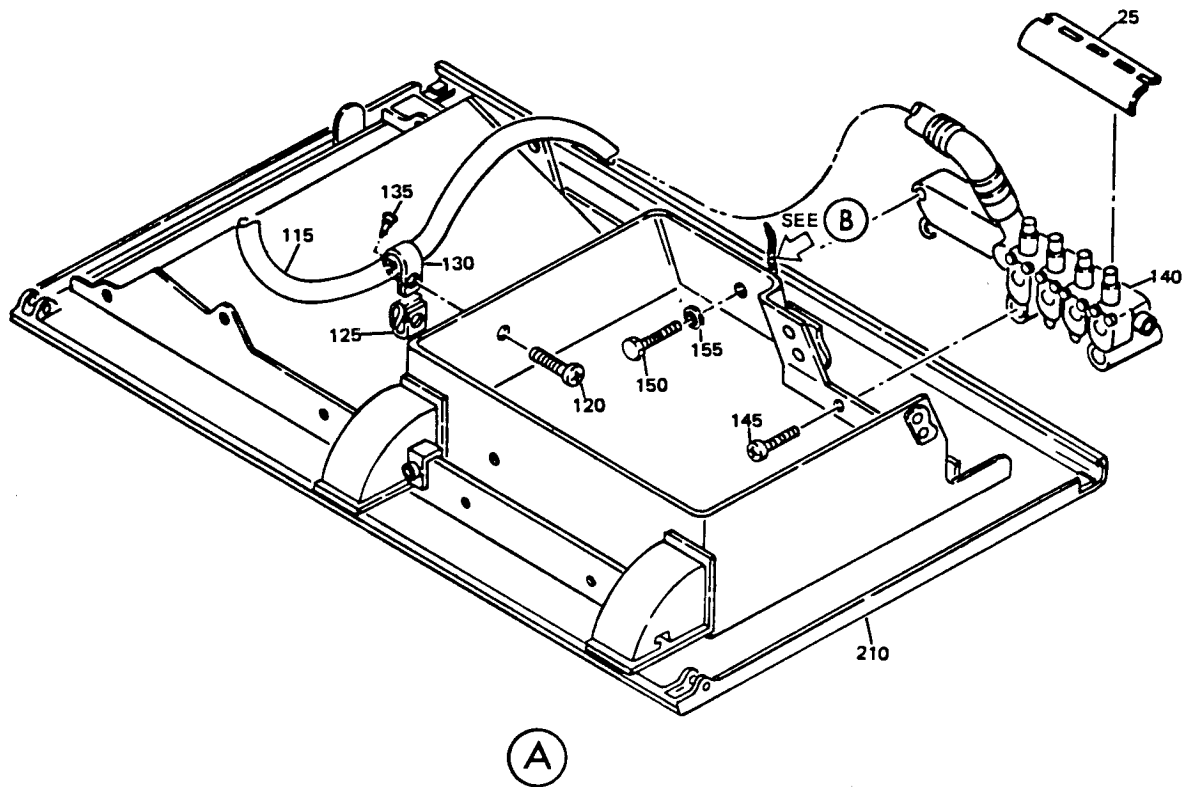
BOEING
COMMERCIAL JET
OVERHAUL MANUAL

65-86413
 DASH NUMBERS LIMITED

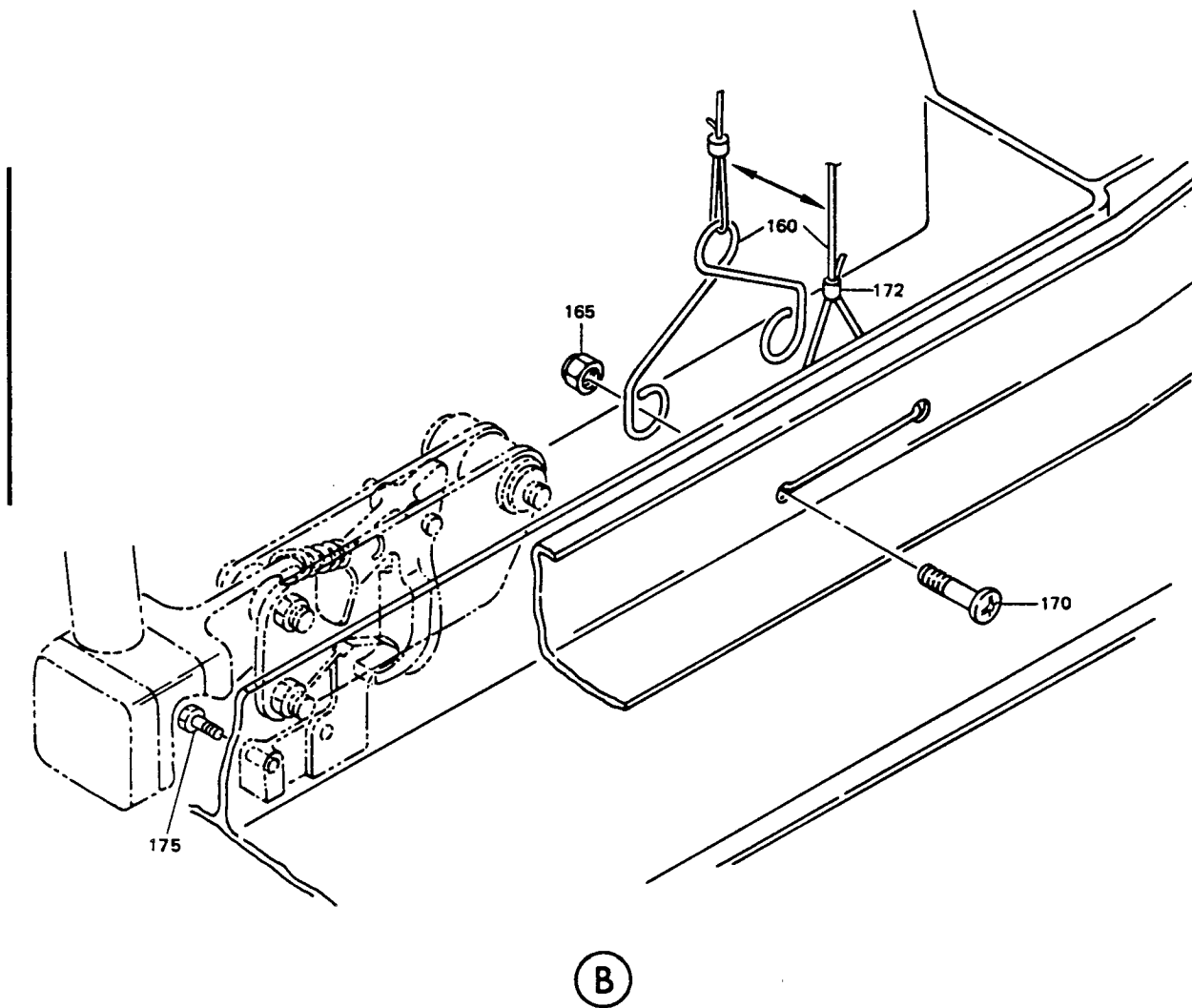


Passenger Service Unit Assembly
 Figure 1103 (Sheet 1)

BOEING 
COMMERCIAL JET
OVERHAUL MANUAL



Passenger Service Unit Assembly, Forward 2/3
Figure 1103 (Sheet 2)



BOEING 
COMMERCIAL JET
OVERHAUL MANUAL

FIG. & ITEM NO.	PART NO.	AIRLINE PART NUMBER	N O M E N C L A T U R E							USE CODE	QTY PER ASSY
			1	2	3	4	5	6	7		
1103-	65-86413-85		PASSENGER SERVICE UNIT ASSY, FWD 2/3							A	RF
	65-86413-86		PASSENGER SERVICE UNIT ASSY, FWD 2/3							C	
	65-86413-90		PASSENGER SERVICE UNIT ASSY, FWD 2/3							D	
	65-86413-93		PASSENGER SERVICE UNIT ASSY, FWD 2/3							B	
5	65-86413-25		. TAPE								AR
10	65-80172-7		. COVER, OXYGEN BOX							AB	1
10	65-80172-8		. COVER, OXYGEN BOX							CD	1
15	BAC27DPA489		. PLACARD (FRENCH)								1
20	63-10155		. RETAINER, COIL								8
25	69-64747-1		. GUIDE, TUBE							ED	1
30	289-701-27		. MASK, OXYGEN, V92114 (BOEING 10-60137-49)								4
35	61-23100-8		. WIRE BUNDLE								1
40	NAS601-7P		. SCREW							AC	1
40	NAS601-7P		. SCREW							BD	2
42	BACS12CB08-8		. SCREW								2
45	AN960PD6L		. WASHER								2
47	AN960PD8		. WASHER								2
50	BACN10JC08		. NUT								2
55	BACC10DK		. CLAMP *[1]								4
60	NAS601-6P		. SCREW								2
65	AN960PD6L		. WASHER								2
70	NAS549-8		. WASHER								AR
75	69-61466-4		. SPEAKER ASSY							BD	1
80	8-3282		. . SPEAKER, V34263								1
80	C8TS-C8800		. . SPEAKER, V32001 (OPT)								1
85	NAS514P1032-10		. . SCREW								7
86	NAS43DD3-16		. . WASHER SPACER								7
90	AN960C10L		. . WASHER								7
95	BACN10JC3		. . NUT								7
100	65-61466-3		. . TAPE SEALING								AR
105	69-62320-1		. . MOUNT ASSY SPEAKER								1
110	800000095-1		. BASE, V05617 (BOEING 10-61892-1)								1
115	ZH833-39		. HOSE, OXYGEN, V02217 (BOEING 10-60174-39)								1
115	37001-39		. HOSE, OXYGEN, V24984 (BOEING 10-60174-39)								1
120	NAS602-8P		. SCREW								1
125	BACN10FX83		. NUT								1

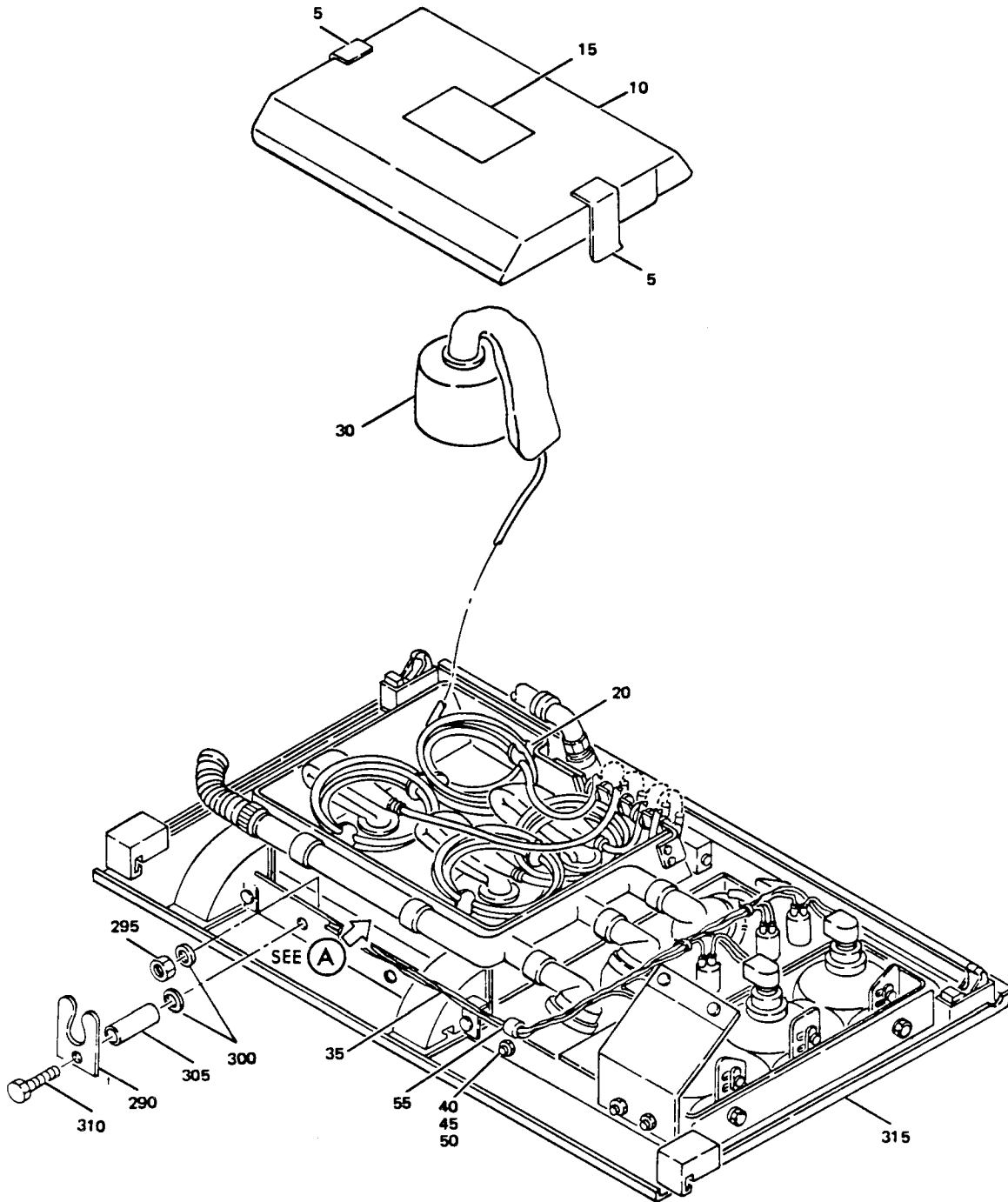
BOEING 
COMMERCIAL JET
OVERHAUL MANUAL

65-86413
DASH NUMBERS LIMITED

FIG. & ITEM NO.	PART NO.	AIRLINE PART NUMBER	N O M E N C L A T U R E							USE CODE	QTY PER ASSY
			1	2	3	4	5	6	7		
1103-130	BACCL0DK7		.								1
135	BACF20BA1		.								1
140	115013-01		.						AB		1
140	802078-00		.						AB		1
140	115013-02		.						CD		1
140	802078-01		.						CD		1
145	BACSI2CB3-22		.								2
145	NAS603-22P		.								2
150	BACSI2CB3-20		.								1
150	NAS603-20P		.								1
155	MS35335-22		.								1
160	69-63824-3		.								1
160	69-63824-1		.								1
165	BACN10JC08		.								2
170	NAS602-5P		.								2
172	MS3367-1-9		.								1
175	BACSI2CB04-9		.								2
180	69-64747-2		.								1
185	BACN10JC08		.						AC		1
190	AN960PD8L		.						AC		1
200	BACSI2CB08-9P		.						AC		1
205	65-86413-26		.								AR
210	65-86412-7		.						AB		1
210	65-86412-8		.						CD		1

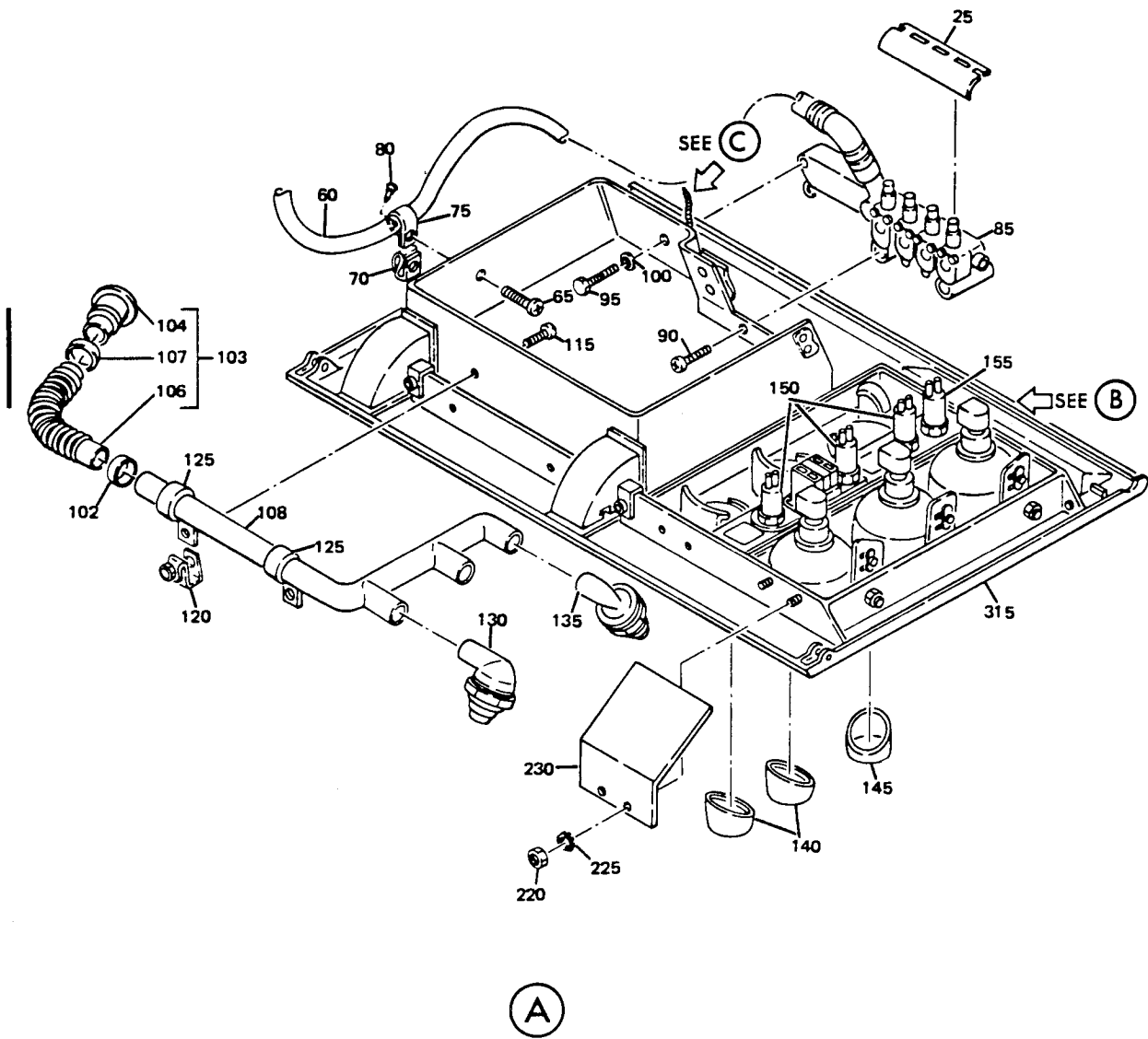
*[1] FIT TO SIZE

BOEING 
COMMERCIAL JET
OVERHAUL MANUAL

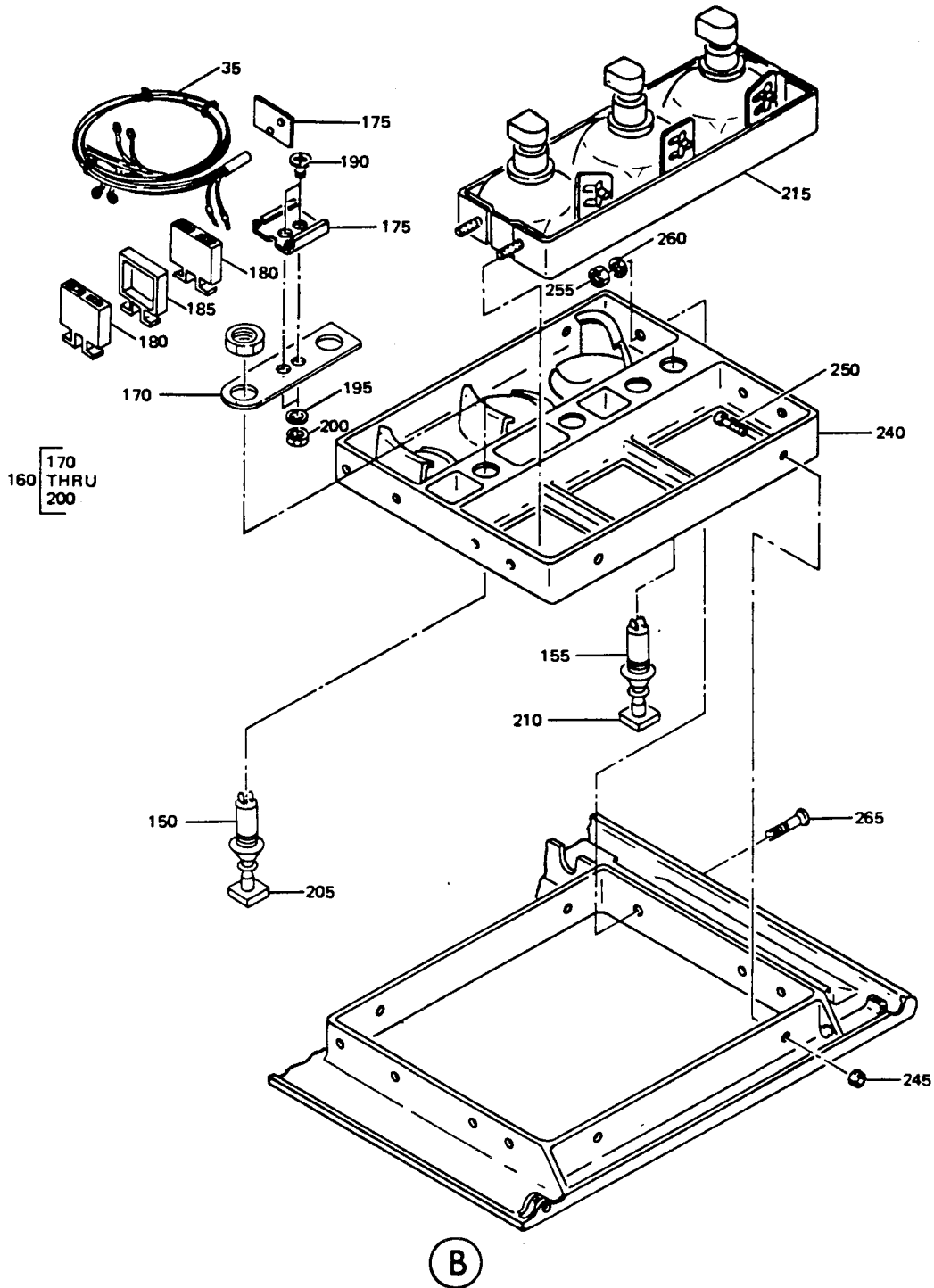


BOEING
COMMERCIAL JET
OVERHAUL MANUAL

65-86413
 DASH NUMBERS LIMITED

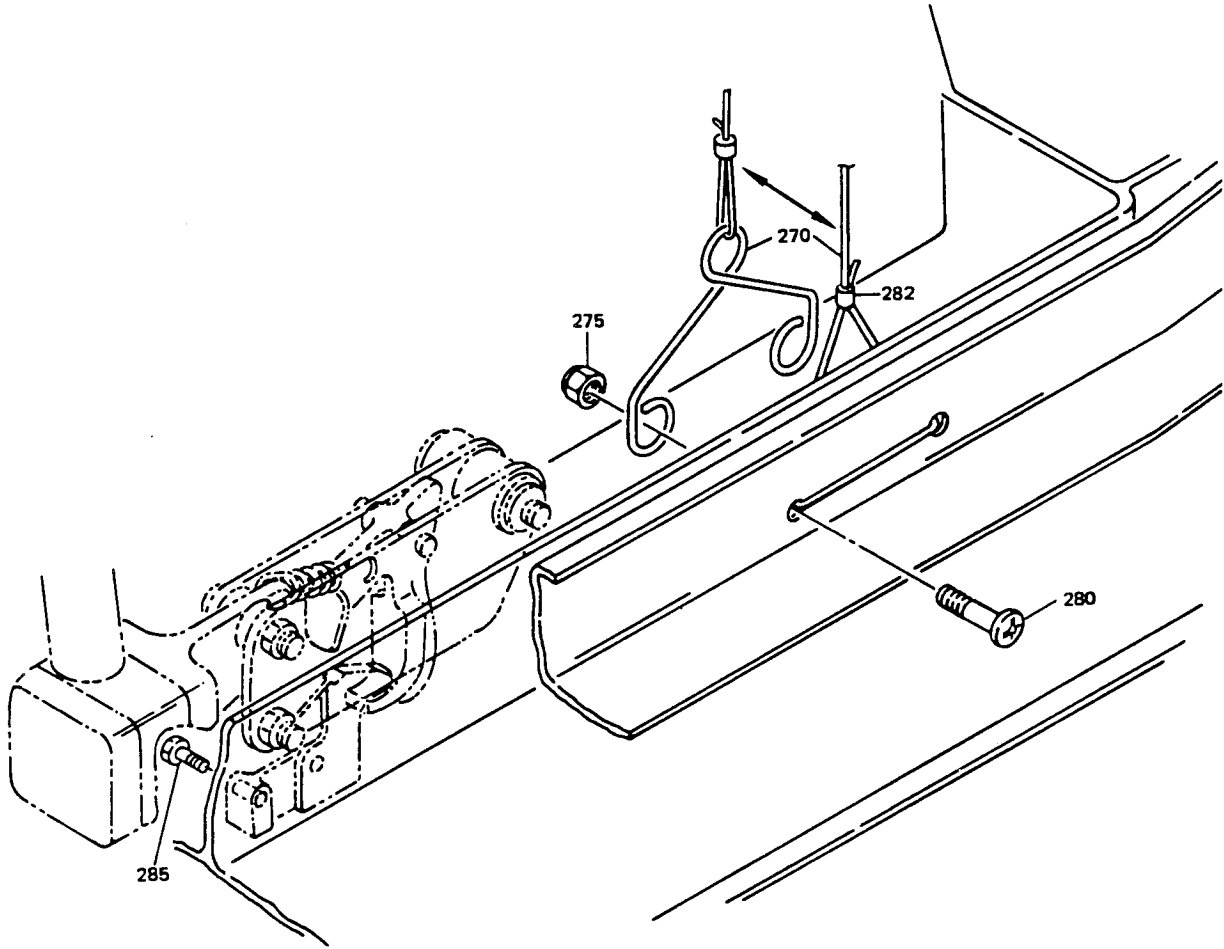


Passenger Service Unit Assembly, Aft 2/3
 Figure 1104 (Sheet 2)



BOEING 
COMMERCIAL JET
OVERHAUL MANUAL

65-86413
DASH NUMBERS LIMITED



(C)

OVERHAUL MANUAL

FIG. & ITEM NO.	PART NO.	AIRLINE PART NUMBER	N O M E N C L A T U R E							USE CODE	QTY PER ASSY
			1	2	3	4	5	6	7		
1104-	65-86413-94		PASSENGER SERVICE UNIT ASSY AFT 2/3							A	RF
	65-86413-95		PASSENGER SERVICE UNIT ASSY AFT 2/3							B	RF
	65-86413-97		PASSENGER SERVICE UNIT ASSY AFT 2/3							C	RF
	65-86413-98		PASSENGER SERVICE UNIT ASSY AFT 2/3							D	RF
	65-86413-103		PASSENGER SERVICE UNIT ASSY AFT 2/3							E	RF
5	65-86413-25		. TAPE								AR
10	65-80172-7		. COVER, OXYGEN BOX							ACE	1
10	65-80172-8		. COVER, OXYGEN BOX							BD	1
15	BAC27DPA489		. PLACARD (FRENCH)							AB	1
15	BAC27DPA465		. PLACARD (ENGLISH)							CDE	1
20	63-10155		. RETAINER, COIL								8
25	69-64747-1		. GUIDE TUBE							A-D	1
30	289-701-27		. MASK, OXYGEN, V92114 (BOEING 10-60137-49)								4
35	61-23100-8		. WIRE BUNDLE								1
35	61-23100-5		. WIRE BUNDLE (OPT)							CD	1
40	BACSL2CB08-8		. SCREW								1
45	AN960PD8		. WASHER								1
50	BACNLOJC08		. NUT								1
55	BACCL0DK		. CLAMP *[2]								1
60	37001-39		. HOSE, OXYGEN, V24984 (BOEING 10-60174-39)							A-D	1
60	37001-40		. HOSE, OXYGEN, V24984 (BOEING 10-60174-40)							E	1
65	NAS602-8P		. SCREW								1
70	BACNLOFX83		. NUT								1
75	BACCL0DK7		. CLAMP								1
80	BACP20BA1		. PLUG								1
85	115013-01		. MANIFOLD ASSY, V16827 (BOEING 10-60513-7)							ACE	1
85	802078-00		. MANIFOLD ASSY, V53655 (BOEING 10-60513-11)(OPT)							ACE	1
85	115013-02		. MANIFOLD ASSY, V16827 (BOEING 10-60513-8)							BD	1
85	802078-01		. MANIFOLD ASSY, V53655 (BOEING 10-60513-12)(OPT)							BD	1
90	BACSL2CB3-22		. SCREW								2
90	NAS603-22		. SCREW (OPT)								2
95	BACSL2CB3-20		. SCREW								1
95	NAS603-20P		. SCREW (OPT)								1
100	MS35335-32		. WASHER								1
102	MS3367-4-9		. STRAP (PREF)								1
102	6203		. CLAMP, V81646 (OPT)								1
103	69-68932-1		. DUCT ASSY, AIR (PREF)								1
103	69-68932-2		. DUCT ASSY, AIR (OPT)								1
104	69-64738-1		. FITTING ASSY, QUICK-DISCONNECT								1

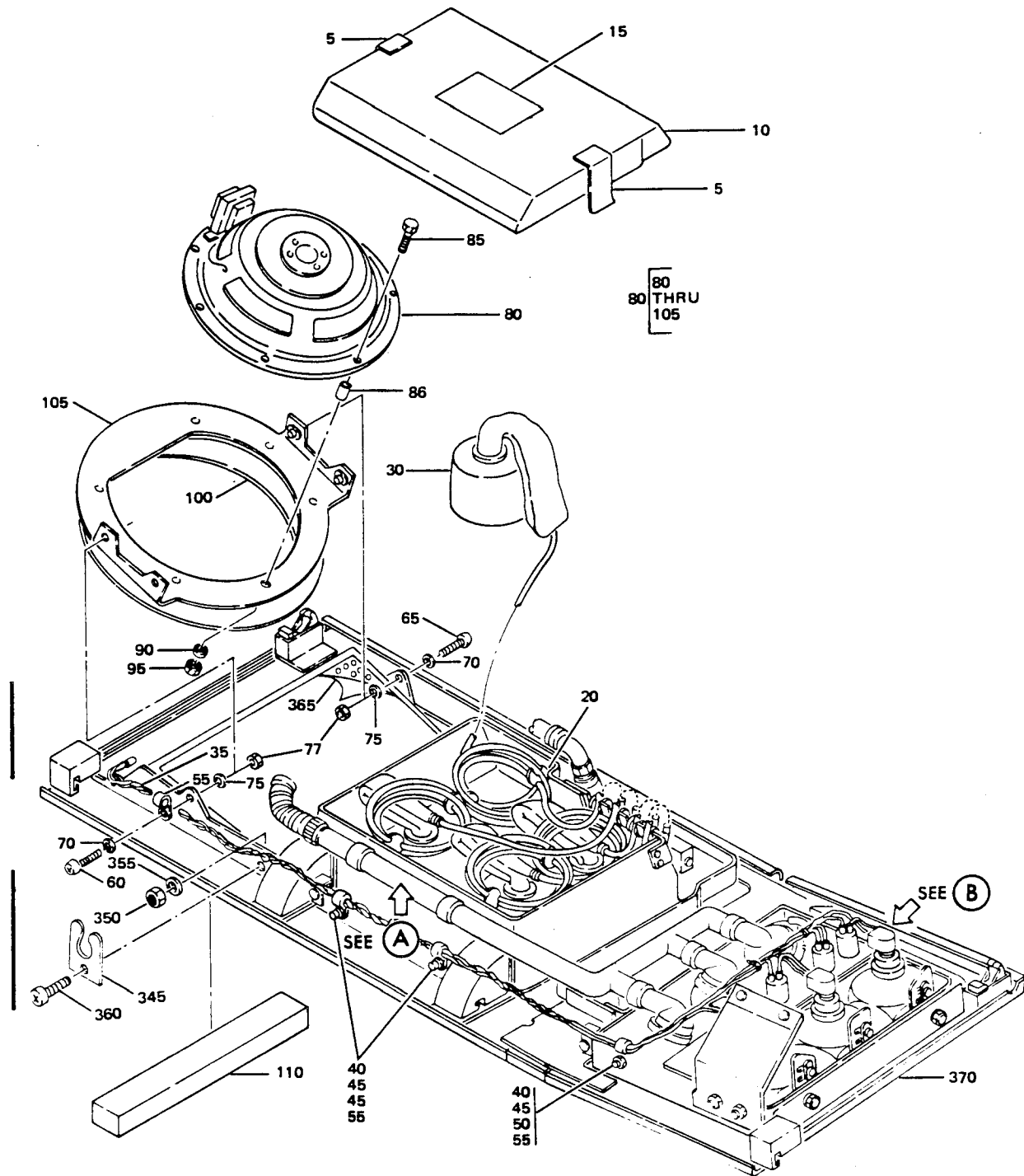
OVERHAUL MANUAL

FIG. & ITEM NO.	PART NO.	AIRLINE PART NUMBER	N O M E N C L A T U R E							USE CODE	QTY PER ASSY
			1	2	3	4	5	6	7		
1104-											
106	BE406-3										1
106	AD604-3										1
107	MS3367-4-9										1
108	69-62660-2										1
115	NAS602-8P										2
120	BACN10FX83										2
125	BACCL0DK12										2
130	116999-15C										2
135	120646-1C										1
140	65-79165-31										2
145	65-79165-32										1
150	710907-13A2										3
155	710906-13A1										1
160	69-65298-1										1
170	69-65258-1										1
175	AMY0110T8										1
180	BACM15C1A.										2
185	YHLZ1C-8										1
190	BACR15DA6-2										2
190	NAS602-7										2
195	AN960PD8L										2
200	BACN10JC08										2
205	691212-13A1-1										3
210	690623A1-4								AB		1
210	932501-015								CDE		1
215	10-0429-1								ACE		1
215	10-0429-2								BD		1
220	MS35649-282										4
220	BACN10JC08										4
225	MS35335-31										4
230	69-65414-1										1
240	65-79165-5								ACE		1
240	65-79165-6								BD		1
245	BACN10JC08										4
250	NAS514P832-5P										4
255	BACN10JC06										1
260	AN960PD6L										1
265	NAS601-8P										1
270	69-63824-3										1
270	69-63824-1										1

OVERHAUL MANUAL

FIG. & ITEM NO.	PART NO.	AIRLINE PART NUMBER	N O M E N C L A T U R E							USE CODE	QTY PER ASSY
			1	2	3	4	5	6	7		
1104-											
275	BACN10JC08										2
280	NAS602-5P										2
282	MS3367-1-9										1
285	BACSL2CB04-9										2
290	69-64747-2										1
295	BACN10FX84										1
300	AN960P8L										1
305	NAS42DD6-48										1
310	NAS602-20P										1
315	65-86412-9									ACE	1
315	65-86412-10									BD	1

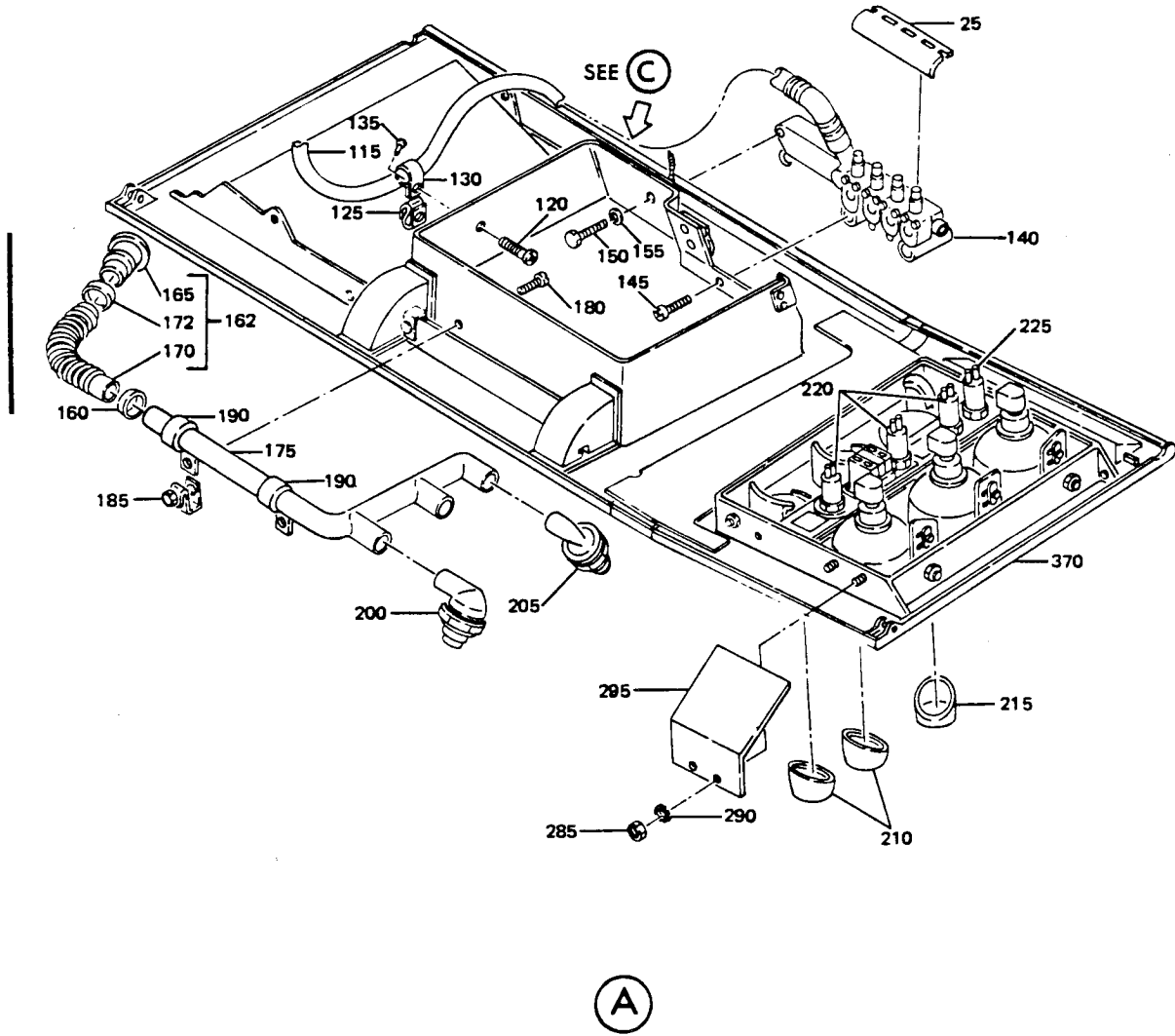
- *[1] NUTS, WASHERS & SCREWS OPTIONAL TO RIVETS
- *[2] FIT TO SIZE



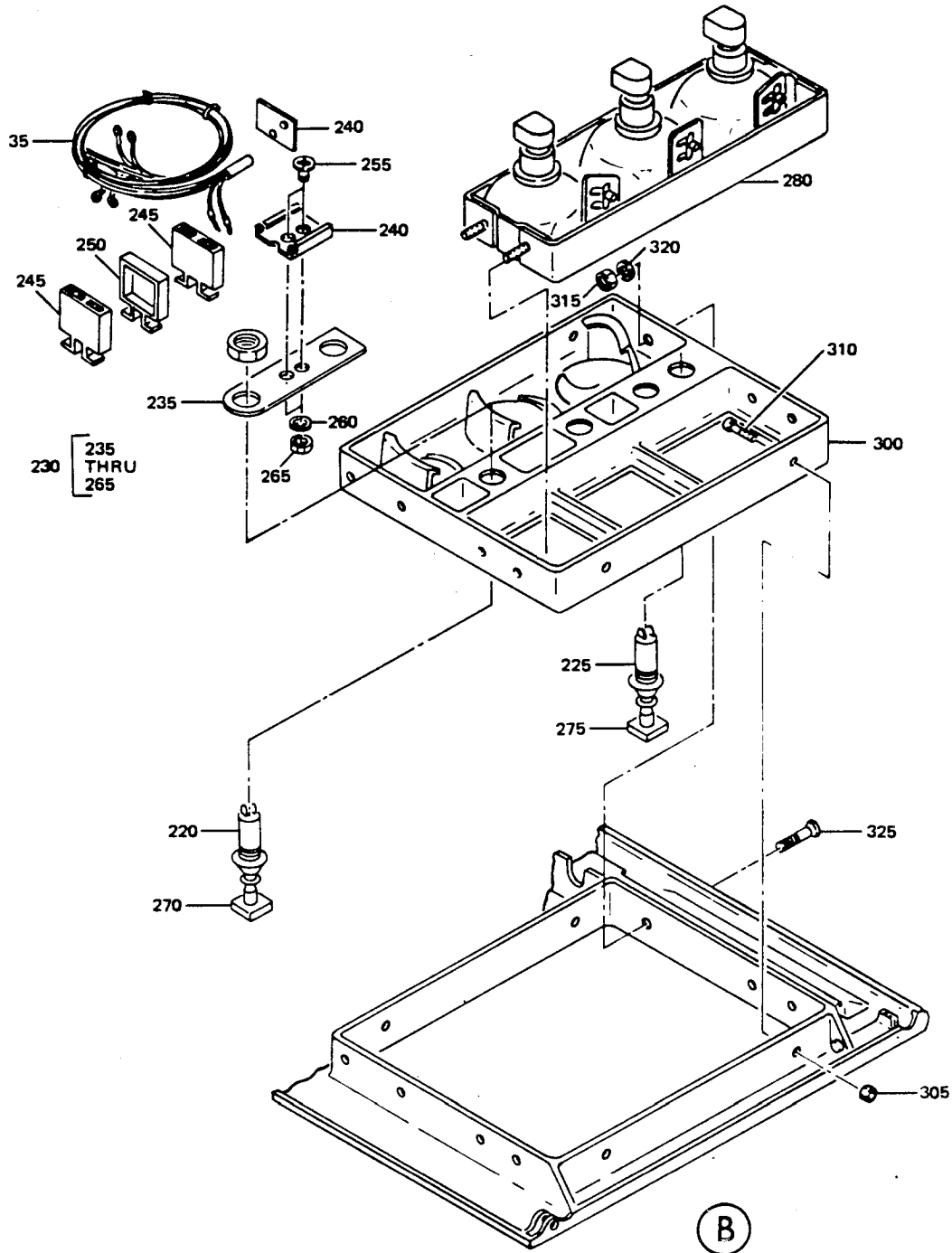
Passenger Service Unit Assembly
Figure 1105 (Sheet 1)

BOEING 
COMMERCIAL JET
OVERHAUL MANUAL

65-86413
DASH NUMBERS LIMITED

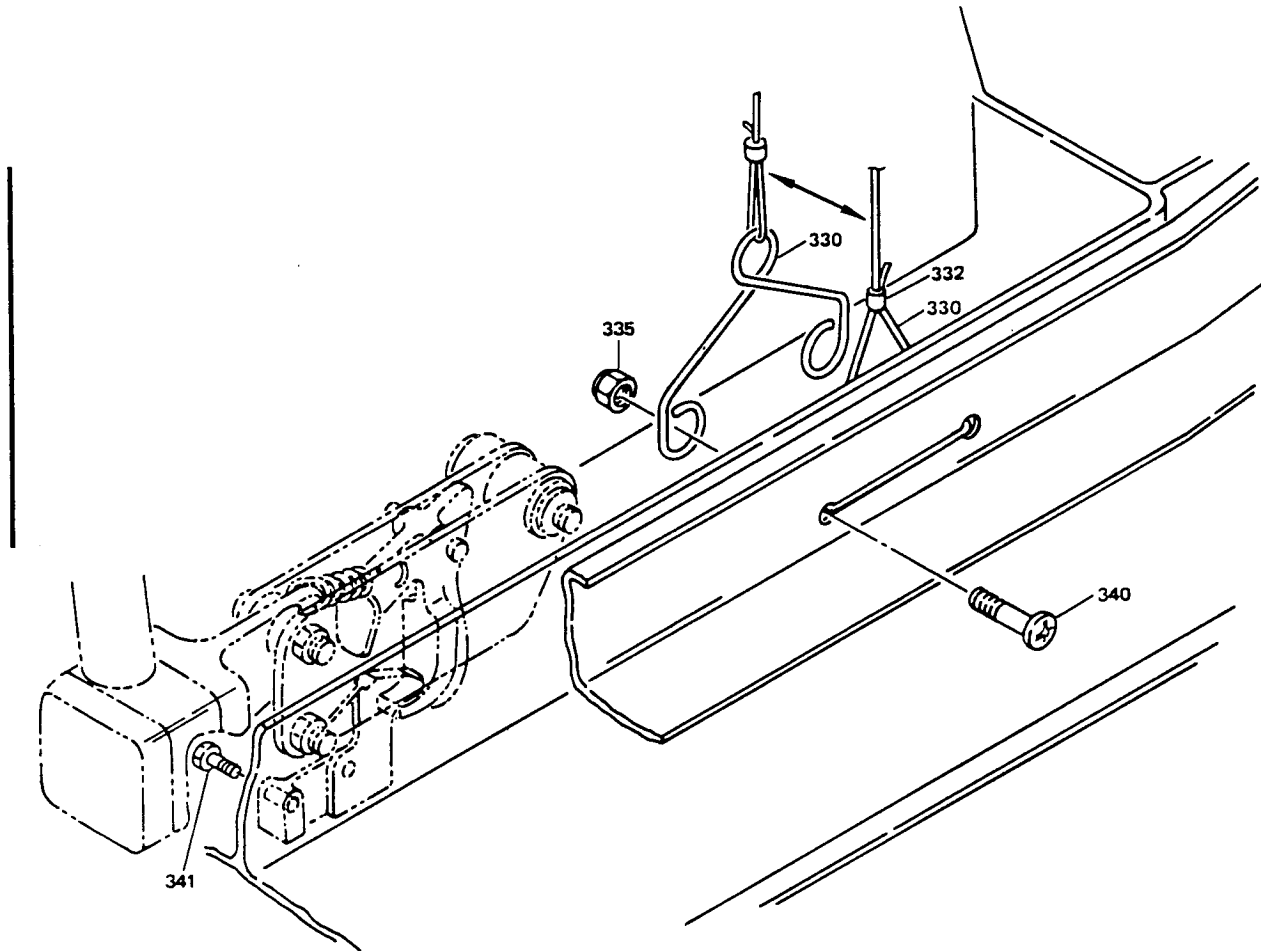


Passenger Service Unit Assembly
Figure 1105 (Sheet 2)



BOEING 
COMMERCIAL JET
OVERHAUL MANUAL

65-86413
DASH NUMBERS LIMITED



(C)

Passenger Service Unit Assembly
Figure 1105 (Sheet 4)

BOEING 
COMMERCIAL JET
OVERHAUL MANUAL

FIG. & ITEM NO.	PART NO.	AIRLINE PART NUMBER	N O M E N C L A T U R E						USE CODE	QTY PER ASSY
			1	2	3	4	5	6		
1105-	65-86413-81								A	RF
	65-86413-82								D	RF
	65-86413-87								B	RF
	65-86413-88								E	RF
	65-86413-89								C	RF
	65-86413-91								F	RF
5	65-86413-25									AR
10	65-80172-7								ABC	1
10	65-80172-8								DEF	1
15	BAC27DPA465								AD	1
15	BAC27DPA489								BCEF	1
20	63-10155									8
25	69-64747-1									1
30	289-701-27									4
35	61-23100-8									1
40	BACS12CB08-8									3
45	AN960PD8									3
50	BACN10FX83									3
55	BACC10DK									4
60	NAS601-7P									1
65	BACS12CB06-6P									2
70	AN960PD6L									3
75	NAS549-8								ABE	AR
77	BACN10JC06								CDF	4
80	69-61466-4								ABE	1
82	8-3282									1
82	C8TS-C8800									1
85	NAS514F1032-10									7
86	NAS43DD3-16									7
90	AN960C10L									7
95	BACN10JC3									7
100	65-61466-3									AR
105	69-62320-1									1
110	800000095-1									1
115	ZH833-39								BCEF	1
115	37001-39								BCEF	1
115	37001-40-1								AD	1
115	ZH833-40								AD	1

BOEING 
COMMERCIAL JET
OVERHAUL MANUAL

65-86413
DASH NUMBERS LIMITED

FIG. & ITEM NO.	PART NO.	AIRLINE PART NUMBER	N O M E N C L A T U R E						USE CODE	QTY PER ASSY
			1	2	3	4	5	6		
1105-115	37001-40								AD	1
120	NAS602-8P									1
125	BACN10FX83									1
130	BACC10DK7									1
135	BACF20BAL									1
140	115013-01								ABC	1
140	802078-00								ABC	1
140	115013-02								DEF	1
140	802078-01								DEF	1
145	BACS12CB3-22									2
145	NAS603-22P									2
150	BACS12CB3-20									1
150	NAS603-20P									1
155	MS35335-32									1
160	MS3367-4-9									1
160	6203									1
162	69-68932-1									1
162	69-68932-2									1
165	69-64738-1									1
170	BE406-3									1
170	AD604-3									1
172	MS3367-4-9									1
175	69-62660-2									1
180	NAS602-8P									2
185	BACN10FX83									2
190	BACC10DK12									2
200	116999-15C									2
205	120646-1C									1
210	65-79165-31									2
215	65-79165-32									1
220	710907-13A2									3
225	710906-13A1									1
230	69-65298-1									1
235	69-65258-1									1
240	AMY0110T8									1

BOEING 
COMMERCIAL JET
OVERHAUL MANUAL

FIG. & ITEM NO.	PART NO.	AIRLINE PART NUMBER	N O M E N C L A T U R E							USE CODE	QTY PER ASSY
			1	2	3	4	5	6	7		
1105-											
245	BACM15C1A										2
250	YHLZ1C8										1
255	BACR15DA6-2										2
255	NAS602-7										2
260	AN960PD8L										2
265	BACN10JC08										2
270	691212-13A1-1										3
275	690623A1-4										1
280	10-0429-1								ABC		1
280	10-0429-2								DEF		1
285	MS35649-282										4
285	BACN10JC08										4
290	MS35335-31										4
295	69-65414-1										1
300	65-79165-5								ABC		1
300	65-79165-6								DEF		1
305	BACN10JC08										4
310	NAS514P832-5P										4
315	BACN10JC06										1
320	AN960PD6L										1
325	NAS601-8P										1
330	69-63824-3										1
330	69-63824-1										1
332	MS3367-1-9										1
335	BACN10JC08										2
340	NAS602-5P										2
341	BACS12CB04-9										2
345	69-64747-2										1
350	BACN10JC08								DF		1
355	AN960PD6L								ABCE		1
355	AN960PD8L								DF		1
360	NAS601-7P								ABCE		1
360	BACS12CB08-9P								DF		1
360	NAS602-20P										DELETED
361	NAS42DD6-48										DELETED
365	65-86413-26										AR
370	65-86412-21								BC		1
370	65-86412-22								EF		1
370	65-86412-23								A		1
370	65-86412-24								D		1

BOEING 
COMMERCIAL JET
OVERHAUL MANUAL

65-86413

- *[1] USE THREE NUTS, WASHERS AND SCREWS WHEN SPEAKER IS NOT INSTALLED
- *[2] SIZE TO FIT
- *
- *[3] NUTS, WASHERS AND SCREW OPTIONAL TO RIVET

REFERENCE DESIGNATION INDEX (SEE SCHEMATIC DIAGRAM 25-20-00)		
REFERENCE DESIGNATION	PART NUMBER	FIGURE, ITEM NUMBERS
D600P	BACC45FT14-15P	---
D3100		
L3000	10-0429-1	1105 (280)
L3001	10-0429-2	1105 (280)
L3002	800000095-1	1102 (110), 1105 (110)
L3002	800000095-2	1101 (5)
M3001	C8TS-C8800	1101 (70), 1103, 1105 (80)
M3001	8-32-82	1101 (70), 1103, 1105 (80)
S3000	710906-13A1	1104 (155), 1105 (225)
S3001-S3003	710907-13A2	1104 (150), 1105 (220)
T3000	69-65298-1	1104 (160), 1105 (230)

BOEING 
COMMERCIAL JET
OVERHAUL MANUAL

VENDORS

V02217 PURITAN-BENNETT AERO SYSTEMS DIV., 111 PENN ST, EL SEGUNDO,
CALIFORNIA 90245

V03088 ARO CORP., 17101 E. GALE AVE., P.O. BOX 1800, CITY OF INDUSTRY,
CALIFORNIA 91749

V05399 BEMCO INC., P.O. BOX 68, CENTERTON, ARKANSAS 72719

V05617 BELL INDUSTRIES, FARWEST MFG. DIV., 12410 S.E. 32ND ST., BELLEVUE,
WASHINGTON 98005

V09922 BURNDY CORP., RICHARDS AVE, NORWALK, CONNECTICUT 06852

V16827 PURITAN-BENNETT AERO SYSTEMS, 10800 PFLUMM RD., LENEXA, KANSAS 66211

V17744 LUMNATOR DIV., GULTON INDUSTRIES INC., 1200 E. DALLAS N. PARKWAY,
PLANO, TEXAS 75074

V21868 H.K. PORTER CO., INC., THERMOID DIV., GOVERNMENT SALES OFFICE, 1627
PORTER BLDG., 601 GRANT ST., PITTSBURGH, PENNSYLVANIA 15219

V24984 HYDRAFLOW SUPPLY INC., 13259 E. 166TH ST., CERRITOS, CALIFORNIA 90701

V34263 CTS OF BROWNSVILLE INC., 1100 ROOSEVELT ST., BROWNSVILLE, TEXAS 78520

V32001 PEMCOR INC., JENSEN SOUND LABORATORY, 43100 TRANSWORLD RD., SCHILLER
PARK, ILLINOIS 60176

V53655 SCOTT AVIATION DIV. OF A-T-O INC., 225 ERIE ST., LANCASTER, NEW YORK
14086

V71482 CLARE CP AND CO., 3101 PRATT BLVD., CHICAGO, ILLINOIS 60645

V72914 GRIMES MFG CO., 515 N. RUSSELL, URBANA, OHIO 43078

V81646 PARKER-HANNIFIN CORP., CLAMP AND FLASHER DIV., 1000 PENNSYLVANIA AVE.,
BROOKLYN, NEW YORK 11207

V92114 SIERRA ENGINEERING CO. DIV OF CAPTECH INC., 123 E. MONTECITO AVE,
SIERRA MADRE, CALIFORNIA 91024

BOEING 
COMMERCIAL JET
OVERHAUL MANUAL

Part No.	Fig. and Index No.	Qty. per Assy.	Part No.	Fig. and Index No.	Qty. per Assy.
AD604-3	1104-106	1	BACN10FX83	1102-40	1
AD604-3	1105-170	1	BACN10FX83	1103-125	1
AMY0110T8	1104-175	1	BACN10FX83	1104-20	1
AMY0110T8	1105-240	1	BACN10FX83	1104-120	2
AN960C10L		AR	BACN10FX83	1105-50	3
AN960D8L		AR	BACN10FX83	1105-125	1
AN960PD6L		AR	BACN10FX83	1105-185	2
AN960PD8		AR	BACN10FX84	1101-50	1
			BACN10FX84	1104-295	1
BACC10DK	1101-30	4	BACP20BA1	1102-50	1
BACC10DK	1103-55	4	BACP20BA1	1103-135	1
BACC10DK	1104-55	1	BACP20BA1	1104-80	1
BACC10DK	1105-55	4	BACP20BA1	1105-135	1
BACC10DK12	1104-125	2	BACR15DA6-2	1104-190	2
BACC10DK12	1105-190	2	BACR15DA6-2	1105-255	2
BACC10DK7	1102-45	1	BACS12CB04-9	1102-90	2
BACC10DK7	1103-130	1	BACS12CB04-9	1103-175	2
BACC10DK7	1104-75	1	BACS12CB04-9	1104-285	2
BACC10DK7	1105-130	1	BACS12CB04-9	1105-341	2
BACM15C1A	1104-180	2	BACS12CB06-6P	1105-65	2
BACM15C1A	1105-245	2	BACS12CB06-7P	1101-75	1
BACN10JCO6	1104-255	1	BACS12CB08	1101-25	
BACN10JCO6	1105-77	4	BACS12CB08-20	1101-70	1
BACN10JCO6	1105-315	1	BACS12CB08-5P	1102-85	2
BACN10JCO8	1101-55		BACS12CB08-8	1103-42	2
BACN10JCO8	1102-80	2	BACS12CB08-8	1104-40	1
BACN10JCO8	1103-50	2	BACS12CB08-8	1105-40	3
BACN10JCO8	1103-165	2	BACS12CB08-9P	1103-200	1
BACN10JCO8	1103-185	1	BACS12CB3-20	1102-65	1
BACN10JCO8	1104-50	1	BACS12CB3-20	1103-50	1
BACN10JCO8	1104-200	2	BACS12CB3-20	1104-95	1
BACN10JCO8	1104-220	4	BACS12CB3-20	1105-150	1
BACN10JCO8	1104-245	4	BACS12CB3-22	1102-60	2
BACN10JCO8	1104-275	2	BACS12CB3-22	1103-145	2
BACN10JCO8	1105-265	2	BACS12CB3-22	1104-90	2
BACN10JCO8	1105-285	4	BACS12CB3-22	1105-145	2
BACN10JCO8	1105-305	4	BAC27DPA465	1102-15	1
BACN10JCO8	1105-335	2	BAC27DPA465	1104-15	1
BACN10JCO8	1105-350	1	BAC27DPA465	1105-15	1
BACN10JOC3	1101-115	7	BAC27DPA489	1002-15	1
BACN10JOC3	1103-95	7	BAC27DPA489	1103-15	1
BACN10JOC3	1105-95	7	BAC27DPA489	1104-15	1
BACN10JOC6	1101-80		BAC27DPA489	1105-15	1

OVERHAUL MANUAL

Part No.	Fig. and Index No.	Qty. per Assy.
BE406-1	1104-106	1
BE406-3	1105-170	1
C8TS-C8800	1101-95	1
C8TS-C8800	1103-80	1
C8TS-C8800	1105-82	1
MS3367-1-9		AR
MS3367-4-9		AR
MS35335-22		AR
MS35335-31		AR
MS35335-32		AR
MS35649-282		AR
NAS42DD6-48		AR
NAS43DD3-16		AR
NAS549-8		AR
NAS514P1032-10		AR
NAS601-6P		AR
NAS601-7P		AR
NAS601-8P		AR
NAS602-20P		AR
NAS602-5P		AR
NAS602-7		AR
NAS602-8P		AR
NAS603-20P		AR
NAS603-22		AR
NAS603-22P		AR
ZH833-39	1102-35	1
ZH833-39	1103-115	1
ZH833-40	1105-115	1
YHLZ1C-8	1104-185	1
YHLZ1C-8	1105-250	1
10-0429-1	1104-215	1
10-0429-1	1105-280	1
10-0429-2	1104-215	1
10-0429-2	1105-280	1
10-60137-49	1102-30	4
10-60137-49	1103-30	4
10-60137-49	1104-30	4

Part No.	Fig. and Index No.	Qty. per Assy.
10-60137-44	1105-30	4
10-60141-18	1104-130	2
10-60141-18	1105-200	2
10-60141-19	1104-135	1
10-60141-19	1104-205	1
10-60174-39	1102-35	1
10-60174-39	1103-115	1
10-60174-39	1104-60	1
10-60174-39	1105-115	1
10-60174-40	1102-35	1
10-60174-40	1104-60	1
10-60174-40	1105-115	1
10-60513-11	1102-55	1
10-60513-11	1103-140	1
10-60513-11	1104-85	1
10-60513-11	1105-140	1
10-60513-12	1102-55	1
10-60513-12	1103-140	1
10-60513-12	1104-85	1
10-60513-12	1105-140	1
10-60513-7	1102-55	1
10-60513-7	1103-140	1
10-60513-7	1104-85	1
10-60513-7	1105-140	1
10-60513-8	1102-55	1
10-60513-8	1103-140	1
10-60513-8	1104-85	1
10-60513-8	1105-140	1
10-61779-1	1104-215	1
10-61779-1	1105-280	1
10-61779-2	1104-215	1
10-61779-2	1105-280	1
10-61892-1	1103-110	1
10-61892-2	1101-5	1
115013-01	1102-55	1
115013-01	1103-140	1
115013-01	1104-85	1
115013-01	1105-140	1
115013-02	1102-55	1
115013-02	1103-140	1
115013-02	1104-85	1
115013-02	1105-140	1

OVERHAUL MANUAL

Part No.	Fig. and Index No.	Qty. per Assy.
116999-15C	1104-130	2
116999-15C	1105-200	2
120646-1C	1104-135	1
120646-1C	1105-205	1
289-701-27	1102-30	4
289-701-27	1103-30	4
289-701-27	1104-30	4
289-701-27	1105-30	4
37001-39	1102-35	1
37001-39	1103-115	1
37001-39	1104-60	1
37001-39	1105-115	1
37001-40	1104-60	1
37001-40	1105-115	1
37001-40-1	1102-35	1
37001-40-1	1105-115	1
61-23100-5	1104-35	1
61-23100-8	1101-10	1
61-23100-8	1103-35	1
61-23100-8	1104-35	1
61-23100-8	1105-35	1
6203	1104-102	1
6203	1105-160	1
63-10155	1102-20	8
63-10155	1103-20	8
63-10155	1104-20	8
63-10155	1105-20	8
65-61466-3	1101-125	AR
65-61466-3	1103-100	AR
65-61466-3	1105-100	AR
65-79165-31	1104-140	2
65-79165-31	1105-210	1
65-79165-32	1104-145	1
65-79165-32	1105-215	1
65-79165-5	1104-240	1
65-79165-5	1105-300	1
65-79165-6	1104-240	1

Part No.	Fig. and Index No.	Qty. per Assy.
65-79165-6	1105-300	1
65-80172-7	1102-10	1
65-80172-7	1103-10	1
65-80172-7	1104-20	1
65-80172-7	1105-10	1
65-80172-8	1102-10	1
65-80172-8	1103-10	1
65-80172-8	1104-10	1
65-80172-8	1105-10	1
65-86412-1	1101-130	1
65-86412-10	1104-315	1
65-86412-2	1101-130	1
65-86412-21	1105-370	1
65-86412-22	1105-370	1
65-86412-23	1105-370	1
65-86412-24	1105-370	1
65-86412-3	1102-95	1
65-86412-4	1102-95	1
65-86412-7	1103-210	1
65-86412-8	1103-210	1
65-86412-9	1104-315	1
65-86413-101	1102	RF
65-86413-102	1102	RF
65-86413-103	1104	RF
65-86413-25	1102-5	AR
65-86413-25	1103-5	AR
65-86413-25	1104-5	AR
65-86413-25	1105-5	AR
65-86413-26	1103-205	AR
65-86413-26	1105-365	AR
65-86413-81	1105	RF
65-86413-82	1105	RF
65-86413-83	1101	RF
65-86413-84	1101	RF
65-86413-85	1103	RF
65-86413-86	1103	RF
65-86413-87	1105	RF
65-86413-88	1105	RF
65-86413-89	1105	RF
65-86413-90	1103	RF
65-86413-91	1105	RF
65-86413-92	1102	RF
65-86413-93	1103	RF
65-86413-94	1104	RF

BOEING
COMMERCIAL JET
OVERHAUL MANUAL

65-86413
DASH NUMBERS LIMITED

Part No.	Fig. and Index No.	Qty. per Assy.	Part No.	Fig. and Index No.	Qty. per Assy.
65-86413-05	1104	RF	691212-13A1-1	1105-270	3
65-86413-97	1104	RF	710906-13A1	1104-155	1
65-86413-98	1104	RF	710906-13A1	1105-225	1
69-61466-4	1101-90	1	710907-13A2	1104-150	3
69-61466-4	1103-75	1	710907-13A2	1105-220	3
69-61466-4	1105-80	1	8-3282	1101-95	1
69-62320-1	1101-120	1	8-3282	1103-80	1
69-62320-1	1103-105	1	8-3282	1105-82	1
69-62320-1	1105-105	1	800000095-2	1101-5	1
69-62660-2	1104-108	1	800000095-1	1103-110	1
69-62660-2	1105-175	1	800000095-1	1105-110	1
69-63824-1	1101-15	1	802078-00	1102-55	1
69-63824-1	1102-75	1	802078-00	1103-140	1
69-63824-1	1103-160	1	802078-00	1104-85	1
69-63824-1	1104-270	1	802078-00	1105-140	1
69-63824-1	1105-330	1	802078-01	1102-55	1
69-63824-3	1102-75	1	802078-01	1103-140	1
69-63824-3	1103-160	1	802078-01	1104-85	1
69-63824-3	1104-270	1	802078-01	1105-140	1
69-63824-3	1105-330	1	932501-015	1104-210	1
69-64738-1	1104-104	1			
69-64738-1	1105-165	1			
69-64747-1	1102-25	1			
69-64747-1	1103-25	1			
69-64747-1	1104-25	1			
69-64747-1	1105-25	1			
69-64747-2	1103-180	1			
69-64747-2	1104-290	1			
69-64747-2	1105-345	1			
69-65258-1	1104-170	1			
69-65258-1	1105-235	1			
69-65298-1	1104-160	1			
69-65298-1	1105-230	1			
69-65414-1	1104-230	1			
69-65414-1	1105-295	1			
69-68932-1	1104-103	1			
69-68932-1	1105-162	1			
69-68932-2	1104-103	1			
69-68932-2	1105-162	1			
690623A1-4	1104-210	1			
690623A1-4	1105-275	1			
691212-13A1-1	1104-205	1			