

~~BOEING~~ *Commercial Jet*
OVERHAUL MANUAL

TO: ALL HOLDERS OF PARTIAL SECTIONS PASSENGER SERVICE UNIT ASSEMBLY OVERHAUL
MANUAL, 25-20-16

REVISION NO. 1, DATED JAN 5/77

HIGHLIGHTS

DESCRIPTION OF CHANGE	TOPICS AFFECTED											
	D & O	D/Assy	Cleaning	Insp/Chk	Repair	Assy	F/C	Test	T/Shooting	S/Tools	Storage	IPL
Added numerical parts list index											X	

BOEING 
COMMERCIAL JET
OVERHAUL MANUAL

**PARTIAL SECTIONS PASSENGER SERVICE UNIT
ASSEMBLY**

25-20-16

BOEING P/N 65-82721-83, -84, -87 thru -94

AIRLINE P/N

THE FOLLOWING DIRECTIVES APPLY TO THIS SUBJECT:

BOEING SERVICE BULLETIN	BOEING TEMPORARY REVISION	OTHER DIRECTIVES	DATE DIRECTIVE INCORPORATED INTO TEXT

BOEING 
COMMERCIAL JET
OVERHAUL MANUAL

LIST OF EFFECTIVE PAGES					
* Indicates pages revised, added or deleted in latest revision					
F Indicates foldout pages - print one side only					
PAGE	DATE	PAGE	DATE	PAGE	DATE
25-20-16					
T-1	Jul 5/76				
T-2	BLANK				
* LEP-1	Jan 5/77				
LEP-2	BLANK				
T/C-1	Jul 5/76				
T/C-2	BLANK				
1	Jul 5/76				
2	Jul 5/76				
3	Jul 5/76				
4	Jul 5/76				
5	Jul 5/76				
6	Jul 5/76				
7	Jul 5/76				
8	Jul 5/76				
9	Jul 5/76				
10	Jul 5/76				
11	Jul 5/76				
12	Jul 5/76				
13	Jul 5/76				
14	Jul 5/76				
15	Jul 5/76				
16	Jul 5/76				
17	Jul 5/76				
18	Jul 5/76				
19	Jul 5/76				
20	BLANK				
21	Jul 5/76				
22	Jul 5/76				
23	Jul 5/76				
24	Jul 5/76				
25	Jul 5/76				
26	BLANK				
27	Jul 5/76				
28	Jul 5/76				
29	Jul 5/76				
30	Jul 5/76				
31	Jul 5/76				
* 32	Jan 5/77				
* 33	Jan 5/77				
* 34	Jan 5/77				
* 35	Jan 5/77				
* 36	BLANK				

BOEING 
COMMERCIAL JET
OVERHAUL MANUAL

TABLE OF CONTENTS

<u>Paragraph Title</u>	<u>Page</u>
Description and Operation	*
Disassembly	*
Cleaning.	*
Inspection/Check.	*
Repair.	1
Assembly.	*
Fits and Clearances (not applicable)	
Testing	*
Trouble Shooting.	*
Storage Instructions.	*
Special Tools, Fixtures, and Equipment (not applicable)	
Illustrated Parts List.	2

*This manual contains only refinish information and illustrated parts list.
All other approved procedures for this unit are in 25-20-00, Passenger
Service Unit Overhaul Procedures.

BOEING 
COMMERCIAL JET
OVERHAUL MANUAL

PARTIAL SECTIONS PASSENGER SERVICE UNIT ASSEMBLY

1. REPAIR

A. Materials

- (1) Lacquer, hi-speed semigloss (Ref 20-60-02)
- (2) Primer -- BMS 10-11, type 1 (Ref 20-60-02)

B. Refinish

CAUTION: THE USE OF HI-SPEED LACQUER TO REFINISH POLYCARBONATE PLASTIC PARTS WILL CAUSE INSTANT DETERIORATION THAT MAY OR MAY NOT BE VISUALLY DETECTABLE.

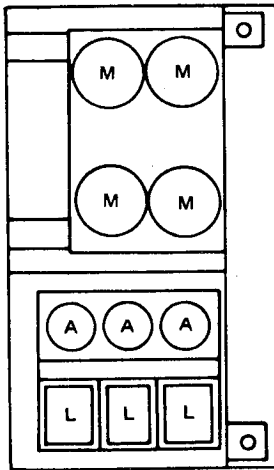
NOTE: Refer to 20-30-02 for stripping of protective finishes, and to 20-41-01 for explanation of F and SRF finish codes.

- (1) Heat shield (245, 260, Fig. 2; 145, Fig. 3) -- Apply two coats hi-speed semigloss lacquer, BAC711 white (F-14.904-711) all over.
Material: Alum alloy.
- (2) Brackets (330, 335, Fig. 2; 205, Fig. 3; 130, 135, Fig. 4; 170, 175, Fig. 5) angles (375, 505, 520, Fig. 2; 305, 310, Fig. 4; 185, Fig. 5) and mount assembly (75, Fig. 5) -- Alodize or chromic acid anodize (Ref 20-43-01) and apply one coat primer (SRF-2.30) all over.
Material: Alum alloy.
- (3) Spring (480, Fig. 2; 280, Fig. 4) -- Cadmium plate per 20-42-05, type 2, class 2 all over. Material: Steel music wire.
- (4) Channels (190, Fig. 4; 190, Fig. 5) -- Alodize or chromic acid anodize (Ref 20-43-01) and apply one coat primer (SRF-2.30) all over, except omit finish on bond surfaces. Material: Alum alloy.

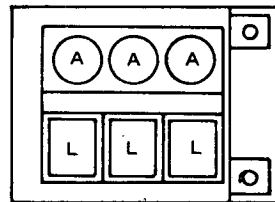
BOEING 
COMMERCIAL JET
OVERHAUL MANUAL

65-82721
DASH NUMBERS LIMITED

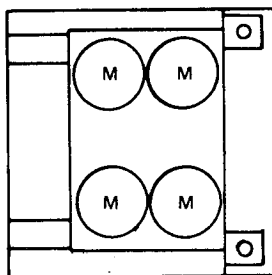
2. ILLUSTRATED PARTS LIST



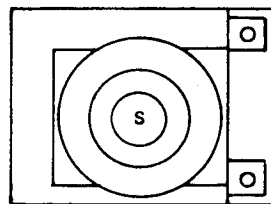
65-82721-83, -84



65-82721-87, -88



65-82721-89, -90



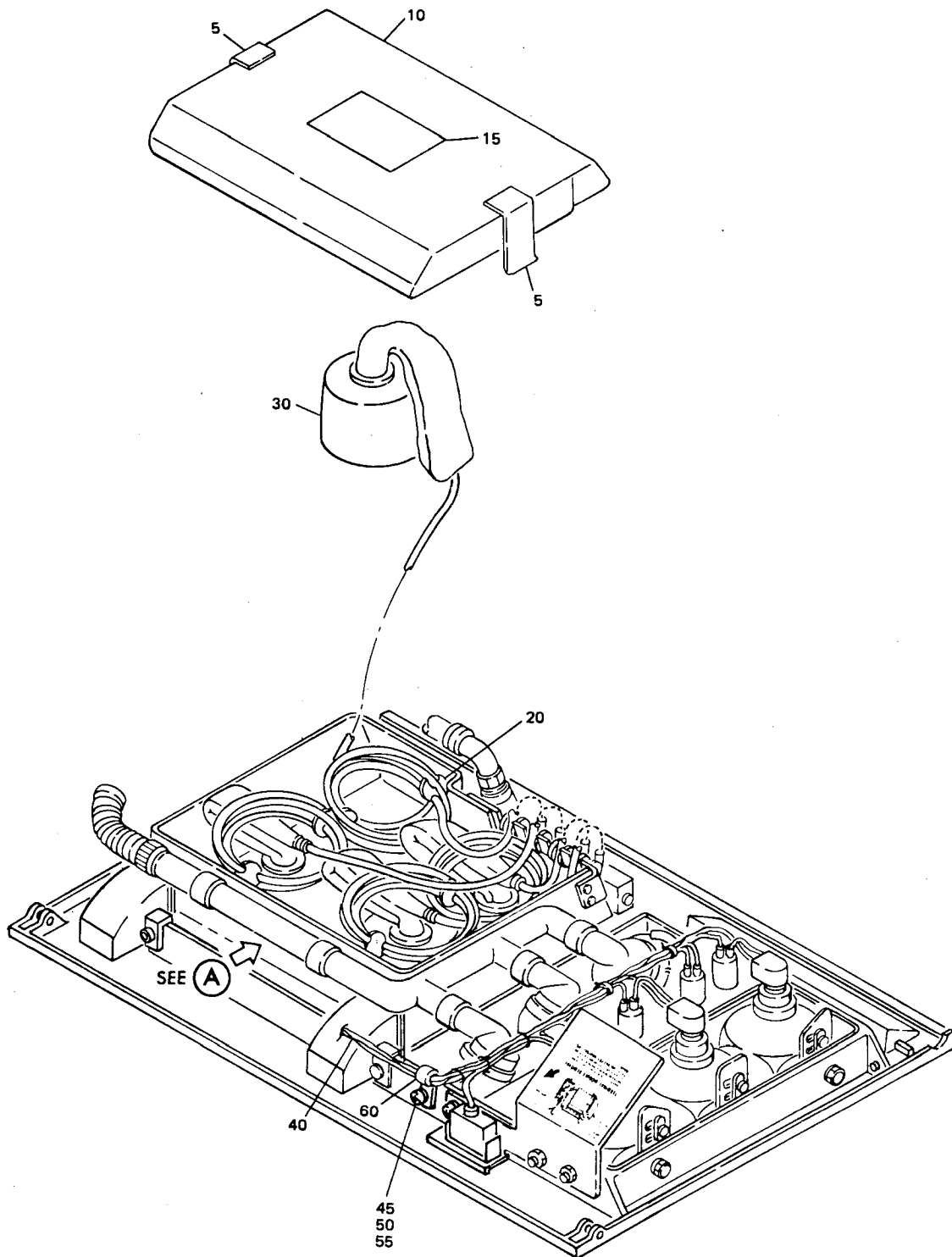
65-8271-91 THRU-94

BOEING 
COMMERCIAL JET
OVERHAUL MANUAL

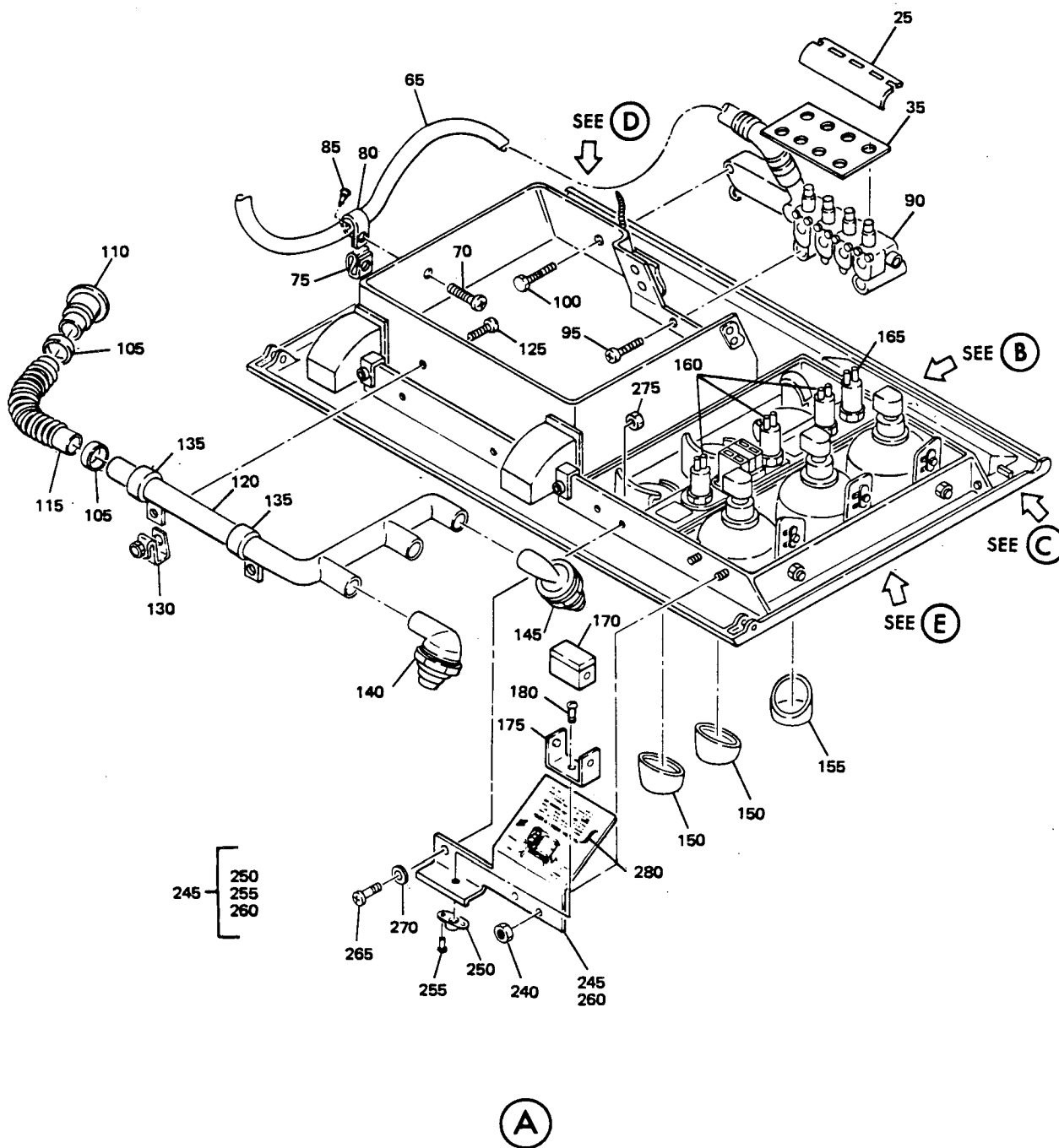
FIG. & ITEM NO.	PART NO.	AIRLINE PART NUMBER	N O M E N C L A T U R E							USE CODE	QTY PER ASSY
			1	2	3	4	5	6	7		
1-1	65-82721-83										RF
1	65-82721-84										RF
1	65-82721-87										RF
1	65-82721-88										RF
1	65-82721-89										RF
1	65-82721-90										RF
1	65-82721-91										RF
1	65-82721-92										RF
1	65-82721-93										RF
1	65-82721-94										RF

BOEING 
COMMERCIAL JET
OVERHAUL MANUAL

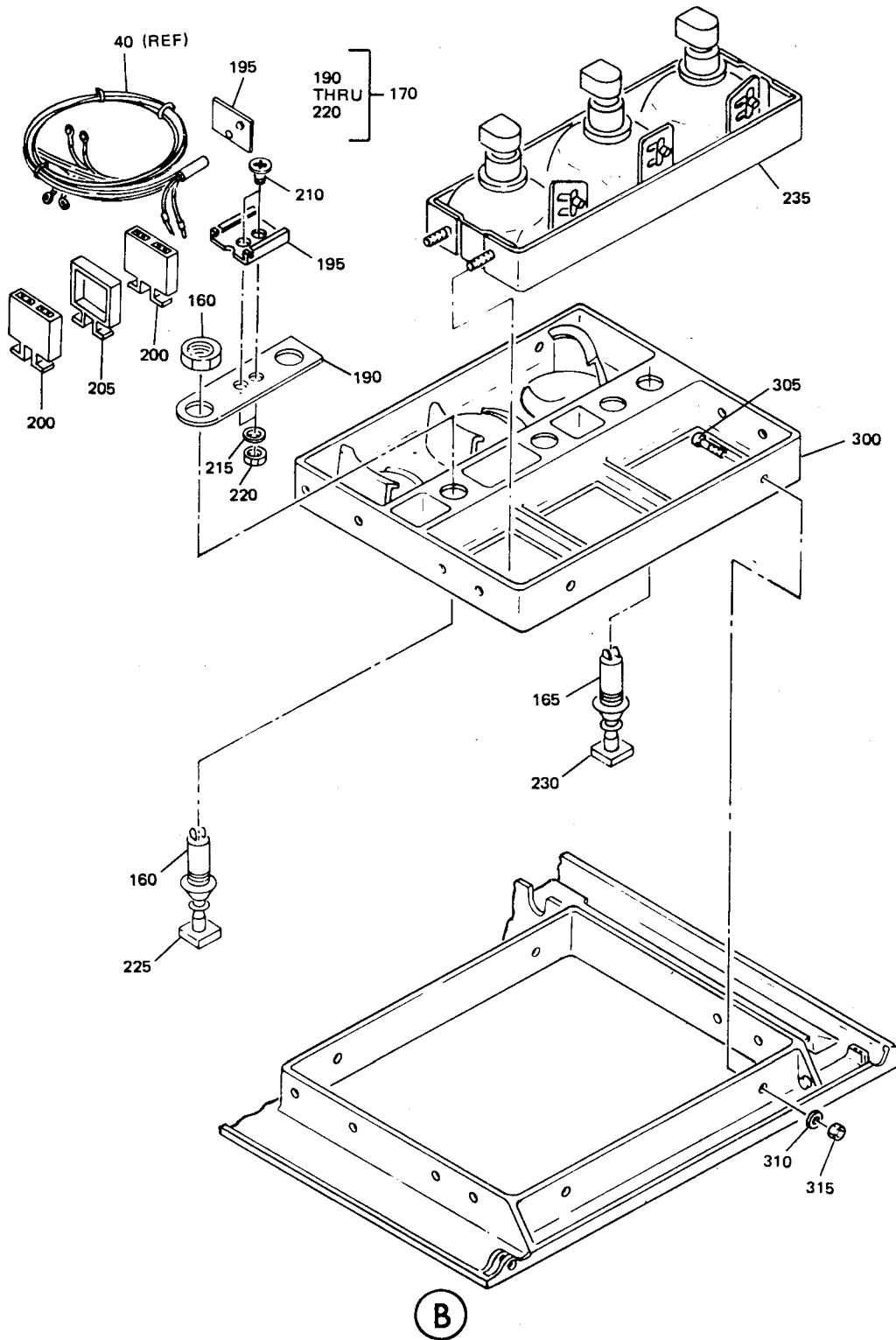
65-82721
DASH NUMBERS LIMITED



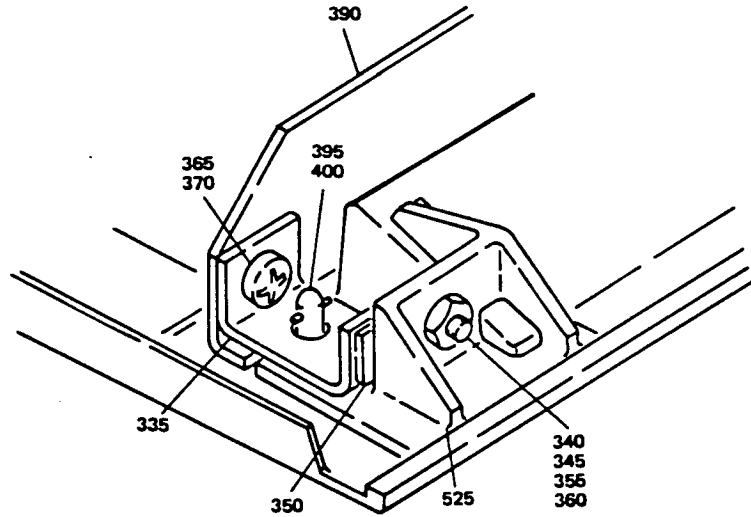
Partial Sections Passenger Service Unit Assembly
Figure 2 (Sheet 1)



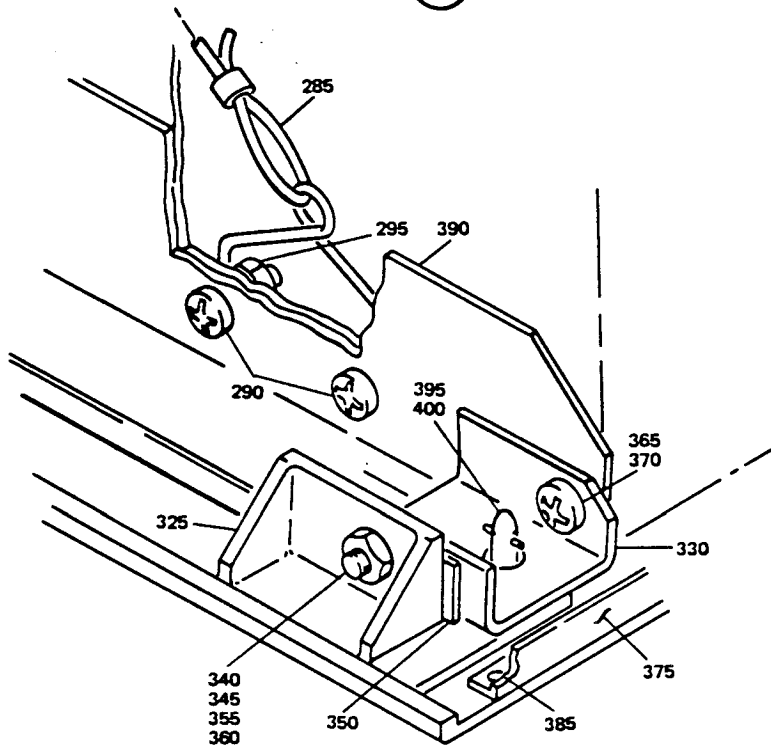
Partial Sections Passenger Service Unit Assembly
Figure 2 (Sheet 2)



Partial Sections Passenger Service Unit Assembly
Figure 2 (Sheet 3)



(C)

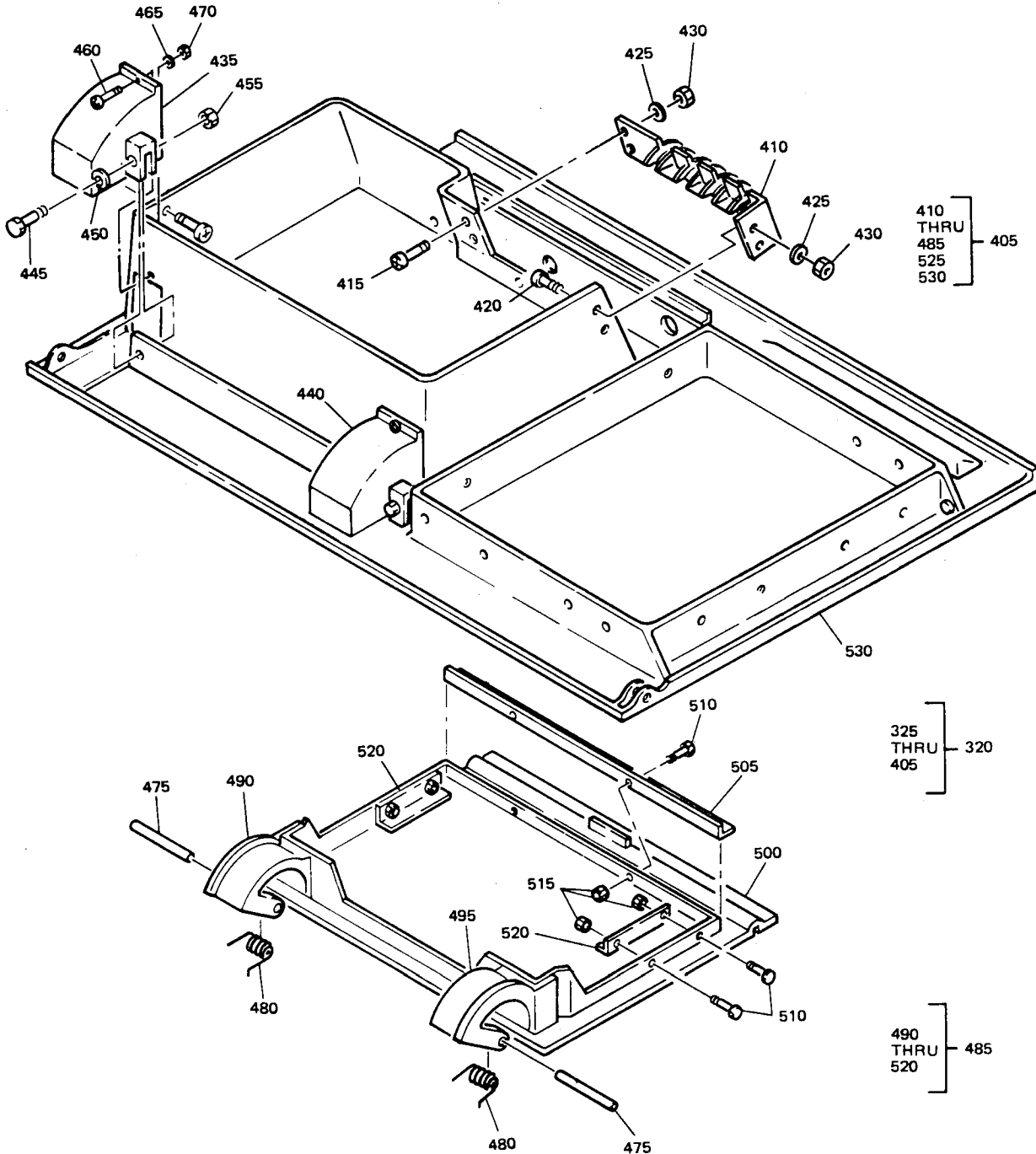


(D)

Partial Sections Passenger Service Unit Assembly
Figure 2 (Sheet 4)

BOEING
COMMERCIAL JET
OVERHAUL MANUAL

65-82721
 DASH NUMBERS LIMITED



(E)

Partial Sections Passenger Service Unit Assembly
 Figure 2 (Sheet 5)

BOEING 
COMMERCIAL JET
OVERHAUL MANUAL

FIG. & ITEM NO.	PART NO.	AIRLINE PART NUMBER	N O M E N C L A T U R E							USE CODE	QTY PER ASSY
			1	2	3	4	5	6	7		
2-1	65-82721-83		PARTIAL SECTIONS PASSENGER SERVICE UNIT ASSY							A	RF
1	65-82721-84		PARTIAL SECTIONS PASSENGER SERVICE UNIT ASSY							B	RF
5	65-82721-15		. TAPE								2
10	65-80172-7		. COVER, OXYGEN BOX								1
15	BAC27DPA343		. FLACARD								1
20	63-10155		. RETAINER, COIL								8
25	69-64747-1		. GUIDE, TUBE								1
30	289-701-27		. MASK, OXYGEN, V92114 (BOEING 10-60137-49)								4
35	69-62463-1		. GUIDE, TUBE								1
40	61-23100-2		. BUNDLE, WIRE							A	1
40	61-23100-5		. BUNDLE, WIRE							B	1
40	61-23100-2		. BUNDLE, WIRE (OPT)							B	1
-42	67-907		. . CONNECTOR, V02660								1
45	BACSL2CB08-12		. SCREW *[1]								1
50	AN960PD8		. WASHER								1
-55	BACN10FX84		. CLIPNUT								1
60	BACC10DK-()		. CLAMP *[2]								1
65	ZH833-39		. HOSE, OXYGEN, V02217 (BOEING 10-60174-39)								1
63	37001-39		. HOSE, OXYGEN, V24984 (BOEING 10-60174-39)								1
70	NAS602-8P		. SCREW								1
75	BACN10FX83		. CLIPNUT								1
80	BACC10DK7		. CLAMP								1
85	BACP20BA1		. PLUG								1
90	115013-1		. MANIFOLD ASSY, V16827 (BOEING 10-60513-7)							A	1
90	115013-2		. MANIFOLD ASSY, V16827 (BOEING 10-60513-8)							B	1
95	NAS603-22P		. SCREW								2
100	NAS603-20P		. SCREW								1
105	6203		. CLAMP, V81646								2
110	69-64738-1		. FITTING ASSY, QUICK DISCONNECT								1
115	BE406-3		. DUCT, AIR, V05399								1
115	AD604-3		. DUCT, AIR, V21868 (OPT)								1
120	69-62660-2		. MANIFOLD								1
125	NAS602-8P		. SCREW								2
130	BACN10FX83		. CLIPNUT								2
135	BACC10DK12		. CLAMP								2

BOEING 
COMMERCIAL JET
OVERHAUL MANUAL

65-82721
DASH NUMBERS LIMITED

FIG. & ITEM NO.	PART NO.	AIRLINE PART NUMBER	N O M E N C L A T U R E							USE CODE	QTY PER ASSY
			1	2	3	4	5	6	7		
2-140	116999-15C										2
145	120646-1C										1
150	65-79165-31										2
155	65-79165-32										1
160	710907-13A2										3
165	710906-13A1										1
170	TR1E4								A		1
170	TR1E4								B		1
175	T11AH								A		1
175	T11AH								B		1
180	NAS601-3P										1
185	69-65298-1								B		1
190	69-65258-1										1
195	AMY0110T8										1
200	BACM15C1A										2
205	YHLZ1C-8										1
-210	BACR15DA6-2										2
210	NAS602-7										2
215	AN960PD8L										2
220	BACN10JC08										2
225	691212-13A1-1										1
230	690623A1-4										1
235	10-0429-1								A		1
235	10-0429-2								B		1
240	BACN10JC08										4
245	69-61460-6								A		1
245	69-65414-1								B		1
245	69-61460-7								B		1
250	BACN10JN06										1
255	BACR15BA3D										2
260	69-61460-3										1
260	69-61460-4										1
265	NAS601-8P										1
270	AN960PD6L										1
275	BACN10JC06										1
280	BAC27DPA373								A		1
280	BAC27DPA465								B		1

BOEING 
COMMERCIAL JET
OVERHAUL MANUAL

FIG. & ITEM NO.	PART NO.	AIRLINE PART NUMBER	N O M E N C L A T U R E							USE CODE	QTY PER ASSY
			1	2	3	4	5	6	7		
2-											
280	BAC27DPA374									B	1
285	69-63824-1										1
290	NAS602-8P										2
295	BACN10JCO8										2
300	65-79165-5									A	1
300	65-79165-6									B	1
305	NAS514P832-5P										4
310	AN960PD8L										4
315	BACN10JCO8										4
320	65-82721-76									A	1
320	65-82721-85									B	1
325	65-79165-35									A	1
325	65-79165-36									B	1
330	65-82721-16										1
335	69-61468-7										1
340	NAS514P832-7										2
345	MS35338-42										2
350	BACS40RO6DO6F										2
355	NAS43DD3-8										2
360	MS35649-282										2
365	NAS602-5P										2
370	BACN10JCO8										2
375	69-63901-4									A	1
375	69-63901-3									B	1
380											
385	BACR15BA4A										2
390	69-61459-12									A	1
390	69-61459-13									B	1
395	82-19-200-16										2
400	82-46-101-39										2
405	65-80173-27									A	1
405	65-80173-28									B	1
405	65-80173-17									A	1
405	65-80173-18									B	1
405	65-80173-39									A	1
405	65-80173-40									B	1
410	65-79165-21									A	1
410	65-79165-22									B	1
415	NAS514P632-6										2
420	NAS601-6P										2

BOEING
COMMERCIAL JET
OVERHAUL MANUAL

65-82721
DASH NUMBERS LIMITED

FIG. & ITEM NO.	PART NO.	AIRLINE PART NUMBER	N O M E N C L A T U R E							USE CODE	QTY PER ASSY
			1	2	3	4	5	6	7		
2-420	NAS601-6B			2
425	NAS620-6L			4
430	BACN10JC06			4
435	65-79165-19			1
435	65-79165-20			1
435	65-79165-51			1
435	65-79165-52			1
440	65-79165-20			1
440	65-79165-19			1
440	65-79165-52			1
440	65-79165-51			1
445	NAS623-2-5			4
450	NAS620-8L			4
455	BACN10JC08			4
460	BACSL2CB04-6			2
465	AN960-4L			2
470	BACN10JC04			2
475	MS20253-3-124			2
480	69-61458-1			2
485	65-79165-13			1
485	65-79165-41			1
485	65-79165-14			1
485	65-79165-42			1
490	65-79165-17			1
490	65-79165-53			1
490	65-79165-18			1
490	65-79165-54			1

BOEING 
COMMERCIAL JET
OVERHAUL MANUAL

FIG. & ITEM NO.	PART NO.	AIRLINE PART NUMBER	N O M E N C L A T U R E							USE CODE	QTY PER ASSY
			1	2	3	4	5	6	7		
2- 495	65-79165-18			1
495	65-79165-54			1
495	65-79165-17			1
495	65-79165-53			1
500	65-79165-15			1
500	65-79165-16			1
500	65-79165-43			1
500	65-79165-44			1
505	66-25423-1			1
510	BACS12CB04-3			6
515	BACN10DN40			6
520	66-25423-4			2
525	65-79165-33			1
525	65-79165-34			1
530	*[6]			1
530	*[6]			1
530	*[6]			1
530	*[6]			1

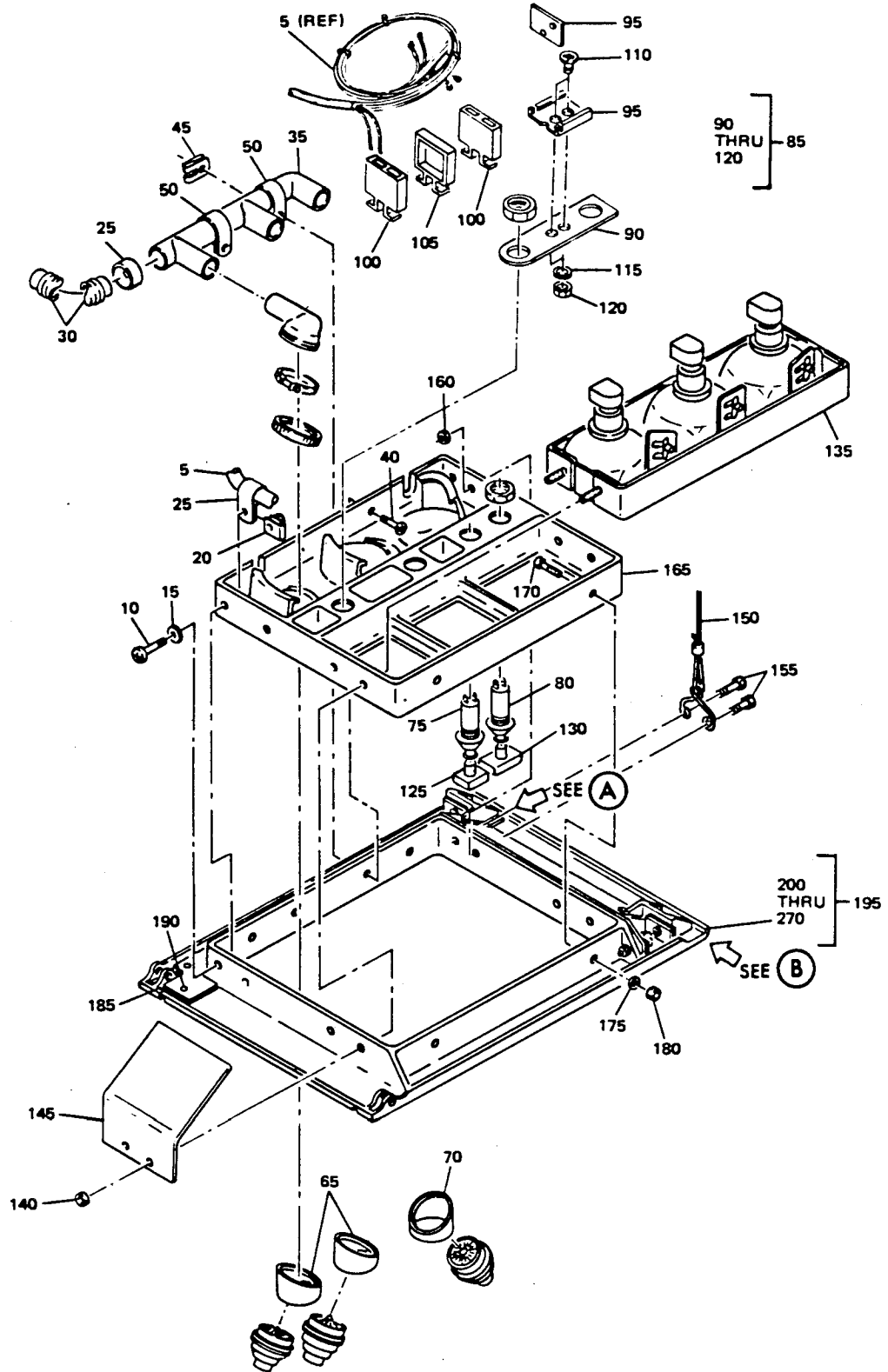
BOEING 
COMMERCIAL JET
OVERHAUL MANUAL

65-82721
DASH NUMBERS LIMITED

- ITEM NOT ILLUSTRATED
- *[1] VARY LENGTH AS REQUIRED
- *[2] SIZE TO FIT WIRE BUNDLE
- *[3] TR1E4 AND T11AH, TOGETHER WITH 69-61460-7, OPTIONAL TO 69-65298-1 AND 69-65414-1
- *[4] PLACARD (280) REQUIRED ONLY WHEN TR1E4 TERMINAL MODULE IS INSTALLED
- *[5] NUTS, WASHERS AND SCREWS OPTIONAL TO RIVETS
- *[6] NO BOEING PART NUMBER ASSIGNED

REFERENCE DESIGNATION INDEX (SEE 25-20-00 SCHEMATIC)		
REFERENCE DESIGNATION	PART NUMBER	ITEM NO. FIG. 2
D3100	67-907	42
L3000	10-0429-1	235
L3001	10-0429-2	235
S3000	710906-13A1	165
S3001-S3003	710907-13A2	160
T3000	TR1E4	170
T3000	69-65298-1	185

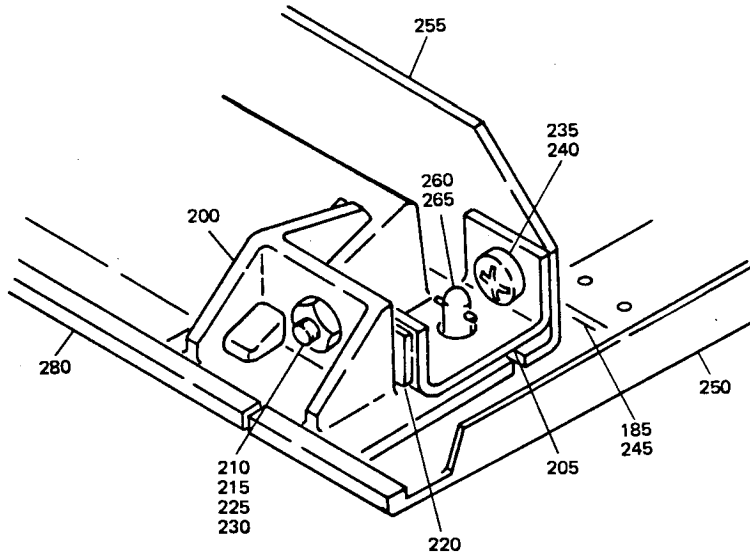
BOEING 
COMMERCIAL JET
OVERHAUL MANUAL



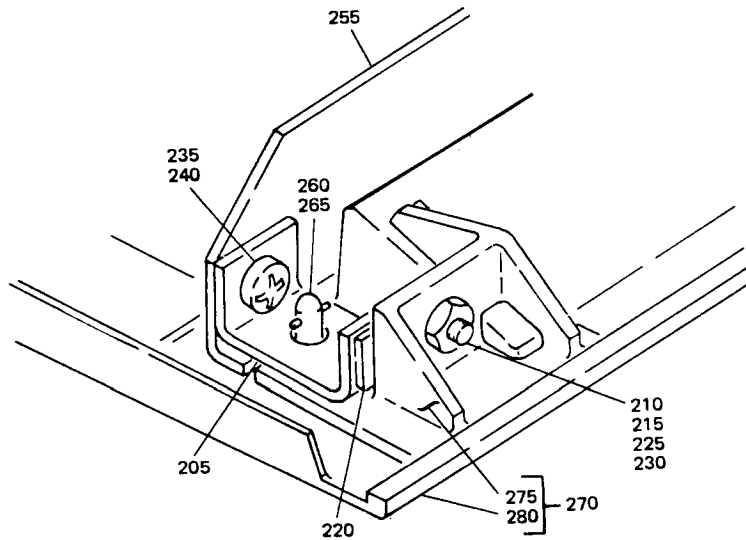
Partial Sections Passenger Service Unit Assembly
Figure 3 (Sheet 1)

BOEING 
COMMERCIAL JET
OVERHAUL MANUAL

65-82721
DASH NUMBERS LIMITED



(A)



(B)

Partial Sections Passenger Service Unit Assembly
Figure 3 (Sheet 2)

BOEING 
COMMERCIAL JET
OVERHAUL MANUAL

FIG. & ITEM NO.	PART NO.	AIRLINE PART NUMBER	N O M E N C L A T U R E							USE CODE	QTY PER ASSY
			1	2	3	4	5	6	7		
3-1	65-82721-87		PARTIAL SECTIONS PASSENGER SERVICE UNIT ASSY							A	RF
1	65-82721-88		PARTIAL SECTIONS PASSENGER SERVICE UNIT ASSY							B	RF
5	61-23100-8		. BUNDLE, WIRE								1
5	61-23100-5		. BUNDLE, WIRE (OPT)								1
-7	67-907		. . CONNECTOR, V02660								
10	BACS12CB08-12		. SCREW *[1]								1
15	AN960PD8		. WASHER								1
20	BACN10FX84		. CLIPNUT								1
25	BACC10DK-()		. CLAMP *[2]								1
25	6203		. CLAMP, V81646								1
30	BE406-3		. DUCT, AIR, V05399								1
30	AD604-3		. DUCT, AIR, V21868 (OPT)								1
35	69-62660-2		. MANIFOLD								1
40	NAS602-8P		. SCREW								2
45	BACN10FX83		. CLIPNUT								2
50	BACC10DK12		. CLAMP								2
55	116999-15C		. OUTLET, AIR, V17744 (BOEING 10-60141-18)								2
60	120646-1C		. OUTLET, AIR, V17744 (BOEING 10-60141-19)								1
65	65-79165-31		. CONE, AIR								2
70	65-79165-32		. CONE, AIR								1
75	710907-13A2		. SWITCH, LIGHT, V97564								3
80	710906-13A1		. SWITCH, CALL, V97564								1
85	69-65298-1		. MODULE ASSY, TERMINAL								1
90	69-65258-1		. . BASE								1
95	AMY0110T8		. . BOTTOM AND KEEPER, V09922 (2 PIECES)								1
100	BACML5C1A		. . CONNECTOR								2
105	YHLZ1C-8		. . SPACER								1
-110	BACR15DA6-2		. . RIVET *[3]								2
110	NAS602-7		. . SCREW *[3]								2
115	AN960PD8L		. . WASHER *[3]								2
120	BACN10JC08		. . NUT *[3]								2
125	691212-13A1-1		. LENS, LIGHT SWITCH, V97564								3
130	690623A1-4		. LENS, CALL SWITCH, V97564								1
135	10-0429-1		. LIGHT ASSY, READING, V72914 (BOEING 10-61779-1)							A	1
135	10-0429-2		. LIGHT ASSY, READING, V72914 (BOEING 10-61779-2)							B	1

BOEING 
COMMERCIAL JET
OVERHAUL MANUAL

65-82721
DASH NUMBERS LIMITED

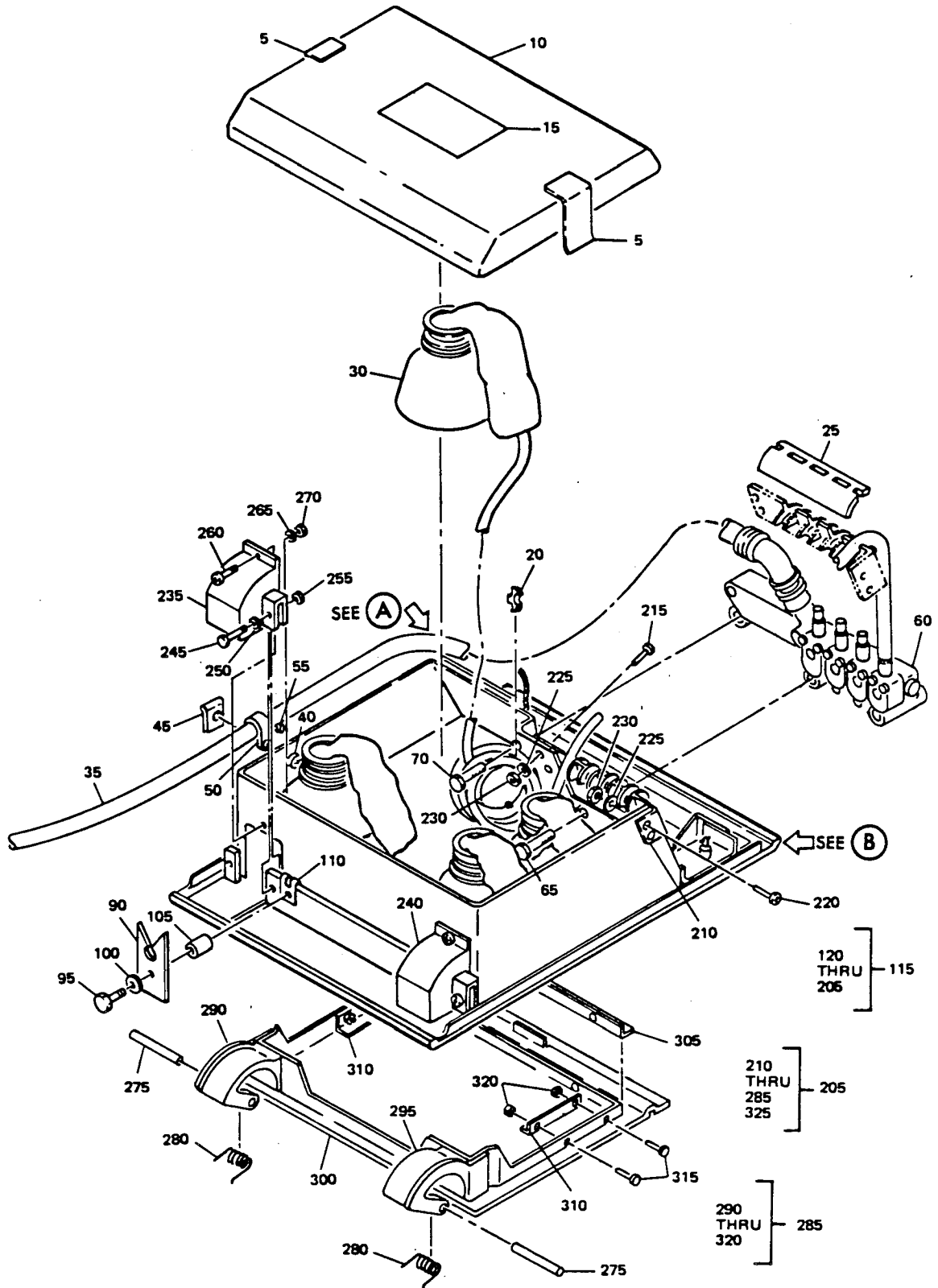
FIG. & ITEM NO.	PART NO.	AIRLINE PART NUMBER	N O M E N C L A T U R E							USE CODE	QTY PER ASSY
			1	2	3	4	5	6	7		
3-											4
140	BACN10JCO8										1
145	69-65414-1										1
150	69-63824-1										1
155	NAS602-8P										2
160	BACN10JCO8										2
165	65-79165-5								A		1
165	65-79165-6								B		1
170	NAS514P832-5P										4
175	AN960PD8L										4
180	BACN10JCO8										4
185	69-63528-6										1
190	BACR15BA4A										4
195	65-82721-59								A		1
195	65-82721-60								B		1
200	65-79165-34								A		1
200	65-79165-33								B		1
205	69-61468-7										2
210	NAS514P832-7										2
215	MS35338-42										2
220	BACS40R06DO6F										2
225	NAS43DD3-8										2
230	MS35649-282										2
235	NAS602-5P										2
240	BACN10JCO8										2
245	69-63528-5										1
250	65-80173-31								A		1
250	65-80173-32								B		1
255	69-63528-4										1
260	82-19-200-16										2
265	82-46-101-39										2
270	65-80173-23								A		1
270	65-80173-24								B		1
275	65-79165-33								A		1
275	65-79165-34								B		1
280	*[4]								A		1
280	*[4]								B		1

- ITEM NOT ILLUSTRATED

BOEING 
COMMERCIAL JET
OVERHAUL MANUAL

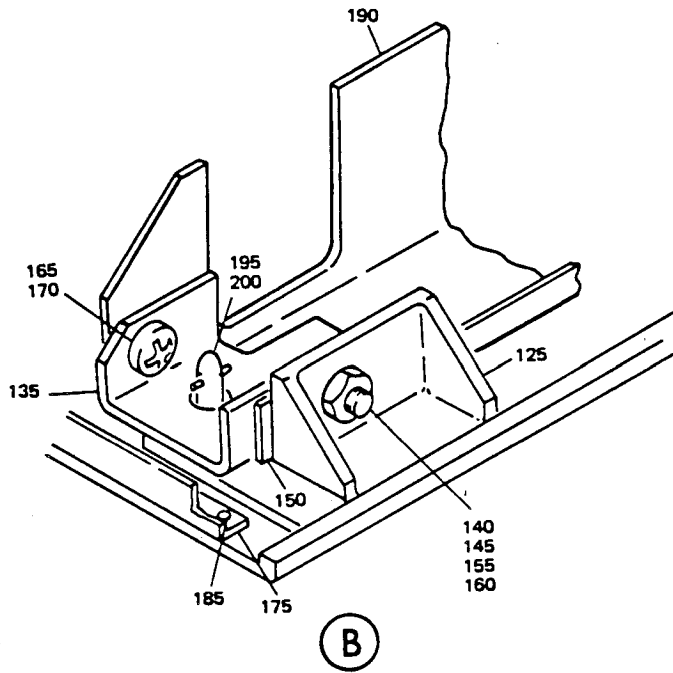
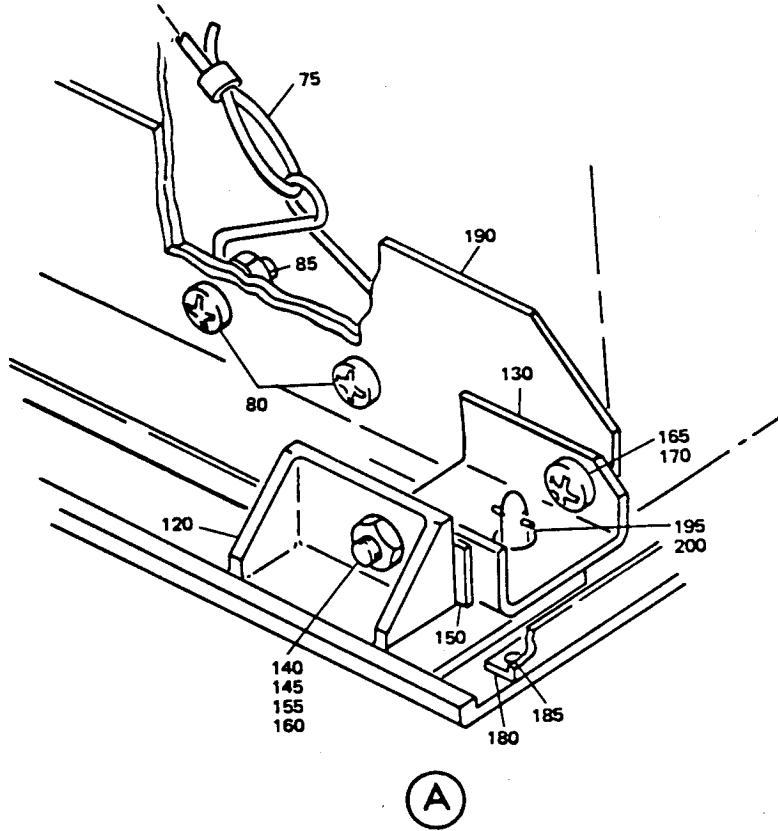
- *[1] VARY LENGTH AS REQUIRED
- *[2] SIZE TO FIT WIRE BUNDLE
- *[3] RIVET OPTIONAL TO SCREW, NUT AND WASHER
- *[4] NO BOEING PART NUMBER ASSIGNED

REFERENCE DESIGNATION INDEX (SEE 25-20-00 SCHEMATIC)		
REFERENCE DESIGNATION	PART NUMBER	ITEM NO. FIG. 3
D3100	67-907	7
L3000	10-0429-1	135
L3001	10-0429-2	135
S3000	710906-13A1	80
S3001-S3003	710907-13A2	75
T3000	69-65298-1	85



Partial Sections Passenger Service Unit Assembly
Figure 4 (Sheet 1)

Jul 5/76



Partial Sections Passenger Service Unit Assembly
 Figure 4 (Sheet 2)

BOEING 
COMMERCIAL JET
OVERHAUL MANUAL

FIG. & ITEM NO.	PART NO.	AIRLINE PART NUMBER	N O M E N C L A T U R E							USE CODE	QTY PER ASSY
			1	2	3	4	5	6	7		
4- 1	65-82721-89		PARTIAL SECTIONS PASSENGER SERVICE UNIT ASSY							A	RF
1	65-82721-90		PARTIAL SECTIONS PASSENGER SERVICE UNIT ASSY							B	RF
5	65-82721-15		. TAPE								2
10	65-80172-7		. COVER, OXYGEN BOX							A	1
10	65-80172-8		. COVER, OXYGEN BOX							B	1
15	BAC27DPA465		. PLACARD								1
20	63-10155		. RETAINER, COIL								8
25	69-64747-1		. GUIDE, TUBE								1
30	289-701-27		. MASK, OXYGEN, V92114 (BOEING 10-60137-49)								4
35	ZH833-39		. HOSE, OXYGEN, V02217 (BOEING 10-60174-39)								1
35	37001-39		. HOSE, OXYGEN, V24984 (BOEING 10-60174-39)								1
40	NAS602-8P		. SCREW								1
45	BACN10FX83		. CLIPNUT								1
50	BACC10DK7		. CLAMP								1
55	BACP20BA1		. FLUG								1
60	115013-1		. MANIFOLD ASSY, V16827 (BOEING 10-60513-7)							A	1
60	115013-2		. MANIFOLD ASSY, V16827							B	1
65	NAS603-22P		. SCREW								2
70	NAS603-20P		. SCREW								1
75	69-63824-1		. LANYARD ASSY								1
80	NAS602-5P		. SCREW								2
85	BACN10JCO8		. NUT								2
90	69-64747-2		. GUIDE, TUBE								1
95	NAS602-20P		. SCREW								1
100	AN960D8L		. WASHER								1
105	NAS42DD6-48		. SPACER								1
110	BACN10FX84		. CLIPNUT								1
115	65-82721-57		. SHELL ASSY, BASIC							A	1
115	65-82721-58		. SHELL ASSY, BASIC							B	1
120	65-79165-35		. . FITTING, REINFORCING							A	1
120	65-79165-36		. . FITTING, REINFORCING							B	1
125	65-79165-36		. . FITTING, REINFORCING							A	1
125	65-79165-35		. . FITTING, REINFORCING							B	1
130	65-82721-16		. . BRACKET, MOUNT								1
135	65-82721-17		. . BRACKET, MOUNT							A	1

BOEING 
COMMERCIAL JET
OVERHAUL MANUAL

65-82721
DASH NUMBERS LIMITED

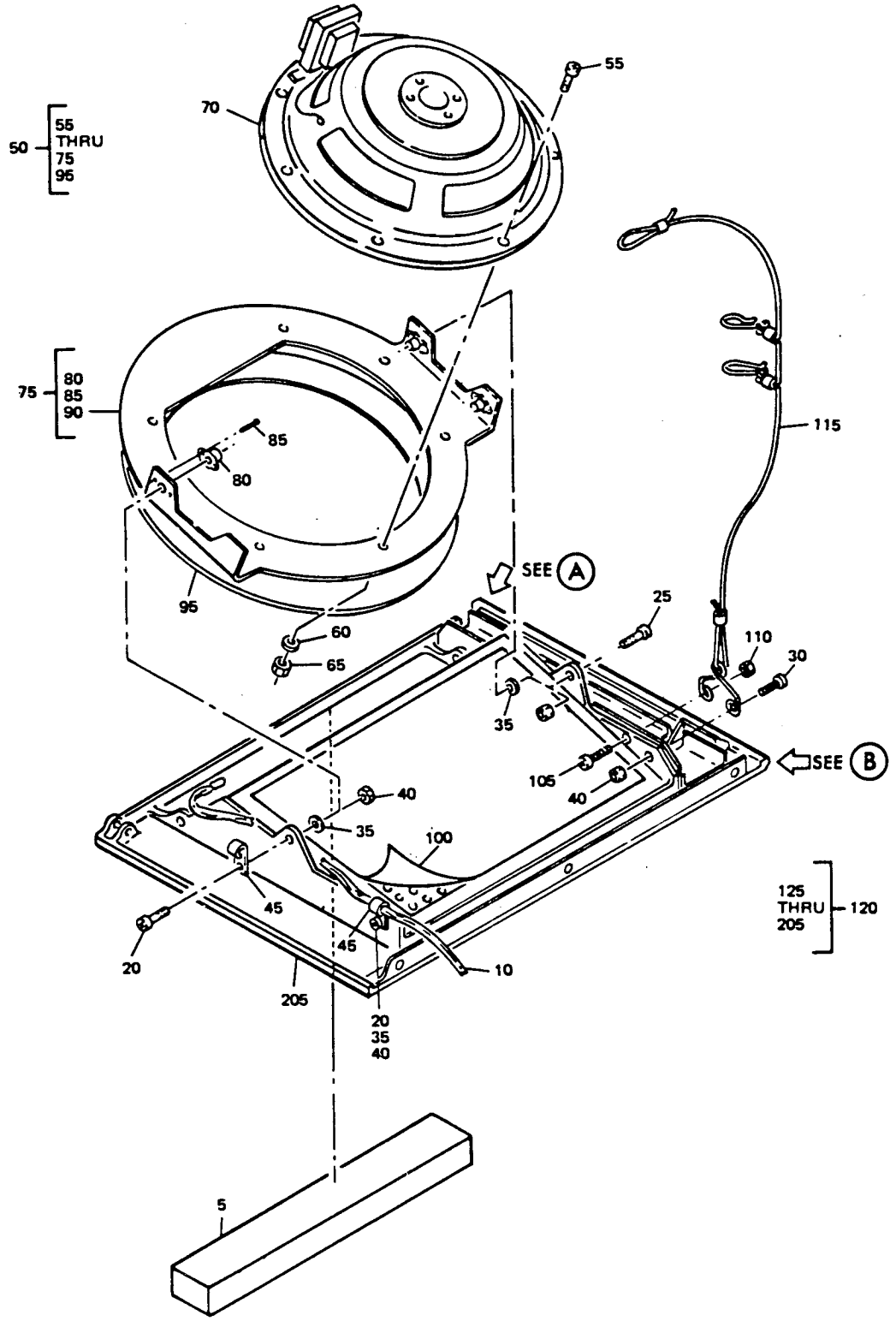
FIG. & ITEM NO.	PART NO.	AIRLINE PART NUMBER	N O M E N C L A T U R E							USE CODE	QTY PER ASSY
			1	2	3	4	5	6	7		
4-											
135	65-82721-18									B	1
140	NAS514P832-7										2
145	MS35338-42										2
150	BACS40R06D06F										2
155	NAS43DD3-8										2
160	MS35649-282										2
165	NAS602-5P										2
170	BACN10JC08										2
175	69-63901-3									A	1
175	69-63901-4									B	1
180	69-63901-4									A	1
180	69-63901-3									B	1
185	BACR15BA4A										4
190	69-63528-1									A	1
190	69-63528-2									B	1
195	82-19-200-16										2
200	82-46-101-39										2
205	65-80173-33									A	1
205	65-80173-34									B	1
210	65-79165-21									A	1
210	65-79165-22									B	1
215	NAS514P632-6										2
220	NAS601-6P										2
220	NAS601-6B										2
225	NAS620-6L										2
230	BACN10JC06										4
235	65-79165-51									A	1
235	65-79165-52									B	1
240	65-79165-52									A	1
240	65-79165-51									B	1
245	NAS623-2-5										4
250	NAS620-8L										4
255	BACN10JC08										4
260	BACS12CB04-6										2
265	AN960-4L										2
270	BACN10JC04										2
275	MS20253-3-124										2
280	69-61458-1										2
285	65-79165-41									A	1
285	65-79165-42									B	1
290	65-79165-53									A	1

BOEING 
COMMERCIAL JET
OVERHAUL MANUAL

FIG. & ITEM NO.	PART NO.	AIRLINE PART NUMBER	N O M E N C L A T U R E							USE CODE	QTY PER ASSY
			1	2	3	4	5	6	7		
4-											
290	65-79165-54		HINGE	B	1
295	65-79165-54		HINGE	A	1
295	65-79165-53		HINGE	B	1
300	65-79165-43		DOOR	A	1
300	65-79165-44		DOOR	B	1
305	66-25423-1		ANGLE, STIFFENER		1
310	66-25423-4		ANGLE, STIFFENER		2
315	BACS12CB04-3		SCREW		6
320	BACN10DN40		NUT		6
325	*[1]		SHELL, BASIC (MADE FROM 65-79165-39)	A	1
325	*[1]		SHELL, BASIC (MADE FROM 65-79165-40)	B	1

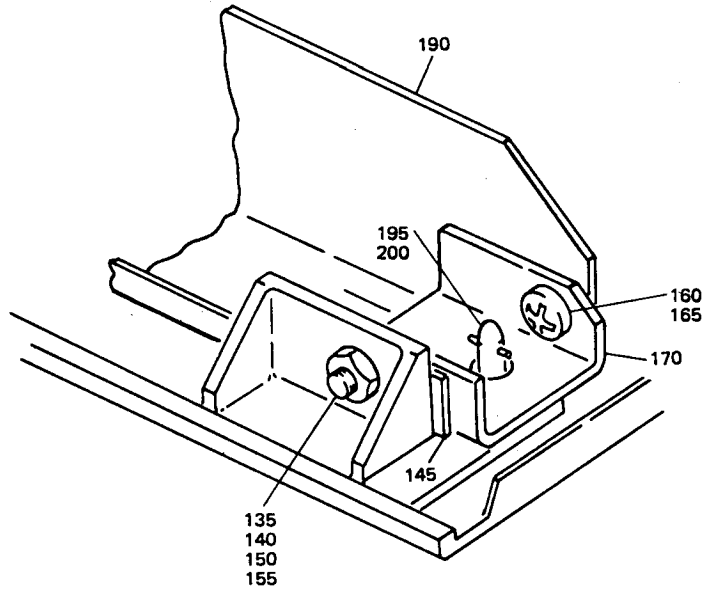
*[1] NO BOEING PART NUMBER ASSIGNED

BOEING 
COMMERCIAL JET
OVERHAUL MANUAL

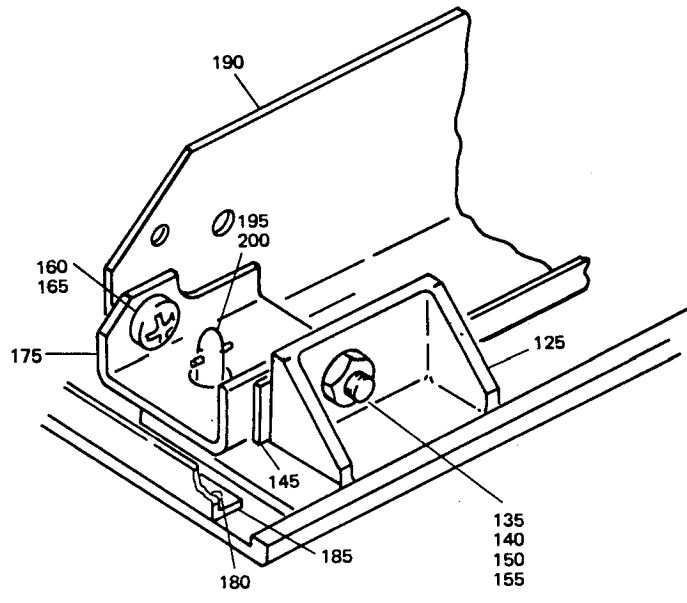


Jul 5/76

Partial Sections Passenger Service Unit Assembly
Figure 5 (Sheet 1)



(A)



(B)

Partial Sections Passenger Service Unit Assembly
 Figure 5 (Sheet 2)

BOEING 
COMMERCIAL JET
OVERHAUL MANUAL

FIG. & ITEM NO.	PART NO.	AIRLINE PART NUMBER	N O M E N C L A T U R E							USE CODE	QTY PER ASSY
			1	2	3	4	5	6	7		
5-1	65-82721-91		PARTIAL SECTIONS PASSENGER SERVICE UNIT ASSY							A	RF
1	65-82721-92		PARTIAL SECTIONS PASSENGER SERVICE UNIT ASSY							B	RF
1	65-82721-93		PARTIAL SECTIONS PASSENGER SERVICE UNIT ASSY							C	RF
1	65-82721-94		PARTIAL SECTIONS PASSENGER SERVICE UNIT ASSY							D	RF
5	800000095-1		. HOUSING, INFORMATION SIGN, V05617 (BOEING 10-61892-1)								1
10	61-23100-8		. BUNDLE, WIRE								1
-15	67-907		. . CONNECTOR, V02660								1
20	BAC512CB08		. SCREW *[1]								2
25	NAS602-6P		. SCREW							AC	1
30	NAS602-8P		. SCREW								1
35	NAS549-8		. WASHER							AC	4
35	AN960D8		. WASHER							BD	2
40	BACN10JC08		. NUT							BD	3
45	BACC10DK-()		. CLAMP *[2]								2
50	69-61466-4		. SPEAKER ASSY							AC	1
55	NAS514P1032-8		. . SCREW								7
60	AN960C10L		. . WASHER								7
65	BACN10JC3		. . NUT								7
70	8-3282		. . SPEAKER, V26234								1
70	C8TSC8800		. . SPEAKER, V32001 (OPT)								1
75	69-62320-1		. . MOUNT ASSY, SPEAKER								1
80	NAS1068A06L		. . . NUTPLATE								4
-80	BACN10FX61		. . . CLIPNUT (OPT)								4
85	BACR15BA3D		. . . RIVET (USED WITH NAS1068A06L)								8
90	69-62320-2		. . . RING, MOUNTING								1
95	69-61466-3		. . TAPE, SEALING								1
100	65-82721-73		. TAPE							BD	1
105	NAS602-5P		. SCREW								1
110	BACN10JC08		. NUT								1
115	69-63824-1		. LANYARD ASSY								1
120	65-82721-56		. SHELL ASSY, BASIC							AD	1
120	65-82721-55		. SHELL ASSY, BASIC							BC	1
125	65-79165-35		. . FITTING, REINFORCING							AD	1
125	65-79165-36		. . FITTING, REINFORCING							BC	1
130			NOT USED								
135	NAS514P832-7		. . SCREW								2

BOEING 
COMMERCIAL JET
OVERHAUL MANUAL

65-82721
DASH NUMBERS LIMITED

FIG. & ITEM NO.	PART NO.	AIRLINE PART NUMBER	N O M E N C L A T U R E							USE CODE	QTY PER ASSY
			1	2	3	4	5	6	7		
5-											
140	MS35338-42										2
145	BACS40R06D06F										AR
150	NAS43DD3-8										2
155	MS35649-282										2
160	NAS602-5P										2
165	BACN10JC08										2
170	69-61468-5									AD	1
170	69-61468-6									BC	1
175	69-61468-6									AD	1
175	69-61468-5									BC	1
180	BACR15BA3A										2
185	69-63901-4									AD	1
185	69-63901-3									BC	1
190	69-63528-3										1
195	82-19-200-16										2
200	82-46-101-39										2
205	65-80173-30									AD	1
205	65-80173-29									BC	1

- ITEM NOT ILLUSTRATED

*[1] LENGTH AS REQUIRED

*[2] SIZE TO FIT WIRE BUNDLE

BOEING 
COMMERCIAL JET
OVERHAUL MANUAL

REFERENCE DESIGNATION INDEX (SEE 25-20-00 SCHEMATIC)		
REFERENCE DESIGNATION	PART NUMBER	ITEM NO. FIG. 5
D3100	67-907	15
L3002	800000095-1	5
M3001	8-3282	70
M3001	C8TSC8800	70

VENDORS

V02217 PURITAN-ZEP DIV., PURITAN EQUIPMENT INC., 111 PENN ST., EL SEGUNDO, CALIFORNIA 90245

V02660 BUNKER RAMO CORP., CONNECTOR DIV., 2801 S. 25TH AVE., BROADVIEW, ILLINOIS 60153

V05399 BEMCO INC., P.O. BOX 68, CENTERION, ARKANSAS 72719

V09922 BURNDY CORP., RICHARDS AVE., NORWALK, CONNECTICUT 06852

V16827 PURITAN EQUIPMENT INC., 10800 PFLUMM RD., LENEXA, KANSAS 66210

V17744 LUMINATOR DIV., GULTON INDUSTRIES INC., 1200 E. DALLAS N. PARKWAY, PLANO, TEXAS 75074

V21868 H.K. PORTER CO. INC., THERMOID DIV., GOVERNMENT SALES OFFICE, 601 GRANT ST., 1627 PORTER BLDG., PITTSBURGH, PENNSYLVANIA 15219

V24984 HYDRAFLOW SUPPLY INC., 5341 SHEILA ST., LOS ANGELES, CALIFORNIA 90040

V26234 CTS OF PADUCAH, 1565 N. 8TH ST., PADUCAH, KENTUCKY 42001

V32001 JENSEN MFG. DIV., THE MUTER CO., 5655 W. 73RD ST., CHICAGO, ILLINOIS 60638

V49367 PYLE-NATIONAL CO., 1334 N. KOSTNER AVE., CHICAGO, ILLINOIS 60651

V72914 GRIMES MFG. CO., 515 N. RUSSELL, URBANA, OHIO 43078

V81646 IDEAL CORP., P.O. BOX 8827, CHURCH ST. STATION, NEW YORK, NEW YORK 10049

V92114 SIERRA ENGINEERING CO., 123 E. MONTECITO AVE., SIERRA MADRE, CALIFORNIA 91024

V94222 SOUTHCO. INC., LESTER, PENNSYLVANIA 19113

V97564 CLARE-PENDAR INC., P.O. BOX 785, POST FALLS, IDAHO 83854

BOEING
COMMERCIAL JET
OVERHAUL MANUAL

65-82721
DASH NUMBERS LIMITED

Part No.	Fig. and Index No.	Qty. per Assy.
AD604-3	2-115	1
AD604-3	3-30	1
AMY0110T8	2-195	1
AMY0110T8	3-95	1
AN960-4L		AR
AN960C10L		AR
AN960D8		AR
AN960D8L		AR
AN960PD6L		AR
AN960PD8		AR
AN960PD8L		AR
BACC10DK12	2-135	2
BACC10DK12	3-50	2
BACC10DK7	2-80	1
BACC10DK7	4-50	1
BACC10DK-()	2-60	1
BACC10DK-()	3-25	1
BACC10DK-()	4-45	2
BACM15C1A	2-200	2
BACM15C1A	3-100	2
BACN10DN40	2-515	6
BACN10DN40	4-320	6
BACN10FX61	5-80	4
BACN10FX83	2-75	1
BACN10FX83	2-130	2
BACN10FX83	3-45	2
BACN10FX83	4-45	1
BACN10FX84	2-55	1
BACN10FX84	3-20	1
BACN10FX84	4-110	1
BACN10JC04	2-470	2
BACN10JC04	4-270	2
BACN10JC06	4-230	4
BACN10JC06	2-275	1
BACN10JC06	2-430	4
BACN10JC08	2-220	2
BACN10JC08	2-240	4
BACN10JC08	2-295	2
BACN10JC08	2-315	4
BACN10JC08	2-370	2
BACN10JC08	2-455	4
BACN10JC08	3-120	2
BACN10JC08	3-140	4

Part No.	Fig. and Index No.	Qty. per Assy.
BACN10JC08	3-160	2
BACN10JC08	3-180	4
BACN10JC08	3-240	2
BACN10JC08	4-85	2
BACN10JC08	4-170	2
BACN10JC08	4-255	4
BACN10JC08	5-40	3
BACN10JC08	5-110	1
BACN10JC08	5-165	2
BACN10JC3	5-65	7
BACN10JC06	2-250	1
BACP20BA1	2-85	1
BACP20BA1	4-55	1
BACR15BA3A	5-180	2
BACR15BA3D	2-255	2
BACR15BA3D	5-85	8
BACR15BA4A	2-385	2
BACR15BA4A	3-190	4
BACR15BA4A	4-185	4
BACR15DA6-2	2-210	2
BACR15DA6-2	3-110	2
BACS12CB04-3	2-510	6
BACS12CB04-3	4-315	6
BACS12CB04-6	2-460	2
BACS12CB04-6	4-260	2
BACS12CB08	5-20	2
BACS12CB08-12	2-45	1
BACS12CB08-12	3-10	1
BACS50RO6D06F	2-350	2
BACS40RO6D06F	3-220	2
BACS40RO6D06F	4-150	2
BACS40RO6D06F	5-145	AR
BAC27DPA343	2-15	1
BAC27DPA373	2-280	1
BAC27DPA374	2-280	1
BAC27DPA465	2-280	1
BAC27DPA465	4-15	1
BE406-3	2-115	1
BE406-3	3-30	1
C8TSC8800	5-70	1
MS20253-3-124	2-475	2
MS20253-3-124	4-275	2

BOEING 
COMMERCIAL JET
OVERHAUL MANUAL

Part No.	Fig. and Index No.	Qty. per Assy.
MS35338-42		AR
MS35649-282		AR
NAS1068A06L		AR
NAS42DD6-48		AR
NAS43DD3-8		AR
NAS514P1032-8		AR
NAS514P632-6		AR
NAS514P832-5P		AR
NAS514P832-7		AR
NAS549-8		AR
NAS601-3P		AR
NAS601-6B		AR
NAS601-6P		AR
NAS601-8P		AR
NAS602-20P		AR
NAS602-5P		AR
NAS602-6P		AR
NAS602-7		AR
NAS602-8P		AR
NAS603-20P		AR
NAS603-22P		AR
NAS620-6L		AR
NAS620-8L		AR
NAS623-2-5		AR
TRIE4	2-170	1
TLLAH	2-175	1
YHLZ1C-8	2-205	1
YHLZ1C-8	3-105	1
ZB833-39	2-65	1
ZB833-39	4-35	1
10-0429-1	2-235	1
10-0429-1	3-135	1
10-0439-2	2-235	1
10-0429-2	3-135	1
115013-1	2-90	1
115013-1	4-60	1
115013-2	2-90	1
115013-2	4-60	1

Part No.	Fig. and Index No.	Qty. per Assy.
116999-15C	2-140	2
116999-15C	3-55	2
120646-1C	2-145	1
120646-1C	3-60	1
289-701-27	2-30	4
289-701-27	4-30	4
37001-39	2-63	1
37001-39	4-35	1
61-23100-2	2-40	1
61-23100-5	2-40	1
61-23100-5	3-5	1
61-23100-8	3-5	1
61-23100-8	5-10	1
6203	2-105	2
6203	3-25	1
63-10155	2-20	8
63-10155	4-20	8
65-79165-13	2-485	1
65-79165-14	2-485	1
65-79165-15	2-500	1
65-79165-16	2-500	1
65-79165-17	2-490	1
65-79165-17	2-495	1
65-79165-18	2-490	1
65-79165-18	2-495	1
65-79165-19	2-435	1
65-79165-19	2-440	1
65-79165-20	2-435	1
65-79165-20	2-440	1
65-79165-21	2-410	1
65-79165-21	4-210	1
65-79165-22	2-410	1
65-79165-22	4-210	1
65-79165-31	2-150	2
65-79165-31	3-65	2
65-79165-32	2-70	1
65-79165-32	2-155	1
65-79165-33	2-525	1
65-79165-33	3-200	1
65-79165-33	3-275	1

BOEING
COMMERCIAL JET
OVERHAUL MANUAL

65-82721
DASH NUMBERS LIMITED

Part No.	Fig. and Index No.	Qty. per Assy.	Part No.	Fig. and Index No.	Qty. per Assy.
65-79165-34	2-525	1	65-80173-23	3-270	1
65-79165-34	3-200	1	65-80173-24	3-270	1
65-79165-34	2-275	1	65-80173-27	11-405	1
65-79165-35	2-325	1	65-80173-28	2-405	1
65-79165-35	4-120	1	65-80173-29	5-205	1
65-79165-35	4-125	1	65-80173-30	5-205	1
65-79165-35	5-125	1	65-80173-31	250	1
65-79165-36	2-325	1	65-80173-32	3-250	1
65-79165-36	4-120	1	65-80173-33	4-205	1
65-79165-36	4-125	1	65-80173-34	4-205	1
65-79165-36	5-125	1	65-80173-39	2-405	1
65-79165-41	2-485	1	65-80173-40	2-405	1
65-79165-41	4-285	1	65-82721-15	2-5	2
65-79165-42	2-485	1	65-82721-15	4-5	2
65-79165-42	4-285	1	65-82721-16	2-330	1
65-79165-43	2-500	1	65-82721-16	4-130	1
65-79165-43	4-300	1	65-82721-17	4-135	1
65-79165-44	2-500	1	65-82721-18	4-135	1
65-79165-44	4-300	1	65-82721-55	5-120	1
65-79165-5	2-300	1	65-82721-56	5-120	1
65-79165-5	3-165	1	65-82721-57	4-115	1
65-79165-51	2-435	1	65-82721-58	4-115	1
65-79165-51	2-440	1	65-82721-59	3-195	1
65-79165-51	4-235	1	65-82721-60	3-195	1
65-79165-51	4-240	1	65-82721-73	5-100	1
65-79165-52	2-435	1	65-82721-76	2-320	1
65-79165-52	2-440	1	65-82721-83	1-1	RF
65-79165-52	4-235	1	65-82721-83	2-1	RF
65-79165-52	4-240	1	65-82721-84	1-1	RF
65-79165-53	2-490	1	65-82721-84	2-1	RF
65-79165-53	2-495	1	65-82721-85	2-320	1
65-79165-53	4-290	1	65-82721-87	1-1	RF
65-79165-53	4-295	1	65-82721-87	3-1	RF
65-79165-54	2-490	1	65-82721-88	1-1	RF
65-79165-54	2-495	1	65-82721-88	3-1	RF
65-79165-54	4-290	1	65-82721-89	1-1	RF
65-79165-54	4-295	1	65-82721-89	4-1	RF
65-79165-6	2-300	1	65-82721-90	1-1	RF
65-79165-6	3-165	1	65-82721-90	4-1	RF
65-80172-7	2-10	1	65-82721-91	1-1	RF
65-80172-2	3-10	1	65-82721-91	5-1	RF
65-80172-8	4-10	1	65-82721-92	1-1	RF
65-80173-17	2-405	1	65-82721-92	4-1	RF
65-80173-18	2-405	1	65-82721-93	1-1	RF

65-82721
DASH NUMBERS LIMITED

BOEING 
COMMERCIAL JET
OVERHAUL MANUAL

Part No.	Fig. and Index No.	Qty. per Assy.
65-82721-93	5-1	RF
65-82721-94	1-1	RF
65-82721-94	5-1	RF
66-25423-1	2-505	1
66-25423-1	4-305	1
66-25423-4	2-520	2
66-25423-4	4-310	2
67-907	2-42	1
67-907	3-7	1
67-907	5-15	1
690623A1-4	2-230	1
690623A1-4	3-130	1
691212-13A1-1	2-225	1
691212-13A1-1	3-125	3
69-61458-1	2-480	2
69-61458-1	4-280	2
69-61459-12	2-390	1
69-61459-13	2-390	1
69-61460-3	2-260	1
69-61460-4	2-260	1
69-61460-6	2-245	1
69-61466-3	5-95	1
69-61466-4	5-50	1
69-61468-5	5-170	1
69-61468-5	5-175	1
69-61468-6	5-170	1
69-61468-6	5-175	1
69-61468-7	2-335	1
69-61469-7	3-205	2
69-62320-1	5-75	1
69-62320-2	5-90	1
69-62463-1	2-35	1
69-62660-2	2-120	1
69-62660-2	3-35	1
69-63528-1	4-190	1
69-63528-2	4-190	1
69-63528-3	5-190	1
69-63528-4	3-255	1
69-63528-5	3-245	1
69-63528-6	3-185	1
69-63824-1	2-285-1	1
69-63824-1	3-150	1
69-63824-1	4-75	1
69-63824-1	5-115	1

Part No.	Fig. and Index No.	Qty. per Assy.
69-63901-3	2-375	1
69-63901-3	4-175	1
69-63901-3	4-180	1
69-63901-3	5-185	1
69-63901-4	2-375	1
69-63901-4	4-175	1
69-63901-4	4-180	1
69-63901-4	5-185	1
69-64738-1	2-110	1
69-64747-1	2-25	1
69-64747-1	3-25	1
69-64747-2	4-90	1
69-65258-1	2-190	1
69-65258-1	3-90	1
69-65298-1	2-185	1
69-65298-1	3-85	1
69-65414-1	2-245	1
69-65414-1	3-145	1
710906-13A1	2-165	1
710906-13A1	3-80	1
710907-13A2	2-160	3
710907-13A2	3-75	3
800000095-1	5-5	1
82-19-200-16	4-195	2
82-19-200-16	5-195	2
82-19-200-16	2-395	2
82-19-200-16	3-260	2
82-46-101-39	2-400	2
82-46-101-39	3-265	2
82-46-101-39	4-200	2
82-46-101-39	5-200	2
8-3282	5-70	1