

**BOEING**  
**COMMERCIAL JET**  
**OVERHAUL MANUAL**

TO: ALL HOLDERS OF PASSENGER SERVICE UNIT ASSY OVERHAUL MANUAL, 25-20-95

REVISION NO. 4, DATED SEP 5/79

HIGHLIGHTS

DESCRIPTION OF CHANGE	TOPICS AFFECTED												
	D & O	D/Assy	Cleaning	Insp/Chk	Repair	Assy	F/C	Test	T/Shooting	S/Tools	Storage	IPL	L/Overhaul
Added new top assemblies 65-79164-171 thru -174												X	
Added Fig. 3 to IPL												X	
Added Lanyard assembly (69-63824) components												X	

# PASSENGER SERVICE UNIT ASSEMBLY

## 25-20-95

I BOEING P/N 65B79164-139 thru -156, 165 thru 174

AIRLINE P/N

---

THE FOLLOWING DIRECTIVES APPLY TO THIS SUBJECT:

BOEING SERVICE BULLETIN	BOEING TEMPORARY REVISION	OTHER DIRECTIVES	DATE DIRECTIVE INCORPORATED INTO TEXT
		PRR 17863	Jan 5/75
		PRR 17866	Jan 5/75
		PRR 23605-44	Jan 5/75
		PRR 23741	Jan 5/75
		MC 2030-254	Feb 10/76

**BOEING**   
**COMMERCIAL JET**  
**OVERHAUL MANUAL**

LIST OF EFFECTIVE PAGES					
* Indicates pages revised, added or deleted in latest revision					
F Indicates foldout pages - print one side only					
PAGE	DATE	PAGE	DATE	PAGE	DATE
25-20-95					
* T-1	Sep 5/79				
T-2	BLANK				
* LEP-1	Sep 5/79				
LEP-2	BLANK				
T/C-1	Feb 10/76				
T/C-2	BLANK				
1	Jan 5/75				
2	Feb 10/76				
3	Feb 10/76				
4	May 10/77				
5	Jan 5/75				
* 6	Sep 5/79				
7	Mar 5/78				
* 8	Sep 5/79				
* 9	Sep 5/79				
* 10	Sep 5/79				
* 11	Sep 5/79				
* 12	BLANK				
* 13	Sep 5/79				
* 14	Sep 5/79				
* 15	Sep 5/79				
* 16	Sep 5/79				
* 17	Sep 5/79				
* 18	Sep 5/79				
* 19	Sep 5/79				
* 20	Sep 5/79				
* 21	Sep 5/79				
* 22	BLANK				

**BOEING**   
**COMMERCIAL JET**  
**OVERHAUL MANUAL**

TABLE OF CONTENTS

<u>Paragraph Title</u>	<u>Page</u>
Description and Operation . . . . .	*
Disassembly . . . . .	*
Cleaning. . . . .	*
Inspection/Check. . . . .	*
Repair. . . . .	1
Assembly. . . . .	*
Fits and Clearances (Not applicable)	
Testing . . . . .	*
Trouble Shooting. . . . .	*
Storage Instructions. . . . .	*
Special Tools, Fixtures, and Equipment.(Not applicable)	
Illustrated Parts List. . . . .	3

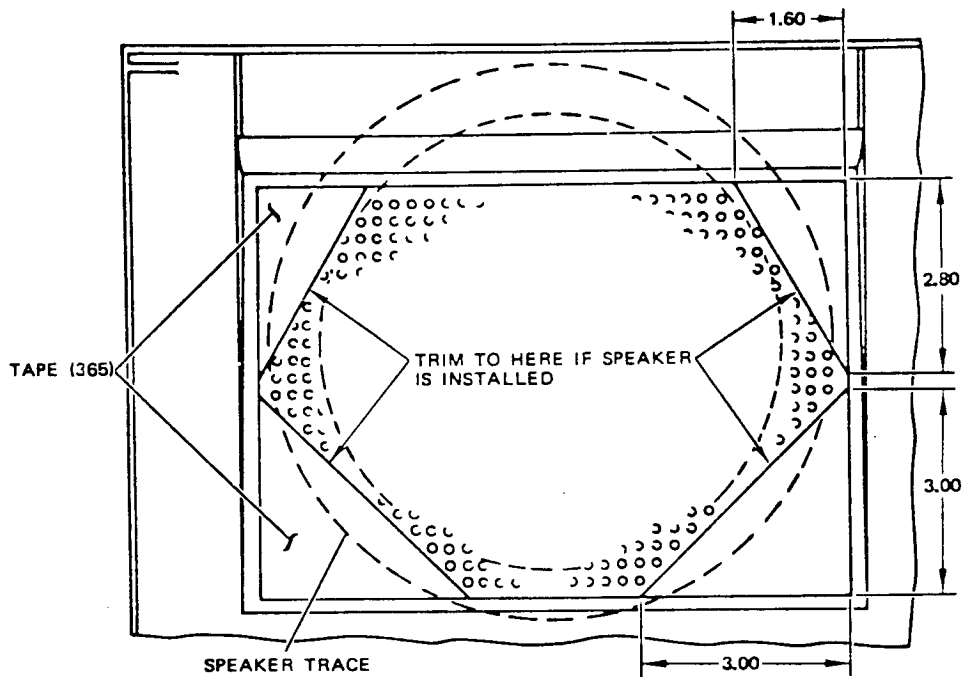
\* This manual contains only refinish and replacement information and illustrated parts list. All other approved procedures for this unit are in 25-20-00, Passenger Service Unit Overhaul Procedures.

1. REPAIR

A. Materials

NOTE: Use listed material or equivalent substitute.

- (1) 1-inch wide P32 vinyl tape (white) (5, Fig. 2); 3-inch wide P32 vinyl tape (white) (365); Permacel Div., Johnson and Johnson, Inc., U.S. Highway 1, New Brunswick, New Jersey 08901



ALL DIMENSIONS ARE IN INCHES

Tape Application  
Figure 1

**BOEING**  
**COMMERCIAL JET**  
**OVERHAUL MANUAL**

65-79164  
DASH NUMBERS LIMITED

B. Refinish

CAUTION: DO NOT USE HI-SPEED LACQUER TO REFINISH POLYCARBONATE PLASTIC PARTS. IT WILL CAUSE INSTANT DETERIORATION THAT MAY NOT BE VISUALLY DETECTABLE.

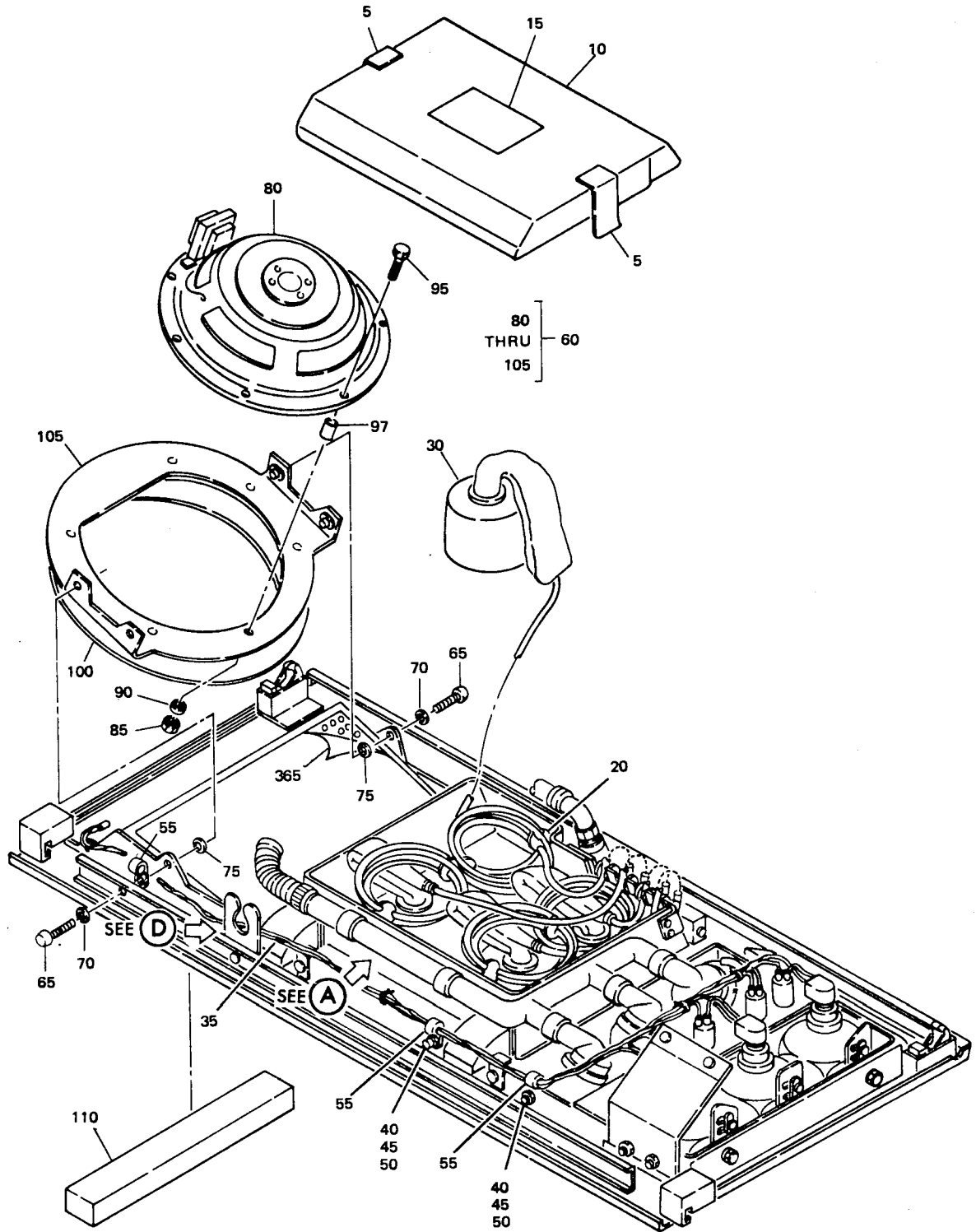
NOTE: Refer to 20-30-02 for stripping of protective finishes, and to 20-41-01 for explanation of F and SRF finish codes.

- (1) Mount assembly (105, Fig. 2) -- Alodize or anodize and prime (SRF-2.30) all over. Material: Alum alloy.
- (2) Heat shield (295) -- Apply two coats hi-speed lacquer, BAC711 white (F-14.904-711) all over. Material: Alum alloy.
- (3) Basic PSU assembly (370) -- Refinish per operator's standard material and color scheme.

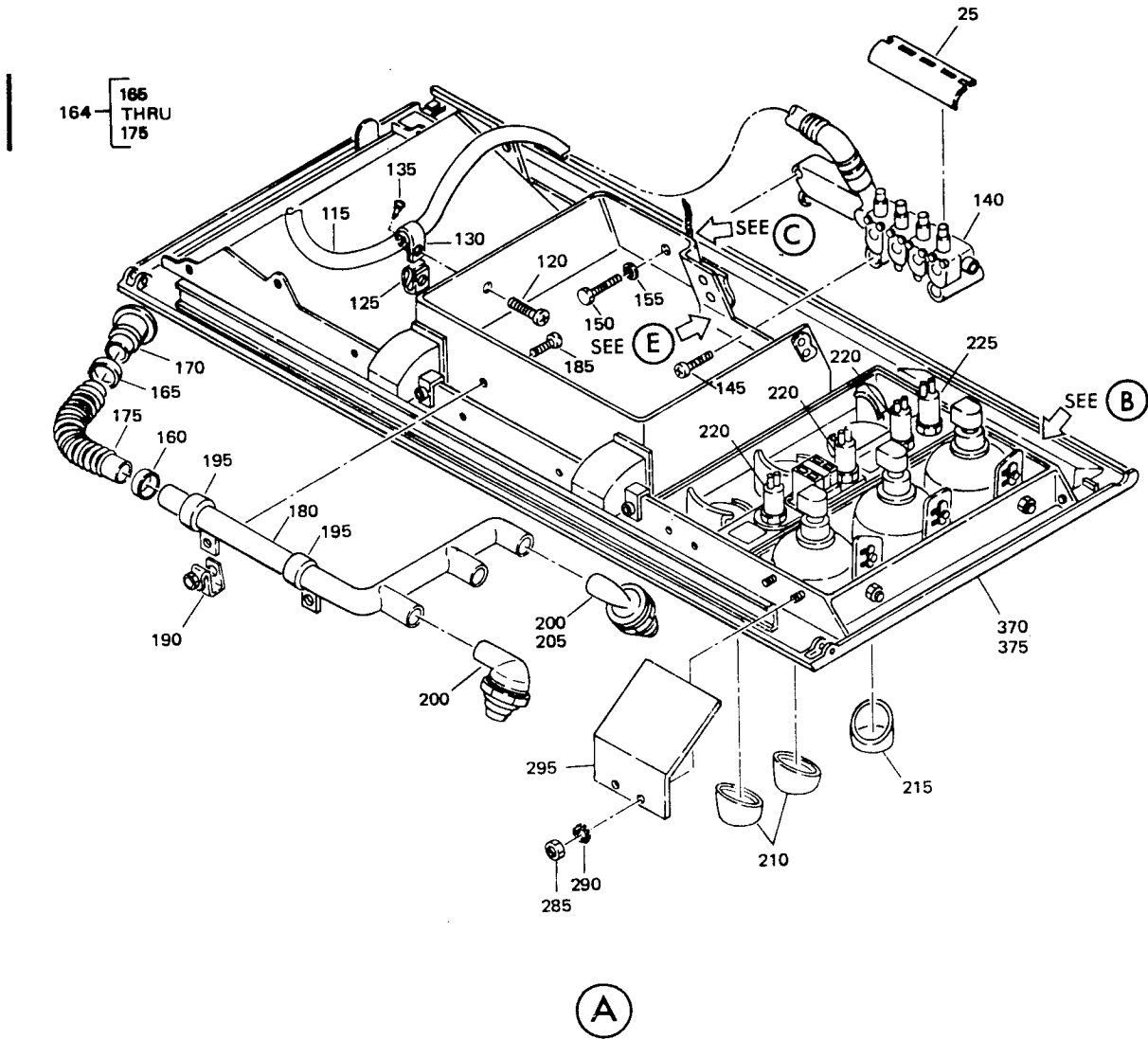
C. Replacement

- (1) Replace tape (365) if required. Trim tape on units having speaker assemblies (60) installed per Fig. 1.
  - (a) Paint speaker grille face after tape is applied, per applicable color code, to cover tape adhesive exposed through speaker grille holes.

2. ILLUSTRATED PARTS LIST

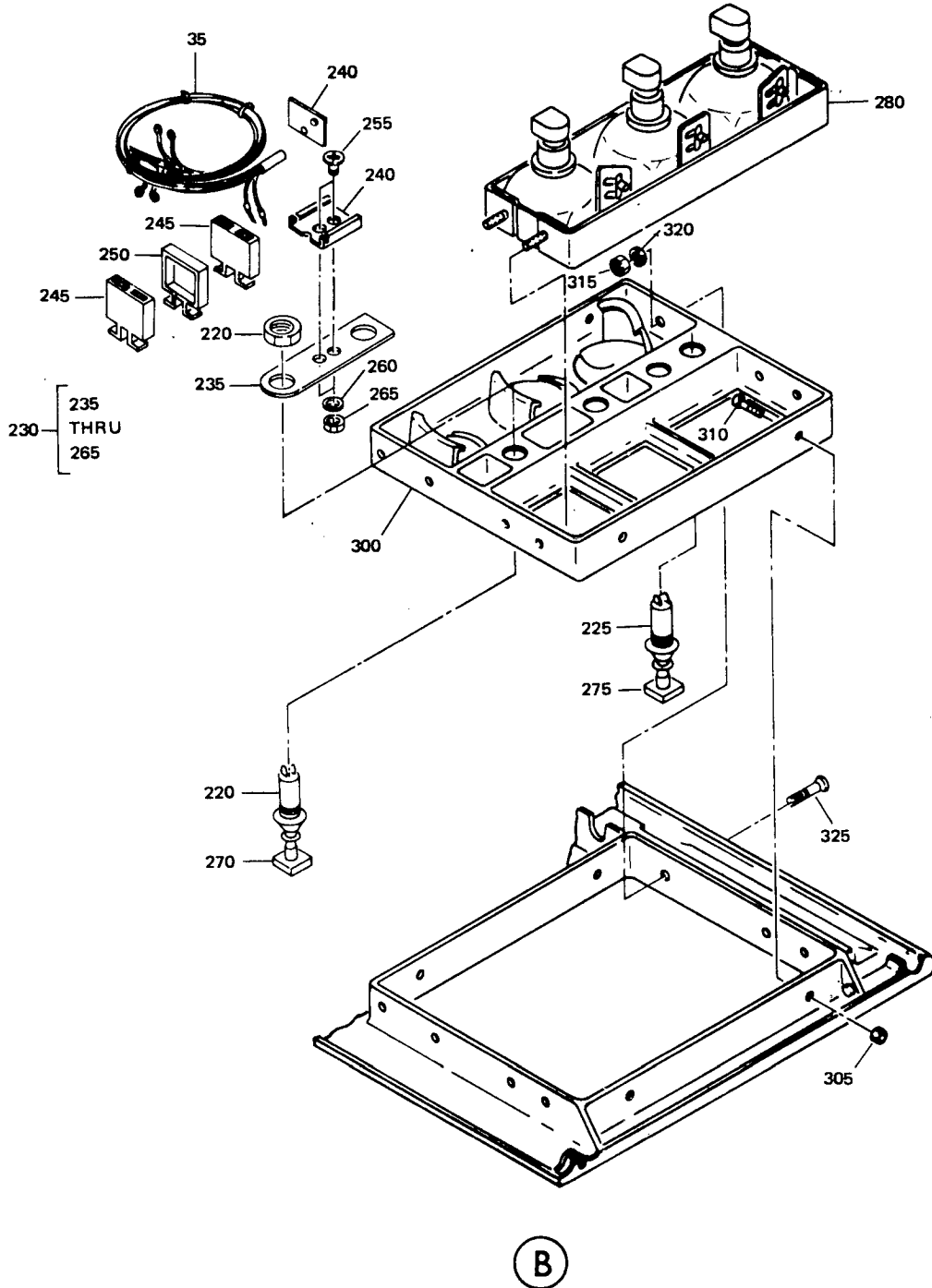


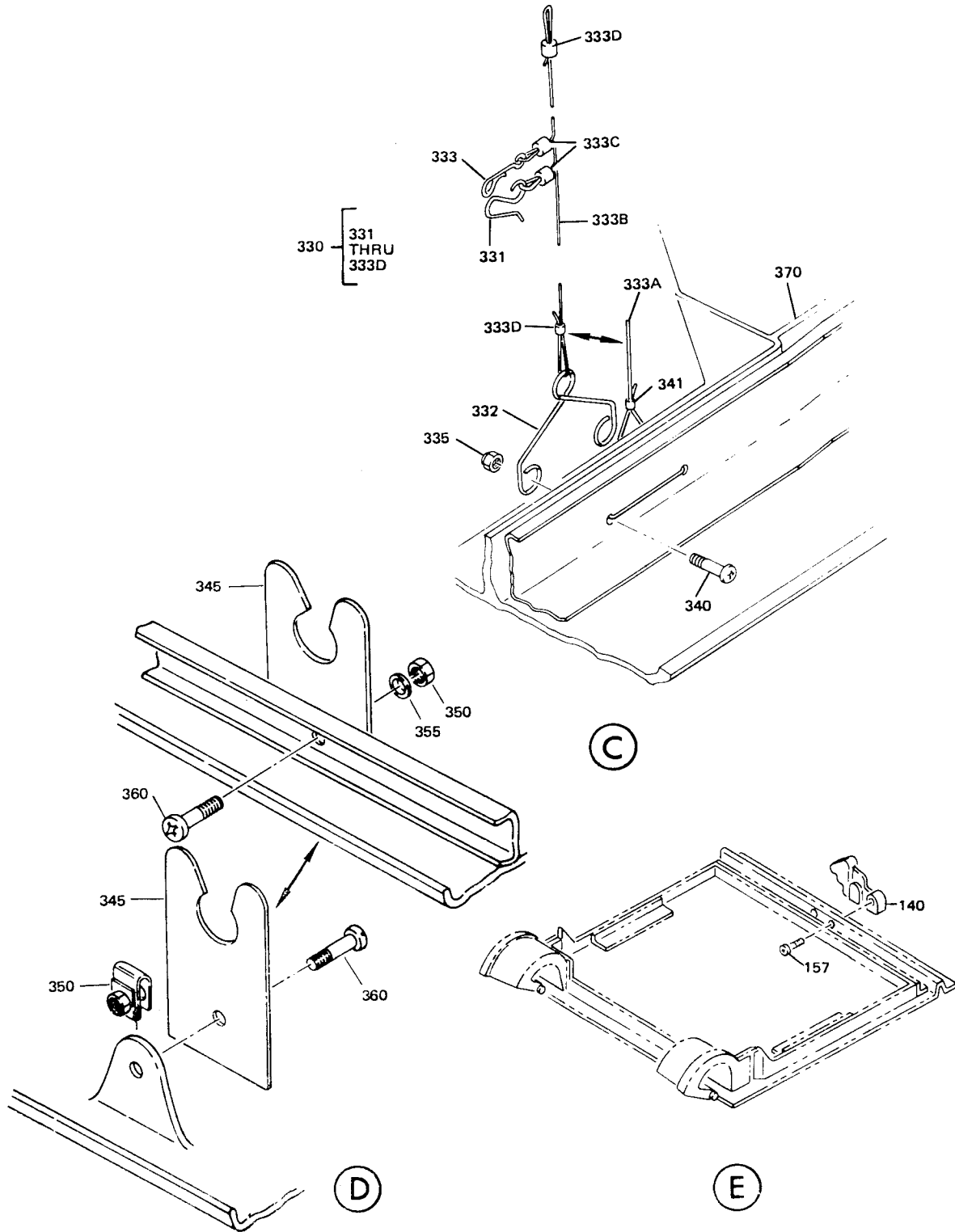
Passenger Service Unit Assembly  
Figure 2 (Sheet 1)



Passenger Service Unit Assembly  
 Figure 2 (Sheet 2)







Passenger Service Unit Assembly  
 Figure 2 (Sheet 4)

**BOEING**  
**COMMERCIAL JET**  
**OVERHAUL MANUAL**

FIG. & ITEM NO.	PART NO.	AIRLINE PART NUMBER	N O M E N C L A T U R E							USE CODE	QTY PER ASSY
			1	2	3	4	5	6	7		
2-											
1	65-79164-139									A	RF
1	65-79164-140									B	RF
1	65-79164-141									C	RF
1	65-79164-142									D	RF
1	65-79164-143									E	RF
1	65-79164-144									F	RF
1	65-79164-145									G	RF
1	65-79164-146									H	RF
1	65-79164-147									I	RF
1	65-79164-148									J	RF
1	65-79164-149									K	RF
1	65-79164-150									L	RF
1	65-79164-151									M	RF
1	65-79164-152									N	RF
1	65-79164-153									O	RF
1	65-79164-154									P	RF
1	65-79164-155									Q	RF
1	65-79164-156									R	RF
1	65-79164-165									S	RF
1	65-79164-166									T	RF
1	65-79164-167									U	RF
1	65-79164-168									V	RF
1	65-79164-169									W	RF
1	65-79164-170									X	RF
5	65-79164-3										2
10	65-80172-7										1
										ACEGI KMOQS UW	
10	65-80172-8										1
										BDFHJ LNPRT VX	
15	BAC27DPA465										1
20	63-10155									AB	8
										K-X	
20	63-10155									C-F	4
20	63-10155									G-J	6
25	69-64747-1										1
30	289-701-27									AB	4
										K-X	
30	289-701-27									C-F	2
30	289-701-27									G-J	3

**BOEING**  
**COMMERCIAL JET**  
**OVERHAUL MANUAL**

65-79164  
DASH NUMBERS LIMITED

FIG. & ITEM NO.	PART NO.	AIRLINE PART NUMBER	N O M E N C L A T U R E							USE CODE	QTY PER ASSY
			1	2	3	4	5	6	7		
2-35	61-23100-8		. WIRE BUNDLE							A-J	1
35	61-23100-9		. WIRE BUNDLE							O-V	1
35	61-23100-011		. WIRE BUNDLE							K-N	1
			ATTACHING PARTS							WX	1
40	BACS12CB08		. SCREW *[1]								4
40	BACS12CB08		. SCREW *[1]								5
45	AN960PD8		. WASHER *[1]								4
45	AN960PD8		. WASHER *[1]								5
50	BACN10FX83		. NUT *[1]								4
50	BACN10FX83		. NUT *[1]								5
55	BACC10DK		. CLAMP *[2]								5
			-----*								
60	69-61466-4		. SPEAKER ASSY							ABEFI	1
			ATTACHING PARTS							JM-R	
			. SCREW (REFLS NAS 603-5P)							U-X	
65	BACS12CB3-5P		. WASHER								4
70	AN960PD6L		. WASHER								4
75	NAS549-8		. WASHER								AR
			-----*								
80	8EU2986		. . SPEAKER, V07109								1
80	8-3282		. . SPEAKER, V26234								1
80	C8TS-C8800		. . SPEAKER, V32001								1
			ATTACHING PARTS								
85	BACN10JC3		. . NUT								4
90	AN960C10L		. . WASHER								4
95	NAS514P1032-9		. . SCREW								4
97	NAS43DD3-14		. . SPACER (USE WITH 8-3282)								4
97	NAS43DD3-16		. . SPACER (USE WITH C8TS-C8800)								4
			-----*								
100	65-61466-3		. . TAPE, SEALING								AR
105	69-62320-1		. . MOUNT ASSY, SPEAKER								1
110	800000095-2		. BASE, V05617 (BOEING 10-61892-2)							AB	1
110	800000095-1		. BASE, V05617 (BOEING 10-61892-1)							C-X	1
115	ZH833-39		. HOSE, OXYGEN, V02217 (BOEING 10-60174-39)								1
115	37001-39		. HOSE, OXYGEN, V24984 (BOEING 10-60174-39)								1
			ATTACHING PARTS								
120	NAS602-8P		. SCREW								1
125	BACN10FX83		. NUT								1

65-79164  
DASH NUMBERS LIMITED

**BOEING**  
**COMMERCIAL JET**  
**OVERHAUL MANUAL**

FIG. & ITEM NO.	PART NO.	AIRLINE PART NUMBER	N O M E N C L A T U R E							USE CODE	QTY PER ASSY
			1	2	3	4	5	6	7		
2-											
130	BACC10DK7										1
135	BACP20BA1										1
140	115013-01									ACEGI KMSUW	1
140	802078-00									ACEGI KMSUW	1
140	115013-02									BDFHJ LNTVW	1
140	802078-01									BDFHJ LNTVX	1
140	115013-03									OQ	1
140	802078-02									OQ	1
140	115013-04									PR	1
140	802078-03									PR	
145	BACS12CB3-22										2
150	BACS12CB3-20										1
155	MS35335-32										1
157	BACS12CB04-9										2
160	6203										1
164	69-68932-1										1
164	69-68932-2										1
165	MS3367-4-9										1
170	69-64738-1										1
175	BE406-3										1
175	AD604-3										1
180	69-62660-2										1
185	BACS12CB08-8P										2
190	BACN10FX83										2
195	BACC10DK12										2
200	L16999-15C									A-N S-X	2

**BOEING**  
**COMMERCIAL JET**  
**OVERHAUL MANUAL**

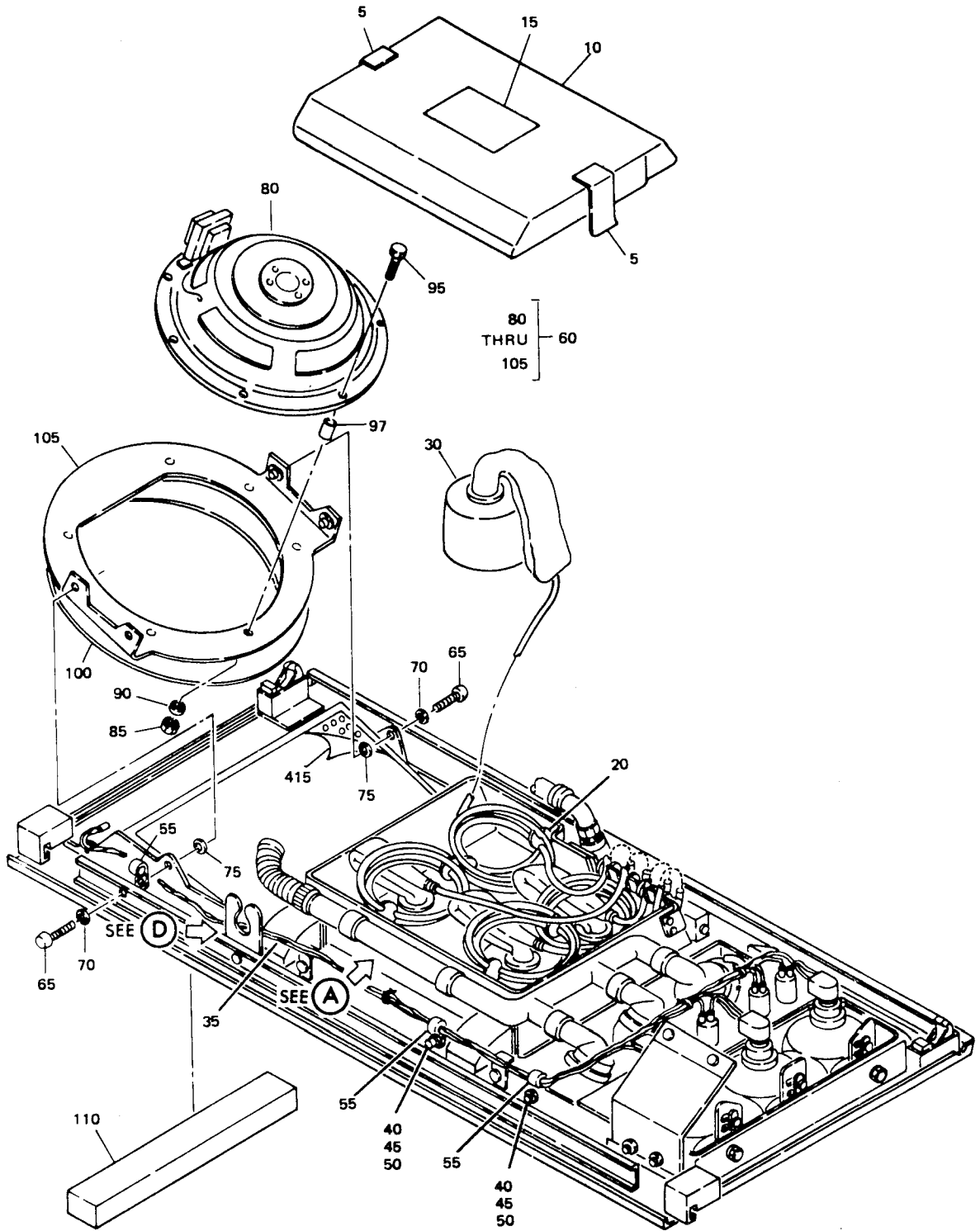
65-79164  
DASH NUMBERS LIMITED

FIG. & ITEM NO.	PART NO.	AIRLINE PART NUMBER	N O M E N C L A T U R E							USE CODE	QTY PER ASSY
			1	2	3	4	5	6	7		
2-200	1947-1		.							O-R	3
205	I20646-1C		.							A-N S-X	1
210	65-79165-31		.								2
215	65-79165-32		.								1
220	710907-13A2		.								3
225	710906-13A1		.								1
230	69-65298-1		.								1
235	69-65258-1		.								1
240	AMY0110T-8		.								1
245	BACM15C1A		.								2
250	YHLZ1C-8		.								1
255	BACR15DA6-2		.								2
255	MS20604B6W2		.								2
255	NAS602-7		.								2
260	AN960PD8L		.								2
265	BACN10JCO8		.								2
270	691212-13A1-1		.								3
275	690623-A1-4		.							A-N	1
275	720905C1		.							OP	1
275	65-79164-158		.								1
275	932501XXX		.							Q-V	1
280	10-0429-1		.							ACEGI KMOQS UW	1
280	10-0429-2		.							BDFHJ LNPRT VX	1
285	MS35649-282		.								4
290	MS35335-31		.								4
295	69-65414-1		.								1
300	65-79165-5		.							ACEGI KMOQS UW	1
300	65-79165-6		.							BDFHJ LNPRT VX	1

**BOEING**  
**COMMERCIAL JET**  
**OVERHAUL MANUAL**

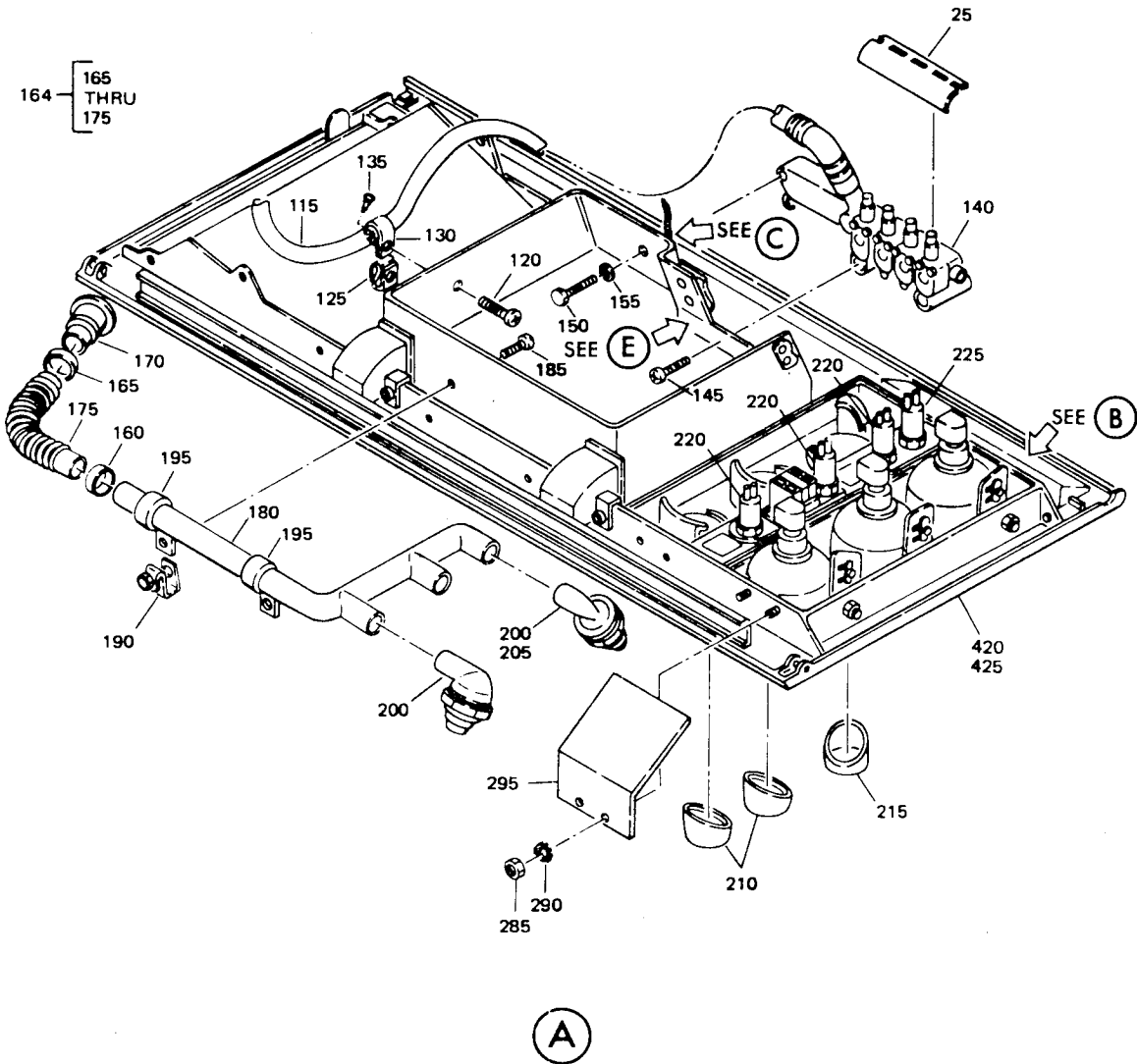
FIG. & ITEM NO.	PART NO.	AIRLINE PART NUMBER	N O M E N C L A T U R E							USE CODE	QTY PER ASSY
			1	2	3	4	5	6	7		
2-			ATTACHING PARTS								
305	BACN10JC08										4
310	NAS514P832-5P										4
315	BACN10JC06										1
320	AN960PD6L										1
325	BACSI2CBO6-8P										1
			-----*								
330	69-63824-3										1
330	69-63824-1										1
331	69-55039-2										1
331	69-55039-1										1
332	63-10191-1										1
333	63-9946										1
333A	69-63824-2										1
333B	69-63824-4										1
333C	MS3367-1-9										2
333D	BACSI3S219C										2
333D	BACSI3S219C										1
			ATTACHING PARTS								
335	BACN10JC08										2
340	NAS602-4P										2
341	MS3367-1-9										1
			-----*								
345	69-64747-2										1
			ATTACHING PARTS								
350	BACN10JC08										1
350	BACN10FX84										1
355	AN960PD8L										1
360	NAS602-7										1
360	NAS602-8P										1
			-----*								
365	65-79164-79								CDGHK		1
									LST		
370	65-79164-137								ACEGI		1
									KMOQS		
									UW		
370	65-79164-138								BDFHJ		1
									LNPR		
									VX		
375	65-79165-61								ACEGI		1
									KMOQ		
375	65-79165-62								BDFHJ		1
									LNPR		

- \*[1] USE THREE NUTS, WASHERS AND SCREWS WHEN SPEAKER IS NOT INSTALLED.
- \*[2] SIZE TO FIT
- \*[3] NUT, WASHER AND SCREW OPTIONAL TO RIVET
- \*[4] COLOR SENSITIVE PART, USE COLOR CONFORMING TO AIRLINE REQUIREMENTS.

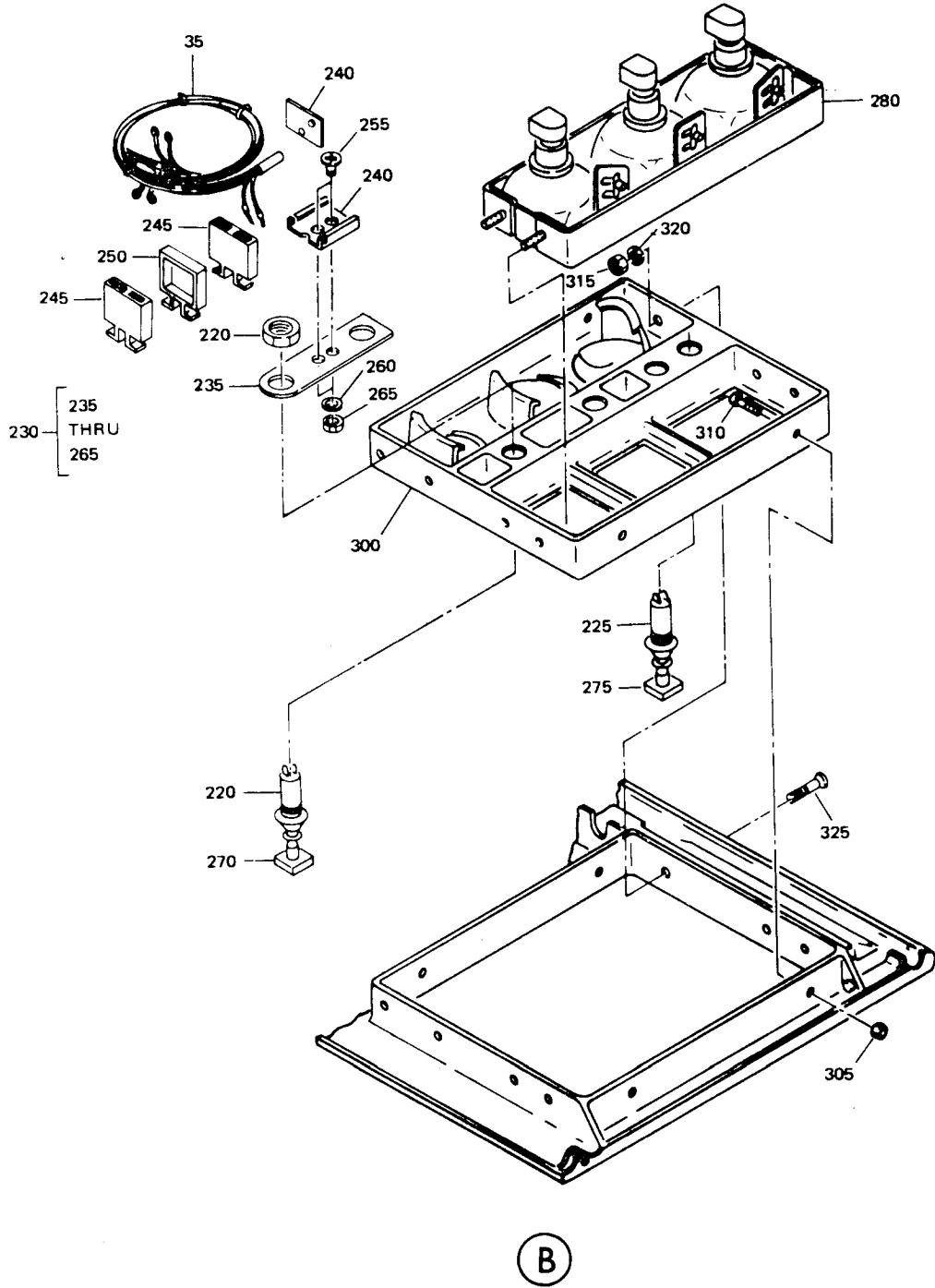


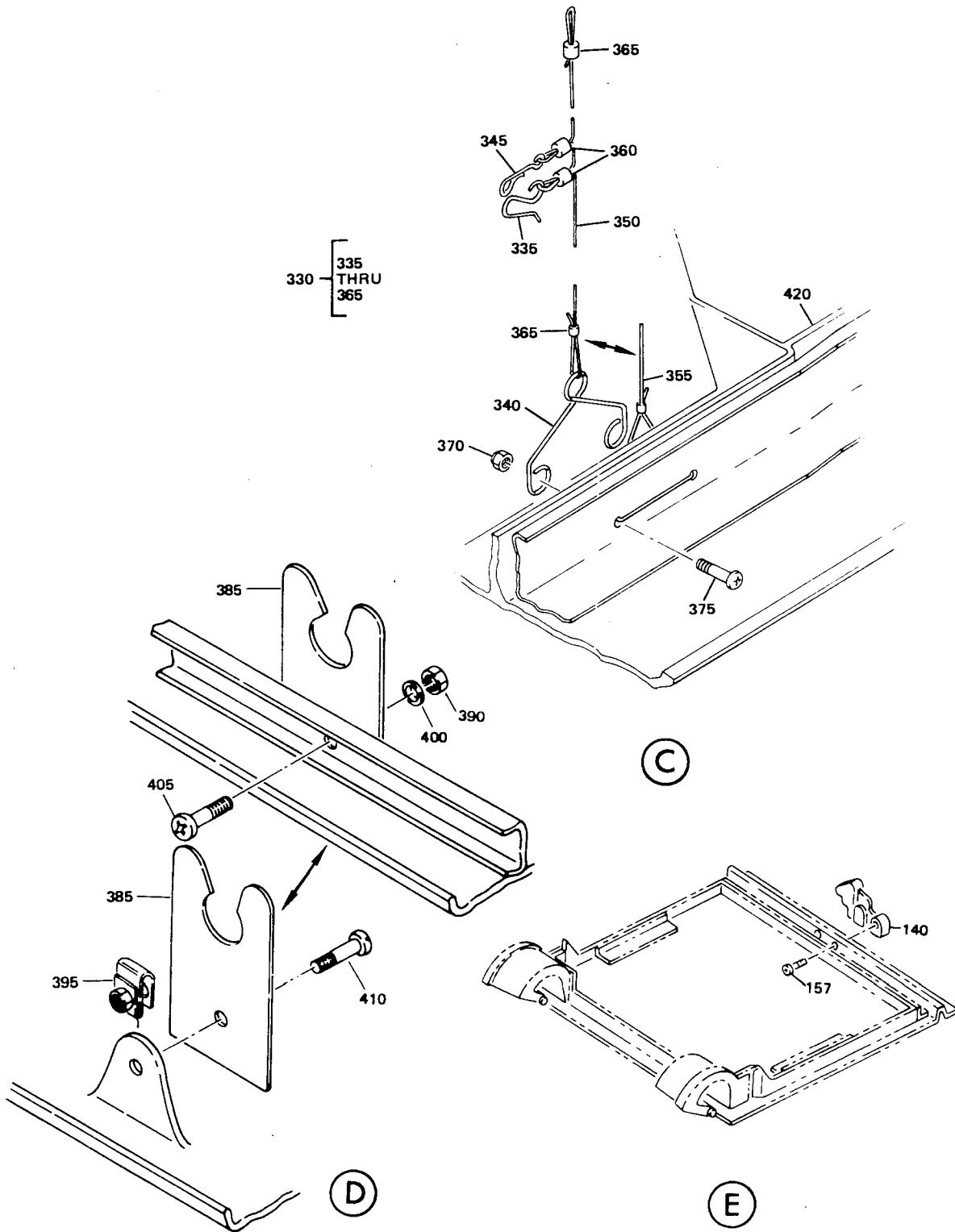
Passenger Service Unit Assembly  
Figure 3 (Sheet 1)





Passenger Service Unit Assembly  
Figure 3 (Sheet 2)





Passenger Service Unit Assembly  
 Figure 3 (Sheet 4)

**BOEING**  
**COMMERCIAL JET**  
**OVERHAUL MANUAL**

FIG. & ITEM NO.	PART NO.	AIRLINE PART NUMBER	N O M E N C L A T U R E							USE CODE	QTY PER ASSY
			1	2	3	4	5	6	7		
3-	65-79164-171									A	RF
	65-79164-173									B	RF
	65-79164-172									N	RF
	65-79164-174									O	RF
5	65-79164-3										2
10	65-80172-7									AB	1
10	65-80172-8									NO	1
15	BAC27DPA465										1
20	63-10155										8
25	69-64747-1										1
30	289-701-27										4
35	61-23100-8										1
40	BACS12CB08										5
45	AN96OPD8										4
50	BACN10JCO8										4
51	BACN10FX84										1
55	BACC10DK										5
60	69-61466-4										1
										BO	
65	BACS12CS12CB3										4
	-5P										
70	AN90OPD6L										4
75	NAS549-8										AR
80	8EU2986										1
80	8-3282										1
85	BACN10JOC3										4
90	AN96OCL01										4
95	NAS514P1032-9										4
100	65-61466-3										AR
105	69-62320-1										1
110	800000095-1										1
115	ZH833-40										1
115	37001-40-1										1

**BOEING**  
**COMMERCIAL JET**  
**OVERHAUL MANUAL**

65-79164  
DASH NUMBERS LIMITED

FIG. & ITEM NO.	PART NO.	AIRLINE PART NUMBER	N O M E N C L A T U R E							USE CODE	QTY PER ASSY
			1	2	3	4	5	6	7		
3-			ATTACHING PARTS								
120	NAS602-8P		. SCREW								1
125	BACN10FX83		. NUT								1
130	BACC10DK7		. CLAMP								1
135	BACP20BA1		. PLUG								1
			-----*-----								
140	115013-01		. MANIFOLD ASSY, V16827 (BOEING 10-60513-7)							AB	1
140	802078-00		. MANIFOLD ASSY, V53655 (BOEING 10-60513-11)(OPT TO 10-60513-7)							AB	1
140	115013-02		. MANIFOLD ASSY, V16827 (BOEING 10-60513-8)							NO	1
140	802078-01		. MANIFOLD ASSY, V53655 (BOEING 10-60513-12)(OPT TO 10-60513-8)							NO	1
			ATTACHING PARTS								
145	BACS12CB3-22		. SCREW								2
150	BACS12CB3-20		. SCREW								1
155	MS35335-32		. WASHER								1
157	BACS12CB04-9		. SCREW								2
			-----*-----								
160	6203		. CLAMP, V81646								1
164	69-68932-1		. DUCT ASSY, AIR								1
164	69-68932-2		. DUCT ASSY, AIR (OPT)								1
165	MS3367-4-9		. . CLAMP (USED ON 69-68932-2)								1
170	69-64738-1		. . FITTING ASSY, QUICK-DISCONNECT								1
175	BE406-3		. . DUCT, AIR, V05399								1
175	AD604-3		. . DUCT, AIR, V21868 (OPT)								1
180	69-62660-2		. MANIFOLD								1
			ATTACHING PARTS								
185	BACS12CB08-8P		. SCREW (REFLS NAS 602-8P)								2
190	BACN10FX83		. NUT								2
195	BACC10DK12		. CLAMP								2
			-----*-----								
200	L16999-15C		. OUTLET, AIR, V17744 (BOEING 10-60141-18) *[4]								2
205	L20646-1C		. OUTLET, AIR, V17744 (BOEING 10-60141-19) *[4]								1
210	65-79165-31		. CONE, AIR *[4]								2
215	65-79165-32		. CONE, AIR *[4]								1
220	710907-13A2		. SWITCH, LIGHT, V97564								3
225	710906-13A1		. SWITCH, CALL, V97564								1
230	69-65298-1		. BLOCK ASSY, TERMINAL								1
235	69-65258-1		. . BASE								

**BOEING**   
**COMMERCIAL JET**  
**OVERHAUL MANUAL**

FIG. & ITEM NO.	PART NO.	AIRLINE PART NUMBER	N O M E N C L A T U R E							USE CODE	QTY PER ASSY
			1	2	3	4	5	6	7		
3-240	AMY0110T-8		. . . BOTTOM AND KEEPER, V09922 (2 PIECES)								1
245	BACM15C1A		. . . CONNECTOR								2
250	YHLZ1C-8		. . . SPACER, V09922								1
255	BACR15DA6-2		DELETED								
255	MS20604B6W2		. . . RIVET, BLIND *[3]								2
255	NAS602-7		. . . SCREW *[3]								2
260	AN960PD8L		. . . WASHER *[3]								2
265	BACN10JC08		. . . NUT *[3]								2
270	691212-13A1-1		. LENS, LIGHT SWITCH, V97564 *[4]								3
275	932501XXX		. LENS, CALL LIGHT, V97564 *[4]								1
280	10-0429-1		. LIGHT ASSY, READING, V72914 (BOEING 10-61779-1) *[4]							AB	1
280	10-0429-2		. LIGHT ASSY, READING, V72914 (BOEING 10-61779-2) *[4]							NO	1
			ATTACHING PARTS								
285	MS35649-282		. NUT								4
290	MS35335-31		. WASHER (USED WITH MS35649-282)								4
			-----*-----								
295	69-65414-1		. SHIELD, HEAT								1
300	65-79165-5		. MODULE ASSY *[4]							AB	1
300	65-79165-6		. MODULE ASSY *[4]							NO	1
			ATTACHING PARTS								
305	BACN10JC08		. NUT								4
310	NAS514P832-5P		. SCREW								4
315	BACN10JC06		. NUT								1
320	AN960PD6L		. WASHER								1
325	BACS12CB06-8P		. SCREW (REPLS NAS 601-8P)								1
			-----*-----								
330	69-63824-3		. LANYARD								1
330	69-63824-1		. LANYARD (OPT)								1
335	69-55039-2		. . . HOOK, SAFETY								1
335	69-55039-1		. . . HOOK (OPT TO 69-55039-2)								1
340	63-10191-1		. . . TERMINAL (USED ON 69-63824-1)								1
345	63-9946		. . . TERMINAL								1
350	69-63824-2		. . . CORD (USED ON 69-63824-1)								1
355	69-63824-4		. . . CORD (USED ON 69-63824-3)								1
360	MS3367-1-9		. . . STRAP (REPLS MS17821-1-9)								2
365	BACS13S219C		. . . SLEEVE (USED ON 69-63824-1)								2
365	BACS13S219C		. . . SLEEVE (USED ON 69-63824-3)								1

**BOEING**  
**COMMERCIAL JET**  
**OVERHAUL MANUAL**

65-79164  
DASH NUMBERS LIMITED

FIG. & ITEM NO.	PART NO.	AIRLINE PART NUMBER	N O M E N C L A T U R E							USE CODE	QTY PER ASSY
			1	2	3	4	5	6	7		
3-			ATTACHING PARTS								
370	BACN10JC08		. NUT (USED WITH 69-63824-1)								2
375	BACSL2CB08-4P		. SCREW (USED WITH 69-63824-1)								2
380	MS3367-1-9		. STRAP (USED ON 69-63824-3)								1
			-----*-----								
385	69-64747-2		. GUIDE, TUBE								1
			ATTACHING PARTS								
390	BACN10JC08		. NUT (USED WITH NAS602-7)								1
395	BACN10FX84		. NUT (OPT) (USED WITH NAS602-8P)								1
400	AN96OPD8L		. WASHER (USED WITH NAS602-7)								1
405	NAS602-7		. SCREW								1
410	NAS602-8P		. SCREW (OPT)								1
			-----*-----								
415	65-79164-79		. TAPE							AN	1
420	65-79164-137		. BASIC ASSY, PSU *[4]							AB	1
420	65-79164-138		. BASIC ASSY, PSU *[4]							NO	1
425	65-79165-61		. . SHELL ASSY (REF 25-20-96)							AB	1
425	65-79165-59		. . SHELL ASSY (OPT)							AB	
425	65-79165-62		. . SHELL ASSY (REF 25-20-96)							NO	1
425	65-79165-60		. . SHELL ASSY (OPT)							NO	

- \*[1] USE THREE NUTS, WASHERS AND SCREWS WHEN SPEAKER IS NOT INSTALLED
- \*[2] SIZE TO FIT
- \*[3] NUT, WASHER AND SCREW OPTIONAL TO RIVET
- \*[4] COLOR SENSITIVE PART, USE COLOR CONFORMING TO AIRLINE REQUIREMENTS

REFERENCE DESIGNATION INDEX (SEE 25-20-00 SCHEMATIC)		
REFERENCE DESIGNATION	PART NUMBER	ITEM NO.
D600P	BACC45FT14-15P	
L3000	10-0429-1	280
L3001	10-0429-2	280
L3002	800000095-1	110
M3001	C8TS-C8800	80
S3000	71906-13A1	225
S3001-S3003	710907-13A2	220
T3000	69-65298-1	230

VENDORS

V02217 PURITAN-BENNETT AERO SYSTEMS DIV., 111 PENN ST., EL SEGUNDO,  
CALIFORNIA 90245

V05399 BEMCO INC., P.O. BOX 68, CENTERTON, ARKANSAS 72719

V05617 BELL INDUSTRIES, FARWEST MFG. DIV., 12410 SE 32ND ST., BELLEVUE,  
WASHINGTON 98005

V07109 OAKTRON INDUSTRIES, INC., 704 30TH ST. MONROE, WISCONSIN 53566

V09922 BURNDY CORP., RICHARDS AVE., NORWALK, CONNECTICUT 06852

V16827 PURITAN - BENNETT AERO SYSTEMS, 10800 PFLUMM ROD., LENEXA,  
KANSAS 66210

V17744 LUMINATOR DIV., GULTON INDUSTRIES INC., 1200 E. DALLAS N. PARKWAY,  
PLANO, TEXAS 75074

V21868 H.K. PORTER CO. INC., THERMOID DIV., GOVERNMENT SALES OFFICE, 1627  
PORTER BLDG., 601 GRANT ST., PITTSBURGH, PENNSYLVANIA 15219

V24984 HYDRAFLOW SUPPLY INC., 13259 E. 166TH ST., CERRITOS, CALIFORNIA  
90701

V32001 PEMCOR INC., JENSEN SOUND LABORATORY, 43100 TRANSWORLD RD., SCHILLER  
PARK, ILLINOIS 60176

V34263 CTS OF BROWNSVILLE, INC. 1100 ROOSEVELT ST., BROWNSVILLE TEXAS  
78520

V53655 SCOTT AVIATION DIV OF A-T-O, INC., 225 ERIE ST., LANCASTER, NEW YORK  
14086

V71482 C.P. CLARE AND CO., 3101 PRATT BLVD., CHICAGO, ILLINOIS 60645

V72914 GRIMES DIV., MIDLAND-ROSS CORP., 515 N. RUSSELL, URBANA, OHIO 43978

V81646 PARKER-HANNIFIN CORP. CLAMP AND FLASHER DIV., 1000 PENNSYLVANIA  
AVE., BROOKLYN, NEW YORK 11207

V83564 WEMAC CO., 8475 PACIFIC ST., FOUNTAIN VALLEY, CALIFORNIA 92708

V92114 SIERRA ENGINEERING CO. DIV OF CAPTECH, INC., 123 E. MONTECITO  
AVE., SIERRA MADRE, CALIFORNIA 91024