



OVERHAUL MANUAL

TO: ALL HOLDERS OF PASSENGER SERVICE UNIT BASIC SHELL ASSEMBLY OVERHAUL MANUAL,  
25-20-96

REVISION NO. 1 DATED NOV 10/82

HIGHLIGHTS

DESCRIPTION OF CHANGE	TOPICS AFFECTED												
	D & O	D/Assy	Cleaning	Insp/Chk	Repair	Assy	F/C	Test	T/Shooting	S/Tools	Storage	IPL	L/Overhaul
Changed item numbers of pin assy (15) components and added vendor for spring (120)												X	

**BOEING**   
**COMMERCIAL JET**  
OVERHAUL MANUAL

# PASSENGER SERVICE UNIT BASIC SHELL ASSY

## 25-20-96

BOEING P/N 65-79165-59 thru -62, -69, -70

AIRLINE P/N

THE FOLLOWING DIRECTIVES APPLY TO THIS SUBJECT:

BOEING SERVICE BULLETIN	BOEING TEMPORARY REVISION	OTHER DIRECTIVES	DATE DIRECTIVE INCORPORATED INTO TEXT
		PRR 17866 PRR 23741 PRR 32363	Dec 25/74 Dec 25/74 Dec 25/74

OVERHAUL MANUAL

LIST OF EFFECTIVE PAGES					
* Indicates pages revised, added or deleted in latest revision					
F Indicates foldout pages - print one side only					
PAGE	DATE	PAGE	DATE	PAGE	DATE
25-20-96					
T-1	Dec 25/74				
T-2	BLANK				
* LEP-1	Nov 10/82				
LEP-2	BLANK				
T/C-1	Dec 25/74				
T/C-2	BLANK				
1	Dec 25/74				
2	Dec 25/75				
3	Dec 25/74				
* 4	Nov 10/82				
5	Dec 25/74				
6	Dec 25/74				
7	Dec 25/75				
* 8	Nov 10/82				
* 9	Nov 10/82				
10	BLANK				

**BOEING**   
**COMMERCIAL JET**  
**OVERHAUL MANUAL**

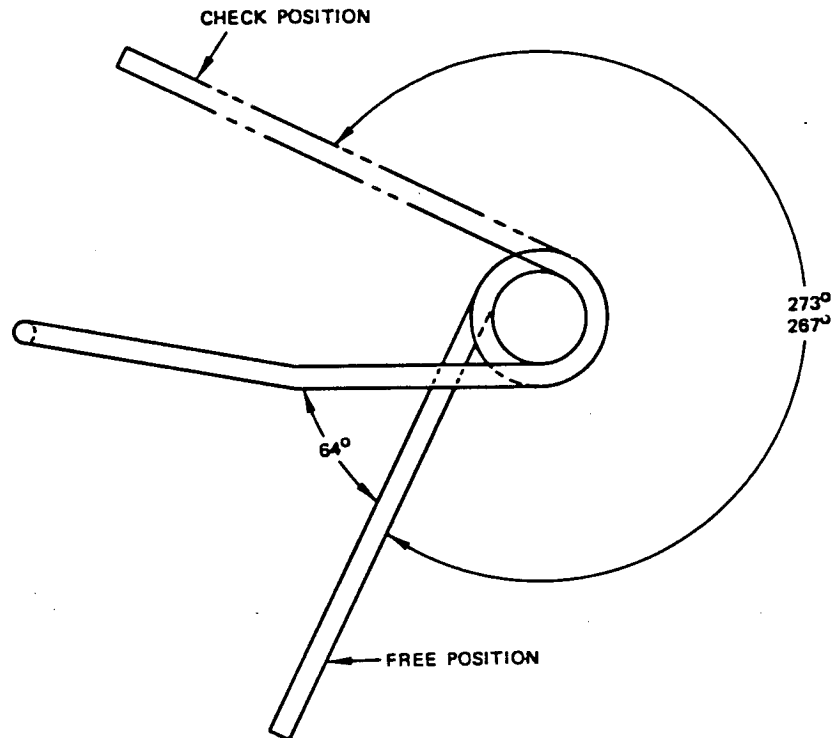
TABLE OF CONTENTS

<u>Paragraph Title</u>	<u>Page</u>
Description and Operation . . . . .	*
Disassembly . . . . .	*
Cleaning. . . . .	*
Inspection/Check. . . . .	1
Repair. . . . .	2
Assembly. . . . .	*
Fits and Clearances . . . . .	None
Testing . . . . .	*
Trouble Shooting. . . . .	*
Storage Instructions. . . . .	*
Special Tools, Fixtures, and Equipment. . . . .	None
Illustrated Parts List. . . . .	3

\*This manual contains only inspection/check and refinish information, and illustrated parts list. All other approved procedures for this unit are in 25-20-00, Passenger Service Unit Overhaul Procedures.

1. INSPECTION/CHECK

- A. Check spring (270, Fig. 2) for free position indicated in Fig. 1, and for a deflection of 267 to 273 degrees under a load of 1.0 pound-inch.



Spring Check Diagram  
Figure 1

**BOEING**   
**COMMERCIAL JET**  
**OVERHAUL MANUAL**

65-79165  
DASH NUMBERS LIMITED

2. REPAIR

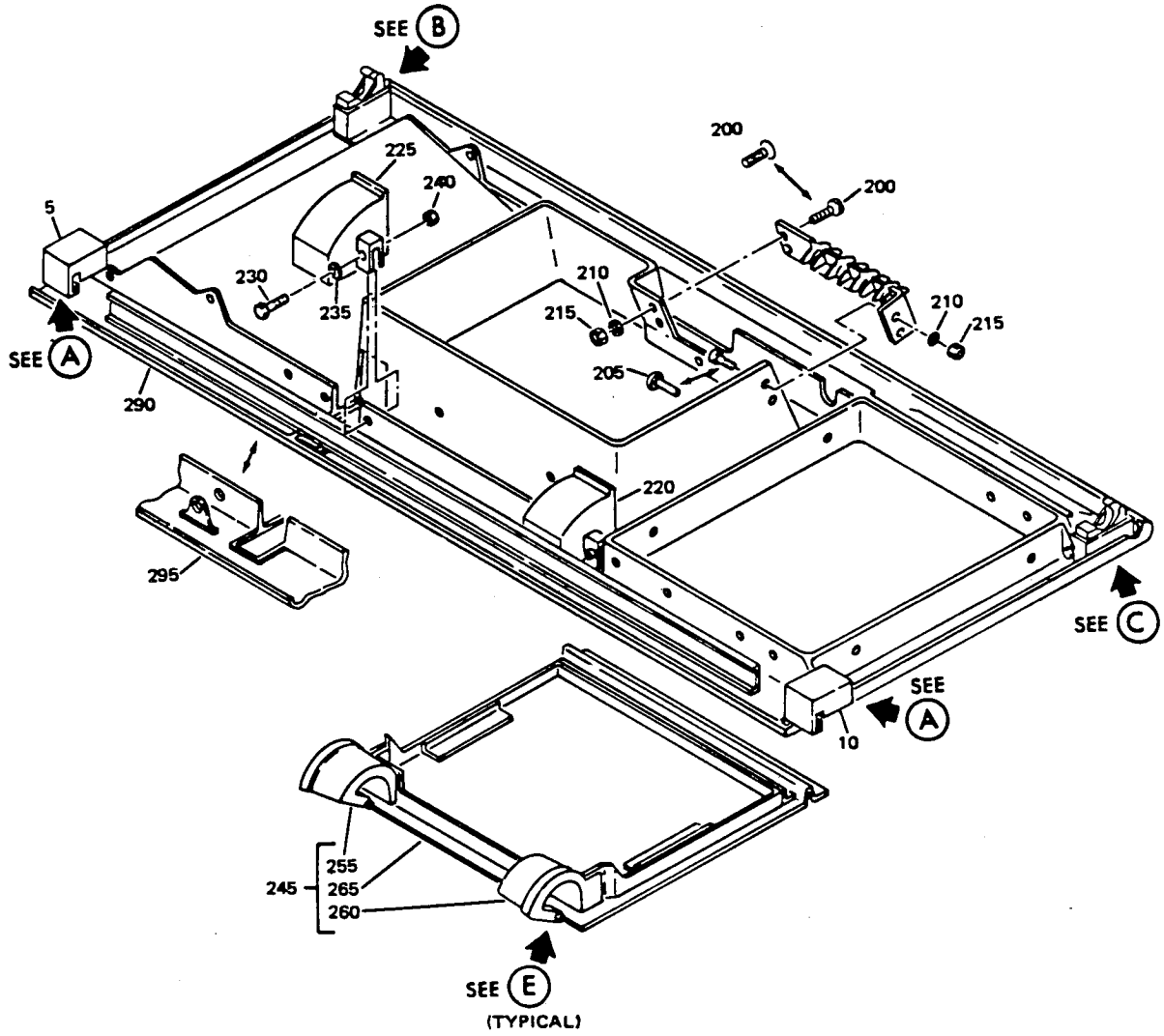
A. Refinish (Fig. 2)

CAUTION: DO NOT USE HI-SPEED LACQUER TO REFINISH POLYCARBONATE PLASTIC PARTS. IT WILL CAUSE INSTANT DETERIORATION THAT MAY NOT BE VISUALLY DETECTABLE.

NOTE: Refer to 20-30-02 for stripping fo protective finishes, and to 20-41-01 for explanation of F and SRF finish codes.

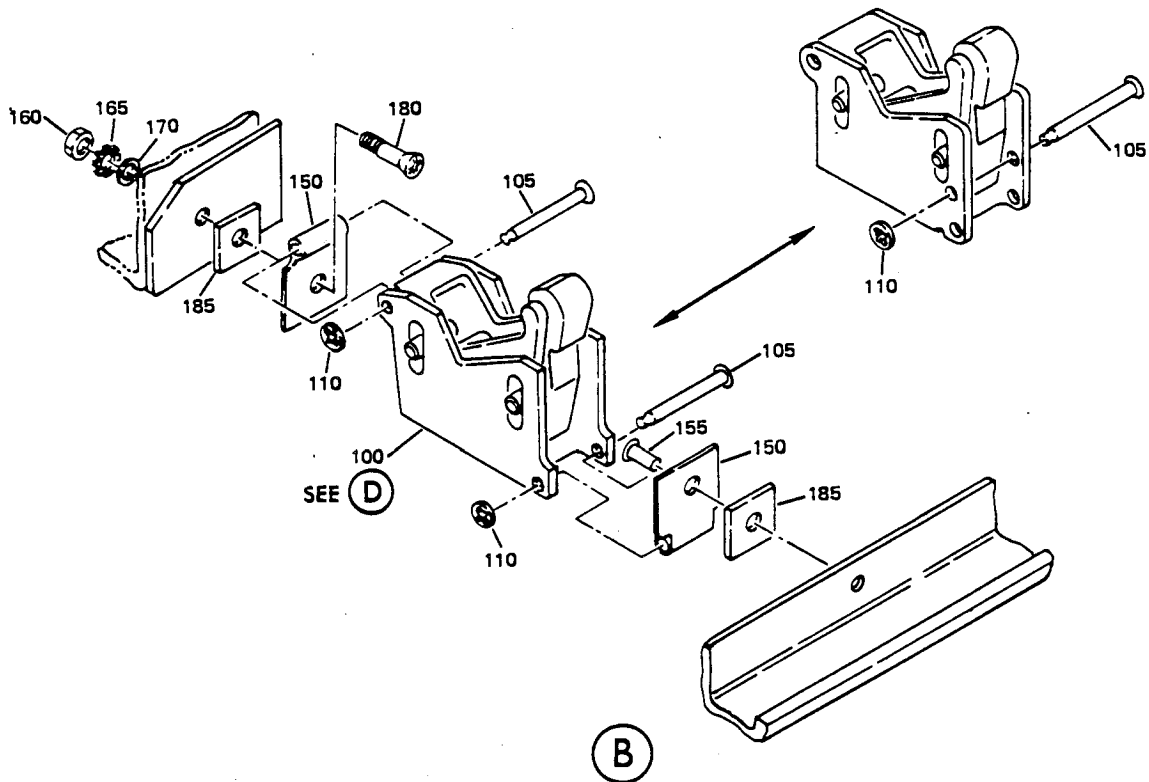
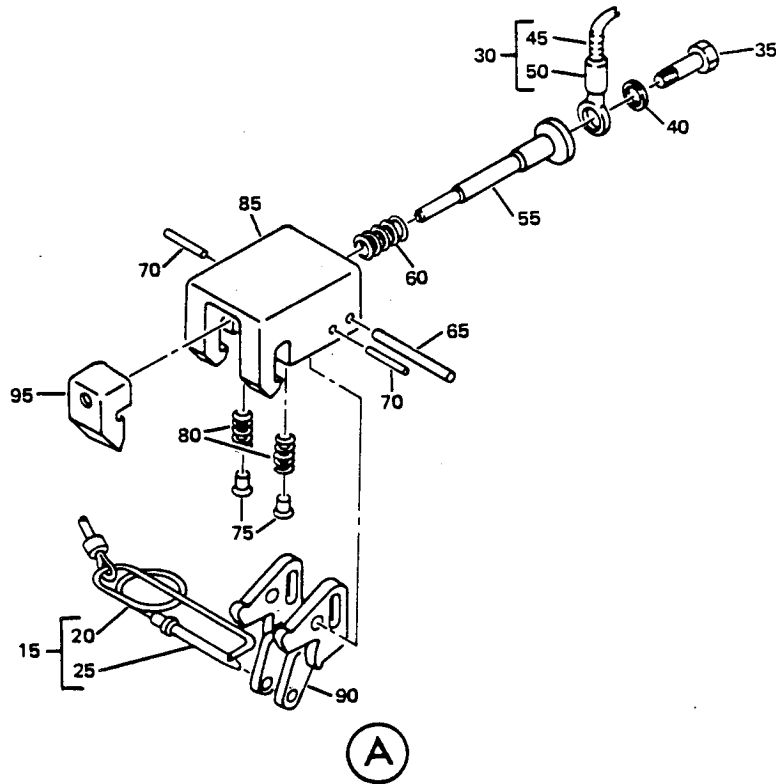
- (1) Plunger (55, 135), body (85, 95, 130, 140), link (90) -- Chromic acid anodize (F-2.26) all over. Material: Al alloy.
- (2) Bolt (125) -- Cadmium plate (F-1.1926) all over. Material: Steel, AMS 4340, 125-145 ksi.
- (3) Support (150) -- Alodize (colored film) or chromic acid anodize followed by one coat EMS 10-11, type 1 primer (SRF-2.30) all over. Optional: Alodize (colored film) (F-2.21) all over. Material: Al alloy.
- (4) Spring (270) -- Cadmium plate, type 2, class 2 per 20-42-05. Material: Steel music wire.

3. ILLUSTRATED PARTS LIST



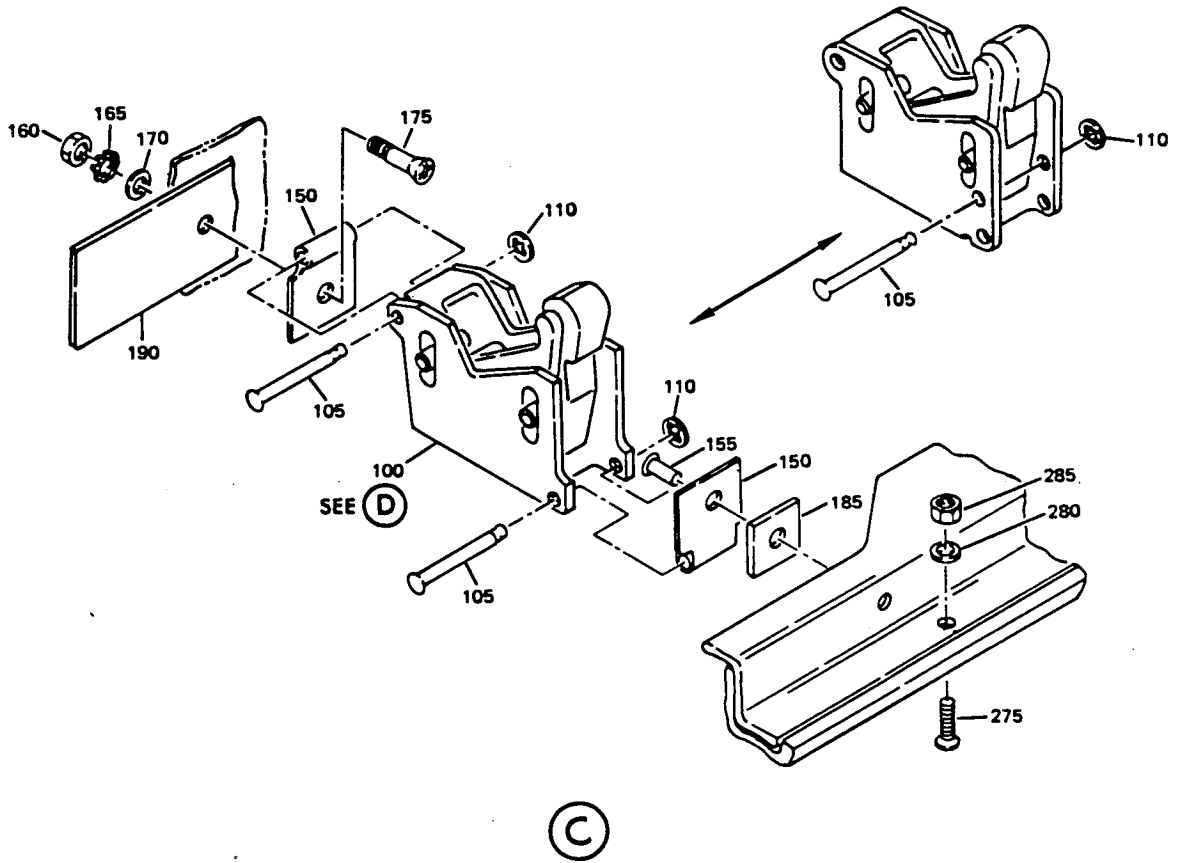
Passenger Service Unit Basic Shell Assembly  
Figure 2 (Sheet 1)

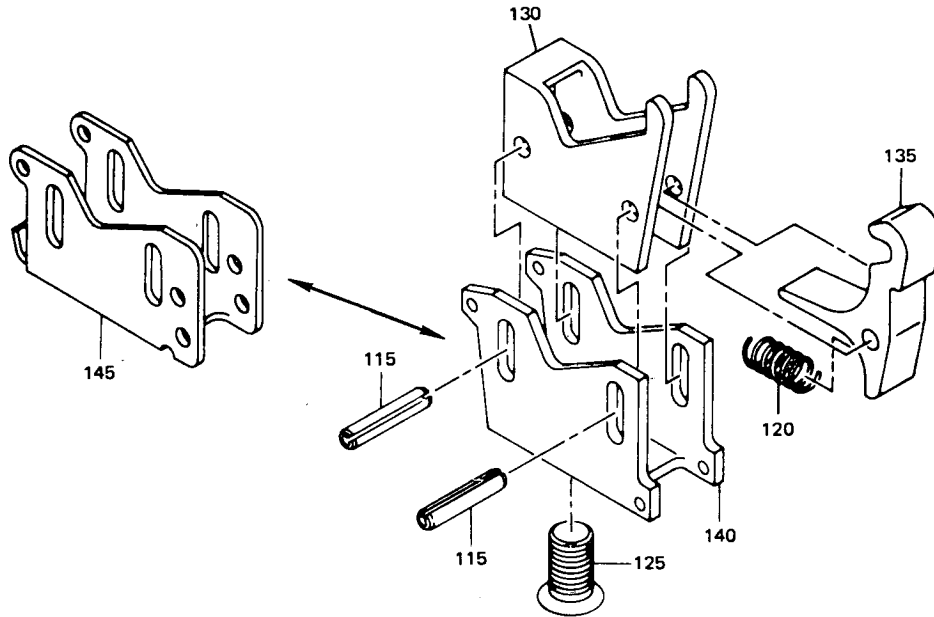
OVERHAUL MANUAL



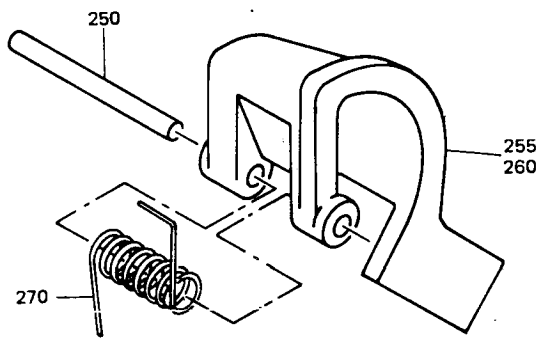
Passenger Service Unit Basic Shell Assembly  
Figure 2 (Sheet 2)







(D)



(E)

Passenger Service Unit Basic Shell Assembly  
Figure 2 (Sheet 4)

**BOEING**   
**COMMERCIAL JET**  
**OVERHAUL MANUAL**

FIG. & ITEM NO.	PART NO.	AIRLINE PART NUMBER	N O M E N C L A T U R E							USE CODE	QTY PER ASSY
			1	2	3	4	5	6	7		
2-1	65-79165-59		PASSENGER SERVICE UNIT BASIC SHELL ASSY							A	RF
1	65-79165-60		PASSENGER SERVICE UNIT BASIC SHELL ASSY							B	RF
1	65-79165-61		PASSENGER SERVICE UNIT BASIC SHELL ASSY							C	RF
1	65-79165-62		PASSENGER SERVICE UNIT BASIC SHELL ASSY							D	RF
1	65-79165-69		PASSENGER SERVICE UNIT BASIC SHELL ASSY							E	RF
1	65-79165-70		PASSENGER SERVICE UNIT BASIC SHELL ASSY							F	RF
5	65-85900-1		. CLAMP ASSY, OUTBD SUPPORT							A-E	1
10	65-85900-2		. CLAMP ASSY, OUTBD SUPPORT								1
15	69-64539-1		. . PIN ASSY								1
20	69-64539-2		. . . RETAINER, SPRING								1
25	69-64539-3		. . . PIN								1
30	69-61465-5		. . LANYARD ASSY								1
35	NAS1191-06P4L		ATTACHING PARTS								
40	AN960PD6		. . SCREW								1
			. . WASHER								1
			-----*								
45	69-61465-6		. . . CORD, NYLON								
50	BACT12AC8		. . . LUG, TERMINAL								1
55	65-85905-1		. . PLUNGER								1
60	RCS3290		. . SPRING, V08205								1
65	NAS607-2-8P		. . PIN								1
70	NAS607-1-4P		. . PIN								2
75	65-85900-3		. . PLUNGER, SPRING								2
80	RCS3289		. . SPRING, V08205								2
85	65-85904-1		. . BODY, CLAMP								1
90	65-85902-1		. . LINK, ROCKER								1
95	65-85903-1		. . BODY, PLUNGER (USED ON 65-85900-1)								1
95	65-85903-2		. . BODY, PLUNGER (USED ON 65-85900-2)								1
100	65-85901-2		. LATCH ASSY, INBD							AB	2
100	65-85901-3		. LATCH ASSY, INBD							CD	2
			ATTACHING PARTS								
105	BACR15BB3DL1		. RIVET							AB	4
105	BACR15BB3DL3		. RIVET							CD	2
110	6100-9		. RETAINER (MCGUIRE BEARING CO., PORTLAND, OR)							AB	4
110	6100-9		. RETAINER (MCGUIRE BEARING CO., PORTLAND, OR)							CD	2
			-----*								

OVERHAUL MANUAL

FIG. & ITEM NO.	PART NO.	AIRLINE PART NUMBER	N O M E N C L A T U R E							USE CODE	QTY PER ASSY
			1	2	3	4	5	6	7		
2-											
115	MS16562-35									AB	2
115	MS16562-34									CD	2
120	RCS3288										1
125	65-85905-3										1
130	65-85907-1										1
135	65-85908-1										1
140	65-85906-1									AB	1
145	69-66979-1									CD	1
150	69-64895-1									AB	4
155	BACR15BA6D									AB	2
160	MS35649-282									AB	2
165	MS35335-31									AB	2
170	AN960PD8									AB	2
175	NAS514P832-4									AB	1
180	NAS514P832-10									AB	1
185	BACS4OR05E06F									AR	3
190	69-65405-1									AB	2
190	69-61459-5									AB	2
195	65-79165-21									ACE	1
195	65-79165-22									BDF	1
200	NAS514P632-6									AB	2
200	BACR15DA4CH									C-F	2
205	NAS601-6P									AB	2
205	NAS601-6B									AB	2
205	BACR15DA4H									C-F	2
210	NAS620-6L									AB	4
215	BACN10JC06									AB	4
220	65-79165-51										1
225	65-79165-52										1
230	NAS623-2-5										4
235	NAS620-8L										4
240	BACN10JC08										4
245	65-79165-41									ACE	1
245	65-79165-42									BDF	1

OVERHAUL MANUAL

FIG. & ITEM NO.	PART NO.	AIRLINE PART NUMBER	N O M E N C L A T U R E							USE CODE	QTY PER ASSY
			1	2	3	4	5	6	7		
2-											
250	MS20253-3-124										
255	65-79165-53										
260	65-79165-54										
265	65-79165-43								ACE		
265	65-79165-44								BDF		
270	69-61458-1										
275	NAS514P440-6										
280	AN960D4L										
285	BACN10JC04										
290	65-79165-39								A		
290	65-79165-40								B		
295	65-79165-63								CE		
295	65-79165-64								DF		

VENDORS

| V08205      RENTON COIL SPRING CO., 325 BURNETT N., RENTON, WA 98057