



OVERHAUL MANUAL

TO: ALL HOLDERS OF PASSENGER SERVICE UNIT ASSEMBLY OVERHAUL MANUAL, 25-21-03

REVISION NO. 3 DATED NOV 10/82

HIGHLIGHTS

DESCRIPTION OF CHANGE	TOPICS AFFECTED												
	D & O	D/Assy	Cleaning	Insp/Chk	Repair	Assy	F/C	Test	T/Shooting	S/Tools	Storage	IPL	L/Overhaul
Added assemblies 65-79164-175, -176 with improved air duct assemblies												X	



OVERHAUL MANUAL

PASSENGER SERVICE UNIT ASSEMBLY

25-21-03

BOEING P/N 65-79164-13 thru -32, -35 thru -40, -45 thru -48, -53 thru -60,
-67 thru -78, -83 thru -106, -109 thru -118, -175, -176

AIRLINE P/N

THE FOLLOWING DIRECTIVES APPLY TO THIS SUBJECT:

BOEING SERVICE BULLETIN	BOEING TEMPORARY REVISION	OTHER DIRECTIVES	DATE DIRECTIVE INCORPORATED INTO TEXT
		PRR 23412	Nov 10/71
		PRR 23440	Nov 10/71
		PRR 32106	Nov 10/71
		MC 1975-10R	Nov 10/71
		MC 1975-7R	Nov 10/71
		MC 2033-4K	Nov 10/71
		MC 2033-5K	Nov 10/71
		MC 2033-6K	Nov 10/71
		MC 2033-7K	Nov 10/71
		MC 5034-10R	Nov 10/71
		MC 5034-6R	Nov 10/71
		MC 5078R	Nov 10/71
		PRR 23495	May 10/72
		PRR 32146	May 10/72
		PRR 17795	Sep 10/72
		PRR 23530	Sep 10/72
		PRR 23554	Sep 10/72
		PRR 32177	Sep 10/72
		PRR 32205	Sep 10/72
		MC 5034-20R	Sep 10/72
		MC 2033-28K	Jan 15/73

BOEING 
COMMERCIAL JET
OVERHAUL MANUAL

BOEING SERVICE BULLETIN	BOEING TEMPORARY REVISION	OTHER DIRECTIVES	DATE DIRECTIVE INCORPORATED INTO TEXT
		MC 5034-22R	Jan 15/73
		PRR 23556	Jan 15/73
		PRR 32207	Jan 15/73
SB 25-1088 (737)		MC 2033-17K	Apr 15/73
		MC 2033-21K	Apr 15/73
		MC 2033-98K	Apr 15/73
		MC 2033-100K	Apr 15/73
		MC 2033-103K	Apr 15/73
		MC 2033-105K	Apr 15/73
		PRR 17809	Apr 15/73
		PRR 23584	Apr 15/73
		PRR 32248	Apr 15/73
SB 3090 (707)			Oct 5/74
		PRR 17866	Jan 5/75
		PRR 23741	Jan 5/75
		PRR 32363	Jan 5/75
SB 25-250 (727)			Nov 10/79



OVERHAUL MANUAL

LIST OF EFFECTIVE PAGES					
* Indicates pages revised, added or deleted in latest revision					
F Indicates foldout pages - print one side only					
PAGE	DATE	PAGE	DATE	PAGE	DATE
25-21-03					
* T-1	Nov 10/82				
T-2	Nov 10/79				
* LEP-1	Nov 10/82				
LEP-2	BLANK				
T/C-1	Jun 25/73				
T/C-2	BLANK				
401	Dec 25/75				
402	Jun 25/73				
1101	May 10/75				
1102	May 10/75				
1103	May 10/75				
1104	May 10/75				
1105	Sep 10/72				
1106	Jun 25/73				
* 1107	Nov 10/82				
* 1108	Nov 10/82				
* 1109	Nov 10/82				
* 1110	Nov 10/82				
* 1110A	Nov 10/82				
* 1110B	Nov 10/82				
* 1110C	Nov 10/82				
* 1110D	Nov 10/82				
* 1110E	BLANK				
* 1110F	Nov 10/82				
1111	May 10/72				
1112	Apr 15/73				
1113	Apr 15/73				
1114	Jan 5/75				
1114A	BLANK				
1114B	Jan 5/75				
1115	Jan 5/75				
1116	Jan 5/75				
1117	Jan 5/75				
1118	Nov 10/79				
1119	May 10/75				
1120	May 10/75				
1121	Nov 10/79				
1122	Apr 15/73				
1123	Jan 5/75				
1124	Jan 5/75				
1125	Nov 10/79				
1126	BLANK				

BOEING 
COMMERCIAL JET
OVERHAUL MANUAL

TABLE OF CONTENTS

<u>Paragraph Title</u>	<u>Page</u>
Description and Operation	*
Disassembly	*
Cleaning.	*
Inspection/Check.	*
Repair.	401
Assembly.	*
Fits and Clearances	None
Testing	*
Trouble Shooting.	*
Storage Instructions.	*
Special Tools, Fixtures, and Equipment.	None
Illustrated Parts List.	1101

*This manual contains only refinish information and illustrated parts list.
 All other approved procedures for this unit are in 25-20-00, Passenger
 Service Unit Overhaul Procedures.

BOEING 
COMMERCIAL JET
OVERHAUL MANUAL

REPAIR

1. Refinish (Fig. 1101)

CAUTION: DO NOT USE HI-SPEED LACQUER TO REFINISH POLYCARBONATE PLASTIC PARTS. IT WILL CAUSE INSTANT DETERIORATION THAT MAY NOT BE VISUALLY DETECTABLE.

NOTE: Refer to 20-30-02 for stripping of protective finishes, and to 20-41-01 for explanation of F and SRF finish codes.

- A. Mounting ring (135, Fig. 1101) and brackets (160, 165, Fig. 1102) -- Alodize or chromic acid anodize (Ref 20-43-01) and apply one coat BMS 10-11, type 1 primer (SRF-2.30) all over. Material: Al alloy.
- B. Heat shield (275, Fig. 1101; 120, Fig. 1102) -- Apply two coats hi-speed semigloss lacquer, BAC711 white (SRF-14.904-711) all over. Material: Al alloy.
- C. Spring (295, Fig. 1102) -- Cadmium plate all over per 20-42-05, type 2, class 2. Material: Steel music wire.
- D. Channel (320, Fig. 1102) -- Alodize or chromic acid anodize (Ref 20-43-01) and apply one coat BMS 10-11, type 1 primer (SRF-2.30) to all exposed surfaces. Material: Al alloy.

2. Replacement

- A. Replace tape (330) if required. Trim tape on units having speaker assemblies (90) installed per Fig. 401.

(1) Paint speaker grille face after tape is applied, per applicable color code, to cover tape adhesive exposed through speaker grille holes.

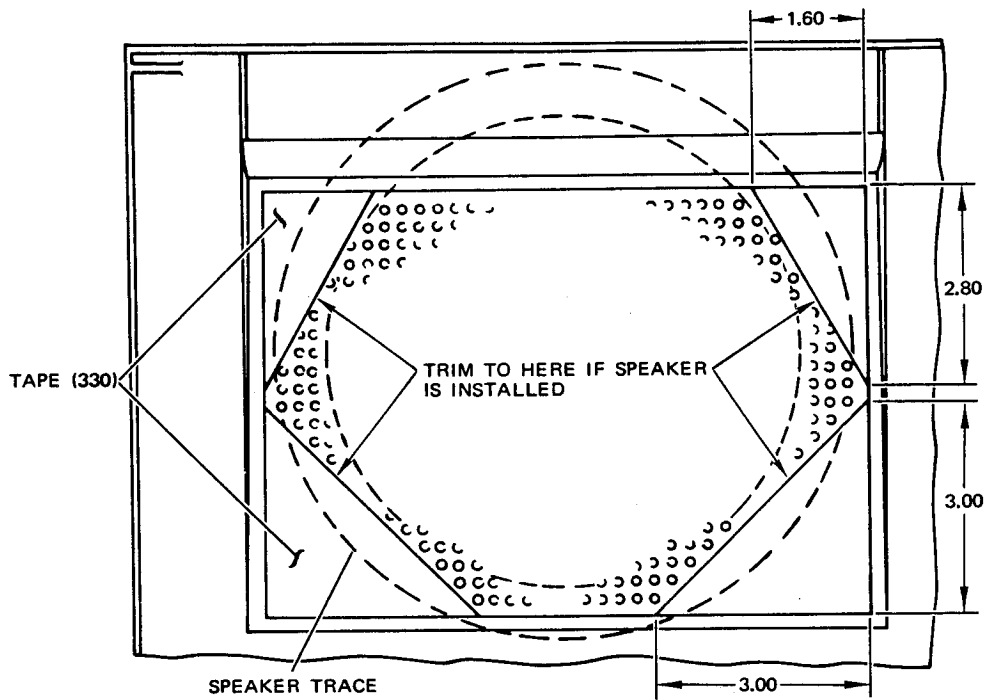
3. Materials

NOTE: Use listed material or equivalent substitute.

- A. 1-inch wide P32 vinyl tape (white) (1, Fig. 1101 and 1102); 3-inch wide P32 vinyl tape (white) (330, Fig. 401); Permacel Div., Johnson and Johnson, Inc., U.S. Highway 1, New Brunswick, New Jersey 08901
- B. Lacquer, special hi-speed semigloss (Ref 20-60-02)

BOEING
COMMERCIAL JET
OVERHAUL MANUAL

65-79164



ALL DIMENSIONS ARE IN INCHES

65-79164
DASH NUMBERS LIMITED

BOEING 
COMMERCIAL JET
OVERHAUL MANUAL

ILLUSTRATED PARTS LIST

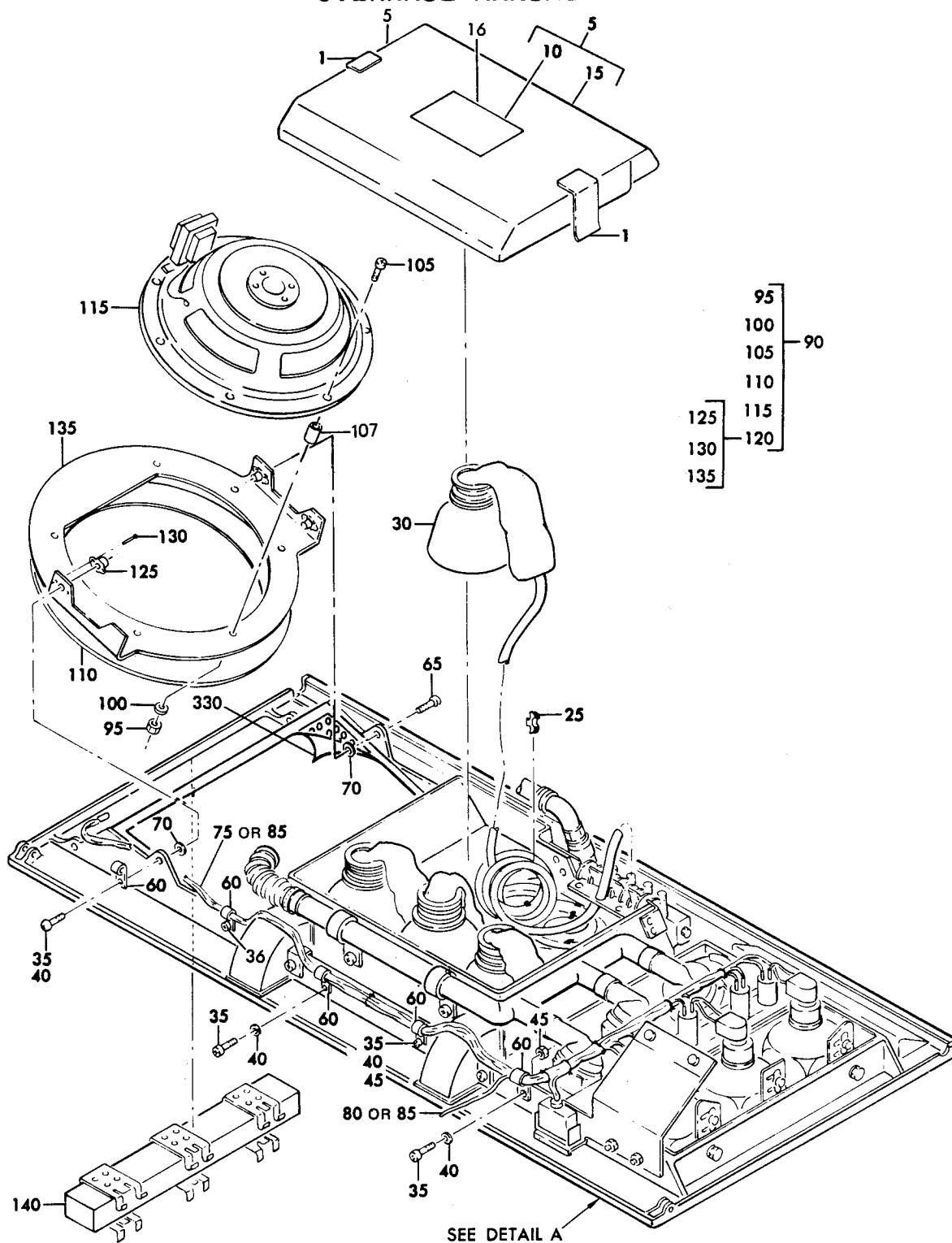
THIS PAGE
IS INTENTIONALLY
LEFT BLANK

May 10/75

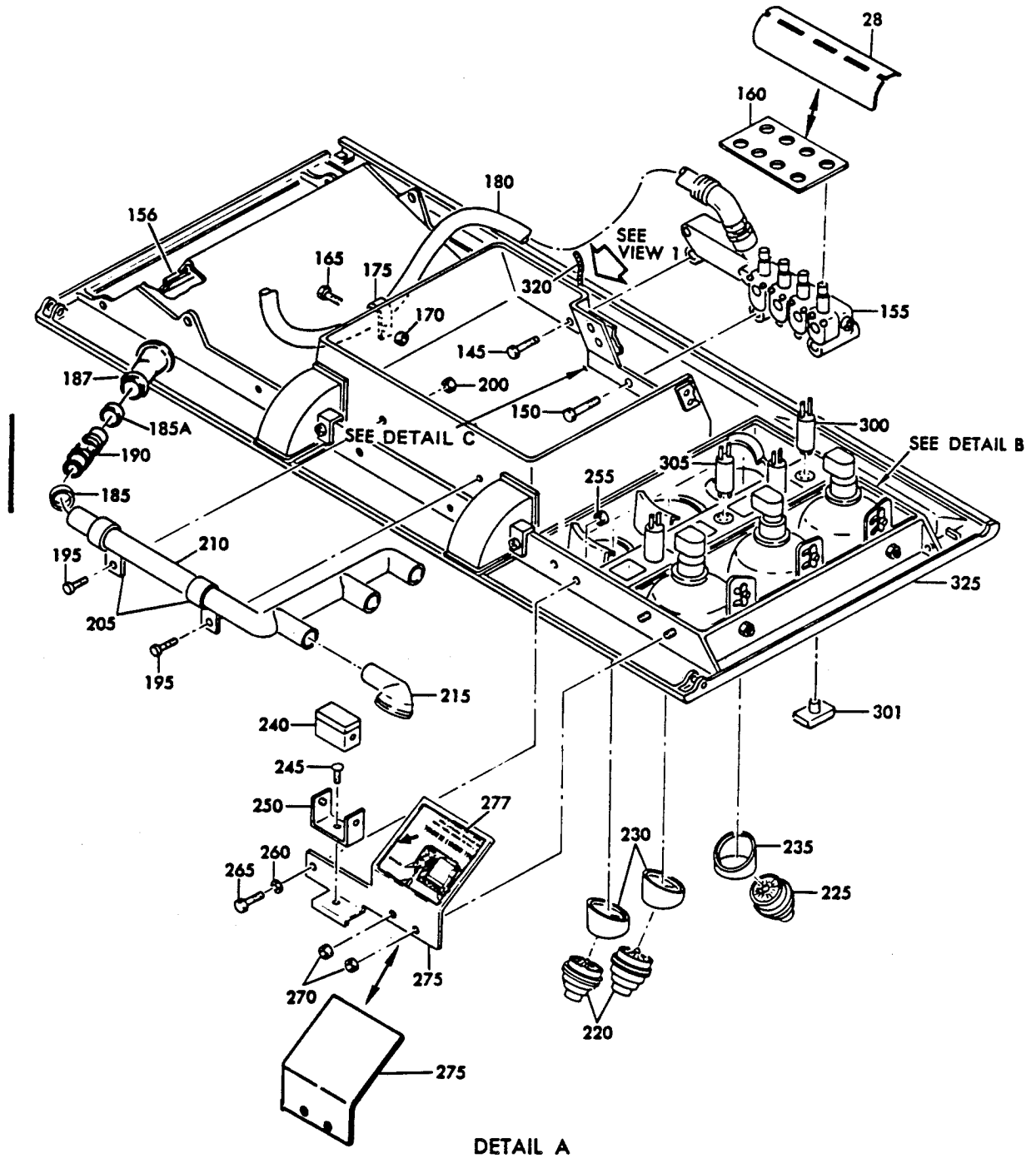
25-21-03
Page 1101

BOEING 
COMMERCIAL JET
OVERHAUL MANUAL

65-79164
 DASH NUMBERS LIMITED



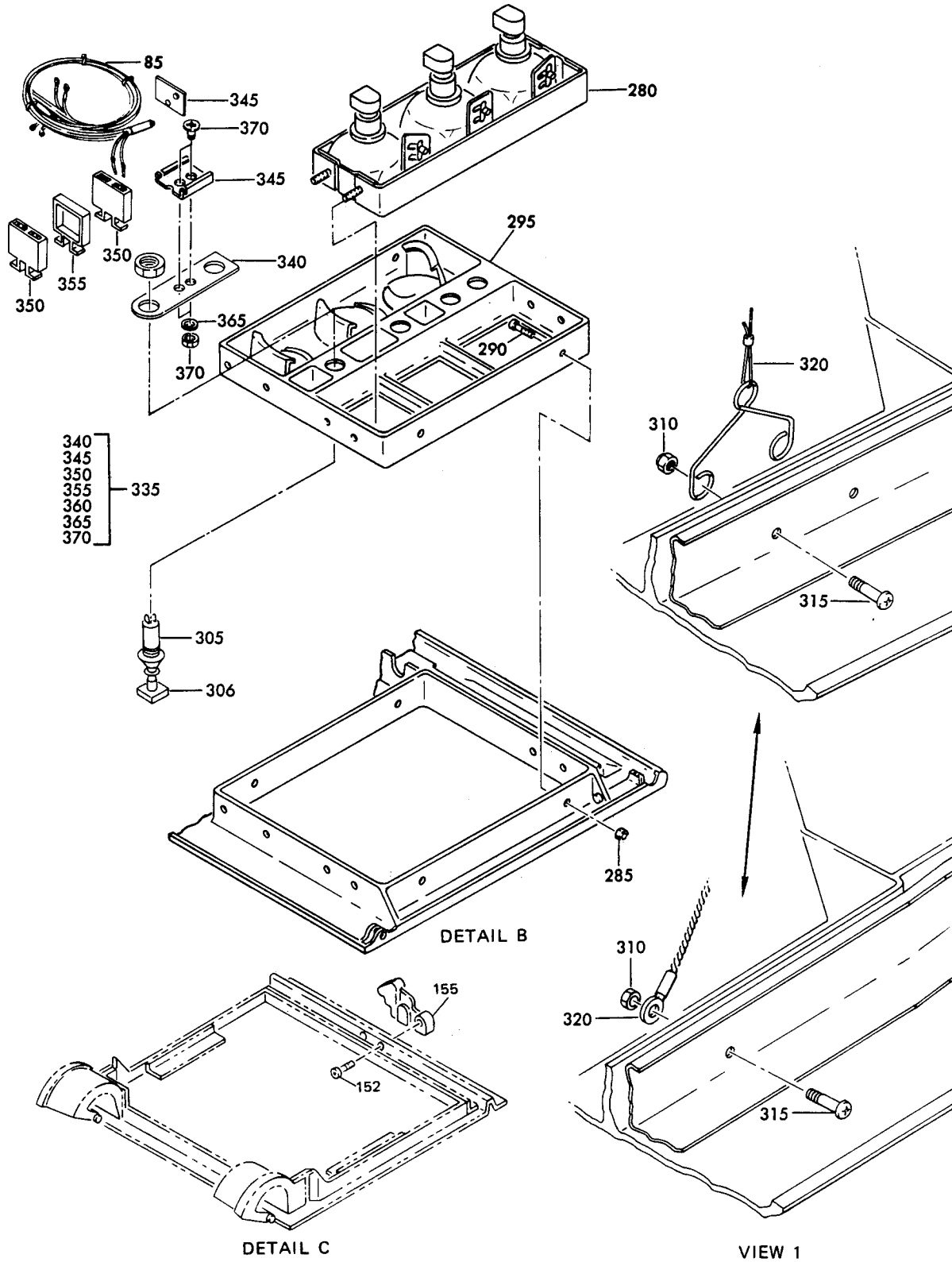
Passenger Service Unit Assembly
 Figure 1101 (Sheet 1)



Passenger Service Unit Assembly
Figure 1101 (Sheet 2)

BOEING 
COMMERCIAL JET
OVERHAUL MANUAL

65-79164
 DASH NUMBERS LIMITED



Passenger Service Unit Assembly
 Figure 1101 (Sheet 3)

65-79164

BOEING 
COMMERCIAL JET
OVERHAUL MANUAL

FIG. & ITEM NO.	PART NO.	AIRLINE PART NUMBER	N O M E N C L A T U R E							USE CODE	QTY PER ASSY		
			1	2	3	4	5	6	7				
1101	65-79164-13		PASSENGER	SERVICE	UNIT	ASSY					A	Ref	
	65-79164-14		PASSENGER	SERVICE	UNIT	ASSY					B	Ref	
	65-79164-15		PASSENGER	SERVICE	UNIT	ASSY					C	Ref	
	65-79164-16		PASSENGER	SERVICE	UNIT	ASSY					D	Ref	
	65-79164-17		PASSENGER	SERVICE	UNIT	ASSY					E	Ref	
	65-79164-18		PASSENGER	SERVICE	UNIT	ASSY					F	Ref	
	65-79164-19		PASSENGER	SERVICE	UNIT	ASSY					G	Ref	
	65-79164-20		PASSENGER	SERVICE	UNIT	ASSY					H	Ref	
	65-79164-21		PASSENGER	SERVICE	UNIT	ASSY					I	Ref	
	65-79164-22		PASSENGER	SERVICE	UNIT	ASSY					J	Ref	
	65-79164-23		PASSENGER	SERVICE	UNIT	ASSY					K	Ref	
	65-79164-24		PASSENGER	SERVICE	UNIT	ASSY					L	Ref	
	65-79164-25		PASSENGER	SERVICE	UNIT	ASSY					M	Ref	
	65-79164-26		PASSENGER	SERVICE	UNIT	ASSY					N	Ref	
	65-79164-27		PASSENGER	SERVICE	UNIT	ASSY					O	Ref	
	65-79164-28		PASSENGER	SERVICE	UNIT	ASSY					P	Ref	
	65-79164-29		PASSENGER	SERVICE	UNIT	ASSY					Q	Ref	
	65-79164-30		PASSENGER	SERVICE	UNIT	ASSY					R	Ref	
	65-79164-31		PASSENGER	SERVICE	UNIT	ASSY					S	Ref	
	65-79164-32		PASSENGER	SERVICE	UNIT	ASSY					T	Ref	
	65-79164-35		PASSENGER	SERVICE	UNIT	ASSY					U	Ref	
	65-79164-36		PASSENGER	SERVICE	UNIT	ASSY					V	Ref	
	65-79164-37		PASSENGER	SERVICE	UNIT	ASSY					W	Ref	
	65-79164-38		PASSENGER	SERVICE	UNIT	ASSY					X	Ref	
	65-79164-39		PASSENGER	SERVICE	UNIT	ASSY					Y	Ref	
	65-79164-40		PASSENGER	SERVICE	UNIT	ASSY					Z	Ref	
	65-79164-41			DELETED									
	65-79164-42			DELETED									
	65-79164-43			DELETED									
	65-79164-44			DELETED									
	65-79164-45			PASSENGER	SERVICE	UNIT	ASSY					EA	Ref
	65-79164-46			PASSENGER	SERVICE	UNIT	ASSY					FA	Ref
	65-79164-47			PASSENGER	SERVICE	UNIT	ASSY					GA	Ref
	65-79164-48			PASSENGER	SERVICE	UNIT	ASSY					HA	Ref
	65-79164-53			PASSENGER	SERVICE	UNIT	ASSY					IA	Ref
	65-79164-54			PASSENGER	SERVICE	UNIT	ASSY					JA	Ref
	65-79164-55			PASSENGER	SERVICE	UNIT	ASSY					KA	Ref
	65-79164-56			PASSENGER	SERVICE	UNIT	ASSY					LA	Ref
	65-79164-57			PASSENGER	SERVICE	UNIT	ASSY					MA	Ref
	65-79164-58			PASSENGER	SERVICE	UNIT	ASSY					NA	Ref

BOEING 
COMMERCIAL JET
OVERHAUL MANUAL

65-79164

FIG. & ITEM NO.	PART NO.	AIRLINE PART NUMBER	N O M E N C L A T U R E							USE CODE	QTY PER ASSY	
			1	2	3	4	5	6	7			
1101	65-79164-59		P	A	S	S	U	U	A	SS	OA	Ref
	65-79164-60		P	A	S	S	U	U	A	SS	PA	Ref
	65-79164-67		P	A	S	S	U	U	A	SS	QA	Ref
	65-79164-68		P	A	S	S	U	U	A	SS	RA	Ref
	65-79164-69		P	A	S	S	U	U	A	SS	SA	Ref
	65-79164-70		P	A	S	S	U	U	A	SS	TA	Ref
	65-79164-71		P	A	S	S	U	U	A	SS	UA	Ref
	65-79164-72		P	A	S	S	U	U	A	SS	VA	Ref
	65-79164-73		P	A	S	S	U	U	A	SS	WA	Ref
	65-79164-74		P	A	S	S	U	U	A	SS	XA	Ref
	65-79164-75		P	A	S	S	U	U	A	SS	YA	Ref
	65-79164-76		P	A	S	S	U	U	A	SS	ZA	Ref
	65-79164-77		P	A	S	S	U	U	A	SS	BB	Ref
	65-79164-78		P	A	S	S	U	U	A	SS	CB	Ref
	65-79164-83		P	A	S	S	U	U	A	SS	DB	Ref
	65-79164-84		P	A	S	S	U	U	A	SS	EB	Ref
	65-79164-85		P	A	S	S	U	U	A	SS	FB	Ref
	65-79164-86		P	A	S	S	U	U	A	SS	GB	Ref
	65-79164-87		P	A	S	S	U	U	A	SS	HB	Ref
	65-79164-88		P	A	S	S	U	U	A	SS	IB	Ref
	65-79164-89		P	A	S	S	U	U	A	SS	JB	Ref
	65-79164-90		P	A	S	S	U	U	A	SS	KB	Ref
	65-79164-91		P	A	S	S	U	U	A	SS	LB	Ref
	65-79164-92		P	A	S	S	U	U	A	SS	MB	Ref
	65-79164-93		P	A	S	S	U	U	A	SS	NB	Ref
	65-79164-94		P	A	S	S	U	U	A	SS	OB	Ref
	65-79164-95		P	A	S	S	U	U	A	SS	PB	Ref
	65-79164-96		P	A	S	S	U	U	A	SS	QB	Ref
	65-79164-97		P	A	S	S	U	U	A	SS	RB	Ref
	65-79164-98		P	A	S	S	U	U	A	SS	SB	Ref
	65-79164-99		P	A	S	S	U	U	A	SS	TB	Ref
	65-79164-100		P	A	S	S	U	U	A	SS	UB	Ref
	65-79164-101		P	A	S	S	U	U	A	SS	VB	Ref
	65-79164-102		P	A	S	S	U	U	A	SS	WB	Ref
	65-79164-103		P	A	S	S	U	U	A	SS	XB	Ref
	65-79164-104		P	A	S	S	U	U	A	SS	YB	Ref
	65-79164-105		P	A	S	S	U	U	A	SS	ZB	Ref
	65-79164-106		P	A	S	S	U	U	A	SS	CC	Ref
	65-79164-109		P	A	S	S	U	U	A	SS	DC	Ref
	65-79164-110		P	A	S	S	U	U	A	SS	EC	Ref
	65-79164-111		P	A	S	S	U	U	A	SS	FC	Ref

OVERHAUL MANUAL

FIG. & ITEM NO.	PART NO.	AIRLINE PART NUMBER	N O M E N C L A T U R E						USE CODE	QTY PER ASSY
			1	2	3	4	5	6		
1101	65-79164-112		PASSENGER	SERVICE	UNIT	ASSY			GC	Ref
	65-79164-113		PASSENGER	SERVICE	UNIT	ASSY			HC	Ref
	65-79164-114		PASSENGER	Service	UNIT	ASSY			IC	Ref
	65-79164-115		PASSENGER	SERVICE	UNIT	ASSY			JC	Ref
	65-79164-116		PASSENGER	SERVICE	UNIT	ASSY			KC	Ref
	65-79164-117		PASSENGER	SERVICE	UNIT	ASSY			LC	Ref
	65-79164-118		PASSENGER	SERVICE	UNIT	ASSY			MC	Ref
	65-79164-175		PASSENGER	SERVICE	UNIT	ASSY			NC	Ref
	65-79164-176		PASSENGER	SERVICE	UNIT	ASSY			OC	Ref
1	65-79164-3		. TAPE						A-DI-LU-Z	2
5	69-61469-1		. COVER ASSY, Oxygen box						EA-OC ACEGI	1
5	69-61469-2		. COVER ASSY, Oxygen box						KMO BDFHJ	1
5	69-61469-5		. COVER ASSY, Oxygen box						LNP QSUWY	1
5	65-80172-3		. COVER, Oxygen box						EA GA IA KA	1
5	69-61469-6		. COVER ASSY, Oxygen box						RTVXZ	1
5	65-80172-4		. COVER, Oxygen box						FA HA JA LA	1
5	65-80172-7		. COVER, Oxygen box						*[19]	1
5	65-80172-8		. COVER, Oxygen box (opposite 65-80172-8)						*[20]	1
10	BAC27DPA313		. . PLACARD						A-P	1
10	BAC27CPA126		. . PLACARD						Q-Z	1
15	65-80172-3		. . COVER (used on 69-61469-1 and 05)							1
15	65-80172-4		. . COVER (used on 69-61469-2 and -6)							1
16	BAC27DPA343		. PLACARD						EA-KB XB-CC	1
16	BAC27DPA344		. PLACARD (French)						*[1] FA-LA QA-CB	1
16	BAC27DPA465		. PLACARD						XB-CC DC-OC	1
20	MS3367-1-9		. DELETED						*[1]	1
20	MS3367-1-9		. DELETED							
25	63-10155		. RETAINER, Coil						A-H PB-SB	6
25	63-10155		. RETAINER, Coil						LB-OB	4

OVERHAUL MANUAL

FIG. & ITEM NO.	PART NO.	AIRLINE PART NUMBER	N O M E N C L A T U R E							USE CODE	QTY PER ASSY
			1	2	3	4	5	6	7		
1101 25	63-10155		. RETAINER, Coil							I-Z EA-KB TB-OC	8
28	69-64747-1		. GUIDE, Tube							MA-TA YA-OC	1
30	289-701-27		. MASK, Oxygen, V92114 (Boeing 10-60134-49)							LB-OB	2
30	279-701-27		. MASK, Oxygen, V92114 (Boeing 10-60137-49)							A-H	3
30	289-701-27		. MASK, Oxygen, V92114 (Boeing 10-60137-49)							I-Z EA-KB TB-OC	4
35	BACSL2CB08 ()		. SCREW								5
36	BACSL2CB08 ()		. DELETED								
36	NAS603-5P		. DELETED								
40	AN960D8		. WASHER								AR
45	BACN10JC08		. NUT								5
50	BACSL2CB06-12		. DELETED								
55	AN960D6		. DELETED								
60	BACC10		. CLAMP *[3]								5
65	NAS603-5P		. SCREW (replaces NAS603-5							*[7]	2
70	NAS549-8		. WASHER								AR
75	61-20878-1		. BUNDLE, Wire							A-P	1
80	61-20880-1		. BUNDLE, Wire							A-P	1
85	69-32891-1		. BUNDLE, Wire							Q-TW- Z	1
85	61-23100-1		. BUNDLE, Wire							UV EA-HA	1
85	61-23100-2		. BUNDLE, Wire							*[15]	1
85	61-23100-4		. BUNDLE, Wire							*[18]	1
85	61-23100-5		. BUNDLE, Wire							*[17]	1
85	61-23100-7		. BUNDLE, Wire *[16]							TB-WB	1
90	69-61466-4		. SPEAKER ASSY							*[7]	1
95	BACN10JC3		. . NUT								7
100	AN960C10L		. . WASHER								7
105	NAS514P1032-10		. . SCREW								7
107	NAS43DD3-16		. . SPACER								7
110	69-61466-3		. . TAPE, Sealing								AR
115	8-3282		. . SPEAKER, V26234 (pref)								1
115	C8TS-C8800		. . SPEAKER, V32001 (opt)								1
120	69-62320-1		. . MOUNT ASSY, Speaker								1
125	NAS1068A08		. . . NUTPLATE								4
130	MS20426D3-2		. . . RIVET								8

OVERHAUL MANUAL

FIG. & ITEM NO.	PART NO.	AIRLINE PART NUMBER	N O M E N C L A T U R E							USE CODE	QTY PER ASSY
			1	2	3	4	5	6	7		
1101											
135	69-62320-2										1
140	10-0040-101										1
140	10-0040-101								UA-XA	QA-TA	1
140	10-1040-1								YA-MC		1
140	10-1040-1								A-PA		1
140	10-0040-1										1
140	10-0040-1								UA-XA		1
145	NAS603-20P										1
150	NAS603-22P										2
152	BACSL2CB04-9										2
155	115013-01										1
155	115013-02										1
155	115013-03										1
155	115013-01										1
155	115013-02										1
155	115013-03										1
156	65-71061-151										1
156	66-25423-3										1
160	69-62463-1										1
165	NAS602-8P										1
170	BACN10FX83										1
175	BACC10DK7										1
180	ZH833-36										1
180	40830-505-036										1
180	ZH833-40										1
180	ZH833-39										1
180	ZH833-39										1
180	ZH833-39										1
185	6203										1
185	MS3367-4-9										1
185A	MS3367-4-0										1
185A	6203										1
187	69-64738-1										1
190	BE406-3										1
190	AD604-3										1
191	69-68932-1										1
191	69-68932-2										1

OVERHAUL MANUAL

FIG. & ITEM NO.	PART NO.	AIRLINE PART NUMBER	N O M E N C L A T U R E							USE CODE	QTY PER ASSY
			1	2	3	4	5	6	7		
1101											
195	NAS602-8P									*[8]	2
200	BACN10FX83									*[8]	2
205	BAC10DK12									*[8]	2
210	69-62660-2									*[8]	1
215	37869									*[8]	1
										A-D	3
										I-L	
										W-Z	
220	L16999-15C									*[9]	2
220	1947									UV-DC	
										EC	2
225	L20646-1C									*[9]	1
225	1947									UV	1
										DC EC	
230	65-79165-31									*[25]	2
235	65-79165-32									*[25]	1
240	TR1E4									*[2]	1
245	NAS601-eP									*[2]	1
250	T11AH									*[2]	2
255	BANC10JC06									*[2]	2
260	AN960PD6L									*[2]	2
265	NAS601-8P									*[2]	2
270	BACN10JC08									*[2]	4
275	69-61460-6									*[12]	1
275	69-61460-7									DC-OC	
										*[1]	1
277	BAC28DPA373									*[21]	1
277	BAC27DPA374									*[22]	1
277	BAC27DPA442									XB ZB	1
277	BAC27DPA443									YB CC	1
280	10-0429-1										
280	10-0429-2									*[6]	1
285	BACN10JC08									*[24]	1
										*[8]	4

OVERHAUL MANUAL

FIG. & ITEM NO.	PART NO.	AIRLINE PART NUMBER	N O M E N C L A T U R E							USE CODE	QTY PER ASSY
			1	2	3	4	5	6	7		
1101											
290	NAS514P832-5P		.	S	C	R	E	W		*[8]	4
295	65-79165-5		.	M	O	D	U	L	E	*[6]	1
295	65-79165-6		.	M	O	D	U	L	E	*[24]	1
300	690623-ALA		.	S	W	I	T	C	H	A-P	1
300	700827-13A1		.	S	W	I	T	C	H	Q-Z	1
										EA-HA	
300	691212-13A1-A		.	S	W	I	T	C	H	A-P	3
300	710906-13A1		.	S	W	I	T	C	H	IA-OC	1
300	720905-C1		.	L	E	N	S			DCEC	1
301	690623-A1-4		.	L	E	N	S			IA-CC	1
										FC-OC	1
301	720314-13A1-1		.	L	E	N	S			KA-LA	1
305	700827-13A2		.	S	W	I	T	C	H	Q-Z	3
										EA-HA	
305	710907-13A2		.	S	W	I	T	C	H	IA-OC	3
306	691212-13A1-1		.	L	E	N	S			IA-MC	3
310	BACN10JC08		.	N	U	T				C-DI-	1
										L	
310	BACN10JC08		.	N	U	T				E-HM-	2
										Z-EA-	
										EC	
315	NAS602-4P		.	S	C	R	E	W		A-D	1
										I-L	
315	NAS602-4P		.	S	C	R	E	W		E-H	2
										M-Z	
										EA-MC	
320	69-61465-3		.	L	A	N	Y	A	R	A-D	1
										I-L	
320	69-63824-1		.	L	A	N	Y	A	R	E-H	1
										M-Z	
										EA-OC	
320	69-63824-3		.	L	A	N	Y	A	R	E-H	1
										M-Z	
										EA-OC	
325	65-79164-1		.	B	A	S	I	C		EGMOQ	1
										S	
325	65-79164-2		.	B	A	S	I	C		FHNPR	1
										T	
325	65-79164-33		.	B	A	S	I	C		ACIKU	1
										WY EA	
										GA	
325	65-79164-34		.	B	A	S	I	C		BDJLV	1
										Z FA	
										H	

OVERHAUL MANUAL

FIG. & ITEM NO.	PART NO.	AIRLINE PART NUMBER	N O M E N C L A T U R E							USE CODE	QTY PER ASSY
			1	2	3	4	5	6	7		
1101 325	65-79164-49		. BASIC ASSY, PSU (Fig. 1102) (-49 is a basic LH shell and may be used for all LH units)							IA KA	1
325	65-79164-50		. BASIC ASSY, PSU (Fig. 1102) (-50 is a basic RH shell and may be used for all RH units)							JA LA MA OA	1 1
325	65-79164-61		. BASIC ASSY, PSU (Fig. 1102)							DB FB NA PA	1 1
325	65-79164-62		. BASIC ASSY, PSU (Fig. 1102)							EB GB	1
325	65-79164-63		. BASIC ASSY, PSU (Fig. 1102)							QA SA YA BB	1 1
325	65-79164-64		. BASIC ASSY, PSU (Fig. 1102)							HB JB RA TA	1 1
325	65-79164-65		. BASIC ASSY, PSU (Fig. 1102)							ZA CB IB KB	1 1
325	65-79164-66		. BASIC ASSY, PSU (Fig. 1102)							UA WA VA XA	1 1
325	65-79164-107		. BASIC ASSY, PSU (Opt)(Fig. 1102)							*[4]	1
325	65-79164-137		. BASIC ASSY, PSU (Pref)(Fig. 1102)							*[4]	1
325	65-79164-108		. BASIC ASSY, PSU (Opt)(Fig. 1102)							*[5]	1
330	65-79164-138		. BASIC ASSY, PSU (Pref)(Fig. 1102)							*[5]	1
330	69-64941-3		. TAPE (SB 25-1088)							MA-OC	1
335	69-65298-1		. TERMINAL BLOCK ASSY							DC-OC *[1]	1 1
340	69-65258-1		. . BASE								1
345	AMY0110T-8		. . BOTTOM and KEEPER, V09922 (2 pieces)								1
350	BACM15C1A		. . CONNECTOR								2
355	YHLZ1C-8		. . SPACER, V09922								1
360	BACN10JC-3		. . NUT								2
365	AN96OPD-10L		. . WASHER								2
370	NAS603-4p		. . SCREW								2

- *[1] Limited usage on LB-WB
- *[2] A-D I-L U-Z EA-KB XB-ZB and limited usage on LB-WB
- *[3] Size to fit. Under size 20 use BACC10DK-(). Over size 20 use BACC20BH-().
- *[4] LB NB PB RB TB VB XB ZB DC FC HC JC LC NC
- *[5] MB OB QB SB UB WB YB CC EC GC IC KC MC OC

OVERHAUL MANUAL

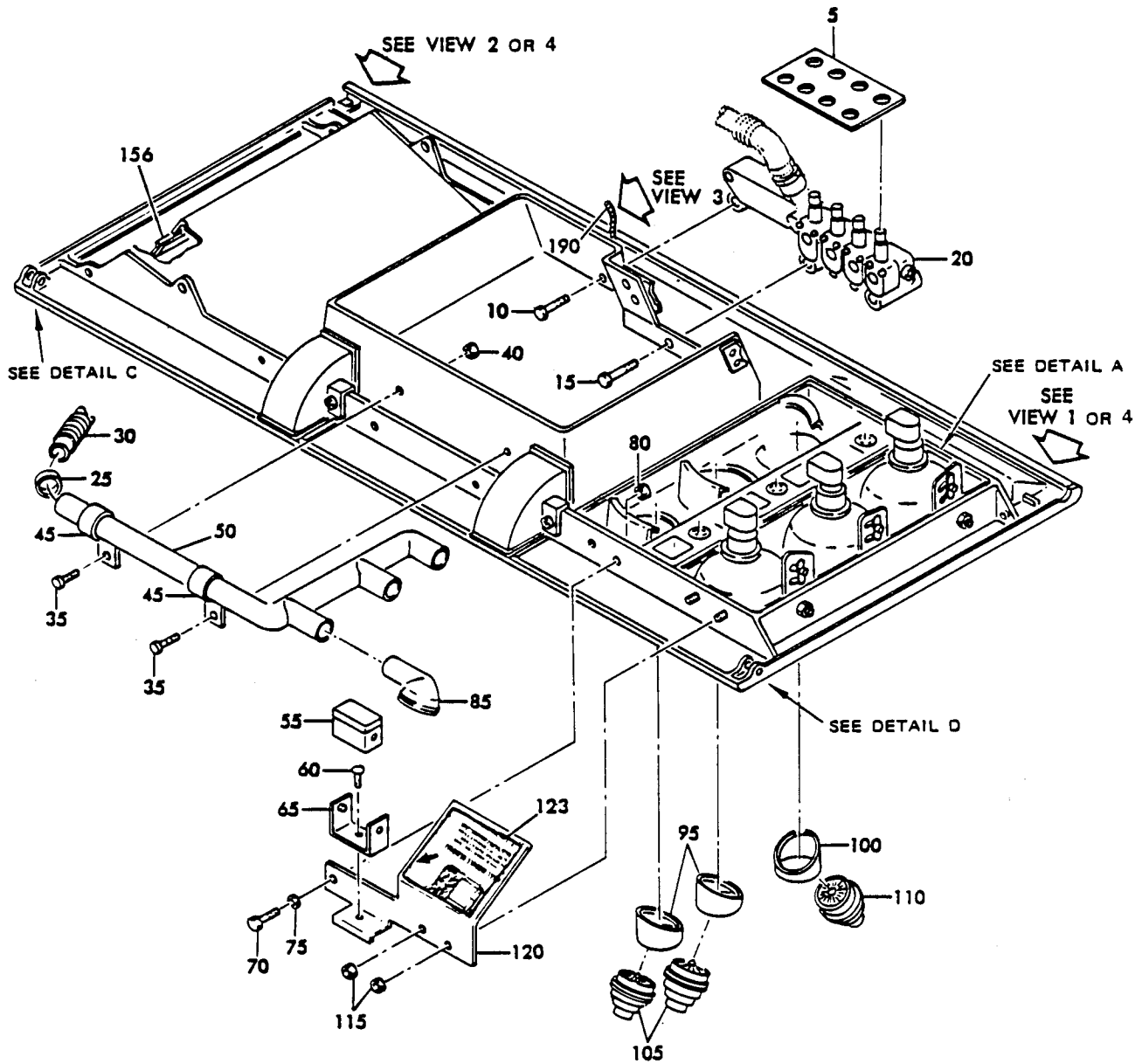
- *[6] Used on all odd numbered PSU's
- *[7] C D G H K L O P S T U V Y Z GA HA KA LA OA PA SA TA WA XA BB CB FB GE JB KB
NB OB RB SB VB WB ZB-EC HC IC LC MC
- *[8] A-D I-L U-Z EA-MC
- *[9] A-D I-L W-Z EA-CC FC-OC
- *[10] A C I K W Y EA GA IA KA MA OA QA SA UA WA YA BB DB FB HB JBV LB NB PB RB TB
VB XB ZB FC HC JC LC
- *[11] B D J L X Z FA HA JA LA NA PA RA TA VA XA ZA CB EB GB IB KB MB OB QB SB UB
WB YB CC GC IC KC MC
- *[12] A C I K U W Y EA GA IA KA MA OA QA SA UA WA YA BB DB FB HB JB LB NB PB RB
XB ZB DC FC HC and limited usage on LB NB PB RB TB VB
- *[13] B D J L V X Z FA HA JA LA NA PA RA TA VA XA ZA CB EB GB IB KB MB OB QB SB
YB CC EC GC IC and limited usage on MB OB QB SB UB WB
- *[14] May be supplied as part of 10-60141-18 or -19.
- *[15] LA-XA DB-KB XB-CC and limited usage on LB-SB
- *[16] Limited usage
- *[17] DC-MC and limited usage on LB-SB
- *[18] YA-CB and limited usage on TB-WB
- *[19] QA SA UA WA YA BB DB FB HB JB LB NB PB RB TB VB XB ZB DC FC HC JC LC NC
- *[20] RA TA VA XA ZA CB EB GB IB KB MB OB QB SB UB WB YB CC EC GC IC KC MC OC
- *[21] EA GA IA KA MA OA QA SA UA WA YA BB DB FB HB JB XB ZB and limited usage on
LB NB PB RB TB VB
- *[22] FA HA JA LA NA PA RA TA VA XA ZA CB EB GB IB KB YB CC and limited usage on
MB OB QB SB UB WB
- *[23] A-D I-L U-Z EA-LA and optional on UA-XA
- *[24] Used on all even numbered PSU's
- *[25] A-D I-L U-Z EA-OC

Reference Designation Index		
Reference Designation	Part Number	Item No.
D210	67-907	
D600P	BACC45FT14-15P	
D3100	67-907	
L122	10-0040-1	140
L142	10-0429-1, -2	280
L206	10-0040-1	140
L1049	10-0429-1	280
L1050	10-0429-2	280
L3000	10-0429-1	280
L3001	10-0429-2	280
L3002	10-0040-1	140
M3001	C8TS-C8800	115

OVERHAUL MANUAL

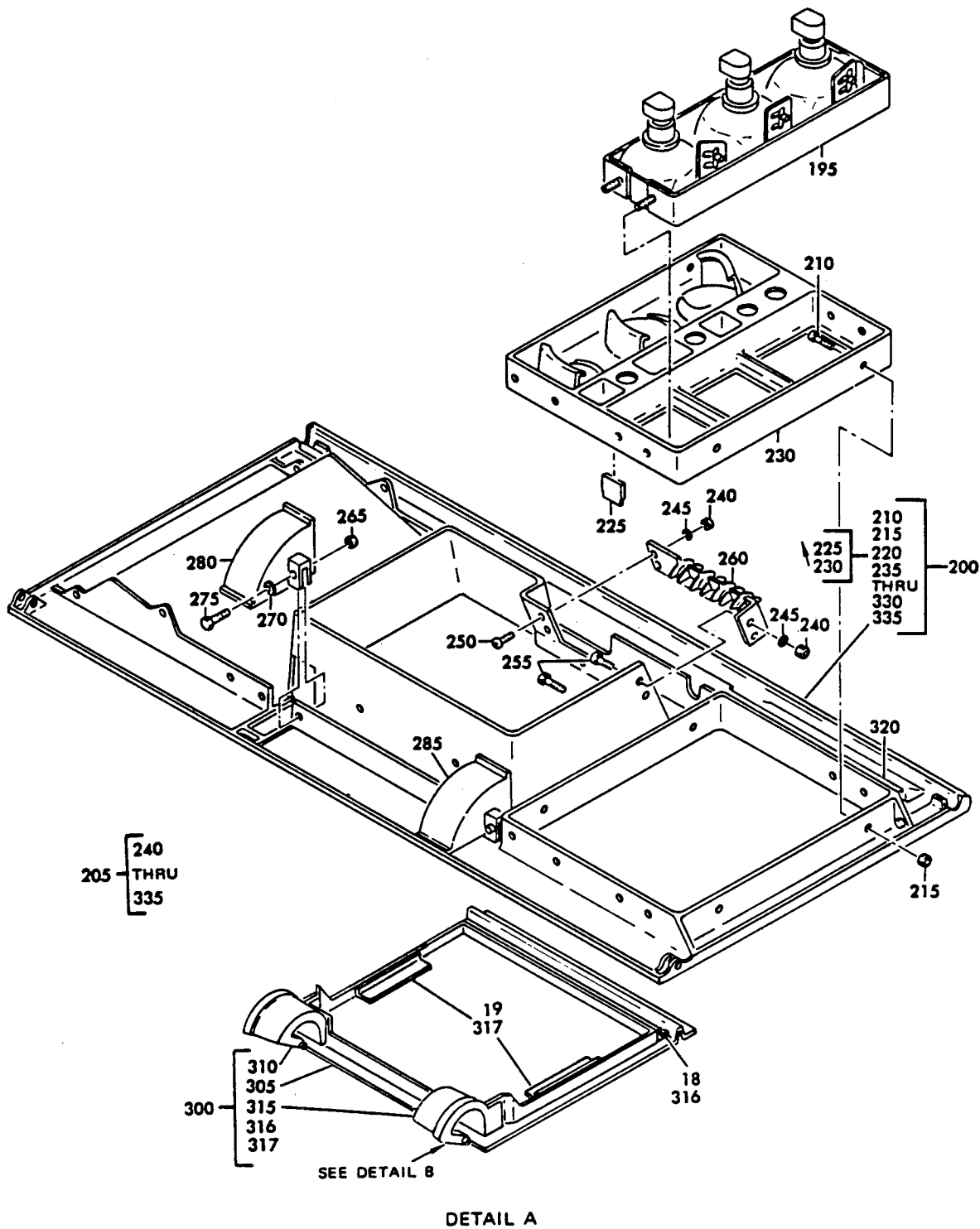
Reference Designation Index		
Reference Designation	Part Number	Item No.
S1	690623A1A	300
S1	700827-13A1	300
S29	700827-13A1	300
S269	700827-13A2	305
S365-S367	691212-13A1A	305
S365-S367	700827-13A2	305
S3000	700827-13A1	300
S3000	71906-13A1	300
S3001-S3003	691212-13A1A	305
S3001-S3003	700827-13A2	305
T264	TR1E4	240
T270	TR1E4	240
T3000	TR1E4	240
T3000	BCM15C1A	350

OVERHAUL MANUAL



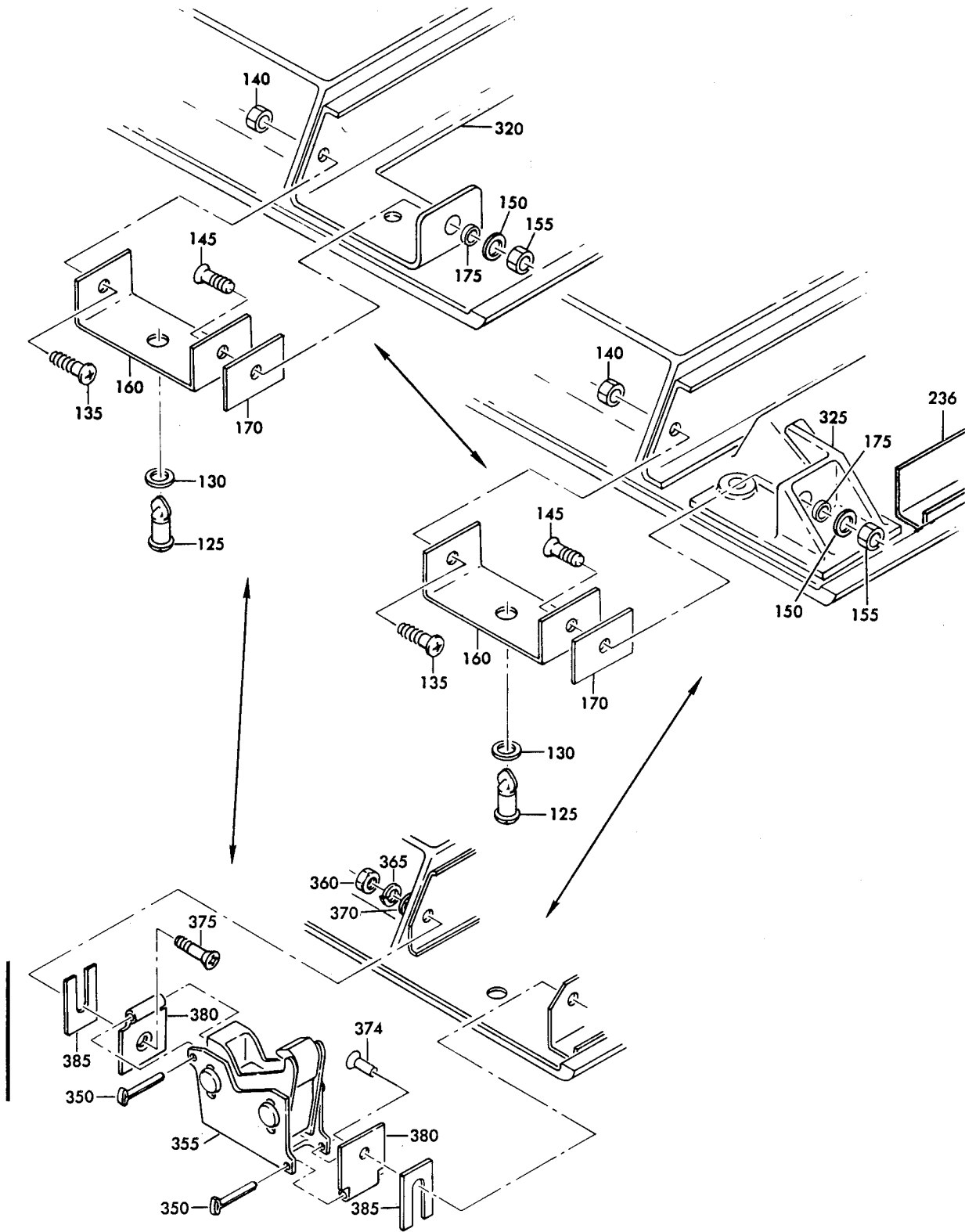
Passenger Service Unit Basic Assembly
Figure 1102 (Sheet 1)

BOEING 
COMMERCIAL JET
OVERHAUL MANUAL



BOEING
COMMERCIAL JET
OVERHAUL MANUAL

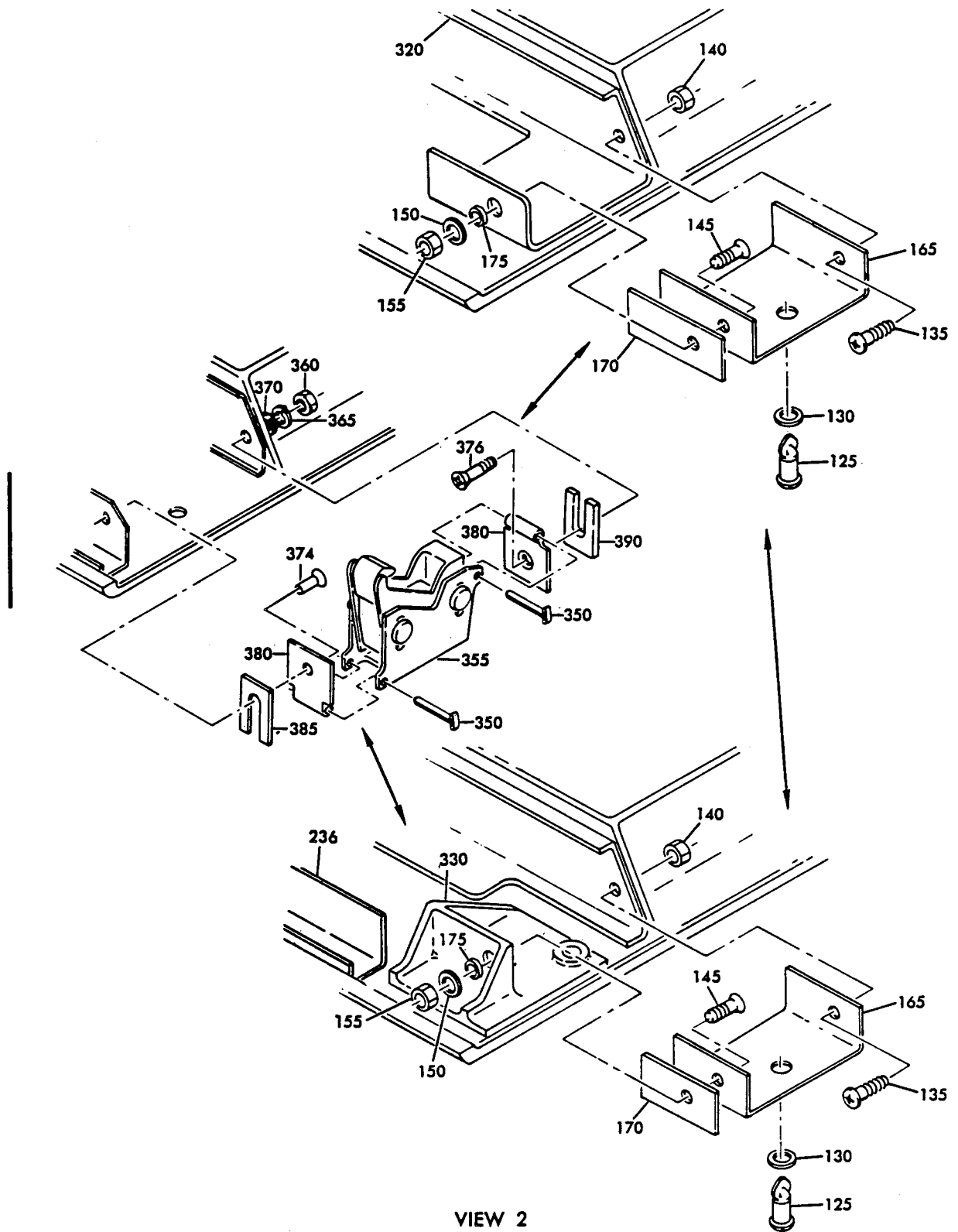
65-79164



VIEW 1

Passenger Service Unit Basic Assembly
Figure 1102 (Sheet 3)

BOEING
COMMERCIAL JET
OVERHAUL MANUAL

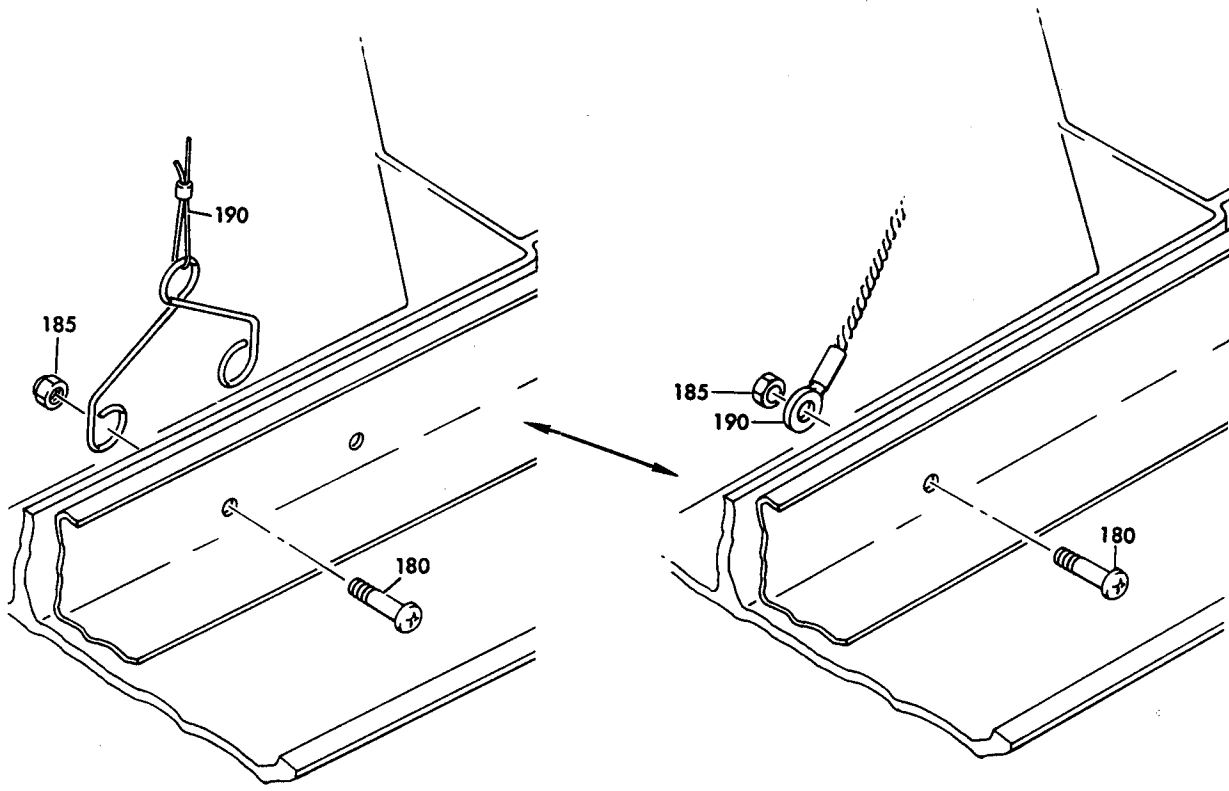


VIEW 2

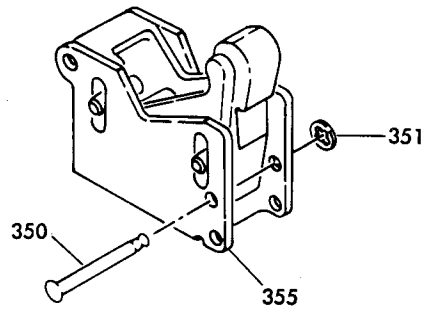
Passenger Service Unit Basic Assembly
Figure 1102 (Sheet 4)

Apr 15/73

25-21-03
Page 1113



VIEW 3

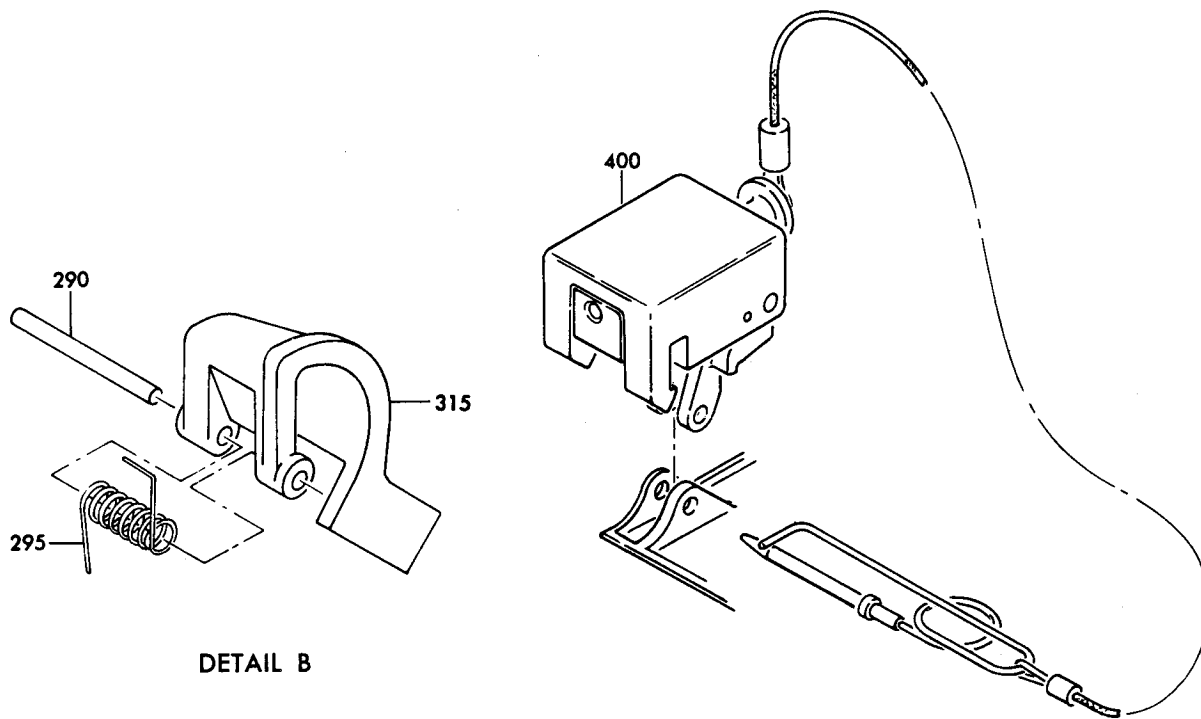


VIEW 4

Passenger Service Unit Basic Assembly
Figure 1102 (Sheet 5)

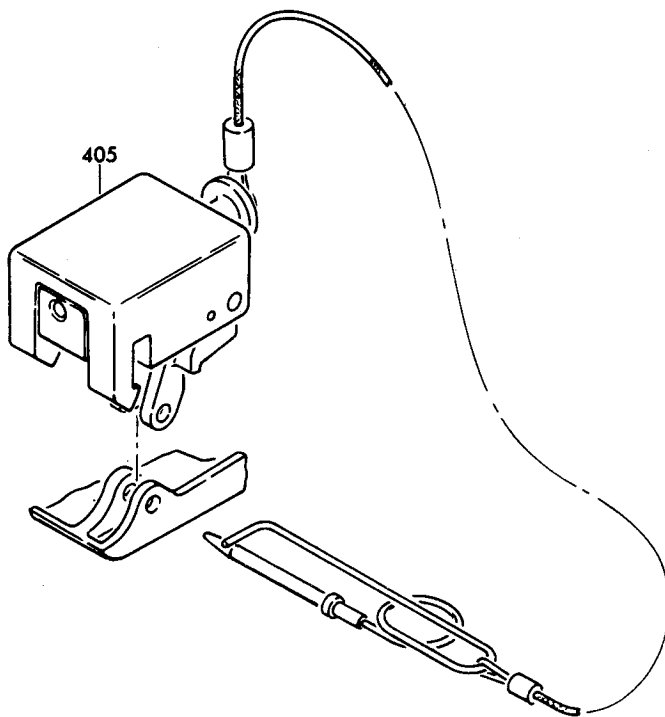
BOEING 
COMMERCIAL JET
OVERHAUL MANUAL

65-79164



DETAIL B

DETAIL C



DETAIL D

Passenger Service Unit Basic Assembly
Figure 1102 (Sheet 6)

Jan 5/75

BOEING 
COMMERCIAL JET
OVERHAUL MANUAL

FIG. & ITEM NO.	PART NO.	AIRLINE PART NUMBER	N O M E N C L A T U R E							USE CODE	QTY PER ASSY	
			1	2	3	4	5	6	7			
1102	65-79164-1		PASSENGER	SERVICE	UNIT	BASIC	ASSY				A	REF
	65-79164-2		PASSENGER	SERVICE	UNIT	BASIC	ASSY				B	REF
	65-79164-33		PASSENGER	SERVICE	UNIT	BASIC	ASSY				C	REF
	65-79164-34		PASSENGER	SERVICE	UNIT	BASIC	ASSY				D	REF
	65-79164-49		PASSENGER	SERVICE	UNIT	BASIC	ASSY				E	REF
	65-79164-50		PASSENGER	SERVICE	UNIT	BASIC	ASSY				F	REF
	65-79164-63		PASSENGER	SERVICE	UNIT	BASIC	ASSY				G	REF
	65-79164-64		PASSENGER	SERVICE	UNIT	BASIC	ASSY				H	REF
	65-79164-65		PASSENGER	SERVICE	UNIT	BASIC	ASSY				I	REF
	65-79164-66		PASSENGER	SERVICE	UNIT	BASIC	ASSY				J	REF
	65-79164-61		PASSENGER	SERVICE	UNIT	BASIC	ASSY				K	REF
			(SB 3090)									
	65-79164-62		PASSENGER	SERVICE	UNIT	BASIC	ASSY				L	REF
			(SB 3090)									
	65-79164-107		PASSENGER	SERVICE	UNIT	BASIC	ASSY				M	REF
			(SB 3090)									
	65-79164-108		PASSENGER	SERVICE	UNIT	BASIC	ASSY				N	REF
			(SB 3090)									
	65-79164-137		PASSENGER	SERVICE	UNIT	BASIC	ASSY				O	REF
	65-79164-138		PASSENGER	SERVICE	UNIT	BASIC	ASSY				P	REF
1	65-79164-3		. TAPE *[1]								AB	2
5	69-62463-1		. GUIDE, TUBE								AB	1
10	NAS603-20P		. SCREW								AB	1
15	NAS603-22P		. SCREW								AB	2
18	66-25423-1		. STIFFENER, ANGLE								A-D	1
19	66-25423-2		. STIFFENER, ANGLE								A-D	2
20	115013-01		. MANIFOLD ASSY, LATCH VALVE, V16827 (BOEING 10-60513-7)								A	1
20	115013-02		. MANIFOLD ASSY, LATCH VALVE, V16827 (BOEING 10-60513-8)								B	1
25	6203		. CLAMP, V81646								AB	1
30	HE406-3		. DUCT, AIR, V05399 (PREF)								AB	1
30	AD604-3		. DUCT, AIR, V21868 (OPT)								AB	1
35	NAS602-8P		. SCREW								AB	2
40	BACN10FX83		. NUT, CLIP-ON								AB	2
45	BACC10DK12		. CLAMP								AB	2
50	69-62660-2		. MANIFOLD								AB	1
55	TR1E4		. MODULE, TERMINAL, V49367								AB	1
60	NAS601-3P		. SCREW								AB	1
65	T11AH		. RACK, TERMINAL, V49367								AB	1
70	NAS601-8P		. SCREW								AB	2
75	AN96OPD6L		. WASHER								AB	2
80	BACN10JCO6		. NUT								AB	2

BOEING 
COMMERCIAL JET
OVERHAUL MANUAL

65-79164

FIG. & ITEM NO.	PART NO.	AIRLINE PART NUMBER	N O M E N C L A T U R E							USE CODE	QTY PER ASSY
			1	2	3	4	5	6	7		
1102											
85	37869									AB	3
95	65-79165-9									AB	2
100	65-79165-10									AB	1
105	L16999-15C									AB	2
110	L20646-1C									AB	1
115	BACN1QJCO8									AB	2
120	69-61460-6									A	1
120	69-61460-7									B	1
123	BAC27DPA343										
123	BAC27DPA344										
125	82-19-180-16									AD	2
125	82-19-200-16									E-J	2
125	AN525-10R7									C-H	2
130	82-46-101-39									E-J	2
135	NAS602-5P										2
140	BACN1QJCO8										2
145	NAS514-P832-7										2
150	MS35649-282										2
155	MS35338-42										2
156	65-71061-151									A-F	1
156	66-25423-3									A-F	1
160	69-61468-7									ACE	1
160	69-61468-8									BDF-J	1
165	69-61468-5									ACEGI	1
165	69-61468-6									BDFHJ	1
170	BACS4OR06D06F									C-F	2
175	NAS43DD3-8									C-F	2
180	NAS602-4P									AB	1
180	NAS602-4P									AB	2
185	BACN1QJCO8									AB	1
185	BACN1QJCO8									AB	2
190	69-61465-3									AB	1
190	69-63824-1									AB	1
195	10-0429-1									A	1
195	10-0429-2									B	1
200	65-79165-1									A	1
200	65-79165-2									B	1
205	65-79165-27									CE	1
205	65-79165-28									DF	1
205	65-79165-37									G	1
205	65-79165-38									H	1

BOEING 
COMMERCIAL JET
OVERHAUL MANUAL

FIG. & ITEM NO.	PART NO.	AIRLINE PART NUMBER	N O M E N C L A T U R E							USE CODE	QTY PER ASSY
			1	2	3	4	5	6	7		
1102											
205	65-79165-55		I	1
205	65-79165-56		J	1
205	65-79165-57		K	1
205	65-79165-58		L	1
205	65-79165-59		M	1
205	65-79165-60		N	1
205	65-79165-61		O	1
205	65-79165-62		P	1
210	NAS514P832-5P		AB	4
215	BACN1QJC08		AB	4
220	65-79165-5		A	1
220	65-79165-6		B	1
225	65-79165-23			1
230	65-79165-7		A	1
230	65-79165-8		B	1
235	65-79165-3		A	1
235	65-79165-4		B	1
235	65-79165-63		O	1
235	65-79165-64		P	1
235	*[2]		CE	1
235	*[3]		DF	1
235	*[6]		G	1
235	*[7]		H	1
235	*[8]		I	1
235	*[9]		J	1
235	*[10]		KM	1
235	*[11]		LN	1
236	69-64358-1		A-F	1
236	69-64358-5		K-N	1
236	69-64358-9		HG	1
240	BACN1QJC06		A-N	4
245	NAS620-6L		A-N	4
250	NAS514P632-6		A-N	2
250	BACR15DA4H		OP	2
255	NAS601-6P		A-N	2
255	NAS601-6B		A-N	2
255	BACR15DA4CH		OP	2
260	65-79165-21		ACEGK	1
			MO	
260	65-79165-22		BDFHL	1
			NP	
265	BACN1QJC06		A-FLJ	4
265	BACN1QJC08		GHK-P	4

BOEING 
COMMERCIAL JET
OVERHAUL MANUAL

65-79164

FIG. & ITEM NO.	PART NO.	AIRLINE PART NUMBER	N O M E N C L A T U R E							USE CODE	QTY PER ASSY
			1	2	3	4	5	6	7		
1102											
270	NAS620-6L		W	A	-FIJ	4	
270	NAS620-8L		W	G	HK-P	4	
275	NAS601-9P		S	A	-FIJ	4	
275	NAS623-2-5		S	G	HK-P	4	
280	65-79165-19		C	A	-FIJ	1	
285	65-79165-20		C	A	-FIJ	1	
285	65-79165-52		C	G	HK-P	1	
290	MS20253-3-124		P			2	
295	69-61458-1		S			2	
300	65-79165-13		D	A	CE	1	
300	65-79165-14		D	B	D	1	
300	65-79164-51		D	E		1	
300	65-79164-52		D	F		1	
300	65-79165-41		D	G	K	1	
300	65-79165-42		D	H	L	1	
305	65-79165-43		D	G	K	1	
305	65-79165-44		D	H	L	1	
305	65-79165-15		D	A	C	1	
305	65-79165-16		D	B	D	1	
310	65-79165-17		H	A	C	1	
310	65-79165-18		H	B	D	1	
315	65-79165-18		H	A	C	1	
315	65-79165-17		H	B	D	1	
315	65-79165-53		H	G	H	1	
315	65-79165-54		H	G	H	1	
316	66-25423-1		S	E	-F	1	
317	66-25423-4		S	E	-F	2	
320	69--61459-1		C	A		1	
320	69-61459-2		C	B		1	
320	69-61459-3		C	C		1	
320	69-61459-4		C	D		1	
320	69-61459-5		C	G	K	1	
320	69-61459-6		C	H	L	1	
320	69-61459-7						
320	69-51459-8						
325	65-79165-33		F	C	E	1	
325	65-79165-34		F	D	F	1	
330	65-79165-35		F	C	E	1	
330	65-79165-36		F	D	F	1	
335	65-79165-11		B	A	C	1	

BOEING 
COMMERCIAL JET
OVERHAUL MANUAL

FIG. & ITEM NO.	PART NO.	AIRLINE PART NUMBER	N O M E N C L A T U R E							USE CODE	QTY PER ASSY
			1	2	3	4	5	6	7		
1102											
335	65-79165-12		.	.	.					BD	1
335	65-79165-39		.	.	.					GKM	1
335	65-79165-40		.	.	.					HLN	1
350	66-25728-1		.							K-N	4
350	MS24665-283		.							K-N	4
350	BACR15BB3D10		.							OP	2
351	6100-9		.							OP	2
355	65-85901-2		.							MN	2
355	65-85901-1		.							KL	2
355	65-85901-3		.							OP	2
360	MS35649-282		.							K-N	4
365	MS35338-42		.							K-N	4
370	AN960PD-8		.							K-N	2
374	BACR15BA-AD		.							K-N	2
375	BACB3OLU2-2		.							K-N	1
376	BACB3OLU2-4		.							K-N	1
380	69-64895-1		.							K-N	4
385	66-25727-1		.							K-N	3
385	BACS4ORD5C6F		.							K-N	3
390	66-25727-2		.							K-N	1
390	BACS4ORD5E06F		.							K-N	1
400	65-85900-1		.							K-P	1
405	65-85900-2		.							K-P	1

- *[1] 0.75- TO 1.00-INCH WIDE P32 VINYL TAPE (WHITE), PERMACEL, NEW BRUNSWICK, NEW JERSEY
- *[2] NO BOEING PART NUMBER. IDENTICAL TO 65-79165-27.
- *[3] NO BOEING PART NUMBER. IDENTICAL TO 65-79165-28.
- *[4] LIMITED USE.
- *[5] 65-79164-51, -52 ARE COMPLETE DOOR ASSEMBLIES CONSISTING OF 65-79165-13 OR -14 RESPECTIVELY AND STIFFENER BRACKETS 66-25423-1 AND -4 READY TO INSTALL AS A SPARE DOOR ASSEMBLY ON ANY PSU ASSEMBLY.
- *[6] NO BOEING PART NUMBER. IDENTICAL TO 65-79165-37
- *[7] NO BOEING PART NUMBER. IDENTICAL TO 65-79165-38
- *[8] NO BOEING PART NUMBER. IDENTICAL TO 65-79165-55
- *[9] NO BOEING PART NUMBER. IDENTICAL TO 65-79165-56
- *[10] NO BOEING PART NUMBER. IDENTICAL TO 65-79165-57 AND -59
- *[11] NO BOEING PART NUMBER. IDENTICAL TO 65-79165-58 AND -60

BOEING 
COMMERCIAL JET
OVERHAUL MANUAL

65-79164
DASH NUMBERS LIMITED

VENDORS

V02217 PURITAN-ZEP, DIV., PURITAN EQUIPMENT INC., 111 PENN ST., EL SEGUNDO,
CA 90245

V05399 BEMCO INC., P.O. BOX 68, CENTERTON, AR 72719

V09922 BURNDY CORP., RICHARDS AVE., NORWALK, CT 06852

V16827 PURITAN EQUIPMENT INC., 10800 PFLUMM RD., LENEXA, KS 66211

V17744 LUMINATOR DIV., GULTON INDUSTRIES INC., 1200 E. DALLAS N. PARKWAY,
PLANO, TX 75074

V21868 H.K. PORTER CO., THERMOID DIV., GOVERNMENT SALES OFFICE, 601 GRANT
ST., 1627 PORTER BLDG., PITTSBURGH, PA 15219

V26234 CTS OF PADUCAH INC., 1565 N. 8TH ST., PADUCAH, KY 42001

V31441 AMERICAN SAFETY FLIGHT SYSTEMS INC., ROCKET JET/ARD DIV., 1311 GRAND
CENTRAL AVE., GLENDALE, CA 91201

V32001 THE MUTER CO., JENSEN MFG. DIV., 5655 W. 73RD ST., CHICAGO, IL 60638

V49367 PYLE-NATIONAL CO., 1334 N. KOSTNER AVE., CHICAGO, IL 60651

V72914 GRIMES MFG. CO., 515 N. RUSSELL ST., URBANA, OH 43078

V81646 IDEAL CORP., P.O. BOX 8827, CHURCH ST. STATION, NEW YORK, NY 10049

V83564 WEMAC AIRCRAFT AND PRECISION PRODUCTS INC., 3433 WEST HARVARD ST.,
SANTA ANA, CA 92704

V92114 SIERRA ENGINEERING CO., 123 E. MONTECITO AVE., SIERRA MADRE, CA
91024

V94222 SOUTHCO INC., 3RD ST. AND GOVERNOR PRINTZ BLVD., LESTER, PA 19113

V97564 CLARE-PENDAR, INC., P.O. BOX 785, POST FALLS, ID 83854

BOEING
COMMERCIAL JET
OVERHAUL MANUAL

Part No.	Fig. and Index No.	Qty. per Assy.	Part No.	Fig. and Index No.	Qty. per Assy.
AD604-3	1101-190	1	BACR15BA-AD		AR
AD604-3	1102-30	1	BAC27CPA126	1101-10	1
AMY0110T-8	1101-345	1	BAC27DPA313	1101-10	1
AN525-10R7	1102-125	AR	BAC27DPA343	1101-16	1
AN960C10L		AR	BAC27DPA344	1101-16	1
AN960D6		AR	BAC27DPA373	1101-277	1
AN960D8		AR	BAC27DPA373	1102-123	1
AN960PD-10L		AR	BAC27DPA374	1101-277	1
AN960PD6L		AR	BAC27DPA374	1102-123	1
AN960PD8		AR	BAC27DPA442	1101-277	1
			BAC27DPA443	1101-277	1
BACB30LU2-2	1102-375	3	BAC27DPA465	1101-16	1
BACB30LU2-4	1102-376	1	BE406-3	1101-190	1
BACC10	1101-60	5	BE406-3	1102-30	1
BACC10DK12	1101-205	2			
BACC10DK12	1101-175	2	C8TS-C8800	1101-115	1
BACC10DK7	1101-175	1			
BACM15C1A	1101-350	2	L16999-15C	1101-220	2
BACN10FX83	1101-170	1	L16999-15C	1102-105	2
BACN10FX83	1101-200	2	L20646-1C	1101-225	1
BACN10FX83	1102-40	2	L20646-1C	1102-110	1
BACN10JC06	1101-255	2			
BACN10JC06	1102-80	2	MS17821-1-9		AR
BACN10JC06	1102-240	4	MS20426D3-2		AR
BACN10JC06	1101-265	4	MS20253-3-124		AR
BACN10JC08	1101-45	3	MS24665-283		AR
BACN10JC08	1101-270	4	MS3367-4-9		AR
BACN10JC08	1101-285	4	MS35338-32		AR
BACN10JC08	1101-310	2	MS35649-282		AR
BACN10JC08	1102-115	2			
BACN10JC08	1102-140	2	NAS1068A08		AR
BACN10JC08	1102-185	2	NAS43DD3-16		AR
BACN10JC08	1102-215	4	NAS43DD3-8		AR
BACN10JC3	1101-95	7	NAS514P1032-8		AR
BACN10JC-3	1101-360	1	NAS514P1032-8		AR
BACR15BB3D10	1102-350	2	NAS514P832-5P		AR
BACR15DA4CH	1102-250	2	NAS514P832-7		AR
BACR15DA4H	1102-250	2	NAS549-8		AR
BACS12CB04-9	1101-152	2	NAS601-3P		AR
BACS12CB06-12	1101-50	1	NAS601-6B		AR
BACS12CB08()	1101-35	2	NAS601-6P		AR
BACS12CB08()	1101-35	5	NAS601-8P		AR
BACS12CB08()	1101-36	1	NAS601-9P		AR
BACS40R05C06F	1102-385	3	NAS602-4P		AR
BACS40R05E06F	1102-390	1	NAS602-5P		AR
BACS40R06D06F	1102-170	2	NAS602-8P		AR

BOEING 
COMMERCIAL JET
OVERHAUL MANUAL

65-79164

Part No.	Fig. and Index No.	Qty. per Assy.
NAS603-20P		AR
NAS603-22P		AR
NAS603-4P		AR
NAS603-5P		AR
NAS620-6L		AR
TR1E4	1101-240	1
TR1E4	1102-55	1
T11AH	1101-250	1
T11AH	1102-65	1
YHLZ1C-8	1101-355	1
ZH833-36	1101-180	1
ZH833-39	1101-180	1
ZH833-40	1101-180	1
10-0040-1	1101-140	1
10-0040-101	1101-140	1
10-0429-1	1101-280	1
10-0429-1	1102-195	1
10-0429-2	1101-280	1
10-0429-2	1102-195	1
10-60137-49	1101-30	3
10-60137-49	1101-30	4
10-60141-18	1101-220	2
10-60141-18	1102-105	2
10-60141-19	1101-225	1
10-60141-19	1102-110	1
10-60141-20	1101-220	2
10-60141-20	1101-225	1
10-60174-36	1101-180	1
10-60174-39	1101-180	1
10-60174-40	1101-180	1
10-60513-10	1101-155	1
10-60513-7	1101-155	1
10-60513-7	1102-20	1
10-60513-8	1101-155	1
10-60513-8	1102-20	1
10-60513-9	1101-155	1
10-60781-1	1101-140	1
10-60781-101	1101-140	1

Part No.	Fig. and Index No.	Qty. per Assy.
10-61779-1	1101-280	1
10-61779-1	1102-195	1
10-61779-2	1101-280	1
10-61779-2	1102-195	1
115013-01	1101-155	1
115013-01	1102-20	1
115013-02	1101-155	1
115013-02	1102-20	1
115013-03	1101-155	1
115013-04	1101-155	1
1947	1101-220	2
1947	1101-225	1
289-701-27	1101-30	3
289-701-27	1101-30	3
37869	1101-215	3
37869	1102-85	3
40830-505-036	1101-180	1
61-20878-1	1101-75	1
61-20880-1	1101-80	1
61-23100-1	1101-85	1
61-23100-2	1101-85	1
61-23100-4	1101-85	1
61-23100-5	1101-85	1
61-23100-7	1101-85	1
6203	1101-185	1
6203	1102-25	1
63-10155	1101-25	6
63-10155	1101-25	8
65-71061-151	1101-156	1
65-71061-151	1102-156	1
65-79164-1	1101-325	1
65-79164-1	1102	
65-79164-103	1101-	
65-79164-104	1101	
65-79164-105	1101	
65-79164-106	1101	
65-79164-107	1101-325	1
65-79164-107	1102	

65-79164

BOEING 
COMMERCIAL JET
OVERHAUL MANUAL

Part No.	Fig. and Index No.	Qty. per Assy.
65-79164-108	1101-325	1
65-79164-108	1101	
65-79164-109	1101	
65-79164-110	1101	
65-79164-111	1101	
65-79164-112	1101	
65-79164-113	1101	
65-79164-114	1101	
65-79164-115	1101	
65-79164-116	1101	
65-79164-117	1101	
65-79164-118	1101	
65-79164-13	1101	
65-79164-137	1101-325	1
65-79164-137	1102	
65-79164-138	1101-325	1
65-79164-138	1102	
65-79164-14	1101	
65-79164-15	1101	
65-79164-16	1101	
65-79164-17	1101	
65-79164-18	1101	
65-79164-19	1101	
65-79164-2	1101-325	1
65-79164-2	1102	
65-79164-20	1101	
65-79164-21	1101	
65-79164-22	1101	
65-79164-23	1101	
65-79164-24	1101	
65-79164-25	1101	
65-79164-26	1101	
65-79164-27	1101	
65-79164-28	1101	
65-79164-29	1101	
65-79164-3	1101-1	2
65-79164-3	1102-1	2
65-79164-30	1101	
65-79164-31	1101	
65-79164-32	1101	
65-79164-33	1101-325	1
65-79164-33	1102	
65-79164-34	1101-325	1
65-79164-34	1102	

Part No.	Fig. and Index No.	Qty. per Assy.
65-79164-35	1101	
65-79164-36	1101	
65-79164-37	1101	
65-79164-38	1101	
65-79164-39	1101	
65-79164-40	1101	
65-79164-41	1101	
65-79164-42	1101	
65-79164-43	1101	
65-79164-44	1101	
65-79164-45	1101	
65-79164-46	1101	
65-79164-47	1101	
65-79164-48	1101	
65-79164-49	1102	
65-79164-49	1101-325	1
65-79164-50	1101-325	1
65-79164-50	1102	
65-79164-51	1102-300	1
65-79164-52	1102-300	1
65-79164-53	1101	
65-79164-54	1101	
65-79164-55	1101	
65-79164-56	1101	
65-79164-57	1101	
65-79164-58	1101	
65-79164-59	1101	
65-79164-60	1101	
65-79164-61	1101-325	1
65-79164-62	1101-325	1
65-79164-63	1101-325	1
65-79164-64	1101-325	1
65-79164-65	1101-325	1
65-79164-66	1101-325	1
65-79164-67	1101	
65-79164-68	1101	
65-79164-69	1101	
65-79164-70	1101	
65-79164-71	1101	
65-79164-72	1101	
65-79164-73	1101	
65-79164-74	1101	
65-79164-75	1101	
65-79164-76	1101	

OVERHAUL MANUAL

Part No.	Fig. and Index No.	Qty. per Assy.	Part No.	Fig. and Index No.	Qty. per Assy.
65-79164-77	1101		65-79165-28	1102-205	1
65-79164-78	1101		65-79165-3	1102-235	1
65-79164-79	1101-330	1	65-79165-31	1101-230	2
65-79164-83	1101		65-79165-32	1101-235	1
65-79164-84	1101		65-79165-33	1102-325	1
65-79164-85	1101		65-79165-34	1102-325	1
65-79164-86	1101		65-79165-35	1102-330	1
65-79164-87	1101		65-79165-36	1102-330	1
65-79164-88	1101		65-79165-37	1102-205	1
65-79164-89	1101		65-79165-38	1102-205	1
65-79164-90	1101		65-79165-39	1102-205	1
65-79164-91	1101		65-79165-4	1102-235	1
65-79164-92	1101		65-79165-40	1102-335	1
65-79164-93	1101		65-79165-41	1102-300	1
65-79164-94	1101		65-79165-42	1102-300	1
65-79164-95	1101		65-79165-43	1102-305	1
65-79164-96	1101		65-79165-44	1102-305	1
65-79164-97	1101		65-79165-5	1101-295	1
65-79164-98	1101		65-79165-5	1102-220	1
65-79164-99	1101		65-79165-51	1102-280	1
65-79164-100	1101		65-79165-52	1102-280	1
65-79164-101	1101		65-79165-53	1102-315	1
65-79164-102	1101		65-79165-54	1102-315	1
65-79165-1	1102-200	1	65-79165-55	1102-205	1
65-79165-10	1102-100	1	65-79165-56	1102-205	1
65-79165-11	1102-335	1	65-79165-57	1102-205	1
65-79165-12	1102-335	1	65-79165-58	1102-205	1
65-79165-13	1102-300	1	65-79165-59	1102-205	1
65-79165-14	1102-300	1	65-79165-6	1101-295	1
65-79165-15	1102-305	1	65-79165-6	1102-220	1
65-79165-16	1102-305	1	65-79165-60	1102-205	1
65-79165-17	1102-310	1	65-79165-61	1102-205	1
65-79165-17	1102-315	1	65-79165-62	1102-205	1
65-79165-18	1102-310	1	65-79165-63	1102-235	1
65-79165-18	1102-315	1	65-79165-64	1102-235	1
65-79165-19	1102-280	1	65-79165-7	1102-230	1
65-79165-19	1102-285	1	65-79165-8	1102-230	1
65-79165-20	1102-280	1	65-79165-9	1102-95	2
65-79165-20	1102-285	1	65-80172-3	1101-5	1
65-79165-2	1102-200	1	65-80172-3	1101-15	1
65-79165-21	1102-260	1	65-80172-4	1101-5	1
65-79165-22	1102-260	1	65-80172-4	1101-15	1
65-79165-23	1102-225	1	65-80172-7	1101-5	1
65-79165-27	1102-205	1	65-80172-8	1101-5	1

BOEING 
COMMERCIAL JET
OVERHAUL MANUAL

Part No.	Fig. and Index No.	Qty. per Assy.	Part No.	Fig. and Index No.	Qty. per Assy.
65-85901-1	1102-355	2	69-62660-2	1101-210	1
65-85901-2	1102-355	2	69-62660-2	1102-50	1
65-85900-1	1102-400	1	69-63824-1	1101-320	1
65-85900-2	1102-405	1	69-63824-1	1102-190	1
66-25423-1	1102-18	1	69-64358-1	1102-236	1
66-25423-1	1102-316	1	69-64358-5	1102	1
66-25423-2	1102-19	1	69-64358-9	1102	1
66-25423-3	1101-156	1	69-64738-1	1101-187	1
66-25423-3	1102-156	1	69-64895-1	1102-380	4
66-25423-4	1102-19	2	69-64747-1	1101-28	1
66-25423-4	1102-317	2	69-65258-1	1101-340	1
66-25727-1	1102-385	2	69-65298-1	1101-335	1
66-25727-2	1102-390	1	69-65414-1	1101-275	1
66-25728-1	1102-350	2	690623-A1A	1101-300	1
69-32891-1	1101-85	1	690623-A1-4	1101-300	1
69-61458-1	1102-295	2	691212-13A1-A	1101-300	3
69-61459-1	1102-320	1	691212-13A1-1	1101-305	3
69-61459-2	1102-320	1			
69-61459-3	1102-320	1	700827-13A1	1101-300	1
69-61459-4	1102-320	1	700827-13A2	1101-305	3
69-61459-5	1102-320	1	710906-13A1	1101-300	1
69-61459-6	1102-320	1	710907-13A2	1101-305	3
69-61459-7	1102-320	1	720314-13A1-1	1101-301	1
69-61459-8	1102-320	1	720905-C1	1101-300	1
69-61460-6	1101-275	1			
69-61460-6	1102-120	1	8-3282	1101-115	1
69-61460-7	1101-275	1	82-19-180-16	1102-125	2
69-61460-7	1102-120	1	82-19-200-16	1102-125	2
69-61465-3	1101-320	1	82-46-101-39	1102-130	2
69-61465-3	1102-190	1			
69-61466-3	1101-110	AR			
69-61466-4	1101-90	1			
69-61468-5	1102-165	1			
69-61468-6	1102-165	1			
69-61468-7	1102-160	1			
69-61468-8	1102-160	1			
69-61469-1	1101-5	1			
69-61469-2	1101-5	1			
69-61469-5	1101-5	1			
69-61469-6	1101-5	1			
69-62320-1	1101-120	1			
69-62320-2	1101-135	1			
69-62463-1	1101-160	1			
69-62463-1	1102-5	1			