

**BOEING** *Commercial Jet*  
**OVERHAUL MANUAL**

TO: ALL HOLDERS OF PCU MODULE ASSY OVERHAUL MANUAL, 25-21-09

REVISION NO. 1, DATED JUL 5/76

HIGHLIGHTS

DESCRIPTION OF CHANGE	TOPICS AFFECTED												
	D & O	D/Assy	Cleaning	Insp/Chk	Repair	Assy	F/C	Test	T/Shooting	S/Tools	Storage	IPL	L/Overhaul
<p>Beginning with this revision separate consecutively numbered highlight sheets will be provided whenever this subject is revised.</p> <p>Added air duct assemblies 69-68932-3, -4 per latest engineering drawing</p> <p>Changed position of wire bundle clamp</p> <p>Added illustration of fastener for module assembly; changed part number to EACS12CB06-7</p>					X							X	
												X	
												X	

**BOEING**   
**COMMERCIAL JET**  
OVERHAUL MANUAL

**PSU MODULE ASSY**  
**25-21-09**

I BOEING P/N 65010324-1, -12

AIRLINE P/N

---

---

THE FOLLOWING DIRECTIVES APPLY TO THIS SUBJECT:

BOEING SERVICE BULLETIN	BOEING TEMPORARY REVISION	OTHER DIRECTIVES	DATE DIRECTIVE INCORPORATED INTO TEXT

**BOEING**   
**COMMERCIAL JET**  
**OVERHAUL MANUAL**

LIST OF EFFECTIVE PAGES					
* Indicates pages revised, added or deleted in latest revision					
F Indicates foldout pages - print one side only					
PAGE	DATE	PAGE	DATE	PAGE	DATE
25-21-09					
T-1	Dec 25/75				
T-2	BLANK				
* LEP-1	Jul 5/76				
LEP-2	BLANK				
T/C-1	Dec 25/75				
T/C-2	BLANK				
* 1	Jul 5/76				
* 2	Jul 5/76				
3	Dec 25/74				
4	BLANK				
5	Dec 25/75				
* 6	Jul 5/76				
* 7	Jul 5/76				
8	Dec 25/74				
* 9	Jul 5/76				
* 10	Jul 5/76				
11	Dec 25/75				
12	Dec 25/75				

**BOEING**   
**COMMERCIAL JET**  
**OVERHAUL MANUAL**

TABLE OF CONTENTS

<u>Paragraph Title</u>	<u>Page</u>
Description and Operation . . . . .	*
Disassembly . . . . .	*
Cleaning. . . . .	*
Inspection/Check. . . . .	*
Repair. . . . .	1
Assembly. . . . .	*
Fits and Clearances . . . . .	None
Testing . . . . .	*
Trouble Shooting. . . . .	*
Storage Instructions. . . . .	*
Special Tools, Fixtures, and Equipment. . . . .	None
Illustrated Parts List. . . . .	5

| \*This manual contains only repair information and illustrated parts list.  
 All other approved procedures for this unit are in 25-20-00, Passenger  
 Service Unit Overhaul Procedures.

**BOEING**   
**COMMERCIAL JET**  
**OVERHAUL MANUAL**

PSU MODULE ASSY

1. REPAIR (Fig. 2)

A. Materials

NOTE: Use listed materials or equivalent substitutes.

- (1) Adhesive -- Type 72 (Ref 20-50-12)
- (2) Lacquer, Hi-speed semigloss (Ref 20-60-02)
- (3) Primer -- AC 5365; Hysol Corp., 1100 Seneca Ave., Olean, New York 14760

B. Refinish (Fig. 2)

CAUTION: DO NOT USE HI-SPEED LACQUER TO REFINISH POLYCARBONATE PLASTIC PARTS. IT WILL CAUSE INSTANT DETERIORATION THAT MAY NOT BE VISUALLY DETECTABLE.

NOTE: Refer to 20-30-02 for stripping of protective finishes, and to 20-41-01 for explanation of F and SRF finish codes.

- (1) Light assy (110) -- Apply two coats hi-speed semigloss lacquer, BAC 8008 umber, (F-14.904-8008) on all exposed surfaces outside PSU.
- (2) Plunger (250) and plunger body (255) -- Chromic acid anodize (F-2.26) all over. Material: Alum alloy.
- (3) Bolt (265) -- Cadmium plate per 20-42-05, type 2, class 3 (F-1.1926) all over. Material: 4340 Steel, 125-145 ksi.
- (4) Latch bracket (295) and support bracket (305) -- Alodize or chromic acid anodize then apply primer, BMS 10-11, type 1 (SRF-2.30) all over. Material: Alum alloy.

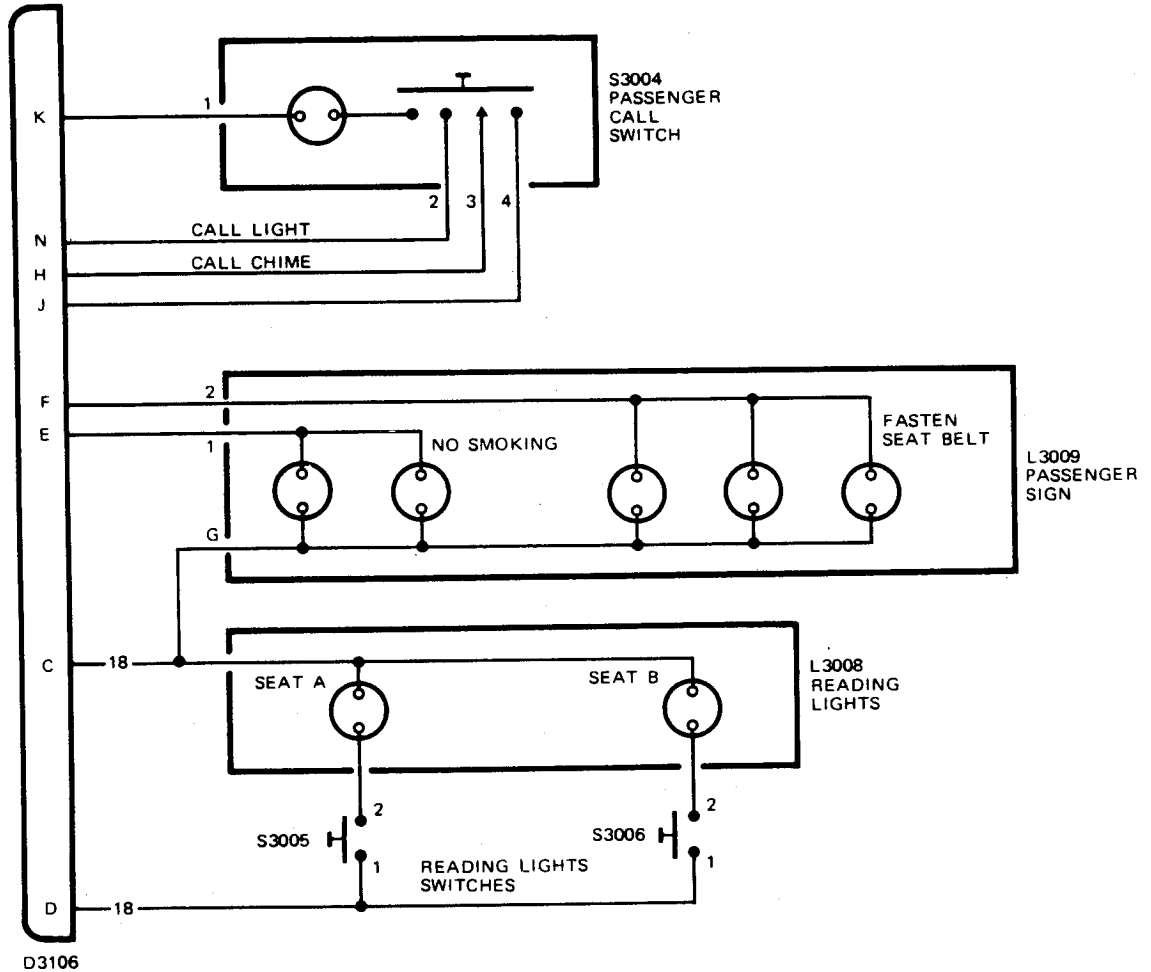
C. Replacement (Fig. 1 and 2)

- (1) If fitting assembly (35) or air duct (45) on air duct assembly (34, 69-68932-3) needs to be replaced, bond new parts using type 72 adhesive per 20-50-12.

**BOEING**   
**COMMERCIAL JET**  
**OVERHAUL MANUAL**

- (2) If switch divider (175, Fig. 2) is replaced, bond in place in module (180) per 20-50-12, using only methyl cryanoacrylate or permabond, type 50 adhesive.
- (3) If call switch lens (190) is replaced, install with head of figure inboard, i.e., toward latch assy (240).
- (4) If light switch lens (200) is replaced, install with light symbol pointing forward, away from reading light assy (110).
- (5) If mount angles (205 thru 220) are replaced:
  - (a) Make new angle from BAC1489-233 stock using old angle as pattern.
  - (b) Brush thin continuous coating of Hysol AC 5365 primer on aluminum surfaces only.
  - (c) Allow 1/2 to 1 hour for primer to cure or until dry to touch.
  - (d) Bond angle in place using type 70 adhesive per 20-50-12.

**BOEING**   
**COMMERCIAL JET**  
**OVERHAUL MANUAL**

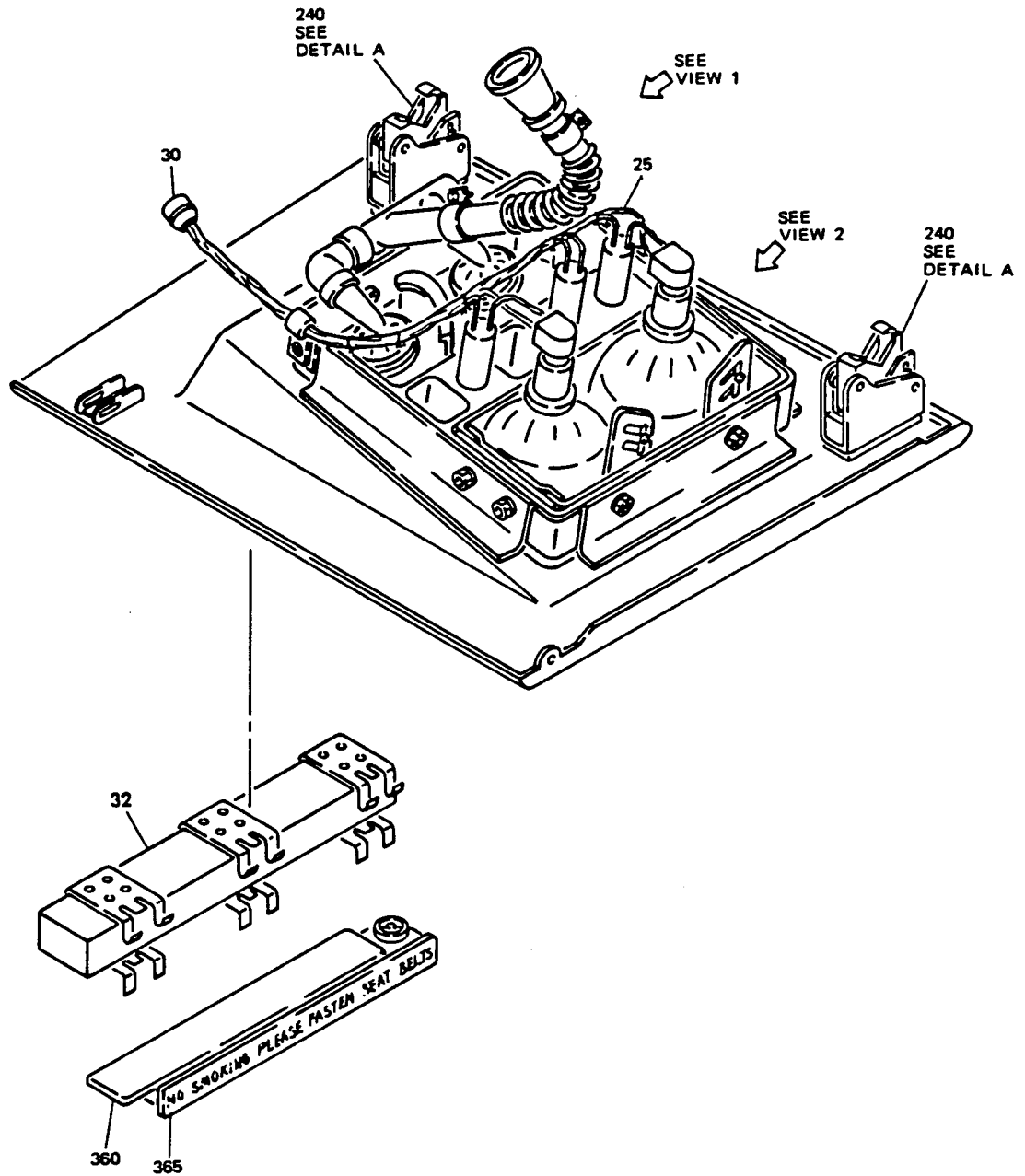


NOTE: ALL WIRES ARE BMS 13-13, TYPE 1, CLASS 1, SIZE AWG 20  
 EXCEPT SIZE AWG 18 WIRES ARE BMS 13-31, TYPE 1,  
 CLASS 1

Schematic Diagram  
 Figure 1

**BOEING**   
**COMMERCIAL JET**  
**OVERHAUL MANUAL**

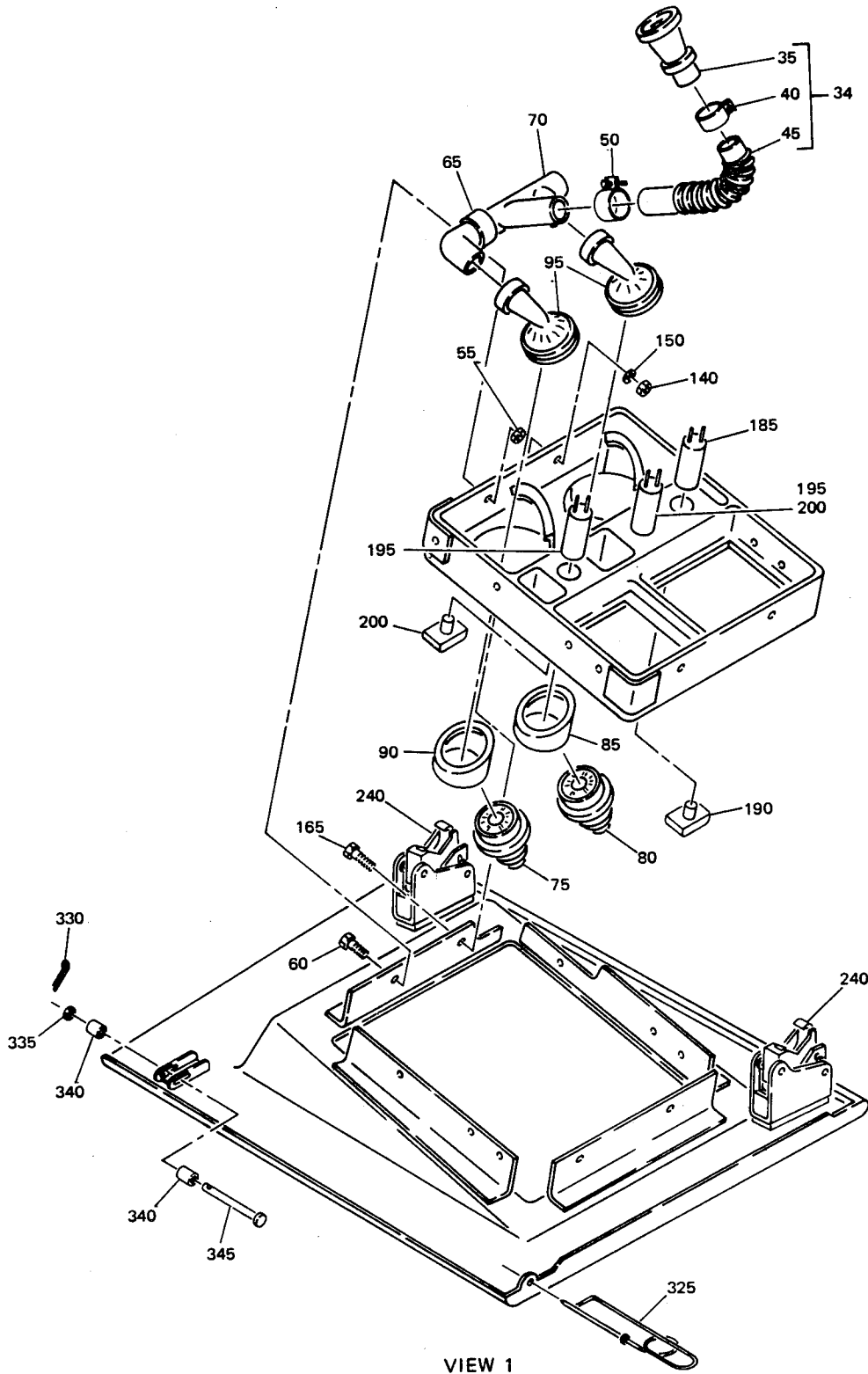
2. ILLUSTRATED PARTS LIST





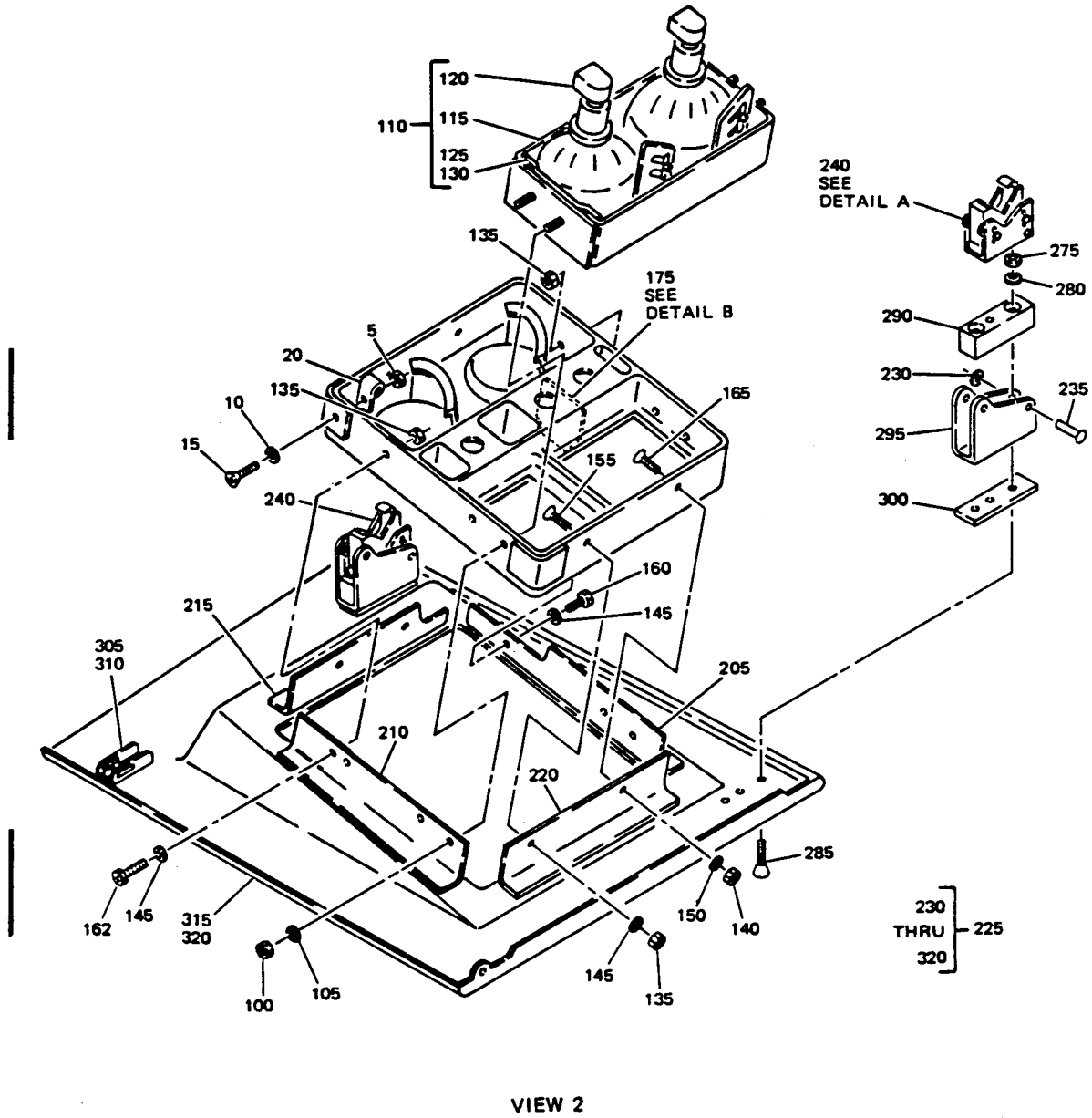
**BOEING**  
**COMMERCIAL JET**  
**OVERHAUL MANUAL**

65C10324



PSU Module Assembly  
 Figure 2 (Sheet 2)

**BOEING**  
**COMMERCIAL JET**  
**OVERHAUL MANUAL**

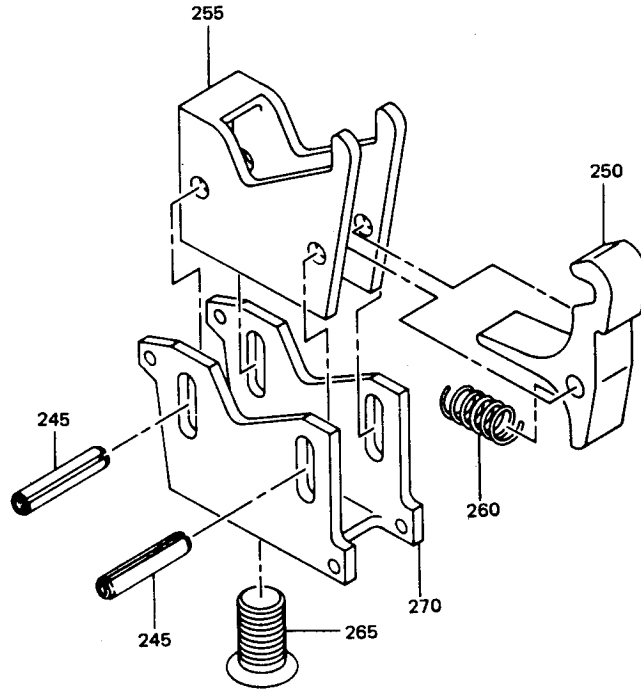


Jul 5/76

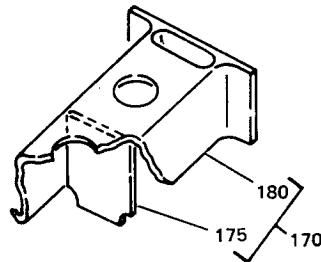
PSU Module Assembly  
 Figure 2 (Sheet 3)

**BOEING**   
**COMMERCIAL JET**  
**OVERHAUL MANUAL**

65C10324



DETAIL A



DETAIL B

**BOEING**   
**COMMERCIAL JET**  
**OVERHAUL MANUAL**

FIG. & ITEM NO.	PART NO.	AIRLINE PART NUMBER	N O M E N C L A T U R E							USE CODE	QTY PER ASSY
			1	2	3	4	5	6	7		
2-1	65C10324-1									A	RF
1	65C10324-12									B	RF
5	BACN10JCO6										2
10	AN960D6										2
15	BACS12CB06-9										2
20	BACCL0DK6										1
25	61-33102-1									A	1
25	61-33102-3									B	1
30	67-907										1
32	65C10324-13									A	1
32	800 000 095-1									B	1
34	69-68932-3										1
34	69-68932-4										1
35	69-64738-1										1
40	MS3367-4-9										1
45	BE406-4										1
50	6203										1
55	BACN10JCO8										1
60	BACS12CB08-8										1
65	BACCL0DK12										1
70	69-62660-4										1
75	L16999-15C										1
80	L20646-1C										1
85	65-79165-31										1
90	65-79165-32										1
95	37869										2
100	BACN10JCO6										4
105	AN960D6										4
110	69-66655-1										1
115	69-66655-2										1
120	10-0429-1										1
125	69-66655-3										1
130	BACR15BB4D										4
135	BACN10JCO6										3
140	BACN10JCO8										2
145	AN960D6										3
150	AN960D8										2
155	NAS514P632-6										1

**BOEING**   
**COMMERCIAL JET**  
**OVERHAUL MANUAL**

65C10324

FIG. & ITEM NO.	PART NO.	AIRLINE PART NUMBER	NOMENCLATURE							USE CODE	QTY PER ASSY
			1	2	3	4	5	6	7		
2-											
160	BACS12CB06-6						. SCREW				1
162	BACS12CB06-7						. SCREW				1
165	NAS514P832-6						. SCREW				2
170	65C10324-3						. SHELL ASSY				1
175	65-79165-23						. . DIVIDER, SWITCH				1
180	65-79165-7						. . MODULE, BASIC (MODIFIED)				1
185	710906-13A1						. SWITCH, CALL, V97564				1
190	690623A1-4						. LENS, CALL SWITCH, V97564				1
195	710907-13A2						. SWITCH, LIGHT, V97564				2
200	691212-13A1-1						. LENS, LIGHT SWITCH, V97564				2
205	65C10324-7						. ANGLE, MOUNT				1
210	65C10324-8						. ANGLE, MOUNT				1
215	65C10324-9						. ANGLE, MOUNT				1
220	65C10324-10						. ANGLE, MOUNT				1
225	65C10324-2						. MODULE ASSY				1
230	6100-9						. . RETAINER, V97464				4
235	BACR15BB3D12						. . PIN, RIVET				4
240	65-85901-3						. . LATCH ASSY				2
245	MS16562-34						. . . PIN				2
250	65-85908-1						. . . PLUNGER				1
255	65-85907-1						. . . PLUNGER BODY				1
260	RC3288						. . . SPRING, V08205				1
265	65-85905-3						. . . BOLT				1
270	69-66979-1						. . . LATCH BODY				1
275	BACN10JC04						. . NUT				4
280	AN960D4L						. . WASHER				4
285	BACB30LU4-6						. . BOLT				4
290	65C10326-14						. . BLOCK, MOUNT				2
295	69-66651-7						. . BRACKET, LATCH				2
300	65C10326-15						. . BLOCK, MOUNT				2
305	69-67512-1						. . BRACKET, SUPPORT				1
310	BACR15BA3A						. . RIVET				2
315	65C10339-1						. . REVEAL				1
320	65C10324-4						. . COVER, DECORATIVE				1
							INSTALLATION PARTS				
325	69-64539-1						PIN ASSY				1
330	MS24665-132						PIN, COTTER				1
335	AN960D4L						WASHER				1
340	NAS42DD4-5A						SPACER				2
345	MS20392-1C23						PIN				1
350	800 000 095-1						DELETED				

**BOEING**   
**COMMERCIAL JET**  
**OVERHAUL MANUAL**

FIG. & ITEM NO.	PART NO.	AIRLINE PART NUMBER	N O M E N C L A T U R E							USE CODE	QTY PER ASSY
			1	2	3	4	5	6	7		
2-355	800 000 095-4		DELETED								
360	10-0040-150		LENS ASSY, V72914 (BOEING 10-60781-143)							A	1
360	800 000 095-3		LAMP HOUSING, V05617 (BOEING 10-61892-3)							B	1
365	800 000 095-5		LENS, V05617 (BOEING 10-61892-5)							B	1

\*[1] MAY BE SUPPLIED AS PART OF 10-60141-18 OR -19

REFERENCE DESIGNATION INDEX (SEE SCHEMATIC DIAGRAM)		
REFERENCE DESIGNATION	PART NUMBER	ITEM NO.
D3106	67-907	30
L3008	69-66655-1	110
I3009	800 000 095 -3	360
S3004	710906-13A1	185
S3005-S3006	710907-13A2	195

**BOEING**   
**COMMERCIAL JET**  
**OVERHAUL MANUAL**

65010324

VENDORS

V02660 BUNKER RAMO CORP., AMPHENOL CONNECTOR DIV., 2801 S. 25TH AVENUE,  
BROADVIEW, ILLINOIS 60153

V05399 BEMCO INC., P.O. BOX 68, CENTERTON, ARKANSAS 72719

V05617 BELL INDUSTRIES, FARWEST MFG. DIV., 12410 SE 32ND ST., BELLEVUE,  
WASHINGTON 98005

V08205 RENTON COIL SPRING CO., P.O. BOX 328, 325 BURNETT NORTH, RENTON,  
WASHINGTON 98055

V17744 LUMINATOR DIV., GULTON INDUSTRIES INC., 1200 E. DALLAS N. PARKWAY,  
PLANO, TEXAS 75075

V21868 DELETED

V72914 GRIMES MFG. CO., 515 N. RUSSELL STREET, URBANA, OHIO 43078

V81646 IDEAL CORP., P.O. BOX 8827 CHURCH STREET STATION, NEW YORK, NEW YORK  
10049

V97464 INDUSTRIAL RETAINING RING CO., 57 CORDIER STREET, IRVINGTON,  
NEW JERSEY 07111

V97564 CLARE-PENDAR INC., P.O. BOX 785, POST FALLS, IDAHO 83854