



OVERHAUL MANUAL

TO: ALL HOLDERS OF PARTIAL SECTION PASSENGER SERVICE UNIT ASSEMBLY OVERHAUL MANUAL, 25-21-11

REVISION NO. 3, DATED JUN 5/84

HIGHLIGHTS

DESCRIPTION OF CHANGE	TOPICS AFFECTED												
	D & O	D / Assy	Cleaning	Inspect/Chk	Repair	Assy	F/C	Test	T/Shooting	S/Tools	Storage	IPL	L/Overhaul
Added psu assy 65C10590-5, -6 with 65-79165-72 module per PRR 32980-7												X	

# PARTIAL SECTION PASSENGER SERVICE UNIT ASSEMBLY

## 25-21-11

BOEING P/N 65C10590-1, -4, -5, -6

AIRLINE P/N

---

THE FOLLOWING DIRECTIVES APPLY TO THIS SUBJECT:

BOEING SERVICE BULLETIN	BOEING TEMPORARY REVISION	OTHER DIRECTIVES	DATE DIRECTIVE INCORPORATED INTO TEXT
25-1151		MC 3038-22K PRR 33004-14 PRR 32980-7	Jul 5/83 Jun 5/84 Jun 5/84

OVERHAUL MANUAL

LIST OF EFFECTIVE PAGES

\* Indicates pages revised, added or deleted in latest revision  
 F Indicates foldout pages - print one side only

PAGE	DATE	PAGE	DATE	PAGE	DATE
25-21-11					
* T-1	Jun 5/84				
T-2	BLANK				
* LEP-1	Jun 5/84				
LEP-2	BLANK				
T/C-1	Jul 5/76				
T/C-2	BLANK				
1	Jul 5/76				
2	Jul 5/76				
3	BLANK				
4	Jul 5/76				
5	Jul 5/76				
6	Jul 5/76				
* 7	Jun 5/84				
* 8	Jun 5/84				

**BOEING**   
**COMMERCIAL JET**  
**OVERHAUL MANUAL**

TABLE OF CONTENTS

<u>Paragraph Title</u>	<u>Page</u>
Description and Operation . . . . .	*
Disassembly . . . . .	*
Cleaning. . . . .	*
Inspection/Check. . . . .	*
Repair. . . . .	1
Assembly. . . . .	*
Fits and Clearances . . . . .	None
Testing . . . . .	*
Trouble Shooting. . . . .	*
Storage Instructions. . . . .	*
Special Tools, Fixtures, and Equipment. . . . .	None
Illustrated Parts List. . . . .	4

\*This manual contains only repair information and illustrated parts list.  
 All other approved procedures for this unit are in 25-20-00, Passenger  
 Service Unit Overhaul Procedures.

**BOEING**   
**COMMERCIAL JET**  
**OVERHAUL MANUAL**

PARTIAL SECTION PASSENGER SERVICE UNIT ASSY

1. REPAIR

A. Materials

NOTE: Use listed material or equivalent substitute.

- (1) Adhesive -- Type 72 (Ref 20-50-12)
- (2) Enamel (Ref 20-60-02)
  - (a) BMS 10-11, type 2, BAC8008 umber
  - (b) BMS 10-83, type 2, BAC7144 off white
- (3) Primer (Ref 20-60-02)
  - (a) BMS 10-11, type 1
  - (b) BMS 10-83, type 1

B. Refinish

CAUTION: DO NOT USE HI-SPEED LACQUER TO REFINISH POLYCARBONATE PLASTIC PARTS. IT WILL CAUSE INSTANT DETERIORATION THAT MAY NOT BE VISUALLY DETECTABLE.

NOTE: Refer to 20-30-02 for stripping of protective finishes, and to 20-41-01 for explanation of F and SRF finish codes.

- (1) Light assy (90) -- Apply semigloss epoxy enamel, BMS 10-11, Type 2, BAC8008 umber (F-14.904-8008) on all exposed exterior surfaces.
- (2) Bolt (20) -- Cadmium plate (F-1.1926) all over. Material: Steel, 4340 AMS, 125-145 ksi.
- (3) Latch bracket (60) -- Alodize or chromic acid anodize then apply primer, BMS 10-11, type 1 (SRF-2.30) all over, plus BMS 10-83, type 1 primer and BMS 10-83 type 2 enamel, BAC7144 off white (F-22.05-7144) on all exposed surfaces. Material: Alum Alloy.

**BOEING**   
**COMMERCIAL JET**  
**OVERHAUL MANUAL**

65C10590

C. Replacement

- (1) If module assy (110) is replaced, shim between module and PSU assy with BMS 8-2A plastic sheeting as required to ensure straightness in lower surface of PSU.

NOTE: Maximum deviation of lower surface from straight line to be 0.06-inch total. Deviation not to exceed 0.01-inch per inch.

- (2) If fitting assembly (168) or air duct (170) on air duct assembly (166, 69-68932-1) needs to be replaced, bond new parts using type 72 adhesive per 20-50-12.
- (3) If call switch lens (185) is replaced, install with head of figure toward latch assy (15).
- (4) If light switch lens (190) is replaced, install with light symbol pointing away from reading light assy (90).

**BOEING**   
**COMMERCIAL JET**  
**OVERHAUL MANUAL**

65C10590

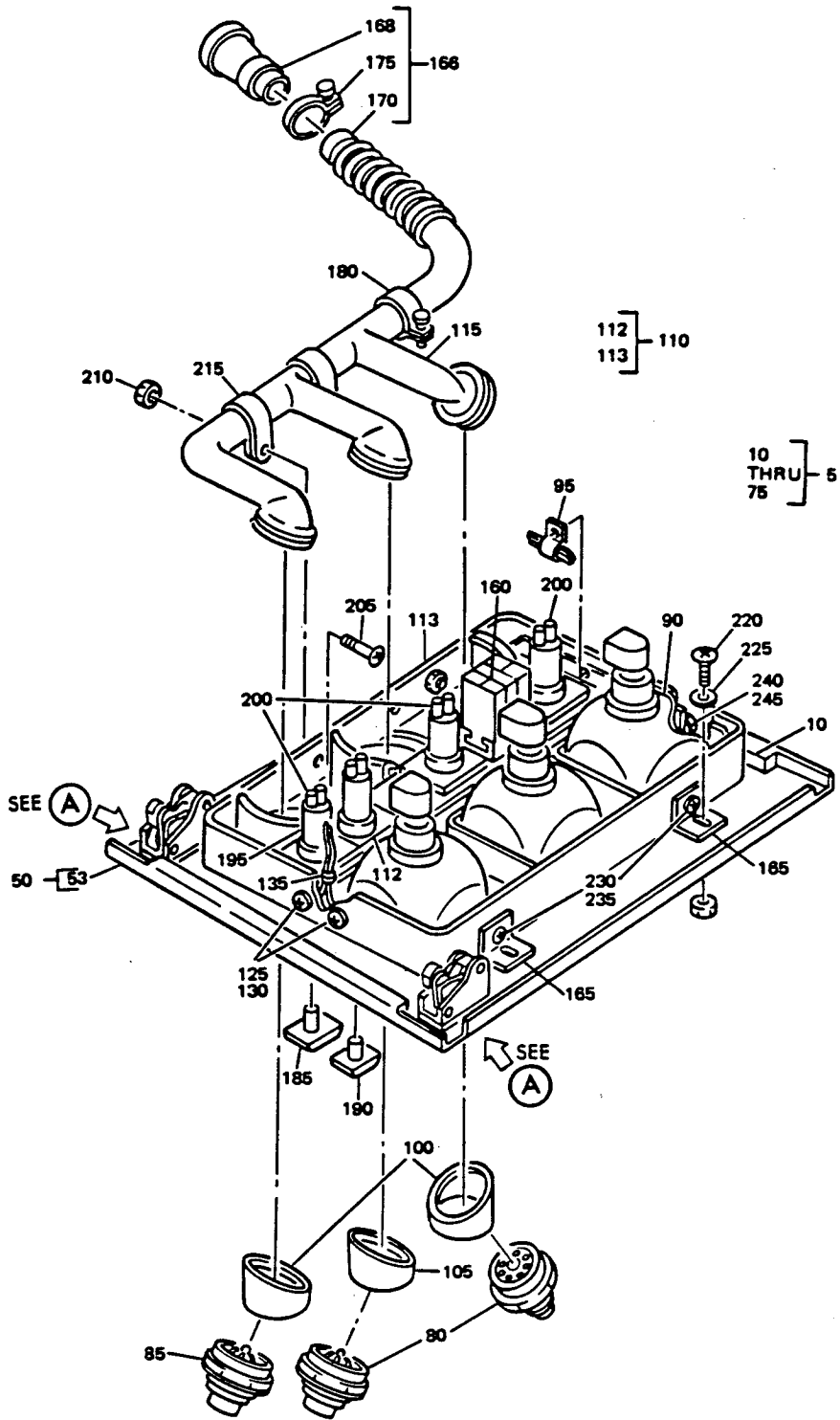
2. ILLUSTRATED PARTS LIST

REFERENCE DESIGNATION INDEX (SEE 25-20-00 SCHEMATIC)		
REFERENCE DESIGNATION	PART NUMBER	ITEM NO.
D3100	67-907	97
L3001	10-0429-2	90
S3000	710906-13A1	195
S3001-S3003	710907-13A2	300

VENDORS

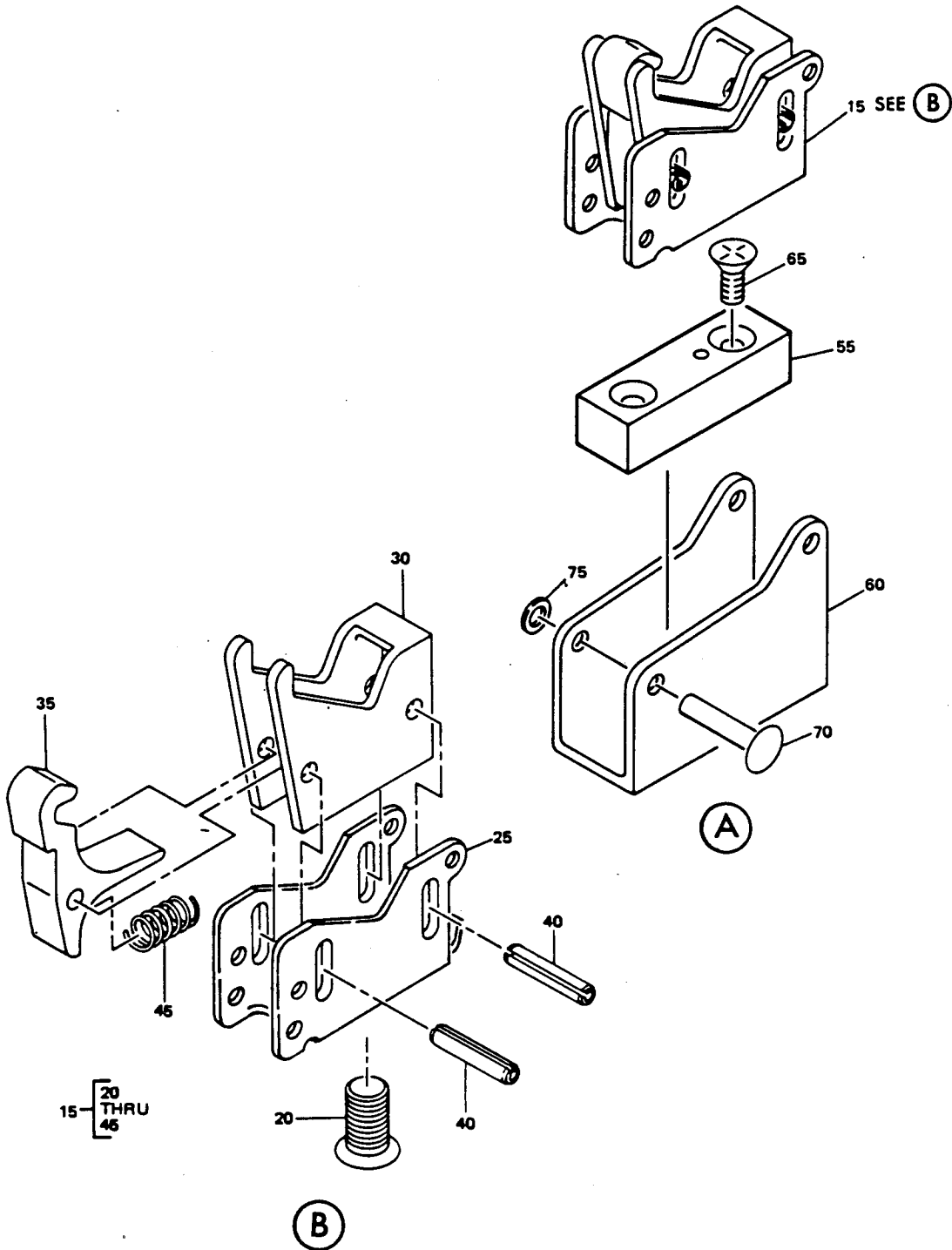
- V02660 BUNKER RAMO CORP., AMPHENOL CONNECTOR DIV., 2801 S. 25TH AVENUE,  
BROADVIEW, ILLINOIS 60153
- V05399 BEMCO INC., P.O. BOX 68, CENTERTON, ARKANSAS 72719
- V08205 RENTON COIL SPRING CO., P.O. BOX 328, 325 BURNETT NORTH, RENTON,  
WASHINGTON 98055
- V17744 LUMINATOR DIV., GULTON INDUSTRIES INC., 1200 E. DALLAS N. PARKWAY,  
PLANO, TEXAS 75075
- V72914 GRIMES MFG. CO., 515 N. RUSSELL STREET, URBANA, OHIO 43078
- V81646 IDEAL CORP., P.O. BOX 8827 CHURCH STREET STATION, NEW YORK, NEW YORK  
10049
- V97393 SHUR-LOK CORP., 1300 E. NORMANDY PL., SANTA ANA, CALIFORNIA 92711
- V97564 CLARE-PENDAR INC., P.O. BOX 785, POST FALLS, IDAHO 83854

**BOEING**   
**COMMERCIAL JET**  
**OVERHAUL MANUAL**



Partial Section Passenger Service Unit Assy  
Figure 1 (Sheet 1)





Partial Section Passenger Service Unit Assy  
 Figure 1 (Sheet 2)

## OVERHAUL MANUAL

FIG. & ITEM NO.	PART NO.	AIRLINE PART NUMBER	N O M E N C L A T U R E							USE CODE	QTY PER ASSY
			1	2	3	4	5	6	7		
1-											
1	65C10590-1									A	RF
1	65C10590-4									B	RF
1	65C10590-5									C	RF
1	65C10590-6									D	RF
5	65C10590-3										1
10	65C10590-2										1
15	65-85901-3										2
20	65-85905-3										1
25	69-66979-1										1
30	65-85907-1										1
35	65-85908-1										1
40	MS16562-34										2
45	RCS3288										1
50	65C10323-11										1
52	SL607-06-4S										8
53											1
55	65C10326-9										2
60	69-66651-7										2
65	BACB30LU06-5										4
70	BACR15BB3D12										4
75	6100-9										4
80	16999-15C										2
85	L20646-1C										1
90	10-0429-2										
90	69-66655-4										1
95	61-23100-5									A	1
95	61-23100-8									BCD	1
97	67-907										1
100	65-79165-31										2
105	65-79165-32										1
110	65-79165-6									AB	1
110	65-79165-72									CD	1
112	65-79165-23										1
113	65-79165-8										1

OVERHAUL MANUAL

FIG. & ITEM NO.	PART NO.	AIRLINE PART NUMBER	N O M E N C L A T U R E							USE CODE	QTY PER ASSY
			1	2	3	4	5	6	7		
1-											
115	69-62660-2		.								1
120	69-63824-1		.								1
120A	69-63824-3		.								
125	NAS602-8P		.								2
130	BACN10JC08		.								2
135	69-63824-2		.	.							1
140	63-10191-1		.	.							1
145	63-9446		.	.							1
150	69-55039-1		.	.							1
155	69-64738-1		.	.							1
160	69-65298-1										
160	69-65298-2		.						AB		1
165	69-67521-1		.						CD		1
166	69-68932-1		.								4
166	69-68932-2		.								1
166	69-68932-2		.						ABC		1
168	69-64738-1		.	.							1
170	BE406-3		.	.							1
175	MS3367-4-9		.	.							1
180	6203		.	.							1
185	690623A1-4		.								1
190	691212-13A1-1		.						ABD		1
											3
190	691212-13A1-1AJ		.						B		3
195	710906-13A1		.								1
200	710907-13A2		.								3
200	710907-13A2		.						AB		2
200	920056		.						CD		1
205	NAS602-8P		.								2
210	BACN10FX-83		.								2
215	BACC10DK12		.								2
210	NAS601-4P		.								4
225	AN960PD6		.								4
230	NAS514P832-5P		.								4
235	BACN10JC-08		.								4
240	MS35335-31		.								4
245	MS35649-282		.								4