

BOEING
COMMERCIAL JET
OVERHAUL MANUAL

TO: ALL HOLDERS OF PASSENGER SERVICE UNIT ASSEMBLY OVERHAUL MANUAL, 25-21-13

REVISION NO. 2, DATED JUL 5/77

HIGHLIGHTS

DESCRIPTION OF CHANGE	TOPICS AFFECTED												
	D & O	D/Assy	Cleaning	Insp/Chk	Repair	Assy	F/C	Test	T/Shooting	S/Tools	Storage	IPL	L/Overhaul
Replaced 65-79164-158 (call light) with 93250LXXX												X	

Jul 5/77

PASSENGER SERVICE UNIT ASSEMBLY

25-21-13

BOEING P/N 65710794-1 thru -8, -13 thru -16, -19 thru -22, -25 thru -28,
-31, -32

AIRLINE P/N

THE FOLLOWING DIRECTIVES APPLY TO THIS SUBJECT:

BOEING SERVICE BULLETIN	BOEING TEMPORARY REVISION	OTHER DIRECTIVES	DATE DIRECTIVE INCORPORATED INTO TEXT

BOEING 
COMMERCIAL JET
OVERHAUL MANUAL

LIST OF EFFECTIVE PAGES					
* Indicates pages revised, added or deleted in latest revision					
F Indicates foldout pages - print one side only					
PAGE	DATE	PAGE	DATE	PAGE	DATE
25-21-13					
T-1	Apr 5/77				
T-2	BLANK				
* LEP-1	Jul 5/77				
LEP-2	BLANK				
T/C-1	Jul 5/76				
T/C-2	BLANK				
1	Apr 5/77				
2	Apr 5/77				
3	Jul 5/76				
4	BLANK				
5	Jul 5/76				
6	BLANK				
7	Jul 5/76				
8	BLANK				
9	BLANK				
10	Jul 5/76				
11	Apr 5/77				
12	Jul 5/76				
13	Jul 5/76				
14	Jul 5/76				
15	Apr 5/77				
16	Apr 5/77				
17	Apr 5/77				
18	Apr 5/77				
* 19	Jul 5/77				
20	Apr 5/77				
21	Apr 5/77				
22	BLANK				

BOEING 
COMMERCIAL JET
OVERHAUL MANUAL

TABLE OF CONTENTS

<u>Paragraph Title</u>	<u>Page</u>
Description and Operation	*
Disassembly	*
Cleaning.	*
Inspection/Check.	*
Repair.	1
Assembly.	*
Fits and Clearances	None
Testing	3
Trouble Shooting.	*
Storage Instructions.	*
Special Tools, Fixtures, and Equipment.	None
Illustrated Parts List.	10

*This manual contains only refinish and replacement information, testing for electrical components peculiar to assemblies covered in this manual, and illustrated parts list. All other approved procedures for this unit are in 25-20-00, Passenger Service Unit Overhaul Procedures.

BOEING 
COMMERCIAL JET
OVERHAUL MANUAL

PASSENGER SERVICE UNIT ASSEMBLY

1. REPAIR

A. Materials

NOTE: Use listed material or equivalent substitute.

- (1) Adhesive -- Type 72 (Ref 20-50-12)
- (2) Lacquer -- Hi-speed (Ref 20-60-02)
- (3) Primer -- EMS 10-11, type 1 (Ref 20-60-02)
- (4) Sealant -- Dow Corning 30-079 clear aerospace adhesive sealant, Dow Corning Corp., S. Saginaw Rd., Midland, Michigan 48640
- (5) Tape, white, 1- and 3-inch widths -- P-32 vinyl, Permacel Div, Johnson and Johnson Inc., U.S. Highway 1, New Brunswick, New Jersey 08901

B. Refinish

CAUTION: DO NOT USE HI-SPEED LACQUER TO REFINISH POLYCARBONATE PLASTIC PARTS. IT WILL CAUSE INSTANT DETERIORATION THAT MAY NOT BE VISUALLY DETECTABLE.

NOTE: Refer to 20-30-02 for stripping of protective finishes, and to 20-41-01 for explanation of F and SRF finish codes.

- (1) Mount assembly (110, Fig. 3) -- Alodize or anodize and prime (SRF-2.30) all over. Material: Alum alloy.
- (2) Heat shield (385) -- Apply two coats hi-speed lacquer (F-14.904-711) all over. Material: Alum alloy.
- (3) Basic PSU assembly (460) -- Refinish per operator's standard material and color scheme.

C. Replacement

- (1) If replacement of quick-disconnect fitting assembly (200) or air duct (205) becomes necessary bond new parts using type 72 adhesive per 20-50-12.
- (2) If replacement of plenum assembly (240) or gasket (275) becomes necessary, seal around edge of plenum with Dow Corning 30-079 clear aerospace adhesive sealant after assembly.

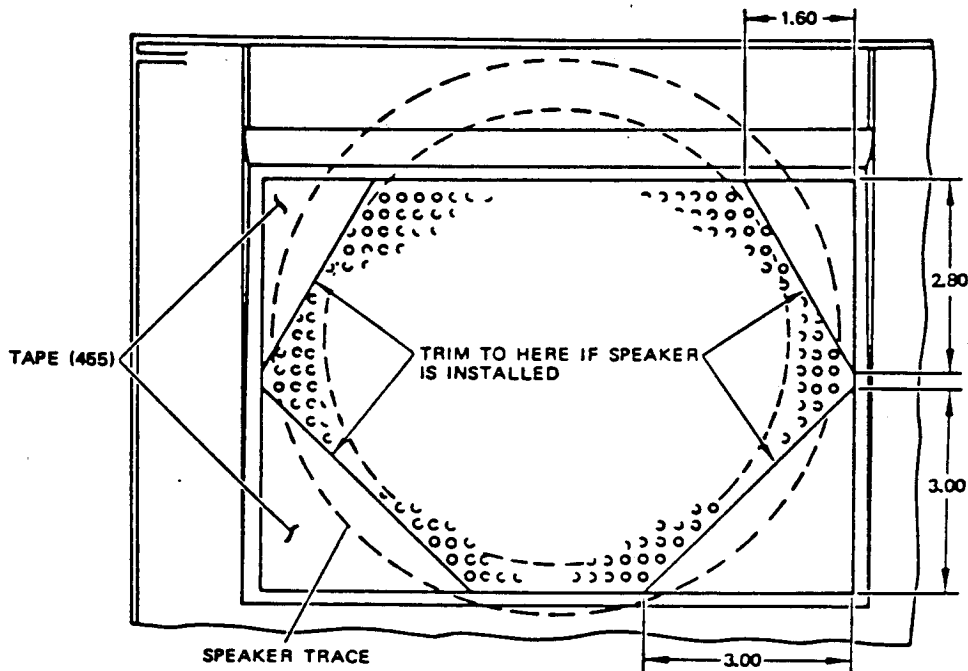
BOEING
COMMERCIAL JET
OVERHAUL MANUAL

65V10794
DASH NUMBERS LIMITED

- (3) If gaskets (290, 295) need to be replaced, fabricate new part from EMS 1-59, type B, grade 50 silicone rubber sheet 0.016-inch thick, or from class 1, grade 40 white neoprene. Alternatively, if desired, air outlets may be sealed using Dow Corning 30-079 clear aerospace adhesive sealant in place of gaskets (290, 295).

NOTE: Sealant must not be visible on outside of air outlet or surrounding surfaces when viewed from cabin interior.

- (4) Replace tape (455) if required. Trim tape per Fig. 1 on units having speaker assemblies (60) installed.
- (a) Paint speaker grille face after tape is applied, per applicable color code, to cover tape adhesive exposed through speaker grille holes.

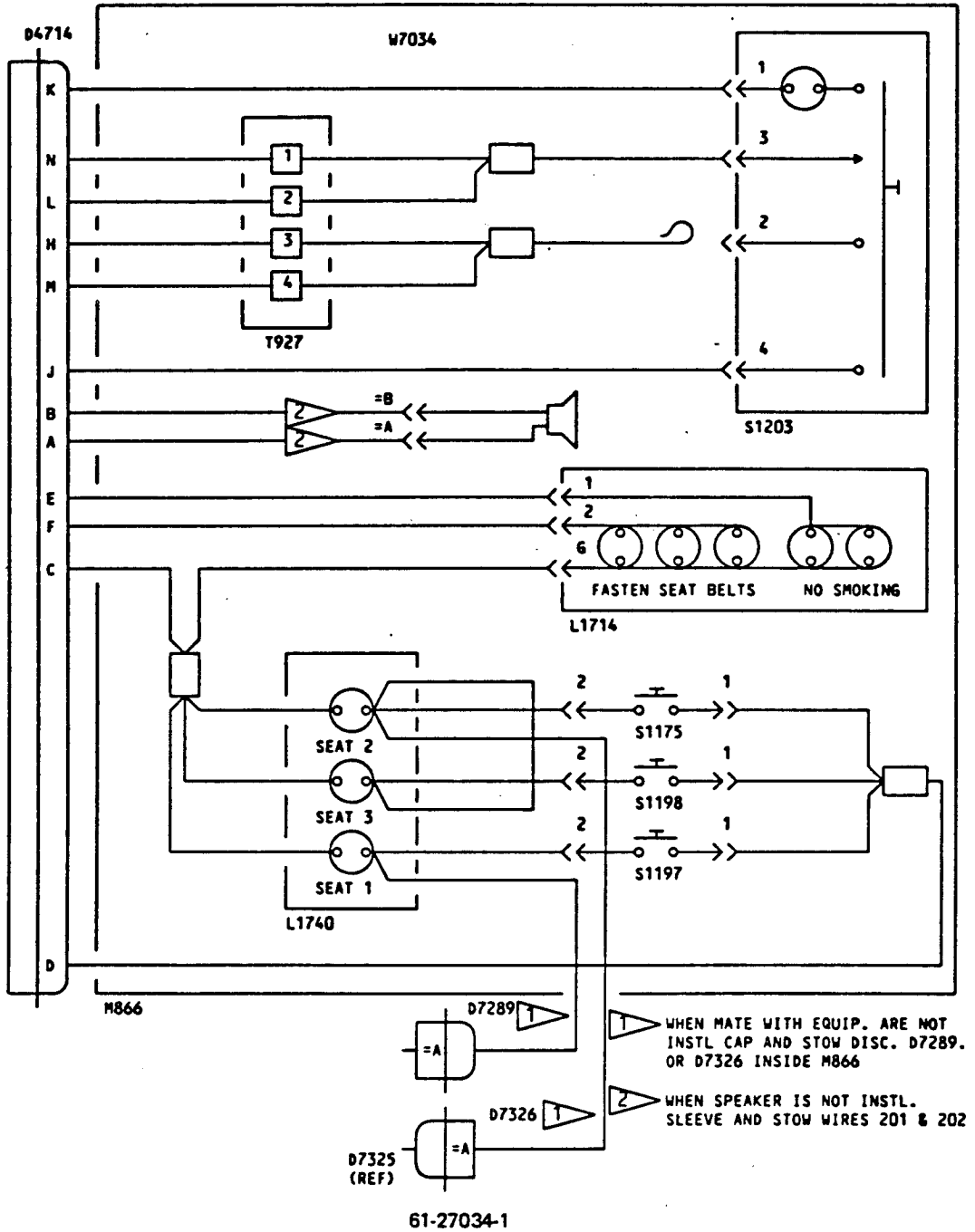


ALL DIMENSIONS ARE IN INCHES

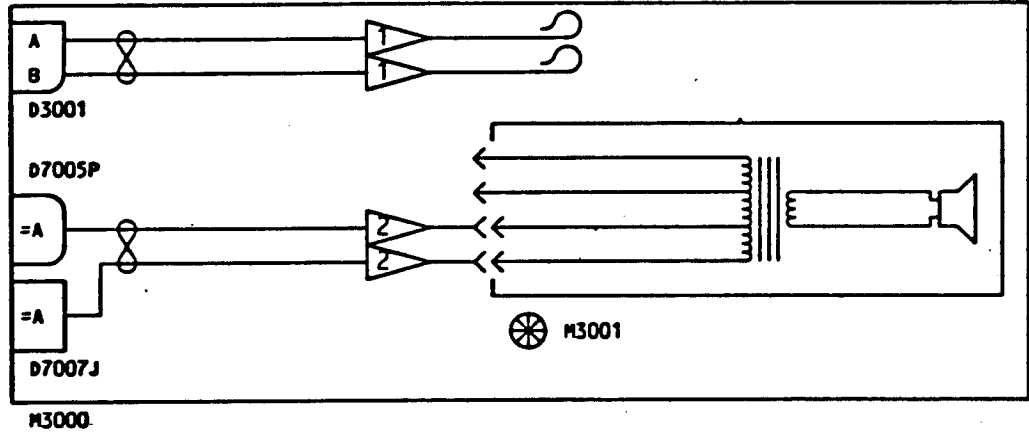
Tape Application
Figure 1



2. TESTING

- A. Test continuity of electrical circuits having wire bundle 61-30713-001, 61-33116-1 or 61-27034-1 per Fig. 2. Check circuit having wire bundle 61-23100-8 per 25-20-00.

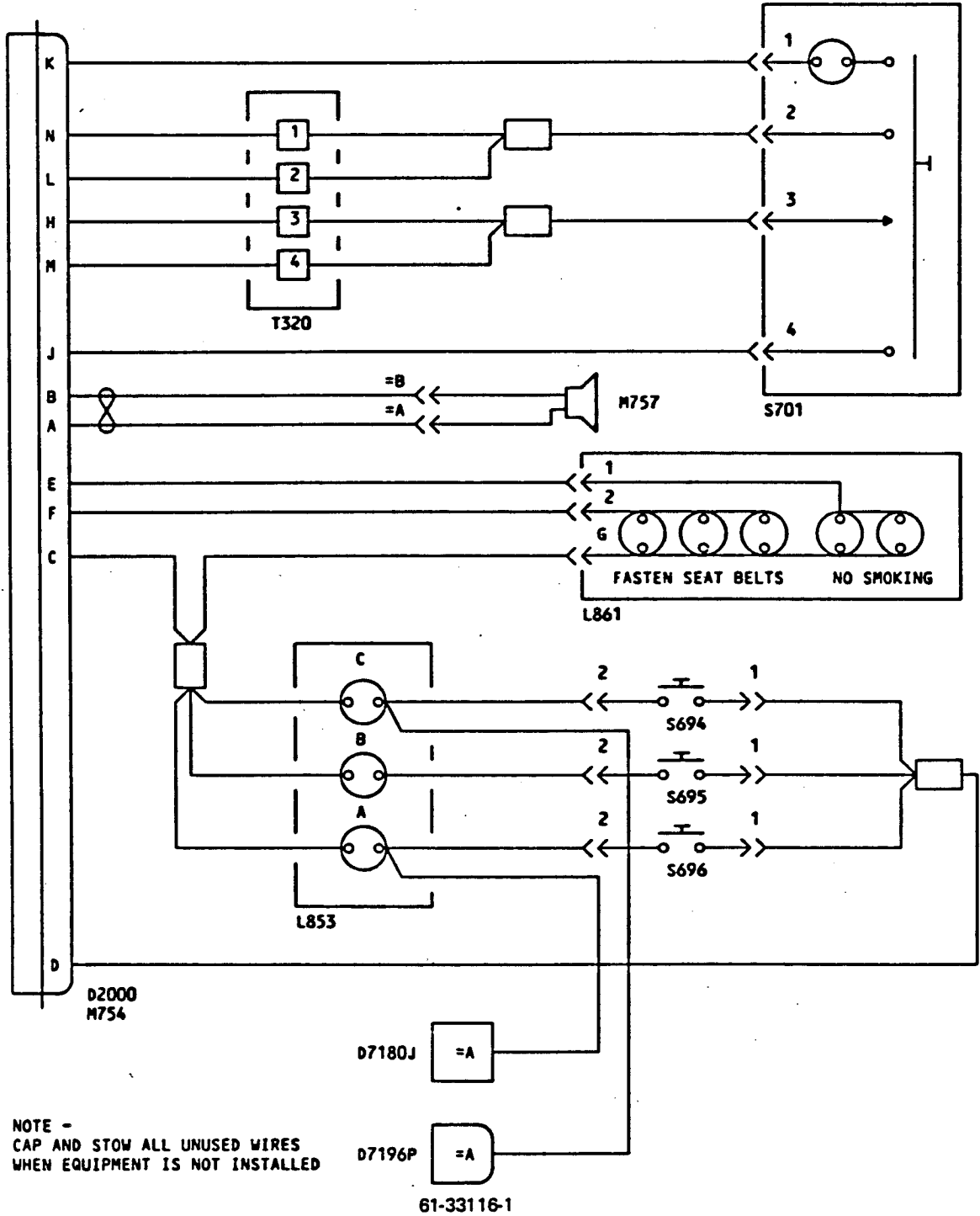


Electrical Schematic
Figure 2 (Sheet 1)



-  CAP & STOW EXISTING WIRES ON PSU ASSY
-  RETERMINATE NEW WIRES AS SHOWN

61-30713-001



NOTE -
CAP AND STOW ALL UNUSED WIRES
WHEN EQUIPMENT IS NOT INSTALLED

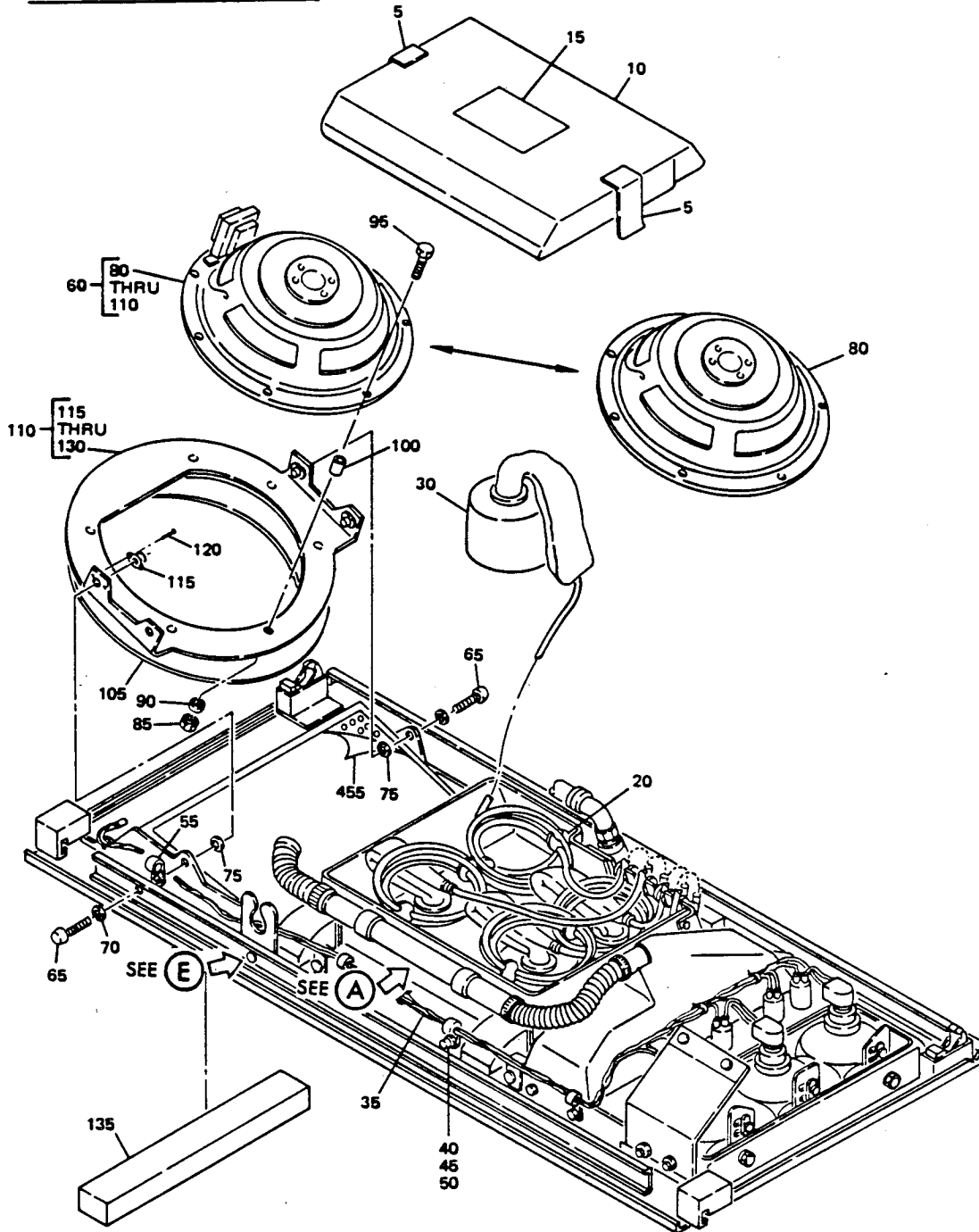
61-33116-1

Schematic Diagram
Figure 2 (Sheet 3)

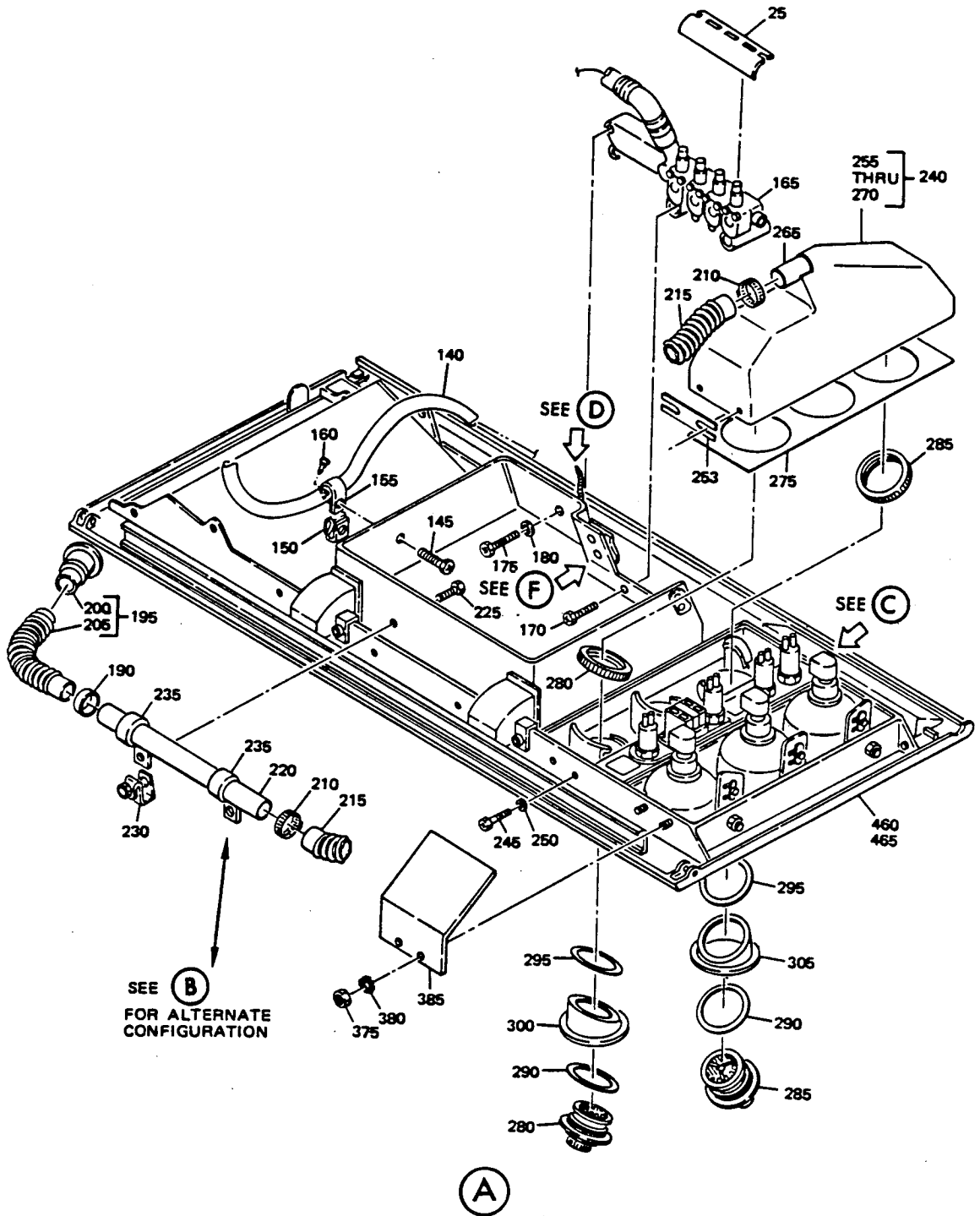
BOEING 
COMMERCIAL JET
OVERHAUL MANUAL

65V10794
DASH NUMBERS LIMITED

3. ILLUSTRATED PARTS LIST



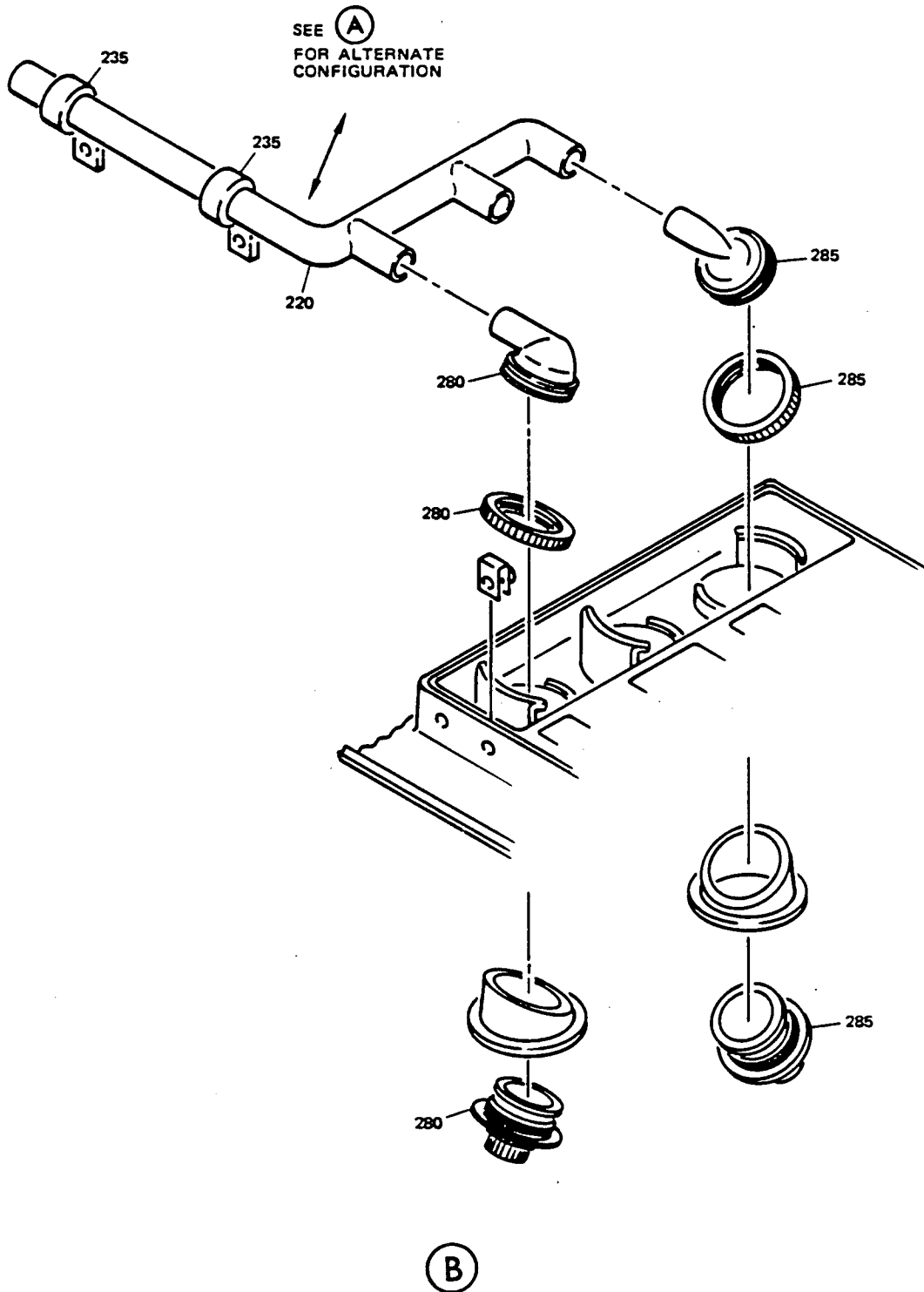
Passenger Service Unit Assembly
Figure 3 (Sheet 1)



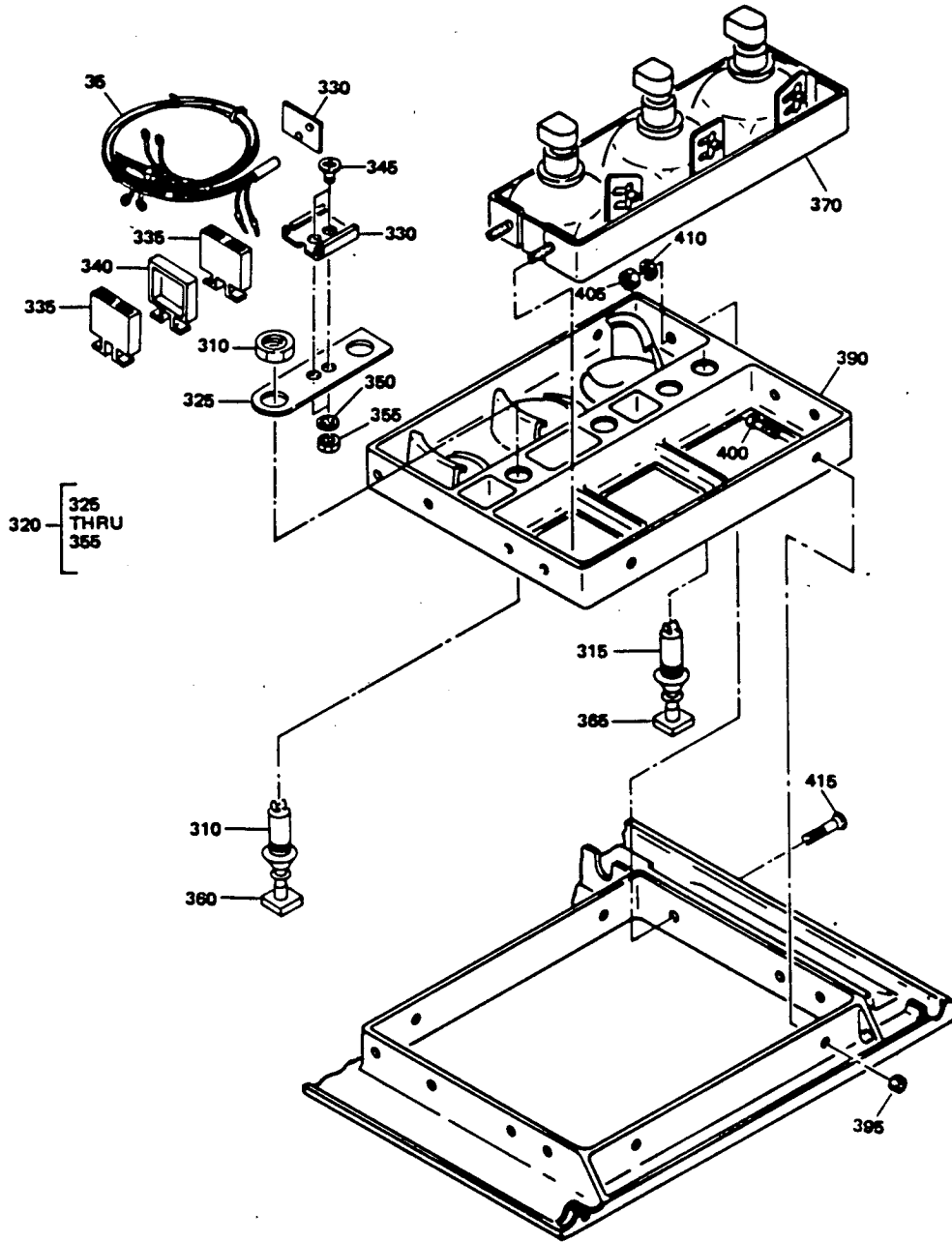
Passenger Service Unit Assembly
Figure 3 (Sheet 2)

BOEING 
COMMERCIAL JET
OVERHAUL MANUAL

65V10794
DASH NUMBERS LIMITED

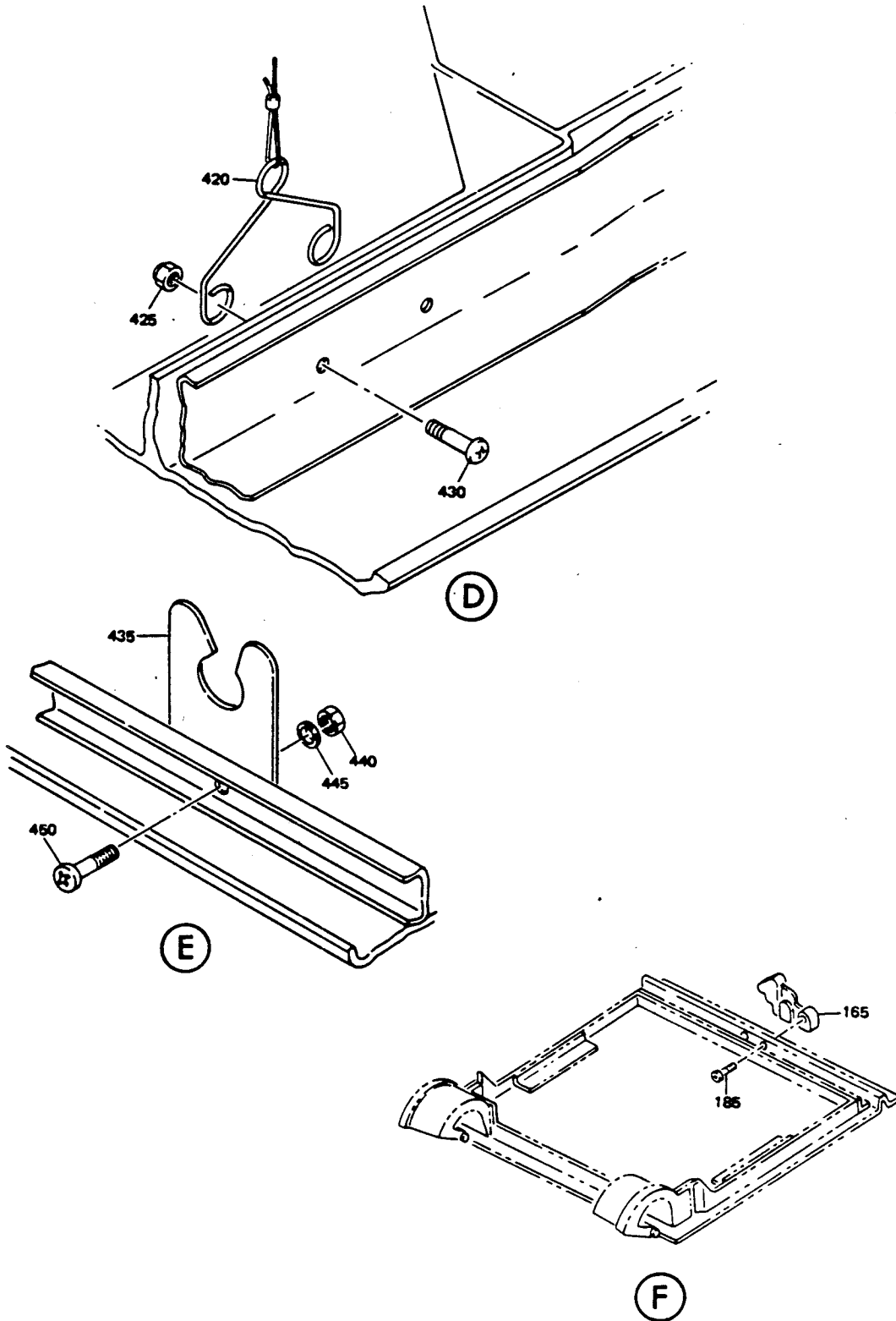


Passenger Service Unit Assembly
Figure 3 (Sheet 3)



(C)

Passenger Service Unit Assembly
Figure 3 (Sheet 4)



Passenger Service Unit Assembly
Figure 3 (Sheet 5)

BOEING 
COMMERCIAL JET
OVERHAUL MANUAL

FIG. & ITEM NO.	PART NO.	AIRLINE PART NUMBER	N O M E N C L A T U R E							USE CODE	QTY PER ASSY
			1	2	3	4	5	6	7		
3-1	65V10794-1		PASSENGER	SERVICE	UNIT	ASSY				A	RF
1	65V10794-2		PASSENGER	SERVICE	UNIT	ASSY				B	RF
1	65V10794-3		PASSENGER	SERVICE	UNIT	ASSY				C	RF
1	65V10794-4		PASSENGER	SERVICE	UNIT	ASSY				D	RF
1	65V10794-5		PASSENGER	SERVICE	UNIT	ASSY				E	RF
1	65V10794-6		PASSENGER	SERVICE	UNIT	ASSY				F	RF
1	65V10794-7		PASSENGER	SERVICE	UNIT	ASSY				G	RF
1	65V10794-8		PASSENGER	SERVICE	UNIT	ASSY				H	RF
1	65V10794-13		PASSENGER	SERVICE	UNIT	ASSY				I	RF
1	65V10794-14		PASSENGER	SERVICE	UNIT	ASSY				J	RF
1	65V10794-15		PASSENGER	SERVICE	UNIT	ASSY				K	RF
1	65V10794-16		PASSENGER	SERVICE	UNIT	ASSY				L	RF
1	65V10794-19		PASSENGER	SERVICE	UNIT	ASSY				M	RF
1	65V10794-20		PASSENGER	SERVICE	UNIT	ASSY				N	RF
1	65V10794-21		PASSENGER	SERVICE	UNIT	ASSY				O	RF
1	65V10794-22		PASSENGER	SERVICE	UNIT	ASSY				P	RF
1	65V10794-25		PASSENGER	SERVICE	UNIT	ASSY				Q	RF
1	65V10794-26		PASSENGER	SERVICE	UNIT	ASSY				R	RF
1	65V10794-27		PASSENGER	SERVICE	UNIT	ASSY				S	RF
1	65V10794-28		PASSENGER	SERVICE	UNIT	ASSY				T	RF
1	65V10794-31		PASSENGER	SERVICE	UNIT	ASSY				U	RF
1	65V10794-32		PASSENGER	SERVICE	UNIT	ASSY				V	RF
5	65-79164-3		. TAPE								2
10	65-80172-7		. COVER, OXYGEN BOX							ACEGI KMOQR SU	1
10	65-80172-8		. COVER, OXYGEN BOX							BDFHJ LNPTV	1
15	BAC27DPA465		. PLACARD								1
20	63-10155		. RETAINER, COIL								8
25	69-64747-1		. GUIDE, TUBE								1
30	289-701-27		. MASK, OXYGEN, v92114 (BOEING 10-60137-49)								4
35	61-33116-1		. BUNDLE, WIRE							A-H	1
35	61-27034-1		. BUNDLE, WIRE							I-LRS T	1
35	61-23100-8		. BUNDLE, WIRE							M-PUV	1
35	61-30713-001		. BUNDLE, WIRE							Q	1
40	BACS12CB08		ATTACHING PARTS								
40	BACS12CB08		. SCREW *[1]							ABEFI JMNR	5
40	BACS12CB08		. SCREW *[1]							CDGHK LOPQ S-V	3

BOEING 
COMMERCIAL JET
OVERHAUL MANUAL

65V10794
DASH NUMBERS LIMITED

FIG. & ITEM NO.	PART NO.	AIRLINE PART NUMBER	N O M E N C L A T U R E							USE CODE	QTY PER ASSY
			1	2	3	4	5	6	7		
3-45	AN960PD10L		.							ABEFI	5
45	AN960PD10L		.							JMNR CDGHK	3
50	BACN10FX84		.							S-V ABEFI	5
50	BACN10FX84		.							JMNR CDGHK	3
55	BACC10DK-()		.							LOPQ S-V	5
60	69-61466-4		.							CDGHK	1
65	NAS601-5P									LOPQ S-V	4
70	AN960PD6L		.							CDGHK	4
75	NAS549-8		.							LOPQ S-V	AR
80	8-3282		.								1
80	C8TS-C8800		.								1
85	BACN10JC3		.								7
90	AN960C10L		.								7
95	NAS514P1032-10		.								7
100	NAS43DD3-16		.								7
105	65-61466-3		.								AR
110	69-62320-1		.								1
115	NAS1068A06L		.								4
120	BACR15BA3D		.								8
125	BACN10FX61		.								4
130	69-62320-2		.								1

BOEING 
COMMERCIAL JET
OVERHAUL MANUAL

FIG. & ITEM NO.	PART NO.	AIRLINE PART NUMBER	N O M E N C L A T U R E							USE CODE	QTY PER ASSY
			1	2	3	4	5	6	7		
3-135	80000095-1		.								1
140	ZH833-39		.							A-H	1
140	37001-39		.							M-Q	
140	ZH833-40		.							A-H	1
140	37001-40		.							M-Q	
145	NAS602-8P		.							I-L	1
150	BACN10FX83		.							RST	
155	BACC10DK7		.							I-LR	1
160	BACP20BAL		.							S-V	
165	115013-01		.								
165	115013-02		.								
170	BACS12CB3-22		.								
170	NAS603-22P		.								
175	BACS12CB3-20		.								
175	NAS603-20P		.								
180	MS35335-32		.								
185	BACS12CB04-9		.								
190	MS3367-4-9		.								
190	6203		.								
195	69-68932-1		.								
200	69-64738-1		.								
205	BE406-3		.								
205	AD604-3		.								
210	6203		.								
215	BACD40B3-32-3		.								
220	*[3]		.								

BOEING 
COMMERCIAL JET
OVERHAUL MANUAL

65V10794
DASH NUMBERS LIMITED

FIG. & ITEM NO.	PART NO.	AIRLINE PART NUMBER	N O M E N C L A T U R E							USE CODE	QTY PER ASSY			
			1	2	3	4	5	6	7					
3-220	69-62660-2		.	M	A	N	I	F	O	L	D	E-HRS T	1	
				A	T	T	A	C	H	I	N			
225	NAS602-8P		.	S	C	R	E	W					2	
230	BACN10FX83		.	C	L	I	P	N	U	T			2	
235	BACCL0DKL2		.	C	L	A	M	P					2	
				-----*-----										
240	65V10794-101		.	P	L	E	N	U	M	A	S	A	A	1
				A	T	T	A	C	H	I	N			
245	BACSL2CB06-8		.	S	C	R	E	W				A-D I-QUV	4	
250	AN960PD6L		.	W	A	S	H	E	R			A-D I-QUV	4	
253	65V10794-106		.	S	H	I	M					A-D I-QUV	2	
				-----*-----										
-255	BACN10JP06B		.	N	U	T	P	L	A	T	E		4	
				A	T	T	A	C	H	I	N			
-260	BACR15BB3D		.	R	I	V	E	T					8	
				-----*-----										
265	65-80172-2		.	T	U	B	E						1	
270	65-80172-9		.	P	L	E	N	U	M				1	
275	65V10794-105		.	G	A	S	K	E	T			A-D I-QUV	1	
280	L16999-15C		.	O	U	T	L	E	T	, A	I	R	, V17744 (BOEING 10-60141-18) *[4]	2
285	L20646-1C		.	O	U	T	L	E	T	, A	I	R	, V17744 (BOEING 10-60141-19) *[4]	1
290	65V10794-103		.	G	A	S	K	E	T			A-D I-QUV	3	
295	65V10794-102		.	G	A	S	K	E	T			A-D I-QUV	3	
300	65-79165-31		.	C	O	N	E	, A	I	R			2	
305	65-79165-32		.	C	O	N	E	, A	I	R			1	
310	710907-13A2		.	S	W	I	T	C	H	, L	I	G	H	3
315	710906-13A1		.	S	W	I	T	C	H	, C	A	L	L	1
320	69-65298-1		.	B	L	O	C	K	A	S	S	Y	, T	1
325	69-65258-1		.	B	A	S	E						1	
330	AMY0110T-8		.	B	O	T	T	O	M	A	N	D	K	1
				(2 P I E C E S)										
335	BACM15CLA		.	C	O	N	N	E	C	T	O	R		2

BOEING 
COMMERCIAL JET
OVERHAUL MANUAL

FIG. & ITEM NO.	PART NO.	AIRLINE PART NUMBER	N O M E N C L A T U R E							USE CODE	QTY PER ASSY
			1	2	3	4	5	6	7		
3-											
340	YHLZ1C-8										1
345	BACR15DA6-2										2
345	NAS602-7										2
350	AN960PD8L										2
355	BACN1QJC08										2
360	691212-13A1-1										3
365	690623-A1-4								A-T		1
365	65-79164-158										
365	93250LXXX								UV		1
370	10-0429-1								ACEGI		1
									KMOQR		
									SU		
370	10-0429-2								BDFHJ		1
									LNPTV		
375	MS35649-282										4
380	MS35335-31										4
385	69-65414-1										1
390	65-79165-5								ACEGI		1
									KMOQR		
									SU		
390	65-79165-6								BDFHJ		1
									LNPTV		
395	BACN1QJC08										4
400	NAS514P832-5P										4
405	BACN1QJC06										1
410	AN960PD6L										1
415	NAS601-8P										1
420	69-63824-1										1
425	BACN1QJC08										2
430	NAS602-4P										2
435	69-64747-2										1
440	BACN1QJC08										1
440	BACN10FX84										1
445	AN960PD8L										1
450	NAS602-7										1
450	NAS602-8P										1
455	65-79164-79										1

OVERHAUL MANUAL

FIG. & ITEM NO.	PART NO.	AIRLINE PART NUMBER	N O M E N C L A T U R E							USE CODE	QTY PER ASSY	
			1	2	3	4	5	6	7			
3-460	65-79164-137		.	B	A	S	S				ACEGI KMOQR SU	1
460	65-79164-138		.	B	A	S	S				BDFHJ LNPTV	1
465	65-79165-61		.	.	S	H	E	L	L		ACEGI KMOQR SU	1
470	65-79165-62		.	.	S	H	E	L	L		BDFHJ LNPTV	1

- ITEM NOT ILLUSTRATED

*[1] LENGTH AS REQUIRED

*[2] SIZE TO FIT

*[3] NO BOEING PART NUMBER ASSIGNED. REWORKED FROM 69-62660-2

*[4] REMOVE BOOT AND CLAMP, IF ATTACHED, ON ASSYS WITH FLENUM ASSY (240).

REFERENCE DESIGNATION INDEX *[5]		
REFERENCE DESIGNATION	PART NUMBER	ITEM NO. FIG. 3
D3100 D4714 D2000	67-907 *[6]	
L3000 L1740 L853	10-0429-1	370
L3001 L1740 L853	10-0429-2	370
L3002 L1714 L861	800 000 095-1	135
M3001 M867 M757	8-3282	80
M3001 M867 M757	C8TS-C8800	80
S3000 S1203 S701	710906-13A1	315
S3001 S1197 S696	710907-13A2	310
S3002 S1198 S695	710907-13A2	310
S3003 S1175 S694	710907-13A2	310
T3000 T927 T320	69-65298-1	320
D7005P D7289 D7196P	48-7190 *[6]	
D7007J D7326 D7180J		

*[5] REFER TO 25-20-00 FOR 61-23100-8 WIRE BUNDLE SCHEMATIC. REFER TO FIG. 2 FOR 61-27034, 61-30713 AND 61-33116 SCHEMATIC.

*[6] BUNKER-RAMO CORP., CONNECTOR DIV., 2801 S. 25TH AVE., BROADVIEW, ILLINOIS 60153

BOEING 
COMMERCIAL JET
OVERHAUL MANUAL

VENDORS

- | V02217 PURITAN-BENNET AEROSYSTEMS DIV., 111 PENN ST., EL SEGUNDO, CALIFORNIA
90245
- V05399 BEMCO INC., P.O. BOX 68, CENTERTON, ARKANSAS 72719
- | V05617 BELL INDUSTRIES, FARWEST MFG. DIV., 12410 S.E. 32ND ST., BELLEVUE,
WASHINGTON 98005
- V09922 BURNDY CORP., RICHARDS AVE., NORWALK, CONNECTICUT 06852
- V16827 PURITAN EQUIPMENT INC., 10800 PFLUMM RD., LENEXA, KANSAS 66210
- V17744 LUMINATOR DIV., GULTON INDUSTRIES INC., 1200 E. DALLAS N. PARKWAY,
PLANO, TEXAS 75074
- V21868 H.K. PORTER CO. INC., THERMOID DIV., GOVERNMENT SALES OFFICE, 601
GRANT ST., 1627 PORTER BLDG., PITTSBURGH, PENNSYLVANIA 15219
- V24984 HYDRAFLOW SUPPLY INC., 5341 SHEILA ST., LOS ANGELES, CALIFORNIA 90040
- V26234 CTS OF PADUCAH INC., 1565 N. 8TH ST., PADUCAH, KENTUCKY 42001
- | V32001 PEMCOR INC., JENSEN SOUND LABORATORY, 43100 TRANSWORLD RD., SCHILLER
PARK, ILLINOIS 60176
- V72914 GRIMES MFG. CO., 515 N. RUSSELL, URBANA, OHIO 43078
- V81646 IDEAL CORP., SUBSIDIARY OF PARKER-HANNIFIN CORP., 1000 PENNSYLVANIA
AVE., BROOKLYN, NEW YORK 11207
- V92114 SIERRA ENGINEERING CO. DIV. OF CAPTECH, INC., 123 E. MONTECITO AVE.,
SIERRA MADRE, CALIFORNIA 91024
- V97564 CLARE-PENDAR INC., P.O. BOX 785, POST FALLS, IDAHO 83854