

OVERHAUL MANUAL

TO: ALL HOLDERS OF PARTIAL SECTIONS PASSENGER SERVICE UNIT ASSEMBLY OVERHAUL  
 MANUAL, 25-21-15

REVISION NO. 4, DATED MAR 5/77

HIGHLIGHTS

DESCRIPTION OF CHANGE	TOPICS AFFECTED												
	D & O	D/Assy	Cleaning	Insp/Chk	Repair	Assy	F/C	Test	T/Shooting	S/Tools	Storage	IPL	L/Overhaul
Added new top assemblies 65V10794-30, -38, -401					X							X	

**BOEING**   
**COMMERCIAL JET**  
**OVERHAUL MANUAL**

**PARTIAL SECTIONS PASSENGER SERVICE UNIT  
ASSEMBLY  
25-21-15**

BOEING P/N 65V10794-9, -10, -11, -17, -18, -23, -24, -29, -30, -33, -34,  
-38, -301, -302, -401

AIRLINE P/N

---

---

THE FOLLOWING DIRECTIVES APPLY TO THIS SUBJECT:

BOEING SERVICE BULLETIN	BOEING TEMPORARY REVISION	OTHER DIRECTIVES	DATE DIRECTIVE INCORPORATED INTO TEXT

**BOEING**   
**COMMERCIAL JET**  
**OVERHAUL MANUAL**

LIST OF EFFECTIVE PAGES					
* Indicates pages revised, added or deleted in latest revision					
F Indicates foldout pages - print one side only					
PAGE	DATE	PAGE	DATE	PAGE	DATE
25-21-15		35	Apr 5/77		
* T-1	Mar 5/78	* 36	Mar 5/78		
T-2	BLANK	* 37	Mar 5/78		
* LEP-1	Mar 5/78	* 38	Mar 5/78		
LEP-2	BLANK	* 39	Mar 5/78		
T/C-1	Jul 5/76	* 40	Mar 5/78		
T/C-2	BLANK				
1	Apr 5/77				
2	Apr 5/77				
* 2A	Mar 5/78				
2B	BLANK				
3	Jul 5/76				
4	BLANK				
5	Jul 5/76				
6	BLANK				
* 7	Mar 5/78				
* 8	Mar 5/78				
9	BLANK				
* 10	Mar 5/78				
* 10A	Mar 5/78				
* 10B	Mar 5/78				
* 11	Mar 5/78				
* 12	Mar 5/78				
13	Jul 5/76				
14	Apr 5/77				
15	Apr 5/77				
16	Apr 5/77				
17	Apr 5/77				
18	Apr 5/77				
* 19	Mar 5/78				
* 20	Mar 5/78				
* 21	Mar 5/78				
* 22	Mar 5/78				
23	Jul 5/76				
24	Jul 5/76				
25	Jul 5/76				
26	Jul 5/76				
27	Jul 5/76				
* 28	Mar 5/78				
29	Jul 5/76				
30	Jul 5/76				
* 31	Mar 5/78				
* 32	Mar 5/78				
* 33	Mar 5/78				
* 34	Mar 5/78				

**BOEING**   
**COMMERCIAL JET**  
**OVERHAUL MANUAL**

TABLE OF CONTENTS

<u>Paragraph Title</u>	<u>Page</u>
Description and Operation . . . . .	*
Disassembly . . . . .	*
Cleaning. . . . .	*
Inspection/Check. . . . .	*
Repair. . . . .	1
Assembly. . . . .	*
Fits and Clearances . . . . .	None
Testing . . . . .	3
Trouble Shooting. . . . .	*
Storage Instructions. . . . .	*
Special Tools, Fixtures, and Equipment. . . . .	None
Illustrated Parts List. . . . .	7

\*This manual contains only refinish and replacement information, testing for electrical components peculiar to assemblies covered in this manual, and illustrated parts list. All other approved procedures for this unit are in 25-20-00, Passenger Service Unit Overhaul Procedures.

**BOEING**   
**COMMERCIAL JET**  
**OVERHAUL MANUAL**

PARTIAL SECTIONS PASSENGER SERVICE UNIT ASSEMBLY

1. REPAIR

A. Materials

NOTE: Use listed material or equivalent substitute.

- (1) Adhesive -- Type 72 (Ref 20-50-12)
- (2) Lacquer -- Hi-speed (Ref 20-60-02)
- (3) Primer -- EMS 10-11, type 1 (Ref 20-60-02)
- (4) Sealant -- Dow Corning 30-079 clear aerospace adhesive sealant, Dow Corning Corp., S Saginaw Rd., Midland, Michigan 48640
- (5) Tape, white, 1- and 3-inch widths -- P-32 vinyl, Permcel Div., Johnson and Johnson Inc., U.S. Highway 1, New Brunswick, New Jersey 08901

B. Refinish

CAUTION: DO NOT USE HI-SPEED LACQUER TO REFINISH POLYCARBONATE PLASTIC PARTS. IT WILL CAUSE INSTANT DETERIORATION THAT MAY NOT BE VISUALLY DETECTABLE.

NOTE: Refer to 20-30-02 for stripping of protective finishes, and to 20-41-01 for explanation of F and SRF finish codes.

- (1) Mount assembly (125, Fig. 4; 115, Fig. 6) -- Alodize or anodize and prime (SRF-2.30) all over. Material: Alum alloy.
- (2) Heat shield (255, Fig. 5; 205, Fig. 7) -- Apply two coats hi-speed lacquer, BAC711 white (F-14.904-711) all over. Material: Alum alloy.
- (3) Basic PSU assembly (180, Fig. 4; 335, Fig. 5; 210, Fig. 6; 245, Fig. 7) -- Refinish per operator's standard material and color scheme.

C. Replacement

- (1) If replacement of quick-disconnect fitting assembly (120, Fig. 5; 40, Fig. 7) or air duct (125, Fig. 5; 45, Fig. 7) becomes necessary, bond new parts using type 72 adhesive per 20-50-12.
- (2) If replacement of plenum assembly (151, Fig. 5; 55, Fig. 7) or gasket (153, Fig. 5; 95, Fig. 7) becomes necessary, seal around edge of plenum with Dow Corning 30-079 clear aerospace adhesive sealant after assembly.

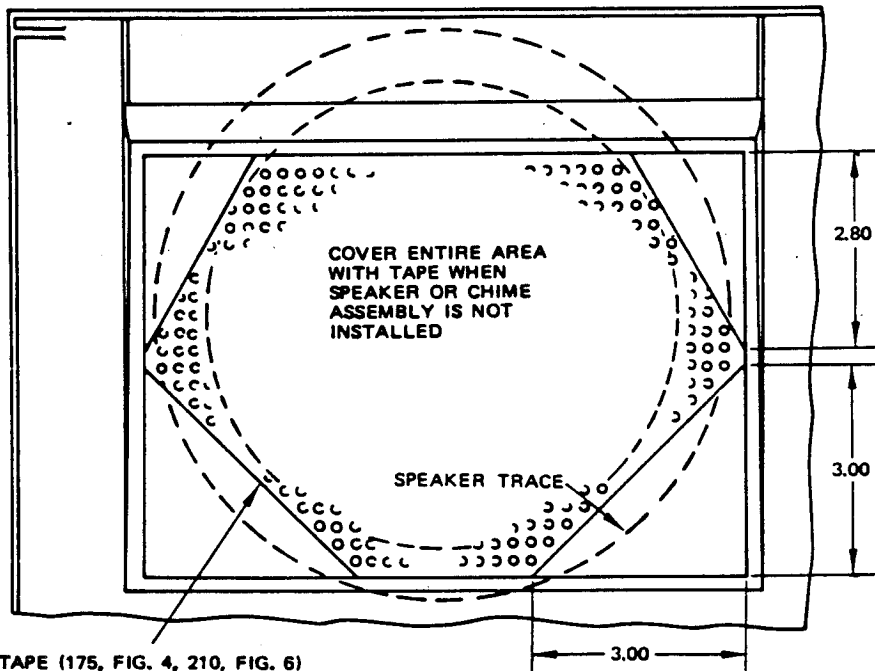
**BOEING**  
**COMMERCIAL JET**  
**OVERHAUL MANUAL**

65V10794  
DASH NUMBERS LIMITED

- (3) If gaskets (162, 163, Fig 5; 110, 115, Fig. 7) need to be replaced, fabricate new part from BMS 1-59, type B, grade 50 silicone rubber sheet 0.016 inch thick, or from class 1, grade 40 white neoprene. Alternatively, if desired, air outlets may be sealed using Dow Corning 30-079 clear aerospace adhesive sealant in place of gaskets (110, 115).

**NOTE:** Sealant must not be visible on outside of air outlet or surrounding surfaces when viewed from cabin interior.

- (4) Replace tape (175, Fig. 4; 205, Fig. 6) if required. Trim tape per Fig. 1 on units having speaker assemblies installed.
- (a) Paint speaker grille face after tape is applied, per applicable color code, to cover tape adhesive exposed through speaker grille holes.



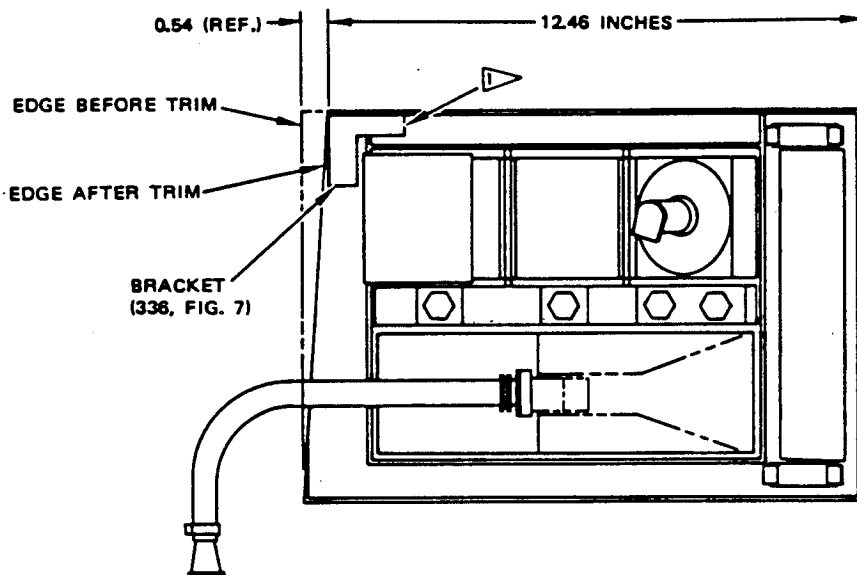
TAPE (175, FIG. 4, 210, FIG. 6)  
TRIMMED FOR SPEAKER ASSEMBLY  
INSTALLATION. TRIM TAPE TO FIT  
LOWER SURFACE OF CHIME  
ASSEMBLY

ALL DIMENSIONS ARE IN INCHES

Tape Application  
Figure 1

**BOEING**   
**COMMERCIAL JET**  
**OVERHAUL MANUAL**

- (5) When replacing 65-86412-6 shell assy (245, Fig. 7) on the 65V10794-38 assy only, trim shell per Fig. 1.B. Bond angle bracket (336) to shell per 20-50-12 type 70.

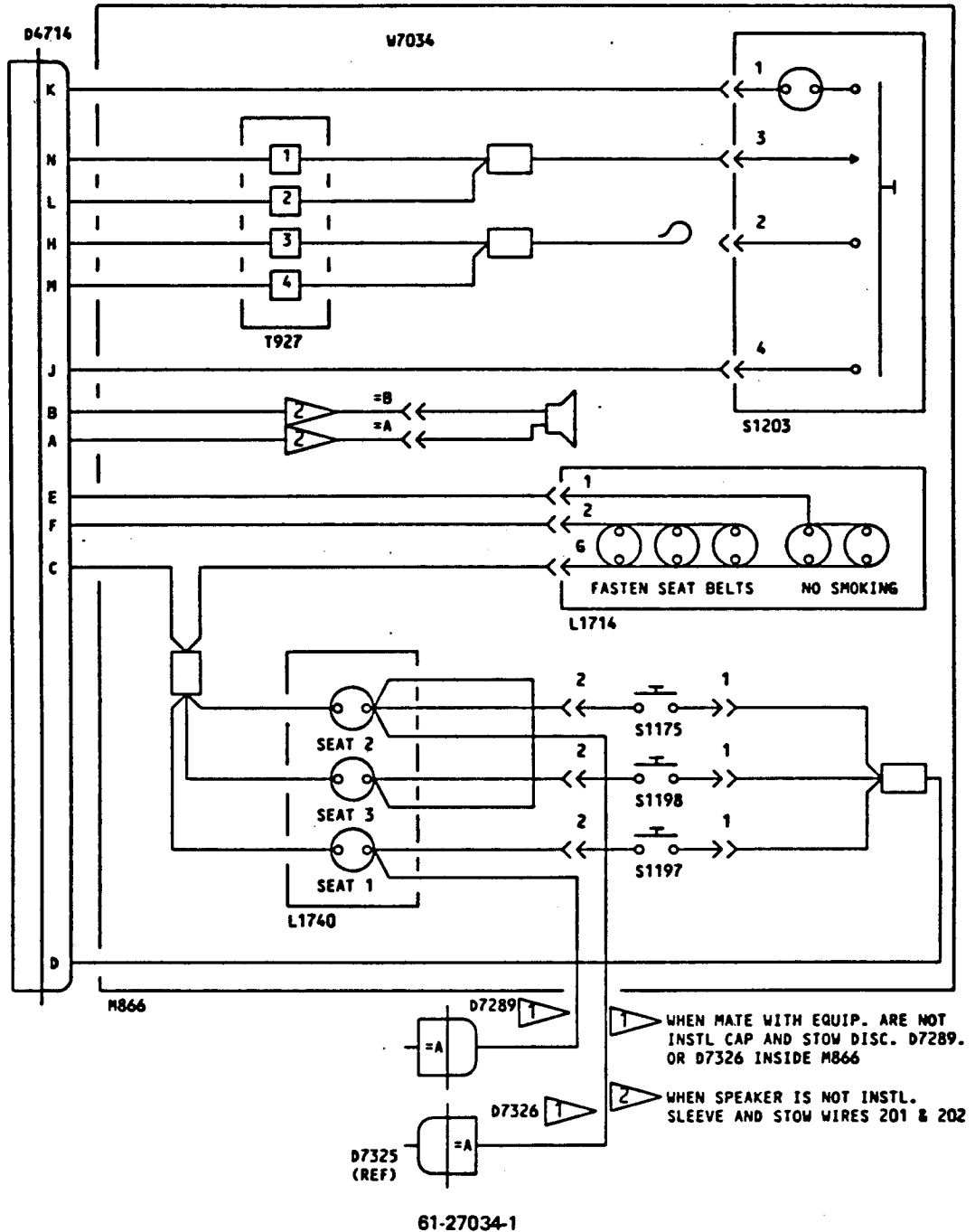


 TRIM AREA FLUSH UNDER  
BRACKET (336, FIG. 7)  
BOND BRACKET TO SHELL  
PER 20-50-12 TYPE 70.

TRIM OFF 65-86412-6 SHELL ASSY (245, FIG. 7)  
TO SUIT 65V10794-38 ASSEMBLY REQUIREMENTS

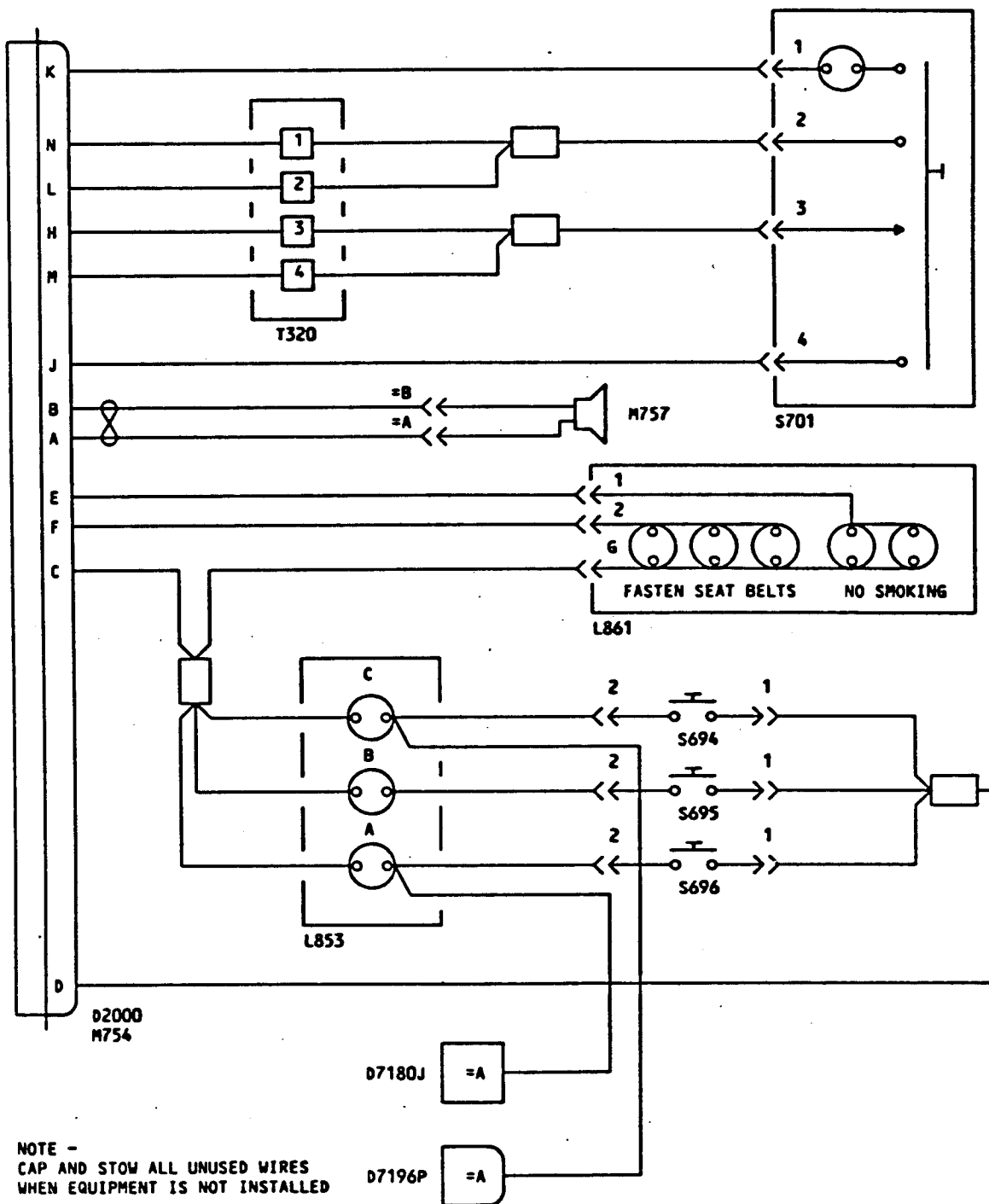
2. TESTING

- A. Test electrical circuits of assemblies with wire bundle 61-23100-2, -5 or -8 per applicable schematic of 25-20-00. Test electrical circuits of assemblies with wire bundle 61-27034-1 or 61-33116-1 per Fig. 2.



Schematic Diagram  
Figure 2 (Sheet 1)



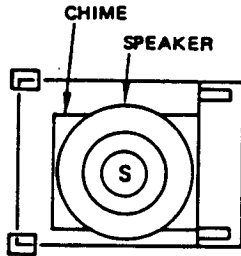


NOTE -  
CAP AND STOW ALL UNUSED WIRES  
WHEN EQUIPMENT IS NOT INSTALLED

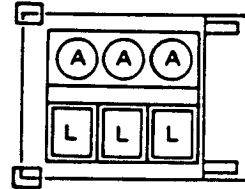
61-33116-1

Schematic Diagram  
Figure 2 (Sheet 2)

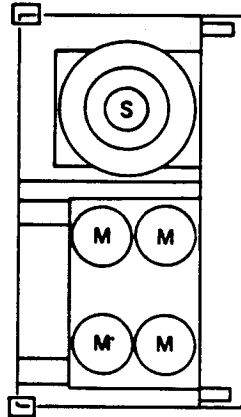
3. ILLUSTRATED PARTS LIST



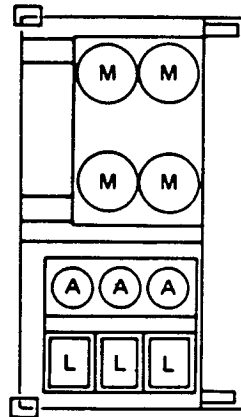
65V10794-9, -10, -17, -401



65V10794-23, -24, -38,  
-301, -302



65V10794-18



65V10794-11, -29, -30, -33, -34

Partial Sections Passenger Service Unit Assembly  
Figure 3

**BOEING**   
**COMMERCIAL JET**  
**OVERHAUL MANUAL**

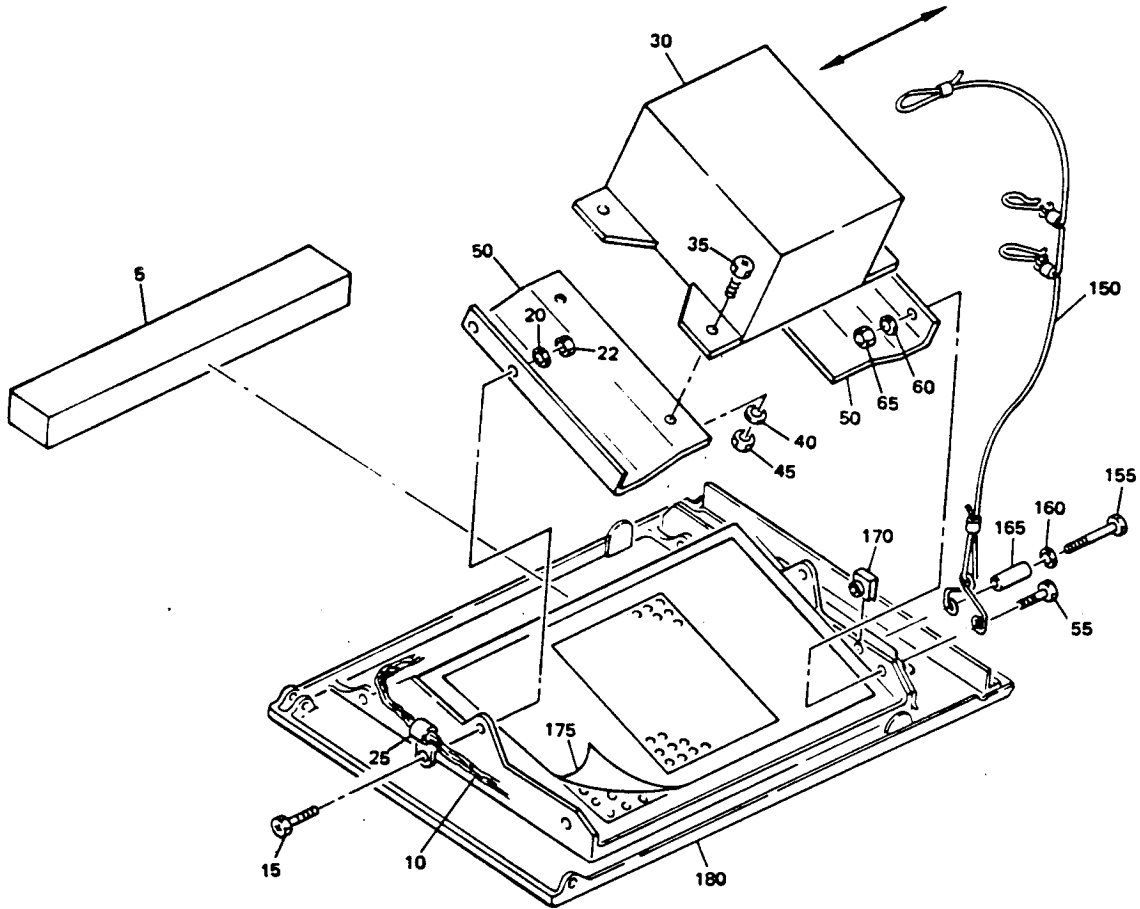
65V10794  
DASH NUMBERS LIMITED

FIG. & ITEM NO.	PART NO.	AIRLINE PART NUMBER	N O M E N C L A T U R E							USE CODE	QTY PER ASSY
			1	2	3	4	5	6	7		
3-1	65V10794-9										RF
1	65V10794-10										RF
1	65V10794-11										RF
1	65V10794-17										RF
1	65V10794-18										RF
1	65V10794-23										RF
1	65V10794-24										RF
1	65V10794-29										RF
1	65V10794-30										RF
1	65-10794-33										RF
1	65-10794-34										RF
1	65V10794-38										RF
1	65V10794-301										RF
1	65V10794-302										RF
1	65V10794-401										RF

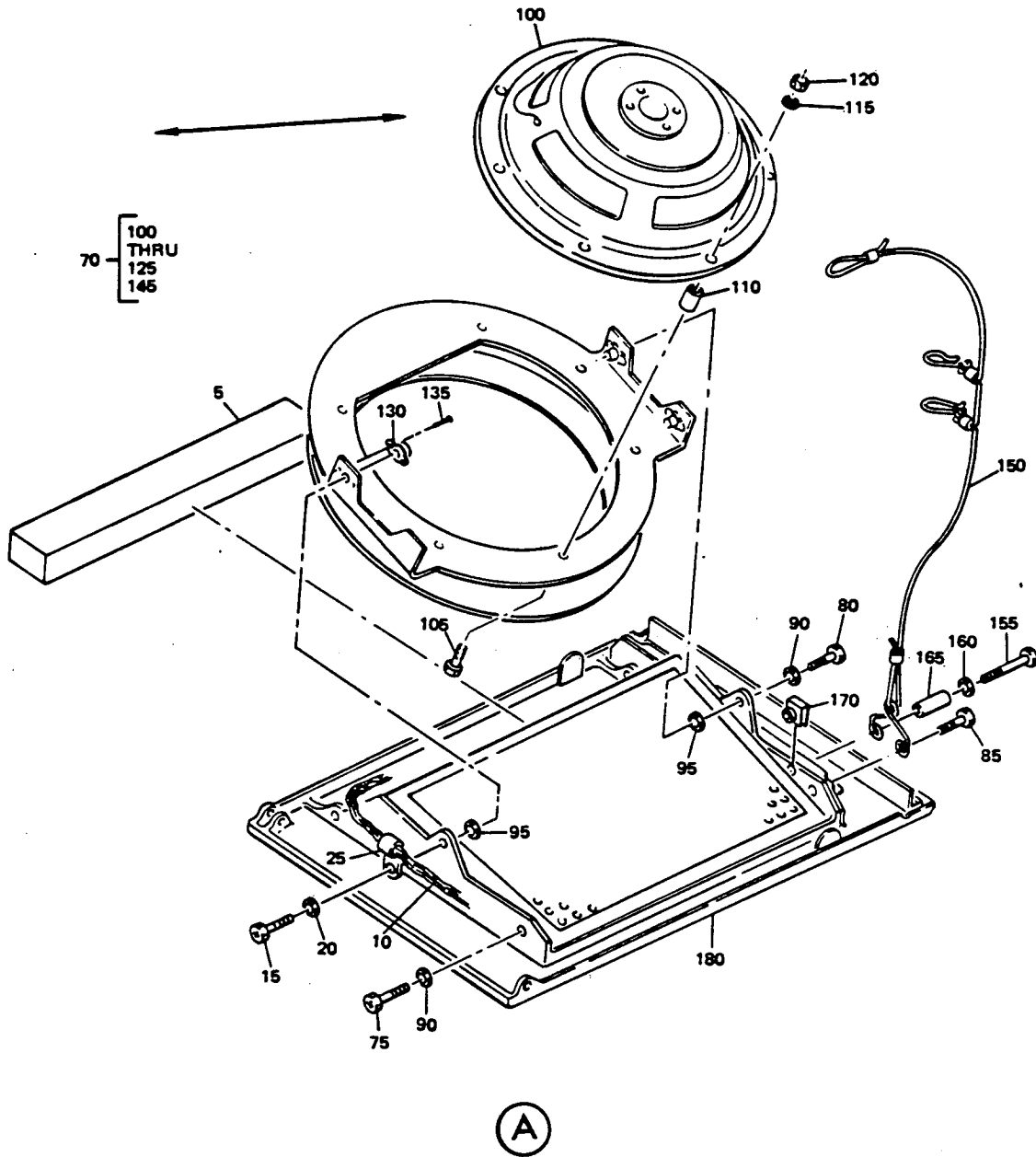
**BOEING**   
**COMMERCIAL JET**  
**OVERHAUL MANUAL**

65V10794  
DASH NUMBERS LIMITED

SEE (A) OR (B) FOR  
ALTERNATE CONFIGURATIONS

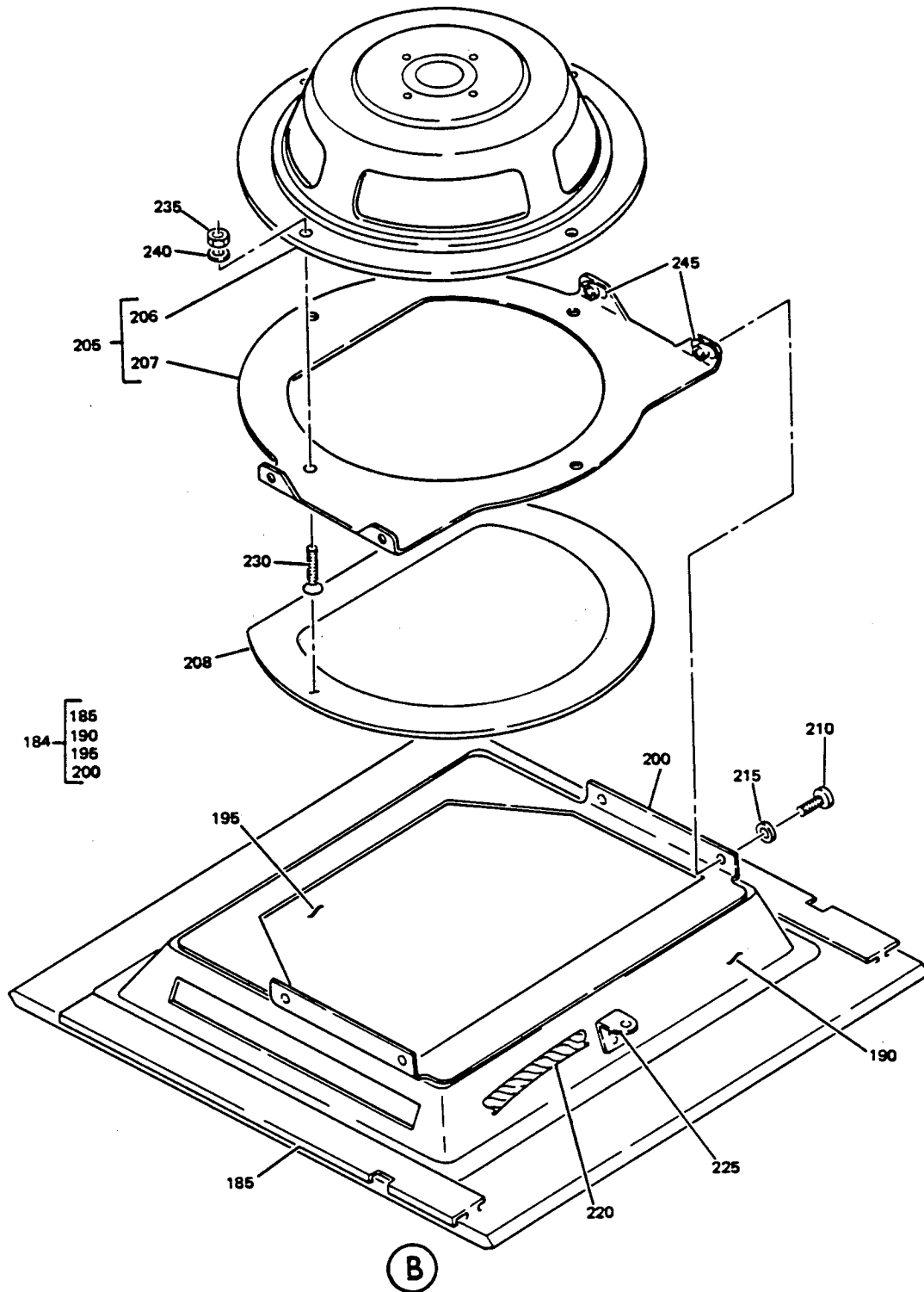


Partial Sections Passenger Service Unit Assembly  
Figure 4 (Sheet 1)



Mar 5/78

Partial Sections Passenger Service Unit Assembly  
Figure 4 (Sheet 2)



Partial Sections Passenger Service Unit Assembly  
Figure 4 (Sheet 3)

Mar 5/78

**BOEING**   
**COMMERCIAL JET**  
**OVERHAUL MANUAL**

FIG. & ITEM NO.	PART NO.	AIRLINE PART NUMBER	N O M E N C L A T U R E							USE CODE	QTY PER ASSY
			1	2	3	4	5	6	7		
4-											
1	65V10794-9									A	RF
1	65V10794-10									B	RF
1	65V10794-17									C	RF
1	65V10794-401									D	RF
5	800000095-1										1
10	61-23100-8									AB	1
10	61-27034 1									C	1
15	BACS12CB06-5									AB	1
15	BACS12CB06-7P									C	1
20	AN96OPD6									AB	1
20	AN96OPD6L									C	1
22	BACN1OJC06									AB	1
25	BACC1ODK-( )									C	1
30	75101-5									AB	1
35	BACS12CB06-5									AB	4
40	AN96OPD6									AB	4
45	BACN1OJC06									AB	4
50	65V10794-104									AB	2
55	BACS12CB06-5									AB	3
60	AN96OPD6									AB	3
65	BACN1OJC06									AB	3
70	*[2]									C	1
75	BACS12CB06-7P									C	1
80	BACS12CB06-6P									C	1
85	NAS601-8P									C	1
90	AN96OPD6L									C	3
95	NAS549-8									C	4
100	8AC3										1
105	NAS514P1032										7

**BOEING**   
**COMMERCIAL JET**  
**OVERHAUL MANUAL**

65V10794  
DASH NUMBERS LIMITED

FIG. & ITEM NO.	PART NO.	AIRLINE PART NUMBER	N O M E N C L A T U R E							USE CODE	QTY PER ASSY
			1	2	3	4	5	6	7		
4-											
110	NAS43DD3-16										7
115	AN960C10L										7
120	BACN10JC3										7
125	69-62320-1										1
130	NAS1068A08										4
135	BACR15BA3D										8
140	69-62320-2										1
145	65-61466-3										1
150	69-63824-1										1
155	BACSI2CB08-20P										1
160	AN960D8L										1
165	NAS42DD6-48										1
170	BACN10FX84										1
175	65-86413-26										AR
180	65-86412-1								AC		1
180	65-86412-2								B		1
184	NO BOEING P/N								D		1
185	65V10794-402								D		1
190	65V10794-403								D		1
195	65V10794-404								D		1
200	65V10794-405								D		1
205	69-61466-5								D		1
206	8-3282										1
206	C8TS-C8800										1
207	69-62320-1										1
208	69-61466-5										4
210	NAS601-5P								D		4
215	AN960PD6L								D		4
220	61-33120-001								D		1
225	AN743-13								D		1
230	NAS514P1032-10										4
235	BACN10JC3										4
240	AN960C10L										4
245	NAS1068A06L										4

\*[1] SIZE TO FIT WIRE BUNDLE

\*[2] NO BOEING PART NUMBER ASSIGNED. IDENTICAL TO 69-61466-4 EXCEPT FOR SPEAKER



**BOEING**   
**COMMERCIAL JET**  
**OVERHAUL MANUAL**

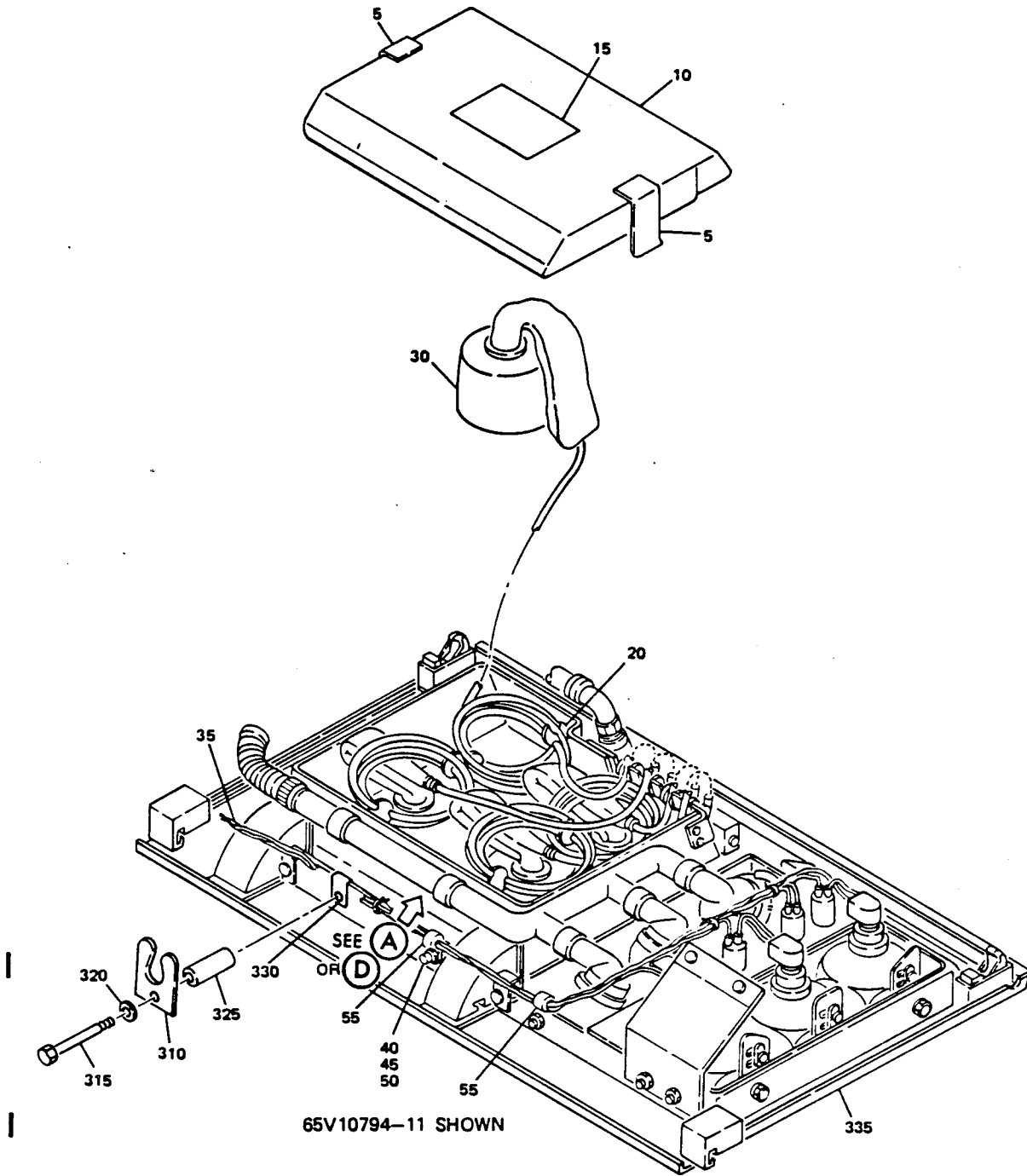
REFERENCE DESIGNATION INDEX *[3]		
REFERENCE DESIGNATION	PART NUMBER	ITEM NO. FIG. 4
D4714 L1714 M867 D7289 D7326	67-907 *[4] 800000095-1 8AC3 48-7190 *[4] 48-7191 *[4]	5 100

\*[3] REFER TO 25-20-00 FOR 61-23100-8 WIRE BUNDLE SCHEMATIC. REFER TO FIG. 2 FOR 61-27034-1 SCHEMATIC.

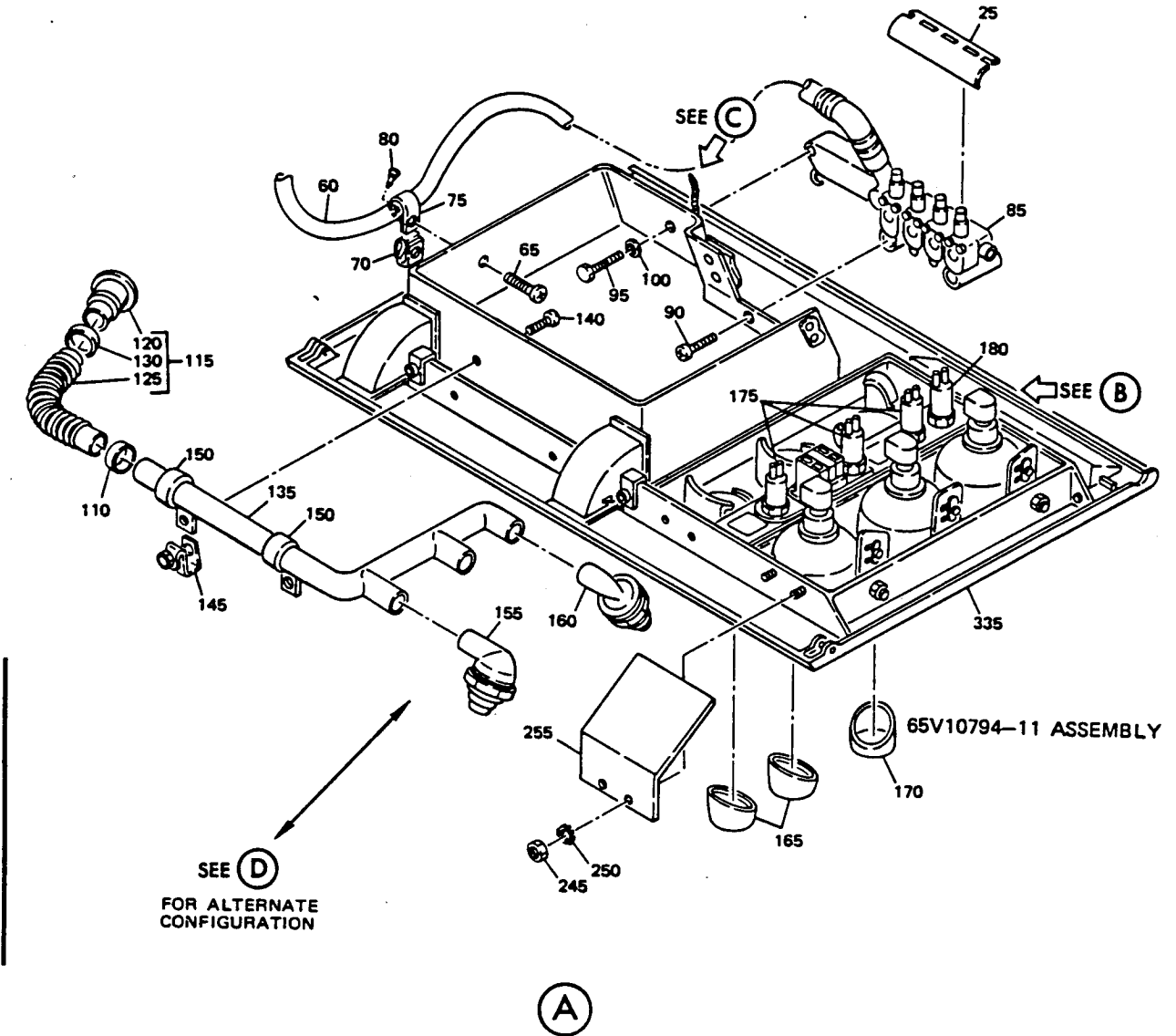
\*[4] BUNKER-RAMO CORP., CONNECTOR DIV., 2801 S. 25TH AVE., BROADVIEW, ILLINOIS 60153

**BOEING**   
**COMMERCIAL JET**  
**OVERHAUL MANUAL**

65V10794  
 DASH NUMBERS LIMITED

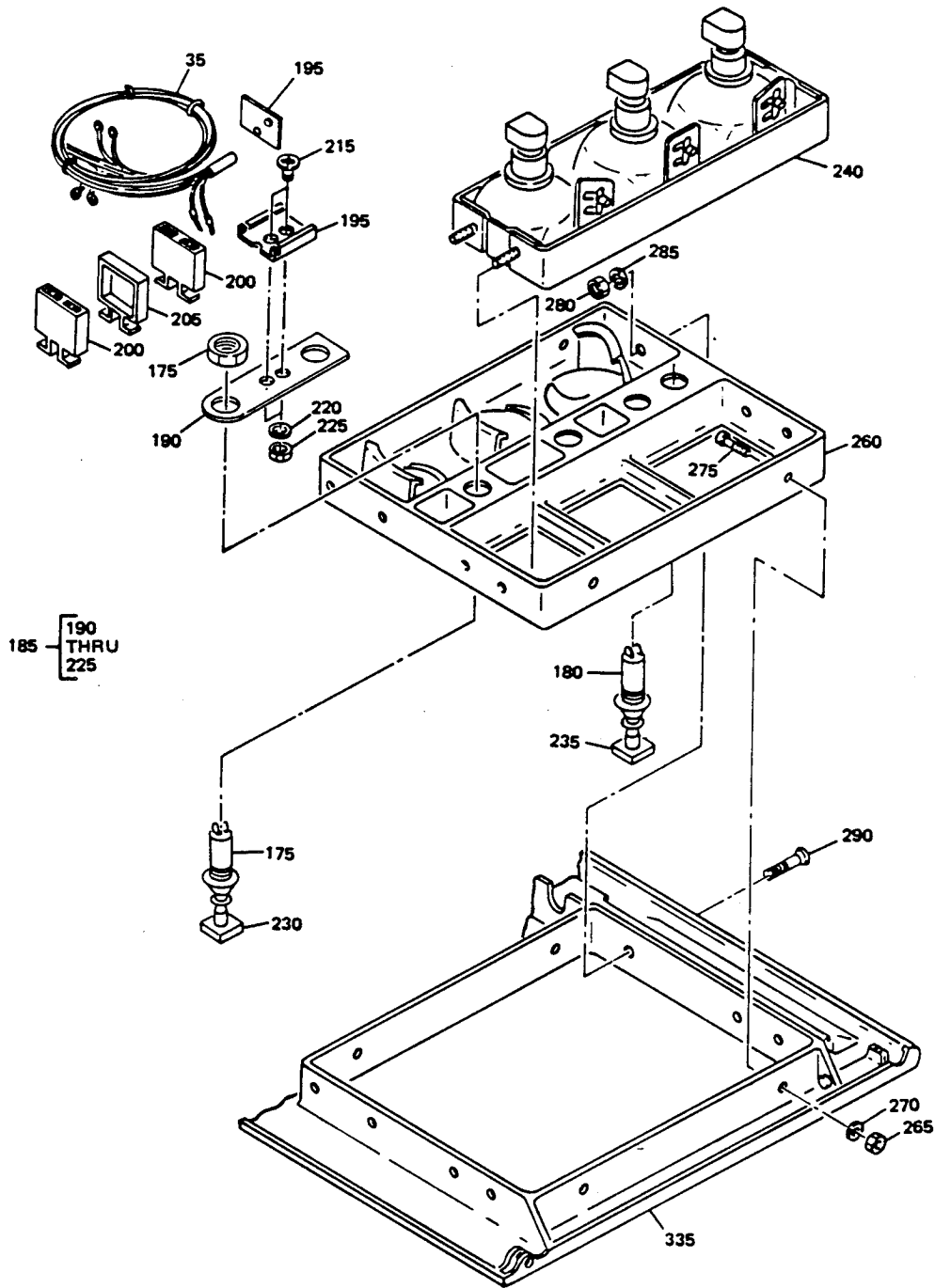


Partial Sections Passenger Service Unit Assembly  
 Figure 5 (Sheet 1)



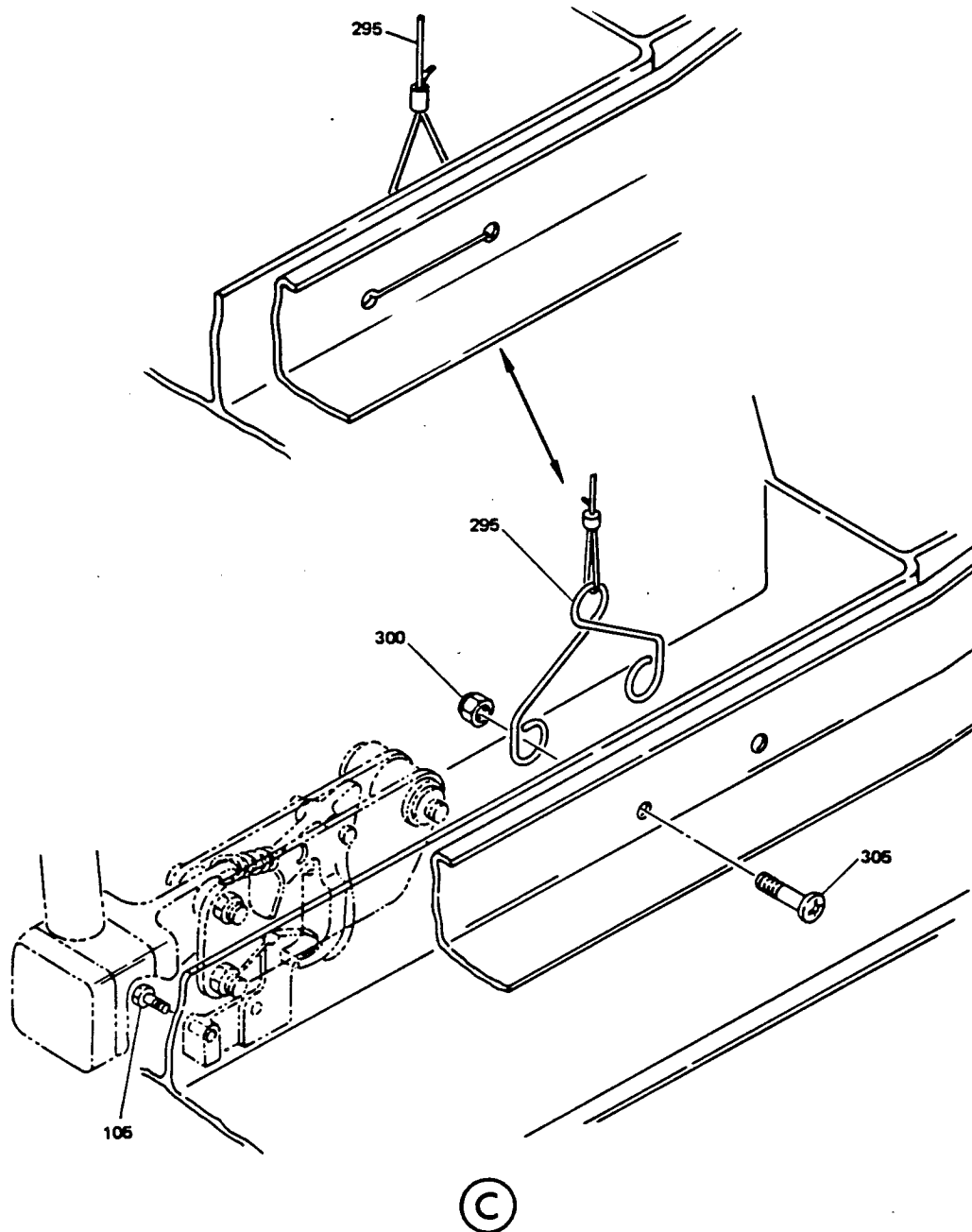
Apr 5/77

Partial Sections Passenger Service Unit Assembly  
Figure 5 (Sheet 2)



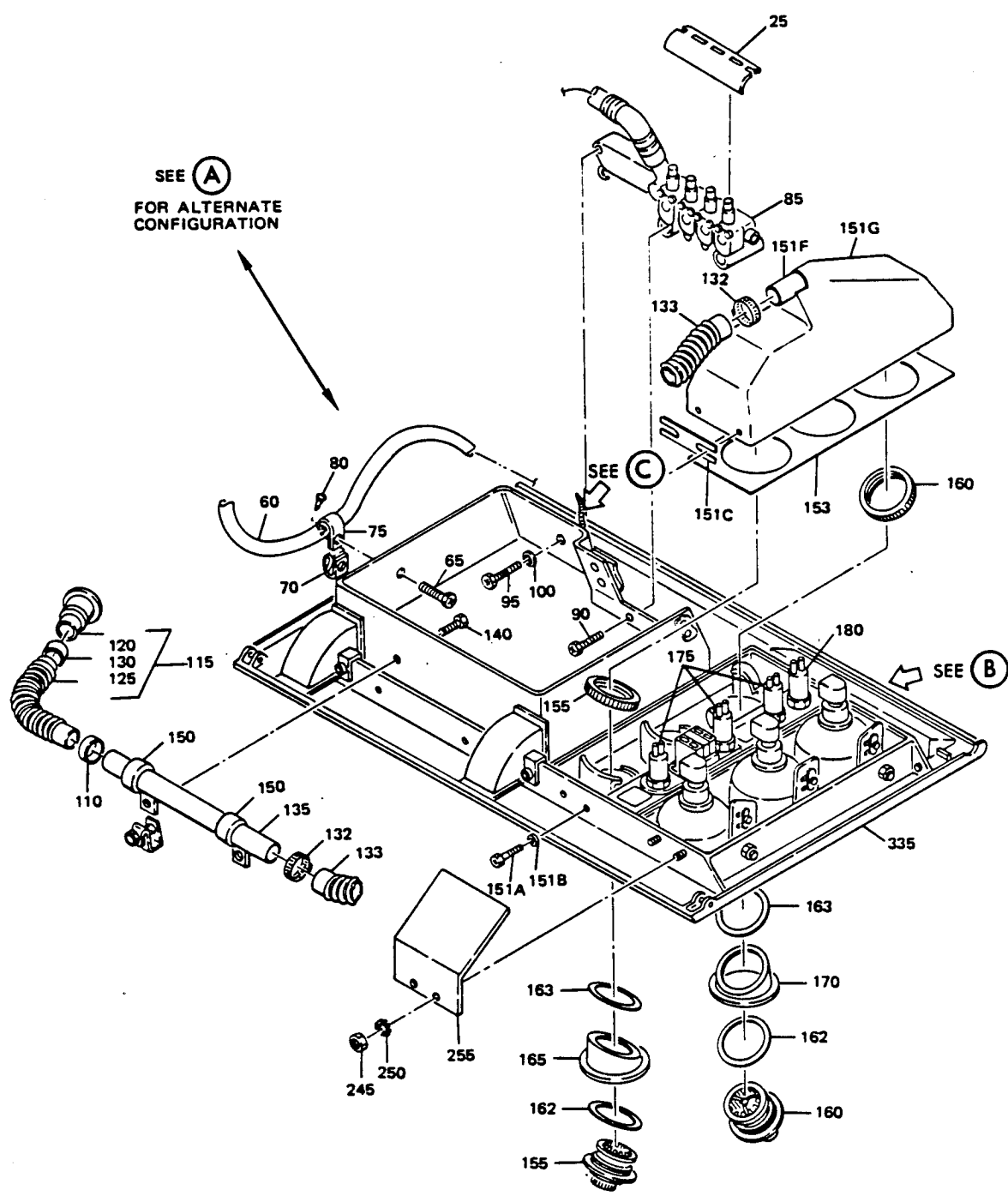
(B)

Partial Sections Passenger Service Unit Assembly  
 Figure 5 (Sheet 3)



Apr 5/77

Partial Sections Passenger Service Unit Assembly  
Figure 5 (Sheet 4)



65V10794-29, -33, -34 ASSEMBLIES

**(D)**

Partial Sections Passenger Service Unit Assembly  
 Figure 5 (Sheet 5)

**BOEING**   
**COMMERCIAL JET**  
**OVERHAUL MANUAL**

FIG. & ITEM NO.	PART NO.	AIRLINE PART NUMBER	N O M E N C L A T U R E							USE CODE	QTY PER ASSY
			1	2	3	4	5	6	7		
5-											
1	65V10794-11									A	RF
1	65V10794-29									B	RF
1	65V10794-33									C	RF
1	65V10794-34									D	RF
1	65V10794-30									E	RF
4	65-86413-39									AB	1
4	65-86413-40									E	1
4	65-86413-45									C	1
4	65-86413-46									D	1
5	65-86413-25										2
10	65-80172-7									ABC	1
10	65-80172-8									DE	1
15	BAC27DPA465										1
20	63-10155										8
25	69-64747-2										1
30	289-701-27										4
35	61-33116-1									A	1
35	61-23100-8									BCDE	1
35	61-23100-5									BCDE	1
40	BACS12CB08										2
45	AN96OPD8										2
50	BACN10FX84										2
55	BACC10DK-( )										2
60	ZH833-39										1
60	37001-39									ABE	1
60	37001-40-1									CD	1
65	BACS12CB08-8P										1
70	BACN10FX83										1
75	BACC10DK7										1
80	BACF20BA1										1
85	115013-01									ABC	1
85	802078-00									ABC	1

**BOEING**   
**COMMERCIAL JET**  
**OVERHAUL MANUAL**

65V10794  
DASH NUMBERS LIMITED

FIG. & ITEM NO.	PART NO.	AIRLINE PART NUMBER	N O M E N C L A T U R E							USE CODE	QTY PER ASSY
			1	2	3	4	5	6	7		
5-85	115013-02		. MANIFOLD ASSY, V16827 (BOEING 10-60513-8)							DE	1
85	802078-01		. MANIFOLD ASSY, V53655 (BOEING 10-60513-12)(OPT) ATTACHING PARTS							DE	1
90	BACS12CB3-22		. SCREW								2
90	NAS603-22P		. SCREW (OPT)								2
95	BACS12CB3-20		. SCREW								1
95	NAS603-20P		. SCREW (OPT)								1
100	MS35335-22		. WASHER								1
105	BACS12CB04-9		. SCREW								2
			-----*								
110	MS3367-4-9		. STRAP (PREF)								1
110	6203		. CLAMP, V81646 (OPT)								1
115	69-68932-1		. DUCT ASSY, AIR (PREF)								1
115	69-68932-2		. DUCT ASSY, AIR (OPT)								1
120	69-64738-1		. . FITTING ASSY, QUICK DISCONNECT								1
125	BE406-3		. . DUCT, AIR, V05399								1
125	AD604-3		. . DUCT, AIR, V21868 (OPT)								1
130	MS3367-4-9		. . STRAP (USED ON 69-68932-2)								1
132	6203		. CLAMP, V81646							BCDE	2
133	BACD40B3-32-3-4		. DUCT							BCDE	1
135	69-62660-2		. MANIFOLD ATTACHING PARTS								1
140	BACS12CB08-8		. SCREW								2
145	BACN10FX83		. CLIPNUT								2
150	BACC10DK12		. CLAMP								2
			-----*								
151	65V10794-101		. PLENUM ASSY ATTACHING PARTS							BCDE	1
151A	BACS12CB06-8		. SCREW							BCDE	4
151B	AN960PD10L		. WASHER							BCDE	4
151C	65V10794-106		. SHIM							BCDE	2
			-----*								
151D	BACN10JP06B		. . NUTPLATE ATTACHING PARTS								4
151E	BACR15BB3D		. . RIVET								8
			-----*								
151F	65-80172-2		. . TUBE								1



**BOEING**   
**COMMERCIAL JET**  
**OVERHAUL MANUAL**

FIG. & ITEM NO.	PART NO.	AIRLINE PART NUMBER	N O M E N C L A T U R E							USE CODE	QTY PER ASSY
			1	2	3	4	5	6	7		
5-151G	65-80172-9		.	.							1
153	65V10794-105		.							BCDE	1
155	L16999-15C		.								2
160	L20646-1C		.								1
162	65V10794-103		.							BCDE	3
163	65V10794-102		.							BCDE	3
165	65-79165-31		.								2
170	65-79165-32		.								1
175	710907-13A2		.								3
180	710906-13A1		.								1
185	69-65298-1		.								1
190	69-65258-1		.								1
195	AMY0110T-8		.	.							1
200	BACM15C1A		.	.							2
205	YHLZ1C-8		.	.							1
-210	BACR15DA6-2		.	.							2
215	NAS602-7		.	.							2
220	AN960PD8L		.	.							2
225	BACN10JC08		.	.							2
230	691212-13A1-1		.								3
235	690623A1-4		.							AB	1
235	65-79164-158		DELETED								
235	932501XXX		.							CD	1
240	10-0429-1		.							ABC	1
240	10-0429-2		.							D	1
245	MS35649-282		.								4
250	MS35335-31		.								4
255	69-65414-1		-----*-----								
260	65-79165-5		.							ABC	1
260	65-79165-6		.							D	1
265	BACN10JC08		ATTACHING PARTS								
270	AN960PD8L		.								4
275	NAS514P832-5P		.								4
			.								4

**BOEING**   
**COMMERCIAL JET**  
**OVERHAUL MANUAL**

65V10794  
DASH NUMBERS LIMITED

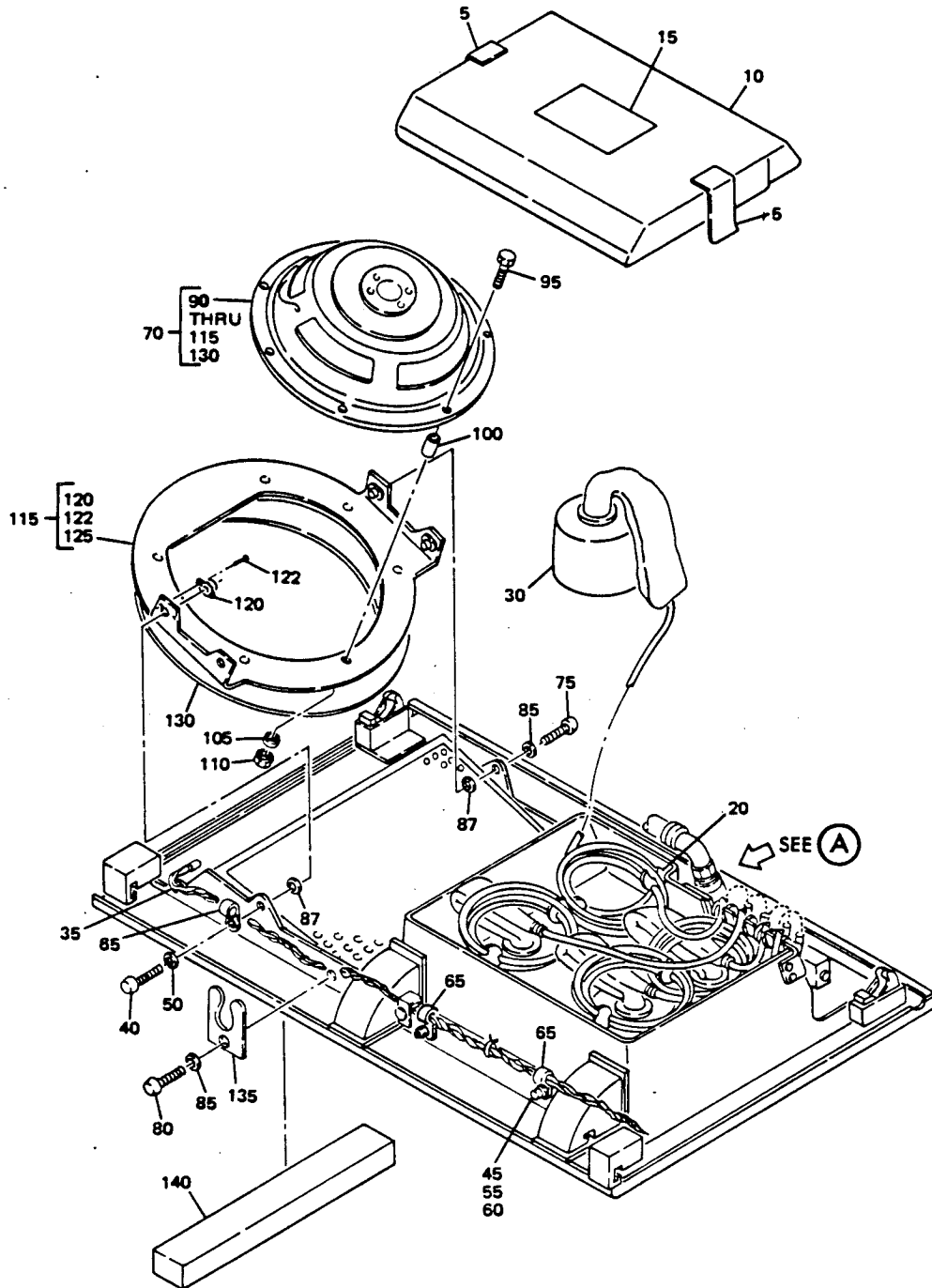
FIG. & ITEM NO.	PART NO.	AIRLINE PART NUMBER	N O M E N C L A T U R E							USE CODE	QTY PER ASSY
			1	2	3	4	5	6	7		
5-280	BACN10JC06		.								1
285	AN960PD6L		.								1
290	NAS601-8P		.								1
			-----*-----								
295	69-63824-3		.								1
295	69-63824-1		.								1
			ATTACHING PARTS								
300	BACN10JC08		.								2
305	BACSL2CB08-5P		.								2
			-----*-----								
310	69-64747-2		.								1
			GUIDE, TUBE								
			ATTACHING PARTS								
315	BACSL2CB08-20F		.								1
320	AN960D8L		.								1
325	NAS42DD6-48		.								1
330	BACN10FX84		.								1
			-----*-----								
335	65-86412-9		.						ABC		1
335	65-86412-10		.						D		1

- ITEM NOT ILLUSTRATED
- \*[1] LENGTH AS REQUIRED
- \*[2] SIZE TO FIT WIRE BUNDLE
- \*[3] SCREW, WASHER AND NUT OPTIONAL TO RIVET

REFERENCE DESIGNATION INDEX (SEE SCHEMATIC DIAGRAM)		
REFERENCE DESIGNATION	PART NUMBER	ITEM NO. FIG. 5
D2000	67-907 *[4]	
L853	10-0429-1	240
S701	710906-13A1	180
S694-S696	710907-13A2	175
T320	69-65298-1	185
D7196P	48-7190 *[4]	
D7180J	48-7191 *[4]	

\*[4] BUNKER-RAMO CORP., CONNECTOR DIV., 2801 S. 25TH AVE., BROADVIEW, ILLINOIS 60153

**BOEING**   
**COMMERCIAL JET**  
**OVERHAUL MANUAL**

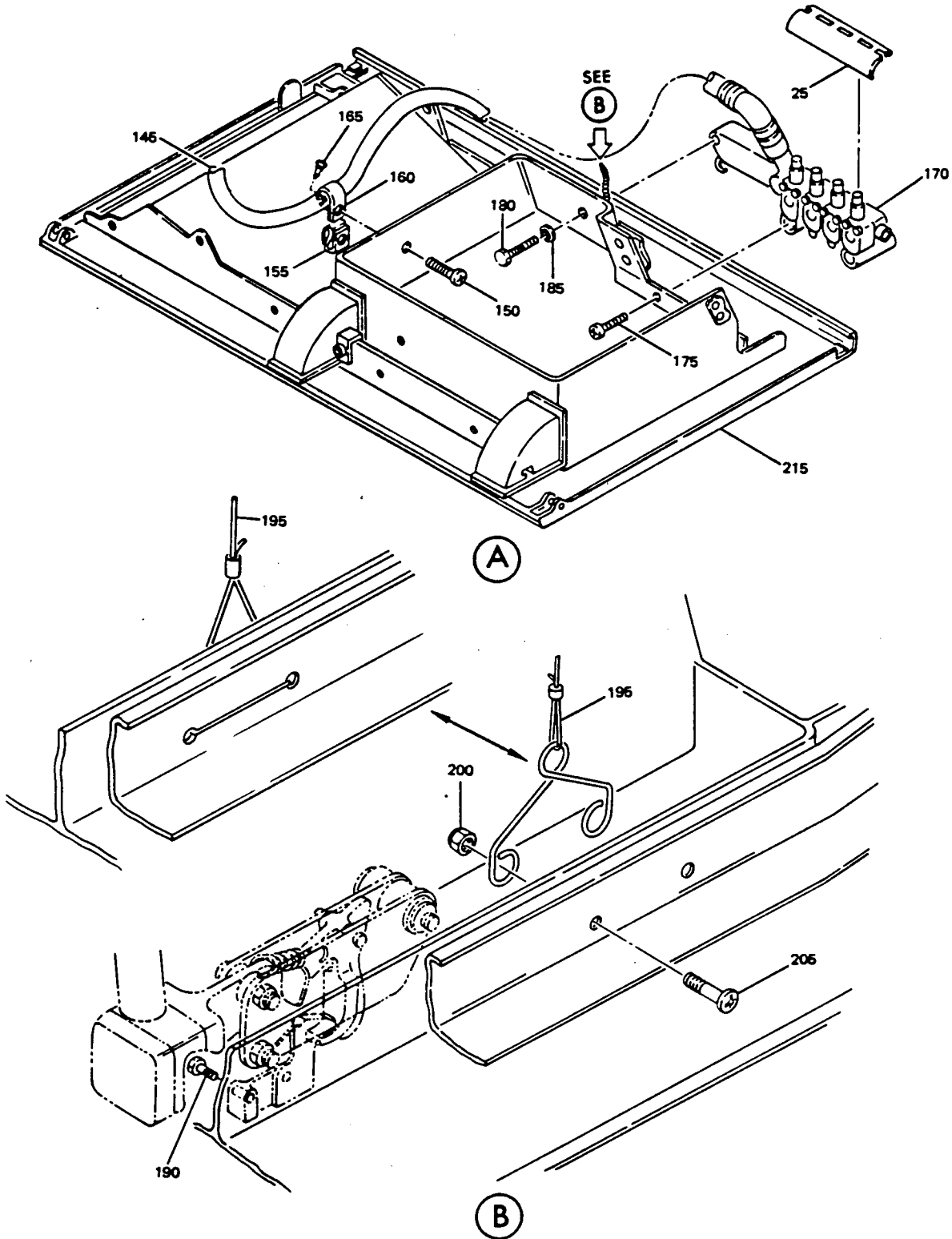


Jul 5/76

Partial Sections Passenger Service Unit Assembly  
Figure 6 (Sheet 1)

**BOEING**   
**COMMERCIAL JET**  
**OVERHAUL MANUAL**

65V10794  
DASH NUMBERS LIMITED



Partial Sections Passenger Service Unit Assembly  
Figure 6 (Sheet 2)

**BOEING**   
**COMMERCIAL JET**  
**OVERHAUL MANUAL**

FIG. & ITEM NO.	PART NO.	AIRLINE PART NUMBER	N O M E N C L A T U R E							USE CODE	QTY PER ASSY
			1	2	3	4	5	6	7		
6-1	65V10794-18		PARTIAL SECTIONS PASSENGER SERVICE UNIT ASSY								RF
5	65-86413-25		. TAPE								2
10	65-80172-8		. COVER, OXYGEN BOX								1
15	BAC27DPA465		. PLACARD								1
20	63-10155		. RETAINER, COIL								8
25	69-64747-1		. GUIDE, TUBE								1
30	289-701-27		. MASK, OXYGEN, V92114 (BOEING 10-60137-49)								4
35	61-27034-1		. BUNDLE, WIRE								1
40	NAS601-7P		ATTACHING PARTS								
45	BACS12CB08		. SCREW								1
50	AN960PD6L		. SCREW *[1]								2
55	AN960PD8		. WASHER								1
60	BACN10JC08		. WASHER								2
65	BACC10DK-( )		. NUT								2
70	*[3]		. CLAMP *[2]								2
75	BACS12CB06-6P		-----*								
80	NAS601-7P		. SPEAKER ASSY								1
85	AN960PD6L		ATTACHING PARTS								
87	NAS549-8		. SCREW								2
90	8AC3		. SCREW								1
95	NAS514F1032-10		. WASHER								3
100	NAS43DD3-16		. WASHER								4
105	AN960C10L		-----*								
110	BACN10JC3		. . . SPEAKER, V26234								1
115	69-62320-1		ATTACHING PARTS								
120	NAS1068A08		. . . SCREW								7
122	BACR15BA3D		. . . SPACER								7
125	69-62320-2		. . . WASHER								7
130	65-61466-3		. . . NUT								7
135	69-64747-2		-----*								
140	800000095-1		. . . MOUNT ASSY, SPEAKER								1
			. . . NUTPLATE								4
			ATTACHING PARTS								
			. . . RIVET								8
			-----*								
			. . . RING, MOUNTING								1
			. . . TAPE, SEALING								1
			. GUIDE, TUBE								1
			. BASE, V05617 (BOEING 10-61892-1)								1

**BOEING**   
**COMMERCIAL JET**  
**OVERHAUL MANUAL**

65V10794  
DASH NUMBERS LIMITED

FIG. & ITEM NO.	PART NO.	AIRLINE PART NUMBER	N O M E N C L A T U R E							USE CODE	QTY PER ASSY
			1	2	3	4	5	6	7		
6-145	ZH833-40										1
145	37001-40										1
150	BACSL2CB08-8P										1
155	BACNLOFX83										1
160	BACC10DK7										1
165	BACP20BA1										1
170	115013-02										1
170	802078-01										1
175	BACSL2CB3-22										2
175	NAS603-22P										2
180	BACSL2CB3-20										1
180	NAS603-20P										1
185	MS35335-32										1
190	BACSL2CB04-9										2
195	69-63824-3										1
195	69-63824-1										1
200	BACN10JC08										2
205	BACSL2CB08-5P										2
210	65-86413-26										1
215	65-86412-8										1

**BOEING**   
**COMMERCIAL JET**  
**OVERHAUL MANUAL**

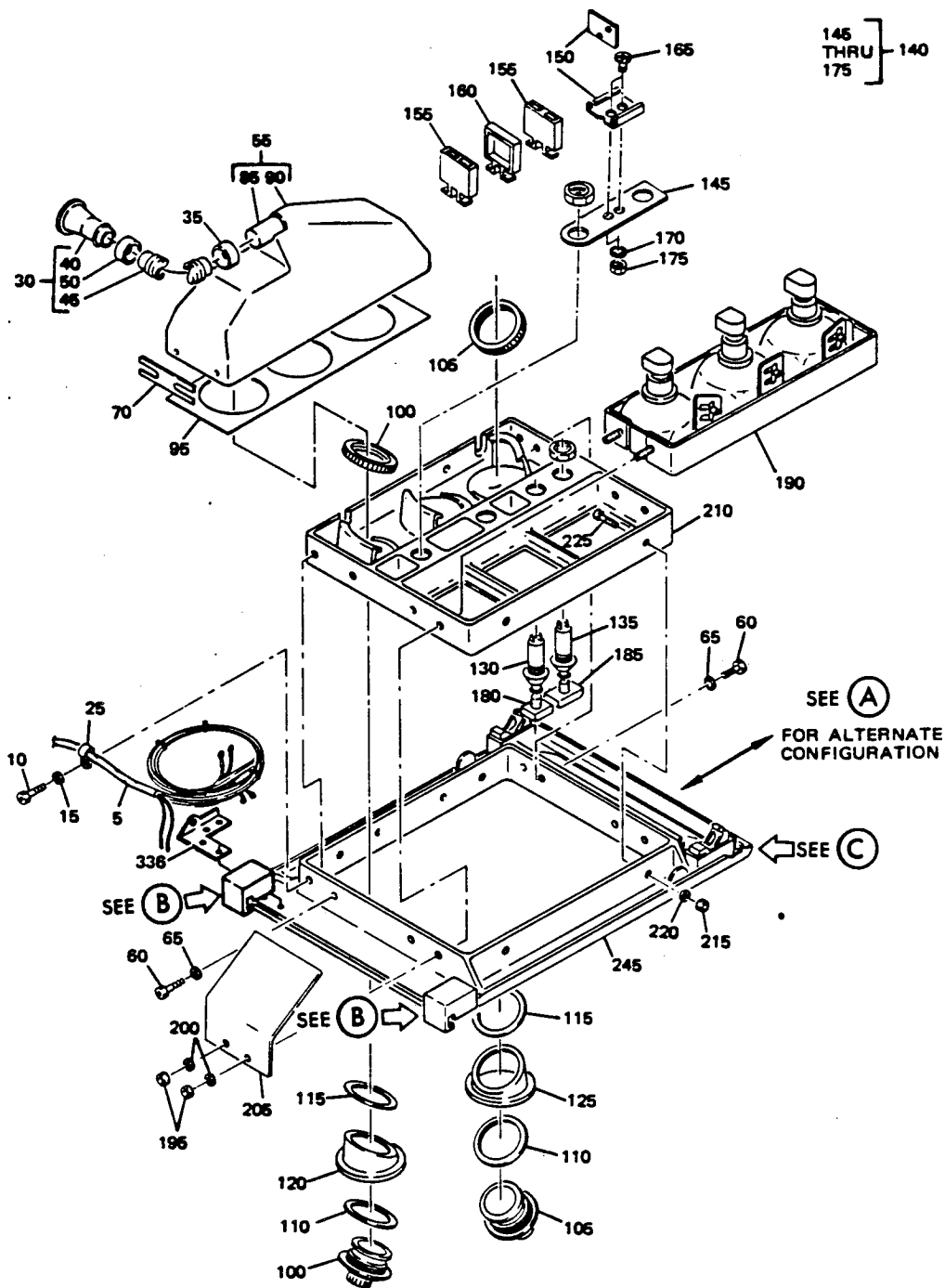
- \*[1] LENGTH AS REQUIRED
- \*[2] SIZE TO FIT WIRE BUNDLE
- \*[3] NO BOEING PART NUMBER ASSIGNED. IDENTICAL TO 69-61466-4 EXCEPT FOR SPEAKER

REFERENCE DESIGNATION INDEX (SEE SCHEMATIC DIAGRAM)		
REFERENCE DESIGNATION	PART NUMBER	ITEM NO. FIG. 6
D4714	67-907 *[4]	
L1714	800 000 095-1	140
M867	8AC3	90
D7289	48-7190 *[4]	
D7326	48-7191 *[4]	

\*[4] BUNKER-RAMO CORP., CONNECTOR DIV., 2801 S. 25TH AVE., BROADVIEW, ILLINOIS  
60153

**BOEING**   
**COMMERCIAL JET**  
**OVERHAUL MANUAL**

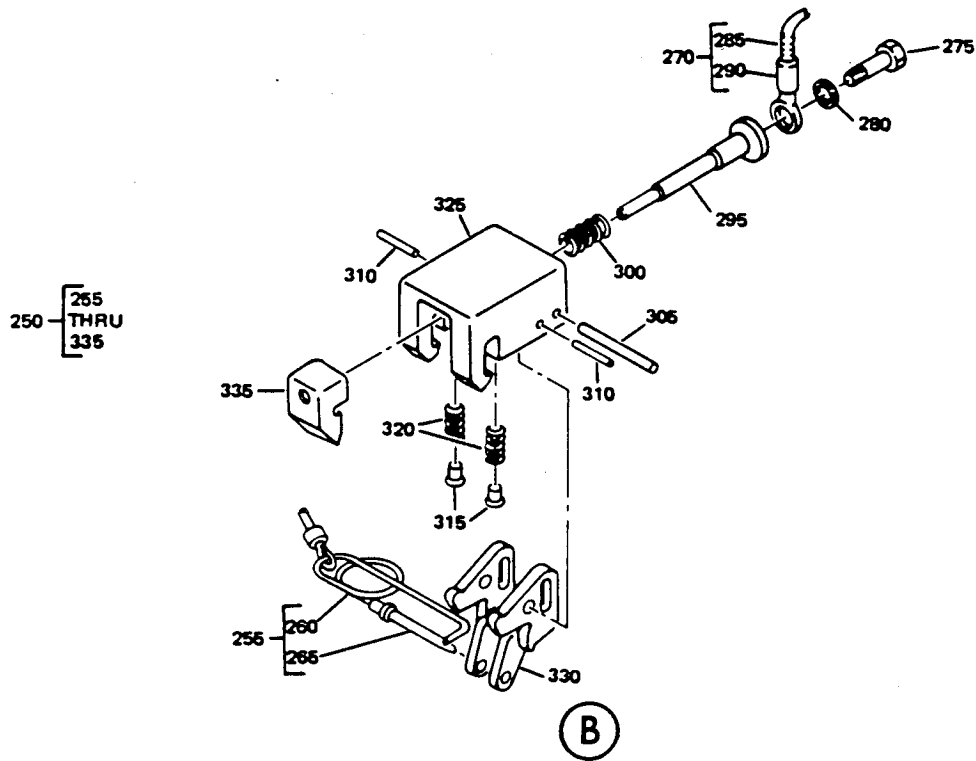
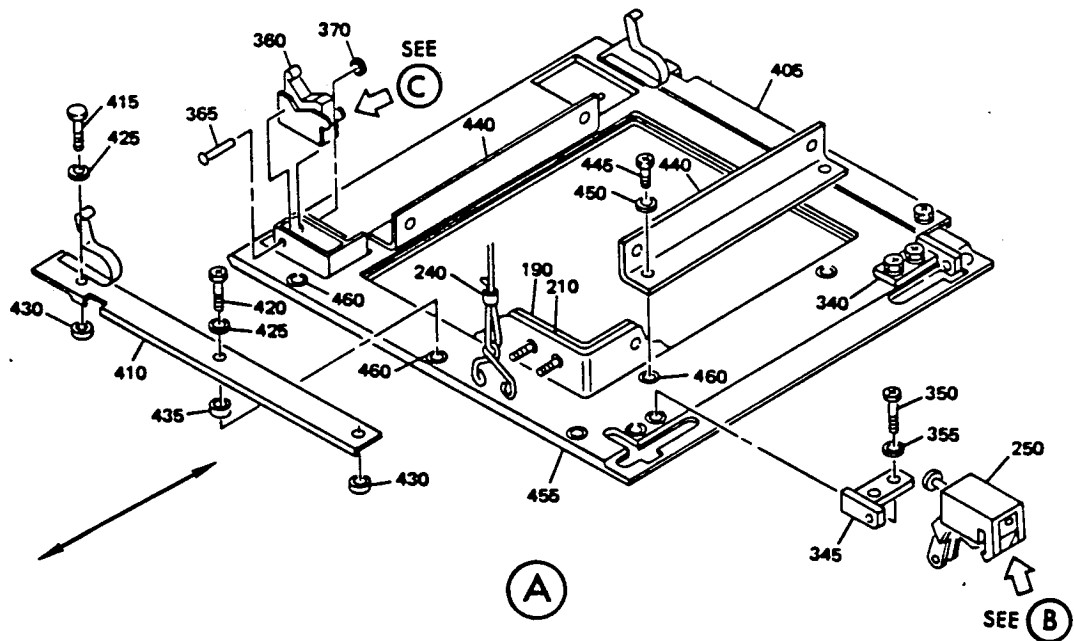
65V10794  
 DASH NUMBERS LIMITED



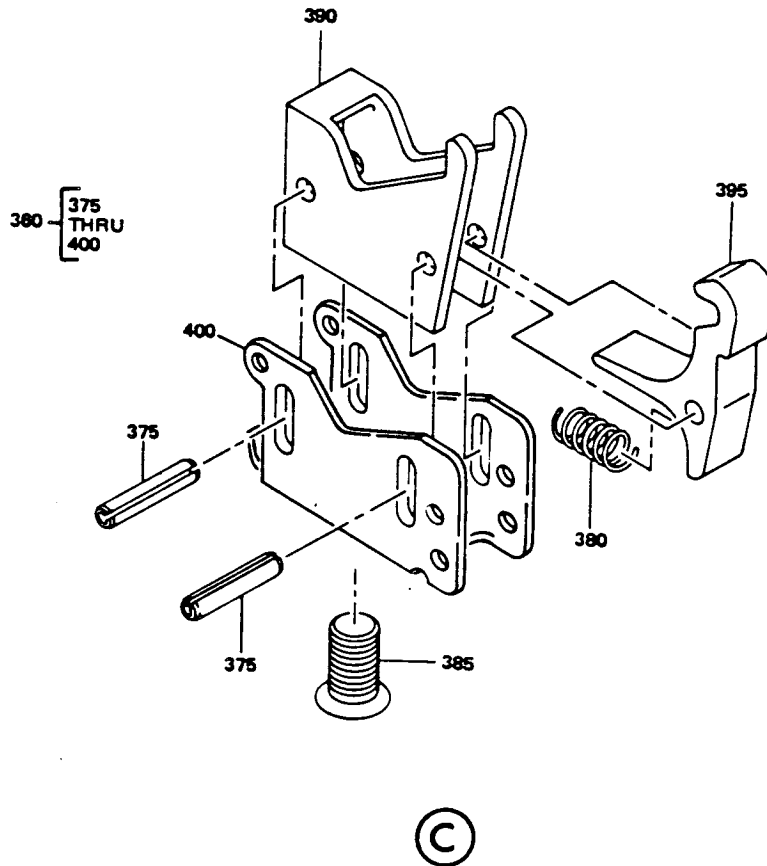
Partial Sections Passenger Service Unit Assembly  
 Figure 7 (Sheet 1)



**BOEING**   
**COMMERCIAL JET**  
**OVERHAUL MANUAL**



Partial Sections Passenger Service Unit Assembly  
Figure 7 (Sheet 2)



Partial Sections Passenger Service Unit Assembly  
Figure 7 (Sheet 3)

**BOEING**   
**COMMERCIAL JET**  
**OVERHAUL MANUAL**

FIG. & ITEM NO.	PART NO.	AIRLINE PART NUMBER	N O M E N C L A T U R E							USE CODE	QTY PER ASSY
			1	2	3	4	5	6	7		
7-											
1	65V10794-23									A	RF
1	65V10794-24									B	RF
1	65V10794-301									C	RF
1	65V10794-302									D	RF
1	65V10794-38									E	RF
4	65-86413-41									A	1
4	65-86413-42									BE	1
5	61-23100-8									ABDE	1
5	61-23100-5									ABE	1
5	61-27034-1									C	1
10	BACS12CB06-10										1
15	AN960PD6L										1
20											
25	BACC10DK-( )										1
30	69-68932-1										1
30	69-68932-2										1
35	MS3367-4-9										1
35	6203										1
40	69-64738-1										1
45	BE406-3										1
45	AD604-3										1
50	6203										1
55	65V10794-101										1
60	BACS12CB06-8										3
65	AN960PD6L										3
70	65V10794-106										2
75	BACN10JPO6B										4
80	BACR15BB3D										8
85	65-80172-2										1
90	65-80172-9										1
95	65V10794-105										1
100	L16999-15C										2

**BOEING**   
**COMMERCIAL JET**  
**OVERHAUL MANUAL**

65V10794  
DASH NUMBERS LIMITED

FIG. & ITEM NO.	PART NO.	AIRLINE PART NUMBER	N O M E N C L A T U R E						USE CODE	QTY PER ASSY
			1	2	3	4	5	6		
7-105	L20646-1C									1
110	65V10794-103									3
115	65V10794-102									3
120	65-79165-31									2
125	65-79165-32									1
130	710907-13A2									3
135	710906-13A1									1
140	69-65298-1									1
145	69-65258-1									1
150	AMY0110T-8									1
155	BACM15C1A									2
160	YHLZ1C-8									1
-165	BACR15DA6-2									2
165	NAS602-7									2
170	AN960PD8L									2
175	BACN10JC08									2
180	691212-13A1-1									3
185	690623A1-4									1
190	10-0429-1							ACD		1
190	10-0429-2							BE		1
195	MS35649-282									4
200	MS35335-31									4
205	69-65414-1							ABE		1
210	65-79165-5							ACD		1
210	65-79165-6							BE		1
215	BACN10JC08									4
220	AN960PD8									4
225	NAS514P832-5P							AB		4
225	NAS514P832-6							CD		4
230										
235										
240	69-63824-1							CD		1
245	65-86412-5							A		1

**BOEING**   
**COMMERCIAL JET**  
**OVERHAUL MANUAL**

FIG. & ITEM NO.	PART NO.	AIRLINE PART NUMBER	N O M E N C L A T U R E							USE CODE	QTY PER ASSY
			1	2	3	4	5	6	7		
7-											
245	65-86412-6									BE	1
245	*[4]									CD	1
250	65-85900-2									CD	2
255	69-64539-1										1
260	69-64539-2										1
265	69-64539-3										1
270	69-61465-5										1
275	NAS1191-06P4L										1
280	AN960PD6										1
285	69-61465-6										1
290	BACT12AC8										1
295	65-85905-1										1
300	RCS3290										1
305	NAS607-2-8P										1
310	NAS607-1-4P										2
315	65-85900-3										2
320	RCS3289										2
325	65-85904-1										1
330	65-85902-1										1
335	65-85903-2										1
336	65C10326-24									E	1
340	65V10794-111									CD	1
345	65V10794-112									CD	1
350	BACS12CB08-5									CD	4
355	AN960PD8									CD	4
360	65-85901-3									CD	2
365	BACR15BB3D10									CD	2
370	6100-9									CD	2
375	MS16562-34										2
380	RCS3288										1
385	65-85905-3										1
390	65-85907-1										1
395	65-85908-1										1
400	69-66979-1										1
405	65V10794-107									CD	1
410	65V10794-108									CD	1

**BOEING**   
**COMMERCIAL JET**  
**OVERHAUL MANUAL**

65V10794  
DASH NUMBERS LIMITED

FIG. & ITEM NO.	PART NO.	AIRLINE PART NUMBER	N O M E N C L A T U R E							USE CODE	QTY PER ASSY
			1	2	3	4	5	6	7		
7-											
415	BACS12CB08-6		.	.	SCREW					CD	4
420	BACS12CB08-7		.	.	SCREW					CD	2
425	AN960PD8		.	.	WASHER					CD	6
430	BACS18K8-8W		.	.	SPACER					CD	4
435	BACS18K8-10W		.	.	SPACER					CD	2
			-----*								
440	65V10794-113		.	.	ANGLE, SUPPORT ATTACHING PARTS					CD	2
445	BACS12CB08-4		.	.	SCREW					CD	4
450	AN960PD8		.	.	WASHER					CD	4
455	*[4]		.	.	BONDED ASSY					CD	1
460	SL607-08-4S		.	.	INSERT, V97393						14

- ITEM NOT ILLUSTRATED

- \*[1] VARY LENGTH AS REQUIRED
- \*[2] SIZE TO FIT WIRE BUNDLE
- \*[3] REMOVE BOOT AND CLAMP, IF ATTACHED
- \*[4] NO BOEING PART NUMBER ASSIGNED

**BOEING**   
**COMMERCIAL JET**  
**OVERHAUL MANUAL**

REFERENCE DESIGNATION INDEX *[5]		
REFERENCE DESIGNATION	PART NUMBER	ITEM NO. FIG. 7
D4714	67-907 *[6]	
L1740	10-10429-1	190
L1740	10-10429-2	190
S1203	710906-13A1	135
S1197	710907-13A2	130
S1198	710907-13A2	130
S1175	710907-13A2	130

\*[5] REFER TO 25-20-00 FOR 61-23100-2, -5 WIRE BUNDLE SCHEMATIC. REFER TO FIG. 2 FOR 61-27034 SCHEMATIC.

\*[6] BUNKER-RAMO CORP., CONNECTOR DIV., 2801 S 25TH AVE., BROADVIEW, ILLINOIS 60153

VENDORS

- V02217 PURITAN-BENNETT AEROSYSTEMS DIV., 111 PENN ST., EL SEGUNDO, CALIFORNIA 90245
- V05399 BEMCO INC., P.O. BOX 68, CENTERTON, ARKANSAS 72719
- V05617 BELL INDUSTRIES, FARWEST MFG. DIV., 12410 S.E. 32ND ST., BELLEVUE, WASHINGTON 98005
- V08205 RENTON COIL SPRING CO., 325 BURNETT N., RENTON, WASHINGTON 98055
- V09922 BURNDY CORP., RICHARDS AVE., NORWALK, CONNECTICUT 06852
- V16340 PACIFIC ELECTRO DYNAMICS, 14220 S.E. EASTGATE WAY, BELLEVUE, WASHINGTON 98007
- V16827 PURITAN EQUIPMENT INC., 10800 PFLUMM RD., LENEXA, KANSAS 66210
- V17744 LUMINATOR DIV., GULION INDUSTRIES INC., 1200 E. DALLAS N. PARKWAY, PLANO, TEXAS 75074
- V21868 H.K. PORTER CO. INC., THERMOID DIV., GOVERNMENT SALES OFFICE, 601 GRANT ST., 1627 PORTER BLDG., PITTSBURGH, PENNSYLVANIA 15219
- V24984 HYDRAFLOW SUPPLY INC., 5341 SHEILA ST., LOS ANGELES, CALIFORNIA 90040
- V26234 GTS OF PADUCAH INC., 1565 N. 8TH ST., PADUCAH, KENTUCKY 42001
- V53655 SCOTT AVIATION DIVISION OF A-T-O INC., 225 ERIE ST., LANCASTER, NEW YORK 14086

**BOEING**   
**COMMERCIAL JET**  
**OVERHAUL MANUAL**

65V10794  
DASH NUMBERS LIMITED

VENDORS

V72914 GRIMES MFG. CO., 515 N. RUSSELL, URBANA, OHIO 43078

V81646 IDEAL CORP. SUBSIDIARY OF PARKER-HANNIFIN CORP., 1000 PENNSYLVANIA  
AVE., BROOKLYN, NEW YORK 11207

V83462 PEMCOR INC., JENSEN SOUND LAB., 43100 TRANSWORLD RD., SCHILLER PARK,  
ILLINOIS 60176

V92114 SIERRA ENGINEERING CO. DIV. OF CAPTECH INC., 123 E. MONTECITO AVE.,  
SIERRA MADRE, CALIFORNIA 91024

V83462 CLARE-PENDAR INC., P.O. BOX 785, POST FALLS, IDAHO 83854



**BOEING**   
**COMMERCIAL JET**  
**OVERHAUL MANUAL**

Part No.	Fig. and Index No.	Qty. per Assy.
AD604-3	5-125	1
AD604-3	7-45	1
AMY0110T-8	5-195	1
AMY0110T-8	7-150	1
AN743-13	4-225	1
AN960C10L		AR
AN960D8L		AR
AN960PD10L		AR
AN960PD6		AR
AN960PD6L		AR
AN960PD8		AR
AN960PD8L		AR
BACCL0DK12	5-150	2
BACCL0DK7	5-75	1
BACCL0DK7	6-160	1
BACCL0DK-( )	4-25	1
BACCL0DK-( )	5-55	2
BACCL0DK-( )	6-65	2
BACCL0DK-( )	7-25	1
BACD40B3-32-3-4	5-133	1
BE406-3	5-125	1
BE406-3	7-45	1
BACM15C1A	5-200	2
BACM15C1A	7-155	2
BACN10FX83	5-70	1
BACN10FX83	5-145	2
BACN10FX83	6-155	1
BACN10FX84	4-170	1
BACN10FX84	5-50	2
BACN10FX84	5-330	1
BACN10JCO6	4-22	1
BACN10JCO6	4-45	4
BACN10JCO6	4-65	3
BACN10JCO6	5-280	1
BACN10JCO8	5-225	2
BACN10JCO8	5-265	4
BACN10JCO8	5-300	2
BACN10JCO8	6-60	2
BACN10JCO8	6-200	2
BACN10JCO8	7-175	2
BACN10JCO8	7-215	4
BACN10JC3	4-120	7
BACN10JC3	6-110	7

Part No.	Fig. and Index No.	Qty. per Assy.
BACN10JPO6B	5-151D	4
BACN10JPO6B	7-75	4
BACP20BA1	5-80	1
BACP20BA1	6-165	1
BACR15BA3D	4-135	8
BACR15BA3D	6-122	8
BACR15BB3D	5-151E	8
BACR15BB3D	7-80	8
BACR15BB3D10	7-365	2
BACR15DA6-2	5-210	2
BACR15DA6-2	7-165	2
BACSL2CB04-9	5-105	2
BACSL2CB04-9	6-190	2
BACSL2CB06	4-75	1
BACSL2CB06-10	7-10	1
BACSL2CB06-5	4-15	1
BACSL2CB06-5	4-35	4
BACSL2CB06-5	4-55	3
BACSL2CB06-6P	4-80	1
BACSL2CB06-6P	6-75	2
BACSL2CB06-7P	4-15	1
BACSL2CB06-8	5-151A	4
BACSL2CB06-8	7-60	3
BACSL2CB08	5-40	2
BACSL2CB08	6-45	2
BACSL2CB08-20P	4-155	1
BACSL2CB08-20P	5-315	1
BACSL2CB08-4	7-445	4
BACSL2CB08-5	7-350	4
BACSL2CB08-5P	5-3	2
BACSL2CB08-5P	6-205	2
BACSL2CB08-6	7-415	4
BACSL2CB08-7	7-420	2
BACSL2CB08-8	5-140	2
BACSL2CB08-8P	5-65	1
BACSL2CB08-8P	6-150	1
BACSL2CB3-20	5-95	1
BACSL2CB3-20	6-180	1
BACSL2CB3-22	5-90	2
BACSL2CB3-22	6-175	2
BACS18K8-10W	7-435	2
BACS18K8-8W	7-430	4
BACT12AC8	7-290	1

**OVERHAUL MANUAL**

Part No.	Fig. and Index No.	Qty. per Assy.
BAC27DPA465	4-15	1
BAC27DPA465	6-15	1
L16999-15C	5-155	2
L16999-15C	7-100	2
L20646-1C	5-160	1
L20646-1C	7-105	1
MS16562-34		AR
MS3367-4-9		AR
MS35335-31		AR
MS35335-32		AR
MS35649-282		AR
NAS1068A08		AR
NAS1191-06P4L		AR
NAS42DD6-48		AR
NAS43DD3-16		AR
NAS514P1032-10		AR
NAS514P832-5P		AR
NAS514P832-6		AR
NAS549-8		AR
NAS601-5P	4-210	AR
NAS601-7P		AR
NAS601-8P		AR
NAS602-7		AR
NAS603-20P		AR
NAS603-22P		AR
NAS607-1-4P		AR
NAS607-2-8P		AR
RCS3288	7-380	1
RCS3289	7-320	2
RCS3290	7-300	1
SL607-08-4S	7-460	14
YHLZ1C-8	5-205	1
YHLZ1C-8	7-160	1
ZH833-39	5-60	1
ZH833-40	6-145	1

Part No.	Fig. and Index No.	Qty. per Assy.
10-0429-1	5-240	1
10-0429-1	7-190	1
10-0429-2	5-240	1
10-0429-2	7-190	1
10-60137-49	5-30	4
10-60137-49	6-30	4
10-60141-18	5-155	2
10-60141-18	7-100	2
10-60141-19	5-160	1
10-60141-19	7-105	1
10-60174-39	5-60	1
10-60174-40	5-60	1
10-60174-40	6-145	1
10-60513-11	5-85	1
10-60513-12	5-85	1
10-60513-12	6-170	1
10-60513-7	5-85	1
10-60513-8	5-85	1
10-60513-8	6-170	1
10-61779-1	5-240	1
10-61779-1	7-190	1
10-61779-2	5-240	1
10-61779-2	7-190	1
10-61892-1	4-5	1
10-61892-1	6-140	1
115013-01	5-85	1
115013-02	5-85	1
115013-02	6-170	1
289-701-27	5-30	4
289-701-27	6-30	4
37001-39	5-60	1
37001-40	6-145	1
37001-40-1	5-60	1
6100-9	7-370	2
61-23100-5	5-35	1
61-23100-5	7-5	1
61-23100-8	4-10	1
61-23100-8	5-35	1
61-23100-8	7-5	1
61-27034-1	4-10	1
61-27034-1	6-35	1

**BOEING**   
**COMMERCIAL JET**  
**OVERHAUL MANUAL**

Part No.	Fig. and Index No.	Qty. per Assy.	Part No.	Fig. and Index No.	Qty. per Assy.
61-27034-1	7-5	1	65V10794-9	4-1	RF
61-33116-1	5-35	1	65V10795-101	7-55	1
61-33120-001	4-220	1	65-61466-3	4-145	1
6203	5-110	1	65-61466-3	5-130	1
6203	5-132	2	65-79165-31	5-165	2
6203	7-35	1	65-79165-31	7-120	2
6203	7-50	1	65-79165-32	5-170	1
63-10155	5-20	8	65-79165-32	7-125	1
63-10155	6-20	8	65-79165-5	5-260	1
65V10794-10	4-1	RF	65-79165-5	7-210	1
65V10794-101	5-151	1	65-79165-6	5-260	1
65V10794-101	7-55	1	65-79165-6	7-210	1
65V10794-102	5-163	3	65-80172-2	5-151F	1
65V10794-102	7-115	3	65-80172-2	7-85	1
65V10794-103	5-162	3	65-80172-7	5-10	1
65V10794-103	7-110	3	65-80172-8	5-10	1
65V10794-104	4-50	2	65-80172-8	6-10	1
65V10794-105	5-153	1	65-80172-9	5-151G	1
65V10794-105	7-95	1	65-80172-9	7-90	1
65V10794-106	5-151C	2	65-85900-2	7-250	2
65V10794-106	7-70	2	65-85900-3	7-315	2
65V10794-10	7-405	1	65-85901-3	7-360	2
65V10794-108	7-410	1	65-85902-1	7-330	1
65V10794-11	5-1	RF	65-85903-2	7-335	1
65V10794-111	7-340	1	65-85904-1	7-325	1
65V10794-112	7-345	1	65-85905-1	7-295	1
65V10794-113	7-440	2	65-85905-3	7-385	1
65V10794-17	4-1	RF	65-85907-1	7-390	1
65V10794-18	6-1	RF	65-85908-1	7-395	1
65V10794-23	7-1	RF	65-86412-1	4-180	1
65V10794-24	7-1	RF	65-86412-10	5-335	1
65V10794-29	3-1	RF	65-86412-2	4-180	1
65V10794-29	5-1	RF	65-86412-5	7-245	1
65V10794-30	5-1	RF	65-86412-6	7-245	1
65V10794-301	7-1	RF	65-86412-8	6-215	1
65V10794-302	7-1	RF	65-86412-9	5-335	1
65V10794-33	3-1	RF	65-86413-25	6-5	2
65V10794-33	5-1	RF	65-86413-25	5-5	2
65V10794-34	3-1	RF	65-86413-26	4-175	AR
65V10794-34	5-1	RF	65-86413-26	6-210	1
65V10794-38	7-1	RF	65-86413-39	5-4	1
65V10794-401	4-1	RF	65-86413-40	5-4	1
65V10794-402	4-185	1	65-86413-41	7-4	1
65V10794-403	4-190	1	65-86413-42	7-4	1
65V10794-404	4-195	1	65-86413-45	5-4	1
65V10794-405	4-200	1	65-86413-46	5-4	1

**BOEING**  
**COMMERCIAL JET**  
**OVERHAUL MANUAL**

65V10794  
DASH NUMBERS LIMITED

Part No.	Fig. and Index No.	Qty. per Assy.	Part No.	Fig. and Index No.	Qty. per Assy.
690623A1-4	5-235	1	8AC3	6-90	1
690623A1-4	7-185	1	800000095-1	4-5	1
691212-13A1-1	5-230	3	800000095-1	6-140	1
691212-13A1-1	7-180	3	802078-00	5-85	1
69-61465-5	7-270	1	802078-01	5-85	1
69-61465-6	7-285	1	802078-01	6-170	1
69-61466-5	4-205	1	93250LXXX	5-235	1
69-62320-1	4-125	1			
69-62320-1	6-115	1			
69-62320-2	4-140	1			
69-62320-2	6-125	1			
69-62660-2	5-135	1			
69-63824-1	4-150	1			
69-63824-1	5-295	1			
69-63824-1	6-195	1			
69-63824-1	7-240	1			
69-63824-3	5-295	1			
69-63824-3	6-195	1			
69-64539-1	7-255	1			
69-64539-2	7-260	1			
69-64539-3	7-265	1			
69-64738-1	5-120	1			
69-64738-1	7-40	1			
69-64747-1	5-25	1			
69-64747-1	6-25	1			
69-64747-2	5-310	1			
69-64747-2	6-135	1			
69-65258-1	5-190	1			
69-65258-1	7-145	1			
69-65298-1	5-185	1			
69-65298-1	7-140	1			
69-65414-1	5-255	1			
69-65414-1	7-205	1			
69-66979-1	7-400	1			
69-68932-1	5-115	1			
69-68932-1	7-30	1			
69-68932-2	5-115	1			
69-68932-2	7-30	1			
710906-13A1	5-180	1			
710906-13A1	7-135	1			
710907-13A2	5-175	3			
710907-13A2	7-130	3			
75101-5	4-30	1			
8AC3	4-100	1			