

**BOEING**   
**COMMERCIAL JET**  
**OVERHAUL MANUAL**

TO: ALL HOLDERS OF OXYGEN MASK CONTAINER ASSEMBLY OVERHAUL MANUAL, 25-21-20

REVISION NO. 0, DATED JAN 5/79

HIGHLIGHTS

DESCRIPTION OF CHANGE	TOPICS AFFECTED												
	D & O	D/Assy	Cleaning	Insp/Chk	Repair	Assy	F/C	Test	T/Shooting	S/Tools	Storage	IPL	L/Overhaul
Released new manual covering Oxygen Service Container Assy 65V11529.													

# OXYGEN SERVICE CONTAINER ASSEMBLY

## 25-21-20

BOEING P/N 65V11529-1, -2, -6, -7, -9, -12, -14, -16, -18

AIRLINE P/N

---

THE FOLLOWING DIRECTIVES APPLY TO THIS SUBJECT:

BOEING SERVICE BULLETIN	BOEING TEMPORARY REVISION	OTHER DIRECTIVES	DATE DIRECTIVE INCORPORATED INTO TEXT

**BOEING**   
**COMMERCIAL JET**  
**OVERHAUL MANUAL**

LIST OF EFFECTIVE PAGES					
* Indicates pages revised, added or deleted in latest revision					
F Indicates foldout pages - print one side only					
PAGE	DATE	PAGE	DATE	PAGE	DATE
25-21-20					
* T-1	Jan 5/79				
* T-2	BLANK				
* LEP-1	Jan 5/79				
* LEP-2	BLANK				
* T/C-1	Jan 5/79				
* T/C-2	BLANK				
* 1	Jan 5/79				
* 2	Jan 5/79				
* 3	Jan 5/79				
* 4	Jan 5/79				
* 5	Jan 5/79				
* 6	Jan 5/79				
* 7	Jan 5/79				
* 8	Jan 5/79				
* 9	Jan 5/79				
* 10	Jan 5/79				
* 11	Jan 5/79				
* 12	BLANK				

**BOEING**   
**COMMERCIAL JET**  
**OVERHAUL MANUAL**

TABLE OF CONTENTS

<u>Paragraph Title</u>	<u>Page</u>
Description and Operation . . . . .	*
Disassembly . . . . .	*
Cleaning. . . . .	*
Inspection/Check. . . . .	*
Repair. . . . .	1
Assembly. . . . .	2
Fits and Clearances (not applicable)	
Testing . . . . .	*
Trouble Shooting. . . . .	*
Storage Instructions. . . . .	*
Special Tools, Fixtures, and Equipment (not applicable)	
Illustrated Parts List. . . . .	4

\* This manual contains only refinish, replacement and special assembly information and illustrated parts list. All other approved procedures for this unit are in 25-20-00, Passenger Service Unit Overhaul Procedures.

**BOEING**   
**COMMERCIAL JET**  
**OVERHAUL MANUAL**

OXYGEN SERVICE CONTAINER ASSEMBLY

1. REPAIR

A. Materials

NOTE: Use listed materials or equivalent substitutes.

- (1) Enamel, Urethane -- BMS 10-83, type 2, BAC7144 off-white (Ref 20-60-02)
- (2) Lacquer, high speed flat, BAC700 white, Sherwin Williams Company, 101 Prospect Ave. NW, Cleveland, Ohio 44115
- (3) Lacquer, special semigloss, BAC712 white (Ref 20-60-02)
- (4) Primer, Epoxy -- BMS 10-11, type 1 (Ref 20-60-02)
- (5) Primer, Urethane -- BMS 10-83, type 1 (Ref 20-60-02)
- (6) Tape, white, 1-inch wide -- Permacel P-32 (Ref 20-60-04)

B. Refinish

NOTE: Refer to 20-30-02 for stripping of protective finishes and to 20-41-01 for explanation of F and SRF finish codes.

- (1) Door assembly (85, Fig. 3) -- Mask foil marker (90) and apply BMS 10-83, type 1 primer, followed by BMS 10-83, type 2 urethane enamel, BAC7144 off-white (F-22.05-7144) all over.
- (2) Plate (102, Fig. 3) -- Apply one coat BMS 10-83, type 1 primer, followed by BMS 10-83, type 2 urethane enamel, BAC7144 off-white (F-22.05-7144). Material: Alum alloy.
- (3) Stiffener (110) and door (120) -- Alodize (F-17.07). Material: Alum alloy.
- (4) Hinges (135, 140) and mounting plate assembly (295) -- Alodize or chromic acid anodize (Ref 20-43-01) and apply one coat BMS 10-11, type 1 primer (SRF-2.30). Material: Alum alloy.
- (5) Bracket (208, 345) -- Alodize and apply one coat BMS 10-11, type 1 primer (F-18.06), followed by two coats high-speed flat lacquer, BAC700 white. Material: Alum alloy.
- (6) Angle (285) and container (290) -- Apply two coats high-speed semigloss lacquer, BAC712 white (F-14.904-712). Material: Angle (285) is alum alloy; container (290) is glass-fiber-reinforced polyester.

**BOEING**   
**COMMERCIAL JET**  
**OVERHAUL MANUAL**

65V11529

- (7) Angle (85, Fig. 4) and container (120) -- Apply two coats high-speed semigloss lacquer, BAC712 white (F-14.904-712). Material: Angle (85) is alum alloy; container (120) is glass-fiber-reinforced polyester.
- (8) Container (110, Fig. 5) -- Apply two coats high-speed semigloss lacquer, BAC712 white (F-14.904-712). Material: Glass-fiber-reinforced polyester.

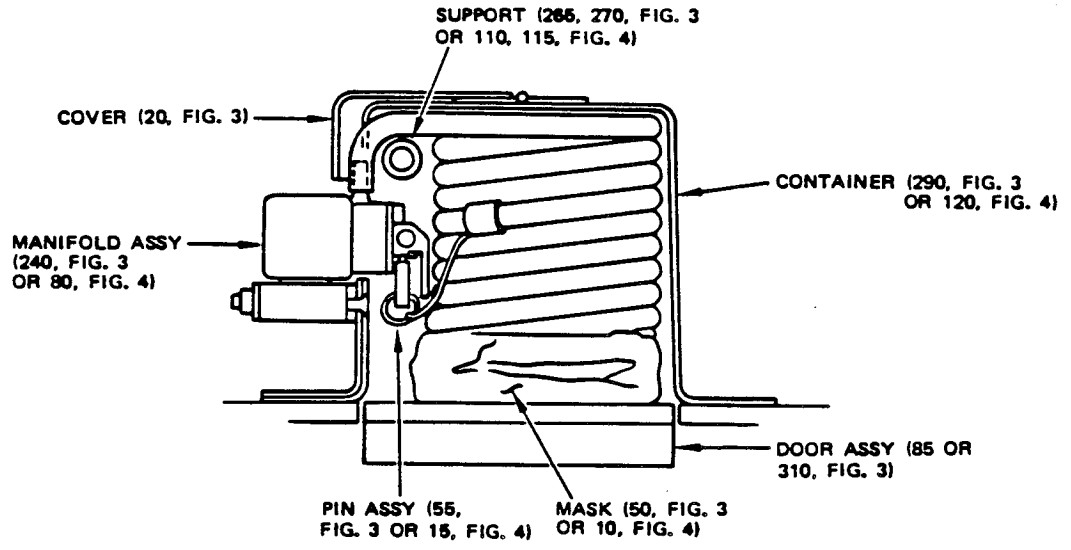
C. Replacement

- (1) If tape (10, Fig. 3) needs to be replaced, cut 4-inch long strip of white Permacel 32 tape.
- (2) If cover (120, Fig. 4) used on container assembly 65V11519-17 needs to be replaced, trim 0.125 inch from flange of 65V11204-3 container on side opposite manifold.

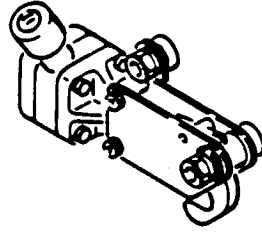
2. ASSEMBLY

- A. Install oxygen mask assemblies (45, Fig. 3; 5, Fig. 4) as shown in Fig. 1, making sure that there are no kinks in mask tubing where it passes over supports (265, 270, Fig. 3; 110, 115, Fig. 4).
- B. Before installing latch assembly (170, Fig. 3; 45, Fig. 4) make sure that oxygen inlet port is oriented as shown in Fig. 2.

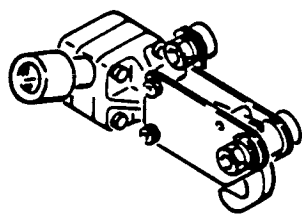
**BOEING**  
**COMMERCIAL JET**  
**OVERHAUL MANUAL**



Oxygen Mask Installation  
Figure 1



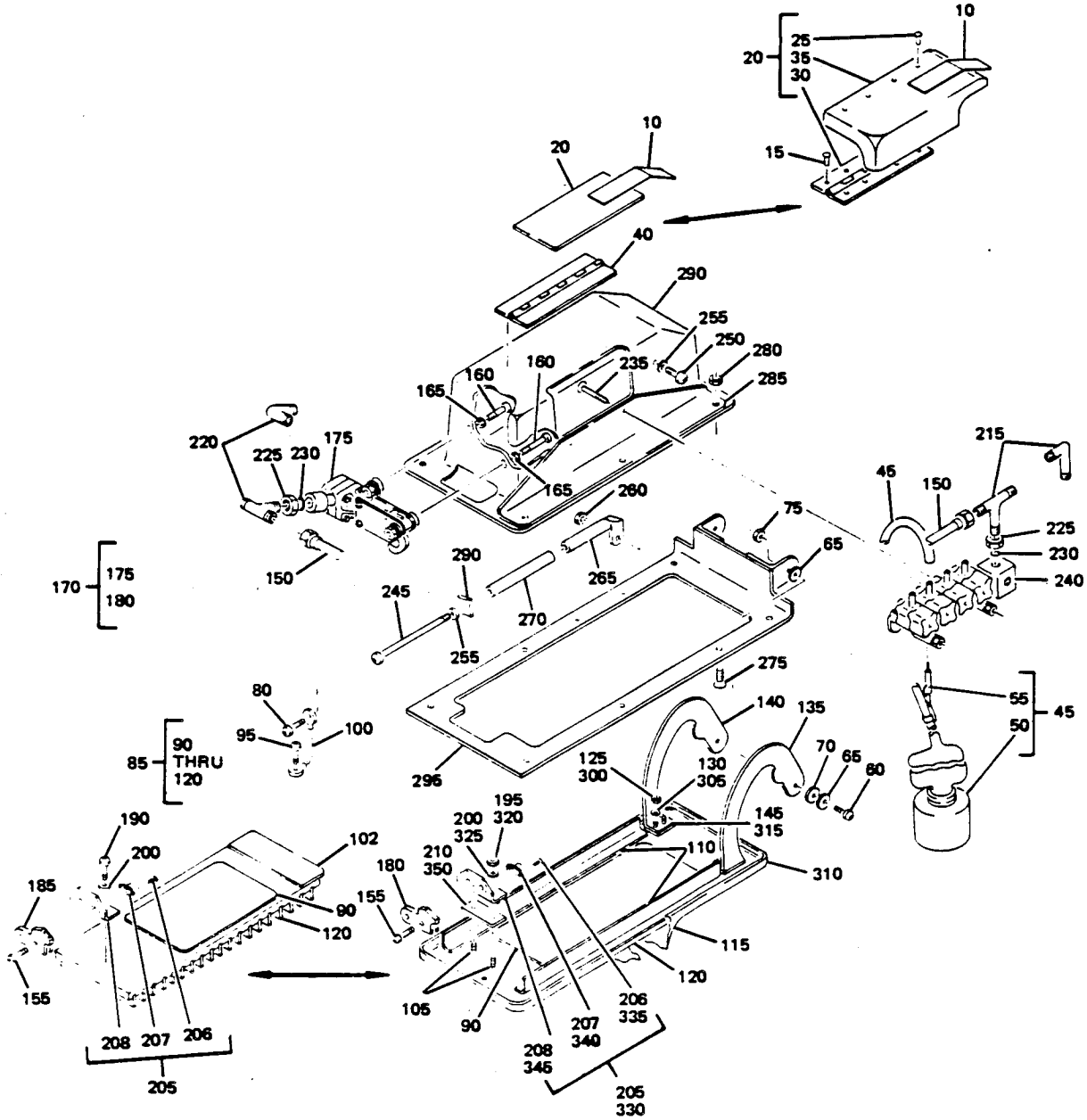
65V11026-5



65V11026-4 AND -8

Oxygen Inlet Part Orientation  
Figure 2

2. ILLUSTRATED PARTS LIST



Oxygen Service Container  
 Figure 3



**BOEING**   
**COMMERCIAL JET**  
**OVERHAUL MANUAL**

FIG. & ITEM NO.	PART NO.	AIRLINE PART NUMBER	N O M E N C L A T U R E							USE CODE	QTY PER ASSY
			1	2	3	4	5	6	7		
3-	65V11529-1		CONTAINER ASSY, OXYGEN SERVICE							A	RF
	65V11529-2		CONTAINER ASSY, OXYGEN SERVICE							B	RF
	65V11529-6		CONTAINER ASSY, OXYGEN SERVICE							C	RF
	65V11529-7		CONTAINER ASSY, OXYGEN SERVICE							D	RF
	65V11529-9		CONTAINER ASSY, OXYGEN SERVICE							E	RF
	65V11529-12		CONTAINER ASSY, OXYGEN SERVICE							F	RF
	65V11529-14		CONTAINER ASSY, OXYGEN SERVICE							G	RF
	65V11529-16		CONTAINER ASSY, OXYGEN SERVICE							H	RF
	65V11529-18		CONTAINER ASSY, OXYGEN SERVICE							I	RF
5	65V11529-8		. CONTAINER ASSY (FIG. 4) (NOT ILLUSTRATED)							D	1
5	65V11529-10		. CONTAINER ASSY (FIG. 5) (NOT ILLUSTRATED)							E	1
5	65V11529-13		. CONTAINER ASSY (FIG. 4) (NOT ILLUSTRATED)							F	1
5	65V11529-15		. CONTAINER ASSY (FIG. 4) (NOT ILLUSTRATED)							G	1
5	65-11529-17		. CONTAINER ASSY (FIG. 4) (NOT ILLUSTRATED)							H	1
5	65V10687-50		. CONTAINER ASSY (REF 25-21-17)							I	1
10	65V10687-40		. TAPE							A-DFG H	1
15	BACR15BB4D		. RIVET							DFGH	4
20	65V11529-4		. COVER							ABC	1
20	65V11230-2		. COVER ASSY, DUST							DFGH	1
25	BACR15BB4D		. . RIVET							DFGH	4
30	65V11230-6		. . HINGE							DFGH	1
35	65V11230-4		. . COVER							DFGH	1
40	65V11529-3		. HINGE							ABC	1
45	69V10315-1		. MASK ASSY, OXYGEN							ABC	2
50	289-701-3		. . MASK, V92114 (BOEING 10-60137-27)								1
55	210650		. . PIN ASSY, FULL, V02217								1
60	NAS603-9P		. SCREW							ABC	2
60	BACSL2CB3-9		. SCREW							E	2
65	BACW10P193G		. WASHER							ABCE	4
70	66-15702-1		. SPACER							ABCE	2
75	BACN10JC3		. NUT							ABCE	2
80	BACSL2CB3-7		. SCREW							DFGH	2
80	NAS603-7		. SCREW							I	2
85	65V11222-26		. DOOR ASSY							ABE	1

**BOEING**   
**COMMERCIAL JET**  
**OVERHAUL MANUAL**

65V11529

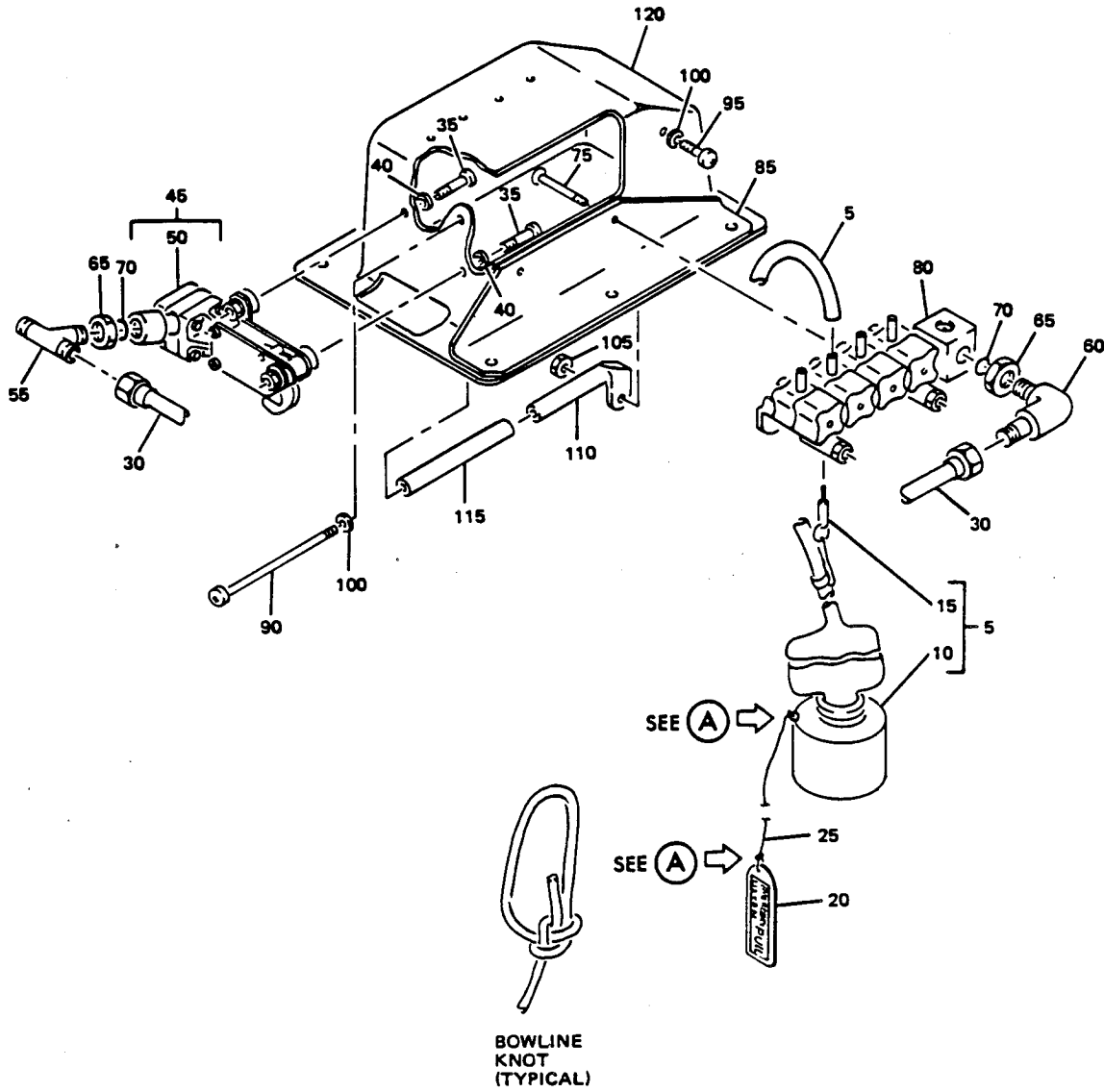
FIG. & ITEM NO.	PART NO.	AIRLINE PART NUMBER	N O M E N C L A T U R E							USE CODE	QTY PER ASSY
			1	2	3	4	5	6	7		
3-85	65V11395-9		.	.	.	.	.	.	.	DFH	1
85	65V11395-2		.	.	.	.	.	.	.	GI	1
90	BAC27DPA2386		.	.	.	.	.	.	.	ABE	1
90	BAC27DPA1801		.	.	.	.	.	.	.	DF-I	1
95	BACSL2CB3-5		.	.	.	.	.	.	.	DFH	2
95	NAS603-5		.	.	.	.	.	.	.	GI	2
100	63-9580-10		.	.	.	.	.	.	.	DF-I	2
102	65V11395-5		.	.	.	.	.	.	.	DF-I	1
105	BACS21AQ6A3M		.	.	.	.	.	.	.	ABE	6
110	65V11222-18		.	.	.	.	.	.	.	ABE	2
115	65V11222-17		.	.	.	.	.	.	.	ABE	1
120	65V11222-16		.	.	.	.	.	.	.	ABE	1
120	*[1]		.	.	.	.	.	.	.	DF-I	1
125	BACNMG8		.	.	.	.	.	.	.	ABE	4
130	AN960-8L		.	.	.	.	.	.	.	ABE	4
135	69V10319-7		.	.	.	.	.	.	.	ABE	1
135	69V10319-1		.	.	.	.	.	.	.	ABE	1
135	66-16406-2		.	.	.	.	.	.	.	C	1
140	69V10319-8		.	.	.	.	.	.	.	ABE	1
140	69V10319-2		.	.	.	.	.	.	.	ABE	1
140	66-16406-1		.	.	.	.	.	.	.	C	1
145	65-86016-2		.	.	.	.	.	.	.	AB	2
145	BACS4OR08B12F		.	.	.	.	.	.	.	E	2
150	65V11529-101		.	.	.	.	.	.	.	AB	1
150	65V11529-102		.	.	.	.	.	.	.	C	1
150	65V11529-103		.	.	.	.	.	.	.	I	1
155	NAS600-8		.	.	.	.	.	.	.	ABC	2
160	NAS603-12		.	.	.	.	.	.	.	ABC	2
165	AN960-10L		.	.	.	.	.	.	.	ABC	2
170	65V11026-5		.	.	.	.	.	.	.	AB	1
170	65V11026-8		.	.	.	.	.	.	.	C	1
175	118210-01		.	.	.	.	.	.	.		1
180	210784		.	.	.	.	.	.	.		1
185	210784		.	.	.	.	.	.	.	DF-I	1
190	NAS603-5		.	.	.	.	.	.	.	DF-I	2
195	BACN10JC08		.	.	.	.	.	.	.	ABE	2
200	AN960-8L		.	.	.	.	.	.	.	ABE	2
200	AN960-10L		.	.	.	.	.	.	.	DF-I	2
205	69V10372-6		.	.	.	.	.	.	.	ABE	1
205	69V10372-5		.	.	.	.	.	.	.	DF-I	1
206	MS20426A3		.	.	.	.	.	.	.		4

**BOEING**   
**COMMERCIAL JET**  
**OVERHAUL MANUAL**

FIG. & ITEM NO.	PART NO.	AIRLINE PART NUMBER	N O M E N C L A T U R E							USE CODE	QTY PER ASSY
			1	2	3	4	5	6	7		
3-207	BACN10JPO4A		.	.							2
208	69V10372-8		.	.					ABE		1
208	69V10372-7		.	.					DF-I		1
210	BACS40R10D16F		.						ABE		1
215	65-87621-19		.						A		1
215	65-87621-15		.						BC		1
220	65-87621-15		.						A		1
220	65-87621-19		.						BC		1
225	AN924-5J		.						ABC		2
230	BACP11K5		.						ABC		2
235	NAS514P1032-26		.						ABC		2
240	115014-01		.						ABC		1
245	BACS12CB3-53		.						ABC		1
245	NAS603-53P		.						ABC		1
250	NAS603-6		.						ABC		1
255	AN960-10L		.						ABC		2
260	BACN10JC3		.						ABC		1
265	65V10687-16		.						ABC		1
270	65V10687-17		.						ABC		1
275	NAS514P1032-8		.						ABC		4
280	BACN10JC3		.						ABC		4
285	69V10375-2		.						ABC		1
290	65V11204-2		.						ABC		1
295	65V11221-5		.						ABC		1
295	65V11221-7		.						E		1
INSTALLATION PARTS											
300	BACN10MG8										4
305	AN960-8L										4
310	65V11222-26										1
315	BACS40R08H12F										2
320	BACN10JC08										2
325	AN960-8L										2
330	69V10372-6										1
335	MS20426A3		.								4
340	BACN10JPO4A		.								2
345	69V10372-8		.								1
350	BACS40R10D16F		.								1

\*[1] NO BOEING PART NUMBER ASSIGNED

\*[2] SUPERSEDES HOSE ASSY, BOEING SPEC 10-60174-31 NORMALLY USED ON 65V10687-50



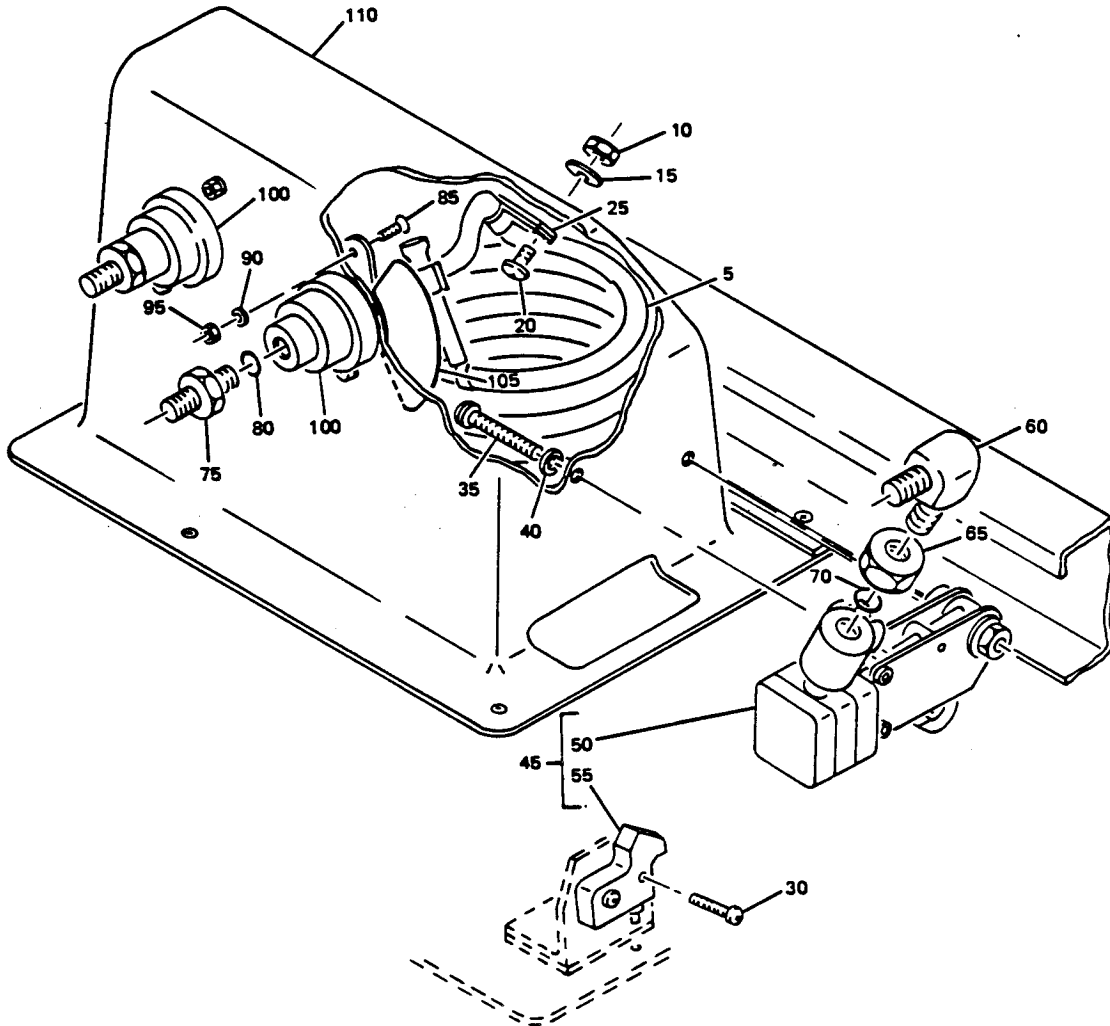
(A)

Container Assembly  
 Figure 4

**BOEING**   
**COMMERCIAL JET**  
**OVERHAUL MANUAL**

FIG. & ITEM NO.	PART NO.	AIRLINE PART NUMBER	N O M E N C L A T U R E						USE CODE	QTY PER ASSY
			1	2	3	4	5	6		
4-	65V11529-8								A	RF
	65V11529-13								B	RF
	65V11529-15								C	RF
	65V11529-17								D	RF
5	69V10315-1								AD	2
5	69V10315-4								BC	2
10	289-701-3								AD	1
10	69V10315-5								BC	1
15	210650									1
20	66-35012								C	2
25	65-53524-4								C	2
30	ZH833-31									1
30	37001-31									1
35	NAS603-12									2
40	AN960-10L									2
45	65V11026-4									1
50	118210-01									1
55	65-87621-19									1
60	65-87621-15									1
65	AN924-5J									2
70	BACP11K5									2
75	NAS514P1032-26									2
80	115014-01									1
85	69V10375-2									1
90	BACSL2CB3-53									1
90	NAS603-53P									1
95	BACSL2CB3-6									1
100	AN960-10L									2
105	BACN10JC3									1
110	65V10687-16									1
115	65V10687-17									1
120	65V11204-3								ABC	1
120	*[1]								D	1

\*[1] NO BOEING PART NUMBER ASSIGNED



Container Assembly  
Figure 5

**BOEING**   
**COMMERCIAL JET**  
**OVERHAUL MANUAL**

FIG. & ITEM NO.	PART NO.	AIRLINE PART NUMBER	N O M E N C L A T U R E							USE CODE	QTY PER ASSY
			1	2	3	4	5	6	7		
5-	65V11529-10		CONTAINER ASSY								RF
5	289-701-3		. MASK ASSY, V92114 (BOEING 10-60137-27)								2
10	BACN10JC3		. NUT								2
15	AN960PD616		. WASHER								2
20	BACSL2CH3-5		. SCREW								2
25	BACCL0DK4		. CLAMP								2
30	NAS600-8		. SCREW								2
35	NAS603-12		. SCREW								2
40	AN960-10L		. WASHER								2
45	65V11026-5		. LATCH ASSY								1
50	118210-01		. . LATCH ASSY, V02217								1
55	210784		. . HOOK, V02217								1
60	65-87621-15		. ELBOW								1
65	AN924-5J		. NUT								1
70	BACP11K5		. PACKING								1
75	65-87621-21		. REDUCER								2
80	BACP11K4		. PACKING								2
85	NAS514P1032-8		. SCREW								4
90	AN960PD616		. WASHER								4
95	BACN10JC3		. NUT								4
100	8999-7		. OUTLET, OXYGEN, V53655 (BOEING 10-60135-4)								2
105	BACM9P21-4A		. PLACARD, OFF-ON								2
110	65V11204-4		. CONTAINER								1

VENDORS

V02217 PURITAN-BENNET AEROSYSTEMS DIV., 111 PENN ST., EL SEGUNDO,  
CALIFORNIA 90245

V24984 HYDRAFLOW SUPPLY INC., 13529 E. 166TH ST., CERRITOS, CALIFORNIA  
90701

V53655 SCOTT AVIATION DIV. OF A-T-O INC., 225 ERIE ST., LANCASTER, NEW YORK  
14086

V92114 SIERRA ENGINEERING CO., DIV. OF CAPTECH INC., 123 E. MONTECITO AVE.,  
SIERRA MADRE, CALIFORNIA 91024