

**OVERHAUL MANUAL**

TO: ALL HOLDERS OF FORWARD RIGHT-HAND CLOSET ASSEMBLY OVERHAUL MANUAL 25-24-06

REVISION NO. 1, DATED MAR 5/91

HIGHLIGHTS

DESCRIPTION OF CHANGE	TOPICS AFFECTED												
	D & O	D / Assy	Cleaning	Insp / Chk	Repair	Assy	F / C	Test	T / Shooting	S / Tools	Storage	I P L	L / Overhaul
Incorporated SB 25-1238 which replaces the existing doors and rails with new doors and rails						X						X	

# FORWARD RIGHT HAND CLOSET ASSEMBLY 25-24-06

BOEING P/N 65C27540-1

AIRLINE P/N

---

THE FOLLOWING DIRECTIVES APPLY TO THIS SUBJECT:

BOEING SERVICE BULLETIN	BOEING TEMPORARY REVISION	OTHER DIRECTIVES	DATE DIRECTIVE INCORPORATED INTO TEXT
SB 25-1238		PRR 33195-1 PRR 33466 PRR 34571	Dec 5/84 Dec 5/84 Mar 5/91

**OVERHAUL MANUAL**

**LIST OF EFFECTIVE PAGES**

\* Indicates pages revised, added or deleted in latest revision  
 F Indicates foldout pages - print one side only

PAGE	DATE	PAGE	DATE	PAGE	DATE
25-24-06					
* T-1	Mar 5/91				
T-2	BLANK				
* LEP-1	Mar 5/91				
LEP-2	BLANK				
T/C-1	Dec 5/84				
T/C-2	BLANK				
1	Dec 5/84				
2	BLANK				
* 401	Mar 5/91				
402	Dec 5/84				
403	Dec 5/84				
404	BLANK				
* 501	Mar 5/91				
* 502	Mar 5/91				
* 503	Mar 5/91				
504	BLANK				
* 1101	Mar 5/91				
1102	Dec 5/84				
1103	Dec 5/84				
1104	Dec 5/84				
1105	Dec 5/84				
* 1106	Mar 5/91				
* 1107	Mar 5/91				
1108	Dec 5/84				
1109	Dec 5/84				
1110	Dec 5/84				
1111	Dec 5/84				
1112	Dec 5/84				
1113	Dec 5/84				
1114	Dec 5/84				
1115	Dec 5/84				
1116	Dec 5/84				
* 1117	Mar 5/91				
* 1118	Mar 5/91				
* 1119	Mar 5/91				
* 1120	Mar 5/91				
* 1120A	Mar 5/91				
* 1120B	BLANK				
1121	Dec 5/84				
1122	Dec 5/84				
1123	Dec 5/84				
1124	Dec 5/84				
1125	Dec 5/84				
1126	BLANK				



OVERHAUL MANUAL  
TABLE OF CONTENTS

<u>Paragraph Title</u>	<u>Page</u>
Description and Operation . . . . .	1
Disassembly . . . . .*[1]	
Cleaning. . . . .*[1]	
Inspection/Check (not applicable)	
Repair. . . . .	401
Assembly. . . . .	501
Fits and Clearances (not applicable)	
Testing (not applicable)	
Trouble Shooting (not applicable)	
Storage Instructions (not applicable)	
Special Tools, Fixtures, and Equipment (not applicable)	
Illustrated Parts List. . . . .	1101

\*[1] Special instructions not required. Use standard industry practices.



## OVERHAUL MANUAL

DESCRIPTION AND OPERATION

1. The closet assembly consists of bonded, honeycomb panel assemblies and a storage shelf and coat rack. Access to the storage shelf is through a hinged door. Access to the coat rack is through two interconnected sliding doors. The doors are connected through a rack and gear mechanism that allows simultaneous opening of the upper and lower doors. As the upper door is slid downward, the lower door moves down at a slower speed so that both doors bottom out at the same time. Spring pressure on the door guides prevents the door from free falling.

2. Leading Particulars (approximate)

Height -- 80 inches

Length -- 38 inches

Width -- 22 inches

Weight -- 80 lbs

**OVERHAUL MANUAL**REPAIR

1. Repair minor defects using standard industry practices. Other repair consists of restoration of original finish. Refer to refinishing for details.

2. Materials

NOTE: Equivalent substitute may be used.

A. Enamel BMS 10-83 Type II (Ref 20-60-02)

B. Primer (Ref 20-60-02)

(1) BMS 5-89

(2) BMS 10-11 Type 1

(3) BMS 10-83 Type 1

3. Refinish (1101)

NOTE: Refer to 20-30-02 for stripping of protective finishes, and to 20-41-01 for explanation of F and SRF finish codes.

A. Trim (215, 480), rack (505 and plate (630) -- Sulfuric acid anodize and apply directional (longitudinal) coarse grain buff satin finish (F-14.25), exposed surface only. Material: Al alloy.

B. Coat Rod (65), trim (135), plate (475) and retainer (500) -- Sulfuric acid anodize and apply directional (longitudinal) coarse grain buff satin finish (F-14.251). Material: Al alloy.

C. Hinge (110) and trim (395, 570) -- Sulfuric acid anodize (F-14.2992). Material: Al alloy.

D. Stop (130) -- Apply directional (longitudinal) coarse grain satin finish (F-14.80). Material: AISI 304 CRES.

E. Catch (450, 1080) and gear post (575) -- Passivate, method 2 (F-17.09). Material: Catch (450, 1080), 15-5 PH CRES, 180-200 ksi; Gear post (575), 15-5 PH CRES, 150-170 ksi.

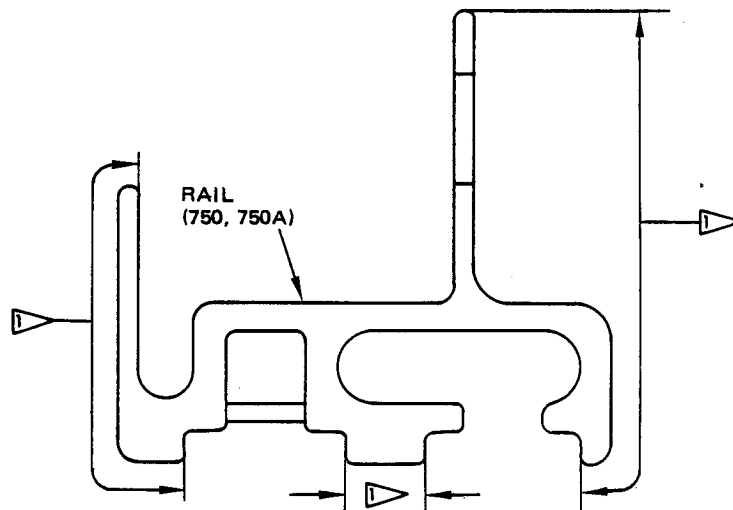
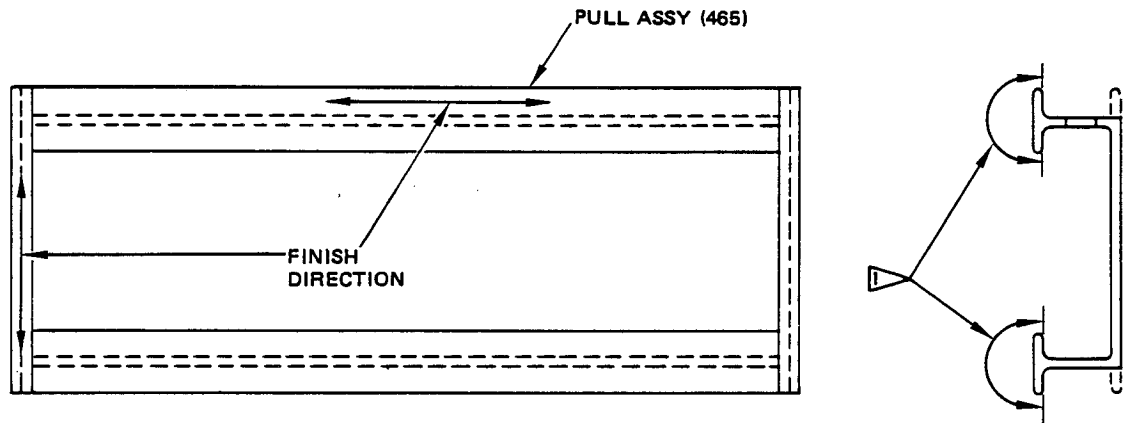
F. Guide (660) -- Chemical treat to meet the requirements of MIL-C-5541 class 3 (F-17.15). Material: Al alloy.

G. Angle (460, 1090), bracket (770), and plate (850, 960) -- Chemical treat and apply one coat of BMS 10-11 primer Type 1 (F-18.06). Material: Al alloy.

**OVERHAUL MANUAL**

- H. Fitting (205) and angles (805, 810, 820, 825, 830, 835, 840, 845) -- Chromic acid anodize type 1, and apply one coat BMS 10-11, type 1, primer (F-18.13).
- I. Latch plate (160) -- Apply BMS 5-89 corrosion resistance bondable primer (F-20.26). Material: Al alloy.
- J. Plate (325) -- Chemical treat and apply one coat of BMS 10-11 primer (F-18.06) then apply BMS 10-83 type II enamel (F-22.06-7390) for clad aluminum alloy. Optional, chromic acid anodize type 1 and apply one coat of BMS 10-11, type I primer (F-18.13), then apply BMS 10-83 type II enamel (F-22.06-7390) for bare aluminum alloy.
- K. Strike (780) -- Passivate (F-17.09). Material: 17-4 PH CRES; Optional, cadmium plate (0.0002 to 0.0004 inch) type 2, class 3 (F-15.02). Material: 4340 or 4130 steel.
- L. Rails (750, 750A), and pull assembly (465) -- Fig. 401.

## OVERHAUL MANUAL

**REFINISH**

APPLY COARSE GRAIN BUFF SATIN FINISH  
 LONGITUDINALLY USING L-LEA COMPOUND OF 120 GRIT  
 ALUMINUM OXIDE OR EQUIVALENT. SULFURIC ACID  
 ANODIZE (F-14.25)

 FINISH THESE SURFACES ONLY



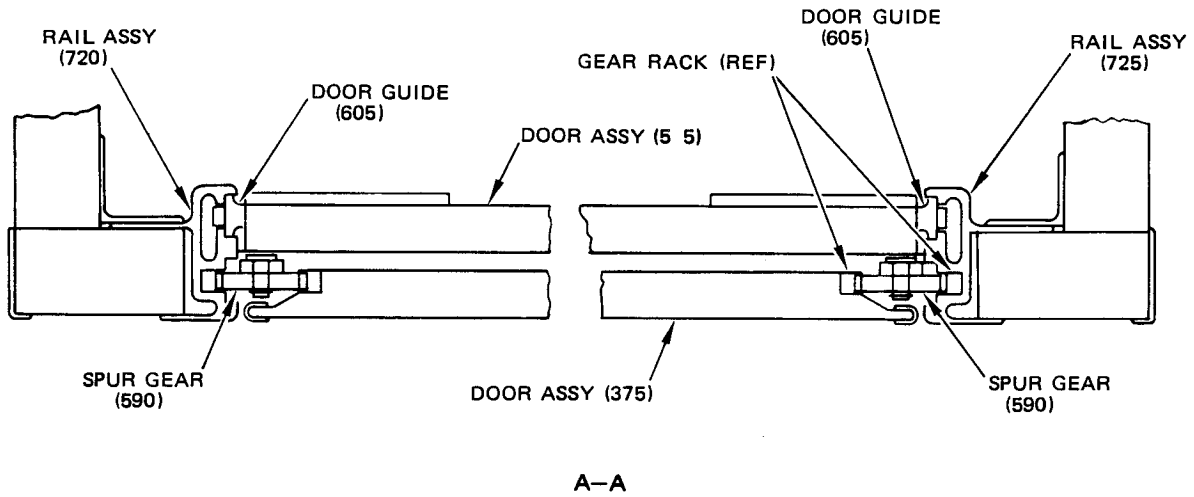
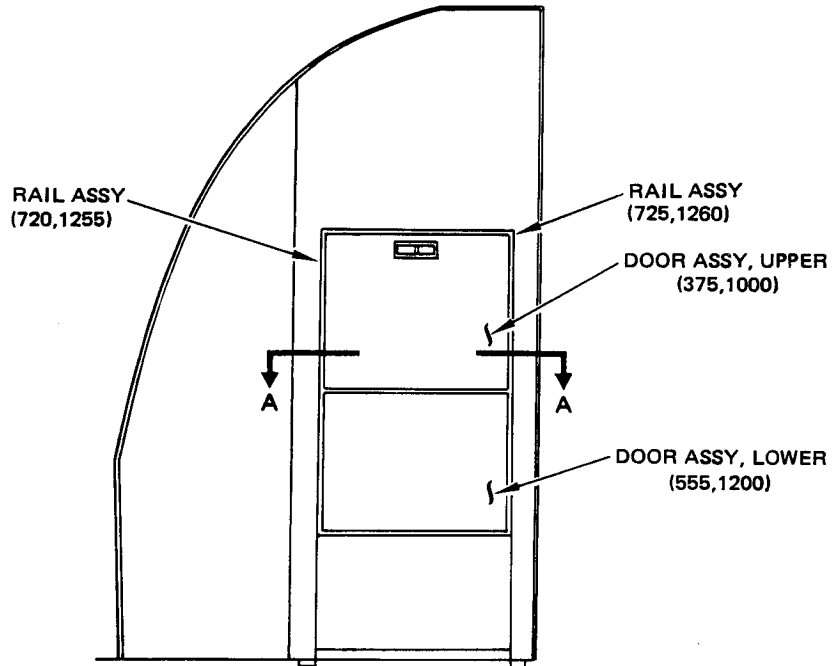
**OVERHAUL MANUAL**ASSEMBLY

CAUTION: UNIT IS VISIBLE TO PASSENGERS WHEN INSTALLED. USE CARE TO PREVENT MARRING VISIBLE SURFACES.

NOTE: Use standard industry practices and the following steps for assembly of this component. The Post SB 25-1238 door assembly (1000, 1200) only requires standard industry practices for assembly.

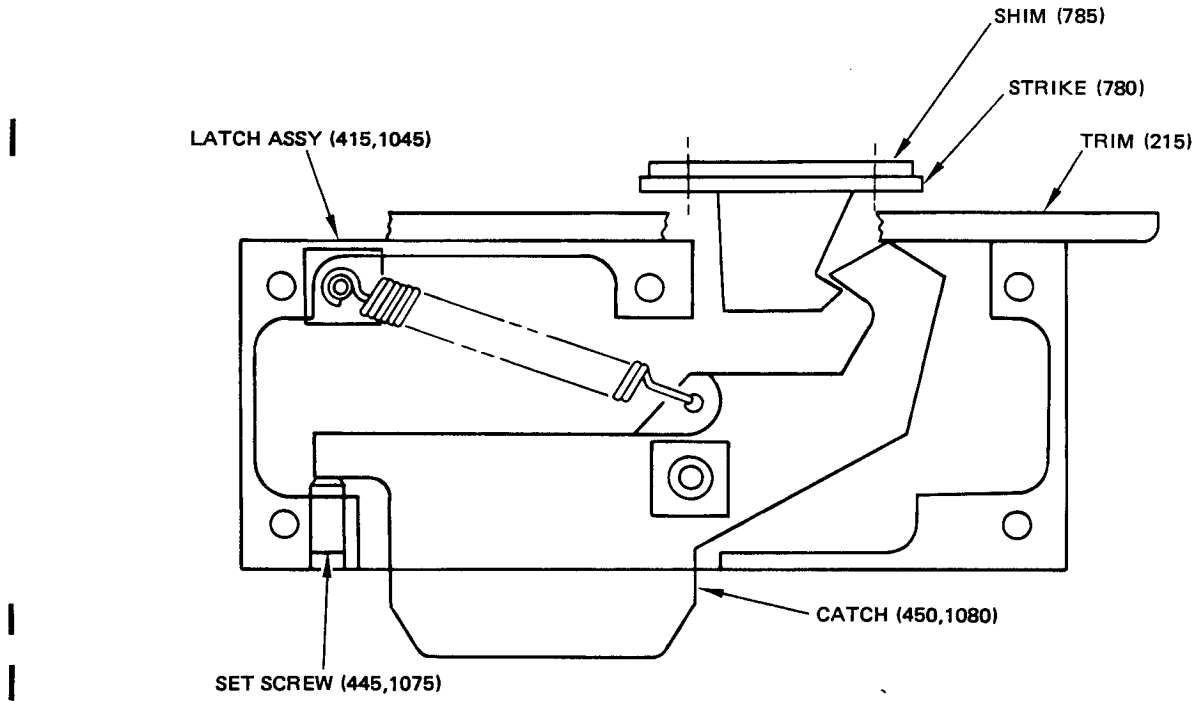
1. Door (375, 555) installation and adjustment (Fig. 501, IPL 1101)
  - A. Loosen screws (730) and move rails (720, 725) as far apart as possible.
  - B. Set door (555) in position on inner track of rails with lower door edge at bottom of closet per Fig. 501. Allow door guides (605) to hold door in position.
  - C. Set door (375) into position with lower edge of door (555).
  - D. Loosen screws (565) and adjust spur gears (590) to mesh with door gear racks (745) with minimum backlash (Fig. 501). Lock spur gears in place by tightening screws (565).
  - E. Move rail assemblies (720, 725) an equal distance from both edges of closet and tighten screws (730) in rail (725).
  - F. Adjust rail (720) at bottom of opening to mesh with spur gear (590) with minimum amount of backlash. Tighten lowest screw (730) in rail (720).
  - G. Cycle doors to top of opening and adjust rail (720) to mesh with spur gear with minimum amount of backlash, keeping rails (720, 725) parallel. Tighten remaining screws (730).
  - H. Cycle doors up and down in rails and check for smooth operation. Repeat steps F. and G. as necessary to attain smooth operation. Check that doors remain stationary or creep down very slowly when left at any position with closet in vertical position.
2. Adjust door latches (Fig. 502) for Pre and Post SB 25-1238 door assembly.
  - A. Delaminate shim (785) to adjust for flush fit of trim (215) and door (375, 1000).
  - B. Adjust set screw (445, 1075) to attain sufficient catch (450, 1080) engagement.

OVERHAUL MANUAL

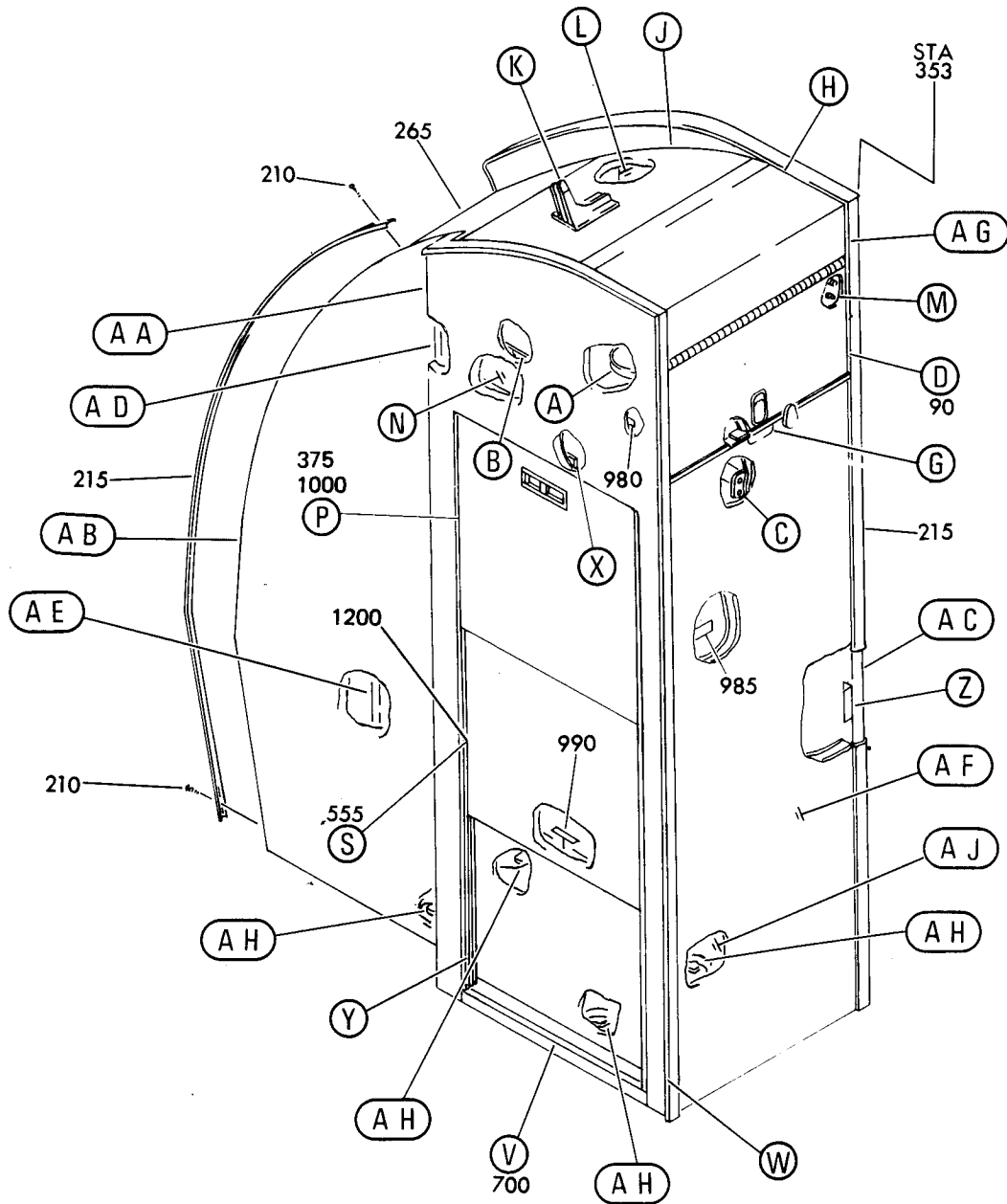


Door Alignment  
Figure 501

OVERHAUL MANUAL

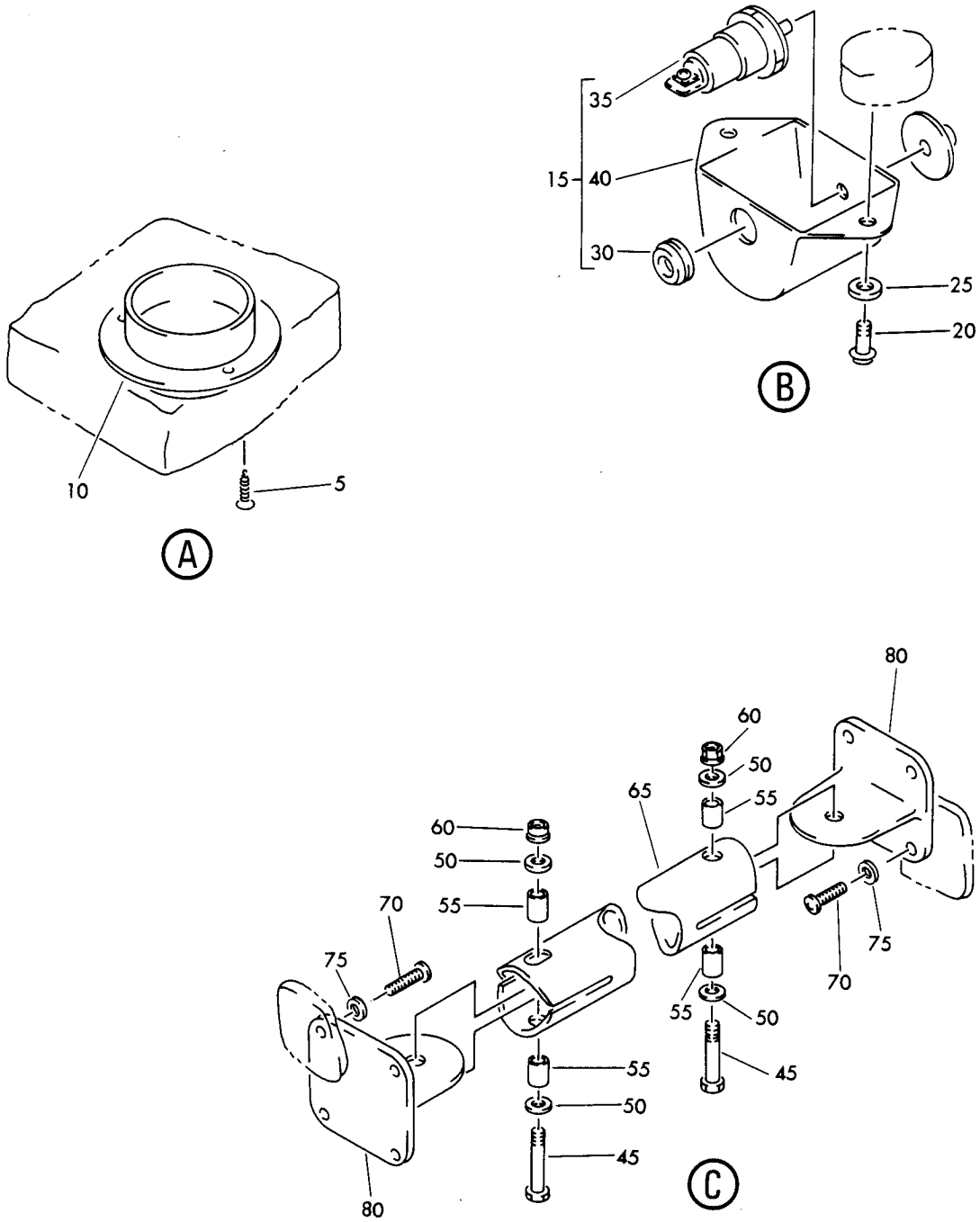


**OVERHAUL MANUAL**



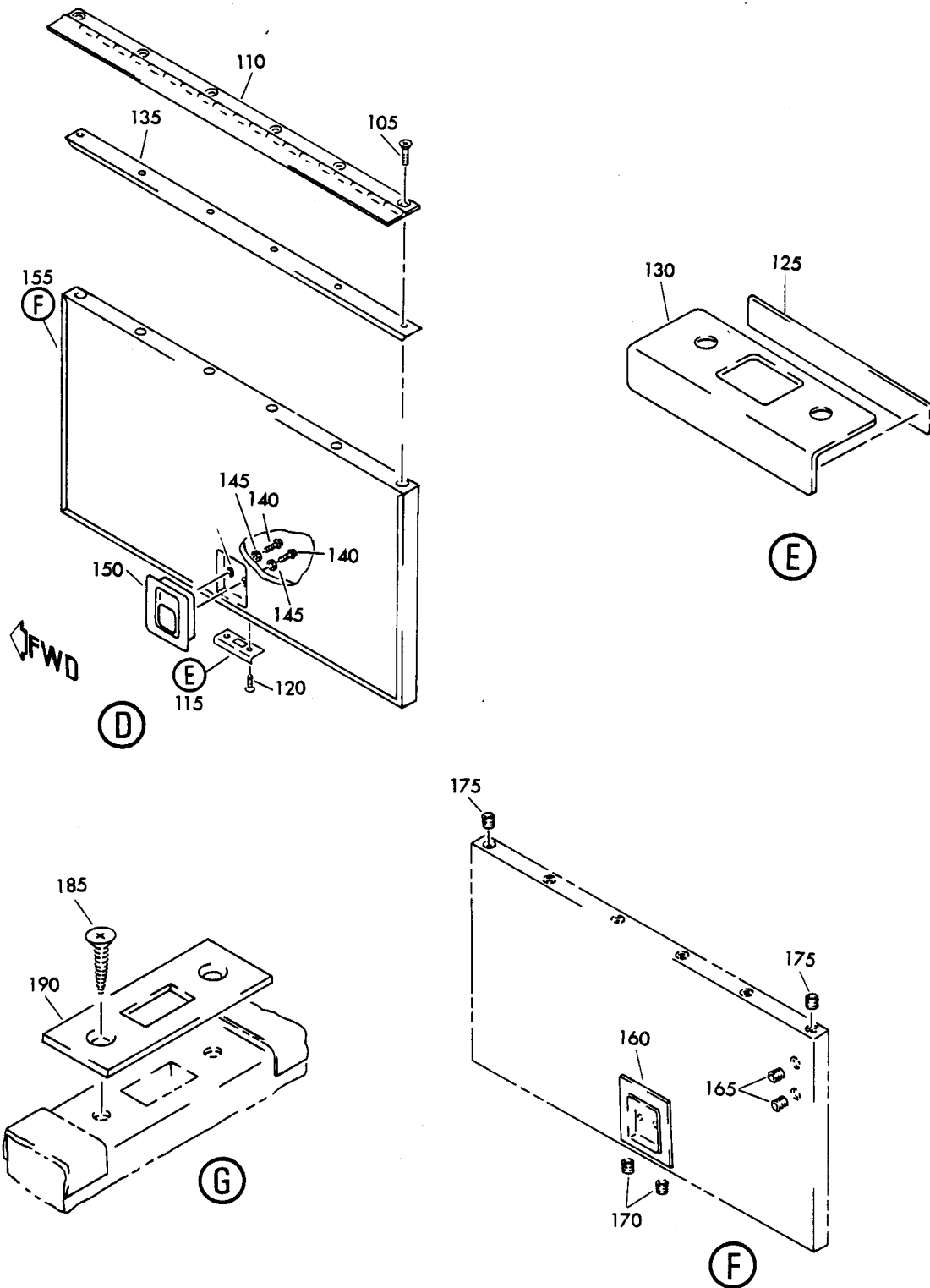
Forward Right Hand Closet Assembly  
Figure 1101 (Sheet 1)

**OVERHAUL MANUAL**



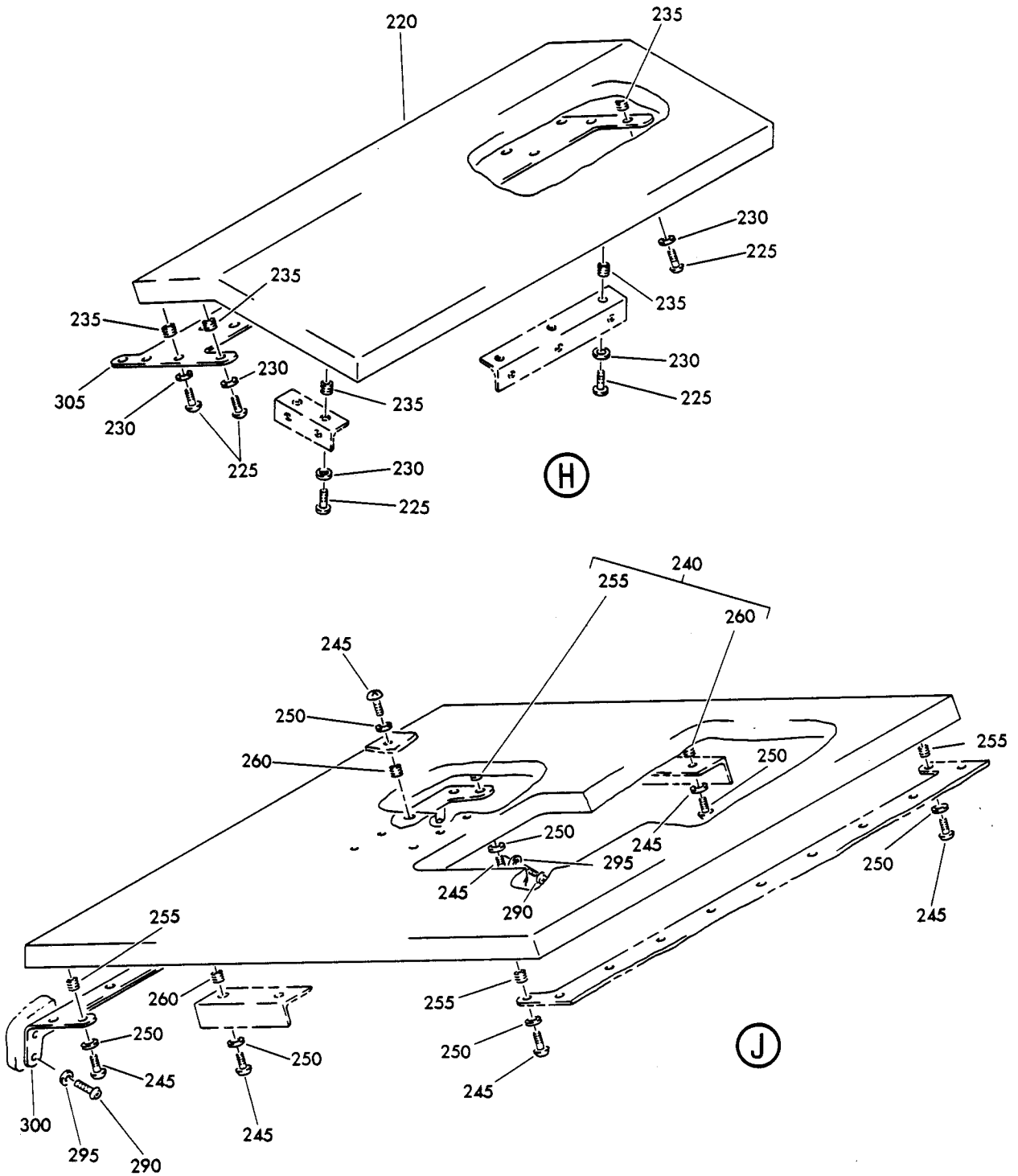
Forward Right Hand Closet Assembly  
Figure 1101 (Sheet 2)

OVERHAUL MANUAL



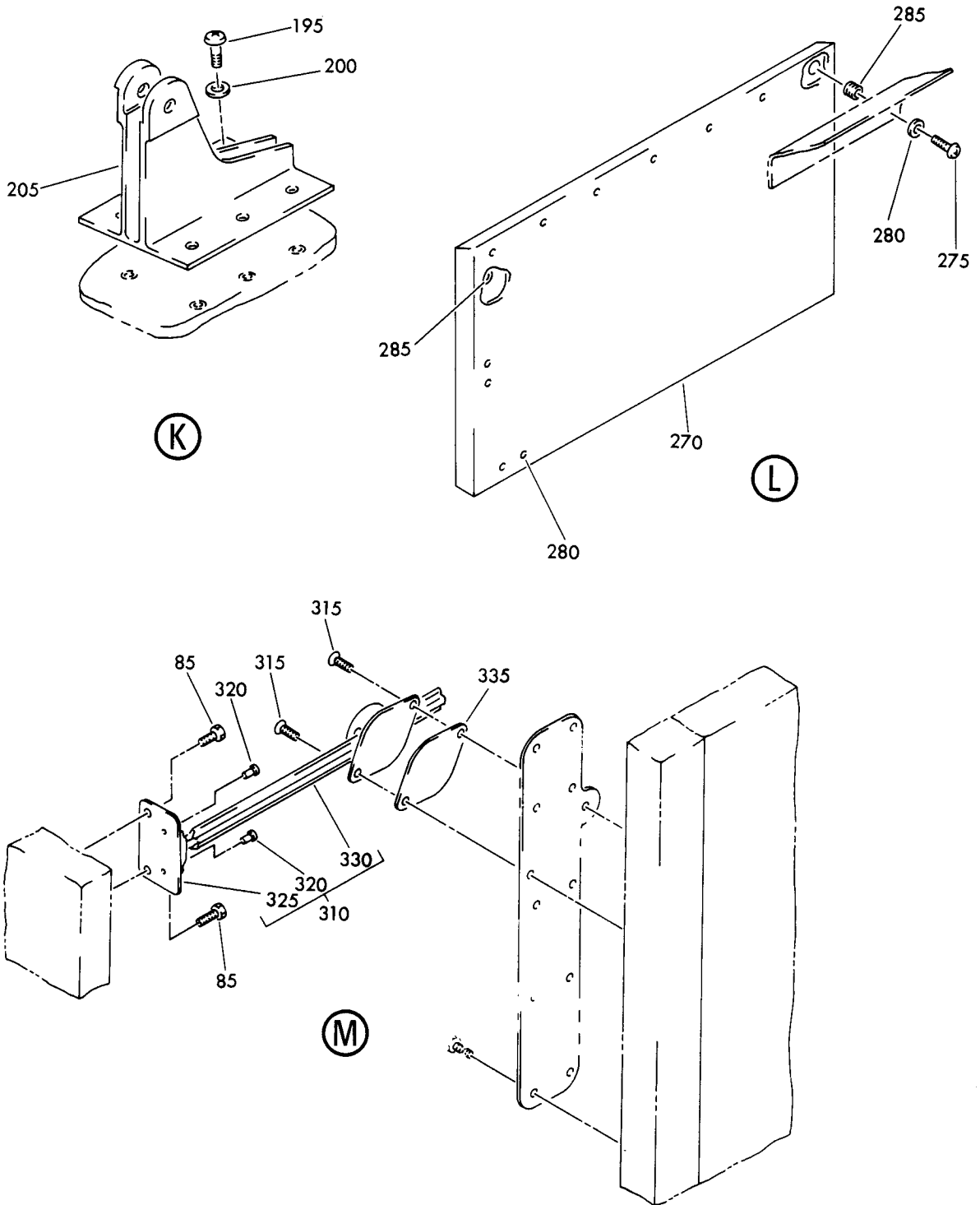
Forward Right Hand Closet Assembly  
Figure 1101 (Sheet 3)

OVERHAUL MANUAL

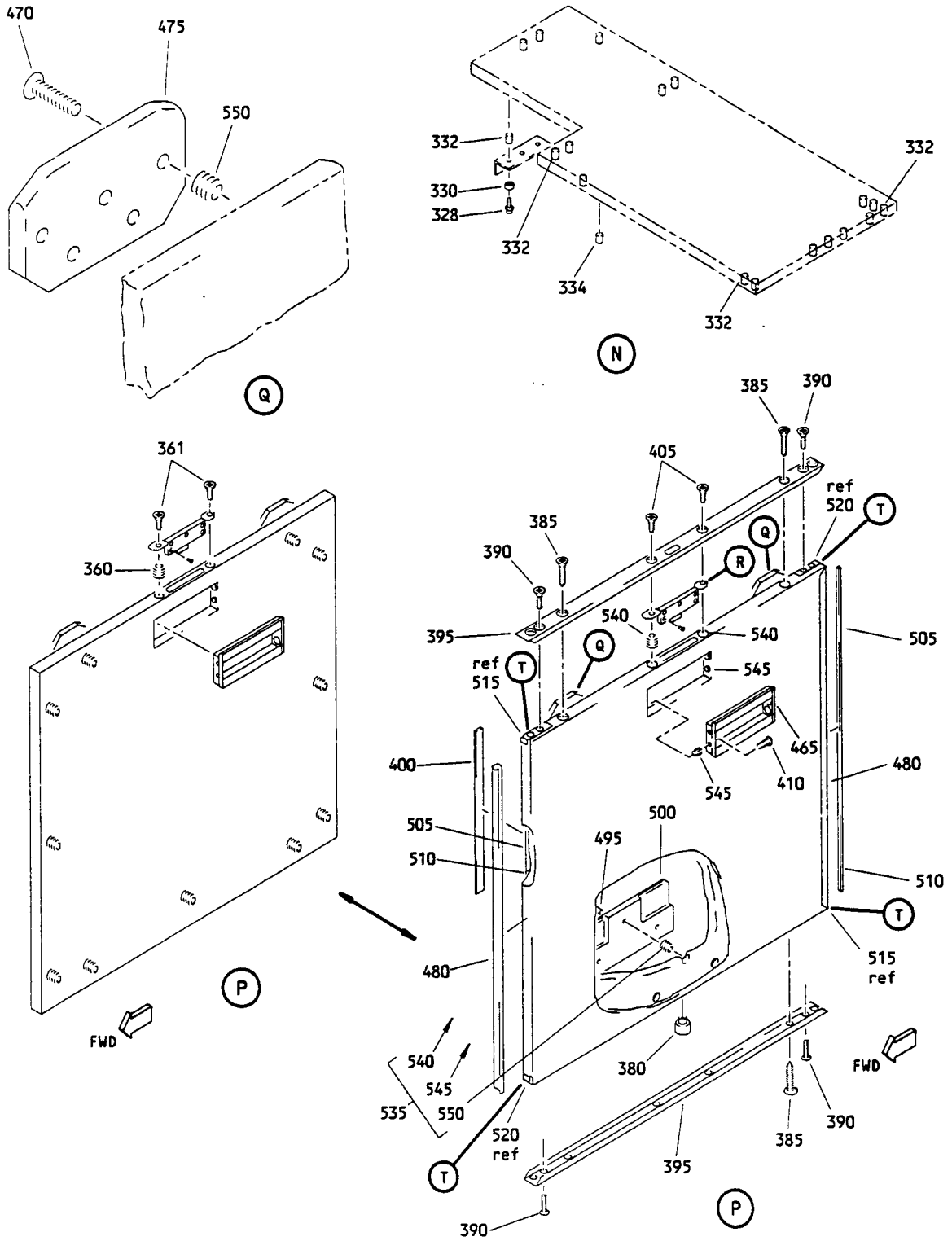


Forward Right Hand Closet Assembly  
Figure 1101 (Sheet 4)

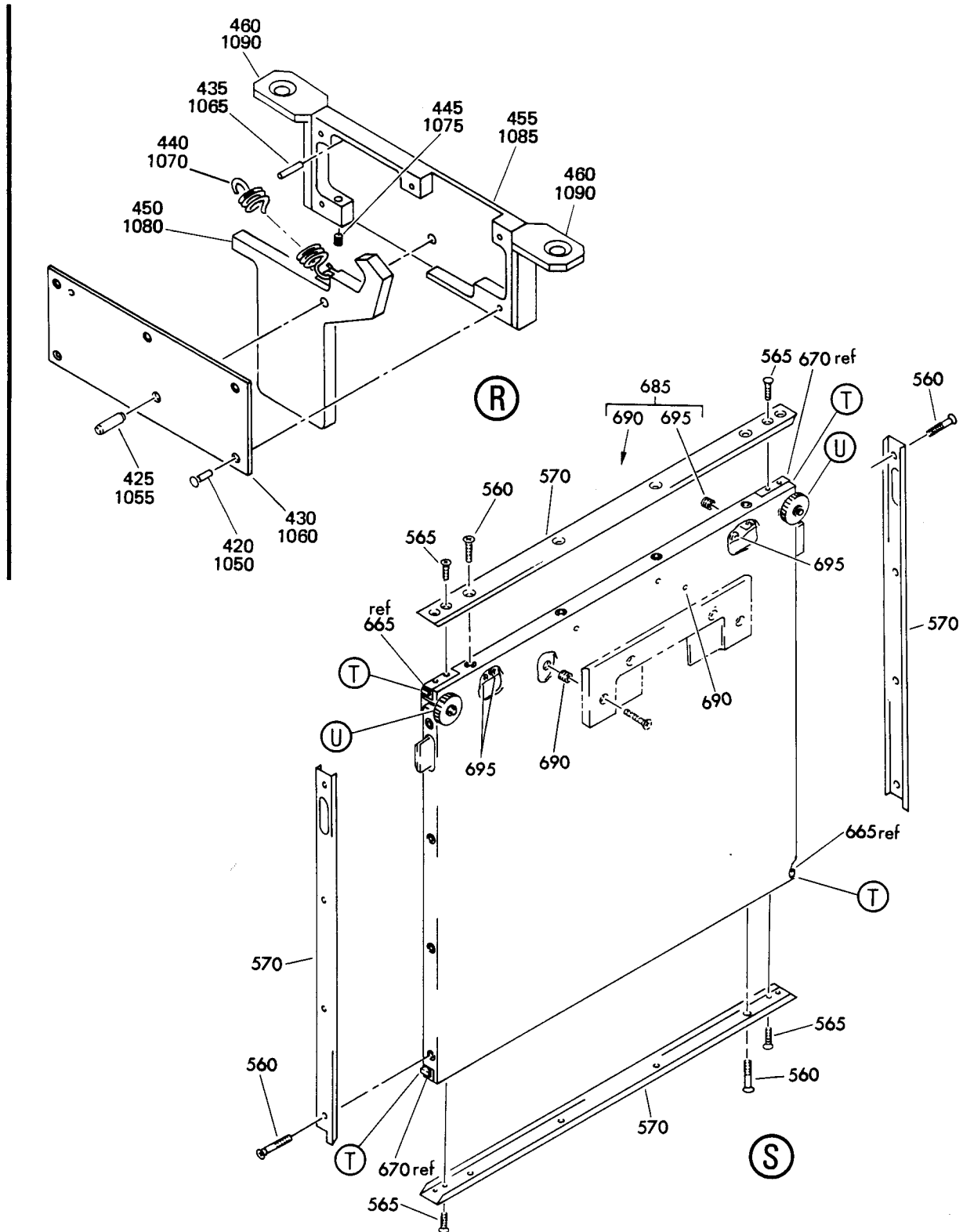
OVERHAUL MANUAL



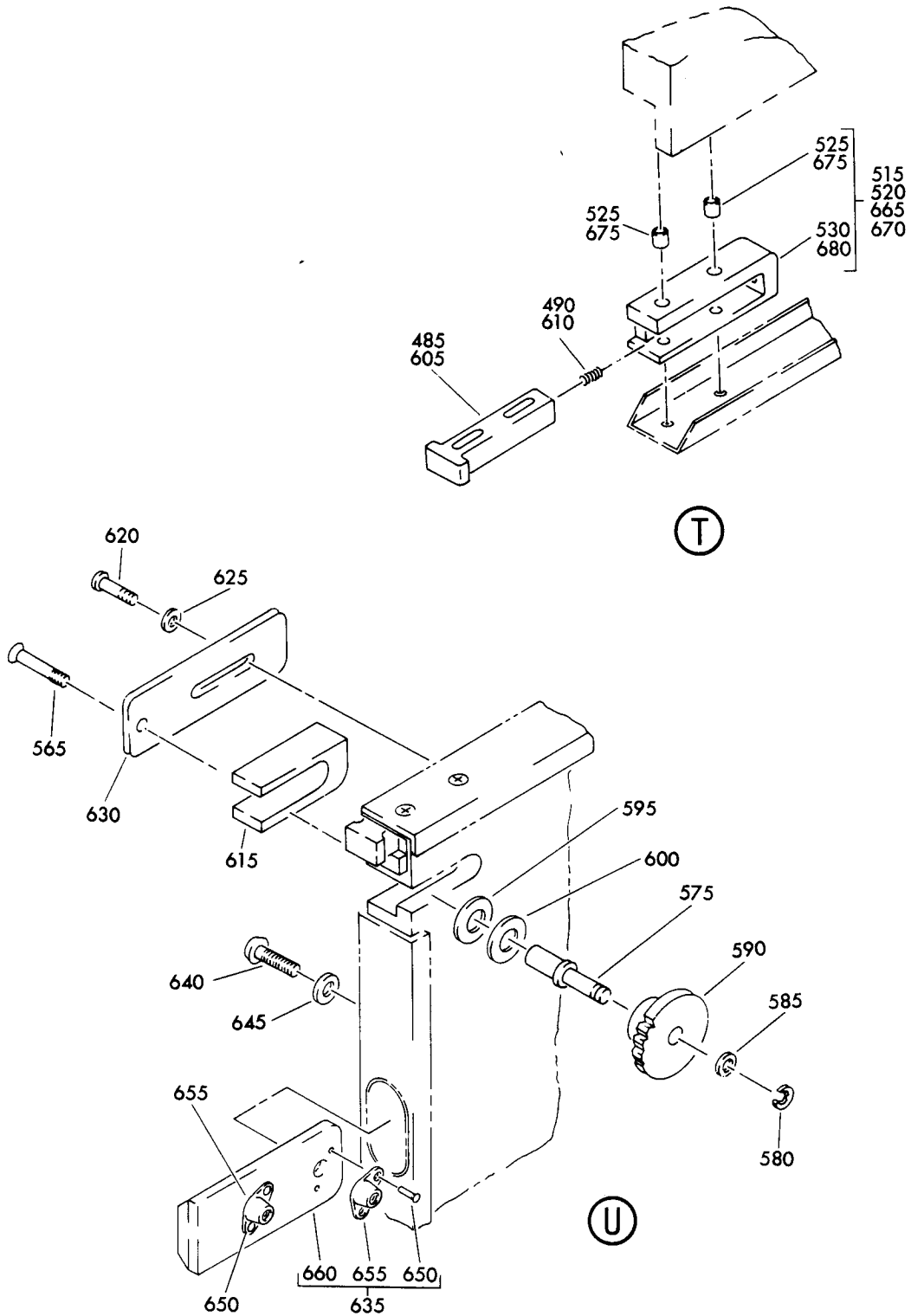




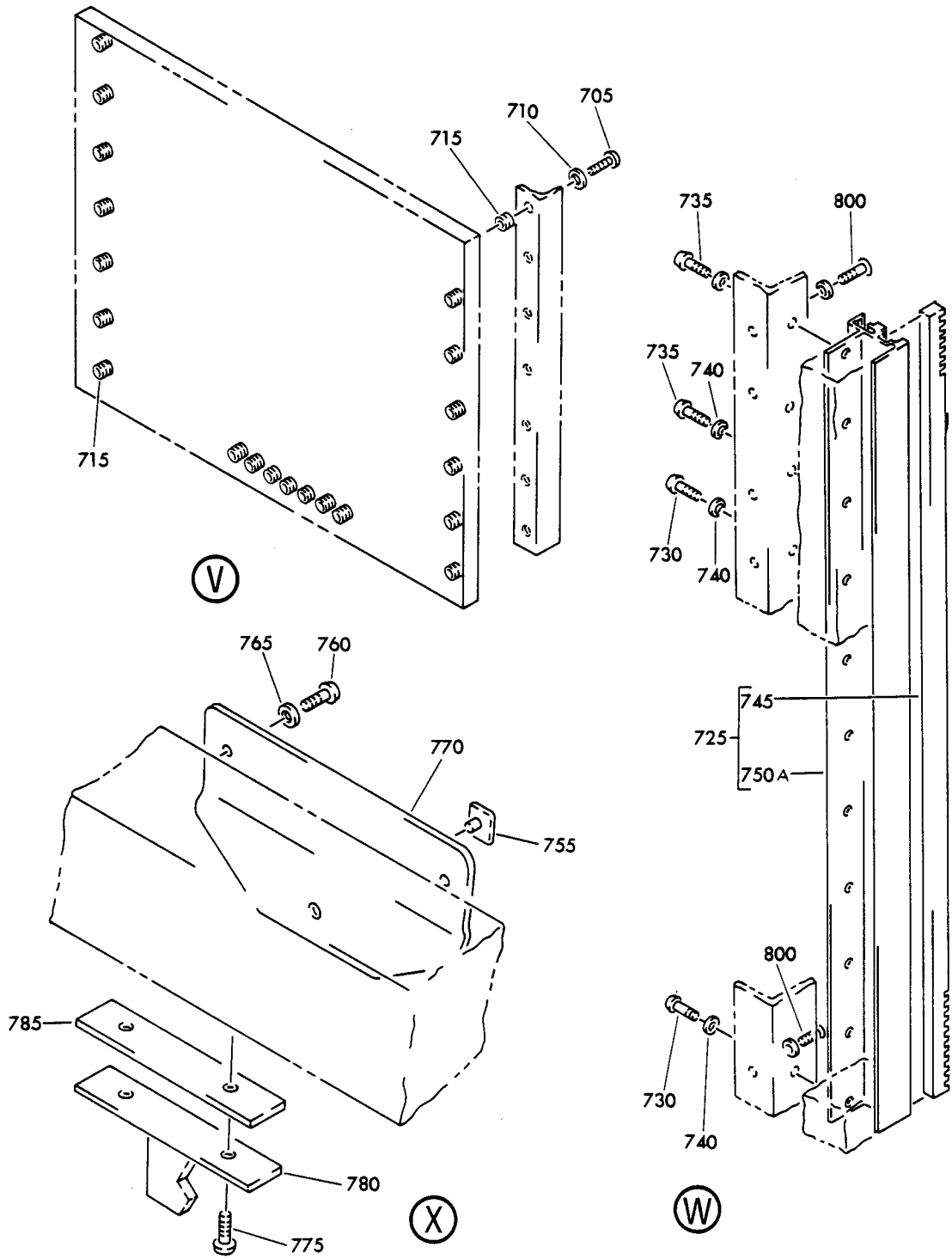
Forward Right Closet Assembly  
 Figure 1101 (Sheet 6)



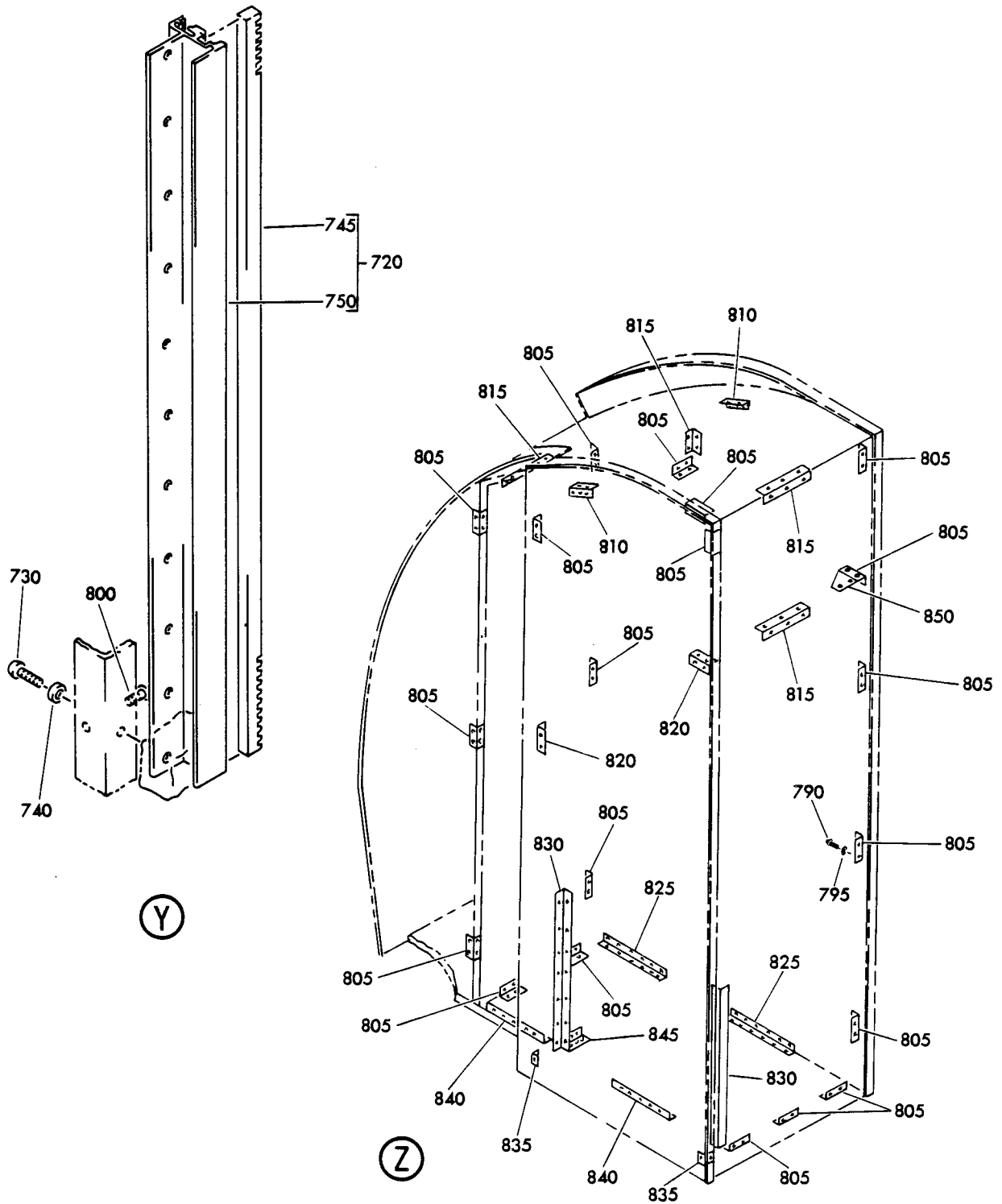
**OVERHAUL MANUAL**



Forward Right Hand Closet Assembly  
 Figure 1101 (Sheet 8)

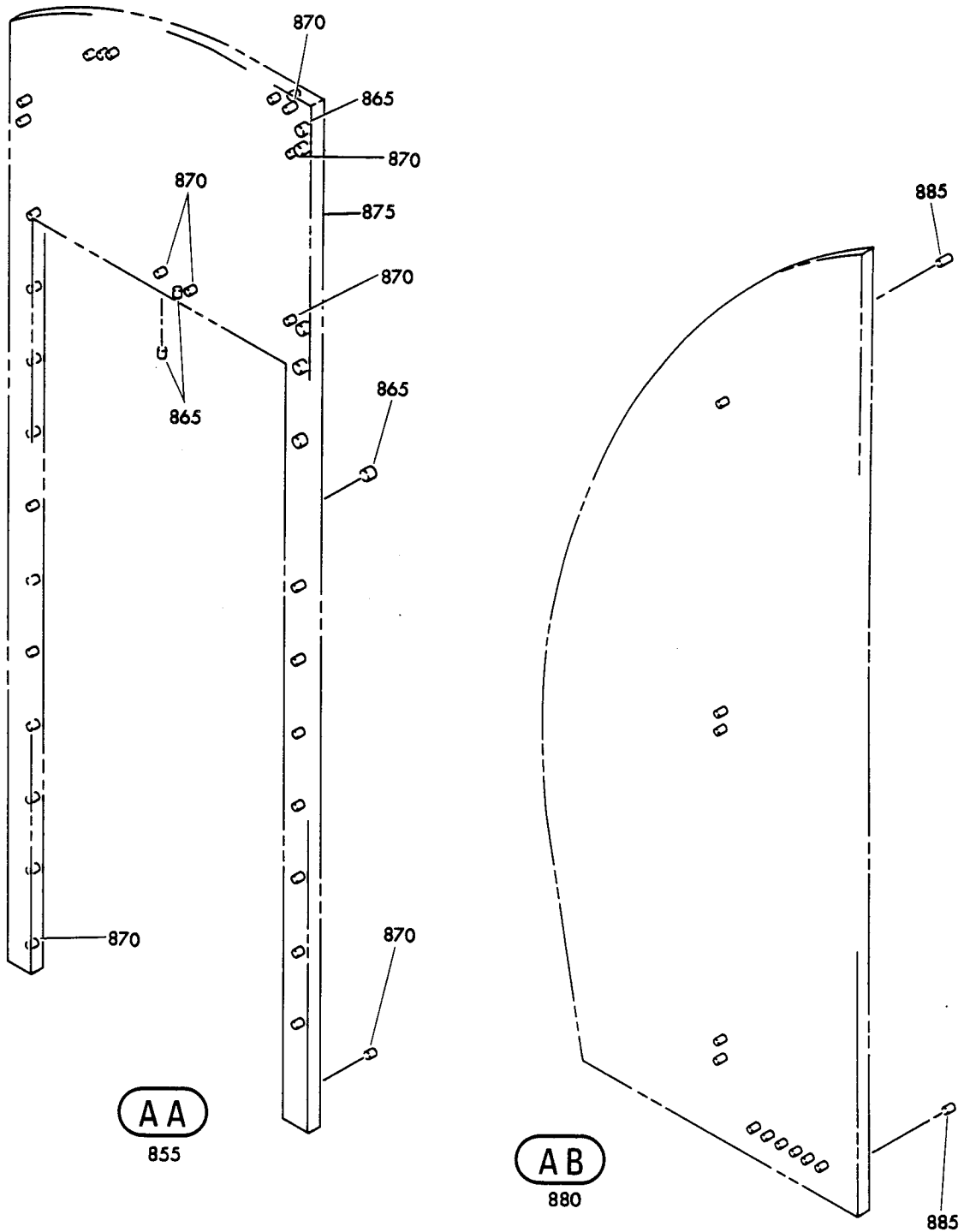


OVERHAUL MANUAL

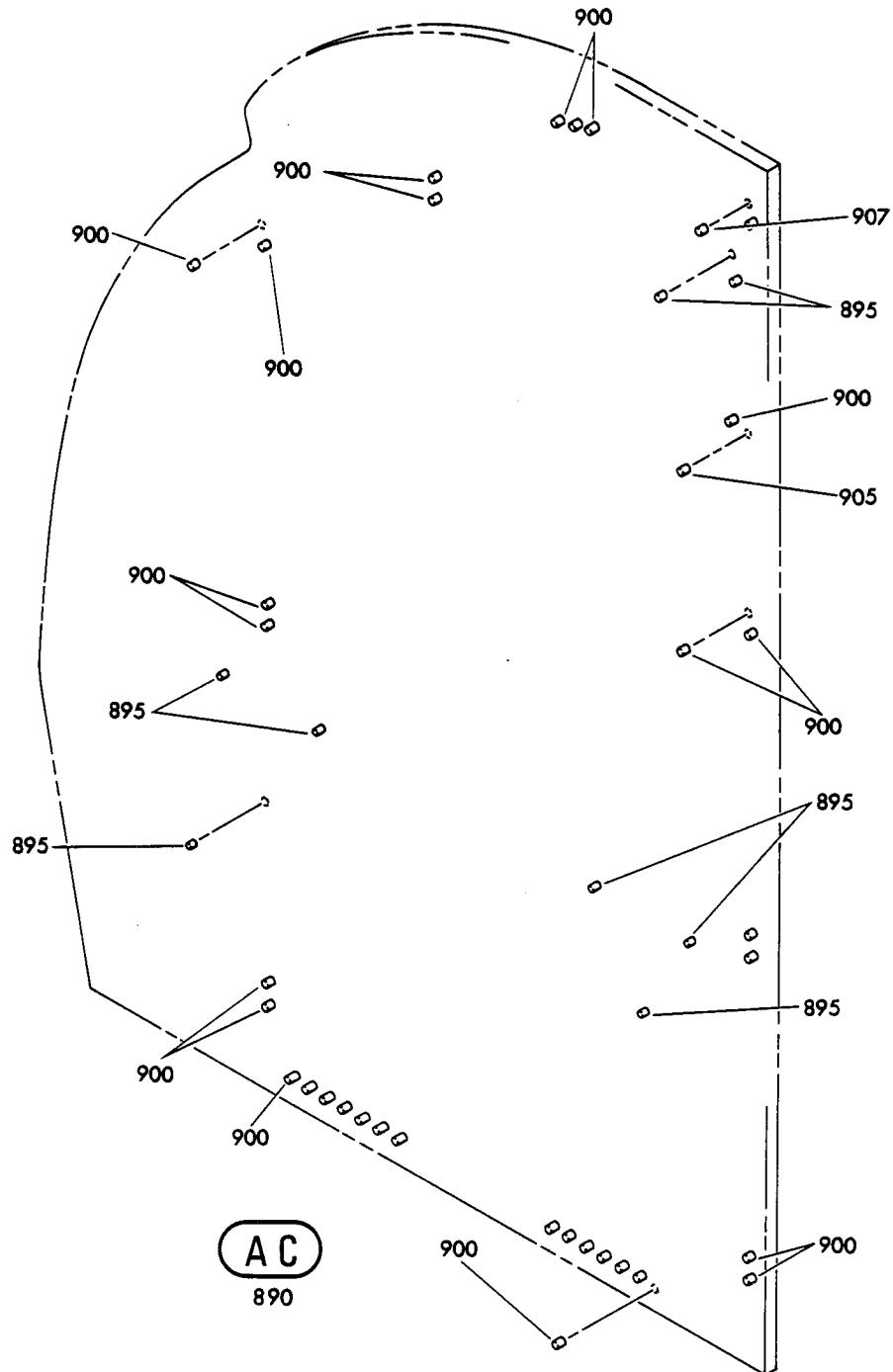


Forward Right Hand Closet Assembly  
Figure 1101 (Sheet 10)

OVERHAUL MANUAL

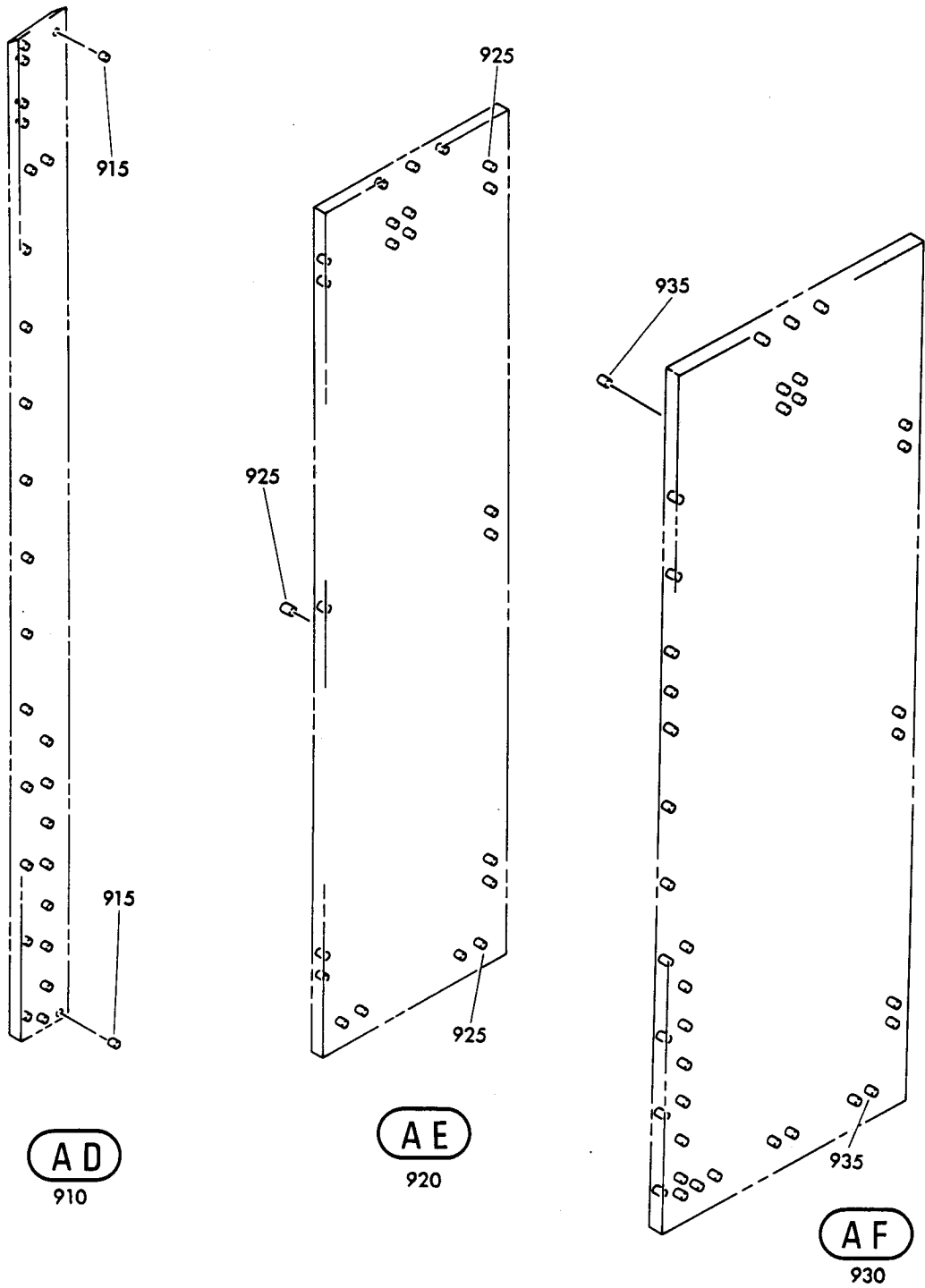


**OVERHAUL MANUAL**



Forward Right Hand Closet Assembly  
Figure 1101 (Sheet 12)

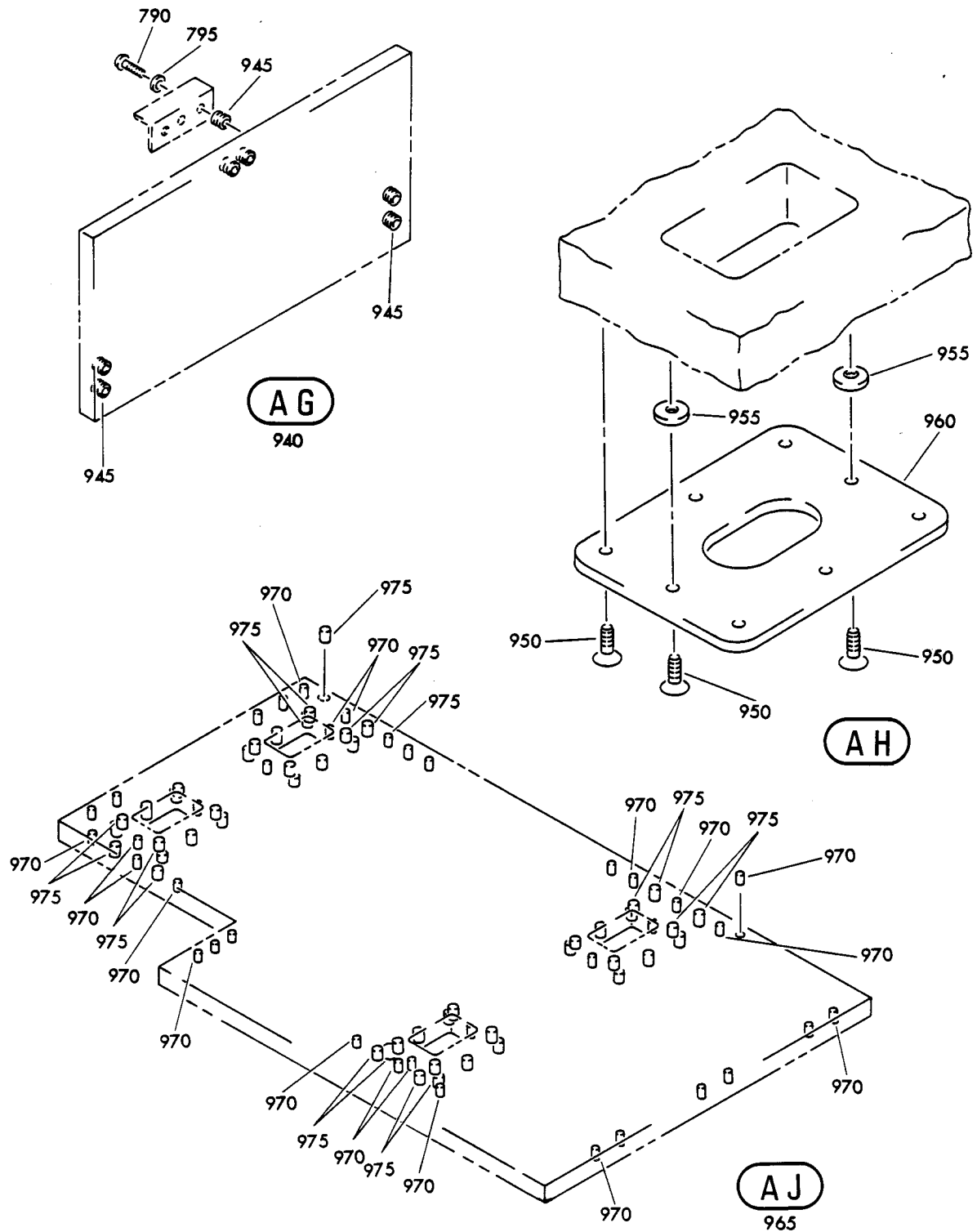
OVERHAUL MANUAL



Forward Right Hand Closet Assembly  
Figure 1101 (Sheet 13)



**OVERHAUL MANUAL**



## OVERHAUL MANUAL

FIG. & ITEM NO.	PART NO.	AIRLINE PART NUMBER	N O M E N C L A T U R E							USE CODE	QTY PER ASSY
			1	2	3	4	5	6	7		
1101											
5	65C27540-1SP PK87XA10-12										RF
10	15-0465-1										3
15	69B51654-1										1
20	NAS602-5P										1
25	AN960KD8L										1
30	NAS557-6A										2
35	L18366-12										2
40	69B51655-1										1
45	BACB30NR4K21										1
50	AN960-416L										2
55	NAS43DD4-38										1
60	MS21042L4										1
65	65-88166-466										1
70	NAS603-6P										8
75	AN960KD10L										8
80	69-17083-3										2
85	NAS603-6P										2
90	65C22246- 259SP										1
105	NAS514P832-5										6
110	65C22246-258										1
115	65C19715-310										1
120	NAS514P832-5										2
125	65C19715-312										1
130	65C19715-311										1
135	65C22246-3										AR
140	NAS602-7P										2
145	AN960PD8L										2
150	SAM222-11										1
155	65C22246-260										1
160	65C10288-7										2
165	SL2334-3A3										2
170	NAS1836-08-12										2
175	SL2334-08A3										6

OVERHAUL MANUAL

FIG. & ITEM NO.	PART NO.	AIRLINE PART NUMBER	N O M E N C L A T U R E							USE CODE	QTY PER ASSY	
			1	2	3	4	5	6	7			
1101												
185	PK87XA6-6		.	S	C	R	E	W	(V45722) (SPEC BACS12H6-6)		2	
									(OPT SK145A6-6) (V73439)			
190	AR131		.	P	L	A	T	E	(V80477)		1	
195	NAS604-5P		.	S	C	R	E	W			6	
200	AN960KD416L		.	W	A	S	H	E	R		6	
205	65C19715-400		.	F	I	T	T	I	N	G, UPR SPRT	1	
210	BACS12H2-8		.	S	C	R	E	W	(OPT ITEM 210A)		AR	
-210A	PK87XA2-6		.	S	C	R	E	W	(V45722) (SPEC BAC12H2-6)		AR	
									(OPT ITEM 210)			
215	65C27540-17		.	T	R	I	M				AR	
220	65C27540-9SP		.	P	A	N	E	L	A	S	S	
									Y, TOP		1	
									A	T	T	
									A	T	T	
									A	T	T	
225	NAS603-5P		.	S	C	R	E	W			16	
230	AN960KD10L		.	W	A	S	H	E	R		16	
235	SL2334-3A3		.	.	.	I	N	S	E	R	T (V97393)	16
240	65C27540-7SP		.	P	A	N	E	L	A	S	S	
									Y, OUTBD		1	
									A	T	T	
									A	T	T	
245	NAS603-5P		.	S	C	R	E	W			33	
250	AN960KD10L		.	W	A	S	H	E	R		33	
255	SL2334-3A3		.	.	.	I	N	S	E	R	T (V97393)	29
260	SL854C3C5C		.	.	.	I	N	S	E	R	T (V97393)	10
265	65C27540-6SP		.	P	A	N	E	L	A	S	S	
									Y, OUTBD		1	
270	65C27540-15SP		.	P	A	N	E	L	A	S	S	
									Y, OUTBD		1	
									A	T	T	
									A	T	T	
275	NAS603-5P		.	S	C	R	E	W			19	
280	AN960KD10L		.	W	A	S	H	E	R		19	
285	SL2334-3A3		.	.	.	I	N	S	E	R	T (V97393)	19
290	NAS603-5P		.	S	C	R	E	W			15	
295	AN960KD10L		.	W	A	S	H	E	R		15	
300	65C20653-86SP		.	B	R	A	C	K	E	T	1	
305	65C20653-87SP		.	B	R	A	C	K	E	T	2	
310	413T3022-1		.	S	U	P	P	O	R	T	A	
									S	S	S	
									Y, DOOR		1	
									A	T	T	
									A	T	T	
315	NAS514P832-12		.	S	C	R	E	W			2	
320	BACR15BA5A		.	.	.	R	I	V	E	T (SIZE DETERMINE ON INST)	2	
325	413T3022-2		.	.	.	P	L	A	T	E	1	
330	SL3579A3		.	.	.	S	U	P	P	O	R	
									T (V97393)		1	
335	413T3022-7		.	S	P	A	C	E	R		1	
340	A35502-7		.	R	E	T	A	I	N	E	R (V52607)	1
345	NAS1836-3-17		.	I	N	S	E	R			1	
350	65C27540-13SP		.	P	A	N	E	L	A	S	S	
									Y, SHELF		1	

## OVERHAUL MANUAL

FIG. & ITEM NO.	PART NO.	AIRLINE PART NUMBER	N O M E N C L A T U R E							USE CODE	QTY PER ASSY
			1	2	3	4	5	6	7		
1101-			ATTACHING PARTS								
355	NAS603-5P		. . SCREW								13
360	AN96OKD10L		. . WASHER								13
			-----*								
365	SL2334-3A3		. . . INSERT (V97393)								13
370	SL2334-08A3		. . . INSERT (V97393)								2
375	413N3615-131SP		. . DOOR ASSY, UPPER (PRE SB 25-1238)								1
			* [1]								
380	301S		. . . PUMPER (V75543)								1
385	PK87XA8-12		. . . SCREW (V45722) (SPEC BACS12H8-12)								AR
			(OPT SK145A8-12) (V73439)								
390	NAS514P632-8		. . . SCREW								8
395	413N3615-50		. . . TRIM								AR
400	413N3615-101		. . . STRIP								AR
405	NAS514P632-3		. . . SCREW								2
410	NAS514P632-4		. . . SCREW								4
415	413N3109-78		. . . LATCH ASSY								1
420	BACR15BA3D		. . . . RIVET (SIZE DETERMINE ON INST)								5
425	69B51600-4		. . . . PIN								1
430	69B51600-2		. . . . COVER								1
435	69B51600-3		. . . . PIN								1
440	MS24586-525		. . . . SPRING								1
445	MS18065-10		. . . . SCREW								1
450	413N3109-79		. . . . CATCH								1
455	69B51629-1		. . . . HOUSING								1
460	413N3109-80		. . . . ANGLE								2
465	413N3211-47		. . . PULL ASSY								1
470	NAS514P1032-8		. . . SCREW								10
475	413N3211-18		. . . PLATE								2
480	413N3211-14		. . . TRIM								2
485	413N3109-77		. . . GUIDE								4
490	MS24585-1063		. . . SPRING								4
495	NAS514P1032-8		. . . SCREW								3
500	413N3211-43		. . . RETAINER								1
505	413N3211-91		. . . RACK, MOLDED								2
510	1M12N24		. . . RACK, MOLDED (V59706)								2
515	413T3046-3		. . . RETAINER ASSY								2
520	413T3046-4		. . . RETAINER ASSY								2
525	MS21209C0610		. . . . INSERT								2
530	413T3046-5		. . . . RETAINER, DOOR GUIDE (USED ON ITEM 515)								2
-530A	413T3046-6		. . . . RETAINER, DOOR GUIDE (USED ON ITEM 520)								2
535	413N3615-132SP		. . . PANEL ASSY								1

**OVERHAUL MANUAL**

FIG. & ITEM NO.	PART NO.	AIRLINE PART NUMBER	N O M E N C L A T U R E							USE CODE	QTY PER ASSY	
			1	2	3	4	5	6	7			
1101-540	NAS1836-06-09		.	.	.	INSERT					2	
545	NAS1836-08-09		.	.	.	INSERT					4	
550	SL2334-3A3		.	.	.	INSERT (V97393)					13	
555	413N3615-129SP		.	DOOR ASSY, LOWER (PRE SB 25-1238)							1	
560	PK87XA8-12		.	[2]								AR
565	NAS14P632-8		.	.	SCREW (V45722) (SPEC BACS12H8-12)							10
570	413N3615-50		.	.	(OPT SK145A8-12) (V73439)							AR
575	413T3046-7		.	.	TRIM							2
580	MS16633-4018		.	.	POST, GEAR							2
585	AN960C10L		.	.	RING							2
590	G8100-1		.	.	WASHER							2
595	AN960KD516		.	.	GEAR, SPUR (V4N374)							2
600	AN960KD516L		.	.	WASHER							2
605	413N3109-77		.	.	WASHER							2
610	MS24585-1063		.	.	GUIDE							4
615	413T3046-1		.	.	SPRING							4
620	NAS603-7P		.	.	GUIDE, GEAR							2
625	AN960KD10L		.	.	SCREW							4
630	413T3046-2		.	.	WASHER							4
635	413N3211-22		.	.	PLATE							2
640	NAS603-7P		.	.	GUIDE ASSY							2
645	AN960KD10L		.	.	ATTACHING PARTS							4
650	BACR15BA3D		.	.	SCREW							4
655	BACN10JP3D		.	.	WASHER							4
660	413N3211-23		-----*									
665	413T3046-3		.	.	RIVET (SIZE DETERMINE ON INST)							4
670	413T3046-4		.	.	NUTPLATE							2
675	MS21209C0610		.	.	GUIDE							1
680	413T3046-5		.	.	RETAINER ASSY							2
-680A	413T3046-6		.	.	RETAINER ASSY							2
685	413N3615-130SP		.	.	INSERT							2
690	SL2334-08A2		.	.	RETAINER, DOOR GUIDE (USED ON ITEM 665)							2
695	SL2334-3A2		.	.	RETAINER, DOOR GUIDE (USED ON ITEM 670)							2
700	65C27540-16SP		.	.	PANEL ASSY							1
705	NAS603-5P		.	.	INSERT (V97393)							4
710	AN960KD10L		.	.	INSERT (V97393)							4
			.	PANEL ASSY, SILL							1	
			.	ATTACHING PARTS								
			.	.	SCREW							21
			.	.	WASHER							21
			-----*									

## OVERHAUL MANUAL

FIG. & ITEM NO.	PART NO.	AIRLINE PART NUMBER	N O M E N C L A T U R E							USE CODE	QTY PER ASSY
			1	2	3	4	5	6	7		
1101-											
715	SL2334-3A3		.	.	INSERT (V97393)						21
720	65C19715-433		.		RAIL ASSY, DOOR (PRE SB 25-1238)						1
					*[3]						
725	65C19715-434		.		RAIL ASSY, DOOR (PRE SB 25-1238)						1
					*[3]						
					ATTACHING PARTS						
730	NAS603-7P		.		SCREW						19
735	NAS603-9P		.		SCREW						3
740	AN96OKD10L		.		WASHER						22
					-----*						
745	1M12N24		.	.	RACK, MOLDED (V59706)						2
750	65C19715-403		.	.	RAIL (USED ON ITEM 720)						1
-750A	65C19715-404		.	.	RAIL (USED ON ITEM 725)						1
755	2055144		.		RETAINER (V04169)						1
760	NAS603-7P		.		SCREW						2
765	AN96OKD10L		.		WASHER						2
770	413T3051-12SP		.		BRACKET						1
775	NAS602-7P		.		SCREW						2
780	69B51630-1		.		STRIKE						1
785	BACS40R4F20F		.		SHIM						1
790	NAS603-5P		.		SCREW						152
795	AN96OKD10L		.		WASHER						152
800	NAS514P1032-6P		.		SCREW						22
805	65C19715-394SP		.		ANGLE						22
810	65C19715-393SP		.		ANGLE						2
815	65C19715-395SP		.		ANGLE						3
820	65C19715-396SP		.		ANGLE						1
825	65C19715-389SP		.		ANGLE						2
830	65C19715-390SP		.		ANGLE						2
835	65C19715-429SP		.		ANGLE						2
840	65C19715-398SP		.		ANGLE						2
845	65C19715-397SP		.		ANGLE						1
850	65C19715-399SP		.		PLATE						1
855	65C27540-2SP		.		PARTITION ASSY, FWD INBD						1
860	NAS1836A08-12		.	.	INSERT						2
865	SL854C3C10C		.	.	INSERT (V97393)						6
870	SL2334-3A3		.	.	INSERT (V97393)						32
875	65C27540-23		.	.	PANEL ASSY						1
880	65C27540-3SP		.		PARTITION ASSY, FWD OUTBD						1
885	SL2334-3A3		.	.	INSERT (V97393)						13
890	65C27540-4SP		.		PARTITION ASSY, AFT						1
895	SL2334-08A3		.	.	INSERT (V97393)						14
900	SL2334-3A3		.	.	INSERT (V97393)						29

**OVERHAUL MANUAL**

FIG. & ITEM NO.	PART NO.	AIRLINE PART NUMBER	N O M E N C L A T U R E							USE CODE	QTY PER ASSY
			1	2	3	4	5	6	7		
1101-											
905	SL854C3C10C		. .							3	
910	65C27540-14SP		. .							1	
915	SL2334-3A3		. .							36	
920	65C27540-5SP		. .							1	
925	SL2334-3A3		. .							23	
920	65C27540-11SP		. .							1	
935	SL2334-3A3		. .							23	
940	65C27540-12SP		. .							1	
945	SL2334-3A3		. .							7	
950	NAS514P1032-7		. .							32	
955	AN960KD10L		. .							8	
960	69-63893-8		. .							4	
965	65C27540-10SP		. .							1	
970	SL2334-3A3		. .							37	
975	SL854C3C5C		. .							48	
980	BAC29PPS0766		. .							1	
985	BAC29PPS0767		. .							1	
990	BAC29PPS0768		. .							1	
-990A	BAC29PPS1433		. .							1	
-995	61-30646		. .							1	
1000	413N3615-338SP		. .							1	
1005	413N3615-6		. .							1	
1010	413N3615-7		. .							1	
1015	413N3615-107		. .							2	
1020	413N3615-81		. .							1	
1025	401T2801-24		. .							1	
1030	401T2801-41		. .							2	
1035	401T2801-43		. .							2	
1040	401T2801-73		. .							1	
1045	413N3109-78		. .							1	
1050	BACR15BA3D		. . .							5	
1055	69B51600-4		. . .							1	
1060	69B51600-2		. . .							1	
1065	69B51600-3		. . .							1	
1070	MS24586-525		. . .							1	
1075	MS18065-10		. . .							1	
1080	413N3109-79		. . .							1	
1085	69B51629-1		. . .							1	
1090	4BN3109-80		. . .							1	
1100	413T3004-4		. .							1	
1105	413T3004-9		. .							1	
1110	413T3004-2		. . .							2	
1115	413T3004-3		. . .							1	

## OVERHAUL MANUAL

FIG. & ITEM NO.	PART NO.	AIRLINE PART NUMBER	N O M E N C L A T U R E							USE CODE	QTY PER ASSY
			1	2	3	4	5	6	7		
1101-											
1120	413T3004-6		.	.	.	FOAM (USED ON ITEM 355)					2
1125	NAS1836-06-09		.	.	INSERT						2
1130	NAS514P632-3		.	.	SCREW						2
1135	SL2334-06A3		.	.	INSERT						11
1200	413N3615-339SP		.	DOOR ASSY, LOWER (POST SB 1238)*[2]							1
-1205	413N3615-6		.	.	COVER - INBD						1
-1210	413N3615-7		.	.	COVER - INTR						1
-1215	SL2334-06A3		.	.	INSERT						12
-1220	401T2801-24		.	.	HONEYCOMB CORE						1
-1225	401T2801-41		.	.	FIBERGLASS PREPREG						2
-1230	401T2801-43		.	.	FIBERGLASS PREPREG						2
-1235	401T2801-73		.	.	RIGID URETHANE CORE						1
-1250	GAR1007		.	TRACK ASSY (POST SB 25-1238)*[3]							1
				(V4N374)							
-1255	1005-1-5866		.	.	DOOR TRACK						1
-1260	1005-2-5866		.	.	DOOR TRACK						1
				ATTACHING PARTS							
-1265	NAS601-6P		.	.	SCREW						AR
-1270	NAS601-7P		.	.	SCREW						AR
				-----*							
-1275	1005-3-2036		.	.	TRACK RUNNER						1
-1280	1005-4-2036		.	.	TRACK RUNNER						1
-1285	1005-5-2036		.	.	TRACK RUNNER						1
-1290	1005-6-2036		.	.	TRACK RUNNER						1
-1300	1005-7-2200		.	.	EDGE TRIM						4

- ITEMS NOT ILLUSTRATED

\*[1] FOR PRE SB 25-1238 UPPER DOOR ASSY, SEE ITEM 375. FOR POST SB 25-1238 UPPER DOOR ASSY, SEE ITEM 1000.

\*[2] FOR PRE SB 25-1238 LOWER DOOR ASSY, SEE ITEM 555. FOR POST SB 25-1238 LOWER DOOR ASSY, SEE ITEM 1200.

\*[3] FOR PRE SB 25-1238 TRACK ASSY, SEE ITEM 720, 725. FOR POST SB 25-1238 TRACK ASSY, SEE ITEM 1250.





## OVERHAUL MANUAL

VENDORS

V04169 WESTERN SKY INDUSTRIES, A DIV OF ATLAS CORP., 21300 CLOUD WAY,  
HAYWARD, CALIFORNIA 94545

V06710 VALLEY-TODECO INCORPORATED, 12975 BRADLEY AVENUE, SYLMAR,  
CALIFORNIA 91342

V06725 AIR INDUSTRIES CORPORATION, 12570 KNOTT STREET, GARDEN GROVE,  
CALIFORNIA 92641

V06950 SCREWCORP VSI CORP, AEROSPACE PRODUCT DIV, FAIRCHILD IND. INC.,  
8463 HIGUERA STREET, P.O. BOX 730, CULVER CITY, CALIFORNIA 90232

V17744 GULTON INDUSTRIES INC., LUMINATOR DIV, 1200 E. DALLAS N, PARKWAY,  
PLANO, TEXAS 75074

V27624 PAUL R BRILES INC., P.B. FASTENER DIV., 1700 WEST 132ND STREET,  
P.O. BOX 1157, GARDENA, CALIFORNIA 90249

V31845 SEALTH AERO-MARINE INC., 641-43 WEST EWING STREET, SEATTLE,  
WASHINGTON 98119

V45722 USM CORP. PARKER-KALON FASTENER DIV., CAMPBELLSVILLE, KENTUCKY  
42718

V4N374 MARKING MASTER, P.O. BOX 675, ISSAQUAH, WASHINGTON 98027

V52607 ACTRON MANUFACTURING INC., 3800 EAST MIRA LOMA AVENUE, ANAHEIM,  
CALIFORNIA 92806

V56878 SPS TECHNOLOGIES INC., HIGHLAND AVENUE, JENKINTOWN, PENNSYLVANIA  
19046

V59706 HOME RUBBER COMPANY, 31 WOOLVERTON AVENUE, TRENTON, NEW JERSEY  
08611

V72914 MIDLAND-ROSS CORP., GRIME DIV., 550 STATE ROUTE 55 P.O. BOX 247,  
CHAMPAIGN COUNTY, URBANA, OHIO 43078

V73197 HI-SHEAR CORPORATION, 2600 SKYPARK DRIVE, TORRANCE, CALIFORNIA  
90509

V73439 TEXTRON INC., CAMCAR DIV., AMERICAN SCREW CO., 345 EAST MARSHALL  
STREET, WYTHEVILLE, VIRGINIA 24382

V75543 LAVELLE INDUSTRIES INC., 424 NORTH WOOD STREET, CHICAGO, ILLINOIS  
60622

V80477 ADAM RITE PRODUCTS INC., DIV OF MZZM INC., 540 WEST CHEY CHASE  
DRIVE, P.O. BOX 800, GLENDALE, CALIFORNIA 91204

OVERHAUL MANUAL

VENDORS

- V80539 SPS TECHNOLOGIES INC., AERO SPACE PRODUCT DIV., 2701 SOUTH HARBOR BOULEVARD, P.O. BOX 1259, SANTA ANA, CALIFORNIA 92702
- V92215 VOI-SHAN DIV OF VSI CORP., SUB OF FAIRCHILD INDUSTRIAL INC., 8463 HIGUERA STREET, CULVER CITY, CALIFORNIA 90230
- V93907 TEXTRON INC, CAMCAR DIV., 600 18TH AVENUE, ROCKFORD, ILLINOIS 61101
- V97393 SHUR-LOK CORPORATION, 2541 WHITE ROAD, P.O. BOX 19584, IRVINE, CALIFORNIA 92713
- V97928 LITTON FASTENING SYSTEMS, DIV. OF LITTON SYSTEMS INC., 3969 PARAMONT BOULEVARD, LAKEWOOD, CALIFORNIA 90712

## OVERHAUL MANUAL

Part No.	Fig. and Index No.	Qty per. Assy	Part No.	Fig. and Index No.	Qty per. Assy
A35502-7	1101-340	1	NAS14P632-8	1101-565	10
AN960-416L	1101-50	4	NAS1836-06-09	1101-540	2
AN960C10L	1101-585	2	NAS1836-08-09	1101-545	4
AN960KD10L	1101-75	8	NAS1836-08-12	1101-170	2
AN960KD10L	1101-230	16	NAS1836-3-17	1101-345	1
AN960KD10L	1101-250	33	NAS1836A08-12	1101-860	2
AN960KD10L	1101-280	19	NAS43DD4-38	1101-55	4
AN960KD10L	1101-295	15	NAS514P1032-6P	1101-800	22
AN960KD10L	1101-360	13	NAS514P1032-7	1101-950	32
AN960KD10L	1101-625	4	NAS514P1032-8	1101-470	10
AN960KD10L	1101-645	4	NAS514P1032-8	1101-495	3
AN960KD10L	1101-710	21	NAS514P632-3	1101-405	2
AN960KD10L	1101-740	22	NAS514P632-4	1101-410	4
AN960KD10L	1101-765	2	NAS514P632-8	1101-390	8
AN960KD10L	1101-795	152	NAS514P832-12	1101-315	2
AN960KD10L	1101-955	8	NAS514P832-5	1101-105	6
AN960KD416L	1101-200	6	NAS514P832-5	1101-120	2
AN960KD516	1101-595	2	NAS557-6A	1101-30	1
AN960KD516L	1101-600	2	NAS602-5P	1101-20	2
AN960KD8L	1101-25	2	NAS602-7P	1101-140	2
AN960PD8L	1101-145	2	NAS602-7P	1101-775	2
AR131	1101-190	1	NAS603-5P	1101-225	16
			NAS603-5P	1101-245	33
BAC29PPS0766	1101-980	1	NAS603-5P	1101-275	19
BAC29PPS0767	1101-985	1	NAS603-5P	1101-290	15
BAC29PPS0768	1101-990	1	NAS603-5P	1101-355	13
BAC29PPS1433	1101-990A	1	NAS603-5P	1101-705	21
BACB30NR4K21	1101-45	2	NAS603-5P	1101-790	152
BACN10JP3D	1101-655	2	NAS603-6P	1101-70	8
BACR15BA3D	1101-420	5	NAS603-6P	1101-85	2
BACR15BA3D	1101-650	4	NAS603-7P	1101-620	4
BACR15BA5A	1101-320	2	NAS603-7P	1101-640	4
BACS12H2-8	1101-210	AR	NAS603-7P	1101-730	19
BACS40R4F20F	1101-785	1	NAS603-7P	1101-760	2
			NAS603-9P	1101-735	3
G8100-1	1101-590	2	NAS604-5P	1101-195	6
L18366-12	1101-35	1	PK87XA10-12	1101-5	3
			PK87XA2-6	1101-210A	AR
MS16633-4018	1101-580	2	PK87XA6-6	1101-185	2
MS18065-10	1101-445	1	PK87XA8-12	1101-385	AR
MS21042L4	1101-60	2	PK87XA8-12	1101-560	AR
MS21209C0610	1101-525	2			
MS21209C0610	1101-675	2			
MS24585-1063	1101-490	4			
MS24585-1063	1101-610	4			
MS24586-525	1101-440	1			

**OVERHAUL MANUAL**

Part No.	Fig. and Index No.	Qty per. Assy	Part No.	Fig. and Index No.	Qty per. Assy
SAM222-11	1101-150	1	413N3615-101	1101-400	AR
SL2334-08A2	1101-690	4	413N3615-129SP	1101-555	1
SL2334-08A3	1101-175	6	413N3615-130SP	1101-685	1
SL2334-08A3	1101-370	2	413N3615-131SP	1101-375	1
SL2334-08A3	1101-895	14	413N3615-132SP	1101-535	1
SL2334-3A2	1101-695	4	413N3615-50	1101-395	AR
SL2334-3A3	1101-165	2	413N3615-50	1101-570	AR
SL2334-3A3	1101-235	16	413T3022-1	1101-310	1
SL2334-3A3	1101-255	29	413T3022-2	1101-325	1
SL2334-3A3	1101-285	19	413T3022-7	1101-335	1
SL2334-3A3	1101-365	13	413T3046-1	1101-615	2
SL2334-3A3	1101-550	13	413T3046-2	1101-630	2
SL2334-3A3	1101-715	21	413T3046-3	1101-515	2
SL2334-3A3	1101-870	32	413T3046-3	1101-665	2
SL2334-3A3	1101-885	13	413T3046-4	1101-520	2
SL2334-3A3	1101-900	29	413T3046-4	1101-670	2
SL2334-3A3	1101-915	36	413T3046-5	1101-530	2
SL2334-3A3	1101-925	23	413T3046-5	1101-680	2
SL2334-3A3	1101-935	23	413T3046-6	1101-530A	2
SL2334-3A3	1101-945	7	413T3046-6	1101-680A	2
SL2334-3A3	1101-970	37	413T3046-7	1101-575	2
SL3579A3	1101-330	1	413T3051-12SP	1101-770	1
SL854C3C10C	1101-865	6	61-30646	1101-995	1
SL854C3C10C	1101-905	3	65-88166-466	1101-65	1
SL854C3C5C	1101-260	10	65C10288-7	1101-160	2
SL854C3C5C	1101-975	48	65C19715-310	1101-115	1
1M12N24	1101-510	2	65C19715-311	1101-130	1
1M12N24	1101-745	2	65C19715-312	1101-125	1
2055144	1101-755	1	65C19715-389SP	1101-825	2
301S	1101-380	1	65C19715-390SP	1101-830	2
15-0465-1	1101-10	1	65C19715-393SP	1101-810	2
413N3109-77	1101-485	4	65C19715-394SP	1101-805	22
413N3109-77	1101-605	4	65C19715-395SP	1101-810	3
413N3109-78	1101-415	1	65C19715-396SP	1101-820	1
413N3109-79	1101-450	1	65C19715-397SP	1101-845	1
413N3109-80	1101-460	2	65C19715-398SP	1101-840	2
413N3211-14	1101-480	2	65C19715-399SP	1101-850	1
413N3211-18	1101-475	2	65C19715-400	1101-205	1
413N3211-22	1101-635	2	65C19715-403	1101-750	1
413N3211-23	1101-660	1	65C19715-404	1101-750A	1
413N3211-43	1101-500	1	65C19715-429SP	1101-835	2
413N3211-47	1101-465	1	65C19715-433	1101-720	1
413N3211-91	1101-505	2	65C19715-434	1101-725	1
			65C20653-86SP	1101-300	1
			65C20653-87SP	1101-305	2

## OVERHAUL MANUAL

Part No.	Fig. and Index No.	Qty per. Assy	Part No.	Fig. and Index No.	Qty per. Assy
65C22246-3	1101-135	AR			
65C22246-258	1101-110	1			
65C22246-259SP	1101-90	1			
65C22246-260	1101-155	1			
65C27540-1SP	1101-	RF			
65C27540-23	1101-875	1			
65C27540-2SP	1101-855	1			
65C27540-3SP	1101-880	1			
65C27540-4SP	1101-890	1			
65C27540-5SP	1101-920	1			
65C27540-6SP	1101-265	1			
65C27540-7SP	1101-240	1			
65C27540-9SP	1101-220	1			
65C27540-10SP	1101-965	1			
65C27540-11SP	1101-920	1			
65C27540-12SP	1101-940	1			
65C27540-13SP	1101-350	1			
65C27540-14SP	1101-910	1			
65C27540-15SP	1101-270	1			
65C27540-16SP	1101-700	1			
65C27540-17	1101-215	AR			
69-17083-3	1101-80	2			
69-63893-8	1101-960	4			
69B51600-2	1101-430	1			
69B51600-3	1101-435	1			
69B51600-4	1101-425	1			
69B51629-1	1101-455	1			
69B51630-1	1101-780	1			
69B51654-1	1101-15	1			
69B51655-1	1101-40	1			