

PALLETIZED CARGO SYSTEM SIDE RESTRAINT GUIDE ASSEMBLY

25-56-22

I BOEING P/N 65-37244-1, thru -4, -7, -9, -11, -12, -21 thru -27, -29
65-80213-7, -15, -20

AIRLINE P/N

THE FOLLOWING DIRECTIVES APPLY TO THIS SUBJECT:

BOEING SERVICE BULLETIN	BOEING TEMPORARY REVISION	OTHER DIRECTIVES	DATE DIRECTIVE INCORPORATED INTO TEXT
		PRR 15460-9	Feb 15/69
		PRR 15719	Feb 15/69
2078, Rev 1 (707)		PRR 15818	Feb 15/69
		PRR 15833	Feb 15/69
2247 (707)		PRR 15845	Feb 15/69
2280 (707)		PRR 16290-1	Feb 15/69
		PRR 16290-2	Feb 15/69
		MC 1554-10R	Feb 15/69
2032 (707)		PRR 15460-16	Jun 10/72
2137 (707)		PRR 15749-4R	Jun 10/72
2133 (707)		PRR 15821	Jun 10/72
2093 (707)			Jun 10/72
2134 (707)			Jun 10/72
2135 (707)			Jun 10/72
2136 (707)			Jun 10/72
2967 (707)		MC 1781-3R	Jun 10/72
3006 (707)		MC 1781-6R	Jun 10/72

BOEING 
COMMERCIAL JET
OVERHAUL MANUAL

LIST OF EFFECTIVE PAGES

* Indicates pages revised, added or deleted in latest revision

F Indicates foldout pages - print one side only

PAGE	DATE	PAGE	DATE	PAGE	DATE
25-56-22					
T-1	Jul 5/74				
T-2	BLANK				
* LEP-1	Dec 25/75				
LEP-2	BLANK				
T/C-1	Jul 5/74				
T/C-2	BLANK				
1	Jul 5/74				
2	Jul 5/74				
3	Jul 5/74				
4	Jul 5/74				
* 5	Dec 25/75				
6	Jul 5/74				
7	Jul 5/74				
8	Jul 5/74				
9	Jul 5/74				
10	Jul 5/74				
11	Jul 5/74				
12	Jul 5/74				
13	Jul 5/74				
14	Jul 5/74				
15	Jul 5/74				
16	Jul 5/74				
17	Jul 5/74				
18	Jul 5/74				
19	Jul 5/74				
20	Jul 5/74				

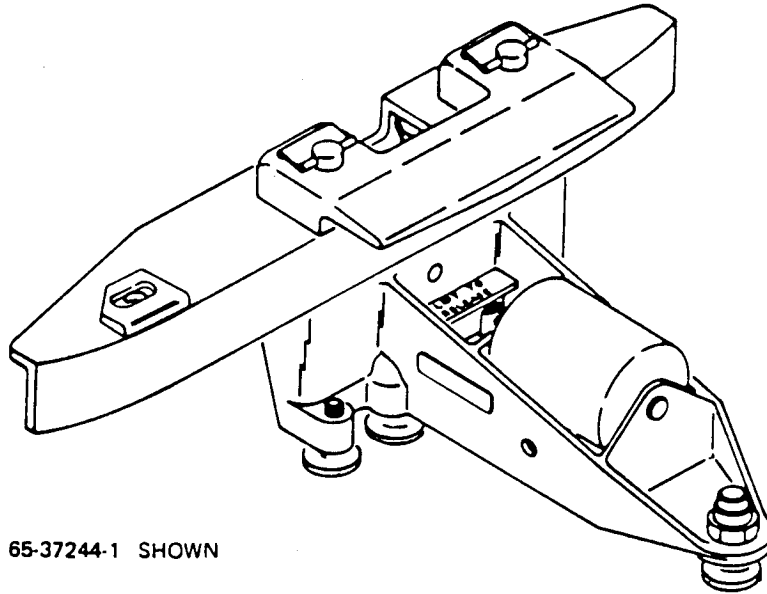
BOEING 
COMMERCIAL JET
OVERHAUL MANUAL

TABLE OF CONTENTS

<u>Paragraph Title</u>	<u>Page</u>
Description and Operation	1
Disassembly	2
Cleaning.	3
Inspection/Check.	3
Repair.	4
Assembly.	7
Fits and Clearances	8
Testing*[1]	
Trouble Shooting.*[1]	
Storage Instructions.*[1]	
Special Tools, Fixtures, and Equipment (not applicable)	
Illustrated Parts List.	9

*[1] Special instructions not required. Use standard industry practices.

PALLETIZED CARGO SYSTEM SIDE RESTRAINT GUIDE ASSEMBLY



65-37244-1 SHOWN

Palletized Cargo System Side Restraint Guide Assembly
Figure 1

1. DESCRIPTION AND OPERATION

- A. The basic palletized cargo system side restraint guide assembly consists of a housing with airplane floor track studs, locking plungers and either a roller or ball assembly. Configurations developed from the basic assembly may include a guide rail or a guide rail and vertical restraint lip. The side restraint guide assemblies may be secured at a number of points along the floor tracks, using the track studs, and locking plungers. When in position, the guides limit side travel of the pallets and the lips restrict vertical movement.

BOEING 
COMMERCIAL JET
OVERHAUL MANUAL

65-37244
65-80213
DASH NUMBERS LIMITED

B. Leading Particulars

Width -- 7.25 inches
Length -- 5 to 11 inches
Height -- 3 to 4 inches
Weight -- (approx) 2 to 3 lbs

2. DISASSEMBLY (Fig. 4)

A. Use standard industry practices for disassembly of this component, and additional procedures in steps B thru D.

B. Assemblies 65-37244-1 thru -4, -7, -9, -22, -25; 65-80213-7, -15

NOTE: Do not remove spacers (12), rivets (13), receptacle assembly (14), and spacer (15) unless necessary for repair or replacement.

CAUTION: SPRING (29) FORCE IS APPROXIMATELY 3 POUNDS.

(1) Remove spring (29).

NOTE: Do not remove marker (32) unless necessary for replacement.

(2) Remove ball assembly (35).

NOTE: Do not remove ball from ball assembly (35).

CAUTION: SPRING (74) FORCE IS APPROXIMATELY 5 POUNDS.

(3) Remove spring (74).

(4) Remove housings (87, 88, 91).

NOTE: Do not remove rivets (84), receptacle assemblies (85), and spacers (80) unless necessary for repair or replacement.

C. Assemblies 65-37244-11, -12

NOTE: Do not remove marker (32) unless necessary for replacement.

(1) Remove roller assembly (66).

NOTE: Do not remove bearings (67) or retainers (68) from roller (69 or 70) unless necessary for repair or replacement.

CAUTION: SPRING (74) FORCE IS APPROXIMATELY 5 POUNDS.

(2) Remove spring (74).

BOEING 
COMMERCIAL JET
OVERHAUL MANUAL

D. Assemblies 65-37244-23, -24, -26, -27, -29; 65-80213-20

CAUTION: SPRING (29) FORCE IS APPROXIMATELY 3 POUNDS.

(1) Remove spring (29).

NOTE: Do not remove marker (32) unless necessary for replacement.

(2) Remove roller assembly (43).

NOTE: Do not remove bearings (44) from roller (45) or bearings (67) and retainers (68) from roller (70) unless necessary for repair or replacement.

CAUTION: SPRING (49) FORCE IS APPROXIMATELY 5 POUNDS.

(3) Remove spring (49).

3. CLEANING (Fig. 4)

NOTE: Refer to 20-30-03 for cleaning all parts using standard shop practices, except as follows:

CAUTION: BEARINGS (44 AND 67) ARE TEFLON-LINED AND MUST BE CLEANED ONLY BY SPECIAL METHOD IN 20-30-01.

A. Clean bearings (44, 67).

CAUTION: DO NOT LUBRICATE BALL ASSEMBLY (35).

B. Flush ball assembly (35) with solvent, P-D-680, or equivalent. Air dry.

NOTE: Check that drain hole in bottom of ball assembly (35) cup is clear of foreign particles.

4. INSPECTION/CHECK (Fig. 4)

A. Check all parts for obvious defects in accordance with standard industry practices.

B. Magnetic/Penetrant Check

(1) Perform magnetic particle examination per 20-20-01 on studs (55, 55A, 57, 80, 82), and shaft (63).

(2) Perform penetrant examination per 20-20-02 on lip (6, 7, 8, 31), guides (10, 16), rail guides (24, 25), ball assembly (35), rollers (45, 69, 70), plungers (48, 73), and housing (58, 87 thru 91).

BOEING 
COMMERCIAL JET
OVERHAUL MANUAL

65-37244
65-80213
DASH NUMBERS LIMITED

C. Spring Checks

- (1) Check springs (29, 49, 74) for load limits per Fig. 2.

Item No. Fig. 4	Approximate Free Length (inches)	Test Length (inches)	Allowable Load Limit (Pounds)
29	0.44	0.247	2.88 to 3.25
49,74	0.62	0.269	4.18 to 5.10

Spring Check Data
Figure 2

- (2) Check that inner angle between two arms of springs (54, 79) is 93 to 97 degrees.

5. REPAIR (Fig. 4)

A. Materials

NOTE: Use listed materials or rquivalent substitutes.

- (1) Adhesive -- Type 38 (20-50-12)
(2) Primer -- BMS 10-11, type 1 (Ref 20-60-02)

B. Rework

- (1) If bolt (40 or 62) or shaft (63) mounting holes (0.2500- to 0.2540-inch diameter) in housing (58 or 87 thru 91) are elongated, line machine holes oversize (0.3750-inch diameter maximum), refinish housings, and install sleeve-type bushings per Fig. 3 made from corrosion resistant steel, 17-4PH per AMS 5355. Holes in both webs should be concentric within 0.005 inch. Repair bushings shall have an interference fit in housing within 0.0002 to 0.0008 inch. Passivate repair bushings per QQ-P-35. Line machine bushings ID to 0.2500 to 0.2540 inch after installation.

BOEING 
COMMERCIAL JET
OVERHAUL MANUAL

C. Refinish

NOTE: Refer to 20-30-02 for stripping of protective finishes and to 20-41-01 for explanation of F and SRF finish codes.

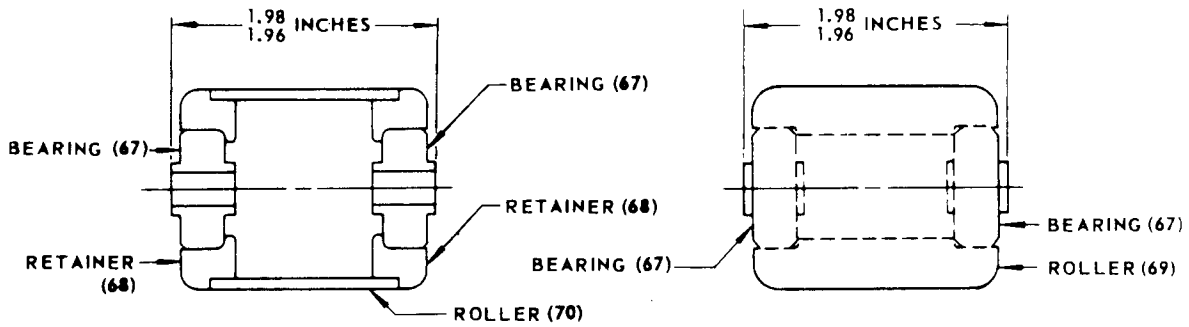
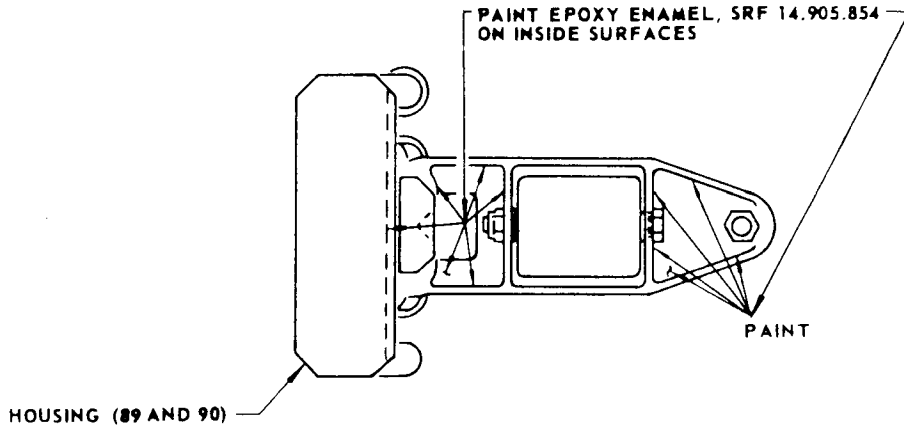
- (1) Guides (10, 16), spacers (12), fillers (23), guide rails (24, 25), plate (36), rollers (45, 69, 70), plungers (43, 73), retainers (68) -- Apply chromic acid anodize (F-2.20) all over. Material: Al Alloy.
- (2) Lifters (47, 72) -- Alodize or chromic acid anodize (F-2.22) and fill depressed letters with unthinned enamel EMS 10-11, type 2, color BAC 701 (black). Material: Al Alloy.
- (3) Spacer (15), radius fillers (53, 78, 86) -- Apply Alodine 1200 or chromic acid anodize (SRF-2.30) all over. Material: Al Alloy.
- (4) Lips (6, 7, 8, 31) -- Apply sulfuric acid anodize (F-2.201) or Alodine 1200 (F-2.21), class A, method 2 all over (dyed red similar to Federal Standard 595 No. 11105). Material: Al Alloy.
- (5) Pin (29) -- Apply dry lubricant EMS 3-8, class A, method 3 to the larger diameter portion per 20-50-08, type 1. Material: CRES 17-4PH, 180-200 ksi.
- (6) Springs (54, 79) -- Apply cadmium plate (F-1.1922) all over. Material: Steel 1095.
- (7) Studs (55, 55A, 57, 80, 82) -- Apply cadmium plate (F-1.1913) all over. Material: Steel AMS 4140, 160-180 ksi.
- (8) Knob (30) -- Apply cadmium plate (F-1.191) all over. Material: Steel AMS 4130.
- (9) Shaft (63) -- Apply cadmium plate (F-1.191) all over. Material: Steel AMS 4140, 180-200 ksi.
- (10) Housing (58, 87, thru 91) -- Passivate (F-8.07) all over. Then apply one coat EMS 10-11, type 2, gloss enamel (SRF-14.905-854) to areas indicated in Fig. 3 prior to plunger installation on housings (89, 90). Material: CRES 17-4PH, 180-200 ksi.

NOTE: Color chip matching not required.

D. Replacement

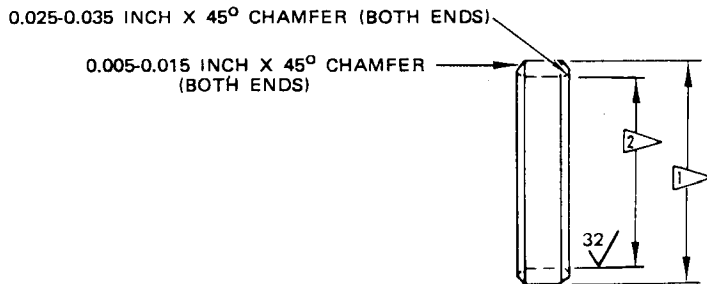
- (1) Replace aluminum foil marker (32) by applying to housing (58, 87 thru 90) per 20-50-05.
- (2) Replace spacers (12) by bonding to guide (16) with type 38 adhesive per 20-50-12.

NOTE: Fifty percent contact is required, measured on periphery of spacer.





ROLLER ASSEMBLY (66)
 (69-29612-1)

ROLLER ASSEMBLY (43 OR 66)
 (69-33944-2)



REWORK BUSHING

- 1  OD DIMENSION SHALL BE AS REQUIRED TO OBTAIN 0.0002-0.0008 INCH INTERFERENCE FIT
- 2  MACHINE 0.0200 INCH SMALLER THAN FINISHED DIAMETER. MACHINE TO FINAL SIZE AFTER INSTALLATION.

Rework and Refinish Diagram
 Figure 3

BOEING 
COMMERCIAL JET
OVERHAUL MANUAL

- (3) Replace bearings (44 or 67) by installing new bearings in rollers (45 and 69) or retainers (68) and pressing into 0.9002- to 0.9007-inch diameter bore in rollers (45 and 69) or 0.9002- to 0.9009-inch diameter bore in retainers (68) per 20-50-03. The overall length of bearing assemblies shall be 1.96 to 1.98 inches with equal bearing protrusion from either end as shown in Fig. 3.
- (4) Replace roller (70) or retainers (68) by pressing retainers into roller bore with wet primer BMS 10-11, type 1.
- (5) Replace receptacle (14 or 85) by carefully drilling out rivets (13 or 84) and removing receptacle (14 or 85) and radius filler (15 or 86). Reinstall serviceable parts and rivet in position.
- (6) Replace washer (22A) by altering AN960PD516 washer for 0.520- to 0.530-inch outside diameter.

6. ASSEMBLY (Fig. 4)

A. Use standard industry practices for assembly of this component, and additional procedures in steps B thru D.

B. Assemblies 65-37244-1 thru -4, -7, -9, -22, -25; 65-80213-7, -15

- (1) Install washers (64).

NOTE: Use washers (64) as required to limit axial motion of roller assembly (66) to 0.02-inch maximum when using bolt (62) and related hardware.

- (2) Install ball assembly (35) in ball attachment plate (36).

NOTE: Check that slots in ball attachment plate (36) align with bolt holes in side of housing (87, 88 or 91).

- (3) Install retainer ring assembly (3) with manufacturing seam upward.

C. Assemblies 65-37244-11, -12

- (1) Install washers (64).

NOTE: Use washers (64) as required to limit the axial motion of roller assembly to 0.02-inch maximum when using bolt (62) and related hardware.

BOEING
COMMERCIAL JET
OVERHAUL MANUAL

65-37244
65-80213
DASH NUMBERS LIMITED

D. Assemblies 65-37244-23, -24, -26, -27, -29; 65-80213-20

(1) Install washers (41).

NOTE: Use washers (41) as required to limit axial motion of roller assembly (43) to 0.02-inch maximum when using bolt (40) and related hardware.

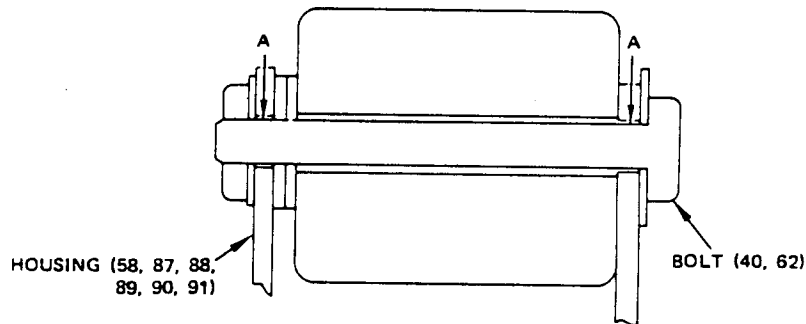
CAUTION: PROTECT PIN (28) DRY FILM LUBRICATED SURFACE FROM DIRT OR MECHANICAL DAMAGE DURING ASSEMBLY.

(2) Install pin (28).

(3) Install washers (21).

NOTE: Washers (21) are installed on pivot side only as required to limit clearance between lip (31) and guide rail (25) to 0.000 to 0.015 inch. Lip assembly (26) must be free to rotate after tightening pivot bolt (19).

7. FITS AND CLEARANCES

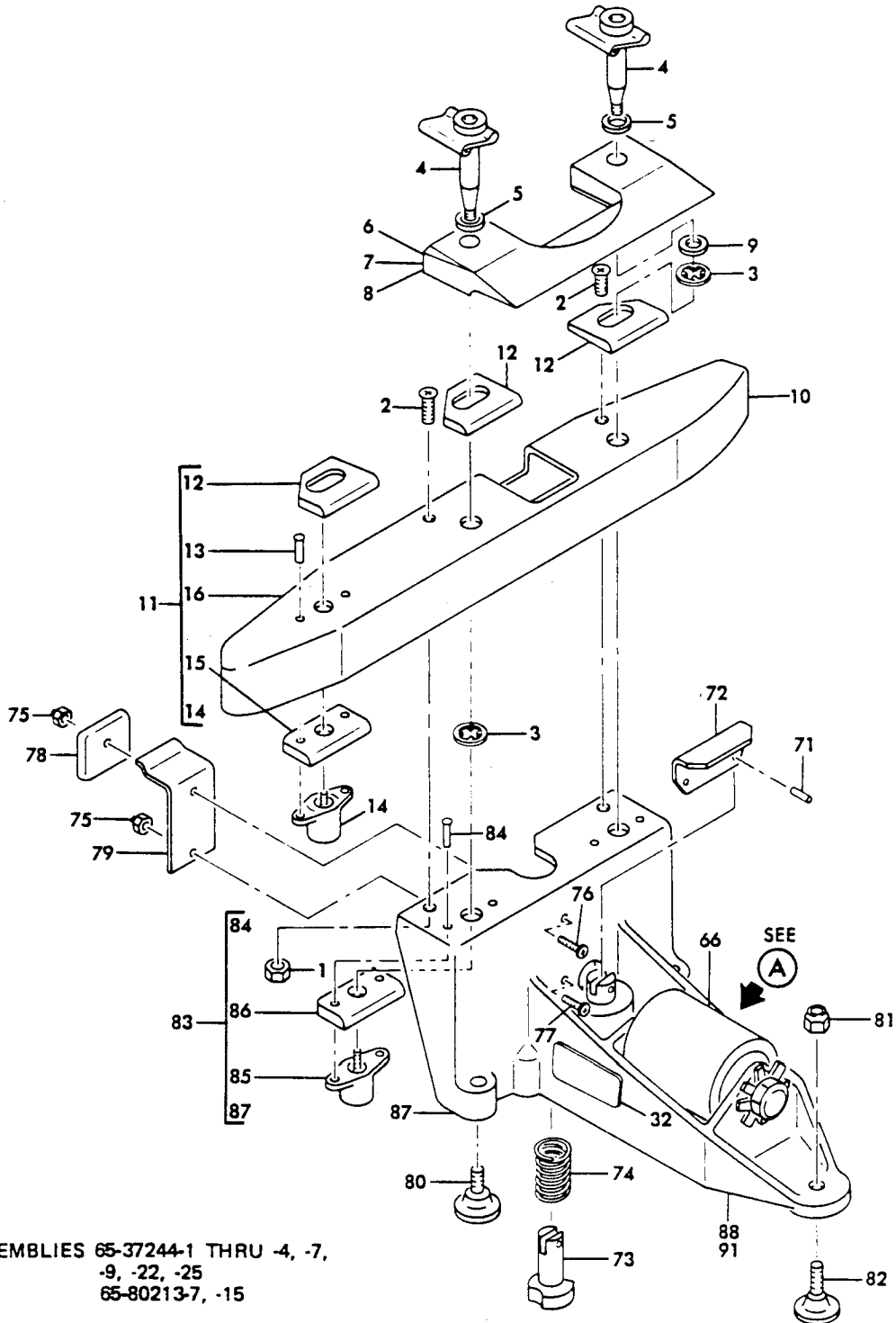


		Design Dimensions				Service Wear Limits		
Ref Letter Fig.3A	Mating Item No. Fig.4	Dimensions (inches)		Assembly Clearance (inch)		Dimension Limits (inches)		Maximum Allowable Clearance (inch)
		Min	Max	Min	Max	Min	Max	
A	ID 58,87, 88,89, 90,91	0.2500	0.2540				0.2599	0.0118
	CD 40,62	0.2481	0.2487	0.0013	0.0059	0.2422		

65-37244
65-80213
DASH NUMBERS LIMITED

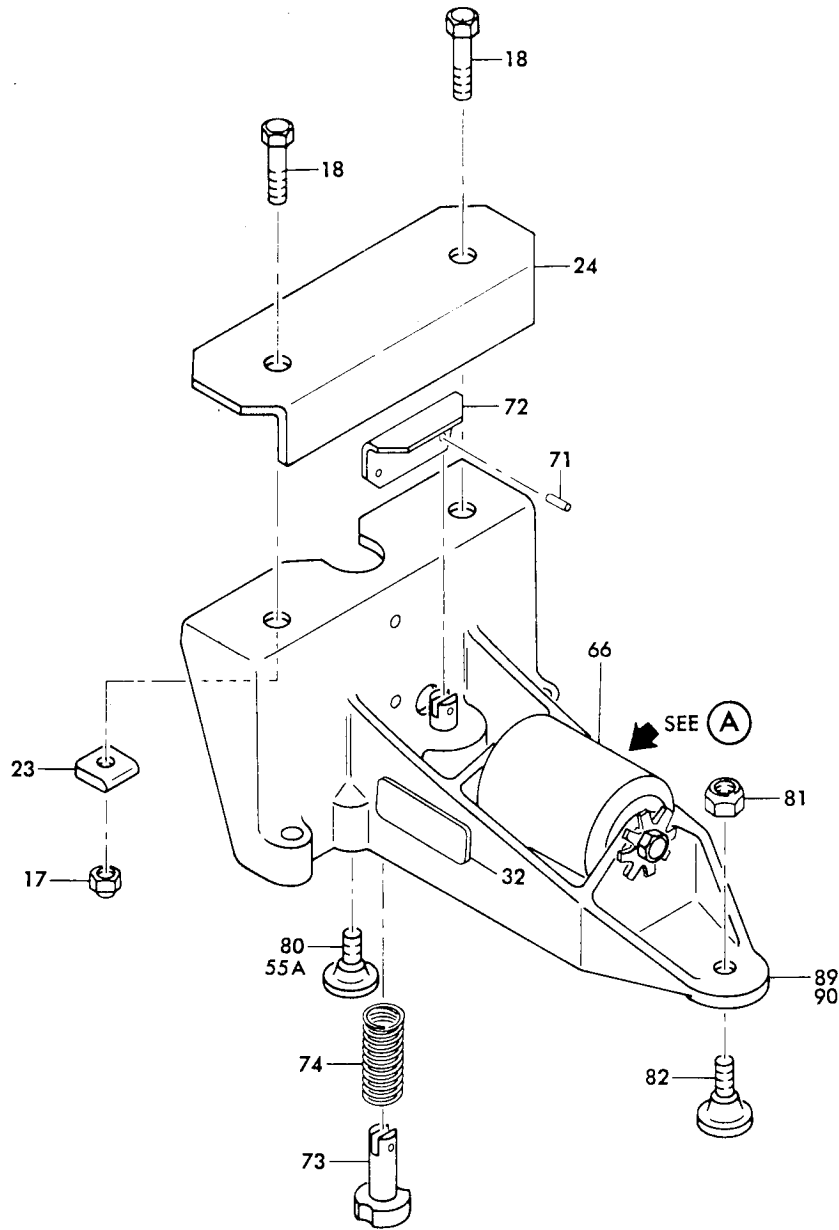
BOEING 
COMMERCIAL JET
OVERHAUL MANUAL

8. ILLUSTRATED PARTS LIST



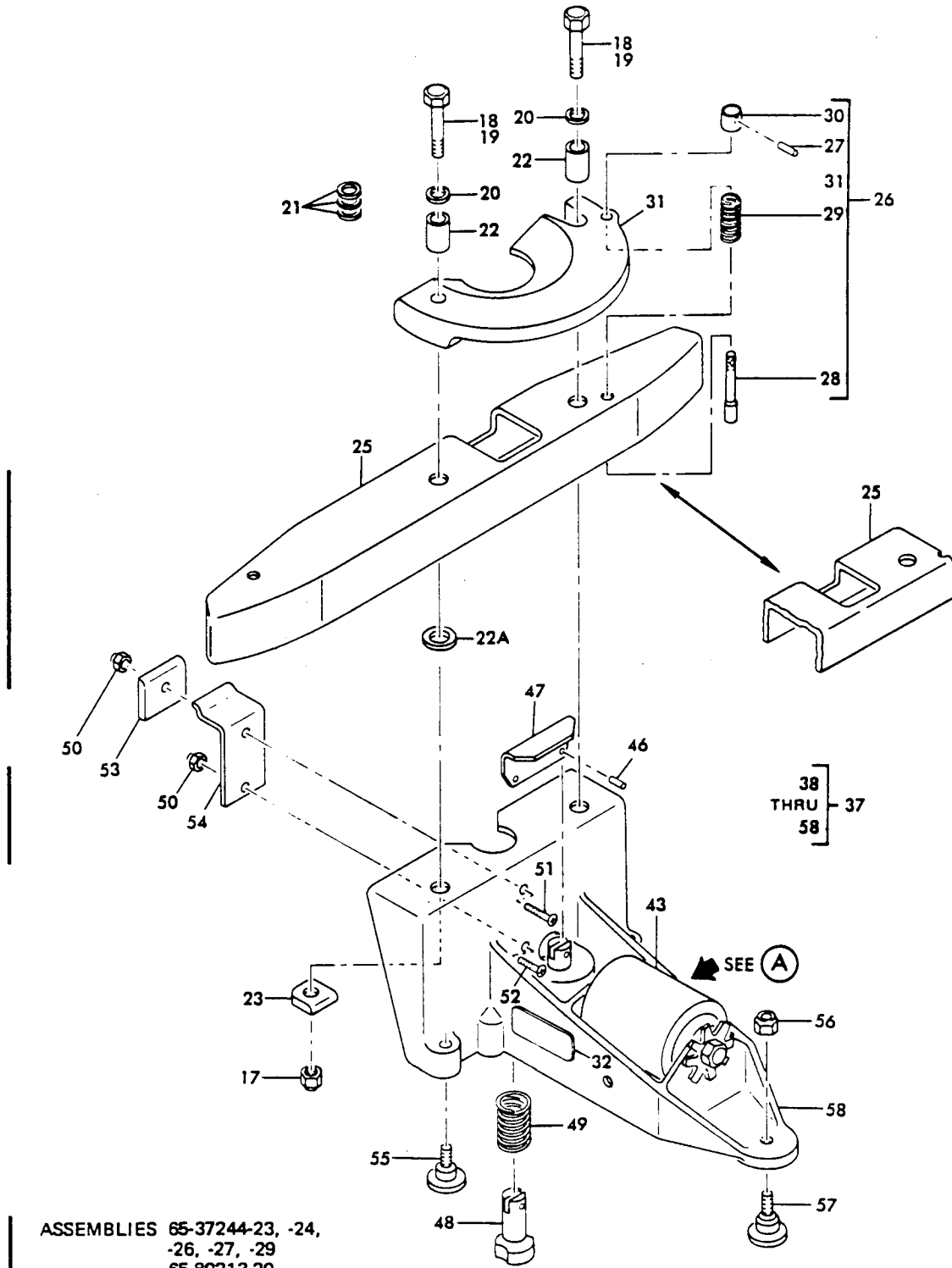
Jul 5/74

Palletized Cargo System Side Restraint Guide Assembly
Figure 4 (Sheet 1)



ASSEMBLIES 65-37244-11, -12

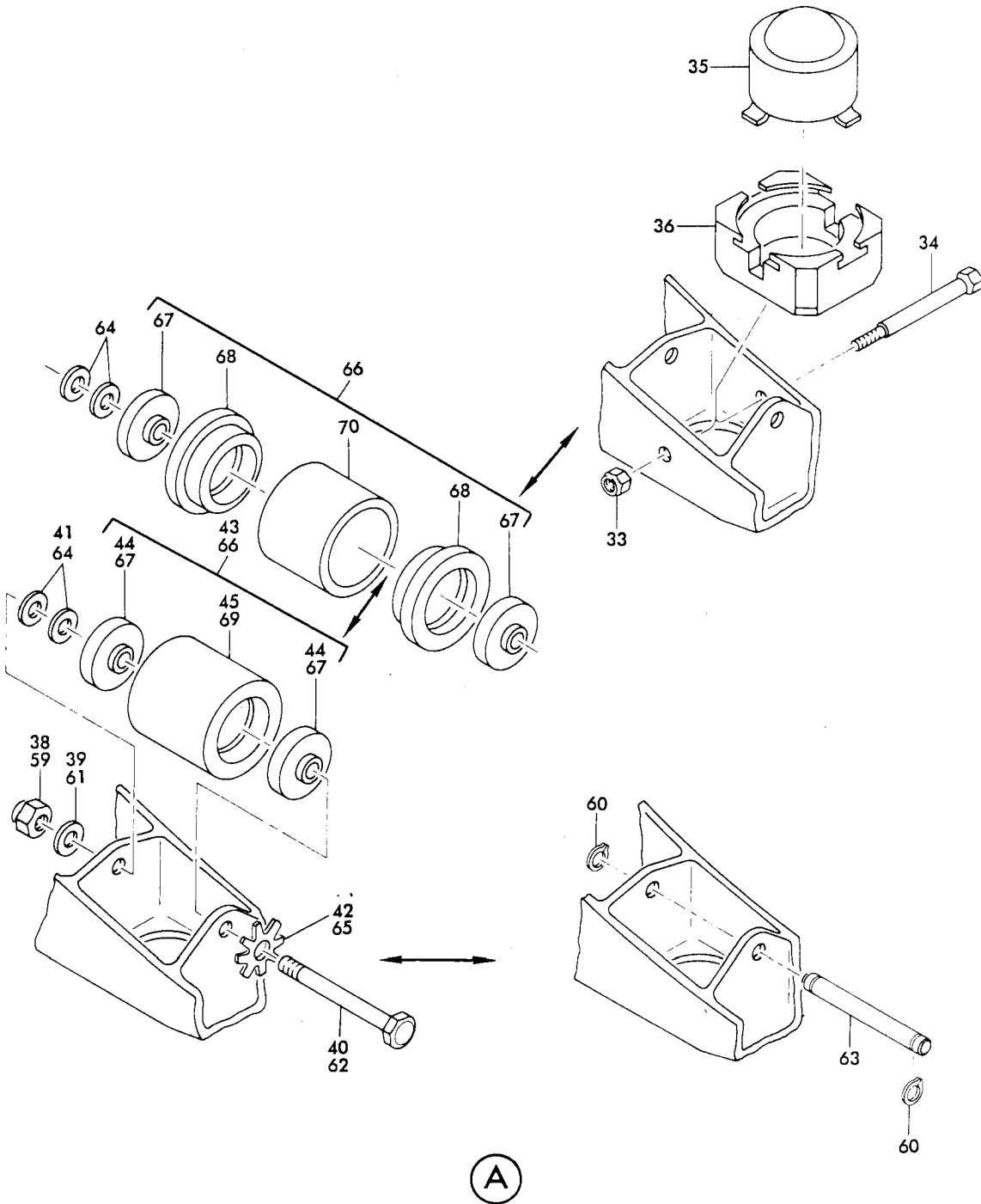
Palletized Cargo System Side Restraint Guide Assembly
Figure 4 (Sheet 2)



ASSEMBLIES 65-37244-23, -24,
 -26, -27, -29
 65-80213-20

Palletized Cargo System Side Restraint Guide Assembly
 Figure 4 (Sheet 3)

Jul 5/74



Palletized Cargo System Side Restraint Guide Assembly
 Figure 4 (Sheet 4)

65-37244
65-80213
DASH NUMBERS LIMITED

BOEING 
COMMERCIAL JET
OVERHAUL MANUAL

FIG. & ITEM NO.	PART NO.	AIRLINE PART NUMBER	N O M E N C L A T U R E							USE CODE	QTY PEP ASSY
			1	2	3	4	5	6	7		
4-	65-37244-1		SIDE RESTRAINT GUIDE ASSY, PALLETIZED CARGO SYS (SB'S 2136, 2137)							A	RF
	65-37244-2		SIDE RESTRAINT GUIDE ASSY, PALLETIZED CARGO SYS (SB'S 2078, 2093, 2133, 2134, 2136)							B	RF
	65-37244-3		SIDE RESTRAINT GUIDE ASSY, PALLETIZED CARGO SYS (SB'S 2078, 2093, 2280)							C	RF
	65-37244-4		SIDE RESTRAINT GUIDE ASSY, PALLETIZED CARGO SYS (SB'S 2133, 2134, 2135)							D	RF
	65-37244-7		SIDE RESTRAINT GUIDE ASSY, PALLETIZED CARGO SYS (SB'S 2032, 2133)							E	RF
	65-37244-9		SIDE RESTRAINT GUIDE ASSY, PALLETIZED CARGO SYS (SB'S 2093, 2137)							F	RF
	65-37244-11		SIDE RESTRAINT GUIDE ASSY, PALLETIZED CARGO SYS							G	RF
	65-37244-12		SIDE RESTRAINT GUIDE ASSY, PALLETIZED CARGO SYS							H	RF
	65-37244-21 *[1]		DELETED SIDE RESTRAINT GUIDE ASSY, PALLETIZED CARGO SYS (REWORKED FROM 65-37244-2 BY SB 2247)							J	RF
	65-37244-22 *[1]		SIDE RESTRAINT GUIDE ASSY, PALLETIZED CARGO SYS SIDE RESTRAINT GUIDE ASSY, PALLETIZED CARGO SYS (REWORKED FROM 65-37244-3 BY SB 2247)							K	RF
	65-37244-23		SIDE RESTRAINT GUIDE ASSY, PALLETIZED CARGO SYS							L	RF
	65-37244-23		SIDE RESTRAINT GUIDE ASSY, PALLETIZED CARGO SYS (REWORKED FROM 65-37244-1 BY SB 2247)							M	RF
	65-37244-23		SIDE RESTRAINT GUIDE ASSY, PALLETIZED CARGO SYS (REWORKED FROM 65-37244-7 BY SB 2247)							N	RF
	65-37244-23		SIDE RESTRAINT GUIDE ASSY, PALLETIZED CARGO SYS (REWORKED FROM 65-37244-9 BY SB 2247)							O	RF
	65-37244-23		SIDE RESTRAINT GUIDE ASSY, PALLETIZED CARGO SYS (REWORKED FROM 65-37244-9 BY SB 2247)							P	RF
	65-37244-24		SIDE RESTRAINT GUIDE ASSY, PALLETIZED CARGO SYS							Q	RF
	65-37244-25		SIDE RESTRAINT GUIDE ASSY, PALLETIZED CARGO SYS							R	RF

BOEING 
COMMERCIAL JET
OVERHAUL MANUAL

65-37244
65-80213
DASH NUMBERS LIMITED

FIG. & ITEM NO.	PART NO.	AIRLINE PART NUMBER	N O M E N C L A T U R E							USE CODE	QTY PER ASSY
			1	2	3	4	5	6	7		
4-	65-37244-26		SIDE RESTRAINT GUIDE ASSY, PALLETIZED CARGO SYS							S	RF
	65-37244-27		SIDE RESTRAINT GUIDE ASSY, PALLETIZED CARGO SYS							T	RF
	65-80213-7		SIDE RESTRAINT GUIDE ASSY, PALLETIZED CARGO SYS (SB 2967)							U	RF
	65-80213-15		SIDE RESTRAINT GUIDE ASSY, PALLETIZED CARGO SYS (SB 2967)							V	RF
	65-80213-20		SIDE RESTRAINT GUIDE ASSY, PALLETIZED CARGO SYS (SB'S 2967, 3006)							W	RF
	65-37244-29		SIDE RESTRAINT GUIDE ASSY, PALLETIZED CARGO SYS							X	RF
1	BACN10JC3		. NUT (REPLS NAS679A3W)(SB 2967)							ADEFU V	2
2	NAS514P1032-7		. SCREW (SB 2967)							ADEFU V	2
3	BACF34D5R		. RING, RETAINER							AE	4
3	CA1625-2		. RING ASSY, RETAINER, V29372							F	2
4	191004-5-15		. BOLT, PANHEAD SLEEVE, V80539							AEF	2
5	AN960C516L		. WASHER							E	2
6	65-37252-1		. LIP							A	1
7	65-37252-4		. LIP (SB 2032)							E	1
8	66-21279-1		. LIP (SB 2137)							F	1
9	AN960PD516L		. WASHER							E	1
10	69-29635-1		. GUIDE (SB's 2247, 2967)							DFNOP UV	1
11	65-37244-6		. GUIDE ASSY							A	1
11	65-37244-8		. GUIDE ASSY							E	1
12	66-21277-1		. . SPACER, TAPERED (BONDED TO 69-29635-1)							E	3
13	MS20426D3		. . RIVET								2
14	BACF34D5R7-3		. . RECEPTACLE ASSY								1
15	66-20979-1		. . SPACER								1
16	69-29635-1		. . GUIDE								1
17	BACN10JC5		. NUT (REPLS NAS679A5)							R	1
17	BACN10JC5		. NUT (REPLS NAS679A5)(SB'S 2247, 2967, 3006)							GHM-Q S-X	2
18	BACB30NF5-5		. BOLT (REPLS NAS1105-5)							GH	2
18	BACB30NF5-7		. BOLT (REPLS NAS1105-7)							QS	2
18	BACB30NF5-7		. BOLT (REPLS NAS1105-7)							R	1
19	BACB30NF5-16		. BOLT (REPLS NAS1105-16)(SB'S 2247, 2967, 3006)							M-PT- X	2

65-37244
65-80213
DASH NUMBERS LIMITED

BOEING 
COMMERCIAL JET
OVERHAUL MANUAL

FIG. & ITEM NO.	PART NO.	AIRLINE PART NUMBER	N O M E N C L A T U R E							USE CODE	QTY PER ASSY
			1	2	3	4	5	6	7		
4-											
20	BACW10P115S		.	W	A	S	H	E	R	M-PT-X	2
20	AN96OPD516		.	W	A	S	H	E	R	R	1
20	AN96OPD516L		.	W	A	S	H	E	R	QS	2
21	AN96OPD716L		.	W	A	S	H	E	R	M-PT-X	AR
22	NAS43HT5-37		.	S	P	A	C	E	R	M-PT-X	2
22	NAS75-5-005		.	B	U	S	H	I	N	R	1
22A	65-80213-12		.	W	A	S	H	E	R	UV	1
23	66-23325-1		.	F	I	L	L	E	R	GHM-Q	2
23	66-23325-1		.	F	I	L	L	E	R	S-X	
23	66-23325-1		.	F	I	L	L	E	R	R	1
24	66-23324-1		.	R	A	I	L			GH	1
25	69-36343-1		.	R	A	I	L			MGSTU	1
25	69-36343-4		.	R	A	I	L			X	1
26	69-36364-1		.	L	I	P	A	S	S	M-PT-X	1
27	MS16562-3		.	.	P	I	N				1
28	66-21714-1		.	.	P	I	N				1
29	MS24585C89		.	.	S	P	R	I	N		1
30	66-21266-1		.	.	K	N	O	B			1
31	65-43624-1		.	.	L	I	P				1
32	BACMLON2ECY		.	M	A	R	K	E	R	A	1
32	BACMLON2ECZ		.	M	A	R	K	E	R	B	1
32	BACMLON2EDA		.	M	A	R	K	E	R	C	1
32	BACMLON2EDB		.	M	A	R	K	E	R	DUV	1
32	BACMLON2EFU		.	M	A	R	K	E	R	E	1
32	BACMLON2EHX		.	M	A	R	K	E	R	F	1
32	BACMLON2EKY		.	M	A	R	K	E	R	G	1
32	BACMLON2EKZ		.	M	A	R	K	E	R	H	1
32	BACMLON2ELH		.	M	A	R	K	E	R	M-P	1
32	BACMLON2ELJ		.	M	A	R	K	E	R	QU	1
32	BAC27DCA13		.	M	A	R	K	E	R	R	1
32	BAC27CCH54		.	M	A	R	K	E	R	S	1
32	BAC27CCH55		.	M	A	R	K	E	R	T	1
33	BACN1QJC3		.	N	U	T				CKL	1
34	BACB3ONE3-32		.	B	O	L	T			CKL	1
35	69-29683-3		.	B	A	L	A	S	S	CKL	1

BOEING 
COMMERCIAL JET
OVERHAUL MANUAL

65-37244
65-80213
DASH NUMBERS LIMITED

FIG. & ITEM NO.	PART NO.	AIRLINE PART NUMBER	N O M E N C L A T U R E							USE CODE	QTY PER ASSY
			1	2	3	4	5	6	7		
4-											
35	69-29683-2									CKL	1
35	69-29683-1									CKL	1
36	66-20978-1									CKL	1
37	65-37244-21									M-QW	1
37	65-37244-28									STX	1
38	BACN10JC4										1
39	AN960-416L										1
40	BACB30NF4-36										1
41	AN960D416L										AR
42	MS27111-2										1
43	69-33944-1										1
44	BACB10A689										2
45	69-33944-2										1
46	MS16562-31										2
47	66-20789-1										1
48	66-20790-1									M-QW	2
48	69-61476-1									STX	2
49	MS24585C331										2
50	BACN10JC04										2
51	NAS514P440-8										1
52	NAS600-6P										1
53	66-20791-1										1
54	66-20799-1										1
55	69-29644-2									M-QW	4
55	69-29644-2									STX	2
55A	69-61472-1									STX	2
56	BACN10JC5										1
57	69-29645-1										1
58	65-37206-5									M-QW	1
58	65-79156-1									STX	1
58	65-79302-1									STX	1
59	BACN10JC4									BD-HJ OPUV	1

BOEING 
COMMERCIAL JET
OVERHAUL MANUAL

FIG. & ITEM NO.	PART NO.	AIRLINE PART NUMBER	N O M E N C L A T U R E							USE CODE	QTY PER ASSY
			1	2	3	4	5	6	7		
4-60	NAS670-25		. RING, SNAP (OPT WITH ITEM 63 TO ITEM 59 AND ITEM 62)(SB'S 2247, 2967)							ABDEJ NOUV	2
61	AN960-416L		. WASHER (USED WITH NAS1104-36)(SB'S 2133, 2134, 2135, 2136, 2137, 2247, 2967)							BD-HJ OPUV	1
62	BACB3ONF4-36		. BOLT (REPLS NAS1104-36) *[2] (SB'S 2133, 2134, 2135, 2136, 2137, 2247, 2967)							BD-HJ OPUV	1
63	69-29609-1		. SHAFT (OPT WITH ITEM 60 TO ITEM 62 WITH ITEM 59)(SB'S 2247, 2967)							ABDEJ NOUV	1
64	AN960D416L		. WASHER (SB'S 2247, 2967)							ABD-H JOPUV	AR
65	MS27111-2		. WASHER, KEY (USED WITH ITEM 62 AND ITEM 59)(SB'S 2133, 2134, 2135, 2136, 2137, 2247, 2967)							BD-HJ OPUV	1
66	69-33944-1		. ROLLER ASSY (PREF)(SB'S 2247, 2967)							ABD-H JNOPU V	1
66	69-29612-1		. ROLLER ASSY (OPT) (SB'S 2247, 2967)							ABDEJ NOUV	1
67	BACB10A689		. . BEARING (REPLS AN200KP4)								2
68	69-29603-1		. . RETAINER (USED ON 69-29612-1)								2
69	69-33944-2		. . ROLLER (USED ON 69-33944-1)								1
70	69-29606-1		. . ROLLER (USED ON 69-29612-1)								1
71	MS16562-31		. PIN, SPRING (SB'S 2247, 2967)							A-HJ- LNOPR UV	2
72	66-20789-1		. LIFTER (SB'S 2247, 2967)							A-HJ- LNOPR UV	1
73	66-20790-1		. PLUNGER (SB'S 2247, 2967)							A-HJ- LNOPR UV	2
74	MS24585C331		. SPRING (SB'S 2247, 2967)							A-HJ- LNOPR UV	2
75	BACN10JCO4		. NUT (REPLS NAS679A04W)(SB'S 2247, 2967)							A-FJK LNOPU V	2

BOEING
COMMERCIAL JET
OVERHAUL MANUAL

65-37244
65-80213
DASH NUMBERS LIMITED

FIG. & ITEM NO.	PART NO.	AIRLINE PART NUMBER	N O M E N C L A T U R E							USE CODE	QTY PER ASSY
			1	2	3	4	5	6	7		
4-76	NAS514P440-8		.	S	C	R	E	W		A-FJK LNOPU V	1
77	NAS600-6P		.	S	C	R	E	W		A-FJK LNOPU V	1
78	66-20791-1		.	F	I	L	L	E	R	A-FJK LNOPU V	1
79	66-20799-1		.	S	P	R	I	N	G	A-FJK LNOPU V	1
80	69-29644-2		.	S	T	U	D			A-FJK LNOPR UV	4
80	69-29644-2		.	S	T	U	D			GH	3
81	BACN10JC5		.	N	U	T				A-HJK LNOPR UV	1
82	69-29645-1		.	S	T	U	D			A-HJK LNOPR UV	1
83	65-37244-5		.	R	E	S	T	R	A	ABCEF	1
84	MS20426D3		.	.	R	I	V	E	T		4
85	BACF34D5R7-3		.	.	R	E	C	E	P		2
86	66-20786-1		.	.	F	I	L	L	E		2
87	65-37206-1		.	.	H	O	U	S	I		1
88	65-37206-1		.	H	O	U	S	I	N	DJLNO PUV	1
89	65-37206-3		.	H	O	U	S	I	N	G	1
90	65-37206-4		.	H	O	U	S	I	N	H	1
91	65-37206-5		.	H	O	U	S	I	N	KR	1

*[1] NO BOEING ASSIGNED PART NUMBER

*[2] ITEM 62 AND RELATED PARTS PREFERRED TO 69-29609-1 AND NAS670-25

VENDORS

V29372 TRIDAIR INDUSTRIES, FASTENER DIVISION, 3000 WEST LOMITA BOULEVARD, TORRANCE, CALIFORNIA 90505

V80539 STANDARD PRESSED STEEL COMPANY, 2701 SOUTH HARBOR BOULEVARD, SANTA ANA, CALIFORNIA 92702

65-37244
 65-80213
 DASH NUMBERS LIMITED

BOEING 
COMMERCIAL JET
OVERHAUL MANUAL

Part No.	Fig. and Index No.	Qty. per Assy.
AN200KP4	4-	AR
AN3-23A		AR
AN960-416L		AR
AN960C516L		AR
AN960D416L		AR
AN960PD516		AR
AN960PD516L		AR
AN960PD716L		AR
BACB10A689	44	2
BACB10A689	67	2
BACB3ONE3-32	34	1
BACB3ONF4-36	40	1
BACB3ONF4-36	62	1
BACB3ONF5-16	19	2
BACB3ONF5-5	18	2
BACB3ONF5-7	18	1
BACB3ONF5-7	18	2
BACF34D5R	3	4
BACF34D5R7-3	14	1
BACF34D5R7-3	85	2
BACM1ON2ECY	32	1
BACM1ON2ECZ	32	1
BACM1ON2EDA	32	1
BACM1ON2EDB	32	1
BACM1ON2EFU	32	1
BACM1ON2EHX	32	1
BACM1ON2EKY	32	1
BACM1ON2EKZ	32	1
BACM1ON2ELH	32	1
BACM1ON2ELJ	32	1
BACN1OJCO4	50	2
BACN1OJCO4	75	2
BACN1OJC3	1	2
BACN1OJC3	33	1
BACN1OJC4	38	1
BACN1OJC4	59	1
BACN1OJC5	17	1
BACN1OJC5	17	2
BACN1OJC5	56	1

Part No.	Fig. and Index No.	Qty. per Assy.
BACN1OJC5	81	1
BACW10P115S	20	2
BAC27CCH54	32	1
BAC27CCH55	32	1
BAC27DCA13	32	1
CA1625-2	3	2
MS16562-3		AR
MS16562-31		AR
MS20426D3		AR
MS24585C331		AR
MS24585C89		AR
MS27111-2		AR
NAS1104-36		AR
NAS1105-16		AR
NAS1105-5		AR
NAS1105-7		AR
NAS43HT5-37		AR
NAS514P1032-7		AR
NAS514P440-8		AR
NAS600-6		AR
NAS600-6P		AR
NAS670-25		AR
NAS679A04W		AR
NAS679A3W		AR
NAS679A4W		AR
NAS679A5		AR
NAS75-5-005		AR
191004-5-15	4	2
65-37206-1	87	1
65-37206-1	88	1
65-37206-3	89	1
65-37206-4	90	1
65-37206-5	58	1
65-37206-5	91	1
65-37244-1		RF

BOEING
COMMERCIAL JET
OVERHAUL MANUAL

65-37244
65-80213
DASH NUMBERS LIMITED

Part No.	Fig. and Index No.	Qty. per Assy.
65-37244-11	4-	RF
65-37244-12		RF
65-37244-2		RF
65-37244-21		RF
65-37244-21	37	1
65-37244-22		RF
65-37244-23		RF
65-37244-24		RF
65-37244-25		RF
65-37244-26		RF
65-37244-27		RF
65-37244-28	37	1
65-37244-29		RF
65-37244-3		RF
65-37244-4		RF
65-37244-5	83	1
65-37244-6	11	1
65-37244-7		RF
65-37244-8	11	1
65-37244-9		RF
65-37252-1	6	1
65-37252-4	7	1
65-43624-1	31	1
65-79156-1	58	1
65-79302-1	58	1
65-80213-12	22A	1
65-80213-15		RF
65-80213-20		RF
65-80213-7		RF
66-20786-1	86	2
66-20789-1	47	1
66-20789-1	72	1
66-20790-1	48	2
66-20790-1	73	2
66-20791-1	53	1
66-20791-1	78	1
66-20799-1	54	1
66-20799-1	79	1
66-20978-1	36	1
66-20979-1	15	1
66-21266-1	30	1
66-21277-1	12	3

Part No.	Fig. and Index No.	Qty. per Assy.
66-21279-1	8	1
66-21714-1	28	1
66-23324-1	24	1
66-23325-1	23	1
66-23325-1	23	2
69-29603-1	68	2
69-29606-1	70	1
69-29609-1	63	1
69-29612-1	66	1
69-29635-1	10	1
69-29635-1	16	1
69-29644-2	55	4
69-29644-2	55	2
69-29644-2	80	3
69-29644-2	80	4
69-29645-1	57	1
69-29645-1	82	1
69-29683-1	35	1
69-29683-2	35	1
69-29683-3	35	1
69-33944-1	43	1
69-33944-1	66	1
69-33944-2	45	1
69-33944-2	69	1
69-36343-1	25	1
69-36343-4	25	1
69-36364-1	26	1
69-61472-1	55A	2
69-61476-1	48	2