

OVERHAUL MANUAL

TO: ALL HOLDERS OF PALLETIZED CARGO SYSTEM SIDE RESTRAINT GUIDE RAIL  
 ASSEMBLY OVERHAUL MANUAL, 25-56-27

REVISION NO. 1, DATED NOV 10/85

HIGHLIGHTS

DESCRIPTION OF CHANGE	TOPICS AFFECTED												
	D & O	D / A s s y	C l e a n i n g	I n s p / C h k	R e p a i r	A s s y	F / C	T e s t	T / S h o o t t i n g	S / T o o l s	S t o r e a g e	I P L	L / O v e r h a u l
Added 65-47301-5 side restraint guide rail assembly per PRR 32721 which incorporates new bumper block	X	X		X	X	X						X	

**PALLETIZED CARGO SYSTEM SIDE RESTRAINT  
GUIDE RAIL ASSEMBLY**

**25-56-27**

BOEING P/N 65-47300-1 thru -10  
65-47301-1 thru -5  
65-80213-3, -5; -6, -13

AIRLINE P/N

THE FOLLOWING DIRECTIVES APPLY TO THIS SUBJECT:

BOEING SERVICE BULLETIN	BOEING TEMPORARY REVISION	OTHER DIRECTIVES	DATE DIRECTIVE INCORPORATED INTO TEXT
		PRR 15460	Jan 1/69
		PRR 15460-7	Jan 1/69
		PRR 15460-16	Jan 1/69
		PRR 15840	Jan 1/69
2247 (707)		PRR 15845	Jun 10/72
2280 (707)		PRR 16290-1	Jun 10/72
2967 (707)		MC 1781-3R	Jun 10/72
3006 (707)		MC 1781-6R	Jun 10/72
3039 (707)		MC 1781-R	Jun 10/72
		PRR 32721	Nov 10/85

OVERHAUL MANUAL

LIST OF EFFECTIVE PAGES					
* Indicates pages revised, added or deleted in latest revision					
F Indicates foldout pages - print one side only					
PAGE	DATE	PAGE	DATE	PAGE	DATE
25-56-27					
* T-1	Nov 10/85				
T-2	BLANK				
* LEP-1	Nov 10/85				
LEP-2	BLANK				
T/C-1	Jun 10/72				
T/C-2	BLANK				
* 1	Nov 10/85				
* 2	Nov 10/85				
3	Jun 10/72				
* 4	Nov 10/85				
* 5	Nov 10/85				
6	Jun 10/72				
7	Jun 10/72				
* 8	Nov 10/85				
9	Jun 10/72				
10	Jun 10/72				
* 11	Nov 10/85				
* 12	Nov 10/85				
* 13	Nov 10/85				
* 14	Nov 10/85				
* 15	Nov 10/85				
16	BLANK				

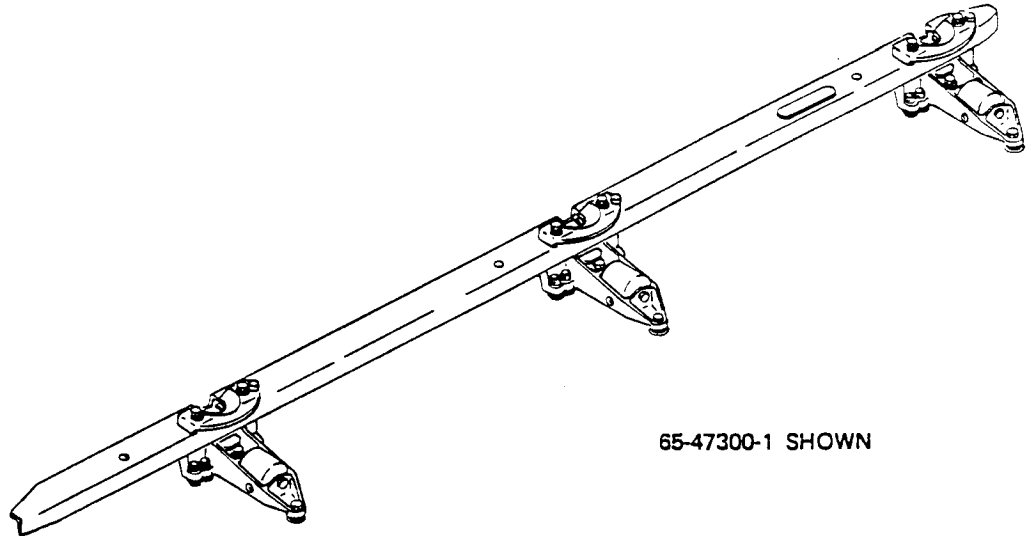
**BOEING**   
**COMMERCIAL JET**  
**OVERHAUL MANUAL**

TABLE OF CONTENTS

<u>Paragraph Title</u>	<u>Page</u>
Description and Operation . . . . .	1
Disassembly . . . . .	2
Cleaning. . . . .	3
Inspection/Check. . . . .	3
Repair. . . . .	3
Assembly. . . . .	4
Fits and Clearances . . . . .	None
Testing . . . . .	5
Trouble Shooting. . . . .	5
Storage Instructions. . . . .	5
Special Tools, Fixtures, and Equipment. . . . .	None
Illustrated Parts List. . . . .	6

OVERHAUL MANUAL

PALLETIZED CARGO SYSTEM SIDE RESTRAINT GUIDE RAIL ASSEMBLY



Palletized Cargo System Side Restraint Guide Rail Assembly  
Figure 1

1. DESCRIPTION AND OPERATION

A. Description

- (1) The palletized cargo system side restraint guide rail assembly consists of an inverted channel beam to which is secured guide assemblies and vertical restraint (lip) assemblies. Each guide assembly contains a roller or ball bearing on which the cargo pallet rests.

B. Operation

- (2) The palletized cargo system side restraint guide rail assembly provides side guidance and vertical and horizontal restraint for cargo pallets. The vertical restraint assembly has a lip which protrudes over the edge of the cargo pallet and restricts upward movement of the pallet. The lip can be retracted by pulling a spring loaded plunger pin and rotating the assembly 180 degrees horizontally around a pivot bolt.

OVERHAUL MANUAL

C. Leading Particulars

(1) Dimensions and Weights (Fig. 2)

Part Number	Approximate Length (inches)	Approximate Width (inches)	Approximate Height (inches)	Approximate Weight (pounds)
65-47300-1	51.25	7.25	4.25	9.8
65-47300-2	51.25	7.25	4.25	9.7
65-47300-3	68.25	7.25	4.25	12.8
65-47300-4	51.25	7.25	4.25	9.1
65-47300-5	51.25	7.25	4.25	9.0
65-47300-6	68.25	7.25	4.25	12.2
65-47300-7	51.25	7.25	4.25	10.0
65-47300-8	51.25	7.25	4.25	10.0
65-47300-9	51.25	7.25	4.25	9.4
65-47300-10	51.25	7.25	4.25	9.3
65-47301-1	50.78	7.25	4.25	13.6
65-47301-2	60.37	7.25	4.25	15.7
65-47301-3	50.78	7.25	4.25	12.9
65-47301-4	60.37	7.25	4.25	15.0
65-47301-5	60.37	7.25	4.25	12.9
65-80213-3	51.25	7.25	4.25	9.0
65-80213-5	60.37	7.25	4.25	15.0
65-80213-6	50.78	7.25	4.25	13.6
65-80213-13	51.25	7.25	4.25	9.0

Dimensions and Weight  
 Figure 2

2. DISASSEMBLY (Fig. 3)

- A. Remove bolts (1 and 2), nuts (3), washers (4, 5, 6 and 6A), and radius fillers (7), separating lip assembly (8), guide assemblies (15 or 16), and rail (17 or 18).

NOTE: Overhaul guide assemblies (15 and 16) per 25-56-22 and rail assemblies (18, P/N 65-43764) per 25-56-26.

- B. Remove nuts (19), washers (20), bolts (21), filler bars (22 and 23), and spacer (24) from guide rail (18).

NOTE: Do not remove aluminum foil marker (25) unless replacement is necessary.

- C. Remove nuts (3), washers (4), bolts (2) and remove bumper block (26) from guide rail (18).

OVERHAUL MANUAL

C. Remove spacer (14) from lip assembly (8). Disassemble lip assemblies (8) as follows:

- (1) Apply pressure to bottom of pin (10) and remove spring pin (9) and knob (12).

NOTE: Spring (11) force is approximately 3 pounds.

- (2) Gradually release spring (11) force and remove pin (10) and spring (11).

3. CLEANING

A. General (See figure 3.)

- (1) Wash all metal parts with clean solvent, Specification P-D-660 or equivalent.
- (2) Remove stubborn accumulations of dirt or foreign matter using a stiff-bristle brush.

CAUTION: DO NOT SCRATCH, MAR OR TEAR ALUMINUM FOIL MARKER (25).

- (3) Dry parts with clean, lint-free cloth or clean, moisture-free air.
- (4) For further information, refer to 20-30-03, General Cleaning Procedures.

4. INSPECTION/CHECK

A. Visual Check

- (1) Examine all metal parts for pits, scratches, cracks, corrosion, and damage. Use a strong light and a minimum of 10-power magnification.
- (2) Examine all spacers, bolts, and bolt holes for excessive or eccentric wear.
- (3) Examine entire basic assembly for corrosion, damage, and general condition of paint and finish.

## OVERHAUL MANUAL

## B. Special Check (Fig. 3)

- (1) Perform penetrant examination per 20-20-02 on lip (13), guide rail (17 and 18), filler bar (22 and 23), and bumper (26).
- (2) Check spring (11) for approximate free length of 0.440 inch. Compress to 0.247-inch length. Load required should be within 2.88-3.52 pounds.

5. REPAIR

## A. Deleted

## B. Refinish (Fig. 3)

NOTE: Refer to 20-30-02 for stripping of protective finishes, and to 20-41-01 for explanation of F and SRF finish codes.

## (1) Deleted

- (a) Radius filler (7), guide rail (17 and 18) and filler bar (22 and 23) -- Chromic acid anodize (F-2.20) all over.  
Material: Al Alloy.
- (b) Lip (13) -- Sulfuric acid anodize (F-2.201) (dyed red) all over. Material: Al alloy.
- (c) Knob (12) -- Cadmium plate (F-1.191) all over. Material: Steel AMS 4130.
- (d) Pin (10) -- Apply dry lubricant BMS 3-8, class A, to larger diameter surface. Material: CRES 17-4PH, 180-200 KSI.
- (e) Bumper (26) -- Apply one coat of BMS 10-11, type 2, red epoxy enamel (SRF-14.905-101). Color chip matching not required.

## C. Replacement (Fig. 3)

- (1) Replace all parts found unserviceable or damaged beyond simple repair.
- (2) Replace unserviceable aluminum foil marker (25) on guide rail (17 or 18) in accordance with 20-50-05.



OVERHAUL MANUAL

6. ASSEMBLY (Fig. 3)

- A. Assemble filler bars (22 and 23) to guide rail (18) with bolts (21), washers (20), and nuts (19).
- B. Install bumper block (26) on guide rail (18) with bolts (2), washers (4) and nuts (3).
- C. Install spacer (24) on guide rail (18) with bolt (21), washer (20), and nut (19).
- D. Preassemble lip assembly (8) as follows:

- (1) Install spring (11) on pin (10) and position in hole in lip (13).

CAUTION: PIN (10) HAS DRY FILM LUBRICATED BEARING SURFACE WHICH MUST BE KEPT CLEAN AND PROTECTED FROM MECHANICAL DAMAGE DURING ASSEMBLY.

- (2) Position knob (12) on pin (10).

- (3) Apply pressure to bottom of pin (10) and install spring pin (9) in knob (12) through hole in pin (10).

NOTE: Spring (11) force is approximately 3 pounds.

- E. Install guide assemblies (15 or 16) and lip assembly (8) to guide rail (17 or 18) as follows:

- (1) Position lip assembly (8), if applicable, and guide assembly (15 or 16) to guide rail (17 or 18).
- (2) Install spacer (14) in lip assembly (8).
- (3) Install bolts (1 and 2), washers (4, 5, 6 and 6A), radius fillers (7), and nuts (3).

NOTE: Washers (6) are installed only on pivot side to limit clearance between lip assembly (8) and guide rail (17 and 18) to 0.000-0.015 inch. Lip assembly (8) must be free to rotate after tightening pivot bolt (2).

7. TESTING

- A. Check lip assembly (8) for locking feature in normal and retracted positions, and smooth rotation to retracted position.
- B. Check pin (10) for freedom to operate with positive spring action.

OVERHAUL MANUAL

8. TROUBLE SHOOTING (See figure 3.)

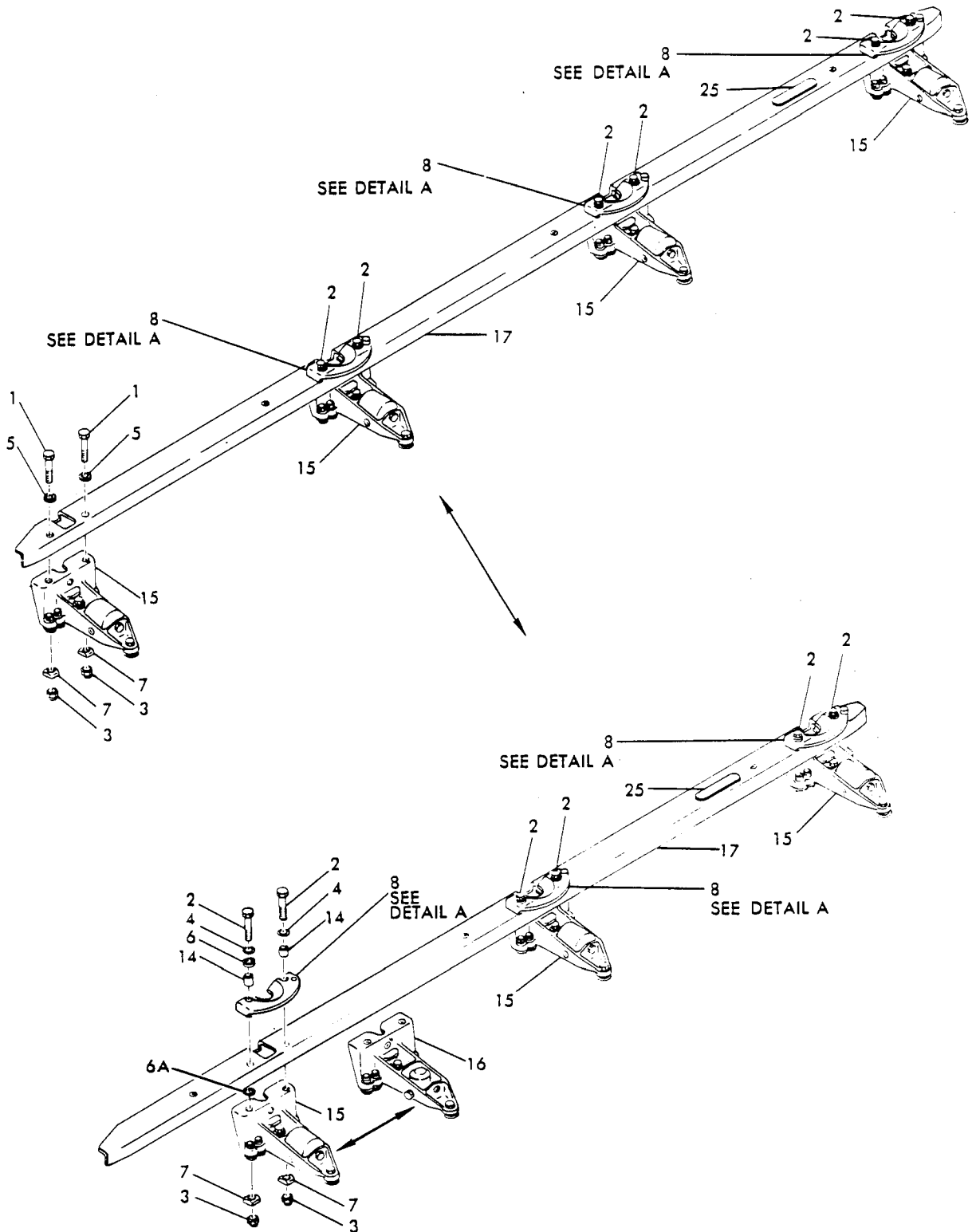
NOTE: Trouble shooting is keyed to individual steps of the test procedure. Referenced paragraphs show test procedure step in which the noted trouble would appear.

<u>Trouble</u>	<u>Possible Cause</u>	<u>Correction</u>
A. Lip assembly (8) binding on guide rail (17 or 18) paragraph 7.A.	Accumulation of foreign matter on rail or insufficient clearance between lip assembly and guide rail (17 or 18)	Clean or remove excess washers (6)
B. Pin (10) binding or loose, paragraph 7.B.	Accumulation of foreign matter, defective dry lubricant treatment, or spring broken	Clean or install serviceable pin or spring

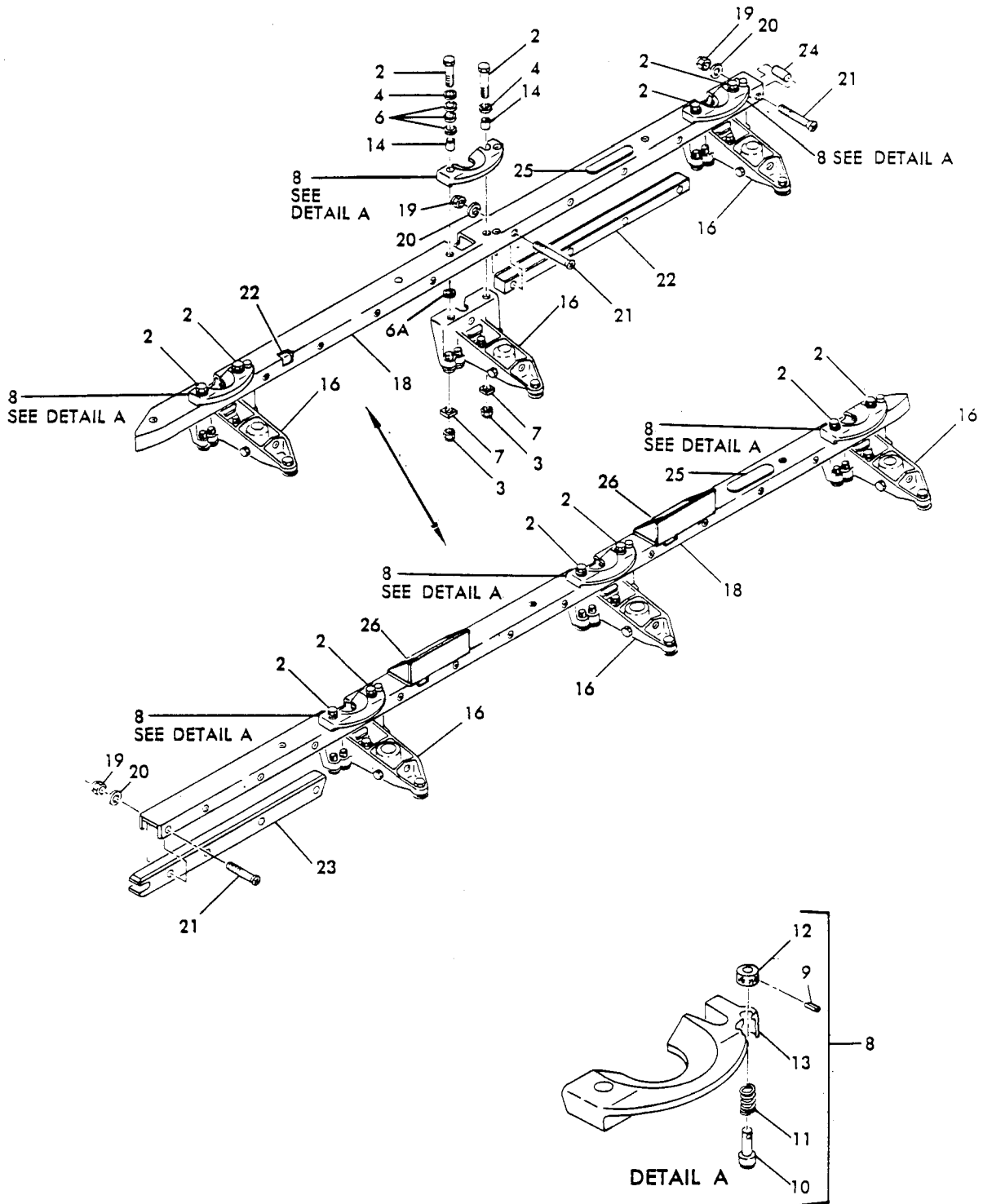
9. STORAGE INSTRUCTIONS

- A. Wrap assembly in vapor barrier paper and seal securely. Tag or mark assembly for identity.
- B. For further information, refer to 20-44-02, Temporary Protective Coatings.

10. ILLUSTRATED PARTS LIST



Palletized Cargo System  
Side Restraint Guide Rail Assembly  
Figure 3 (Sheet 1)



Palletized Cargo System  
Side Restraint Guide Rail Assembly  
Figure 3 (Sheet 2)

65-47300  
 65-47301 65-80213  
 DASH NUMBERS LIMITED  
 (SEE PAGE 1)



OVERHAUL MANUAL

FIG. & ITEM NO.	PART NO.	AIRLINE PART NUMBER	N O M E N C L A T U R E							USE CODE	QTY PER ASSY
			1	2	3	4	5	6	7		
3-	65-47300-1		PALLETIZED CARGO SYSTEM SIDE RESTRAINT GUIDE RAIL ASSY (SB's 2967, 3006)							A	Ref
	65-47300-1		PALLETIZED CARGO SYSTEM SIDE RESTRAINT GUIDE RAIL ASSY (reworked from 65-37256-7 and 65-37244-2 by SB 2247)							B	Ref
	65-47300-1		PALLETIZED CARGO SYSTEM SIDE RESTRAINT GUIDE RAIL ASSY (reworked from 65-37256-29 and 65-37244-2 by SB 2247)							C	Ref
	65-47300-1		PALLETIZED CARGO SYSTEM SIDE RESTRAINT GUIDE RAIL ASSY (reworked from 65-37257-1 and 65-37244-2 by SB 2247)							D	Ref
	65-47300-1		PALLETIZED CARGO SYSTEM SIDE RESTRAINT GUIDE RAIL ASSY (reworked from 65-37257-5 and 65-37244-2 by SB 2247)							E	Ref
	65-47300-1		PALLETIZED CARGO SYSTEM SIDE RESTRAINT GUIDE RAIL ASSY (reworked from 65-37257-7 and 65-37244-2 by SB 2247)							F	Ref
	65-47300-2		PALLETIZED CARGO SYSTEM SIDE RESTRAINT GUIDE RAIL ASSY (SB's 2967, 3006)							G	Ref
	65-47300-3		PALLETIZED CARGO SYSTEM SIDE RESTRAINT GUIDE RAIL ASSY							H	Ref
	65-47300-3		PALLETIZED CARGO SYSTEM SIDE RESTRAINT GUIDE RAIL ASSY (reworked from 65-37256-6 and 65-37244-2 by SB 2247)							I	Ref
	65-47300-3		PALLETIZED CARGO SYSTEM SIDE RESTRAINT GUIDE RAIL ASSY (reworked from 65-37256-28 and 65-37244-2 by SB 2247)							J	Ref
	65-47300-4		PALLETIZED CARGO SYSTEM SIDE RESTRAINT GUIDE RAIL ASSY							K	Ref
	65-47300-4		PALLETIZED CARGO SYSTEM SIDE RESTRAINT GUIDE RAIL ASSY (reworked from 65-37256-23 and 65-37244-2 by SB 2247)							L	Ref

FIG. & ITEM NO.	PART NO.	AIRLINE PART NUMBER	N O M E N C L A T U R E							USE CODE	QTY PER ASSY
			1	2	3	4	5	6	7		
3-	65-47300-4		PALLETIZED CARGO SYSTEM SIDE RESTRAINT GUIDE RAIL ASSY (reworked from 65-37257-2 and 65-37244-2 by SB 2247)							M	Ref
	65-47300-5		PALLETIZED CARGO SYSTEM SIDE RESTRAINT GUIDE RAIL ASSY (SB 3039)							N	Ref
	65-47300-6		PALLETIZED CARGO SYSTEM SIDE RESTRAINT GUIDE RAIL ASSY							O	Ref
	65-47300-6		PALLETIZED CARGO SYSTEM SIDE RESTRAINT GUIDE RAIL ASSY (reworked from 65-37256-22 and 65-37244-2 by SB 2247)							P	Ref
	65-47300-7		PALLETIZED CARGO SYSTEM SIDE RESTRAINT GUIDE RAIL ASSY (SB 2280)							Q	Ref
	65-47300-8		PALLETIZED CARGO SYSTEM SIDE RESTRAINT GUIDE RAIL ASSY (SB 2280)							R	Ref
	65-47300-9		PALLETIZED CARGO SYSTEM SIDE RESTRAINT GUIDE RAIL ASSY (SB 2280)							S	Ref
	65-47300-10		PALLETIZED CARGO SYSTEM SIDE RESTRAINT GUIDE RAIL ASSY (SB 2280)							T	Ref
	65-47301-1		PALLETIZED CARGO SYSTEM SIDE RESTRAINT GUIDE RAIL ASSY (SB's 2967, 3006)							U	Ref
	65-47301-1		PALLETIZED CARGO SYSTEM SIDE RESTRAINT GUIDE RAIL ASSY (reworked from 65-43764-1 and 65-37244-3 by SB 2247)							V	Ref
	*[1]		PALLETIZED CARGO SYSTEM SIDE RESTRAINT GUIDE RAIL ASSY (reworked from 65-37257-1 and 65-37244-3 by SB 2247)							W	Ref
	65-47301-2		PALLETIZED CARGO SYSTEM SIDE RESTRAINT GUIDE RAIL ASSY (SB's 2967, 3006)							X	Ref
	65-47301-2		PALLETIZED CARGO SYSTEM SIDE RESTRAINT GUIDE RAIL ASSY (reworked from 65-43764-2 and 65-37244-3 by SB 2247)							Y	Ref
	*[1]		PALLETIZED CARGO SYSTEM SIDE RESTRAINT GUIDE RAIL ASSY (reworked from 65-37257-5 and 65-37244-3 by SB 2247)							Z	Ref



OVERHAUL MANUAL

FIG. & ITEM NO.	PART NO.	AIRLINE PART NUMBER	N O M E N C L A T U R E							USE CODE	QTY PER ASSY
			1	2	3	4	5	6	7		
3-	65-47301-3		PALLETIZED CARGO SYSTEM SIDE RESTRAINT GUIDE RAIL ASSY							AA	RF
	65-47301-3		PALLETIZED CARGO SYSTEM SIDE RESTRAINT GUIDE RAIL ASSY (REWORKED FROM 65-43764-3 AND 65-37244-3 BY SB 2247)							BA	RF
	*[1]		PALLETIZED CARGO SYSTEM SIDE RESTRAINT GUIDE RAIL ASSY (REWORKED FROM 65-37257-2 AND 65-37244-3 BY SB 2247)							CA	RF
	65-47301-4		PALLETIZED CARGO SYSTEM SIDE RESTRAINT GUIDE RAIL ASSY							DA	RF
	65-47301-4		PALLETIZED CARGO SYSTEM SIDE RESTRAINT GUIDE RAIL ASSY (REWORKED FROM 65-43764-4 AND 65-37244-3 BY SB 2247)							EA	RF
	*[1]		PALLETIZED CARGO SYSTEM SIDE RESTRAINT GUIDE RAIL ASSY (REWORKED FROM 65-37257-2 AND 65-37244-3 BY SB 2247)							FA	RF
	65-47301-5		PALLETIZED CARGO SYSTEM SIDE RESTRAINT GUIDE RAIL ASSY							KA	RF
	65-80213-3		PALLETIZED CARGO SYSTEM SIDE RESTRAINT GUIDE RAIL ASSY (SB 2967)							GA	RF
	65-80213-5		PALLETIZED CARGO SYSTEM SIDE RESTRAINT GUIDE RAIL ASSY (SB 2967)							HA	RF
	65-80213-6		PALLETIZED CARGO SYSTEM SIDE RESTRAINT GUIDE RAIL ASSY (SB 2967)							IA	RF
	65-80213-13		PALLETIZED CARGO SYSTEM SIDE RESTRAINT GUIDE RAIL ASSY (SB 2967)							JA	RF
1	BACB30NF5-7		. BOLT (REPLS NAS1105-7)							HIJP	2
1	BACB30NF5-7		. BOLT (REPLS NAS1105-7)							KNST	6
1	BACB30NF5-7		. BOLT (REPLS NAS1105-7)							AA DA	8
2	BACB30NF5-16		. BOLT (REPLS NAS1105-16)							O	8
2	BACB30NF5-20		. BOLT							*[2]	6
3	BACN10JC5		. NUT (REPLS NAS679A5)							KA	6
										A-G	6
										K-N	
										Q-KA	
3	BACN10JC5		. NUT (REPLS NAS679A5)							HIJOP	8

OVERHAUL MANUAL

FIG. & ITEM NO.	PART NO.	AIRLINE PART NUMBER	N O M E N C L A T U R E						USE CODE	QTY PER ASSY	
			1	2	3	4	5	6			7
3-4	BACW10P115S		.	W	A	S	H	E	R	*[2] KA	6
5	AN960PD516L		.	W	A	S	H	E	R	HIJP	2
5	AN960PD516L		.	W	A	S	H	E	R	KNST AA DA O	6
5	AN960PD516L		.	W	A	S	H	E	R	O	8
6	AN960PD716L		.	W	A	S	H	E	R	*[2]	AR
6A	65-80213-12		.	W	A	S	H	E	R	GA-JA	3
7	66-23325-1		.	F	I	L	L	E	R	A-G K-N Q-KA	6
7	66-23325-1		.	F	I	L	L	E	R	HIJOP	8
8	69-36364-1		.	L	I	P	A	S	S	*[2] KA	3
9	MS16562-3		.	.	P	I	N	,	S		1
10	66-21714-1		.	.	P	I	N				1
11	MS24585C89		.	.	S	P	R	I	N		1
12	66-21266-1		.	.	K	N	O	B			1
13	65-43624-1		.	.	L	I	P				1
14	NAS43HT5-37		.	S	P	A	C	E	R	*[2] KA	6
15	65-372444-21		.	G	U	I	D	E	R	AGKN	3
15	65-37244-21		.	G	U	I	D	E	R	HO	4
15	65-37244-2		.	G	U	I	D	E	R	B-FLM	3
15	65-37244-2		.	G	U	I	D	E	R	IJP	4
16	65-37244-22		.	G	U	I	D	E	R	Q-UX AA DA KA	3
16	65-37244-3		.	G	U	I	D	E	R	VWYZ BA CA EA-IA	3
16	65-37244-2		.	G	U	I	D	E	R	JA	3
17	65-43623-1		.	R	A	I	L	,	G	AKQS	1
17	65-43623-2		.	R	A	I	L	,	G	GNRT	1
17	65-43623-3		.	R	A	I	L	,	G	HO	1
17	65-37256-6		.	R	A	I	L	,	G	I	1



OVERHAUL MANUAL

FIG. & ITEM NO.	PART NO.	AIRLINE PART NUMBER	N O M E N C L A T U R E							USE CODE	QTY PER ASSY																															
			1	2	3	4	5	6	7																																	
3-17	65-37256-7		.	R	A	I	L	,	G	U	I	D	E	(	R	E	F	2	5	-	5	6	-	2	3)	(	S	B		B		1										
17	65-37256-22		.	R	A	I	L	,	G	U	I	D	E	(	R	E	F	2	5	-	5	6	-	2	3)	(	S	B		P		1										
17	65-37256-23		.	R	A	I	L	,	G	U	I	D	E	(	R	E	F	2	5	-	5	6	-	2	3)	(	S	B		L		1										
17	65-37256-28		.	R	A	I	L	,	G	U	I	D	E	(	R	E	F	2	5	-	5	6	-	2	3)	(	S	B		J		1										
17	65-37256-29		.	R	A	I	L	,	G	U	I	D	E	(	R	E	F	2	5	-	5	6	-	2	3)	(	S	B		C		1										
17	65-37257-1		.	R	A	I	L	,	G	U	I	D	E	(	R	E	F	2	5	-	5	6	-	2	5)	(	S	B		DW		1										
17	65-37257-2		.	R	A	I	L	,	G	U	I	D	E	(	R	E	F	2	5	-	5	6	-	2	5)	(	S	B	'	S	2	2	4	7,	2	9	6	7)	M	CA		1
17	65-37257-5		.	R	A	I	L	,	G	U	I	D	E	(	R	E	F	2	5	-	5	6	-	2	5)	(	S	B		EZ		1										
17	65-37257-7		.	R	A	I	L	,	G	U	I	D	E	(	R	E	F	2	5	-	5	6	-	2	5)	(	S	B		F		1										
18	65-44395-3		.	R	A	I	L	,	G	U	I	D	E	(	S	B	'	S	2	9	6	7,	3	0	0	6)			X	DA		1										
18	65-44395-4		.	R	A	I	L	,	G	U	I	D	E	(	S	B	'	S	2	9	6	7,	3	0	0	6)			U	AA		1										
18	65-43764-1		.	R	A	I	L		A	S	S	(	R	E	F	2	5	-	5	6	-	2	6)	(	S	B		V		1												
18	65-43764-2		.	R	A	I	L		A	S	S	(	R	E	F	2	5	-	5	6	-	2	6)	(	S	B		Y		1												
18	65-43764-3		.	R	A	I	L		A	S	S	(	R	E	F	2	5	-	5	6	-	2	6)	(	S	B	'	S	2	2	4	7,	2	9	6	7)	BA	IA		1		
18	65-43764-4		.	R	A	I	L		A	S	S	(	R	E	F	2	5	-	5	6	-	2	6)	(	S	B	'	S	2	2	4	7,	2	9	6	7)	EA	HA		1		
19	BACN10JC3		.	N	U	T	(	R	E	P	L	S	N	A	S	6	7	9	A	3	W)	(	S	B	'	S	2	9	6	7,	3	0	0	6)	U	AA		9				
19	BACN10JC3		.	N	U	T	(	R	E	P	L	S	N	A	S	6	7	9	A	3	W)	(	S	B	'	S	1	9	6	7,	3	0	0	6)	X	DA		12				
20	AN960PD10L		.	W	A	S	H	E	R	(	S	B	'	S	2	9	6	7,	3	0	0	6)					U	AA		9												
20	AN960PD10L		.	W	A	S	H	E	R	(	S	B	'	S	2	9	6	7,	3	0	0	6)					X	DA		12												
21	NAS1503-25		.	B	O	L	T	(	S	B	'	S	2	9	6	7,	3	0	0	6)						U	AA		9													
21	NAS1503-25		.	B	O	L	T	(	S	B	'	S	2	9	6	7,	3	0	0	6)							X	DA		12												
22	65-44411-3		.	B	A	R	,	F	I	L	L	E	R	(	S	B	'	S	2	9	6	7,	3	0	0	6)			UX	AA		2										
23	65-44411-4		.	B	A	R	,	F	I	L	L	E	R	(	S	B	'	S	2	9	6	7,	3	0	0	6)			DA	KA		1										
24	NAS42DD6-84		.	S	P	A	C	E	R	(	S	B	'	S	2	9	6	7,	3	0	0	6)					U	AA		1												

OVERHAUL MANUAL

FIG. & ITEM NO.	PART NO.	AIRLINE PART NUMBER	N O M E N C L A T U R E							USE CODE	QTY PER ASSY
			1	2	3	4	5	6	7		
3-25	BACM10N2ELK		.	MARKER,	ALUMINUM	FOIL	(SB'S	2247,		A-F	1
				2967,	3006)						
25	BACM10N2ELL		.	MARKER,	ALUMINUM	FOIL	(SB'S	2967,		G	1
				3006)							
25	BACM10N2ELM		.	MARKER,	ALUMINUM	FOIL	(SB	2247)		HIJ	1
25	BACM10N2ELN		.	MARKER,	ALUMINUM	FOIL	(SB	2247)		KLM	1
25	BACM10N2ELX		.	MARKER,	ALUMINUM	FOIL				N	1
25	BACM10N2ELP		.	MARKER,	ALUMINUM	FOIL	(SB	2247)		OP	1
25	BACM10N2EUU		.	MARKER,	ALUMINUM	FOIL				Q	1
25	BACM10N2EUZ		.	MARKER,	ALUMINUM	FOIL				R	1
25	BACM10N2EVA		.	MARKER,	ALUMINUM	FOIL				S	1
25	BACM10N2EVB		.	MARKER,	ALUMINUM	FOIL				T	1
25	BACM10N2ELR		.	MARKER,	ALUMINUM	FOIL	(SB	2247)		UV	1
25	BACM10N2ELS		.	MARKER,	ALUMINUM	FOIL	(SB	2247)		XY	1
25	BACM10N2ELT		.	MARKER,	ALUMINUM	FOIL	(SB	2247)		AA BA	1
25	BACM10N2ELU		.	MARKER,	ALUMINUM	FOIL	(SB	2247)		DA EA	1
25	BAC27DCA426		.	MARKER,	ALUMINUM	FOIL				KA	1
26	65C16983-1		.	BLOCK,	BUMPER					KA	2

\*[1] NO BOEING ASSIGNED PART NUMBER

\*[2] DENOTES USE ON A-J L M P Q R U-Z BA CA EA-JA

OVERHAUL MANUAL

Part No.	Fig. and Index No.	Qty per. Assy	Part No.	Fig. and Index No.	Qty per. Assy
AN960PD10L	3-	AR	65-37256-28	17	1
AN960PD516L		AR	65-37256-29	17	1
AN960PD716L		AR	65-37256-6	17	1
BAC27DCA426	3	25	65-37256-7	17	1
BACB3ONF5-16	2	6	65-37257-1	17	1
BACB3ONF5-20	3	6	65-37257-2	17	1
BACB3ONF5-7	1	2	65-37257-5	17	1
BACB3ONF5-7	1	6	65-37257-7	17	1
BACB3ONF5-7	1	8	65-43623-1	17	1
BACMLON2ELK	25	1	65-43623-2	17	1
BACMLON2ELL	25	1	65-43623-3	17	1
BACMLON2ELM	25	1	65-43624-1	13	1
BACMLON2ELN	25	1	65-43764-1	18	1
BACMLON2ELP	25	1	65-43764-2	18	1
BACMLON2ELR	25	1	65-43764-3	18	1
BACMLON2ELS	25	1	65-43764-4	18	1
BACMLON2ELT	25	1	65-44395-3	18	1
BACMLON2ELU	25	1	65-44395-4	18	1
BACMLON2ELX	25	1	65-44411-3	22	2
BACMLON2EUY	25	1	65-44411-4	23	1
BACMLON2EUZ	25	1	65-47300-1	3-	RF
BACMLON2EVA	25	1	65-47300-10	3-	RF
BACMLON2EVB	25	1	65-47300-2	3-	RF
BACN10JC3	19	9	65-47300-3	3-	RF
BACN10JC3	19	12	65-47300-4	3-	RF
BACN10JC5	3	6	65-47300-5	3-	RF
BACN10JC5	3	8	65-47300-6	3-	RF
BACW10P115S	4	6	65-47300-7	3-	RF
MS16562-3		AR	65-47300-8	3-	RF
MS24585C89		AR	65-47300-9	3-	RF
NAS1503-25		AR	65-47301-1	3-	RF
NAS42DD6-84		AR	65-47301-2	3-	RF
NAS43HT5-37		AR	65-47301-3	3-	RF
65-37244-2	15	3	65-47301-4	3-	RF
65-37244-2	15	4	65-47301-5	3-	RF
65-37244-2	16	3	65-80213-12	6A	3
65-37244-21	15	3	65-80213-13	3-	RF
65-37244-21	15	4	65-80213-3	3-	RF
65-37244-22	16	3	65-80213-5	3-	RF
65-37244-3	16	3	65-80213-6	3-	RF
65-37256-22	17	1	65C16983-1	3	26
65-37256-23	17	1	66-21266-1	12	1
			66-21714-1	10	1
			66-23325-1	7	6
			66-23325-1	7	8
			69-36364-1	8	3