

**BOEING**   
**COMMERCIAL JET**  
OVERHAUL MANUAL

**QC CARGO SYSTEM SEAT PALLET LATCH  
ASSEMBLY**

**25-56-32**

BOEING P/N 65-49118-1, -2, -3, -5 thru -17, -19 thru -27  
65-51719-22 thru -46, -49 thru -52, -55, -57

AIRLINE P/N

---

---

THE FOLLOWING DIRECTIVES APPLY TO THIS SUBJECT:

BOEING SERVICE BULLETIN	BOEING TEMPORARY REVISION	OTHER DIRECTIVES	DATE DIRECTIVE INCORPORATED INTO TEXT

**BOEING**   
**COMMERCIAL JET**  
**OVERHAUL MANUAL**

LIST OF EFFECTIVE PAGES					
* Indicates pages revised, added or deleted in latest revision					
F Indicates foldout pages - print one side only					
PAGE	DATE	PAGE	DATE	PAGE	DATE
25-56-32					
T-1	Feb 10/75				
T-2	BLANK				
* LEP-1	Dec 25/75				
LEP-2	BLANK				
* T/C-1	Dec 25/75				
T/C-2	BLANK				
1	Feb 10/75				
2	Feb 10/75				
* 2A	Dec 25/75				
* 2B	Dec 25/75				
* 3	BLANK				
4	Feb 10/75				
5	Feb 10/75				
6	Feb 10/75				
7	Feb 10/75				
8	Feb 10/75				
9	BLANK				
10	Feb 10/75				
11	Feb 10/75				
12	Feb 10/75				
13	Feb 10/75				
14	Feb 10/75				
15	Feb 10/75				
16	Feb 10/75				
17	Feb 10/75				
18	Feb 10/75				
19	Feb 10/75				
20	BLANK				

**BOEING**   
**COMMERCIAL JET**  
**OVERHAUL MANUAL**

TABLE OF CONTENTS

<u>Paragraph Title</u>	<u>Page</u>
Description and Operation . . . . .	1
Disassembly . . . . .*[1]	
Cleaning. . . . .*[1]	
Inspection/Check. . . . .	1
Repair. . . . .	2A
Assembly. . . . .	4
Fits and Clearances (not applicable)	
Testing . . . . .	6
Trouble Shooting. . . . .*[1]	
Storage Instructions. . . . .*[1]	
Special Tools, Fixtures, and Equipment (not applicable)	
Illustrated Parts List. . . . .	6

\*[1] Special instructions are not required. Use standard industry practices.

**BOEING**   
**COMMERCIAL JET**  
**OVERHAUL MANUAL**

QC CARGO SYSTEM SEAT PALLET LATCH ASSEMBLY

1. DESCRIPTION AND OPERATION

A. Description

- (1) The pallet latch assembly consists of a spring-loaded hook and handle assembly, a trigger, a cover and a housing.

B. Operation

- (1) The pallet latch is locked by pressing down on the latch handle until the handle engages the trigger. The cover hinges down to conceal the handle.
- (2) The pallet latch is unlocked by raising the cover and rotating the trigger away from the handle. When released, the spring-loaded hook raises the handle to a vertical position.

C. Leading Particulars

Width -- Approx 2.5 inches  
Length -- Approx 13.5 inches

- D. For overhaul of 65-49118-22 thru -26 latch assemblies, refer to manufacturer's overhaul manual (Fig. 6).

2. INSPECTION/CHECK

- A. Check all parts for obvious defects in accordance with standard industry practices.

B. Magnetic/Penetrant Check

- (1) Perform magnetic particle examination per 20-20-01 on:
- (a) Fig. 4 -- Pins (10, 50, 90), trigger (25), hook (110).
  - (b) Fig. 5 -- Pins (10, 35, 75), trigger (25), hook (95).
  - (c) Fig. 7 -- Pins (85, 105), sleeve (80, 100).
  - (d) Fig. 8 -- Sleeve (75), pin (80).
- (2) Perform penetrant examination per 20-20-02 on:
- (a) Fig. 4 -- Fitting (35), handle (95), housing (120).
  - (b) Fig. 5 -- Handle (80), housing (105).

**BOEING**   
**COMMERCIAL JET**  
**OVERHAUL MANUAL**

65-49118  
65-51719

C. Spring Check

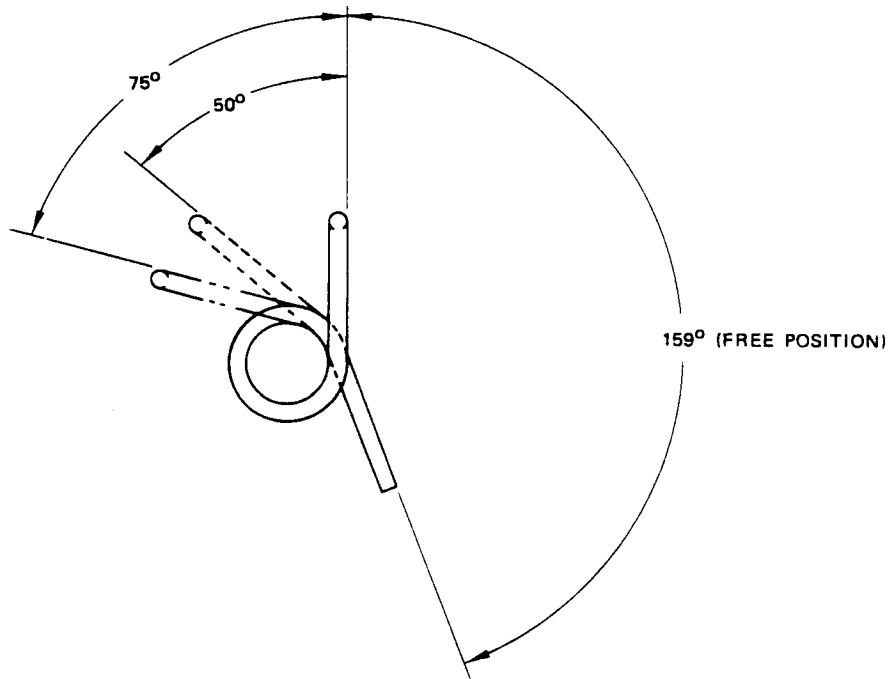
- (1) Check springs (30, Fig. 4), (30, Fig. 5), (40, Fig. 7) and (35, Fig. 8) for load limits per Fig. 1.

Item No.	Test Length (inches)	Allowable Load Limit (pounds)
40, Fig. 7 35, Fig. 8	0.512	10.881-13.299

Compression Spring

Item No. Fig. 4, 5	Test Deflection (Degrees) (from free position)	Allowable Load Limits (pound-inches)
30	50	7.40 to 9.15
	75	11.20 to 13.80

Torsion Spring



Spring Check Data  
Figure 1

**BOEING**   
**COMMERCIAL JET**  
**OVERHAUL MANUAL**

3. REPAIR

NOTE: Refer to 20-30-02 for stripping of protective finishes and to 20-41-01 for explanation of F and SRF finish codes.

A. Refinish

(1) Fig. 4 components

- (a) Pins (10, 90) -- Apply dry film lubricant BMS 3-3, type 1, per 20-50-08. Material: CRES 17-4PH, 180-200 ksi.
- (b) Fitting (35) -- Chromic acid anodize (F-2.20) all over. Material: Al Alloy.
- (c) Pin (50) -- Apply dry film lubricant BMS 3-3, type 1, per 20-50-08. Material: CRES 15-7PH, 220-240 ksi.
- (d) Handle (95) -- Chromic acid anodize (F-2.26) all over. Material: Al Alloy.
- (e) Hook (110) -- Passivate (F-8.07) all over. Material: CRES 15-7PH, 220-240 ksi.
- (f) Housing (120) -- Chromic acid anodize and apply one coat primer BMS 10-11, type 1 (SRF-2.19) all over. See Fig. 2 for final finish. Material: Al Alloy.

(2) Fig. 5 components

- (a) Pins (10, 75) -- Apply dry film lubricant BMS 3-3, type 1, per 20-50-08. Material: CRES 17-4PH, 180-200 ksi.
- (b) Pin (35) -- Apply dry film lubricant BMS 3-3, type 1, per 20-50-08. Material: CRES 15-7PH, 220-240 ksi.
- (c) Handle (80) -- Chromic acid anodize (F-2.26) all over. Material: Al Alloy.
- (d) Hook (95) -- Passivate (F-8.07) all over. Material: CRES 15-7PH, 220-240 ksi.
- (e) Housing (105) -- Chromic acid anodize (F-2.20) all over. Material: Al Alloy.

**BOEING**   
**COMMERCIAL JET**  
**OVERHAUL MANUAL**

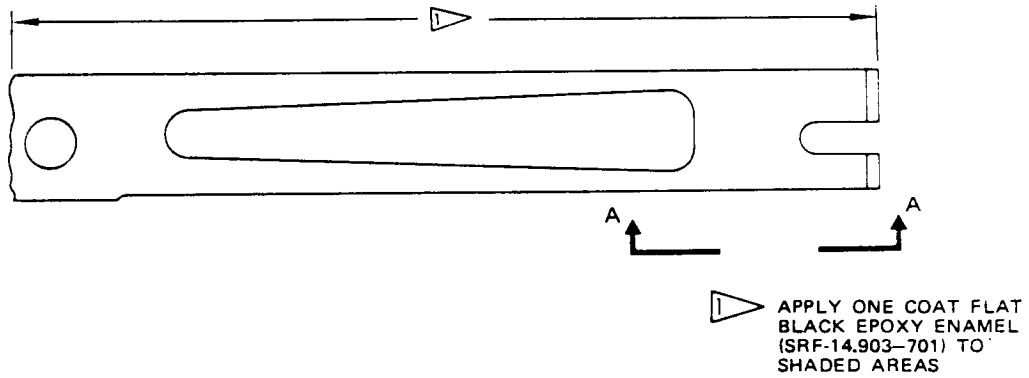
65-49118  
65-51719

- (3) Fig. 7 components
- (a) Support (50), channel (60) -- Passivate (F-8.07) all over. Material: CRES 301.
  - (b) Sleeves (80, 100) -- Passivate (F-8.07) all over. Material: CRES 17-4PH, 180-200 ksi.
  - (c) Pins (85, 105) -- Apply dry film lubricant BMS 3-3, type 1, per 20-50-08. Material: CRES 17-4PH, 180-200 ksi.

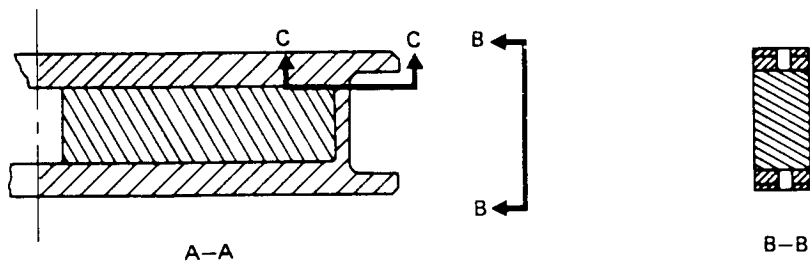
- (4) Fig. 8 components
- (a) Pawl (30), Supports (45, 50), Channel (55) -- Passivate (F-8.07) all over. Material: CRES 301.
  - (b) Sleeve (75) -- Passivate (F-8.07) all over. Material: CRES 17-4PH, 180-200 ksi.
  - (c) Pin (80) -- Apply dry film lubricant BMS 3-3, type 1, per 20-50-08. Material: CRES 17-4PH, 180-200 ksi.

B. Replacement

- (1) Bushings (20, Fig. 4, 5)
- (a) Install new bushings using shrink-fit method per 20-50-03 and primer, BMS 10-11, type 1, on faying surfaces. Install bushings flush to minus 0.005 inch relative to outside faces of trigger.



HOUSING (120)

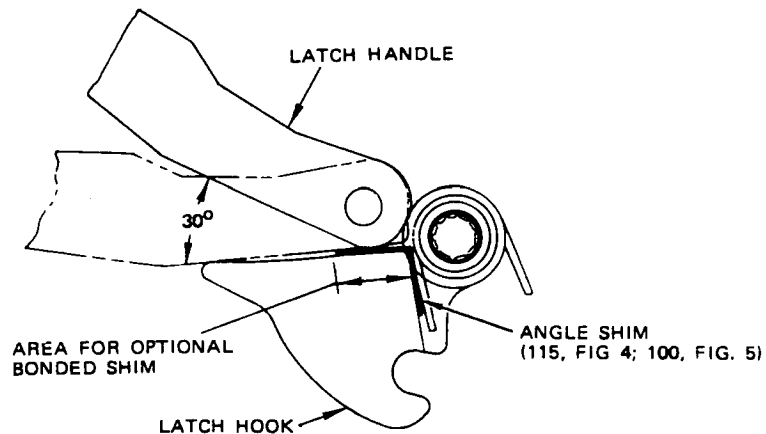




**BOEING**   
**COMMERCIAL JET**  
**OVERHAUL MANUAL**

4. ASSEMBLY

- A. Use standard industry practices for assembly of this component, and additional procedures in steps (1) thru (5).
- (1) Center pin (10, Fig. 4, 5) and tighten setscrew (5) to achieve positive engagement with pin groove.
  - (2) Install setscrew (75, Fig. 4; 65, Fig. 5) so that one or two threads are showing above jamnut. Tighten jamnut. Final adjustment of setscrew is made upon installation in airplane.
  - (3) Center pin (90, Fig. 4; 75, Fig. 5) and tighten setscrew (85, Fig. 4; 70, Fig. 5) to engage annular groove in pin.
  - (4) Install pin (50, Fig. 4; 35, Fig. 5) and ball stake housing (120, Fig. 4; 105, Fig. 5) at each end of pin, four places per 20-50-03.
  - (5) When latch assembly is completely assembled, insert screwdriver in slot of trigger and rotate trigger away from handle to unlatch. When unlatched, it shall not be possible to rotate handle more than 30 degrees from latch hook. If rotation exceeds 30 degrees, shim as indicated in Fig. 3. Approximately 10-degree rotation is desirable for proper operation. If shimming is required, proceed as follows:
    - (a) To install angle shim (115, Fig. 4; 100, Fig. 5), remove latch handle, slip shim between latch hook and torsion spring, and reinstall latch handle.
    - (b) To install optional shim (115, Fig. 4; 100, Fig. 5), remove laminations as required to meet rotation requirements, and bond per 20-50-12, type 38. See Fig. 3 for shim location.
  - (6) Install foil markers per 20-50-05.



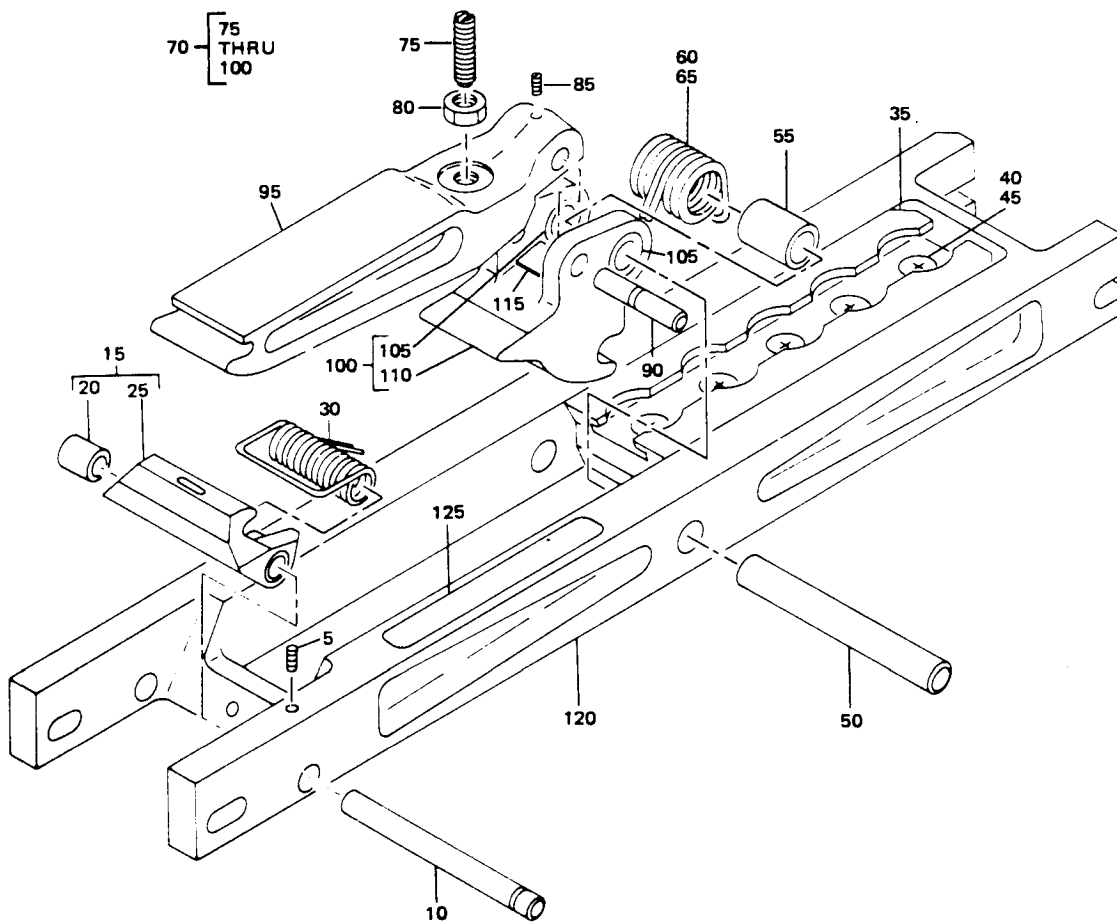
Assembly Check Data  
Figure 3

5. TESTING

A. Functional Test

- (1) Insert a screwdriver in slot of trigger assembly (15, Fig. 4, 5) and rotate trigger away from hook and handle assembly (70, Fig. 4; 55, Fig. 5). Note that hook rotates up smoothly and that tip of hook is above lower surface of housing (120, Fig. 4; 105, Fig. 5).
- (2) Manually rotate handle (95, Fig. 4; 80, Fig. 5) down and note that handle "cams" past trigger (15, Fig. 4, 5) and is positively engaged by trigger dog.
- (3) When unlatched, if handle rotates more than 30 degrees from latch hook shim per par. 4.A.(5).

6. ILLUSTRATED PARTS LIST



QC Cargo System Seat Pallet Latch Assembly  
Figure 4

65-49118  
65-51719

**BOEING**   
**COMMERCIAL JET**  
**OVERHAUL MANUAL**

FIG. & ITEM NO.	PART NO.	AIRLINE PART NUMBER	N O M E N C L A T U R E							USE CODE	QTY PER ASSY
			1	2	3	4	5	6	7		
4-1	65-49118-1		LATCH ASSY, QC CARGO SYSTEM SEAT PALLET							A	RF
1	65-49118-2		LATCH ASSY, QC CARGO SYSTEM SEAT PALLET							B	RF
1	65-49118-3		LATCH ASSY, QC CARGO SYSTEM SEAT PALLET							C	RF
1	65-49118-8		LATCH ASSY, QC CARGO SYSTEM SEAT PALLET							D	RF
1	65-49118-9		LATCH ASSY, QC CARGO SYSTEM SEAT PALLET							E	RF
1	65-49118-13		LATCH ASSY, QC CARGO SYSTEM SEAT PALLET							F	RF
1	65-49118-14		LATCH ASSY, QC CARGO SYSTEM SEAT PALLET							G	RF
1	65-49118-15		LATCH ASSY, QC CARGO SYSTEM SEAT PALLET							H	RF
1	65-49118-16		LATCH ASSY, QC CARGO SYSTEM SEAT PALLET							I	RF
1	65-49118-17		LATCH ASSY, QC CARGO SYSTEM SEAT PALLET							J	RF
5	MS51965-2		. SETSCREW								1
10	69-38420-3		. PIN, TRIGGER								1
15	65-51716-1		. TRIGGER ASSY								1
20	66-24344-2		. . BUSHING								2
25	65-51716-2		. . TRIGGER								1
30	69-38422-1		. SPRING								1
35	66-24349-3		. FITTING (LIMITED USE ON 65-49118-1, -2 AND -3)							ABCGH I	1
35	66-24349-1		. FITTING (OPT TO 66-24349-3)							ABCGH I	1
35	69-43621-1		. FITTING							D	1
35	66-24349-4		. FITTING							EF	1
35	66-24349-3		. FITTING							J	1
40	NAS334CPA5		. BOLT							ABC	5
40	NAS1221-4-4		. SCREW (OPT)							E-J ABC	5
40	NAS334CPA5		. BOLT							D	4
40	NAS1221-4-4		. SCREW (OPT)							D	4
45	MS21042-4		. NUT							ABC	5
45	MS21042-4		. NUT							E-J D	4

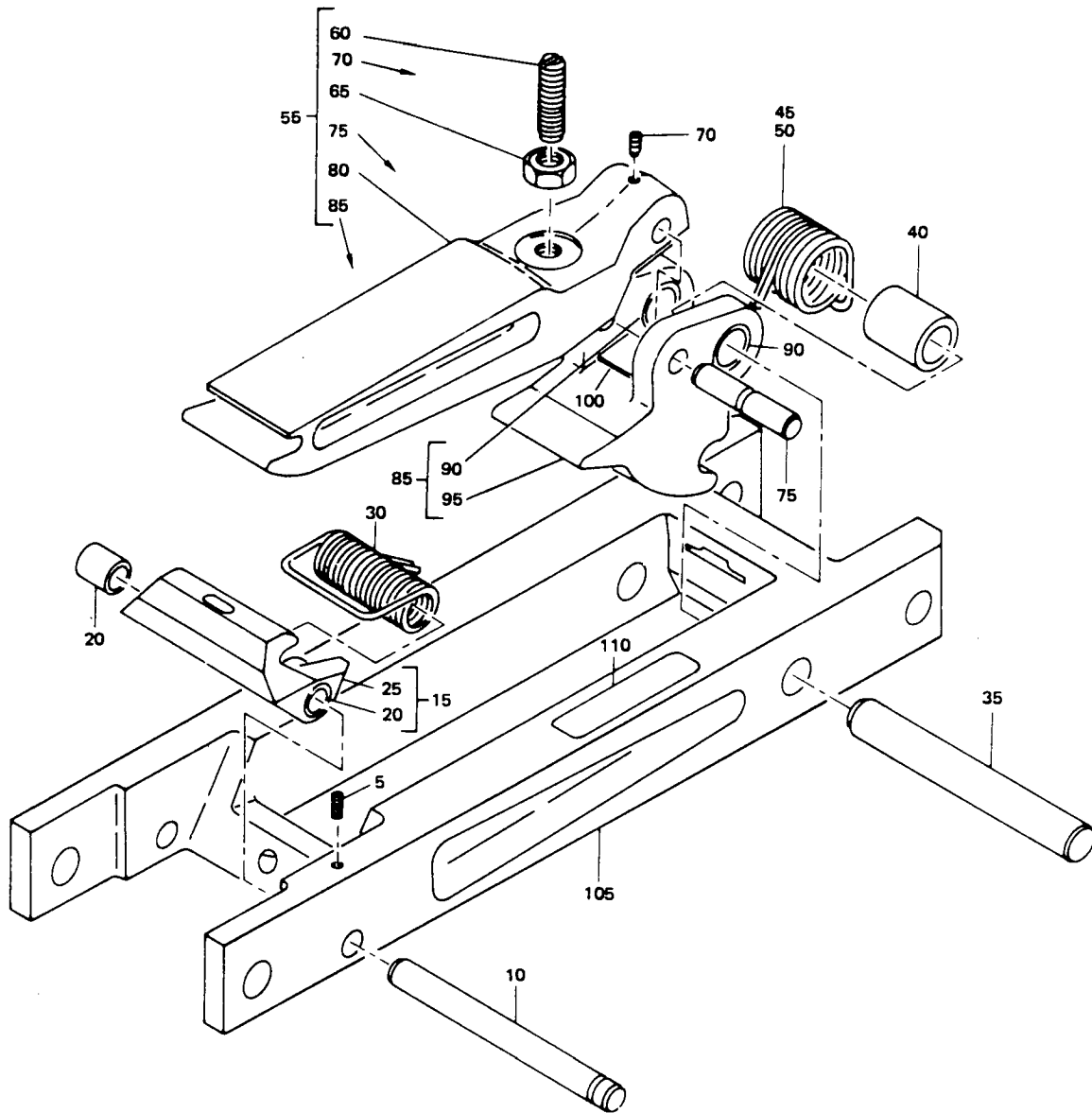
**BOEING**   
**COMMERCIAL JET**  
**OVERHAUL MANUAL**

65-49118  
65-51719

FIG. & ITEM NO.	PART NO.	AIRLINE PART NUMBER	N O M E N C L A T U R E							USE CODE	QTY PER ASSY
			1	2	3	4	5	6	7		
4-											
50	69-38420-1										1
55	NAS43DD6-41										1
60	RCS3171-1										1
65	RCS3171-2										1
70	69-38403-1								AG		1
70	69-38403-2								BH		1
70	69-38403-3								CI		1
70	69-38403-4								DEFJ		1
75	AN565A428H12										1
80	MS35691-8										1
85	AN565F6H3										1
90	69-38420-4										1
95	65-51715-1										1
100	69-39373-1								AG		1
100	69-39373-2								BH		1
100	69-39373-3								CI		1
100	69-43625-1								DEFJ		1
105	66-24344-1										2
110	69-36913-1								AG		1
110	69-36913-2								BH		1
110	69-36913-3								CI		1
110	69-43625-2								DEFJ		1
115	65-49118-18										AR
115	BACS40R05W05										AR
120	69-38402-1								ABC		1
									F-J		
120	69-38402-2								D		1
120	69-38402-3								E		1
125	BACM10L12CDK								A		1
125	BACM10L12CDL								B		1
125	BACM10L12CDM								C		1
125	BACM10L12CDY								D		1
125	BACM10L12CDZ								E		1
125	BAC27DQC83								F		1
125	BAC27DQC117								G		1
125	BAC27DQC118								H		1
125	BAC27DQC119								I		1
125	BAC27DQC120								J		1

VENDORS

V08205      RENTON COIL SPRING CO., P.O. BOX 328, 325 BURNETT NORTH, RENTON,  
WASH 98055



QC Cargo System Seat Pallet Latch Assembly  
Figure 5

65-49118  
65-51719

**BOEING**   
**COMMERCIAL JET**  
**OVERHAUL MANUAL**

FIG. & ITEM NO.	PART NO.	AIRLINE PART NUMBER	N O M E N C L A T U R E							USE CODE	QTY PER ASSY
			1	2	3	4	5	6	7		
5-1	65-49118-5		LATCH ASSY, QC CARGO SYSTEM SEAT PALLET							A	RF
1	65-49118-6		LATCH ASSY, QC CARGO SYSTEM SEAT PALLET							B	RF
1	65-49118-7		LATCH ASSY, QC CARGO SYSTEM SEAT PALLET							C	RF
1	65-49118-10		LATCH ASSY, QC CARGO SYSTEM SEAT PALLET							D	RF
1	65-49118-11		LATCH ASSY, QC CARGO SYSTEM SEAT PALLET							E	RF
1	65-49118-12		LATCH ASSY, QC CARGO SYSTEM SEAT PALLET							F	RF
1	65-49118-19		LATCH ASSY, QC CARGO SYSTEM SEAT PALLET							G	RF
1	65-49118-20		LATCH ASSY, QC CARGO SYSTEM SEAT PALLET							H	RF
1	65-49118-21		LATCH ASSY, QC CARGO SYSTEM SEAT PALLET							I	RF
1	65-49118-27		LATCH ASSY, QC CARGO SYSTEM SEAT PALLET							J	RF
5	MS51965-20		. SETSCREW								1
10	69-38420-3		. PIN								1
15	65-51716-1		. TRIGGER ASSY								1
20	66-24344-2		. . BUSHING								2
25	65-51716-2		. . TRIGGER								1
30	69-38422-1		. SPRING								1
35	69-38420-1		. PIN								1
40	NAS43DD6-41		. SPACER								1
45	RCS3171-1		. SPRING (V08205)								1
50	RCS3171-2		. SPRING (V08205)								1
55	69-38403-3		. HOOK AND HANDLE ASSY							AJ	1
55	69-38403-1		. HOOK AND HANDLE ASSY							BG	1
55	69-38403-2		. HOOK AND HANDLE ASSY							CH	1
55	69-38403-4		. HOOK AND HANDLE ASSY							DEFI	1
60	AN565A428H12		. . SETSCREW								1
65	MS35691-8		. . NUT								1
70	AN565F6H3		. . SETSCREW								1
75	69-38420-4		. . PIN								1
80	65-51715-1		. . HANDLE								1
85	69-39373-3		. . HOOK ASSY							AJ	1
85	69-39373-1		. . HOOK ASSY							BG	1
85	69-39373-2		. . HOOK ASSY							CH	1

**BOEING**   
**COMMERCIAL JET**  
**OVERHAUL MANUAL**

65-49118  
65-51719

FIG. & ITEM NO.	PART NO.	AIRLINE PART NUMBER	N O M E N C L A T U R E							USE CODE	QTY PER ASSY
			1	2	3	4	5	6	7		
5-85	69-43625-1		.	.						DEFI	1
90	66-24344-1		.	.	.						2
95	69-36913-3		.	.	.					AJ	1
95	69-36913-1		.	.	.					BG	1
95	69-36913-2		.	.	.					CH	1
95	69-43625-2		.	.	.					DEFI	1
100	65-49118-18		.								AR
100	BACS40R05W05		.								AR
105	65-49133-1		.							A-D	1
105	65-49133-2		.							E	1
105	65-49133-3		.							F	1
105	65-49133-4		.							G-J	1
110	BACML0N2ERM		.							A	1
110	BACML0N2ESW		.							B	1
110	BACML0N2ESX		.							C	1
110	BAC27DQC38		.							D	1
110	BAC27DQC73		.							E	1
110	BAC27DQC74		.							F	1
110	BAC27DQC131		.							G	1
110	BAC27DQC132		.							H	1
110	BAC27DQC133		.							I	1
110	BAC27DCA124		.							J	1

VENDORS

V08205      RENTON COIL SPRING CO., P.O. BOX 328, 325 BURNETT NORTH, RENTON, WASH.  
98055

65-49118  
65-51719

**BOEING**   
**COMMERCIAL JET**  
**OVERHAUL MANUAL**

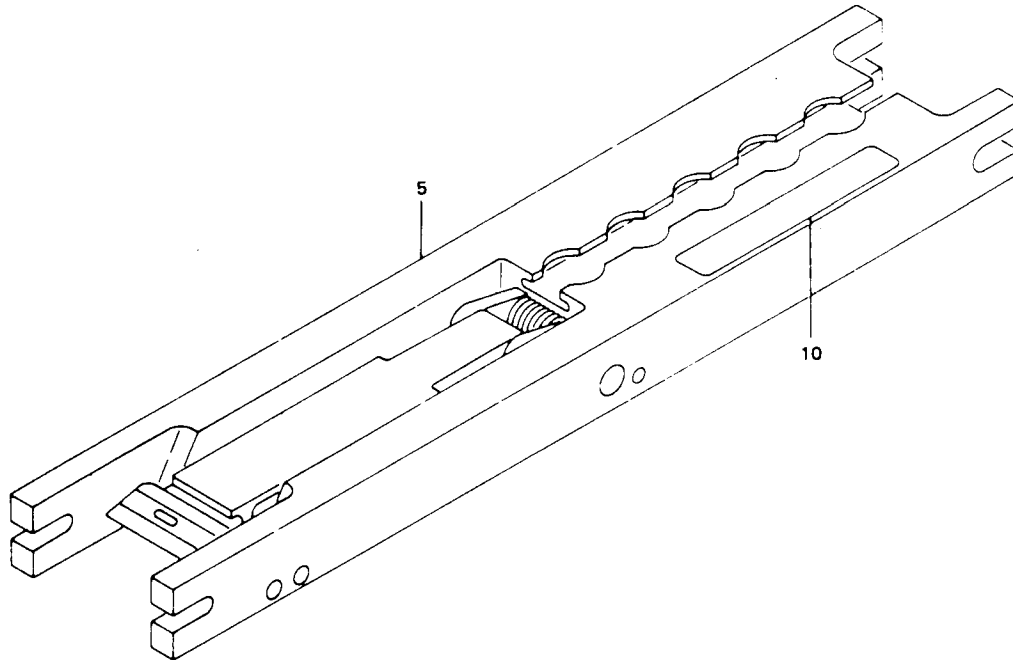


FIG. & ITEM NO.	PART NO.	AIRLINE PART NUMBER	N O M E N C L A T U R E							USE CODE	QTY PER ASSY
			1	2	3	4	5	6	7		
6-1	65-49118-22		LATCH ASSY, QC CARGO SYSTEM SEAT PALLET							A	RF
1	65-49118-23		LATCH ASSY, QC CARGO SYSTEM SEAT PALLET							B	RF
1	65-49118-24		LATCH ASSY, QC CARGO SYSTEM SEAT PALLET							C	RF
1	65-49118-25		LATCH ASSY, QC CARGO SYSTEM SEAT PALLET							D	RF
1	65-49118-26		LATCH ASSY, QC CARGO SYSTEM SEAT PALLET							E	RF
5	23247-61		. LATCH ASSY (V95957)							A	1
5	23247-64		. LATCH ASSY (V95957)							B	1
5	23247-63		. LATCH ASSY (V95957)							C	1
5	23247-65		. LATCH ASSY (V95957)							D	1
5	23247-62		. LATCH ASSY (V95957)							E	1
10	BAC27DQC126		. MARKER, FOIL							A	1
10	BAC27DQC127		. MARKER, FOIL							B	1
10	BAC27DQC128		. MARKER, FOIL							C	1
10	BAC27DQC129		. MARKER, FOIL							D	1
10	BAC27DQC130		. MARKER, FOIL							E	1

VENDORS

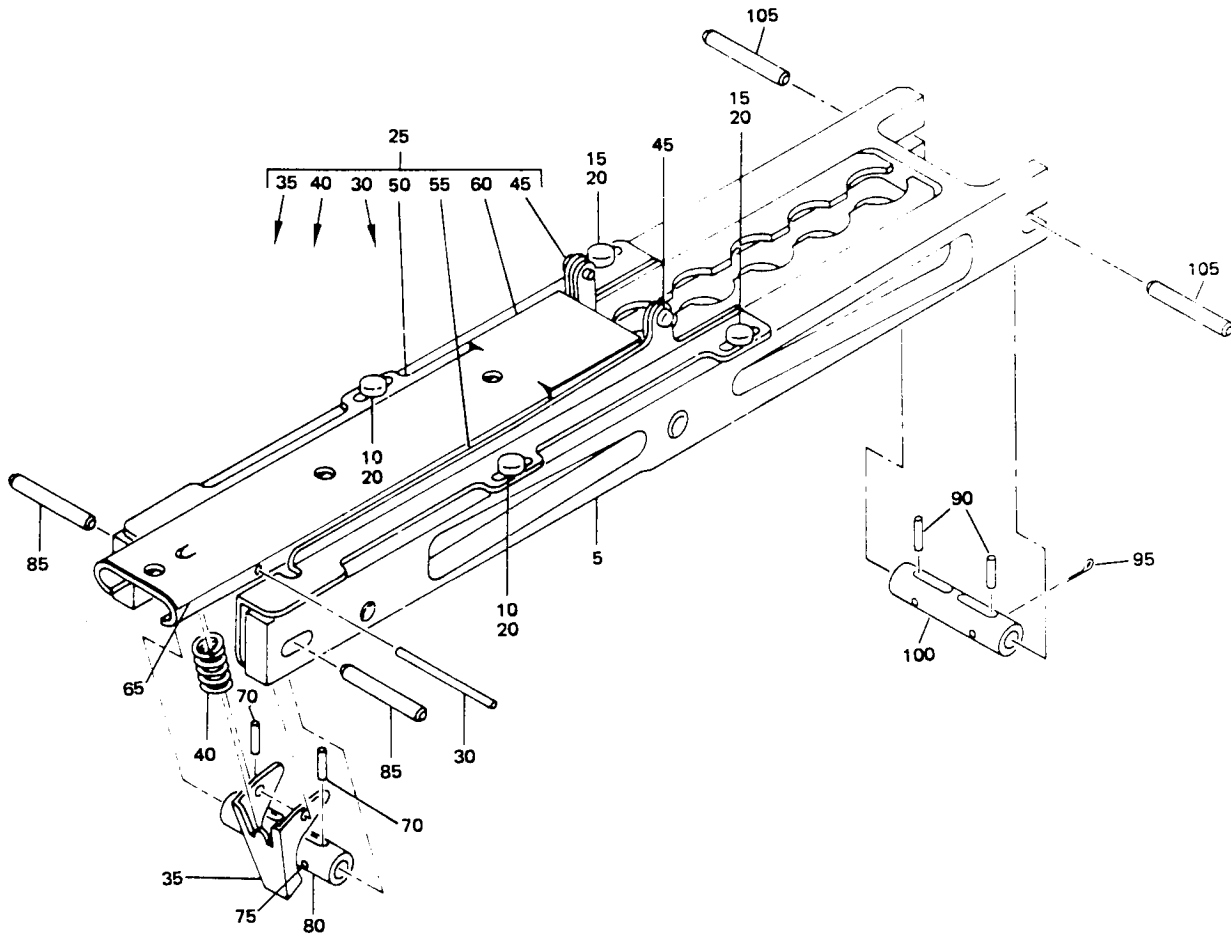
V95957 BROWNLIN DIVISION OF TRIDAIR INDUSTRIES, 3000 W. LOMITA BLVD., TORRANCE, CALIFORNIA 90505

QC Cargo System Seat Pallet Latch Assembly  
Figure 6

Feb 10/75

25-56-32  
Page 13





QC Cargo System Seat Pallet Latch Assembly  
Figure 7

65-49118  
65-51719

**BOEING**   
**COMMERCIAL JET**  
**OVERHAUL MANUAL**

FIG. & ITEM NO.	PART NO.	AIRLINE PART NUMBER	N O M E N C L A T U R E							USE CODE	QTY PE ASSY
			1	2	3	4	5	6	7		
7-											
1	65-51719-22									A	RF
1	65-51719-23									B	RF
1	65-51719-24									C	RF
1	65-51719-25									D	RF
1	65-51719-26									E	RF
1	65-51719-27									F	RF
1	65-51719-28									G	RF
1	65-51719-29									H	RF
1	65-51719-30									I	RF
1	65-51719-34									J	RF
1	65-51719-35									K	RF
1	65-51719-36									L	RF
1	65-51719-37									M	RF
1	65-51719-38									N	RF
1	65-51719-39									O	RF
1	65-51719-40									P	RF
1	65-51719-41									Q	RF
1	65-51719-42									R	RF
1	65-51719-43									S	RF
1	65-51719-44									T	RF
1	65-51719-45									U	RF

**BOEING**  
**COMMERCIAL JET**  
**OVERHAUL MANUAL**

65-49118  
65-51719

FIG. & ITEM NO.	PART NO.	AIRLINE PART NUMBER	N O M E N C L A T U R E							USE CODE	QTY PE ASSY
			1	2	3	4	5	6	7		
7-1	65-51719-46		LATCH ASSY, QC CARGO SYSTEM SEAT AND GALLEY PALLET							V	RF
1	65-51719-49		LATCH ASSY, QC CARGO SYSTEM SEAT AND GALLEY PALLET							W	RF
1	65-51719-50		LATCH ASSY, QC CARGO SYSTEM SEAT AND GALLEY PALLET							X	RF
1	65-51719-51		LATCH ASSY, QC CARGO SYSTEM SEAT AND GALLEY PALLET							Y	RF
1	65-51719-52		LATCH ASSY, QC CARGO SYSTEM SEAT AND GALLEY PALLET							Z	RF
5	65-49118-22		. LATCH ASSY (FIG. 6)							A	1
5	65-49118-3		. LATCH ASSY (FIG. 4) (OPT)							A	1
5	65-49118-23		. LATCH ASSY (FIG. 6)							B	1
5	65-49118-1		. LATCH ASSY (FIG. 4) (OPT)							B	1
5	65-49118-24		. LATCH ASSY (FIG. 6)							C	1
5	65-49118-2		. LATCH ASSY (FIG. 4) (OPT)							C	1
5	65-49118-25		. LATCH ASSY (FIG. 6)							D	1
5	65-49118-8		. LATCH ASSY (FIG. 4) (OPT)							D	1
5	65-49118-26		. LATCH ASSY (FIG. 6)							E	1
5	65-49118-13		. LATCH ASSY (FIG. 4) (OPT)							E	1
5	65-49118-23		. LATCH ASSY (FIG. 6)							F	1
5	65-49118-14		. LATCH ASSY (FIG. 4) (OPT)							F	1
5	65-49118-24		. LATCH ASSY (FIG. 6)							G	1
5	65-49118-15		. LATCH ASSY (FIG. 4) (OPT)							G	1
5	65-49118-22		. LATCH ASSY (FIG. 6)							H	1
5	65-49118-16		. LATCH ASSY (FIG. 4) (OPT)							H	1
5	65-49118-26		. LATCH ASSY (FIG. 6)							I	1
5	65-49118-17		. LATCH ASSY (FIG. 4) (OPT)							I	1
5	65-49118-22		. LATCH ASSY (FIG. 6)							J	1
5	65-49118-3		. LATCH ASSY (FIG. 4) (OPT)							J	1
5	65-49118-26		. LATCH ASSY (FIG. 6)							K	1
5	65-49118-13		. LATCH ASSY (FIG. 4) (OPT)							K	1
5	65-49118-22		. LATCH ASSY (FIG. 6)							L	1
5	65-49118-16		. LATCH ASSY (FIG. 4) (OPT)							L	1
5	65-49118-26		. LATCH ASSY (FIG. 6)							M	1
5	65-49118-17		. LATCH ASSY (FIG. 4) (OPT)							M	1
5	65-49118-26		. LATCH ASSY (FIG. 6)							N	1
5	65-49118-17		. LATCH ASSY (FIG. 4) (OPT)							N	1
5	65-49118-23		. LATCH ASSY (FIG. 6)							O	1
5	65-49118-14		. LATCH ASSY (FIG. 4) (OPT)							O	1
5	65-49118-24		. LATCH ASSY (FIG. 6)							P	1
5	65-49118-15		. LATCH ASSY (FIG. 4) (OPT)							P	1

65-49118  
65-51719

**BOEING**   
**COMMERCIAL JET**  
**OVERHAUL MANUAL**

FIG. & ITEM NO.	PART NO.	AIRLINE PART NUMBER	N O M E N C L A T U R E							USE CODE	QTY PE ASSY
			1	2	3	4	5	6	7		
7-											
5	65-49118-22		.	LATCH ASSY (FIG. 6)						Q	1
5	65-49118-3		.	LATCH ASSY (FIG. 4) (OPT)						Q	1
5	65-49118-26		.	LATCH ASSY (FIG. 6)						R	1
5	65-49118-13		.	LATCH ASSY (FIG. 4) (OPT)						R	1
5	65-49118-23		.	LATCH ASSY (FIG. 6)						S	1
5	65-49118-1		.	LATCH ASSY (FIG. 4) (OPT)						S	1
5	65-49118-24		.	LATCH ASSY (FIG. 6)						T	1
5	65-49118-2		.	LATCH ASSY (FIG. 4) (OPT)						T	1
5	65-49118-26		.	LATCH ASSY (FIG. 6)						U	1
5	65-49118-13		.	LATCH ASSY (FIG. 4) (OPT)						U	1
5	65-49118-26		.	LATCH ASSY (FIG. 6)						V	1
5	65-49118-13		.	LATCH ASSY (FIG. 4) (OPT)						V	1
5	65-49118-26		.	LATCH ASSY (FIG. 6)						W	1
5	65-49118-13		.	LATCH ASSY (FIG. 4) (OPT)						W	1
5	65-49118-26		.	LATCH ASSY (FIG. 6)						X	1
5	65-49118-13		.	LATCH ASSY (FIG. 4) (OPT)						Y	1
5	65-49118-1		.	LATCH ASSY (FIG. 4) (OPT)						Y	1
5	65-49118-24		.	LATCH ASSY (FIG. 6)						Z	1
5	65-49118-2		.	LATCH ASSY (FIG. 4) (OPT)						Z	1
10	AN121603		.	PIN						A-IN-Z	2
15	AN121604		.	PIN						ABCE-IN-Z	2
15	AN121603		.	PIN						D	2
20	MS24665-132		.	PIN, COTTER						A-IN-Z	4
25	65-65641-1		.	HINGE ASSY, LOCK COVER						A-INO PSTUX YZ	1
25	65-65641-4		.	HINGE ASSY, LOCK COVER						QRV	1
25	65-65641-5		.	HINGE ASSY, LOCK COVER						W	1
30	MS171508		.	PIN							1
35	69-53258-1		.	PAWL							1
40	69-53257-1		.	SPRING							1
45	BACR15BZ4-2		.	RIVET							2
50	69-53421-1		.	SUPPORT (USED ON 65-65641-1,-5)							1
50	69-53421-3		.	SUPPORT (USED ON 65-65641-4)							1
55	69-53421-2		.	SUPPORT (USED ON 65-65641-1,-5)							1
55	69-53421-4		.	SUPPORT (USED ON 65-65641-4)							1
60	69-53422-1		.	CHANNEL (USED ON 65-65641-1)							1
60	69-53422-2		.	CHANNEL (USED ON 65-65641-4)							1
60	69-53422-3		.	CHANNEL (USED ON 65-65641-5)							1

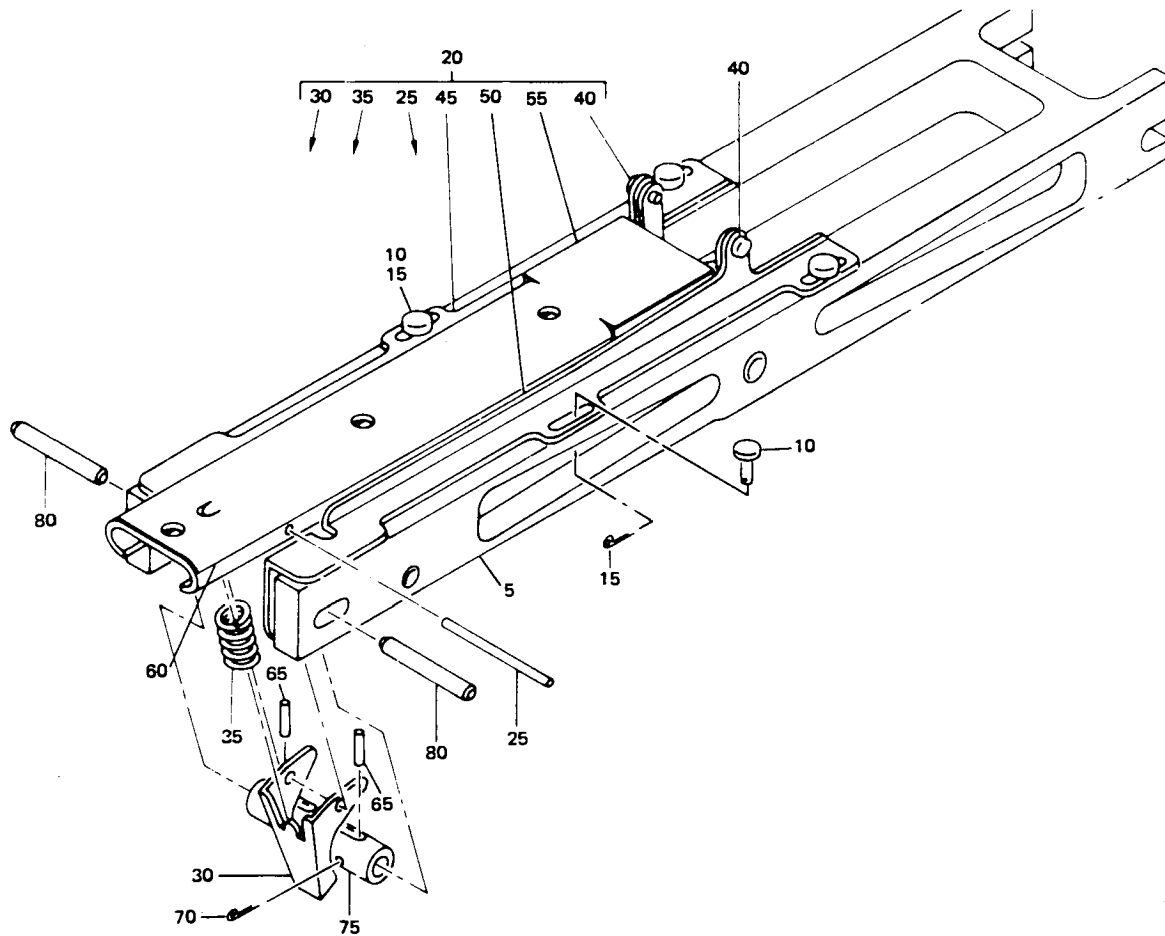
**BOEING**   
**COMMERCIAL JET**  
**OVERHAUL MANUAL**

65-49118  
65-51719

FIG. & ITEM NO.	PART NO.	AIRLINE PART NUMBER	N O M E N C L A T U R E							USE CODE	QTY PER ASSY
			1	2	3	4	5	6	7		
7-											
65	65-65641-3										1
70	MS16562-197										2
75	MS24665-231										2
80	66-23622-1										1
85	69-38420-2										2
90	MS16562-197									NOPR-U	2
95	MS24665-231									NOPR-U	2
100	66-23622-1									NOPR-U	1
105	69-38420-2									NOPR-U	2

VENDORS

V26066 MINNESOTA MINING AND MANUFACTURING CO., INDUSTRIAL TAPE DIVISION,  
3M CENTER, ST. PAUL, MINN. 55101



QC Cargo System Seat Pallet Latch Assembly  
Figure 8

65-49118  
65-51719

**BOEING**   
**COMMERCIAL JET**  
**OVERHAUL MANUAL**

FIG. & ITEM NO.	PART NO.	AIRLINE PART NUMBER	N O M E N C L A T U R E							USE CODE	QTY PER ASSY
			1	2	3	4	5	6	7		
8-											
1	65-51719-31									A	RF
1	65-51719-32									B	RF
1	65-51719-33									C	RF
1	65-51719-55									D	RF
1	65-51719-57									E	RF
5	65-49118-19									A	1
5	65-49118-20									B	1
5	65-49118-21									C	1
5	65-49118-27									D	1
5	65-49118-21									E	1
10	AN121603									A-D	4
15	MS24665-132									A-D	4
20	65-65641-2									A-D	1
25	MS171508										1
30	69-53258-1										1
35	69-53257-1										1
40	BACR15BZ4-2										2
45	69-54433-1										1
50	69-54433-2										1
55	69-53422-2										1
60	65-65641-3										1
65	MS16562-197										2
70	MS24665-231										2
75	66-23622-1										1
80	69-38420-2										2

VENDORS

V26066 MINNESOTA MINING AND MANUFACTURING CO., INDUSTRIAL TAPE DIVISION,  
3M CENTER, ST. PAUL, MINN. 55101