

**OVERHAUL MANUAL**

TO: ALL HOLDERS OF PALLETIZED CARGO SYSTEM SEAT PALLET ATTACH FITTING ASSEMBLY  
OVERHAUL MANUAL, 25-56-33

REVISION NO. 1, DATED JUN 5/84

HIGHLIGHTS

DESCRIPTION OF CHANGE	TOPICS AFFECTED												
	D & O	D / A s s y	C l e a n i n g	I n s p / C h k	R e p a i r	A s s y	F / C	T e s t	T / S h o o t i n g	S / T O O L S	S t o r a g e	I P L	L / O v e r h a u l
<p align="center"><u>NOTE</u></p> <p>Beginning with this revision separate consecutively numbered highlight sheets will be provided whenever this subject is revised</p> <p>Added attach fitting assemblies 65-76944-4, -10, -41 per PRR 33237</p> <p>Added pin (45), plunger (535), lockhead (545) and stop (550) into magnetic particle check and repair section.</p> <p>Added fittings (425, 555, 560) into penetrant check and repair section.</p> <p>Added operational test</p>													
													X
				X	X								
				X	X								
								X					

# SEAT PALLET ATTACH FITTING ASSEMBLY

## 25-56-33

BOEING P/N 65-76944-1 thru -10, -14, -16, -18, -19, -22, -23,  
-25 thru -28, -36, -38, -39, -41

AIRLINE P/N

---

THE FOLLOWING DIRECTIVES APPLY TO THIS SUBJECT:

BOEING SERVICE BULLETIN	BOEING TEMPORARY REVISION	OTHER DIRECTIVES	DATE DIRECTIVE INCORPORATED INTO TEXT
		PRR 32070-1 PRR 33237	Mar 10/72 Jun 5/84

OVERHAUL MANUAL

LIST OF EFFECTIVE PAGES

\* Indicates pages revised, added or deleted in latest revision  
 F Indicates foldout pages - print one side only

PAGE	DATE	PAGE	DATE	PAGE	DATE
25-56-33					
* T-1	Jun 5/84				
T-2	BLANK				
* LEP-1	Jun 5/84				
LEP-2	BLANK				
* T/C-1	Jun 5/84				
T/C-2	BLANK				
* 1	Jun 5/84				
2	Jun 25/74				
* 3	Jun 5/84				
* 4	Jun 5/84				
* 4A	Jun 5/84				
* 4B	Jun 5/84				
* 5	Jun 5/84				
* 6	Jun 5/84				
* 7	Jun 5/84				
8	Jun 25/74				
9	Mar 10/72				
10	Mar 10/72				
11	Mar 10/72				
12	Mar 10/72				
13	Mar 10/72				
14	Mar 10/72				
15	Mar 10/72				
16	Mar 10/72				
* 17	Jun 5/84				
* 18	Jun 5/84				
* 19	Jun 5/84				
* 20	Jun 5/84				
* 21	Jun 5/84				
* 22	Jun 5/84				
* 23	Jun 5/84				
* 24	Jun 5/84				



OVERHAUL MANUAL

TABLE OF CONTENTS

<u>Paragraph Title</u>	<u>Page</u>
Description and Operation . . . . .	1
Disassembly . . . . .	.*[1]
Cleaning. . . . .	.*[1]
Inspection/Check. . . . .	1
Repair. . . . .	3
Assembly. . . . .	7
Fits and Clearances . . . . .	7
Testing . . . . .	7
Trouble Shooting. . . . .	.*[1]
Storage Instructions. . . . .	.*[1]
Special Tools, Fixtures, and Equipment (not applicable)	
Illustrated Parts List. . . . .	8

\*[1] Special instructions are not required. Use standard industry practices.

## OVERHAUL MANUAL

SEAT PALLET ATTACH FITTING ASSEMBLY1. DESCRIPTION AND OPERATION

A. The seat pallet attach fitting assembly consists of a retractable side guide assembly and attach bracket or roller assembly bracket fastened to a seat pallet attach fitting. The seat pallet attach fitting assembly is used for attaching convertible airplane seat pallets. Side guide assemblies can be raised to permit the guiding of pallets. The assembly fastens to airplane seat tracks with seat track shear studs.

## B. Leading Particulars

Width -- 5 to 10 inches  
Length -- 4 to 12 inches  
Height -- 1 to 3 inches

2. INSPECTION/CHECK (Fig. 4)

A. Check all parts for obvious defects in accordance with standard industry practices.

## B. Magnetic/Penetrant Check

(1) Perform magnetic particle examination per 20-20-01 on tension bolts (15), studs (20, 30), pins (45, 210, 265), lip (230), rail (300), trigger (340), supports (390), plunger (535), lockhead (545) and stop (550).

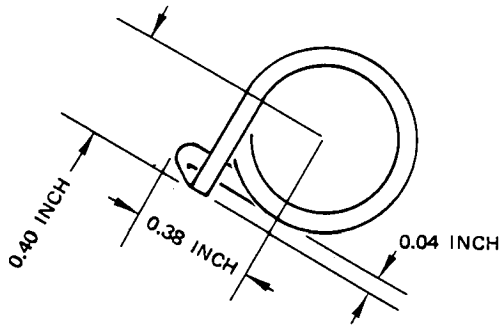
(2) Perform penetrant examination per 20-20-02 on springs (25, 225, 275, 325, 330), brackets (130, 135, 140, 145, 155, 160), bearing (335), link (335), and fittings (400, 405, 410, 415, 420, 425, 555, 560).

## C. Spring Check

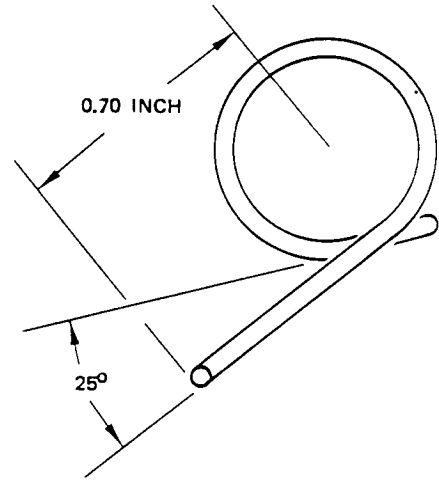
(1) Check springs (225, 275, 325, 330) for load limits per Fig. 1.

NOTE: Free position of arms determines zero-deflection position. Deflections must be measured from this position to establish allowable load limits.

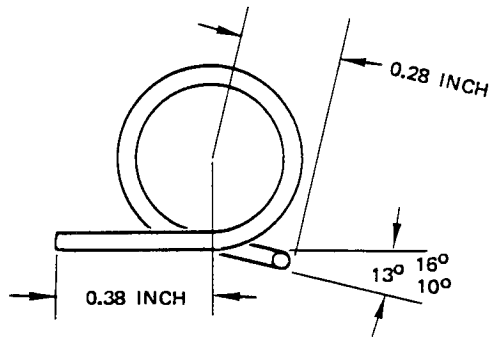
OVERHAUL MANUAL



SPRING (225)



SPRING (275)



SPRING (325), (330) OPPOSITE

Item No. Fig. 4	Test Deflection (Degrees)	Allowable Load Limits (Pound-Inches)
225	93	0.30 - 0.36
	196	0.64 - 0.78
275	74	1.5 - 1.9
	200	4.2 - 5.2
325, 330	46	0.3 - 0.5
	120	0.9 - 1.1

## OVERHAUL MANUAL

3. REPAIR (Fig. 4)

## A. Materials

NOTE: Use listed materials or equivalent substitutes.

- (1) Primer -- BMS 10-11, type 1 (Ref 20-60-02)
- (2) Conversion coating -- Alodine 1200 (Ref 20-60-02)
- (3) Enamel -- BMS 10-11, type 2, clear epoxy enamel, Andrew Brown System (Ref 20-60-02)

## B. Repair

- (1) Use standard industry practices for repair of this component, and additional procedures in step (2).
- (2) Remove corroded material adjacent to springs (25) and bolts (15) as follows:
  - (a) Increase bolt hole diameter to 0.31-inch maximum through fittings (395, 400, 405, 410, 415, 420, 425, 550, 555) per Fig. 2.
  - (b) Increase slot depth in base of fittings (395, 400, 405, 410, 415, 420, 425, 550, 555) to 0.15-inch maximum per Fig. 2.
  - (c) Refinish all repaired surfaces with brush Alodine 1200 and two coats BMS 10-11, type 1 primer. Apply final finish as specified in Refinish instructions.

## C. Refinish

NOTE: Refer to 20-30-02 for stripping of protective finishes and to 20-41-01 for explanation of F and SRF finish codes.

- (1) Bolt (15) -- Apply cadmium plate (F-14.16) all over plus (2) 0.0008-inch thick coats of BMS 10-11, type 1 primer (maximum 0.0016 inch) to indicated surfaces in Fig. 2. Diameter after primer application to be 0.247 to 0.260 inch. Material: CRES 17-4PH, 180-200 ksi.

NOTE: Abrasion-resistant finish (SRF-14.9625) optional to BMS 10-11, type 1 primer.

- (2) Stud (20) -- Apply cadmium-titanium plate (F-1.181) all over. Material: Steel, 18-9-5 MAS, 280-285 ksi.

## OVERHAUL MANUAL

- (3) Spring (25) -- Nickel plate per MIL-C-26074A, class 2, thickness 0.0005 to 0.0010 inch all over. Material: Spring steel, SAE1095.
- (4) Stud (30) -- Apply cadmium plate plus one coat BMS 10-11, type 1 primer (SRF-1.285) all over. Material: Steel, AMS 4140, 160-180 ksi.
- (5) Pin (45) -- Apply cadmium plate (F-1.191) all over. Material: CRES 17-4PH, 180-200 ksi.
- (6) Roller (80) and brackets (130, 135, 140, 145, 155, 160) -- Apply chromic acid anodize (F-2.20) all over. Material: Al Alloy.
- (7) Pin (215) -- Passivate (F-8.07) all over. Material: CRES 15-7PH.
- (8) Springs (225, 275) -- Apply cadmium plate plus one coat BMS 10-11, type 1 primer (SRF-1.92) all over. Material: Music wire.
- (9) Lip (230) -- Passivate (F-8.07) all over plus one coat red BMS 10-11, type 2 enamel (SRF-14.905-101) on surfaces indicated in Fig. 2. Color match not required. Material: CRES 17-4PH, 180-200 ksi.
- (10) Pin (265) -- Passivate (F-8.07) all over and apply dry film lubricant BMS 3-3, type 1, per 20-50-08. Material: CRES 17-4PH, 180-200 ksi.
- (11) Rail (300), trigger (340) -- Passivate (F-8.07) all over. Material: CRES 17-4PH, 180-200 ksi.

CAUTION: NO EPOXY PERMITTED IN ID OF BUSHING.

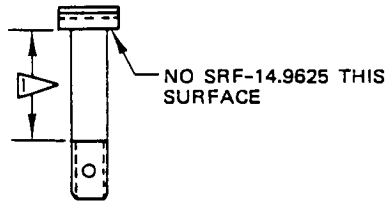
- (12) Rail assembly (280) -- Apply one coat red BMS 10-11, type 2 enamel (SRF-14.905-101) on surfaces indicated in Fig. 2. Color match not required.
- | (13) Springs (325, 330) -- Apply cadmium plate (F-1.191) all over. Material: Music wire.
- | (14) Link (355) -- Apply chromic acid anodize (F-2.20) all over plus one coat BMS 10-11, type 1 primer (SRF-12.205) in holes. Material: Al Alloy.
- | (15) Support (390) -- Passivate (F-8.07) all over plus BMS 3-8, class A dry lubricant (F-19.10) on entire surface of slot shown in Fig. 2, per 20-50-08, overspray permitted. Material: CRES 17-4PH, 180-200 ksi.



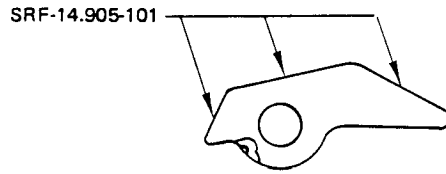
## OVERHAUL MANUAL

- (16) Fittings (395, 400, 405, 420) -- Apply Alodine 1200 or chromic acid anodize (F-2.22) all over plus (SRF-12.205) all over. Apply one coat red BMS 10-11, type 2 enamel (SRF-14.905-101) in countersink pockets. Apply one coat black BMS 10-11, type 2 enamel, semigloss (SRF-14.904-701) to fittings (405, 420) per Fig. 2. Material: Al Alloy.
- (17) Fittings (410, 415) -- Apply Alodine 1200 or chromic acid anodize (F-2.22) all over plus one coat BMS 10-11, type 1 primer (SRF-12.205) all over. Material: Al Alloy.
- (18) Handle (515) -- Chromic acid anodize (F-2.20) all over. Material: Al Alloy.
- (19) Plunger (535) -- Passivate (F-8.07) all over. Material: 17-4 CRES, 180-200 ksi.
- (20) Lockhead (545) -- Apply one coat red BMS 10-11, type 2 enamel (SRF-14.905-101) on surfaces indicated in Fig. 2. Color match not required. Material: 17-4PH CRES, 180-220 ksi.
- (21) Stop (550) -- Passivate (F-8.07) all over. Material: 17-4PH CRES, 180-200 ksi.

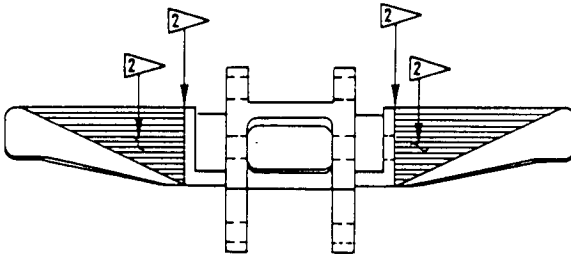
OVERHAUL MANUAL



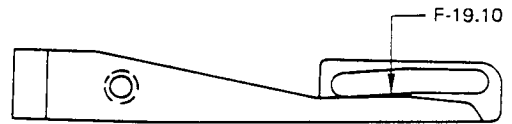
BOLT (15)



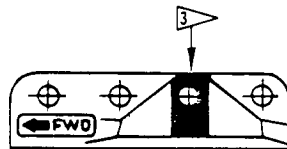
LIP (230)



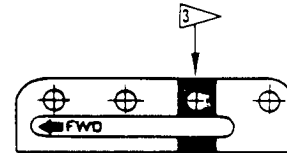
RAIL ASSEMBLY (280)



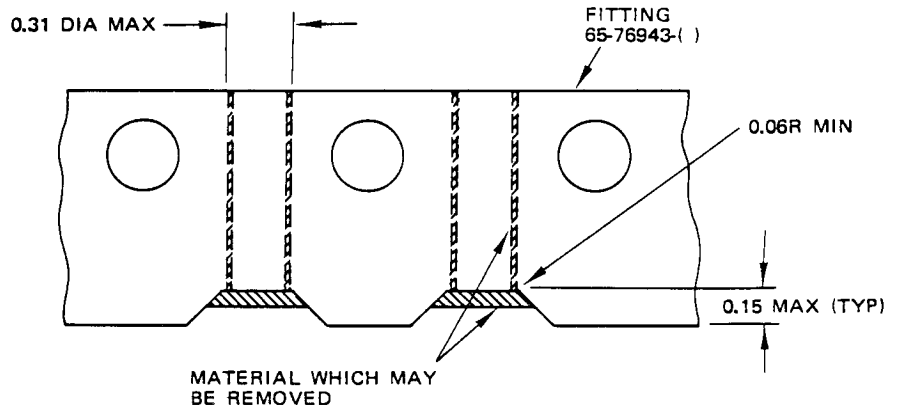
SUPPORT (390)



FITTING (405)

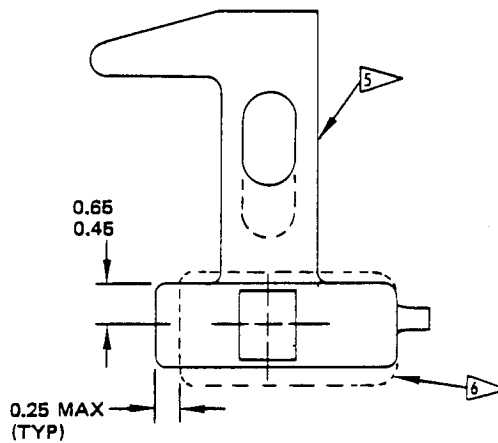


FITTING (420)

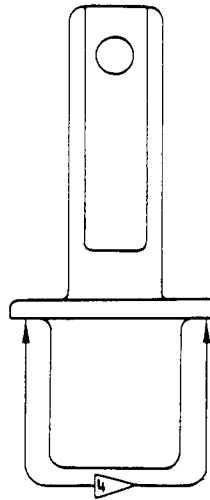


CORROSION REMOVAL REPAIR-FITTINGS  
(395, 400, 405, 410, 415, 420)

## OVERHAUL MANUAL



LOCKHEAD (545)



PLUNGER (535)

ALL DIMENSIONS ARE IN INCHES

1 (2) 0.0008-INCH  
THICK COATS BMS  
10-11 TYPE 1  
PRIMER

2 APPLY SRF-14.905-101 TO  
SURFACES INDICATED

3 APPLY ONE COAT BLACK BMS 10-11, TYPE 2  
ENAMEL, SEMIGLOSS (SRF-14.904-701)

4 APPLY DRY FILM LUBRICANT  
BMS 3-3, TYPE 1

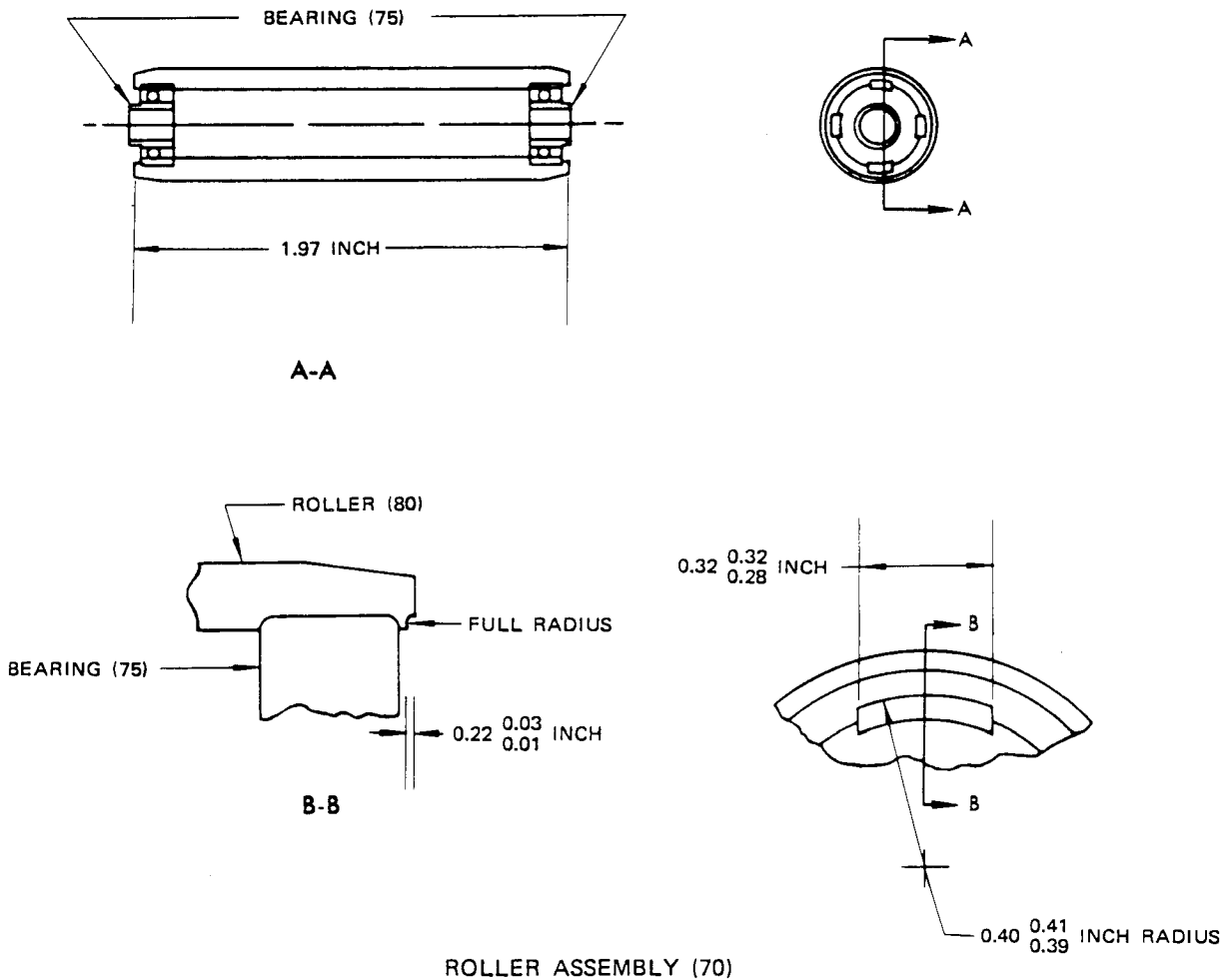
5 APPLY RED EPOXY ENAMEL PER SRF-14.905-101

6 NO PAINT THIS SURFACE. APPLY DRY FILM  
LUBRICANT BMS 3-3, TYPE 1.

OVERHAUL MANUAL

D. Replacement

- (1) Reapply foil markers (5) in accordance with 20-50-05. Apply one coat of clear epoxy enamel over marker and up to 0.25 inch of surrounding area.
- (2) Replace bearings (75) by pressing bearings into roller (80). Overall length of roller assembly (70) shall be in accordance with dimensions indicated in Fig. 3. Stake bearings in accordance with 20-50-03.
- (3) Replace bushings (285, 290, 295, 350) by installing new bushings with wet BMS 10-11, type 1, primer according to 20-50-03. Line machine bushings (285) to 0.3125-0.3165-inch diameter. Line machine bushings (290, 295, 350) to 0.250-0.254-inch diameter.



## OVERHAUL MANUAL

4. ASSEMBLY (Fig. 4)

A. Assemble components using standard industry practices, except as follows:

- (1) Tighten nuts (255 and 315) common to bolts (240 and 305) to 15-25 pound-inches.
- (2) Tighten nuts (65 and 110) common to bolts (50, 55, 100) to 60-85 pound-inches.
- (3) Tighten nuts (65 and 110) common to bolts (85, 90, 95) to 60-85 pound-inches. Torque on these nuts may be reduced as required to ensure that distance between legs of fitting is a minimum of 0.330 inch.

5. FITS AND CLEARANCES (Fig. 4)

A. Tighten nuts as shown in table, Fig. 3A.

FOR TORQUE VALUES OF STANDARD FASTENERS, REFER TO 20-50-01		
Item No. Fig. 4	Name	Torque
		Pound-Inches
65, 110	Nut	60-85
255, 315	Nut	15-25

Torque Table  
Figure 3A

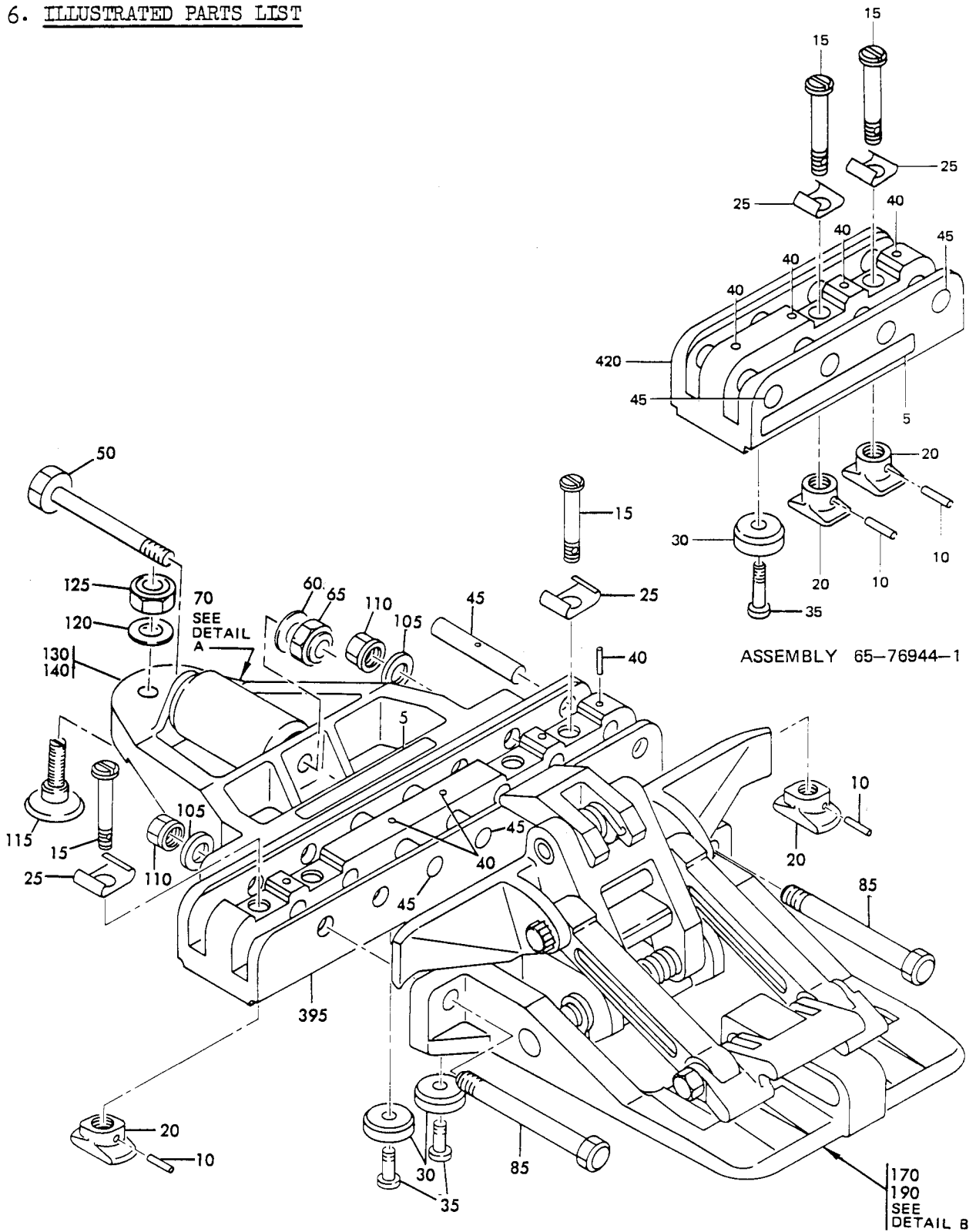
6. TESTING

A. Operational Test

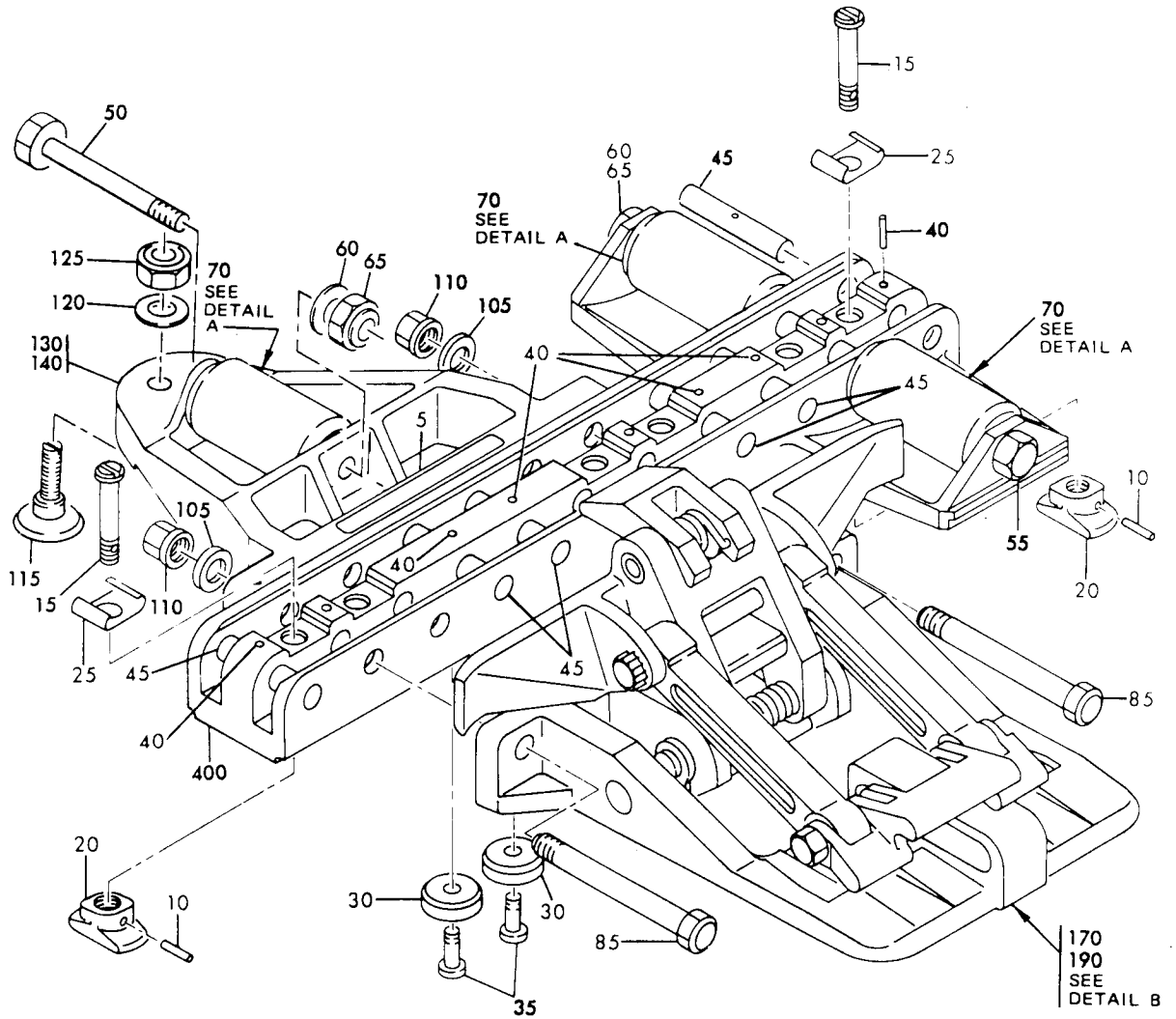
- (1) Erect and retract locking head (545) of stop assy (480) for 5 complete cycles. Check that locking head moves smoothly without binding.

OVERHAUL MANUAL

6. ILLUSTRATED PARTS LIST

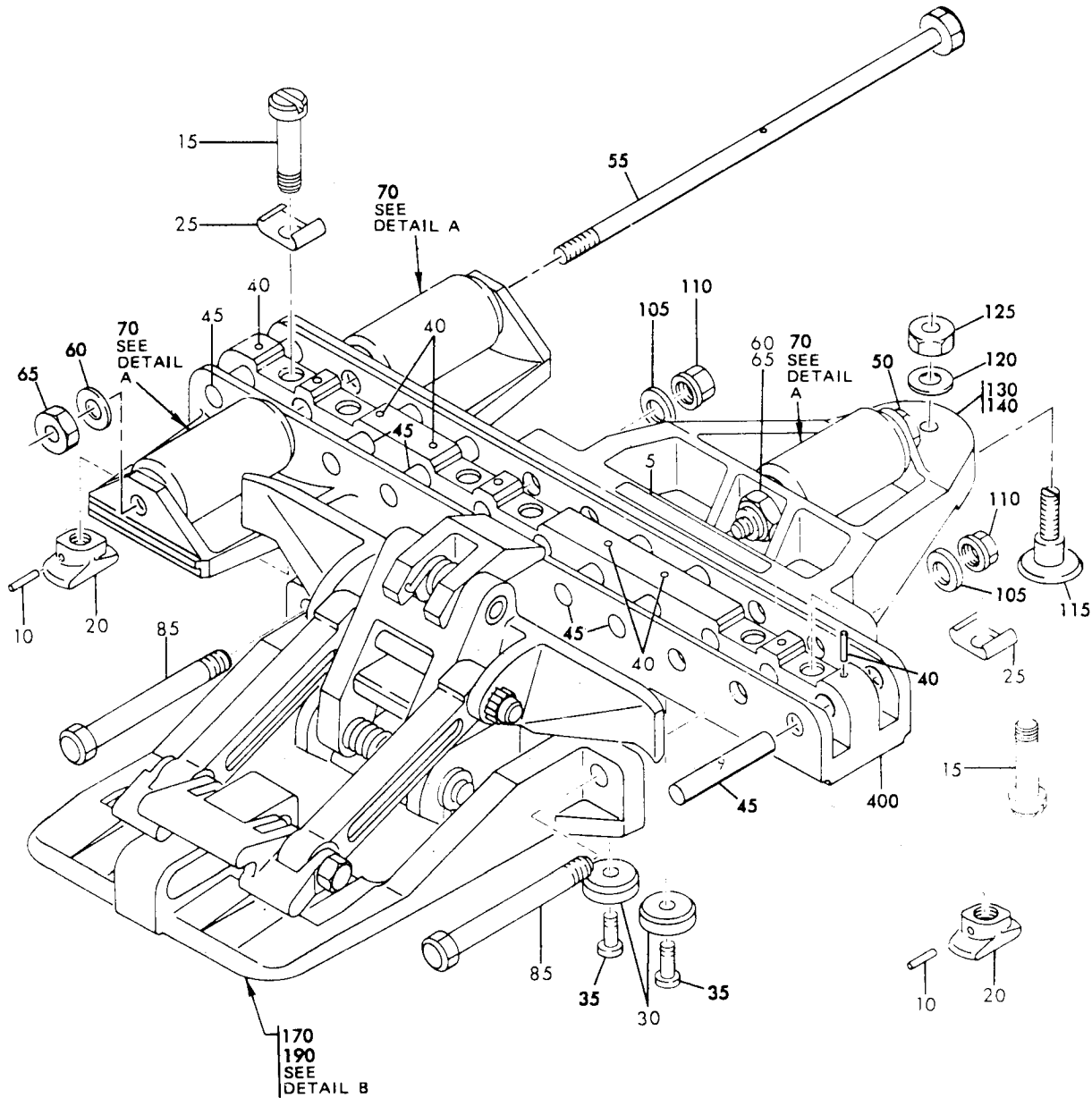


Seat Pallet Attach Fitting Assembly  
Figure 4 (Sheet 1)



ASSEMBLIES 65-76944-3 AND -23

Seat Pallet Attach Fitting Assembly  
Figure 4 (Sheet 2)

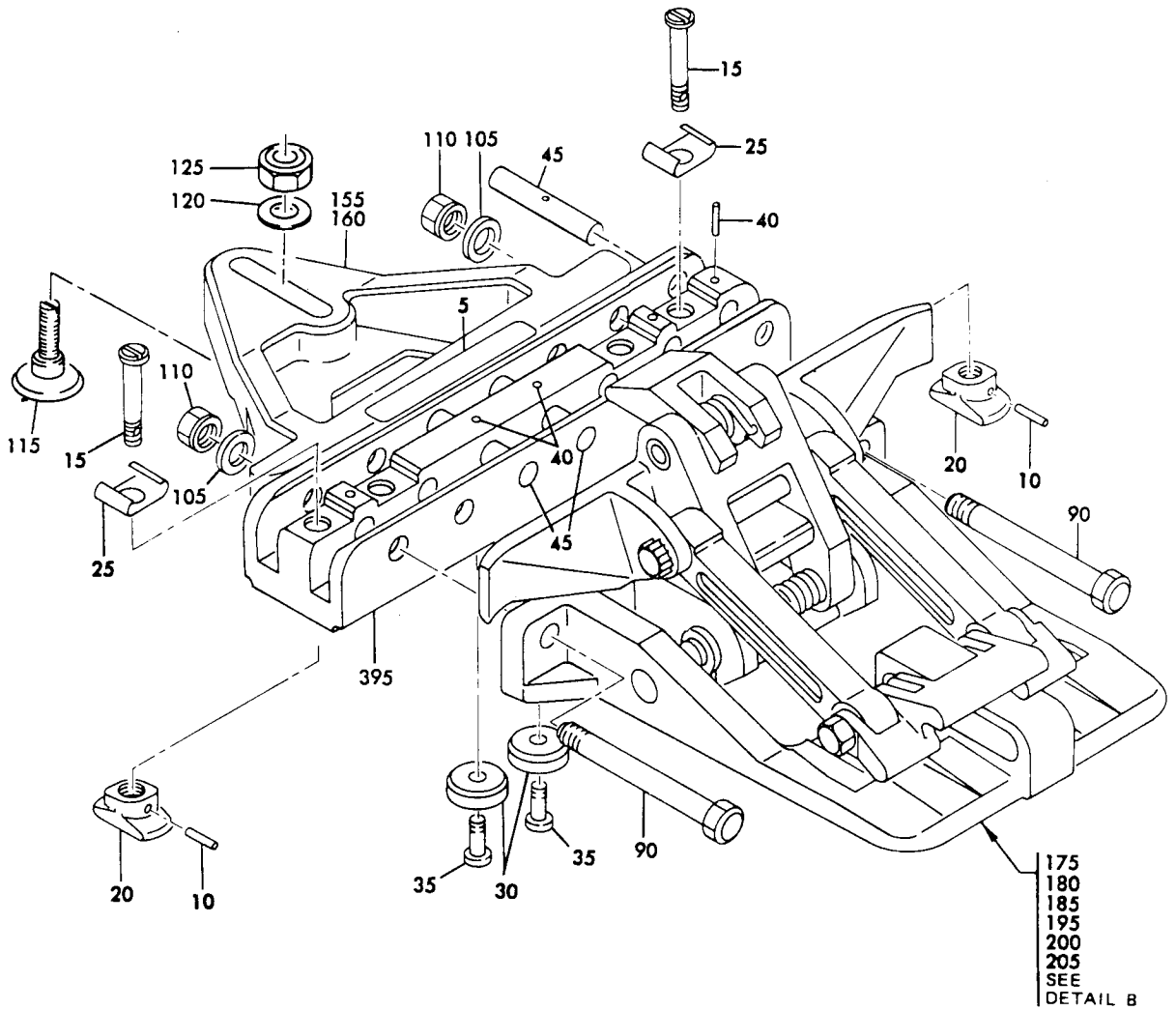


ASSEMBLIES 65-76944-5 AND -25

Seat Pallet Attach Fitting Assembly  
 Figure 4 (Sheet 3)



**BOEING**   
**COMMERCIAL JET**  
**OVERHAUL MANUAL**

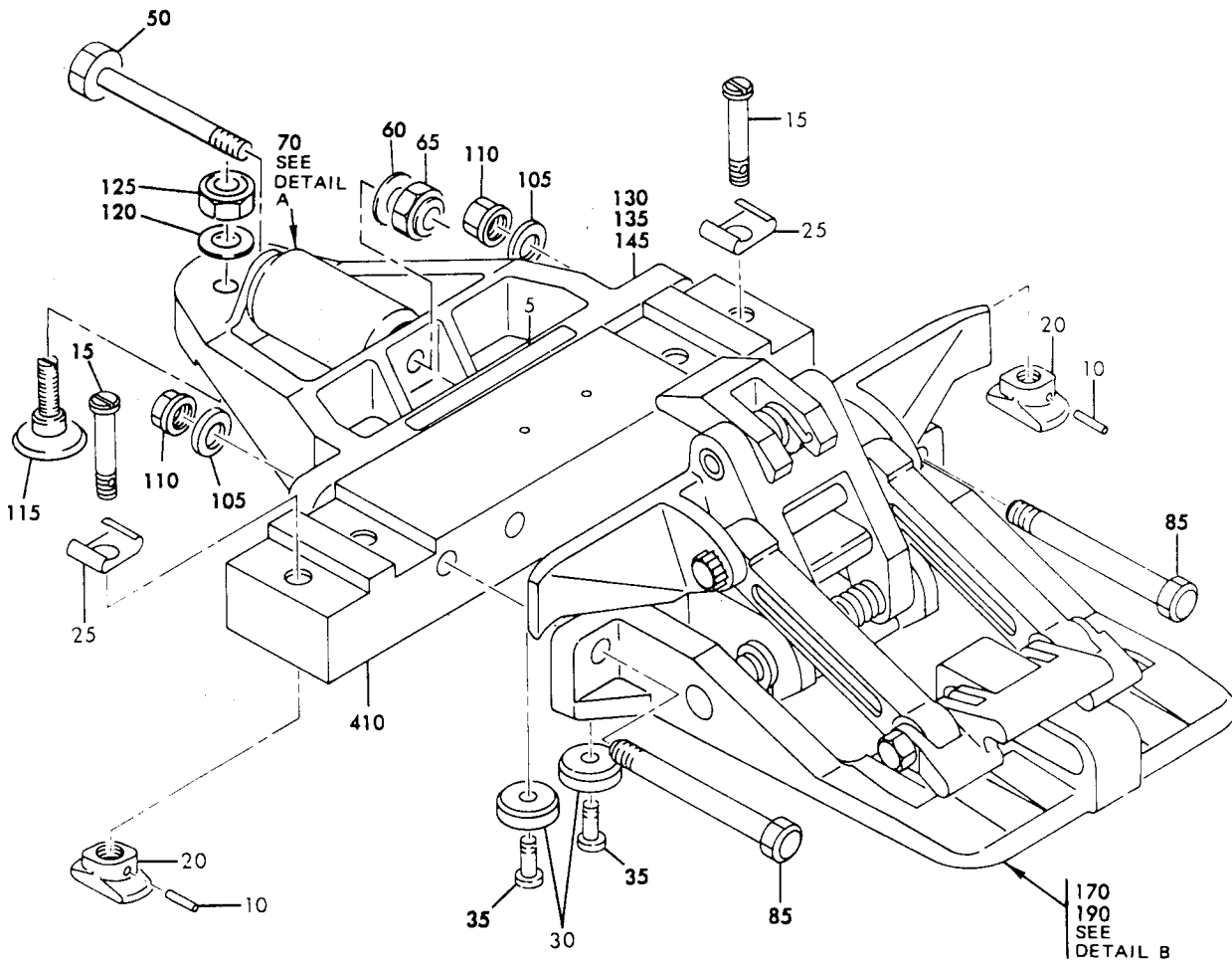


ASSEMBLIES 65-76944-6, -7, -8, -26, -27 AND -28

Mar 10/72

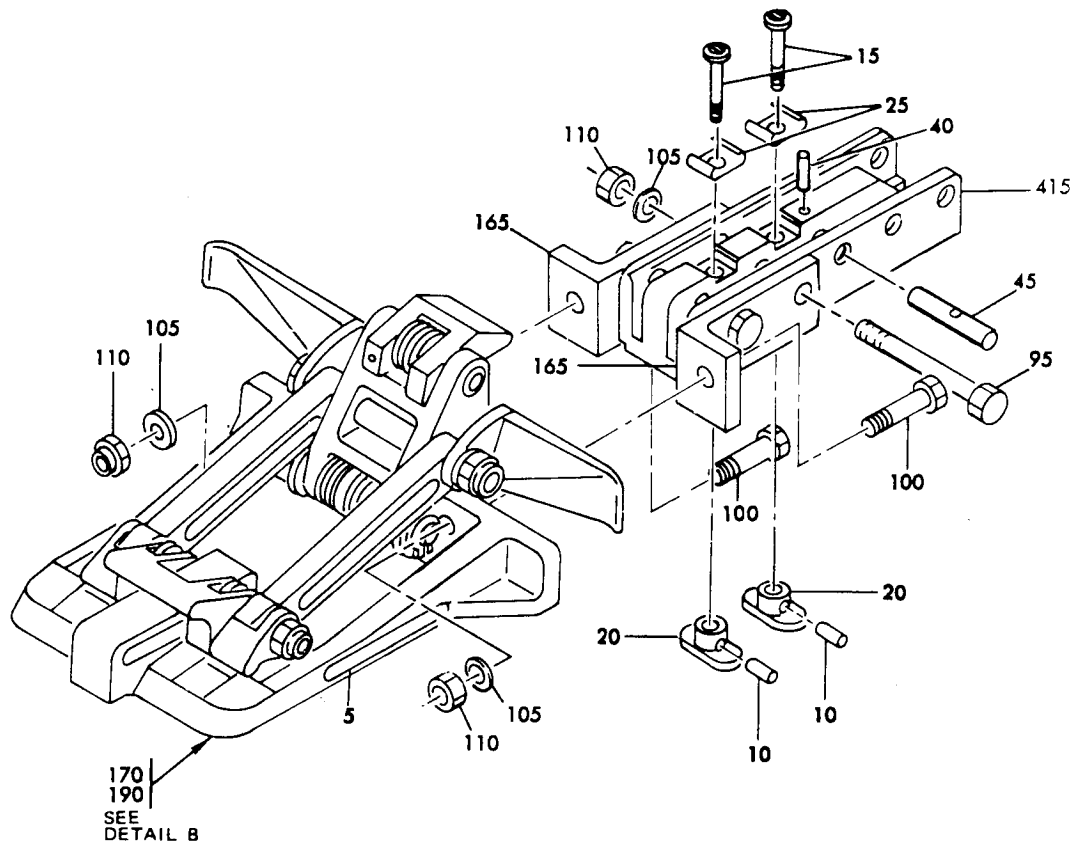
Seat Pallet Attach Fitting Assembly  
Figure 4 (Sheet 4)

25-56-33  
Page 11

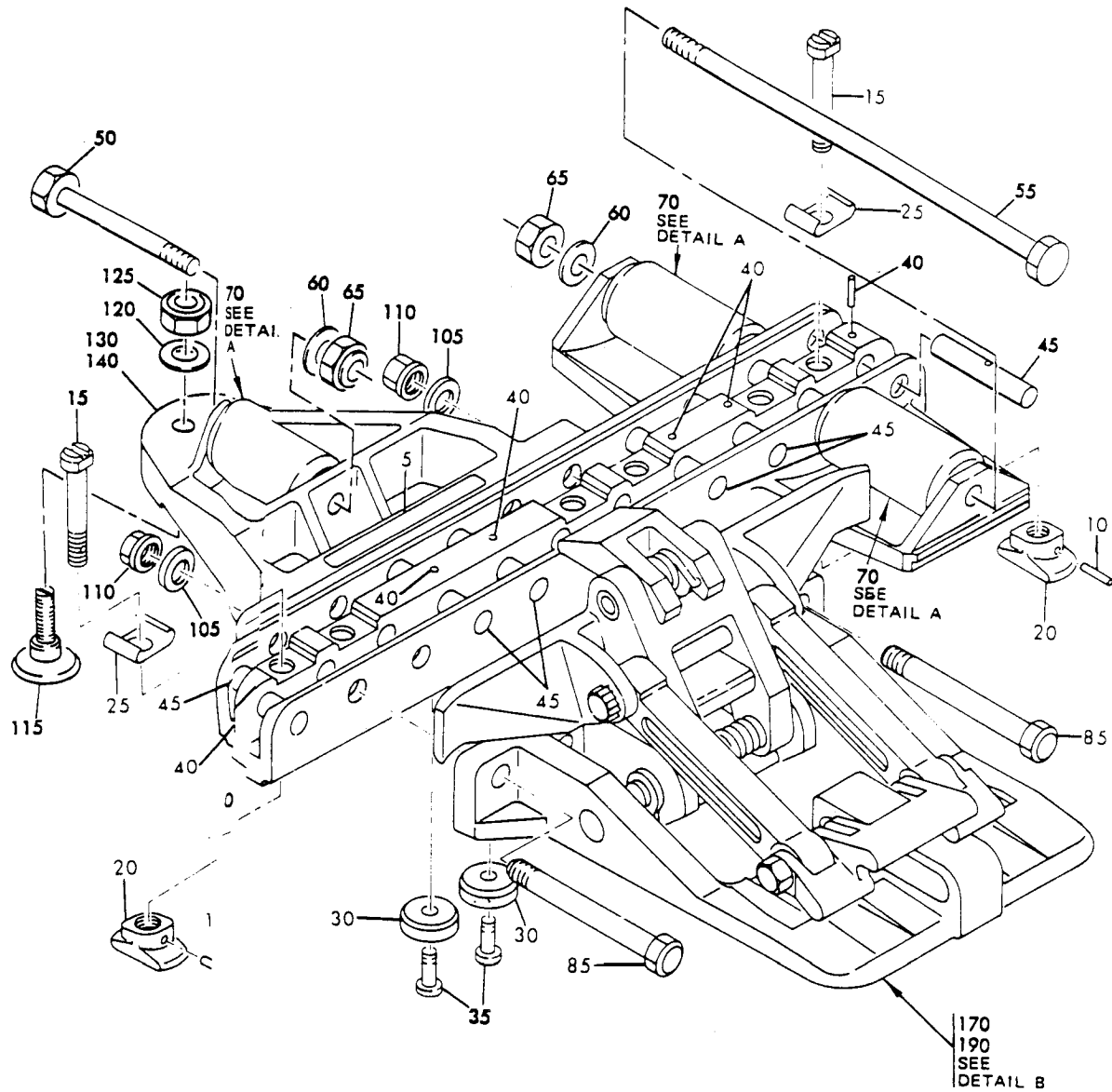


ASSEMBLIES 65-76944-14, -19, AND -39

Seat Pallet Attach Fitting Assembly  
 Figure 4 (Sheet 5)

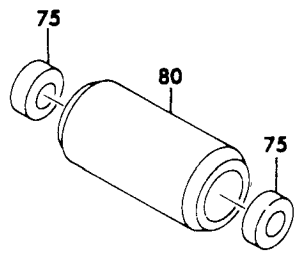
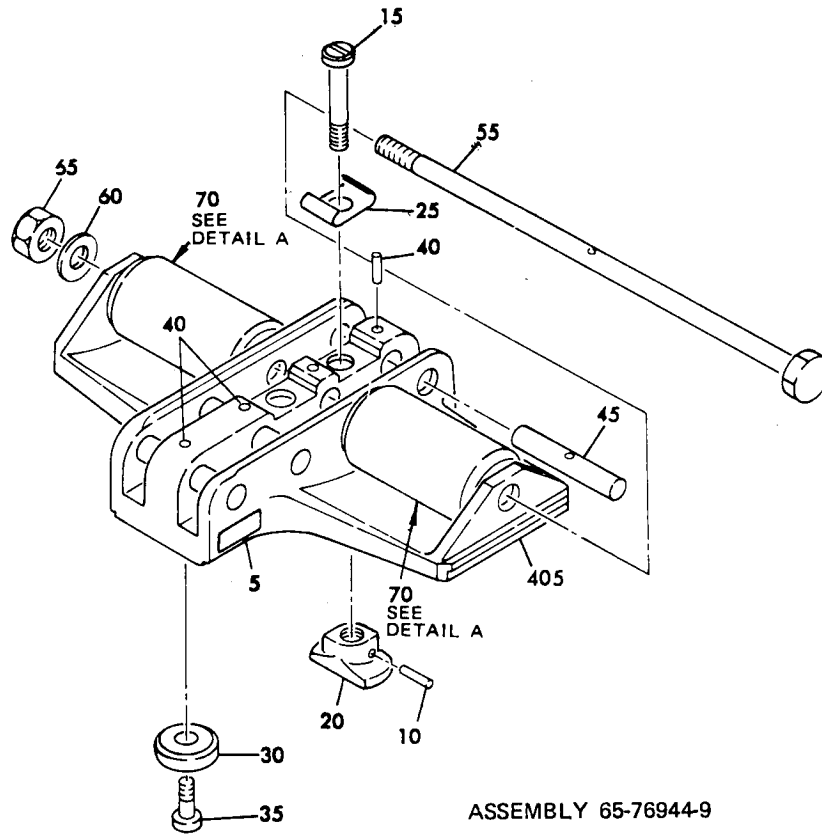


ASSEMBLIES 65-76944-16 AND -36

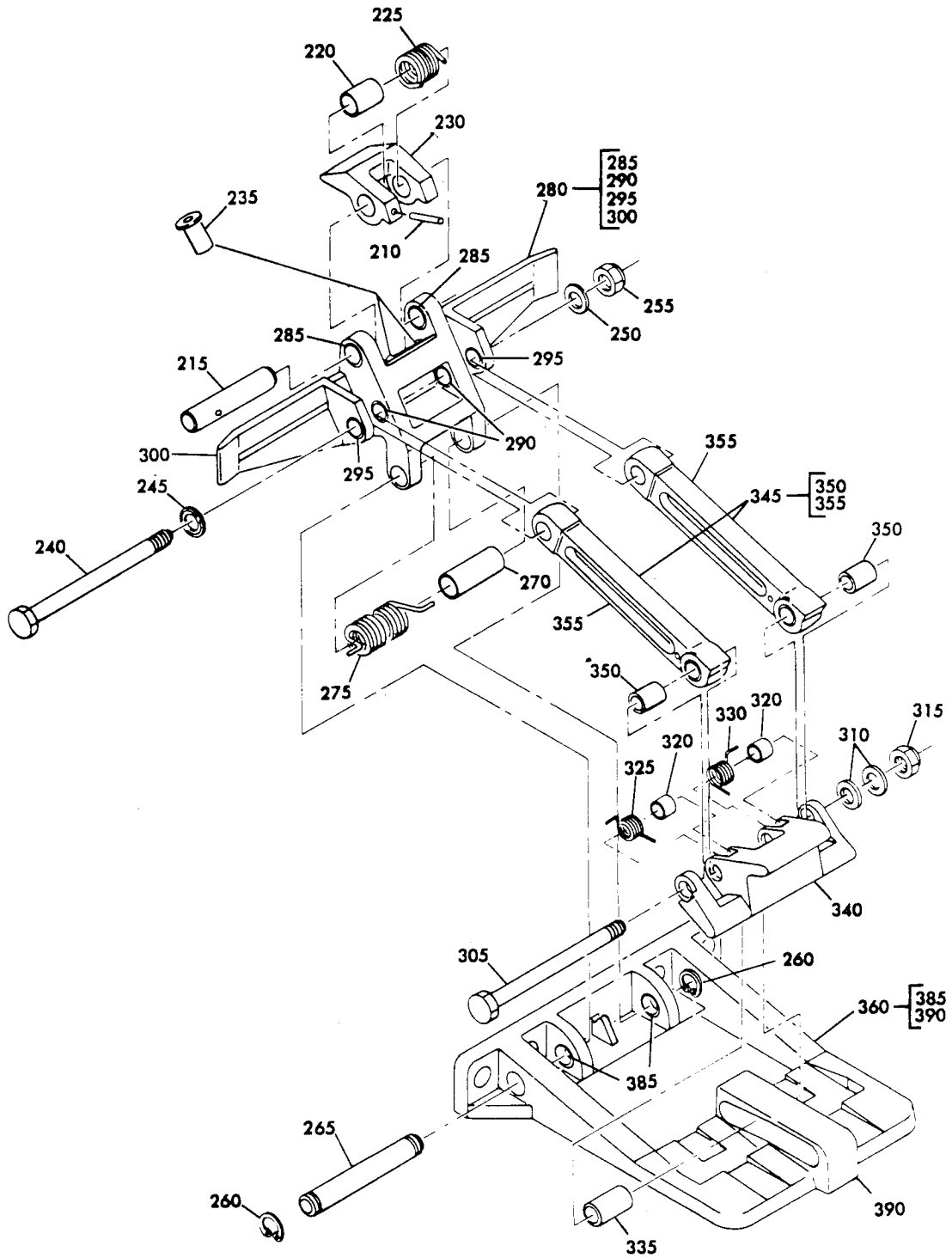


ASSEMBLIES 65-76944-18 AND -38

Seat Pallet Attach Fitting Assembly  
Figure 4 (Sheet 7)



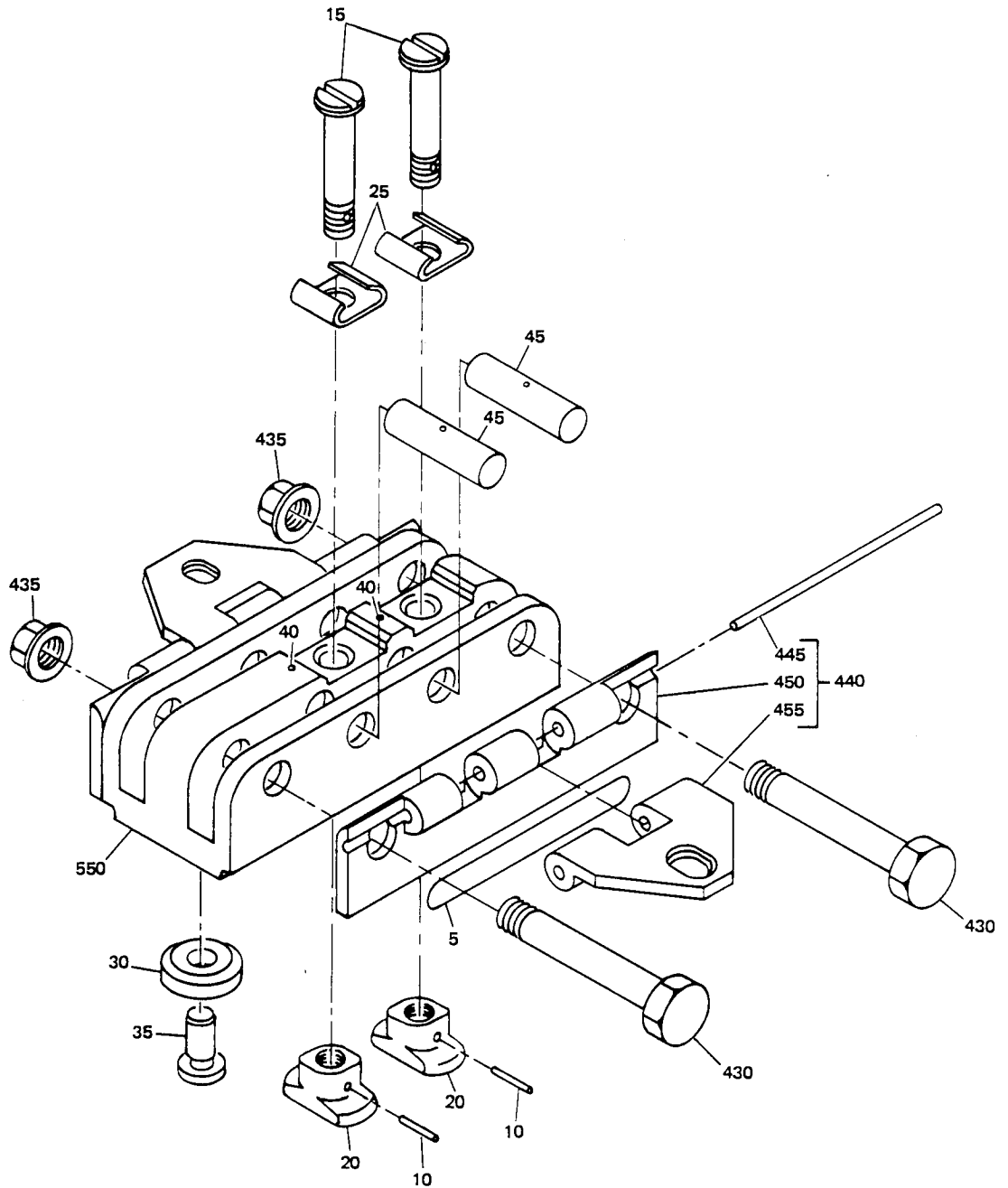
Seat Pallet Attach Fitting Assembly  
Figure 4 (Sheet 8)



DETAIL B

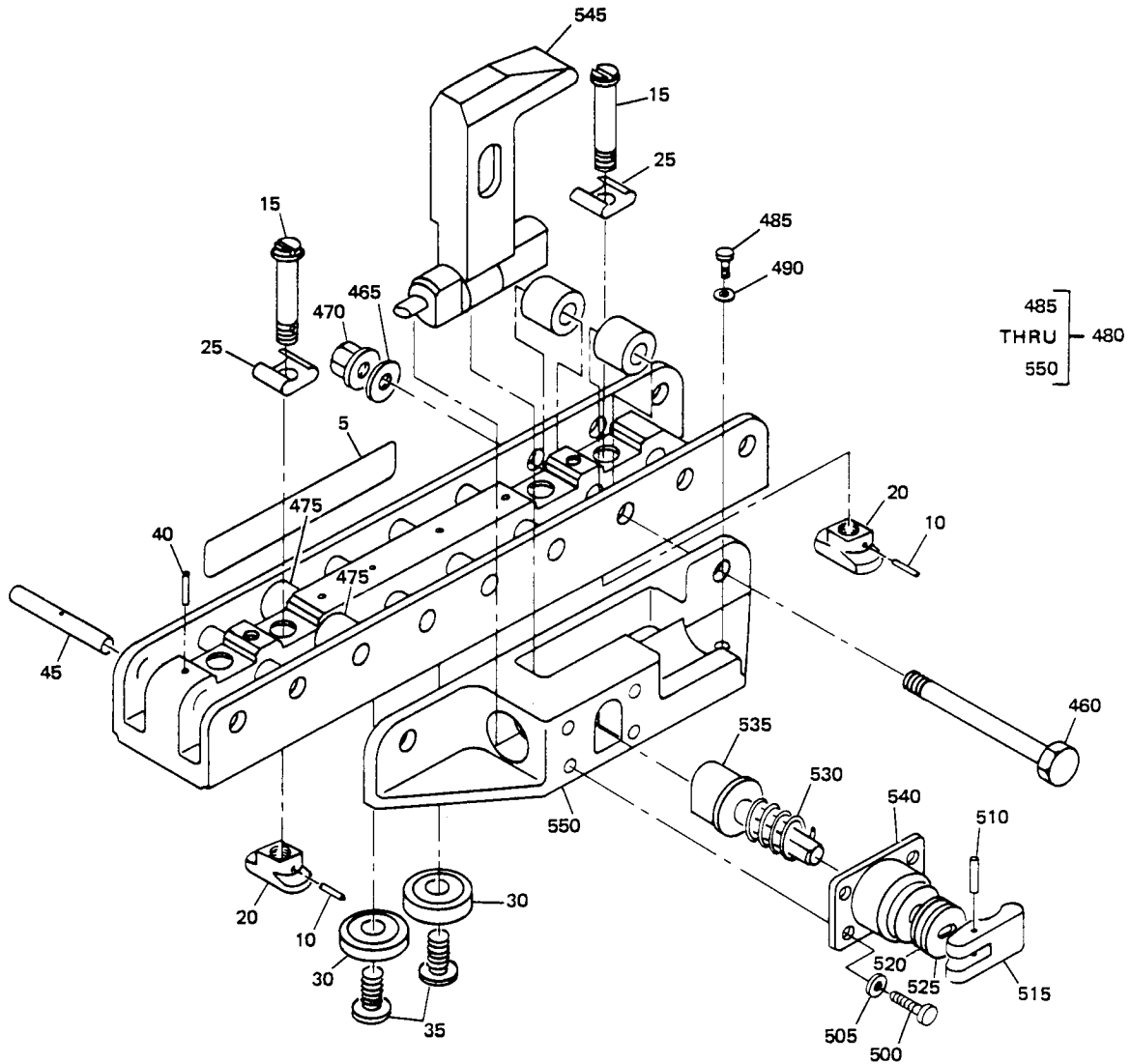
Seat Pallet Attach Fitting Assembly  
Figure 4 (Sheet 9)

OVERHAUL MANUAL



ASSEMBLY 65-76944-10

OVERHAUL MANUAL



ASSEMBLY 65-76944-41



## OVERHAUL MANUAL

FIG. & ITEM NO.	PART NO.	AIRLINE PART NUMBER	N O M E N C L A T U R E							USE CODE	QTY PER ASSY
			1	2	3	4	5	6	7		
4-											
1	65-76944-2		ATTACH	FITTING	ASSY,	SEAT	PALLET			A	RF
1	65-76944-3		ATTACH	FITTING	ASSY,	SEAT	PALLET			B	RF
1	65-76944-5		ATTACH	FITTING	ASSY,	SEAT	PALLET			C	RF
1	65-76944-6		ATTACH	FITTING	ASSY,	SEAT	PALLET			D	RF
1	65-76944-7		ATTACH	FITTING	ASSY,	SEAT	PALLET			E	RF
1	65-76944-8		ATTACH	FITTING	ASSY,	SEAT	PALLET			F	RF
1	65-76944-9		ATTACH	FITTING	ASSY,	SEAT	PALLET			G	RF
1	65-76944-14		ATTACH	FITTING	ASSY,	SEAT	PALLET			H	RF
1	65-76944-16		ATTACH	FITTING	ASSY,	SEAT	PALLET			I	RF
1	65-76944-18		ATTACH	FITTING	ASSY,	SEAT	PALLET			J	RF
1	65-76944-19		ATTACH	FITTING	ASSY,	SEAT	PALLET			K	RF
1	65-76944-22		ATTACH	FITTING	ASSY,	SEAT	PALLET			L	RF
1	65-76944-23		ATTACH	FITTING	ASSY,	SEAT	PALLET			M	RF
1	65-76944-25		ATTACH	FITTING	ASSY,	SEAT	PALLET			N	RF
1	65-76944-26		ATTACH	FITTING	ASSY,	SEAT	PALLET			O	RF
1	65-76944-27		ATTACH	FITTING	ASSY,	SEAT	PALLET			P	RF
1	65-76944-28		ATTACH	FITTING	ASSY,	SEAT	PALLET			Q	RF
1	65-76944-36		ATTACH	FITTING	ASSY,	SEAT	PALLET			R	RF
1	65-76944-38		ATTACH	FITTING	ASSY,	SEAT	PALLET			S	RF
1	65-76944-39		ATTACH	FITTING	ASSY,	SEAT	PALLET			T	RF
1	65-76944-1		ATTACH	FITTING	ASSY,	SEAT	PALLET			U	RF
1	65-76944-4		ATTACH	FITTING	ASSY,	SEAT	PALLET			V	RF
1	65-76944-10		ATTACH	FITTING	ASSY,	SEAT	PALLET			W	RF
1	65-76944-41		ATTACH	FITTING	ASSY,	SEAT	PALLET			X	RF
5	BAC27DCA140		.	MARKER,	FOIL					A	1
5	BAC27DCA141		.	MARKER,	FOIL					B	1
5	BAC27DCA143		.	MARKER,	FOIL					C	1
5	BAC27DCA144		.	MARKER,	FOIL					D	1
5	BAC27DCA145		.	MARKER,	FOIL					E	1
5	BAC27DCA146		.	MARKER,	FOIL					F	1
5	BACM10A48BB		.	MARKER,	FOIL					G	1
5	BAC27DCA175		.	MARKER,	FOIL					H	1
5	BAC27DCA177		.	MARKER,	FOIL					I	1
5	BAC27DCA307		.	MARKER,	FOIL					J	1
5	BAC27DCA311		.	MARKER,	FOIL					K	1
5	BAC27DCA316		.	MARKER,	FOIL					L	1
5	BAC27DCA317		.	MARKER,	FOIL					M	1
5	BAC27DCA318		.	MARKER,	FOIL					N	1
5	BAC27DCA319		.	MARKER,	FOIL					O	1
5	BAC27DCA320		.	MARKER,	FOIL					P	1
5	BAC27DCA321		.	MARKER,	FOIL					Q	1
5	BAC27DCA323		.	MARKER,	FOIL					R	1
5	BAC27DCA324		.	MARKER,	FOIL					S	1

OVERHAUL MANUAL

FIG. & ITEM NO.	PART NO.	AIRLINE PART NUMBER	N O M E N C L A T U R E							USE CODE	QTY PER ASSY			
			1	2	3	4	5	6	7					
4-														
5	BAC27DCA325											. MARKER, FOIL	T	1
5	BAC27DCA139											. MARKER, FOIL	U	1
5	BAC27DCA142											. MARKER, FOIL	V	1
5	BAC27DCA171											. MARKER, FOIL	W	1
5	BAC27DCA363											. MARKER, FOIL	X	1
10	MS16562-4											. PIN	ADEFH KLOPQ TVX	4
10	MS16562-4											. PIN	BCJMN S	6
10	MS16562-4											. PIN	WGIRU	2
15	66-23613-6											. BOLT, TENSION	ADEFH KLOPQ TX	4
15	66-23613-6											. BOLT, TENSION	BCJMN S	6
15	66-23613-6											. BOLT, TENSION	WGIRU	2
15	66-23613-6											. BOLT, TENSION	V	1
20	69-36923-1											. STUD	ADEFH KLOPQ TX	4
20	69-36923-1											. STUD	BCJMN S	6
20	69-36923-1											. STUD	WGIRU	2
20	69-36923-1											. STUD	V	1
25	69-61243-1											. SPRING	ADEFH KLOPQ TX	4
25	69-61243-1											. SPRING	BCJMN S	6
25	69-61243-1											. SPRING	WGIRU	2
25	69-61243-1											. SPRING	V	1
30	66-23607-1											. STUD, SHEAR	XA-FH J-QSTW	2
30	66-23607-1											. STUD, SHEAR	GU	1
35	BACS12BG3-11											. SCREW	A-FH J-QSTX	2
35	BACS12BG3-11											. SCREW	GUW	1
40	MS16562-5											. PIN	ADEFG LOPQ	3
40	MS16562-5											. PIN	BCJMN S	6

## OVERHAUL MANUAL

FIG. & ITEM NO.	PART NO.	AIRLINE PART NUMBER	N O M E N C L A T U R E							USE CODE	QTY PER ASSY
			1	2	3	4	5	6	7		
4-											
40	MS16562-5		.	PIN						IR	1
40	MS16562-5		.	PIN						U	4
40	MS16562-5		.	PIN						W	2
40	MS16562-5		.	PIN						X	5
45	66-23609-1		.	PIN						ADEFG	3
										LOPQ	
45	66-23609-1		.	PIN						BCJMN	6
										S	
45	66-23609-1		.	PIN						IR	1
45	66-23609-1		.	PIN						U	4
45	66-23609-1		.	PIN						W	2
45	66-23609-1		.	PIN						X	5
50	NAS1105-26		.	BOLT						W	2
50	NAS1105-36		.	BOLT						ABCH-	1
										NST	
55	NAS1105-92		.	BOLT						BCGJM	1
										NS	
60	AN960PD516L		.	WASHER						AGHKL	L
										T	
60	AN960PD516L		.	WASHER						BCJMN	2
										S	
65	NAS679A5		.	NUT						AGHKL	1
										T	
65	NAS679A5		.	NUT						BCJMN	2
										S	
70	69-36905-2		.	ROLLER ASSY						AHKL	1
70	69-36905-2		.	ROLLER ASSY						BCJMN	3
										S	
70	69-36905-2		.	ROLLER ASSY						G	2
75	594		.	. BEARING, V73134							2
80	69-36904-2		.	. ROLLER							1
85	NAS1305-34		.	BOLT						ABCH	4
										J-NST	
90	NAS1305-36		.	BOLT						DEFOP	4
										Q	
95	NAS1305-32		.	BOLT						IR	2
100	NAS1305-8		.	BOLT						IR	2
105	69-36921-1		.	WASHER						A-F	4
										H-T	
110	MS21042-5		.	NUT						A-F	4
										H-T	
115	69-29645-5		.	STUD, TENSION						A-FH	1
										J-QST	
120	AN960C516L		.	WASHER						A-FH	1
										J-QST	
125	NAS679A5		.	NUT						A-FH	1
										J-QST	

OVERHAUL MANUAL

FIG. & ITEM NO.	PART NO.	AIRLINE PART NUMBER	N O M E N C L A T U R E							USE CODE	QTY PER ASSY
			1	2	3	4	5	6	7		
4-											
130	65-49138-1		.	B	R	A	C	K		ABCHJ	1
135	65-49138-3		.	B	R	A	C	K		K	1
140	65-49138-4		.	B	R	A	C	K		LMNS	1
145	65-49138-6		.	B	R	A	C	K		T	1
155	65-49139-3		.	B	R	A	C	K		DEF	1
160	65-49139-7		.	B	R	A	C	K		OPQ	1
165	69-55186-1		.	A	N	G	L	E		IR	2
170	65-49132-5		.	G	U	I	D	E	A	SS	1
			.	G	U	I	D	E	A	SS	1
175	65-49132-6		.	G	U	I	D	E	A	SS	1
180	65-49132-7		.	G	U	I	D	E	A	SS	1
185	65-49132-9		.	G	U	I	D	E	A	SS	1
190	65-49132-15		.	G	U	I	D	E	A	SS	1
			.	G	U	I	D	E	A	SS	1
195	65-49132-17		.	G	U	I	D	E	A	SS	1
200	65-49132-18		.	G	U	I	D	E	A	SS	1
205	65-49132-19		.	G	U	I	D	E	A	SS	1
210	MS171439		.	.	P	I	N	,	S	P	1
215	66-23624-1		.	.	P	I	N				1
220	NAS43DD5-33		.	.	S	P	A	C	E	R	1
225	69-39381-1		.	.	S	P	R	I	N	G	1
230	65-51710-3		.	.	L	I	P				1
235	VQ147		.	.	B	A	L	L	U	N	1
240	BACB30EK4-47		.	.	B	O	L	T			2
245	MS20002C4		.	.	W	A	S	H	E	R	1
250	AN960PD416L		.	.	W	A	S	H	E	R	1
255	BACM10D4		.	.	N	U	T				1
260	MS16624-4031		.	.	R	I	N	G			2
265	66-24353-1		.	.	P	I	N				1
270	NAS43DD5-75		.	.	S	P	A	C	E	R	1
275	69-39380-1		.	.	S	P	R	I	N	G	1
280	69-38414-3		.	.	R	A	I	L	A	S	1
285	NAS537B4P028		.	.	.	B	U	S	H	I	2
290	NAS537B3P028		.	.	.	B	U	S	H	I	2
295	NAS537B3P014		.	.	.	B	U	S	H	I	2
300	69-38414-4		.	.	.	R	A	I	L		1
305	NAS1104-50		.	.	B	O	L	T			1
310	NAS620A416		.	.	W	A	S	H	E	R	2
315	MS21042-4		.	.	N	U	T				1
320	NAS43DD4-13		.	.	S	P	A	C	E	R	2
325	69-39382-1		.	.	S	P	R	I	N	G	1
330	69-39382-2		.	.	S	P	R	I	N	G	1
335	66-24358-1		.	.	B	E	A	R	I	N	1
340	65-49135-1		.	.	T	R	I	G	G	E	1

## OVERHAUL MANUAL

FIG. & ITEM NO.	PART NO.	AIRLINE PART NUMBER	N O M E N C L A T U R E							USE CODE	QTY PER ASSY
			1	2	3	4	5	6	7		
4-											
345	69-38407-1		.	.	.	.	.	.	.	.	2
350	NAS537B3-040		.	.	.	.	.	.	.	.	1
355	69-38407-2		.	.	.	.	.	.	.	.	1
360	65-49142-1		.	.	.	.	.	.	.	ABCH- NRST	1
360	65-49142-2		.	.	.	.	.	.	.	D	1
360	65-49142-3		.	.	.	.	.	.	.	EP	1
360	65-49142-15		.	.	.	.	.	.	.	FQ	1
360	65-49142-4		.	.	.	.	.	.	.	O	1
385	NAS76A4-006P		.	.	.	.	.	.	.	.	2
390	65-49142-5		.	.	.	.	.	.	.	ABC H-NRS T	1
390	65-49142-6		.	.	.	.	.	.	.	D	1
390	65-49142-7		.	.	.	.	.	.	.	EP	1
390	65-49142-8		.	.	.	.	.	.	.	O	1
390	65-49142-14		.	.	.	.	.	.	.	FQ	1
395	65-76943-2		.	.	.	.	.	.	.	ADEFL OPQ	1
400	65-76943-7		.	.	.	.	.	.	.	BCJMN S	1
405	65-76943-8		.	.	.	.	.	.	.	G	1
410	65-76943-5		.	.	.	.	.	.	.	HKT	1
415	65-76943-6		.	.	.	.	.	.	.	IR	1
420	65-76943-1		.	.	.	.	.	.	.	U	1
425	65-76943-4		.	.	.	.	.	.	.	V	1
430	NAS1105-26		.	.	.	.	.	.	.	W	2
435	MS21042-5		.	.	.	.	.	.	.	W	2
440	66-23618-1		.	.	.	.	.	.	.	W	2
445	MS20253P2-220		.	.	.	.	.	.	.	W	1
450	69-36903-1		.	.	.	.	.	.	.	W	1
455	69-36903-2		.	.	.	.	.	.	.	W	1
460	BACB30NF5-28		.	.	.	.	.	.	.	X	2
465	AN960PD516L		.	.	.	.	.	.	.	X	2
470	BACN10JC5		.	.	.	.	.	.	.	X	2
475	NAS43DD5-21		.	.	.	.	.	.	.	X	4
480	65-76669-1		.	.	.	.	.	.	.	X	1
485	MS21295-3		.	.	.	.	.	.	.	X	1
490	NAS620AB		.	.	.	.	.	.	.	X	1
495	69-39375-1		.	.	.	.	.	.	.	X	1
500	MS21295-6		.	.	.	.	.	.	.	X	4

OVERHAUL MANUAL

FIG. & ITEM NO.	PART NO.	AIRLINE PART NUMBER	N O M E N C L A T U R E							USE CODE	QTY PER ASSY
			1	2	3	4	5	6	7		
4-505	NAS620A8		.	.	W	A	S	H	E	X	4
			-----*								
520	AN960PD516L		.	.	.	W	A	S	H	X	AR
510	NS16562-24		.	.	.	P	I	N		X	1
515	69-38408-1		.	.	.	H	A	N	D	X	1
525	66-23616-1		.	.	.	W	A	S	H	X	1
530	MS24585C285		.	.	.	S	P	R	I	X	1
535	69-38404-1		.	.	.	P	L	U	N	X	1
540	69-38405-1		.	.	.	H	O	U	S	X	1
545	65-51709-4		.	.	L	O	C	K	H	X	1
550	65-75999-1		.	.	S	T	O	P		X	1
555	65-76943-1		.	F	I	T	T	I	N	W	RF
560	65-76943-10		.	F	I	T	T	I	N	X	RF

VENDORS

V01226 VLIER ENGINEERING CORP., 2333 VALLEY ST, BURBANK, CALIFORNIA 91505

V73134 THE HEIM UNIVERSAL CORP., 60 ROUND HILL ROAD, FAIRFIELD, CONNECTICUT 06430