



OVERHAUL MANUAL

TO: ALL HOLDERS OF CARGO PALLET LOCK ASSEMBLY OVERHAUL MANUAL, 25-57-05

REVISION NO. 3, DATED DEC 5/84

HIGHLIGHTS

DESCRIPTION OF CHANGE	TOPICS AFFECTED												
	D & O	D / Assy	Cleaning	Insp / Chk	Repair	Assy	F / C	Test	T / Shooting	S / Tools	Storage	HP L	L / Overhaul
Changed finish of lock head (16) and added flagnote 7 and 8 in Fig. 401 to incorporate latest engineering changes.					X								

BOEING 
COMMERCIAL JET
OVERHAUL MANUAL

CARGO PALLET LOCK ASSEMBLY

25-57-05

I BOEING P/N 65-49115-1 thru -13, -15 thru -38
65-81432-15, -16

AIRLINE P/N

THE FOLLOWING DIRECTIVES APPLY TO THIS SUBJECT:

BOEING SERVICE BULLETIN	BOEING TEMPORARY REVISION	OTHER DIRECTIVES	DATE DIRECTIVE INCORPORATED INTO TEXT
25-172 (727) 25-172 R1 (727) 3080(707)		PRR 57563 PRR 23279 MC 1902-1R	Aug 15/68 Mar 10/70 May 10/72 May 10/72 Aug 10/74

OVERHAUL MANUAL

LIST OF EFFECTIVE PAGES					
* Indicates pages revised, added or deleted in latest revision					
F Indicates foldout pages - print one side only					
PAGE	DATE	PAGE	DATE	PAGE	DATE
25-57-05					
T-1	Jul 5/77				
T-2	BLANK				
* LEP-1	Dec 5/84				
LEP-2	BLANK				
T/C-1	Aug 10/74				
T/C-2	BLANK				
1	Aug 10/74				
2	BLANK				
101	Aug 10/74				
102	BLANK				
301	May 10/72				
302	BLANK				
401	Dec 25/75				
* 402	Dec 5/84				
* 403	Dec 5/84				
404	Aug 10/74				
501	Nov 10/82				
502	BLANK				
1101	Jul 5/77				
1102	Jul 5/77				
1103	Jul 5/77				
1104	Jul 5/77				
1105	Nov 10/82				
1106	Nov 10/82				
1107	Nov 10/82				
1108	Nov 10/82				
1108A	Nov 10/82				
1108B	Nov 10/82				
1109	BLANK				
1110	Aug 10/74				
1111	Nov 10/82				
1112	Nov 10/82				

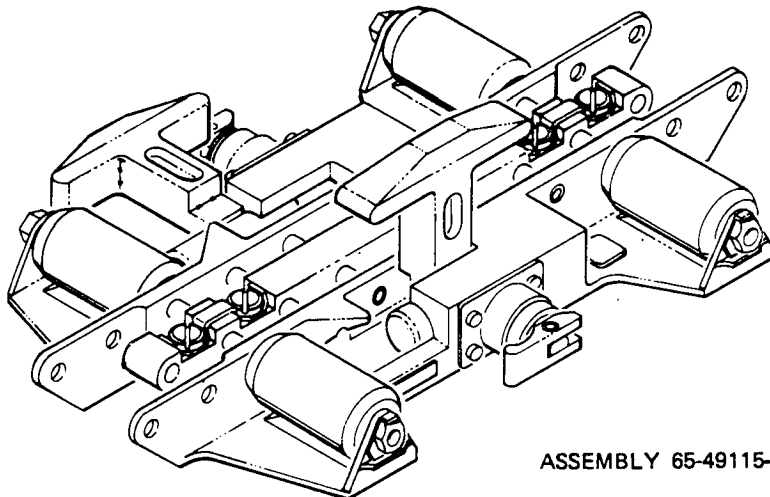
BOEING 
COMMERCIAL JET
OVERHAUL MANUAL

TABLE OF CONTENTS

<u>Paragraph Title</u>	<u>Page</u>
Description and Operation	1
Disassembly	101
Cleaning*[1]	
Inspection/Check	301
Repair	401
Assembly	501
Fits and Clearances (not applicable)	
Testing*[1]	
Trouble Shooting*[1]	
Storage Instructions*[1]	
Special Tools, Fixtures, and Equipment (not applicable)	
Illustrated Parts List	1101
*[1] Special instructions not required. Use standard industry practices.	

BOEING 
COMMERCIAL JET
OVERHAUL MANUAL

CARGO PALLET LOCK ASSEMBLY



ASSEMBLY 65-49115-1 SHOWN

Cargo Pallet Lock Assembly
Figure 1

DESCRIPTION AND OPERATION

1. Description

- A. The cargo pallet lock assembly consists of a roller assembly and two shear plunger assemblies. The pallet lock assembly is used to secure pallets in the airplane. When the cargo pallet lock assembly is installed, actuation of the lock heads to the erect position prevents fore and aft pallet movement. In the erect position, a spring-loaded plunger fits into a detent on the lower side of each lock head to provide for pallet restraint. A handle is lifted on each side of the unit to retract the lock heads, and to remove the spring-loaded plunger from the detents. In the retract position, cargo pallets contact only the roller assemblies during fore and aft movement.

2. Leading Particulars

Width -- 6 inches
Length -- 10 inches
Height -- 1 inch (retracted)
Weight -- (approx) 6 lb

BOEING 
COMMERCIAL JET
OVERHAUL MANUAL

65-49115
65-81432
DASH NUMBERS LIMITED

DISASSEMBLY

1. Remove cotter pin (1, Fig. 1101), nuts (2), washers (3 and 4), bolts (5), retainers (6) and roller assemblies (7).

NOTE: Do not remove bearings (8) from roller (9) unless replacement is necessary.

2. Remove roll pins (10), studs (11), tension springs (12 or 12A), as applicable, and bolts (13).
3. Remove two screws (14) and spacers (15).
4. Pull handles (19) on left and right shear plunger assemblies (17) to release lock heads (16). Slide lock heads (16) forward to remove from base (31).
5. Remove four screws (14) to free shear plunger assemblies (17) from base (31).
6. Remove pins (18), handles (19), washers (20 and 21), housings (22), springs (23), and plungers (24) from shear plunger assemblies (17).
7. Remove screws (25) and studs (26) from base (31).

NOTE: Do not remove pins (27 and 28), foil markers (29 and 30) or shim (32) unless necessary for repair or replacement.

BOEING 
COMMERCIAL JET
OVERHAUL MANUAL

INSPECTION/CHECK

1. Perform the following visual checks: (See figure 1101.)
 - A. All parts for cracks, burrs, and corrosion under strong light and 10-power magnification.
 - B. All threaded parts for cross-threading and stripping.
 - C. All plated or painted surfaces for blisters, flaking and continuity of coating.
 - D. Foil markers (29 and 30) for legibility and security or mounting.
2. Check spring (23) for roundness by rolling on flat surface; there must be no wobble. Check spring (23) for free length of 0.69 inch and test deflection of 0.341 to 0.417 inch at a required load of 4.17 to 6.23 pounds.
3. With spring (12, P/N 69-36908-1) mounted on flat surface, check spring for outward deflection of 0.04 inch without taking permanent set at a required load limit of 2.00 to 4.00 pounds.
4. With spring (12A, P/N 69-38412-5) mounted on flat surface, check spring for outward deflection of 0.04 inch without taking permanent set after initial deflection of 0.02 to 0.03 inch.
5. Check bearings (8) for excessive radial or axial play.
6. If visual examination reveals evidence of defects in any of following parts, perform a magnetic particle check on the questionable part:
 - A. Studs (11 and 26)
 - B. Bolt (13)
 - C. Lock Head (16)
 - D. Pins (27 and 28)
 - E. Base (31)

REPAIR

1. Materials

NOTE: Use listed material or equivalent substitutes.

- A. Topcoat -- A423 (Ref 20-60-02)
- B. Adhesive -- Type 38 (Ref 20-50-12)

2. Refinish (Fig. 1101)

NOTE: Refer to 20-30-02 for stripping of protective finishes and to 20-41-01 for explanation of F and SRF finish codes.

- A. Retainers (6) -- Apply Alodine 1200 or chromic acid anodize plus one coat BMS 10-11, type 1 primer (SRF-2.30) all over. Material: Al Alloy.
- B. Rollers (9), handle (19) -- Apply chromic acid anodize (F-2.20) all over. Material: Al Alloy.
- C. Studs (11) -- Apply cadmium-titanium plate (F-1.181) all over. Material: Steel, 18-9-5 MAS, 280-285 ksi.

NOTE: 65-49115-20 thru -36 -- Apply two coats of BMS 10-11, type 1 primer over cadmium plating.

D. Springs (12 or 12A)

- (1) 69-36908-1 -- Apply cadmium plate with post-plate chromate treatment (F-4.201) all over. Material: Beryllium Copper, 160-180 ksi.
- (2) 69-61243-1 -- Nickle plate per MIL-C-26074A, class 2, 0.0005-0.0010 inch thick. Material: Spring Steel, SAE 1095.
- (3) 69-38412-5 -- Cadmium plate and apply one coat of primer BMS 10-11, type 1 (SRF-1.92) all over. Material: Spring Steel, SAE 1095.

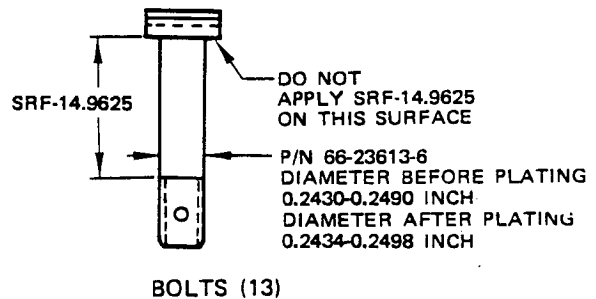
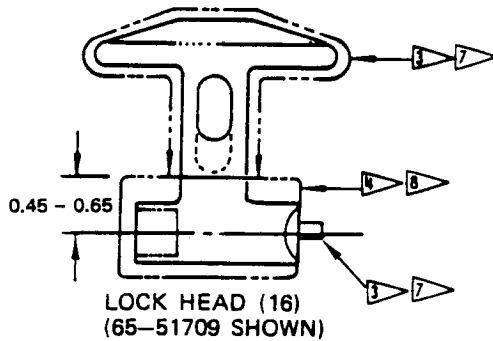
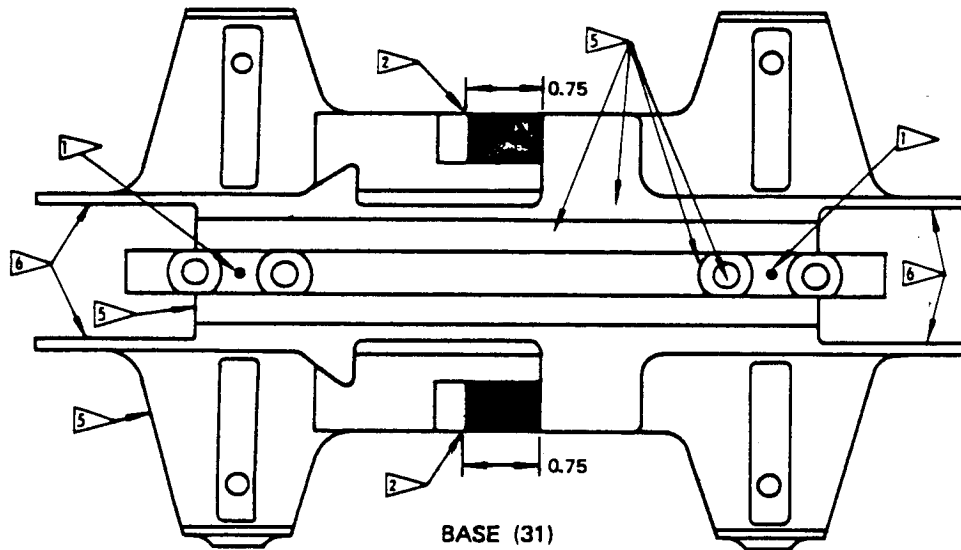
- E. Bolts (13) -- 66-23613-1, passivate (F-8.07) and apply cadmium plate all over per 20-42-05 to a thickness of 0.0002 to 0.0003 inch. Apply one coat BMS 10-11, type 2 gloss enamel (SRF-14.905-101) red epoxy enamel in screwdriver slot. 66-23613-5, passivate (F-8.07) and apply cadmium plate (F-14.16) all over plus apply abrasive-resistant finish (SRF-14.9625) to surfaces indicated in Fig. 401. 66-23613-6, passivate (F-8.07) and apply cadmium plate (F-14.16) all over, plus apply two 0.0008-inch thick coats of BMS 10-11, type 1 primer (maximum 0.0016) to indicated surfaces. Diameter after applying primer to be 0.260/0.247 inch. Material: CRES 17-4PH, 180-200 ksi.

NOTE: SRF-14.9625 optional to BMS 10-11, type 1 primer.

OVERHAUL MANUAL

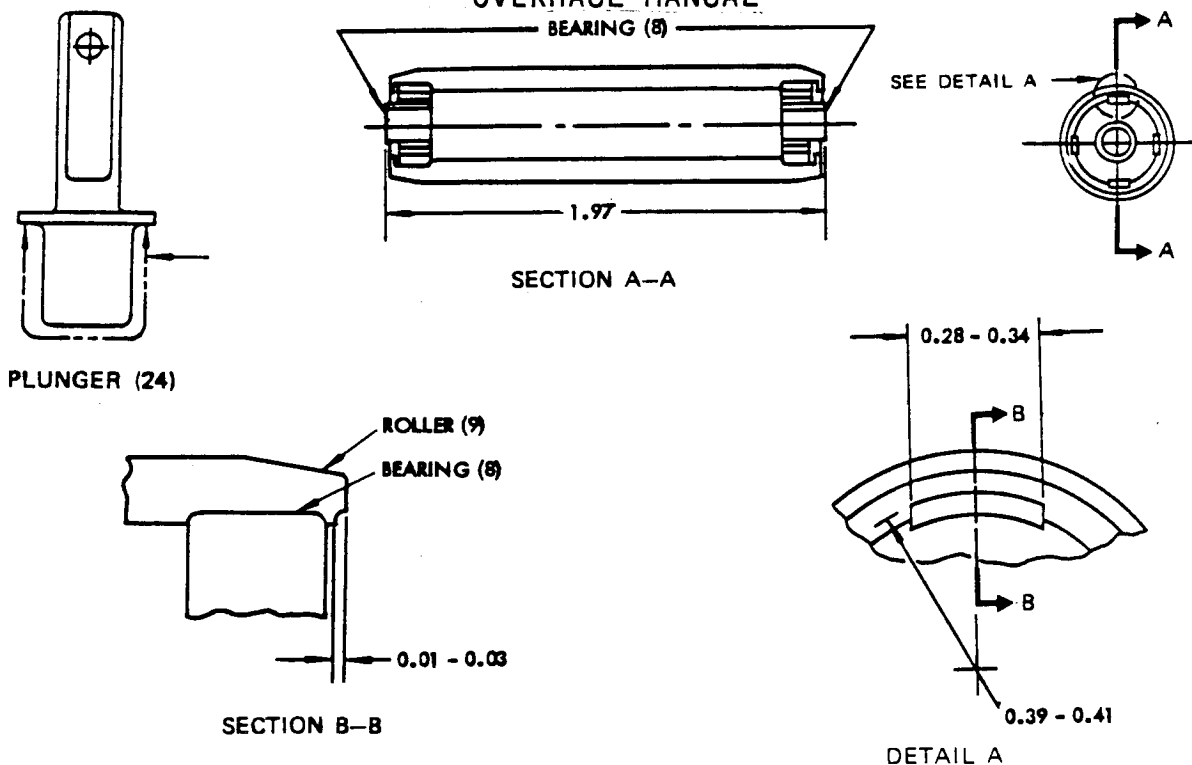
- F. Lock heads (16) -- Apply finishes as indicated in Fig. 401.
 Material: CRES 17-4PH, 180-200 ksi.
- G. Plunger (24) -- Apply two coats primer BMS 10-11, type 1 (SRF-8.51) on bottom. Optional all over. Material: CRES 17-4PH, 180-220 ksi.
- H. Studs (26) -- Apply cadmium plate (F-1.1923) all over. Material: Steel, AMS 4140, 160-180 ksi.
- I. Pins (27 and 28) -- Passivate (F-8.07) all over. Material: CRES 17-4PH, 180-200 ksi.
- J. Base (31) -- Apply finishes as indicated in Fig. 401. Material: CRES 17-4PH, 180-200 ksi.

NOTE: If desired, for 65-49115-1 thru -13, and -15 thru -19; 65-81432-15, -16 -- Apply two coats BMS 10-11, type 1 primer plus abrasion-resistant finish (SRF-14.9625) per 20-44-01 to lower surface only, in order to improve protection of seat tracks against corrosion.



Repair and Refinish Diagram
 Figure 401 (Sheet 1)

OVERHAUL MANUAL



ALL DIMENSIONS ARE IN INCHES

- 1 APPLY ONE COAT BMS 10-11, TYPE 1 PRIMER (SRF-12.205) FOLLOWED BY ONE COAT BMS 10-11, TYPE 2, EPOXY ENAMEL (SRF-14.904) IN HOLE.
- 2 APPLY BMS 10-11, TYPE II UNTHINNED ENAMEL, COLOR BAC 701 BLACK.
- 3 65-51711-1, -2, -5, -6; 69-36911-1, -2, -5, -6 - APPLY ONE COAT BMS 10-11, TYPE 2, (SRF-14.905.101) RED EPOXY ENAMEL.
- 4 NO PRIMER OR ENAMEL ON THIS SURFACE. APPLY BMS 3-8, CLASS A, METHOD 3, DRY FILM LUBRICANT PER 20-50-08 OR OPTIONAL WEBER AIRCRAFT SPECIFICATION WPC-303.
- 5 65-49115-20 THRU -36 - APPLY ABRASION-RESISTANT FINISH (SRF-14.9624) OR EQUIVALENT TO ENTIRE LOWER SURFACE INCLUDING SHEAR STUDS AND BOLT HEADS AND EXTENDING UP ALL VERTICAL SURFACES. THICKNESS 0.10 TO 0.15 INCH.
- 6 65-49115-20 THRU -36 - APPLY TWO COATS BMS 10-11, TYPE I PRIMER PLUS TOP COAT OF ABRASION-RESISTANT FINISH (SRF-14.9624) OR EQUIVALENT.
- 7 65-51709-1 THRU -6, -9 THRU -14; 69-50902-1, -2, -3, -4 - PASSIVATE (F-17.09) ALL OVER. APPLY ONE COAT BMS 10-11, TYPE 1 PRIMER (F-20.01) FOLLOWED BY ONE COAT BMS 10-11, TYPE 2 RED EPOXY GLOSS ENAMEL (SRF-14.905-101) (COLOR CHIP MATCHING NOT REQUIRED)
- 8 69-50902-1, -2, -3, -4 - NO PRIMER OR ENAMEL ON THIS SURFACE. APPLY BMS 3-3, TYPE 1 DRY FILM LUBRICANT PER 20-50-08 OR OPTIONAL WEBER AIRCRAFT SPECIFICATION WPC-303 (OVERSPRAY PERMISSABLE).

Repair and Refinish Diagram
Figure 401 (Sheet 2)

BOEING 
COMMERCIAL JET
OVERHAUL MANUAL

65-49115
65-81432
DASH NUMBERS LIMITED

3. Replacement (Fig. 1101)

- A. Replace bearings (8) by pressing bearings into 0.7490- to 0.7495-inch diameter bores of roller (9). Overall length of roller assembly (7) shall be per dimensions shown in Fig. 401. Roller swage bearings (8) into roller (9) per 20-50-03.
- B. Replace foil markers (29 or 30) by applying per 20-50-05. After application, apply one coat A423, clear epoxy enamel, over marker and extend 1/8 to 1/4 inch on surrounding area.
- C. Replace shim (32) by bonding per type 38, 20-50-12.

OVERHAUL MANUAL

ASSEMBLY

1. Install pins (27 and 28, Fig. 1101) from near side of base (31). Install pins flush to 0.03 inch above flush to flat surfaces of base.
2. Mount studs (26) on base (31) with screws (25).
3. Insert bolts (13) into base (31) and place tension springs (12 or 12A), as applicable, on bolts. Screw bolts (13) into studs (11) until holes in bolts and studs are aligned, and install roll pins (10).

NOTE: Both ends of roll pins (10, P/N MS16562-3) must be recessed 0.05 inch and filled over with BMS 5-26 sealant.

4. Install parts in shear plunger assemblies (17) as follows:
 - A. Place spring (23) on plunger (24), slide plunger into housing (22) and through washers (20 and 21).
 - B. Install handle (19) on plunger (24) with pin (18).

NOTE: Use washer (21) as required to maintain lower flange of plunger (24) flush with lower face of housing (22) within ± 0.01 inch.

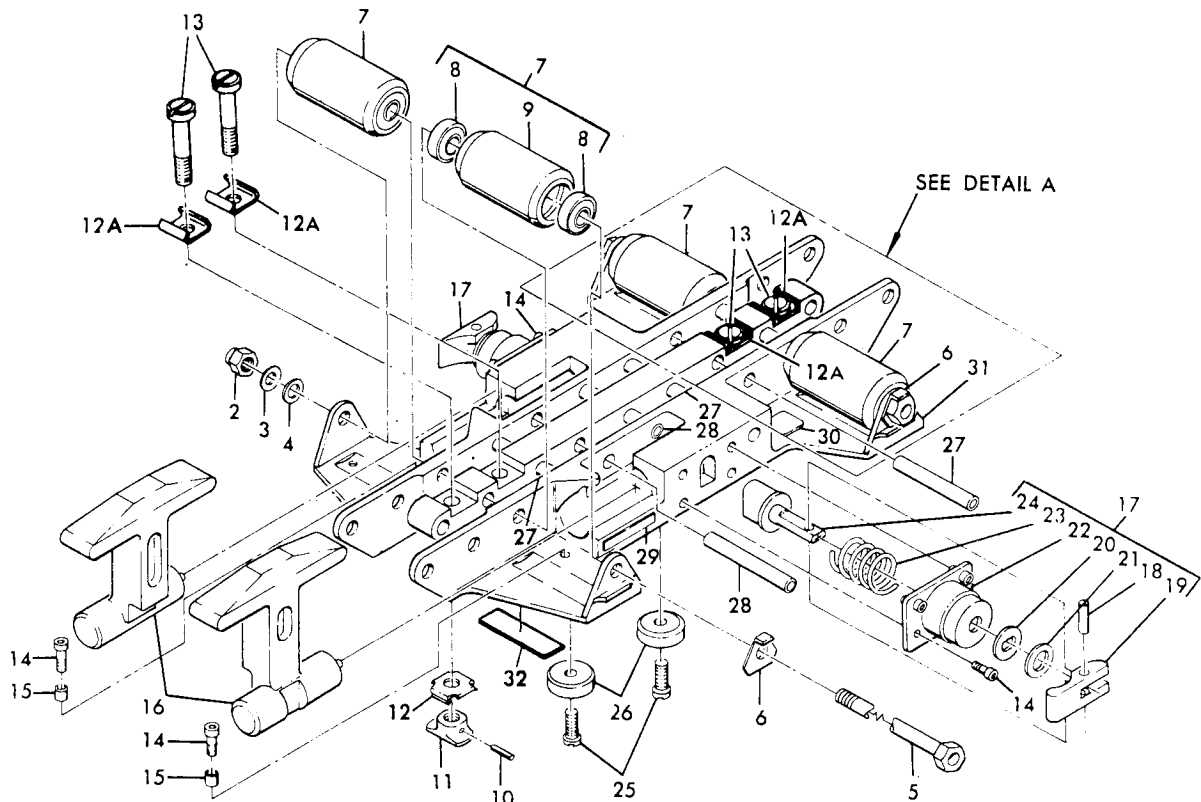
CAUTION: LOCK HEAD MUST BE KEPT CLEAN AND PROTECTED DURING ASSEMBLY TO PREVENT DAMAGE TO DRY FILM LUBRICATED SURFACE.

5. Place lock heads (16) in base (31), and slide to erected position.
6. Insert shear plunger assemblies (17) into base (31) so that plungers (24) are mated in detents provided in sides of lock heads (16) and install screws (14).
7. Mount spacers (15) on base (31) with screws (14).
8. Install bolts (5), retainers (6), roller assemblies (7), washers (4 and 3), nuts (2), and cotter pin (1).

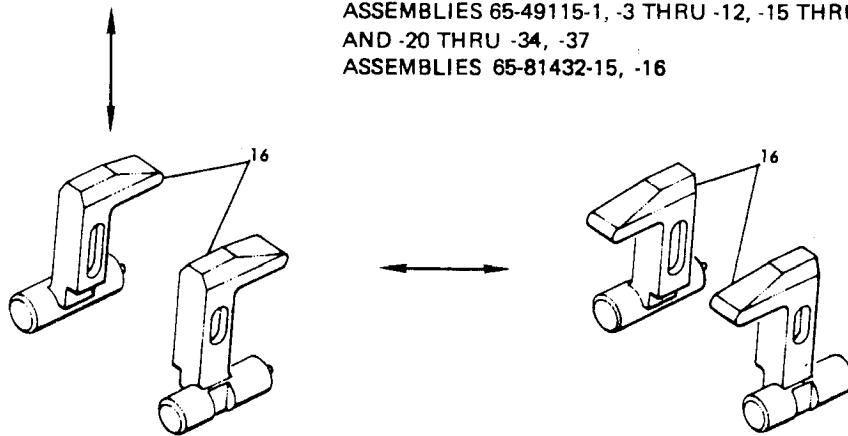
NOTE: If travel of lock heads (16) is impaired by protruding pin (27 or 28), 0.03 inch above flush pin tolerance must be reduced to eliminate interference.

NOTE: Cotter pin (1) used on 65-49115-16 assembly only. Use washers (4 and 3) as required to maintain 0.01 to 0.03 inch end play on bolts (5).

ILLUSTRATED PARTS LIST



ASSEMBLIES 65-49115-1, -3 THRU -12, -15 THRU -18,
 AND -20 THRU -34, -37
 ASSEMBLIES 65-81432-15, -16

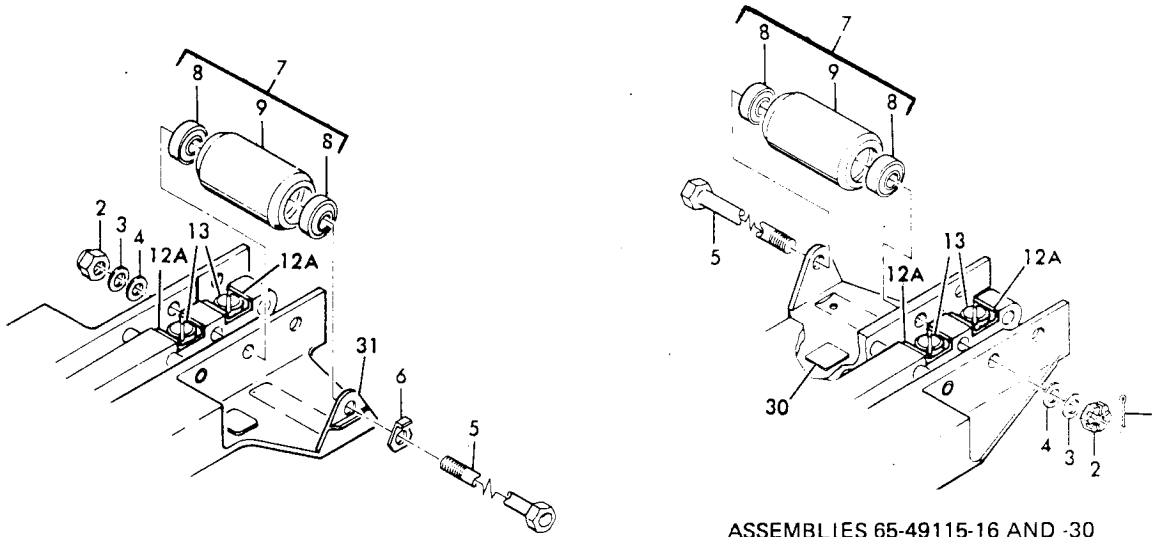


ASSEMBLIES 65-49115-9 THRU -12
 AND -25 THRU -28

ASSEMBLIES 65-49115-8, -15 THRU -18
 -29 THRU -32, -34 AND -37

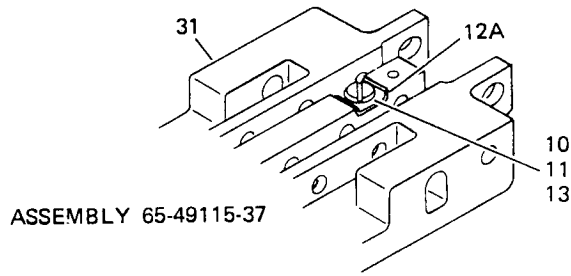
BOEING
COMMERCIAL JET
OVERHAUL MANUAL

65-49115
 65-81432
 DASH NUMBERS LIMITED



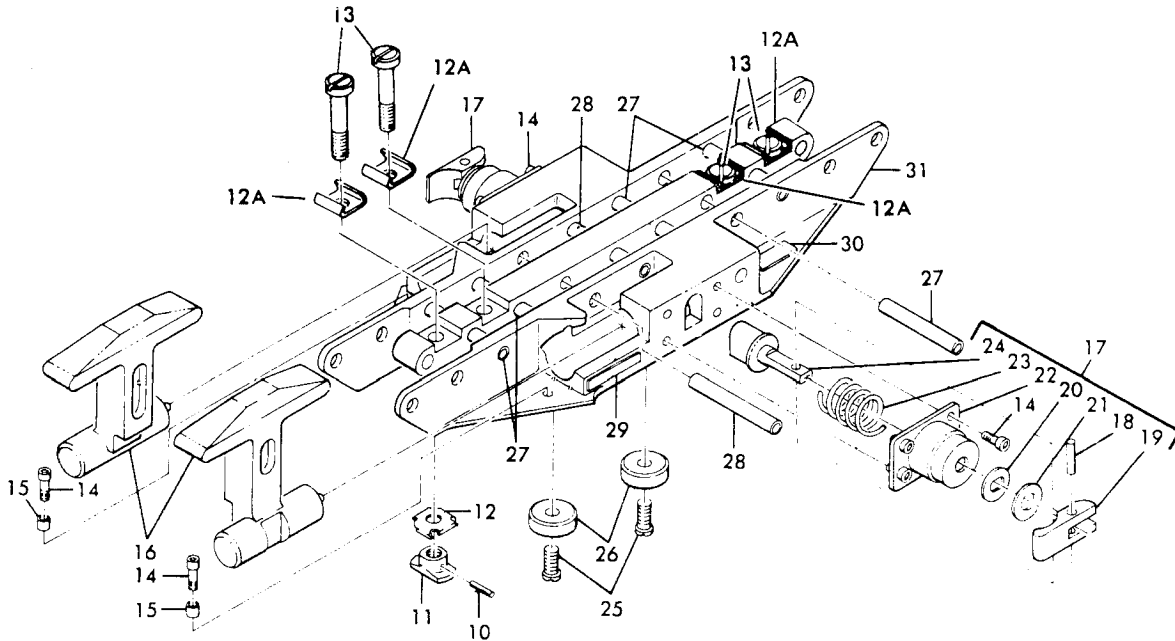
ASSEMBLIES 65-49115-15 AND -29

ASSEMBLIES 65-49115-16 AND -30



ASSEMBLY 65-49115-37

DETAIL A



ASSEMBLIES 65-49115-2, -13, -19, -35, -36 AND -38

Cargo Pallet Lock Assembly
 Figure 1101 (Sheet 2)

65-49115
 65-81432
 DASH NUMBERS LIMITED

BOEING 
COMMERCIAL JET
OVERHAUL MANUAL

FIG. & ITEM NO.	PART NO.	AIRLINE PART NUMBER	N O M E N C L A T U R E							USE CODE	QTY PER ASSY
			1	2	3	4	5	6	7		
1101-	65-49115-1		LOCK ASSY, CARGO PALLET							A	RF
	65-49115-2		LOCK ASSY, CARGO PALLET							B	RF
	65-49115-3		LOCK ASSY, CARGO PALLET							C	RF
	65-49115-4		LOCK ASSY, CARGO PALLET							D	RF
	65-49115-5		LOCK ASSY, CARGO PALLET							E	RF
	65-49115-6		LOCK ASSY, CARGO PALLET							F	RF
	65-49115-7		LOCK ASSY, CARGO PALLET							G	RF
	65-49115-8		LOCK ASSY, CARGO PALLET							H	RF
	65-49115-9		LOCK ASSY, CARGO PALLET							J	RF
	65-49115-10		LOCK ASSY, CARGO PALLET							K	RF
	65-49115-11		LOCK ASSY, CARGO PALLET							L	RF
	65-49115-12		LOCK ASSY, CARGO PALLET							M	RF
	65-49115-13		LOCK ASSY, CARGO PALLET							N	RF
	65-49115-15		LOCK ASSY, CARGO PALLET							P	RF
	65-49115-16		LOCK ASSY, CARGO PALLET							Q	RF
	65-49115-17		LOCK ASSY, CARGO PALLET							R	RF
	65-49115-18		LOCK ASSY, CARGO PALLET							S	RF
	65-49115-19		LOCK ASSY, CARGO PALLET							T	RF
	65-49115-20		LOCK ASSY, CARGO PALLET (SB 25-172)							BA	RF
	65-49115-21		LOCK ASSY, CARGO PALLET (SB 25-172)							CA	RF
	65-49115-22		LOCK ASSY, CARGO PALLET (SB 25-172)							DA	RF
	65-49115-23		LOCK ASSY, CARGO PALLET (SB 25-172)							EA	RF
	65-49115-24		LOCK ASSY, CARGO PALLET (SB 25-172)							FA	RF
	65-49115-25		LOCK ASSY, CARGO PALLET (SB 25-172)							GA	RF
	65-49115-26		LOCK ASSY, CARGO PALLET (SB 25-172)							HA	RF
	65-49115-27		LOCK ASSY, CARGO PALLET (SB 25-172)							IA	RF
	65-49115-28		LOCK ASSY, CARGO PALLET (SB 25-172)							JA	RF
	65-49115-29		LOCK ASSY, CARGO PALLET (SB 25-172)							KA	RF
	65-49115-30		LOCK ASSY, CARGO PALLET (SB 25-172)							LA	RF
	65-49115-31		LOCK ASSY, CARGO PALLET (SB 25-172)							MA	RF
	65-49115-32		LOCK ASSY, CARGO PALLET (SB 25-172)							NA	RF
	65-49115-33		LOCK ASSY, CARGO PALLET (SB 25-172)							OA	RF
	65-49115-34		LOCK ASSY, CARGO PALLET (SB 25-172)							PA	RF
	65-49115-35		LOCK ASSY, CARGO PALLET (SB 25-172)							QA	RF
	65-49115-36		LOCK ASSY, CARGO PALLET (SB 25-172)							RA	RF
	65-81432-15		LOCK ASSY, CARGO PALLET (SB 3080)							SA	RF
65-81432-16		LOCK ASSY, CARGO PALLET (SB 3080)							TA	RF	
65-49115-37		LOCK ASSY, CARGO PALLET							UA	RF	
65-49115-38		LOCK ASSY, CARGO PALLET							VA	RF	
1	MS24665-136		. PIN, COPPER						QLA	1	
2	BACN10JD105		. NUT (REPLS AN320-5)						QLA	1	

BOEING
COMMERCIAL JET
OVERHAUL MANUAL

65-49115
65-81432
DASH NUMBERS LIMITED

FIG. & ITEM NO.	PART NO.	AIRLINE PART NUMBER	N O M E N C L A T U R E							USE CODE	QTY PER ASSY	
			1	2	3	4	5	6	7			
1101-2	BACN10JC5									. NUT (REPLS NAS679A5)	AC-H J-MPR S BA-KA MA-PA SATA	2
2	BACB10JC5									. NUT (REPLS NAS679A5)	UA	1
3	AN960-516									. WASHER	AC-HJ KLP-S EA-GA TAUA	AP
4	AN960-516L									. WASHER	AC-HJ KLP-S BA-PA SATAVA	AP
5	BACB30NE5-98									. BOLT (REPLS NAS1105-98)	AC-H J-MRS BA-JA MA-PA SATA	2
5	BACB30NE5-98									. BOLT (REPLS NAS1105-98)	PQ KALA UA	1
6	69-39961-2									. RETAINER	AC-H J-MRS BA-KA MA-PA SATA	2
6	69-39961-2									. RETAINER	QLA	1
7	69-36905-2									. ROLLER ASSY	AC-H J-MRS BA-IA MA-PA SATA	4
7	69-36905-2									. ROLLER ASSY	PQKA LA UA	3
8	594									. . BEARING, V73134)		2
9	69-36904-2									. . ROLLER		1
10	MS16562-4									. ROLL PIN	A-H J-NPT SATAVA	4

OVERHAUL MANUAL

FIG. & ITEM NO.	PART NO.	AIRLINE PART NUMBER	N O M E N C L A T U R E							USE CODE	QTY PER ASSY																						
			1	2	3	4	5	6	7																								
1101-10	MS16562-3		.	R	O	L	L	P	I	N	BA-RA	4																					
10	MS16562-4		.	R	O	L	L	P	I	N	UA	3																					
11	69-36923-1		.	S	T	U	D	,	T	E	N	S	I	O	A-H	4																	
											J-N																						
											P-TSA																						
											TA																						
11	69-36923-2		.	S	T	U	D	,	T	E	N	S	I	O	BA-RA	4																	
											VA																						
11	69-36923-2		.	S	T	U	D	,	T	E	N	S	I	O	UA	3																	
12	69-36908-1		.	S	P	R	I	N	G	,	T	E	N	S	I	O	A-H	4															
											J-N																						
											P-TSA																						
											TA																						
12A	69-61243-1		.	S	P	R	I	N	G	,	T	E	N	S	I	O	BA-RA	4															
12A	69-38412-5		.	S	P	R	I	N	G	,	T	E	N	S	I	O	BA-RA	4															
12A	69-38412-5		.	S	P	R	I	N	G	,	T	E	N	S	I	O	UA	3															
12A	69-38412-5		.	S	P	R	I	N	G	,	T	E	N	S	I	O	VA	4															
12A	69-61522-1		.	D	E	L	E	T	E	D																							
13	66-23613-1		.	B	O	L	T	,	T	E	N	S	I	O	A-H	4																	
											J-N																						
											P-TSA																						
											TA																						
13	66-23613-6		.	B	O	L	T	,	T	E	N	S	I	O	BA-RA	4																	
13	66-23613-5		.	B	O	L	T	,	T	E	N	S	I	O	BA-RA	4																	
											VA																						
13	66-23613-6		.	B	O	L	T	,	T	E	N	S	I	O	UA	3																	
14	MS21295-6		.	S	C	R	E	W							10																		
15	NAS42DD5-6		.	S	P	A	C	E	R						2																		
16	65-51709-1		.	L	O	C	K	H	E	A	D	(R	E	P	L	D	B	Y	6	5	-	5	1	7	0	9	-	9)	JKGA	1	
																					HATA												
16	65-51709-2		.	L	O	C	K	H	E	A	D	(R	E	P	L	D	B	Y	6	5	-	5	1	7	0	9	-	1	0)	JKGA	1
																					HATA												
16	65-51709-3		.	L	O	C	K	H	E	A	D	(R	E	P	L	D	B	Y	6	5	-	5	1	7	0	9	-	1	1)	HPQRS	1
																					KALA												
																					MANA												
																					PAUA												
16	65-51709-4		.	L	O	C	K	H	E	A	D	(R	E	P	L	D	B	Y	7	5	-	5	1	7	0	9	-	1	2)	HPQRS	1
																					KALA												
																					MANA												
																					PAUA												

OVERHAUL MANUAL

FIG. & ITEM NO.	PART NO.	AIRLINE PART NUMBER	N O M E N C L A T U R E							USE CODE	QTY PER ASSY	
			1	2	3	4	5	6	7			
1101-16	65-51709-5		.								A-DGN BACA DAOA QARA SA	1
16	65-51709-6		.								A-DGN BACA DAOA QARA SA	1
16	65-51709-9		.								JKGA HATA	1
16	65-51709-10		.								JKGA HATA	1
16	65-51709-11		.								HPQRS KA LA MA NA PA UA	1
16	65-51709-12		.								HPQRS KA LA MA NA PA UA	1
16	65-51709-13		.								A-DGN BA CA DA OA QA RA SA	1
16	65-51709-14		.								A-DGN BA CA DA OA QA RA SA	1
16	65-51711-1		.								LMIA JA	1
16	65-51711-2		.								LMIA JA	1
16	65-51711-5		.								LM IA JA	1
16	65-51711-6		.								LM IA JA	1
16	69-36911-1		.								EF	1
16	69-36911-2		.								EF	1
16	69-36911-5		.								EF	1
16	69-36911-6		.								EF	1
16	69-50902-1		.								TVA	1

OVERHAUL MANUAL

FIG. & ITEM NO.	PART NO.	AIRLINE PART NUMBER	N O M E N C L A T U R E							USE CODE	QTY PER ASSY
			1	2	3	4	5	6	7		
1101-											
16	69-50902-2									TVA	1
16	69-50902-3									TVA	1
16	69-50902-4									TVA	1
17	69-39375-1										1
17	69-39375-2										1
18	MS16562-24										1
19	69-38408-1										1
20	66-23616-1										1
21	AN960PD516L										AR
22	69-38405-1										1
23	MS24585C285										1
24	69-38404-1										1
25	BACS12BG3-8									A-TA VA	2
25	LL603-8									A-TA VA	2
25	BACS12BG3-8									UA	1
25	LL603-8									UA	1
26	66-23607-1									A-TA VA	2
26	66-23607-1									UA	1
27	69-43623-3									ACDGH J-MPQ RS BA-EA HA JA-MA OA-SA TA	3
27	66-23603-2									ACDGH J-MPQ RSBA DAEA HA-RA TA	3
27	69-43623-3									EFFA GAUA	2
27	69-43623-3									BNTCA NARA	5
27	69-43623-3									VA	4
27	66-23603-2									EFFA GA	2
27	66-23603-2									BNTCA NARA	5

OVERHAUL MANUAL

FIG. & ITEM NO.	PART NO.	AIRLINE PART NUMBER	N O M E N C L A T U R E							USE CODE	QTY PER ASSY					
			1	2	3	4	5	6	7							
1101-28	66-23603-1		.	P	I	N	(O	P	T)	A-DGH J-N P-S BA-EA HA-RA TA	2				
28	66-23603-1		.	P	I	N	(O	P	T)	EFFA GA	2				
28	69-43623-2		.	P	I	N	(P	R	E	F)	A-DGH J-N P-T BA-EA HA-SA TAUA	2			
28	69-43623-2		.	P	I	N	(P	R	E	F)	EFFA GAVA	3			
29	BACM1ON2EMW		.	M	A	R	K	E	R	,	F	O	I	L	ASA	1
29	BACM1ON2EMX		.	M	A	R	K	E	R	,	F	O	I	L	B	1
29	BACM1ON2EMY		.	M	A	R	K	E	R	,	F	O	I	L	C	1
29	BACM1ON2EMZ		.	M	A	R	K	E	R	,	F	O	I	L	D	1
29	BACM1ON2ENA		.	M	A	R	K	E	R	,	F	O	I	L	E	1
29	BACM1ON2ENB		.	M	A	R	K	E	R	,	F	O	I	L	F	1
29	BACM1ON2ENC		.	M	A	R	K	E	R	,	F	O	I	L	G	1
29	BACM1ON2END		.	M	A	R	K	E	R	,	F	O	I	L	H	1
29	BACM1ON2ENE		.	M	A	R	K	E	R	,	F	O	I	L	JTA	1
29	BACM1ON2ENF		.	M	A	R	K	E	R	,	F	O	I	L	K	1
29	BACM1ON2ENG		.	M	A	R	K	E	R	,	F	O	I	L	L	1
29	BACM1ON2ENH		.	M	A	R	K	E	R	,	F	O	I	L	M	1
29	BACM1ON2ENJ		.	M	A	R	K	E	R	,	F	O	I	L	N	1
29	BACM1ON2ERJ		.	M	A	R	K	E	R	,	F	O	I	L	P	1
29	BACM1ON2ERK		.	M	A	R	K	E	R	,	F	O	I	L	Q	1
29	BACM1ON2EUM		.	M	A	R	K	E	R	,	F	O	I	L	R	1
29	BACM1ON2EUN		.	M	A	R	K	E	R	,	F	O	I	L	S	1
29	BAC27DCA48		.	M	A	R	K	E	R	,	F	O	I	L	T	1
29	BAC27DCA278		.	M	A	R	K	E	R	,	F	O	I	L	ABA	1
29	BAC27DCA279		.	M	A	R	K	E	R	,	F	O	I	L	BCA	1
29	BAC27DCA280		.	M	A	R	K	E	R	,	F	O	I	L	CDA	1
29	BAC27DCA281		.	M	A	R	K	E	R	,	F	O	I	L	DEA	1
29	BAC27DCA282		.	M	A	R	K	E	R	,	F	O	I	L	EFA	1
29	BAC27DCA283		.	M	A	R	K	E	R	,	F	O	I	L	FGA	1
29	BAC27DCA284		.	M	A	R	K	E	R	,	F	O	I	L	GHA	1
29	BAC27DCA285		.	M	A	R	K	E	R	,	F	O	I	L	HIA	1
29	BAC27DCA286		.	M	A	R	K	E	R	,	F	O	I	L	JA	1
29	BAC27DCA287		.	M	A	R	K	E	R	,	F	O	I	L	KA	1

65-49115
 65-81432
 DASH NUMBERS LIMITED



OVERHAUL MANUAL

FIG. & ITEM NO.	PART NO.	AIRLINE PART NUMBER	N O M E N C L A T U R E							USE CODE	QTY PER ASSY
			1	2	3	4	5	6	7		
1101-											
29	BAC27DCA288		.							LA	1
29	BAC27DCA289		.							MA	1
29	BAC27DCA290		.							NA	1
29	BAC27DCA291		.							OA	1
29	BAC27DCA292		.							PA	1
29	BAC27DCA293		.							QA	1
29	BAC27DCA294		.							RA	1
29	BAC27DCA365		.							UA	1
29	BAC27DCA366		.							VA	1
30	BACM1OA48BB		.							NQA	1
30	BACM1OA48BC		.							AGHKL	1
										MP-S	
										BA	
										GA-PA	
										SA	
30	BACM1OA48BD		.							BS	1
30	BACM1OA48BE		.							C-FEA	1
										FA	
31	65-49149-1		.							ASA	1
31	65-49149-2		.							BN	1
31	65-49149-3		.							CJRTA	1
31	65-49149-4		.							DKS	1
31	65-49149-5		.							E	1
31	65-49149-6		.							F	1
31	65-49149-7		.							L	1
31	65-491491-8		.							M	1
31	65-49149-10		.							G	1
31	65-49149-11		.							H	1
31	65-49149-12		.							P	1
31	65-49149-13		.							Q	1
31	65-49149-14		.							T	1
31	65-49149-15		.							A	1
31	65-49149-16		.							QARA	1
31	65-49149-17		.							CAGA	1
										MA	
31	65-49149-18		.							DAHA	1
										NA	
31	65-49149-19		.							EA	1
31	65-49149-20		.							FA	1
31	65-49149-21		.							IA	1
31	65-49149-22		.							JA	1
31	65-49149-23		.							UA	1

OVERHAUL MANUAL

FIG. & ITEM NO.	PART NO.	AIRLINE PART NUMBER	N O M E N C L A T U R E							USE CODE	QTY PER ASSY
			1	2	3	4	5	6	7		
1101-											
31	65-49149-24		.	B	A	S	E			OA	1
31	65-49149-25		.	B	A	S	E			PA	1
31	65-49149-26		.	B	A	S	E			KA	1
31	65-49149-27		.	B	A	S	E			LA	1
31	65-49149-28		.	B	A	S	E			VA	1
32	BACS40R05B12		.	S	H	I	M			SA	1
32	BACS40R15E40		.	S	H	I	M			TA	1

VENDORS

V03038 LONGLOK CORP., 4101 REDWOOD AVENUE, LOS ANGELES, CALIFORNIA 90066

V73134 THE HEIM UNIVERSAL CORP., 60 ROUND HILL ROAD, FAIRFIELD, CONNECTICUT
 06430

Part No.	Fig. and Index No.	Qty. per Assy.
AN320-5	1101-	AR
AN960-516		AR
AN960-516L		AR
AN960PD516L		AR
BACB30NE5-64	5	1
BACB30NE5-98	5	2
BACB30NE5-98	5	1
BACB30NE5D64	5	1
BACM10A48BB	30	1
BACM10A48BC	30	1
BACM10A48BD	30	1
BACM10A48BE	30	1
BACM10N2EMW	29	1
BACM10N2EMX	29	1
BACM10N2EMY	29	1
BACM10N2EMZ	29	1
BACM10N2ENA	29	1
BACM10N2ENB	29	1
BACM10N2ENC	29	1
BACM10N2END	29	1
BACM10N2ENE	29	1
BACM10N2ENF	29	1
BACM10N2ENG	29	1
BACM10N2ENH	29	1
BACM10N2ENJ	29	1
BACM10N2ERJ	29	1
BACM10N2ERK	29	1
BACM10N2EUM	29	1
BACM10N2EUN	29	1
BACN10JC5	2	2
BACN10JD105	2	1
BACs12BG3-8	25	2
BACs40RO5B12	32	1
BACs40R15E40	32	1
BAC27DCA278	29	1
BAC27DCA279	29	1
BAC27DCA280	29	1
BAC27DCA281	29	1
BAC27DCA282	29	1
BAC27DCA283	29	1
BAC27DCA284	29	1
BAC27DCA285	29	1

Part No.	Fig. and Index No.	Qty. per Assy.
BAC27DCA286	29	1
BAC27DCA287	29	1
BAC27DCA288	29	1
BAC27DCA289	29	1
BAC27DCA290	29	1
BAC27DCA291	29	1
BAC27DCA292	29	1
BAC27DCA293	29	1
BAC27DCA294	29	1
BAC27DCA48	29	1
MS16562-24		AR
MS16562-3		AR
MS16562-4		AR
MS21295-6		AR
MS24585C285		AR
MS24665-136		AR
NAS1105-64		AR
NAS1105-64D		AR
NAS1105-98		AR
NAS42DD5-6		AR
NAS679A5		AR
594	8	2
65-49115-1	1101	RF
65-49115-10	1101	RF
65-49115-11	1101	RF
65-49115-12	1101	RF
65-49115-13	1101	RF
65-49115-15	1101	RF
65-49115-16	1101	RF
65-49115-17	1101	RF
65-49115-18	1101	RF
65-49115-19	1101	RF
65-49115-2	1101	RF
65-49115-20	1101	RF
65-49115-21	1101	RF
65-49115-22	1101	RF
65-49115-23	1101	RF
65-49115-24	1101	RF
65-49115-25	1101	RF

OVERHAUL MANUAL

Part No.	Fig. and Index No.	Qty. per Assy.
65-49115-26	1101	RF
65-49115-27	1101	RF
65-49115-28	1101	RF
65-49115-29	1101	RF
65-49115-3	1101	RF
65-49115-30	1101	RF
65-49115-31	1101	RF
65-49115-32	1101	RF
65-49115-33	1101	RF
65-49115-34	1101	RF
65-49115-35	1101	RF
65-49115-36	1101	RF
65-49115-4	1101	RF
65-49115-5	1101	RF
65-49115-6	1101	RF
65-49115-7	1101	RF
65-49115-8	1101	RF
65-49115-9	1101	RF
65-49149-1	31	1
65-49149-10	31	1
65-49149-11	31	1
65-49149-12	31	1
65-49149-13	31	1
65-49149-14	31	1
65-49149-15	31	1
65-49149-16	31	1
65-49149-17	31	1
65-49149-18	31	1
65-49149-19	31	1
65-49149-2	31	1
65-49149-20	31	1
65-49149-21	31	1
65-49149-22	31	1
65-49149-24	31	1
65-49149-25	31	1
55-49149-26	31	1
65-49149-27	31	1
65-49149-3	31	1
65-49149-4	31	1
65-49149-5	31	1
65-49149-6	31	1
65-49149-7	31	1
65-49149-8	31	1
65-51709-1	16	1
65-51709-2	16	1
65-51709-3	16	1
65-51709-4	16	1

Part No.	Fig. and Index No.	Qty. per Assy.
65-51709-5	16	1
65-51709-6	16	1
65-51709-9	16	1
65-51709-10	16	1
65-51709-11	16	1
65-51709-12	16	1
65-51709-13	16	1
65-51709-14	16	1
65-51711-1	16	1
65-51711-2	16	1
65-51711-5	16	1
65-51711-6	16	1
65-81432-15	1101	RF
65-81432-16	1101	RF
66-23603-1	28	2
66-23603-1	28	3
66-23603-2	27	2
66-23603-2	27	3
66-23603-2	27	5
66-23607-1	26	2
66-23613-1	13	4
66-23613-5	13	4
66-23613-6	13	4
66-23616-1	20	1
69-36904-2	9	1
69-36905-2	7	4
69-36905-2	7	3
69-36908-1	12	4
69-36911-1	16	1
69-36911-2	16	1
69-36911-5	16	1
69-36911-6	16	1
69-36923-1	11	4
69-36923-2	11	4
69-38404-1	24	1
69-38405-1	22	1
69-38408-1	19	1
69-38412-5	12A	4
69-39375-1	17	1
69-39375-2	17	1
69-39961-2	6	1
69-39961-2	6	2
69-43623-2	28	2
69-43623-2	28	3
69-43623-3	27	2
69-43623-3	27	3
69-43623-3	27	5

OVERHAUL MANUAL

Part No.	Fig. and Index No.	Qty. per Assy.
69-50902-1	16	1
69-50902-2	16	1
69-50902-3	16	1
69-50902-4	16	1
69-61243-1	12A	4
69-61522-1	12A	

Part No.	Fig. and Index No.	Qty. per Assy.
----------	--------------------	----------------