

TO: ALL HOLDERS OF RUDDER PEDAL ASSEMBLY, OVERHAUL MANUAL, 27-27-01.

REVISION 4, DATED NOV 1/02

HIGHLIGHTS

DESCRIPTION OF CHANGE	TOPICS AFFECTED												
	D & O	D / A s s y	C l e a n i n g	I n s p / C h k	R e p a i r	A s s y	F / C	T e s t	T / S h o o t i n g	S / T o o l s	S t o r a g e	I P L	L / O v e r h a u l
Deleted penetrant examination and refinish callout for cam 69-62774-1, -2					X								
Revised part number of nut (33)												X	

Nov 1/02

27-27-01
 HIGHLIGHTS
 Page 1 of 1

RUDDER PEDAL ASSEMBLY

27-27-01

BOEING P/N 5-95631-11 thru -18, -3029 thru -3036, -3039 thru 3042, -3047
thru -3050, -3053 thru -3056
65-45120-8, -9, -12 thru -23

AIRLINE P/N

THE FOLLOWING DIRECTIVES APPLY TO THIS SUBJECT:

BOEING SERVICE BULLETIN	BOEING TEMPORARY REVISION	OTHER DIRECTIVES	DATE DIRECTIVE INCORPORATED INTO TEXT
		PRR 31901	Feb 10/71
27-1043 (737)			Aug 10/71
27-135 (727)		PRR 23448	May 10/73
		PRR 31961-12	May 10/73
27-1054 (737)		PRR 32076	May 10/73
		PRR 23158-85	Dec 25/74
		PRR 23686-14	Dec 25/74
		PRR 31961-12	Dec 25/74
		PRR 24476	Nov 10/80

LIST OF EFFECTIVE PAGES

* Indicates pages revised, added or deleted in latest revision
 F Indicates foldout pages - print one side only

PAGE	DATE	PAGE	DATE	PAGE	DATE
27-27-01					
T-1	Nov 10/80				
T-2	BLANK				
* LEP-1	Nov 1/02				
LEP-2	BLANK				
T/C-1	Dec 25/74				
T/C-2	BLANK				
1	Nov 10/79				
* 2	Nov 1/02				
* 3	Nov 1/02				
4	Nov 10/80				
5	May 10/81				
6	Nov 10/80				
7	Nov 10/80				
8	Nov 10/79				
9	Nov 10/79				
10	May 10/81				
11	Nov 10/80				
12	Nov 10/80				
13	Nov 10/80				
* 14	Nov 1/02				
15	Nov 10/80				
16	Nov 10/79				
17	Nov 10/79				
18	May 10/81				
19	Nov 10/79				
20	Nov 10/79				
21	Nov 10/80				
22	BLANK				

BOEING 
COMMERCIAL JET
OVERHAUL MANUAL

TABLE OF CONTENTS

<u>Paragraph Title</u>	<u>Page</u>
Description and Operation	1
Disassembly	1
Cleaning.*[1]	
Inspection/Check.	2
Repair.	2
Assembly.	5
Fits and Clearances	6
Testing (not applicable)	
Trouble Shooting (not applicable)	
Storage Instructions.*[1]	
Special Tools, Fixtures, and Equipment (not applicable)	
Illustrated Parts List.	8

| *[1] Special instructions not required. Use standard industry practices.

RUDDER PEDAL ASSEMBLY

1. DESCRIPTION AND OPERATION

A. The rudder pedal assembly consists of right and left pedals mounted on a shaft which attaches to the upper end of an arm assembly. The lower end of the arm assembly mounts on a support shaft which attaches to the airplane structure. Rotation of the pedals actuates pushrods and bellcranks which operates the normal braking system. On some configurations, cams installed on the bellcranks operate switches which activate the autobraking system.

B. Leading Particulars

Weight -- 10 pounds
Length -- 6 inches
Width -- 20 inches
Height -- 28 inches

2. DISASSEMBLY (Fig. 2, 3)

A. Remove cotter pins (1, 5) (if applicable).

B. Remove items (2 thru 8), and brake pushrod assembly (9) for disassembly, items (10 thru 14).

C. Remove cotter pin (15) and items (16 thru 19A) (as applicable).

D. Remove retaining ring (20) and slide bellcrank assembly (21) and attached bearings from pedal arm assembly terminal (46).

NOTE: Do not remove bearing (22), marker (24) or applicable items (27 thru 32) unless necessary for repair or replacement.

E. Remove bearing (25) and bellcrank spacer (26) from bellcrank (23).

NOTE: Do not remove striker (24A) unless necessary for repair or replacement.

F. Remove nut (33), washer (34), and withdraw rudder pedal (35) from shaft (41).

G. Remove retaining ring (36), bearings (37, 38), washer (39), and spacer (40) from rudder pedal (35).

NOTE: Do not remove guide (35A) or fasteners (6A, 7A, 8A) unless necessary for repair or replacement.

H. Remove shaft (41) from pedal arm assembly (42).

NOTE: Do not remove plug of BMS 5-16 sealant from end shaft (41) unless necessary for repair or replacement.

I. Remove nut (41A), washer (41B) and bolt (41C) from rudder pedal arm assembly (42) (if applicable).

NOTE: Do not remove bearing (43), spacer (44), centering rings (45), and bearing (47) from pedal arm terminal assembly (46) or centering rings (45) from spacer (44) unless necessary for repair or replacement.

J. Remove items (54, 55, 56) from pedal arm assembly (42) (5-95631-11, -12, -13, -14).

NOTE: Do not remove terminal (48) or tubes (51) unless necessary for repair or replacement.

3. INSPECTON/CHECK

A. Check all parts for obvious defects in accordance with standard industry practices.

B. Perform penetrant examination per SOPM 20-20-02 on brake pushrod tube (14), bellcrank (23), shaft (41) (69-26660-1), rudder pedal (35), terminal (48).

C. Perform magnetic particle examination per SOPM 20-20-01 on shaft (41) (6-60400).

4. REPAIR

A. Materials

(1) Primer -- BMS 10-11, Type 1 (SOPM 20-60-02)

(2) Filling compound -- BMS 5-16 (SOPM 20-60-04)

B. Repair minor defects using standard industry practices.

C. Holes in bellcrank (23), rudder pedal (35).

(1) Machine 0.250- or 0.313-inch diameter holes as required to remove defects. Do not exceed 0.3755- (for 0.250-inch diameter hole) or 0.4380-inch (for 0.313-inch diameter hole).

- (2) Install NAS75-4 or NAS75-5 steel bushing in bellcrank or pedal with wet primer, BMS 10-11, Type 1, per SOPM 20-50-03.
- (3) Check that ID is 0.250-0.254 and 0.313-.0.317 inch respectively.

D. Refinish

NOTE: Refer to SOPM 20-30-02 for stripping of protective finishes, and to SOPM 20-41-01 for explanation of F and SRF finish codes.

- (1) Tubes (14, 51) -- Alodize all over and apply BMS 10-11, Type 1 primer on interior surface (SRF-2.902), except no primer on 1.488 inch inside diameter (51) or threads (14).
Material: Al Alloy.
- (2) Spacer (26), clevis (31) -- Alodize or chromic acid anodize and apply BMS 10-11, Type 1, primer all over (SRF-2.30). Material: Al Alloy.
- (3) Washer (39) (3-26771) -- Cadmium plate (F-1.20) all over (zinc plate [F-1.205] optional).
Material: Steel.
- (4) Shaft (41) (6-26660-1), arm fitting (52) -- Chromic acid anodize and apply BMS 10-11, Type 1 primer (SRF-2.19), except no primer on 2.85 inches extending from shaft flats (41) or on 1.488-inch interior diameter (52). Material: Al Alloy.
- (5) Shaft (41) (6-60400), weld assembly (57) -- Cadmium plate and apply BMS 10-11, Type 1, primer on interior surface (SRF-1.611). Apply one coat of yellow primer (F-12.205) on weld assembly (57) exterior surface. Material: Steel (125-165 ksi).
- (6) Arm terminal (48) -- Alodize and apply BMS 10-11, Type 1, primer all over (SRF-2.901) except no primer on bearing surfaces and 1.488-inch interior diameter. Material: Al alloy.
- (7) Pedal (35) (65-24573-1, -2, -5 thru -8) -- Anodize and apply primer (F-18.04) and apply dull dark gray lacquer (F-14.907) except on bearing surface. Material: Al Alloy.
- (8) Pedal (35) (65-24573-9, -10) -- Apply Tungsten Carbide Plasma Flame sprayed .007-010 inch thick on foot contact area. Anodize and apply primer (F-18.04) except on bearing surface and foot contact area. Apply semigloss lacquer (F-14.904-907) except on bearing surface. Material: Al Alloy.

E. Replacement

(1) Clevis (31), bushing (32).

- (a) Install bushing (32), clevis (31), washer (29), bolt (28), and nut (27) on bellcrank (23).

CAUTION: BELLCRANK AND CLEVIS ARE FASTENED BY CONTROLLED SHEAR OUT RIVET. DO NOT SUBSTITUTE RIVET SIZE OR MATERIAL.

- (b) Align clevis boltholes in bellcrank and clevis within 0.02 inch and install shear rivet (30).

(2) Pedal arm terminal (48).

- (a) (5-95631-11 thru -14, -3029 and on). Install on weld assembly (57) using rivets (59) and collar (58).
- (b) (5-95631-15 thru -18). Install on tube (51), using bolt (50) and collar (49).

(3) Centering ring (45) -- Cement one ring to each end of spacer (44) within 0.25 inch of end of spacer per 20-50-12, type 40.

(4) Tube (51) -- Install in fitting (52) per 20-50-12, type 38. After curing, install rivets (53) thru tube (51) and fitting (52).

(5) Sealant in shaft (41) ID:

- (a) Clean shaft ID thoroughly.
- (b) Apply mixture of sealant, BMS 5-16 approximately 1 inch into shaft 0.5156 diameter opening.
- (c) Cure with warm air (below 120°F).

(6) Bearings (22, 25, 43, 47)

- (a) Install bearing (22, 25) using primer BMS 10-11, type 1, on faying surfaces of bearing and bellcrank. Roller swage bearing per 20-50-03, or install ring (20).
- (b) Install bearing (47) in terminal (48), and roller stake per 20-50-03. Install centering rings (45), spacer (44), and bearing (43) in terminal. Apply primer, BMS 10-11, type 1, to faying surfaces of bearing (43, 47) and terminal when installing bearings.

BOEING 
COMMERCIAL JET
OVERHAUL MANUAL

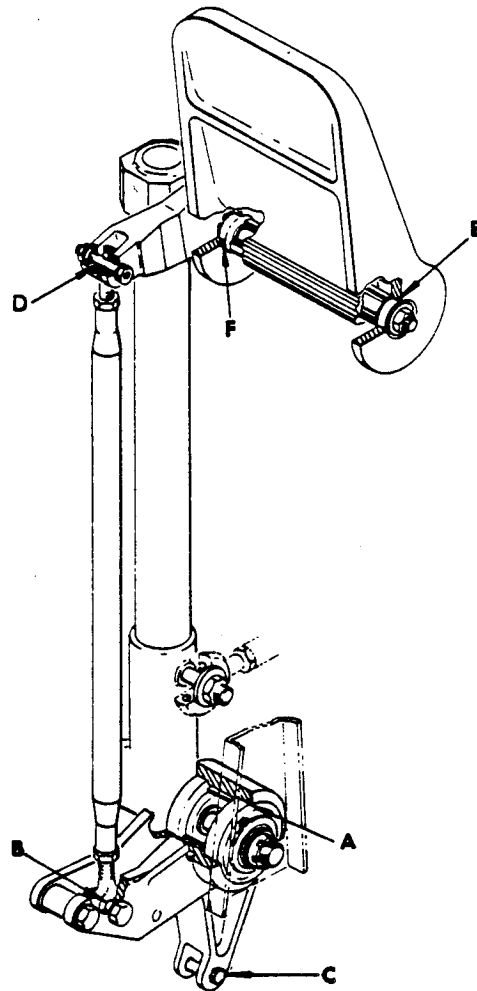
5. ASSEMBLY (Fig. 2, 3)

A. Materials

(1) Primer - BMS 10-11, type 1 (Ref 20-60-02).

- B. On 5-95631-11, -12, -13, -14 assys, attach parts (56 thru 54) to pedal arm (57).
- C. Install bolt (41C), washer (41B), and nut (41A). Tighten nut hand-tight only.
- D. Insert shaft (41) into upper end of pedal arm (42).
- E. Insert spacer (40) and washer (39) into bore of rudder pedal (35) and press bearing (38) and (37) in place with wet primer. Attach guide (35A) with parts (8A, 7A, 6A).
- F. Install retaining ring (36).
- G. Slide preassembled rudder pedal over shaft (41), install washer (34), nut (33), and tighten nut to 20-30 lb-in. in excess of nut friction torque.
- H. Insert spacer (26) in bore of bellcrank (23).
- I. Press bearing (25) in place with wet primer.
- J. Slide bellcrank (21) over terminal (46) and secure with retaining ring (20).
- K. Install parts on bellcrank (21).
- (1) On 5-95631 series assys, apply primer to shank of bolt (18) and install with parts (15, 16, 17, 19) on bellcrank (Fig. 2).
- (2) On 65-45120 assys, apply primer to shanks of bolt (18A), install cam (19A) with parts (16A, 17A) on bellcrank (Fig. 3).
- L. Assemble tube (14), bearings (10, 12), and checknuts (11, 13).
- M. Attach bearing end (12) of brake pushrod (9) to rudder pedal (35), using items (6 thru 8). Attach other end of brake pushrod to bellcrank (21) using parts (2 thru 4). Install bolt (4) with wet primer applied to shank. Install cotter pins (1, 5).

6. FITS AND CLEARANCES



Fits and Clearances
Figure 1 (Sheet 1)

BOEING
COMMERCIAL JET
OVERHAUL MANUAL

		Design Dimensions				Service Wear Limits		
Ref. Letter Fig. 1	Mating Index No. Fig. 2,3	Dimension (inches)		Assembly Clearance (inches)		Dimension Limits (inches)		Maximum Allowable Clearance (inch)
		Min.	Max.	Min.	Max.	Min.	Max.	
*[1] A	ID 21	2.000	2.001	0.0000	0.0020		2.005	0.0050
	OD 22	1.999	2.000			1.998		
*[2] A	ID 21	2.3123	2.3128	*[3] 0.0002	0.0013		2.3165	0.0040
	OD 22	2.3115	2.3125			2.3110		
B	ID 23	0.3130	0.3170	0.0010	0.0060		0.324	0.0120
	OD 4	0.3110	0.3120			0.3100		
C	ID 23 NAS1104-	0.2500	0.2540	0.0005	0.0055		0.2610	0.0115
	OD 16DW (REF)	0.2485	0.2495			0.2475		
D	ID 35	0.2500	0.2540	0.0005	0.0055		0.2610	0.0115
	OD 8	0.2485	0.2495			0.2475		
E	ID 35	1.1248	1.1253	*[3] 0.0002	0.0008		1.1273	0.0023
	OD 38	1.1245	1.1250			1.1240		
F	ID 35	1.6248	1.6253	*[3] 0.0002	0.0008		1.6273	0.0023
	OD 37	1.6245	1.6250			1.6240		

*[1] Bellcranks 65-38244-()

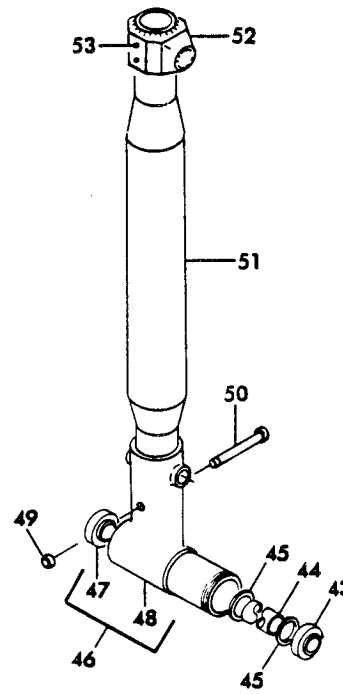
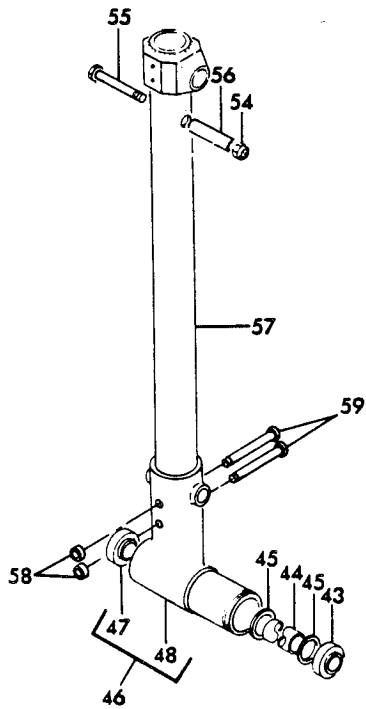
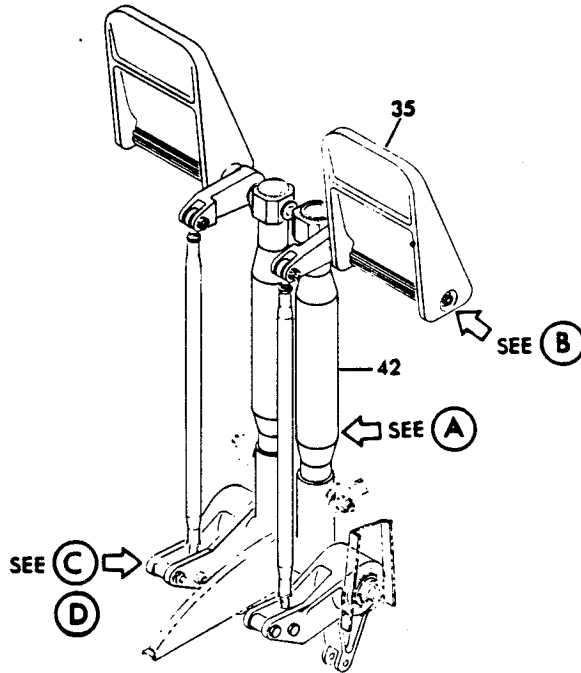
*[2] Bellcranks 65-38243-()

*[3] Interference fit

BOEING 
COMMERCIAL JET
OVERHAUL MANUAL

5-95631
 65-45120

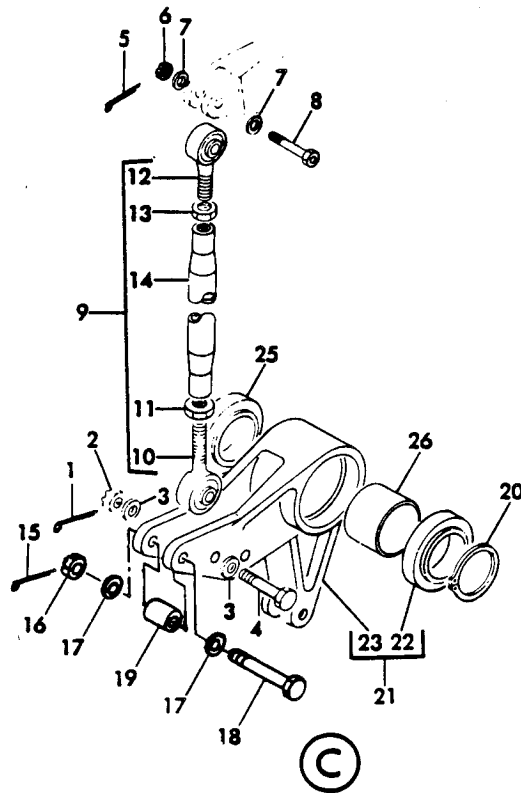
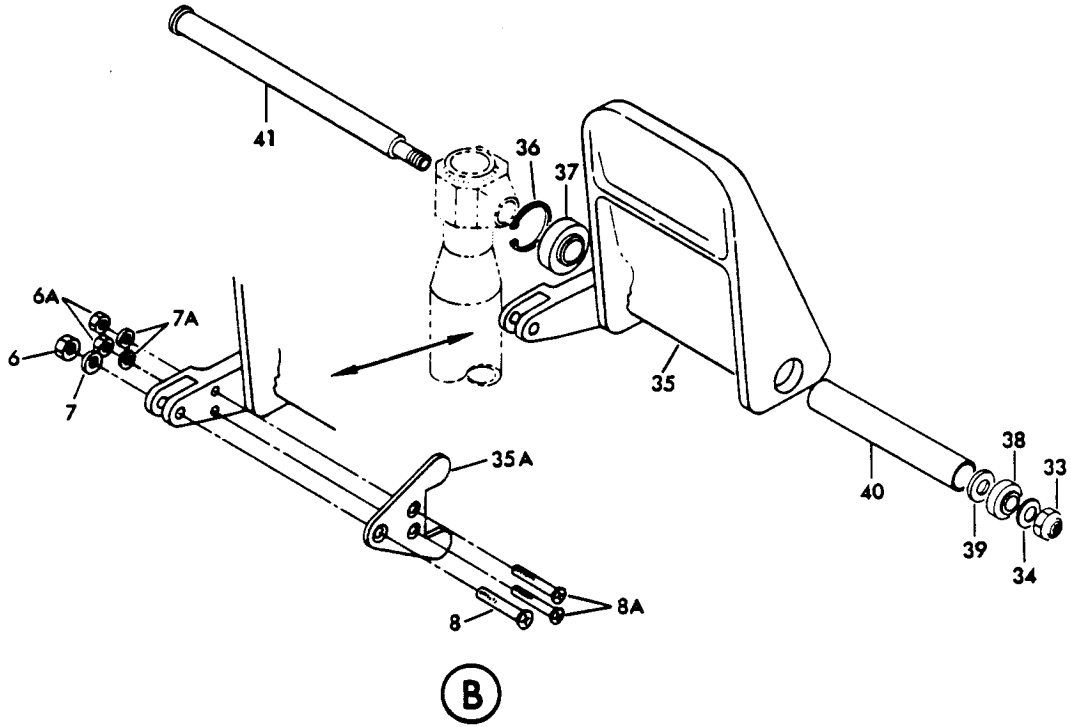
7. ILLUSTRATED PARTS LIST



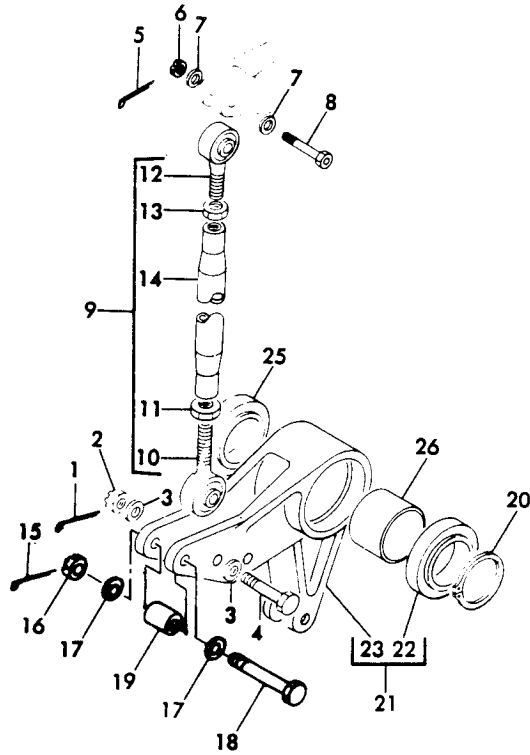
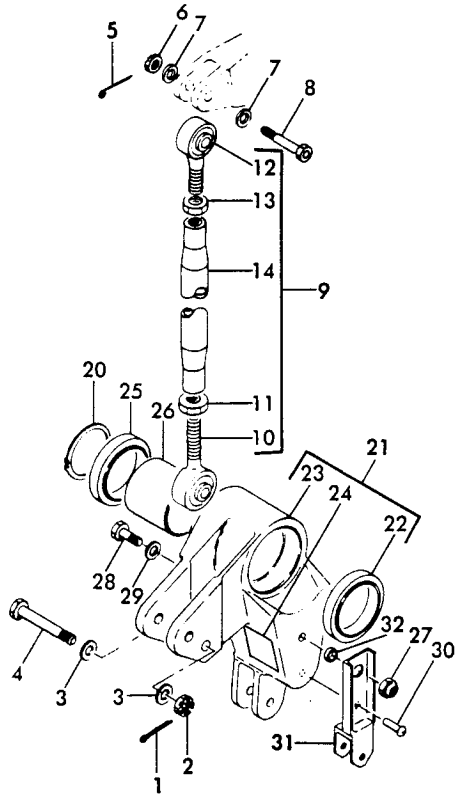
(A)

Rudder Pedal Assemblies
 Figure 2 (Sheet 1)

BOEING 
COMMERCIAL JET
OVERHAUL MANUAL



Rudder Pedal Assemblies
Figure 2 (Sheet 2)



5-95631
65-45120

BOEING 
COMMERCIAL JET
OVERHAUL MANUAL

FIG. & ITEM NO.	PART NO.	AIRLINE PART NUMBER	N O M E N C L A T U R E							USE CODE	QTY PER ASSY
			1	2	3	4	5	6	7		
2-	5-95631-11									A	RF
	5-95631-12									B	RF
	5-95631-13									C	RF
	5-95631-14									D	RF
	5-95631-15									E	RF
	5-95631-16									F	RF
	5-95631-17									G	RF
	5-95631-18									H	RF
	5-95631-3029									I	RF
	5-95631-3030									J	RF
	5-95631-3031									K	RF
	5-95631-3032									L	RF
	5-95631-3033									M	RF
	5-95631-3034									N	RF
	5-95631-3035									O	RF
	5-95631-3036									P	RF
	5-95631-3039									Q	RF
	5-95631-3040									R	RF
	5-95631-3041									S	RF
	5-95631-3042									T	RF
	5-95631-3047									U	RF
	5-95631-3048									V	RF
	5-95631-3049									W	RF
	5-95631-3050									X	RF
	5-95631-3053									Y	RF
	5-95631-3054									Z	RF
	5-95631-3055									BA	RF
	5-95631-3056									CA	RF
1	MS24665-134									A-L	1
2	BACN10JD105									A-L	1
2	BACN10JC5									M-CA	1
3	NAS1197-516									A-L	2
3	AN960PD516L									M-CA	1
4	BACB30LU5-26									DELETED	
4	BACB30NE5-23									. BOLT	M-P 1 U-CA 1
4	NAS1105-25D									. BOLT (REPLS NAS1105-25DW)	A-L 1
5	MS24665-132									. PIN, COTTER (REPLS AN380-2-2)	A-H 1
6	BACN10JD104									. NUT (REPLS AN320-4)	A-H 1
6	BACN10JC4									. NUT (SB 27-135)	1

BOEING

COMMERCIAL JET
OVERHAUL MANUAL

5-95631
65-45120

FIG. & ITEM NO.	PART NO.	AIRLINE PART NUMBER	N O M E N C L A T U R E							USE CODE	QTY PER ASSY
			1	2	3	4	5	6	7		
2-6A	BACN10JC3										2
7	NAS1197-416L									A-H	2
7	AN960PD416										1
7A	AN960PD10										2
8	NAS1104-15D									A-H	1
8	BACB30LU4-18										1
8A	BACB30LU3-10										2
9	6-60402-3001										1
10	BACB10A74										1
11	AN316-7R										1
12	BACB10A436										1
12	BACB10A75										1
13	AN316-6R										1
14	6-60403-2000										1
15	MS24665-132									ABEFI J	1
16	BACN10JD104										1
16B	BACN10JC3										DELETED
17	NAS1197-416L										1
17B	AN960PD10L										DELETED
18	NAS1104-24D									A-NQR UVYZ	1
18B	BACB30LU3-8										DELETED
19	NAS42DD8-56									ABEFI JMNUV YZ	1
19A	69-67169-1										DELETED
19A	69-67169-2										DELETED
20	NAS670-156										1
20	MS16624-156										1
21	65-38243-5									A-L	1
21	65-38243-1									M-CA	1
21	65-38243-6									AEI	1
21	65-38243-2									AEI	1
21	65-38243-5									BFJ	1
21	65-38243-6									BFJ	1
21	65-38244-5									CGK	1
21	65-38244-1									CGK	1
21	65-38244-6									DHL	1
21	65-38244-2									DHL	1

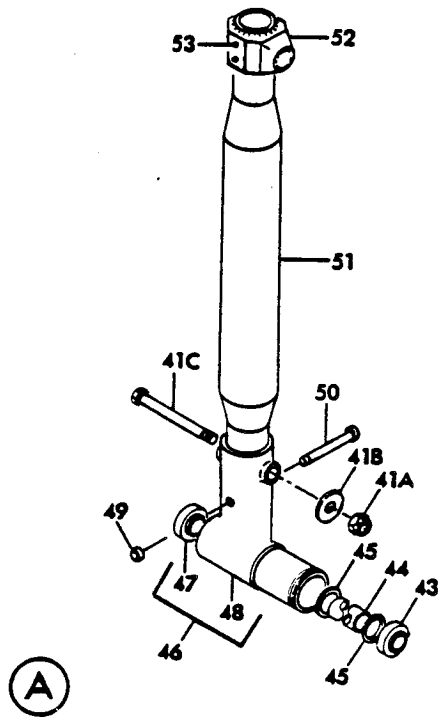
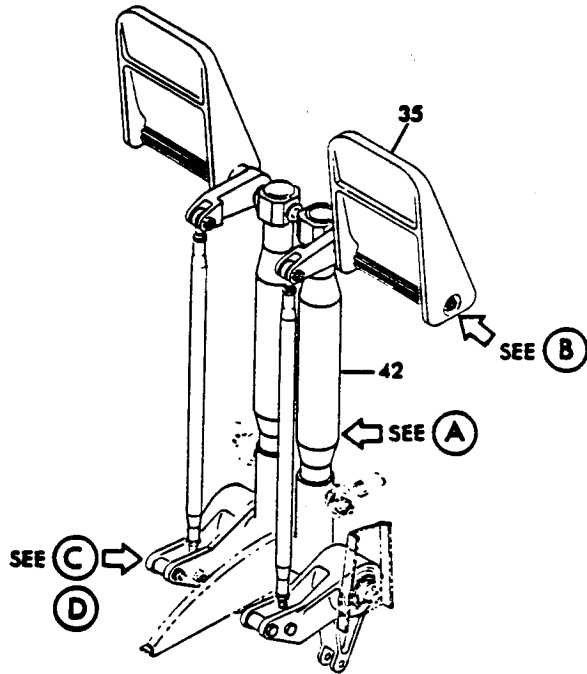
FIG. & ITEM NO.	PART NO.	AIRLINE PART NUMBER	N O M E N C L A T U R E							USE CODE	QTY PER ASSY
			1	2	3	4	5	6	7		
2-											
21	65-38243-21									MQ	1
21	65-38243-22									NR	1
21	65-38243-29									UY	1
21	65-38243-30									VZ	1
21	65-38244-11									OS	1
21	65-38244-12									PT	1
21	65-38244-15										
21	65-38244-16										
21	65-38244-27									W BA	1
21	65-38244-28									X CA	1
22	BACB10A824									ABEFI	1
										JMNQR	
22	BACB10A300DD									CDGHK	1
										LOPST	
22	MS20202KP25B										1
23	65-38243-3										1
23	65-38243-4										1
23	65-38243-7										1
23	65-38243-8										1
23	65-38243-23										1
23	65-38243-24										1
23	65-38243-27										1
23	65-38243-28										1
23	65-38244-3										1
23	65-38244-4										1
23	65-38244-7										1
23	65-38244-8										1
23	65-38243-13										1
23	65-38244-14										1
23	65-38244-17										
23	65-38244-18										
23	65-38244-25										1
23	65-38244-26										1
24	BACM1OLICWY										1
24	BACM1OLICWZ										1

FIG. & ITEM NO.	PART NO.	AIRLINE PART NUMBER	NOMENCLATURE							USE CODE	QTY PER ASSY	
			1	2	3	4	5	6	7			
2-25	BACB10A824		.								ABEFIJM NQRUVY Z	1
25	BACB10A300DD		.								CDGHKL OPSTWX BA CA	1
26	3-74659		.								ABEFIJM NQRUV YZ	1
26	3-74659-1		.								CDGHKL OPSTWX BA CA	1
27	BACN10JC4		.								CDGHKL	1
28	NAS1104-5W		.								CDGHKL	1
29	NAS1197-416L		.								CDGHKL	1
30	BACR15BB6D		.								CDGHKL	1
31	69-18947-1		.								CDGHKL OPWX BA CA	1
32	NAS75-4-003		.								CDGHKL OPSTWX BA CA	1
33	68NTE080		.								E-CA	1
33	BACN10BY58		.								A-D	1
34	AN960PD816L		.								E-CA	1
34	AN960-816L		.								A-D	1
35	65-24573-1		.								ACEG	1
35	65-24573-2		.								BDFH	1
35	65-24573-7		.								IKMOQS UWY BA	1
35	65-24573-8		.								JLNPRT WXZ CA	1

5-95631
65-45120

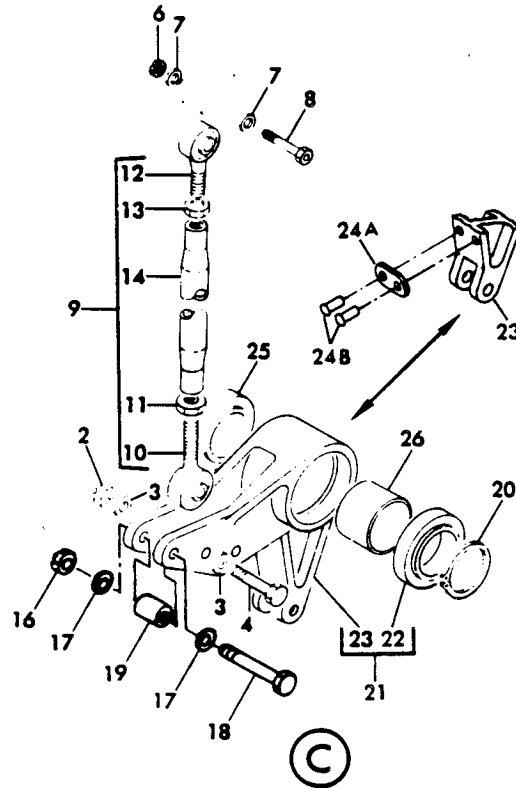
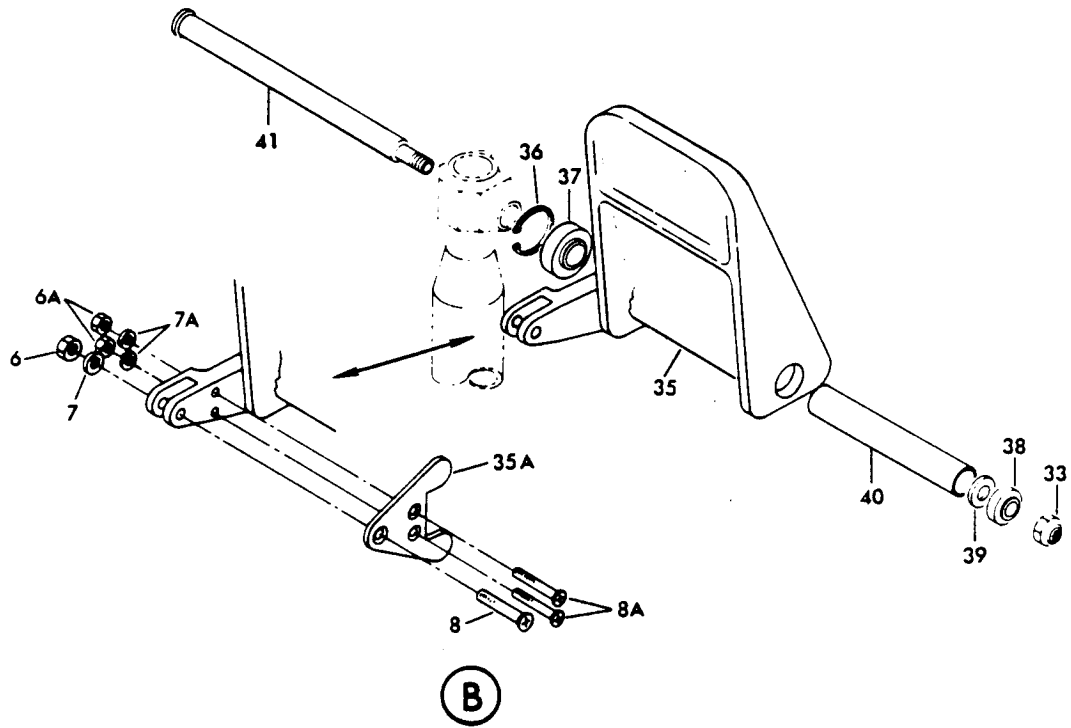
BOEING
COMMERCIAL JET
OVERHAUL MANUAL

FIG. & ITEM NO.	PART NO.	AIRLINE PART NUMBER	N O M E N C L A T U R E							USE CODE	QTY PER ASSY
			1	2	3	4	5	6	7		
2-											
35A	69-63361-1									I-T	1
35A	69-63361-1									U-CA	1
36	NAS669-162									A-P	1
										U-CA	
37	BACB10A685										1
38	BACB10A544										1
39	3-26771										1
40	NAS43DD12-376										1
41	69-26660-1									E-X	1
41	6-60400									A-D	1
										Q-T	
										Y-CA	
42	65-33517-1									E-P	1
										U-X	
42	65-7238									A-D	1
										Q-T	
										Y-CA	
43	BACB10A684										1
44	NAS43DD10-244										1
45	3-84406										2
46	65-7239-3										1
46	65-7239										1
47	BACB10A684										1
48	65-7239-4										1
48	65-7239-1										1
49	BACC30K6										1
50	BACB30GW6-29										1
51	69-26598-1										1
52	69-26599-1										1
53	BACR15BB6D										4
54	BACN10JC4										1
55	BACB30NE4-29										1
56	NAS42HT8-112										1
57	65-7238-1										1
58	BACC30C8										2
59	BACR15AY8-29										2

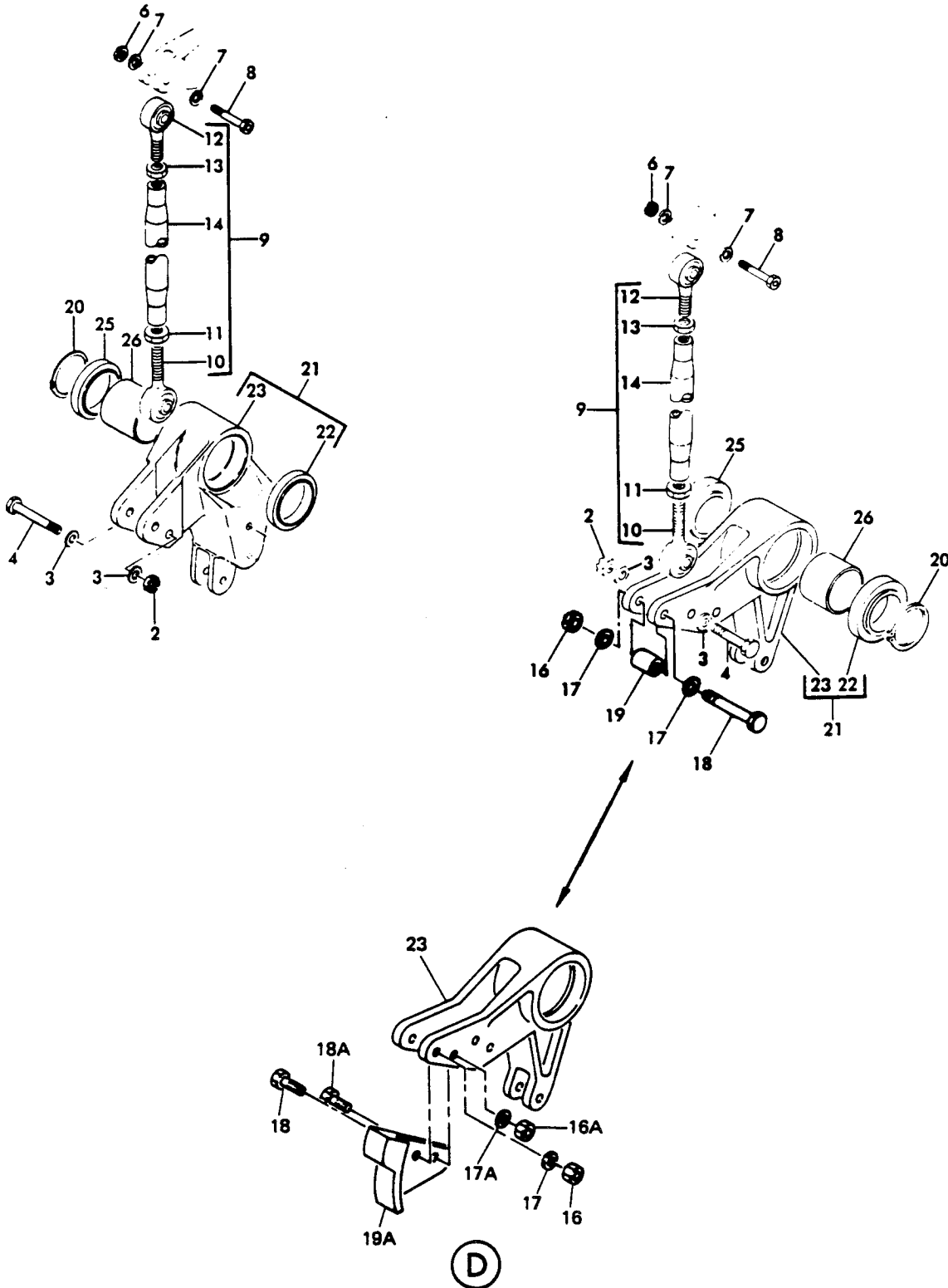


Rudder Pedal Assemblies
Figure 3 (Sheet 1)

BOEING 
COMMERCIAL JET
OVERHAUL MANUAL



Rudder Pedal Assemblies
Figure 3 (Sheet 2)



Rudder Pedal Assemblies
 Figure 3 (Sheet 3)

5-95631
65-45120

BOEING 
COMMERCIAL JET
OVERHAUL MANUAL

FIG. & ITEM NO.	PART NO.	AIRLINE PART NUMBER	N O M E N C L A T U R E							USE CODE	QTY PER ASSY	
			1	2	3	4	5	6	7			
3-	65-45120-8									A	RF	
	65-45120-9									B	RF	
	65-45120-10											
	65-45120-11											
	65-45120-12									C	RF	
	65-45120-13									D	RF	
	65-45120-14									E	RF	
	65-45120-15									F	RF	
	65-45120-16									G	RF	
	65-45120-17									H	RF	
	65-45120-18									I	RF	
	65-45120-19									J	RF	
	65-45120-20									K	RF	
	65-45120-21									L	RF	
	65-45120-22									M	RF	
	65-45120-23									N	RF	
	2	BACN10JC5										1
	3	NAS1197-516										2
	4	BACE30NF5-25										1
	6	BACN10JC4										1
	6A	BACN10JC3										1
	7	NAS1197-416L									AB	2
	7	NAS1197-416L									C-F	1
7	AN960PD416										1	
7A	AN960PD10										2	
8	BACE30LU4-15									A-F	1	
8	BACE30LU4-18										1	
8A	BACE30LU3-10										2	
9	6-60402-3001										1	
10	BACB10A74										1	
11	AN316-7R										1	
12	BACB10A436										1	
12	BACB10A75										1	
13	AN316-6R										1	
14	6-60403-2000										1	
16	BACN10JD104									A-DGH	1	
16	BACN10JC4									KL EFIJ MN	1	

BOEING 
COMMERCIAL JET
OVERHAUL MANUAL

5-95631
65-45120

FIG. & ITEM NO.	PART NO.	AIRLINE PART NUMBER	N O M E N C L A T U R E							USE CODE	QTY PER ASSY	
			1	2	3	4	5	6	7			
3-16A	BACNLOJC3		.								EFIJ MN	1
17	NAS1197-416L		.								A-DGH KL	1
17	AN960PD416L		.								EFIJ MN	1
17A	AN960PD10L		.								EFIJ MN	1
18	BACB30NF4-24		.								A-DGH KL	1
18	BACB30NF4-5		.								EFIJ MN	1
18A	BACB30NF3-6		.								EFIJ MN	1
19	NAS42DD8-56		.								A-DGH KL	1
19A	69-62774-1		.								EIM	1
19A	69-62774-2		.								FJN	1
20	MS16624-156		.									1
21	65-38243-11		.								ACGK	1
21	65-38243-12		.								BDHL	1
21	65-38243-15		.									
21	65-38243-16		.									
21	65-38243-17		.								EIM	1
21	65-38243-18		.								FJN	1
22	BACB10A824		.	.								1
23	65-38243-13		.	.							ACGK	1
23	65-38243-14		.	.							BDHL	1
23	65-38243-19		.	.							EIM	1
23	65-38243-20		.	.							FJN	1
24A	69-61757-4		.	.							EFIJ MN	1
24B	BACR15BE3AD		.	.							EFIJ MN	1
25	BACB10A824		.	.								1
26	3-74659		.									1
33	BACNLOJC8		.									1
35	65-24573-1		.								A	1
35	65-24573-2		.								B	1
35	65-24573-5		.								CE	1

BOEING 
COMMERCIAL JET
OVERHAUL MANUAL

FIG. & ITEM NO.	PART NO.	AIRLINE PART NUMBER	N O M E N C L A T U R E							USE CODE	QTY PER ASSY
			1	2	3	4	5	6	7		
3-											
35	65-24573-6								. PEDAL	DF	1
35	65-24573-7								. PEDAL (SB 27-1054)	GI	1
35	65-24573-8								. PEDAL (SB 27-1054)	HJ	1
35	65-24573-9								. PEDAL	KM	1
35	65-24573-10								. PEDAL	LN	1
35A	69-63361-1								. GUIDE (SB 27-1054)	G-N	1
36	MS16625-162								. RING		1
37	BACB10A685								. BEARING (REPLS AN201KP12A)		1
38	BACB10A544								. BEARING (REPLS AN201KP8A)		1
39	AN960-816								. WASHER		1
40	NAS43DD12-376								. SPACER		1
41	69-26660-1								. SHAFT		1
41A	BACN10JC6								. NUT		1
41B	AN970-6								. WASHER		1
41C	BACB30NF6-44								. BOLT		1
42	65-33517-1								. ARM ASSY		1
43	BACB10A684								. . BEARING (REPLS AN201KP10A)		1
44	NAS43DD10-244								. . SPACER		1
45	3-84406								. . RING		2
46	65-7239-3								. . TERMINAL ASSY		1
47	BACB10A684								. . . BEARING (REPLS AN201KP10A)		1
48	65-7239-4								. . . TERMINAL		1
49	BACC30K6								. . COLLAR		1
50	BACB30GW6-29								. . BOLT		1
51	69-26598-1								. . TUBE		1
52	69-26599-1								. . FITTING		1
53	BACR15BB6D								. . RIVET (REPLS MS20470D6)		4

VENDORS

V72962 ESNA DIV. OF AMERACE CORP., 2330 VAUXHALL ROAD, UNION, NEW JERSEY
07083