

TO: ALL HOLDERS OF ROD ASSEMBLY OVERHAUL MANUAL, 27-37-12

REVISION NO. 2, DATED JUL 1/08
HIGHLIGHTS

| DESCRIPTION OF CHANGE | TOPICS AFFECTED | | | | | | | | | | | | |
|-----------------------------------|-----------------|----------------------------|--------------------------------------|--------------------------------------|----------------------------|------------------|-------------|------------------|--|---------------------------------|---------------------------------|-------------|--|
| | D & O | D / A s s y | C l e a n i n g | I n s p / C h k | R e p a i r | A s s y | F / C | T e s t | T / S h o o t i n g | S / T o o l s | S t o r a g e | I P L | L / O v e r h a u l |
| Added USE Codes to items 4 and 12 | | | | | | | | | | | | X | |

Jul 1/08

 27-37-12
 HIGHLIGHTS
 Page 1 of 1

ROD ASSEMBLY

27-37-12

I BOEING P/N 69-44427 -2, -3

AIRLINE P/N

THE FOLLOWING DIRECTIVES APPLY TO THIS SUBJECT:

| BOEING SERVICE BULLETIN | BOEING TEMPORARY REVISION | OTHER DIRECTIVES | DATE DIRECTIVE INCORPORATED INTO TEXT |
|-------------------------------|---------------------------------|---------------------|---|
| | | PRR 33239 | Jul 5/83 |

LIST OF EFFECTIVE PAGES

* Indicates pages revised, added or deleted in latest revision
 F Indicates foldout pages - print one side only

| PAGE | DATE | PAGE | DATE | PAGE | DATE |
|----------|----------|------|------|------|------|
| 27-37-12 | | | | | |
| T-1 | Jul 5/83 | | | | |
| T-2 | BLANK | | | | |
| * LEP-1 | Jul 1/08 | | | | |
| LEP-2 | BLANK | | | | |
| 1 | Jul 5/83 | | | | |
| 2 | Jul 5/83 | | | | |
| * 3 | Jul 1/08 | | | | |
| 4 | BLANK | | | | |

BOEING 
COMMERCIAL JET
OVERHAUL MANUAL

ROD ASSEMBLY

Boeing Part Number: 69-44427-2, -3

1. DESCRIPTION AND OPERATION

A. Description

- (1) The rod assembly consists of two rod end assemblies with a connecting nut and washer at the center. The rod end assemblies are of double tube construction which acts as a dual load path.

B. Operation

- (1) The elevator control rod is fastened to the torque tube crank on one end and to the elevator mast fitting on the other end. Moving this rod causes the elevator to move up or down.

C. Leading Particulars

Length -- 15.0 inches
Diameter -- 1.75 inches
Weight -- 2.70 pounds

NOTE: Special instructions for disassembly, cleaning, and storage are not required. Standard shop practices are sufficient for the overhaul of this component.

2. INSPECTION/CHECK

A. Visual Check

- (1) Examine all parts for pits, scratches, cracks, corrosion and damage using strong light and minimum of 10-power magnification.
- (2) Examine all threaded parts for cross-threading or stripping.
- (3) Examine inner and outer tubes of tube assembly (3A). Check inner tube with borescope or equivalent tool.

B. Special Checks

- (1) If visual examination shows evidence of defects in any parts listed below, perform checks indicated.
 - (a) Dye penetrant check -- tubes (3A, 6 or 7). Longitudinal swaging lap indications on inside diameter will not be reason for rejection provided no continuation of the defects can be detected on the inside bore.
 - (b) Magnetic particle check -- nut (1).

3. REPAIR

A. Repair

- (1) Remove minor scratches, nicks, and corrosion by polishing lightly with 220-grit or finer abrasive cloth. Refinish as necessary for protection against corrosion.

B. Refinish

NOTE: Refer to Subject 20-30-02 for stripping of protective finishes and to Subject 20-41-01 for decoding F and SRF finish symbols and their BAC equivalents.

- (1) Tube assembly (3A) and tube (6) -- Apply F-8.07 except outside surface BMS 3-8 per Subject 20-50-08.
- (2) Tube (7) -- Apply F-8.07.
- (3) Sleeve (8) -- Apply F-4.201 on exterior and F-4.10 on interior.

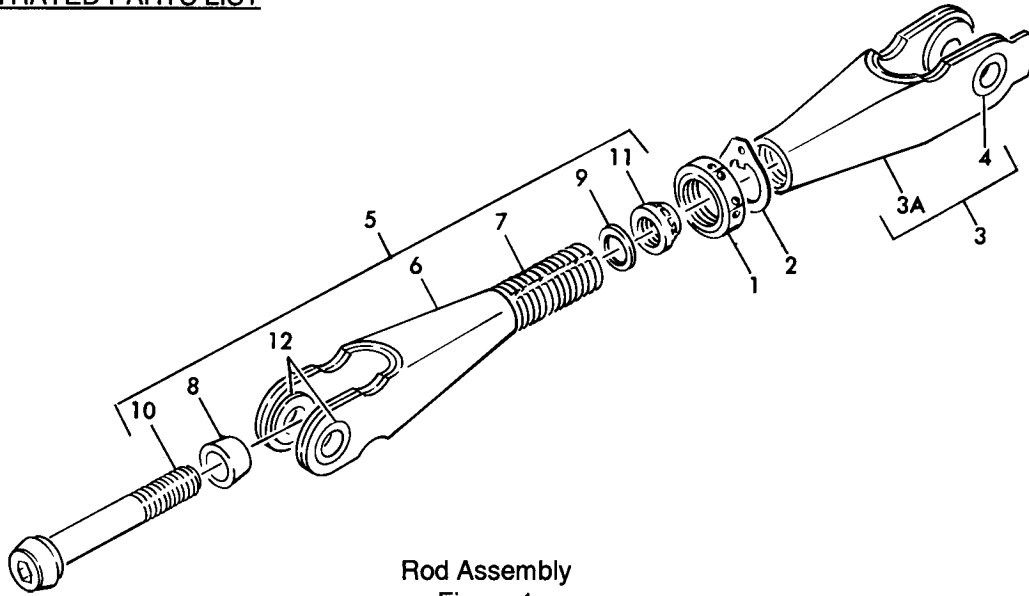
C. Replacement

- (1) Replace tube (3A) if either inner or outer tube requires replacement.
- (2) Tube assembly (3A) is a bonded assembly and must be replaced as a unit.
- (3) Tubes (6 and 7) are matched set, and if either are damaged both must be replaced.

4. ASSEMBLY

A. Standard shop practices are sufficient for assembly of this unit except as follows:

- (1) Inner tube (6) shall be easily removable from outer tube (7) prior to installation of bolt (10) and bushings (12). Tighten bolt (10) to a torque range of 220 to 360 pound-inches dry, before installation of bushing (12).
- (2) Install bushings (4 and 12) per 20-50-03.
- (3) Machine bushing 4 (NAS538B10P18) and bushings (12) (NAS538B10P18) in line to 0.6242/0.6247 inch diameter.

5. ILLUSTRATED PARTS LISTRod Assembly
Figure 1

| FIG. & ITEM NO. | PART NO. | AIRLINE PART NUMBER | NOMENCLATURE | | | | | | | USE CODE | QTY PER ASSY |
|-----------------|--------------|---------------------|-----------------------------|---|---|---|---|---|---|----------|--------------|
| | | | 1 | 2 | 3 | 4 | 5 | 6 | 7 | | |
| 1- | 69-44427-2 | | ROD ASSY - ELEVATOR CONTROL | | | | | | | A | |
| | 69-44427-3 | | ROD ASSY - ELEVATOR CONTROL | | | | | | | B | |
| 1 | 69-44429-1 | | . NUT | | | | | | | | 1 |
| 2 | NAS513-14 | | . WASHER | | | | | | | | 1 |
| 3 | 65-59667-1 | | . ROD END ASSY | | | | | | | A | 1 |
| 3 | 65-59667-8 | | . ROD END ASSY | | | | | | | B | 1 |
| 3A | *[1] | | . . BONDED TUBE ASSY | | | | | | | | 1 |
| 4 | NAS77A10-18P | | . . BUSHING | | | | | | | A | 1 |
| 4 | NAS538B10P18 | | . . BUSHING | | | | | | | B | 1 |
| 5 | 65-60582-1 | | . ROD END ASSY | | | | | | | A | 1 |
| 5 | 65-60582-6 | | . ROD END ASSY | | | | | | | B | 1 |
| 6 | 65-60582-4 | | . . TUBE | | | | | | | | 1 |
| 7 | 65-60582-5 | | . . TUBE | | | | | | | | 1 |
| 8 | 69-51890-2 | | . . SLEEVE (OPTIONAL) | | | | | | | | 1 |
| 8 | 69-51890-3 | | . . SLEEVE (PREFERRED) | | | | | | | | 1 |
| 8 | 69-51890-4 | | . . SLEEVE (OPTIONAL) | | | | | | | | 1 |
| 9 | MS20002-6 | | . . WASHER | | | | | | | | 1 |
| 10 | MS20006-64 | | . . BOLT (PREFERRED) | | | | | | | | 1 |
| 10 | MS20006-68 | | . . BOLT (OPTIONAL) | | | | | | | | 1 |
| 11 | BACN10GW6 | | . . NUT | | | | | | | | 1 |
| 12 | NAS77A10-18P | | . . BUSHING | | | | | | | A | 2 |
| 12 | NAS538B10P18 | | . . BUSHING | | | | | | | B | 2 |

*[1] NO ASSIGNED PART NUMBER