

TO: ALL HOLDERS OF NOSE GEAR GRAVEL DEFLECTOR ASSEMBLY OVERHAUL MANUAL,
 32-26-16

REVISION NO. 9, DATED NOV 1/05

HIGHLIGHTS

DESCRIPTION OF CHANGE	TOPICS AFFECTED												
	D & O	D / Assy	Cleaning	Inspect / Check	Repair	Assy	F / C	Test	T / Shooting	S / Tools	Storage	I P L	L / Overhaul
Added clarifications and updated callouts					X								

Nov 1/05

32-26-16
 HIGHLIGHTS
 Page 1 of 1

NOSE GEAR GRAVEL DEFLECTOR ASSEMBLY

32-26-16

BOEING P/N 65-76611-26

AIRLINE P/N

THE FOLLOWING DIRECTIVES APPLY TO THIS SUBJECT:

BOEING SERVICE BULLETIN	BOEING TEMPORARY REVISION	OTHER DIRECTIVES	DATE DIRECTIVE INCORPORATED INTO TEXT
		PRR 31395-7	Sep 10/70
		PRR 31395-10	Sep 10/70
32-1028		PRR 31395-9	Mar 25/73
32-1030		PRR 31555	Mar 25/73
32-1067		PRR 32196	Mar 25/73
		PRR 32478	Jul 5/76
		PRR 32496-3	Jul 5/76
		PRR 33194	Mar 5/84
32-1129		PRR 33194R	Mar 5/84
32-1246		MC 3220MK3002	Sep 5/90
32-1129, Rev. 3		PRR 33194R	Sep 1/95

LIST OF EFFECTIVE PAGES

* Indicates pages revised, added or deleted in latest revision
 F Indicates foldout pages - print one side only

PAGE	DATE	PAGE	DATE	PAGE	DATE
32-26-16		1119	Jul 1/98		
T-1	Sep 1/95	1120	Mar 25/73		
T-2	BLANK	1121	Jul 5/76		
* LEP-1	Nov 1/05	1122	Mar 25/73		
LEP-2	BLANK	1123	Sep 1/95		
T/C-1	Mar 5/84	1124	Sep 1/95		
T/C-2	BLANK	1125	Sep 1/95		
1	Mar 25/73	1126	Mar 25/73		
2	Mar 25/73	1127	Jul 1/98		
101	Mar 5/84	1128	Mar 5/84		
102	Mar 5/84	1129	Mar 5/84		
301	Mar 25/73	1130	Sep 1/95		
302	BLANK				
* 401	Nov 1/05				
* 402	Nov 1/05				
501	Mar 5/84				
502	Mar 5/84				
503	Mar 5/84				
504	BLANK				
701	Mar 25/73				
702	BLANK				
1001	Jul 1/01				
1002	BLANK				
1101	Sep 10/70				
1102	Mar 25/73				
1103	Mar 25/73				
1104	Mar 25/73				
1105	Mar 25/73				
1106	Mar 25/73				
1106A	Mar 25/73				
1106B	Mar 25/73				
1107	Mar 25/73				
1108	Mar 25/73				
1109	Mar 25/73				
1110	Mar 5/84				
1110A	Dec 25/74				
1110B	BLANK				
1111	Mar 5/84				
1112	Dec 25/74				
1113	Sep 5/90				
1114	Sep 10/70				
1115	Jul 5/76				
1116	Mar 25/73				
1117	Mar 25/73				
1118	Mar 25/73				

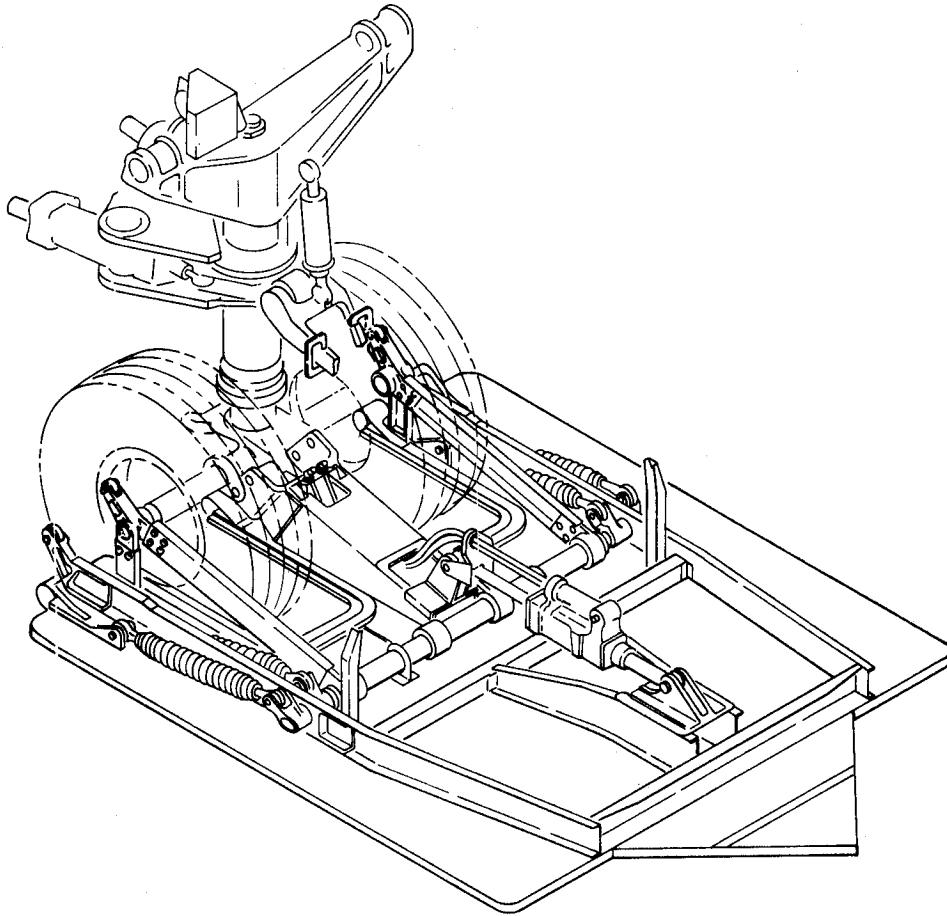
OVERHAUL MANUAL

TABLE OF CONTENTS

<u>Paragraph Title</u>	<u>Page</u>
Description and Operation	1
Disassembly	101
Cleaning.*[1]	
Inspection/Check.	301
Repair.	401
Assembly.	501
Fits and Clearances (not applicable)	
Testing	701
Trouble Shooting (not applicable)	
Storage Instructions.*[2]	
Special Tools, Fixtures, and Equipment.	1001
Illustrated Parts List.	1101

| *[1] Special instructions not required. Use standard industry practices and the information contained in 20-30-01 and 20-30-03.

| *[2] Special instructions not required. Use standard industry practices and the information contained in 20-44-02.

NOSE GEAR GRAVEL DEFLECTOR ASSEMBLY

Nose Gear Gravel Deflector Assembly
Figure 1

DESCRIPTION AND OPERATION

1. Description

- A. The nose gear gravel deflector assembly consists of a shield which pivots on a tube supported on channel section beams mounted on top of the shield.

BOEING 
COMMERCIAL JET
OVERHAUL MANUAL

65-76611

- B. The deflector shield consists of a plywood sheet covered on the lower surface with corrosion resistant steel plates. Two lengthwise channel beams on the upper surface reinforce the shield. Sheet metal airfoils on the forward edge of the shield provide aerodynamic smoothness. Two sets of rollers on the leading edge provide guidance on respective sets of tracks in the wheel well of the airplane when nose gear is retracted.
- C. Brackets and clevises on top of the shield provide attachments for the hydraulic power control unit and four tension spring assemblies.

2. Operation

- A. The nose gear gravel deflector raises and lowers with the nose gear assembly. The hydraulic power control unit maintains the deflector in a position parallel with the wing chord during nose gear transit. The four tension spring assemblies replace the function of the power control unit during any manual operation of the nose gear.

3. Leading Particulars

Length -- 62 inches
Height -- 9 inches
Width -- 44 inches

OVERHAUL MANUAL

DISASSEMBLY

1. If applicable, remove gravel deflector from nose gear (Fig. 1101).
 - A. Remove fasteners (303 thru 309).
 - B. Remove parts (310 thru 313) or quick-release pin (313).
 - C. Remove tube (314) from axle. Do not disassemble tube (314) unless repair or replacement is necessary.
 - D. Move gravel deflector aft and up and remove wheels (Ref 32-26-11).
 - E. If used, remove retainer rings (319A) and antirotation hardware from torsion link pin (75).
 - F. As applicable, remove spacers (319C), shaft (318), shims (319) and torsion link pin (319B).
 - G. Remove spacers (320) from axle.
2. Remove gravel deflector power control unit.
 - A. Remove hoses (272 and 273).
 - B. Disassemble parts (274 thru 279).
 - C. Remove parts (288 thru 298, 299 thru 301, and 301A thru 301L) and actuator (302).
 - D. Disassemble parts (280 thru 287).
3. Disassemble actuator (320, 65-44660-1, -2) (Fig. 1101).
 - A. Disassemble parts (302A thru 302C) and remove crank (302D).

NOTE: Do not remove blocks (302E, 302U) unless repair or replacement is necessary.
 - B. Remove caps (320H, 302R).
 - C. Refer to 32-26-18 for overhaul of power control unit actuator 65-44660-3, -4, and to appropriate vendor instructions for overhaul of actuator (302V).

OVERHAUL MANUAL

4. Disassemble gravel deflector (Fig. 1101).

- A. Disassemble parts (1 thru 9) to release springs (10), using Tension Spring Expander F80163-1 to expand spring for bolt removal.

CAUTION: SPRING IS UNDER A TENSION LOAD OF APPROXIMATELY 350 POUNDS.

- B. Disassemble parts (17 thru 19) and remove bearings (22).
C. Disassemble parts (23 thru 29) and release roller support fittings (30 and 31).
D. Disassemble parts (32 thru 40) and release leading edges (41 thru 44).

NOTE: Do not disassemble parts (45 thru 51) unless repair or replacement is necessary.

- E. Disassemble parts (52 thru 60) and release channels (61).

NOTE: Do not remove parts (62 thru 122) unless repair or replacement is necessary.

- F. Disassemble parts (124 thru 133, and 135 thru 140).

- G. Disassemble parts (142 thru 151, and 153 thru 158).

NOTE: Do not remove parts (159 thru 166, 168, 169) unless repair or replacement is necessary.

- H. Remove bolts (170) and release center bracket (167).

NOTE: Do not disassemble parts (171 thru 245) unless repair or replacement is necessary.

- I. Disassemble parts (246 thru 249) and release leading edge (250).

- J. Disassemble parts (252, 253, 271) and release rubber seals (254, 255) and seal retainers (256).

NOTE: Do not disassemble parts (257 thru 270) unless repair or replacement is necessary.

BOEING 
COMMERCIAL JET
OVERHAUL MANUAL

INSPECTION/CHECK

1. Visual Check (See figure 1101.)
 - A. Examine all metal parts for cracks, burrs, corrosion, and any other damage, using strong light and minimum of 10-power magnification.
 - B. Check all threads for cross-threading and stripping.
 - C. Check finished surfaces for blisters, chipping or flaking.
 - D. Check hose guides (283, 287, 298), rubber seals (254, 255), and hose assemblies (272, 273) for kinks, dents, cracks and damage.
 - E. Check bearings (22) for excessive axial and radial play.
2. Special Check
 - A. If visual examination discloses evidence of defects in any of listed parts, perform following checks: (Refer to 20-20-01, Magnetic Particle Inspection and 20-20-02, Penetrant Methods of Inspection.)
 - (1) Magnetic particle check -- spring (16, 301F), shaft (122), tube (166), crank (302D), tube assembly (314), shaft (318), torsion link pin (319B).
 - (2) Fluorescent penetrant check -- terminals (14, 15), fitting (30, 31), bushings (80), fitting (82), channel (83), stop (88), bushings (99, 188Y), fitting (101), bracket (106), lever (112, 113, 114, 115), collar (134, 152), fitting (135, 153), bracket (162), fitting (178, 181), weld assembly (188), clevis (195, 301E, 301L), supports (204, 205).
 - B. Check spring assemblies (10) in accordance with figure 2.

Index No. Fig. 1101	Approximate Free Length (inches)	Test Length (inches)*	Load Limit (pounds)
10	13.30	15.00 17.90	329.5-382.0 693.0-808.5

*Dimension is measured between terminal bore centerlines.

REPAIR

1. Repair

- A. Repair small defects by standard industry practices.
- B. Refer to SOPM 20-10-01 and 20-10-02 and CMM 32-00-05 for repair of high strength steel parts.

2. Refinish (Fig. 1101)

NOTE: Refer to SOPM 20-30-02 for stripping of protective finishes. Refer to SOPM 20-41-01 for explanation of F and SRF finish codes.

- A. Sleeves (5), terminals (14, 15), spring (16, 301F), lever (112, 113, 114, 115), crank (302D), bushing (316A), shaft (318), spacer (320) -- Passivate (F-8.07) all over. Material: 17-4PH CRES, 180-200 ksi.
- B. Spring assembly (13) -- Apply PT201 resin coating to all surfaces, 0.0015-0.0020 inch thick. Cure coating at 300°F for 1 hour.
- C. Parts (30, 31, 49, 50, 51, 61, 70, 71, 73, 82, 83, 89, 90, 94, 101, 102, 134 thru 139, 152 thru 157, 162, 175, 176, 178, 181, 188Z, 195, 204, 205, 209, 217 thru 220, 227, 228, 238, 245, 268, 269) -- Chemical treat or chromic acid anodize and apply BMS 10-11, Type 1 primer (F-18.05). Material: Al Alloy.
- D. Stops (69, 88), weld assembly (188), plates (188A, 188B, 188C), angles (188H, 188I), fittings (188J, 188K) -- Passivate (F-8.07) all over then apply BMS 10-11, Type 1 primer (SRF-12.205). Material: 17-7PH CRES, 180-200 ksi.
- E. Bracket (106) -- Chromic acid anodize (F-2.20) all over. Material: Al Alloy.
- F. Shaft (122) -- Passivate (F-8.07) all over then apply BMS 10-11, Type 1 primer (SRF-12.205) on ID only. Material: 17-4PH CRES, 180-200 ksi.
- G. Fitting (135) (65-85654-1, -2) -- Chemical treat or chromic acid anodize and apply BMS 10-11, Type 1 primer (F-18.05) all over but not in holes or bores. Material: Al Alloy.
- H. Tube (166) -- Passivate (F-17.25, which replaces F-17.09) all over then apply MIL-C-11796 Class 1 corrosion preventive compound (F-1.73) on ID, and apply BMS 10-11, Type 1 primer (SRF-12.205) to nonfunctional surfaces of OD only. Material: 17-7PH or 17-4PH CRES, 180-200 ksi.

- I. Plate (177A) -- Chemical treat or chromic acid anodize and apply BMS 10-11, Type 1 primer (F-18.05) all over then apply BMS 10-11, Type 2 enamel (SRF-12.63). Material: Al alloy.
 - J. Bracket (185, 296, 297), bushing (295) -- Chromic acid anodize (F-17.02). Material: Al Alloy.
 - K. Filler (188E, 188F, 188G) -- Anodize and apply BMS 10-11, Type 1 primer (SRF-2.19) all over. Material: Al Alloy.
 - L. Pin (319B) -- Chrome plate (F-15.04) OD surfaces. Cadmium-titanium plate (F-15.01) external surfaces not chrome plated. Cadmium-titanium plate (F-15.01) and apply BMS 10-11, Type 1 primer (SRF- 12.206) on internal surfaces (cadmium plate throw-in allowed). Material: 4340M steel, 270-300 ksi.
 - M. Bracket assembly (167) -- Apply BMS 10-11, Type 1 primer (SRF-12.206) and BMS 10-11, Type 2 enamel (SRF-12.63) but not on mating surfaces.
 - N. Tube assembly (314) -- Passivate (F-8.07) all over. Apply BMS 10-11, Type 1 primer, (SRF-12.206) on small OD surface only and MIL-C-11796 Class 1 corrosion preventive compound (F-1.73) on ID only.
 - O. Leading edges (41, 42, 43, 44, 250), fillers (58, 59, 60, 262), plates (210, 232, 258), angle (226), straps (240, 244), retainer (256) -- Chemical treat or chromic acid anodize and apply BMS 10-11, Type 1 primer (F-18.05) all over. Material: Al Alloy.
3. Replacement (Fig. 1101)
- A. Replace all cotter pins.
 - B. Replace all unserviceable or irreparable parts.
 - C. Bearings (11, 12) -- Install replacements by the method for sintered bearings (SOPM 20-50-03).
 - D. Bushings (80) -- Install replacement bushings by the shrink fit method (SOPM 20-50-03) with MIL-C-11796, class 3 corrosion preventive compound.
 - E. Bushings (180, 194) -- Install replacement bushings by the shrink fit method (SOPM 20-50-03).
 - F. Lube fittings (20, 81, 100, 135D, 153D) -- Install replacement lube fittings per CMM 32-00-03.

OVERHAUL MANUAL

ASSEMBLY

1. Materials

NOTE: Equivalent materials may be used.

A. Enamel -- BMS 10-11, type 2 (Ref 20-60-02)

B. Grease -- BMS 3-24 (Ref 20-60-03)

2. Assemble gravel deflector (Fig. 1101)

A. Install rubber seals (254, 255) and seal retainers (256) on skid (251) with bolts and nut (252, 253, 271).

B. Attach leading edge (250) on skid (251) with bolts (248, 249), washers (247) and nuts (271, 246).

C. Install center bracket (167) on collar fittings (178) with bolts (170, 170A or 170B).

D. Assemble pad (158), spacer (157), angle (156), channel (155), bearing (153F), fitting (153), bolts (153C, 151A, 151, 149, 148), washers (153B, 147, 145, 144) and nuts (153A, 143, 142).

E. Install fittings (153) (with attached parts) on channel (154) with bolts (151 or 151A), washers (147) and nuts (143).

F. Attach channel (154) (with attached parts) on collar (152) with bolts (150), washers (146) and nuts (143).

G. Assemble pad (140), spacer (139), angle (138), channel (137), bearing (135F), fitting (135), bolts (135C, 133A, 133, 131, 130), washers (135B, 129, 127, 126) and nuts (135A, 125, 124).

H. Install fitting (135) (with attached parts) on channel (136) with bolts (133 or 133A), washers (129) and nuts (125).

I. Install channel (136) (with attached parts) on collar (134) with bolts (132), washers (128) and nuts (125).

J. Install channels (61), spacers (60) and fillers (59, 58) on channels (84, 65) with bolts (57, 56), washers (55, 54) and nuts (53, 52).

OVERHAUL MANUAL

- K. Attach leading edges (44 thru 41) on skid (251) with bolts (40, 37, 36, 35), washers (39, 34, 33) and nuts (38, 32).
- L. Attach roller support fittings (31, 30) and shims (29) on channels (65, 84) with bolts (28, 25), washers (27, 24) and nuts (26, 23).
- M. Position bearings (22) in roller support fittings (30, 31). Secure with bolts (19), washers (18) and nuts (17).
- N. Insert sleeves (5) in terminals (15). Position springs (10) on levers (112 thru 114) and brackets (104), using Spring Expander F80163-1 to expand spring for bolt installation. Secure with fasteners (9 thru 6, 4 thru 1).

NOTE: Springs (10) may be left disconnected at brackets (104), and attached during installation of gravel deflector on nose gear. If so, install fasteners (9, 8, 7, 4, 3, 2) finger-tight, and secure with cotter pins (6, 1).

- O. If required, touch up gravel deflector with enamel, BMS 10-11, type 2, except on springs (16) and bearings (22).

3. Assemble actuator (302, Fig. 1101).

- A. Install caps (302R, 302H) on actuator (302V).
- B. Install crank (302D) on actuator shaft with bolt (302C), washer (302B), and nut (302A). Tighten nut (302A) to 90-100 lb-in.

4. Install hydraulic power control unit (Fig. 1101)

- A. Position hose guides (287, 283) on cutouts of center bracket (167). Secure with screws (286, 282), washers (285, 281) and nuts (284, 280).
- B. Position power control unit (302) on lugs of gravel deflector. Slide hose guide (298) on rod of control unit. Position brackets (297, 296) on hose guide (298) and align larger bores with those in center bracket lugs.
- C. Attach brackets (297, 296) on hose guide (298) with bolts (294, 293), washers (292) and nuts (291).
- D. Attach power control unit on gravel deflector lugs with bolts (301, 290), washers (300, 289) and nuts (299, 288). Tighten nuts to 300-350 lb-in.

OVERHAUL MANUAL

- E. Install elbows (279, 276) on center bracket (167). Secure with washers (278, 275) and nuts (277, 274).
- F. Install hoses (273 and 272).
- 5. If applicable, install gravel deflector with attached parts to nose gear assembly (Fig. 1101).
 - A. Slide spacers (320) on nose gear axle.
 - B. On units reworked per SB 32-1129, and units using spacers (319C), apply liberal coating of grease BMS 3-24 on ID of bushings in torsion link lugs of shock strut inner cylinder. Coat torsion link pin (319B) with grease BMS 3-24 and install in torsion link lugs. Install spacer (319C) over each end of pin (319B), then install shaft (318).
 - C. On units not reworked per SB 32-1129, install torsion link pin (319B) and secure with retainer rings (319A). Insert shaft (318) into lower torsion link pin (319B) using shims (319) to reduce play between pin and shaft to 0.005 inch maximum. Keep shims clear of center bolt, NAS1105-30.
 - D. Install nose gear wheels per 32-26-11. Position gravel deflector on nose gear and align bores in center bracket (167) with those in spacers (320) and in shaft (318), install bolts (307, 305), washers (309, 308, 306, 304) and nuts (303).
 - E. Insert tube (314) thru side brace fittings (135, 153) and nose gear axle. Install quick-release pin (313) or bolt (313), washer (312), nut (311) and cotter pin (310).
 - F. If applicable, secure lower torsion link pin and inserted shaft (318) with antirotation hardware (NAS1105-30 bolt, AN960-516 washer and BACN10JC5 nut).
 - G. Lockwire bolts (307) to lugs of center bracket (167).

BOEING 
COMMERCIAL JET
OVERHAUL MANUAL

TESTING

1. Test Equipment
 - A. Hydraulic test stand capable of providing controlled hydraulic pressure to 3000 psi.
2. Functional Test
 - A. Conduct test at 70 to 80°F using hydraulic fluid, BMS 3-11.
 - B. With actuator retracted, apply pressure of 3000 psi to bottom port (top port open) and hold for 2 minutes. Check that actuator extends and that leakage at open port does not exceed 25cc per minute. No other external leakage is permitted.
 - C. With actuator extended, apply pressure of 3000 psi to top port (bottom port open) and hold for 2 minutes. Check that actuator retracts and that leakage at open port does not exceed 25cc per minute. No other leakage is permitted.
 - D. After testing, partially fill unit with hydraulic fluid, BMS 3-11. Cap ports and place actuator in retracted position.

SPECIAL TOOLS, FIXTURES AND EQUIPMENT

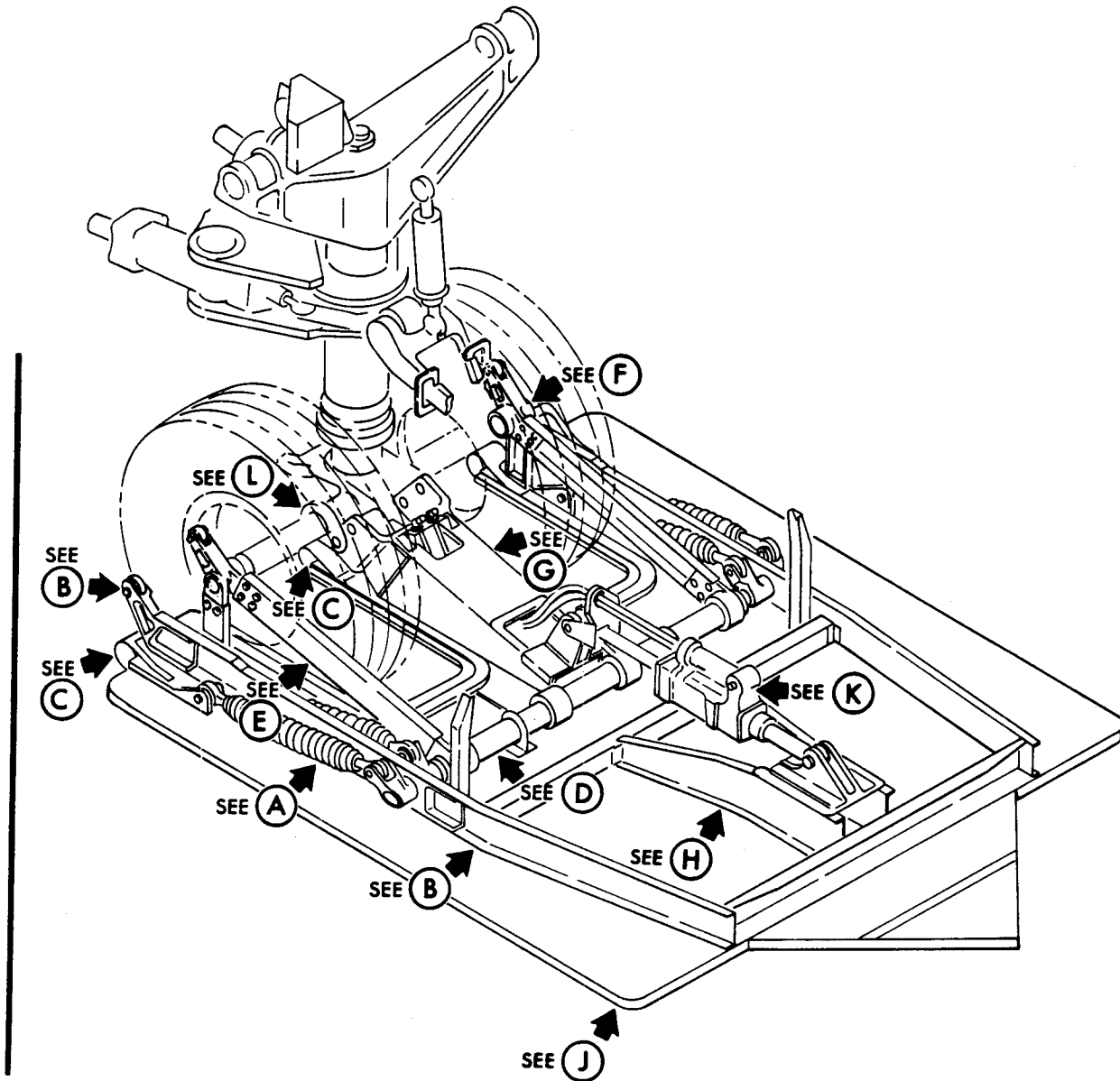
NOTE: Equivalent substitutes can be used.

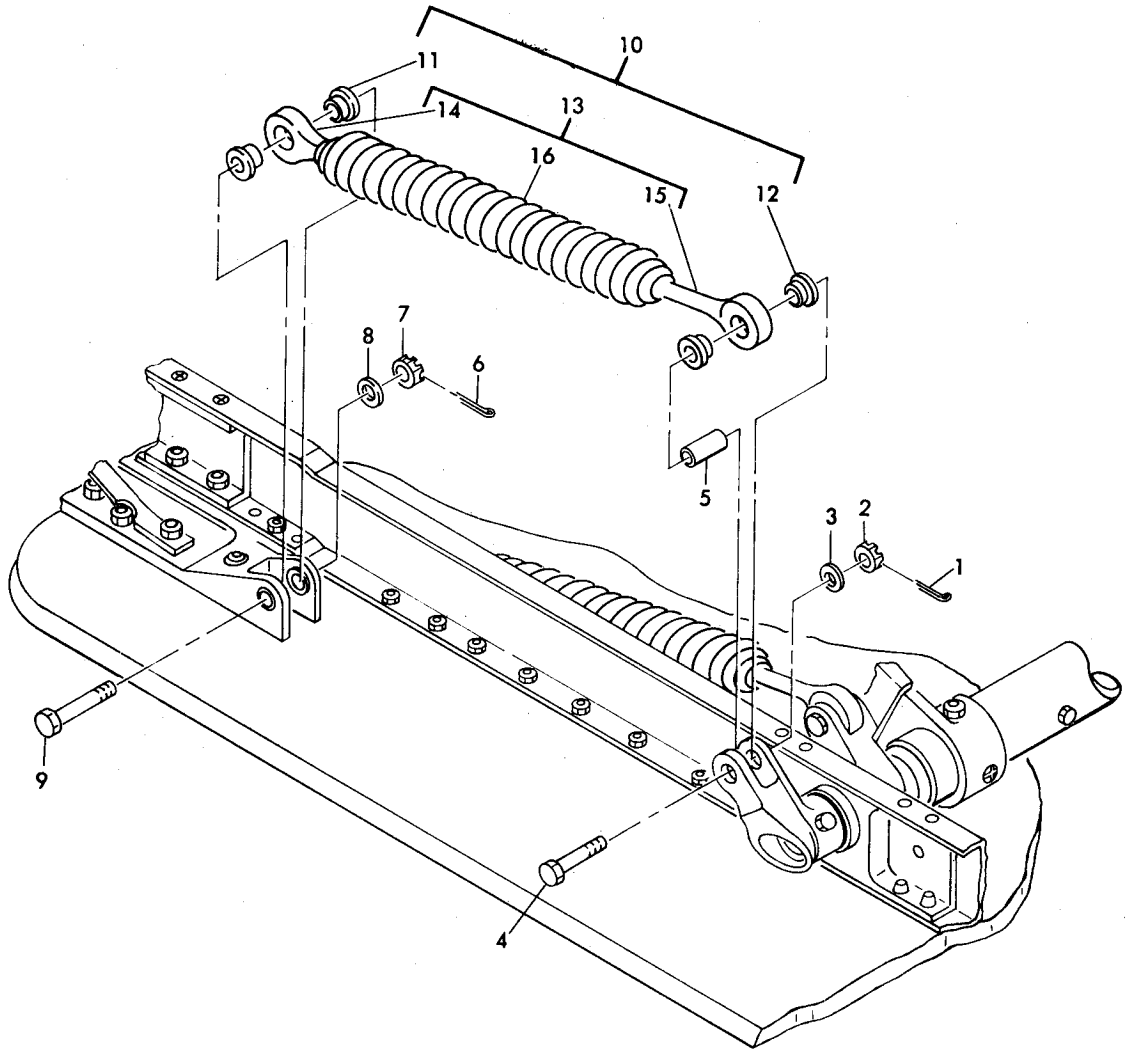
1. F80163-1 -- Tension Spring Expander Assembly

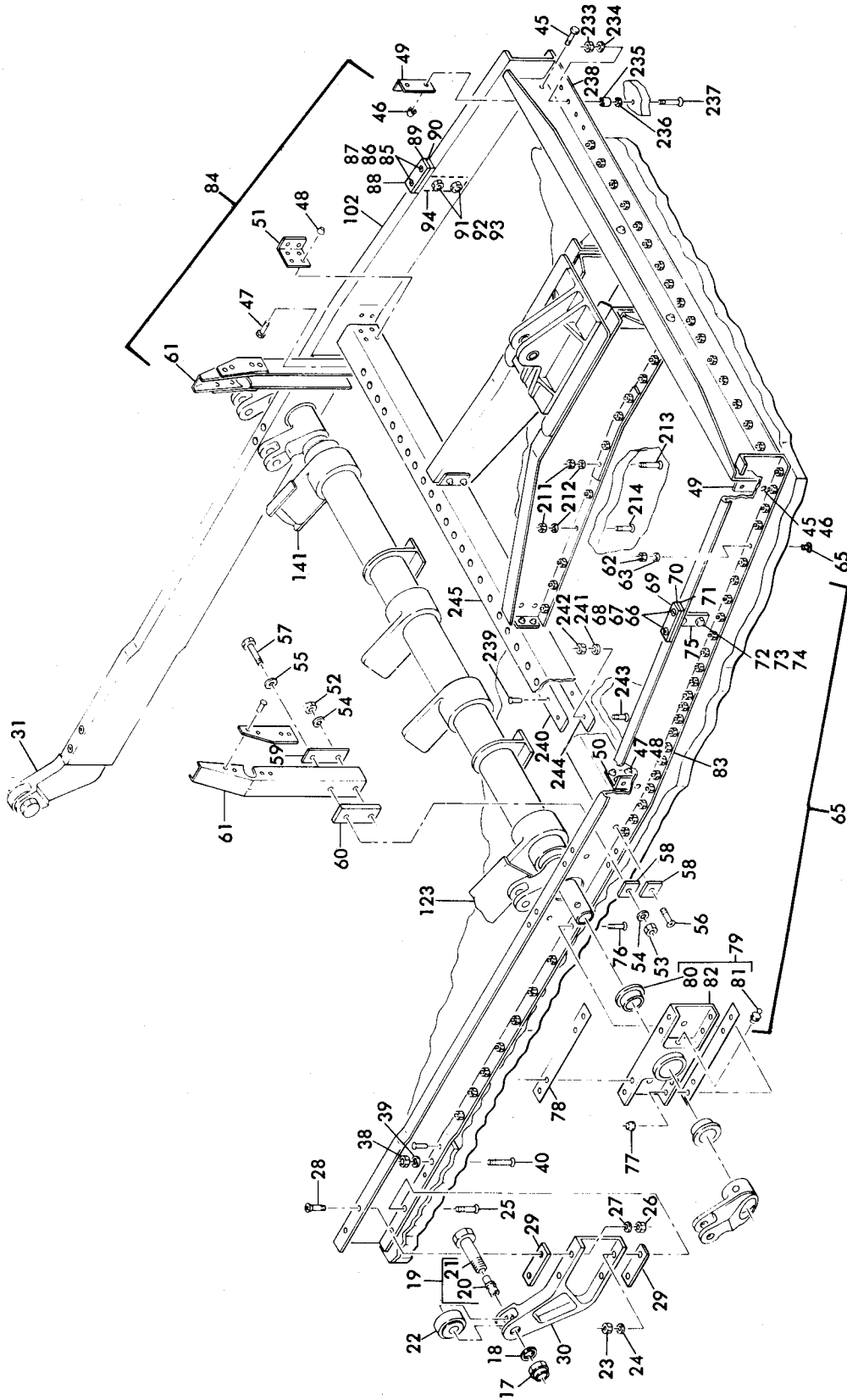
BOEING 
COMMERCIAL JET
OVERHAUL MANUAL

ILLUSTRATED PARTS LIST

THIS PAGE
INTENTIONALLY
LEFT BLANK

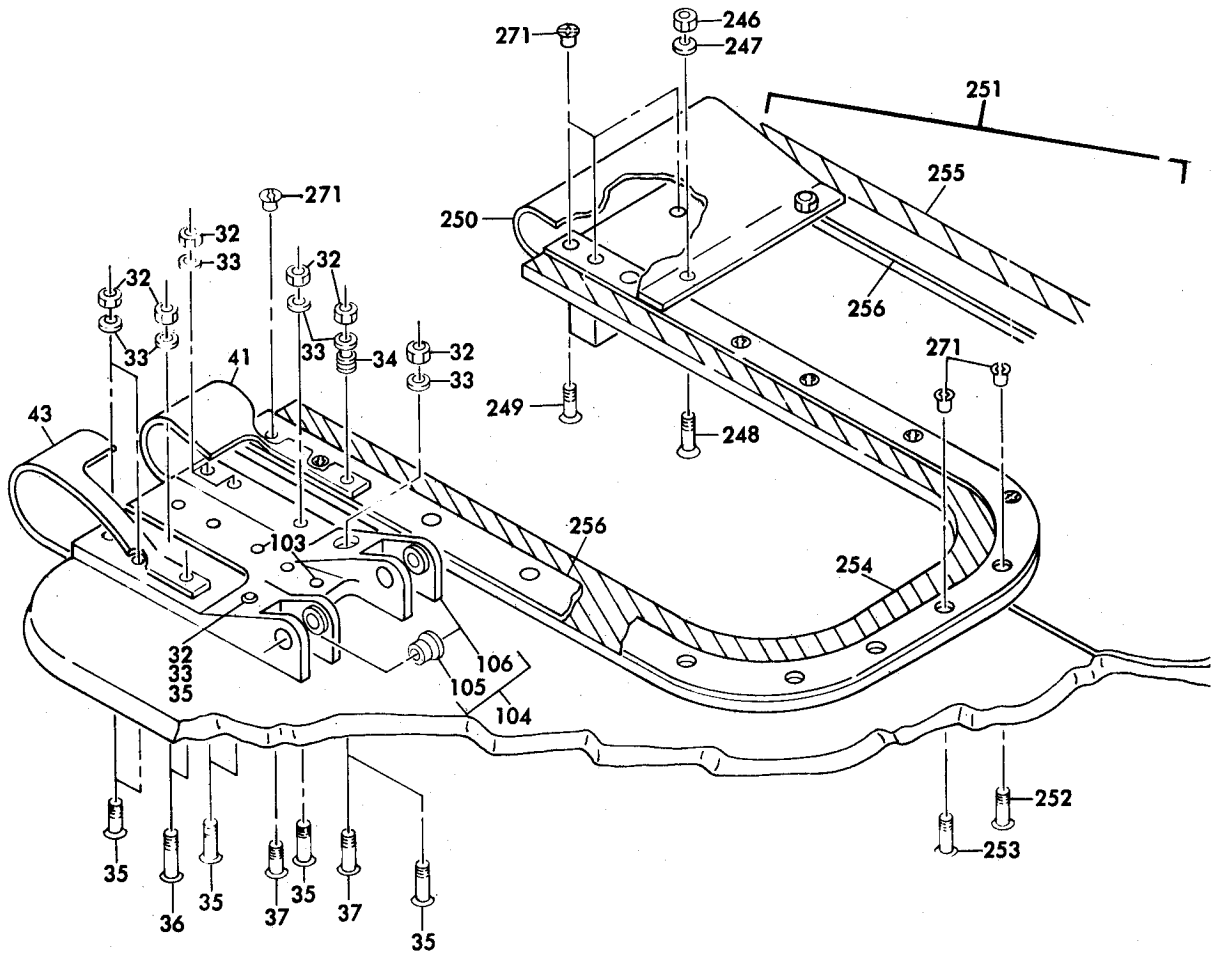




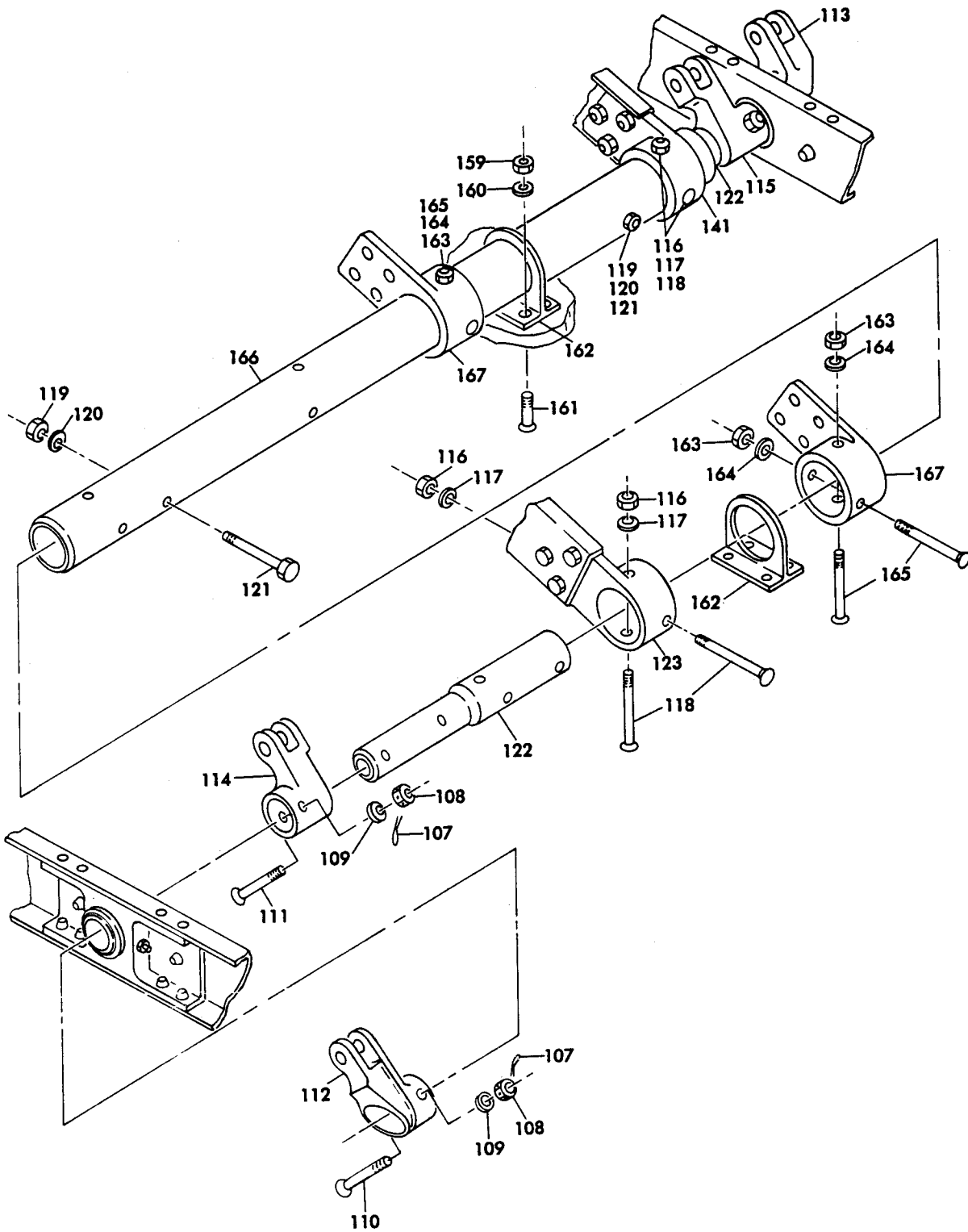


(B)

Nose Gear Gravel Deflector Assembly
Figure 1101 (Sheet 3)



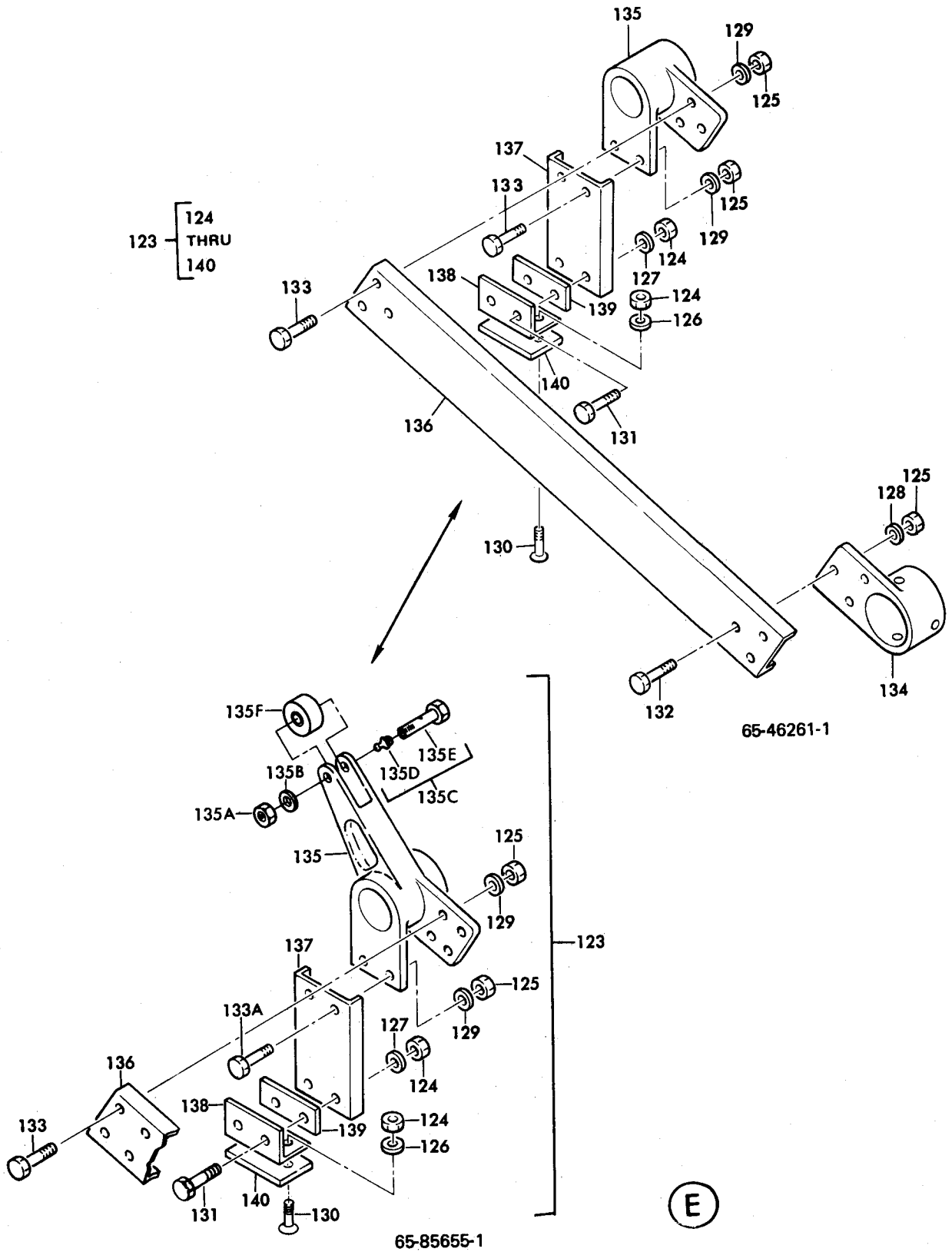
(C)



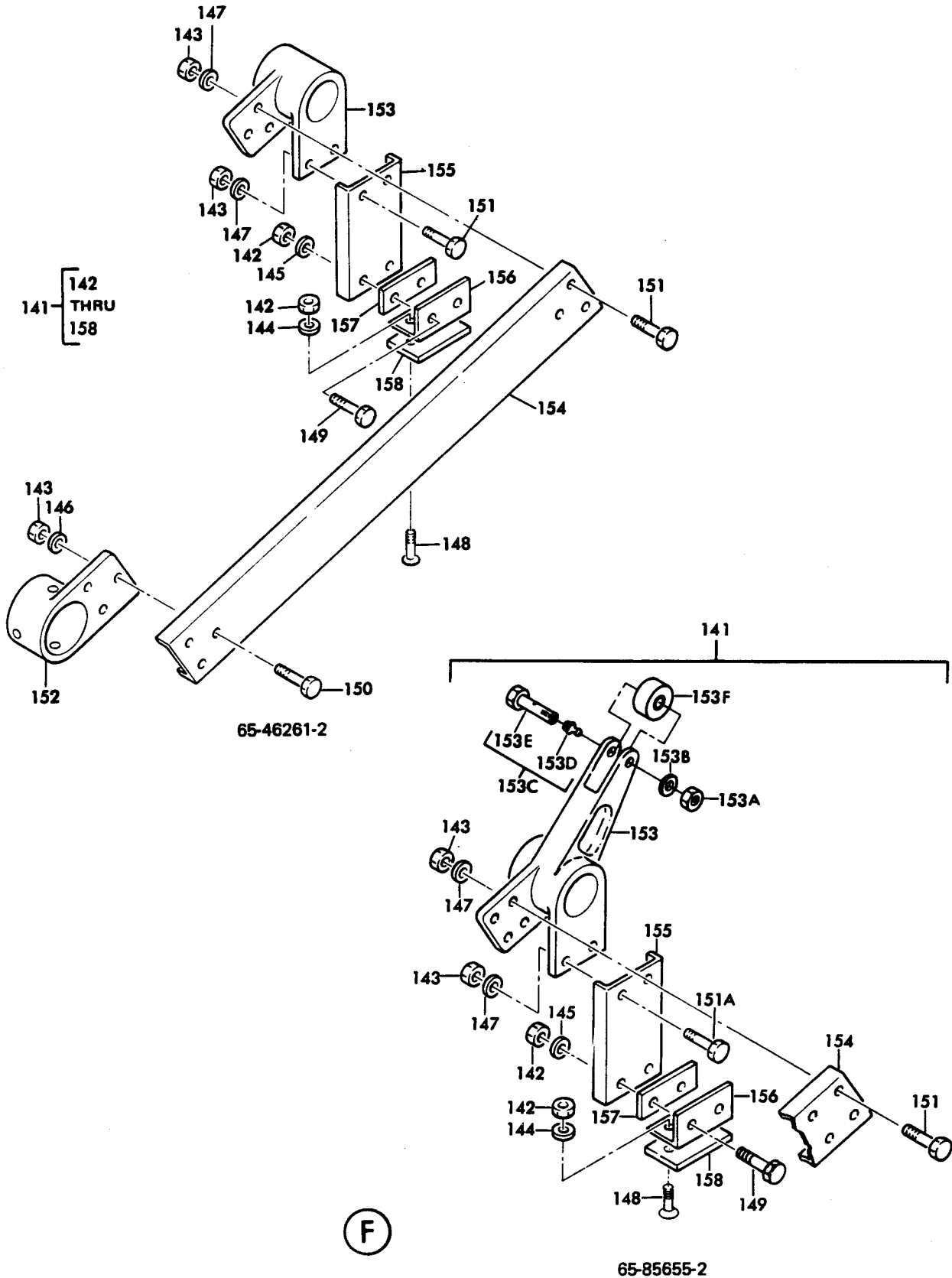
(D)

Nose Gear Gravel Deflector Assembly
 Figure 1101 (Sheet 5)

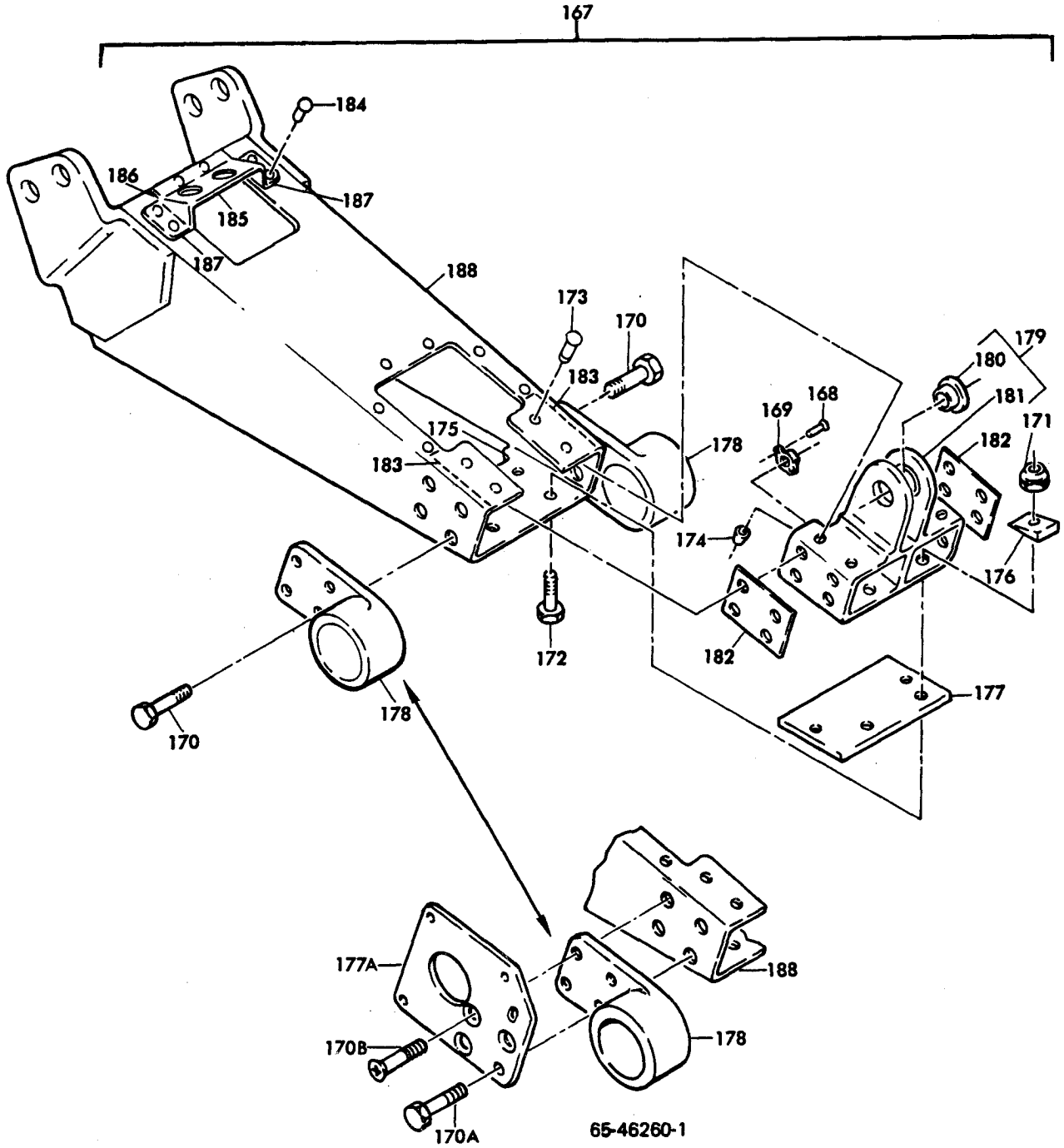
Mar 25/73



Nose Gear Gravel Deflector Assembly
Figure 1101 (Sheet 6)



Nose Gear Gravel Deflector Assembly
 Figure 1101 (Sheet 6A)

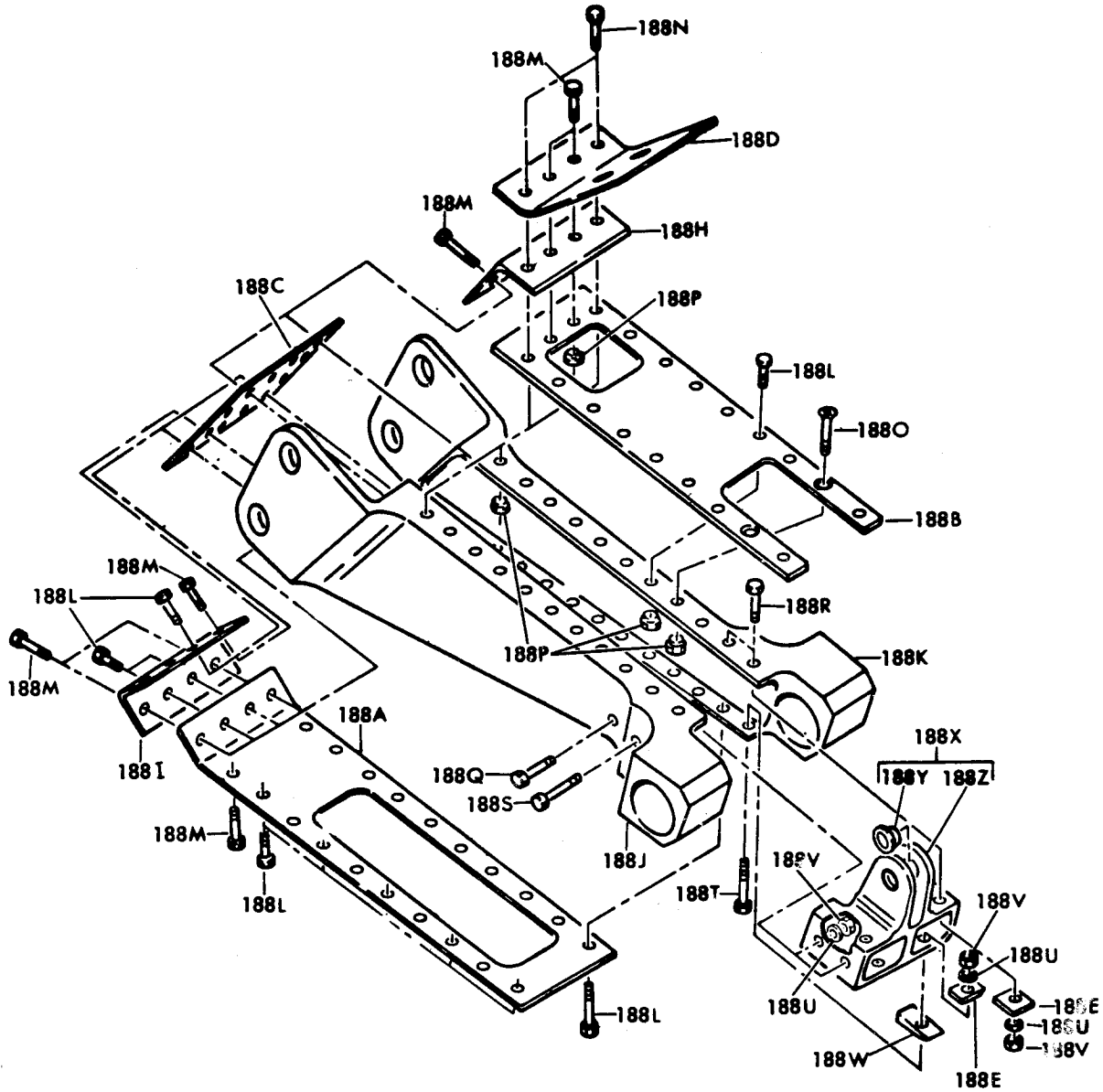


65-46260-1, -7



Nose Gear Gravel Deflector Assembly
Figure 1101 (Sheet 7)

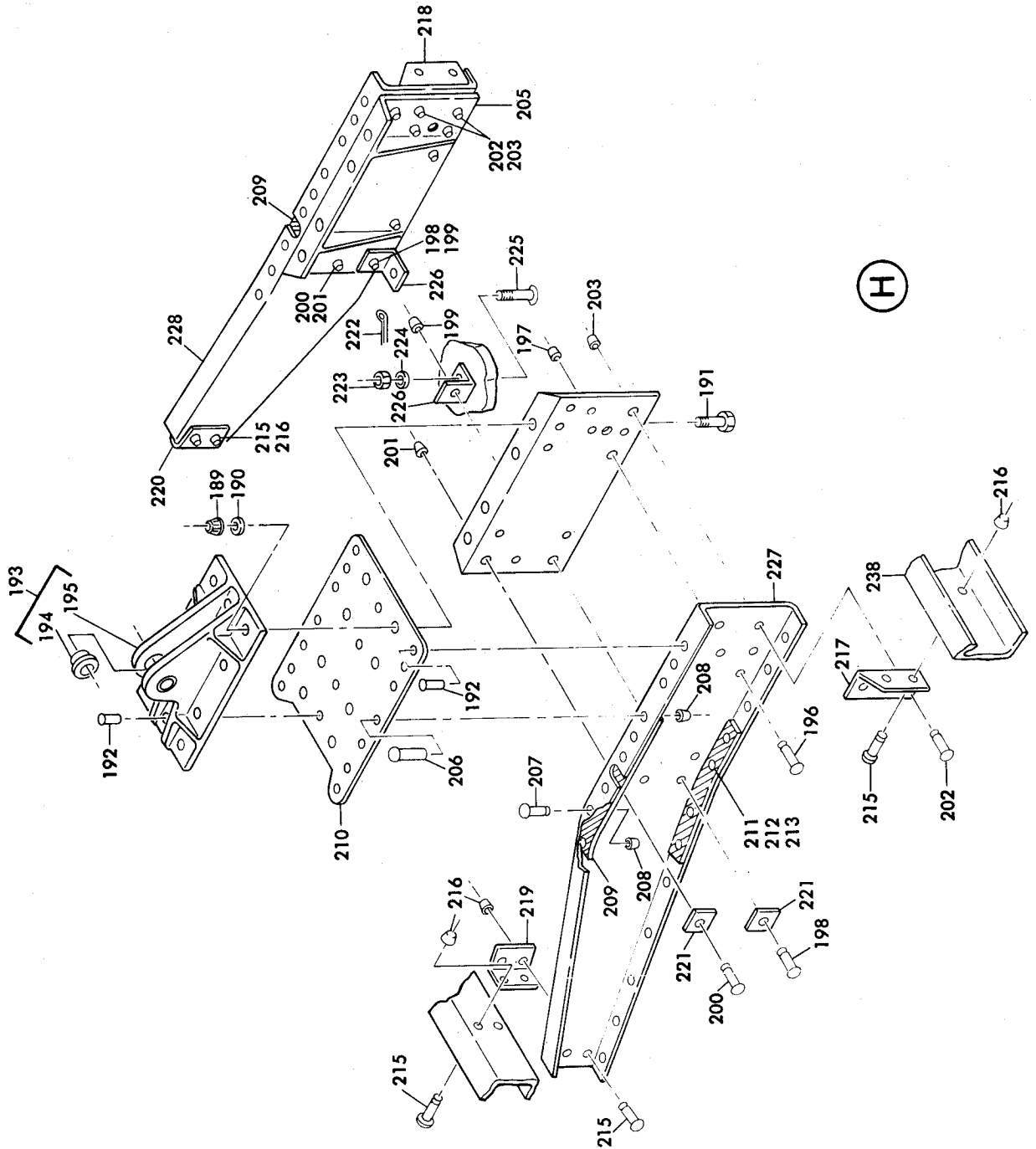
167



65-82752-1

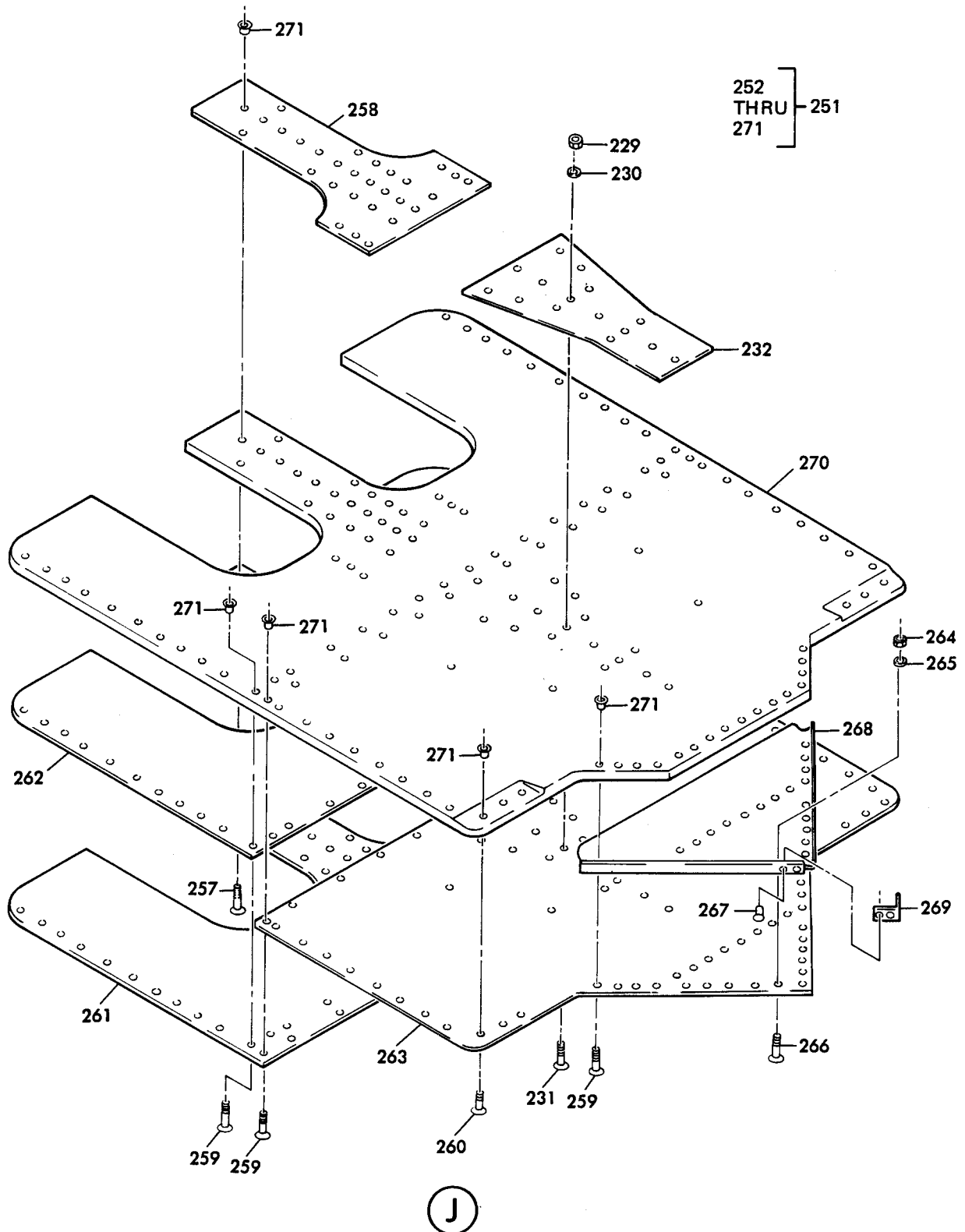


Nose Gear Gravel Deflector Assembly
Figure 1101 (Sheet 7A)

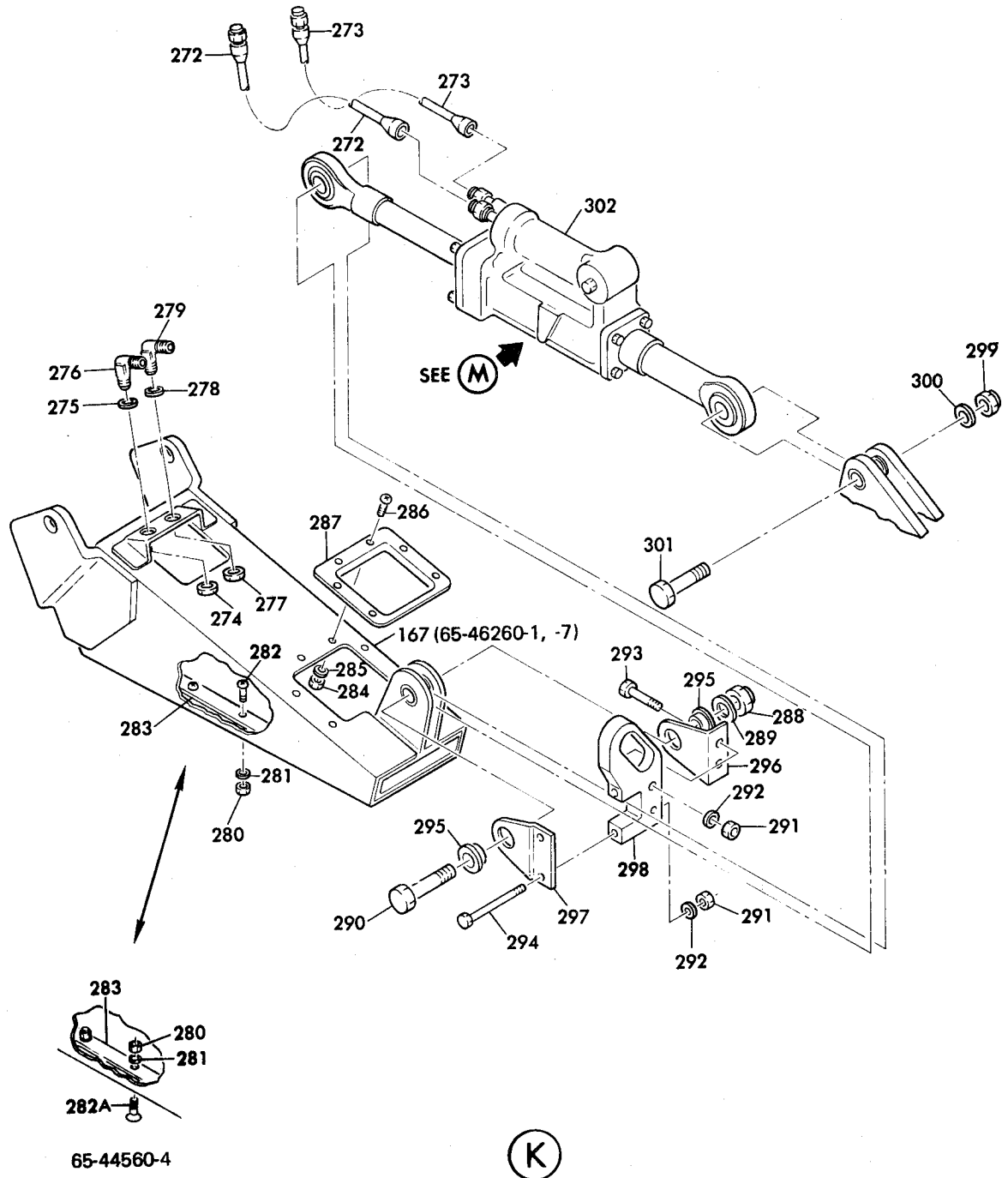


Nose Gear Gravel Deflector Assembly
Figure 1101 (Sheet 8)

OVERHAUL MANUAL

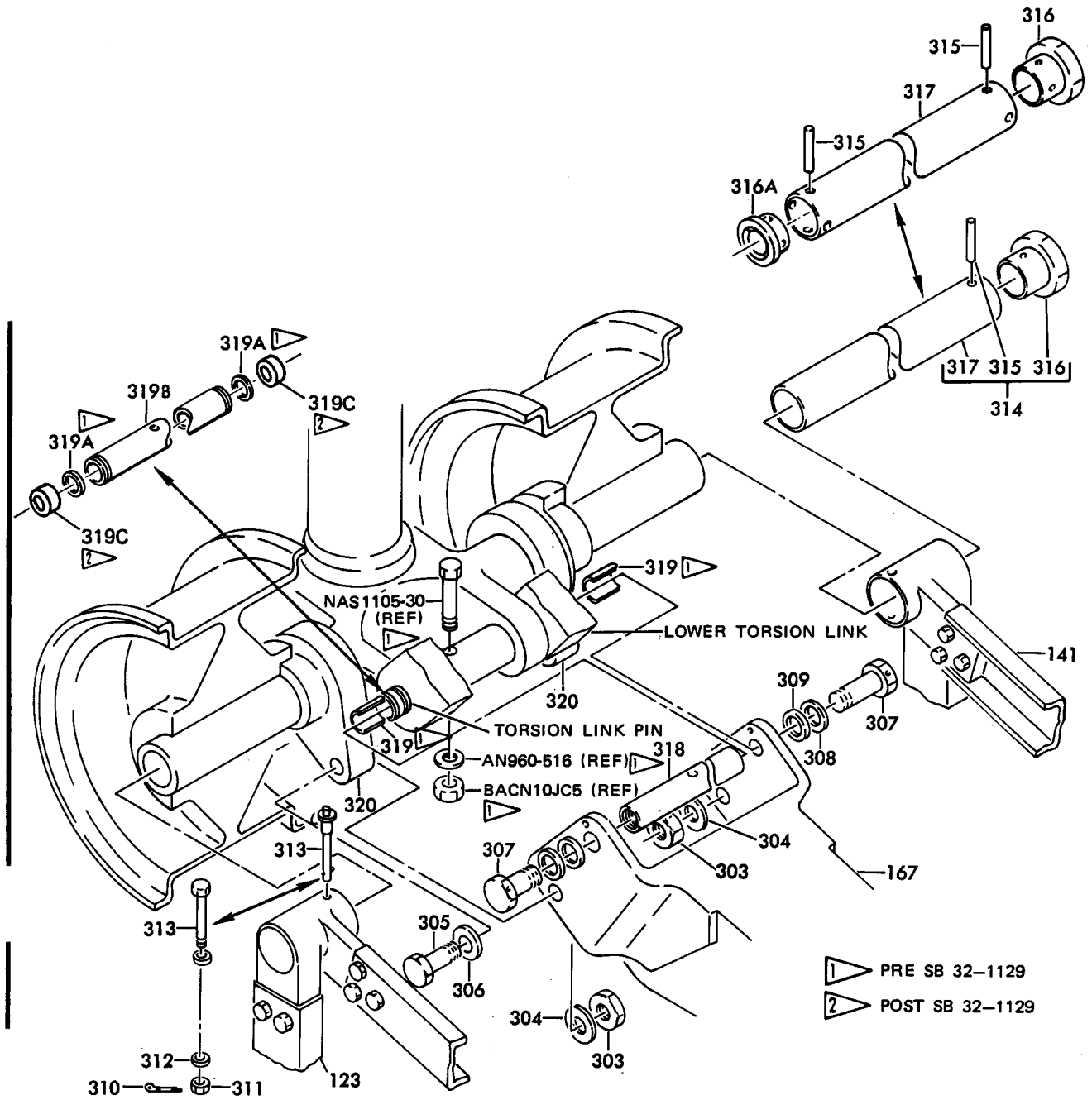


Nose Gear Gravel Deflector Assembly
Figure 1101 (Sheet 9)

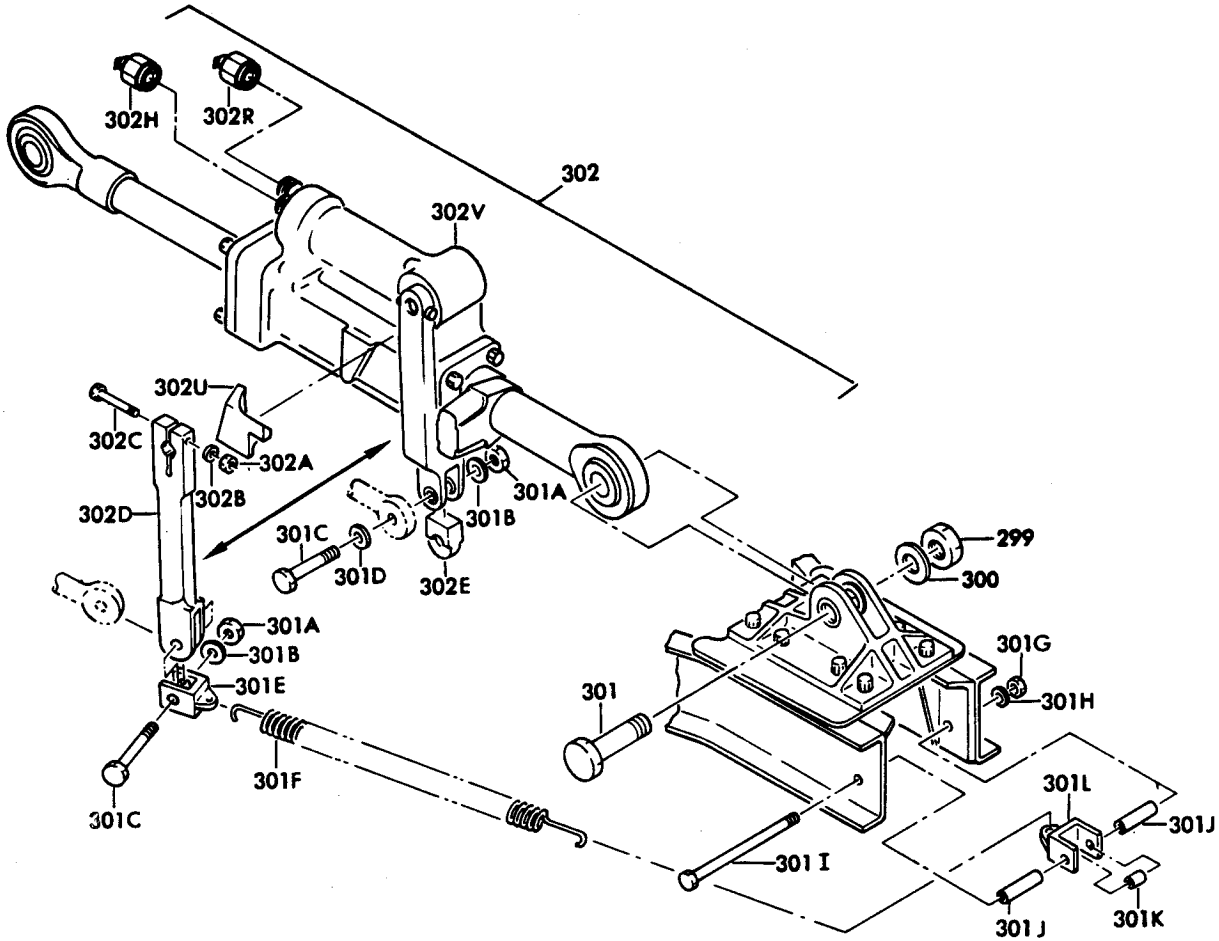


Nose Gear Gravel Deflector Assembly
Figure 1101 (Sheet 10)

Dec 25/74



(L)



65-44660-1, -2

nose Gear Gravel Deflector Assembly
Figure 1101 (Sheet 12)

OVERHAUL MANUAL

FIG. & ITEM NO.	PART NO.	AIRLINE PART NUMBER	N O M E N C L A T U R E							USE CODE	QTY PER ASSY
			1	2	3	4	5	6	7		
1101-	65-76611-26		NOSE GEAR GRAVEL DEFLECTOR ASSEMBLY								
			*[10]								
1	MS24665-153		. PIN, COTTER								4
2	BACN10JD104		. NUT, CASTELLATED								4
3	AN960C416L		. WASHER								4
4	BACB30LJ4DU22		. BOLT								4
5	69-60119-1		. SLEEVE								4
6	MS24665-153		. PIN, COTTER								4
7	BACN10JD105AU		. NUT								4
8	AN960C516L		. WASHER								4
9	BACB30LJ5DU30		. BOLT								4
10	69-60089-1		. SPRING ASSEMBLY								4
11	BACB10D15F		. . BEARING, SINTERED								2
12	BACB10D31F		. . BEARING, SINTERED								2
13	69-60089-2		. . SPRING ASSEMBLY								1
14	69-60088-1		. . . TERMINAL								1
15	69-60088-2		. . . TERMINAL								1
16	69-60089-3		. . . SPRING								1
17	BACN10JC6		. NUT, SELF-LOCKING								2
18	AN960D616		. WASHER								2
19	69-60109-1		. BOLT ASSEMBLY								2
20	1645B		. . FITTING, LUBRICATOR, V95879								1
21	69-60109-2		. . BOLT								1
22	BACB10BP06CP		. BEARING								2
23	BACN10JC4		. NUT, SELF-LOCKING								4
24	AN960D416		. WASHER								4
25	BACB30LU4-24		. BOLT								4
26	BACN10JC4		. NUT, SELF-LOCKING								4
27	AN960D416		. WASHER								4
28	BACB3ONE6-6		. BOLT								4
29	BACS4OR8E20F		. SHIM, LAMINATED								AR
30	69-60108-1		. FITTING, ROLLER SUPPORT								1
31	69-60108-2		. FITTING, ROLLER SUPPORT								1
32	BACN10JC3		. NUT, SELF-LOCKING								18
33	AN960D10		. WASHER								18
34	AN970D10		. WASHER								6
35	BACB30LU3-14		. BOLT								14
36	BACB30LU3-17		. BOLT								2
37	BACB30LU3-12		. BOLT								2
38	BACN10JC4		. NUT, SELF-LOCKING								2

BOEING 
COMMERCIAL JET
OVERHAUL MANUAL

65-76611

FIG. & ITEM NO.	PART NO.	AIRLINE PART NUMBER	N O M E N C L A T U R E							USE CODE	QTY PER ASSY
			1	2	3	4	5	6	7		
1101											
39	AN960D416										2
40	BACB30LU4-16										2
41	65-76611-17										1
42	65-76611-18										1
43	65-76611-19										1
44	65-76611-20										1
45	BACB30FM6-3										8
46	BACC30M6										8
47	BACB30FM6-3										12
48	BACC30M6										12
49	65-76667-9										2
50	65-76667-15										1
51	65-76667-16										1
52	BACN10JC4										2
53	BACN10GW4										2
54	AN960D416										4
55	MS20002C4										2
56	BACB30LU4-12										2
57	BACB30FD4-14										2
58	65-76611-13										4
59	65-76611-15										2
60	65-76611-14										2
61	69-60120-1										2
62	BACN10JC4										62
63	AN960D416										62
64	BACB30LU4-14										62
65	65-76658-1										1
66	BACN10JC3										2
67	AN960D10										2
68	BACB30LU3-6										2
69	65-76658-5										1
70	65-76658-6										AR
71	65-76658-7										AR
72	BACN10JC3										2
73	AN960D10										2
74	BACB30NE3-10										2
75	65-76658-8										1
76	BACB30FN6A4										10
77	BACC30M6										10
78	BACS40R8C60F										AR

BOEING 
COMMERCIAL JET
OVERHAUL MANUAL

FIG. & ITEM NO.	PART NO.	AIRLINE PART NUMBER	N O M E N C L A T U R E							USE CODE	QTY PER ASSY
			1	2	3	4	5	6	7		
1101											
79	69-60125-1										1
80	BACB10D75F										2
80	69-60125-3										2
81	1992B1										1
82	69-60125-2										1
83	65-76658-3										1
84	65-76658-2										1
85	BACN10JC3										2
86	AN960D10										2
87	BACB30LU3-6										2
88	65-76658-5										1
89	65-76658-6										AR
90	65-76658-7										AR
91	BACN10JC3										2
92	AN960D10										2
93	BACB30NE3-10										2
94	65-76658-8										1
95	BACB30FN6A4										10
96	BACC30M6										10
97	BACS40R8C60F										AR
98	69-60125-1										1
99	BACB10D75F										2
99	69-60125-3										2
100	1992B1										1
101	69-60125-2										1
102	65-76658-4										1
103	BACR15CE8D										4
104	69-60087-3										2
104	69-60087-1										2
105	65-46150-62										4
106	69-60087-2										1
106	69-60087-4										1
107	MS24665-153										4
108	BACN10JD104AU										4
109	AN960C416										4
110	BACB30LJ4U28										2
111	BACB30LJ4U24										2
112	69-60117-1										1
113	69-60117-2										1
114	69-60118-1										1

BOEING 
COMMERCIAL JET
OVERHAUL MANUAL

65-76611

FIG. & ITEM NO.	PART NO.	AIRLINE PART NUMBER	N O M E N C L A T U R E							USE CODE	QTY PER ASSY
			1	2	3	4	5	6	7		
1101											
115	69-60118-2										1
116	BACN10JC4										4
117	AN960C416										4
118	BACB30LH4DU39										4
119	BACN10JC4										2
120	AN960C416										2
121	BACB30LJ4DU31										2
122	69-60097-1										2
123	65-46261-1										1
123	65-85655-1										1
124	BACN10JC3										4
125	BACN10JC4										8
125	BACN10JC4										9
126	AN960C10										2
127	AN960C10L										2
128	AN960C416										3
129	AN960C416L										5
129	AN960C416L										6
130	BACB30LH3U6										2
131	NAS1103-5										2
131	BACB30NF3-5										2
132	NAS1104-7										3
132	BACB30NF4-7										3
133	NAS1104-10										5
133	BACB30NF4-11										4
133A	BACB30NF4-10										2
134	69-60092-1										1
135	69-60104-1										1
135	65-85654-1										1
135A	BACN10JC8										1
135B	AN960C816L										1
135C	69-64167-1										1
135D	1645B										1
135E	69-64167-2										1
135F	BACB10BNO8CP										1
135F	BACB10B258RS										1
136	65-46261-3										1
136	65-85655-3										1
137	65-46261-4										1

BOEING 
COMMERCIAL JET
OVERHAUL MANUAL

FIG. & ITEM NO.	PART NO.	AIRLINE PART NUMBER	N O M E N C L A T U R E							USE CODE	QTY PER ASSY
			1	2	3	4	5	6	7		
1101											1
138	65-46261-5		.	.							1
139	65-46261-6		.	.							1
140	65-46261-7		.	.							1
141	65-46261-2		.								1
141	65-85655-2		.								1
142	BACN1OJC3		.	.							4
143	BACN1OJC4		.	.							8
143	BACN1OJC4		.	.							9
144	AN960C10		.	.							2
145	AN960C10L		.	.							2
146	AN960C416		.	.							3
147	AN960C416L		.	.							5
147	AN960C416L		.	.							6
148	BACB30LH3U6		.	.							2
149	NAS1103-5		.	.							2
149	BACB3ONE3-5		.	.							2
150	NAS1104-7		.	.							3
150	BACB3ONF4-7		.	.							3
151	NAS1104-10		.	.							5
151	BACB3ONF4-11		.	.							4
151A	BACB3ONF4-10		.	.							2
152	69-60092-1		.	.							1
153	69-60104-2		.	.							1
153	69-85654-2		.	.							1
153A	BACN1OJC8		.	.							1
153B	AN960C816L		.	.							1
153C	69-64167-1		.	.							1
153D	1645B		.	.							1
153E	69-64167-2		.	.							1
153F	BACB10BNO8CP		.	.							1
153F	BACB10B258RS		.	.							1
154	65-46261-3		.	.							1
154	65-85655-3		.	.							1
155	65-46261-4		.	.							1
156	65-46261-5		.	.							1
157	65-46261-6		.	.							1
158	65-46261-7		.	.							1
159	BACN1OJC4		.	.							8
160	AN960D416L		.	.							8
161	BACB30LU4-19		.	.							8

BOEING 
COMMERCIAL JET
OVERHAUL MANUAL

65-76611

FIG. & ITEM NO.	PART NO.	AIRLINE PART NUMBER	N O M E N C L A T U R E							USE CODE	QTY PER ASSY
			1	2	3	4	5	6	7		
1101											2
162	69-60115-2		.								4
163	BACN10JC4		.								4
164	AN960C416		.								4
165	BACB30LH4DU39		.								4
166	69-60091-1		.								1
167	65-46260-1		.								1
167	65-46260-7		.								1
167	65-82752-1		.								1
168	MS20426D4		.								16
169	BACN10JN5		.								8
170	BACB3ONE5-6		.								8
170	BACB3ONE5-6		.								4
170A	BACB3ONE5-10		.								1
170B	BACB30LU5-10		.								3
171	BACN10JC5		.								2
172	BACB3ONE5-7		.								2
173	BACB3ODX10-4		.								4
174	NAS1080PI0		.								4
175	69-60103-1		.								1
176	69-60103-2		.								2
177	69-60103-3		.								1
177A	69-60181-1		.								1
178	69-60113-1		.								2
179	69-60100-1		.								1
180	NAS538B10P22		.								2
181	69-60100-2		.								1
182	65-46260-2		.								AR
183	65-46260-6		.								AR
184	MS20615M6-3		.								6
185	65-44616-3		.								1
186	65-46260-4		.								1
187	65-46260-5		.								AR
188	65-46262-1		.								1
188A	65-82752-2		.								1
188B	65-82752-3		.								1
188C	65-82752-4		.								1
188D	65-82752-5		.								1
188E	65-82752-6		.								4
188F	65-82752-7		.								1
188G	65-82752-8		.								1



OVERHAUL MANUAL

FIG. & ITEM NO.	PART NO.	AIRLINE PART NUMBER	NOMENCLATURE							USE CODE	QTY PER ASSY	
			1	2	3	4	5	6	7			
1101-188H	65-82752-9		.	.	ANGLE	*[5]						1
188I	65-82752-10		.	.	ANGLE	*[5]						1
188J	65-82753-1		.	.	FITTING, SUPPORT	*[5]						1
188K	65-82753-2		.	.	FITTING, SUPPORT	*[5]						1
188L	BACB30FM6-4		.	.	BOLT	*[5]						22
188M	BACB30FM6-6		.	.	BOLT	*[5]						10
188N	BACB30FM6-8		.	.	BOLT	*[5]						2
188O	BACB30FN6A4		.	.	BOLT	*[5]						6
188P	BACC30M6		.	.	COLLAR	*[5]						40
188Q	BACB30NF5-5		.	.	BOLT	*[5]						2
188R	BACB30NF5-7		.	.	BOLT	*[5]						4
188S	BACB30NF5-9		.	.	BOLT	*[5]						2
188T	BACB30NF5-11		.	.	BOLT	*[5]						2
188U	AN960PD516		.	.	WASHER	*[5]						10
188V	BACN10JC5		.	.	NUT	*[5]						10
188W	BACF3T15M10-9		.	.	FILLER	*[5]						2
188X	69-60100-3		.	.	FITTING ASSY, SUPPORT	*[5]						1
188Y	NAS538B10P22		.	.	BUSHING							2
188Z	69-60100-4		.	.	FITTING							1
189	BACN10GW4		.		NUT							8
190	AN960-416		.		WASHER							8
191	BACB30FD4-7		.		BOLT							8
192	MS20470D6		.		RIVET							10
193	69-60102-1		.		CLEVIS ASSY							1
194	NAS538B10P20		.	.	BUSHING							2
195	69-60102-2		.	.	CLEVIS							1
196	BACB30FM6-4		.		BOLT							18
197	BACC30M6		.		COLLAR							18
198	BACB30DX6-6		.		BOLT							2
199	NAS1080-6		.		COLLAR							2
200	BACB30DX8-6		.		BOLT							2
201	NAS1080-8		.		COLLAR							2
202	BACB30FM6-6		.		BOLT							4
203	BACC30M6		.		COLLAR							4
204	69-60107-3		.		SUPPORT, CLEVIS							1
205	69-60107-4		.		SUPPORT, CLEVIS (OPPOSITE 69-60107-3)							1
206	BACB30FM6-5		.		BOLT							8
207	BACB30FM6-4		.		BOLT							4
208	BACC30M6		.		COLLAR							12

FIG. & ITEM NO.	PART NO.	AIRLINE PART NUMBER	N O M E N C L A T U R E							USE CODE	QTY PER ASSY
			1	2	3	4	5	6	7		
1101											
209	69-60402-3		.								4
210	65-76611-21		.								1
211	BACN10JC4		.								28
212	AN960D416		.								28
213	BACB30LU4-16		.								12
214	BACB30LU4-4		.								16
215	BACB30FM6-4		.								12
216	BACC30M6		.								12
217	65-76667-5		.								1
218	65-76667-6		.								1
219	69-60402-1		.								1
220	69-60402-2		.								1
221	69-60402-4		.								4
222	MS24665-153		.								2
223	BACN10JD104AU		.								2
224	AN960C416		.								2
225	BACB30LU4-16		.								2
226	65-76611-23		.								2
227	69-60402-5		.								1
228	69-60402-6		.								1
229	BACN10JC4		.								15
230	AN960D416L		.								15
231	BACB30LU4-14		.								15
232	65-76611-22		.								1
233	BACN10JC4		.								19
234	AN960D416		.								19
235	NAS43DD4-12		.								19
236	AN970D4		.								19
237	BACB30LU4-18		.								19
238	65-76667-14		.								1
239	MS20470D6		.								24
240	65-76611-11		.								1
241	BACN10JC4		.								28
242	AN960D416		.								28
243	BACB30LU4-15		.								28
244	65-76611-11		.								1
245	65-76667-13		.								1
246	BACN10JC3		.								2
247	AN960D10		.								2
248	BACB30LU3-17		.								2

BOEING 
COMMERCIAL JET
OVERHAUL MANUAL

FIG. & ITEM NO.	PART NO.	AIRLINE PART NUMBER	N O M E N C L A T U R E							USE CODE	QTY PER ASSY
			1	2	3	4	5	6	7		
1101											
249	BACB30LU3-13										5
250	65-76611-16										1
251	65-76611-27										1
252	BACB30LU3-12										12
253	BACB30LU3-11										14
254	69-60469-1										1
254	65-76611-25										1
255	69-60469-2										1
255	65-76611-25										1
256	65-76611-24										2
257	BACB30LU3-7										27
258	65-76611-12										1
259	BACB30LU3-6										92
260	BACB30LU3-3										6
261	65-76611-4										1
262	65-76611-6										1
263	65-76611-5										1
264	BACN10JC3										11
265	AN960D10										11
266	BACB30LU3-2										11
267	BACR15CE5D										4
268	65-76680-1										1
269	65-76680-2										1
270	65-76611-3										1
271	SL1579										130
271	SL52										130
	65-44560-1									A	
	65-44560-2									B	
	65-44560-3									C	
	65-44560-4									D	
272	BACH5M0260BBN									AB	1
272	BACH6M0250AAN									C	1
272	230S5786-0250									D	1
272	R26765-0250									D	1
272	R26765-0260									D	1
273	BACH8A04NN02 40T										1
273	BACH6M0240AAN										1
273	BACH6M0250AAN										1
274	AN924-5D									ABD	1
274	AN924-4D									C	1

BOEING 
COMMERCIAL JET
OVERHAUL MANUAL

65-76611

FIG. & ITEM NO.	PART NO.	AIRLINE PART NUMBER	N O M E N C L A T U R E						USE CODE	QTY PER ASSY	
			1	2	3	4	5	6			7
1101											
275	AN960PD816		.	W	A	S	H	E	R	ABD	1
275	AN960PD716		.	W	A	S	H	E	R	C	1
276	ER833D0506		.	E	L	B	O	W	, V79470	AB	1
276	BACE21AS0506D		.	E	L	B	O	W	(optional)	AB	1
276	BACE21AS0406		.	E	L	B	O	W		C	1
276	BACE21AS0506		.	E	L	B	O	W		D	1
277	AN924-4D		.	N	U	T					1
278	AN960PD716		.	W	A	S	H	E	R		1
279	MS21908-4		.	E	L	B	O	W			1
280	BACN10JC3		.	N	U	T					8
281	AN960PD10		.	W	A	S	H	E	R		8
282	AN525-10R12		.	S	C	R	E	W	(used with 65-44617-2, item 283)	AB	8
282	AN525-10R12		.	S	C	R	E	W	(used with 65-44617-2, item 283)	CD	6
282	BACB30EL3-5		.	S	C	R	E	W	(replaces AN525-10R12)(used with 65-44617-2, item 283)	CD	2
282	BACB30LU3-8		.	S	C	R	E	W	(replaces AN525-10R12)(used with 65-44617-4, item 283)	D	6
282	BACB30LU3-5		.	S	C	R	E	W	(replaces AN525-10R12)(used with 65-44617-4, item 283)	D	2
283	65-44617-2		.	G	U	I	D	E	, Hose		1
283	65-44617-4		.	G	U	I	D	E	, Hose *[8]	D	1
284	BACN10JC3		.	N	U	T			(used with 65-44617-3, item 287)		6
284	BACN10JC3		.	N	U	T			(used with 65-44617-6, item 287)	D	4
285	AN960PD10		.	W	A	S	H	E	R		6
285	AN960PD10		.	W	A	S	H	E	R	D	4
286	NAS623-3-6		.	S	C	R	E	W			6
286	NAS623-3-8		.	S	C	R	E	W		D	4
287	65-44617-3		.	G	U	I	D	E	, Hose		1
287	65-44617-6		.	G	U	I	D	E	, Hose (replaces 65-44617-5) *[8]		1
288	BACN10JC10		.	N	U	T					1
289	AN960-1016		.	W	A	S	H	E	R		1
290	NAS1110-28		.	B	O	L	T				1
291	BACN10JC3		.	N	U	T					4
292	AN960PD10		.	W	A	S	H	E	R		4
293	NAS1103-16		.	B	O	L	T				2

OVERHAUL MANUAL

FIG. & ITEM NO.	PART NO.	AIRLINE PART NUMBER	N O M E N C L A T U R E							USE CODE	QTY PER ASSY	
			1	2	3	4	5	6	7			
1101-												
294	NAS1103-38		.	B	O	L	T				2	
295	69-54612-1		.	B	U	S	H	I	N	G	2	
296	65-44616-1		.	B	R	A	C	K	E	T	1	
297	65-44616-2		.	B	R	A	C	K	E	T	1	
298	65-44617-1		.	G	U	I	D	E			1	
299	BACN10JC10		.	N	U	T					1	
300	AN960-1016		.	W	A	S	H	E	R		1	
301	NAS1110-20		.	B	O	L	T				1	
301A	NAS679A4W		.	N	U	T				AB	1	
301B	AN960PD416		.	W	A	S	H	E	R	AB	1	
301C	NAS1104-25		.	B	O	L	T			A	1	
301C	NAS1104-16		.	B	O	L	T			B	1	
301D	BACW10Q4		.	W	A	S	H	E	R	A	1	
301E	69-54628-1		.	C	L	E	V	I	S	B	1	
301F	MS24586C227		.	S	P	R	I	N	G	B	1	
301G	NAS679A4W		.	N	U	T				B	1	
301H	AN960PD416		.	W	A	S	H	E	R	B	1	
301I	NAS1104-74		.	B	O	L	T			B	1	
301J	NAS43DD4-100		.	S	P	A	C	E	R	B	2	
301K	NAS43DD4-48		.	S	P	A	C	E	R	B	1	
301L	69-54628-1		.	C	L	E	V	I	S	B	1	
302	65-44660-1		.	A	C	T	U	A	T	O	R	1
302	65-44660-2		.	A	C	T	U	A	T	O	R	1
302	10-60797-3											
302	65-44660-3		.	A	C	T	U	A	T	O	R	1
302	10-60797-4											
302	65-44660-4		.	A	C	T	U	A	T	O	R	1
302A	BACN10JC4		.	.	N	U	T			B	1	
302B	AN960C416L		.	.	W	A	S	H	E	R	1	
302C	BACB30NE4-14		.	.	B	O	L	T		B	1	
302D	69-60180-1		.	.	C	R	A	N	K	B	1	
302E	69-54611-1		.	.	B	L	O	C	K	A	1	
302F	BACR12BE216											
302G	NAS1611-215											
302H	BACC14AD4		.	.	C	A	P			AB	1	
302I	69-54677-1											
302J	MS28774-211											
302J	MS28782-16											
302J	BACR12BE211											
302K	NAS1611-211											
302K	NAS1611-210											
302L	69-54676-1											
302M	NAS1611-115											
302N	MS28774-115											
302N	MS28782-13											
302P	NAS1611-115											
302Q	MS28774-115											

OVERHAUL MANUAL

FIG. & ITEM NO.	PART NO.	AIRLINE PART NUMBER	N O M E N C L A T U R E							USE CODE	QTY PER ASSY
			1	2	3	4	5	6	7		
1101-302Q	MS28782-13		DELETED								
302R	BACC14AD4		DELETED								
302R	BACC14AD5		. . CAP, PROTECTIVE (REPLS MS21914-5)							AB	1
302S	1U1087-36		DELETED								
302T	69-54679-1		DELETED								
302U	69-54613-1		. . BLOCK							AB	1
302V	1U1087		. . ACTUATOR, V60029 (BOEING 10-60797-1)							A	1
302V	1U1150		. . ACTUATOR, V60029 (BOEING 10-60797-1)							B	1
			INSTALLATION PARTS *[9]								
303	BACN10GW10		NUT								2
304	AN960C1016		WASHER								2
305	BACB30MT10-20		BOLT								2
306	MS20002C10		WASHER								2
307	BACB30NG10H9		BOLT								2
308	MS20002C10		WASHER								2
309	AN960C1016L		WASHER								2
310	MS24665-153		PIN, COTTER *[8]								1
311	BACN10JD104		NUT *[8]								1
312	AN960-416		WASHER *[8]								1
313	BACB30LU4DU30		BOLT *[8]								1
313	BACP18AM4B 18HC		PIN, QUICK RELEASE *[8]								1
314	69-60129-1		TUBE ASSY *[8]								1
314	69-61206-1		TUBE ASSY *[8]								1
314	65-77496-1		TUBE ASSY *[8]								1
314	65-78228-2		TUBE ASSY (SB 32-1028)*[8]								1
315	MS39086-264		. PIN (USED ON 69-60129-1)								1
315	MS39086-264		. PIN (USED ON 65-78228-2, 69-61206-1)								2
316	69-60106-1		. RETAINER (USED ON 69-20129-1, 65-78228-2)								1
316	69-60106-2		. RETAINER (USED ON 69-21206-1)								1
316A	69-61207-2		. BUSHING (USED ON 65-78228-2, 69-61206-1)								1
317	69-60128-3		. TUBE (USED ON 69-60129-1)								1
317	69-61207-1		. TUBE (USED ON 69-61206-1)								1
317	65-78228-3		. TUBE (USED ON 65-78228-2)								1
317	69-60128-1		. TUBE (OPT TO 69-60128-3)								1
318	69-54859-2		SHAFT (PRE SB 32-1129)								1
318	69-54859-4		SHAFT (PRE SB 32-1129)								1
318	69-54859-6		SHAFT (POST SB 32-1129)								1

OVERHAUL MANUAL

FIG. & ITEM NO.	PART NO.	AIRLINE PART NUMBER	N O M E N C L A T U R E							USE CODE	QTY PER ASSY
			1	2	3	4	5	6	7		
1101-319	BACS40R09T65										2
319A	RS125										2
319B	69-35382-3										1
319B	69-72698-2										1
319B	69-72698-7										1
319C	69-73021-2										2
320	69-60116-1										2
320	69-60116-2										2

*[1] USED ON 65-46261-1

*[2] USED ON 65-85655-1

*[3] USED ON 65-46261-2

*[4] USED ON 65-85655-2

*[5] USED ON 65-82752-1

*[6] USED ON 65-46260-1

*[7] USED ON 65-46260-7

*[8] CUSTOMER OPTION

*[9] PART OF NOSE GEAR GRAVEL DETECTOR INSTL, 65-76657-1

*[10] PRE SB 32-1246

VENDORS

V06851 RESISTOFLEX CORP., WESTERN DIVISION, 301 N. CRESCENT WAY, ANEHEIM, CALIFORNIA 92803

V60029 HYDRAULICS UNITS, INC., SUB. OF DOWTY AEROSPACE INC., 1700 BUSINESS CENTER DRIVE, DUARTE, CALIFORNIA 91010-2859

V78570 TITFLEX CORP., SUB. OF BUNDY CORP., 603 HENDEE ST., P.O. BOX 90054, SPRINGFIELD, MASSACHUSETTS 01109

V79470 DANA CORP., WEATHERHEAD DIV., 6615 BROTHERHOOD WAY, FORT WAYNE, INDIANA 46825

V80756 KAYDON CORP., SPIROLOX DIV., 29 CASSENS CT., ST. LOUIS, MISSOURI 63026-2542

V95879 STEWART-WARNER ALEMITE CORP., 1826 DIVERSEY PARKWAY, CHICAGO, ILLINOIS 60614-1540

V97393 SHUR-LOCK CORP., 2541 WHITE ROAD, P.O. BOX 19584, IRVINE, CALIFORNIA 92713

OVERHAUL MANUAL

Part No.	Fig. and Index No.	Qty. per Assy.
AN525-10R12	1101-	AR
AN924-4D		AR
AN924-5D		AR
AN960-1016		AR
AN960-416		AR
AN960C10		AR
AN960C10L		AR
AN960C1016		AR
AN960C1016L		AR
AN960C416		AR
AN960C416L		AR
AN960C516L		AR
AN960C816L		AR
AN960D10		AR
AN960D416		AR
AN960D416L		AR
AN960D616		AR
AN960PD10		AR
AN960PD416		AR
AN960PD516		AR
AN960PD716		AR
AN960PD816		AR
AN970D10		AR
AN970D4		AR
BACB10BP06CP	22	2
BACB10BNO8CP	135F	1
BACB10BNO8CP	153F	1
BACB10D15F	11	2
BACB10D31F	12	2
BACB10D75F	80	2
BACB10D75F	99	2
BACB30DX10-4	173	4
BACB30DX6-6	198	2
BACB30DX8-6	200	2
BACB30EL3-5	282	2
BACB30FD4-14	57	2
BACB30FD4-7	191	8
BACB30FM6-3	45	8
BACB30FM6-3	47	12

Part No.	Fig. and Index No.	Qty. per Assy.
BACB30FM6-4	188L	22
BACB30FM6-4	196	18
BACB30FM6-4	207	4
BACB30FM6-4	215	12
BACB30FM6-5	206	8
BACB30FM6-6	188M	10
BACB30FM6-6	202	4
BACB30FM6-8	188N	2
BACB30FN6A4	76	10
BACB30FN6A4	95	10
BACB30FN6A4	188 O	6
BACB30LH3U6	130	2
BACB30LH3U6	148	2
BACB30LH4DU39	118	4
BACB30LJ4DU22	4	4
BACB30LJ4DU31	121	2
BACB30LJ4U24	111	2
BACB30LJ4U28	110	2
BACB30LJ5DU30	9	4
BACB30LU3-11	253	14
BACB30LU3-12	37	2
BACB30LU3-12	252	12
BACB30LU3-13	249	5
BACB30LU3-14	35	14
BACB30LU3-17	36	2
BACB30LU3-17	248	2
BACB30LU3-2	266	11
BACB30LU3-3	260	6
BACB30LU3-5	282	2
BACB30LU3-6	68	2
BACB30LU3-6	87	2
BACB30LU3-8	282	6
BACB30LU4-12	56	2
BACB30LU4-14	64	62
BACB30LU4-14	231	15
BACB30LU4-15	243	28
BACB30LU4-16	40	2
BACB30LU4-16	213	12
BACB30LU4-16	225	2
BACB30LU4-18	237	19
BACB30LU4-19	161	8
BACB30LU4-24	25	4



OVERHAUL MANUAL

Part No.	Fig. and Index No.	Qty. per Assy.
BACB30LU4-4	1101-214	16
BACB30LU4-6	259	92
BACB30LU4-7	257	27
BACB30LU4DU30	313	1
BACB30LU4DU39	165	4
BACB30LU5-10	170B	3
BACB30NE3-10	74	2
BACB30NE3-10	93	2
BACB30NE3-5	131	2
BACB30NE3-5	149	2
BACB30NE5-10	170A	1
BACB30NE5-6	170	8
BACB30NE5-6	170	4
BACB30NE5-7	172	2
BACB30NE6-6	28	4
BACB30NF4-7	150	3
BACB30NF4-10	133A	2
BACB30NF4-10	151A	2
BACB30NF4-11	133	4
BACB30NF4-11	151	4
BACB30NF5-5	188Q	2
BACB30NF5-7	188R	4
BACB30NF5-9	188S	2
BACB30NF5-11	188T	2
BACB30NG10H9	307	2
BACB30MT10-20	305	2
BACC30M6	46	8
BACC30M6	48	12
BACC30M6	77	10
BACC30M6	96	10
BACC30M6	188P	40
BACC30M6	197	18
BACC30M6	203	4
BACC30M6	208	12
BACC30M6	216	12
BACE21AS0406	276	1
BACE21AS0506	276	1
BACE21AS0506D	276	1
BACF3T15M10-9	188W	2
BACH5M0260BBN	272	1
BACH6M0240AAN	273	1
BACH6M0250AAN	272	1
BACH6M0250AAN	273	1

Part No.	Fig. and Index No.	Qty. per Assy.
BACH8A04NN0240T	273	1
BACN10GW10	303	2
BACN10GW4	53	2
BACN10GW4	189	8
BACN10JC10	288	1
BACN10JC10	299	1
BACN10JC3	32	18
BACN10JC3	66	2
BACN10JC3	72	2
BACN10JC3	85	2
BACN10JC3	91	2
BACN10JC3	124	4
BACN10JC3	142	4
BACN10JC3	246	2
BACN10JC3	264	11
BACN10JC3	280	8
BACN10JC3	284	6
BACN10JC3	284	4
BACN10JC3	291	4
BACN10JC4	23	2
BACN10JC4	26	4
BACN10JC4	38	2
BACN10JC4	52	2
BACN10JC4	62	62
BACN10JC4	116	4
BACN10JC4	119	2
BACN10JC4	125	8
BACN10JC4	143	8
BACN10JC4	159	8
BACN10JC4	211	28
BACN10JC4	229	15
BACN10JC4	233	19
BACN10JC4	241	28
BACN10JC5	169	8
BACN10JC5	171	2
BACN10JC5	188V	10
BACN10JC6	17	2
BACN10JC8	135A	1
BACN10JC8	153A	1
BACN10JD104	2	4
BACN10JD104	311	1
BACN10JD104AU	108	4

Part No.	Fig. and Index No.	Qty per. Assy	Part No.	Fig. and Index No.	Qty per. Assy
BACN10JD104AU	1101-223	2	R26765-0250	272	1
BACN10JD105AU	7	4	R26765-0260	272	1
BACP18AM4B18HC	313	1	RS125	319B	2
BACR15CE5D	267	4	SL1579	271	130
BACR15CE8D	103	4	SL52	271	130
BACR8C60F	78	AR	10-60797-1	302V	1
BACR8C60F	97	AR	10-60797-2	302V	1
BACS40R09T65	319	2	10-60797-3	302	1
BACS40R8E20F	29	AR	10-60797-4	302	1
BACW10Q4	301D	1	1645B	20	1
ER833D0506	276	1	1645B	135D	1
MS20002C10		AR	1645B	153D	1
MS20002C4		AR	1992B1	81	1
MS20426D4		AR	1992B1	100	1
MS20470D6		AR	230S5786-0250	272	1
MS20615M6-3		AR	65-44616-1	296	1
MS21908-4		AR	65-44616-2	297	1
MS24856C227		AR	65-44616-3	185	1
MS24665-153		AR	65-44617-1	298	1
MS39086-264		AR	65-44617-2	283	1
NAS1080-6		AR	65-44617-3	287	1
NAS1080-8		AR	65-44617-4	283	1
NAS1080P10		AR	65-44617-6	287	1
NAS1103-16		AR	65-44660-1	302	1
NAS1103-38		AR	65-44660-2	302	1
NAS1103-5		AR	65-44660-3	302	1
NAS1104-10		AR	65-44660-4	302	1
NAS1104-16		AR	65-46150-62	105	4
NAS1104-25		AR	65-46260-1	167	1
NAS1104-7		AR	65-46260-2	182	AR
NAS1104-74		AR	65-46260-4	186	1
NAS1110-20		AR	65-46260-5	187	AR
NAS1110-28		AR	65-46260-6	183	AR
NAS43DD4-100		AR	65-46260-7	167	1
NAS43DD4-12		AR	65-46261-1	123	1
NAS43DD4-48		AR	65-46261-2	141	1
NAS538B10P20		AR	65-46261-3	136	1
NAS538B10P22		AR	65-46261-3	154	1
NAS623-3-6		AR	65-46261-4	137	1
NAS623-3-8		AR	65-46261-4	155	1
NAS679A4W		AR	65-46261-5	138	1
			65-46261-5	156	1
			65-46261-6	139	1

OVERHAUL MANUAL

Part No.	Fig. and Index No.	Qty per. Assy	Part No.	Fig. and Index No.	Qty per. Assy
65-46261-6	1101-157	1	65-76667-6	218	1
65-46261-7	140	1	65-76667-9	49	2
65-46261-7	158	1	65-76680-1	268	1
65-46262-1	188	1	65-76680-2	269	1
65-54612-1	295	2	65-77496-1	314	1
65-76611-11	240	1	65-78228-2	314	1
65-76611-11	244	1	65-78228-3	317	1
65-76611-12	258	1	65-82752-1	167	1
65-76611-13	58	4	65-82752-10	188I	1
65-76611-14	60	2	65-82752-2	188A	1
65-76611-15	59	2	65-82752-3	188B	1
65-76611-16	250	1	65-82752-4	188C	1
65-76611-17	41	1	65-82752-5	188D	1
65-76611-18	42	1	65-82752-6	188E	1
65-76611-19	43	1	65-82752-7	188F	1
65-76611-20	44	1	65-82752-8	188G	1
65-76611-21	210	1	65-82752-9	188H	1
65-76611-22	232	1	65-82753-1	188J	1
65-76611-23	226	2	65-82753-2	188K	1
65-76611-24	256	2	65-85654-1	135	1
65-76611-25	254	1	65-85654-2	153	1
65-76611-25	255	1	65-85655-1	123	1
65-76611-26			65-85655-2	141	1
65-76611-27	251	1	65-85655-3	136	1
65-76611-3	270	1	65-85655-3	154	1
65-76611-4	261	1	69-35382-3	319A	1
65-76611-5	263	1	69-54612-1	295	2
65-76611-6	262	1	69-54628-1	301E	1
65-76658-1	65	1	69-54628-1	301L	1
65-76658-2	84	1	69-54859-2	318	1
65-76658-3	83	1	69-54859-4	318	1
65-76658-4	102	1	69-54859-6	318	1
65-76658-5	69	1	69-60087-1	104	2
65-76658-5	88	1	69-60087-2	106	1
65-76658-6	70	AR	69-60087-3	104	2
65-76658-6	89	AR	69-60087-4	106	1
65-76658-7	71	AR	69-60088-1	14	1
65-76658-7	90	AR	69-60088-2	15	1
65-76658-8	75	1	69-60089-1	10	4
65-76658-8	94	1	69-60089-2	13	1
65-76667-13	245	1	69-60089-3	16	1
65-76667-14	238	1	69-60091-1	166	1
65-76667-15	50	1	69-60092-1	134	1
65-76667-16	51	1	69-60092-1	152	1
65-76667-5	217	1			

OVERHAUL MANUAL

Part No.	Fig. and Index No.	Qty per Assy	Part No.	Fig. and Index No.	Qty per Assy
69-60097-1	1101-122	2	69-60402-6	228	1
69-60100-1	179	1	69-60469-1	254	1
69-60100-2	181	1	69-60469-2	255	1
69-60100-3	188X	1	69-61206-1	314	1
69-60100-4	188Y	1	69-61207-2	316A	1
69-60102-1	193	1	69-64167-1	135C	1
69-60102-2	195	1	69-64167-1	153C	1
69-60103-1	175	1	69-64167-2	135E	1
69-60103-2	176	2	69-64167-2	153E	1
69-60103-3	177	1	69-72698-2	319B	1
69-60104-1	135	1	69-72698-7	319B	1
69-60104-2	153	1	69-73021-2	319C	2
69-60106-1	316	1			
69-60106-2	316	1			
69-60107-3	204	1			
69-60107-4	205	1			
69-60108-1	30	1			
69-60108-2	31	1			
69-60109-1	19	2			
69-60109-2	21	1			
69-60113-1	178	2			
69-60115-2	162	2			
69-60116-1	320	2			
69-60116-2	320	2			
69-60117-1	112	1			
69-60117-2	113	1			
69-60118-1	114	1			
69-60118-2	115	1			
69-60119-1	5	4			
69-60120-1	61	2			
69-60125-1	79	1			
69-60125-1	98	1			
69-60125-2	82	1			
69-60125-2	101	1			
69-60125-3	80	2			
69-60125-3	99	2			
69-60128-1	317	1			
69-60128-3	317	1			
69-60129-1	314	1			
69-60181-1	177A	1			
69-60402-1	219	1			
69-60402-2	220	1			
69-60402-3	209	4			
69-60402-4	221	4			
69-60402-5	227	1			