

OVERHAUL MANUAL

TO: ALL HOLDERS OF MANUAL NOSE GEAR EXTENSION MECHANISM ASSEMBLY OVERHAUL
 MANUAL, 32-34-10

REVISION NO. 2, DATED JUN 1/94

HIGHLIGHTS

DESCRIPTION OF CHANGE	TOPICS AFFECTED												
	D & O	D / A S S Y	C l e a n i n g	I n s p / C h k	R e p a i r	A S S Y	F / C	T e s t	T / S h o o t i n g	S / T o o l s	S t o r a g e	I P L	L / O v e r h a u l
Added mechanism assembly 65-46329-21 with changed bearings for better corrosion resistance Added these bearings as preferred on other mechanism assemblies												X	

MANUAL NOSE GEAR EXTENSION MECHANISM ASSEMBLY

32-34-10

BOEING P/N 65-46329-2, -6, -12, -13, -15, -17, -19, -21

AIRLINE P/N

THE FOLLOWING DIRECTIVES APPLY TO THIS SUBJECT:

BOEING SERVICE BULLETIN	BOEING TEMPORARY REVISION	OTHER DIRECTIVES	DATE DIRECTIVE INCORPORATED INTO TEXT
		PRR 31409	Sep 10/71
		PRR 31991	Sep 10/71
		PRR 32039	Mar 25/73

OVERHAUL MANUAL

LIST OF EFFECTIVE PAGES

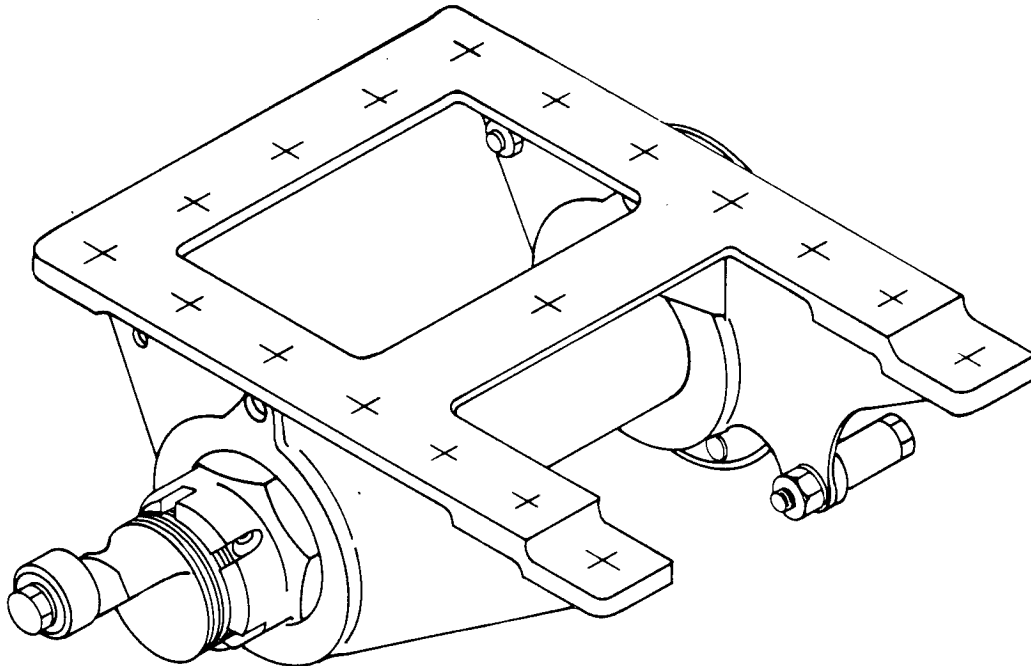
* Indicates pages revised, added or deleted in latest revision
 F Indicates foldout pages - print one side only

PAGE	DATE	PAGE	DATE	PAGE	DATE
32-34-10					
* T-1	Jun 1/94				
T-2	BLANK				
* LEP-1	Jun 1/94				
LEP-2	BLANK				
T/C-1	Jul 5/83				
T/C-2	BLANK				
1	Jul 5/83				
2	Jul 5/83				
3	Jul 5/83				
4	BLANK				
5	Sep 10/71				
6	Mar 25/73				
* 7	Jun 1/94				
* 8	Jun 1/94				

TABLE OF CONTENTS

Paragraph Title	Page
Description and Operation	1
Disassembly	2
Cleaning.	2
Inspection/Check.	2
Repair.	2
Assembly.	3
Fits and Clearances (Not applicable)	
Testing (Not applicable)	
Trouble Shooting (Not applicable)	
Storage Instructions.	3
Special Tools, Fixtures, and Equipment (Not applicable)	
Illustrated Parts List.	5

MANUAL NOSE GEAR EXTENSION MECHANISM ASSEMBLY



Manual Nose Gear Extension Mechanism Assembly
Figure 1

1. DESCRIPTION AND OPERATION

- A. The manual nose gear extension mechanism assembly consists of a torque tube supported by bearings in a bracket. The torque tube contains cable pulley, stop, cable guards, and roller.

B. Leading Particulars

Length (overall) -- 8.5 inches
Height (overall) -- 5.0 inches
Width (overall) -- 8.0 inches
Weight (approx) -- 2 pounds

2. DISASSEMBLY (Fig. 2)

- A. Remove cotter pin (1). Unscrew nut (2). Pull torque tube (3) out of bracket (17).
- B. Disassemble parts (4 thru 7A).
- C. Remove parts (11 thru 16) from bracket (19).

3. CLEANING

- A. Clean all parts except bearings (6, 6A, 15, 18) in accordance with standard industry practices and the information contained in 20-30-03.
- B. Clean bearings (6, 6A, 15, 18) only by special method for teflon lined bearing in 20-30-01.

4. INSPECTION/CHECK (Fig. 2)

- A. Check all parts for obvious defects in accordance with standard industry practices.

NOTE: If bearing (6A) will not rotate freely, it is not necessarily an indication of abnormal binding. The bearing is designed to require an initial breakaway torque of 15 lb-in. to rotate the inner ball.

- B. Penetrant check tube (3B, 10) and bracket (19) per 20-20-02.

5. REPAIR

- A. Repair minor defects using standard industry practices.
- B. Refinish (Fig. 2)

NOTE: Refer to 20-30-02 for stripping of protective finishes and to 20-40-01 for explanation of F and SRF finish codes.

- (1) Stop (9) -- Alodize or chromic acid anodize and apply primer, BMS 10-11, type 1 (SRF-2.30) all over. Material: Al alloy.

OVERHAUL MANUAL

- (2) Torque tube (3B, 10) -- Chromic acid anodize and apply primer, BMS 10-11, type 1 (SRF-2.19), except no primer on threads or in 0.250-inch bore. Material: Al alloy.
- (3) Spacer (16) -- Alodize and apply primer, BMS 10-11, type 1 (SRF-2.901) all over. Material: Al alloy.
- (4) Bracket (19) -- Chromic acid anodize (F-2.26) all over. Apply primer, BMS 10-11, type 1 (SRF-12.205) and enamel, BMS 10-11, type 2 color 702 white (SRF-12.64) except omit primer and enamel in bearing bores and 0.323 diameter rig pin holes. Material: Al alloy.

C. Replacement

- (1) Replace cotter pin (1) and any parts unserviceable or damaged beyond allowable repair.
- (2) Bearing (18) -- Install replacement bearing and roller swage per 20-50-03.

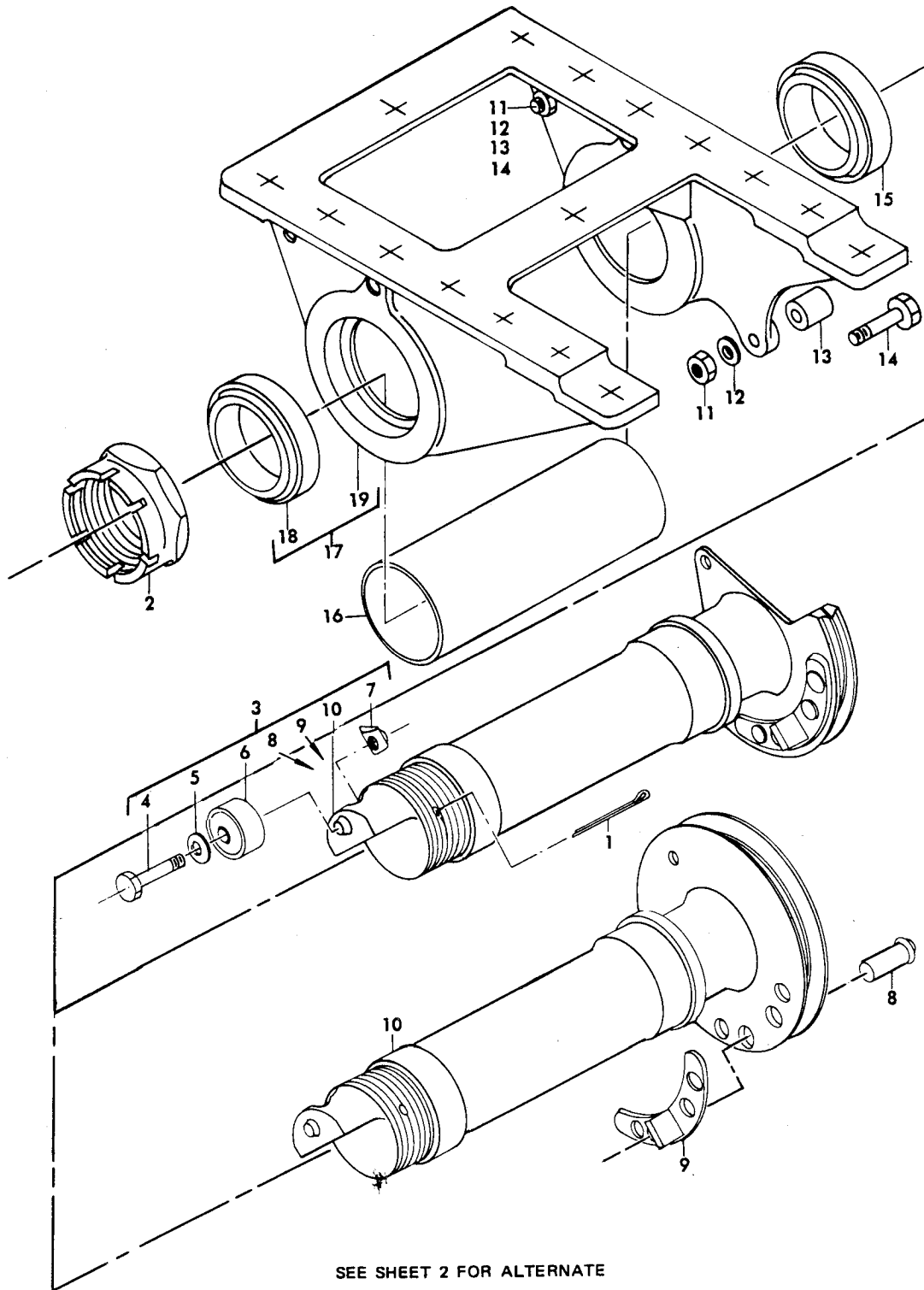
6. ASSEMBLY (Fig. 2)

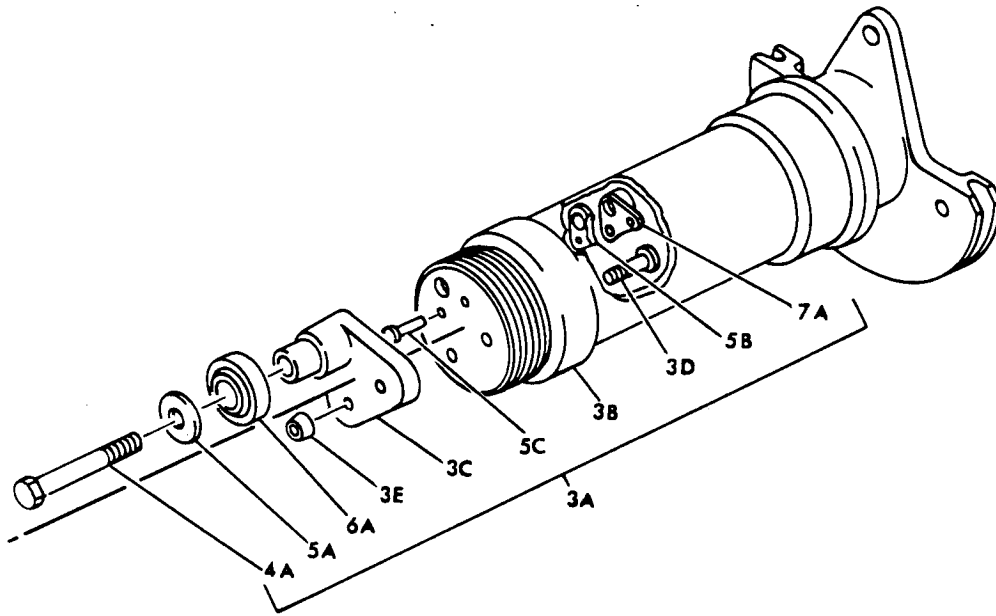
- A. Install spacer (16) and bearing (15) in bracket (19).
- B. Assemble bolts (14), spacers (13), washers (12) and nuts (11) on bracket (17).
- C. Position torque tube (10 or 3B) in bearings on bracket. Secure with nut (2) and cotter pin (1).
- D. Assemble parts (4 thru 7A) as applicable, on torque tube (10 or 3B).
- E. Check that torque tube and bearing move freely.

7. STORAGE INSTRUCTIONS (Fig. 2)

- A. Coat surface of bearing (6, 6A) with MIL-G-23827 grease.
- B. Store and protect assembly in accordance with standard industry practices and the information contained in 20-44-02 and 20-70-01.

8. ILLUSTRATED PARTS LIST





ALTERNATE TO SHEET 1

Manual Nose Gear Extension Mechanism Assembly
Figure 2 (Sheet 2)

FIG. & ITEM NO.	PART NO.	AIRLINE PART NUMBER	N O M E N C L A T U R E							USE CODE	QTY PER ASSY
			1	2	3	4	5	6	7		
2--	65-46329-2		MECHANISM ASSY, MANUAL NOSE GEAR EXTENSION							A	RF
	65-46329-6		MECHANISM ASSY, MANUAL NOSE GEAR EXTENSION							B	RF
	65-46329-12		MECHANISM ASSY, MANUAL NOSE GEAR EXTENSION							C	RF
	65-46329-13		MECHANISM ASSY, MANUAL NOSE GEAR EXTENSION							D	RF
	65-46329-15		MECHANISM ASSY, MANUAL NOSE GEAR EXTENSION							E	RF
	65-46329-17		MECHANISM ASSY, MANUAL NOSE GEAR EXTENSION							F	RF
	65-46329-19		MECHANISM ASSY, MANUAL NOSE GEAR EXTENSION							G	RF
	65-46329-21		MECHANISM ASSY, MANUAL NOSE GEAR EXTENSION							H	RF
1	MS24665-380		. PIN, COTTER								1
2	MS21025-32		. NUT, CASTELLATED							A-D	1
2	69-40958-1		. RETAINER							EFG	1
3	65-46329-8		. TUBE ASSY, TORQUE							A	1
3	65-46329-9		. TUBE ASSY, TORQUE							B	1
3	65-46329-10		. TUBE ASSY, TORQUE							C	1
3	65-46329-11		. TUBE ASSY, TORQUE							D	1
3	65-46329-16		. TUBE ASSY, TORQUE							E	1
3	65-46329-18		. TUBE ASSY, TORQUE							F	1
3	65-46329-20		. TUBE ASSY, TORQUE							GH	1
3A	69-62289-1		. . TUBE ASSY (USED ON 65-46329-18)								1
3A	69-62289-4		. . TUBE ASSY (USED ON 65-46329-20)								1
3B	65-46339-8		. . . TUBE (USED ON 69-62289-1)								1
3B	65-46339-10		. . . TUBE (USED ON 69-62289-4)								1
3C	69-62288-1		. . . FITTING (USED ON 69-62289-1,-4)								1
3D	BACB30DX8-8		. . . BOLT (USED ON 69-62289-1,-4)								2
3E	NAS1080R8		. . . COLLAR (USED ON 69-62289-1,-4)								2
4	NAS1104-13		. . BOLT (USED ON 65-46329-8,-9)								1
4	BACB30NF4-13		. . BOLT (USED ON 65-46329-10,-11,-16)								1
4A	BACB30NF5-27		. . . BOLT (USED ON 69-62289-1,-4)								1
5	BACW10Q4C		. . . WASHER (USED ON 65-46329-8,-9,-10,-11,-16)								1
5A	69-62289-3		. . . WASHER (USED ON 69-62289-1,-4)								1
5B	69-62289-501		. . . SPACER (USED ON 69-62289-1,-4)								1
5C	BACR15BA4D		. . . RIVET (USED ON 69-62289-1,-4)								2
6	BACB10A338		. . BEARING (USED ON 65-46329-8,-9,-10,-11,-16)								1
6A	MS21233-10		. . BEARING (USED ON 69-62289-1,-4)								1

FIG. & ITEM NO.	PART NO.	AIRLINE PART NUMBER	N O M E N C L A T U R E							USE CODE	QTY PER ASSY
			1	2	3	4	5	6	7		
2- 7	NAS577-4		.	.	NUT, BARREL (USED ON 65-46329-8, -9,-10,-11,-16)						1
7A	BACN10JP5C		.	.	NUT (USED ON 69-62289-1,-4)						1
8	MS20470D6		.	.	RIVET						4
9	66-24168-2		.	.	STOP						1
10	65-46339-1		.	.	TUBE (USED ON 65-46329-8)						1
10	65-46339-3		.	.	TUBE (USED ON 65-46329-9)						1
10	65-46339-5		.	.	TUBE (USED ON 65-46329-10)						1
10	65-46339-4		.	.	TUBE (USED ON 65-46329-10)(OPT)						1
10	65-46339-6		.	.	TUBE (USED ON 65-46329-11)						1
10	65-46339-7		.	.	TUBE (USED ON 65-46329-16)						1
11	BACN10JC3		.		NUT (REPLS NAS679A3W)				AD		2
11	BACN10JC3		.		NUT (REPLS NAS679A3W)				BC		1
11	BACN10JC3		.		NUT				E-H		2
12	AN960PD10L		.		WASHER				AD		2
12	AN960PD10L		.		WASHER				BC		1
12	AN960PD10L		.		WASHER				E-H		1
13	NAS42DD6-100		.		SPACER				AC		2
13	NAS42DD6-100		.		SPACER				BD		1
13	BACS18K10-100N		.		SPACER				E-H		1
14	NAS1103-27		.		BOLT				AD		2
14	NAS1103-27		.		BOLT				BC		1
14	BACB30NF3-27		.		BOLT				E-H		1
15	BACB10BW33		.		BEARING (REPLS BACB10A554)				A-G		1
15	BACB10FR33		.		BEARING (PREF)				A-G		1
15	BACB10FR33		.		BEARING				H		
16	66-24164-1		.		SPACER						1
17	65-46338-1		.		BRACKET ASSY				A-G		1
17	65-46338-4		.		BRACKET ASSY				H		1
18	BACB10BW33		.	.	BEARING (REPLS BACB10A554) (USED ON 65-46338-1)						1
18	BACB10FR33		.	.	BEARING (PREF)(USED ON 65-46338-1)						1
18	BACB10FR33		.	.	BEARING (USED ON 65-46338-4)						1
19	65-46338-2		.	.	BRACKET						1