

**CHAPTER**

**07**

**LIFTING AND SHORING**



757

ILLUSTRATED TOOL AND EQUIPMENT MANUAL

CHAPTER 07  
LIFTING AND SHORING

Subject/Page	Date	Subject/Page	Date	Subject/Page	Date
EFFECTIVE PAGES					
1	Sep 20/2008				
2	BLANK				
07-CONTENTS					
1	Sep 20/2006				
2	BLANK				
07-00-01					
1	Sep 20/2006				
2	Sep 20/2006				
07-00-02					
1	Sep 20/2006				
2	Sep 20/2006				
07-00-03					
1	Sep 20/2006				
2	Sep 20/2006				
07-00-04					
1	Sep 20/2007				
2	BLANK				
07-00-05					
1	Sep 20/2007				
2	Sep 20/2006				
07-00-06					
1	Sep 20/2007				
2	Sep 20/2007				
07-00-07					
1	Sep 20/2006				
2	Sep 20/2006				
07-20-01					
1	Sep 20/2006				
2	Sep 20/2006				

A = Added, R = Revised, O = Overflow, D = Deleted

# 07-EFFECTIVE PAGES



757

## ILLUSTRATED TOOL AND EQUIPMENT MANUAL

### TABLE OF CONTENTS

<u>Subject</u>	<u>Title</u>	<u>Part No.</u>
<b>07-</b>	<b>LIFTING AND SHORING</b>	
07-00-01	SLING ASSEMBLY - FUSELAGE LIFTING	F70244-17
07-00-02	JACKING ADAPTER - FORWARD BODY	B07001-7
07-00-03	JACKING BAR SET - MAIN LANDING GEAR AXLE	B07003-1, -13, -15
07-00-04	ADAPTER - AIRPLANE JACKING	F80060-6
07-00-05	JACKING ADAPTER - AIRPLANE STABILIZATION	B07002-1
07-00-06	JACKING BAR SET - NOSE LANDING GEAR AXLE	B07004-1, -12
07-00-07	JACKING BAR EQUIPMENT-MAIN LANDING GEAR AXLE	B07008-1
07-20-01	TETHER ATTACHMENT FITTINGS - STRUT AIRPLANE RECOVERY	B07005-1

# 07-CONTENTS

Page 1  
Sep 20/2006

D634N501

**757**  
**ILLUSTRATED TOOL AND EQUIPMENT MANUAL**

**PART NUMBER: F70244-17**

**NAME:** SLING ASSEMBLY - FUSELAGE LIFTING

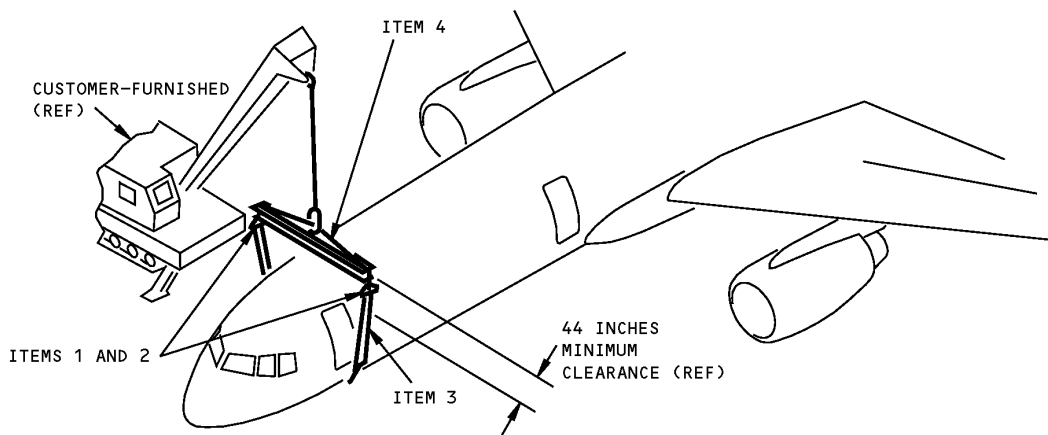
**AIRPLANE MAINTENANCE:** YES

**COMPONENT MAINTENANCE:** NO

**USAGE & DESCRIPTION:** This tool is used to lift the fuselage of damaged airplanes as part of a recovery operation. The tool has a spreader bar made of aluminum plate and channels. Shackles and fittings attach the 12-inch wide strap, which fits under the airplane, to the spreader bar. This tool is used with an overhead crane.

**WEIGHT:** 390 lbs (177 kg)

**DIMENSIONS:** 8 x 36 x 176 inches (203 x 914 x 4470 mm)



**Fuselage Lifting Sling Assembly**  
**Figure 1**

<b>REPAIRABLE/REPLACEABLE PARTS</b>			
<b>ITEM NO.</b>	<b>PART NO.</b>	<b>NOMENCLATURE</b>	<b>VENDOR CODE</b>
1	-4	SAFETY SHACKLE	
2	-12	SAFETY SHACKLE	
3	-19	BAND ASSEMBLY	



757

ILLUSTRATED TOOL AND EQUIPMENT MANUAL

REPAIRABLE/REPLACEABLE PARTS			
ITEM NO.	PART NO.	NOMENCLATURE	VENDOR CODE
4	F70308-2	PROOF LOAD TAG	



757

## ILLUSTRATED TOOL AND EQUIPMENT MANUAL

PART NUMBER: B07001-7

**NAME:** JACKING ADAPTER - FORWARD BODY

**AIRPLANE MAINTENANCE:** YES

**COMPONENT MAINTENANCE:** NO

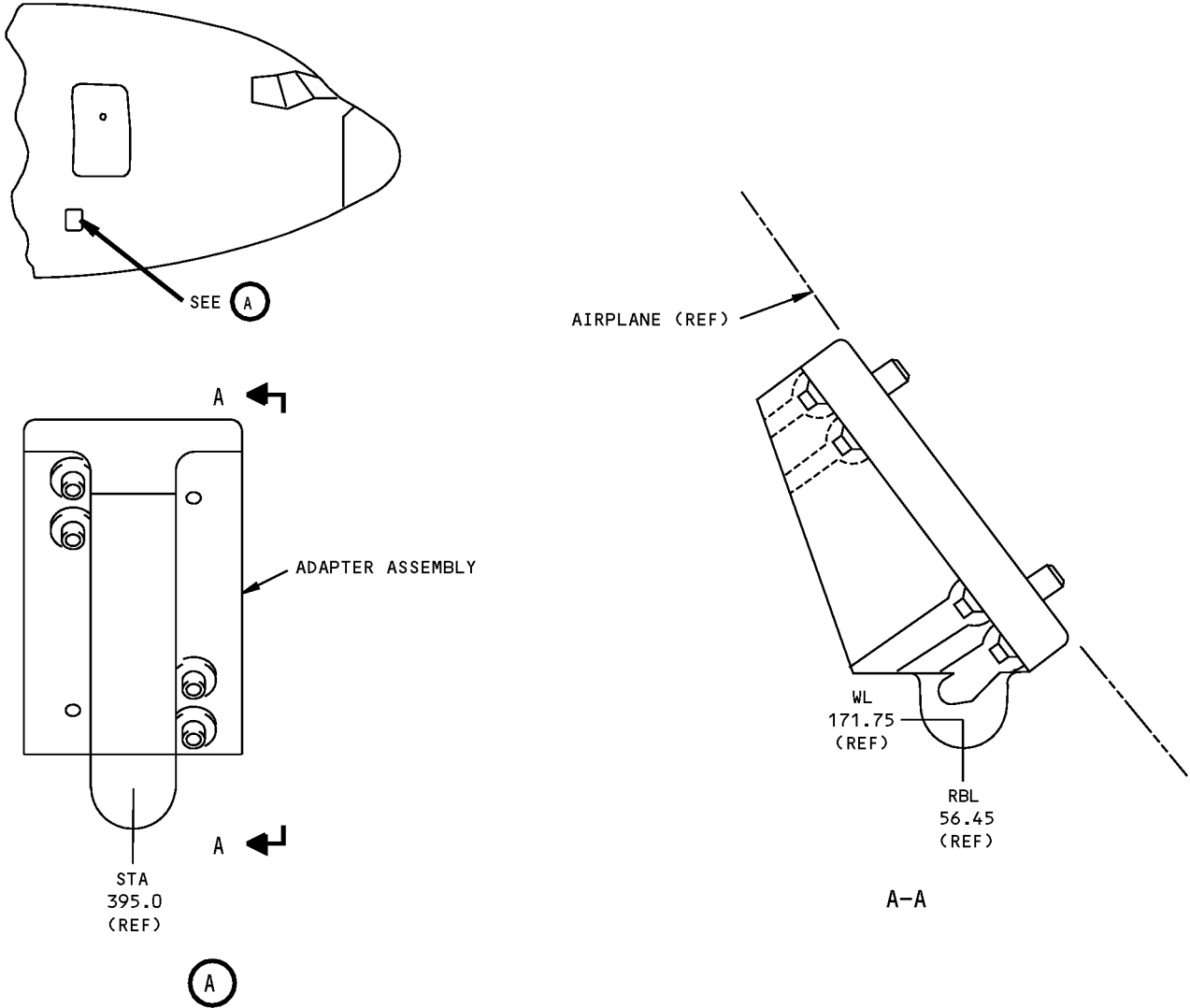
**USAGE & DESCRIPTION:** This jack adapter fits into the airplane forward body and into a customersupplied hydraulic jack during ground maintenance procedures. The jacking adapter is a 0.75-inch spherical radius ball that nests into a customer-supplied tripod jack. Refer to AMM 07-00-00 for further usage instructions.

**WEIGHT:** 5.5 lbs (2.5 kg)

**DIMENSIONS:** 6 x 6 x 8 inches (152 x 152 x 203 mm)

**NOTE:** B07001-7 supersedes B07001-1.

**757  
ILLUSTRATED TOOL AND EQUIPMENT MANUAL**



**Forward Body Jacking Adapter  
Figure 1**

**ILLUSTRATED TOOL AND EQUIPMENT MANUAL**

**PART NUMBER: B07003-1, -13, -15**

**NAME:** JACKING BAR SET - MAIN LANDING GEAR AXLE

**AIRPLANE MAINTENANCE:** YES

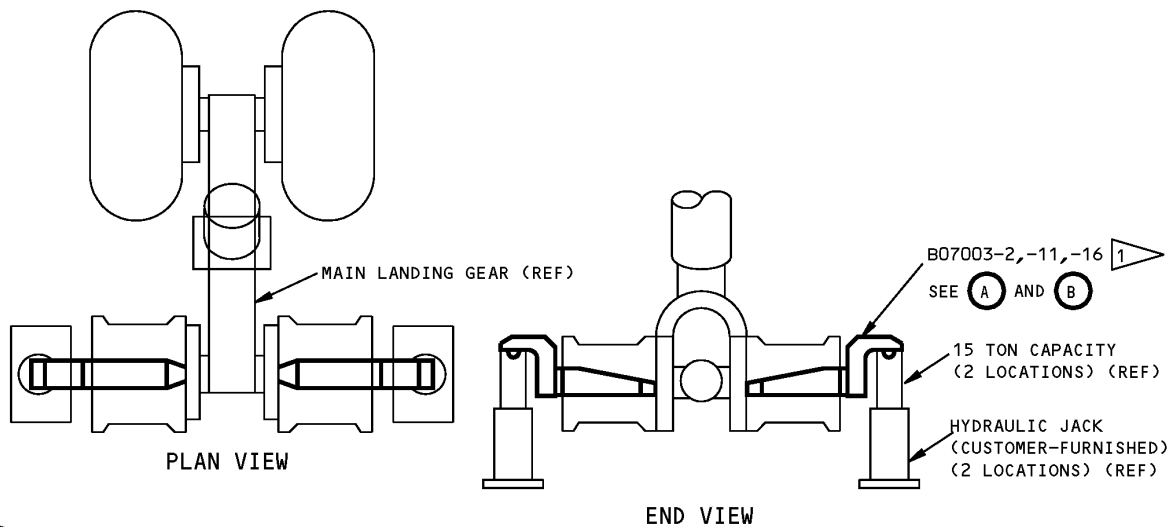
**COMPONENT MAINTENANCE:** NO

**USAGE & DESCRIPTION:** The -15 is used on 757-200 airplanes. The -1 and -13 are used on all 757 airplanes. The -1 and -13 cannot be used on heavy weight gear. This tool is used to jack the Main Landing Gear (MLG) when the tires are not installed or flat. The jacking bar set is used with customer-supplied standard hydraulic jacks of 15 ton capacity. When sufficient ground clearance is achieved, a standard gear jack is used. Refer to AMM 07-11-03 for further usage instructions. Each tool set consists of two jacking bars and a storage box.

**WEIGHT:** 100 lbs (45 kg)

**DIMENSIONS:** 4 x 10 x 33 inches (102 x 254 x 838 mm)

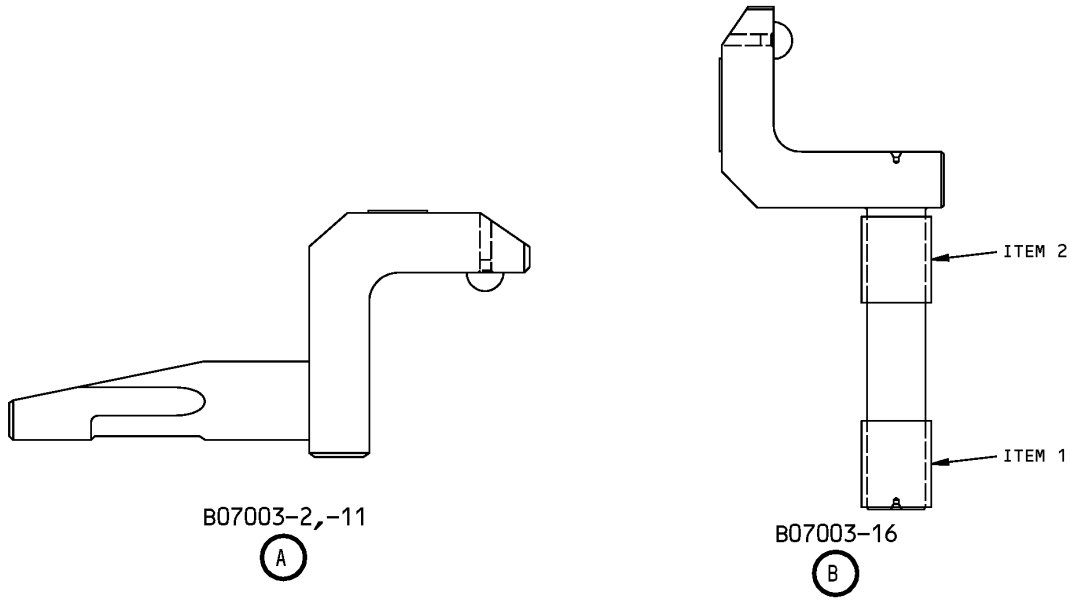
**NOTE:** B07008-1 replaces B07003-15 for future procurement.  
 B07008-1 is preferred for future procurement.  
 B07003-15 replaces B07003-13,-1 for future procurement.



**Main Landing Gear Axle Jacking Bar Set  
 Figure 1 (Sheet 1 of 2)**



ILLUSTRATED TOOL AND EQUIPMENT MANUAL



Main Landing Gear Axle Jacking Bar Set  
Figure 1 (Sheet 2 of 2)

REPAIRABLE/REPLACEABLE PARTS			
ITEM NO.	PART NO.	NOMENCLATURE	VENDOR CODE
1	-19	BUSHING	V8L912
2	-20	BUSHING	V8L912

**757**  
**ILLUSTRATED TOOL AND EQUIPMENT MANUAL**

**PART NUMBER: F80060-6**

**NAME:** ADAPTER - AIRPLANE JACKING

**AIRPLANE MAINTENANCE:** YES

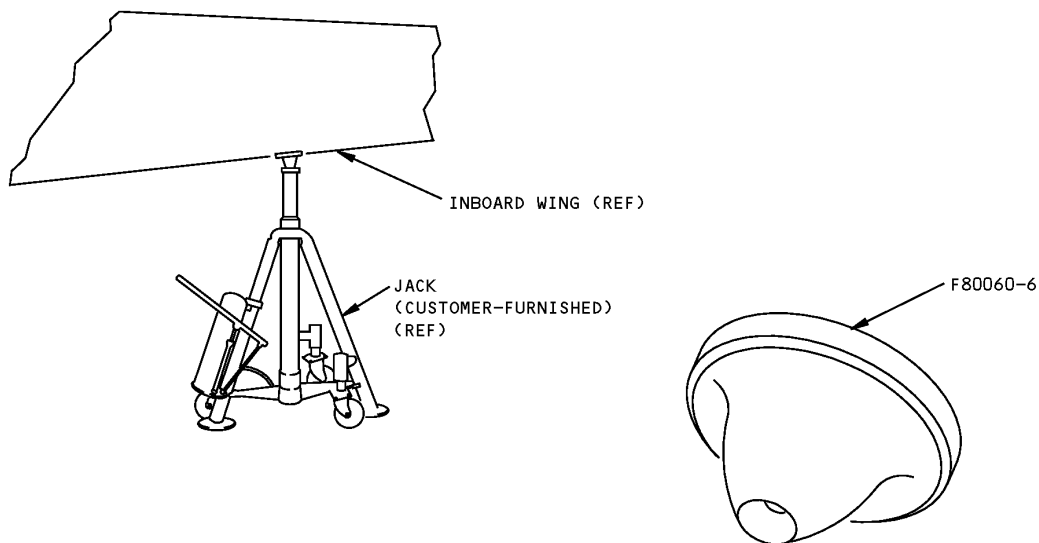
**COMPONENT MAINTENANCE:** NO

**USAGE & DESCRIPTION:** This tool is used on all 757 airplanes to provide a jacking pad at a matching point on the underside of each inboard wing. The adapter is used with a customer supplied tripod jack.

The F80060-6 consists of:

F80060-6		
QUANTITY	NOMENCLATURE	PART NUMBER
1	SCREW	NAS514P1032-24
1	RETAINING RING	MS16625-1045
1	ADAPTER	F80060-7

**DIMENSIONS:** 2.38 inch diameter x 3 inches (60 mm diameter x 76 mm)



**Airplane Jacking Adapter  
Figure 1**



757

**ILLUSTRATED TOOL AND EQUIPMENT MANUAL**

**PART NUMBER: B07002-1**

**NAME:** JACKING ADAPTER - AIRPLANE STABILIZATION

**AIRPLANE MAINTENANCE:** YES

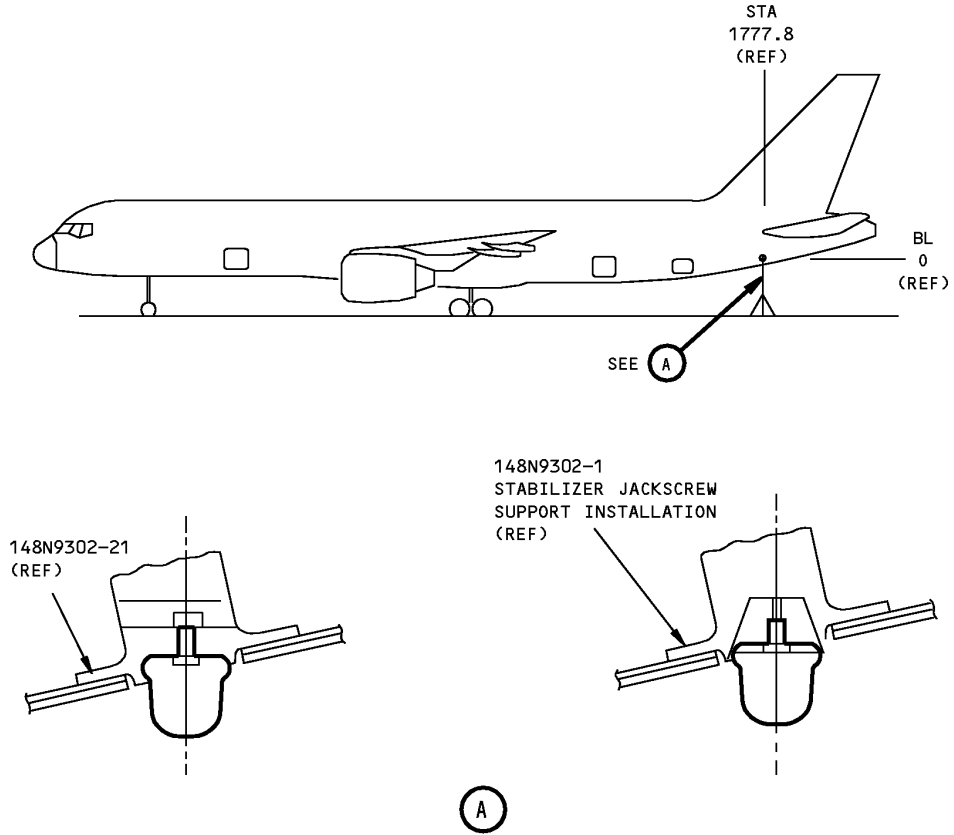
**COMPONENT MAINTENANCE:** NO

**USAGE & DESCRIPTION:** The B07002-1 Jacking Adapter is used on all 757 airplanes. This tool consists of a steel spherical ball that mates to a customer supplied tripod jack and a screw which secures into existing airplane support structure. The tool is used to stabilize the airplane during jacking operations. The B07002-1 consists of a B07002-2 Adapter assembly contained in storage box.

**WEIGHT:** 0.85 lbs (0.39 kg)

**DIMENSIONS:** 3 x 6 x 6 inches (76 x 152 x 152 mm)

**757**  
**ILLUSTRATED TOOL AND EQUIPMENT MANUAL**



**Airplane Stabilization Jack Adapter**  
**Figure 1**



757

## ILLUSTRATED TOOL AND EQUIPMENT MANUAL

**PART NUMBER: B07004-1, -12**

**NAME:** JACKING BAR SET - NOSE LANDING GEAR AXLE

**AIRPLANE MAINTENANCE:** YES

**COMPONENT MAINTENANCE:** NO

**USAGE & DESCRIPTION:** The B07004-1 or -12, Jacking Bar set is used on all 757 airplanes. This tool consists of two steel jacking bar assemblies that are used with customer supplied hydraulic jacks. The tool is used specifically on nose landing gear without wheels; the jacking bars and jacks raise the gear for sufficient ground clearance to use standard customer supplied hydraulic jacks. The B07004-1 is used on landing gear with 162N1211 bushing. The B07004-12 is used on landing gear without 162N1211 bushing.

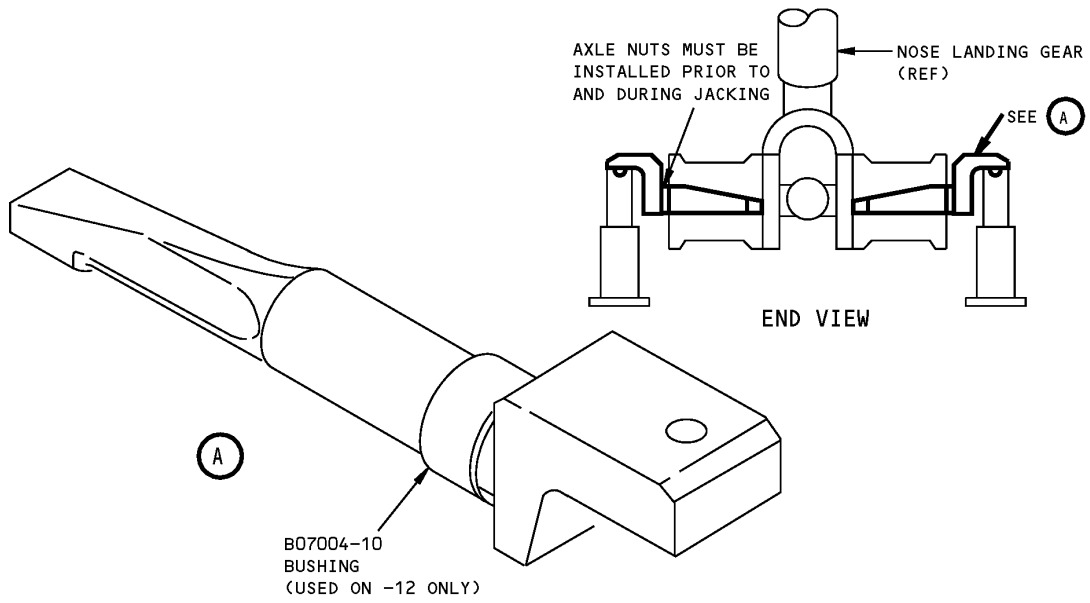
The B07004 Jacking Bar Set consists of:

<b>B07004-1</b>		
<b>QUANTITY</b>	<b>NOMENCLATURE</b>	<b>PART NUMBER</b>
2	JACKING BAR ASSEMBLY	B07004-2
1	STORAGE BOX ASSEMBLY	B07004-13

<b>B07004-12</b>		
<b>QUANTITY</b>	<b>NOMENCLATURE</b>	<b>PART NUMBER</b>
2	JACKING BAR ASSEMBLY	B07004-11
1	STORAGE BOX ASSEMBLY	B07004-13

**WEIGHT:** 36 lbs (16 kg)

**DIMENSIONS:** 3 x 8 x 18 inches (76 x 203 x 457 mm)



**Nose Landing Gear Axle Jacking Bar Set  
Figure 1**



757

## ILLUSTRATED TOOL AND EQUIPMENT MANUAL

**PART NUMBER: B07008-1**

**NAME:** JACKING BAR EQUIPMENT-MAIN LANDING GEAR AXLE

**AIRPLANE MAINTENANCE:** YES

**COMPONENT MAINTENANCE:** NO

**USAGE & DESCRIPTION:** This tool is used to jack the Main Landing Gear (MLG) when tires are not installed or flat. When sufficient ground clearance is achieved, a standard gear jack is used. This tool is used on all 757 airplanes. Refer to AMM 07-11-03 for further usage instructions. This tool is contained in a storage box assembly and consists of the following:

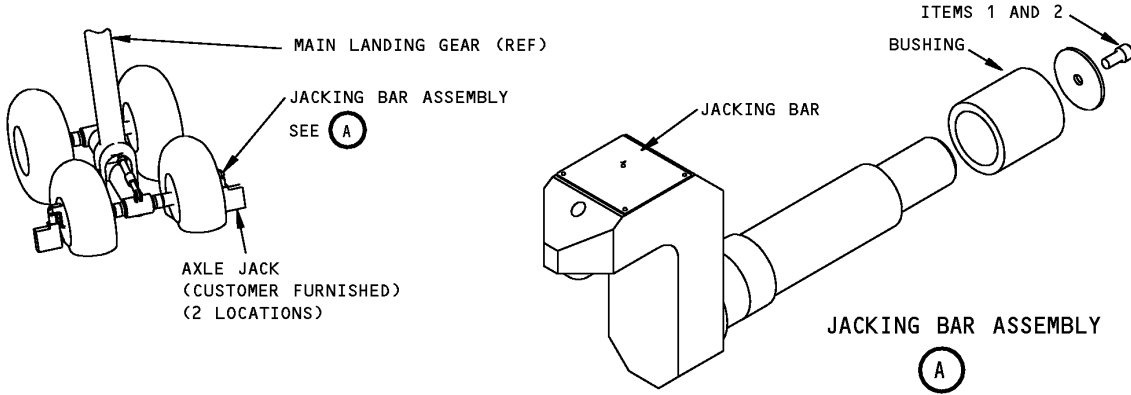
QUANTITY	NOMENCLATURE	PART NUMBER
2	JACKING BAR ASSEMBLY	B07008-2
2	JACKING PAD	B07008-5
2	RETAINING WASHER	B07008-6
2	BUSHING ASSEMBLY	B07008-3
2	BUSHING ASSEMBLY	B07008-4
2	SOCKET HEAD SCREW	MS16997-95

**WEIGHT:** 100 lbs (45 kg)

**DIMENSIONS:** 4 x 10 x 20 inches (102 x 254 x 508 mm)

**NOTE:** B07008-1 replaces B07003-15 for future procurement.

ILLUSTRATED TOOL AND EQUIPMENT MANUAL



Main Landing Gear Axle Jacking Bar Equipment  
Figure 1

REPAIRABLE/REPLACEABLE PARTS			
ITEM NO.	PART NO.	NOMENCLATURE	VENDOR CODE
1	MS16997-95	SOCKET HEAD CAP SCREW	
2	-6	RETAINING WASHER	





**757**  
**ILLUSTRATED TOOL AND EQUIPMENT MANUAL**

**PART NUMBER: B07005-1**

**NAME:** TETHER ATTACHMENT FITTINGS - STRUT AIRPLANE RECOVERY

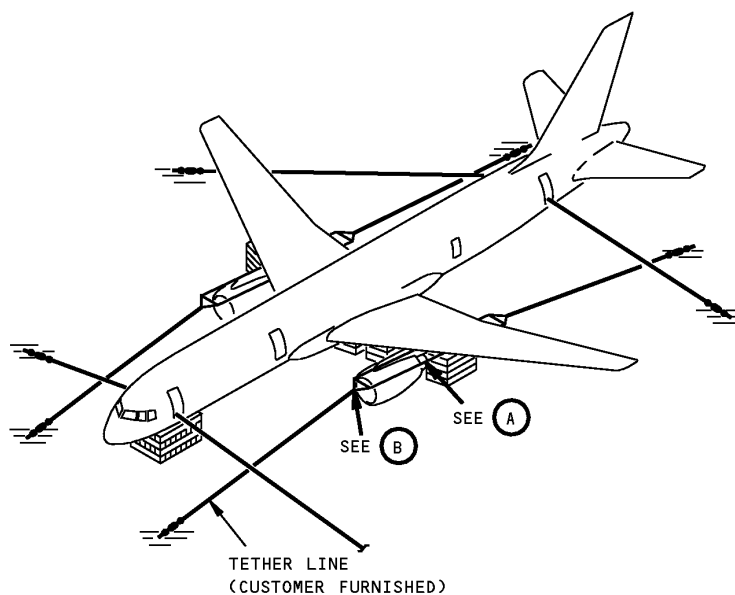
**AIRPLANE MAINTENANCE:** YES

**COMPONENT MAINTENANCE:** NO

**USAGE & DESCRIPTION:** This tool provides the means of stabilizing the airplane during recovery and for airplane tiedown during inclement weather conditions. The link assemblies secure the adapter cables to the engine struts. The tool consists of 4 adapter assemblies and 4 link assemblies, 8 washers, 8 bolts and a box.

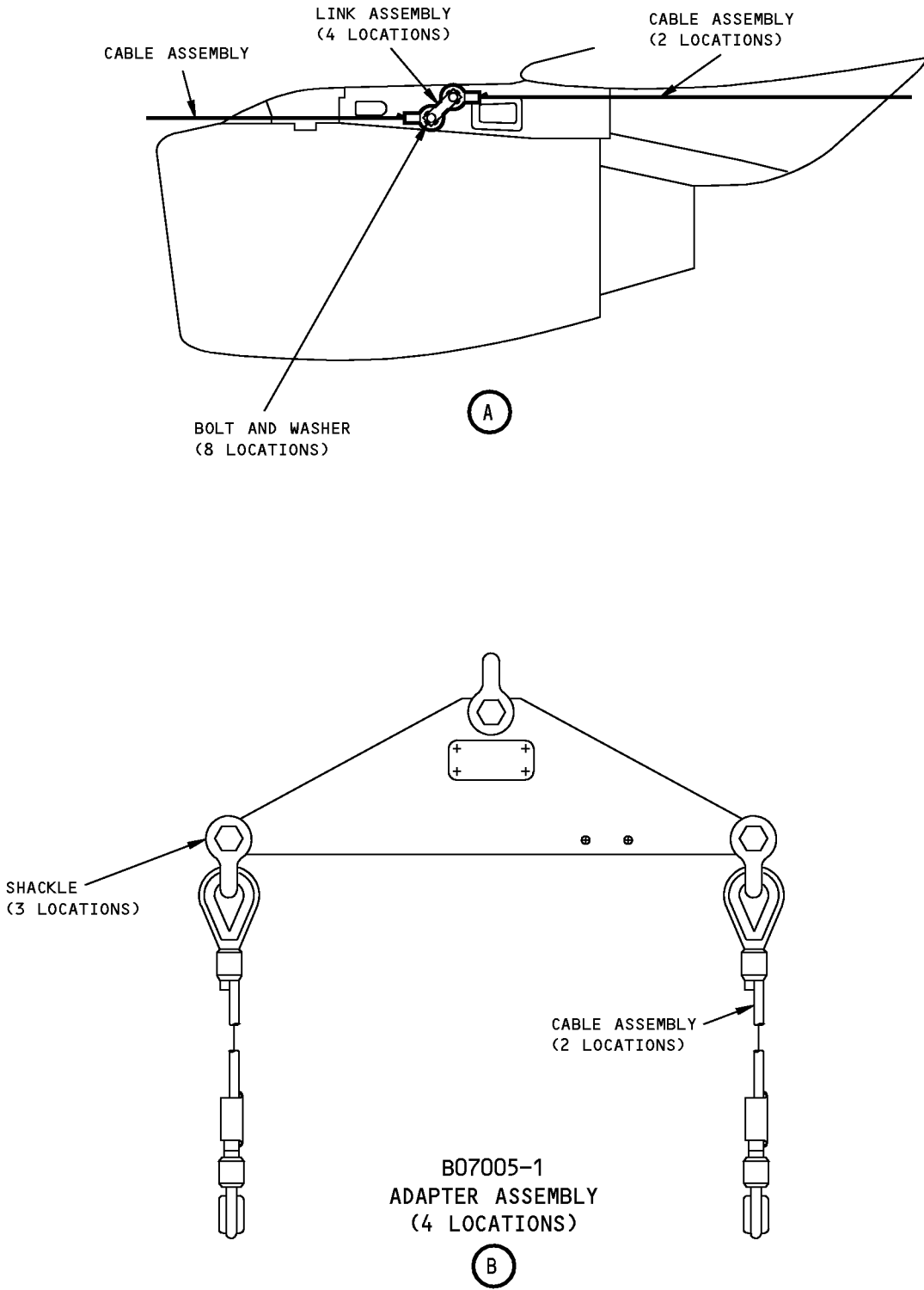
**WEIGHT:** 60 lbs (27 kg)

**DIMENSIONS:** 6 x 20 x 30 inches (152 x 508 x 762 mm)



**Strut Airplane Recovery Tether Attachment Fittings**  
**Figure 1 (Sheet 1 of 2)**

**ILLUSTRATED TOOL AND EQUIPMENT MANUAL**



**Strut Airplane Recovery Tether Attachment Fittings  
Figure 1 (Sheet 2 of 2)**