

CHAPTER

12

SERVICING



757

ILLUSTRATED TOOL AND EQUIPMENT MANUAL

CHAPTER 12 SERVICING

Subject/Page	Date	Subject/Page	Date	Subject/Page	Date
EFFECTIVE PAGES					
1	Sep 20/2008				
2	BLANK				
12-CONTENTS					
1	Sep 20/2007				
2	BLANK				
12-00-01					
1	Sep 20/2006				
2	Sep 20/2006				
12-00-02					
1	Sep 20/2006				
2	BLANK				
12-00-03					
1	Sep 20/2007				
2	Sep 20/2006				
12-10-01					
1	Sep 20/2006				
2	BLANK				
12-10-02					
1	Sep 20/2006				
2	Sep 20/2006				
12-10-03					
1	Sep 20/2006				
2	BLANK				
12-10-04					
1	Sep 20/2006				
2	Sep 20/2006				
12-20-01					
1	Sep 20/2006				
2	Sep 20/2006				
12-20-02					
1	Sep 20/2006				
2	BLANK				

A = Added, R = Revised, O = Overflow, D = Deleted

12-EFFECTIVE PAGES

Page 1
Sep 20/2008

D634N501



757

ILLUSTRATED TOOL AND EQUIPMENT MANUAL

TABLE OF CONTENTS

<u>Subject</u>	<u>Title</u>	<u>Part No.</u>
12-	SERVICING	
12-00-01	INFLATION TOOL - TIRE	F70199-1, -18
12-00-02	INFLATION TOOL - STRUT	F70200-14
12-00-03	LADDER ASSEMBLY - ACCESS DOOR, E/E BAY	B12007-35, -37
12-10-01	RECEPTACLE - FUEL SAMPLING	B12004-1
12-10-02	DRAIN EQUIPMENT - SHOCK STRUT - MLG/NLG	A32066-1
12-10-03	GUARD - INLET, ENGINE RUN-UP	A71042-1, -2, -29
12-10-04	HOSE ADAPTER - SUMP FUEL DRAIN	B28002-1
12-20-01	DRAIN HOSE - SURGE TANK SUMP	C12002-7
12-20-02	ADAPTER - LUBRICATION, SPOILER OUTER HINGE LINK ASSEMBLY	B12006-1

12-CONTENTS

Page 1
Sep 20/2007

D634N501



757

ILLUSTRATED TOOL AND EQUIPMENT MANUAL

PART NUMBER: F70199-1, -18

NAME: INFLATION TOOL - TIRE

AIRPLANE MAINTENANCE: YES

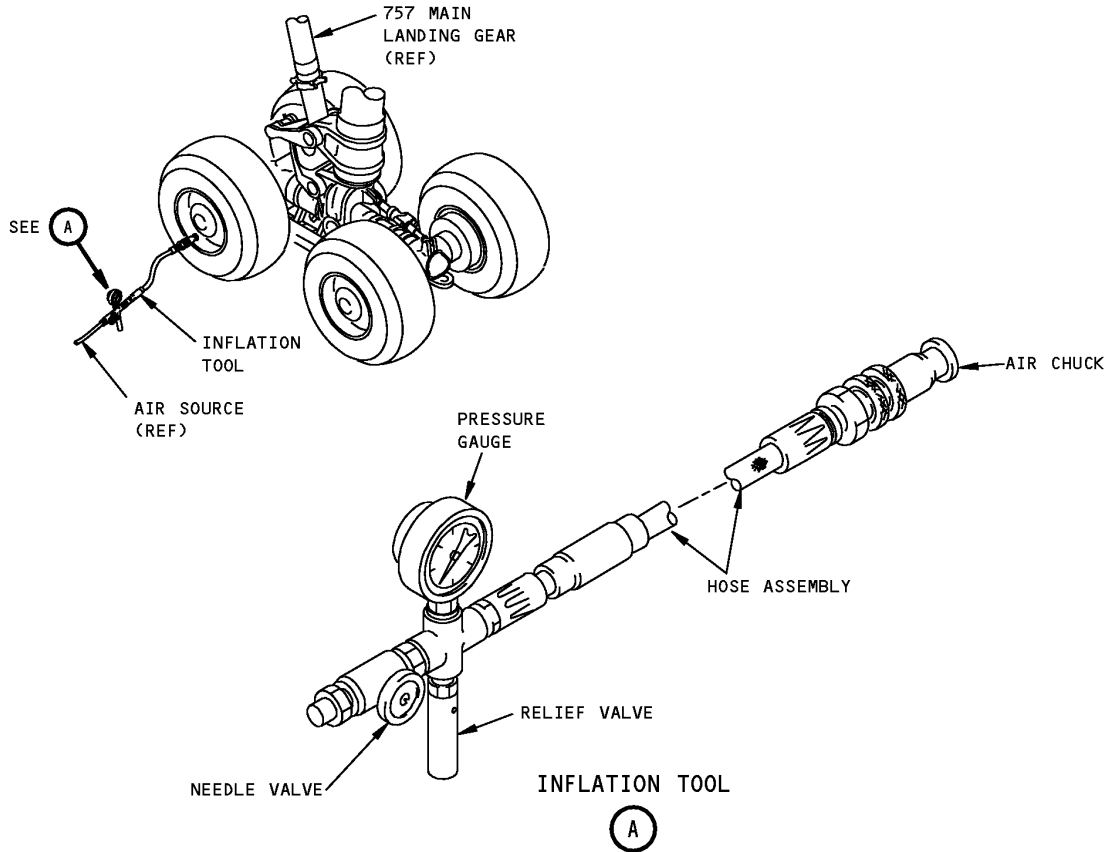
COMPONENT MAINTENANCE: YES

USAGE & DESCRIPTION: This tool is used to inflate the landing gear tires to a specified pressure. The -18 is used for the large valve T and RA core -2 (0.482-26 THD). The -1 is used for a small valve T and RA core C-4 (0.302-32 THD). Each of -1 and -18 consists of a pressure gauge, a needle valve, a hose assembly, a relief valve and tube fittings. The -18 also includes a -12 or 4660A air chuck. The -1 includes a -6 air chuck. Refer to AMM 12-15-03 for complete instructions.

WEIGHT: 1 lb (0.45 kg)

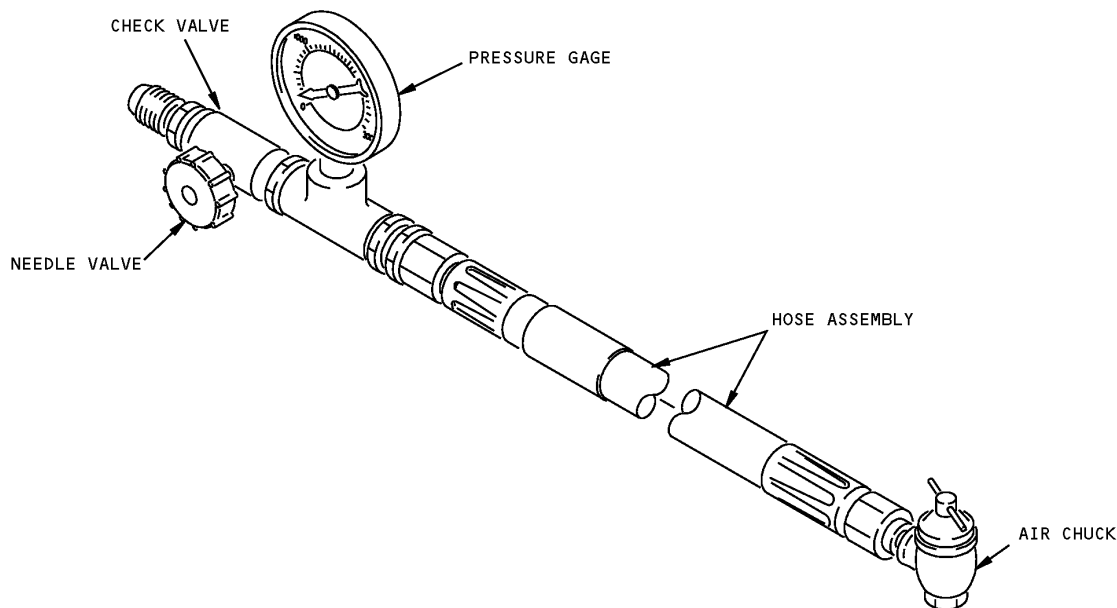
DIMENSIONS: 2 x 12 x 12 inches (51 x 305 x 305 mm)

757
ILLUSTRATED TOOL AND EQUIPMENT MANUAL



Tire Inflation Tool
Figure 1

ILLUSTRATED TOOL AND EQUIPMENT MANUAL

PART NUMBER: F70200-14**NAME:** INFLATION TOOL - STRUT**AIRPLANE MAINTENANCE:** YES**COMPONENT MAINTENANCE:** YES**USAGE & DESCRIPTION:** The inflation tool is used to inflate the landing gear struts. The tool consists of a needle valve, a pressure gage, a hose assembly, an air chuck, a check valve and related tube fittings.**DIMENSIONS:** 2 x 12 x 18 inches (51 x 305 x 457 mm)

**Strut Inflation Tool
Figure 1**



757

ILLUSTRATED TOOL AND EQUIPMENT MANUAL

PART NUMBER: B12007-35, -37

NAME: LADDER ASSEMBLY - ACCESS DOOR, E/E BAY

AIRPLANE MAINTENANCE: YES

COMPONENT MAINTENANCE: NO

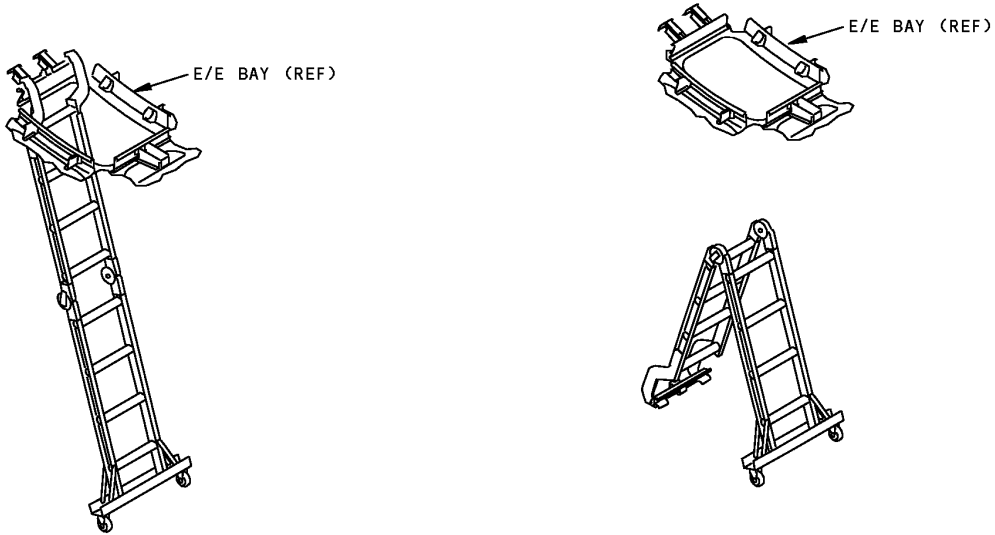
USAGE & DESCRIPTION: This tool is used to provide access to the main E/E bay on all 757 model airplanes.

WEIGHT: 50 lbs (23 kg)

DIMENSIONS: 12 x 28 x 58 inches (305 x 711 x 1473 mm)

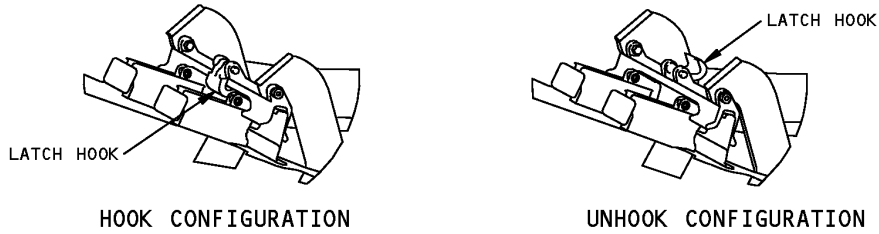
NOTE: B12007 supersedes B12005.
B12007-35 supersedes B12007-1
B12007-37 replaces B12007-35 for future procurement.

757
ILLUSTRATED TOOL AND EQUIPMENT MANUAL



EXTENSION LADDER CONFIGURATION

**STEPLADDER CONFIGURATION
(TO OPEN AND CLOSE ACCESS DOOR)**

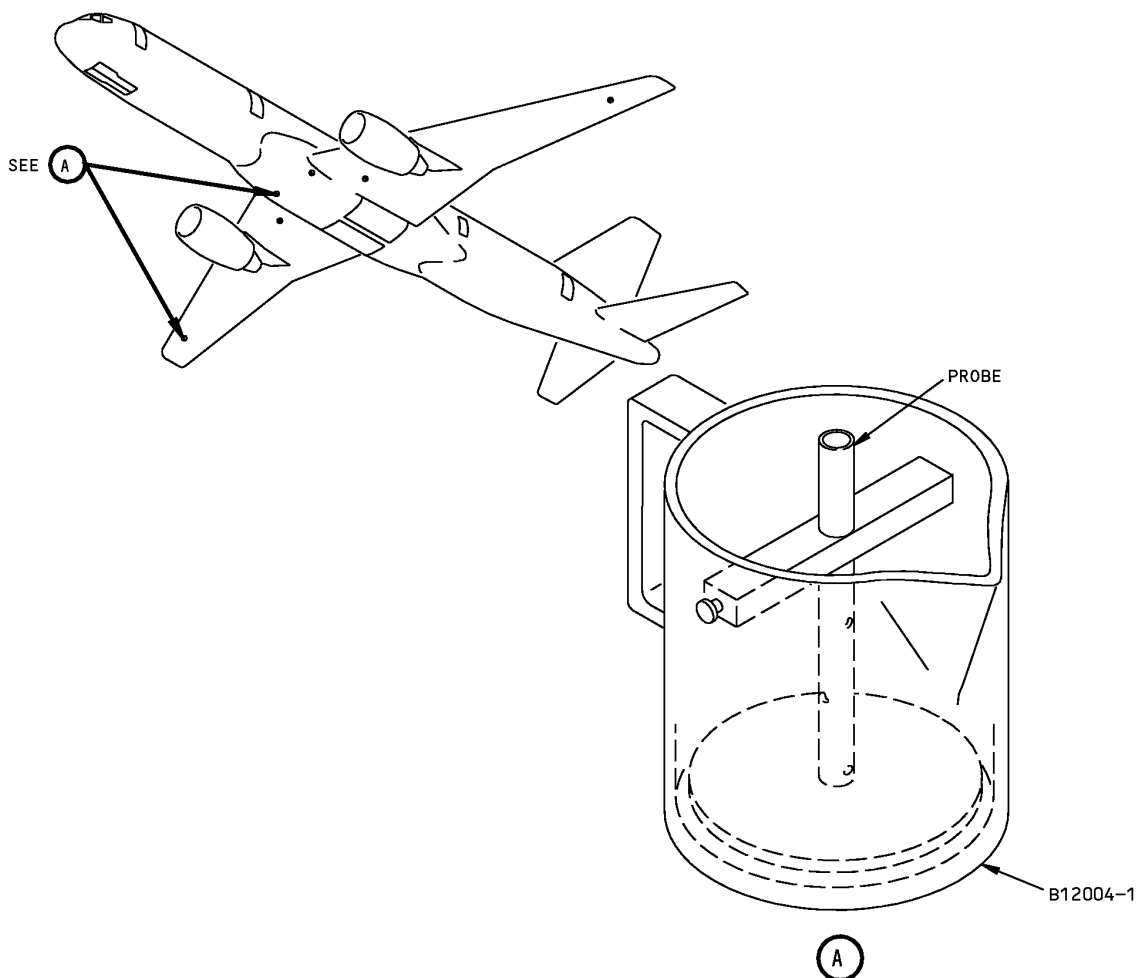


HOOK CONFIGURATION

UNHOOK CONFIGURATION

**E/E Bay Access Door Ladder Assembly
Figure 1**

ILLUSTRATED TOOL AND EQUIPMENT MANUAL

PART NUMBER: B12004-1**NAME:** RECEPTACLE - FUEL SAMPLING**AIRPLANE MAINTENANCE:** YES**COMPONENT MAINTENANCE:** NO**USAGE & DESCRIPTION:** This tool is a container with a probe which, when inserted into a drain valve, releases fuel for sampling.**DIMENSIONS:** 6-inch diameter x 8 inches (152 mm diameter x 203 mm)

**Fuel Sampling Receptacle
Figure 1**

ILLUSTRATED TOOL AND EQUIPMENT MANUAL

PART NUMBER: A32066-1

NAME: DRAIN EQUIPMENT - SHOCK STRUT - MLG/NLG

AIRPLANE MAINTENANCE: YES

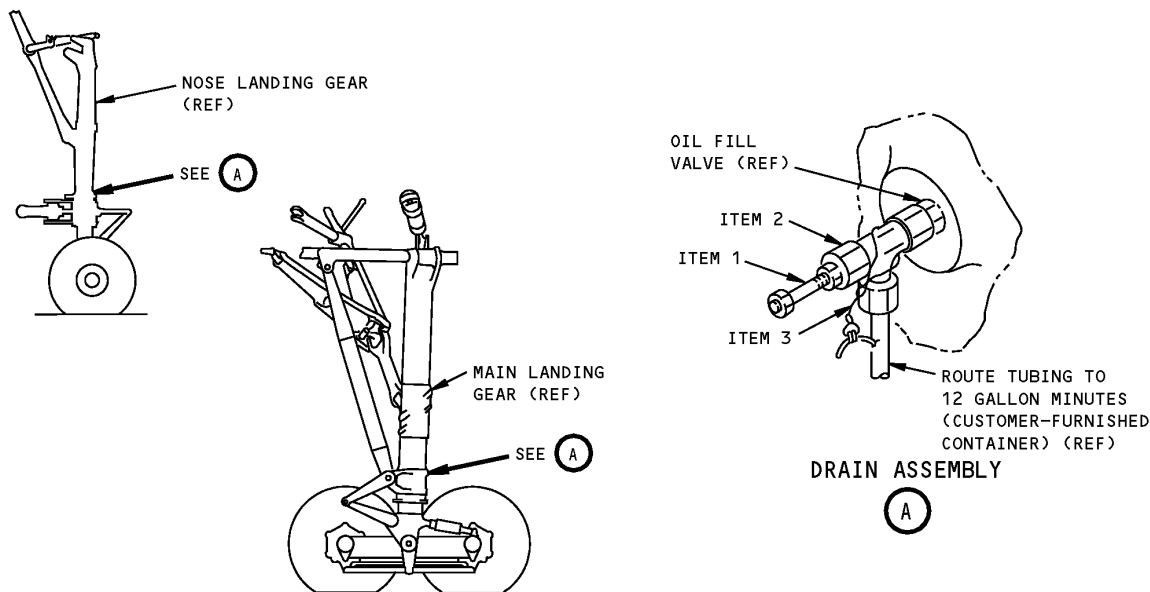
COMPONENT MAINTENANCE: NO

USAGE & DESCRIPTION: The tool inserts into the oil fill valve to drain the oil from the main or nose landing gear. This tool is used only on a completely depressurized gear. Refer to AMM 12-15-00 for further usage instructions. This tool consists of a T-shaped drain valve, an adjusting rod and tubing.

WEIGHT: 1 lb (0.45 kg)

DIMENSIONS: 4 x 3.5 x 3.5 inches (102 x 89 x 89 mm)

NOTE: J32060-1 replaces A32066-1 for future procurement.



**Main and Nose Landing Gear Shock Strut Drain Equipment
Figure 1**

REPAIRABLE/REPLACEABLE PARTS			
ITEM NO.	PART NO.	NOMENCLATURE	VENDOR CODE
1	-2	ROD	
2	-3	CAP	V09523



757

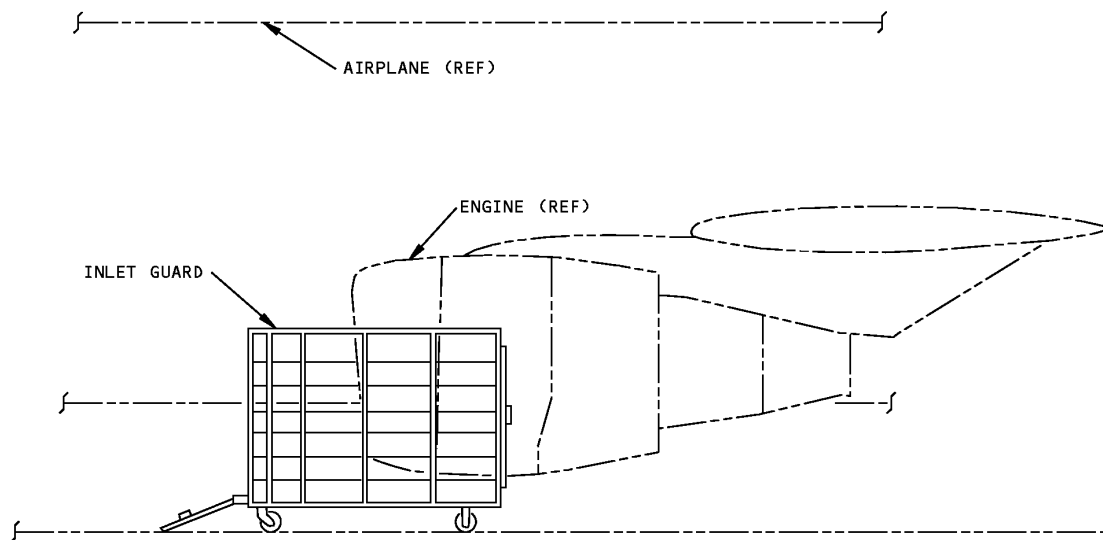
ILLUSTRATED TOOL AND EQUIPMENT MANUAL

REPAIRABLE/REPLACEABLE PARTS			
ITEM NO.	PART NO.	NOMENCLATURE	VENDOR CODE
3	CL-41-KA-8.0	LANYARD	V99862

ILLUSTRATED TOOL AND EQUIPMENT MANUAL

PART NUMBER: A71042-1, -2, -29**NAME:** GUARD - INLET, ENGINE RUN-UP**AIRPLANE MAINTENANCE:** YES**COMPONENT MAINTENANCE:** NO

USAGE & DESCRIPTION: This tool is used to protect maintenance personnel during engine run-up. Refer to AMM 71-00-00 for further usage instructions. The guard assembly consists of a semicircular fence mounted on casters. A towing bar with lunette eye is attached to the assembly. A71042-1, -29 is used on airplanes equipped with the Pratt and Whitney engine and A71042-2 is used on airplanes with the RB211-535 engine.

WEIGHT: 450 lbs (204 kg)**DIMENSIONS:** 70 x 100 x 130 inches (1778 x 2540 x 3302 mm)**NOTE:** A71042-29 replaces A71042-1 for future procurement.

**Engine Run-up Inlet Guard
Figure 1**



757

ILLUSTRATED TOOL AND EQUIPMENT MANUAL

PART NUMBER: B28002-1

NAME: HOSE ADAPTER - SUMP FUEL DRAIN

AIRPLANE MAINTENANCE: YES

COMPONENT MAINTENANCE: NO

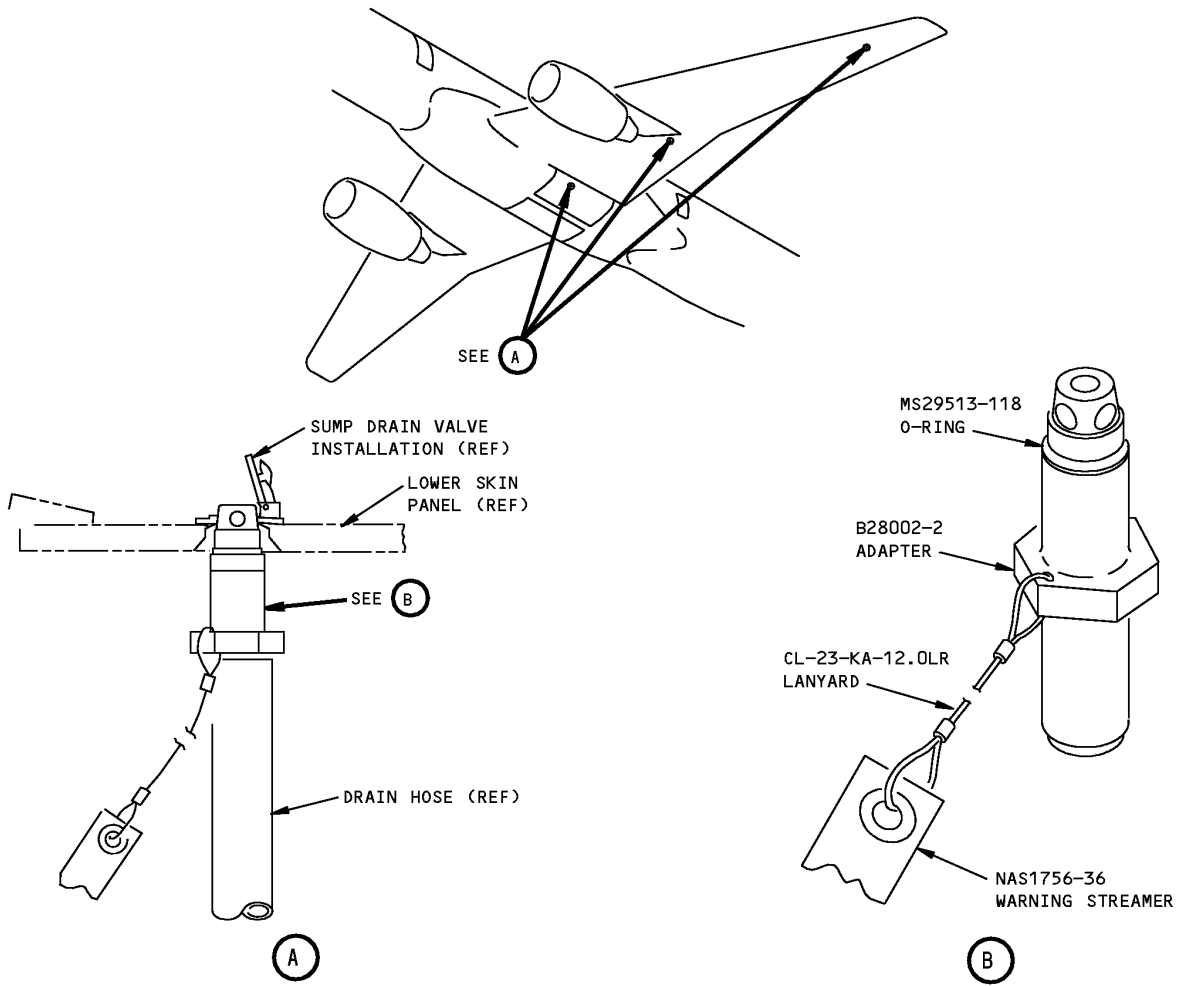
USAGE & DESCRIPTION: The B28002-1 hose adapter is used on all 757 airplanes. B28002 is used for draining fuel through the wing main fuel tank sump drain valve. The wing tank sump drain poppet assembly should be removed prior to B28002 installation. Refer to AMM 12-11-03 for complete usage instructions. B28002-1 consists of:

B28002-1		
QUANTITY	NOMENCLATURE	PART NUMBER
1	ADAPTER	B28002-2
1	O-RING	MS29513-118
1	WARNING STREAMER	NAS1756-36
1	LANYARD	CL-23-KA-12.0LR

WEIGHT: 2 lbs (0.9 kg)

DIMENSIONS: 3 x 3 x 8 inches (76 x 76 x 203 mm)

ILLUSTRATED TOOL AND EQUIPMENT MANUAL



**Sump Fuel Drain Hose Adapter
Figure 1**



757

ILLUSTRATED TOOL AND EQUIPMENT MANUAL

PART NUMBER: C12002-7

NAME: DRAIN HOSE - SURGE TANK SUMP

AIRPLANE MAINTENANCE: YES

COMPONENT MAINTENANCE: NO

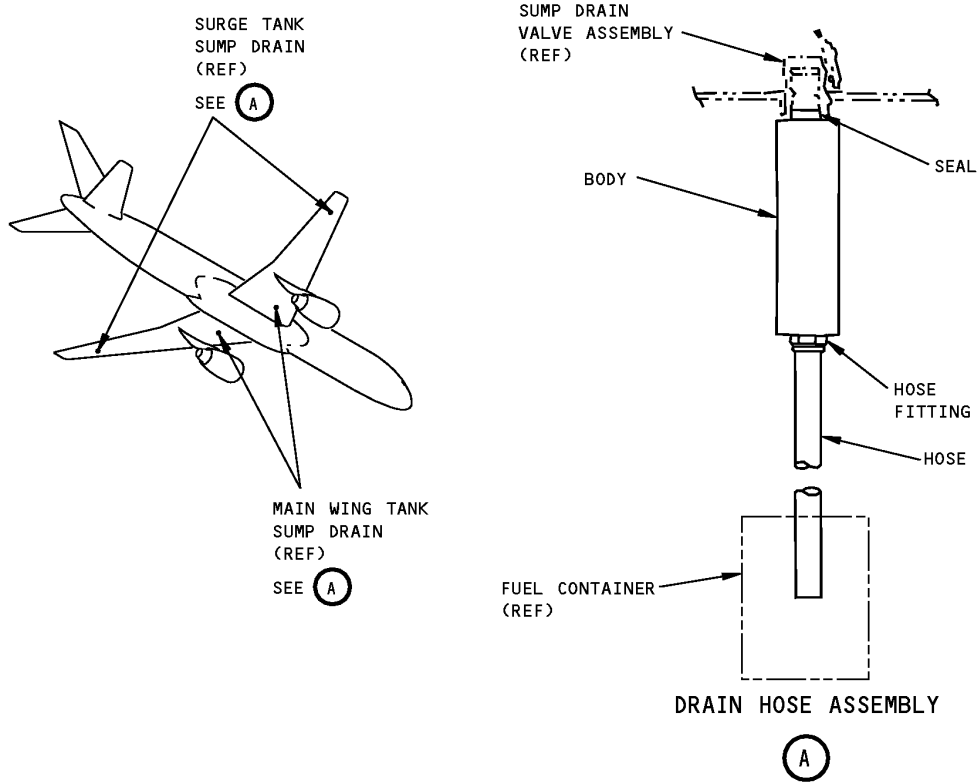
USAGE & DESCRIPTION: This drain hose is used to drain small quantities of fuel from 757 surge tanks and main wing tank. The drain hose -7 consists of -8 drain hose assembly and -4 box assembly. The -8 consists of hose, a hose fitting, a body and a seal. The hose approximately 10 feet (120 inches) in length and 0.25 inch in diameter.

WEIGHT: 5 lbs (2.3 kg)

DIMENSIONS: 12 x 12 x 12 inches (305 x 305 x 305 mm)

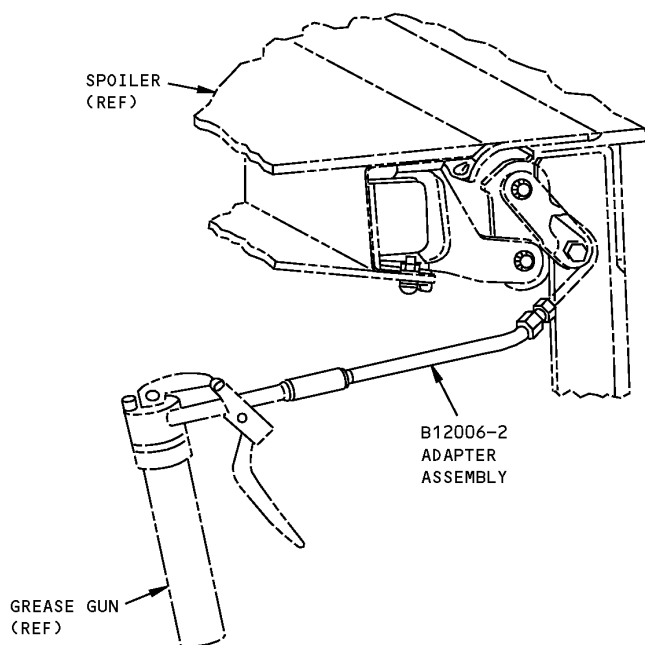
NOTE: C12002-7 supersedes C12002-1.

ILLUSTRATED TOOL AND EQUIPMENT MANUAL



**Surge Tank Sump Drain Hose
Figure 1**

ILLUSTRATED TOOL AND EQUIPMENT MANUAL

PART NUMBER: B12006-1**NAME:** ADAPTER - LUBRICATION, SPOILER OUTER HINGE LINK ASSEMBLY**AIRPLANE MAINTENANCE:** YES**COMPONENT MAINTENANCE:** NO**USAGE & DESCRIPTION:** The B12006-1 adapter is used on all 757 airplanes. B12006 attaches to a standard grease gun for lubricating bearings on spoiler outer hinge link assembly. Refer to AMM 12-21-10 for complete usage instructions. B12006-1 consists of a B12006-2 adapter assembly contained in a storage box.**WEIGHT:** 1 lb (0.45 kg)**DIMENSIONS:** 1 x 3 x 9 inches (25 x 76 x 229 mm)

Spoiler Outer Hinge Link Assembly Lubrication Adapter
Figure 1