

**CHAPTER**

**24**

**ELECTRICAL POWER**



757

ILLUSTRATED TOOL AND EQUIPMENT MANUAL

CHAPTER 24  
ELECTRICAL POWER

Subject/Page	Date	Subject/Page	Date	Subject/Page	Date
EFFECTIVE PAGES					
1	Sep 20/2008				
2	BLANK				
24-CONTENTS					
R 1	Sep 20/2008				
2	BLANK				
24-00-01					
1	Sep 20/2006				
2	Sep 20/2006				
3	Sep 20/2006				
4	Sep 20/2006				
5	Sep 20/2006				
6	BLANK				
24-00-02					
1	Sep 20/2006				
2	Sep 20/2006				
24-10-01					
1	Sep 20/2006				
2	Sep 20/2006				
24-20-01					
1	Sep 20/2006				
2	Sep 20/2006				
24-20-02					
1	Sep 20/2006				
2	Sep 20/2006				
3	Sep 20/2006				
4	Sep 20/2006				
24-20-03					
R 1	Sep 20/2008				
R 2	Sep 20/2008				
24-30-01					
1	Sep 20/2006				
2	Sep 20/2006				
24-40-01					
1	Sep 20/2006				
2	Sep 20/2006				

A = Added, R = Revised, O = Overflow, D = Deleted

# 24-EFFECTIVE PAGES



757

## ILLUSTRATED TOOL AND EQUIPMENT MANUAL

### TABLE OF CONTENTS

<u>Subject</u>	<u>Title</u>	<u>Part No.</u>
<b>24-</b>	<b>ELECTRICAL POWER</b>	
24-00-01	HOIST EQUIPMENT - MAIN BATTERY	B24001-119, -120, -91, -93
24-00-02	TEST BOX - TIME DELAY RELAY 10 SECOND DROPOUT	B24002-1
24-10-01	INSPECTION PLATE - QUICK ATTACH DETACH (QAD)	900-24999
24-20-01	TEST RELAY - ISOLATION REQUEST, POWER DISTRIBUTION SYSTEM	A24004-2
24-20-02	TEST BOX - HYDRAULIC MOTOR GENERATOR, GENERATOR CONTROL UNIT	A24008-19, -27, -37
I 24-20-03	LIFTING EYE - APU GENERATORS AND STARTERS	A49002-1, -2
24-30-01	LOAD BANK - DC GENERATION SYSTEM	A24005-1
24-40-01	WEAR GAGE SET - PLUG AND RECEPTACLE, GROUND POWER	F70284-1

# 24-CONTENTS

Page 1  
Sep 20/2008

D634N501



757

## ILLUSTRATED TOOL AND EQUIPMENT MANUAL

**PART NUMBER: B24001-91, -93, -119, -120**

**NAME:** HOIST EQUIPMENT - MAIN BATTERY

**AIRPLANE MAINTENANCE:** YES

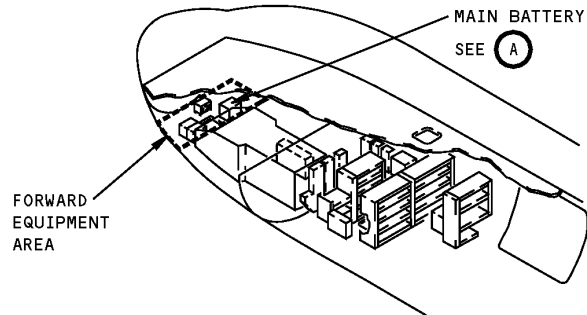
**COMPONENT MAINTENANCE:** NO

**USAGE & DESCRIPTION:** B24001-91, -93, -119 or -120 hoist equipment is used on all 757 airplanes. B24001 hoist equipment is used to install or remove the 96 pound main battery, located in the forward electrical compartment. Refer to AMM 24-31-01 for complete usage instructions. All B24001 hoist equipment is designed to fold into a compact storage unit. B24001-91 and -93 have been replaced for future procurement by the B24001-119 and -120 hoist equipment respectively. B24001-119 and -120 supersede B24001-109 and -110 respectively. Both B24001-109 and -110 may be reworked into B24001-119 and -120. B24001-93 contains the B24001-91 hoist equipment and B24001-120 contains the B24001-119 hoist equipment. Both B2400-93 and B24001-120 contain a B24001-94 stowage adapter assembly, allowing B24001-93 or -120 to be used as "fly-away" equipment. B24001-94 mounts to the airplane structure per airplane drawing 284N1652, Support Installation - Main Battery Stowage Tool.

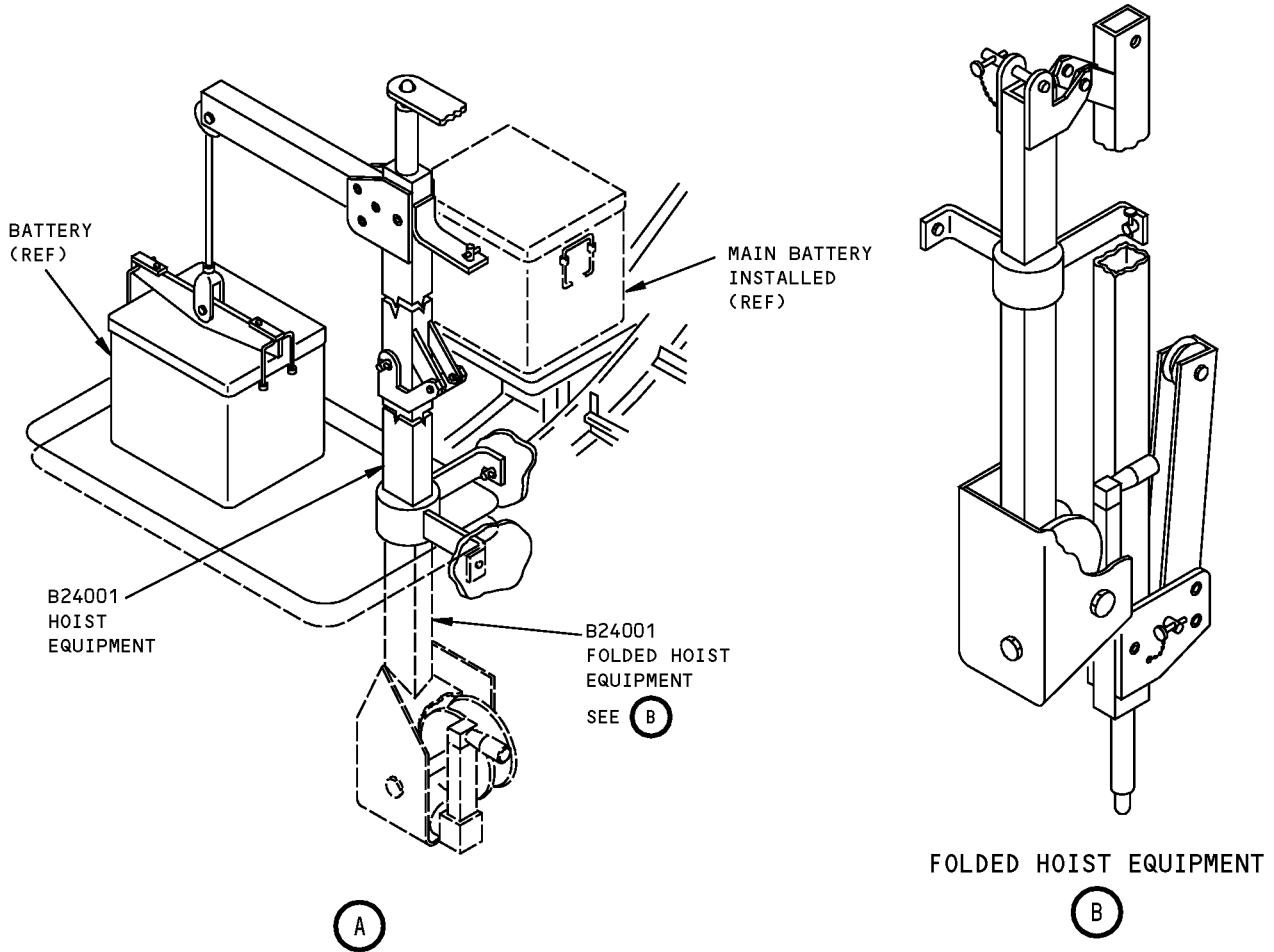
**WEIGHT:** 14 lbs (6.3 kg)

**DIMENSIONS:** 10 x 10 x 30 inches (254 x 254 x 762 mm)

**NOTE:** B24001-120 replaces B24001-93 for future procurement.  
B24001-119 replaces B24001-91 for future procurement.  
B24001-120 supersedes B24001-110.  
B24001-119 supersedes B24001-109.  
B24001-93 supersedes B24001-51.  
B24001-91 supersedes B24001-1.

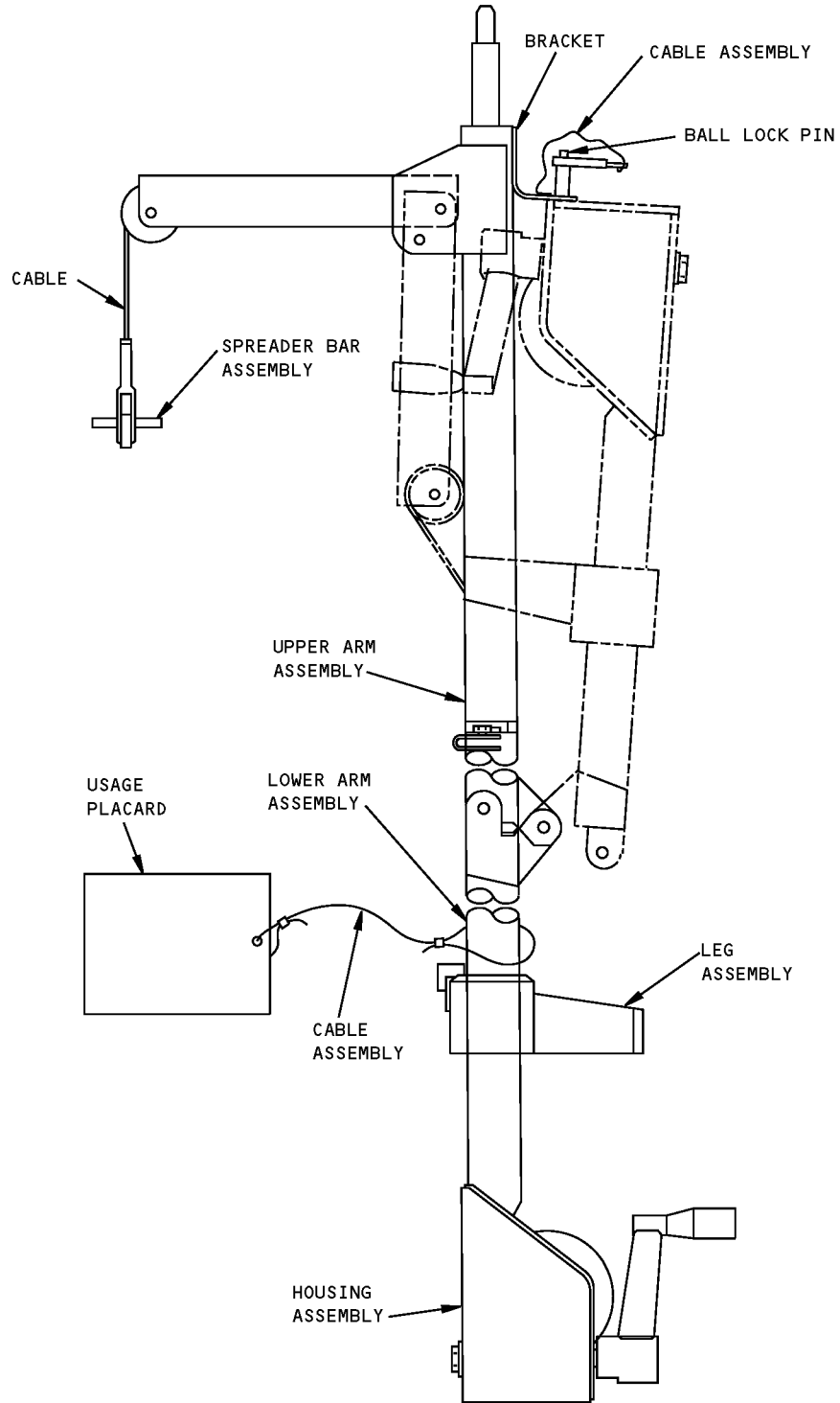


**Forward Electrical Equipment Compartment  
Figure 1**



**Main Battery Hoist Equipment  
Figure 2 (Sheet 1 of 2)**

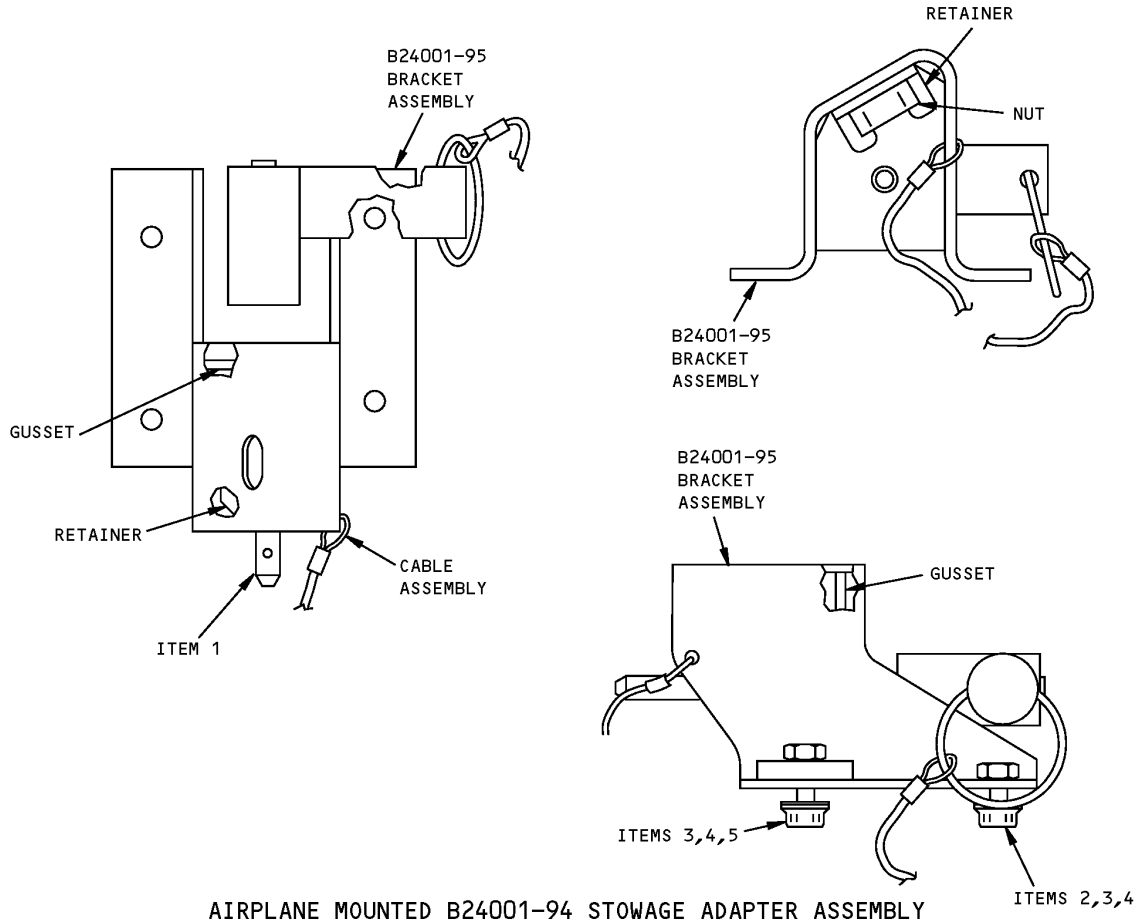
**ILLUSTRATED TOOL AND EQUIPMENT MANUAL**



B24001 HOIST EQUIPMENT, WORKING AND FOLDED POSITIONS

**Main Battery Hoist Equipment  
Figure 2 (Sheet 2 of 2)**

**757**  
**ILLUSTRATED TOOL AND EQUIPMENT MANUAL**



AIRPLANE MOUNTED B24001-94 STOWAGE ADAPTER ASSEMBLY

**Airplane Mounted Stowage Adapter Assembly**  
**Figure 3**

REPAIRABLE/REPLACEABLE PARTS			
ITEM NO.	PART NO.	NOMENCLATURE	VENDOR CODE
1	NAS1334C5C2.6D	BALL LOCK PIN	
2	NAS6603-3	BOLT	
3	NAS1804-3	NUT	
4	AN960-D10	FLAT WASHER	
5	NAS6603-6	BOLT	



**ILLUSTRATED TOOL AND EQUIPMENT MANUAL**

**PART NUMBER: B24002-1**

**NAME:** TEST BOX - TIME DELAY RELAY 10 SECOND DROPOUT

**AIRPLANE MAINTENANCE:** NO

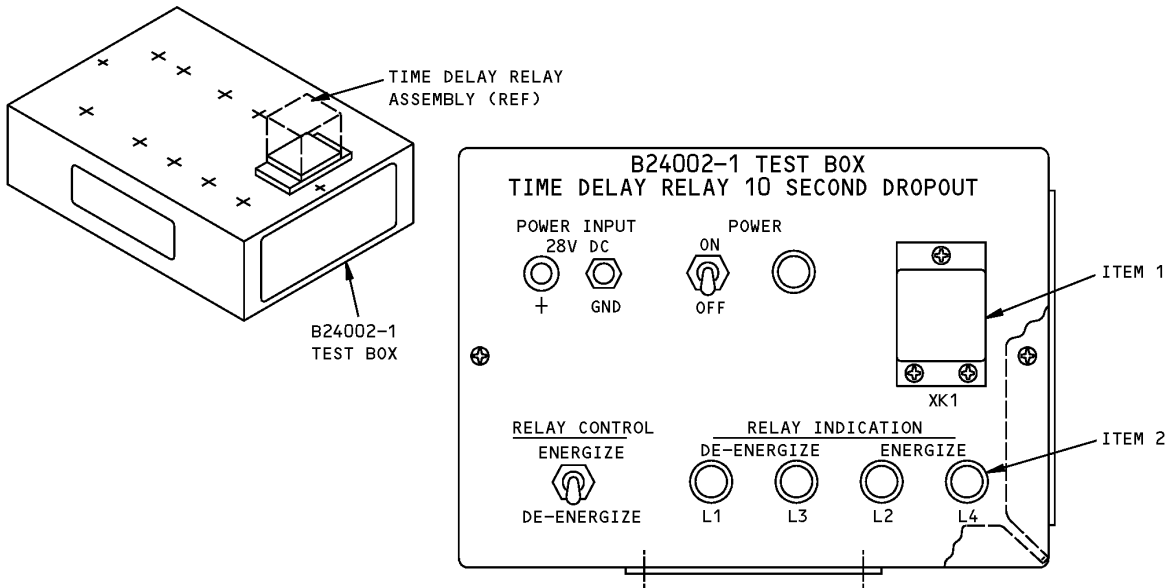
**COMPONENT MAINTENANCE:** YES

**USAGE & DESCRIPTION:** The B24002 drawing has been transferred to BAE Systems and will no longer be revised by Boeing. The B24002 inclusion in the 757 ITEM is for information and historical purposes only.

The B24002-1 test box is used during component maintenance on all 757 airplanes. B24002 is used with a 0-35 VDC power supply. Refer to CMM 24-09-87 for complete usage instructions. B24002-1 consists of switches, banana jacks, lamps and electrical circuitry mounted on a panel and chassis assembly.

**WEIGHT:** 2 lb (0.9 kg)

**DIMENSIONS:** 2 x 5 x 7 inches (51 x 127 x 178 mm)



**Time Delay Relay 10 Second Dropout Test Box  
Figure 1**



757

ILLUSTRATED TOOL AND EQUIPMENT MANUAL

REPAIRABLE/REPLACEABLE PARTS			
ITEM NO.	PART NO.	NOMENCLATURE	VENDOR CODE
1	102-009-1	RELAY SOCKET	
2	507-4761-3331-50	LAMP	



757

**ILLUSTRATED TOOL AND EQUIPMENT MANUAL**

**PART NUMBER: 900-24999**

**NAME:** INSPECTION PLATE - QUICK ATTACH DETACH (QAD)

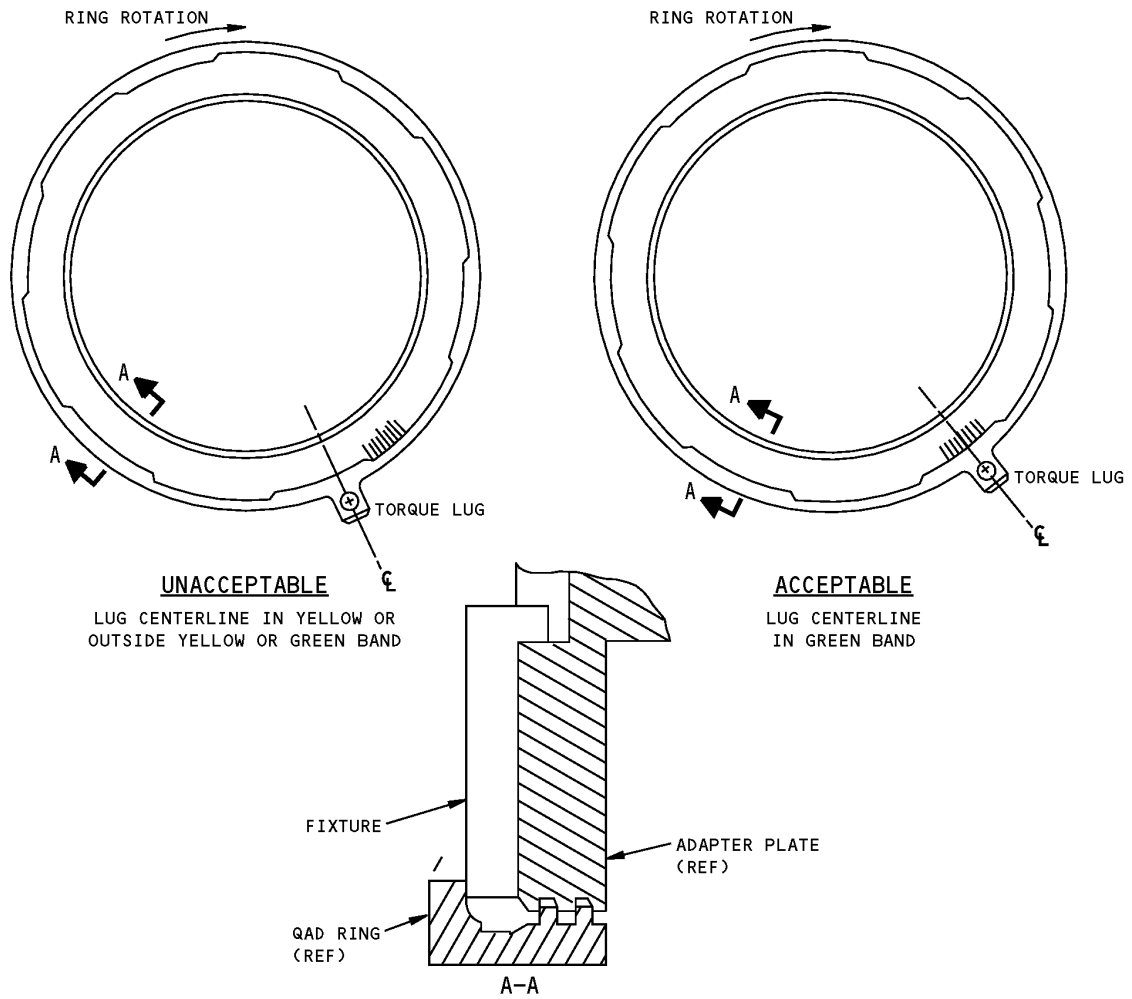
**AIRPLANE MAINTENANCE:** YES

**COMPONENT MAINTENANCE:** NO

**USAGE & DESCRIPTION:** This tool simulates the Integrated Drive Generator (IDG) input flange and is used to check the Quick Attach Detach (QAD) adapter torque input.

**NOTE:** This tool is a supplier proprietary item and can only be obtained from Sundstrand Aviation Operation, 4747 Harrison Ave, P.O. Box 7002, Rockford, Illinois 61125.

**757**  
**ILLUSTRATED TOOL AND EQUIPMENT MANUAL**



**QAD Inspection Plate**  
**Figure 1**



757

## ILLUSTRATED TOOL AND EQUIPMENT MANUAL

**PART NUMBER: A24004-2**

**NAME:** TEST RELAY - ISOLATION REQUEST, POWER DISTRIBUTION SYSTEM

**AIRPLANE MAINTENANCE:** NO

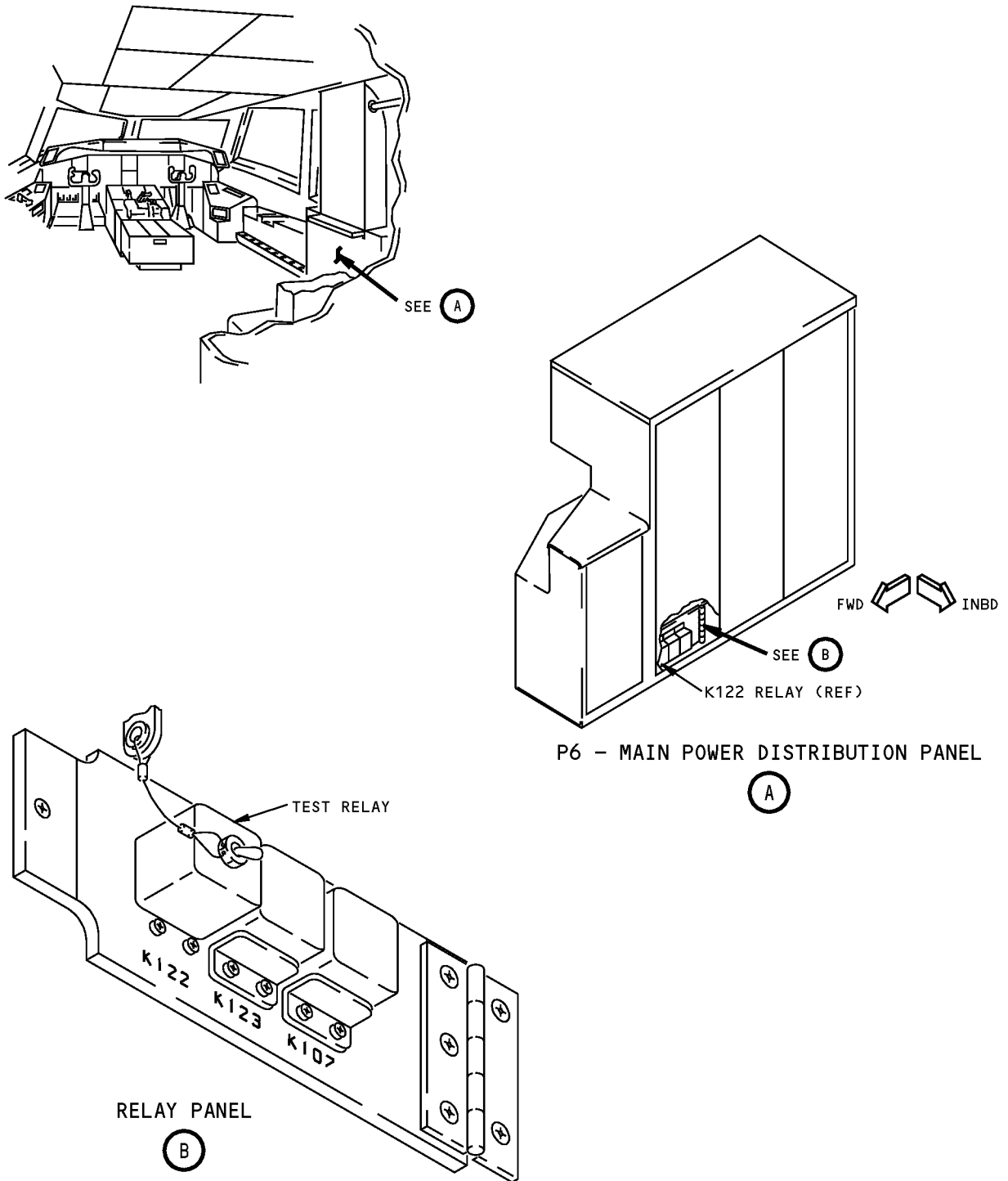
**COMPONENT MAINTENANCE:** YES

**USAGE & DESCRIPTION:** The A24004-2 is used to test AC power system switching in the autoland mode. Refer to CMM 24-22-00 for complete usage instructions. The tool consists of a plug-in test relay assembly and a box.

**WEIGHT:** 1 lb (0.45 kg)

**DIMENSIONS:** 3 x 5 x 6 inches (76 x 127 x 152 mm)

**757  
ILLUSTRATED TOOL AND EQUIPMENT MANUAL**



**Power Distribution System Isolation Request Test Relay  
Figure 1**



757

## ILLUSTRATED TOOL AND EQUIPMENT MANUAL

**PART NUMBER: A24008-19, -27, -37**

**NAME:** TEST BOX - HYDRAULIC MOTOR GENERATOR, GENERATOR CONTROL UNIT

**AIRPLANE MAINTENANCE:** YES

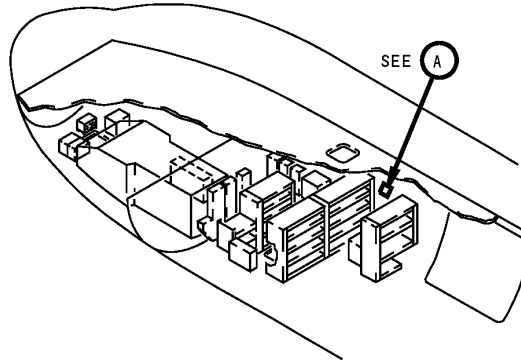
**COMPONENT MAINTENANCE:** NO

**USAGE & DESCRIPTION:** The A24008-19, -27 or -37 test boxes are used on 757 airplanes that are equipped with ABEX (part numbers 21428 or 214280-01) generator control units (GCU) used for controlling the ABEX 5KVA hydraulic motor driven generators (HMG). The B24008 is used to simulate hydraulic motor driven generator control unit operation. Refer to AMM 24-25-00 for complete usage instructions. The A24008-19 consists of an A24008-20 test box assembly contained in a storage box. The A24008-27 consists of an A24008-28 test box assembly contained in a storage box. The A24008-37 consists of an A24008-38 test box assembly contained in a storage box.

**WEIGHT:** A24008-37 - 12 lbs  
A24008-19, -27 - 5 lbs

**DIMENSIONS:** A24008-37 - 4 x 10 x 17 inches  
A24008-19, -27 - 3 x 5 x 7 inches

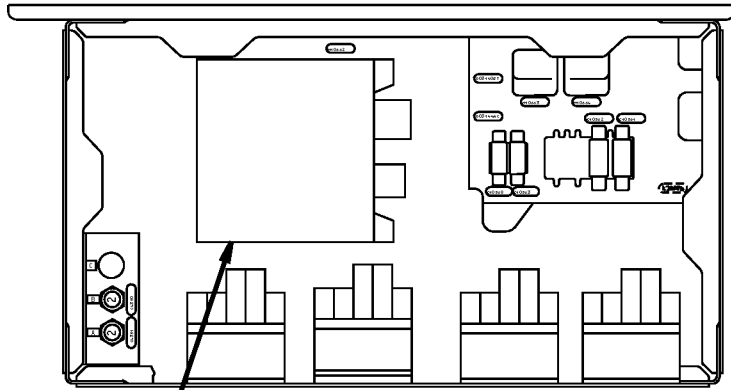
**NOTE:** A24008-37 replaces A24008-19, -27 for future procurement.  
A24008-19 supersedes A24008-1.



**P71 Hydraulic Generator Power Control Panel - Locator  
Figure 1**

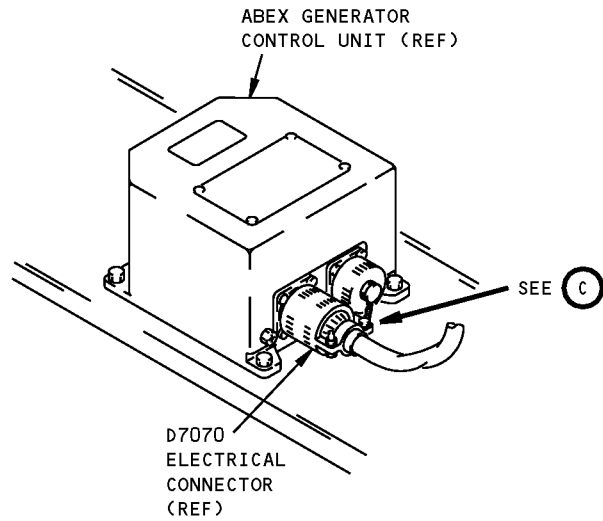


**757  
ILLUSTRATED TOOL AND EQUIPMENT MANUAL**



SEE **(B)**  
HYDRAULIC GENERATOR POWER CONTROL PANEL, P71

**(A)**



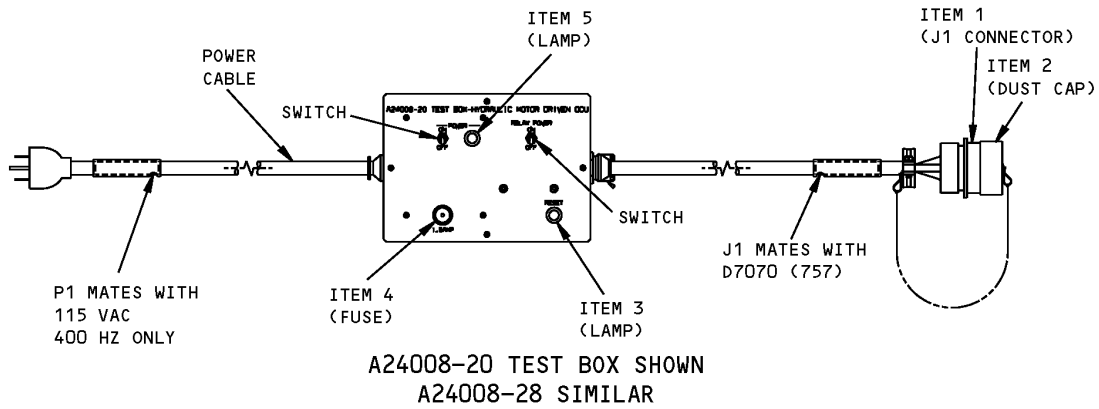
ABEX GENERATOR  
CONTROL UNIT (REF)  
  
D7070  
ELECTRICAL  
CONNECTOR  
(REF)

HYDRAULIC MOTOR DRIVEN  
GENERATOR CONTROL UNIT

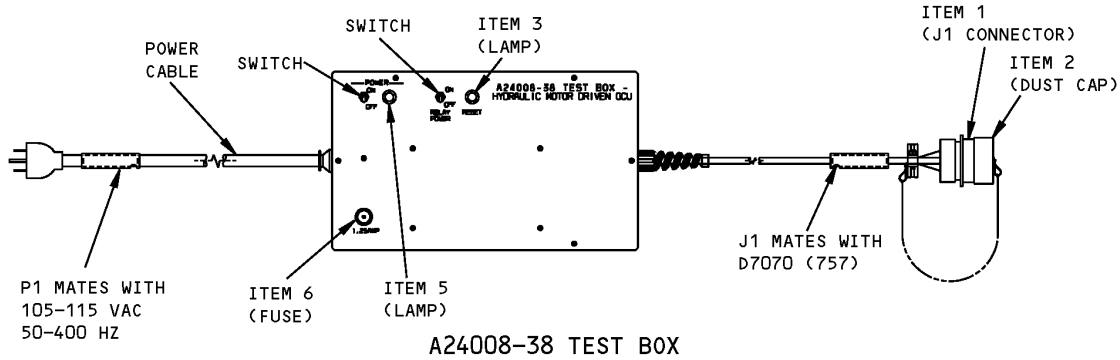
**(B)**

**Hydraulic Motor Generator GCU Test Box  
Figure 2 (Sheet 1 of 2)**

**757**  
**ILLUSTRATED TOOL AND EQUIPMENT MANUAL**



C



C

**Hydraulic Motor Generator GCU Test Box  
Figure 2 (Sheet 2 of 2)**

<b>REPAIRABLE/REPLACEABLE PARTS</b>			
<b>ITEM NO.</b>	<b>PART NO.</b>	<b>NOMENCLATURE</b>	<b>VENDOR CODE</b>
1	M83723/83R1624	CONNECTOR	
2	M83723/60-116AC	CAP, DUST	
3	507-4761-3331-500	LAMP, 28V DC	V83330
4	31201-5	FUSE	V75915
5	507-5337-0931-670	LAMP	V83330
6	3121.25	FUSE	V83330



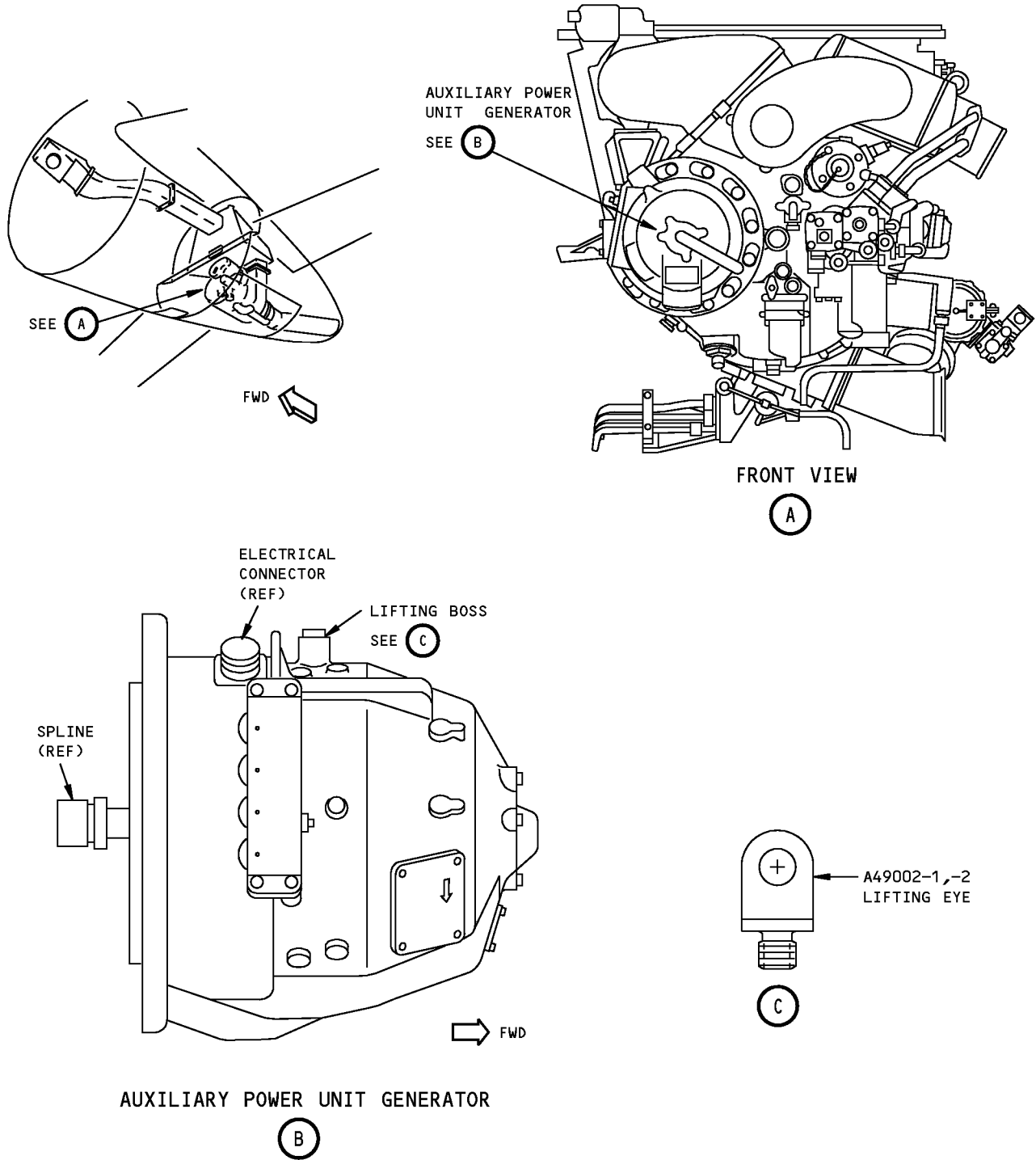
757

## ILLUSTRATED TOOL AND EQUIPMENT MANUAL

PART NUMBER: A49002-1, -2

- I NAME:** LIFTING EYE - APU GENERATORS AND STARTERS
- AIRPLANE MAINTENANCE:** YES
- COMPONENT MAINTENANCE:** NO
- I USAGE & DESCRIPTION:** A49002-1 or -2 lifting eye are used on all 757 airplanes. The A49002 provides a lift point for removal/installation of the APU generator or starter. The A49002-1 configuration is used for APU's with helicoil inserts. The A49002-2 configuration is used for stainless steel armored inserts. Refer to AMM 24-21-01 for complete usage instructions. A49002-1 consists of a single A49002-1 lifting eye. A49002-2 consists of a single A49002-2 lifting eye.
- I WEIGHT:** 0.1 lb (0.05 kg)
- DIMENSIONS:** 0.75-inch diameter x 1.35 inch (19 mm diameter x 34 mm)

**ILLUSTRATED TOOL AND EQUIPMENT MANUAL**



1597535 S0000299167\_V1

**APU Generator Lifting Eye  
Figure 1**



757

## ILLUSTRATED TOOL AND EQUIPMENT MANUAL

PART NUMBER: A24005-1

**NAME:** LOAD BANK - DC GENERATION SYSTEM

**AIRPLANE MAINTENANCE:** YES

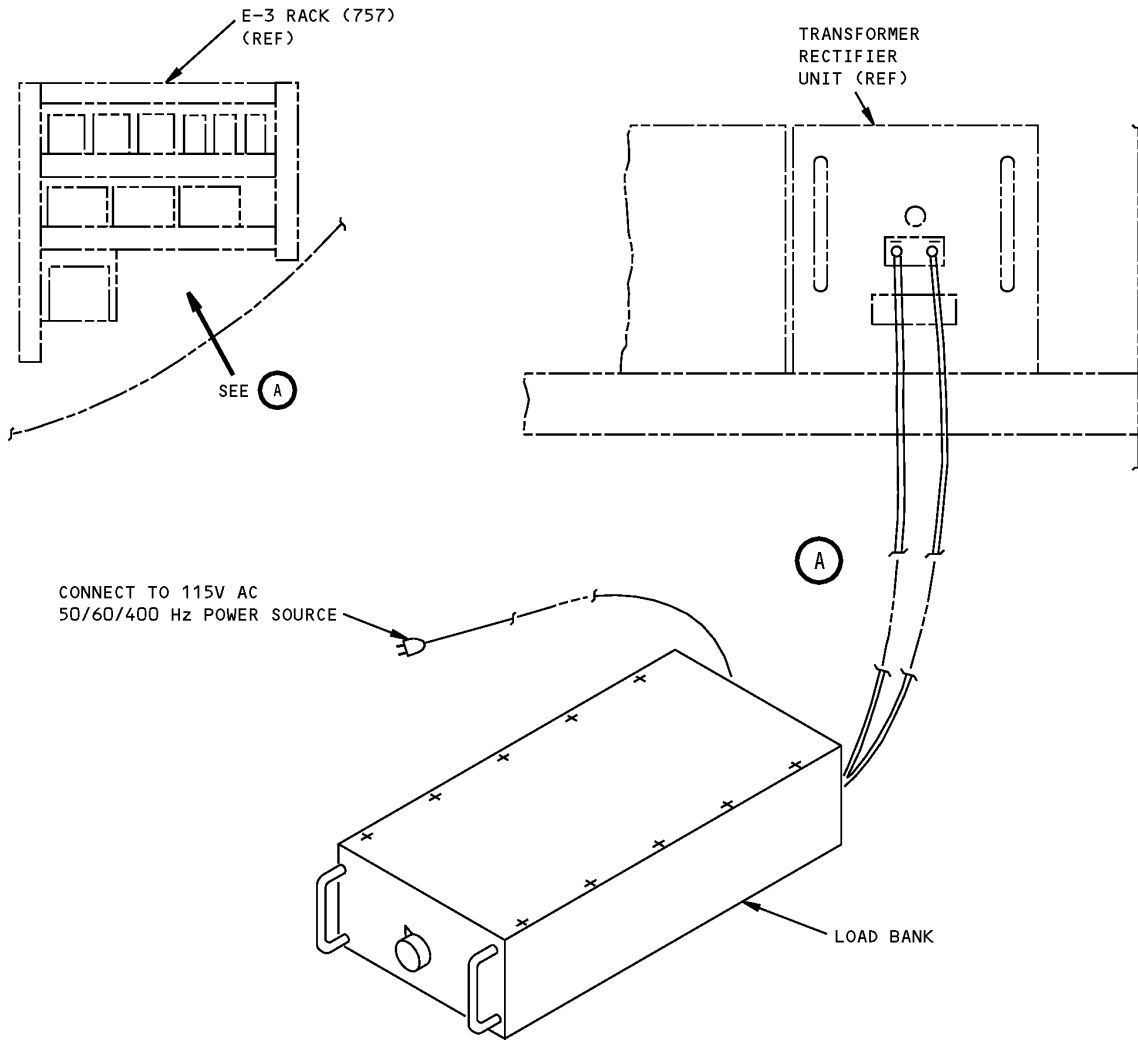
**COMPONENT MAINTENANCE:** NO

**USAGE & DESCRIPTION:** This tool is used to load the Transformer Rectifier Unit (TRU) during test of the DC generation system. Refer to AMM 24-30-00 for further usage instructions. This tool consists of a -2 load bank box assembly and a -3 storage box assembly.

**WEIGHT:** 15 lbs (7 kg)

**DIMENSIONS:** 8 x 14 x 27 inches (203 x 356 x 686 mm)

**ILLUSTRATED TOOL AND EQUIPMENT MANUAL**



**DC Generation System Load Bank  
Figure 1**



757

**ILLUSTRATED TOOL AND EQUIPMENT MANUAL**

**PART NUMBER: F70284-1**

**NAME:** WEAR GAGE SET - PLUG AND RECEPTACLE, GROUND POWER

**AIRPLANE MAINTENANCE:** YES

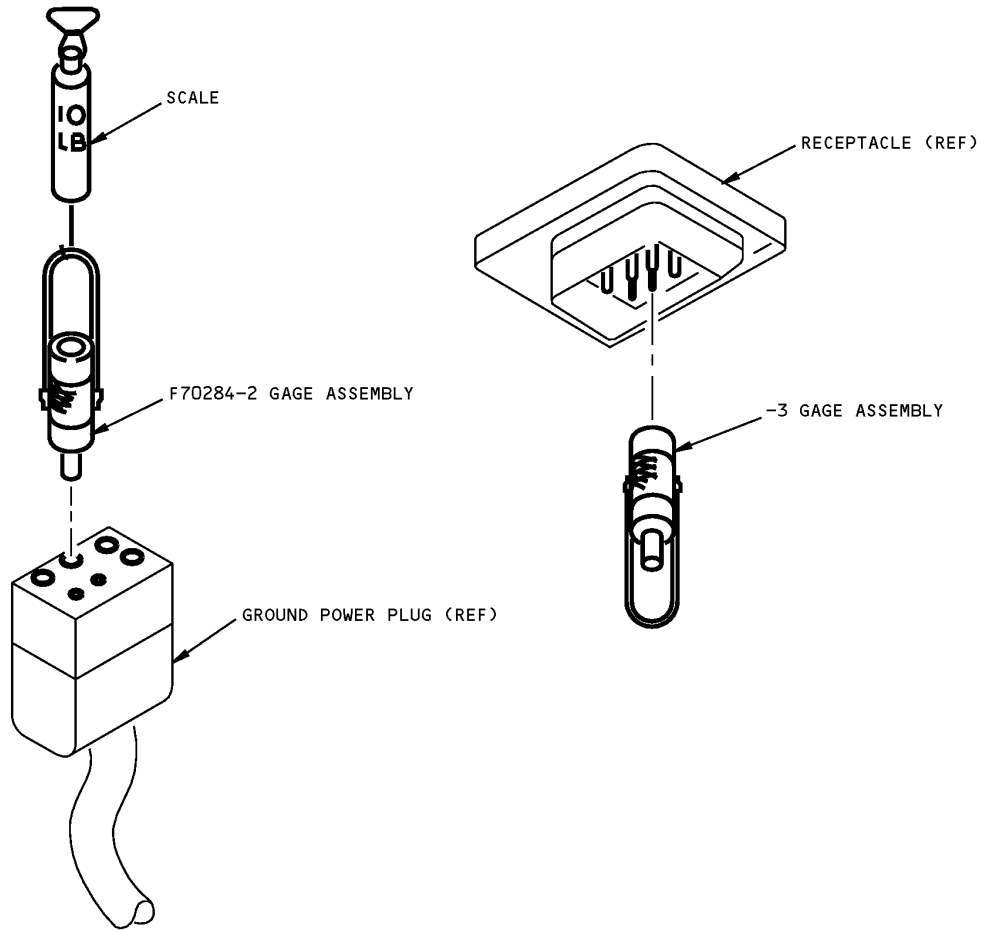
**COMPONENT MAINTENANCE:** NO

**USAGE & DESCRIPTION:** This gage set is used to check for excessive wear on the pins and sockets of the ground power plug and receptacle. The tool is basically a go/no-go test which measures disengaging force of 10 lbs for each large pin and 5 lbs for each small pin. Refer to AMM 24-41-02 for complete usage instructions. The tool consists of two gage assemblies, a scale, a cable assembly bale and a storage box.

**DIMENSIONS:** 4 x 7 x 13 inches (102 x 178 x 330 mm)

**NOTE:** F70284-1 supercedes SE24-4001

**757**  
**ILLUSTRATED TOOL AND EQUIPMENT MANUAL**



**Ground Power Plug and Receptacle Wear Gage Set**  
**Figure 1**