

CHAPTER

26

FIRE PROTECTION



757

ILLUSTRATED TOOL AND EQUIPMENT MANUAL

CHAPTER 26
FIRE PROTECTION

Subject/Page	Date	Subject/Page	Date	Subject/Page	Date
EFFECTIVE PAGES		26-20-05			
1	Sep 20/2008	1	Sep 20/2006		
2	BLANK	2	Sep 20/2006		
26-CONTENTS					
1	Sep 20/2006				
2	BLANK				
26-10-01					
1	Sep 20/2006				
2	Sep 20/2006				
3	Sep 20/2006				
4	Sep 20/2006				
5	Sep 20/2006				
6	BLANK				
26-10-02					
1	Sep 20/2006				
2	Sep 20/2006				
26-10-03					
1	Sep 20/2006				
2	Sep 20/2006				
26-10-04					
1	Sep 20/2006				
2	BLANK				
26-20-01					
1	Sep 20/2006				
2	Sep 20/2006				
3	Sep 20/2006				
4	Sep 20/2006				
5	Sep 20/2006				
6	BLANK				
26-20-02					
1	Sep 20/2007				
2	Sep 20/2007				
3	Sep 20/2007				
4	Sep 20/2006				
26-20-03					
1	Sep 20/2006				
2	BLANK				
26-20-04					
1	Sep 20/2007				
2	Sep 20/2006				

A = Added, R = Revised, O = Overflow, D = Deleted

26-EFFECTIVE PAGES



757

ILLUSTRATED TOOL AND EQUIPMENT MANUAL

TABLE OF CONTENTS

<u>Subject</u>	<u>Title</u>	<u>Part No.</u>
26-	FIRE PROTECTION	
26-10-01	TEST EQUIPMENT - ENGINE AND APU FIRE DETECTION SYSTEM (GRAVINER)	B26001-1
26-10-02	EXTENDER CARD - ELECTRONIC CARD FILE	G26004-39, -40
26-10-03	ADAPTER - HOT WIRE ANEMOMETER	G26005-13, -17, -9
26-10-04	TEST BOX - AUTOMATIC FIRE/OVERHEAT LOGIC TEST SYSTEM (AFOLTS) PRINTED CIRCUIT ASSEMBLY (PCA)	B26004-1
26-20-01	ELECTRICAL TEST EQUIPMENT - BOTTLE SQUIB, FIRE EXTINGUISHER SYSTEM	A26001-165, -174, -187
26-20-02	TEST EQUIPMENT - ENGINE FIRE EXTINGUISHER	B26003-1, -2, -3
26-20-03	TEST EQUIPMENT - REGULATOR, CARGO FIRE EXTINGUISHING	A26003-10, -7
26-20-04	TEST EQUIPMENT - DISCHARGE LINE CARGO FIRE EXTINGUISHER	B26002-1
26-20-05	TEST BOX - TIME DELAY, CARGO FIRE EXTINGUISHER BOTTLE	A26002-54

26-CONTENTS



757

ILLUSTRATED TOOL AND EQUIPMENT MANUAL

PART NUMBER: B26001-1

NAME: TEST EQUIPMENT - ENGINE AND APU FIRE DETECTION SYSTEM (GRAVINER)

AIRPLANE MAINTENANCE: YES

COMPONENT MAINTENANCE: NO

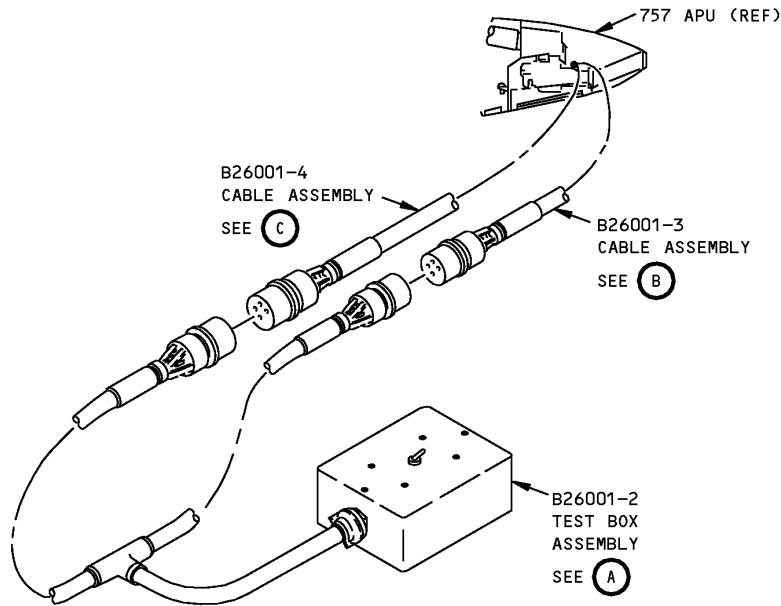
USAGE & DESCRIPTION: The B26001-1 test equipment is used on 757 airplanes equipped with a Graviner engine and APU fire detection system. The B26001 test equipment is used to simulate a fire condition to the fire detection system control cards during engine and APU fire detection system tests. Refer to AMM 26-15-00 for complete usage instructions. B26001-1 consists of:

B26001-1		
QUANTITY	NOMENCLATURE	PART NUMBER
1	TEST BOX ASSEMBLY	B26001-2
1	CABLE ASSEMBLY	B26001-3
1	CABLE ASSEMBLY	B26001-4
1	STORAGE BOX	

WEIGHT: 10 lbs (4.5 kg)

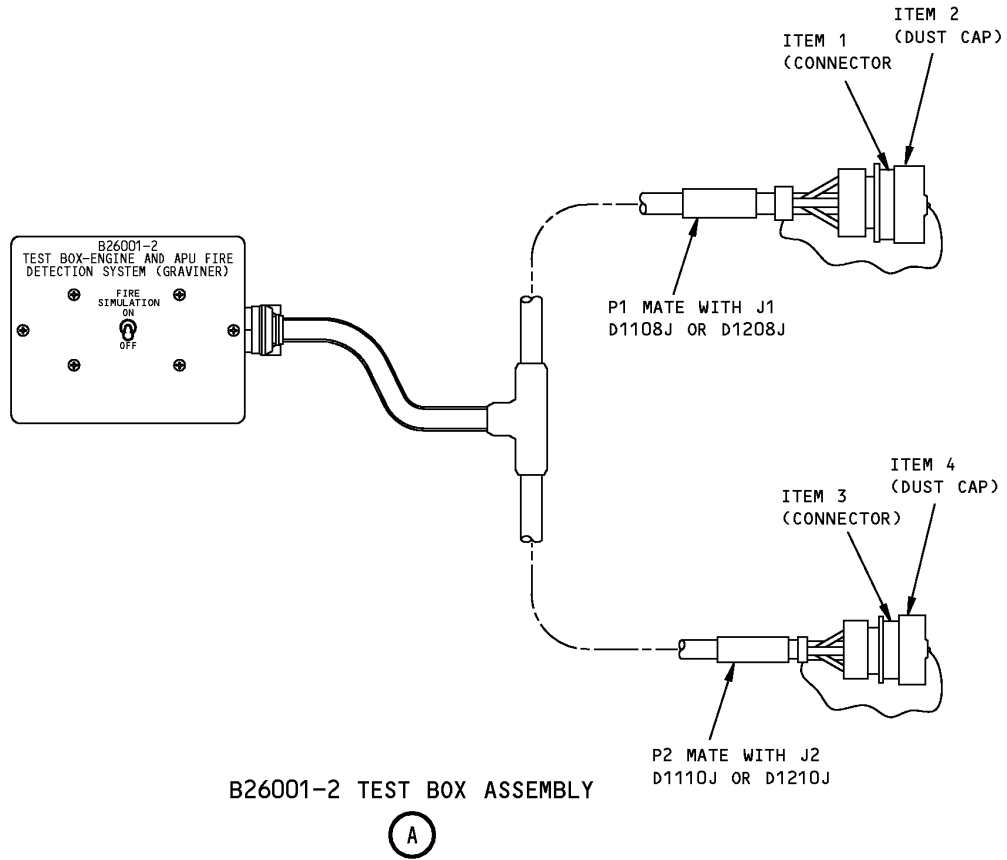
DIMENSIONS: 11 x 17 x 8 inches (279 x 432 x 203 mm)

757
ILLUSTRATED TOOL AND EQUIPMENT MANUAL



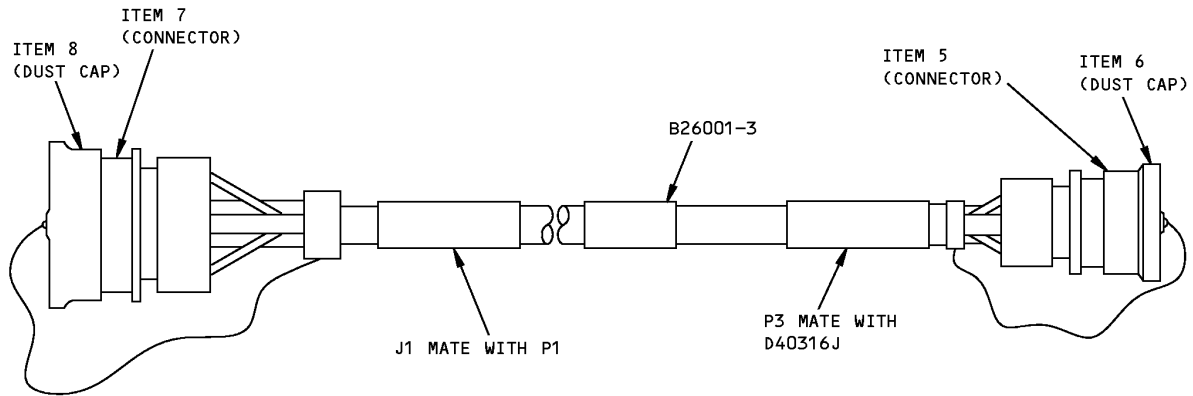
Engine and APU Fire Detection System (Graviner) Test Equipment
Figure 1 (Sheet 1 of 3)

ILLUSTRATED TOOL AND EQUIPMENT MANUAL



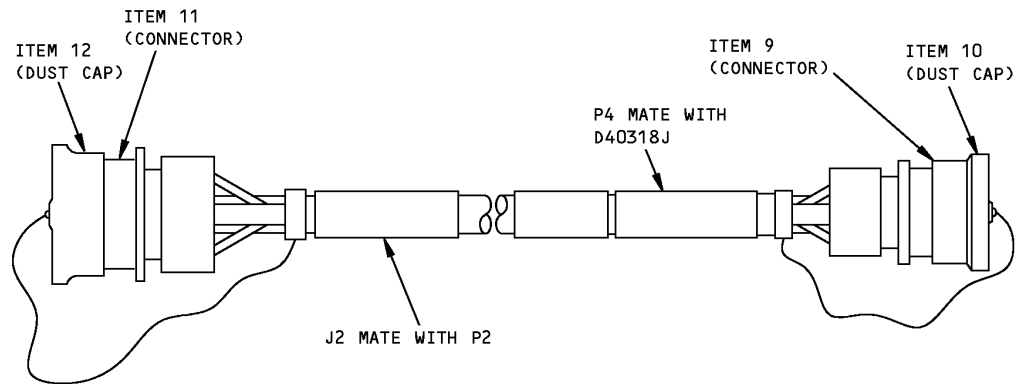
**Engine and APU Fire Detection System (Graviner) Test Equipment
Figure 1 (Sheet 2 of 3)**

757
ILLUSTRATED TOOL AND EQUIPMENT MANUAL



B26001-3 CABLE ASSEMBLY

(B)



B26001-4 CABLE ASSEMBLY

(C)

Engine and APU Fire Detection System (Graviner) Test Equipment
Figure 1 (Sheet 3 of 3)

REPAIRABLE/REPLACEABLE PARTS			
ITEM NO.	PART NO.	NOMENCLATURE	VENDOR CODE
1	M83723/87R2219N	CONNECTOR	
2	M83723/59-122AC	CAP	
3	M83723/87R1814N	CONNECTOR	
4	M83723/59-118AC	CAP	
5	M83723/87R1476	CONNECTOR	
6	M83723/59-114AC	CAP	
7	M83723/82R2219N	CONNECTOR	
8	M83723/60-122AC	CAP	



757

ILLUSTRATED TOOL AND EQUIPMENT MANUAL

REPAIRABLE/REPLACEABLE PARTS			
ITEM NO.	PART NO.	NOMENCLATURE	VENDOR CODE
9	M83723/87R147N	CONNECTOR	
10	M83723/59-114AC	CAP	
11	M83723/82R1814N	CONNECTOR	
12	M83723/60-118AC	CAP	

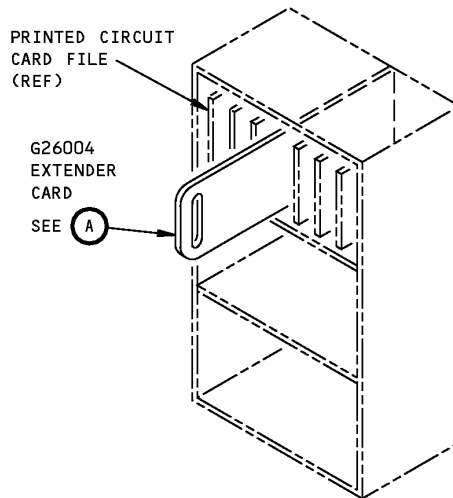
ILLUSTRATED TOOL AND EQUIPMENT MANUAL

PART NUMBER: G26004-39, -40**NAME:** EXTENDER CARD - ELECTRONIC CARD FILE**AIRPLANE MAINTENANCE:** YES**COMPONENT MAINTENANCE:** NO

USAGE & DESCRIPTION: This tool is used to monitor and troubleshoot electronic card files by providing pin access to connectors. Refer to the Fault Isolation Manual (FIM) Introduction for further usage instructions. The -39 tool consists of a -41 extender card assembly and a -43 storage box assembly. The -39 is for use with 41 pin connector. The -40 tool consists of a -42 extender card assembly and a -44 storage box assembly. The -40 is for use with 66 pin connector.

WEIGHT: 1 lb (0.45 kg)**DIMENSIONS:** 6 x 19 inches (152 x 483 mm)

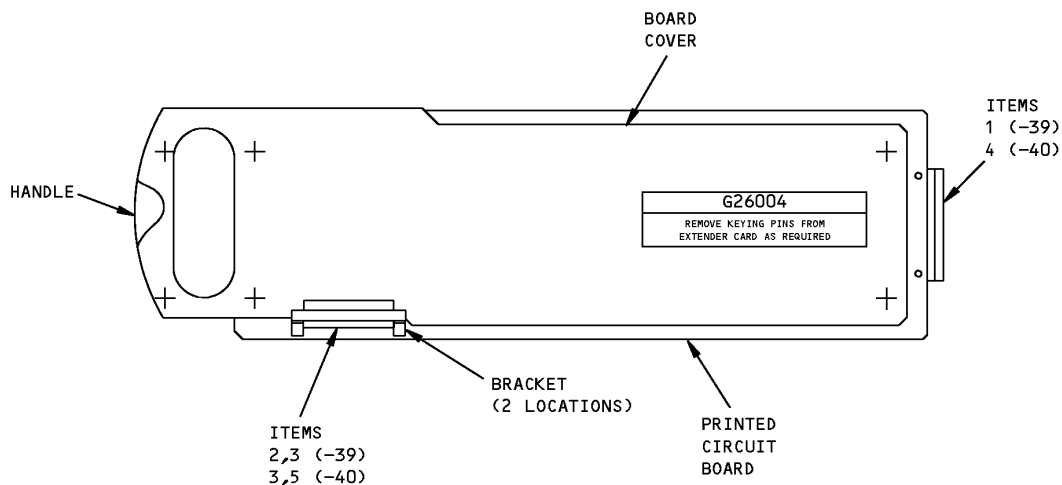
NOTE: G26004-39 supersedes G26004-1 and -10.
G26004-40 supersedes G26004-23.



G26004-39,-40

**Electronic Card File - Extender Card
Figure 1 (Sheet 1 of 2)**

ILLUSTRATED TOOL AND EQUIPMENT MANUAL



EXTENDER CARD ASSEMBLY
(TYPICAL)

(A)

Electronic Card File - Extender Card
Figure 1 (Sheet 2 of 2)

REPAIRABLE/REPLACEABLE PARTS			
ITEM NO.	PART NO.	NOMENCLATURE	VENDOR CODE
1	191-342-0001	CONNECTOR	V26742
	BACC65K41 (OPTIONAL)	CONNECTOR	
2	192-341-001	CONNECTOR	V26742
	BACC65L41 (OPTIONAL)	CONNECTOR	
3	141-150-02	TERMINAL	V26742
4	191-366-0005	CONNECTOR	V26742
	BACC65K66 (OPTIONAL)	CONNECTOR	
5	192-366-0004	CONNECTOR	V26742
	BACC65L66 (OPTIONAL)	CONNECTOR	

ILLUSTRATED TOOL AND EQUIPMENT MANUAL

PART NUMBER: G26005-9, -13, -17

NAME: ADAPTER - HOT WIRE ANEMOMETER

AIRPLANE MAINTENANCE: YES

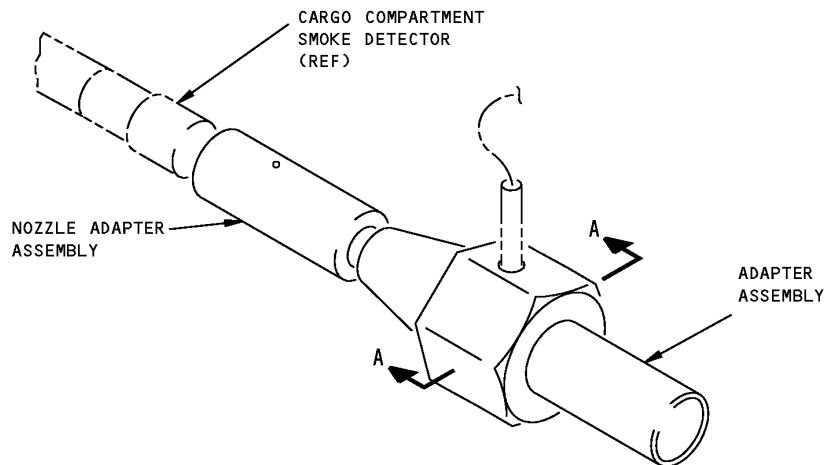
COMPONENT MAINTENANCE: NO

USAGE & DESCRIPTION: These tools are used to adapt the cargo compartment smoke detector orifices to the hot wire probe of TSI models 1650 and 8355 anemometer to measure the air samples. The -9 tool is used with the TSI 1650 anemometer. The -13 and -17 tool is used with the TSI 8350, 8352, 8355, and 8357 anemometers which replace the TSI 1650 model anemometer for future procurement. Refer to Airplane Maintenance Manual 26-16-00.

WEIGHT: 0.5 lb (0.2 kg)

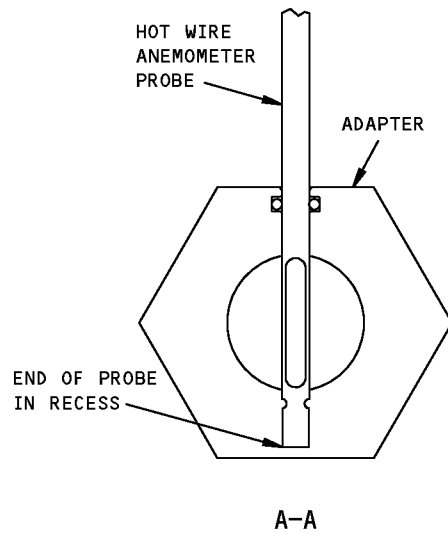
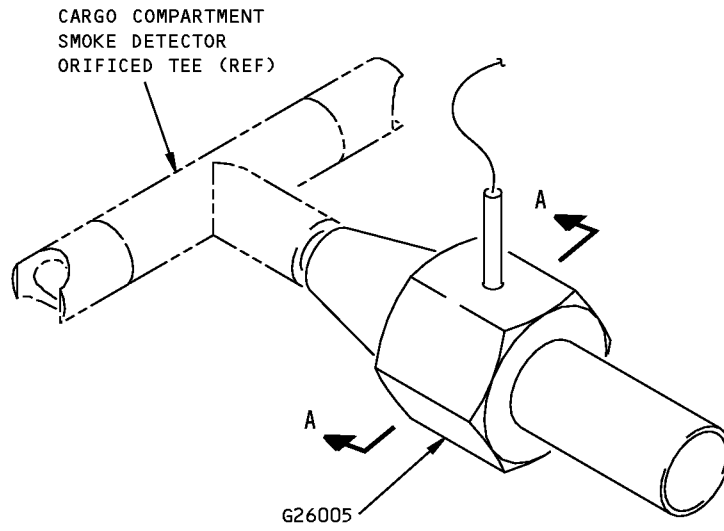
DIMENSIONS: G26005-9 and -13 - 2 x 2 x 7 inches (51 x 51 x 178 mm) (excluding box)
G26005-17 - 3 x 2 x 7 inches (76 x 51 x 178 mm) (excluding box)

NOTE: G26005-17 replaces G26005-13 for future procurement.
G26005-9 supersedes G26005-1.



**Hot Wire Anemometer Adapter
Figure 1 (Sheet 1 of 2)**

ILLUSTRATED TOOL AND EQUIPMENT MANUAL



**Hot Wire Anemometer Adapter
Figure 1 (Sheet 2 of 2)**

ILLUSTRATED TOOL AND EQUIPMENT MANUAL

PART NUMBER: B26004-1

NAME: TEST BOX - AUTOMATIC FIRE/OVERHEAT LOGIC TEST SYSTEM (AFOLTS) PRINTED CIRCUIT ASSEMBLY (PCA)

AIRPLANE MAINTENANCE: NO

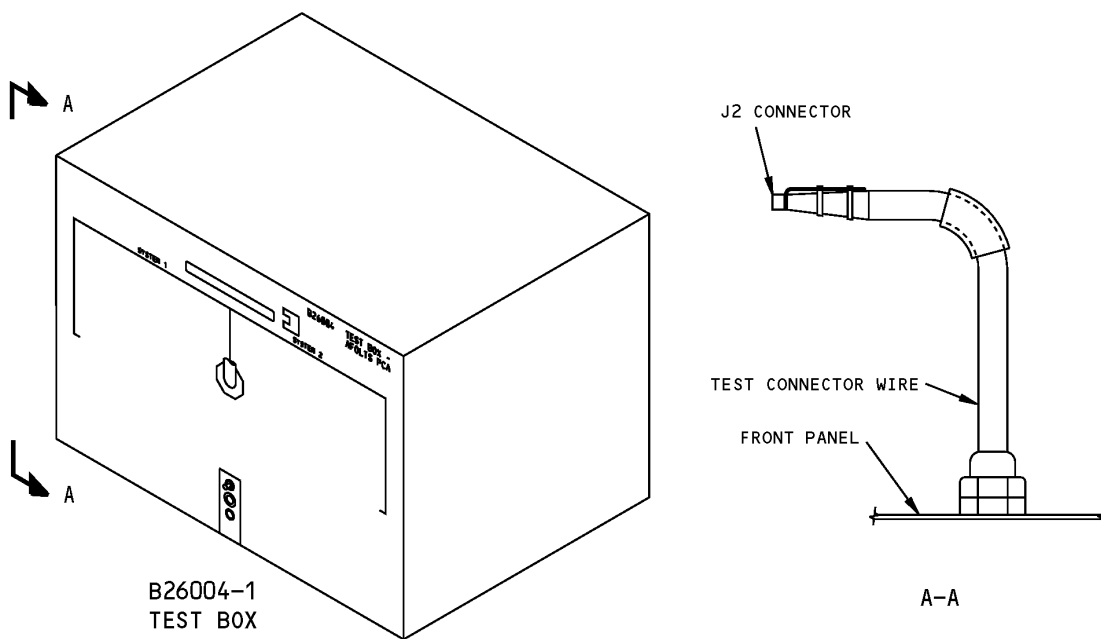
COMPONENT MAINTENANCE: YES

USAGE & DESCRIPTION: The B26004 drawing has been transferred to BAE Systems and will no longer be revised by Boeing. The B26004 inclusion in the 757 ITEM is for information and historical purposes only.

The B26004-1 test box is used during component maintenance on all 757 airplanes. B26004 is used in conjunction with a DC power supply and a multimeter. Refer to CMM 26-10-54 for complete usage instructions. B26004-1 consists of switches, resistors, banana jacks, lamps and electrical circuitry mounted on a panel and chassis assembly .

WEIGHT: 7 lb (3.2 kg)

DIMENSIONS: 9 x 12 x 17 inches (229 x 305 x 432 mm)



**AFOLTS PCA Test Box
Figure 1**



757

ILLUSTRATED TOOL AND EQUIPMENT MANUAL

PART NUMBER: A26001-165, -174, -187

NAME: ELECTRICAL TEST EQUIPMENT - BOTTLE SQUIB, FIRE EXTINGUISHER SYSTEM

AIRPLANE MAINTENANCE: YES

COMPONENT MAINTENANCE: NO

USAGE & DESCRIPTION: This tool is used to simulate the fire extinguisher bottle squib for voltage measurement during engine, APU, and cargo compartment fire extinguishing system test. Use only those adapter cables and protective caps which satisfy the specific carrier requirements. The adapter cable and protective caps will vary with the specific fire extinguisher bottle in use. Refer to AMM 26-21-00, 26-22-00 and 26-23-00 for complete usage instructions. See table for equipment application.

A26001-165 AND -174 USAGE TABLE				
FIRE EXTINGUISHER SYSTEM	FIRE EXTINGUISHER BOTTLE	ADAPTER CABLE A26001-	AIRPLANE EQUIPMENT NO.	AMM CHAPTER
ENGINE	S332T011-1, -16, -30	-3 OR -132	B17 B18	26-21-00
	S332T011-7, -9	-24 OR -137		
	S332T011-18	-132, -138		
	S332T011-21	-24, -139		
	S332T011-20, -29, -31, -32	-132, -138		
	S332T011-22	-4, -131		
APU	S332T011-1, -5, -16, -30	-3 OR -132	B25 OR B25 B138	26-22-00
	S332T011-18, -29, -32	-132, -138		
	S332T011-20, -31	-138		
	S332T011-21	-139		
	S332T011-22	-131		
CARGO COMPARTMENT	S453T201-2, -4, -7, -8, -17, -23, -24	-148	M10466 M10467	26-23-00
	S453T201-26, -27, -28, -36	-134, -148		



757

ILLUSTRATED TOOL AND EQUIPMENT MANUAL

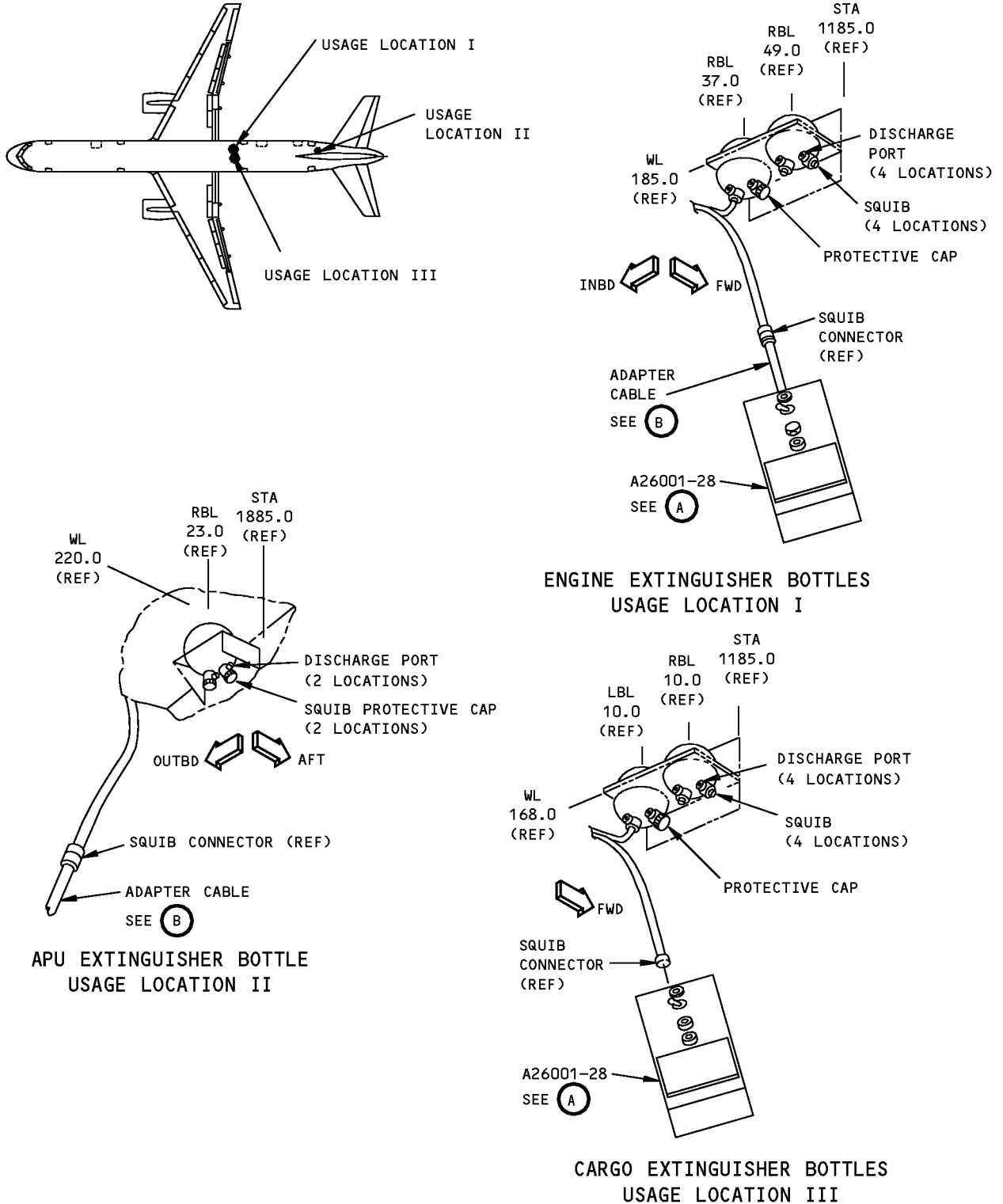
A26001-187 USAGE TABLE				
FIRE EXTINGUISHER SYSTEM	FIRE EXTINGUISHER BOTTLE	ADAPTER CABLE A26001-	AIRPLANE EQUIPMENT NO.	AMM CHAPTER
ENGINE	S332T011-1, -16, -30	-3 OR -132	B17 B18	26-21-00
	S332T011-18, -20, -29, -31, -32	-3 OR -132 AND -138		
	S332T011-7, -9, -15	-24 OR -137		
	S332T011-21	-24 OR -137 AND -139		
	S332T011-22	-131 AND -4 OR -135		
APU	S332T011-1, -5, -16, -30	-3 OR -132	B25 OR B25 B138	26-22-00
	S332T011-18, -20, -29, -31, -32	-3 OR -132 AND -138		
	S332T011-21	-24 OR -137 AND -139		
	S332T011-22	-131 AND -4 OR -135		
CARGO COMPARTMENT	S453T201-2, -4, -7, -8, -17, -23, -24	-148	M10466 M10467	26-23-00
	S453T201-28, -33, -36, -41	-134, -148		

WEIGHT: 10 lbs (4.5 kg)

DIMENSIONS: 6 x 14 x 15 inches (152 x 356 x 381 mm)

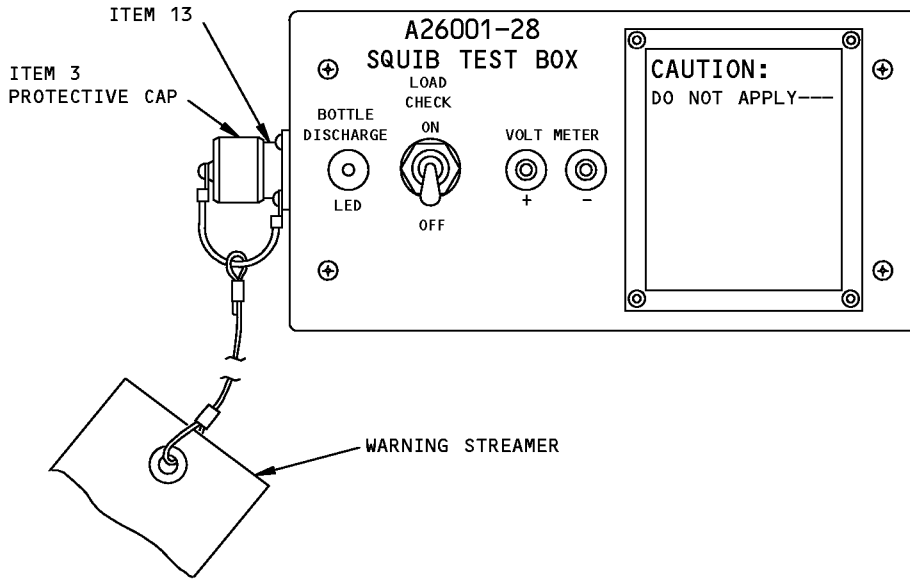
NOTE: A26001-187 replaces A26001-174 for future procurement.
 A26001-174 replaces A26001-165 for future procurement.
 A26001-165 supersedes A26001-133.
 A26001-133 supersedes A26001-106.
 A26001-106 supersedes A26001-72.
 A26001-72 supersedes A26001-69.
 A26001-69 supersedes A26001-100, -41.
 A26001-165, -174, -187 is the test equipment.
 A26001-3, -24, -132, -134, -137, -138, -139, -148 are cable adapter assemblies.
 A26001-29, -32, -33, -54, -55, -56, -57, -82, -120, -125, -129, and -130 are shorting plug assemblies that have been replaced with M83723/60 protective caps.

ILLUSTRATED TOOL AND EQUIPMENT MANUAL



**Fire Extinguisher System Bottle Squib Electrical Test Equipment
Figure 1 (Sheet 1 of 2)**

ILLUSTRATED TOOL AND EQUIPMENT MANUAL

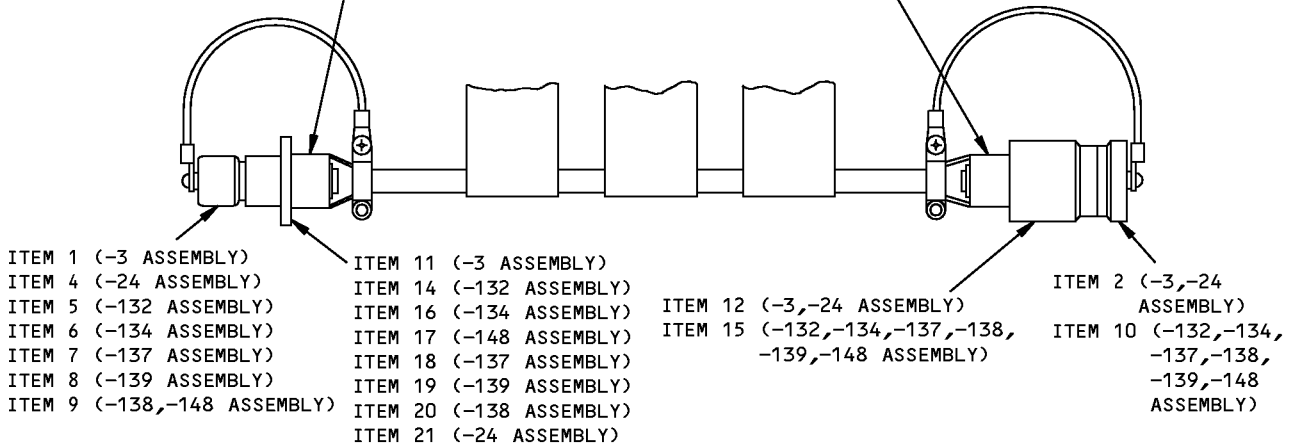


A26001-28 TEST BOX ASSEMBLY

(A)

- ITEM 22 (-139 ASSEMBLY)
- ITEM 23 (-137,-138,-148 ASSEMBLY)
- ITEM 24 (-132,-134 ASSEMBLY)
- ITEM 25 (-3 ASSEMBLY)
- ITEM 26 (-24 ASSEMBLY)

- ITEM 23 (-132,-134,-137,-138,-139,-148 ASSEMBLY)
- ITEM 26 (-3,-24 ASSEMBLY)



FOR SQUIB CONNECTOR

A26001-3,-24,-132,-134,-137,-138,-139,-148 ADAPTER CABLE ASSEMBLY

(B)

**Fire Extinguisher System Bottle Squib Electrical Test Equipment
Figure 1 (Sheet 2 of 2)**



757

ILLUSTRATED TOOL AND EQUIPMENT MANUAL

REPAIRABLE/REPLACEABLE PARTS		
ITEM NO.	PART NO.	NOMENCLATURE
1	MS27294-7	CAP - PROTECTIVE (OPT TO M83723/60-18AC)
2	MS27293-1	CAP - PROTECTIVE (OPT TO M83723/59-210AC)
3	MS27295-1	CAP - PROTECTIVE (OPT TO M83723/60-210AC)
4	MS27294-1	CAP - PROTECTIVE (OPT TO M83723/60-110AC)
5	M83723/60-18AC	CAP - PROTECTIVE (OPT TO MS27294-7)
6	M83723/60-28AC	CAP - PROTECTIVE (OPT TO MS27295-7)
7	M83723/60-110AC	CAP - PROTECTIVE (OPT TO MS27294-1)
8	M83723/60-112AC	CAP - PROTECTIVE (OPT TO MS27294-2)
9	M83723/60-210AC	CAP - PROTECTIVE (OPT TO MS27295-1)
10	M83723/59-210AC	CAP - PROTECTIVE (OPT TO MS27293-1)
11	MS24264R8T3PN	CONNECTOR J1 (OPT TO M83723/83R83N)
12	MS24266R10B5SN	CONNECTOR P1 (OPT TO M83723/75R105N)
13	MS24264R10B5PN	CONNECTOR J1 (OPT TO M83723/72R105N)
14	M83723/83R83N	CONNECTOR J1 (OPT TO MS24264R8T3PN)
15	M83723/75R105N	CONNECTOR P1 (OPT TO MS24266R10B5SN)
16	M83723/72R83N	CONNECTOR J1 (OPT TO MS24264R8B3PN)
17	M83723/72R105N	CONNECTOR J1 (OPT TO MS24264R10B5PN)
18	M83723/83R10510	CONNECTOR J1 (OPT TO MS24264R10T510)
19	M83723/83R123N	CONNECTOR J1 (OPT TO MS24264R12T3PN)
20	M83723/72R1059	CONNECTOR J1 (OPT TO MS24264R10B5P9)
21	MS24264R10T5P10	CONNECTOR J1 (OPT TO M83723/83R10510 OR M83723/85R10510)
22	M85049/2-6C	STRAIN RELIEF (OPT TO MS27291-2)
23	M85049/2-4C	STRAIN RELIEF (OPT TO MS27291-1)
24	M85049/52-1-8	STRAIN RELIEF (OPT TO MS27291-13)
25	MS27291-13	SUPPORT CABLE (OPT TO M85049/52-1-8)
26	MS27291-1	SUPPORT CABLE (OPT TO M85049/52-1-10)



757

ILLUSTRATED TOOL AND EQUIPMENT MANUAL

PART NUMBER: B26003-1, -2, -3

NAME: TEST EQUIPMENT - ENGINE FIRE EXTINGUISHER

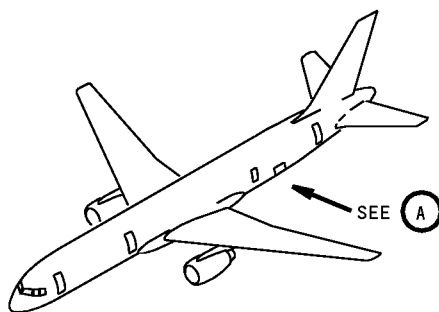
AIRPLANE MAINTENANCE: YES

COMPONENT MAINTENANCE: NO

USAGE & DESCRIPTION: The B26003 tools are used to pressurize the PW2000 and RB211 engines for leak checks on the engine fire extinguishing systems. The B26003-3 tester is used on RB211 engines. The B26003-2 tester is used on PW2000 engines. B26003-1 includes all the tools used from the -2 and -3 testers and can be used on either engine. Common components for all three testers includes a -4 regulator assembly, an MS21916-16-4 small reducer, an MS21916-20-4 large reducer, an MS21913-16 small plug and an MS21913-20 large plug. The B26003-3 tester includes the -7 RR plug assembly and the -17 RR clamp assembly. The B26003-2 tester includes the -5 aft PW clamp assembly and the -6 forward PW clamp assembly. Refer to AMM 26-21-00 for complete usage instructions.

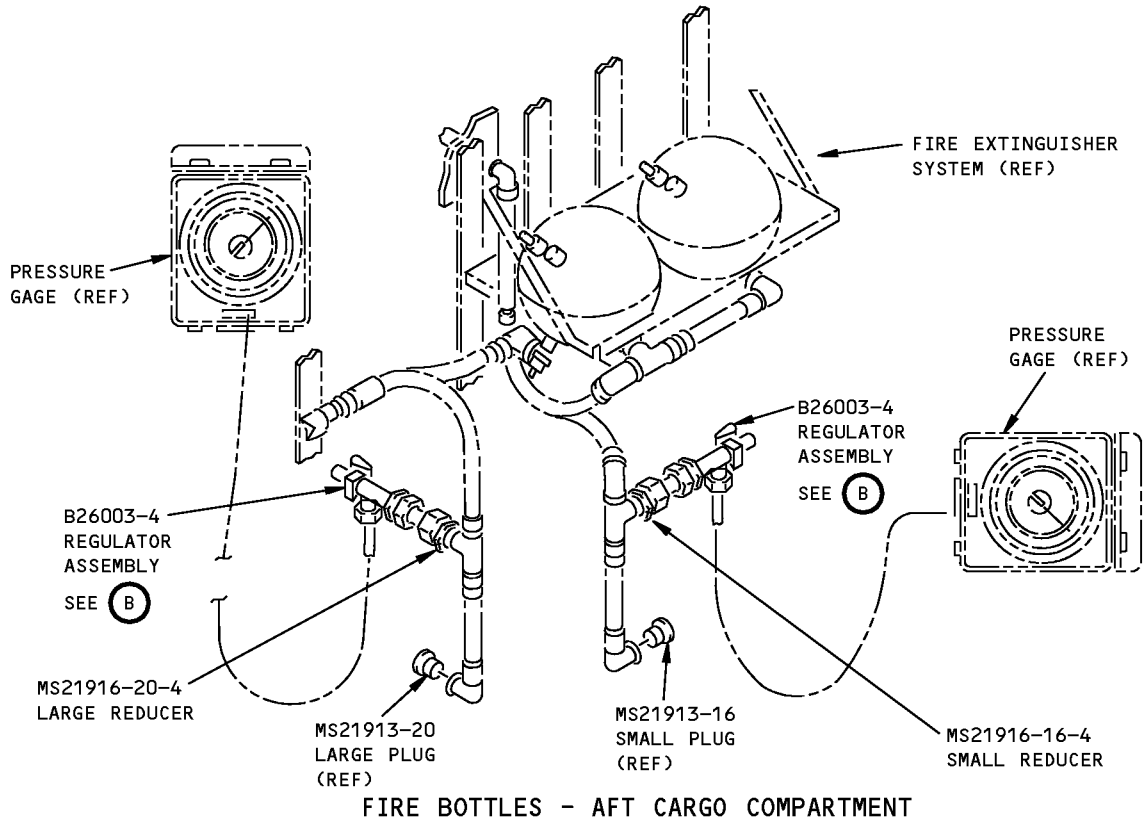
WEIGHT: 8 lbs (3.6 kg)

DIMENSIONS: 10 x 14 x 18 inches (254 x 356 x 457 mm)

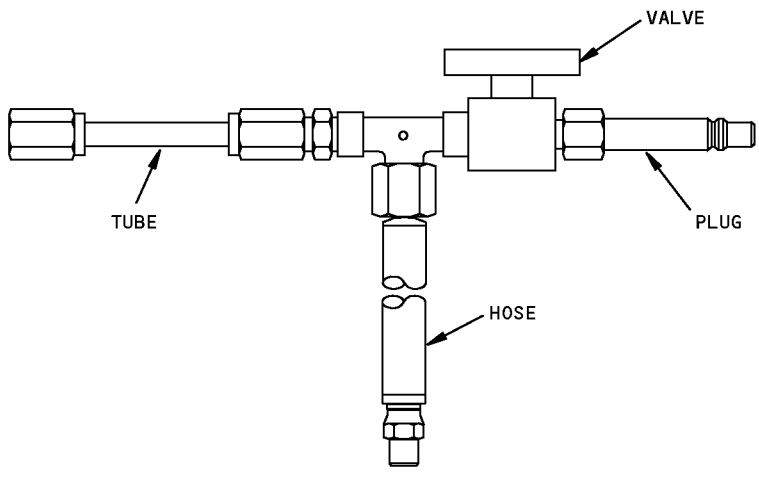


**Fire Extinguisher System - Engine Test Equipment
Figure 1 (Sheet 1 of 3)**

ILLUSTRATED TOOL AND EQUIPMENT MANUAL



(A)

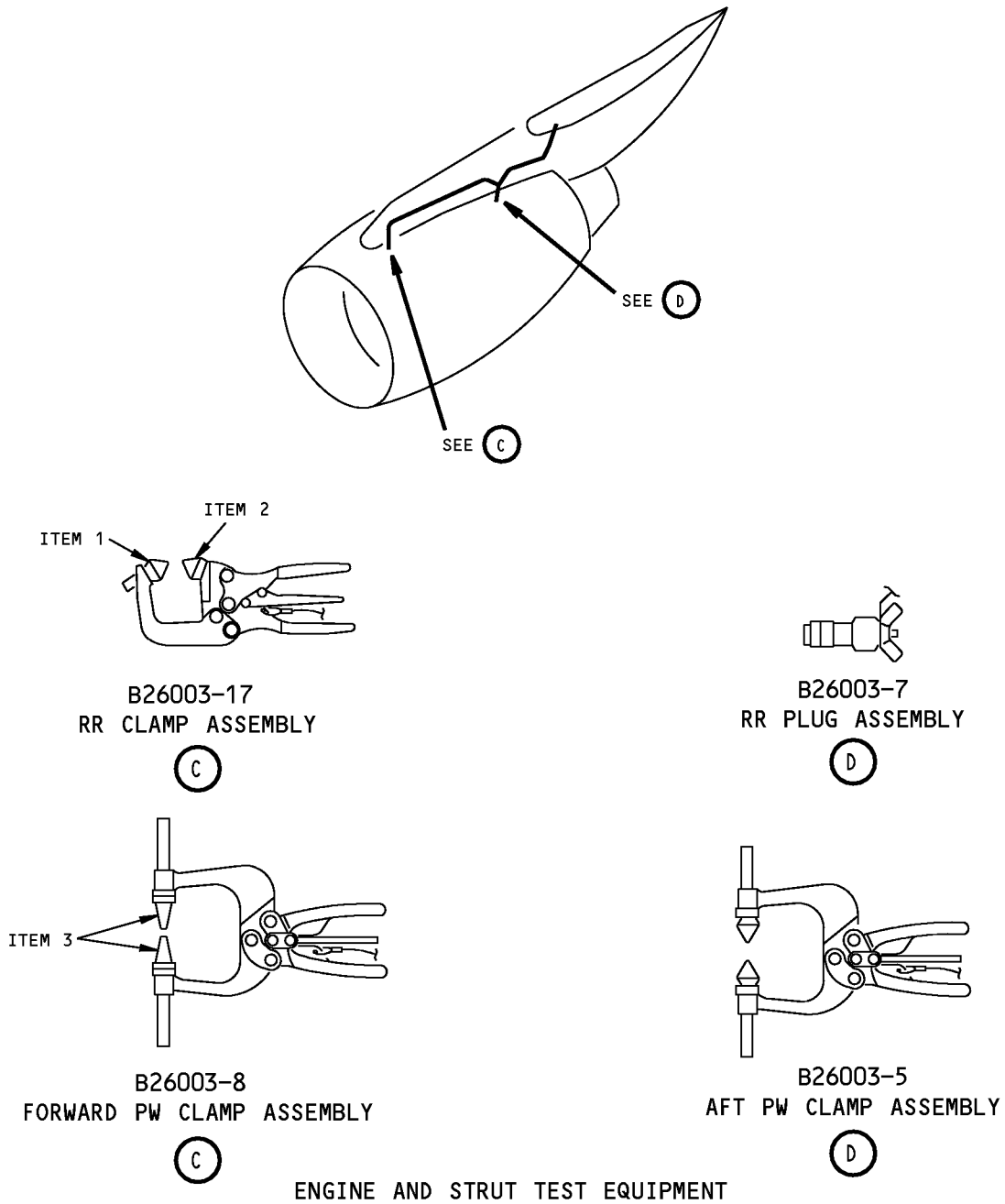


B26003-4 REGULATOR ASSEMBLY

(B)

**Fire Extinguisher System - Engine Test Equipment
Figure 1 (Sheet 2 of 3)**

ILLUSTRATED TOOL AND EQUIPMENT MANUAL



**Fire Extinguisher System - Engine Test Equipment
Figure 1 (Sheet 3 of 3)**



757

ILLUSTRATED TOOL AND EQUIPMENT MANUAL

REPAIRABLE/REPLACEABLE PARTS			
ITEM NO.	PART NO.	NOMENCLATURE	VENDOR CODE
1	B26003-13	SPINDLE	V99862
2	B26003-14	SPINDLE	V99862
3	59589-074	STOPPER	V86917

ILLUSTRATED TOOL AND EQUIPMENT MANUAL

PART NUMBER: A26003-7, -10

NAME: TEST EQUIPMENT - REGULATOR, CARGO FIRE EXTINGUISHING

AIRPLANE MAINTENANCE: YES

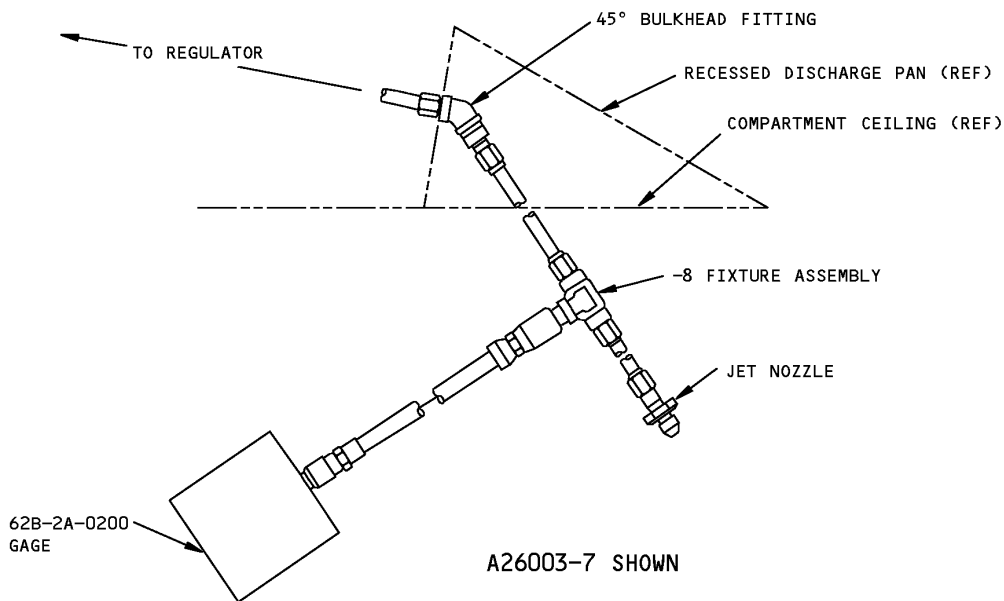
COMPONENT MAINTENANCE: NO

USAGE & DESCRIPTION: Used to check regulator in metered cargo fire extinguishing system. Refer to AMM 26-23-00 for further usage instructions. This tool is used on 757-200 and -300 ETOPS only. The -7 consists of a -8 fixture assembly, a 62B-2A-0200 gauge, 3 AN929-4J nozzle pressure caps and a -3 box assembly. The -10 consists of a -11 fixture assembly, a -12 gauge, 3 AN929-4J nozzle pressure caps and a -13 box assembly.

WEIGHT: 12 lbs (5.4 kg)

DIMENSIONS: 18 x 18 x 30 inches (457 x 457 x 762 mm)

NOTE: A26003-10 replaces A26003-7 for future procurement.
A26003-7 supersedes A26003-1.



**Cargo Fire Extinguishing Regulator Test Equipment
Figure 1**



757

ILLUSTRATED TOOL AND EQUIPMENT MANUAL

PART NUMBER: B26002-1

NAME: TEST EQUIPMENT - DISCHARGE LINE CARGO FIRE EXTINGUISHER

AIRPLANE MAINTENANCE: YES

COMPONENT MAINTENANCE: NO

USAGE & DESCRIPTION: The B26002-1 test equipment is used on all 757 model airplanes equipped with Boeing designed cargo fire suppression systems. This tool is used to cap the nozzles of cargo compartment fire extinguisher discharge lines for pressure decay testing. Refer to AMM 26-23-00 for complete usage instructions.

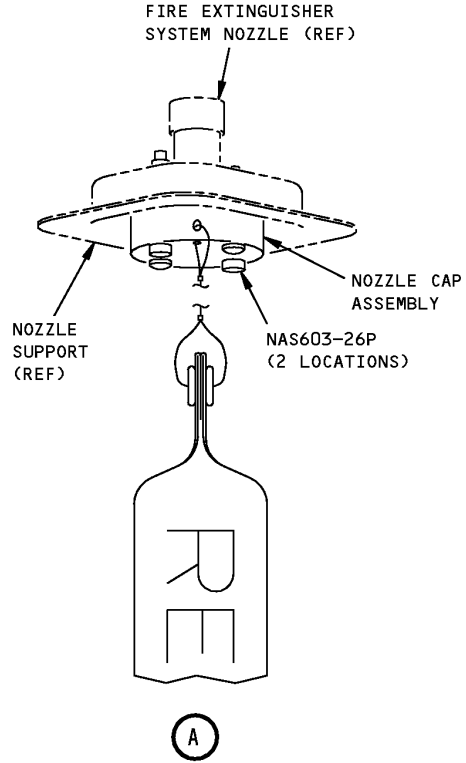
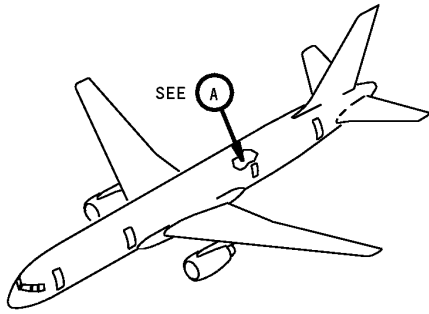
The B26002 equipment consists of:

B26002-1		
QUANTITY	NOMENCLATURE	PART NUMBER
4	NOZZLE CAP ASSEMBLY	B26002-2
8	SCREW	NAS60J-26P
1	STORAGE BOX	B26002-3

WEIGHT: 0.3 lbs (136 g)

DIMENSIONS: 2.25 x 5 inches (57 x 127 mm) (excluding box)

**757
ILLUSTRATED TOOL AND EQUIPMENT MANUAL**



**Discharge Line Cargo Fire Extinguisher Test Equipment
Figure 1**



757

ILLUSTRATED TOOL AND EQUIPMENT MANUAL

PART NUMBER: A26002-54

NAME: TEST BOX - TIME DELAY, CARGO FIRE EXTINGUISHER BOTTLE

AIRPLANE MAINTENANCE: YES

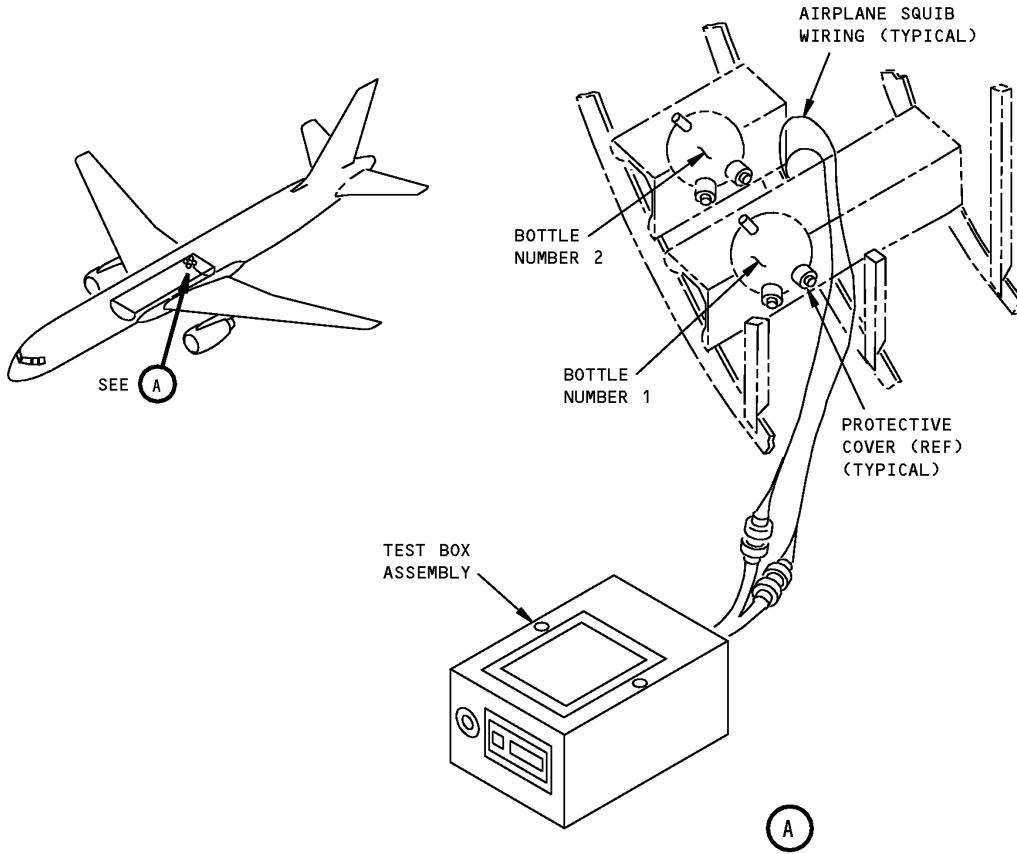
COMPONENT MAINTENANCE: NO

USAGE & DESCRIPTION: This tool is used to record the length of time between initiation, and subsequent engagement of the cargo fire extinguisher bottles time delay relay. Refer to AMM 26-23-00 for complete usage instructions. The tool consists of a -52 test box assembly, and -46 storage box assembly.

WEIGHT: 5 lbs (2.3 kg)

DIMENSIONS: 6 x 8 x 12 inches (152 x 203 x 305 mm)

757
ILLUSTRATED TOOL AND EQUIPMENT MANUAL



Cargo Fire Extinguisher Bottle Time Delay Test Box
Figure 1