

CHAPTER

28

FUEL



757
ILLUSTRATED TOOL AND EQUIPMENT MANUAL

CHAPTER 28
FUEL

Subject/Page	Date	Subject/Page	Date	Subject/Page	Date
EFFECTIVE PAGES		28-10-09		28-20-03	
1 thru 2	Sep 20/2008	1	Sep 20/2006	1	Sep 20/2006
28-CONTENTS		2	Sep 20/2006	2	Sep 20/2006
R 1	Sep 20/2008	3	Sep 20/2006	3	Sep 20/2006
2	BLANK	4	BLANK	4	BLANK
28-00-01		28-10-10		28-20-04	
1	Sep 20/2006	1	Sep 20/2006	1	Sep 20/2006
2	BLANK	2	Sep 20/2006	2	Sep 20/2006
28-00-02		28-10-11		3	Sep 20/2006
1	Sep 20/2006	1	Sep 20/2006	4	Sep 20/2006
2	BLANK	2	Sep 20/2006	28-20-05	
28-10-01		3	Sep 20/2006	1	Sep 20/2006
1	Sep 20/2006	4	BLANK	2	Sep 20/2006
2	BLANK	28-10-12		28-20-06	
28-10-02		R 1	Sep 20/2008	R 1	Sep 20/2008
1	Sep 20/2006	R 2	Sep 20/2008	R 2	Sep 20/2008
2	Sep 20/2006	R 3	Sep 20/2008	O 3	Sep 20/2008
28-10-03		4	BLANK	O 4	BLANK
1	Sep 20/2006	28-10-13		28-20-07	
2	Sep 20/2006	1	Sep 20/2006	1	Sep 20/2006
28-10-04		2	Sep 20/2007	2	Sep 20/2006
1	Sep 20/2006	28-10-14		28-20-08	
2	BLANK	R 1	Sep 20/2008	1	Sep 20/2006
28-10-05		R 2	Sep 20/2008	2	Sep 20/2006
1	Sep 20/2006	R 3	Sep 20/2008	28-40-01	
2	Sep 20/2006	R 4	Sep 20/2008	1	Sep 20/2006
3	Sep 20/2006	28-10-15		2	Sep 20/2006
4	Sep 20/2006	A 1	Sep 20/2008	3	Sep 20/2006
28-10-06		A 2	Sep 20/2008	4	Sep 20/2006
1	Sep 20/2007	A 3	Sep 20/2008	5	Sep 20/2006
2	Sep 20/2006	A 4	BLANK	6	BLANK
28-10-07		28-20-01		28-40-02	
1	Sep 20/2006	1	Sep 20/2006	1	Sep 20/2006
2	Sep 20/2006	2	Sep 20/2006	2	Sep 20/2006
3	Sep 20/2006	3	Sep 20/2006	3	Sep 20/2006
4	BLANK	4	BLANK	4	BLANK
28-10-08		28-20-02		28-40-03	
R 1	Sep 20/2008	1	Sep 20/2006	1	Sep 20/2006
2	Sep 20/2006	2	Sep 20/2006	2	Sep 20/2006
				3	Sep 20/2006

A = Added, R = Revised, O = Overflow, D = Deleted

28-EFFECTIVE PAGES



757
ILLUSTRATED TOOL AND EQUIPMENT MANUAL

CHAPTER 28
FUEL

Subject/Page	Date	Subject/Page	Date	Subject/Page	Date
28-40-03 (cont)					
4	BLANK				

A = Added, R = Revised, O = Overflow, D = Deleted

28-EFFECTIVE PAGES

Page 2
Sep 20/2008

D634N501



757

ILLUSTRATED TOOL AND EQUIPMENT MANUAL

TABLE OF CONTENTS

<u>Subject</u>	<u>Title</u>	<u>Part No.</u>
28-	FUEL	
28-10-01	ADAPTER ASSEMBLY - HOLLOW BOLT, FUEL LEAK TRACING	F70206-1
28-10-02	TEMPORARY REPAIR TOOL - SELF-SEALING RIVETS, FUEL SYSTEM	F70230-1
28-10-03	LEAKAGE TRACING DEVICE - INTEGRAL TANK LEAKAGE TEST	F71329
28-10-05	CHECK FIXTURE - SURGE TANK PRESSURE RELIEF VALVE	A28004-1
28-10-06	VENTILATION EQUIPMENT - FUEL TANK	A28003-1, -43
28-10-07	TORQUE SPANNER	ST2580-302
28-10-08	PRESSURE PLUG EQUIPMENT - FUEL SYSTEM	B28005-1
28-10-09	SEALING TOOL - RIVET, FUEL TANK	J28006-1
28-10-10	WATER MANOMETER - TEST EQUIPMENT	F72951-1
28-10-11	PRESSURIZATION EQUIPMENT - WING DRY BAY, FUEL LEAK DETECTION	B28008-10
28-10-12	CHECK FIXTURE EQUIPMENT - PRESSURE RELIEF VALVE	G28005-14, -18, -23, -29, -35, -42,
28-10-13	CONSOLE - SHOP AIR SUPPLY	J28010-1
28-10-14	PRESSURIZATION EQUIPMENT - WING DRY BAY, FUEL LEAK DETECTION	J28007-1, -10, -9,
28-10-15	WRENCH KIT - AUXILIARY FUEL TANK	B28010-1, -2
28-20-01	ADAPTER - SUMP DRAIN VALVE, REMOVAL/INSTALLATION	B28001-1
28-20-02	PULLER - MAIN TANK BOOST PUMP ASSEMBLY	B28003-1
28-20-03	ALIGNMENT EQUIPMENT - FUEL SHUTOFF VALVE	B28009-1
28-20-04	TEST BOX - FUEL LEVEL SENSORS, SURGE TANK	A28006-2
28-20-05	PRESSURE TEST ADAPTERS - ENGINE FUEL FEED	B28007-1, -2
28-20-06	TEST EQUIPMENT - LEAK AND PRESSURE, AUXILIARY POWER UNIT (APU) FUEL LINE SHROUD	A28005-42, -50, -53
28-20-07	ADAPTER SHAFT ALIGNMENT FIXTURE	MIT65B92408-1
28-20-08	GO/NO-GO GAGE FOR ASSEMBLY OF WIGGINS BACC42R COUPLING	ST8709H
28-40-01	TEST BOX - FUEL QUANTITY INDICATING SYSTEM (FQIS)	A28007-41
28-40-02	SOCKET - INSTALLATION/REMOVAL, COLLIMATOR SLEEVE	B28004-1
28-40-03	EXTENDER BOARD - SURGE TANK FUEL LEVEL SENSOR	A28009-13, -8

28-CONTENTS

Page 1
Sep 20/2008

D634N501



757

ILLUSTRATED TOOL AND EQUIPMENT MANUAL

PART NUMBER: MIT65B92408-1 WAS MOVED TO 28-20-07



757

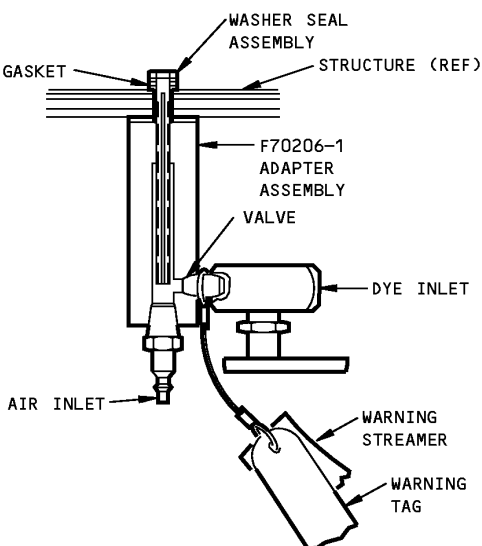
ILLUSTRATED TOOL AND EQUIPMENT MANUAL

PART NUMBER: ST8709H WAS MOVED TO 28-20-07

ILLUSTRATED TOOL AND EQUIPMENT MANUAL

PART NUMBER: F70206-1**NAME:** ADAPTER ASSEMBLY - HOLLOW BOLT, FUEL LEAK TRACING**AIRPLANE MAINTENANCE:** YES**COMPONENT MAINTENANCE:** NO

USAGE & DESCRIPTION: The F70206-1 adapter assembly is used on all 757 airplanes. F70206 allows for the introduction of dye and air pressure to the area of a suspected leak. F70206 is used in an integral fuel tank, by using an existing fastener hole for leak tracing. Remove an existing 1/4 to 3/4-inch diameter fastener from structure in the vicinity of a suspected leak. The slotted bolt, with NAS washer, gasket and washer sized for the hole, is inserted from the inside of the tank and screwed into the body on the outside of the tank. Bolt length will accommodate structure to 2-3/4-inch thick. Refer to AMM 28-11-00 for complete usage instructions. F70206 consists of a steel body drilled and tapped to take a 4-inch clamping bolt, an air inlet connections and a valve for applying a dye.

DIMENSIONS: 6 x 9 x 9 inches (152 x 229 x 229 mm)

REPAIRABLE/REPLACEABLE PARTS

**Fuel Leak Tracing Hollow Bolt Adapter Assembly
Figure 1**



757

ILLUSTRATED TOOL AND EQUIPMENT MANUAL

PART NUMBER: F70230-1

NAME: TEMPORARY REPAIR TOOL - SELF-SEALING RIVETS, FUEL SYSTEM

AIRPLANE MAINTENANCE: YES

COMPONENT MAINTENANCE: NO

USAGE & DESCRIPTION: The F70230-1 temporary repair tool is used on all 757 airplanes. F70230 is used to inject fuel tank sealant when making temporary repairs on integral fuel tank fasteners. F70230 is a hollow steel rod and internal piston assembly. The piston base is machined to fit in a customer-furnished rivet gun. The top of F70230 uses an O-ring seal to mate against the tank fastener. When the F70230 is charged with sealant, the customer-furnished rivet gun drives the sealant out around the fasteners. Refer to AMM 28-11-00 for complete usage instructions. F70230-1 consists of:

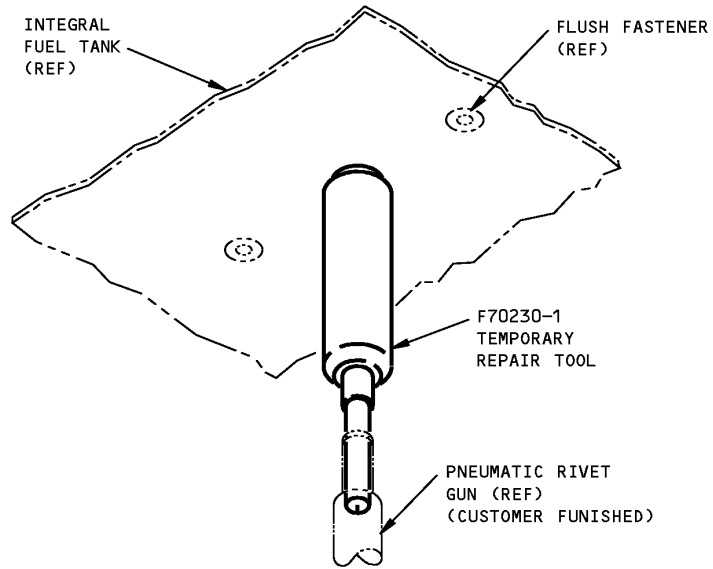
F70230-1		
QUANTITY	NOMENCLATURE	PART NUMBER
1	PISTON	F70230-2
1	BODY	F70230-3
10	O-RING (STORED IN BAG)	AN6227B-11 ^{*[1]}
1	BAG	BACB48A8N6A

*[1] OPTION: 2-113, MANUFACTURED BY PARKER SEAL COMPANY, CULVER CITY, CA

WEIGHT: 1 lb (0.45 kg)

DIMENSIONS: 1.5 x 1.5 x 5 inches (38 x 38 x 127 mm)

ILLUSTRATED TOOL AND EQUIPMENT MANUAL



**Fuel System Self-Sealing Rivets Temporary Repair Tool
Figure 1**



757

ILLUSTRATED TOOL AND EQUIPMENT MANUAL

PART NUMBER: F71329

NAME: LEAKAGE TRACING DEVICE - INTEGRAL TANK LEAKAGE TEST

AIRPLANE MAINTENANCE: YES

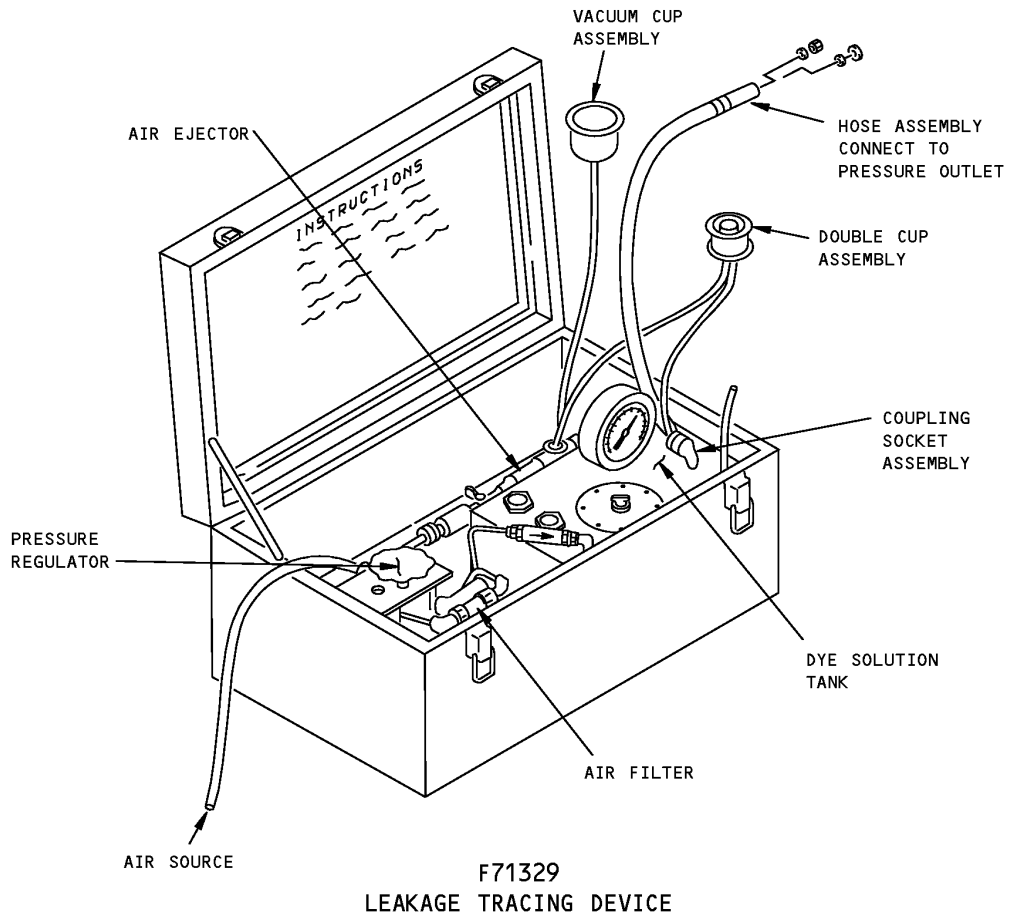
COMPONENT MAINTENANCE: NO

USAGE & DESCRIPTION: The F71329 leakage tracing device is used on all 757 airplanes. F71329 is used to apply a pressurized tracing medium to the exterior surface of the integral tank at the point of leakage. Leak detection is then accomplished on the inside of the tank and closing up the tank is not necessary. Refer to the current F71329 drawing and AMM 28-11-00 for complete usage instructions. F71329 consists of a box containing an air filter, a pressure regulator, a tank for dye solution or other media, an air ejector for a source of unregulated vacuum, a hose assembly, a vacuum cup assembly, a fastener assembly and a double cup assembly.

WEIGHT: 40 lbs (18 kg)

DIMENSIONS: 10 x 14 x 18 inches (254 x 356 x 457 mm)

ILLUSTRATED TOOL AND EQUIPMENT MANUAL



**Integral Tank Leakage Test, Leakage Tracing Device
Figure 1**



757

ILLUSTRATED TOOL AND EQUIPMENT MANUAL

PART NUMBER: B28002-1 WAS MOVED TO 12-10-04



757

ILLUSTRATED TOOL AND EQUIPMENT MANUAL

PART NUMBER: A28004-1

NAME: CHECK FIXTURE - SURGE TANK PRESSURE RELIEF VALVE

AIRPLANE MAINTENANCE: YES

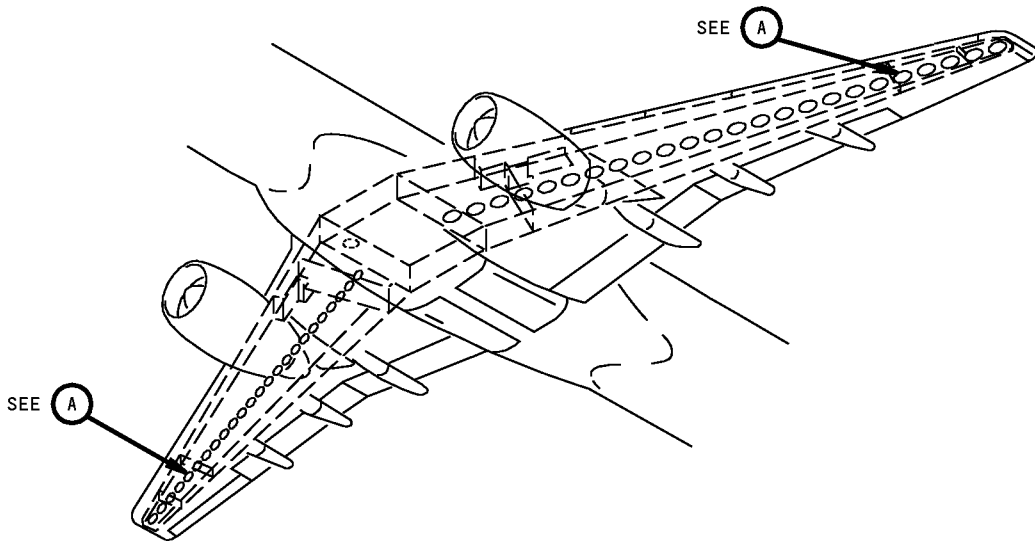
COMPONENT MAINTENANCE: NO

USAGE & DESCRIPTION: A28004-1 is used on all 757 airplanes. A28004-1, together with a pressure source of 0 to 1.50 psig and a vacuum source of 0 to -3.00 psig are used to check the actuating pressure of the wing surge tank pressure relief valve. Refer to AMM 28-13-04 for complete usage instructions. A28004-1 consists of an A28004-2 fixture assembly contained in a storage box.

WEIGHT: 5 lbs (2.3 kg)

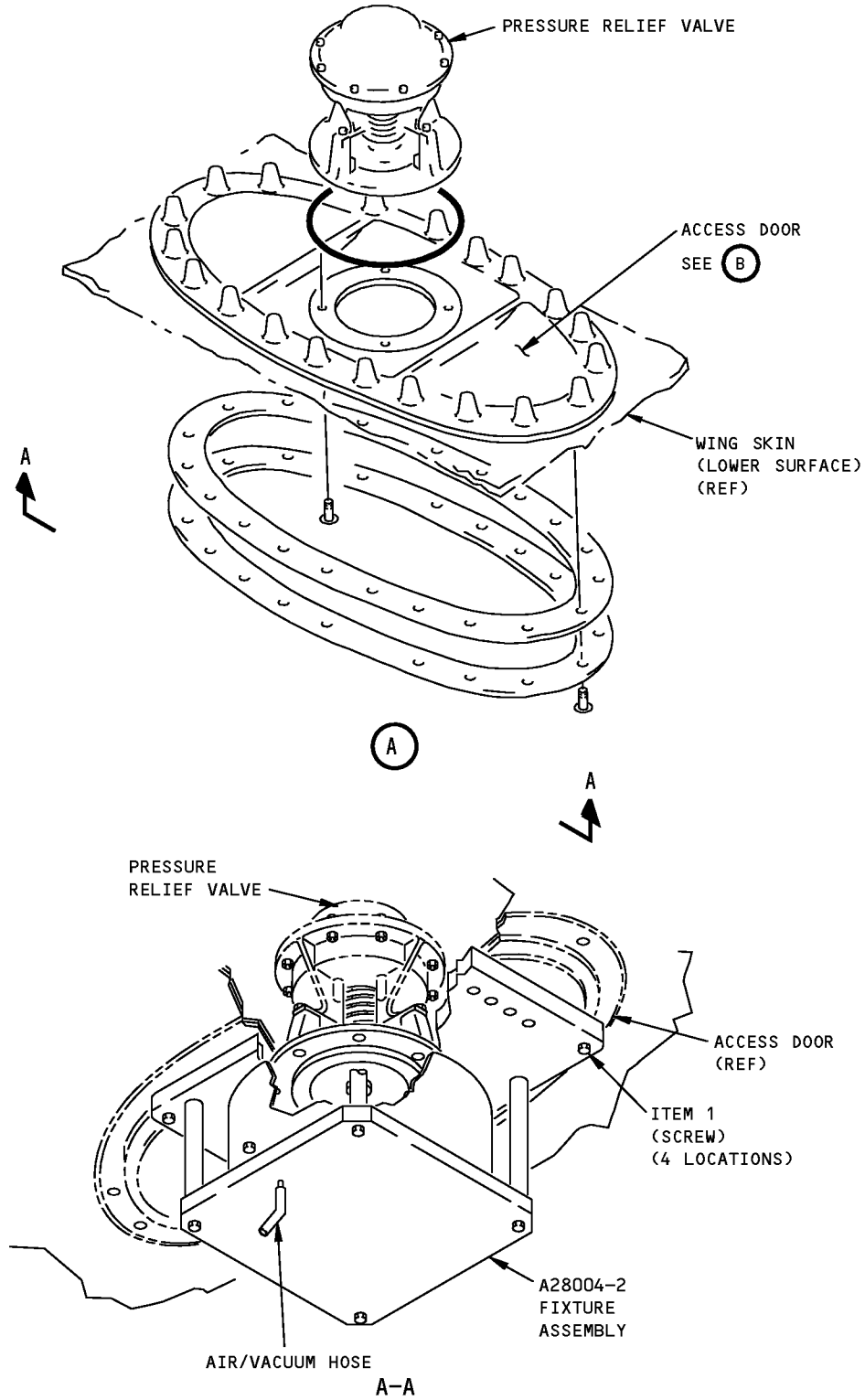
DIMENSIONS: 7 x 9 x 10 inches (178 x 229 x 254 mm)

NOTE: G28005 replaces A28004 for future procurement.



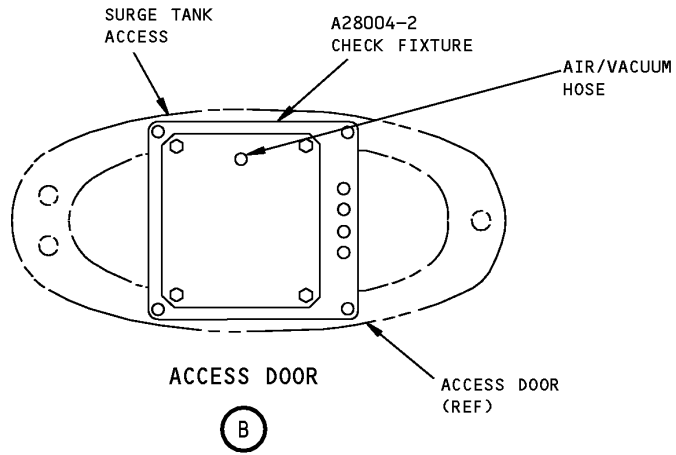
**Surge Tank Pressure Relief Valve Check Fixture
Figure 1 (Sheet 1 of 3)**

757
ILLUSTRATED TOOL AND EQUIPMENT MANUAL



Surge Tank Pressure Relief Valve Check Fixture
Figure 1 (Sheet 2 of 3)

757
ILLUSTRATED TOOL AND EQUIPMENT MANUAL



Surge Tank Pressure Relief Valve Check Fixture
Figure 1 (Sheet 3 of 3)

REPAIRABLE/REPLACEABLE PARTS			
ITEM NO.	PART NO.	NOMENCLATURE	VENDOR CODE
1	MS16998-48	SOCKET HEAD CAP SCREW	



757

ILLUSTRATED TOOL AND EQUIPMENT MANUAL

PART NUMBER: A28003-1, -43

NAME: VENTILATION EQUIPMENT - FUEL TANK

AIRPLANE MAINTENANCE: YES

COMPONENT MAINTENANCE: NO

USAGE & DESCRIPTION: The A28003-1 or -43 (preferred) ventilation equipment is used on all 757 airplanes. A28003 is used to ventilate the surge tank, center auxiliary fuel tank and the main tank. The main fuel tank is ventilated using the A28003 on top of the overwing fueling port. Refer to AMM 28-11-00 for complete usage instructions. A28003-1 and -43 consist of:

A28003-1		
QUANTITY	NOMENCLATURE	PART NUMBER
1	AIR MOVER ASSEMBLY	A28003-2
1	TANK ADAPTER ASSEMBLY	A28003-8
1	AIR MOVER ASSEMBLY	A28003-30
1	STORAGE BOX	

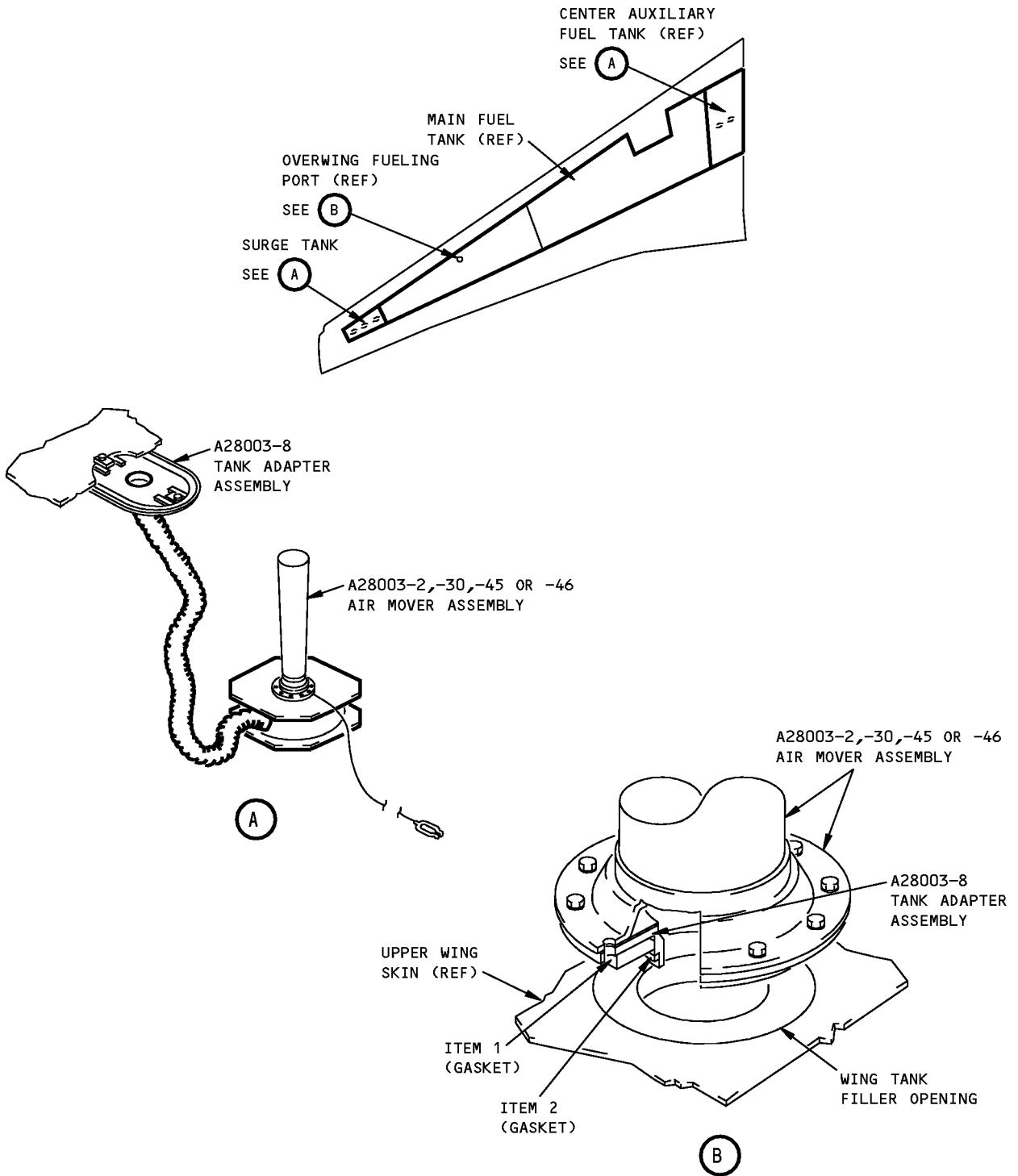
A28003-43		
QUANTITY	NOMENCLATURE	PART NUMBER
1	TANK ADAPTER ASSEMBLY	A28003-8
1	AIR MOVER ASSEMBLY	A28003-45
1	AIR MOVER ASSEMBLY	A28003-46
1	STORAGE BOX	

WEIGHT: 60 lbs (27 kg)

DIMENSIONS:
A28003-2 - 40 x 40 x 40 inches (1016 x 1016 x 1016 mm)
A28003-30 and A28003-8 - 8 x 13 x 36 inches (203 x 330 x 914 mm)
A28003-45 - 40 x 40 x 40 inches (1016 x 1016 x 1016 mm)
A28003-46 and A28003-8 - 8 x 13 x 36 inches (203 x 330 x 914 mm)

NOTE: A28003-43 replaces A28003-1 for future procurement.

ILLUSTRATED TOOL AND EQUIPMENT MANUAL



**Fuel Tank Ventilation Equipment
Figure 1**



757

ILLUSTRATED TOOL AND EQUIPMENT MANUAL

PART NUMBER: ST2580-302

NAME: TORQUE SPANNER

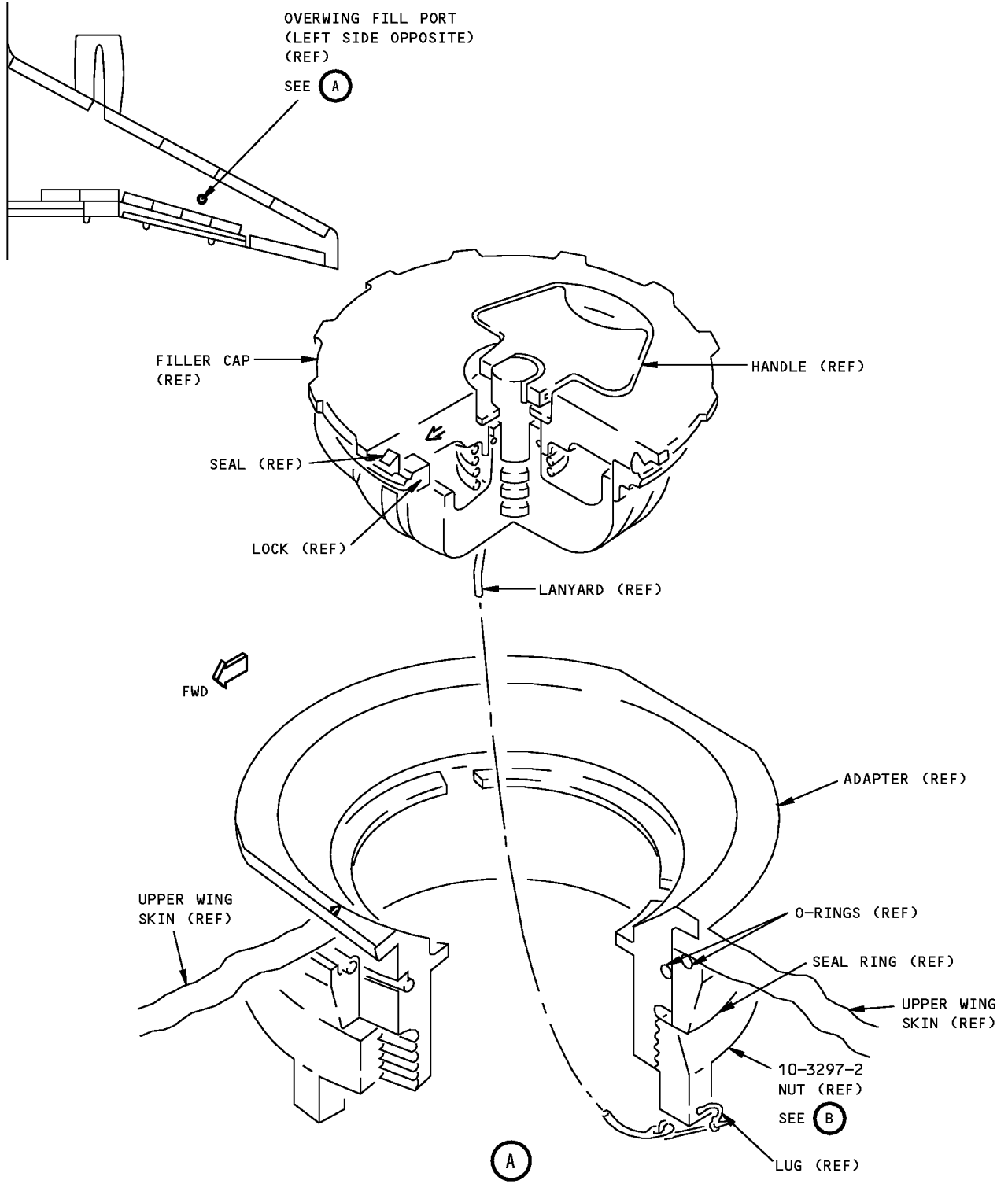
AIRPLANE MAINTENANCE: YES

COMPONENT MAINTENANCE: NO

USAGE & DESCRIPTION: The ST2580-302 torque spanner is used on all 757 airplanes. ST2580-302 is used to install or remove the 10-3297-2 overwing fueling receptacle nut. Refer to AMM 28-11-04 for complete usage instructions. ST2580-302 is fabricated from mild steel. ST2580-302 has two slots for lug engagement and adapts to a 1/2-inch square drive wrench.

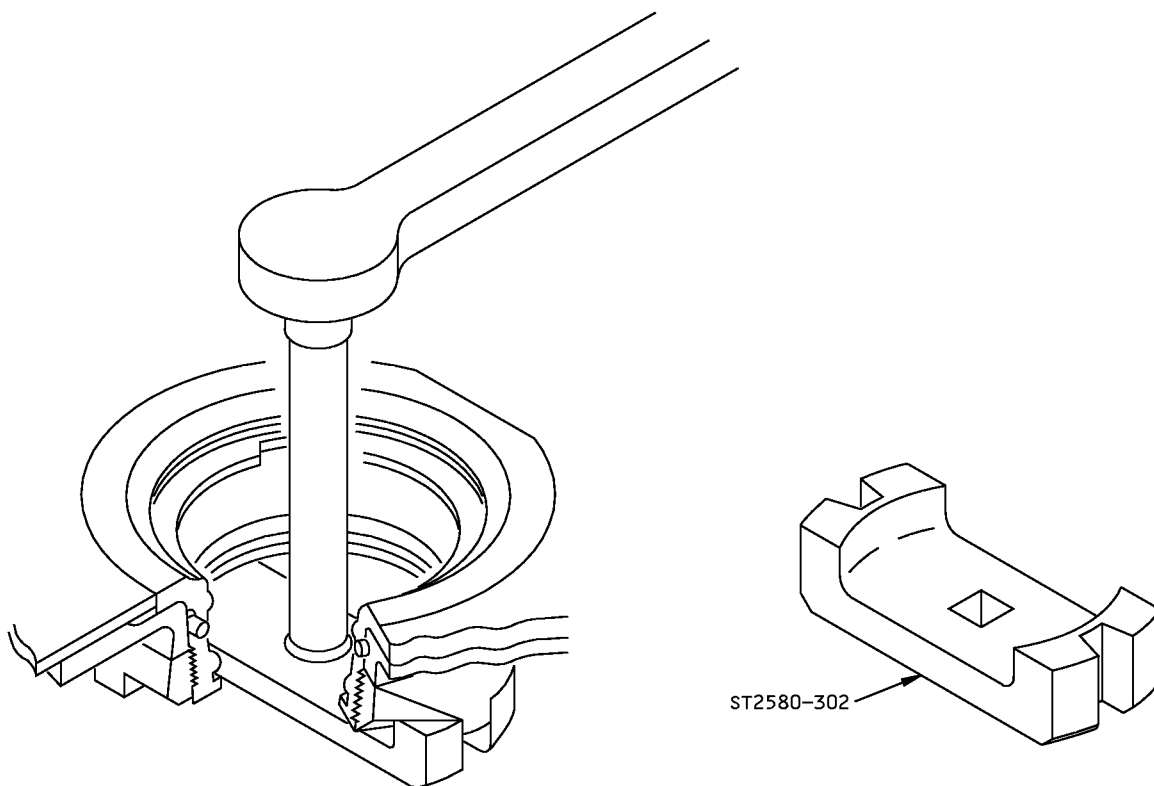
DIMENSIONS: 1 x 1 1/2 x 4 7/8 inches (25.4 x 38.1 x 123.825 mm)

ILLUSTRATED TOOL AND EQUIPMENT MANUAL



Torque Spanner
Figure 1 (Sheet 1 of 2)

757
ILLUSTRATED TOOL AND EQUIPMENT MANUAL



(B)

Torque Spanner
Figure 1 (Sheet 2 of 2)



757

ILLUSTRATED TOOL AND EQUIPMENT MANUAL

PART NUMBER: B28005-1

NAME: PRESSURE PLUG EQUIPMENT - FUEL SYSTEM

AIRPLANE MAINTENANCE: YES

COMPONENT MAINTENANCE: NO

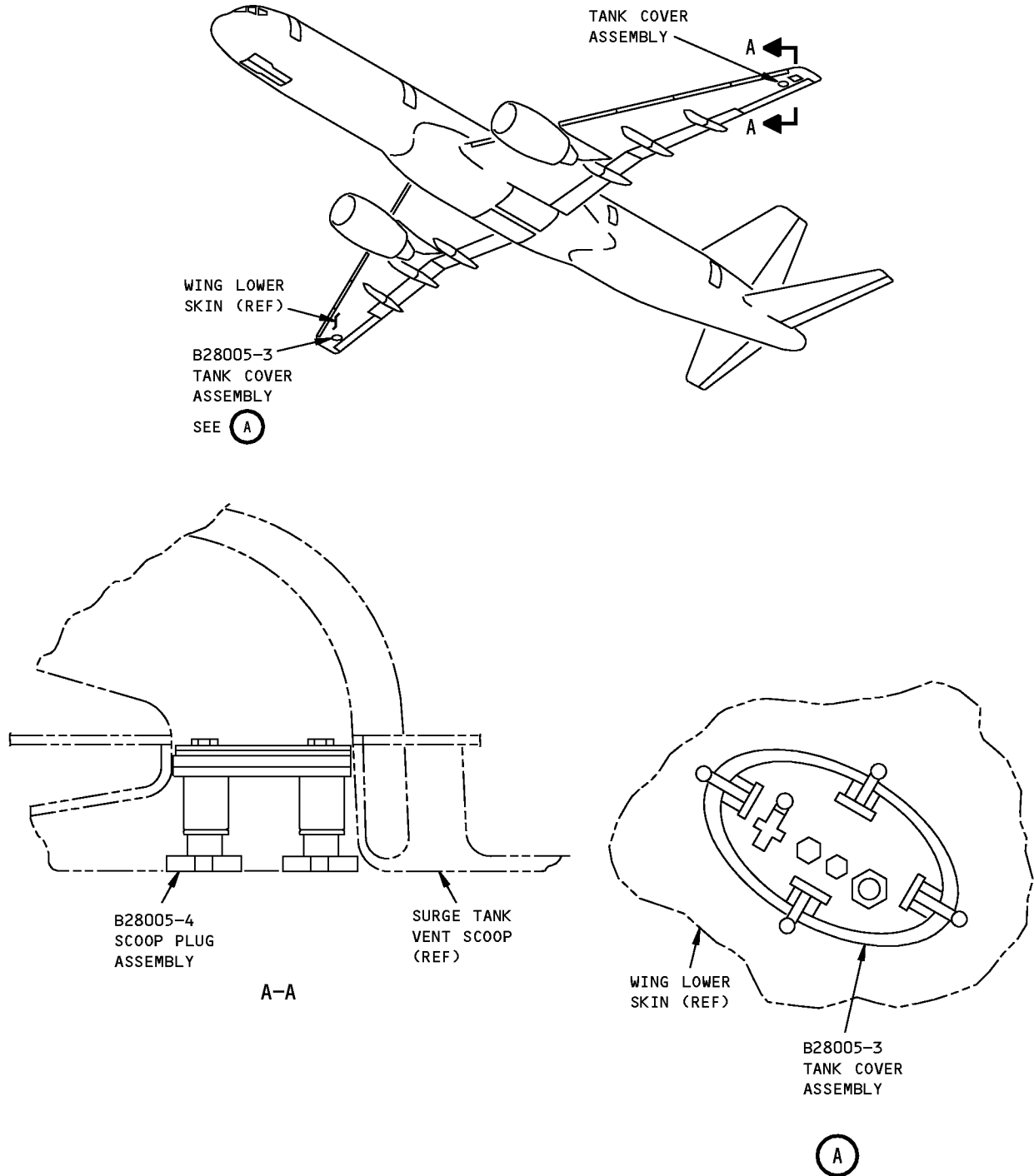
USAGE & DESCRIPTION: The B28005-1 pressure plug equipment is used on all 757 airplanes. B28005 is used in conjunction with customer furnished F72951-1 water manometer assembly, for the 4 psi fuel pressure seal test. B28005 is used to plug the pressure relief valve door openings in the lower outboard wing panels between wing station 681.5 and 711.5. B28005 is also used to plug vent scoops in the lower outboard wings between wing station 711.5 and 743.5. Refer to AMM 28-11-00 for complete usage instructions. B28005-1 consists of:

B28005-1		
QUANTITY	NOMENCLATURE	PART NUMBER
2	TANK COVER ASSEMBLY	B28005-3
2	SCOOP PLUG ASSEMBLY	B28005-4
1	STORAGE BOX	

WEIGHT: 12 lbs (5.4 kg)

DIMENSIONS: 8 x 18 x 22 inches (203 x 457 x 559 mm)

ILLUSTRATED TOOL AND EQUIPMENT MANUAL



Fuel System Pressure Plug Equipment
Figure 1



757

ILLUSTRATED TOOL AND EQUIPMENT MANUAL

PART NUMBER: J28006-1

NAME: SEALING TOOL - RIVET, FUEL TANK

AIRPLANE MAINTENANCE: YES

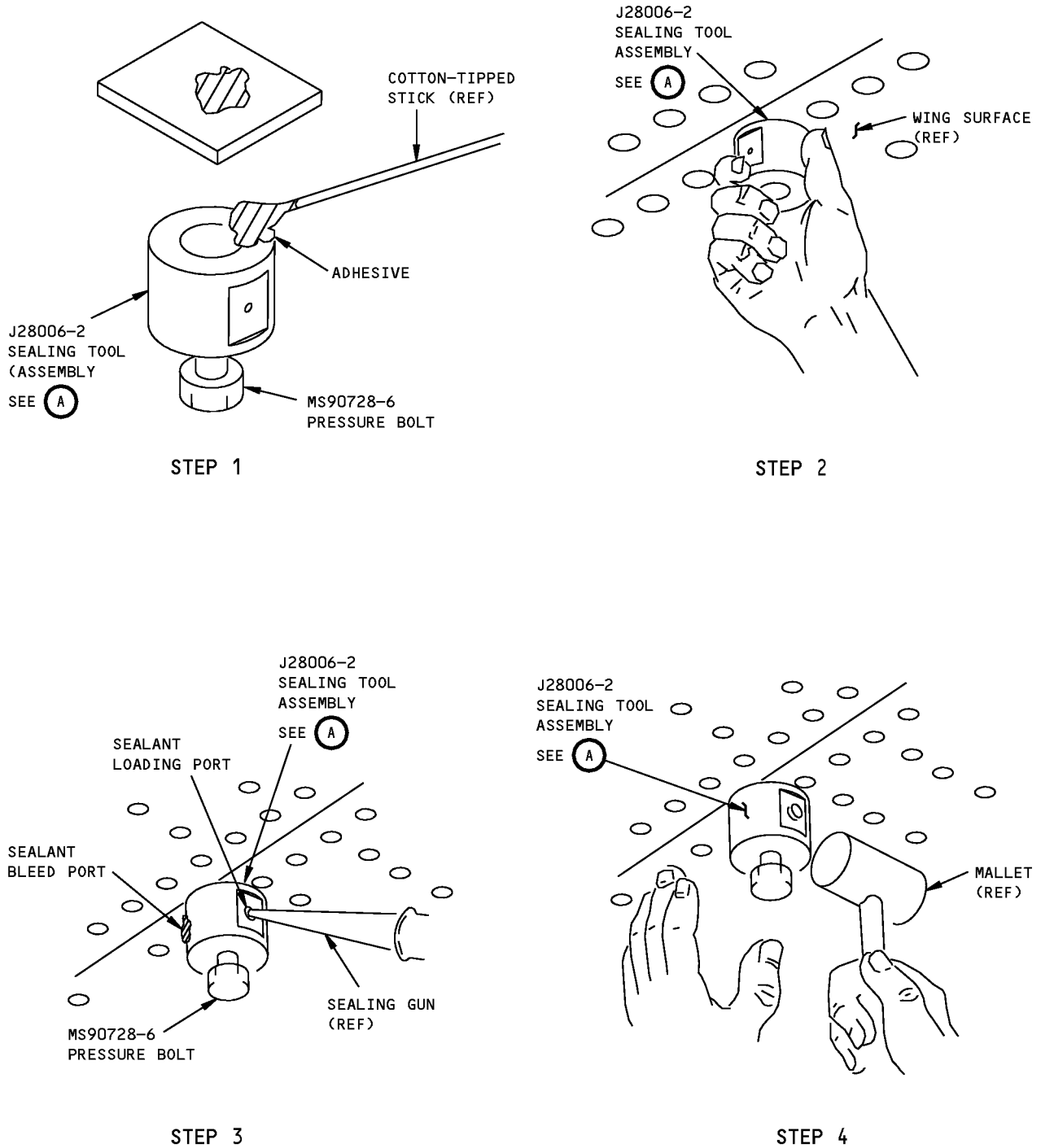
COMPONENT MAINTENANCE: NO

USAGE & DESCRIPTION: The J28006-1 sealing tool is used on all 757 airplanes. J28006 is used to apply sealant when making a temporary repair of integral fuel tank rivets. Refer to AMM 28-11-00 for complete usage instructions. J28006-1 consists of a J28006-2 sealing tool assembly contained in a storage box.

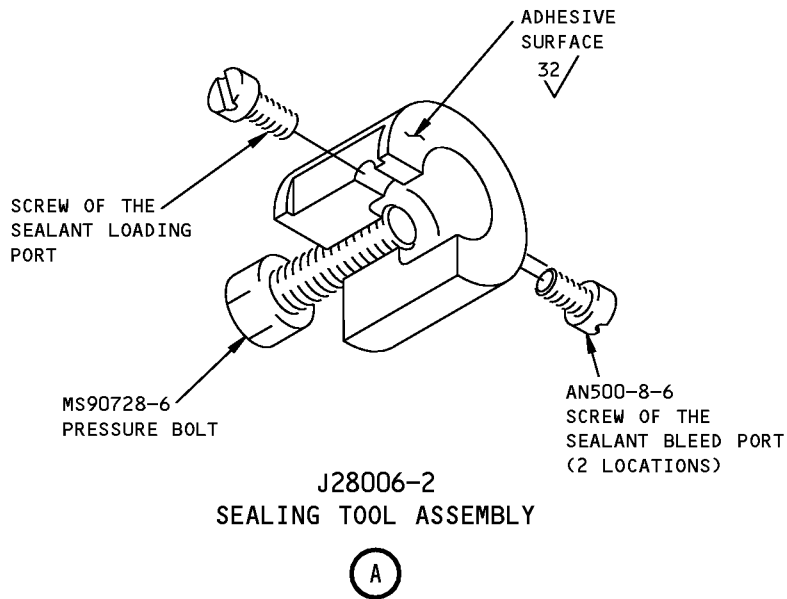
WEIGHT: 1 lb (0.45 kg)

DIMENSIONS: 1 x 2 x 2 inches (25 x 51 x 51 mm)

ILLUSTRATED TOOL AND EQUIPMENT MANUAL



**Fuel Tank Rivet Sealing Tool
Figure 1 (Sheet 1 of 2)**



**Fuel Tank Rivet Sealing Tool
Figure 1 (Sheet 2 of 2)**



757

ILLUSTRATED TOOL AND EQUIPMENT MANUAL

PART NUMBER: F72951-1

NAME: WATER MANOMETER - TEST EQUIPMENT

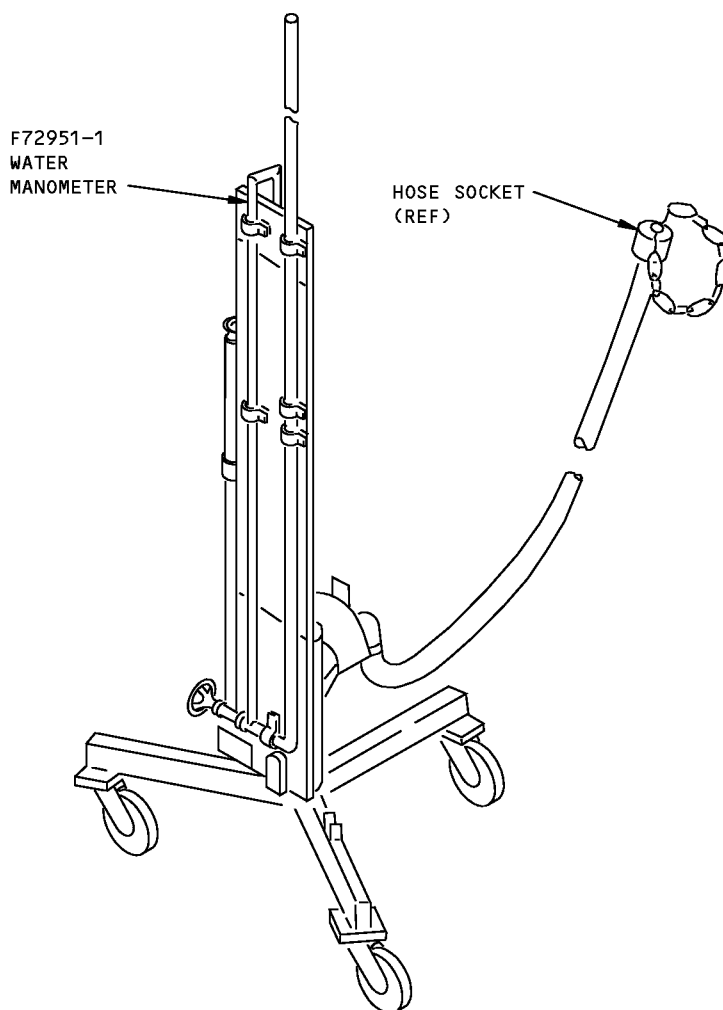
AIRPLANE MAINTENANCE: YES

COMPONENT MAINTENANCE: NO

USAGE & DESCRIPTION: The F72951-1 water manometer is used on all 757 airplanes. F72951 is used to provide pressure and vacuum relief protection during hydrostatic testing of certain pressure retaining components, structures and systems. During fuel system testing, F72951 should be used with the customer-furnished fuel system pressure plug equipment B28005-1. Refer to AMM 28-11-00 for complete usage instructions. F72951 consists of a manometer mounted on a caster equipped base. The 180-inch high F72951 manometer includes a removable tube assembly for reduced height. In addition, the F72951 can be pivoted 90° to a 104-inch height for easier transportability.

WEIGHT: 150 lbs (68 kg)

DIMENSIONS: 41 x 62 x 104 inches (1041 x 1575 x 2641 mm)



**Test Equipment Water Manometer
Figure 1**



757

ILLUSTRATED TOOL AND EQUIPMENT MANUAL

PART NUMBER: B28008-10

NAME: PRESSURIZATION EQUIPMENT - WING DRY BAY, FUEL LEAK DETECTION

AIRPLANE MAINTENANCE: YES

COMPONENT MAINTENANCE: NO

USAGE & DESCRIPTION: The B28008-10 pressurization equipment is used on all 757 airplanes. B28008 is used to pressurize the wing dry bay to check for fuel leaks through any two of the four 112N4004 flame arrestor fittings in the lower wing surface. The remaining two 112N4004 flame arrestor fittings are plugged with stopper assemblies. Refer to AMM 28-11-00 for complete usage information. B28008-10 consists of:

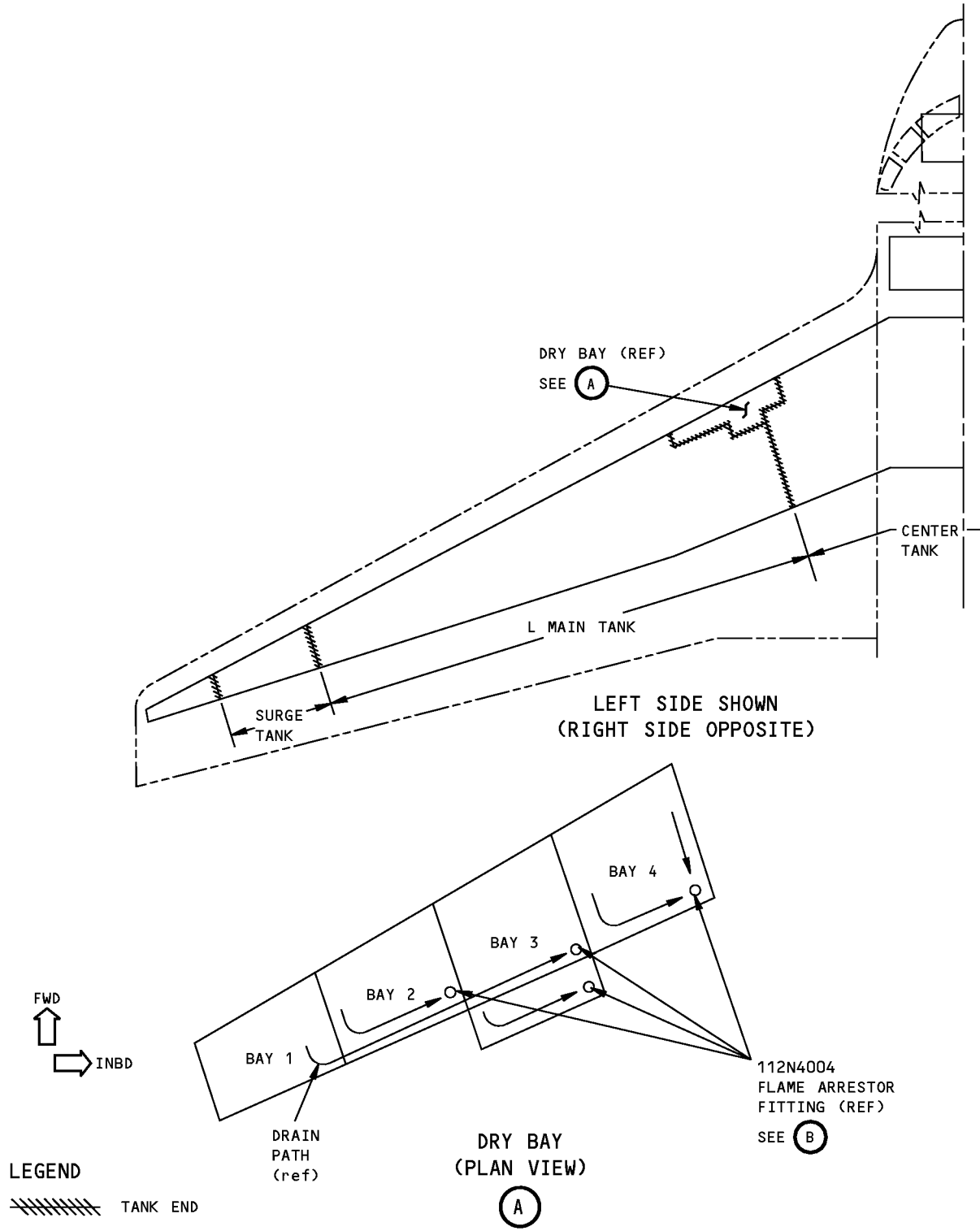
B28008-10		
QUANTITY	NOMENCLATURE	PART NUMBER
1	FILL TUBE ASSEMBLY	B28008-11
1	PRESSURE TUBE ASSEMBLY	B28008-12
2	STOPPER ASSEMBLY	B28008-3
1	STORAGE BOX	

WEIGHT: 8 lbs (3.6 kg)

DIMENSIONS: 12 x 14 x 22 inches (305 x 356 x 559 mm)

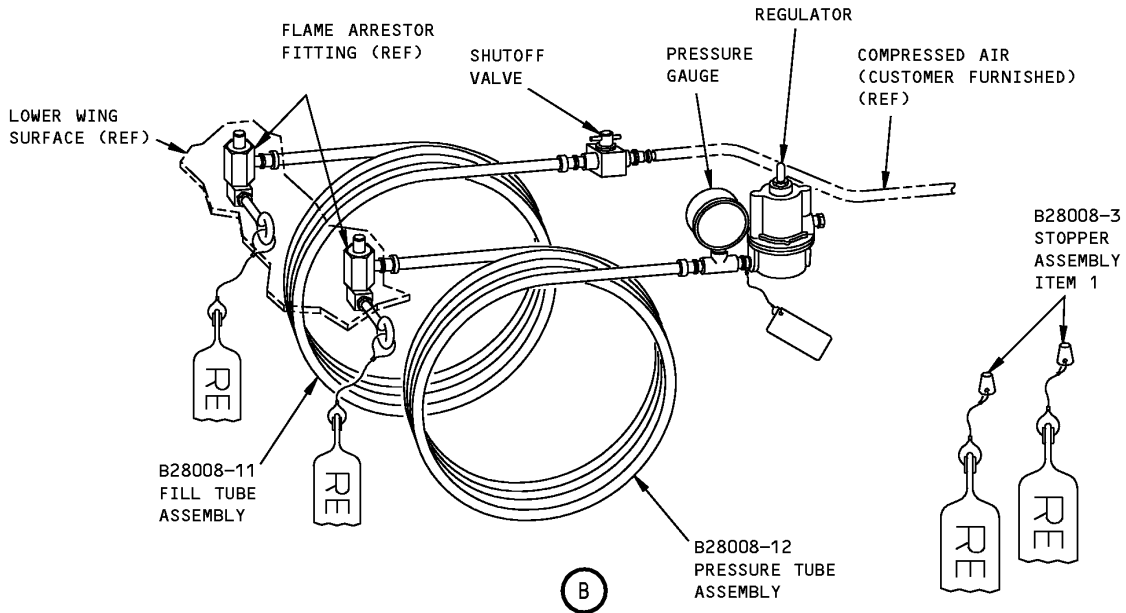
NOTE: B28008-10 supersedes B28008-1
J28007 replaces B28008 for future procurement.

**757
ILLUSTRATED TOOL AND EQUIPMENT MANUAL**



**Wing Dry Bay, Fuel Leak Detection Pressurization Equipment
Figure 1 (Sheet 1 of 2)**

ILLUSTRATED TOOL AND EQUIPMENT MANUAL



**Wing Dry Bay, Fuel Leak Detection Pressurization Equipment
Figure 1 (Sheet 2 of 2)**

REPAIRABLE/REPLACEABLE PARTS			
ITEM NO.	PART NO.	NOMENCLATURE	VENDOR CODE
1	B28008-3	STOPPER ASSEMBLY	



757

ILLUSTRATED TOOL AND EQUIPMENT MANUAL

PART NUMBER: G28005-14, -18, -23, -29, -35, -42,

NAME: CHECK FIXTURE EQUIPMENT - PRESSURE RELIEF VALVE

AIRPLANE MAINTENANCE: YES

COMPONENT MAINTENANCE: NO

USAGE & DESCRIPTION: G28005-14, -18, -23, -29, -35 or -42 (preferred) check fixture equipment are used on all 757 airplanes. G28005, together with a pressure source of 0 to + 1.50 psig and a vacuum source of 0 to -3.00 psig is used to check the actuating pressure of the wing surge tank pressure relief valve. The G28005-35 and G28005-42 check fixture equipment includes four G28005-39 pan head screws that are used only for 737-600 thru -900 maintenance applications. Refer to AMM 28-13-04 for complete usage instructions. G28005-14, -18, -23, -29, -35 and -42 consists of:

G28005-14		
QUANTITY	NOMENCLATURE	PART NUMBER
1	CHECK FIXTURE ASSEMBLY	G28005-15
4	SOCKET HEAD SCREW	MS16998-48
1	STORAGE BOX	

G28005-18		
QUANTITY	NOMENCLATURE	PART NUMBER
1	CHECK FIXTURE ASSEMBLY	G28005-19
4	SOCKET HEAD SCREW	MS16998-48
1	STORAGE BOX	

G28005-23		
QUANTITY	NOMENCLATURE	PART NUMBER
1	CHECK FIXTURE ASSEMBLY	G28005-24
4	SOCKET HEAD SCREW	MS16998-48
1	STORAGE BOX	

G28005-29		
QUANTITY	NOMENCLATURE	PART NUMBER
1	CHECK FIXTURE ASSEMBLY	G28005-30
4	SOCKET HEAD SCREW	MS16998-48
1	STORAGE BOX	

**757
ILLUSTRATED TOOL AND EQUIPMENT MANUAL**

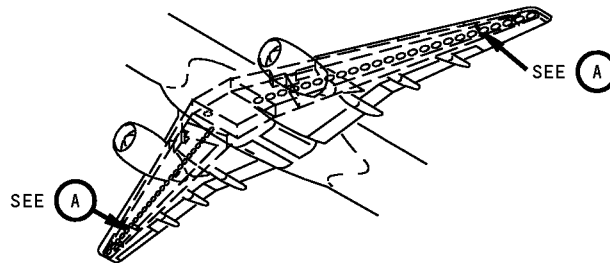
G28005-35		
QUANTITY	NOMENCLATURE	PART NUMBER
1	CHECK FIXTURE ASSEMBLY	G28005-36
4	PAN HEAD SCREW	G28005-39
4	SOCKET HEAD SCREW	MS16998-48
1	STORAGE BOX	

G28005-42		
QUANTITY	NOMENCLATURE	PART NUMBER
1	CHECK FIXTURE ASSEMBLY	G28005-43
4	PAN HEAD SCREW	G28005-39
4	SOCKET HEAD SCREW	MS16998-48
1	STORAGE BOX	

WEIGHT: 10 lbs (4.5 kg)

DIMENSIONS: 5 x 13 X 13 inches (127 x 330 x 330 mm)

NOTE: G28005-42 replaces G28005-14, -18, -23, -29 and -35 for future procurement.
G28005 replaces A28004 for future procurement.

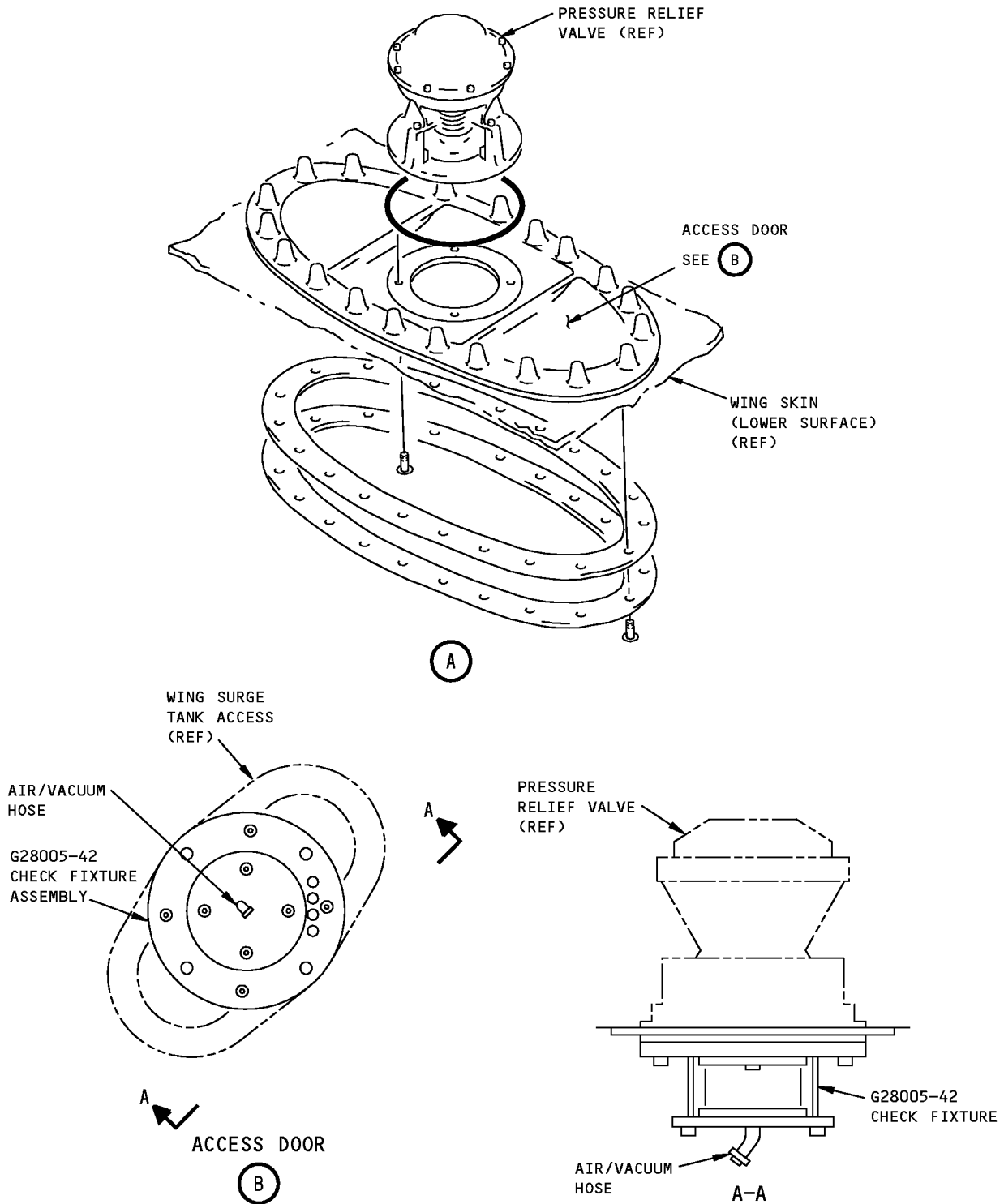


PRESSURE RELIEF VALVE CHECK FIXTURE EQUIPMENT

L90992 S0000217078_V2

**Pressure Relief Valve Check Fixture Equipment
Figure 1 (Sheet 1 of 2)**

ILLUSTRATED TOOL AND EQUIPMENT MANUAL



D68860 S0000217079_V2

**Pressure Relief Valve Check Fixture Equipment
Figure 1 (Sheet 2 of 2)**



757

ILLUSTRATED TOOL AND EQUIPMENT MANUAL

PART NUMBER: J28010-1

NAME: CONSOLE - SHOP AIR SUPPLY

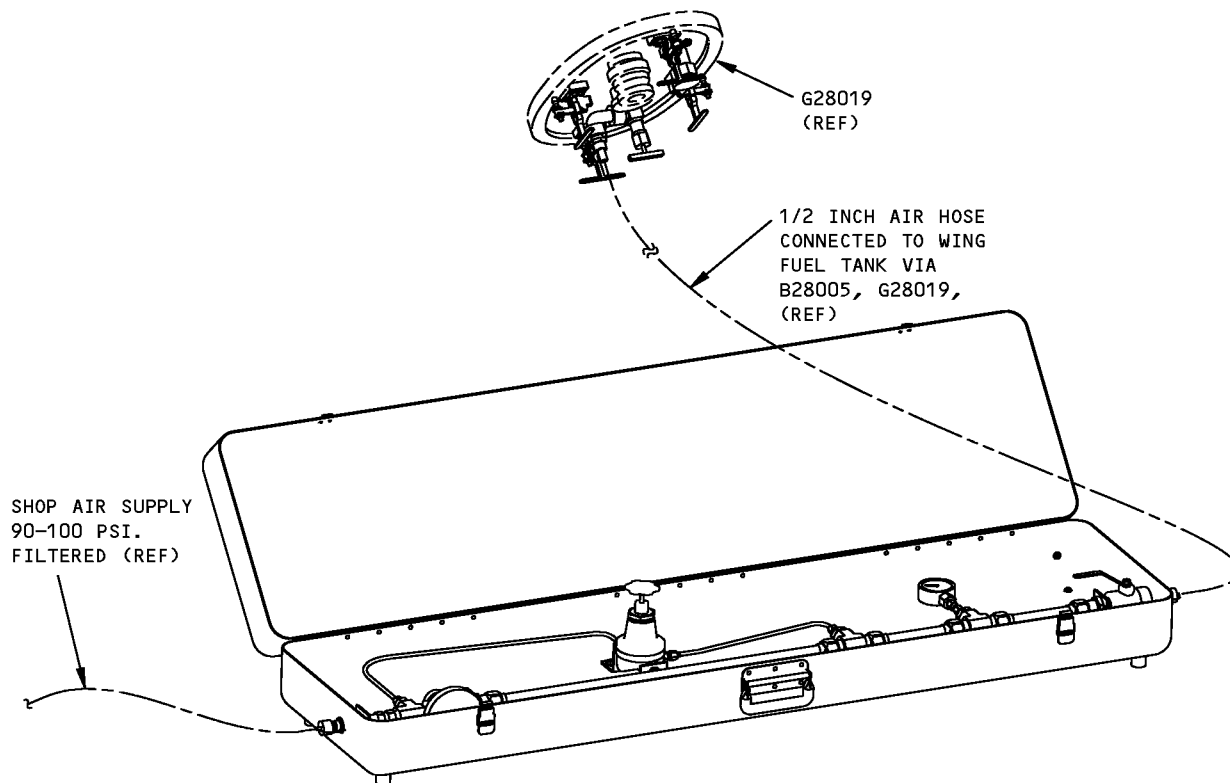
AIRPLANE MAINTENANCE: YES

COMPONENT MAINTENANCE: NO

USAGE & DESCRIPTION: The J28010-1 console is used on all 757 airplanes. J28010 is used to perform fuel tank leak inspections. J28010 is used in conjunction with pressure test doors. Refer to the current J28010 drawing, AMM 28-11-00 and AMM 28-21-00 for complete usage information. J28010-1 consists of a pressure gauge, two regulators, plumbing and a J28010-2 box assembly.

WEIGHT: 22 lbs (10 kg)

DIMENSIONS: 10 x 18 x 66 inches (254 x 457 x 1676 mm)



**Shop Air Supply Console
Figure 1**



757

ILLUSTRATED TOOL AND EQUIPMENT MANUAL

PART NUMBER: J28007-1, -9, -10,

NAME: PRESSURIZATION EQUIPMENT - WING DRY BAY, FUEL LEAK DETECTION

AIRPLANE MAINTENANCE: YES

COMPONENT MAINTENANCE: NO

USAGE & DESCRIPTION: The J28007-1 or J28007-9 and -10 (preferred) pressurization equipment is used on all 757 airplanes, 747 airplanes, 767 airplanes, 777 airplanes and 787 airplanes. J28007 is used to pressurize the wing dry bay for a fuel leak check. J28007 is used to pressurize one 112N4004 flame arrestor fitting in the lower wing surface by plugging the other three 112N4004 flame arrestor fittings. Refer to AMM 28-11-00 for complete usage instructions.

J28007-1 consists of:

J28007-1		
QUANTITY	NOMENCLATURE	PART NUMBER
1	TUBE ASSEMBLY	J28007-2
3	STOPPER ASSEMBLY	J28007-3
1	STORAGE BOX	

J28007-9 and -10 consists of:

J28007-9		
QUANTITY	NOMENCLATURE	PART NUMBER
3	STOPPER ASSEMBLY	J28007-3
1	HOSE ASSEMBLY	J28007-12
1	STORAGE BOX	

J28007-10		
QUANTITY	NOMENCLATURE	PART NUMBER
1	CONNECTOR ASSEMBLY	J28007-13
1	STORAGE BOX	

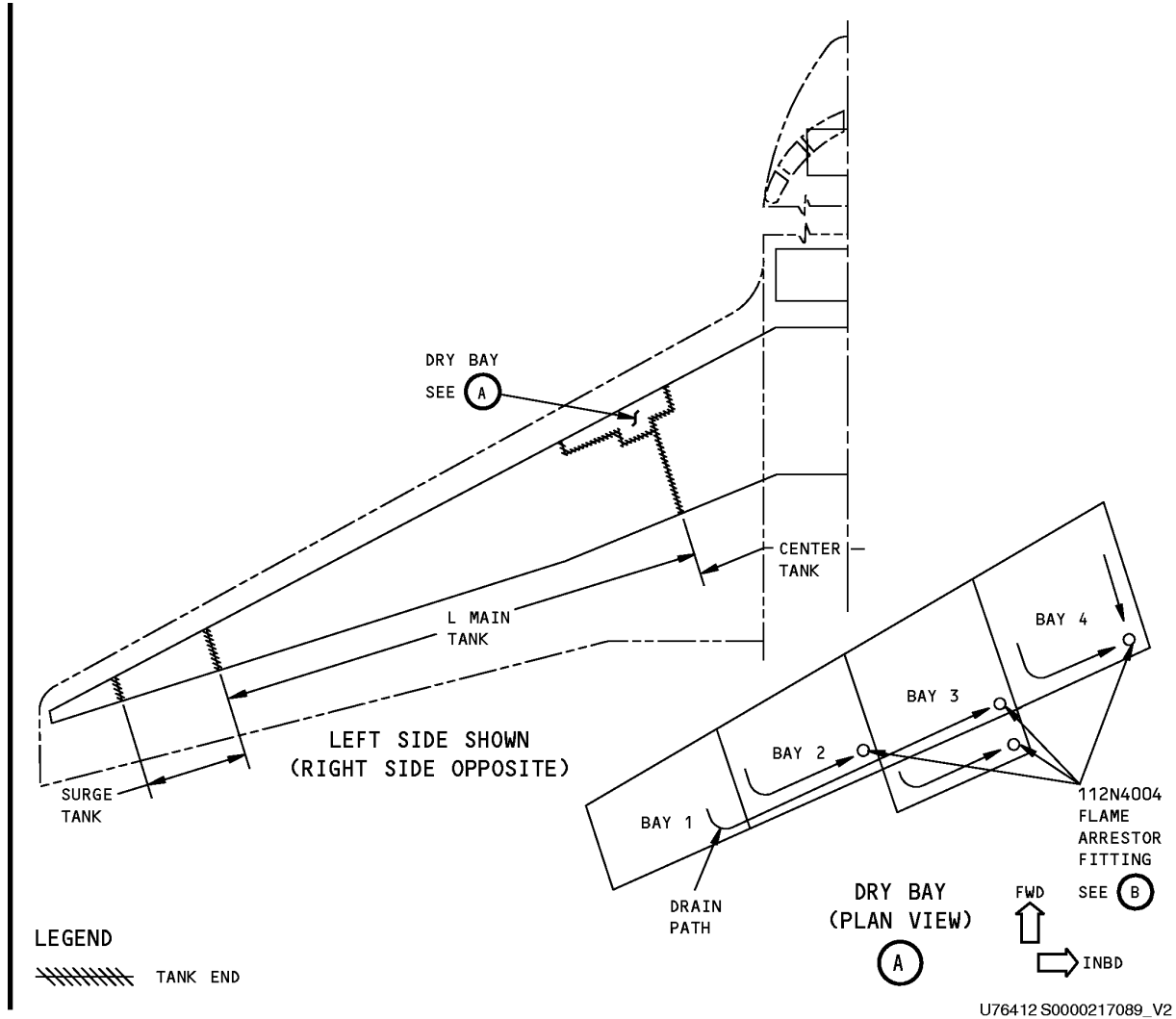
WEIGHT: J28007-1 - 10 lbs (4.5 kg)
J28007-9 - 10 lbs (4.5 kg)
J28007-10 - 1 lbs (0.4 kg)

DIMENSIONS: J28007-1 - 12 x 14 x 22 inches (305 x 356 x 559 mm)
J28007-9 - 12 x 14 x 22 inches (305 x 356 x 559 mm)
J28007-10 - 5 x 8 x 10 inches (127 x 203 x 254 mm)

ILLUSTRATED TOOL AND EQUIPMENT MANUAL

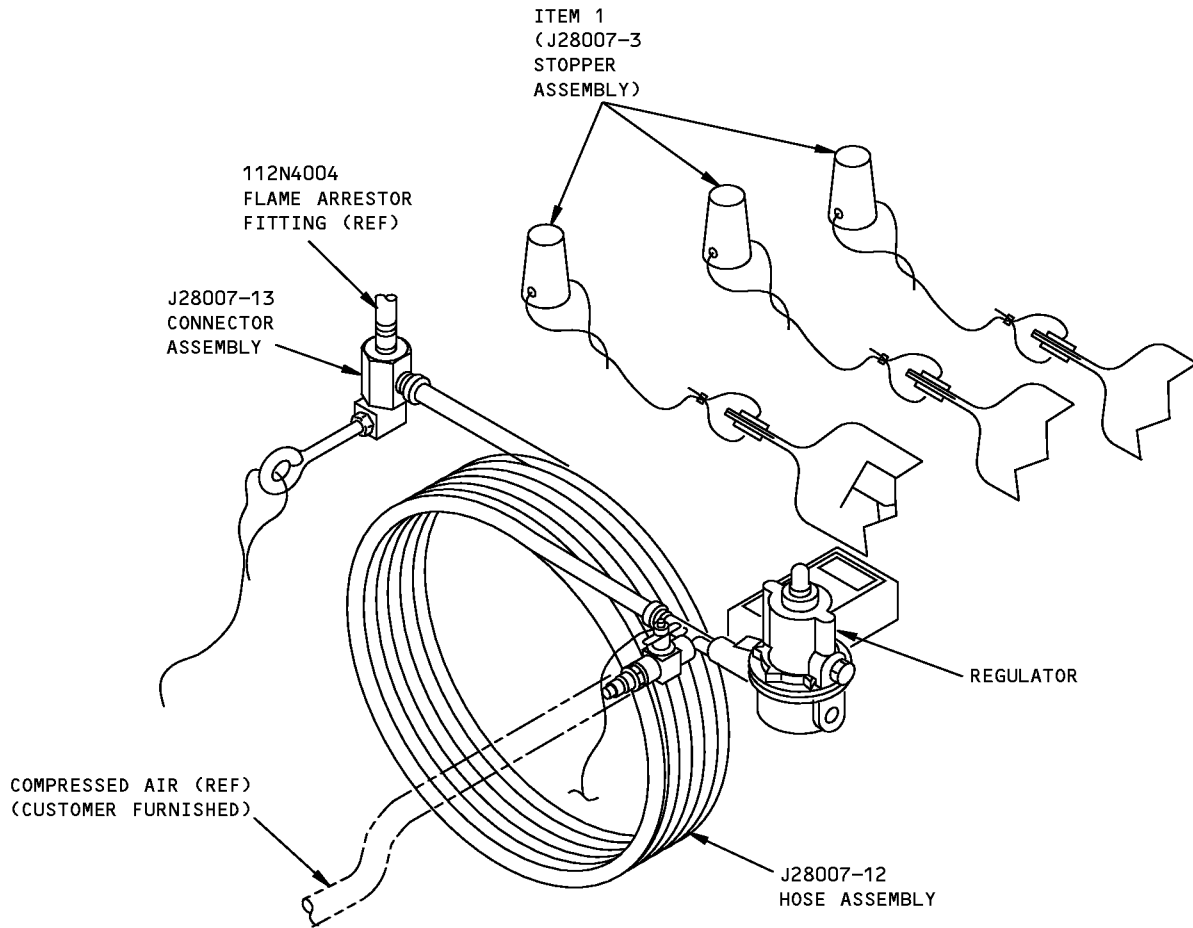
NOTE:

J28007-1 replaces B28008-10 for future procurement.
 J28007-9 and J28007-10 replaces J28007-1 for future procurement.



**Fuel Leak Detection Wing Dry Bay Pressurization Equipment
 Figure 1 (Sheet 1 of 2)**

ILLUSTRATED TOOL AND EQUIPMENT MANUAL



J28007-9 AND -10
PRESSURIZATION EQUIPMENT SHOWN
J28007-1 SIMILAR

(B)

467608 S0000217090_V2

**Fuel Leak Detection Wing Dry Bay Pressurization Equipment
Figure 1 (Sheet 2 of 2)**



757

ILLUSTRATED TOOL AND EQUIPMENT MANUAL

REPAIRABLE/REPLACEABLE PARTS			
ITEM NO.	PART NO.	NOMENCLATURE	VENDOR CODE
1	J28007-3	STOPPER ASSEMBLY	



757

ILLUSTRATED TOOL AND EQUIPMENT MANUAL

PART NUMBER: B28010-1, -2

NAME: WRENCH KIT - AUXILIARY FUEL TANK

AIRPLANE MAINTENANCE: YES

COMPONENT MAINTENANCE: NO

USAGE & DESCRIPTION: B28010-1 wrench kit is used on 757-200, line number NP904 only.
B28010-2 wrench kit is used on 757-200, line numbers NP901 thru NP903 only.
B28010 wrench kits are used to install and remove the forward or aft auxiliary fuel tank. Refer to AMM 28-14-11 and the current B28010 drawing for complete usage instructions.

B28010-1 and -2 consist of:

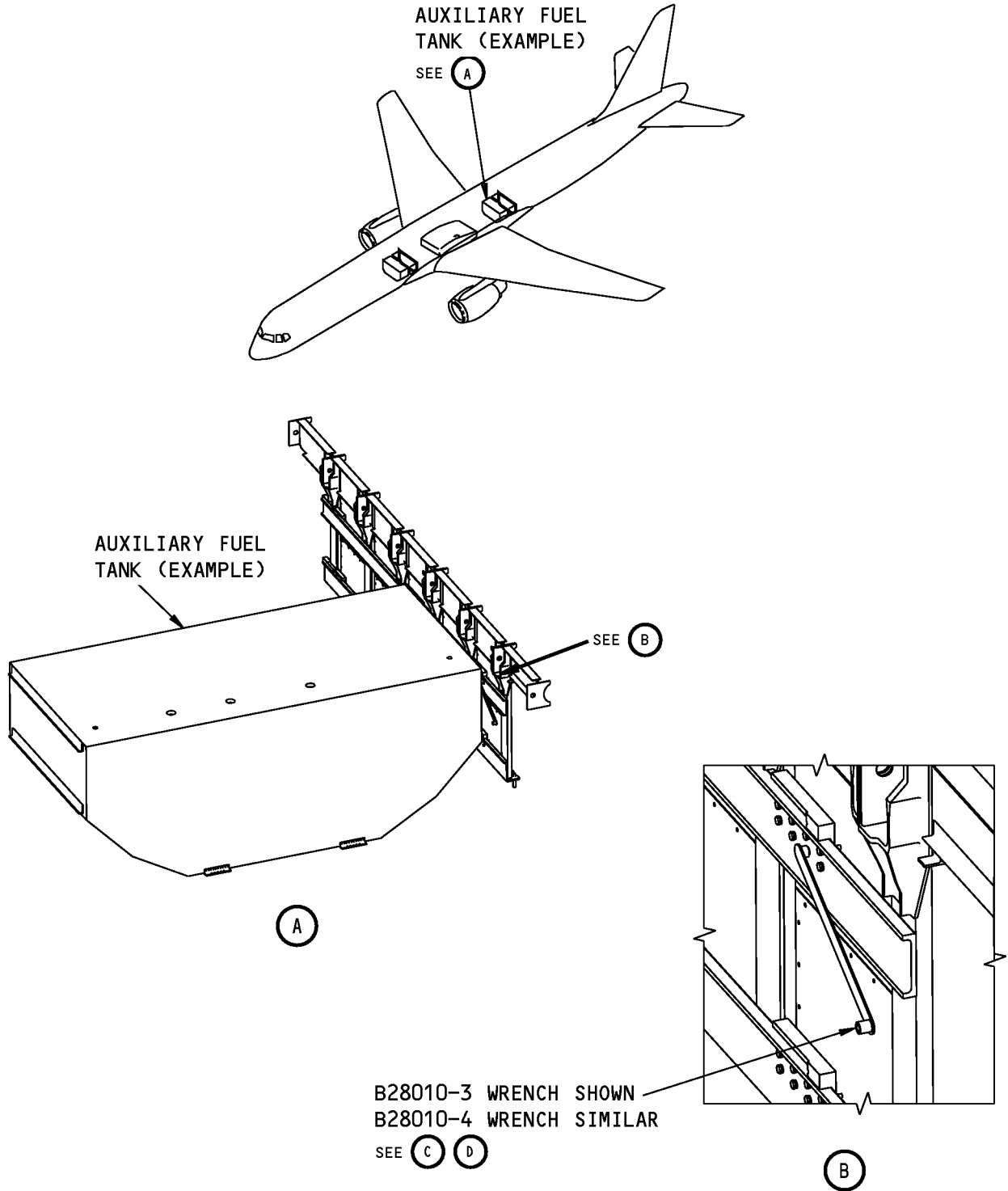
B28010-1		
QUANTITY	NOMENCLATURE	PART NUMBER
1	7/16-INCH WRENCH	B28010-3
1	STORAGE BOX	

B28010-2		
QUANTITY	NOMENCLATURE	PART NUMBER
1	7/16-INCH WRENCH	B28010-3
1	5/16-INCH WRENCH	B28010-4
1	STORAGE BOX	

WEIGHT: B28010-1 - 1 lb (0.5 kg)
B28010-2 - 2 lb (1 kg)

DIMENSIONS: 1 x 2 x 13 inches (25 x 51 x 330 mm)

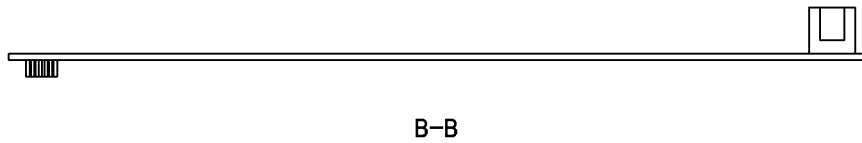
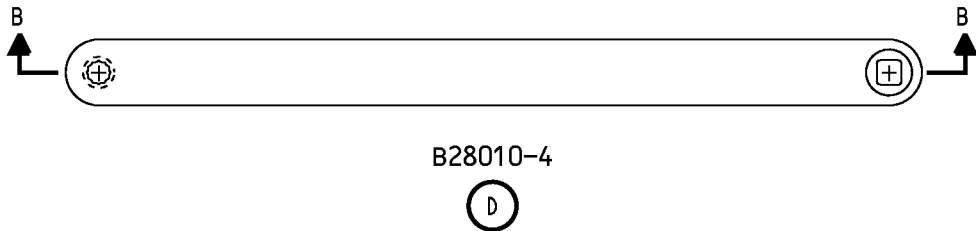
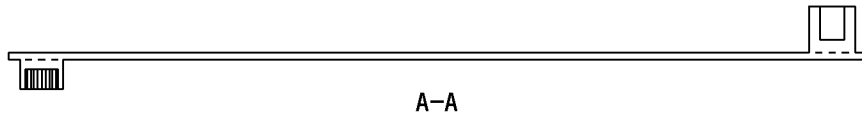
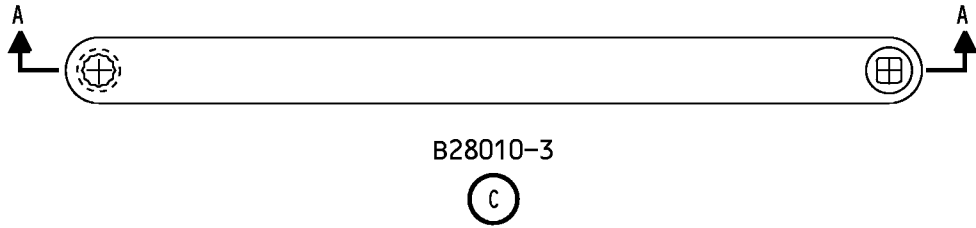
ILLUSTRATED TOOL AND EQUIPMENT MANUAL



1651235 S0000302908_V1

**Auxiliary Fuel Tank Wrench Kit
Figure 1 (Sheet 1 of 2)**

757
ILLUSTRATED TOOL AND EQUIPMENT MANUAL



1651243 S0000302924_V1

Auxiliary Fuel Tank Wrench Kit
Figure 1 (Sheet 2 of 2)



757

ILLUSTRATED TOOL AND EQUIPMENT MANUAL

PART NUMBER: B28001-1

NAME: ADAPTER - SUMP DRAIN VALVE, REMOVAL/INSTALLATION

AIRPLANE MAINTENANCE: YES

COMPONENT MAINTENANCE: NO

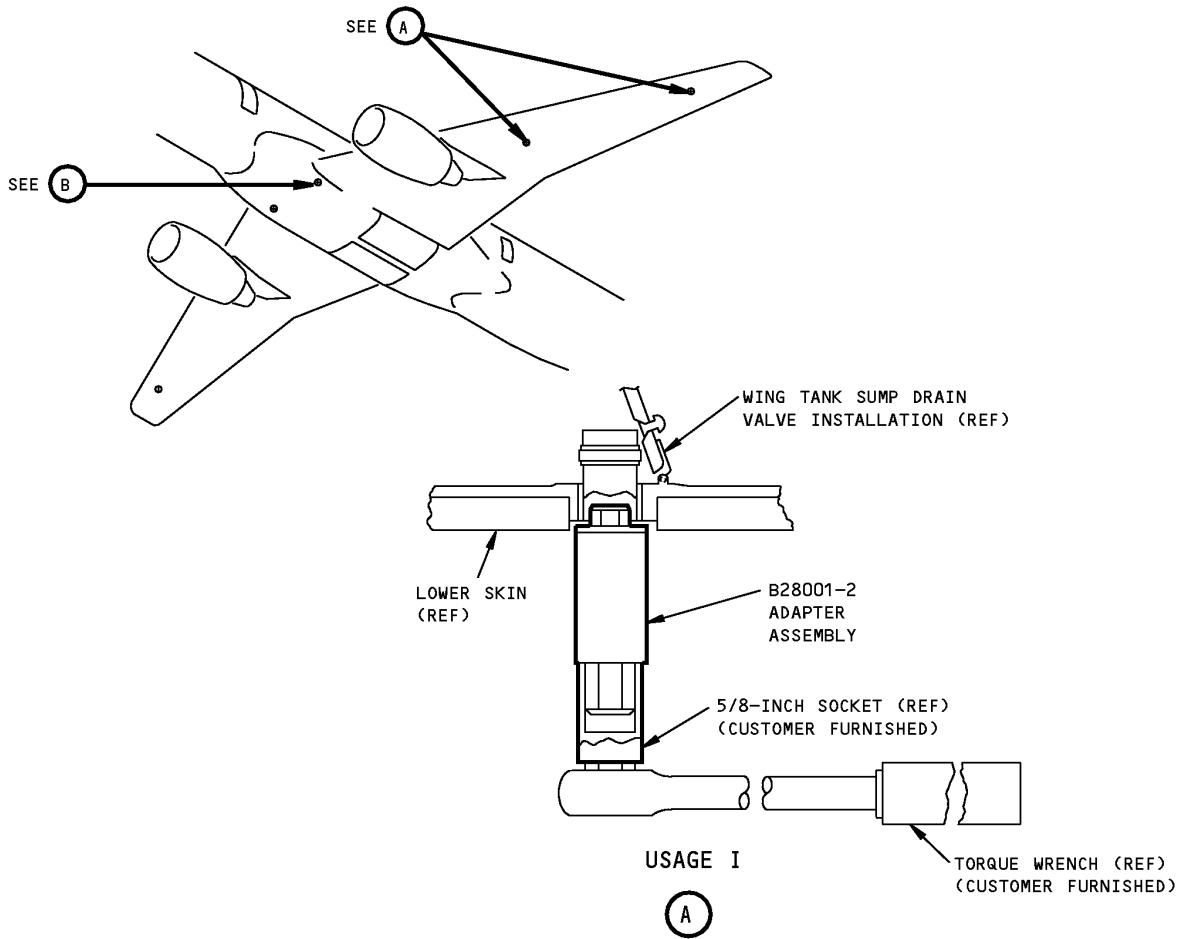
USAGE & DESCRIPTION: The B28001-1 adapter is used on all 757 airplanes. B28001 is used to remove or install the primary sump drain valves from the fuel tanks. B28001 is used with customer-furnished torque wrenches and extension bars to gain access to the wing and center tank drain valves. Refer to AMM 12-11-03 and AMM 28-11-05 for complete usage instructions. B28001-1 consists of:

B28001-1		
QUANTITY	NOMENCLATURE	PART NUMBER
1	ADAPTER ASSEMBLY	B28001-2
1	ADAPTER	B28001-5
1	STORAGE BOX	

WEIGHT: 2 lbs (0.9 kg)

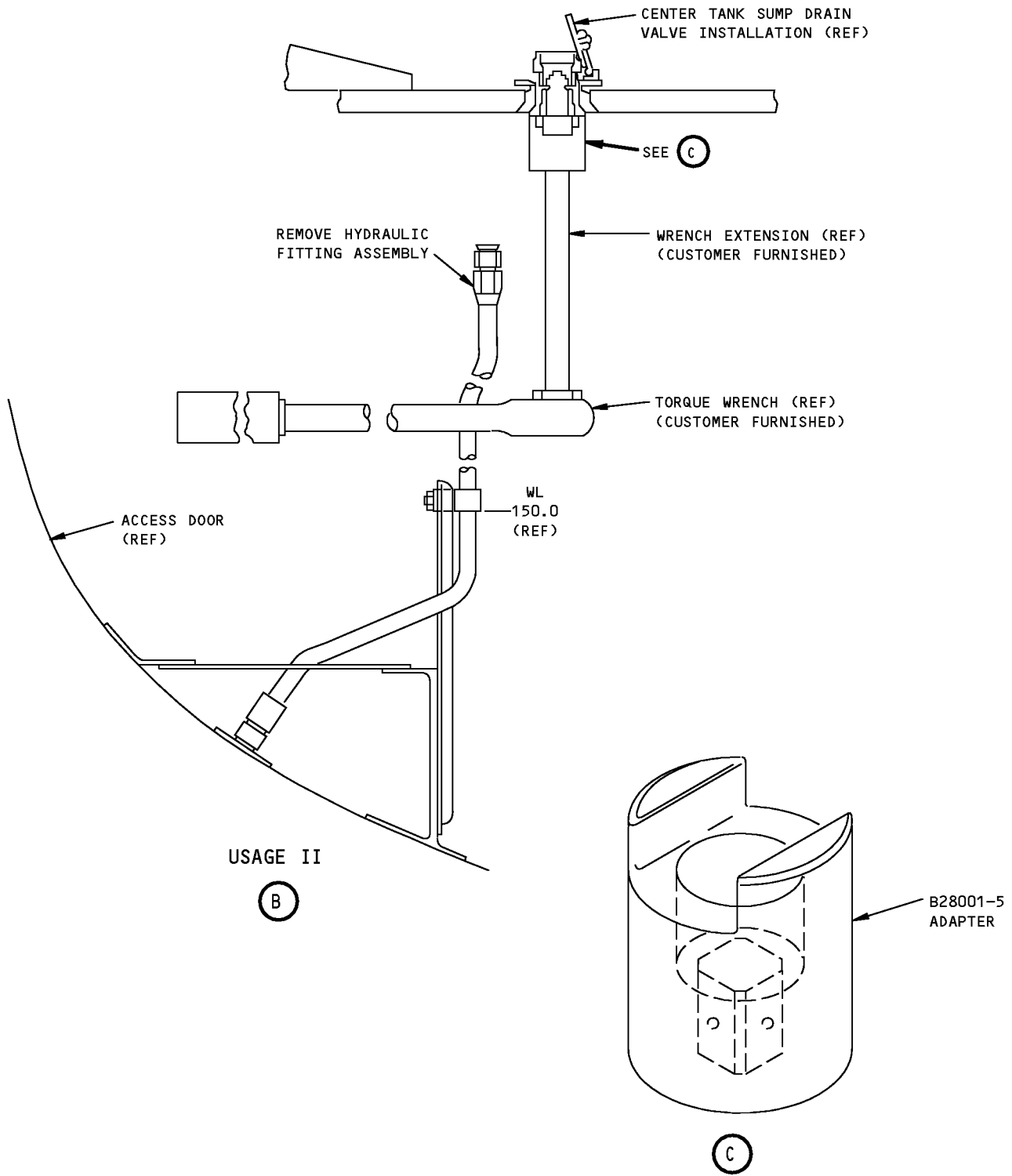
DIMENSIONS: 2 x 9 x 12 inches (51 x 229 x 305 mm)

757
ILLUSTRATED TOOL AND EQUIPMENT MANUAL



B28001-1 adapter
Figure 1 (Sheet 1 of 2)

ILLUSTRATED TOOL AND EQUIPMENT MANUAL



B28001-1 adapter
Figure 1 (Sheet 2 of 2)



757

ILLUSTRATED TOOL AND EQUIPMENT MANUAL

PART NUMBER: B28003-1

NAME: PULLER - MAIN TANK BOOST PUMP ASSEMBLY

AIRPLANE MAINTENANCE: YES

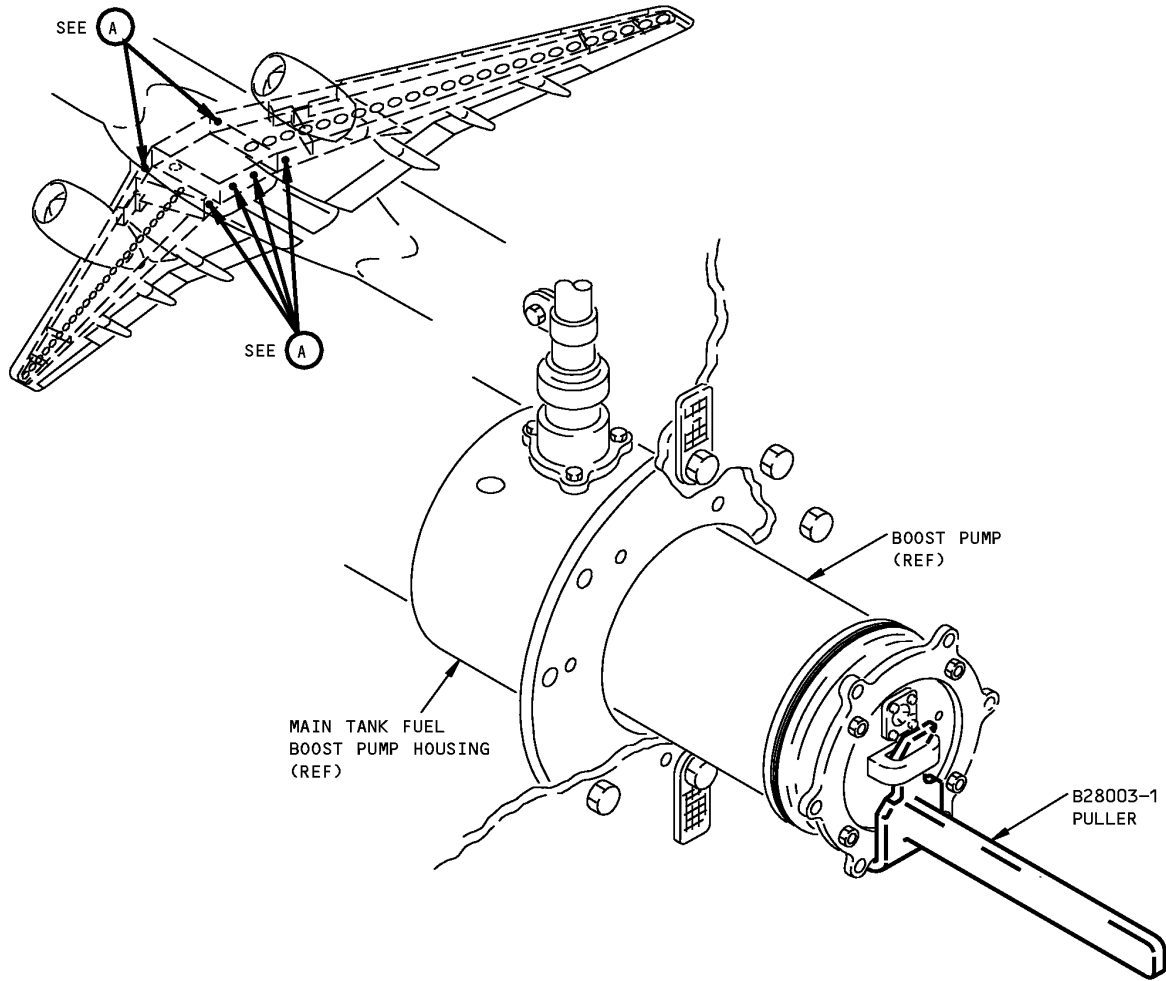
COMPONENT MAINTENANCE: NO

USAGE & DESCRIPTION: The B28003-1 puller is used on all 757 airplanes. B28003 is used in removing the 60B92404 and 343N3301 fuel boost pumps. Refer to AMM 28-22-03 for complete usage instructions. B28003-1 consists of a weldment of a B28003-2 handle and B28003-3 head.

WEIGHT: 1 lb (0.45 kg)

DIMENSIONS: 3 x 3 x 11 inches (76 x 76 x 279 mm)

**757
ILLUSTRATED TOOL AND EQUIPMENT MANUAL**



**Main Tank Boost Pump Assembly Puller
Figure 1**



757

ILLUSTRATED TOOL AND EQUIPMENT MANUAL

PART NUMBER: B28009-1

NAME: ALIGNMENT EQUIPMENT - FUEL SHUTOFF VALVE

AIRPLANE MAINTENANCE: YES

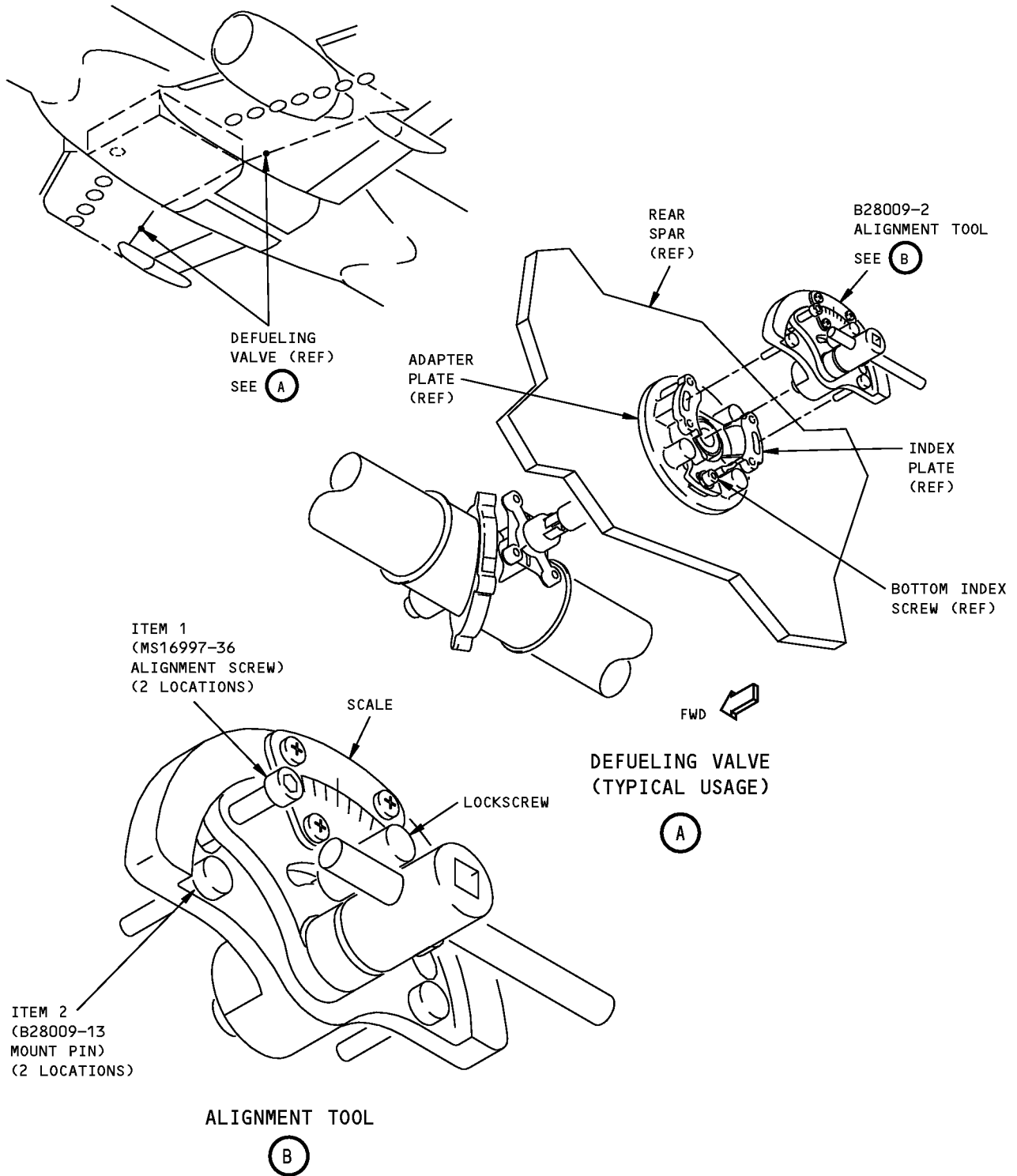
COMPONENT MAINTENANCE: NO

USAGE & DESCRIPTION: The B28009-1 alignment equipment is used on all 757 airplanes. B28009 is used to install and align the actuator with the valve body and adapter shaft of the S343T003 and 60B92406 fuel shutoff valves without entering the fuel tank. Refer to AMM 28-22-01, 28-22-02, and 28-26-01 for complete usage instructions.

WEIGHT: 1 lb (0.45 kg)

DIMENSIONS: 3 x 3 x 4 inches (76 x 76 x 102 mm)

ILLUSTRATED TOOL AND EQUIPMENT MANUAL



**Fuel Shutoff Valve Alignment Equipment
Figure 1**



757

ILLUSTRATED TOOL AND EQUIPMENT MANUAL

REPAIRABLE/REPLACEABLE PARTS			
ITEM NO.	PART NO.	NOMENCLATURE	VENDOR CODE
1	MS16997-36	ALIGNMENT SCREW	
2	B28009-13	MOUNT PIN	



757

ILLUSTRATED TOOL AND EQUIPMENT MANUAL

PART NUMBER: A28006-2

NAME: TEST BOX - FUEL LEVEL SENSORS, SURGE TANK

AIRPLANE MAINTENANCE: YES

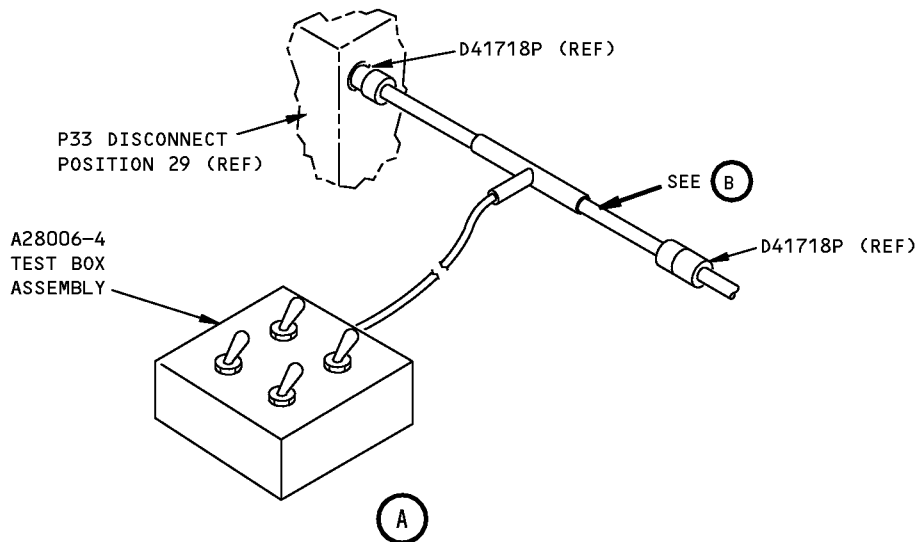
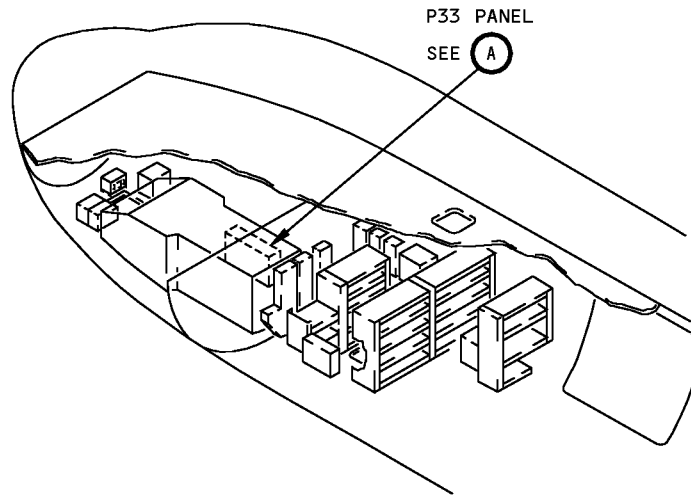
COMPONENT MAINTENANCE: NO

USAGE & DESCRIPTION: The A28006-2 test box is used on all 757 airplanes. A28006 is used to test the surge tank fuel level sensors during test of the pressure fueling system. Refer to AMM 28-21-00 for complete usage instructions. A28006-2 consist of a A28006-4 test box assembly contained in a storage box.

WEIGHT: 3 lbs (1.4 kg)

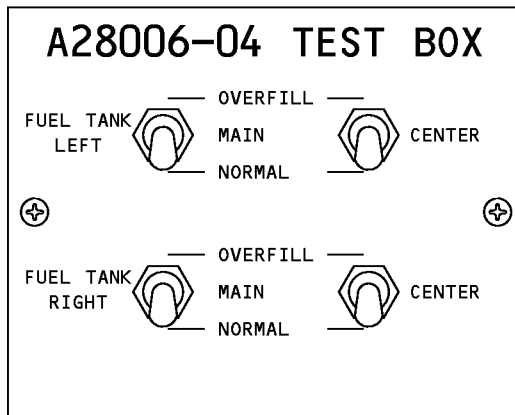
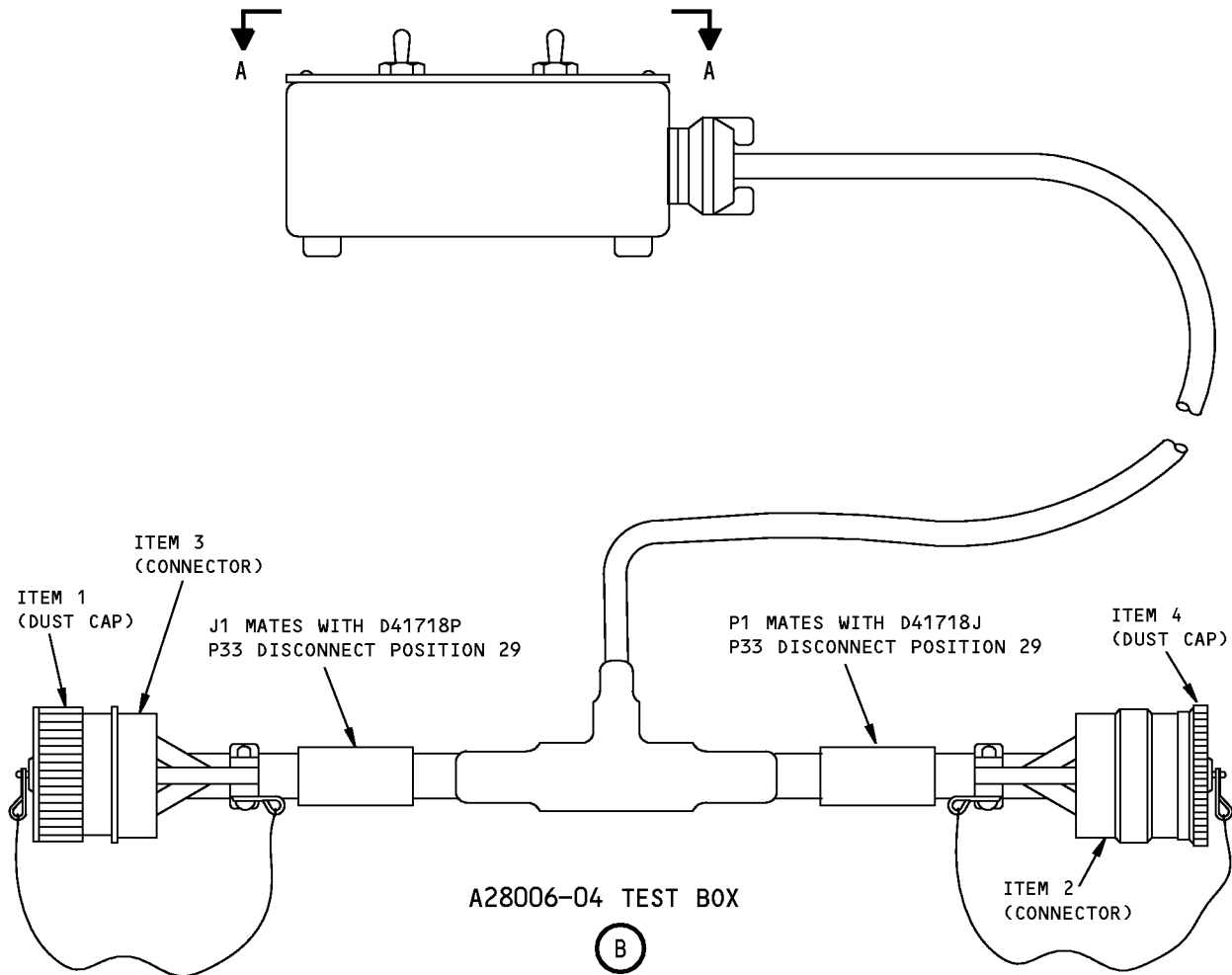
DIMENSIONS: 6 x 8 x 14 inches (152 x 203 x 356 mm)

757
ILLUSTRATED TOOL AND EQUIPMENT MANUAL



Surge Tank Fuel Level Sensors Test Box
Figure 1 (Sheet 1 of 2)

ILLUSTRATED TOOL AND EQUIPMENT MANUAL



A-A

**Surge Tank Fuel Level Sensors Test Box
Figure 1 (Sheet 2 of 2)**



757

ILLUSTRATED TOOL AND EQUIPMENT MANUAL

REPAIRABLE/REPLACEABLE PARTS			
ITEM NO.	PART NO.	NOMENCLATURE	VENDOR CODE
1	M83723/60-222AC	DUST CAP	
2	M83723/71A22559	CONNECTOR	
3	M83723/76A22559	CONNECTOR	
4	M83723/59-222AC	DUST CAP	



757

ILLUSTRATED TOOL AND EQUIPMENT MANUAL

PART NUMBER: B28007-1, -2

NAME: PRESSURE TEST ADAPTERS - ENGINE FUEL FEED

AIRPLANE MAINTENANCE: YES

COMPONENT MAINTENANCE: NO

USAGE & DESCRIPTION: The B28007-1 pressure test adapter is used on 757 airplanes equipped with Pratt and Whitney PW2000 engines. The B28007-2 pressure test adapter is used on 757 airplanes equipped with Rolls Royce RB211 engines.

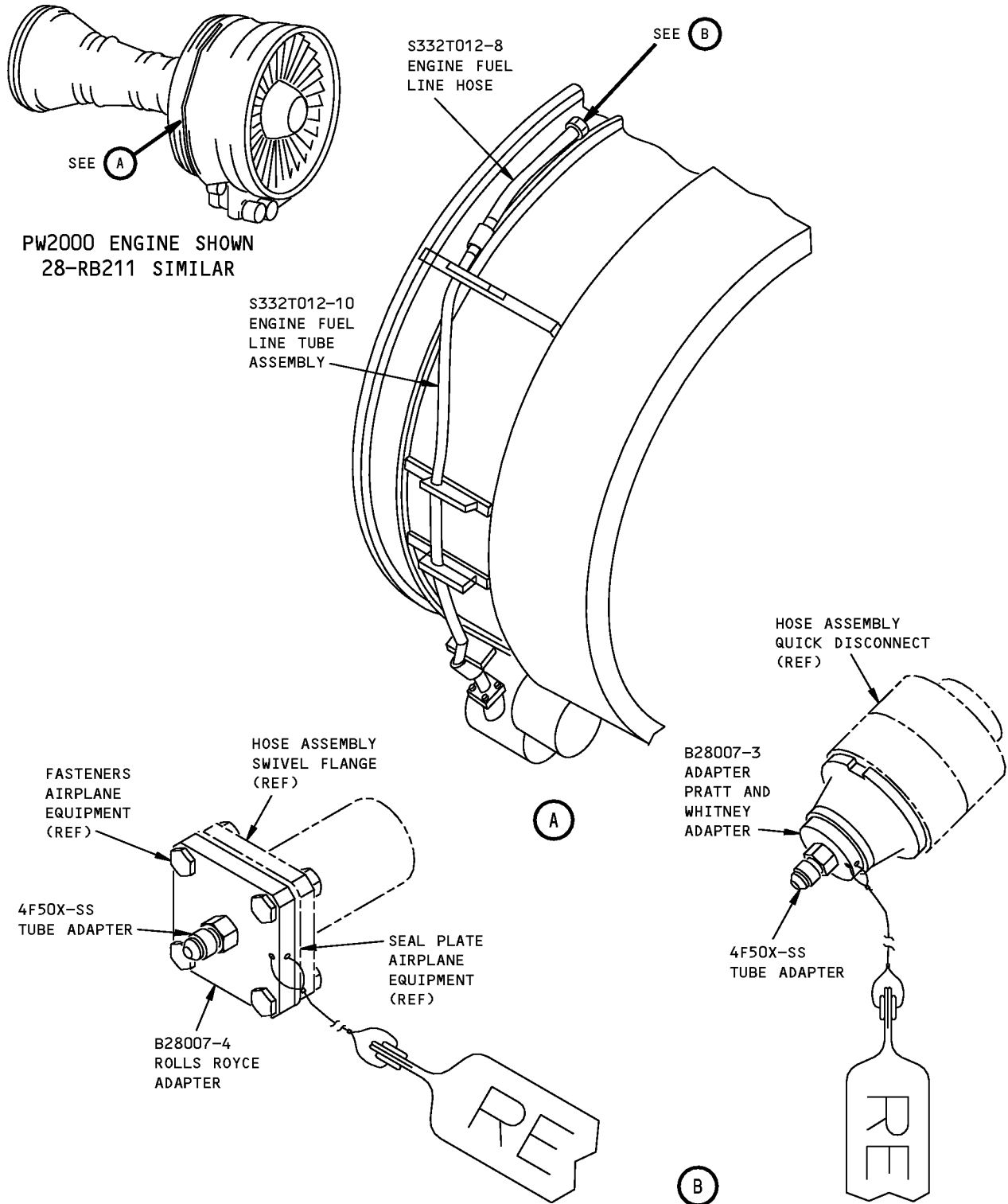
B28007-1 or -2 is used to pressure test the engine fuel feed manifold. Refer to the current B28007 drawing and AMM 28-22-07 for complete usage instructions.

B28007-1 consists of a B28007-3 Pratt and Whitney adapter contained in a storage box. B28007-2 consists of a B28007-4 Rolls Royce adapter contained in a storage box.

WEIGHT: 1 lb (0.45 kg)

DIMENSIONS: B28007-1 - 3 x 3 x 3 inches (76 x 76 x 76 mm)
B28007-2 - 2 x 3 x 3 inches (51 x 76 x 76 mm)

ILLUSTRATED TOOL AND EQUIPMENT MANUAL



**Engine Fuel Feed Pressure Test Adapters
Figure 1**



757

ILLUSTRATED TOOL AND EQUIPMENT MANUAL

PART NUMBER: A28005-42, -50, -53

NAME: TEST EQUIPMENT - LEAK AND PRESSURE, AUXILIARY POWER UNIT (APU)
FUEL LINE SHROUD

AIRPLANE MAINTENANCE: YES

COMPONENT MAINTENANCE: NO

USAGE & DESCRIPTION: A28005 test equipment is used to check pressure and leakage in the auxiliary power unit (APU) fuel line shroud. A combination of a "test hose assembly" (either A28005-42 or -50) and the A28005-53 "757 adapter assembly" are used.

The A28005-42 "test hose assembly" (acceptable option) and the A28005-53 "757 adapter assembly" are used on all 757 airplanes.

The A28005-50 "test hose assembly" (preferred) and the A28005-53 "757 adapter assembly" are used on all 757 airplanes.

A28005-50 test hose (preferred) along with the A28005-53 757 adapter assembly are attached to the APU fuel drain mast, pressurized, then watched for a timed drop in pressure. Refer to AMM 28-25-00 for complete usage instructions. A28005-42, -50 and -53 consist of:

A28005-42 TEST HOSE		
QUANTITY	NOMENCLATURE	PART NUMBER
1	HOSE ASSEMBLY	A28005-38
1	STORAGE BOX	

A28005-50 TEST HOSE		
QUANTITY	NOMENCLATURE	PART NUMBER
1	HOSE ASSEMBLY	A28005-51
1	STORAGE BOX	

A28005-53, 757 ADAPTER ASSEMBLY		
QUANTITY	NOMENCLATURE	PART NUMBER
1	HOSE	A28005-5
2	FERRULE	1893-4
1	COUPLER	B20-3B
1	SWIVEL CONNECTOR	6F6X
1	FITTING	H12GHBL-4-4
1	45 DEGREE ELBOW	8362165986

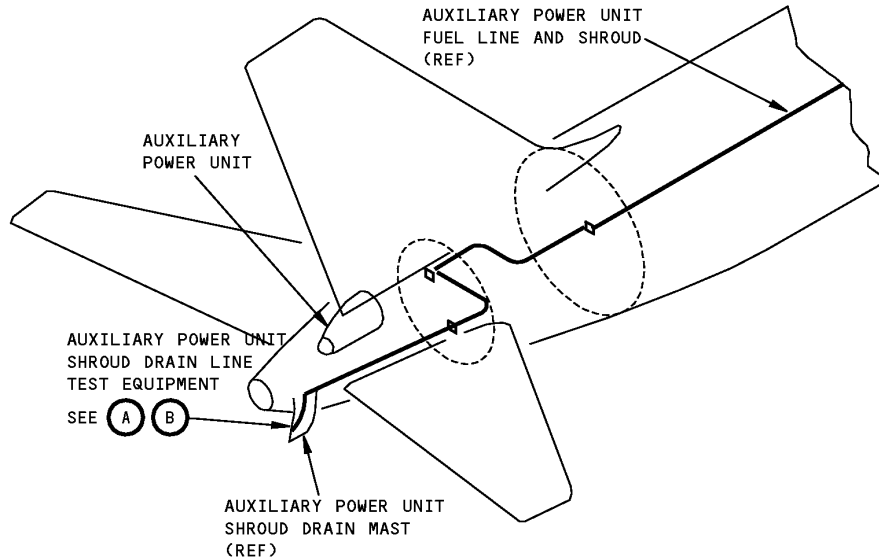
757
ILLUSTRATED TOOL AND EQUIPMENT MANUAL

A28005-53, 757 ADAPTER ASSEMBLY		
QUANTITY	NOMENCLATURE	PART NUMBER
1	MARKER	A28005-55

WEIGHT:
 A28005-42 test hose - 4 lbs (1.8 kg)
 A28005-50 test hose - 4 lbs (1.8 kg)
 A28005-53 757 adapter assembly - 2 lbs (0.9 kg)

DIMENSIONS:
 A28005-42 test hose - 6 x 6 x 14 inches (152 x 152 x 356 mm)
 A28005-50 test hose - 6 x 6 x 14 inches (152 x 152 x 356 mm)
 A28005-53 757 adapter assembly - 1 x 1 x 14 inches (25 x 25 x 356 mm)

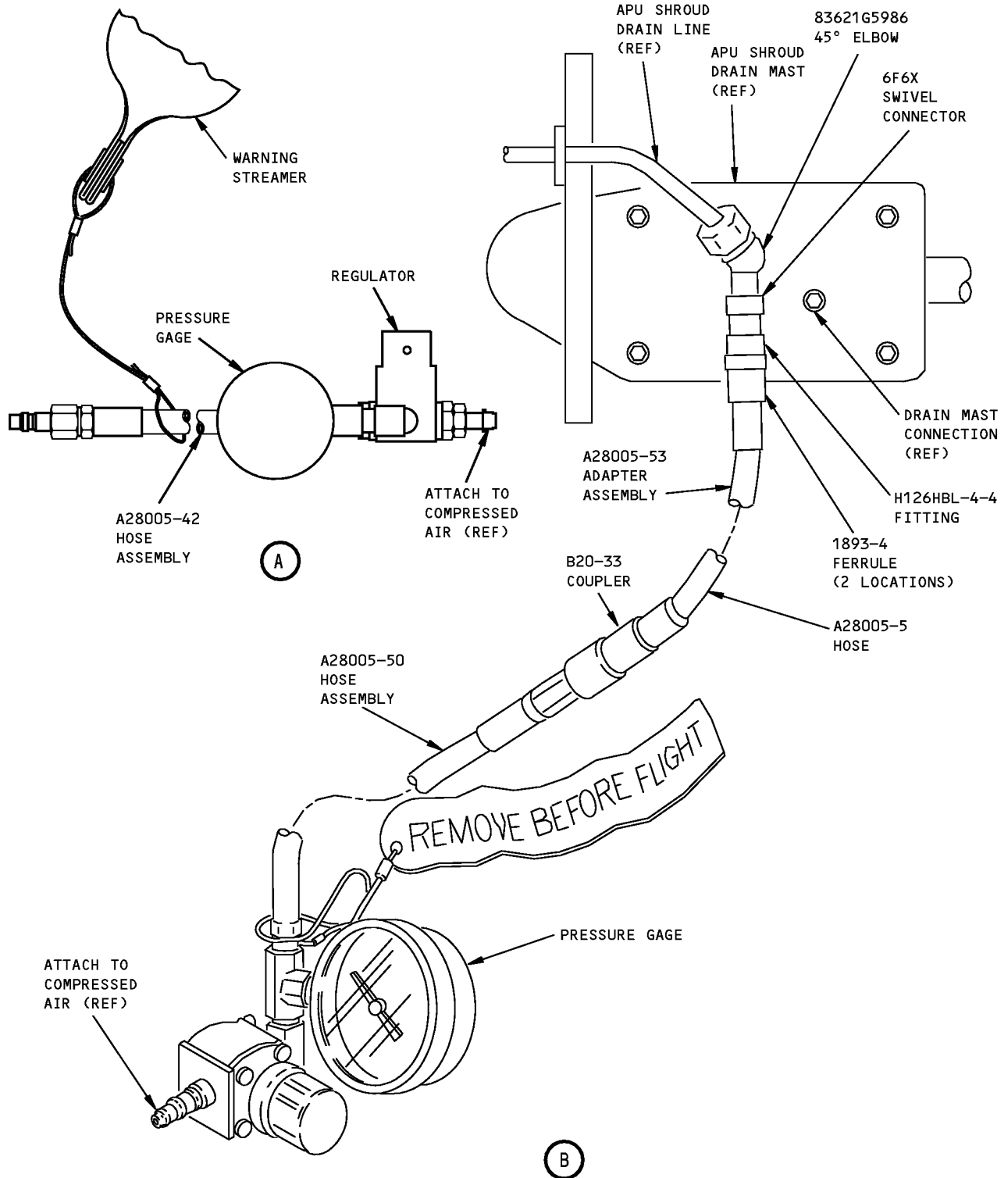
NOTE:
 A28005-50 replaces A28005-42 for future procurement.
 A28005-53 supersedes A28005-44.



LS1000 S0000217299_V2

APU Fuel Line Shroud Leak And Pressure Test Equipment
Figure 1 (Sheet 1 of 2)

ILLUSTRATED TOOL AND EQUIPMENT MANUAL



**APU Fuel Line Shroud Leak And Pressure Test Equipment
Figure 1 (Sheet 2 of 2)**



757

ILLUSTRATED TOOL AND EQUIPMENT MANUAL

PART NUMBER: MIT65B92408-1

NAME: ADAPTER SHAFT ALIGNMENT FIXTURE

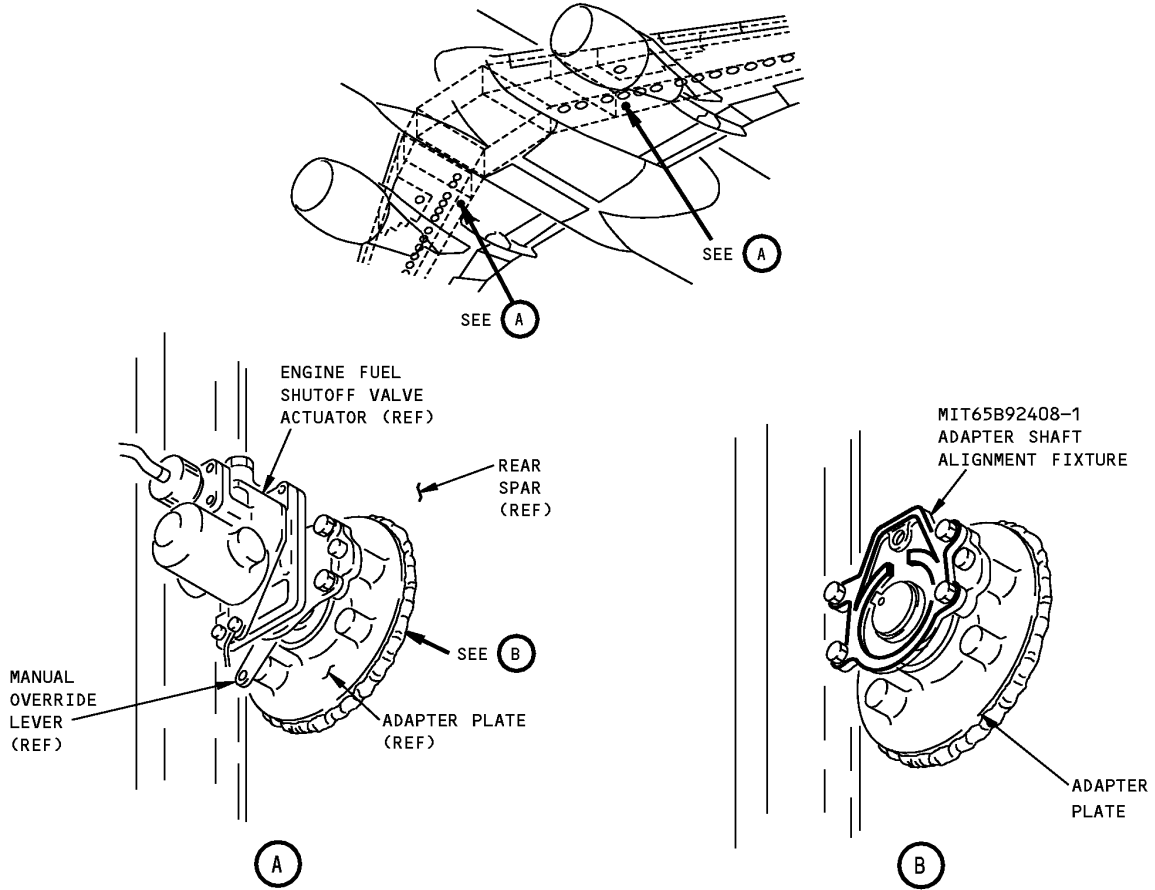
AIRPLANE MAINTENANCE: YES

COMPONENT MAINTENANCE: NO

USAGE & DESCRIPTION: The MIT65B92408-1 adapter shaft alignment fixture is used on all 757 airplanes. MIT65B92408-1 aligns the 343N3101-1 fuel feed valve body and the adapter shaft with the engine fuel shutoff valve actuator. Refer to AMM 28-22-02 for complete usage instructions. MIT65B92408-1 is fabricated from a mounting plate from a fuel feed valve actuator.

WEIGHT: 1 lb (0.45 kg)

DIMENSIONS: 2 x 3 x 3 inches (51 x 76 x 76 mm)



**Adapter Shaft Alignment Fixture
Figure 1**

ILLUSTRATED TOOL AND EQUIPMENT MANUAL

PART NUMBER: ST8709H

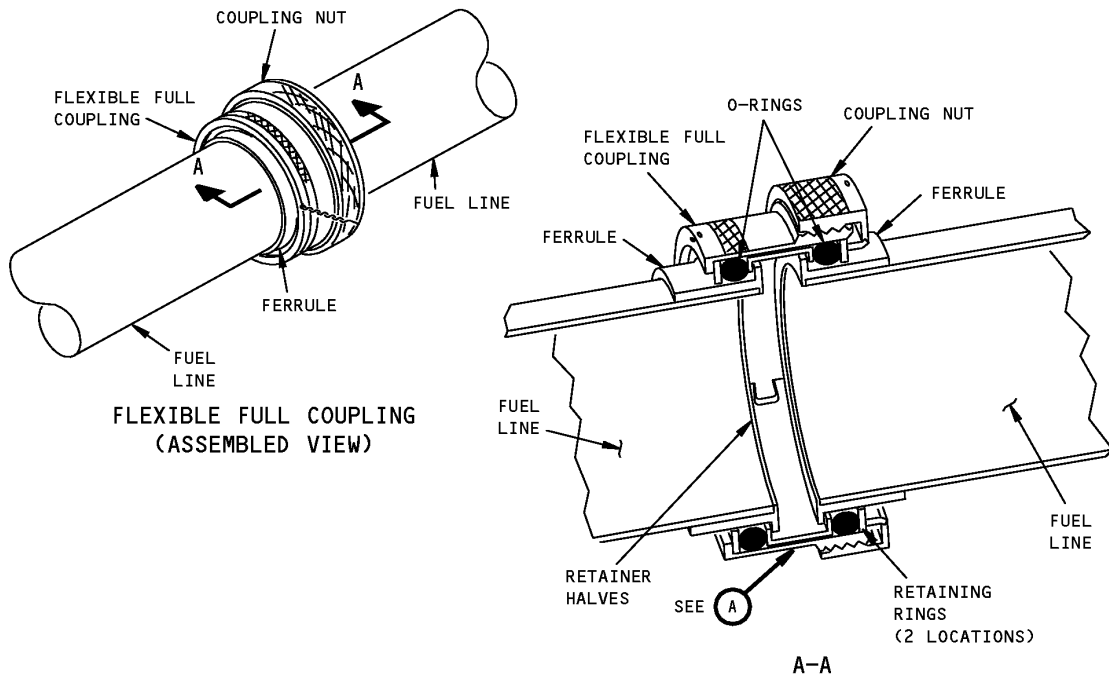
NAME: GO/NO-GO GAGE FOR ASSEMBLY OF WIGGINS BACC42R COUPLING

AIRPLANE MAINTENANCE: YES

COMPONENT MAINTENANCE: NO

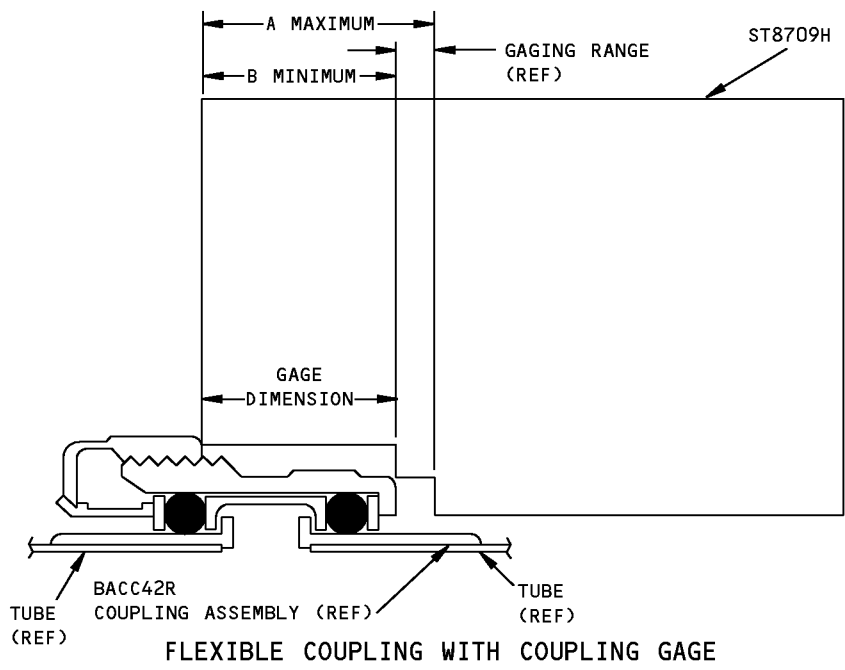
USAGE & DESCRIPTION: The ST8709H go/no-go gage for assembly of Wiggins BACC42R coupling is used on all 757 airplanes. ST8709H is a set of seven gages that are used to check the closure of Wiggins coupling installations to assure proper fit against seals per BAC5001-5. Refer to AMM 28-22-07 for complete usage instructions. The seven ST8709H gages are fabricated from corrosion resistant steel.

DIMENSIONS: 0.040 x 2 1/8 x 2 5/8 inches (1.016 x 53.975 x 66.675 mm)



**Go/No-Go Gage for Assembly of Wiggins BACC42R Coupling
Figure 1 (Sheet 1 of 2)**

ILLUSTRATED TOOL AND EQUIPMENT MANUAL



FLEXIBLE COUPLING WITH COUPLING GAGE

(A)

TUBE DIAMETER INCHES	BACC42R SIZE	A +0.000 -0.005 MAXIMUM	B +0.005 -0.000 MINIMUM	GAGE NO. ST8709H
1/2	08	0.590	0.470	-1
5/8	10	0.590	0.470	-1
3/4	12	0.690	0.550	-2
1	16	0.750	0.600	-3
1 1/4	20	0.750	0.600	-3
1 1/2	24	0.930	0.760	-4
1 3/4	28	0.930	0.760	-4
2	32	0.930	0.760	-4
2 1/4	36	0.930	0.760	-4
2 1/2	40	0.930	0.760	-4
3	48	0.930	0.760	-4
3 1/2	56	1.030	0.880	-5
4	64	1.030	0.880	-5
4 1/2	72	1.160	0.990	-6
5	80	1.390	1.220	-7
5 1/2	88	1.390	1.220	-7

DIMENSIONAL REQUIREMENTS FOR ASSEMBLING FLEXIBLE FULL COUPLING

Go/No-Go Gage for Assembly of Wiggins BACC42R Coupling
Figure 1 (Sheet 2 of 2)



757

ILLUSTRATED TOOL AND EQUIPMENT MANUAL

PART NUMBER: A28007-41

NAME: TEST BOX - FUEL QUANTITY INDICATING SYSTEM (FQIS)

AIRPLANE MAINTENANCE: YES

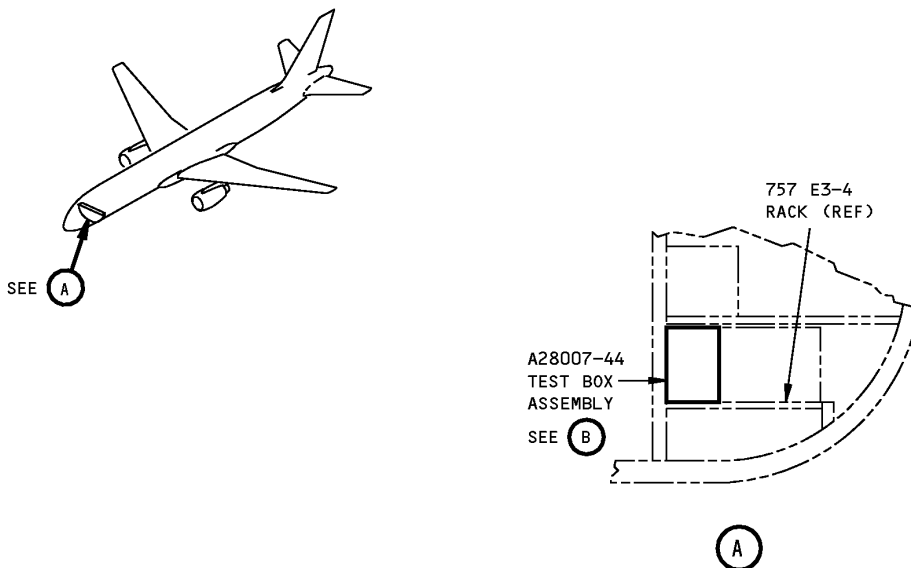
COMPONENT MAINTENANCE: NO

USAGE & DESCRIPTION: The A28007-41 test box is used on 757-200 airplanes, line number 1 through 379, equipped with Honeywell FQIS systems. The airplane's M121 fuel quantity processor unit, located on the E3-4 rack, is removed and replaced with the A28007 test box to perform the fuel quantity indication system test. Refer to the current A28007 drawing and AMM 28-41-00 for complete usage instructions. A28007-41 consists of an A28007-44 test box assembly contained in a storage box.

WEIGHT: 15 lbs (7 kg)

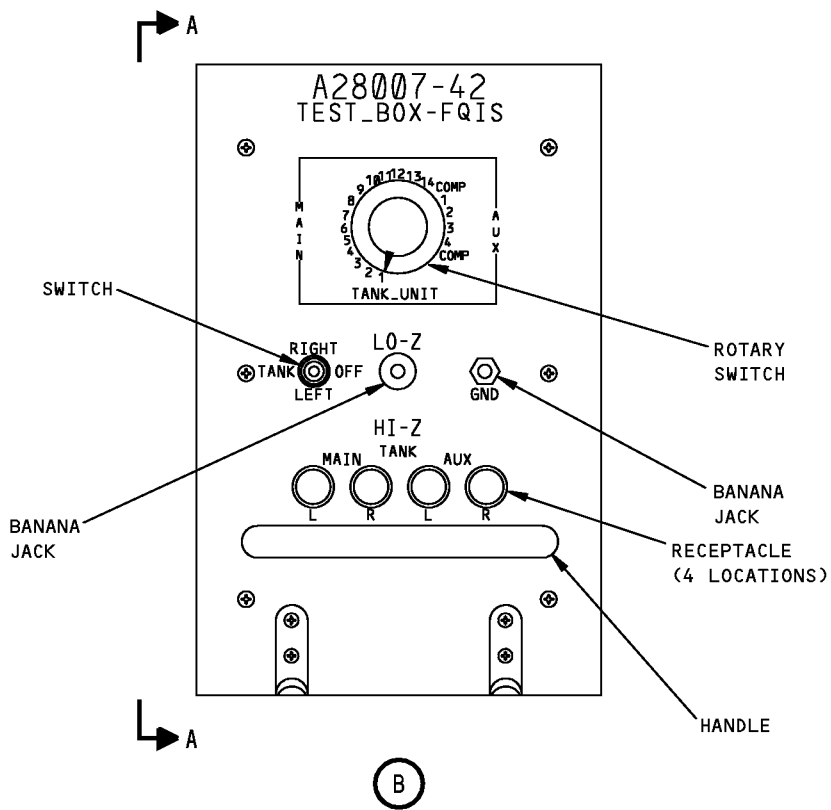
DIMENSIONS: 5 x 8 x 13 inches (127 x 203 x 530 mm)

NOTE: A28007-41 supersedes A28007-29.



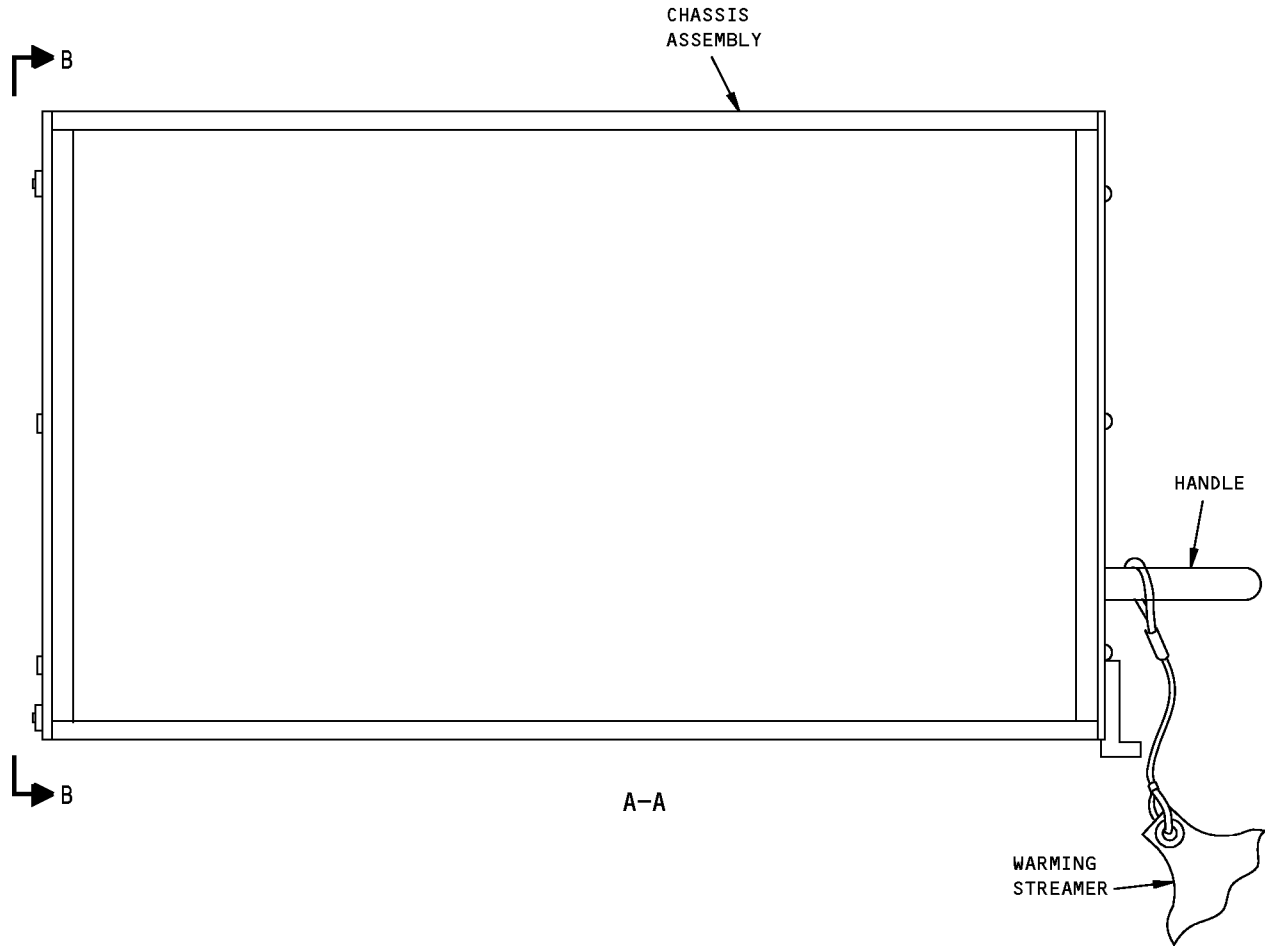
FQIS Test Box
Figure 1 (Sheet 1 of 4)

757
ILLUSTRATED TOOL AND EQUIPMENT MANUAL



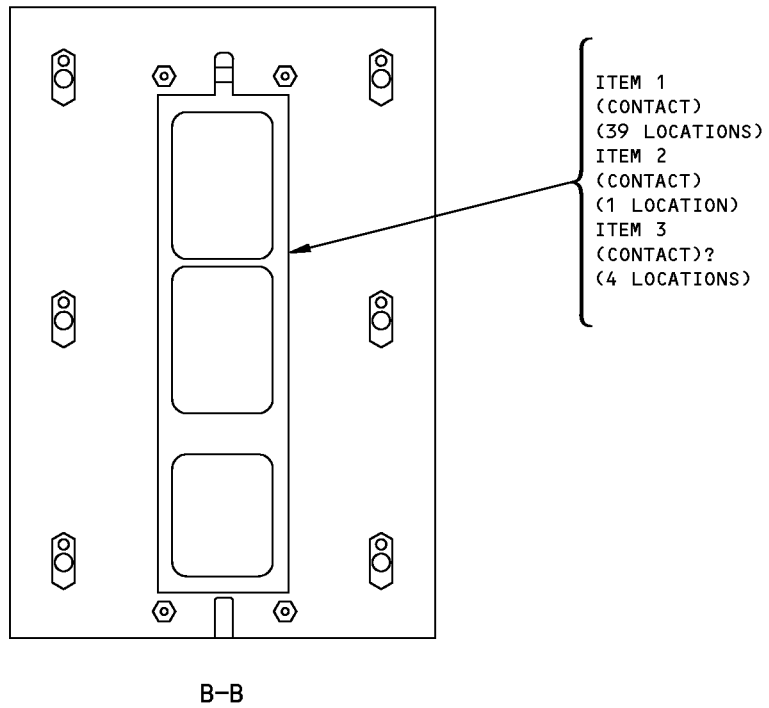
FQIS Test Box
Figure 1 (Sheet 2 of 4)

757
ILLUSTRATED TOOL AND EQUIPMENT MANUAL



FQIS Test Box
Figure 1 (Sheet 3 of 4)

757
ILLUSTRATED TOOL AND EQUIPMENT MANUAL



FQIS Test Box
Figure 1 (Sheet 4 of 4)



757

ILLUSTRATED TOOL AND EQUIPMENT MANUAL

REPAIRABLE/REPLACEABLE PARTS			
ITEM NO.	PART NO.	NOMENCLATURE	VENDOR CODE
1	031-1287-000	CONTACT	V71468
2	030-2280-000	CONTACT	V71468
3	249-1767-001	CONTACT	V71468



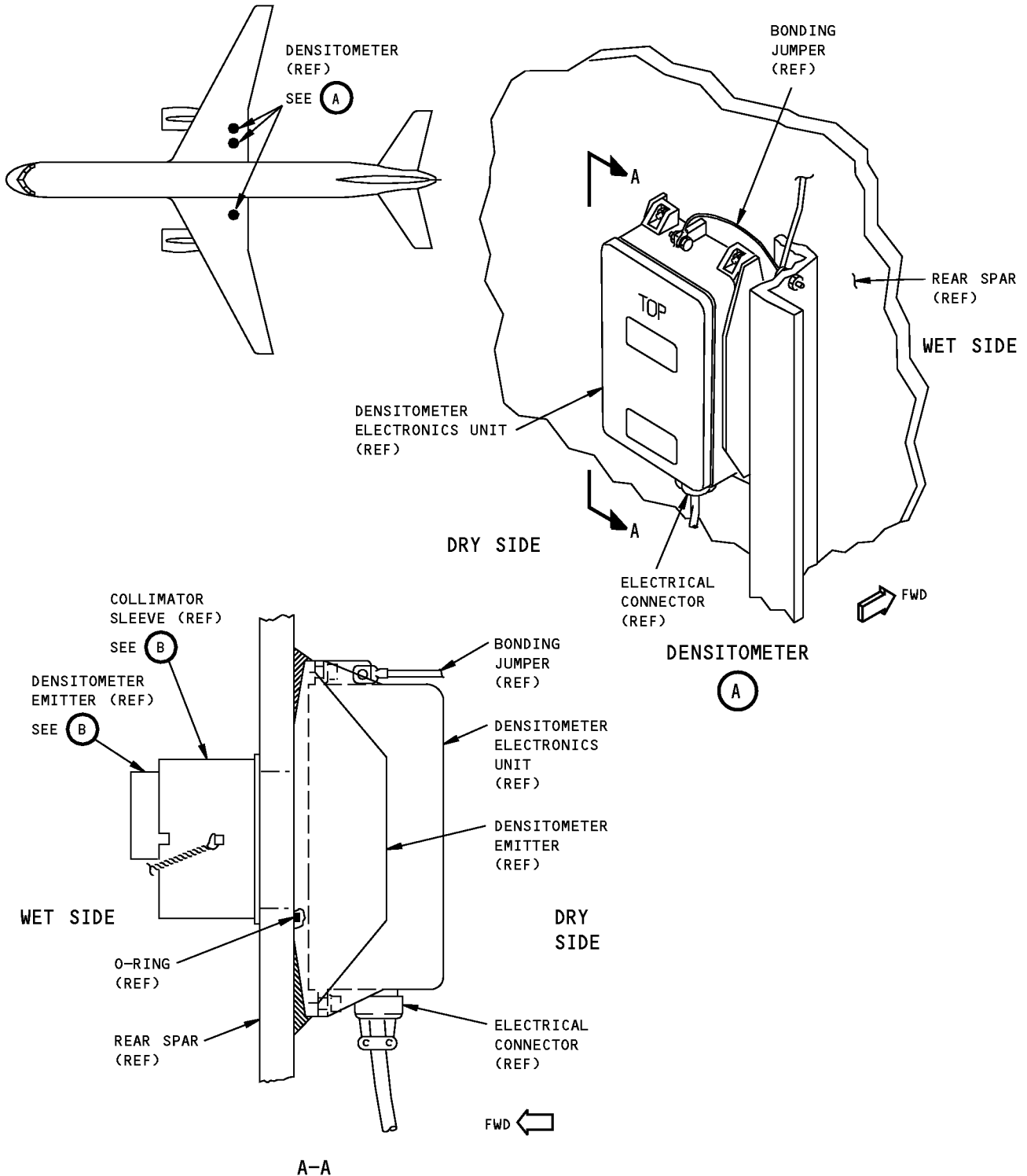
757

ILLUSTRATED TOOL AND EQUIPMENT MANUAL

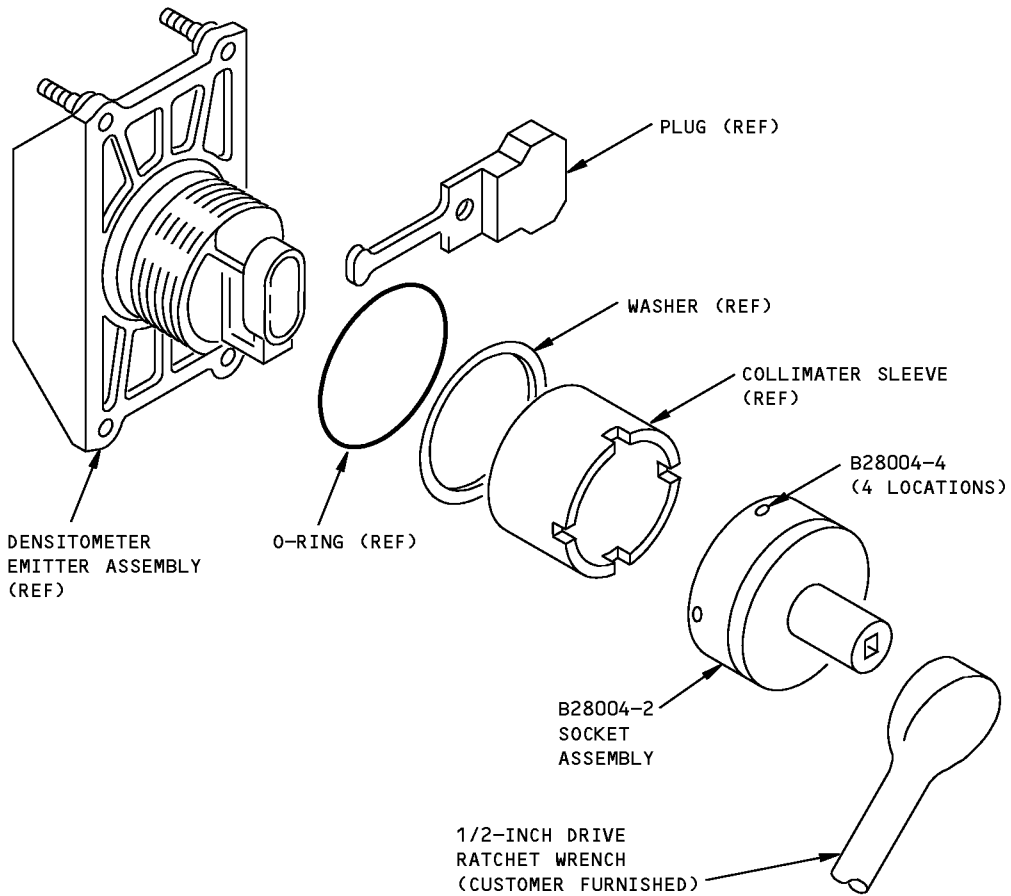
PART NUMBER: B28004-1

NAME:	SOCKET - INSTALLATION/REMOVAL, COLLIMATOR SLEEVE
AIRPLANE MAINTENANCE:	YES
COMPONENT MAINTENANCE:	NO
USAGE & DESCRIPTION:	<p>The B28004-1 socket is used on all 757 airplanes. The B28004 socket is used for installation or removal of the collimator sleeve from the densitometer emitter. Refer to the current B28004 drawing, AMM 28-41-03 and the Honeywell Handling Procedure Manual publication number C02-2193-001 for complete usage instructions.</p> <p>A densitometer measures fuel density. The densitometer consists of two parts, the densitometer emitter and the densitometer electronics unit. The densitometers are installed with the densitometer emitter in the fuel tank, the densitometer electronics unit is separated by a spar, outside of the tank.</p> <p>To remove the densitometer emitter requires defueling the tank and two people, one inside and one outside the tank. The densitometer emitter contains a low level radioactive source. Do not touch the area around the low level radioactive source. The Honeywell Handling Procedure Manual publication number C02-2193-001 must be available at the site where an emitter removal and installation is done.</p> <p>The B28004-1 consists of a B28004-2 socket assembly and four B28004-4 pins, all contained in a storage box.</p>
WEIGHT:	1 lb (0.45 kg)
DIMENSIONS:	3.0 x 4.0 x 4.0 inches (76 x 102 x 102 mm)

**757
ILLUSTRATED TOOL AND EQUIPMENT MANUAL**



**Collimator Sleeve Installation/Removal Socket
Figure 1 (Sheet 1 of 2)**



(B)

**Collimator Sleeve Installation/Removal Socket
Figure 1 (Sheet 2 of 2)**



757

ILLUSTRATED TOOL AND EQUIPMENT MANUAL

PART NUMBER: A28009-8, -13

NAME: EXTENDER BOARD - SURGE TANK FUEL LEVEL SENSOR

AIRPLANE MAINTENANCE: YES

COMPONENT MAINTENANCE: NO

USAGE & DESCRIPTION: The A28009-8 or -13 (preferred) extender board is used on all 757 airplanes. A28009 is used for continuity by removing the M586 surge tank fuel level sensor control card from the P50 printed circuit card file and connecting the A28009-9 or -14 extender board assembly to the D2514 connector. Refer to the current A28009 drawing and Fault Isolation Manual (FIM) 28-21-00 for complete usage instructions. A28009-8 and -13 consist of:

A28009-8		
QUANTITY	NOMENCLATURE	PART NUMBER
1	EXTENDER BOARD ASSEMBLY	A28009-9
1	STORAGE BOX	

A28009-13		
QUANTITY	NOMENCLATURE	PART NUMBER
1	EXTENDER BOARD ASSEMBLY	A28009-14
1	STORAGE BOX	

WEIGHT: 1 lb (0.9 kg)

DIMENSIONS: 1 x 6 x 12 inches (25 x 152 x 305 mm)

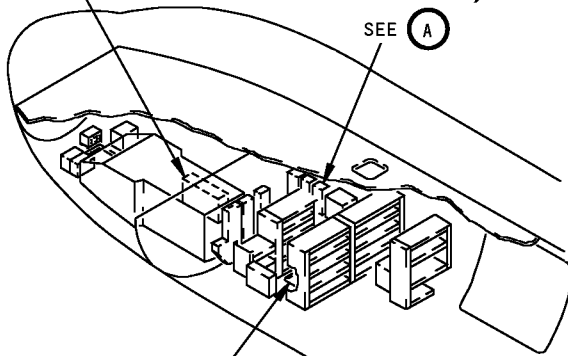
NOTE: A28009-13 replaces A28009-8 for future procurement.
A28009-8 supersedes A28009-1.

ILLUSTRATED TOOL AND EQUIPMENT MANUAL

MISCELLANEOUS
ELECTRICAL POWER
PANEL, P33 (REF)

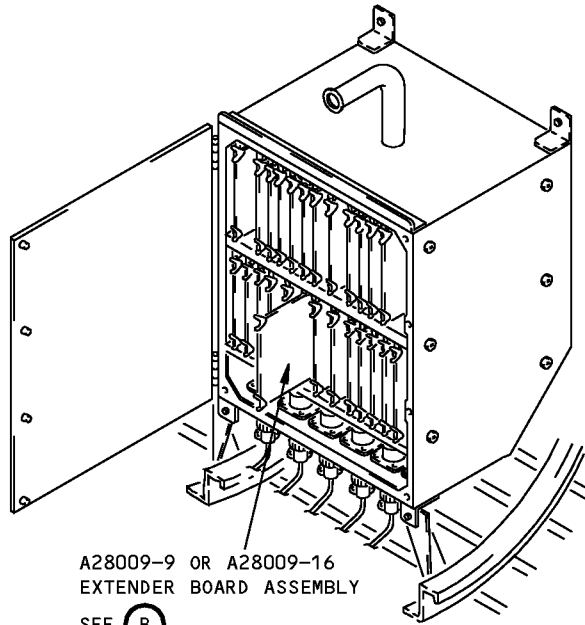
ELECTRICAL SYSTEM
CARD FILE, P50 (REF)

SEE (A)



ELECTRICAL/ELECTRONICS
ACCESS DOOR, 119BL (REF)

MAIN EQUIPMENT CENTER



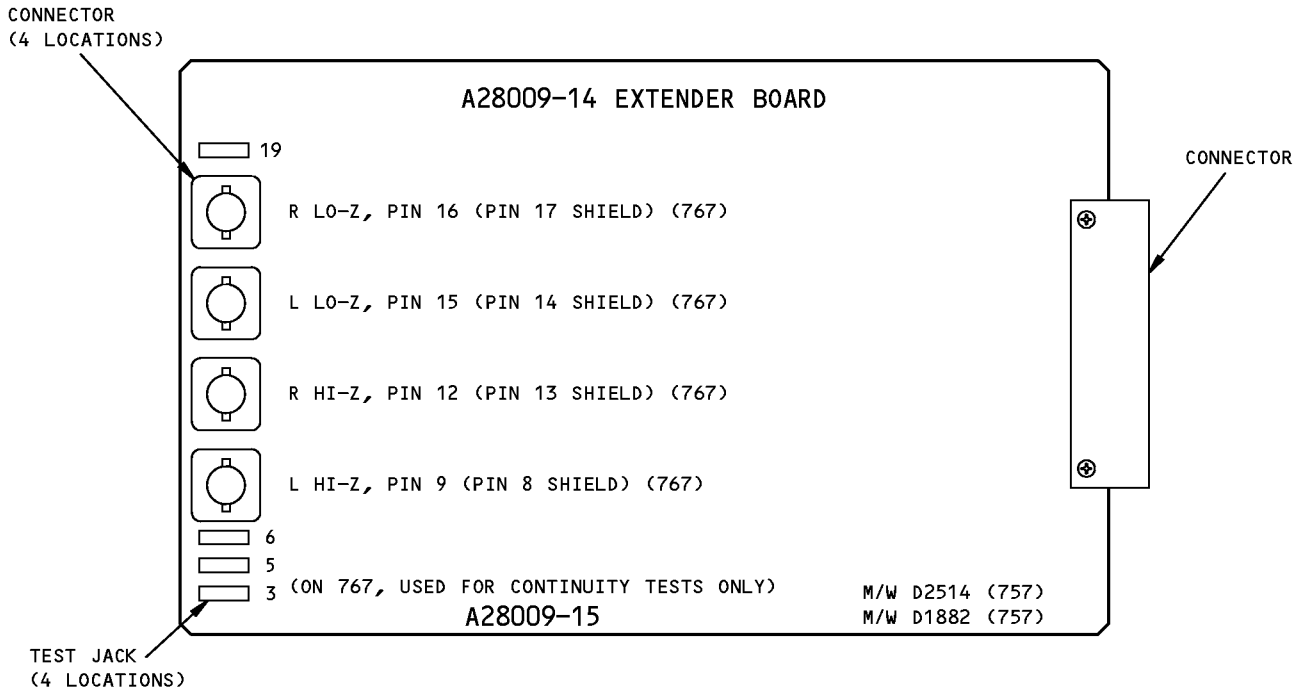
A28009-9 OR A28009-16
EXTENDER BOARD ASSEMBLY

SEE (B)

ELECTRICAL SYSTEM CARD FILE, P50

(A)

**Surge Tank Fuel Level Sensor Extender Board
Figure 1 (Sheet 1 of 2)**



**A28009-14 EXTENDER BOARD ASSEMBLY SHOWN
A28009-9 SIMILAR**

B

**Surge Tank Fuel Level Sensor Extender Board
Figure 1 (Sheet 2 of 2)**