

**CHAPTER**

**33**

**LIGHTING**



757  
ILLUSTRATED TOOL AND EQUIPMENT MANUAL

CHAPTER 33  
LIGHTING

Subject/Page	Date	Subject/Page	Date	Subject/Page	Date
EFFECTIVE PAGES					
1	Sep 20/2008				
2	BLANK				
33-CONTENTS					
1	Sep 20/2006				
2	BLANK				
33-00-01					
1	Sep 20/2006				
2	Sep 20/2006				
3	Sep 20/2006				
4	BLANK				
33-00-02					
1	Sep 20/2006				
2	Sep 20/2006				
3	Sep 20/2006				
4	Sep 20/2006				
5	Sep 20/2006				
6	Sep 20/2006				
7	Sep 20/2006				
8	Sep 20/2006				
9	Sep 20/2006				
10	Sep 20/2006				
11	Sep 20/2006				
12	Sep 20/2006				
13	Sep 20/2006				
14	Sep 20/2006				
33-10-01					
1	Sep 20/2006				
2	Sep 20/2006				

A = Added, R = Revised, O = Overflow, D = Deleted

# 33-EFFECTIVE PAGES



**757**  
**ILLUSTRATED TOOL AND EQUIPMENT MANUAL**

**TABLE OF CONTENTS**

<b><u>Subject</u></b>	<b><u>Title</u></b>	<b><u>Part No.</u></b>
<b>33-</b>	<b>LIGHTING</b>	
33-00-01	TEST BOX - AUTOBRIGHT SENSOR	A33004-32
33-00-02	BREAKOUT BOX - MULTIPURPOSE	A33003-359
33-10-01	TEST BOX - MASTER DIM AND TEST PRINTED CIRCUIT (PC) CARD	A33001-1

# **33-CONTENTS**



757

## ILLUSTRATED TOOL AND EQUIPMENT MANUAL

**PART NUMBER: A33004-32**

**NAME:** TEST BOX - AUTOBRIGHT SENSOR

**AIRPLANE MAINTENANCE:** NO

**COMPONENT MAINTENANCE:** YES

**USAGE & DESCRIPTION:** The A33004 drawing has been transferred to BAE Systems and will no longer be revised by Boeing. The A33004 inclusion in the 757 ITEM is for information and historical purposes only.

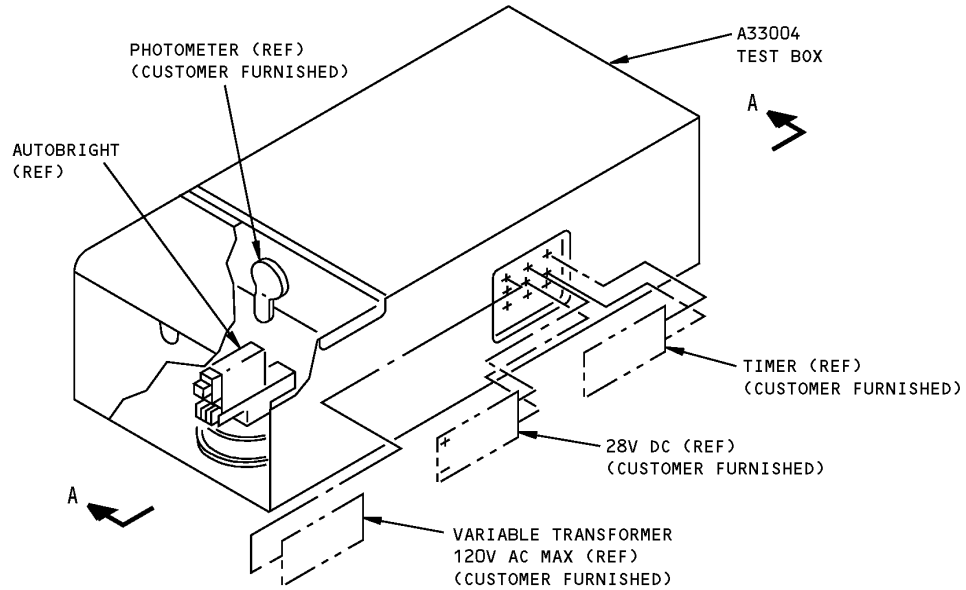
The A33004-32 test box is used during component maintenance on all 757 airplanes. A33004 is used to functionally test the flight deck instrument panel autobright sensor unit part numbers 285T0112-4,-5 and -6. Refer to CMM 33-61-51 for complete usage instructions. A33004-32 consists of banana jacks, resistors, connectors, switches, a fan, a thermostat, a bulb and electrical circuitry mounted on a panel and chassis assembly.

**WEIGHT:** 30 lbs (14 kg)

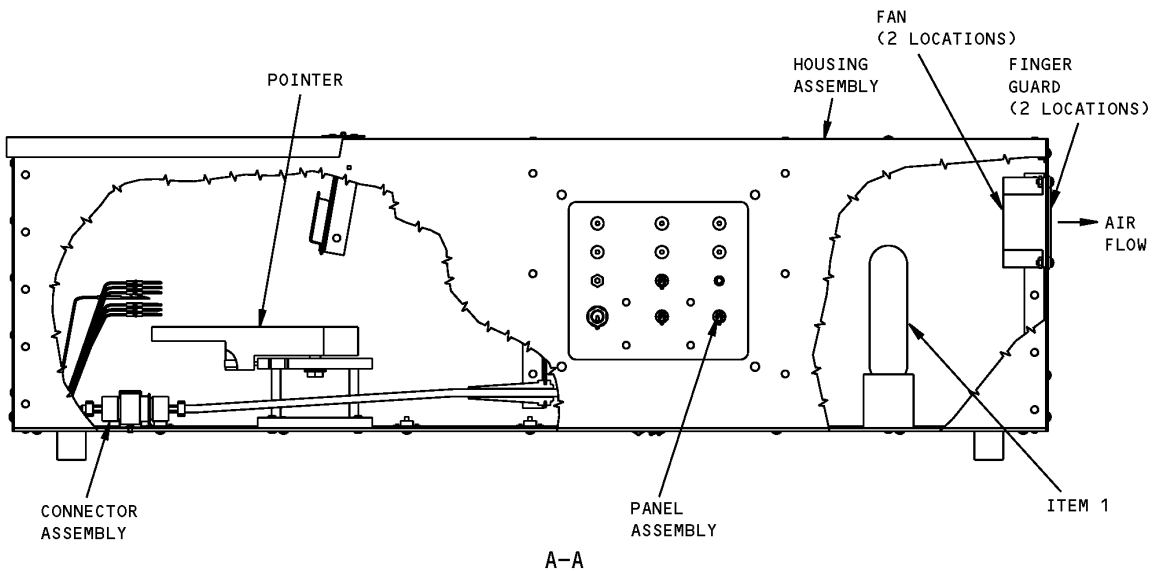
**DIMENSIONS:** 11 x 16 x 36 inches (279 x 406 x 914 mm)

**NOTE:** A33004-32 supersedes A33004-1 and A33002.

**ILLUSTRATED TOOL AND EQUIPMENT MANUAL**



**Autobright Sensor Test Box  
Figure 1 (Sheet 1 of 2)**



**Autobright Sensor Test Box  
Figure 1 (Sheet 2 of 2)**



757

ILLUSTRATED TOOL AND EQUIPMENT MANUAL

REPAIRABLE/REPLACEABLE PARTS			
ITEM NO.	PART NO.	NOMENCLATURE	VENDOR CODE
1	DDB	BULB	V09818



757

## ILLUSTRATED TOOL AND EQUIPMENT MANUAL

**PART NUMBER: A33003-359**

**NAME:** BREAKOUT BOX - MULTIPURPOSE

**AIRPLANE MAINTENANCE:** NO

**COMPONENT MAINTENANCE:** YES

**USAGE & DESCRIPTION:** This A33003-359 breakout box is used on all 757 airplanes. The A33003 is used for component testing of panel assemblies to access (breakout) contacts of MIL-C-5015 and MIL-C-26500 type circular connectors. Refer to the appropriate wire diagram manual and schematics, CMM's and fault isolation manuals for complete usage information.

All A33003 cable assemblies are not applicable to all 757 airplanes. NT008 is the only 757 airplane to use the A33003-407 cable, which is used for a 233N7519-302 data transfer unit receptacle panel assembly. the A33003-405 cable assembly is used on customer specified options that include the 233N7519-300/-301/-302 data transfer unit receptacle panel assembly. The information included on A33003 is not for use as a purchasing aid but for quick familiarity only. For complete information, refer to the current A33003 drawing.

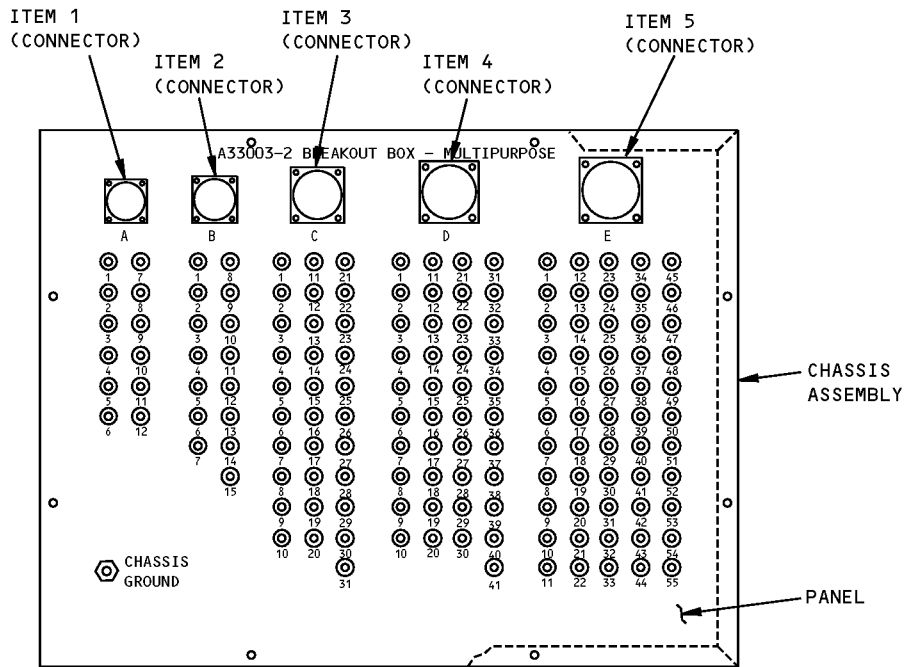
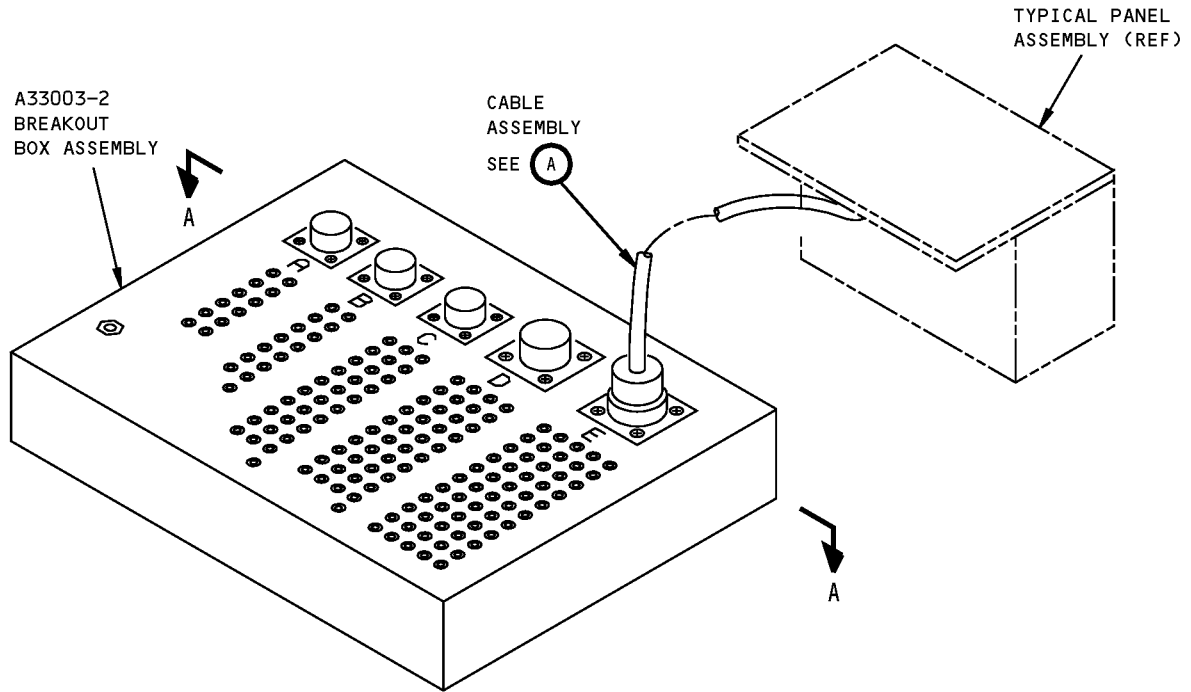
For 757 airplanes, the A33003-359 consists of an A33003-2 breakout box and A33003-390, -8 thru -14, -18 thru -21, -23, -25 thru -32, -35 thru -40, -43 thru -51, -360, -59, -60, -62, -63, -65, -160, -162 thru -167, -202, -204, -251, -252, -256, -258, -260 thru -263, -288, -322, -338 thru -341, -382, -383, -354, -361, -372, -387, -405 and -407 cable assemblies. All A33003-359 breakout box equipment is contained in a storage box.

**WEIGHT:** 100 lbs (45 kg)

**DIMENSIONS:** 24 x 24 x 44 inches (610 x 610 x 1118 mm)

**NOTE:** A33003-359 supersedes A33003-1.

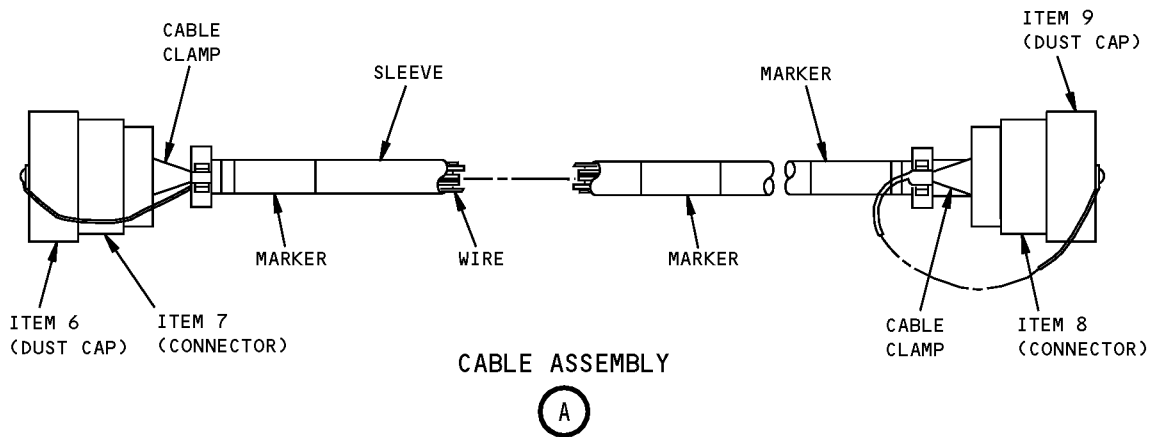
**757**  
**ILLUSTRATED TOOL AND EQUIPMENT MANUAL**



**BREAKOUT BOX ASSEMBLY**  
**A-A**

**Multipurpose Breakout Box**  
**Figure 1 (Sheet 1 of 13)**





**Multipurpose Breakout Box  
Figure 1 (Sheet 2 of 13)**



757

ILLUSTRATED TOOL AND EQUIPMENT MANUAL

REPAIRABLE/REPLACEABLE PARTS			
ITEM NO.	PART NO.	NOMENCLATURE	VENDOR CODE
<b>A33003-2 BREAKOUT BOX ASSEMBLY</b>			
1	M83723/72R1212N	CONNECTOR	
2	M83723/72R1415N	CONNECTOR	
3	M83723/72R1831N	CONNECTOR	
4	M83723/72R2041N	CONNECTOR	
5	M83723/72R2255N	CONNECTOR	
<b>A33003-390 CABLE ASSEMBLY</b>			
6	M83723/59-214AC	DUST CAP	
7	M83723/75R1415N	CONNECTOR	
8	M83723/75R1059	CONNECTOR	
9	M83723/59-210AC	DUST CAP	
<b>A33003-8 CABLE ASSEMBLY</b>			
6	M83723/59-212AC	DUST CAP	
7	M83723/75R1212N	CONNECTOR	
8	M83723/83R123N	CONNECTOR	
9	M83723/60112AC	DUST CAP	
<b>A33003-9 CABLE ASSEMBLY</b>			
6	M83723/59-212AC	DUST CAP	
7	M83723/75R1212N	CONNECTOR	
8	M83723/75R1212N	CONNECTOR	
9	M83723/59-212AC	DUST CAP	
<b>A33003-10 CABLE ASSEMBLY</b>			
6	M83723/59-212AC	DUST CAP	
7	M83723/75R1212N	CONNECTOR	
8	M83723/75R12127	CONNECTOR	
9	M83723/59-212AC	DUST CAP	
<b>A33003-11 CABLE ASSEMBLY</b>			
6	M83723/59-212AC	DUST CAP	
7	M83723/75R1212N	CONNECTOR	
8	M83723/75R12128	CONNECTOR	
9	M83723/59-212AC	DUST CAP	
<b>A33003-12 CABLE ASSEMBLY</b>			
6	M83723/59-214AC	DUST CAP	
7	M83723/75R1415N	CONNECTOR	
8	M83723/75R12129	CONNECTOR	
9	M83723/59-212AC	DUST CAP	

Multipurpose Breakout Box  
Figure 1 (Sheet 3 of 13)



757

ILLUSTRATED TOOL AND EQUIPMENT MANUAL

REPAIRABLE/REPLACEABLE PARTS			
ITEM NO.	PART NO.	NOMENCLATURE	VENDOR CODE
<b>A33003-13 CABLE ASSEMBLY</b>			
6	M83723/59-212AC	DUST CAP	
7	M83723/75R1212N	CONNECTOR	
8	M83723/71R1212N	CONNECTOR	
9	M83723/60-212AC	DUST CAP	
<b>A33003-14 CABLE ASSEMBLY</b>			
6	M83723/59-212AC	DUST CAP	
7	M83723/75R1212N	CONNECTOR	
8	M83723/71R1212N	CONNECTOR	
9	M83723/60-212AC	DUST CAP	
<b>A33003-18 CABLE ASSEMBLY</b>			
6	M83723/59-220AC	DUST CAP	
7	M83723/75R2041N	CONNECTOR	
8	M83723/75R1415N	CONNECTOR	
9	M83723/59-214AC	DUST CAP	
<b>A33003-19 CABLE ASSEMBLY</b>			
6	M83723/59-214AC	DUST CAP	
7	M83723/75R1415N	CONNECTOR	
8	M83723/75R14156	CONNECTOR	
9	M83723/59-214AC	DUST CAP	
<b>A33003-20 CABLE ASSEMBLY</b>			
6	M83723/59-218AC	DUST CAP	
7	M83723/75R1831N	CONNECTOR	
8	M83723/75R14157	CONNECTOR	
9	M83723/59-214AC	DUST CAP	
<b>A33003-21 CABLE ASSEMBLY</b>			
6	M83723/59-214AC	DUST CAP	
7	M83723/75R1415N	CONNECTOR	
8	M83723/75R14158	CONNECTOR	
9	M83723/59-214AC	DUST CAP	
<b>A33003-23 CABLE ASSEMBLY</b>			
6	M83723/59-214AC	DUST CAP	
7	M83723/75R1415N	CONNECTOR	
8	M83723/71R1415N	CONNECTOR	
9	M83723/60-214AC	DUST CAP	

Multipurpose Breakout Box  
Figure 1 (Sheet 4 of 13)



757

ILLUSTRATED TOOL AND EQUIPMENT MANUAL

REPAIRABLE/REPLACEABLE PARTS			
ITEM NO.	PART NO.	NOMENCLATURE	VENDOR CODE
<b>A33003-25 CABLE ASSEMBLY</b>			
6	M83723/59-214AC	DUST CAP	
7	M83723/75R1415N	CONNECTOR	
8	M83723/75R1610N	CONNECTOR	
9	M83723/59-216AC	DUST CAP	
<b>A33003-26 CABLE ASSEMBLY</b>			
6	M83723/59-220AC	DUST CAP	
7	M83723/75R2041N	CONNECTOR	
8	M83723/75R1624N	CONNECTOR	
9	M83723/59-216AC	DUST CAP	
<b>A33003-27 CABLE ASSEMBLY</b>			
6	M83723/59-218AC	DUST CAP	
7	M83723/75R1831N	CONNECTOR	
8	M83723/75R16246	CONNECTOR	
9	M83723/59-216AC	DUST CAP	
<b>A33003-28 CABLE ASSEMBLY</b>			
6	M83723/59-222AC	DUST CAP	
7	M83723/75R2255N	CONNECTOR	
8	M83723/75R16247	CONNECTOR	
9	M83723/59-216AC	DUST CAP	
<b>A33003-29 CABLE ASSEMBLY</b>			
6	M83723/59-218AC	DUST CAP	
7	M83723/75R1831N	CONNECTOR	
8	M83723/75R16249	CONNECTOR	
9	M83723/59-216AC	DUST CAP	
<b>A33003-30 CABLE ASSEMBLY</b>			
6	M83723/59-218AC	DUST CAP	
7	M83723/75R1831N	CONNECTOR	
8	M83723/71R1624N	CONNECTOR	
9	M83723/60-216AC	DUST CAP	
<b>A33003-31 CABLE ASSEMBLY</b>			
6	M83723/59-218AC	DUST CAP	
7	M83723/75R1831N	CONNECTOR	
8	M83723/75R16248	CONNECTOR	
9	M83723/60-216AC	DUST CAP	

Multipurpose Breakout Box  
Figure 1 (Sheet 5 of 13)



757

ILLUSTRATED TOOL AND EQUIPMENT MANUAL

REPAIRABLE/REPLACEABLE PARTS			
ITEM NO.	PART NO.	NOMENCLATURE	VENDOR CODE
<b>A33003-32 CABLE ASSEMBLY</b>			
6	M83723/59-214AC	DUST CAP	
7	M83723/75R1415N	CONNECTOR	
8	M83723/75R1814N	CONNECTOR	
9	M83723/60-218AC	DUST CAP	
<b>A33003-35 CABLE ASSEMBLY</b>			
6	M83723/59-218AC	DUST CAP	
7	M83723/75R1831N	CONNECTOR	
8	M83723/75R1831N	CONNECTOR	
9	M83723/59-218AC	DUST CAP	
<b>A33003-36 CABLE ASSEMBLY</b>			
6	M83723/59-218AC	DUST CAP	
7	M83723/75R1831N	CONNECTOR	
8	M83723/75R18316	CONNECTOR	
9	M83723/59-218AC	DUST CAP	
<b>A33003-37 CABLE ASSEMBLY</b>			
6	M83723/59-220AC	DUST CAP	
7	M83723/75R2041N	CONNECTOR	
8	M83723/75R18317	CONNECTOR	
9	M83723/59-218AC	DUST CAP	
<b>A33003-38 CABLE ASSEMBLY</b>			
6	M83723/59-218AC	DUST CAP	
7	M83723/75R1831N	CONNECTOR	
8	M83723/75R18318	CONNECTOR	
9	M83723/59-218AC	DUST CAP	
<b>A33003-39 CABLE ASSEMBLY</b>			
6	M83723/59-218AC	DUST CAP	
7	M83723/75R1831N	CONNECTOR	
8	M83723/75R18319	CONNECTOR	
9	M83723/59-218AC	DUST CAP	
<b>A33003-40 CABLE ASSEMBLY</b>			
6	M83723/59-240AC	DUST CAP	
7	M83723/75R2041N	CONNECTOR	
8	M83723/71R183110	CONNECTOR	
9	M83723/59-218AC	DUST CAP	

Multipurpose Breakout Box  
Figure 1 (Sheet 6 of 13)



757

ILLUSTRATED TOOL AND EQUIPMENT MANUAL

REPAIRABLE/REPLACEABLE PARTS			
ITEM NO.	PART NO.	NOMENCLATURE	VENDOR CODE
<b>A33003-43 CABLE ASSEMBLY</b>			
6	M83723/59-218AC	DUST CAP	
7	M83723/75R1831N	CONNECTOR	
8	M83723/75R20256	CONNECTOR	
9	M83723/59-220AC	DUST CAP	
<b>A33003-44 CABLE ASSEMBLY</b>			
6	M83723/59-218AC	DUST CAP	
7	M83723/75R1831N	CONNECTOR	
8	M83723/75R2028N	CONNECTOR	
9	M83723/59-220AC	DUST CAP	
<b>A33003-45 CABLE ASSEMBLY</b>			
6	M83723/59-220AC	DUST CAP	
7	M83723/75R2041N	CONNECTOR	
8	M83723/75R20397	CONNECTOR	
9	M83723/59-220AC	DUST CAP	
<b>A33003-46 CABLE ASSEMBLY</b>			
6	M83723/59-220AC	DUST CAP	
7	M83723/75R2041N	CONNECTOR	
8	M83723/75R203910	CONNECTOR	
9	M83723/59-220AC	DUST CAP	
<b>A33003-47 CABLE ASSEMBLY</b>			
6	M83723/59-220AC	DUST CAP	
7	M83723/75R2041N	CONNECTOR	
8	M83723/75R2041N	CONNECTOR	
9	M83723/59-220AC	DUST CAP	
<b>A33003-48 CABLE ASSEMBLY</b>			
6	M83723/59-222AC	DUST CAP	
7	M83723/75R2255N	CONNECTOR	
8	M83723/75R20416	CONNECTOR	
9	M83723/59-220AC	DUST CAP	
<b>A33003-49 CABLE ASSEMBLY</b>			
6	M83723/59-220AC	DUST CAP	
7	M83723/75R2041N	CONNECTOR	
8	M83723/71R20417	CONNECTOR	
9	M83723/59-220AC	DUST CAP	

Multipurpose Breakout Box  
Figure 1 (Sheet 7 of 13)



757

ILLUSTRATED TOOL AND EQUIPMENT MANUAL

REPAIRABLE/REPLACEABLE PARTS			
ITEM NO.	PART NO.	NOMENCLATURE	VENDOR CODE
<b>A33003-50 CABLE ASSEMBLY</b>			
6	M83723/59-222AC	DUST CAP	
7	M83723/75R2255N	CONNECTOR	
8	M83723/75R20418	CONNECTOR	
9	M83723/59-220AC	DUST CAP	
<b>A33003-51 CABLE ASSEMBLY</b>			
6	M83723/59-222AC	DUST CAP	
7	M83723/75R2255N	CONNECTOR	
8	M83723/75R204110	CONNECTOR	
9	M83723/59-220AC	DUST CAP	
<b>A33003-360 CABLE ASSEMBLY</b>			
6	M83723/59-222AC	DUST CAP	
7	M83723/75R2255N	CONNECTOR	
8	M83723/75R2255N	CONNECTOR	
9	M83723/59-222AC	DUST CAP	
<b>A33003-59 CABLE ASSEMBLY</b>			
6	M83723/59-222AC	DUST CAP	
7	M83723/75R2255N	CONNECTOR	
8	M83723/75R22556	CONNECTOR	
9	M83723/59-222AC	DUST CAP	
<b>A33003-60 CABLE ASSEMBLY</b>			
6	M83723/59-222AC	DUST CAP	
7	M83723/75R2255N	CONNECTOR	
8	M83723/75R22557	CONNECTOR	
9	M83723/59-222AC	DUST CAP	
<b>A33003-62 CABLE ASSEMBLY</b>			
6	M83723/59-222AC	DUST CAP	
7	M83723/75R2255N	CONNECTOR	
8	M83723/75R22559	CONNECTOR	
9	M83723/59-222AC	DUST CAP	
<b>A33003-63 CABLE ASSEMBLY</b>			
6	M83723/59-222AC	DUST CAP	
7	M83723/75R2255N	CONNECTOR	
8	M83723/75R225510	CONNECTOR	
9	M83723/59-222AC	DUST CAP	

Multipurpose Breakout Box  
Figure 1 (Sheet 8 of 13)



757

ILLUSTRATED TOOL AND EQUIPMENT MANUAL

REPAIRABLE/REPLACEABLE PARTS			
ITEM NO.	PART NO.	NOMENCLATURE	VENDOR CODE
<b>A33003-65 CABLE ASSEMBLY</b>			
6	M83723/59-222AC	DUST CAP	
7	M83723/75R2255N	CONNECTOR	
8	M83723/71R2461N	CONNECTOR	
9	M83723/60-224AC	DUST CAP	
<b>A33003-160 CABLE ASSEMBLY</b>			
6	M83723/59-212AC	DUST CAP	
7	M83723/75R1212N	CONNECTOR	
8	M83723/71R105N	CONNECTOR	
9	M83723/59-210AC	DUST CAP	
<b>A33003-162 CABLE ASSEMBLY</b>			
6	M83723/59-212AC	DUST CAP	
7	M83723/75R1415N	CONNECTOR	
8	M83723/75R141510	CONNECTOR	
9	M83723/59-214AC	DUST CAP	
<b>A33003-163 CABLE ASSEMBLY</b>			
6	M83723/59-212AC	DUST CAP	
7	M83723/75R1415N	CONNECTOR	
8	M83723/75R141510	CONNECTOR	
9	M83723/59-214AC	DUST CAP	
<b>A33003-164 CABLE ASSEMBLY</b>			
6	M83723/59-218AC	DUST CAP	
7	M83723/75R1831N	CONNECTOR	
8	M83723/75R162410	CONNECTOR	
9	M83723/59-216AC	DUST CAP	
<b>A33003-165 CABLE ASSEMBLY</b>			
6	M83723/59-218AC	DUST CAP	
7	M83723/75R1831N	CONNECTOR	
8	M83723/75R20287	CONNECTOR	
9	M83723/59-220AC	DUST CAP	
<b>A33003-166 CABLE ASSEMBLY</b>			
6	M83723/59-220AC	DUST CAP	
7	M83723/75R2041N	CONNECTOR	
8	M83723/75R20288	CONNECTOR	
9	M83723/59-220-AC	DUST CAP	

Multipurpose Breakout Box  
Figure 1 (Sheet 9 of 13)





757

ILLUSTRATED TOOL AND EQUIPMENT MANUAL

REPAIRABLE/REPLACEABLE PARTS			
ITEM NO.	PART NO.	NOMENCLATURE	VENDOR CODE
<b>A33003-167 CABLE ASSEMBLY</b>			
6	M83723/59-214AC	DUST CAP	
7	M83723/75R1415N	CONNECTOR	
8	M83723/75R12126	CONNECTOR	
9	M83723/59-214AC	DUST CAP	
<b>A33003-202 CABLE ASSEMBLY</b>			
6	M83723/59-220AC	DUST CAP	
7	M83723/75R2041N	CONNECTOR	
8	M83723/72R2255N	CONNECTOR	
9	M83723/60-222AC	DUST CAP	
<b>A33003-204 CABLE ASSEMBLY</b>			
6	M83723/59-220AC	DUST CAP	
7	M83723/75R2041N	CONNECTOR	
8	M83723/75R121210	CONNECTOR	
9	M83723/59-212AC	DUST CAP	
<b>A33003-251 CABLE ASSEMBLY</b>			
6	M83723/59-214AC	DUST CAP	
7	M83723/75R1415N	CONNECTOR	
8	M83723/75R14129	CONNECTOR	
9	M83723/59-214AC	DUST CAP	
<b>A33003-252 CABLE ASSEMBLY</b>			
6	M83723/59-212AC	DUST CAP	
7	M83723/75R1212N	CONNECTOR	
8	M83723/75R14127	CONNECTOR	
9	M83723/59-214AC	DUST CAP	
<b>A33003-256 CABLE ASSEMBLY</b>			
6	M83723/59-212AC	DUST CAP	
7	M83723/75R1212N	CONNECTOR	
8	M83723/83R1237	CONNECTOR	
9	M83723/60-112AC	DUST CAP	
<b>A33003-258 CABLE ASSEMBLY</b>			
6	M83723/59-212AC	DUST CAP	
7	M83723/75R1212N	CONNECTOR	
8	M83723/82R1476	CONNECTOR	
9	M83723/60-114AC	DUST CAP	

Multipurpose Breakout Box  
Figure 1 (Sheet 10 of 13)



757

ILLUSTRATED TOOL AND EQUIPMENT MANUAL

REPAIRABLE/REPLACEABLE PARTS			
ITEM NO.	PART NO.	NOMENCLATURE	VENDOR CODE
<b>A33003-260 CABLE ASSEMBLY</b>			
6	M83723/59-212AC	DUST CAP	
7	M83723/75R1212N	CONNECTOR	
8	M83723/87R1476	CONNECTOR	
9	M83723/59-114AC	DUST CAP	
<b>A33003-261 CABLE ASSEMBLY</b>			
6	M83723/59-220AC	DUST CAP	
7	M83723/75R2041N	CONNECTOR	
8	M83723/72R20396	CONNECTOR	
9	M83723/59-220AC	DUST CAP	
<b>A33003-262 CABLE ASSEMBLY</b>			
6	M83723/59-218AC	DUST CAP	
7	M83723/75R1831N	CONNECTOR	
8	M83723/71R18316	CONNECTOR	
9	M83723/60-218AC	DUST CAP	
<b>A33003-263 CABLE ASSEMBLY</b>			
6	M83723/59-218AC	DUST CAP	
7	M83723/75R1831N	CONNECTOR	
8	M83723/71R18318	CONNECTOR	
9	M83723/60-218AC	DUST CAP	
<b>A33003-288 CABLE ASSEMBLY</b>			
6	M83723/59-222AC	DUST CAP	
7	M83723/75R2255N	CONNECTOR	
8	MS27473E18A53P	CONNECTOR	
9	MS27510A18C	DUST CAP	
<b>A33003-322 CABLE ASSEMBLY</b>			
6	M83723/59-220AC	DUST CAP	
7	M83723/75R2041N	CONNECTOR	
8	M83723/75R2039N	CONNECTOR	
9	M83723/59-220AC	DUST CAP	
<b>A33003-338 CABLE ASSEMBLY</b>			
6	M83723/59-212AC	DUST CAP	
7	M83723/75R1212N	CONNECTOR	
8	M83723/82R1610N	CONNECTOR	
9	M83723/60-116AC	DUST CAP	

Multipurpose Breakout Box  
Figure 1 (Sheet 11 of 13)



757

ILLUSTRATED TOOL AND EQUIPMENT MANUAL

REPAIRABLE/REPLACEABLE PARTS			
ITEM NO.	PART NO.	NOMENCLATURE	VENDOR CODE
<b>A33003-339 CABLE ASSEMBLY</b>			
6	M83723/59-218AC	DUST CAP	
7	M83723/75R1831N	CONNECTOR	
8	M83723/82R1624N	CONNECTOR	
9	M83723/60-116AC	DUST CAP	
<b>A33003-340 CABLE ASSEMBLY</b>			
6	M83723/59-212AC	DUST CAP	
7	M83723/75R1212N	CONNECTOR	
8	M83723/83R1888	CONNECTOR	
9	M83723/60-118AC	DUST CAP	
<b>A33003-341 CABLE ASSEMBLY</b>			
6	M83723/59-212AC	DUST CAP	
7	M83723/75R1212N	CONNECTOR	
8	M83723/83R188N	CONNECTOR	
9	M83723/60-118AC	DUST CAP	
<b>A33003-382 CABLE ASSEMBLY</b>			
6	M83723/59-220AC	DUST CAP	
7	M83723/75R2041N	CONNECTOR	
8	MS3101E32-7S	CONNECTOR	
9	MS25043-32DA	DUST CAP	
<b>A33003-383 CABLE ASSEMBLY</b>			
6	M83723/59-220AC	DUST CAP	
7	M83723/75R2041N	CONNECTOR	
8	MS3101E32-7WS	CONNECTOR	
9	MS25043-32DA	DUST CAP	
<b>A33003-354 CABLE ASSEMBLY</b>			
6	M83723/59-218AC	DUST CAP	
7	M83723/75R1831N	CONNECTOR	
8	M83723/76R1624N	CONNECTOR	
9	M83723/59-216AC	DUST CAP	
<b>A33003-361 CABLE ASSEMBLY</b>			
6	M83723/59-212AC	DUST CAP	
7	M83723/75R1212N	CONNECTOR	
8	M83723/76R12128	CONNECTOR	
9	M83723/59-212AC	DUST CAP	

Multipurpose Breakout Box  
Figure 1 (Sheet 12 of 13)



757

ILLUSTRATED TOOL AND EQUIPMENT MANUAL

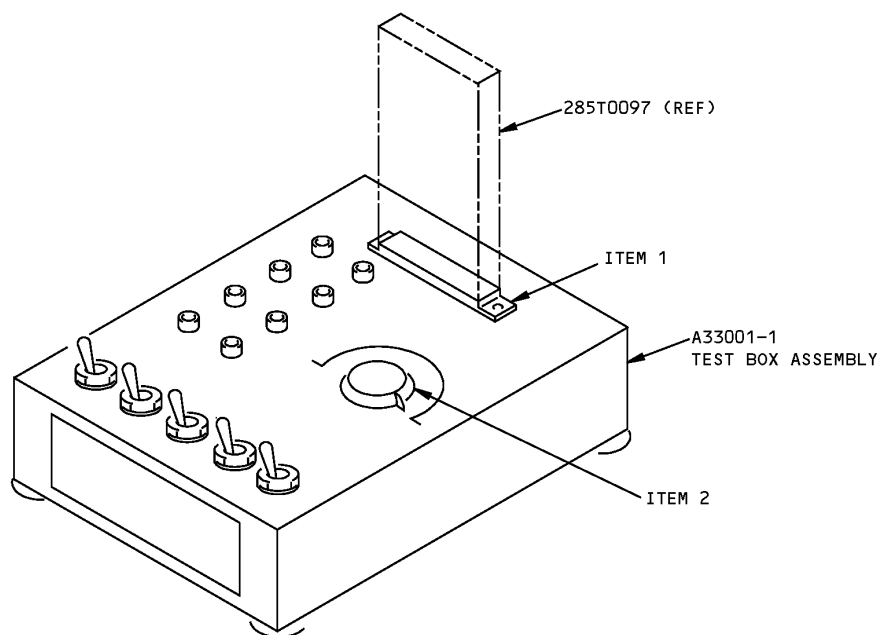
REPAIRABLE/REPLACEABLE PARTS			
ITEM NO.	PART NO.	NOMENCLATURE	VENDOR CODE
A33003-372 CABLE ASSEMBLY			
6	M83723/59-212AC	DUST CAP	
7	M83723/75R1212N	CONNECTOR	
8	M83723/75R1057	CONNECTOR	
9	M83723/59-210AC	DUST CAP	
A33003-387 CABLE ASSEMBLY			
6	M83723/59-214AC	DUST CAP	
7	M83723/75R1415N	CONNECTOR	
8	M83723/75R1056	CONNECTOR	
9	M83723/59-210AC	DUST CAP	
A33003-405 CABLE ASSEMBLY			
6	M83723/59-222AC	DUST CAP	
7	M83723/75A2255N	CONNECTOR	
8	MS27473T18B53S	CONNECTOR	
9	MS27510B18C	DUST CAP	
A33003-407 CABLE ASSEMBLY			
6	M83723/59-218AR	DUST CAP	
7	M83723/75A1831N	CONNECTOR	
8	M83723/76A1831N	CONNECTOR	
9	M83723/59-218AR	DUST CAP	

Multipurpose Breakout Box  
Figure 1 (Sheet 13 of 13)

## ILLUSTRATED TOOL AND EQUIPMENT MANUAL

**PART NUMBER: A33001-1****NAME:** TEST BOX - MASTER DIM AND TEST PRINTED CIRCUIT (PC) CARD**AIRPLANE MAINTENANCE:** NO**COMPONENT MAINTENANCE:** YES**USAGE & DESCRIPTION:** The A33001 drawing has been transferred to BAE Systems and will no longer be revised by Boeing. The A33001 inclusion in the 757 ITEM is for information and historical purposes only.

The A33001-1 test box is used during component maintenance on all 757 airplanes. A33001 is used to functionally test and trouble shoot the master dim and test ground seeking printed circuit card assembly 285T0097. Refer to CMM 33-16-04 for complete usage instructions. A33001-1 consists of banana jacks, resistors, a connector, switches, and electrical circuitry mounted on a panel and chassis assembly.

**WEIGHT:** 2 lbs (0.9 kg)**DIMENSIONS:** 2 x 6 x 8 inches (51 x 152 x 203 mm)

**Master Dim And Test PC Card Test Box  
Figure 1**



757

ILLUSTRATED TOOL AND EQUIPMENT MANUAL

REPAIRABLE/REPLACEABLE PARTS			
ITEM NO.	PART NO.	NOMENCLATURE	VENDOR CODE
1	300055-003	CONNECTOR	V03877
2	0312	RHEOSTAT	V44655