

CHAPTER

36

PNEUMATIC POWER



757
ILLUSTRATED TOOL AND EQUIPMENT MANUAL

CHAPTER 36
PNEUMATIC POWER

Subject/Page	Date	Subject/Page	Date	Subject/Page	Date
EFFECTIVE PAGES		36-10-05 (cont)			
1	Sep 20/2008	2	Sep 20/2006		
2	BLANK	36-10-06			
36-CONTENTS		1	Sep 20/2006		
1	Sep 20/2006	2	Sep 20/2006		
2	BLANK	3	Sep 20/2006		
36-00-01		4	BLANK		
1	Sep 20/2006	36-10-07			
2	Sep 20/2007	1	Sep 20/2006		
3	Sep 20/2007	2	Sep 20/2006		
4	BLANK	3	Sep 20/2006		
36-00-02		4	BLANK		
1	Sep 20/2006	36-10-08			
2	Sep 20/2007	1	Sep 20/2006		
36-00-03		2	Sep 20/2006		
1	Sep 20/2006	3	Sep 20/2006		
2	Sep 20/2006	4	BLANK		
36-00-04		36-10-09			
1	Sep 20/2006	1	Sep 20/2006		
2	Sep 20/2006	2	Sep 20/2006		
3	Sep 20/2006	3	Sep 20/2006		
4	Sep 20/2006	4	BLANK		
36-10-01		36-10-10			
1	Sep 20/2006	1	Sep 20/2007		
2	Sep 20/2006	2	Sep 20/2007		
36-10-02		3	Sep 20/2006		
1	Sep 20/2006	4	Sep 20/2006		
2	Sep 20/2006	5	Sep 20/2006		
3	Sep 20/2006	6	Sep 20/2006		
4	Sep 20/2006	36-10-11			
36-10-03		1	Sep 20/2006		
1	Sep 20/2006	2	Sep 20/2006		
2	Sep 20/2006	3	Sep 20/2006		
3	Sep 20/2006	4	BLANK		
4	BLANK				
36-10-04					
1	Sep 20/2006				
2	Sep 20/2006				
36-10-05					
1	Sep 20/2006				

A = Added, R = Revised, O = Overflow, D = Deleted

36-EFFECTIVE PAGES



757

ILLUSTRATED TOOL AND EQUIPMENT MANUAL

TABLE OF CONTENTS

<u>Subject</u>	<u>Title</u>	<u>Part No.</u>
36-	PNEUMATIC POWER	
36-00-01	PLATFORM - PRECOOLER, INSTALLATION AND REMOVAL, RB211 ENGINE	B36001-1
36-00-02	REMOVAL/INSTALLATION EQUIPMENT - ENGINE PRECOOLER	A36001-51
36-00-03	REMOVAL/INSTALLATION EQUIPMENT - PRECOOLER, RB211- 535 ENGINES	B36007-1
36-00-04	REMOVAL/INSTALLATION EQUIPMENT - PRECOOLER, PW2000 ENGINE	B36008-1
36-10-01	PLUG EQUIPMENT - AIR CONDITIONING SYSTEM	B36002-1
36-10-02	LEVERAGE EQUIPMENT - INSTALLATION/REMOVAL, PNEUMATIC DUCT, ENGINE STRUT	B36003-1
36-10-03	PLUG EQUIPMENT - PRESSURE TEST, LOW PRESSURE DUCTS	B36004-1
36-10-04	PLUG EQUIPMENT - DUCT TEST	G36006-1, -2, -4, -5, -6
36-10-05	PLUG EQUIPMENT - DUCT TEST, JANITROL 12J08 FLANGED DUCTS	G36013-3, -6
36-10-06	PLUG EQUIPMENT - DUCT TEST (MS33660, TYPE A BEAD)	G36015-8
36-10-07	PLUG EQUIPMENT - DUCT TEST (20° MACHINED FLANGES)	G36020-34
36-10-08	PLUG EQUIPMENT - DUCT TEST	B36005-2, -3, -4
36-10-09	PRESSURE TEST EQUIPMENT - DUCT ASSEMBLY	A36014-1
36-10-10	TEST EQUIPMENT - ENGINE BLEED AIR SYSTEMS	C36001-44
36-10-11	PRESSURE TEST PLUG - DUCT ASSEMBLY	A36016-1

36-CONTENTS

Page 1
Sep 20/2006

D634N501



757

ILLUSTRATED TOOL AND EQUIPMENT MANUAL

PART NUMBER: B36001-1

NAME: PLATFORM - PRECOOLER, INSTALLATION AND REMOVAL, RB211 ENGINE

AIRPLANE MAINTENANCE: YES

COMPONENT MAINTENANCE: NO

USAGE & DESCRIPTION: The B36001-1 platform is used on 757-200, -200 combi and -200 freighters equipped with RB211-535 engines. B36001 provides a sliding surface for removal or installation of the engine strut precooler. When correctly installed, B36001 also protects the air conditioning duct bellows and the fire extinguisher line during precooler maintenance procedures. Refer to AMM 36-11-15 for complete usage instructions.

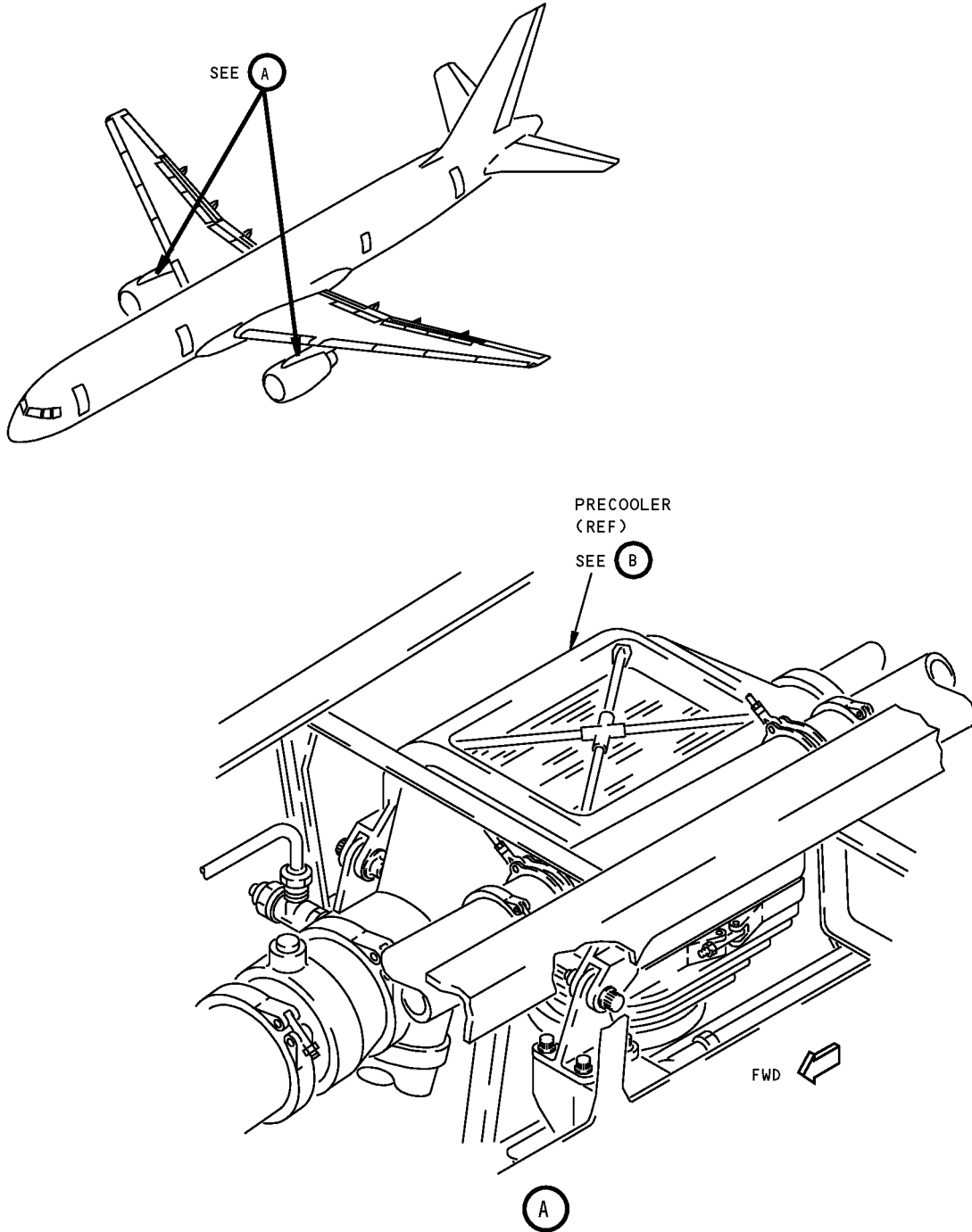
B36001-1 consists of:

B36001-1		
QUANTITY	NOMENCLATURE	PART NUMBER
1	PLATE	B36001-2
1	LANYARD	CL-22-KA-8.0LR
2	SCREW	NAS603-9P

WEIGHT: 9 lbs (4.1 kg)

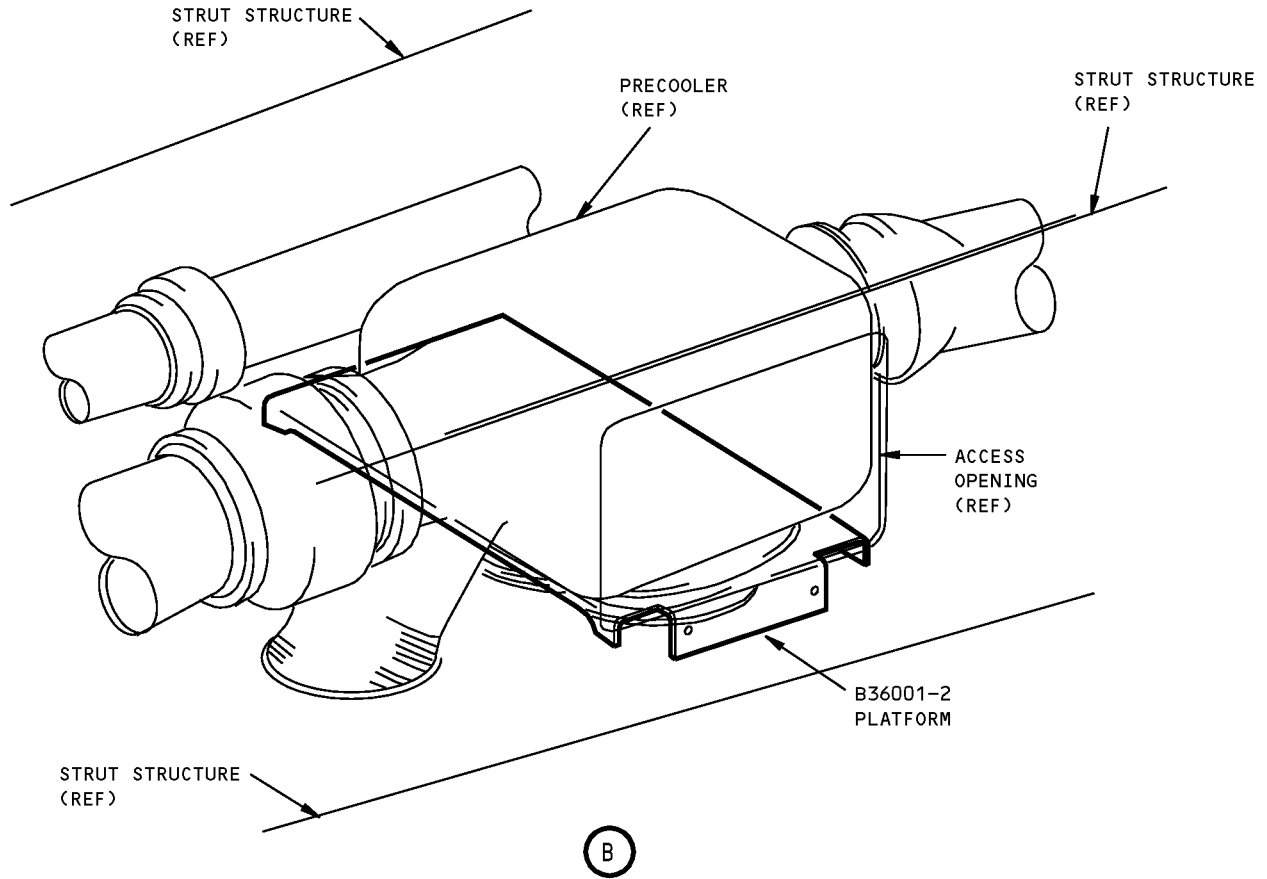
DIMENSIONS: 3 x 13 x 19 inches (76 x 330 x 483 mm)

**757
ILLUSTRATED TOOL AND EQUIPMENT MANUAL**



**RB211 Engine Precooler Installation and Removal Platform
Figure 1 (Sheet 1 of 2)**

**757
ILLUSTRATED TOOL AND EQUIPMENT MANUAL**



**RB211 Engine Precooler Installation and Removal Platform
Figure 1 (Sheet 2 of 2)**



757

ILLUSTRATED TOOL AND EQUIPMENT MANUAL

PART NUMBER: A36001-51

NAME: REMOVAL/INSTALLATION EQUIPMENT - ENGINE PRECOOLER

AIRPLANE MAINTENANCE: YES

COMPONENT MAINTENANCE: NO

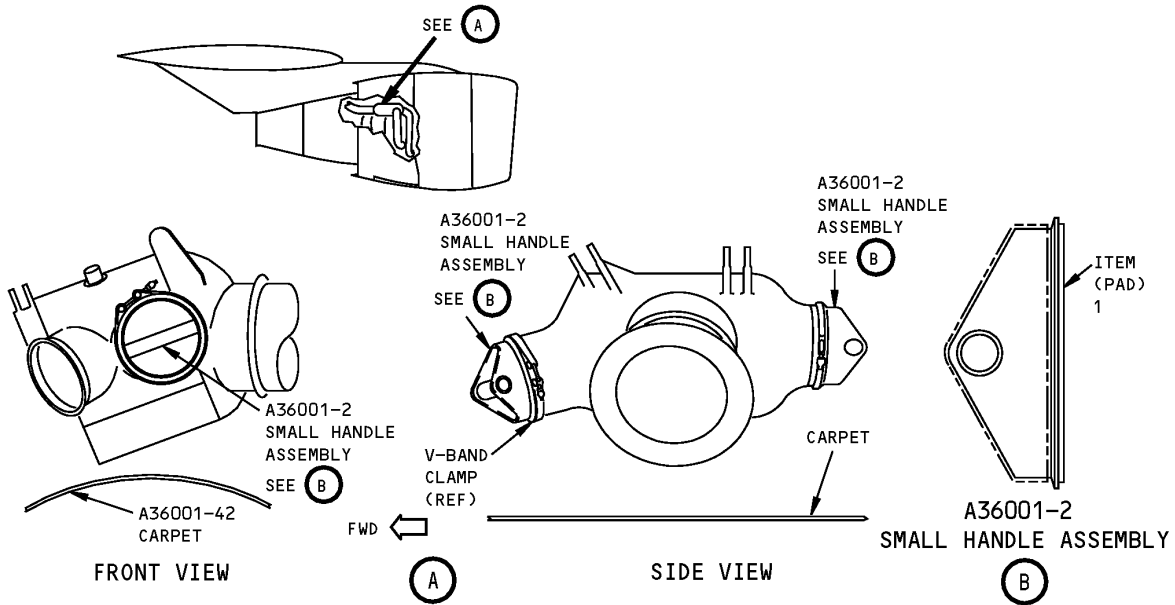
USAGE & DESCRIPTION: The A36001-51 removal/installation equipment is used on 757 airplanes equipped with PW2037 engines. A36001 is used to remove or install the PW2037 engine precooler. A36001 includes handles that fit into support provisions in the precooler and are secured with V-band clamps. The handles are used with a carpet to lift the precooler into or out of its mounting position on the engine. A36001-51 consists of:

A36001-51		
QUANTITY	NOMENCLATURE	PART NUMBER
3	SMALL HANDLE ASSEMBLY	A36001-2
1	CARPET	A36001-42
1	STORAGE BOX	

WEIGHT: 7 lbs (3.2 kg)

DIMENSIONS: 4 x 9 x 18 inches (102 x 229 x 457 mm)

ILLUSTRATED TOOL AND EQUIPMENT MANUAL



**Engine Pre-cooler Removal/Installation Equipment
Figure 1**

REPAIRABLE/REPLACEABLE PARTS			
ITEM NO.	PART NO.	NOMENCLATURE	VENDOR CODE
1	A36001-12	PAD	V82247



757

ILLUSTRATED TOOL AND EQUIPMENT MANUAL

PART NUMBER: B36007-1

NAME: REMOVAL/INSTALLATION EQUIPMENT - PRECOOLER, RB211-535 ENGINES

AIRPLANE MAINTENANCE: YES

COMPONENT MAINTENANCE: NO

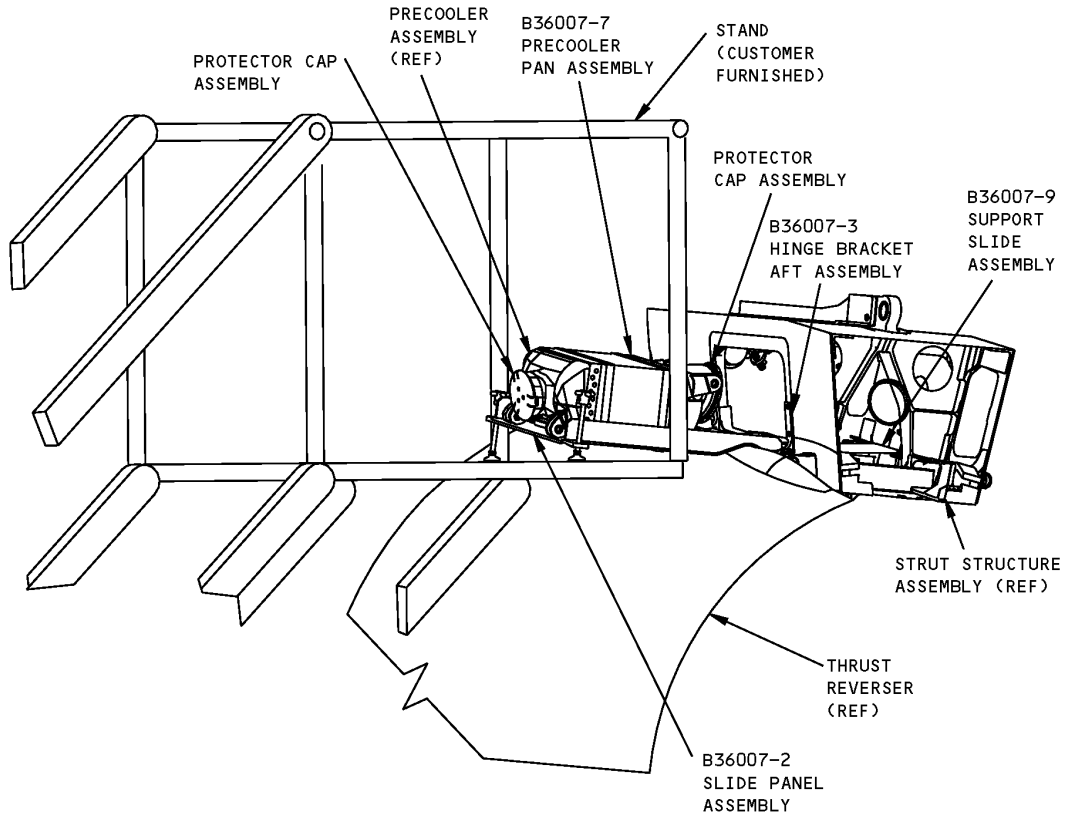
USAGE & DESCRIPTION: B36007-1 removal/installation equipment is used on 757-300 airplanes equipped with RB211-535 engines. B36007 is used to remove or install the engine precooler. Refer to AMM 36-11-15 for complete usage instructions. B36007-1 consists of:

B36007-1		
QUANTITY	NOMENCLATURE	PART NUMBER
1	SLIDE PANEL ASSEMBLY	B36007-2
1	HINGE BRACKET AFT ASSEMBLY	B36007-3
1	HINGE BRACKET AFT ASSEMBLY (OPP -3)	B36007-4
1	HINGE BRACKET FORWARD ASSEMBLY	B36007-5
1	HINGE BRACKET FORWARD ASSEMBLY (OPP -5)	B36007-6
1	PRECOOLER PAN ASSEMBLY	B36007-7
1	SLIDE PANEL ASSEMBLY	B36007-8
1	SUPPORT SLIDE ASSEMBLY	B36007-9
1	PROTECTOR CAP ASSEMBLY	B36007-10
2	PROTECTOR CAP ASSEMBLY	B36007-11
4	LONG SCREW WASHER ASSEMBLY	B36007-12
2	SHORT SCREW WASHER ASSEMBLY	B36007-13
2	PRYBAR	B36007-41
2	ADJUSTMENT BAR	B36007-42
1	STORAGE BOX	

WEIGHT: 75 lbs (34 kg)

DIMENSIONS: 15 x 25 x 55 inches (381 x 635 x 1397 mm)

ILLUSTRATED TOOL AND EQUIPMENT MANUAL



PRECOOLER REMOVAL OR INSTALLATION

RB211-535 Engines Precooler Removal/Installation Equipment
Figure 1



757

ILLUSTRATED TOOL AND EQUIPMENT MANUAL

PART NUMBER: B36008-1

NAME: REMOVAL/INSTALLATION EQUIPMENT - PRECOOLER, PW2000 ENGINE

AIRPLANE MAINTENANCE: YES

COMPONENT MAINTENANCE: NO

USAGE & DESCRIPTION: The B36008-1 removal/installation equipment is used on 757-300 airplanes equipped with PW2000 engines. B36008 is used with a customer-furnished boom hoist to remove and install the 757-300 PW2000 engine-precooler. Refer to the current B36008 drawing and AMM 36-11-15 for complete usage instructions. The precooler equipment consists of:

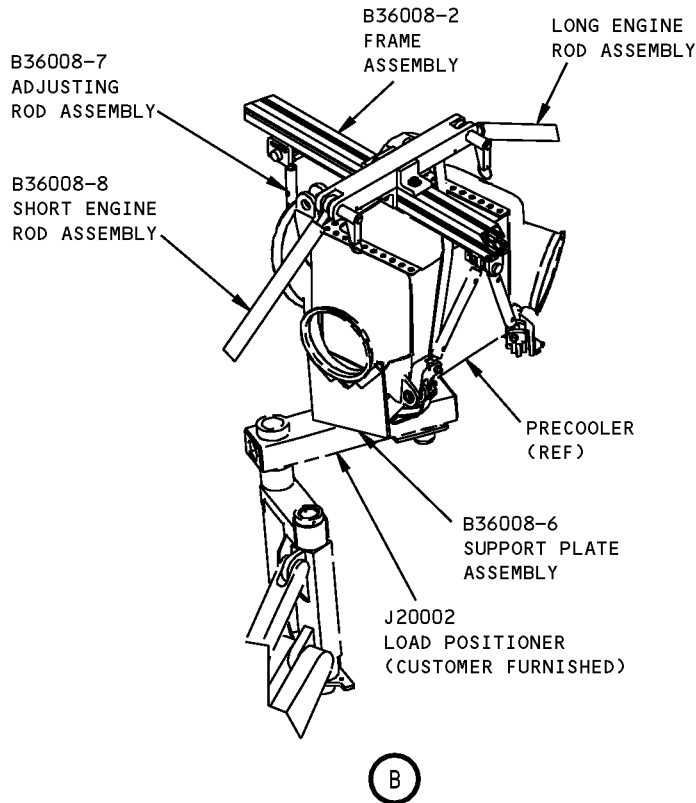
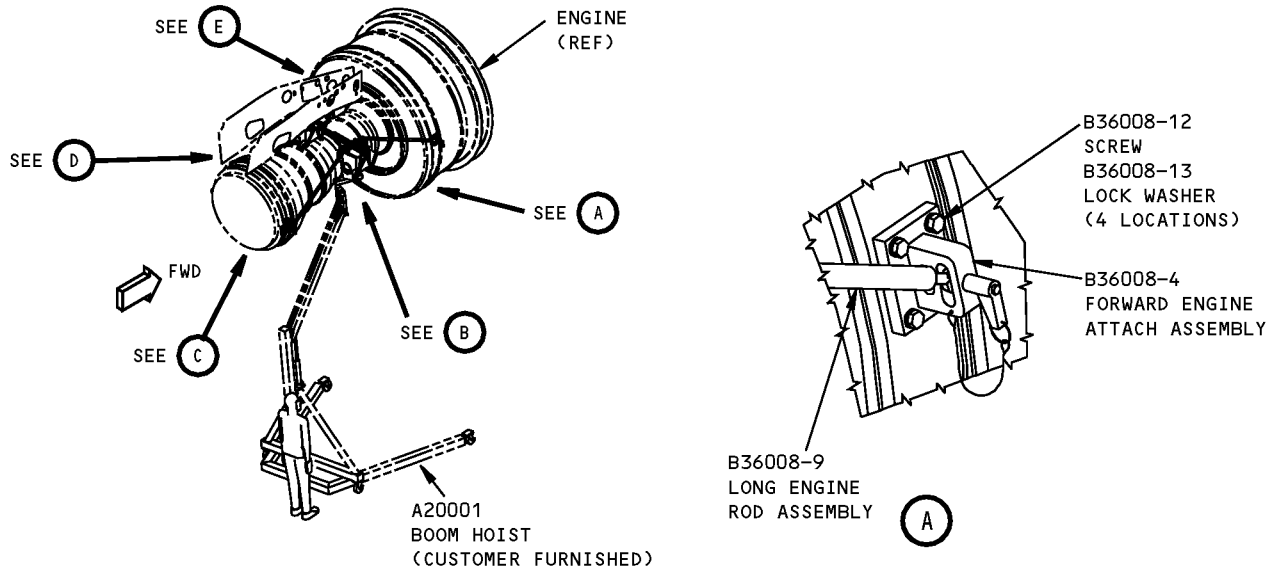
B36008-1		
QUANTITY	NOMENCLATURE	PART NUMBER
1	FRAME ASSEMBLY	B36008-2
1	CLEVIS ASSEMBLY	B36008-3
1	FORWARD ENGINE ATTACH ASSEMBLY	B36008-4
1	AFT ENGINE ATTACH ASSEMBLY	B36008-5
1	SUPPORT PLATE ASSEMBLY	B36008-6
1	ADJUSTING ROD ASSEMBLY	B36008-7
1	SHORT ENGINE ROD ASSEMBLY	B36008-8
1	LONG ENGINE ROD ASSEMBLY	B36008-9
1	END CAP ASSEMBLY	B36008-10
4	SCREW	B36008-12 ^[1]
4	LOCK WASHER	B36008-13
2	SHOULDER BOLT	B36008-14
2	LOCK NUT	B36008-15
1	STORAGE BOX	

*[1] NAS6608-12 IS OPTIONAL TO B36008-12.

WEIGHT: 65 lbs (29 kg)

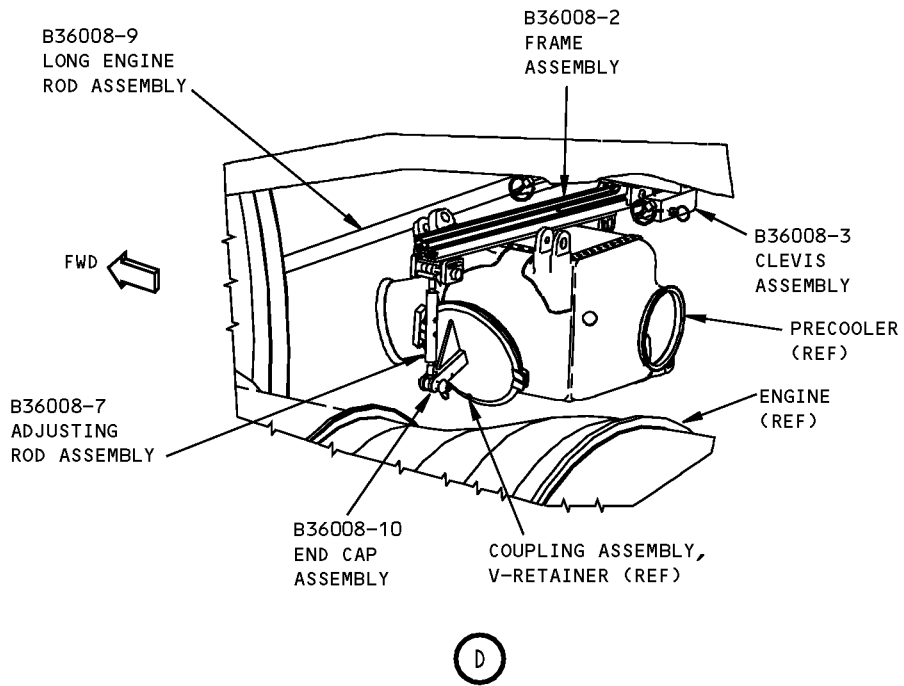
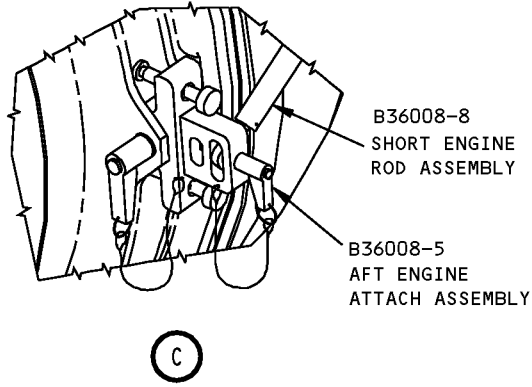
DIMENSIONS: 20 x 26 x 60 inches (508 x 660 x 1524 mm)

ILLUSTRATED TOOL AND EQUIPMENT MANUAL



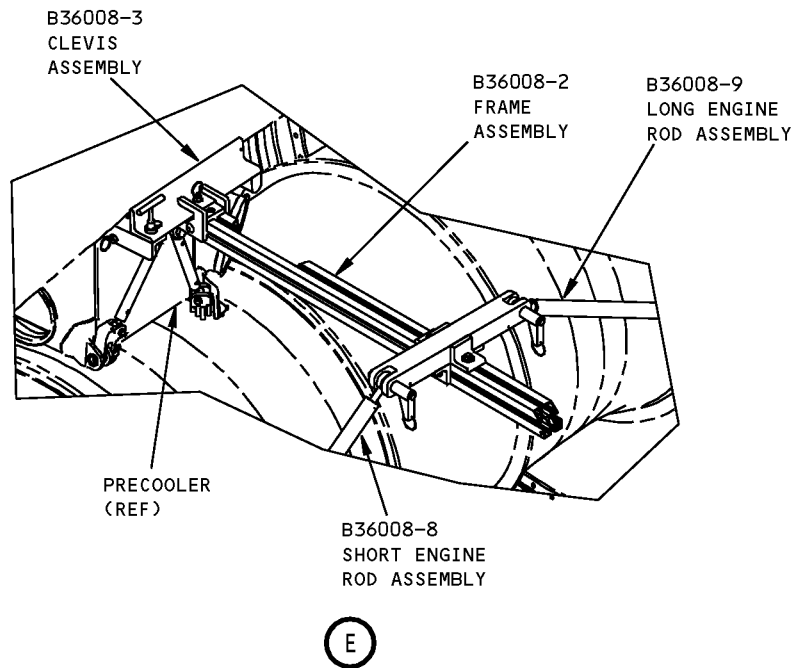
**PW2000 Engine Precooler Removal/Installation Equipment
Figure 1 (Sheet 1 of 3)**

ILLUSTRATED TOOL AND EQUIPMENT MANUAL



**PW2000 Engine Precooler Removal/Installation Equipment
Figure 1 (Sheet 2 of 3)**

ILLUSTRATED TOOL AND EQUIPMENT MANUAL



**PW2000 Engine Precooler Removal/Installation Equipment
Figure 1 (Sheet 3 of 3)**



757

ILLUSTRATED TOOL AND EQUIPMENT MANUAL

PART NUMBER: B36002-1

NAME: PLUG EQUIPMENT - AIR CONDITIONING SYSTEM

AIRPLANE MAINTENANCE: YES

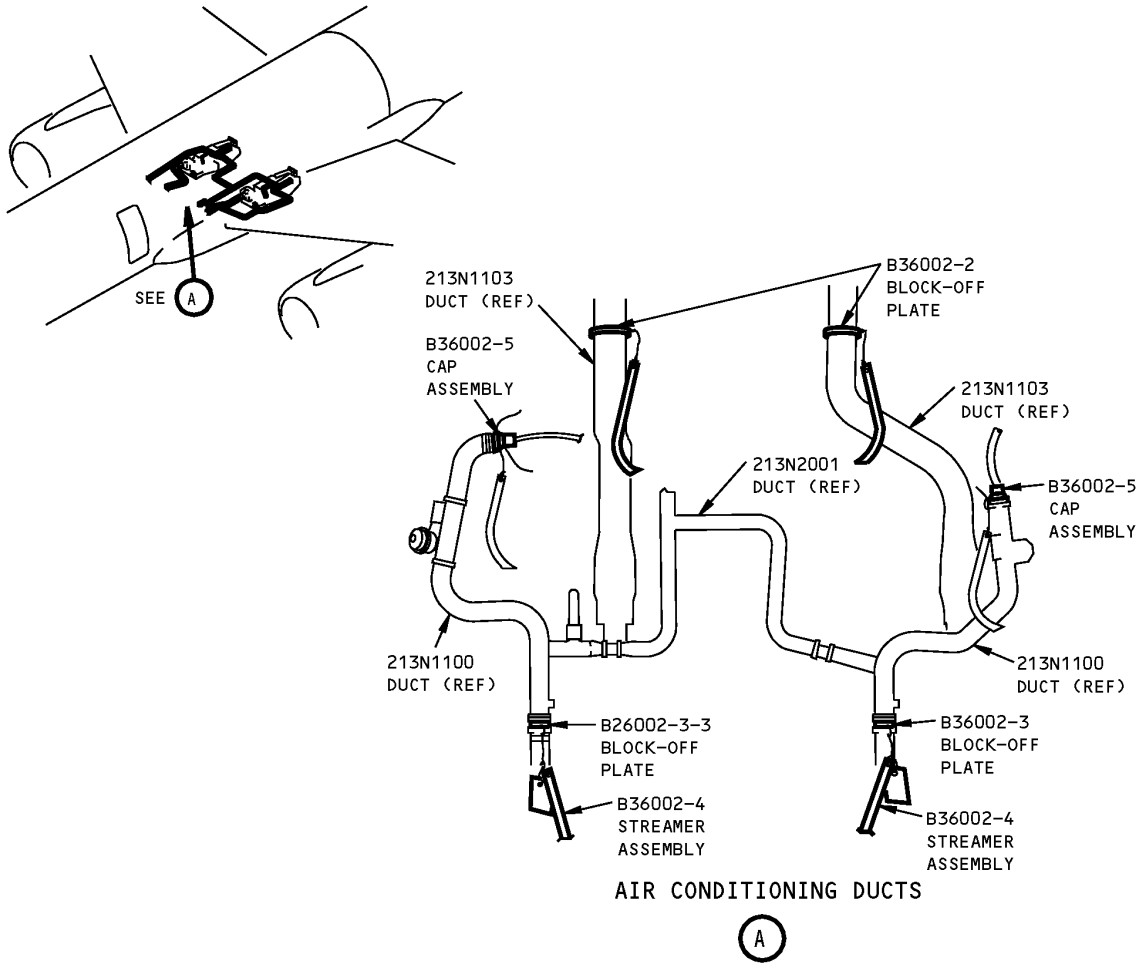
COMPONENT MAINTENANCE: NO

USAGE & DESCRIPTION: The B36002-1 plug equipment is used on all 757 airplanes. B36002 is used during air conditioning pack pressure and leakage tests. The B36002 cap assemblies and block-off plates seal certain ducts to prevent airflow during testing. Refer to the current B36002 drawing and AMM 36-11-00 for complete usage information. B36002-1 consists of:

B36002-1		
QUANTITY	NOMENCLATURE	PART NUMBER
2	BLOCK-OFF PLATE ASSEMBLY	B36002-2
2	BLOCK-OFF PLATE ASSEMBLY	B36002-3
2	STREAMER ASSEMBLY	B36002-4
2	CAP ASSEMBLY	B36002-5
1	STORAGE BOX	

WEIGHT: 10 lbs (4.5 kg)

DIMENSIONS: 15 x 20 x 25 inches (381 x 508 x 635 mm)



**Air Conditioning System Plug Equipment
Figure 1**



757

ILLUSTRATED TOOL AND EQUIPMENT MANUAL

PART NUMBER: B36003-1

NAME: LEVERAGE EQUIPMENT - INSTALLATION/REMOVAL, PNEUMATIC DUCT, ENGINE STRUT

AIRPLANE MAINTENANCE: YES

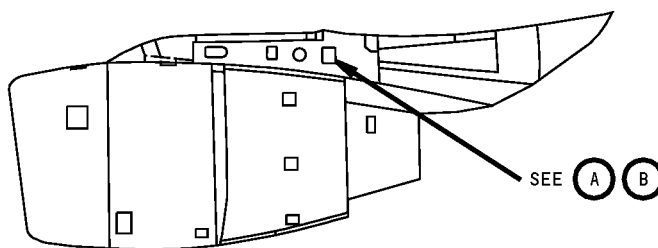
COMPONENT MAINTENANCE: NO

USAGE & DESCRIPTION: The B36003-1 leverage equipment is used on 757 airplanes equipped with RB211 engines. B36003 is used to provide a secure hold and leverage to pull the flange of the 312N5301 pneumatic duct to mate with the flange of the pressure regulation and shut-off valve (PRSOV). Refer to AMM 36-11-09 for complete usage instructions. B36003-1 consists of:

B36003-1		
QUANTITY	NOMENCLATURE	PART NUMBER
1	LEVER ARM ASSEMBLY	B36003-2
1	REVERSER ASSEMBLY	B36003-5
1	WRENCH ASSEMBLY	B36003-8
1	STORAGE BOX	

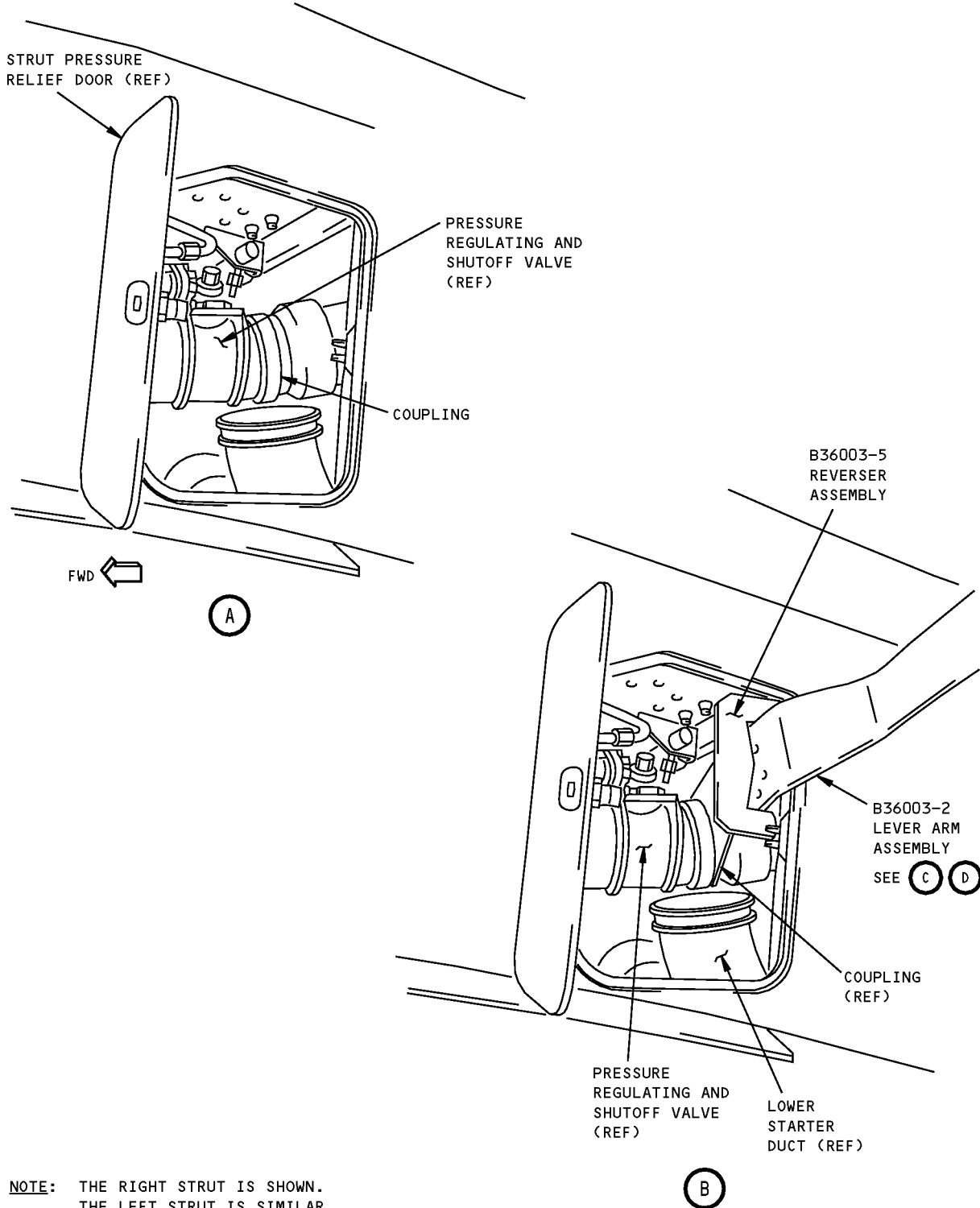
WEIGHT: 20 lbs (9 kg)

DIMENSIONS: 6 x 15 x 28 inches (152 x 381 x 711 mm)



**Engine Strut Pneumatic Duct Installation/Removal Leverage Equipment
Figure 1 (Sheet 1 of 4)**

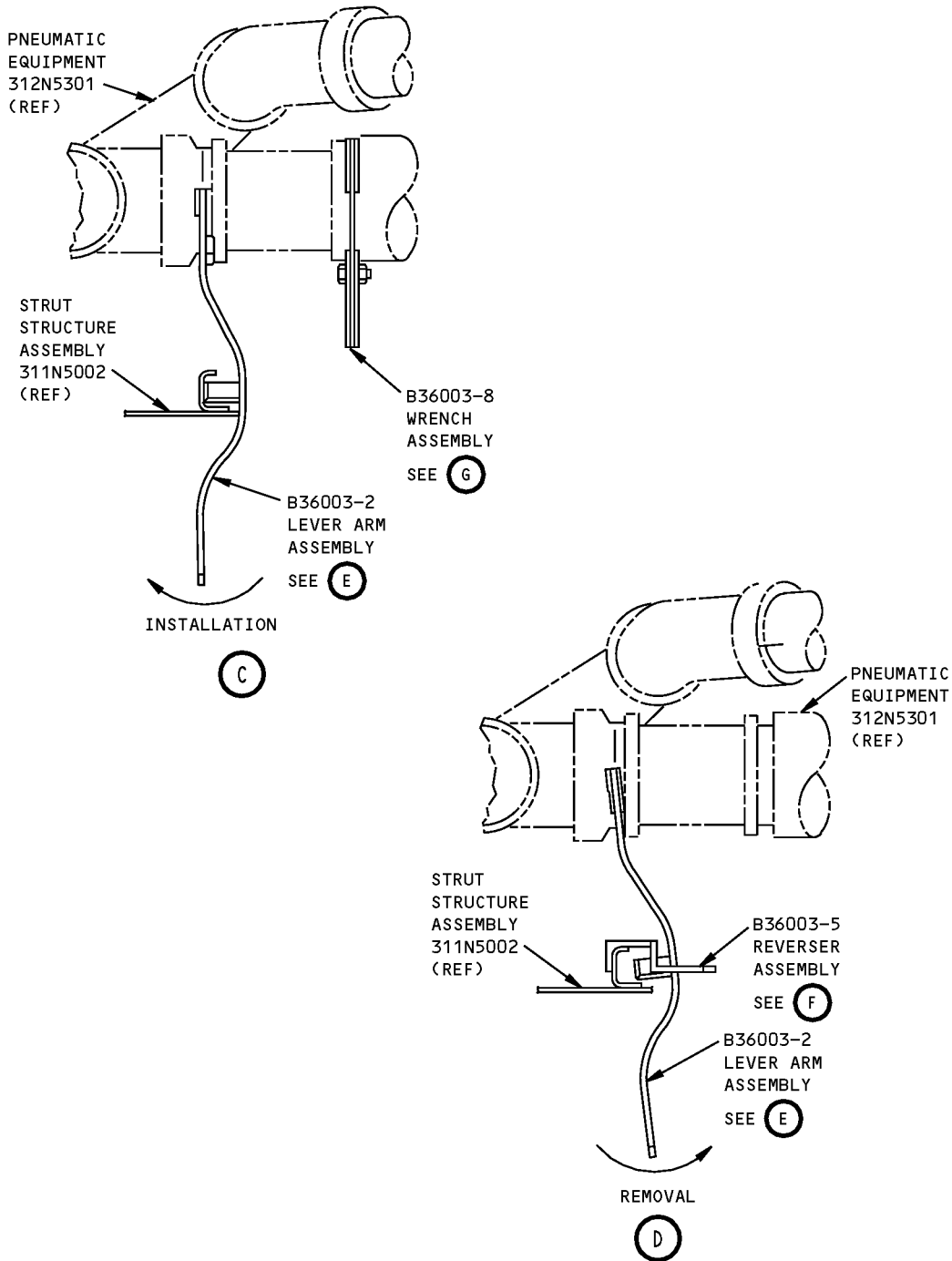
**757
ILLUSTRATED TOOL AND EQUIPMENT MANUAL**



NOTE: THE RIGHT STRUT IS SHOWN.
THE LEFT STRUT IS SIMILAR

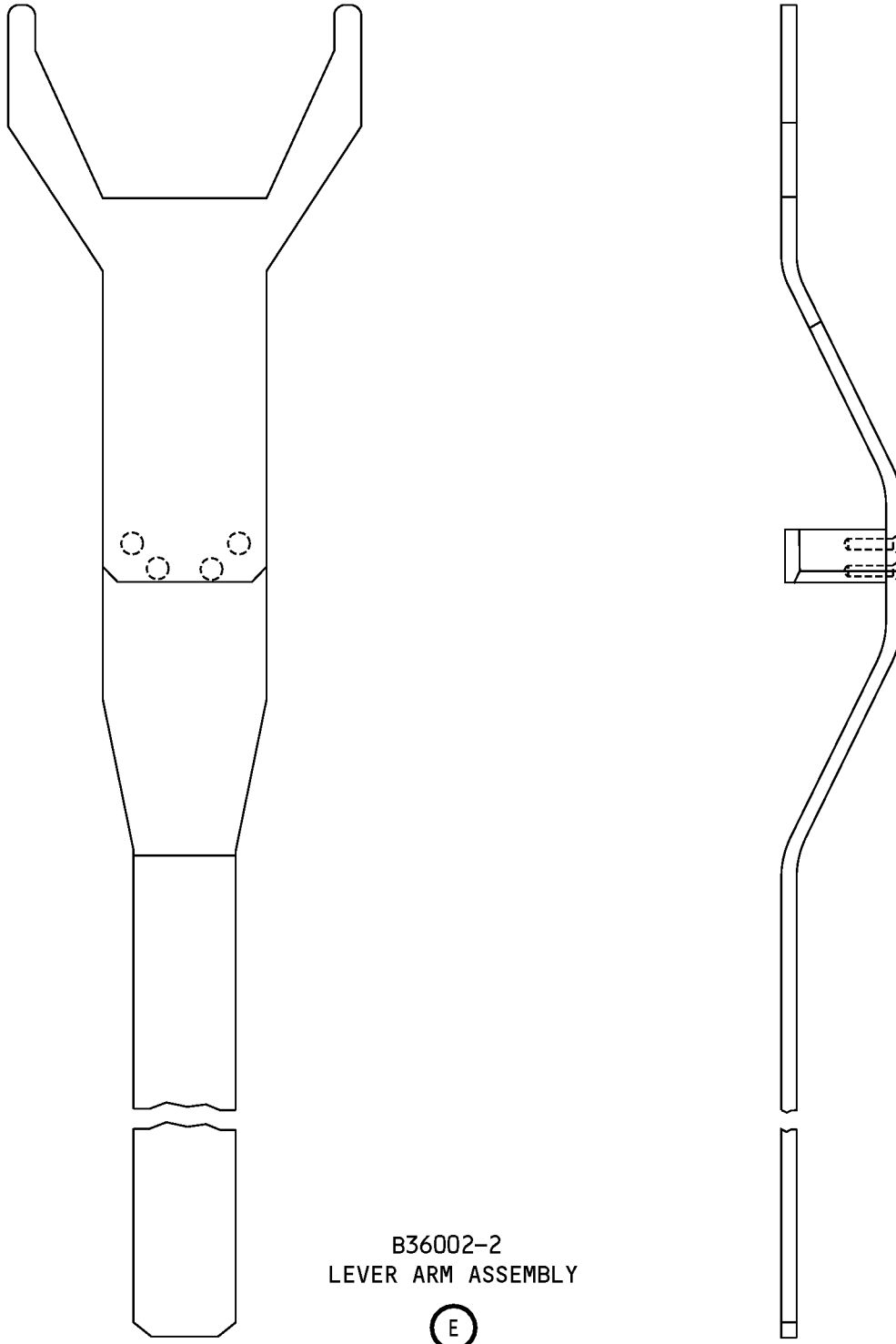
**Engine Strut Pneumatic Duct Installation/Removal Leverage Equipment
Figure 1 (Sheet 2 of 4)**

ILLUSTRATED TOOL AND EQUIPMENT MANUAL



**Engine Strut Pneumatic Duct Installation/Removal Leverage Equipment
Figure 1 (Sheet 3 of 4)**

ILLUSTRATED TOOL AND EQUIPMENT MANUAL



B36002-2
LEVER ARM ASSEMBLY

(E)

**Engine Strut Pneumatic Duct Installation/Removal Leverage Equipment
Figure 1 (Sheet 4 of 4)**



757

ILLUSTRATED TOOL AND EQUIPMENT MANUAL

PART NUMBER: B36004-1

NAME: PLUG EQUIPMENT - PRESSURE TEST, LOW PRESSURE DUCTS

AIRPLANE MAINTENANCE: NO

COMPONENT MAINTENANCE: YES

USAGE & DESCRIPTION: The B36004-1 plug equipment is used during component maintenance on all 757 airplanes. B36004 is used during hydrostatic proof pressure testing of low pressure ducts. B36004 contains various plug and clamp assemblies that are used depending on duct diameter. B36004 is used on flange/ferrule/boss part numbers BACF22AA450 and BACF22AA600. Refer to the current B36004 drawing and CMM 36-10-05 for complete usage instructions. B36004-1 consists of:

B36004-1		
QUANTITY	NOMENCLATURE	PART NUMBER
1	PLUG EQUIPMENT	B36004-2
1	PLUG EQUIPMENT	B36004-3
1	PLUG EQUIPMENT	B36004-4
1	PLUG EQUIPMENT	B36004-5
1	PLUG EQUIPMENT	B36004-6
1	PLUG EQUIPMENT	B36004-7
1	PLUG EQUIPMENT	B36004-8
1	PLUG EQUIPMENT	B36004-9
1	PLUG EQUIPMENT	B36004-10
1	PLUG EQUIPMENT	B36004-11
1	PLUG EQUIPMENT	B36004-12
1	PLUG EQUIPMENT	B36004-13
1	PLUG EQUIPMENT	B36004-14
1	PLUG EQUIPMENT	B36004-15
1	CLAMP ASSEMBLY	B36004-32
1	CLAMP ASSEMBLY	B36004-33
1	CLAMP ASSEMBLY	B36004-34
1	CLAMP ASSEMBLY	B36004-35
1	CLAMP ASSEMBLY	B36004-36
1	CLAMP ASSEMBLY	B36004-37
1	CLAMP ASSEMBLY	B36004-38



757

ILLUSTRATED TOOL AND EQUIPMENT MANUAL

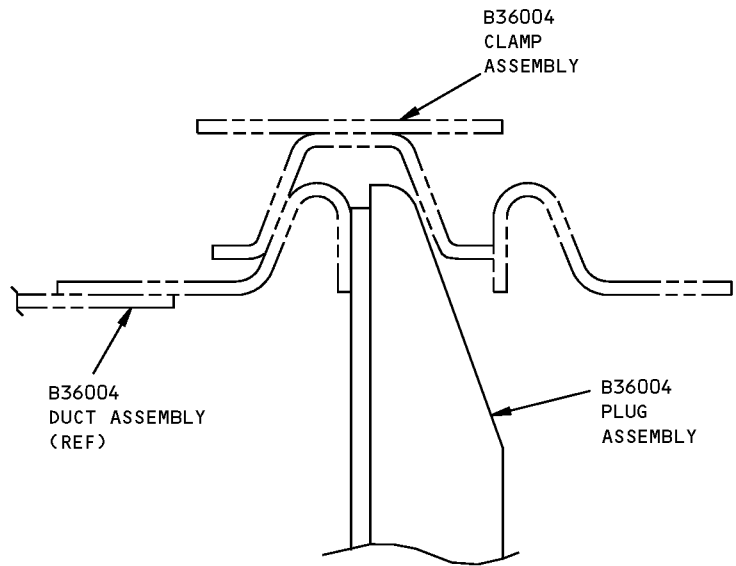
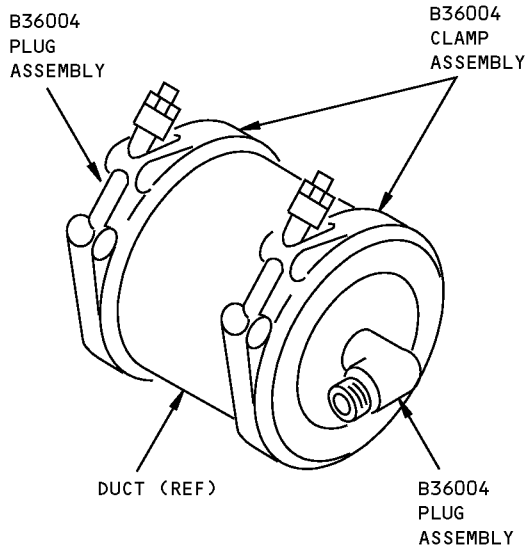
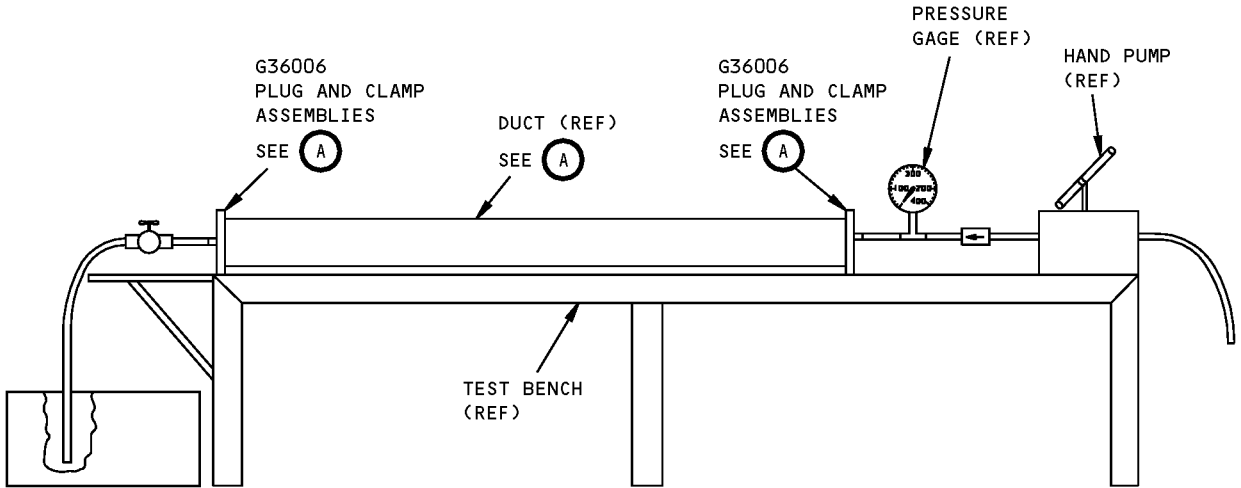
B36004-1		
QUANTITY	NOMENCLATURE	PART NUMBER
1	STORAGE BOX	

WEIGHT: 40 lbs (18 kg)

DIMENSIONS: 8 x 19 x 27 inches (203 x 483 x 686 mm)

NOTE: B36004-1 supersedes F72878-1, -2 and -3.

ILLUSTRATED TOOL AND EQUIPMENT MANUAL



A

**Low Pressure Ducts Pressure Test Plug Equipment
Figure 1**



757

ILLUSTRATED TOOL AND EQUIPMENT MANUAL

PART NUMBER: G36006-1, -2, -4, -5, -6

NAME: PLUG EQUIPMENT - DUCT TEST

AIRPLANE MAINTENANCE: NO

COMPONENT MAINTENANCE: YES

USAGE & DESCRIPTION: The G36006-1, -2, -4, -5 and -6 plug equipment is used during component maintenance on all 757 airplanes. G36006 is used during hydrostatic proof pressure testing of low pressure ducts. G36006 contains various plug and clamp assemblies that are used depending on duct diameter. G36006 is used on flange/ferrule/boss part numbers BACF22AD500 (G36006-6), BACF22AD600 (G36006-4), BACF22AN250 (G36006-5), BACF22AN300 (G36006-1), BACF22AN400 (G36006-2), BACF22AN500 (G36006-6) and BACF22AN600 (G36006-4). Refer to the current G36006 drawing and CMM 36-10-05 for complete usage instructions.

G36006-1 consists of a G36006-101 clamp assembly and a G36006-201 plug assembly, both contained in a storage box.

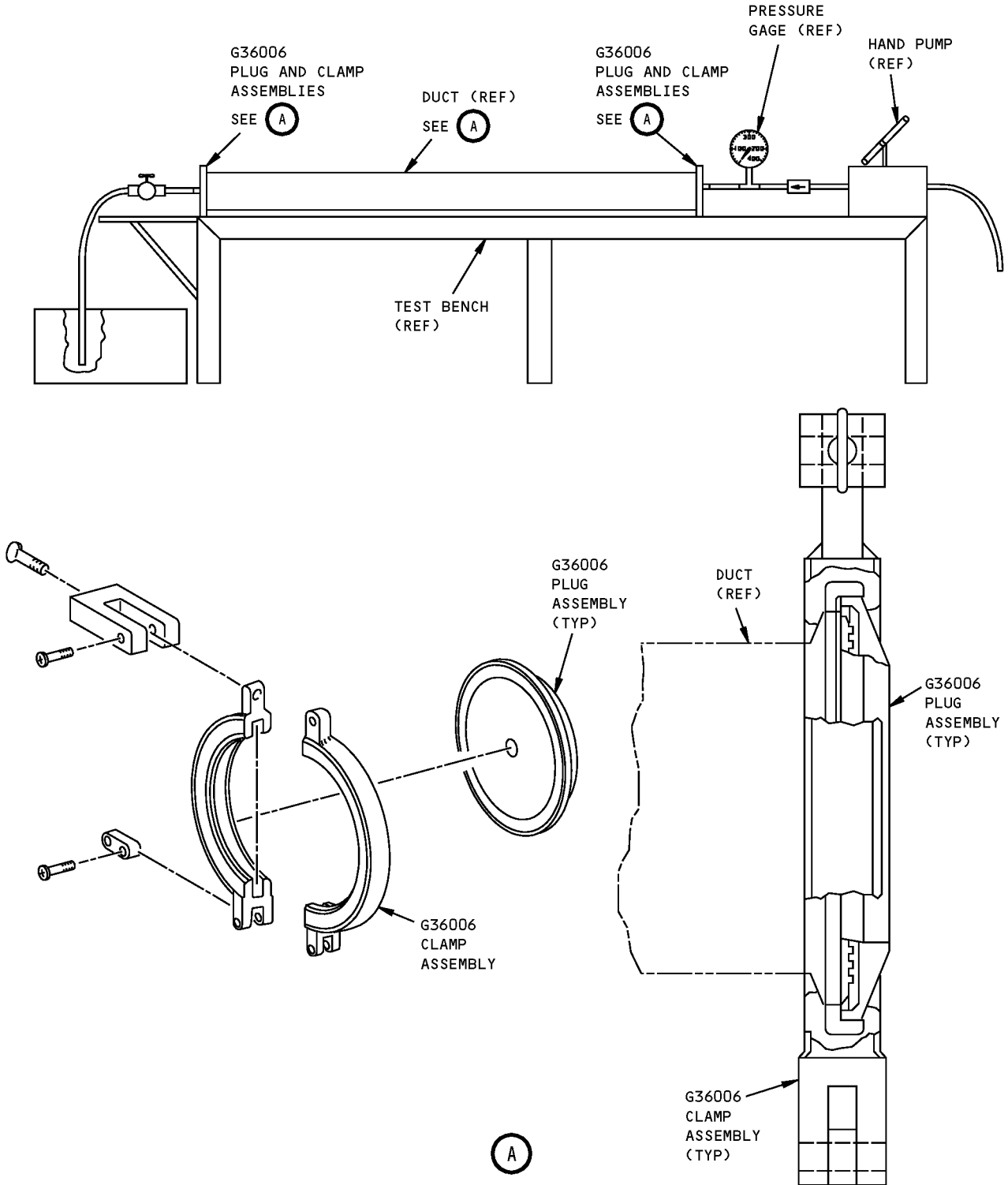
G36006-2 consists of a G36006-102 clamp assembly and a G36006-202 plug assembly, both contained in a storage box.

G36006-4 consists of a G36006-104 clamp assembly and a G36006-204 plug assembly, both contained in a storage box.

G36006-5 consists of a G36006-105 clamp assembly and a G36006-205 plug assembly, both contained in a storage box.

G36006-6 consists of a G36006-106 clamp assembly and a G36006-206 plug assembly, both contained in a storage box.

ILLUSTRATED TOOL AND EQUIPMENT MANUAL



**Duct Test Plug Equipment
Figure 1**



757

ILLUSTRATED TOOL AND EQUIPMENT MANUAL

PART NUMBER: G36013-3, -6

NAME: PLUG EQUIPMENT - DUCT TEST, JANITROL 12J08 FLANGED DUCTS

AIRPLANE MAINTENANCE: NO

COMPONENT MAINTENANCE: YES

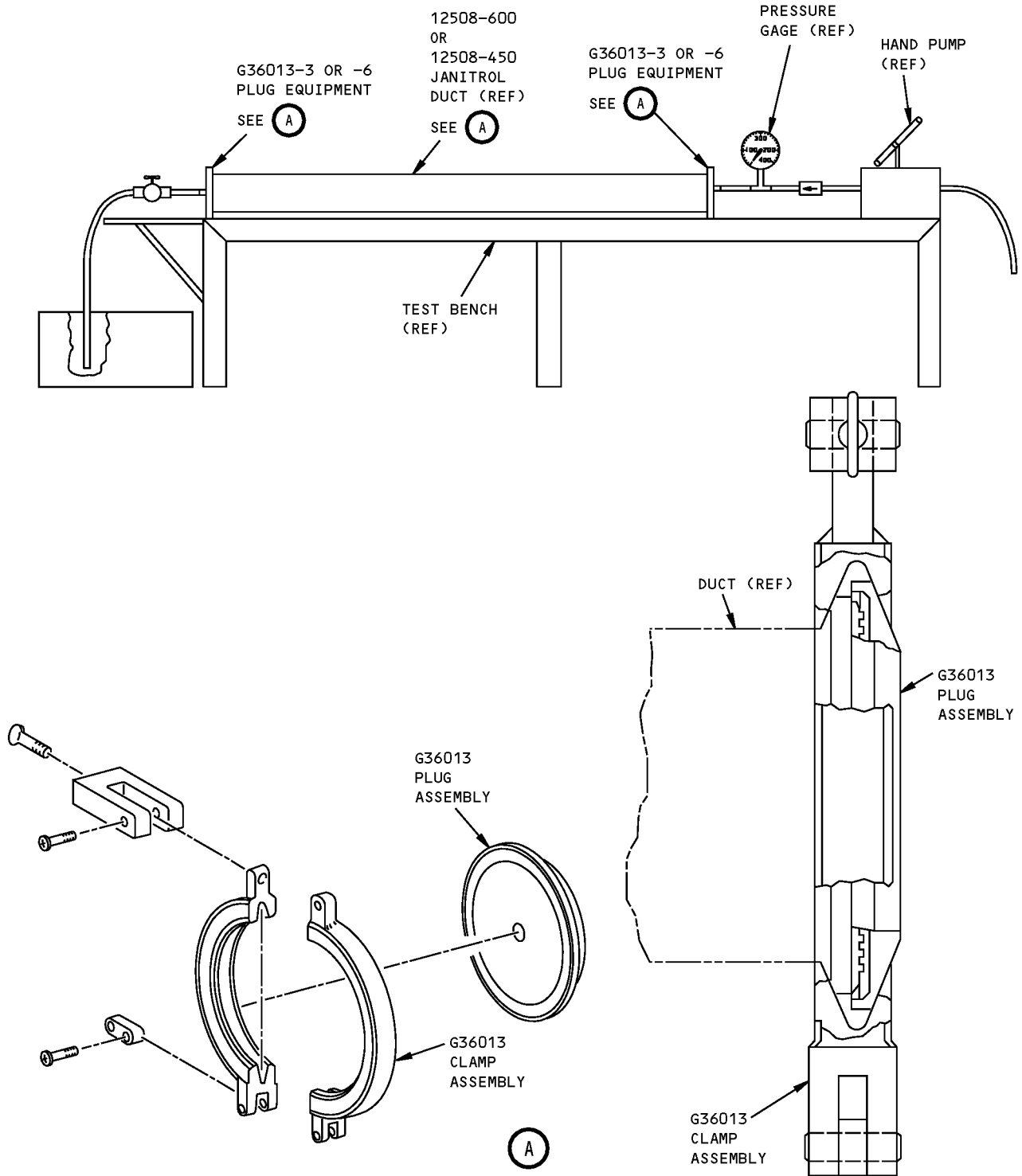
USAGE & DESCRIPTION: The G36013-3 or -6 plug equipment is used during component maintenance on all 757 airplanes. G36013 is used during hydrostatic proof pressure testing of low pressure ducts. G36013-3 contains a plug and clamp assembly that is used on ducts with Janitrol 12J08-600 flanges. G36013-6 contains a plug and clamp assembly that is used on ducts with Janitrol 12J08-450 flanges. Refer to the current G36013 drawing and CMM 36-10-05 for complete usage instructions.

G36013-3 consists of a G36013-103 clamp assembly and a G36013-203 plug assembly contained in a storage box.

G36013-6 consists of a G36013-106 clamp assembly and a G36013-206 plug assembly contained in a storage box.

NOTE: G36013-6 supersedes G36013-4.

ILLUSTRATED TOOL AND EQUIPMENT MANUAL



**Janitrol 12J08 Flanged Ducts Duct Test Plug Equipment
Figure 1**



757

ILLUSTRATED TOOL AND EQUIPMENT MANUAL

PART NUMBER: G36015-8

NAME: PLUG EQUIPMENT - DUCT TEST (MS33660, TYPE A BEAD)

AIRPLANE MAINTENANCE: NO

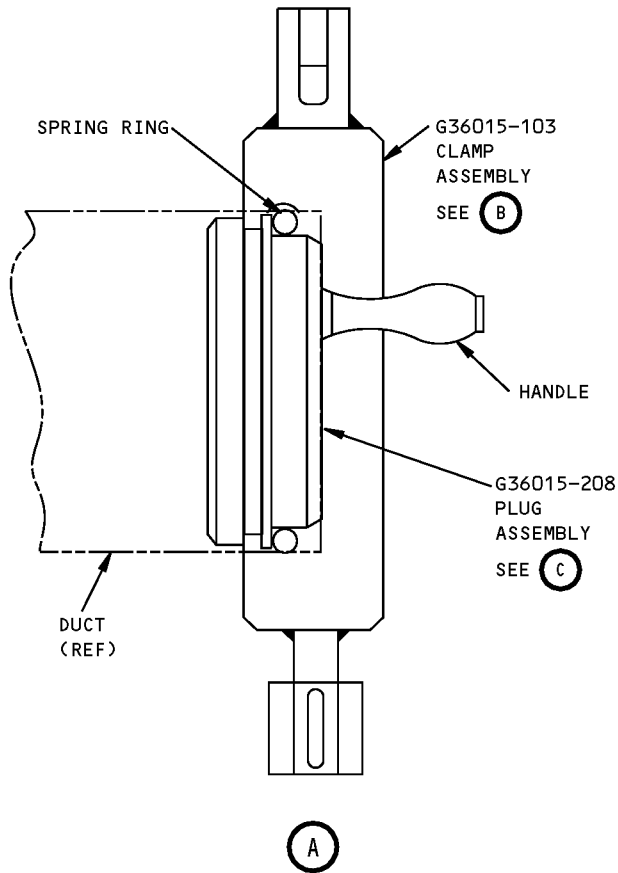
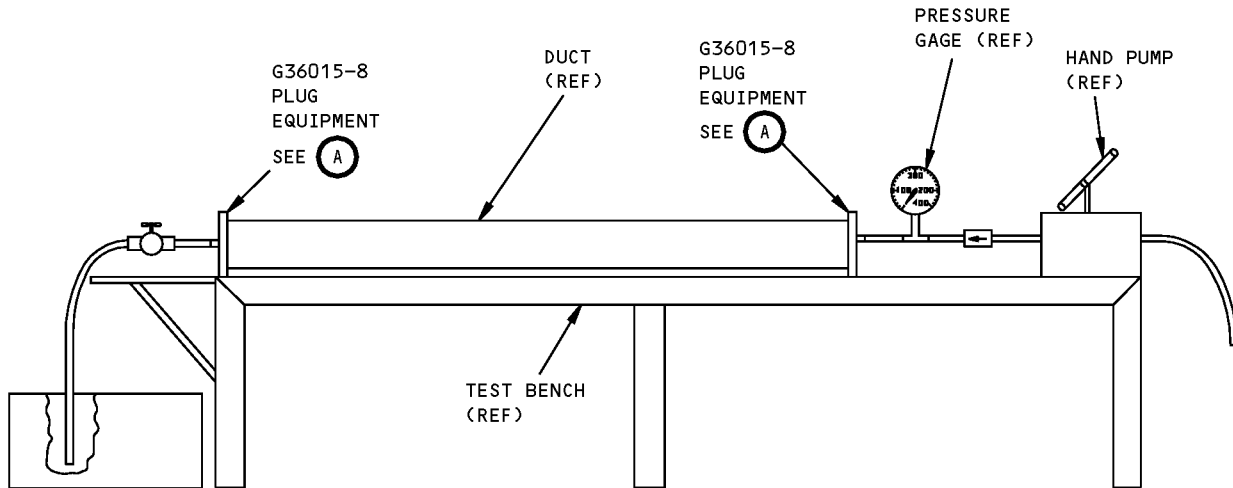
COMPONENT MAINTENANCE: YES

USAGE & DESCRIPTION: The G36015-8 plug equipment is used during component maintenance on all 757 airplanes. G36015 is used during hydrostatic proof pressure testing of low pressure ducts. G36015 contains a plug and clamp assembly that is used on ducts that have an MS33660-32 flange. Refer to the current G36015 drawing and CMM 36-10-05 for complete usage instructions. G36015-8 consists of a G36015-103 clamp assembly and a G36015-203 plug assembly, both contained in a storage box.

DIMENSIONS: 2 x 4 x 7 inches (51 x 102 x 178 mm)

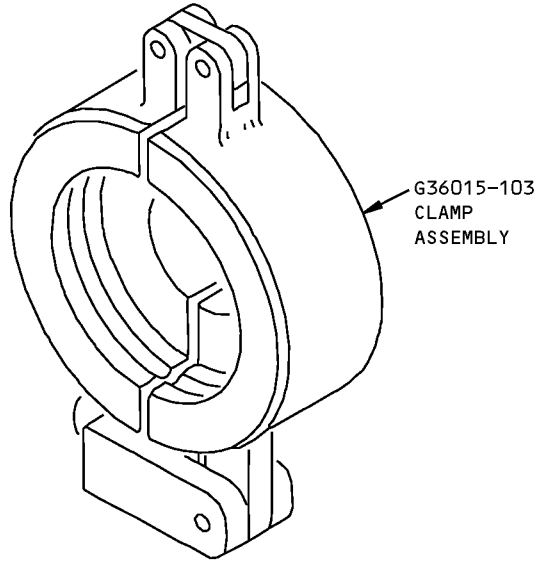
NOTE: G36015-8 supersedes G36015-7.

ILLUSTRATED TOOL AND EQUIPMENT MANUAL

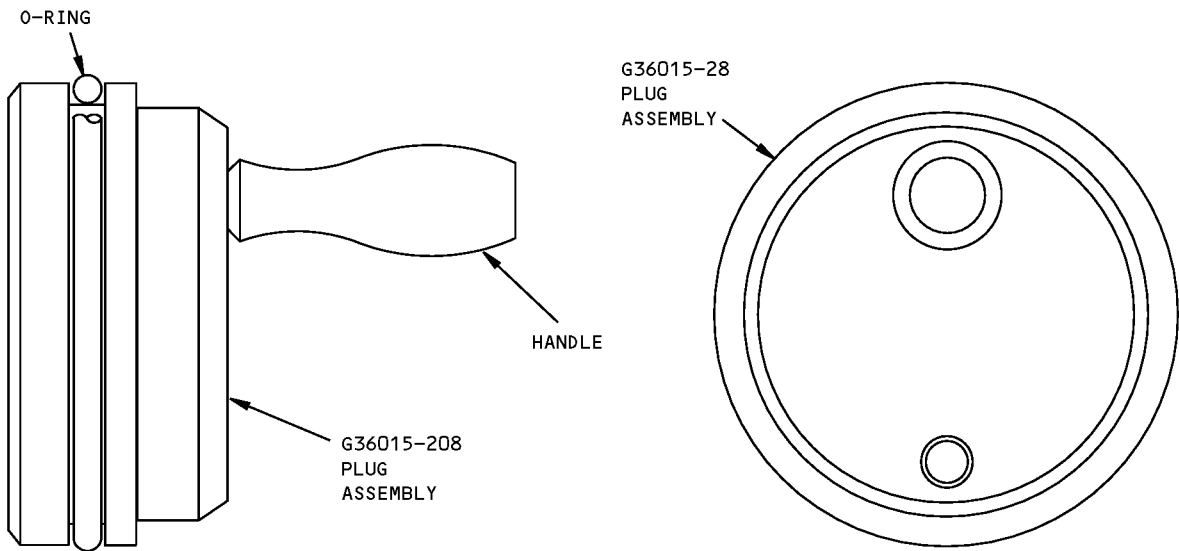


**MS33660, Type A, Bead Duct Test Plug Equipment
Figure 1 (Sheet 1 of 2)**

757
ILLUSTRATED TOOL AND EQUIPMENT MANUAL



(B)



(C)

MS33660, Type A, Bead Duct Test Plug Equipment
Figure 1 (Sheet 2 of 2)



757

ILLUSTRATED TOOL AND EQUIPMENT MANUAL

PART NUMBER: G36020-34

NAME: PLUG EQUIPMENT - DUCT TEST (20° MACHINED FLANGES)

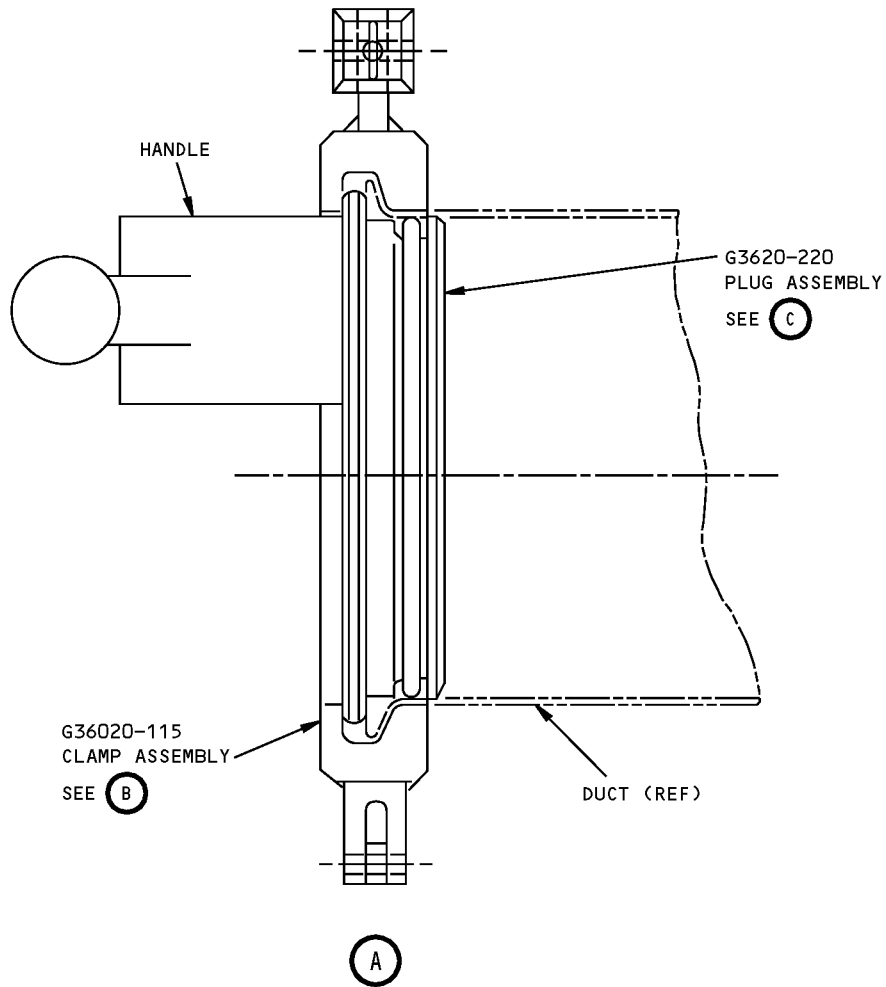
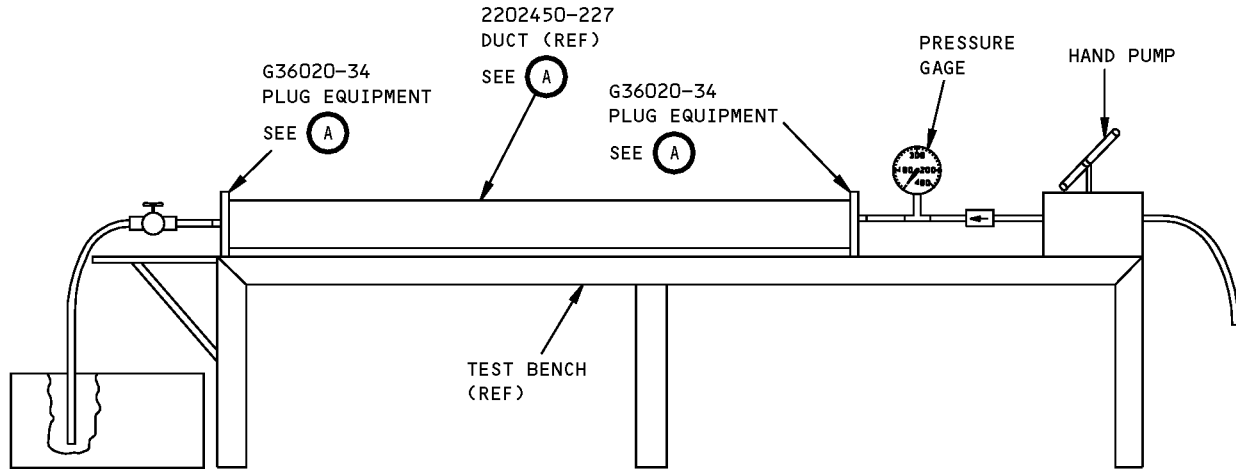
AIRPLANE MAINTENANCE: NO

COMPONENT MAINTENANCE: YES

USAGE & DESCRIPTION: The G36020-34 plug equipment is used during component maintenance on all 757 airplanes. G36020 is used during hydrostatic proof pressure testing of low pressure ducts. G36020 contains a plug and clamp assembly that is used on Garrett - AiResearch part number 2202450-227 ducts . Refer to the current G36020 drawing and CMM 36-10-05 for complete usage instructions. G36020-34 consists of a G36020-115 clamp assembly and a G36020-220 plug assembly contained in a storage box.

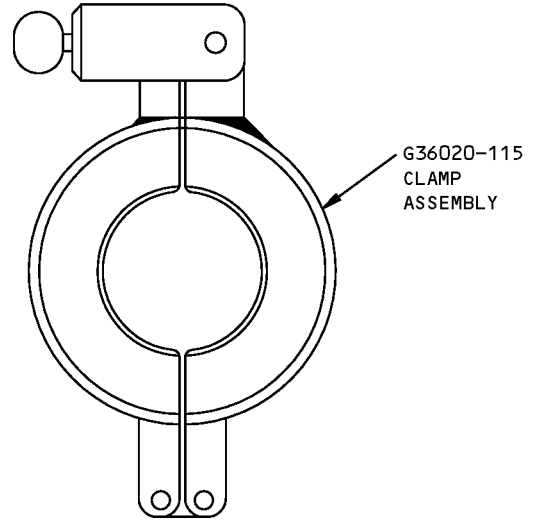
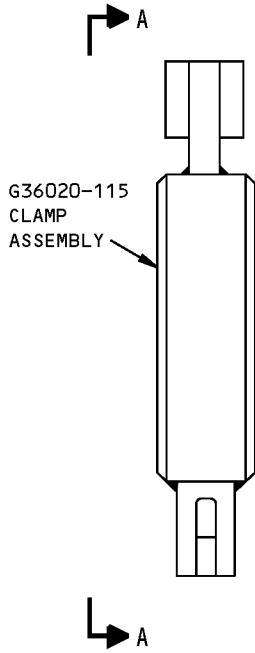
NOTE: G36020-34 supersedes G36020-17.

ILLUSTRATED TOOL AND EQUIPMENT MANUAL



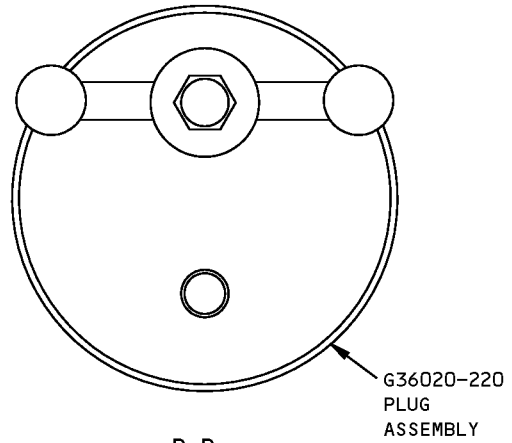
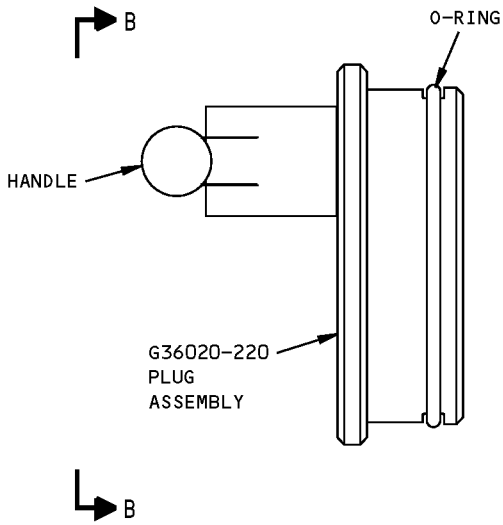
G36020-34 plug equipment
Figure 1 (Sheet 1 of 2)

ILLUSTRATED TOOL AND EQUIPMENT MANUAL



G36020-115
CLAMP ASSEMBLY

(B)



G36020-220
PLUG ASSEMBLY

(C)

**G36020-34 plug equipment
Figure 1 (Sheet 2 of 2)**



757

ILLUSTRATED TOOL AND EQUIPMENT MANUAL

PART NUMBER: B36005-2, -3, -4

NAME: PLUG EQUIPMENT - DUCT TEST

AIRPLANE MAINTENANCE: NO

COMPONENT MAINTENANCE: YES

USAGE & DESCRIPTION: The B36005-2, -3 or -4 (preferred) plug equipment is used during component maintenance on all 757 airplanes. B36005 is used during hydrostatic proof pressure testing of low pressure ducts. B36005 contains a plug and clamp assembly that is used on various 14th stage manifold assemblies and lower engine starter assembly ducts. Refer to the current B36005 drawing and CMM 36-10-06 for complete usage instructions. B36005-2, -3 and -4 consists of:

B36005-2		
QUANTITY	NOMENCLATURE	PART NUMBER
1	PLUG ASSEMBLY	B36005-202
1	CLAMP HALF	B36005-303
1	CLAMP HALF	B36005-304
2	BOLT	AN9-26
2	SCREW	MS16995-54
1	STORAGE BOX	

B36005-3		
QUANTITY	NOMENCLATURE	PART NUMBER
1	PLUG ASSEMBLY	B36005-201
1	CLAMP HALF	B36005-301
1	CLAMP HALF	B36005-302
2	BOLT	NAS6604-6
2	SCREW	NAS1352-4-16
1	STORAGE BOX	

B36005-4		
QUANTITY	NOMENCLATURE	PART NUMBER
1	PLUG ASSEMBLY	B36005-202
1	CLAMP HALF	B36005-303
1	CLAMP HALF	B36005-304
2	BOLT	NAS6609-8



757
ILLUSTRATED TOOL AND EQUIPMENT MANUAL

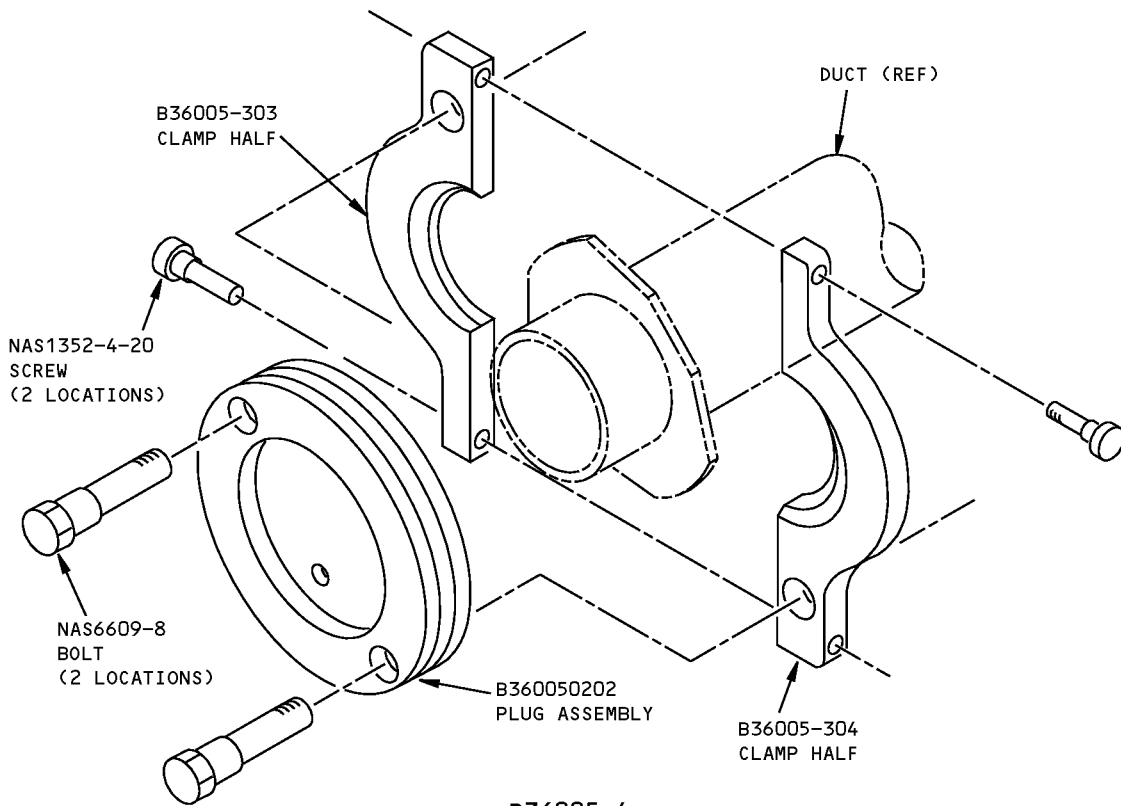
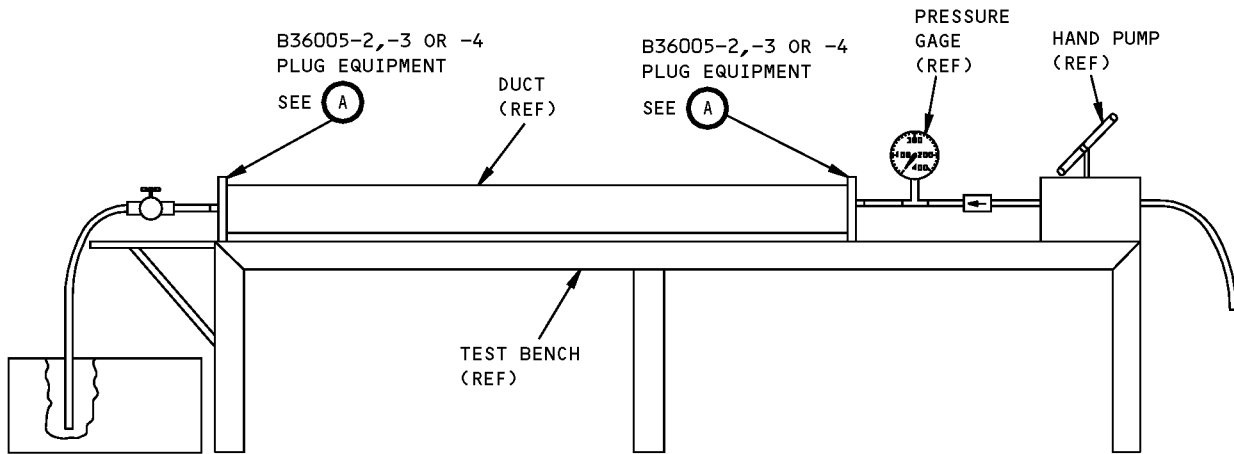
B36005-4		
QUANTITY	NOMENCLATURE	PART NUMBER
2	SCREW	NAS1352-4-16
1	STORAGE BOX	

WEIGHT: 7 lbs (3.2 kg)

DIMENSIONS: 1 x 6 x 8 inches (25 x 152 x 203 mm)

NOTE: B36005-3 supersedes B36005-1.
B36005-4 replaces B36005-2 for future procurement.

ILLUSTRATED TOOL AND EQUIPMENT MANUAL



B36005-4
PLUG EQUIPMENT SHOWN
B36005-2,-3 SIMILAR



**Duct Test Plug Equipment
Figure 1**



757

ILLUSTRATED TOOL AND EQUIPMENT MANUAL

PART NUMBER: A36014-1

NAME: PRESSURE TEST EQUIPMENT - DUCT ASSEMBLY

AIRPLANE MAINTENANCE: NO

COMPONENT MAINTENANCE: YES

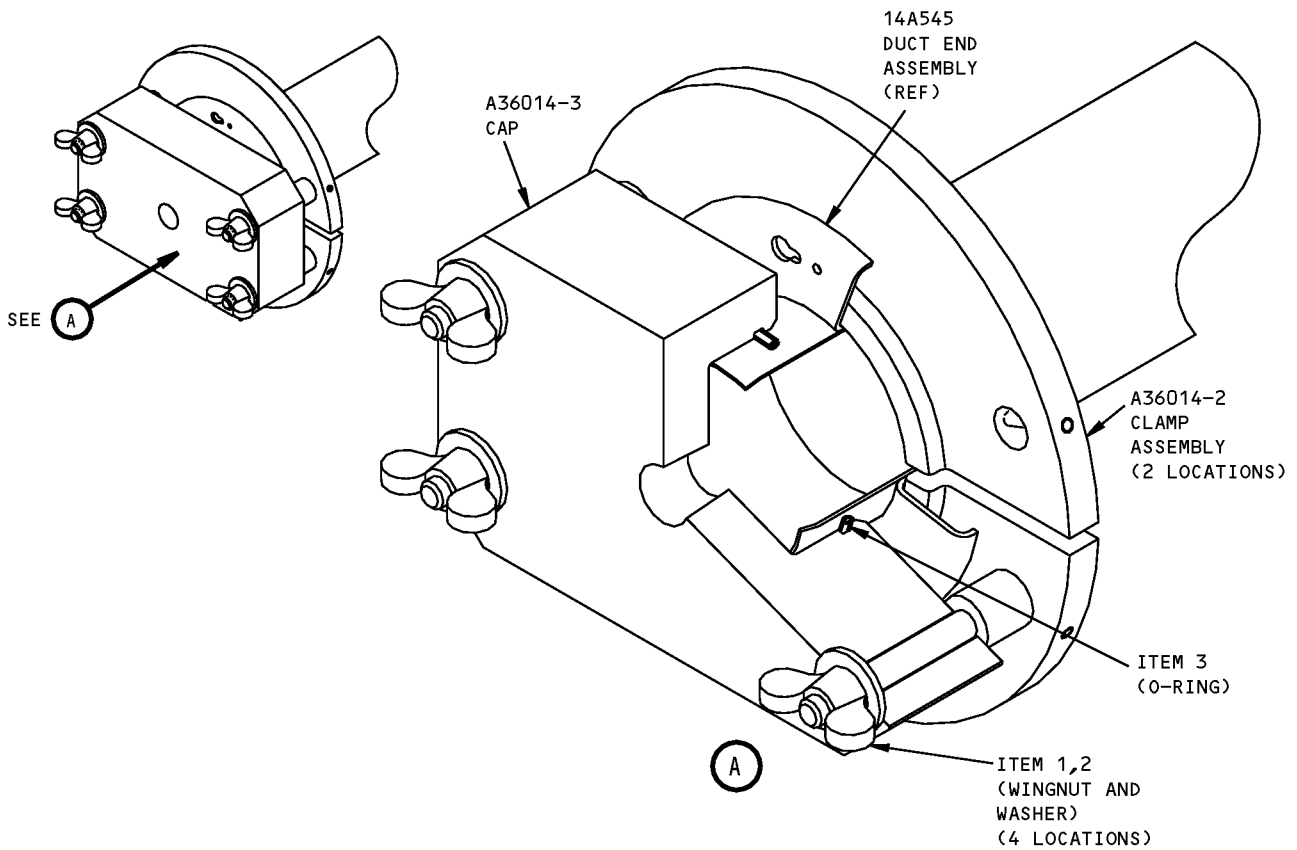
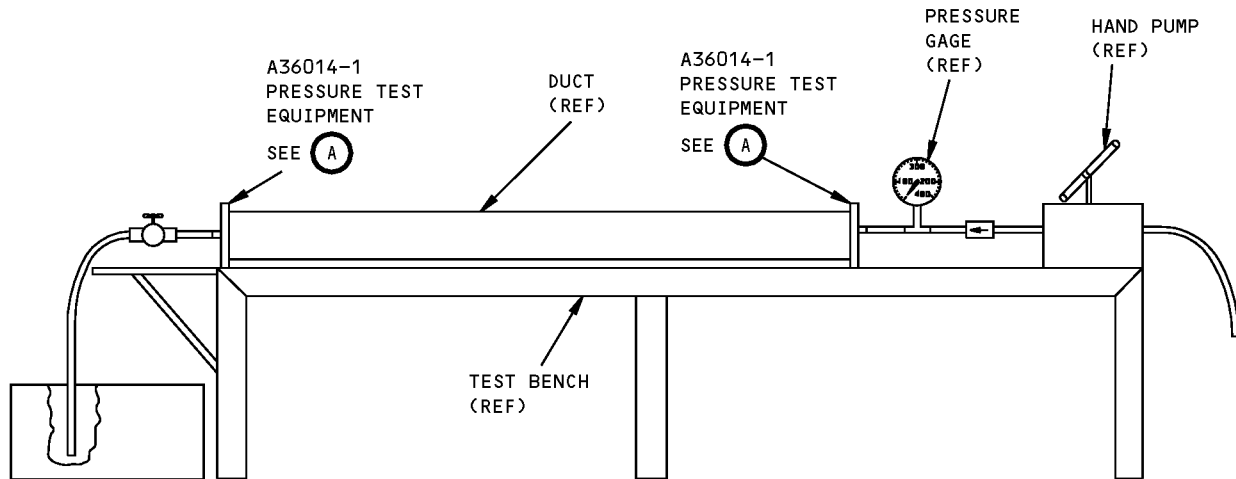
USAGE & DESCRIPTION: The A36014-1 pressure test equipment is used during component maintenance on all 757 airplanes. A36014 is used to seal flanges 14A545-1,-3 or -11 when hydrostatic testing duct assemblies 213N1100 or 213N1101. Refer to CMM 36-10-06 for complete usage instructions. A36014-1 consists of

A36014-1		
QUANTITY	NOMENCLATURE	PART NUMBER
2	CLAMP ASSEMBLY	A36014-2
1	CAP	A36014-3
4	WING NUT	A36014-4
4	WASHER	A36014-5
1	O-RING	A36014-6
1	STORAGE BOX	

WEIGHT: 4 lbs (1.8 kg)

DIMENSIONS: 3 x 6 x 6 inches (76 x 152 x 152 mm)

ILLUSTRATED TOOL AND EQUIPMENT MANUAL



**Duct Assembly Pressure Test Equipment
Figure 1**



757

ILLUSTRATED TOOL AND EQUIPMENT MANUAL

REPAIRABLE/REPLACEABLE PARTS			
ITEM NO.	PART NO.	NOMENCLATURE	VENDOR CODE
1	A36014-5	WASHER	
2	A36014-4	WING NUT	
3	A36014-6	O-RING	V02697



757

ILLUSTRATED TOOL AND EQUIPMENT MANUAL

PART NUMBER: C36001-44

NAME: TEST EQUIPMENT - ENGINE BLEED AIR SYSTEMS

AIRPLANE MAINTENANCE: YES

COMPONENT MAINTENANCE: NO

USAGE & DESCRIPTION: C36001-44 test equipment is used on all 757 airplanes. C36001-44 test equipment is used to perform operational or functional tests of the engine bleed air system components. The superseded C36001-39 may be reworked into C36001-44 by following the instructions contained in the current C36001 drawing. Refer to AMM 36-00-22, AMM-36-00-23, AMM 36-11-07, AMM 36-11-09 and AMM 36-11-16 for complete usage instructions.

The C36001 consists of:

C36001-44		
QUANTITY	NOMENCLATURE	PART NUMBER
1	30 PSI GAUGE ASSEMBLY	C36001-2
1	60 PSI GAUGE ASSEMBLY	C36001-3
1	VALVE ASSEMBLY	C36001-4
2	REGULATOR ASSEMBLY	C36001-45
3	LONG HOSE	C36001-7
2	SHORT HOSE	C36001-8
4	FLARELESS ELBOW REDUCER MS4	C36001-9
4	FLARELESS ELBOW REDUCER MS5	C36001-10
4	FLARELESS ELBOW REDUCER MS6	C36001-11
3	FLARE TUBE END CAP AN4	C36001-12
10	FLARELESS TUBE END CAP MS4	C36001-13
3	FLARELESS TUBE END PLUG MS6	C36001-14
3	FLARELESS TUBE END PLUG MS4	C36001-15
3	PLUG AN4	C36001-16
3	MALE ADAPTER AN4/MS4	C36001-17
1	UNION ADAPTER AN4/MS4	C36001-18
1	UNION MS4	C36001-19
1	UNION MS5	C36001-20
1	UNION MS6	C36001-21
1	STORAGE BOX	



757

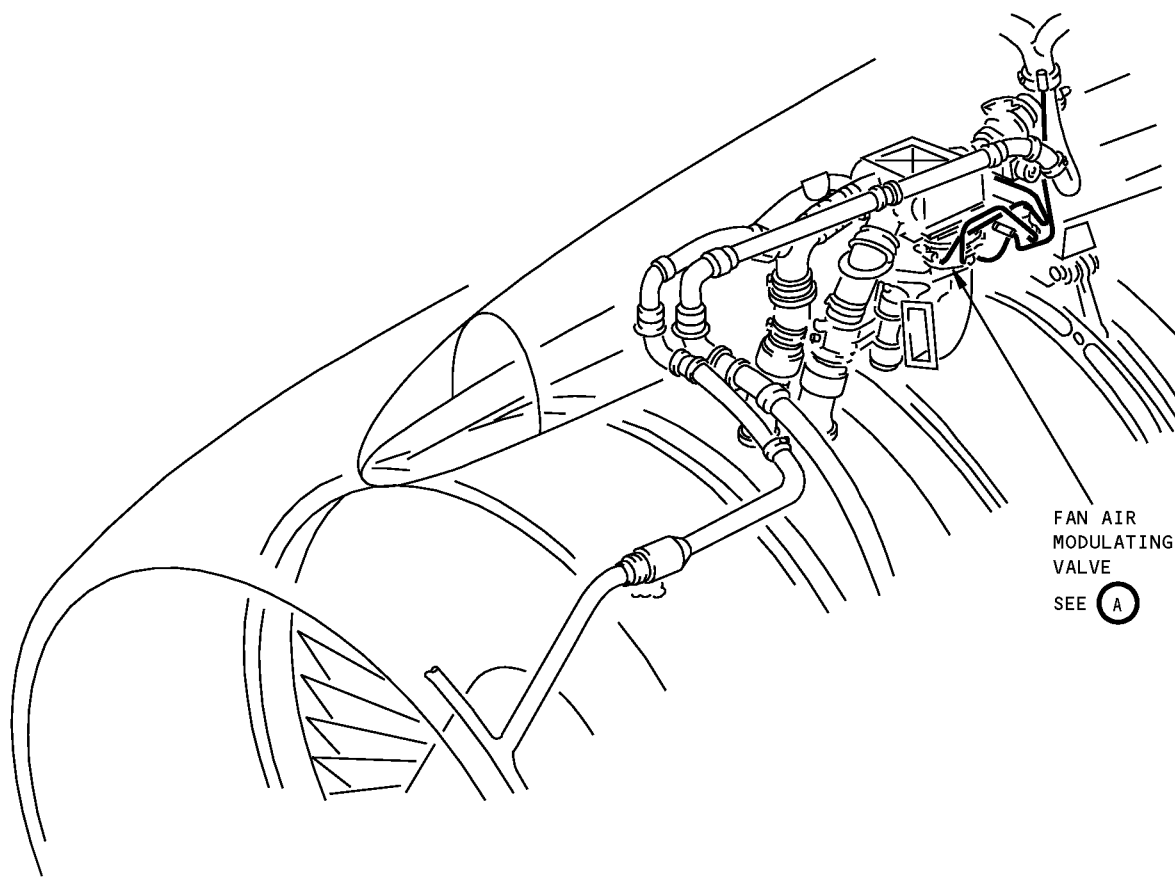
ILLUSTRATED TOOL AND EQUIPMENT MANUAL

WEIGHT: 20 lbs (9 kg)

DIMENSIONS: 5 x 35 x 70 inches (127 x 889 x 1778 mm)

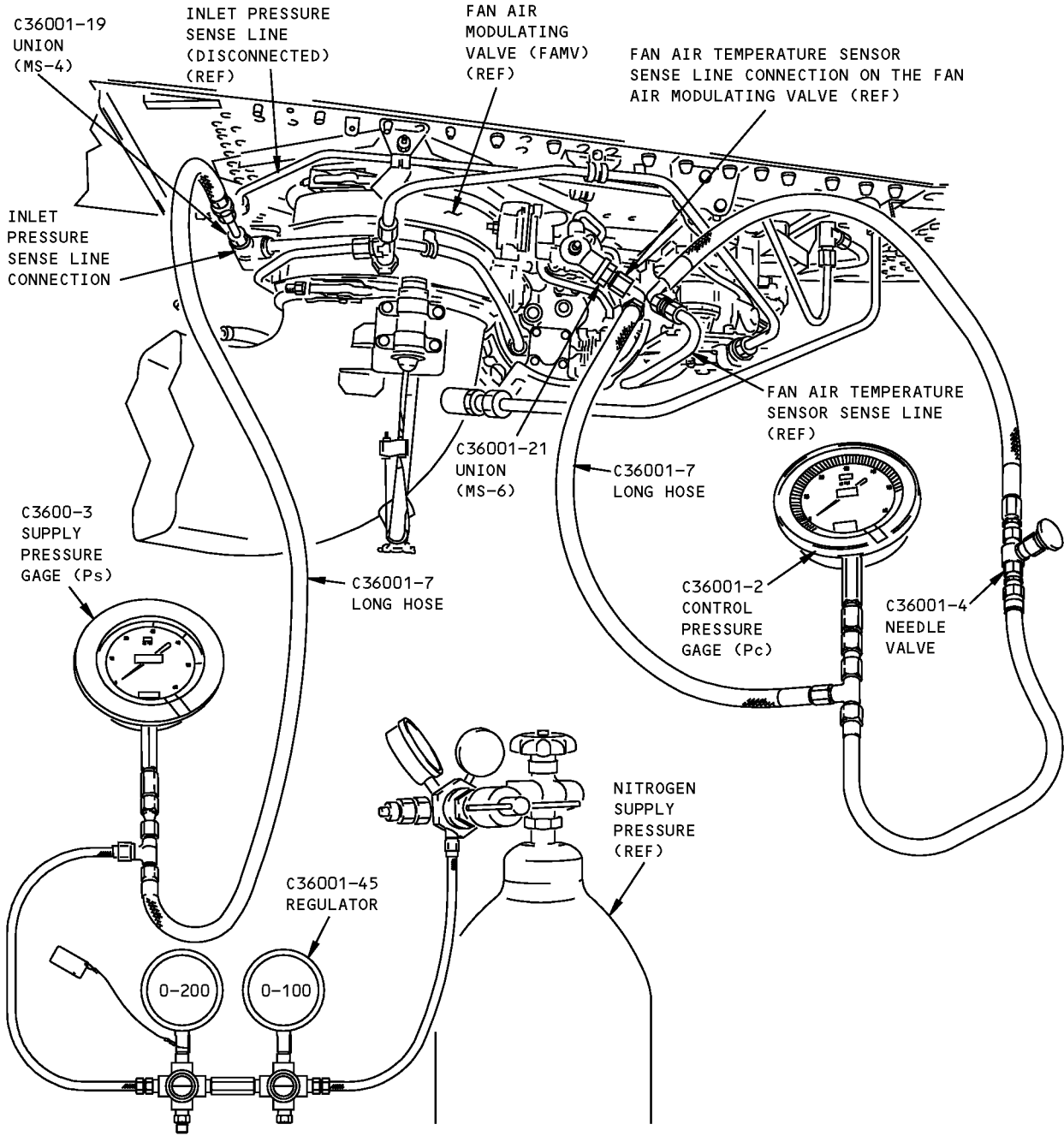
NOTE: C36001-44 supersedes C36001-39.

757
ILLUSTRATED TOOL AND EQUIPMENT MANUAL



Engine Bleed Air Systems Test Equipment
Figure 1 (Sheet 1 of 4)

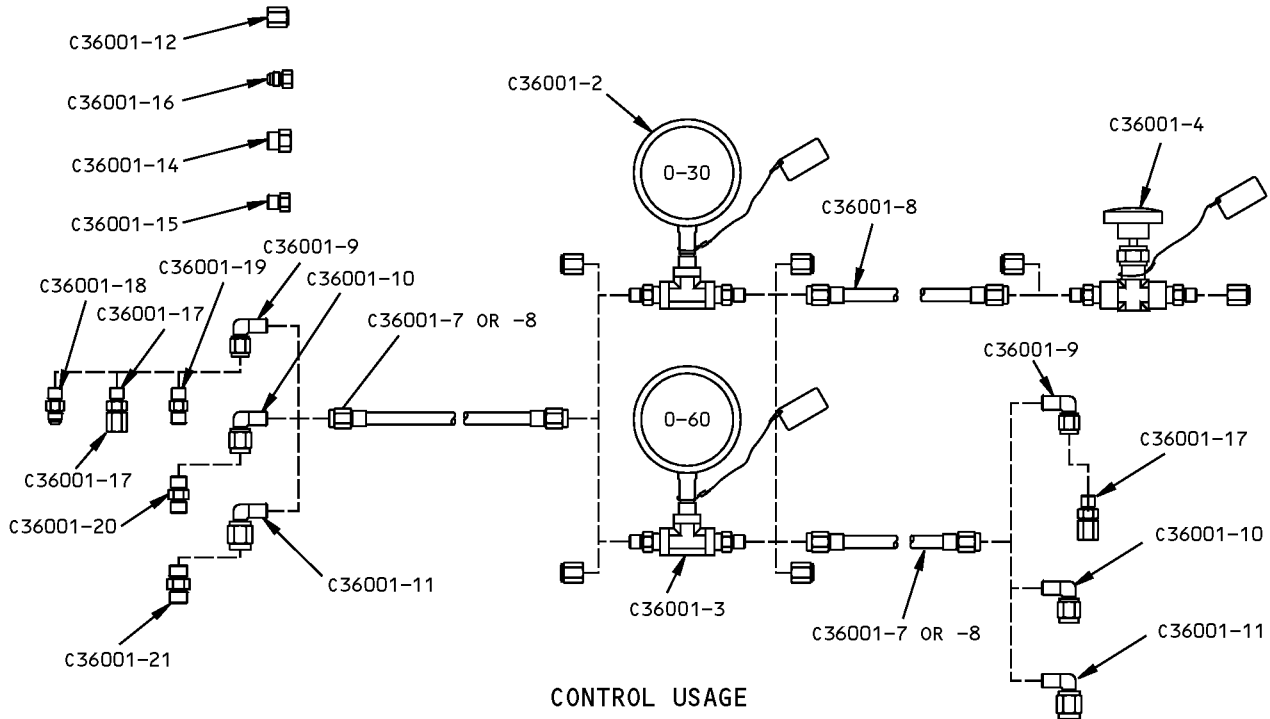
ILLUSTRATED TOOL AND EQUIPMENT MANUAL



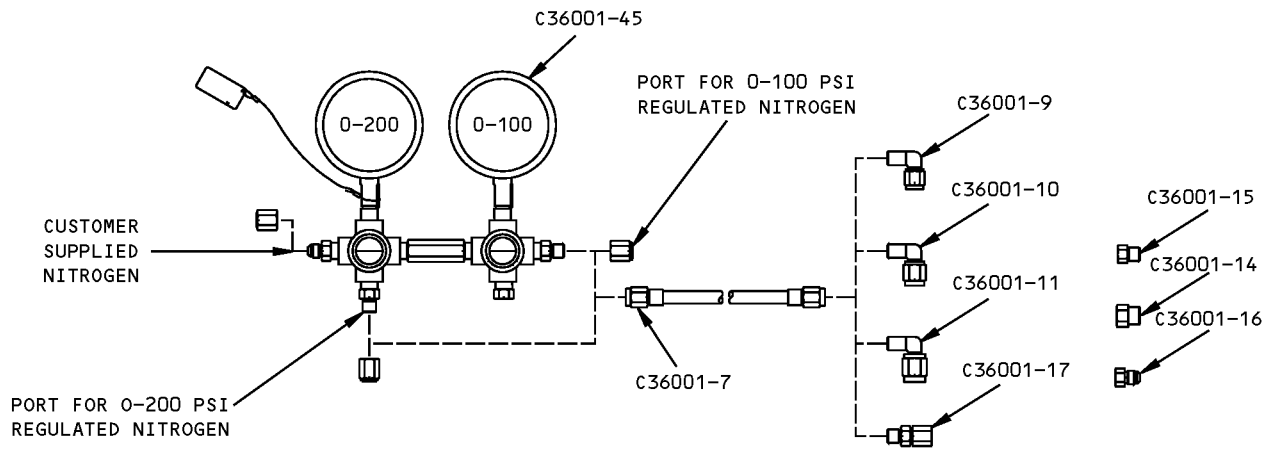
FAN AIR MODULATING VALVE TEST EQUIPMENT

(A)

**Engine Bleed Air Systems Test Equipment
Figure 1 (Sheet 2 of 4)**



**Engine Bleed Air Systems Test Equipment
Figure 1 (Sheet 3 of 4)**



SUPPLY USAGE

**Engine Bleed Air Systems Test Equipment
Figure 1 (Sheet 4 of 4)**



757

ILLUSTRATED TOOL AND EQUIPMENT MANUAL

PART NUMBER: A36016-1

NAME: PRESSURE TEST PLUG - DUCT ASSEMBLY

AIRPLANE MAINTENANCE: NO

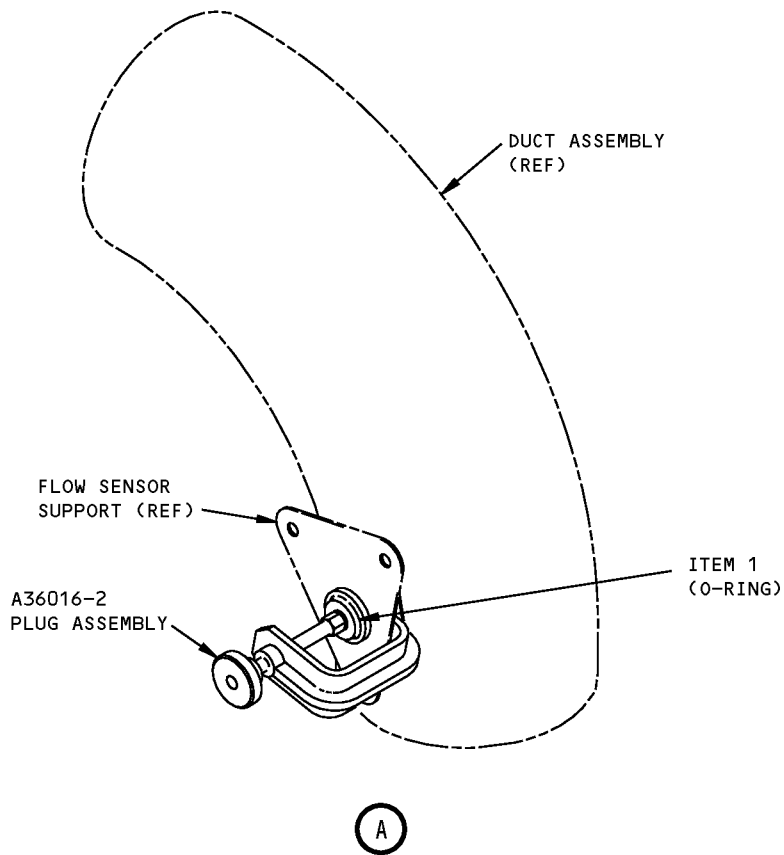
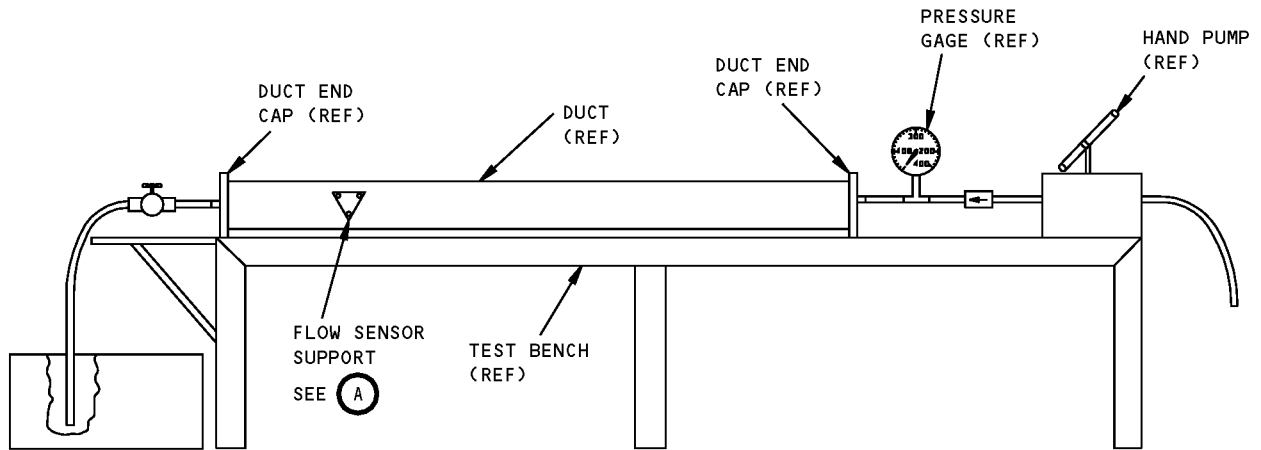
COMPONENT MAINTENANCE: YES

USAGE & DESCRIPTION: The A36016-1 pressure test plug is used during component maintenance on all 757 airplanes. A36016 is used to seal boss assembly 213T2119-1 (flow sensor support) during hydrostatic pressure testing of duct assemblies 212N3091, 212N3092, 212N1007, 213N1008, 213N1100 and 213T2100. Refer to CMM 36-10-05 and CMM 36-10-06 for complete usage instructions. A36016-1 consists of a A36016-2 plug assembly contained in a storage box.

WEIGHT: 5 lbs (2.3 kg)

DIMENSIONS: 2 x 2 x 4 inches (51 x 51 x 102 mm)

ILLUSTRATED TOOL AND EQUIPMENT MANUAL



**Duct Assembly Pressure Test Plug
Figure 1**



757

ILLUSTRATED TOOL AND EQUIPMENT MANUAL

REPAIRABLE/REPLACEABLE PARTS			
ITEM NO.	PART NO.	NOMENCLATURE	VENDOR CODE
1	A36016-7	O-RING	V02697