

**CHAPTER**

**38**

**WATER/WASTE**



757

ILLUSTRATED TOOL AND EQUIPMENT MANUAL

CHAPTER 38  
WATER/WASTE

Subject/Page	Date	Subject/Page	Date	Subject/Page	Date
EFFECTIVE PAGES		38-30-09 (cont)			
1	Sep 20/2008	4	Sep 20/2006		
2	BLANK	38-30-10			
38-CONTENTS		1	Sep 20/2006		
R 1	Sep 20/2008	2	Sep 20/2006		
2	BLANK	3	Sep 20/2006		
38-30-01		4	Sep 20/2006		
1	Sep 20/2006	5	Sep 20/2006		
2	Sep 20/2006	6	Sep 20/2006		
3	Sep 20/2006	38-30-11			
4	BLANK	1	Sep 20/2006		
38-30-02		2	Sep 20/2006		
1	Sep 20/2006				
2	Sep 20/2006				
3	Sep 20/2006				
4	BLANK				
38-30-03					
1	Sep 20/2006				
2	Sep 20/2006				
38-30-04					
1	Sep 20/2006				
2	Sep 20/2006				
38-30-05					
1	Sep 20/2006				
2	Sep 20/2006				
38-30-06					
1	Sep 20/2006				
2	Sep 20/2006				
38-30-07					
1	Sep 20/2007				
2	Sep 20/2006				
38-30-08					
R 1	Sep 20/2008				
R 2	Sep 20/2008				
R 3	Sep 20/2008				
R 4	Sep 20/2008				
38-30-09					
1	Sep 20/2006				
2	Sep 20/2006				
3	Sep 20/2006				

A = Added, R = Revised, O = Overflow, D = Deleted

# 38-EFFECTIVE PAGES



757

## ILLUSTRATED TOOL AND EQUIPMENT MANUAL

### TABLE OF CONTENTS

<u>Subject</u>	<u>Title</u>	<u>Part No.</u>
<b>38-</b>	<b>WATER/WASTE</b>	
38-30-01	PLUG EQUIPMENT - DRAIN MAST, WASTE WATER	A38011-2
38-30-02	DRAIN MAST PLUG - WASTE WATER	C38001-1
38-30-03	BLOCKAGE REMOVER - VACUUM TOILET	A38003-20
38-30-04	BLOCKAGE REMOVAL TOOL - VACUUM LAVATORY SYSTEM	G38004-10, -13
38-30-05	PLUG, VACUUM WASTE SYSTEM	A38007-1
38-30-06	BLOCKAGE REMOVAL EQUIPMENT - VACUUM WASTE SYSTEM	G38006-1
38-30-07	TESTER - TOILET VACUUM	A38006-1
I 38-30-08	VACUUM TEST EQUIPMENT - VACUUM WASTE SYSTEM	A38001-22, -68,
38-30-09	PUMP EQUIPMENT - VACUUM LAVATORY SYSTEM	A38012-1, -18
38-30-10	TEST CHAMBER EQUIPMENT - LAVATORY SERVICE PANEL	G38005-1, -111, -114, -115
38-30-11	SENSOR CLEANER - LAVATORY WASTE TANK	A38009-11

# 38-CONTENTS

Page 1  
Sep 20/2008

D634N501



757

**ILLUSTRATED TOOL AND EQUIPMENT MANUAL**

**PART NUMBER: A38011-2**

**NAME:** PLUG EQUIPMENT - DRAIN MAST, WASTE WATER

**AIRPLANE MAINTENANCE:** YES

**COMPONENT MAINTENANCE:** NO

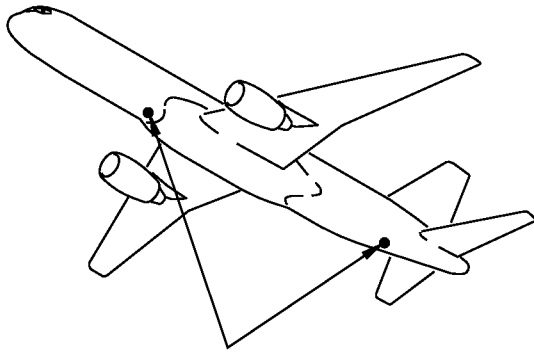
**USAGE & DESCRIPTION:** The A38011-2 plug equipment is used on all 757 airplanes. A38011 is used to plug the waste water forward and aft drain masts during drain line blockage removal or cleaning. Refer to AMM 38-31-60 for the 757 package freighter complete usage instructions. Refer to AMM 38-11-00 and AMM 38-31-00 for other 757 models complete usage instructions. A38011-2 consists of two A38011-2 plug assemblies contained in a storage box.

**WEIGHT:** 5 lbs (2.3 kg)

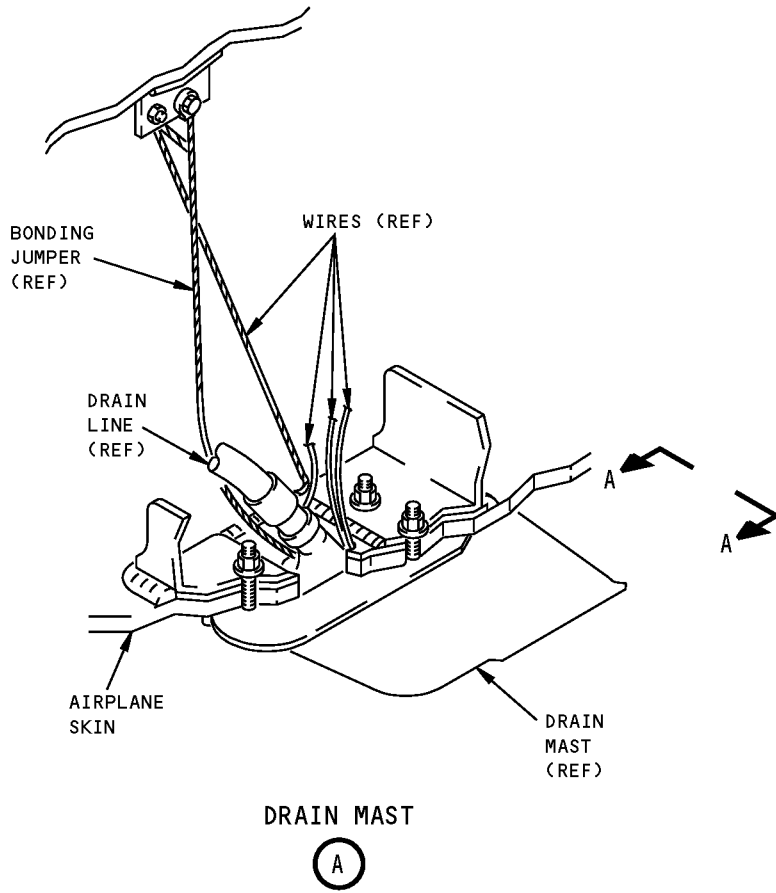
**DIMENSIONS:** 4 x 6 x 6 inches (102 x 152 x 152 mm)

**NOTE:** C38001 replaces A38011-2 for future procurement.

**757**  
**ILLUSTRATED TOOL AND EQUIPMENT MANUAL**

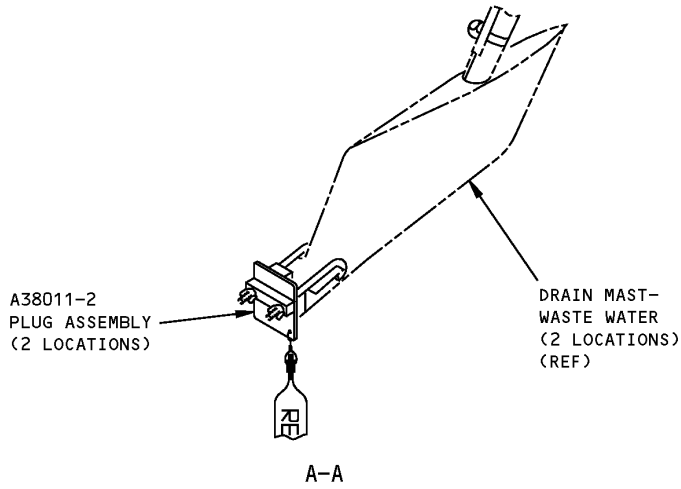


DRAIN MAST  
SEE (A)



**Waste Water Drain Mast Plug Equipment**  
**Figure 1 (Sheet 1 of 2)**

**ILLUSTRATED TOOL AND EQUIPMENT MANUAL**



**Waste Water Drain Mast Plug Equipment  
Figure 1 (Sheet 2 of 2)**



757

## ILLUSTRATED TOOL AND EQUIPMENT MANUAL

**PART NUMBER: C38001-1**

**NAME:** DRAIN MAST PLUG - WASTE WATER

**AIRPLANE MAINTENANCE:** YES

**COMPONENT MAINTENANCE:** NO

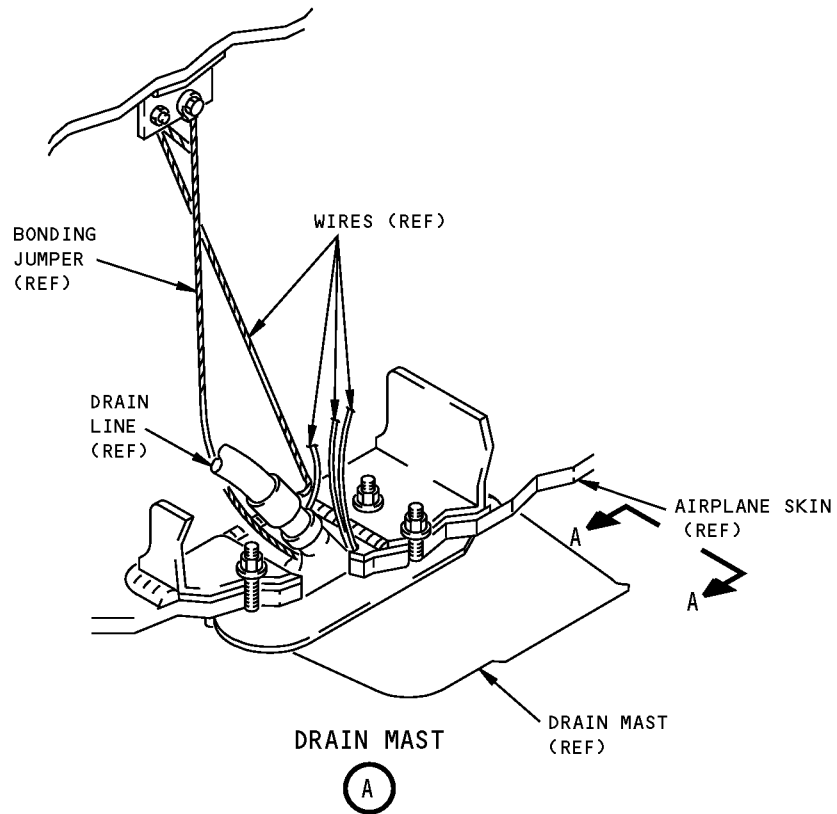
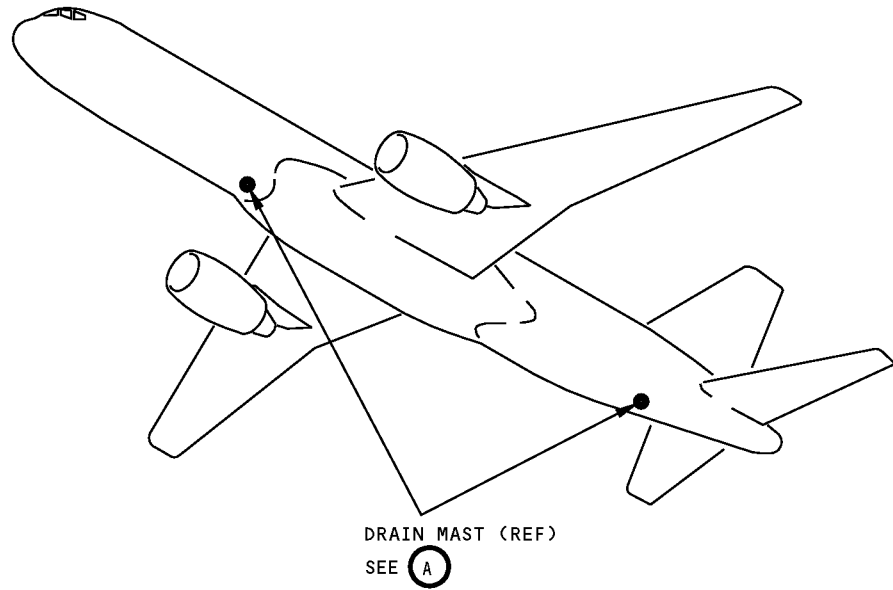
**USAGE & DESCRIPTION:** The C38001-1 drain mast plug is used on all 757 airplanes. C38001 is used to plug the forward and aft waste water drain mast during gray water cleaning procedures. Refer to AMM 38-11-00 and AMM 38-31-00 for complete instructions. C38001-1 consists of a C38001-2 mast plug assembly contained in a storage box.

**WEIGHT:** 5 lbs (2.3 kg)

**DIMENSIONS:** 8 x 12 x 12 inches (203 x 305 x 305 mm)

**NOTE:** C38001 replaces A38011 for future procurement.

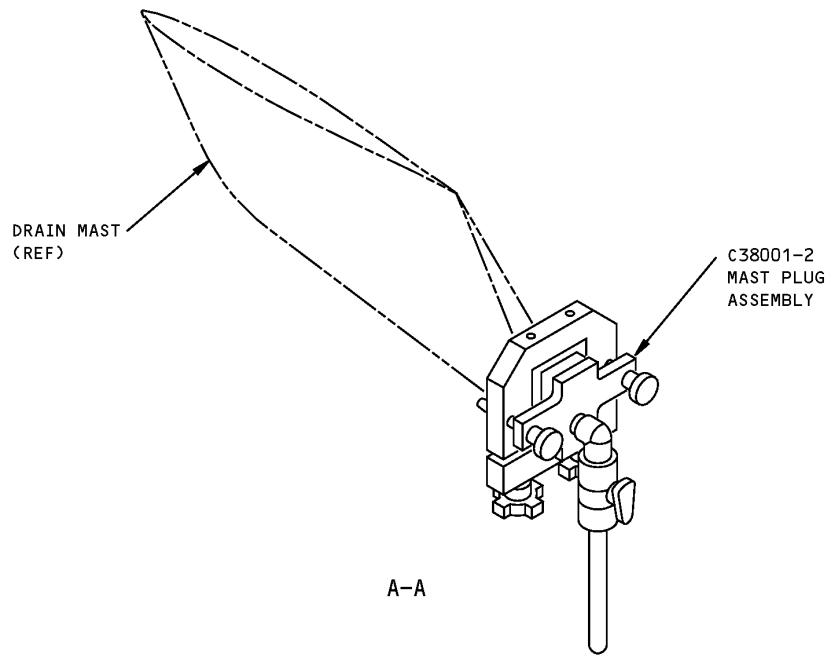
**757  
ILLUSTRATED TOOL AND EQUIPMENT MANUAL**



**Waste Water Drain Mast Plug  
Figure 1 (Sheet 1 of 2)**



**ILLUSTRATED TOOL AND EQUIPMENT MANUAL**



**Waste Water Drain Mast Plug  
Figure 1 (Sheet 2 of 2)**



757

## ILLUSTRATED TOOL AND EQUIPMENT MANUAL

**PART NUMBER: A38003-20**

**NAME:** BLOCKAGE REMOVER - VACUUM TOILET

**AIRPLANE MAINTENANCE:** YES

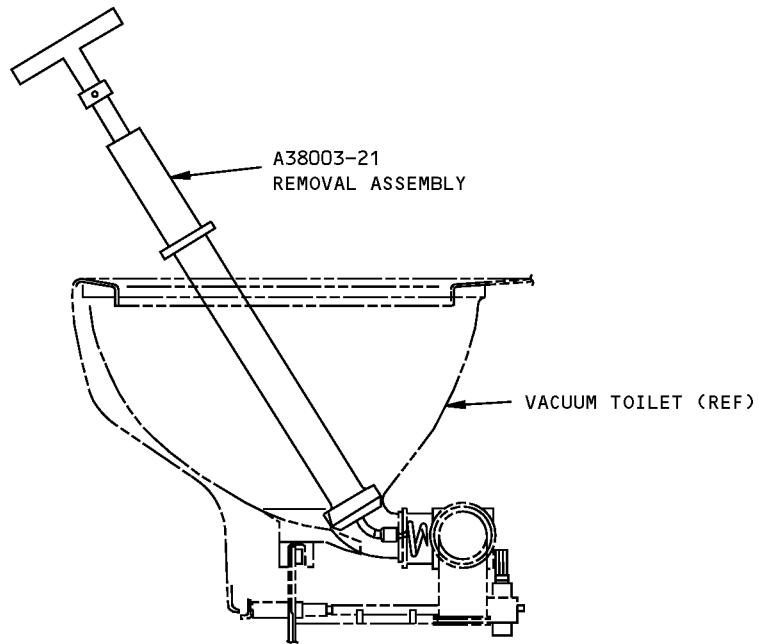
**COMPONENT MAINTENANCE:** NO

**USAGE & DESCRIPTION:** The A38003-20 blockage remover is used on 757-200 and -300 airplanes equipped with vacuum waste systems line number 916 and on. A38003 is used to remove an obstruction between the toilet bowl and the diaphragm valve. Refer to AMM 38-32-30 for complete usage instructions. A38003-20 consists of an A38003-21 removal assembly contained in a storage box.

**WEIGHT:** 4 lbs (1.8 kg)

**DIMENSIONS:** 3 x 5 x 27 inches (76 x 127 x 686 mm)

**NOTE:** A38003-20 supersedes A38003-14.  
A38003 supersedes A38008.



**Vacuum Toilet Blockage Remover  
Figure 1**



757

## ILLUSTRATED TOOL AND EQUIPMENT MANUAL

**PART NUMBER: G38004-10, -13**

**NAME:** BLOCKAGE REMOVAL TOOL - VACUUM LAVATORY SYSTEM

**AIRPLANE MAINTENANCE:** YES

**COMPONENT MAINTENANCE:** NO

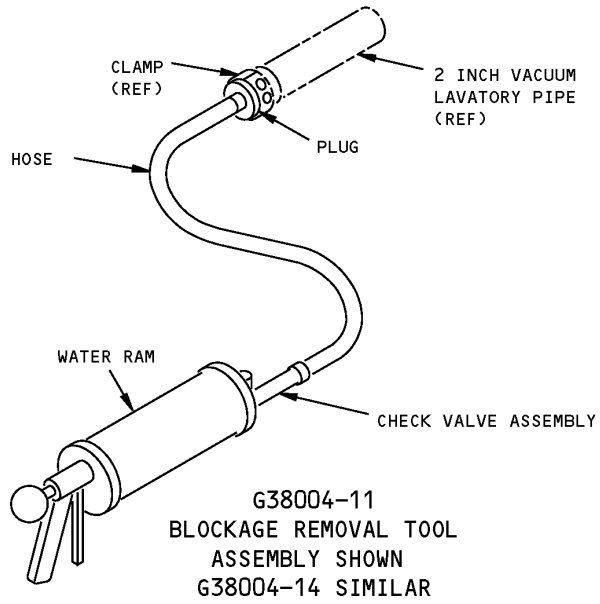
**USAGE & DESCRIPTION:** G38004-10 or -13 blockage removal tool is used on 757-200 and -300 airplanes equipped with vacuum waste systems, line number 916 and on. G38004-13 includes a vacuum gauge, G38004-10 does not. G38004 is used to clear blockages in the 2 inch plumbing of the vacuum lavatory system. G38004 is not to be used on the toilets or the 4 inch lavatory service plumbing. Refer to AMM 38-32-30 for complete usage instructions. G38004-10 consists of a G38004-11 blockage removal tool assembly contained in a storage box. G38004-13 consists of a G38004-14 blockage removal tool assembly contained in a storage box.

**WEIGHT:** G38004-10 - 12 lbs (5.4 kg)  
G38004-13 - 14 lbs (6.4 kg)

**DIMENSIONS:** G38004-10 - 10 x 16 x 33 inches (254 x 406 x 838 mm)  
G38004-13 - 16 x 17 x 33 inches (406 x 432 x 838 mm)

**NOTE:** G38004-10 supersedes G38004-6.  
G38004-13 replaces G38004-10 for future procurement.

**ILLUSTRATED TOOL AND EQUIPMENT MANUAL**



**Vacuum Lavatory System Blockage Removal Tool  
Figure 1**



757

## ILLUSTRATED TOOL AND EQUIPMENT MANUAL

**PART NUMBER: A38007-1**

**NAME:** PLUG, VACUUM WASTE SYSTEM

**AIRPLANE MAINTENANCE:** YES

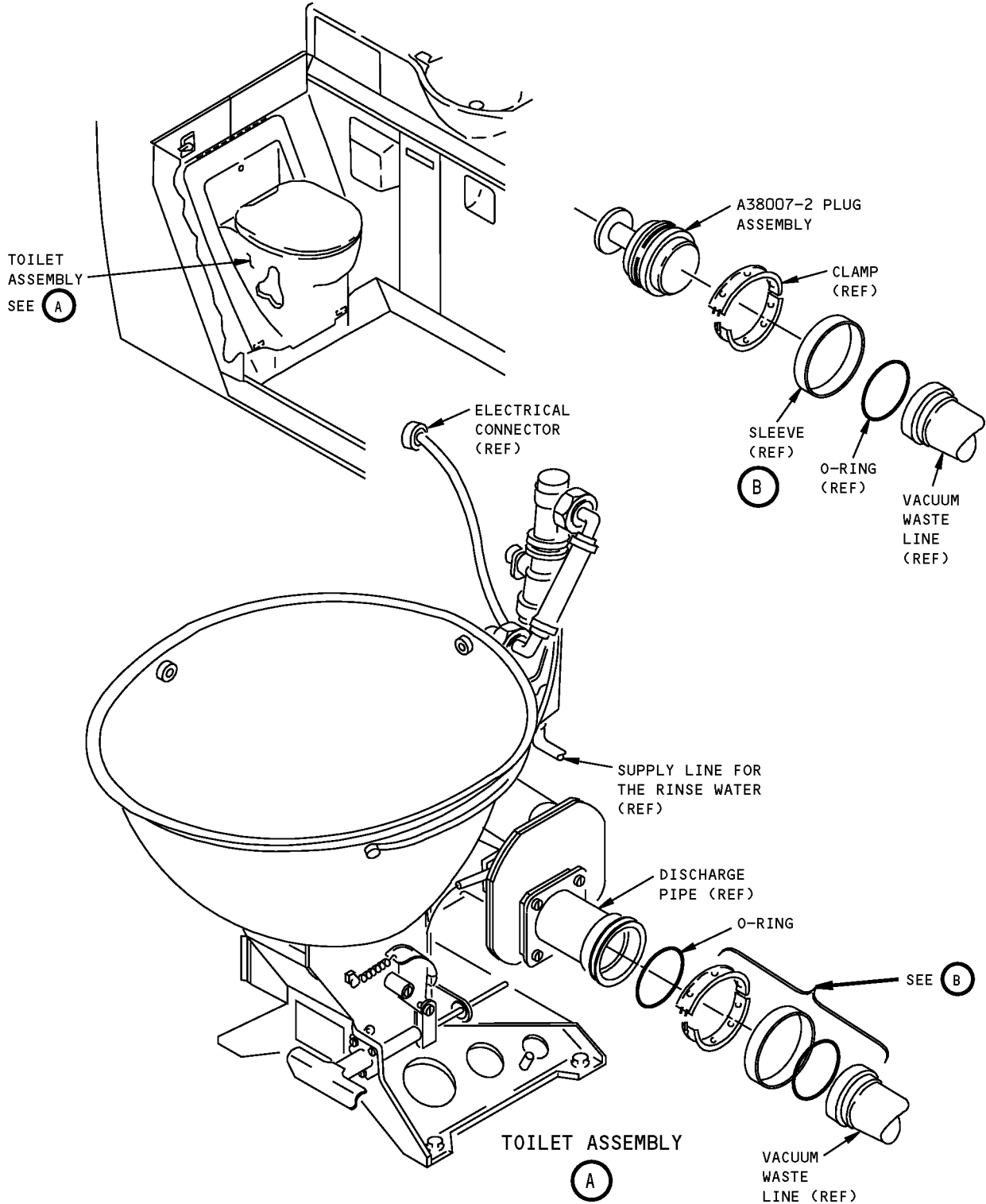
**COMPONENT MAINTENANCE:** NO

**USAGE & DESCRIPTION:** The A38007-1 plug is used on 757-200 and -300 airplanes equipped with vacuum waste systems, line number 916 and on. A38007 is used to plug the vacuum waste line during maintenance when a toilet is removed for repairs. Refer to AMM 38-32-31 for complete usage instructions. A38007-1 consists of a A38007-2 plug assembly contained in a storage box.

**WEIGHT:** 1 lb (0.45 kg)

**DIMENSIONS:** 2 x 3 x 3 inches (51 x 76 x 76 mm)

**757**  
**ILLUSTRATED TOOL AND EQUIPMENT MANUAL**



**Vacuum Waste System Plug**  
**Figure 1**



757

**ILLUSTRATED TOOL AND EQUIPMENT MANUAL**

**PART NUMBER: G38006-1**

**NAME:** BLOCKAGE REMOVAL EQUIPMENT - VACUUM WASTE SYSTEM

**AIRPLANE MAINTENANCE:** YES

**COMPONENT MAINTENANCE:** NO

**USAGE & DESCRIPTION:** The G38006-1 blockage removal system is used on 757-200 and -300 airplanes equipped with vacuum waste systems, line number 916 and on. G38006 is used to clear blockages between the service panel and the waste tank in the vacuum waste system. Refer to AMM 38-32-30 for complete usage instructions. G38006-1 consists of:

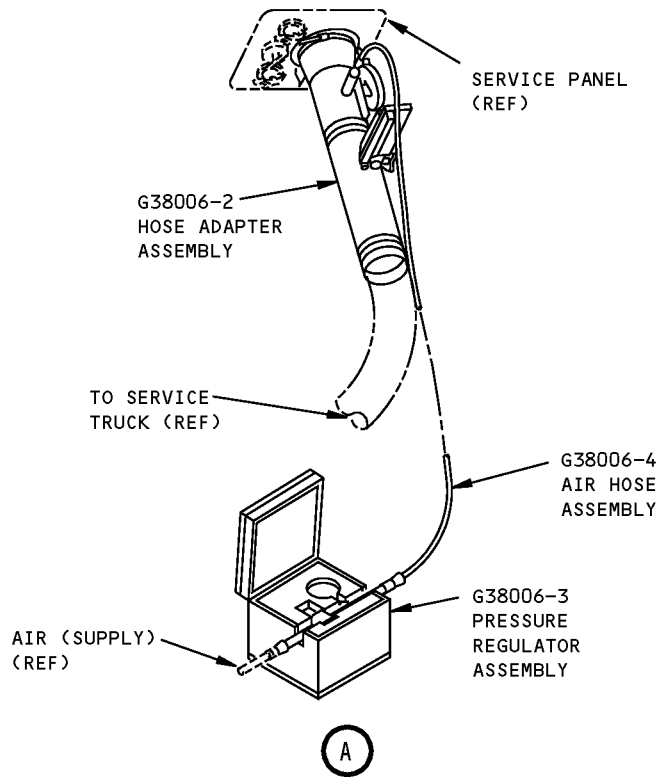
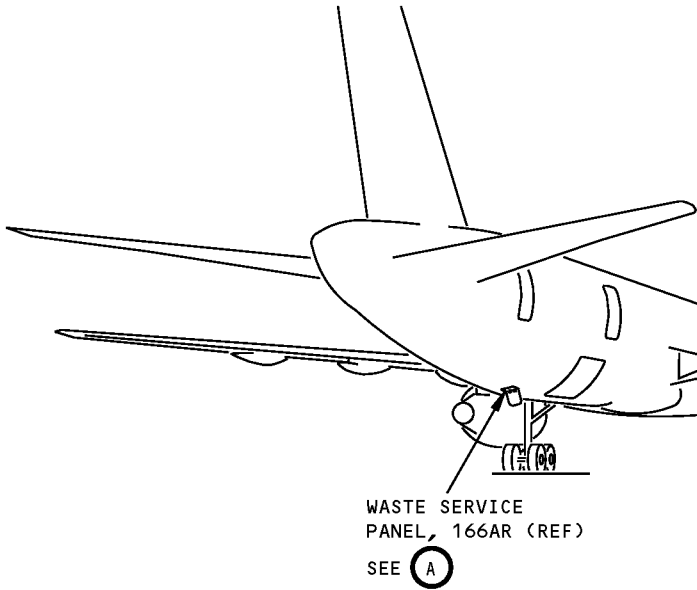
<b>G38006-1</b>		
<b>QUANTITY</b>	<b>NOMENCLATURE</b>	<b>PART NUMBER</b>
1	HOSE ADAPTER ASSEMBLY	G38006-2
1	PRESSURE REGULATOR ASSEMBLY	G38006-3
1	AIR HOSE ASSEMBLY	G38006-4
1	STORAGE BOX	

**WEIGHT:** 10 lbs (4.5 kg)

**DIMENSIONS:** 12 x 24 x 33 inches (305 x 610 x 838 mm)



**ILLUSTRATED TOOL AND EQUIPMENT MANUAL**



**Vacuum Waste System Blockage Removal Equipment  
Figure 1**



757

## ILLUSTRATED TOOL AND EQUIPMENT MANUAL

**PART NUMBER: A38006-1**

**NAME:** TESTER - TOILET VACUUM

**AIRPLANE MAINTENANCE:** YES

**COMPONENT MAINTENANCE:** NO

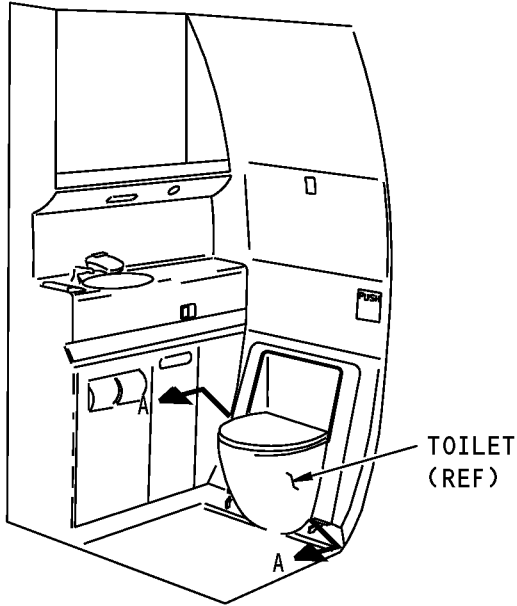
**USAGE & DESCRIPTION:** The A38006-1 tester is used on all 757-200 and -300 airplanes equipped with vacuum waste systems. A38006 is used to determine the number of inches of mercury vacuum in the toilet vacuum lines for vacuum line troubleshooting. Refer to the AMM 38-32-00 and the current A38006 drawing for complete usage instructions.

The A38006 tester consists of:

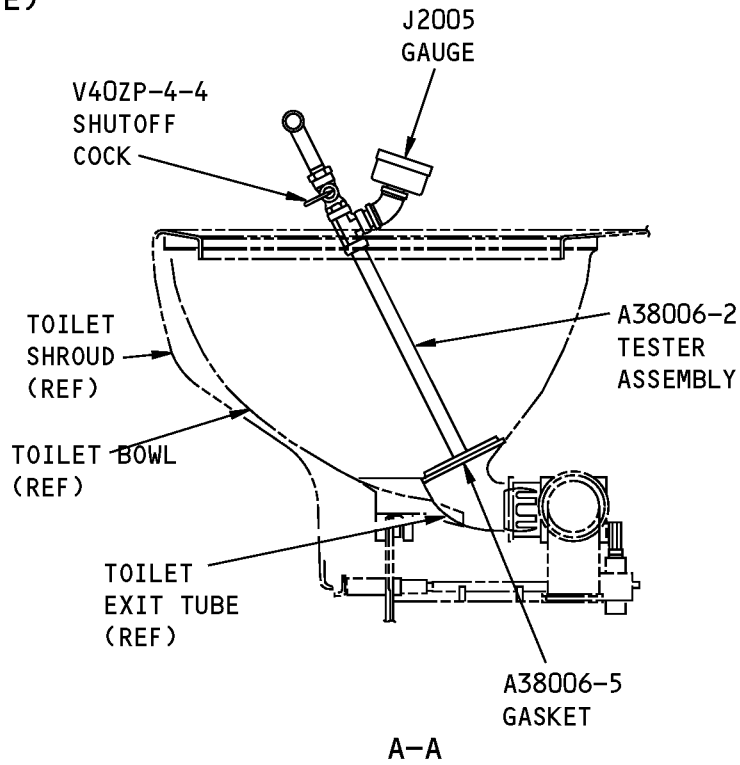
A38006-1		
QUANTITY	NOMENCLATURE	PART NUMBER
1	TESTER ASSEMBLY	A38006-2
1	STORAGE BOX ASSEMBLY	

**WEIGHT:** 3 lbs (1.4 kg)

**DIMENSIONS:** 6 x 6 x 17 inches (152 x 152 x 432 mm)



**LAVATORY  
(EXAMPLE)**



**Toilet Vacuum Tester  
Figure 1**



757

## ILLUSTRATED TOOL AND EQUIPMENT MANUAL

**PART NUMBER: A38001-22, -68,**

**NAME:** VACUUM TEST EQUIPMENT - VACUUM WASTE SYSTEM

**AIRPLANE MAINTENANCE:** YES

**COMPONENT MAINTENANCE:** NO

**USAGE & DESCRIPTION:** The A38001-22 plug equipment and the A38001-68 vacuum source are used on all 757 airplanes equipped with vacuum waste systems. These airplanes include 757-200 airplanes after line number 915 and all 757-300 airplanes. A38001-22 consists of plugs, which are used to plug the vacuum waste system and provide a connection for leak detection equipment. A38001-68 provides a vacuum source for the A38001-22 plug equipment. Refer to current A38001 drawing and AMM 38-32-30 for complete usage instructions.

A38001-22 consists of:

A38001-22 PLUG EQUIPMENT		
QUANTITY	NOMENCLATURE	PART NUMBER
1	OUTLET PLUG	A38001-2
1	PLUG	A38001-3
1	VENT PLUG ASSEMBLY	A38001-4
1	STORAGE BOX	

A38001-68 consists of:

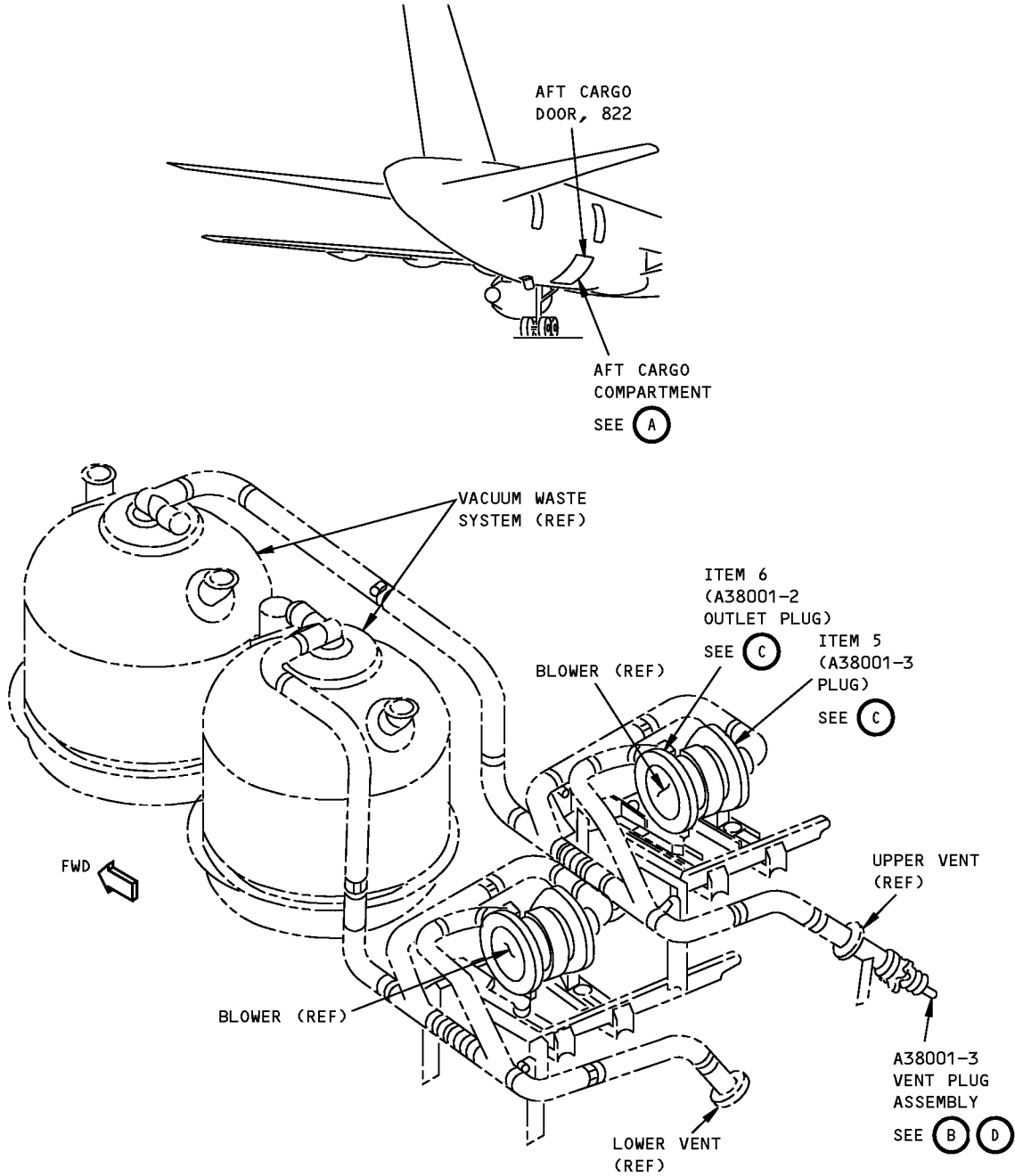
A38001-68 VACUUM SOURCE		
QUANTITY	NOMENCLATURE	PART NUMBER
1	HOSE ASSEMBLY	A38001-26
1	CONTROL BOX ASSEMBLY	A38001-69
1	STORAGE BOX	

**WEIGHT:** A38001-22 - 11 lbs (5 kg)  
A38001-68 - 25 lbs (11 kg)

**DIMENSIONS:** A38001-22 - 5 x 9 x 15 inches (127 x 229 x 381 mm)  
A38001-68 - 14 x 14 x 19 inches (356 x 356 x 483 mm)

**NOTE:** A38001-68 supersedes A38001-25.

**757  
ILLUSTRATED TOOL AND EQUIPMENT MANUAL**



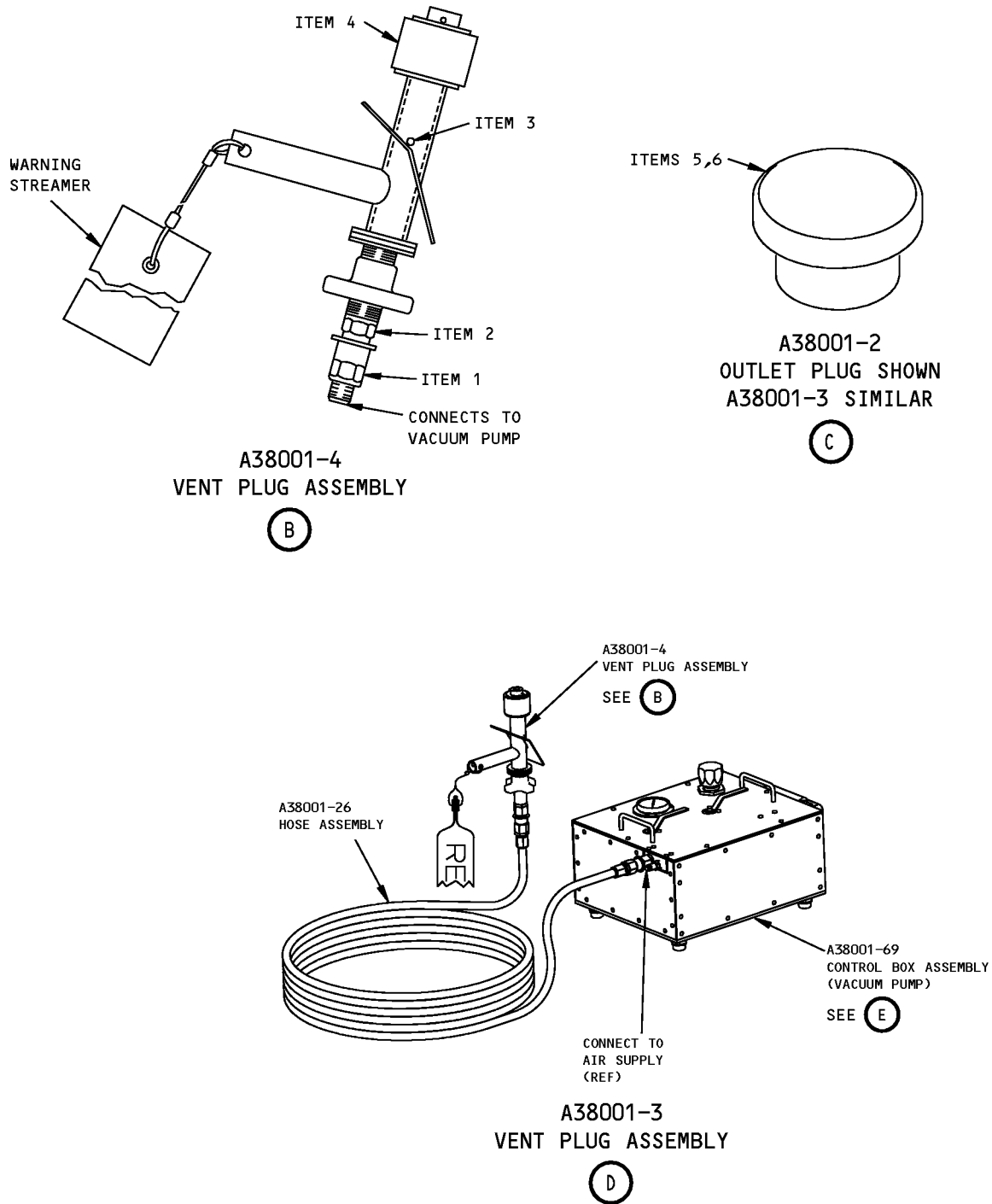
VENT PLUG ASSEMBLY INSTALLED IN UPPER SYSTEM IS SHOWN  
VENT PLUG ASSEMBLY INSTALLED IN LOWER SYSTEM IS SIMILAR

(A)

L91204 S0000213822\_V2

**Vacuum Waste System Test Equipment  
Figure 1 (Sheet 1 of 3)**

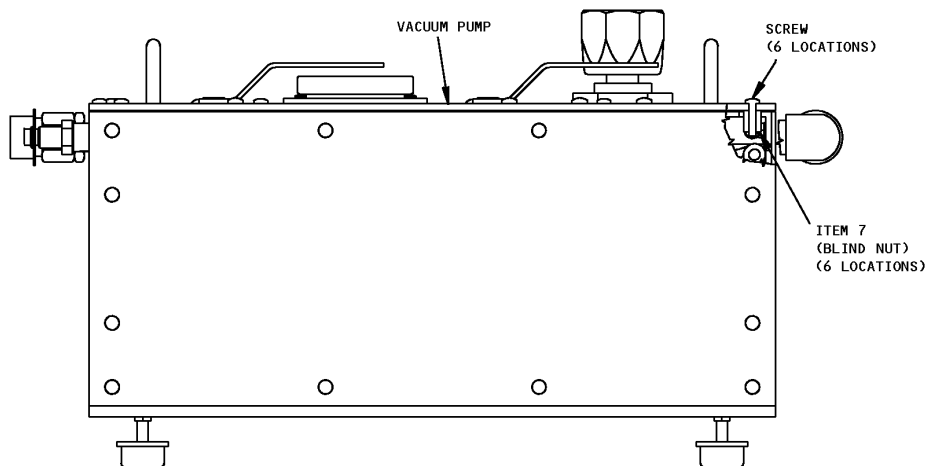
**ILLUSTRATED TOOL AND EQUIPMENT MANUAL**



L91205 S0000213823\_V2

**Vacuum Waste System Test Equipment  
Figure 1 (Sheet 2 of 3)**

**757**  
**ILLUSTRATED TOOL AND EQUIPMENT MANUAL**



A38001-69  
CONTROL BOX ASSEMBLY

E

1597644 S0000299009\_V1

**Vacuum Waste System Test Equipment**  
**Figure 1 (Sheet 3 of 3)**

REPAIRABLE/REPLACEABLE PARTS			
ITEM NO.	PART NO.	NOMENCLATURE	VENDOR CODE
1	VEAN 6-6M	VALVED NIPPLE	78357
2	VEAC 6-6M	VALVED COUPLER	78357
3	MS16562-234	SPRING PIN	
4	A38001-15	STOP	
5	A38001-3	PLUG	
6	A38001-2	OUTLET PLUG	
7	301030A-8-32	BLIND NUT	51506



757

## ILLUSTRATED TOOL AND EQUIPMENT MANUAL

**PART NUMBER: A38012-1, -18**

**NAME:** PUMP EQUIPMENT - VACUUM LAVATORY SYSTEM

**AIRPLANE MAINTENANCE:** YES

**COMPONENT MAINTENANCE:** NO

**USAGE & DESCRIPTION:** The A38012-1 or -18 pump equipment is used on 757-200 and -300 airplanes equipped with vacuum waste systems, line number 916 and on. A38012 is used for the removal of sludge build-up on the inner surfaces of waste lines. The A38012-1 pump equipment is used for static soaking only. The A38012 -18 pump equipment is used for recirculating chemical soaking only. Refer to AMM 38-32-30 for complete usage instructions. A38012-1 and -18 consists of:

<b>A38012-1</b>		
<b>QUANTITY</b>	<b>NOMENCLATURE</b>	<b>PART NUMBER</b>
1	DRUM PUMP ASSEMBLY	A38012-4
1	DRAIN HOSE ASSEMBLY	A38012-5
*[1]	FLUSH PLUG ASSEMBLY	A38012-6
*[1]	DRAIN VALVE ASSEMBLY	A38012-7
1	WATER SUPPLY ASSEMBLY	A38012-8
1	DRAIN END ASSEMBLY	A38012-9
1	AIR ASSEMBLY	A38012-10
*[1]	PLUG ASSEMBLY	A38012-11
*[1]	VENT ASSEMBLY	A38012-12
1	STORAGE BOX	

\*[1] QUANTITY IS BASED ON THE AIRLINE'S MAINTENANCE PROCESSES AND AIRPLANE CONFIGURATION

<b>A38012-18</b>		
<b>QUANTITY</b>	<b>NOMENCLATURE</b>	<b>PART NUMBER</b>
*[1]	FLUSH PLUG ASSEMBLY	A38012-6
1	WATER SUPPLY ASSEMBLY	A38012-8
1	AIR ASSEMBLY	A38012-10
1	DRUM PUMP ASSEMBLY	A38012-21
2	DRAIN HOSE ASSEMBLY	A38012-22
*[1]	DRAIN VALVE ASSEMBLY	A38012-23
	DRAIN END ASSEMBLY	A38012-24
*[1]	PLUG ASSEMBLY	A38012-25
*[1]	JUMPER ASSEMBLY	A38012-26





757

**ILLUSTRATED TOOL AND EQUIPMENT MANUAL**

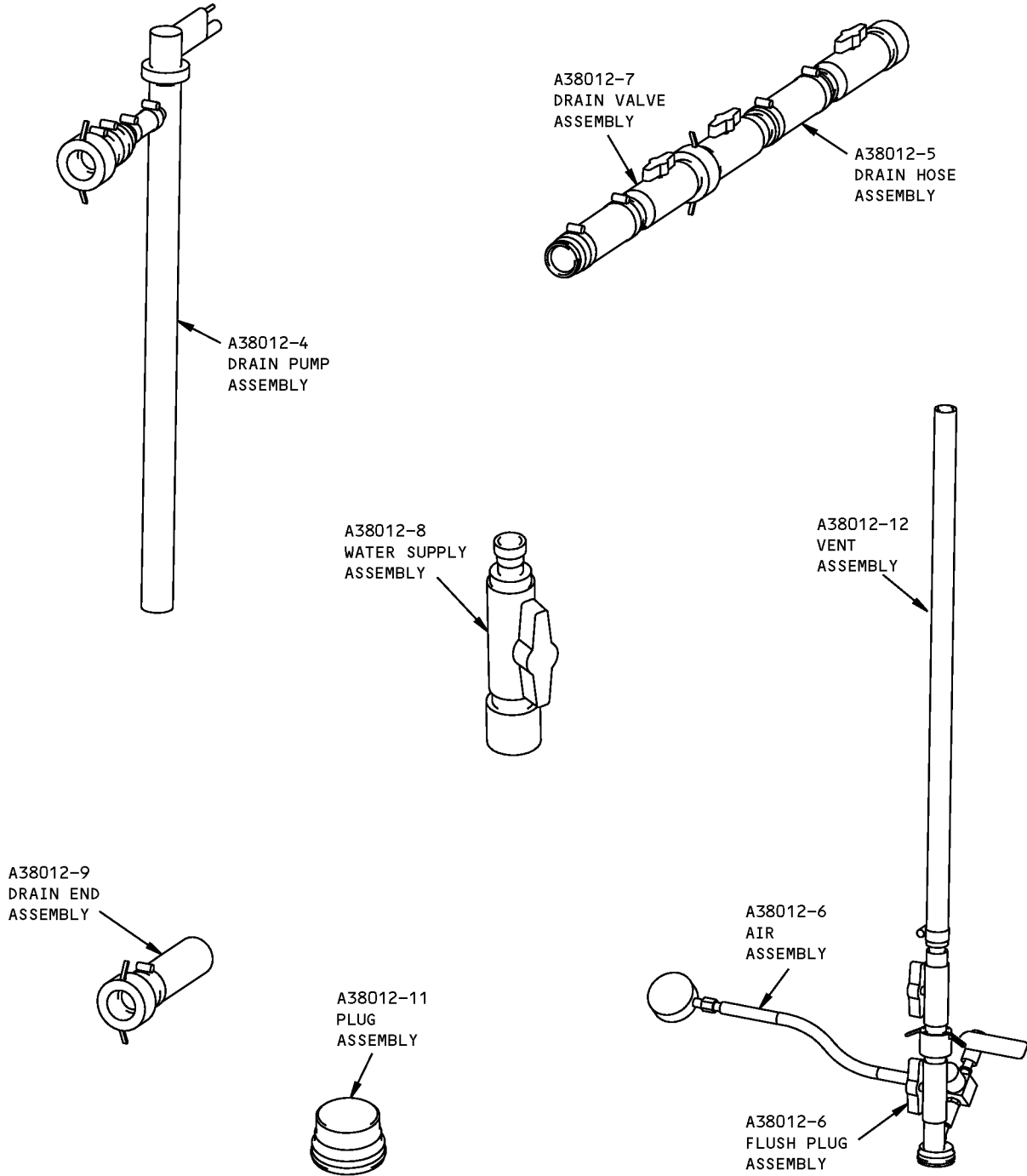
A38012-18		
QUANTITY	NOMENCLATURE	PART NUMBER
*[1]	REPLACEMENT JUMPER MALE/MALE ASSEMBLY	A38012-29
*[1]	REPLACEMENT JUMPER MALE/FEMALE ASSEMBLY	A38012-30
1	STORAGE BOX	

\*[1] QUANTITY IS BASED ON THE AIRLINE'S MAINTENANCE PROCESSES AND AIRPLANE CONFIGURATION

**WEIGHT:** 300 lbs (136 kg)

**DIMENSIONS:** 24 x 24 x 36 inches (610 x 610 x 914 mm)

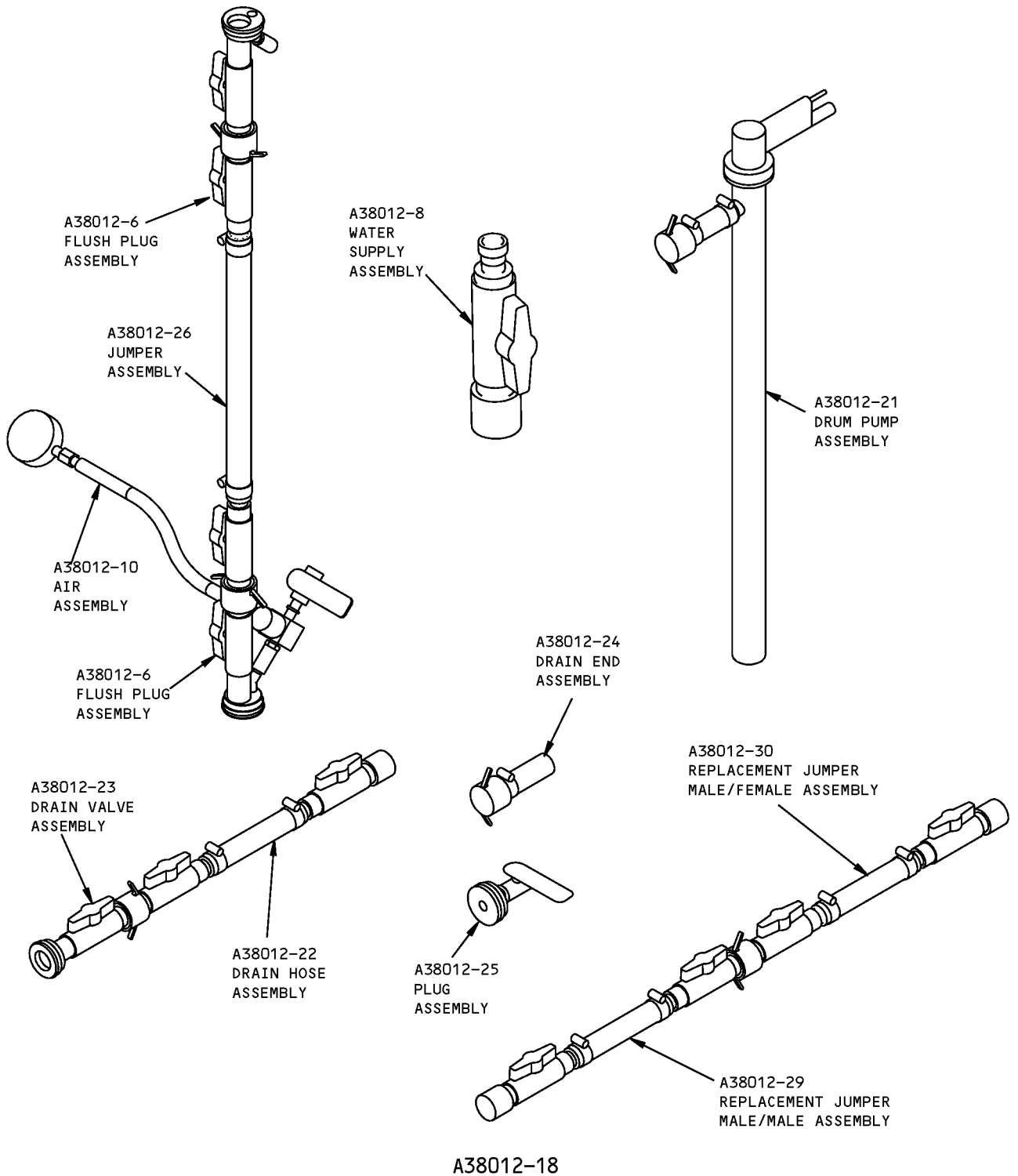
**ILLUSTRATED TOOL AND EQUIPMENT MANUAL**



A38012-1

**Vacuum Lavatory System Pump Equipment  
Figure 1 (Sheet 1 of 2)**

**ILLUSTRATED TOOL AND EQUIPMENT MANUAL**



**Vacuum Lavatory System Pump Equipment  
Figure 1 (Sheet 2 of 2)**



757

## ILLUSTRATED TOOL AND EQUIPMENT MANUAL

**PART NUMBER:** G38005-1, -111, -114, -115

**NAME:** TEST CHAMBER EQUIPMENT - LAVATORY SERVICE PANEL

**AIRPLANE MAINTENANCE:** YES

**COMPONENT MAINTENANCE:** NO

**USAGE & DESCRIPTION:** The G38005-1 or G38005-111 (preferred) test chamber equipment is used with the G38005-114 adapter equipment on 757-200 and 757-200 freighter airplanes. The G38005-115 adapter equipment is used with either G38005-1 or G38005-111 (preferred) test chamber equipment on the 757-200 freighter airplanes. G38005 is not applicable to 757-200 or -300 passenger series airplanes with a vacuum waste system, line number 916 and on. G38005 is used for leak testing the waste drain and flush/fill connections at the lavatory service panels. Refer to the current G38005 drawing for complete usage instructions. G38005-1, -111, -114 and -115 consists of:

<b>G38005-1 TEST CHAMBER EQUIPMENT</b>		
<b>QUANTITY</b>	<b>NOMENCLATURE</b>	<b>PART NUMBER</b>
1	CHAMBER ASSEMBLY	G38005-52
2	PUMP ASSEMBLY	G38005-53
2	AIR FILTER ASSEMBLY	G38005-54
1	STORAGE BOX	

<b>G38005-111 TEST CHAMBER EQUIPMENT</b>		
<b>QUANTITY</b>	<b>NOMENCLATURE</b>	<b>PART NUMBER</b>
1	CHAMBER ASSEMBLY	G38005-112
2	PUMP ASSEMBLY	G38005-53
2	AIR FILTER ASSEMBLY	G38005-54
1	STORAGE BOX	

<b>G38005-114 ADAPTER EQUIPMENT</b>		
<b>QUANTITY</b>	<b>NOMENCLATURE</b>	<b>PART NUMBER</b>
1	757 STATION 425 ADAPTER	G38005-116
1	757 STATION 710 ADAPTER	G38005-117
1	757 STATION 1200 ADAPTER	G38005-118
1	757 STATION 1690 ADAPTER	G38005-119
1	STORAGE BOX	



757

**ILLUSTRATED TOOL AND EQUIPMENT MANUAL**

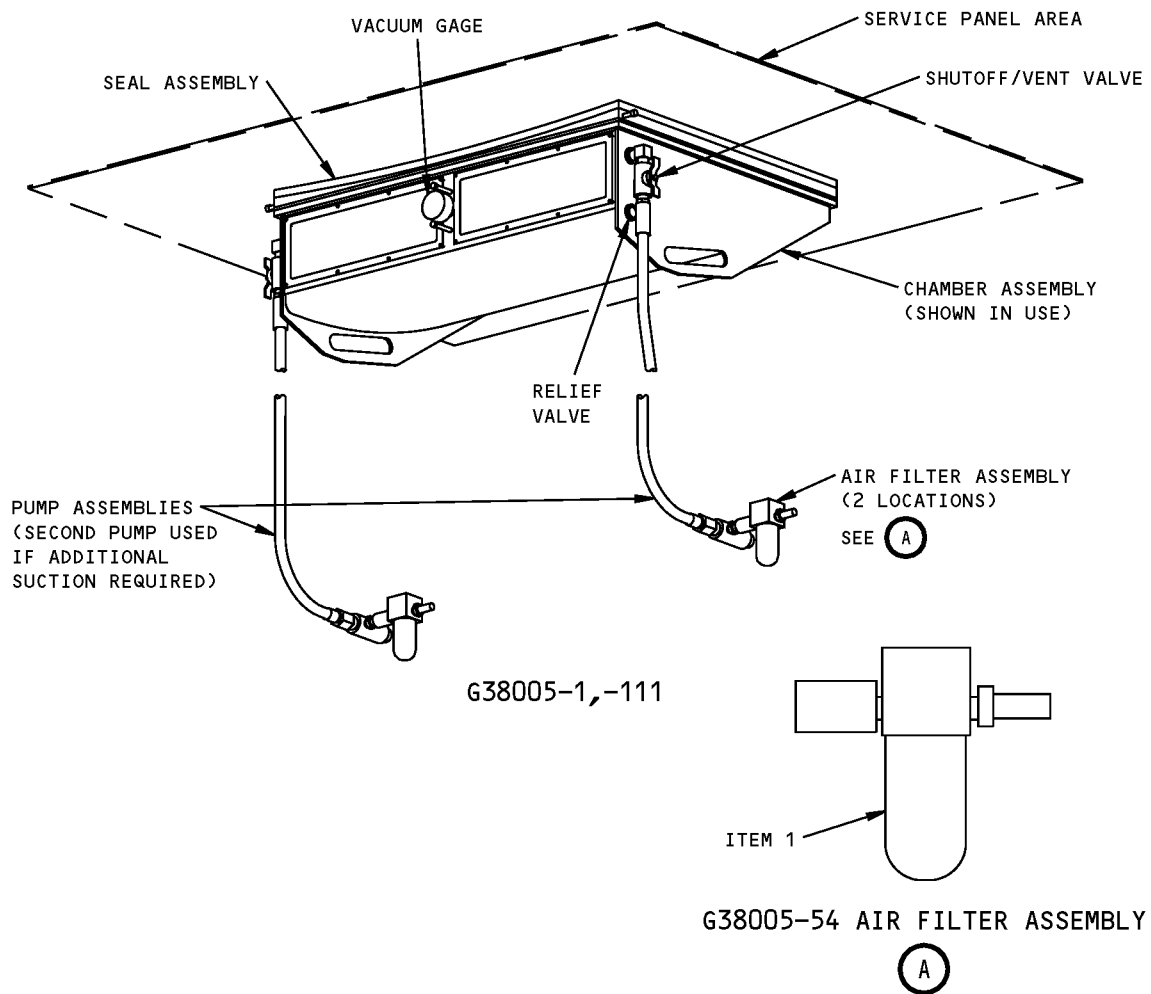
<b>G38005-154 ADAPTER EQUIPMENT</b>		
<b>QUANTITY</b>	<b>NOMENCLATURE</b>	<b>PART NUMBER</b>
1	757 STATION 710 ADAPTER	G38005-117
1	STORAGE BOX	

**WEIGHT:**  
G38005-1 - 30 lbs (14 kg)  
G38005-111 - 30 lbs (14 kg)  
G38005-114 - 46 lbs (21 kg)  
G38005-115 - 11 lbs (5 kg)

**DIMENSIONS:**  
G38005-1 - 9 x 21 x 32 (229 x 533 x 813 mm)  
G38005-111 - 9 x 21 x 32 (229 x 533 x 813 mm)  
G38005-114 - 11 x 21 x 28 (279 x 533 x 711)  
G38005-115 - 3 x 21 x 28 (76 x 533 x 711)

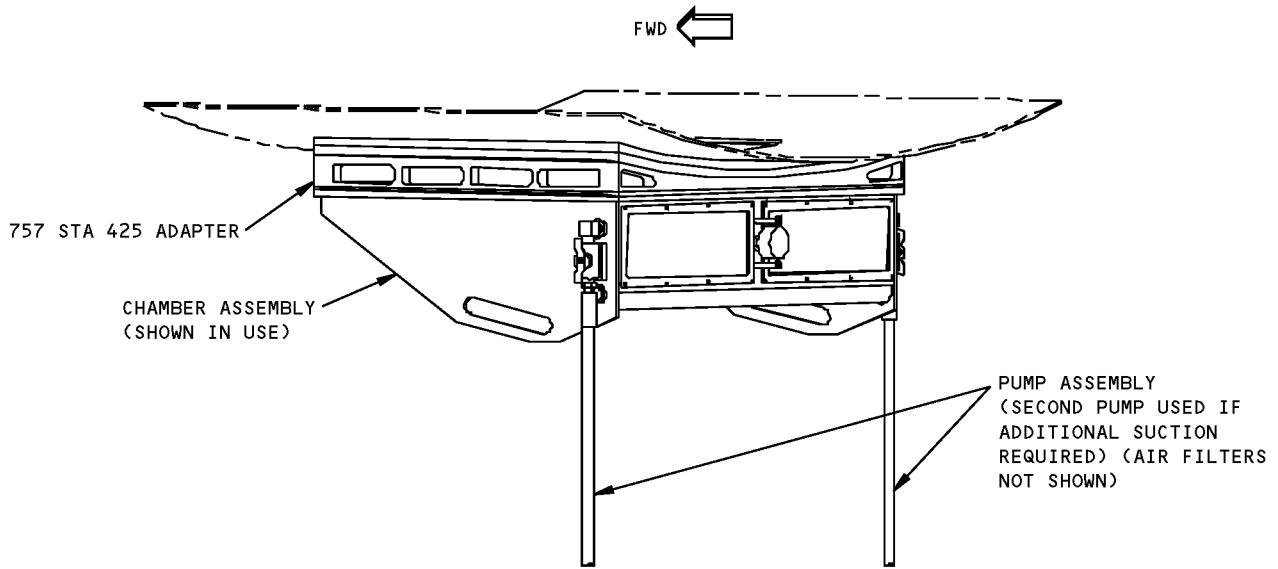
**NOTE:** G38005-111 replaces G38005-1 for future procurement.

**757**  
**ILLUSTRATED TOOL AND EQUIPMENT MANUAL**

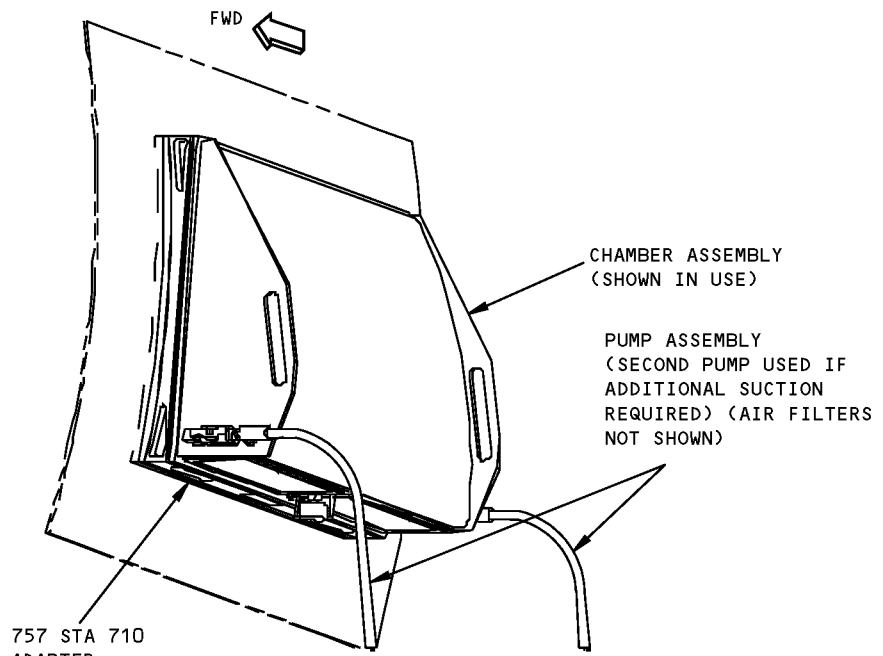


**Lavatory Service Panel Test Chamber Equipment**  
**Figure 1 (Sheet 1 of 3)**

**757  
ILLUSTRATED TOOL AND EQUIPMENT MANUAL**



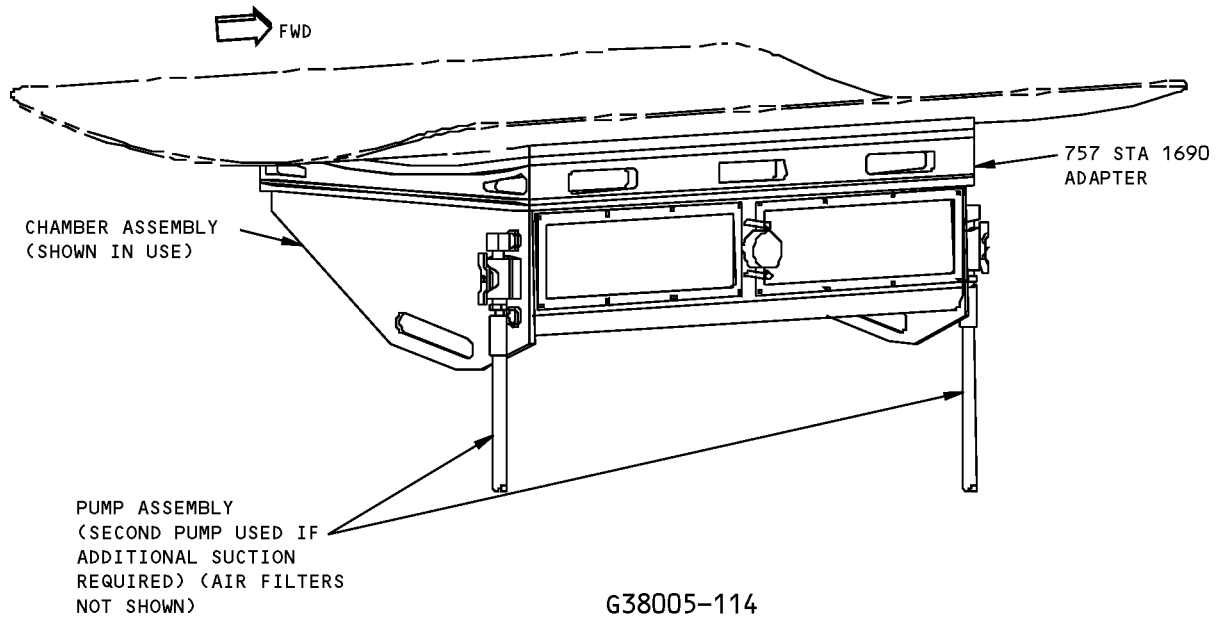
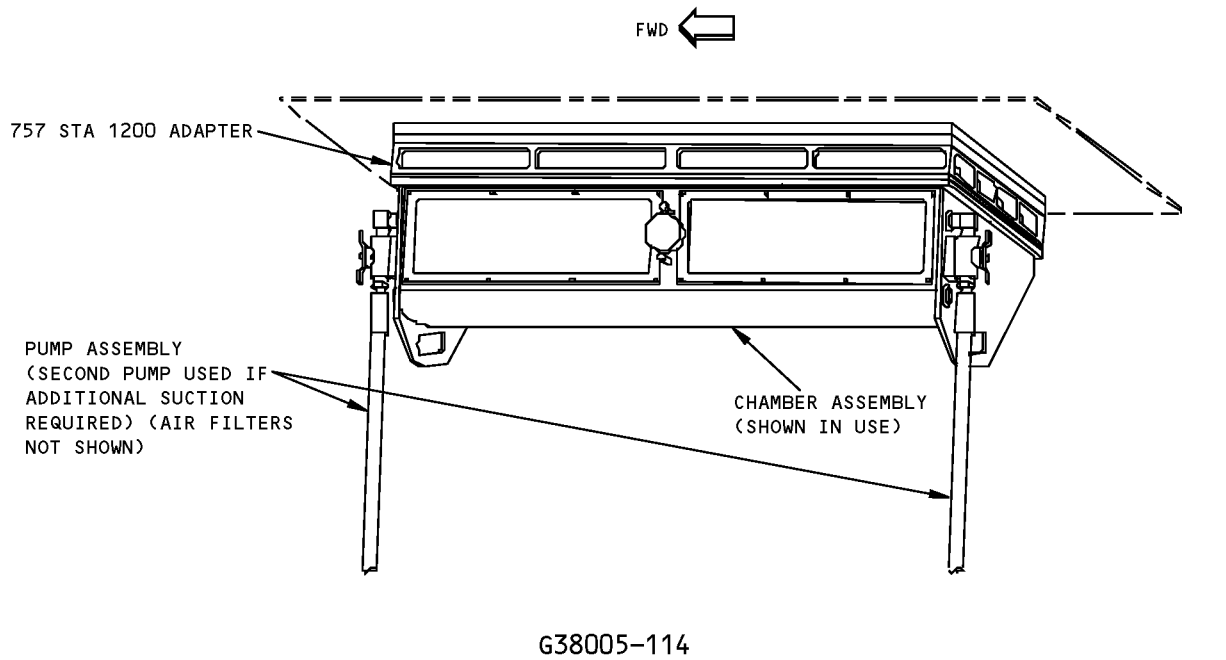
G38005-114,-115



G38005-114

**Lavatory Service Panel Test Chamber Equipment  
Figure 1 (Sheet 2 of 3)**

**757  
ILLUSTRATED TOOL AND EQUIPMENT MANUAL**



**Lavatory Service Panel Test Chamber Equipment  
Figure 1 (Sheet 3 of 3)**





757

ILLUSTRATED TOOL AND EQUIPMENT MANUAL

REPAIRABLE/REPLACEABLE PARTS			
ITEM NO.	PART NO.	NOMENCLATURE	VENDOR CODE
1	NAF2000-01	AIR FILTER	V55470



757

## ILLUSTRATED TOOL AND EQUIPMENT MANUAL

**PART NUMBER: A38009-11**

**NAME:** SENSOR CLEANER - LAVATORY WASTE TANK

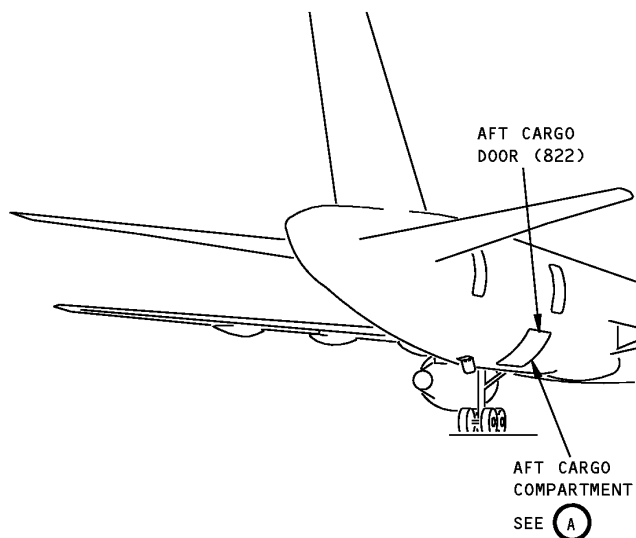
**AIRPLANE MAINTENANCE:** YES

**COMPONENT MAINTENANCE:** NO

**USAGE & DESCRIPTION:** A38009-11 sensor cleaner is used on all 757-200 and -300 airplanes with a vacuum waste system, line number 916 and on. A38009 is used to clean the tank sensors mounted inside the waste tank. Refer to AMM 38-32-37 for complete usage instructions. The A38009-11 sensor cleaner consists of an A38009-12 hose assembly contained in a storage box.

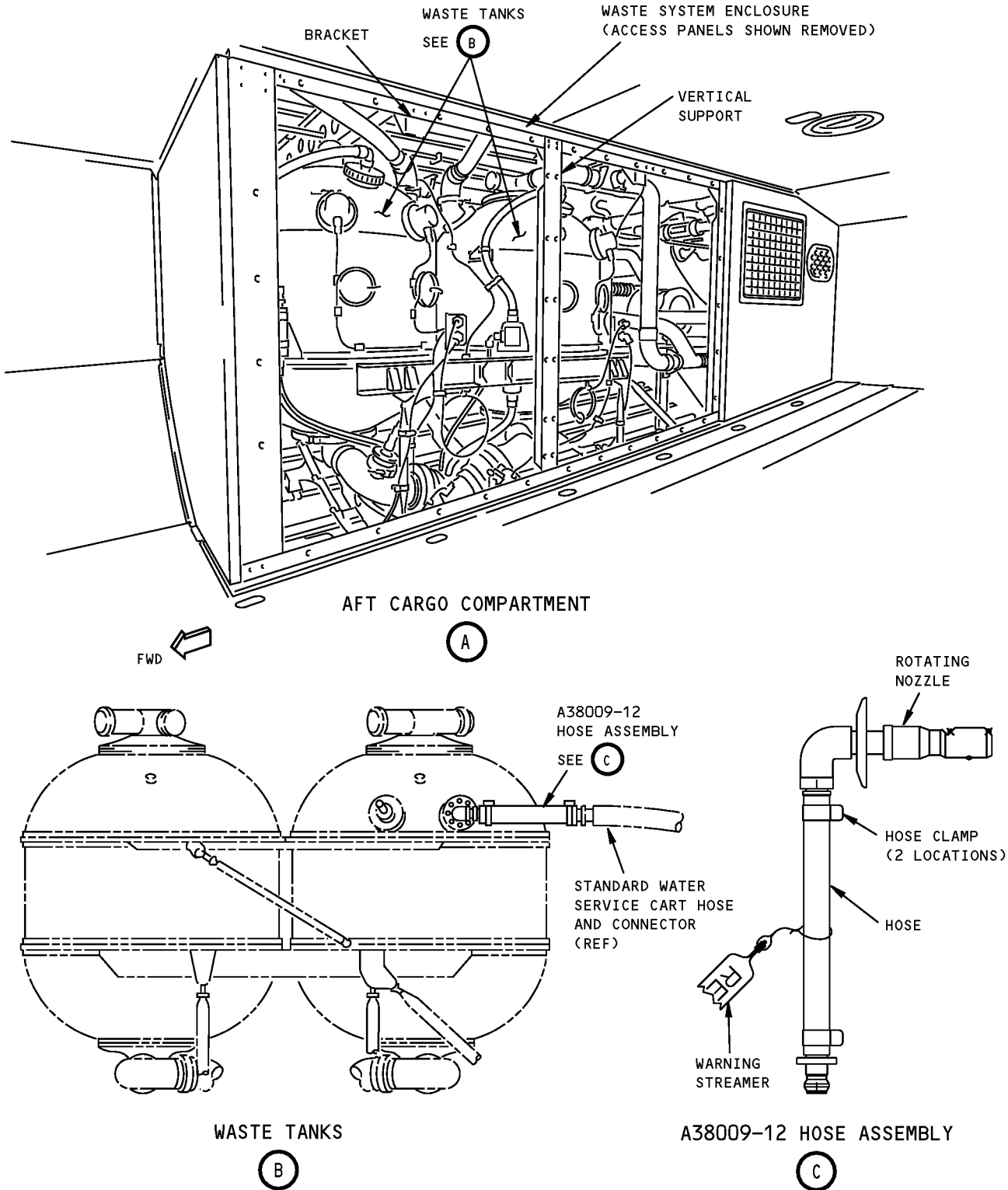
**WEIGHT:** 20 lbs (9 kg)

**DIMENSIONS:** 5 x 14 x 16 inches (127 x 356 x 406 mm)



**Lavatory Waste Tank Sensor Cleaner  
Figure 1 (Sheet 1 of 2)**

**ILLUSTRATED TOOL AND EQUIPMENT MANUAL**



**Lavatory Waste Tank Sensor Cleaner  
Figure 1 (Sheet 2 of 2)**