

CHAPTER

51

STRUCTURES



757
ILLUSTRATED TOOL AND EQUIPMENT MANUAL

CHAPTER 51
STRUCTURES

Subject/Page	Date	Subject/Page	Date	Subject/Page	Date
EFFECTIVE PAGES					
1	Sep 20/2008				
2	BLANK				
51-CONTENTS					
1	Sep 20/2006				
2	BLANK				
51-00-01					
1	Sep 20/2006				
2	Sep 20/2006				
51-00-02					
1	Sep 20/2006				
2	Sep 20/2006				
3	Sep 20/2006				
4	BLANK				
51-20-01					
1	Sep 20/2006				
2	BLANK				
51-60-01					
R 1	Sep 20/2008				
R 2	Sep 20/2008				

A = Added, R = Revised, O = Overflow, D = Deleted

51-EFFECTIVE PAGES

Page 1
Sep 20/2008

D634N501



757
ILLUSTRATED TOOL AND EQUIPMENT MANUAL

TABLE OF CONTENTS

<u>Subject</u>	<u>Title</u>	<u>Part No.</u>
51-	STRUCTURES	
51-00-01	FALL PROTECTION - OVERHEAD PERSONNEL SUPPORT	G51003-1
51-00-02	FALL PROTECTION - OVERHEAD PERSONNEL SUPPORT	G51002-1
51-20-01	PROBE - FILM RESISTANCE MEASURING	F70328-1
51-60-01	STATIC BALANCE EQUIPMENT - CONTROL SURFACES	F70330-4, -99

51-CONTENTS



757
ILLUSTRATED TOOL AND EQUIPMENT MANUAL

PART NUMBER: G51003-1

NAME: FALL PROTECTION - OVERHEAD PERSONNEL SUPPORT

AIRPLANE MAINTENANCE: YES

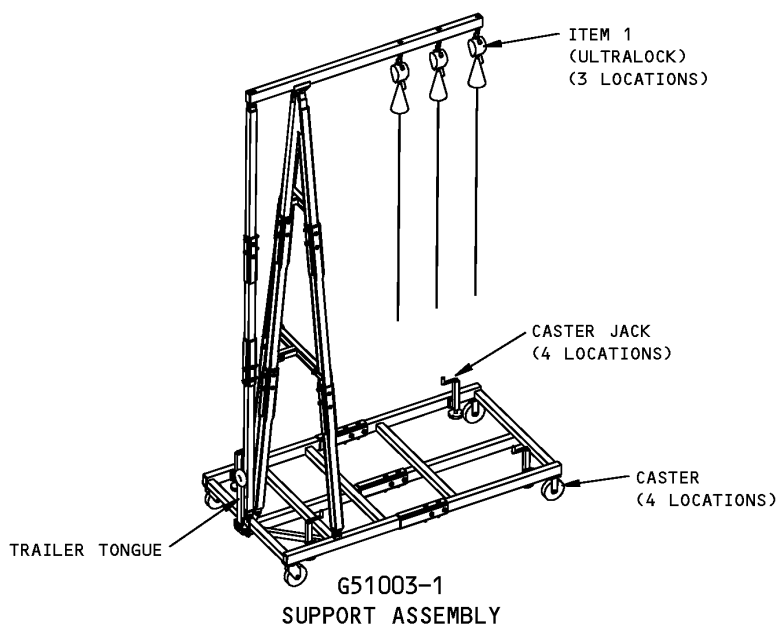
COMPONENT MAINTENANCE: NO

USAGE & DESCRIPTION: The G51003-1 fall protection is used on all 757 airplanes. The G51003 is used to provide fall protection for personnel working on airplane engines. The G51003-1 is a bolted-aluminum frame, gantry-like structure that mounts three Ultralock, dynamic brakes, attached to customer-furnished safety harnesses. G51003 is ramp equipment. The G51003 includes casters, a trailer tongue for towing and caster jacks, to raise the gantry above the casters and stabilize the structure in place.

WEIGHT: 2500 lbs (1134 kg)

DIMENSIONS: 108 x 170 x 297 inches (2743 x 4318 x 7544 mm)

NOTE: G51003 replaces G51002 for future procurement.



**Overhead Personnel Support Fall Protection
Figure 1**

1



757
ILLUSTRATED TOOL AND EQUIPMENT MANUAL

REPAIRABLE/REPLACEABLE PARTS			
ITEM NO.	PART NO.	NOMENCLATURE	VENDOR CODE
1	L3920G-20	ULTRALOCK	DBI SALA RED WING, MN



757

ILLUSTRATED TOOL AND EQUIPMENT MANUAL

PART NUMBER: G51002-1

NAME: FALL PROTECTION - OVERHEAD PERSONNEL SUPPORT

AIRPLANE MAINTENANCE: YES

COMPONENT MAINTENANCE: NO

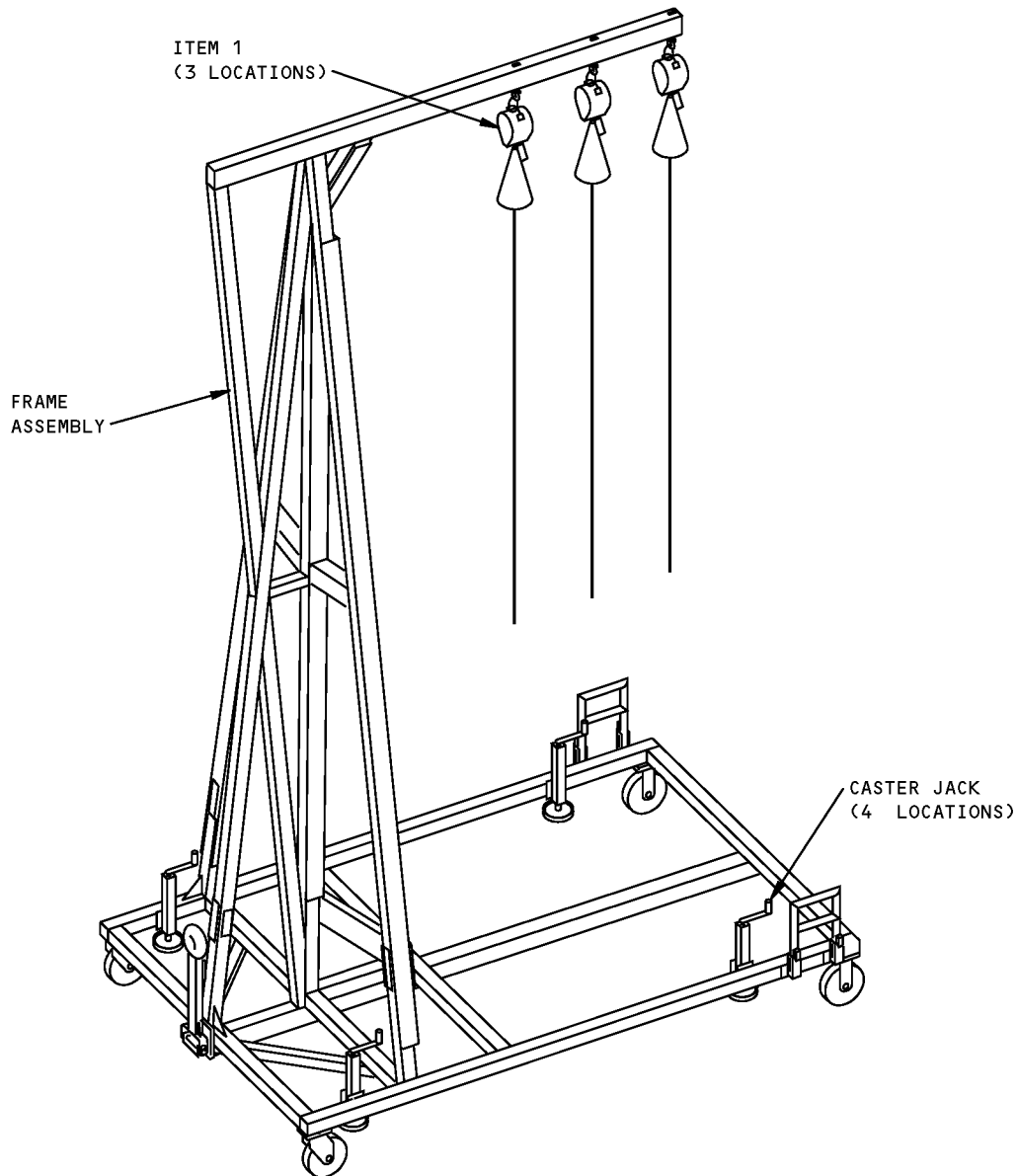
USAGE & DESCRIPTION: The G51002-1 fall protection overhead personnel support is used on all 757 airplanes. G51002 is used to provide fall protection for personnel working on the aircraft propulsion systems. G51002 is ramp equipment. G51002 includes casters, a trailer tongue for towing and caster jacks, to raise the gantry above the casters and stabilize the structure in place.

WEIGHT: 1850 lbs (839 kg)

DIMENSIONS: 108 x 170 x 297 inches (2743 x 4318 x 7544 mm)

NOTE: G51003 replaces G51002 for future procurement.

757
ILLUSTRATED TOOL AND EQUIPMENT MANUAL



Overhead Personnel Support Fall Protection
Figure 1



757

ILLUSTRATED TOOL AND EQUIPMENT MANUAL

REPAIRABLE/REPLACEABLE PARTS			
ITEM NO.	PART NO.	NOMENCLATURE	VENDOR CODE
1	L3920G-20	ULTRALOCK	DBI SALA RED WING, MN



757
ILLUSTRATED TOOL AND EQUIPMENT MANUAL

PART NUMBER: F70328-1

NAME: PROBE - FILM RESISTANCE MEASURING

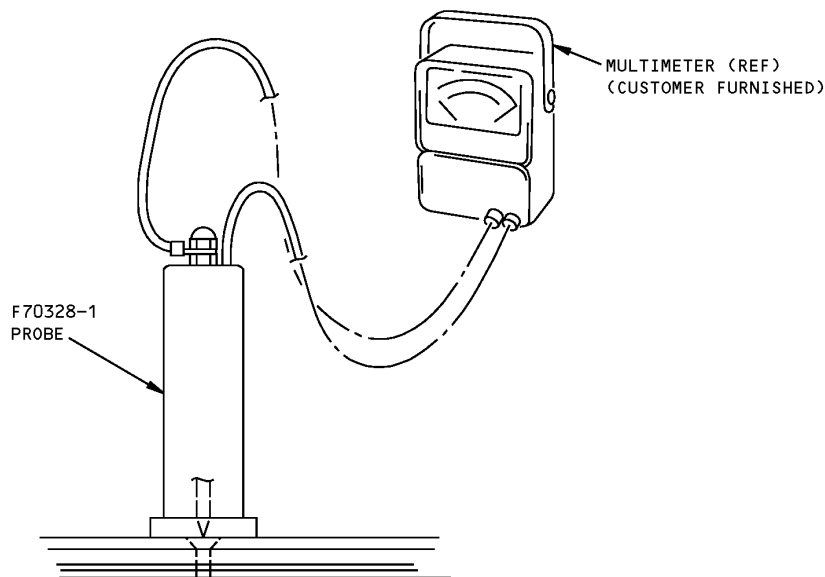
AIRPLANE MAINTENANCE: YES

COMPONENT MAINTENANCE: NO

USAGE & DESCRIPTION: The F70328-1 probe is used on all 757 airplanes. F70328 is used to measure resistance of the electrical bond between conductive coating on non-conductive plastic sheeting and the grounding fasteners. Refer to AMM 51-24-02 for complete usage instructions. F70328-1 consists of a nylon-cylinder machined to hold the spring-loaded brass probe. The nylon cylinder is capped by a brass collar to hold the probe. Electrical leads from the probe and retaining collar attach to a customer-furnished multimeter.

DIMENSIONS: 7 x 7 x 11 inches (178 x 178 x 279 mm)

NOTE: F70328-1 replaces ST-895-A1 for future procurement.



Film Resistance Measuring Probe
Figure 1



757

ILLUSTRATED TOOL AND EQUIPMENT MANUAL

PART NUMBER: F70330-4, -99

NAME: STATIC BALANCE EQUIPMENT - CONTROL SURFACES

AIRPLANE MAINTENANCE: YES

COMPONENT MAINTENANCE: NO

USAGE & DESCRIPTION:

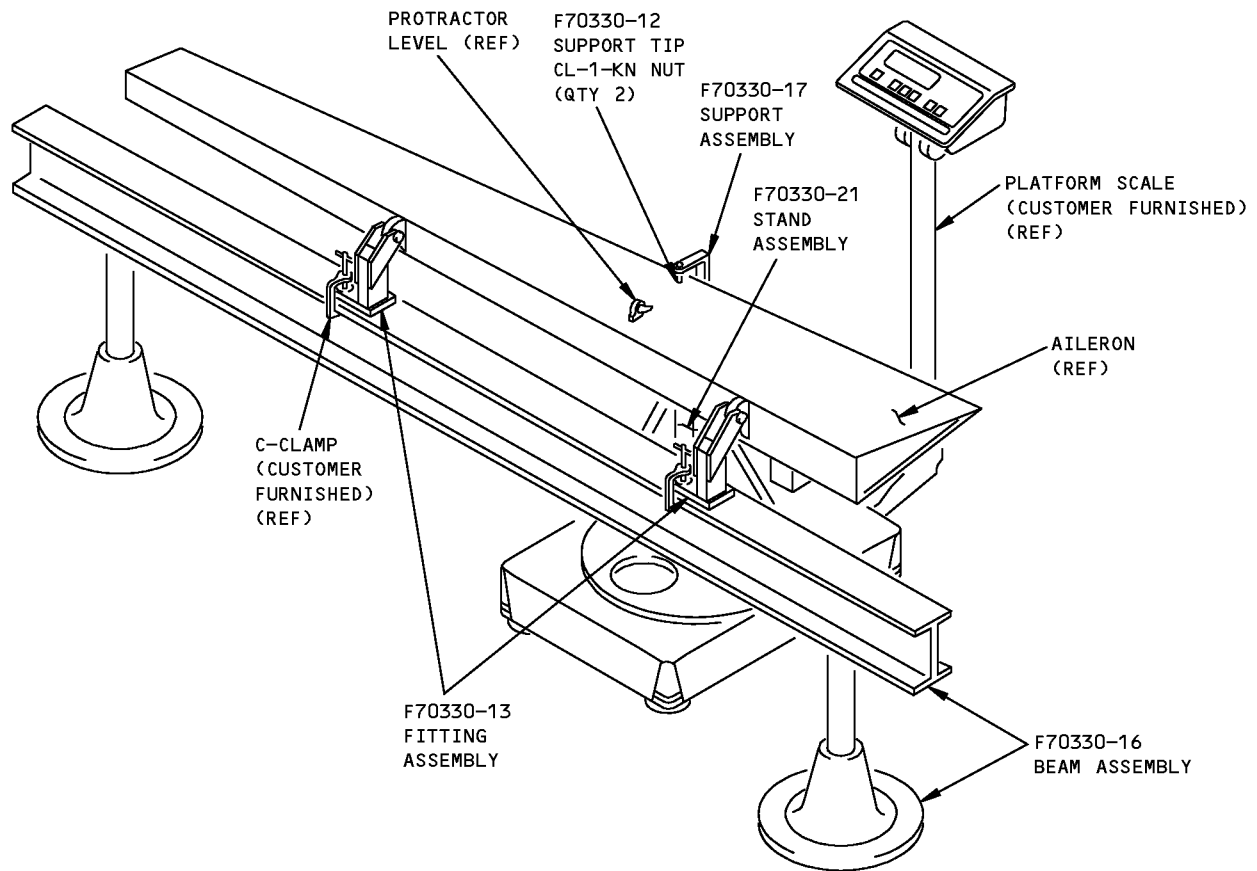
The F70330-4 "beam and accessories" and -99 "757 kit" static balance equipment are used together on all 757 airplanes. F70330 is used in conjunction with a customer-furnished scale and "C" clamps to support control surfaces for control surface balancing. The F70330-4 beam and accessories equipment contains parts for use in balancing control surfaces for a number of different airplanes and contains tools that are not required for the 757. Refer to the current F70330 drawing and the Structural Repair Manual, SRM 51-60-01 for complete usage instructions. F70330-4 and -99 consist of:

F70330-4 BEAM AND ACCESSORIES		
QUANTITY	NOMENCLATURE	PART NUMBER
2	SUPPORT TIP	F70330-12
1 ^{*[1]}	BEAM ASSEMBLY	F70330-16
1	SUPPORT ASSEMBLY	F70330-17
2	SUPPORT YOKE ASSEMBLY	F70330-18
2	SUPPORT BLADE ASSEMBLY	F70330-19
1 ^{*[1]}	STAND ASSEMBLY	F70330-21
1	BLOCK	F70330-22
1	BLOCK	F70330-23
4	NUT	CL-1-KN
1	STORAGE BOX	

^{*[1]} NOT STORED IN BOX

F70330-99 757 KIT		
QUANTITY	NOMENCLATURE	PART NUMBER
2	FITTING ASSEMBLY	F70330-13
4	WASHER	AN960-416L
1	STORAGE BOX	

757
ILLUSTRATED TOOL AND EQUIPMENT MANUAL



L91242 S0000213758_V2

Control Surfaces Static Balance Equipment
Figure 1