

CHAPTER

52

DOORS



757
ILLUSTRATED TOOL AND EQUIPMENT MANUAL

CHAPTER 52
DOORS

Subject/Page	Date	Subject/Page	Date	Subject/Page	Date
EFFECTIVE PAGES		52-10-10		52-30-04	
1 thru 2	Sep 20/2008	1	Sep 20/2006	1	Sep 20/2006
52-CONTENTS		2	Sep 20/2006	2	Sep 20/2006
O 1	Sep 20/2008	3	Sep 20/2006	3	Sep 20/2006
2	Sep 20/2006	4	BLANK	4	BLANK
52-00-01		52-10-11		52-30-05	
1	Sep 20/2006	O 1	Sep 20/2008	1	Sep 20/2006
2	Sep 20/2006	2	Sep 20/2006	2	BLANK
52-00-02		3	Sep 20/2006	52-30-06	
1	Sep 20/2006	4	Sep 20/2006	1	Sep 20/2006
2	BLANK	52-10-12		2	Sep 20/2006
52-10-01		1	Sep 20/2006	52-30-07	
1	Sep 20/2006	2	Sep 20/2006	1	Sep 20/2006
2	Sep 20/2006	52-10-13		2	BLANK
52-10-02		1	Sep 20/2006	52-30-08	
1	Sep 20/2006	2	Sep 20/2006	1	Sep 20/2006
2	BLANK	52-10-14		2	Sep 20/2006
52-10-03		1	Sep 20/2006	52-30-09	
1	Sep 20/2006	2	Sep 20/2006	1	Sep 20/2006
2	BLANK	52-10-15		2	Sep 20/2006
52-10-04		1	Sep 20/2006	52-30-10	
1	Sep 20/2006	2	Sep 20/2006	1	Sep 20/2006
2	Sep 20/2006	52-20-01		2	BLANK
52-10-05		1	Sep 20/2006	52-30-11	
1	Sep 20/2006	2	BLANK	1	Sep 20/2006
2	BLANK	52-20-02		2	Sep 20/2006
52-10-06		1	Sep 20/2006	3	Sep 20/2006
1	Sep 20/2006	R 2	Sep 20/2008	4	BLANK
2	Sep 20/2006	52-20-03		52-30-12	
52-10-07		R 1	Sep 20/2008	1	Sep 20/2006
1	Sep 20/2006	R 2	Sep 20/2008	2	Sep 20/2006
2	BLANK	52-30-01		52-30-13	
52-10-08		1	Sep 20/2006	1	Sep 20/2006
1	Sep 20/2006	2	Sep 20/2006	2	Sep 20/2006
2	BLANK	52-30-02		52-40-01	
52-10-09		1	Sep 20/2006	1	Sep 20/2006
1	Sep 20/2006	2	BLANK	2	Sep 20/2006
2	BLANK	52-30-03		52-40-02	
		1	Sep 20/2006	1	Sep 20/2006
		2	BLANK	2	Sep 20/2006

A = Added, R = Revised, O = Overflow, D = Deleted

52-EFFECTIVE PAGES



757
ILLUSTRATED TOOL AND EQUIPMENT MANUAL

CHAPTER 52
DOORS

Subject/Page	Date	Subject/Page	Date	Subject/Page	Date
52-50-01					
1	Sep 20/2006				
2	Sep 20/2006				

A = Added, R = Revised, O = Overflow, D = Deleted

52-EFFECTIVE PAGES

Page 2
Sep 20/2008

D634N501



757

ILLUSTRATED TOOL AND EQUIPMENT MANUAL

TABLE OF CONTENTS

<u>Subject</u>	<u>Title</u>	<u>Part No.</u>
52-	DOORS	
52-00-01	SLING - PASSENGER DOOR	B52001-1
52-00-02	INSTALLATION TOOL - DOOR SEAL	B52004-1
52-10-01	SAFETY BARRIER - PASSENGER DOOR	B52003-15
52-10-03	SAFETY PIN SET - EMERGENCY POWER SYSTEM, ENTRY DOOR	B52009-1
52-10-04	WRENCH - GUIDE ARM INSTALLATION/REMOVAL, PASSENGER DOOR	B52012-1
52-10-06	COMPRESSOR - SPRING, PASSENGER DOOR COUNTERBALANCE	B52017-1
52-10-07	CANOPY - FORWARD ENTRY DOOR	F70324-1
52-10-08	SAFETY BARRIER - CREW ENTRY DOOR	B52019-14
52-10-09	SLING - CREW ENTRY DOOR	B52018-1
52-10-10	WRENCH - THRUST COLLAR	B52021-1
52-10-11	SPANNER WRENCH, HINGE NUT, NUMBER 1, 2 AND 4 DOORS	B52023-1, -5
52-10-12	SPANNER WRENCH - ASSIST HANDLE, MAIN ENTRY DOOR	F70336-1
52-10-13	RIGGING SIMULATOR - ESCAPE SLIDE, PASSENGER DOOR	B52027-1
52-10-14	CANOPY EQUIPMENT - NUMBER 2 LEFT HAND PASSENGER ENTRY DOOR	B52028-1
52-10-15	TORQUE WRENCH ASSEMBLY - GALLEY AND ENTRY DOOR	C52008-1
52-20-01	SUPPORT ASSEMBLY - NUMBER 3 EMERGENCY DOOR	B52013-6
52-20-02	MEASUREMENT TOOL - EMERGENCY POWER RESERVOIR, CABLE TRAVEL	B52022-21
52-20-03	SAFETY BARRIER - NUMBER 3 EMERGENCY EXIT DOOR	B52015-9
52-30-01	CLAMP EQUIPMENT - SPRING INSTALLATION/REMOVAL, BULK CARGO DOOR	A52010-49, -51
52-30-02	SAFETY BARRIER - CARGO DOOR, FORWARD OR AFT	B52005-19
52-30-03	ADAPTER - CLOCKING, NUMBER 1 AND 2 CARGO DOOR ROTARY ACTUATOR	B52008-1
52-30-04	FIXTURE - BACKLASH, NUMBER 1 & 2 DOOR MANUAL DRIVE GEARBOX ASSEMBLY	B52010-1
52-30-05	SAFETY BARRIER - NUMBER 3 CARGO DOOR	B52011-1
52-30-06	REPLACEMENT EQUIPMENT - BULK CARGO DOOR	B52014-1
52-30-07	SLING - MAIN CARGO DOOR	B52016-1
52-30-08	SLING - MAIN CARGO DOOR	B52002-1
52-30-09	LIFTING FIXTURE ASSEMBLY - MAIN CARGO DOOR	F70250-35, -36
52-30-10	PERSONNEL SAFETY BARRIER - MAIN DECK CARGO DOOR	F70258-1

52-CONTENTS



757

ILLUSTRATED TOOL AND EQUIPMENT MANUAL

<u>Subject</u>	<u>Title</u>	<u>Part No.</u>
52-30-11	ROTATION EQUIPMENT - MAIN CARGO DOOR LATCHES	B52020-1
52-30-12	LIFTING FIXTURE EQUIPMENT - MAIN DECK CARGO DOOR	C52009-2
52-30-13	WRENCH - SOCKET, ROD END BEARING	F71313-19, -44
52-40-01	SAFETY BARRIER - ELECTRICAL/ELECTRONIC ACCESS DOOR	B52006-1
52-40-02	SERVICE PLATFORMS - ELEVATOR/SERVICE ACCESS DOOR	B52026-1, -2
52-50-01	TEST BOX - FLIGHT DECK ACCESS SYSTEM (FDAS)	A52037-1

52-CONTENTS

Page 2
Sep 20/2006

D634N501



757

ILLUSTRATED TOOL AND EQUIPMENT MANUAL

PART NUMBER: B52001-1

NAME: SLING - PASSENGER DOOR

AIRPLANE MAINTENANCE: YES

COMPONENT MAINTENANCE: NO

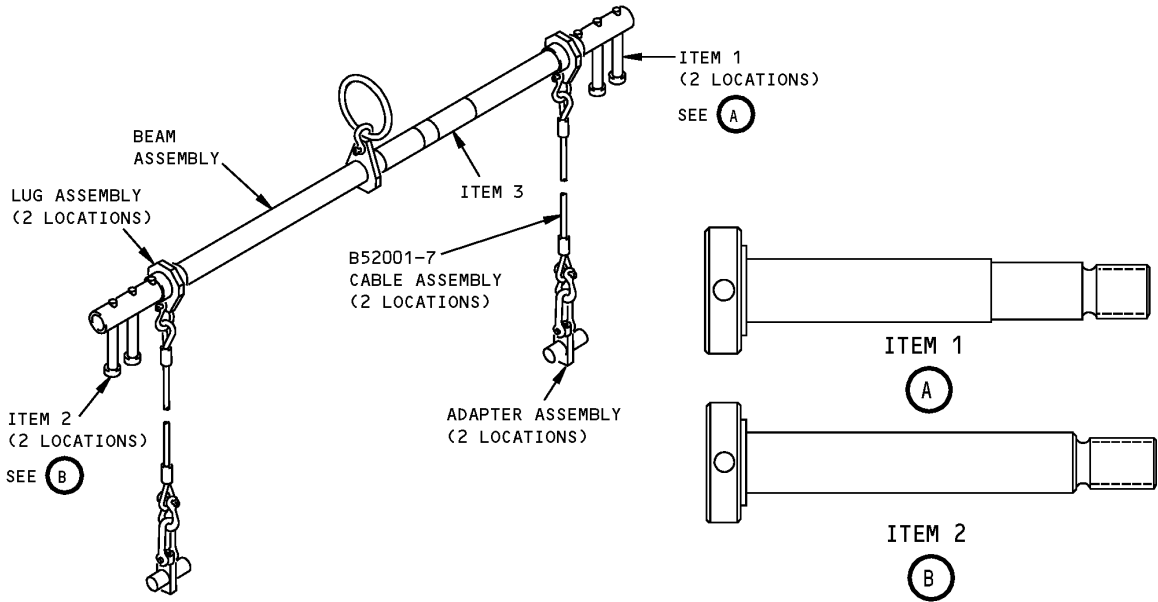
USAGE & DESCRIPTION: The B52001-1 sling is used on all 757 airplanes, except the 757-200 package freighter airplanes. B52001 is used with overhead lifting equipment to remove or install passenger doors. Refer to AMM 52-11-01 for complete usage instructions. B52001-1 consists of:

B52001-1		
QUANTITY	NOMENCLATURE	PART NUMBER
1	BEAM ASSEMBLY	B52001-2
2	LUG ASSEMBLY	B52001-3
2	ADAPTER ASSEMBLY	B52001-4
2	BOLT ASSEMBLY	B52001-5
2	BOLT ASSEMBLY	B52001-6
2	CABLE ASSEMBLY	B52001-7

WEIGHT: 20 lbs (9 kg)

DIMENSIONS: 6 x 9 x 56 inches (152 x 229 x 1422 mm)

ILLUSTRATED TOOL AND EQUIPMENT MANUAL



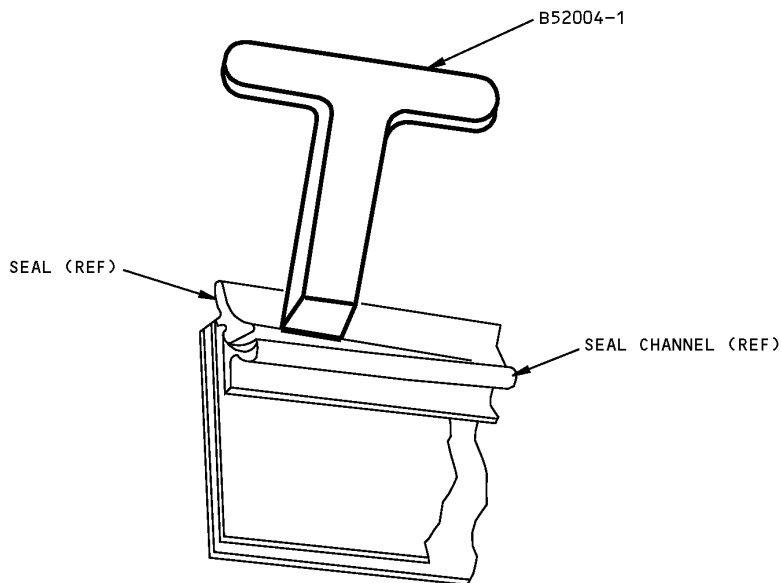
Passenger Door Sling
Figure 1

REPAIRABLE/REPLACEABLE PARTS			
ITEM NO.	PART NO.	NOMENCLATURE	VENDOR CODE
1	B52001-5	BOLT ASSEMBLY	
2	B52001-6	BOLT ASSEMBLY	

ILLUSTRATED TOOL AND EQUIPMENT MANUAL

PART NUMBER: B52004-1**NAME:** INSTALLATION TOOL - DOOR SEAL**AIRPLANE MAINTENANCE:** YES**COMPONENT MAINTENANCE:** YES

USAGE & DESCRIPTION: The B52004-1 installation tool is used on all 757 airplanes. B52004 is used to push the door seals into position in the door seal channel on exterior access and entry doors. Refer to AMM 52-09-04, CMM 52-11-05, CMM 52-11-07 and CMM 52-11-15 for complete usage instructions. B52004-1 consists of a single T-handle made of nylon, delrin or lexan.

WEIGHT: 1 lb (0.45 kg)**DIMENSIONS:** 1 x 5 x 5 inches (25 x 127 x 127 mm)

**Door Seal Installation Tool
Figure 1**

757
ILLUSTRATED TOOL AND EQUIPMENT MANUAL

PART NUMBER: B52003-15

NAME: SAFETY BARRIER - PASSENGER DOOR

AIRPLANE MAINTENANCE: YES

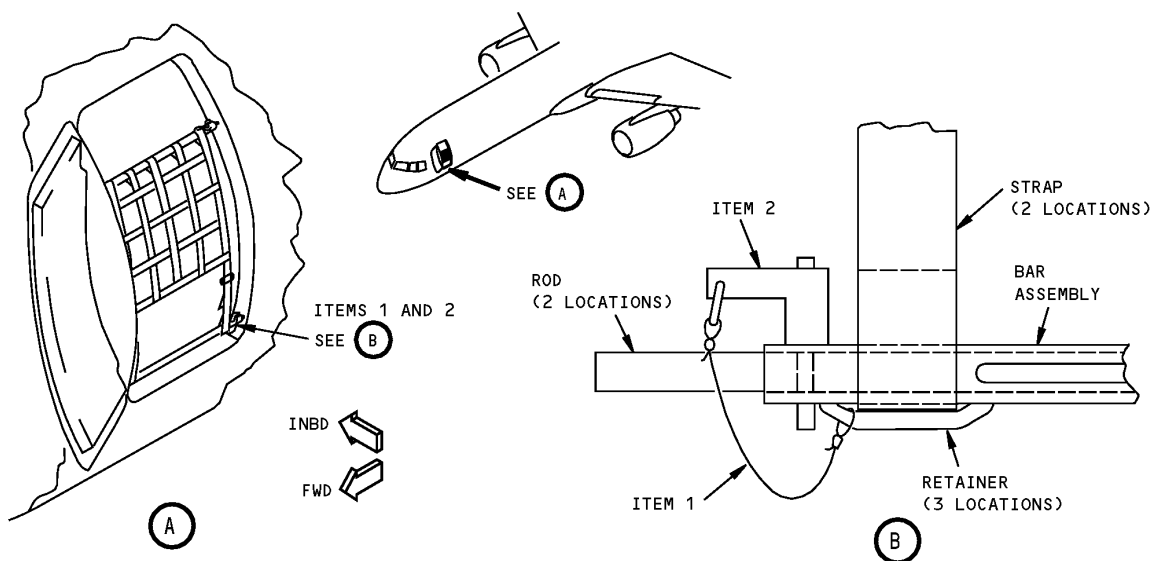
COMPONENT MAINTENANCE: NO

USAGE & DESCRIPTION: The B52003-15 safety barrier is used on all 757 airplanes, except the 757-200 package freighters. B52003 is used to prevent injury to personnel during maintenance on passenger doors at the number 1 left and right, 2 left and right and 4 left and right locations. Refer to AMM 52-11-01 for complete usage instructions. B52003 consists of a welded aluminum frame containing door frame lock fittings with web straps covering the door opening.

WEIGHT: 30 lbs (14 kg)

DIMENSIONS: 8 x 8 x 36 inches (203 x 203 x 914 mm)

NOTE: B52003-15 supersedes -12.



**Passenger Door Safety Barrier
Figure 1**

REPAIRABLE/REPLACEABLE PARTS			
ITEM NO.	PART NO.	NOMENCLATURE	VENDOR CODE
1	CL-22-KA-12.0LR	LANYARD	V99862



757

ILLUSTRATED TOOL AND EQUIPMENT MANUAL

REPAIRABLE/REPLACEABLE PARTS			
ITEM NO.	PART NO.	NOMENCLATURE	VENDOR CODE
2	NAS1334C5C1.50	BALL LOCK PIN	



757

ILLUSTRATED TOOL AND EQUIPMENT MANUAL

PART NUMBER: B52007-1 WAS MOVED TO 25-60-03

ILLUSTRATED TOOL AND EQUIPMENT MANUAL

PART NUMBER: B52009-1

NAME: SAFETY PIN SET - EMERGENCY POWER SYSTEM, ENTRY DOOR

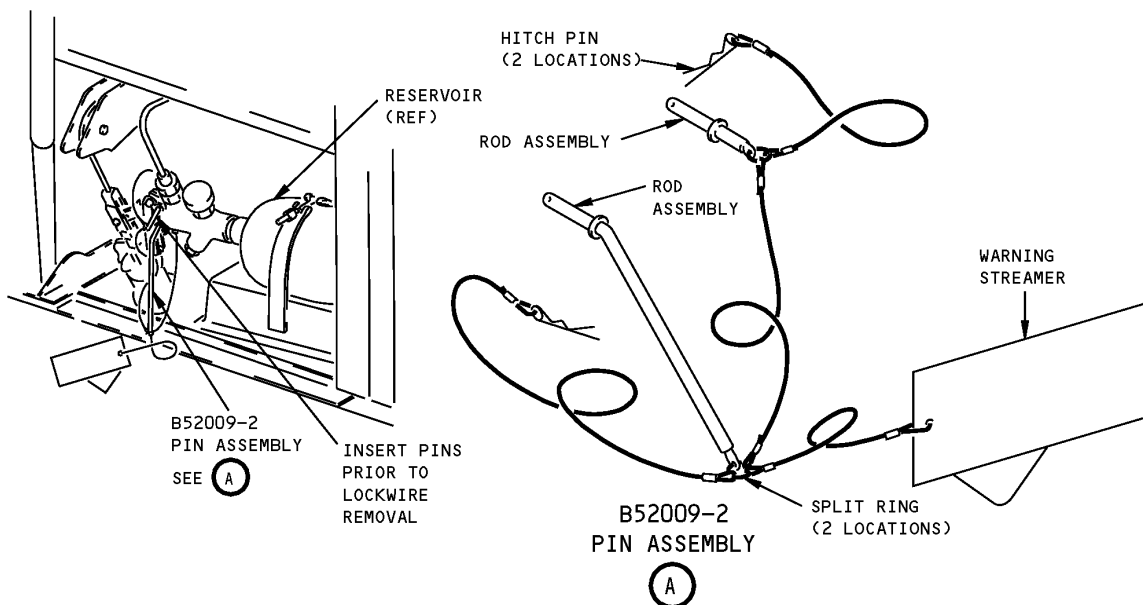
AIRPLANE MAINTENANCE: YES

COMPONENT MAINTENANCE: NO

USAGE & DESCRIPTION: The B52009-1 safety pin set is used on all 757 airplanes, except the 757-200 package freighter airplanes. The passenger doors on the 757 airplane incorporate an emergency mechanism to power the passenger doors to the open position. The emergency mechanism is powered by a high pressure air bottle. B52009 is used to prevent accidental firing of the high pressure air bottle. B52009 is used on the reservoir and the actuating lever mechanism prior to installation on the airplane. Refer to AMM 12-15-10, AMM 25-66-01, AMM 25-66-10, AMM 52-11-00, AMM 52-11-01, AMM 52-11-04, AMM 52-11-08, AMM 52-11-09, AMM 52-11-10, AMM 52-11-13 and AMM 52-11-30, AMM 52-11-31, AMM 52-11-33, AMM 52-11-34, AMM 52-11-35, AMM 52-11-36 for complete usage instructions. B52009-1 consists of six B52009-2 pin assemblies contained in a storage box.

WEIGHT: 1 lb (0.45 kg)

DIMENSIONS: 6 x 10 x 10 inches (152 x 254 x 254 mm)



**Entry Door Emergency Power System Safety Pin Set
Figure 1**



757

ILLUSTRATED TOOL AND EQUIPMENT MANUAL

PART NUMBER: B52012-1

NAME: WRENCH - GUIDE ARM INSTALLATION/REMOVAL, PASSENGER DOOR

AIRPLANE MAINTENANCE: YES

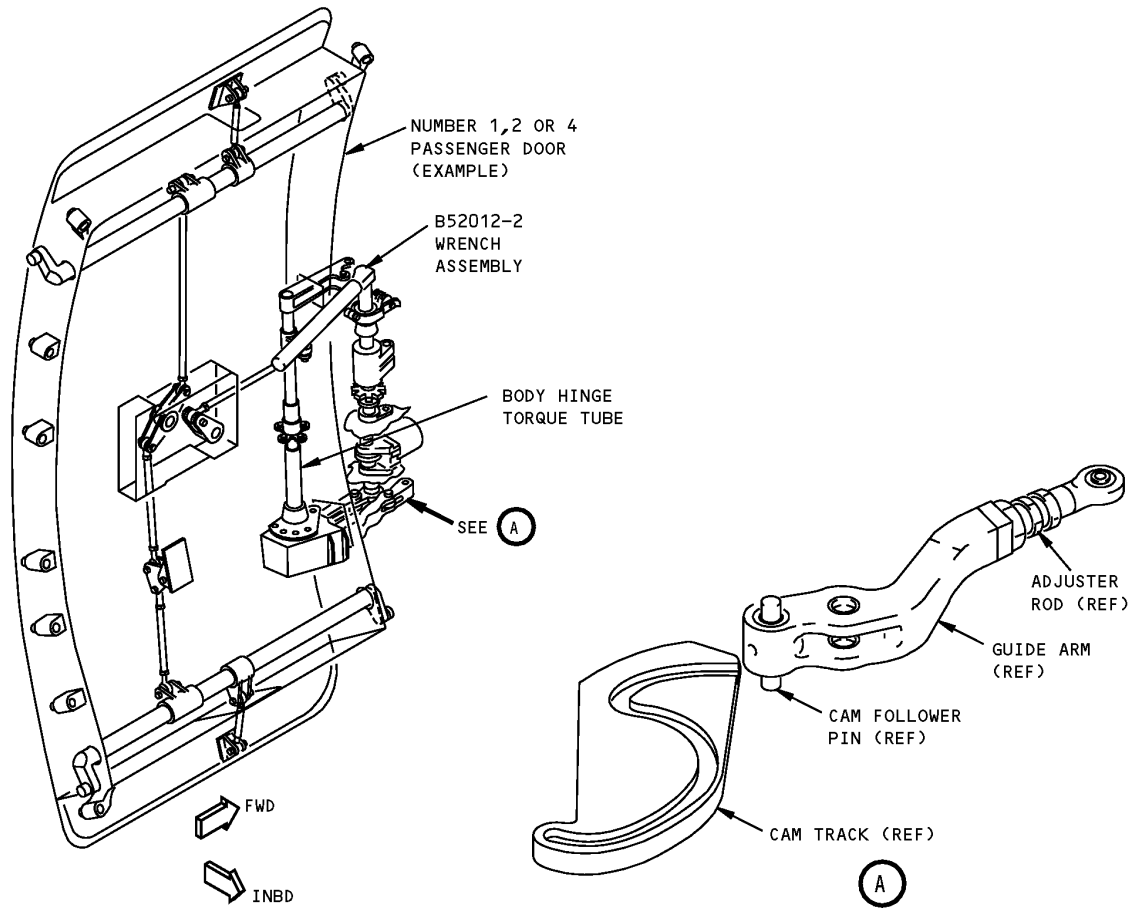
COMPONENT MAINTENANCE: NO

USAGE & DESCRIPTION: The B52012-1 wrench has a limited usage on 757 airplanes NA001-NA017, NA201-NA214, NA401-NA403 and airplanes without the incorporation of Service Bulletin SB 757-52-0005. B52012 is used to rotate the number 1, 2 or 4 passenger door's body torque tube to install the door's guide arm. Refer to the current B52012 drawing and AMM 52-11-00 for complete usage instructions. B52012-1 consists of a B52012-2 wrench assembly contained in a storage box.

WEIGHT: 10 lbs (4.5 kg)

DIMENSIONS: 2 x 3 x 28 inches (51 x 76 x 711 mm)

ILLUSTRATED TOOL AND EQUIPMENT MANUAL



**Passenger Door Guide Arm Installation/Removal Wrench
Figure 1**



757

ILLUSTRATED TOOL AND EQUIPMENT MANUAL

PART NUMBER: B52015-1 WAS MOVED TO 52-20-03



757

ILLUSTRATED TOOL AND EQUIPMENT MANUAL

PART NUMBER: B52017-1

NAME: COMPRESSOR - SPRING, PASSENGER DOOR COUNTERBALANCE

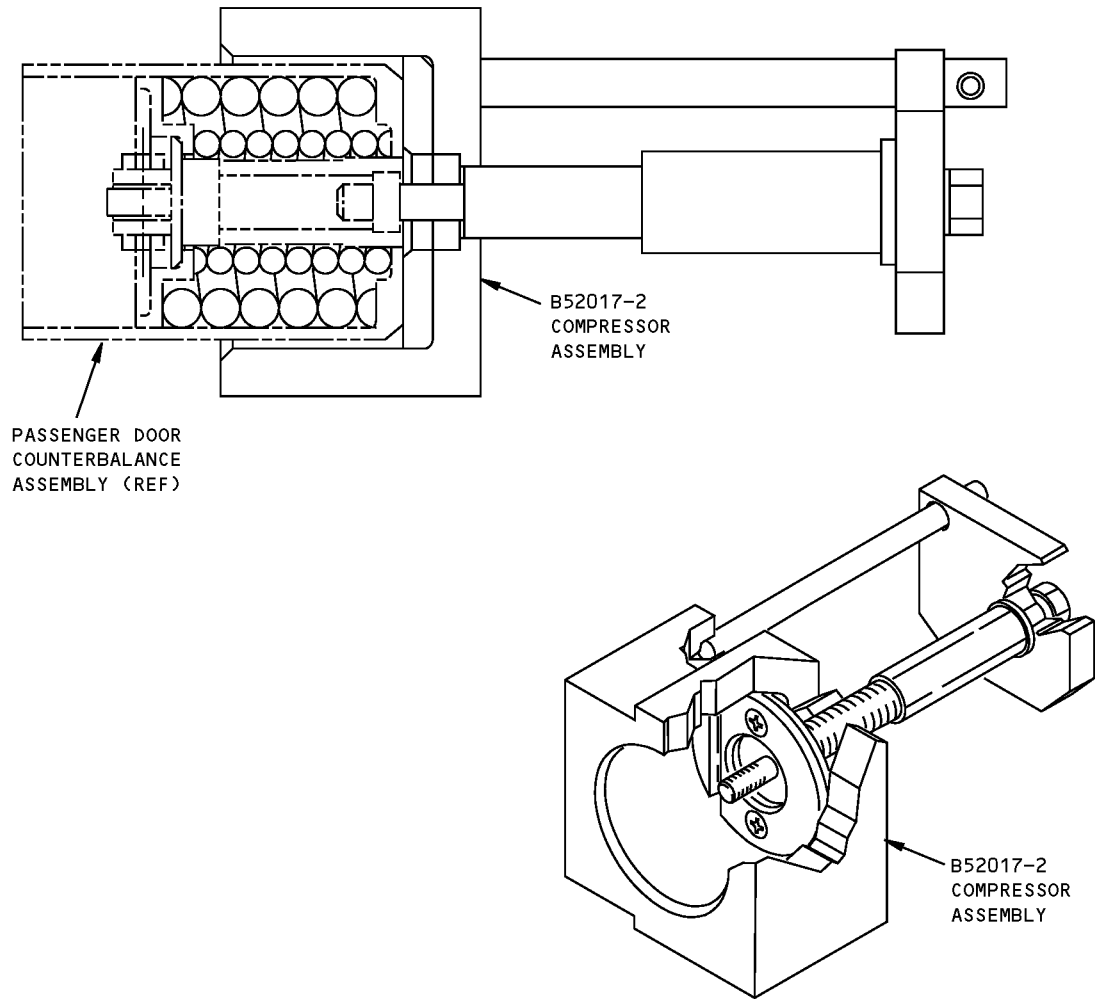
AIRPLANE MAINTENANCE: NO

COMPONENT MAINTENANCE: YES

USAGE & DESCRIPTION: The B52017-1 compressor is during component maintenance on 757-200, -200C and -300 airplanes except line numbers 2 through 30 and 32 through 34, unless Service Bulletin SB 52-0005 has been incorporated. B52017 is used to compress the passenger door counterbalance spring during assembly or disassembly of the passenger door counterbalance assembly. Refer to the current B52017 drawing and CMM 52-11-65 for complete usage instructions. B52017-1 consists of a B52017-2 compressor assembly contained in a storage box.

WEIGHT: 15 lbs (7 kg)

DIMENSIONS: 4 x 4 x 9 inches (102 x 102 x 229 mm)



Passenger Door Counterbalance Spring Compressor
Figure 1

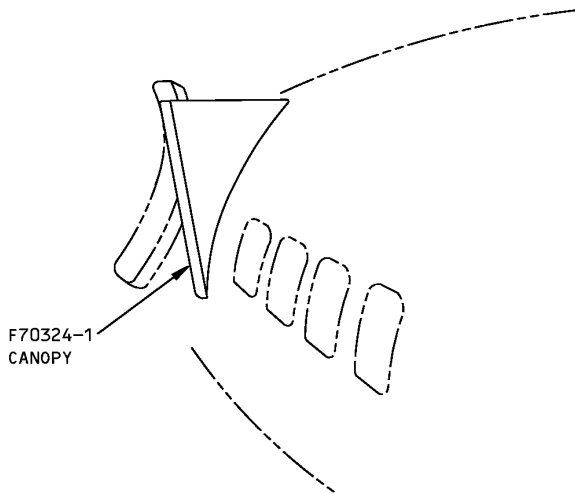
ILLUSTRATED TOOL AND EQUIPMENT MANUAL

PART NUMBER: F70324-1**NAME:** CANOPY - FORWARD ENTRY DOOR**AIRPLANE MAINTENANCE:** YES**COMPONENT MAINTENANCE:** NO

USAGE & DESCRIPTION: The F70324-1 canopy is used for No. 1 right and No. 4 left or right passenger doors. F70324 is used to protect passengers or maintenance personnel and the airplane interior from inclement weather conditions. When a passenger door is opened, an aluminum frame attaches to door latch fittings on each side of the door and to the airplane skin at top center. Pivot points are provided on fixed tubular frame to allow extension and retraction of canopy. The F70324 canopy is ramp equipment. Refer to the current F70324 drawing for complete usage instructions. F70324 consists of two aluminum tubular "U" frames covered with a nylon impregnated fabric.

DIMENSIONS: 32 x 34 x 54 inches (813 x 813 x 1372 mm)

NOTE: F70324-1 replaces 2ME50-7945 for future procurement.



**Forward Entry Door Canopy
Figure 1**



757

ILLUSTRATED TOOL AND EQUIPMENT MANUAL

PART NUMBER: B52019-14

NAME: SAFETY BARRIER - CREW ENTRY DOOR

AIRPLANE MAINTENANCE: YES

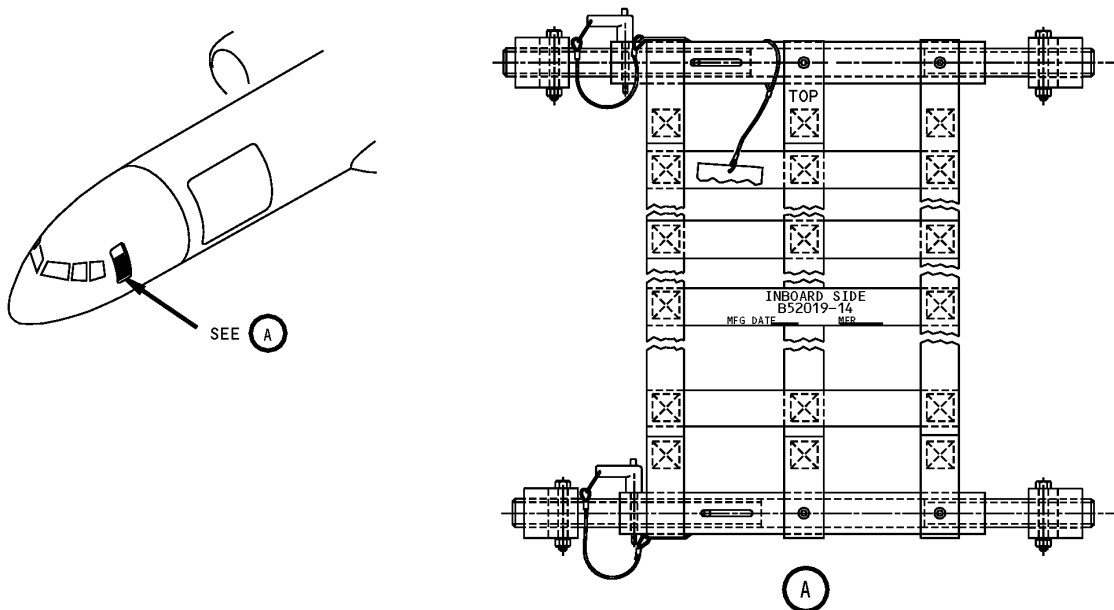
COMPONENT MAINTENANCE: NO

USAGE & DESCRIPTION: The B52019-14 safety barrier is used on 757 package freighter airplanes only. B52019 is used to provide a safety barrier for the crew entry door while the airplane is parked with door open or removed. Refer to AMM 52-12-01 for complete usage instructions. B52019 consists of a bolted and pinned steel frame with web straps covering the door opening.

WEIGHT: 44 lbs (20 kg)

DIMENSIONS: 8 x 8 x 28 inches (203 x 203 x 711 mm)

NOTE: B52019-14 supersedes B52019-1.



**B52019-14 safety barrier
Figure 1**

ILLUSTRATED TOOL AND EQUIPMENT MANUAL

PART NUMBER: B52018-1

NAME: SLING - CREW ENTRY DOOR

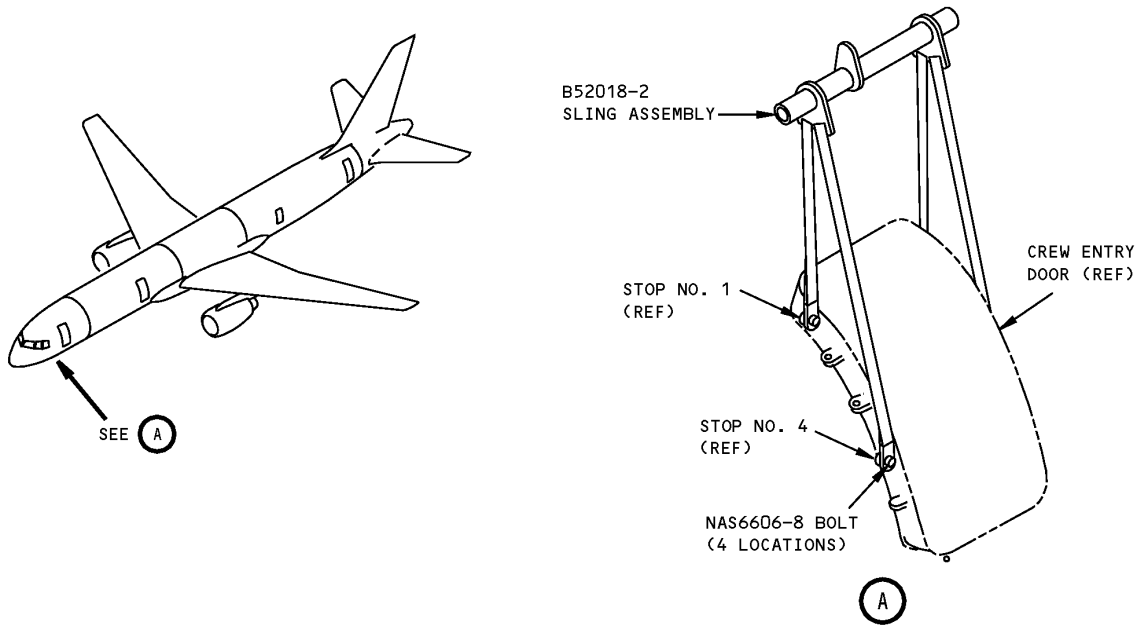
AIRPLANE MAINTENANCE: YES

COMPONENT MAINTENANCE: NO

USAGE & DESCRIPTION: The B52018-1 sling is used on the 757 package freighter only. B52018 is used to remove and install crew entry door. B52018 is used with a customer-furnished overhead lift. Refer to AMM 52-12-01 for complete usage instructions. B52018-1 consists of B52018-2 sling assembly contained in a storage box.

WEIGHT: 6 lbs (2.7 kg)

DIMENSIONS: 10 x 15 x 25 inches (254 x 381 x 635 mm)



**Crew Entry Door Sling
Figure 1**



757

ILLUSTRATED TOOL AND EQUIPMENT MANUAL

PART NUMBER: B52021-1

NAME: WRENCH - THRUST COLLAR

AIRPLANE MAINTENANCE: YES

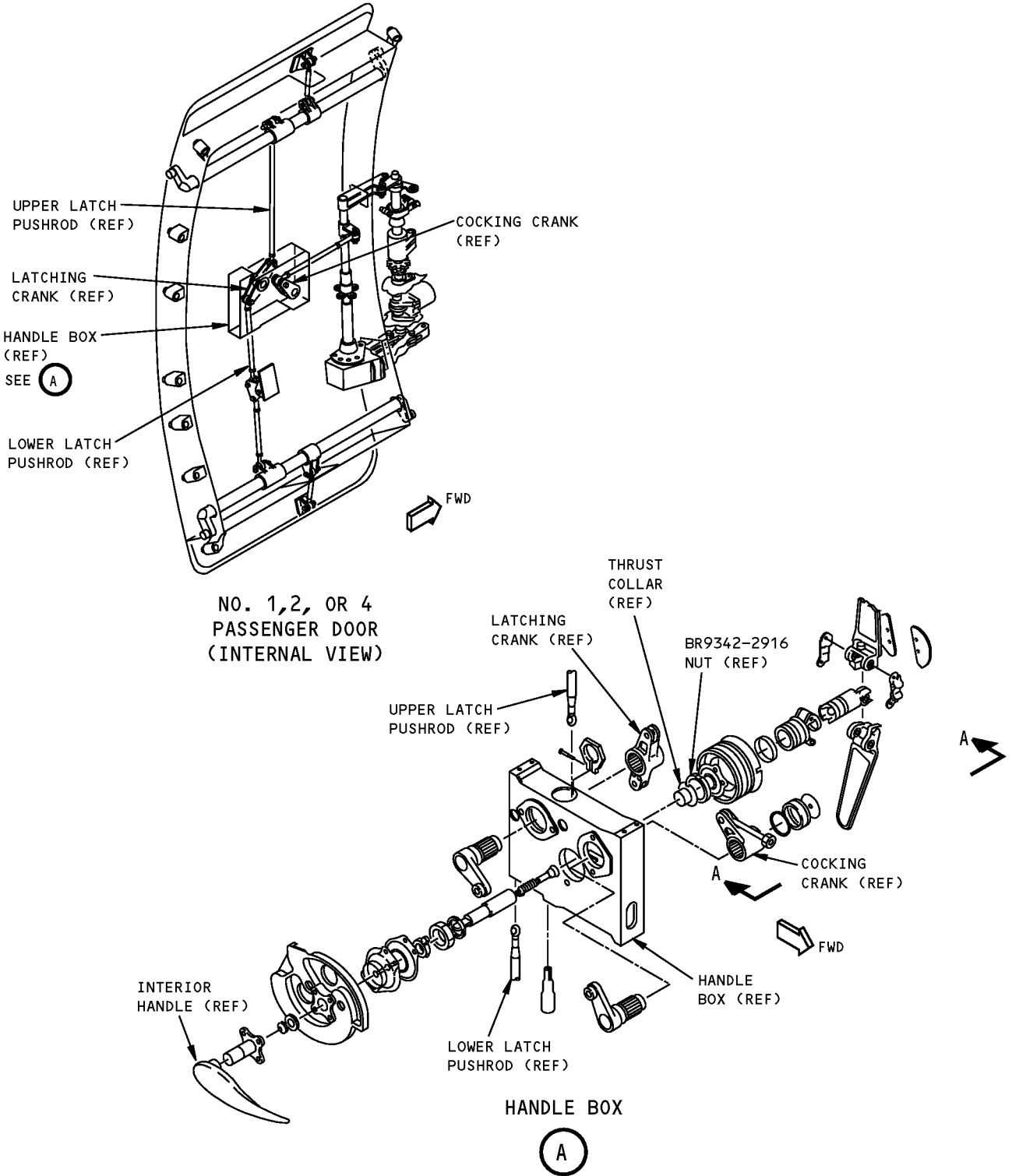
COMPONENT MAINTENANCE: YES

USAGE & DESCRIPTION: The B52021-1 wrench is used on 757-200, -200C and -300 airplanes. B52021 is used to torque the BR9342-2916 nut located in the recess of the cam plate for handle box assembly on the number 1, 2 and 4 (left and right hand) passenger doors. Refer to AMM 52-11-13, CMM 52-11-05, CMM 52-11-07, CMM 52-11-15 and CMM 52-11-25 for complete usage instructions. B52021-1 consists of a B52021-2 wrench assembly contained in a storage box.

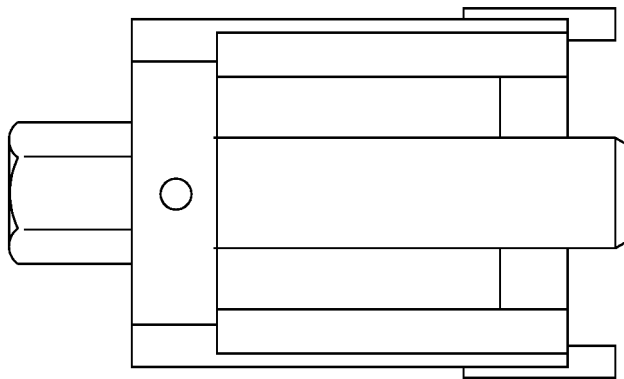
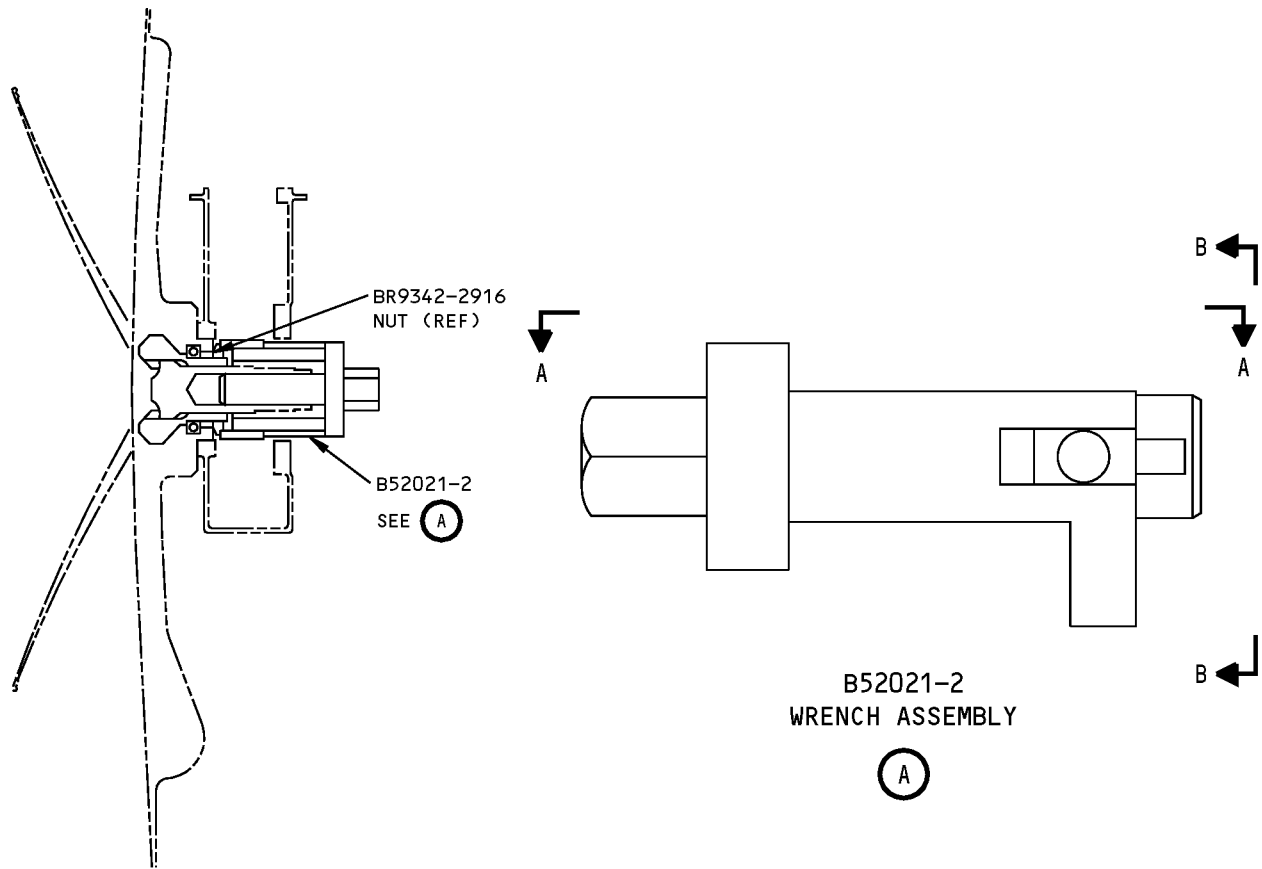
WEIGHT: 2 lbs (0.9 kg)

DIMENSIONS: 2 x 3 x 5 inches (51 x 76 x 127 mm)

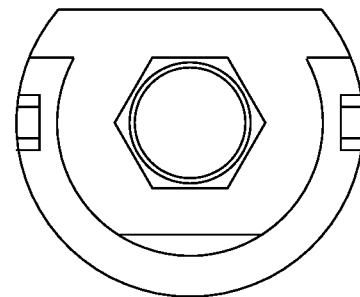
ILLUSTRATED TOOL AND EQUIPMENT MANUAL



**Thrust Collar Wrench
Figure 1 (Sheet 1 of 2)**



A-A



B-B

**Thrust Collar Wrench
Figure 1 (Sheet 2 of 2)**



757

ILLUSTRATED TOOL AND EQUIPMENT MANUAL

PART NUMBER: B52023-1, -5

NAME: SPANNER WRENCH, HINGE NUT, NUMBER 1, 2 AND 4 DOORS

AIRPLANE MAINTENANCE: YES

COMPONENT MAINTENANCE: NO

USAGE & DESCRIPTION: The B52023-1 and -5 spanner wrench are used on 757-200, -200C and -300 airplanes. B52023 is used to torque the hinge arm nuts on passenger doors. Refer to AMM 52-11-00 and 52-11-09 for complete usage instructions.

B52023 consists of:

B52023-1		
QUANTITY	NOMENCLATURE	PART NUMBER
1	SPANNER WRENCH	B52023-2
1	STORAGE BOX ASSEMBLY	B52023-3

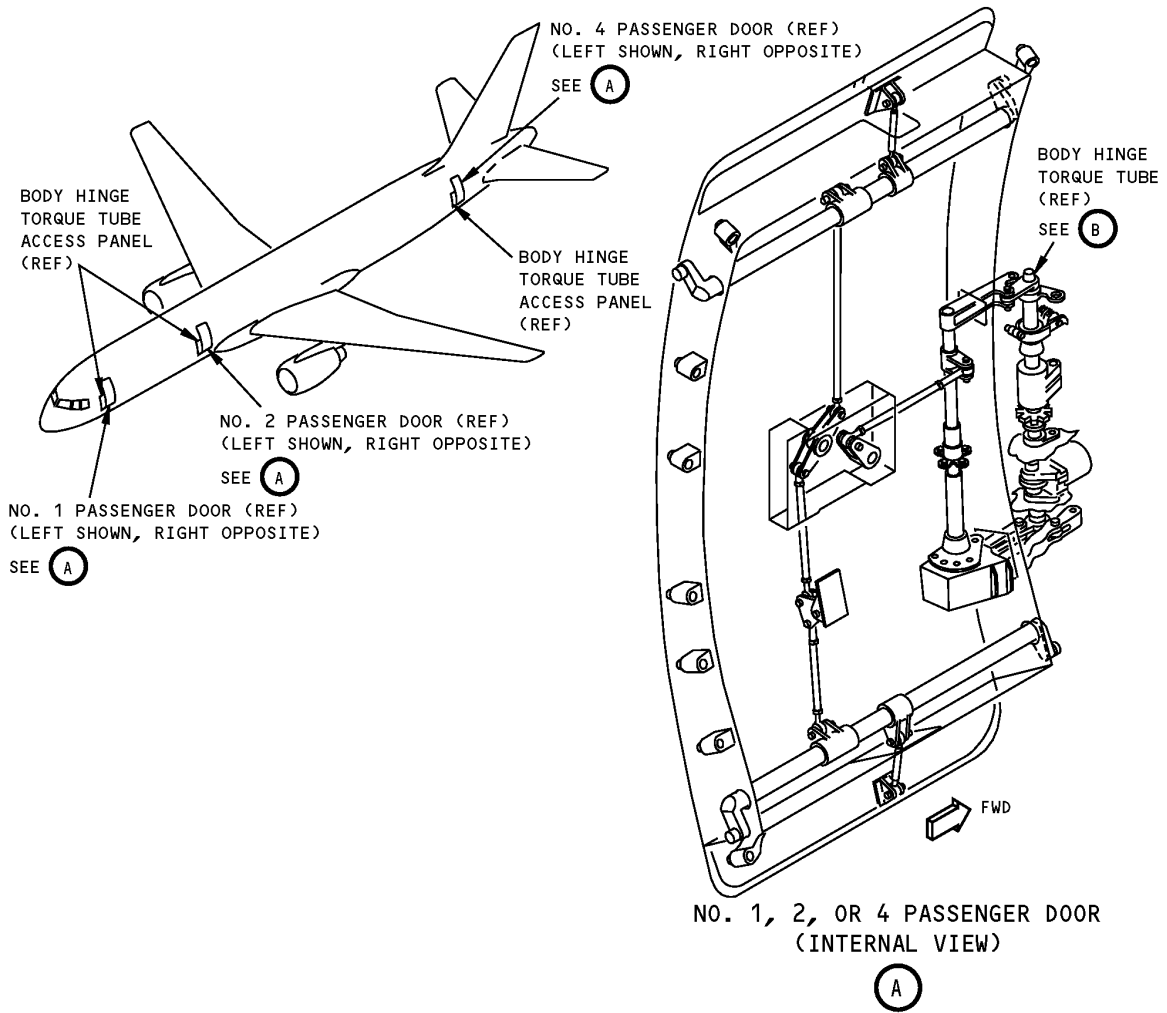
B52023-5		
QUANTITY	NOMENCLATURE	PART NUMBER
1	SPANNER WRENCH	B52023-2
1	SPANNER WRENCH	B52023-6
1	STORAGE BOX ASSEMBLY	B52023-7

WEIGHT: 1 lb (0.45 kg)

DIMENSIONS: 2 x 3 x 12 inches (51 x 76 x 305 mm)

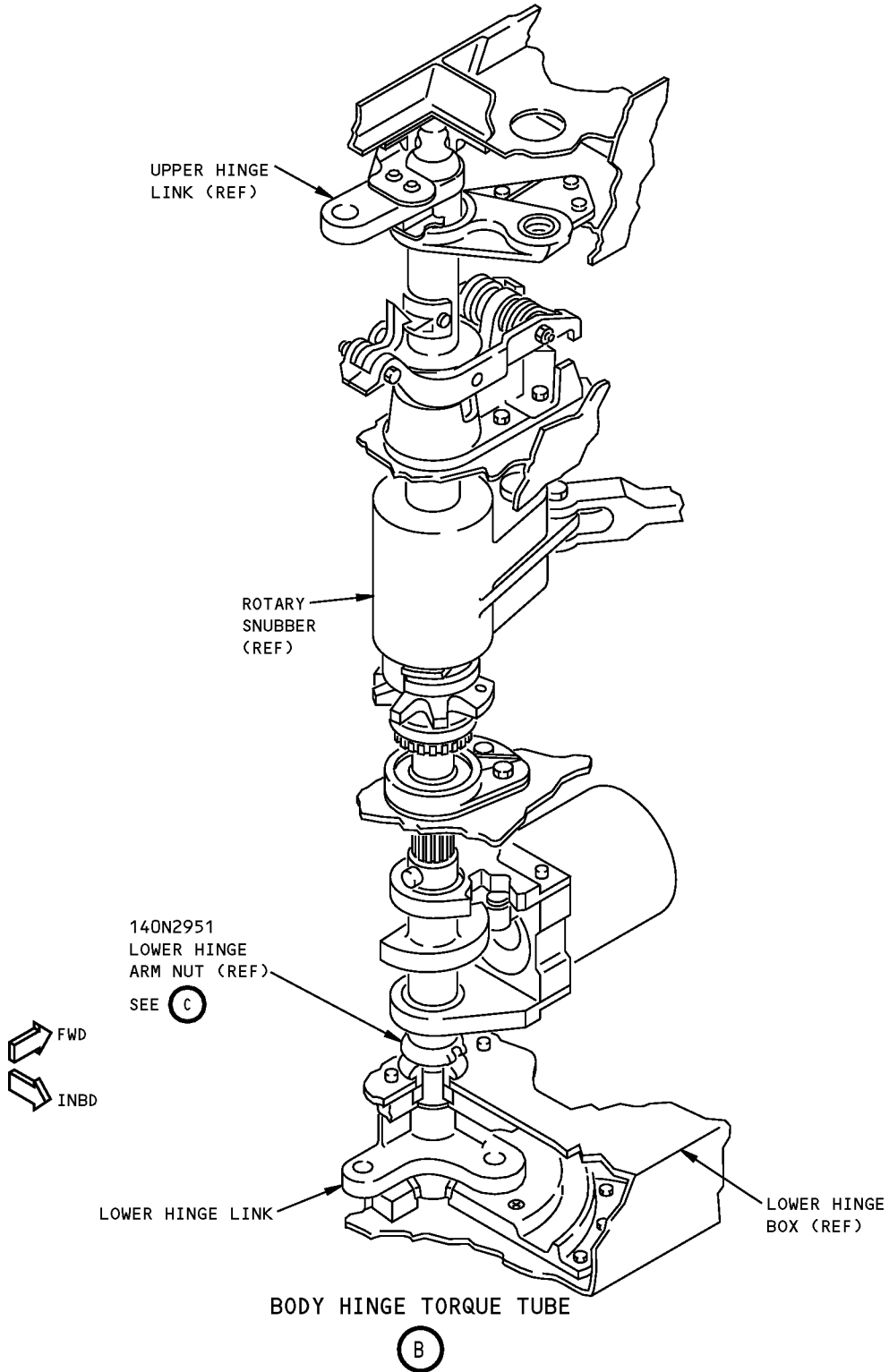
NOTE: B52023-5 replaces B52023-1 for future procurement.

ILLUSTRATED TOOL AND EQUIPMENT MANUAL

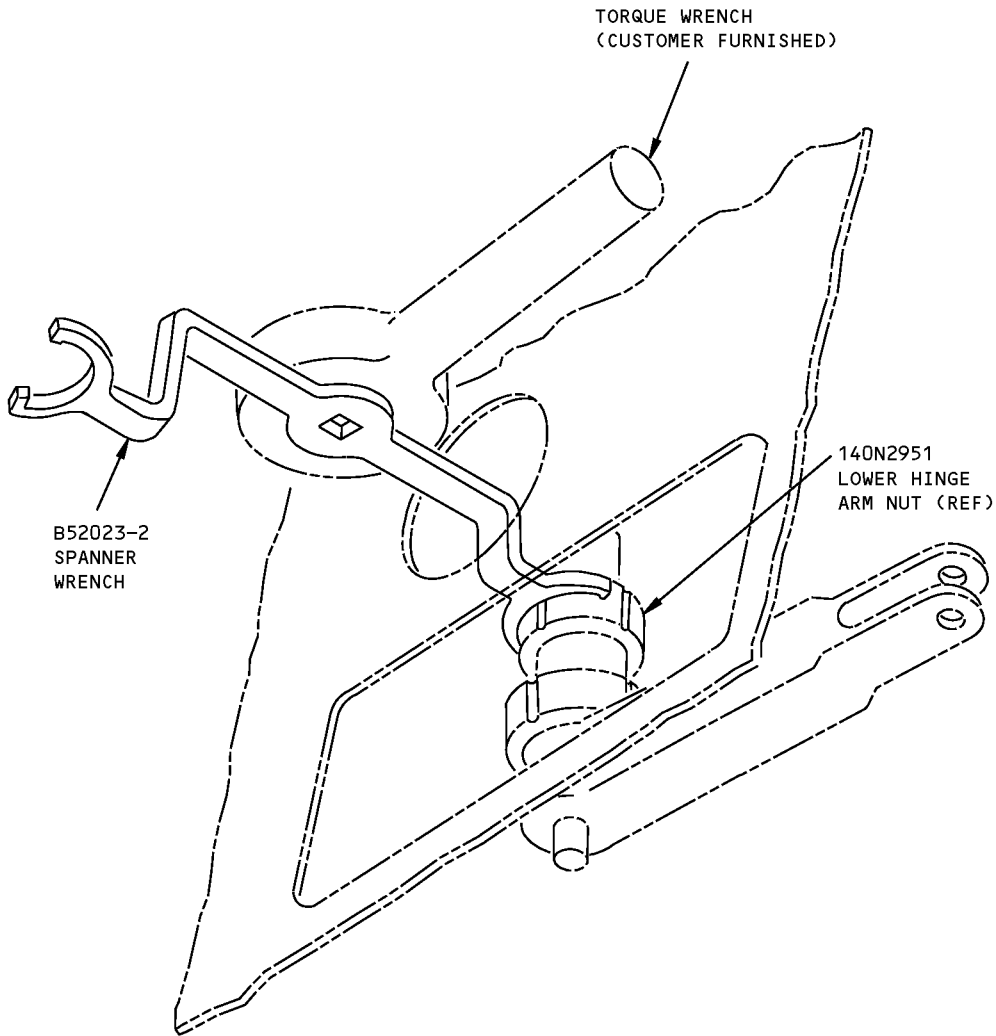


**Number 1, 2 and 4 Doors Hinge Nut Spanner Wrench
Figure 1 (Sheet 1 of 3)**

ILLUSTRATED TOOL AND EQUIPMENT MANUAL



**Number 1, 2 and 4 Doors Hinge Nut Spanner Wrench
Figure 1 (Sheet 2 of 3)**



**Number 1, 2 and 4 Doors Hinge Nut Spanner Wrench
Figure 1 (Sheet 3 of 3)**



757

ILLUSTRATED TOOL AND EQUIPMENT MANUAL

PART NUMBER: F70336-1

NAME: SPANNER WRENCH - ASSIST HANDLE, MAIN ENTRY DOOR

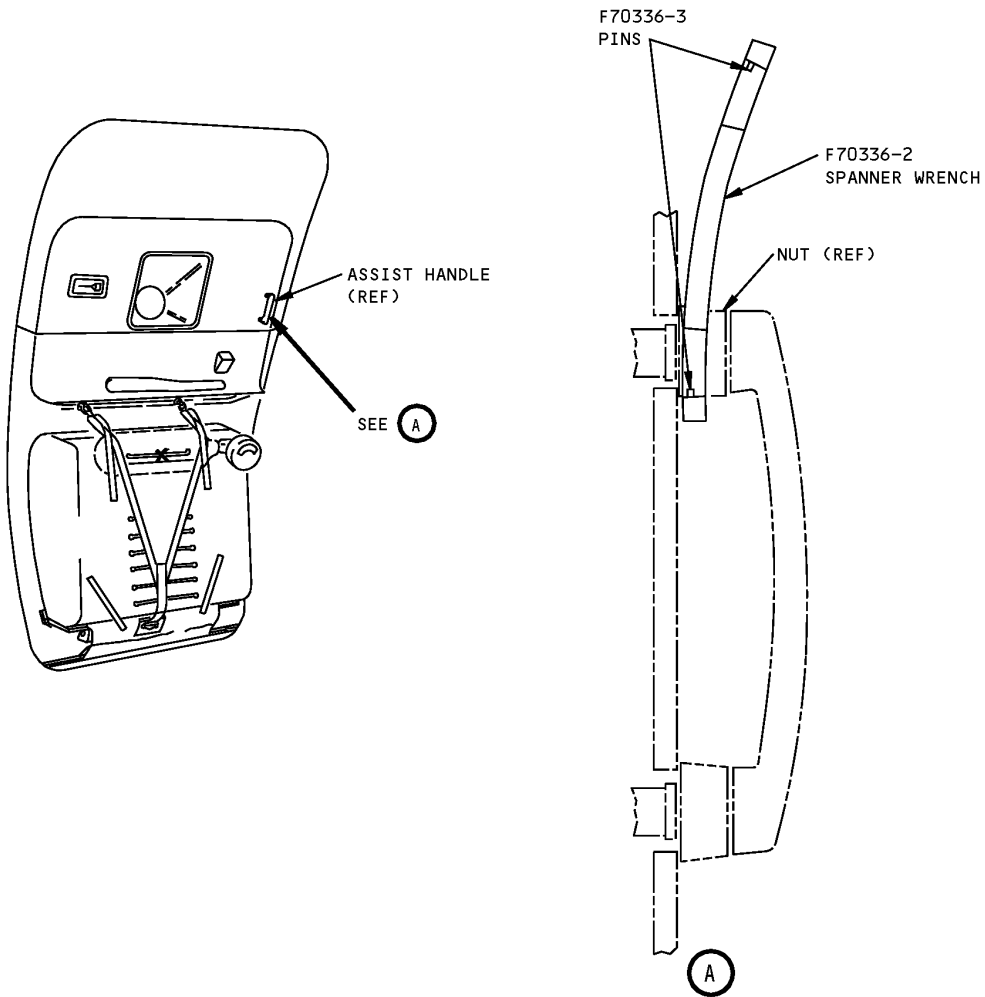
AIRPLANE MAINTENANCE: YES

COMPONENT MAINTENANCE: NO

USAGE & DESCRIPTION: The F70336-1 spanner wrench is used on all 757 airplanes. F70336 is used to tighten or remove the nuts holding the assist handle on the main entry door. Refer to AMM 52-11-02 for complete usage instructions. F70336-1 consists of a F70336-2 handle and two F70336-3 pins.

WEIGHT: 1 lb (0.45 kg)

DIMENSIONS: 1 x 1 x 6 inches (25 x 25 x 152 mm)



**Main Entry Door Assist Handle Spanner Wrench
Figure 1**



757

ILLUSTRATED TOOL AND EQUIPMENT MANUAL

PART NUMBER: B52027-1

NAME: RIGGING SIMULATOR - ESCAPE SLIDE, PASSENGER DOOR

AIRPLANE MAINTENANCE: YES

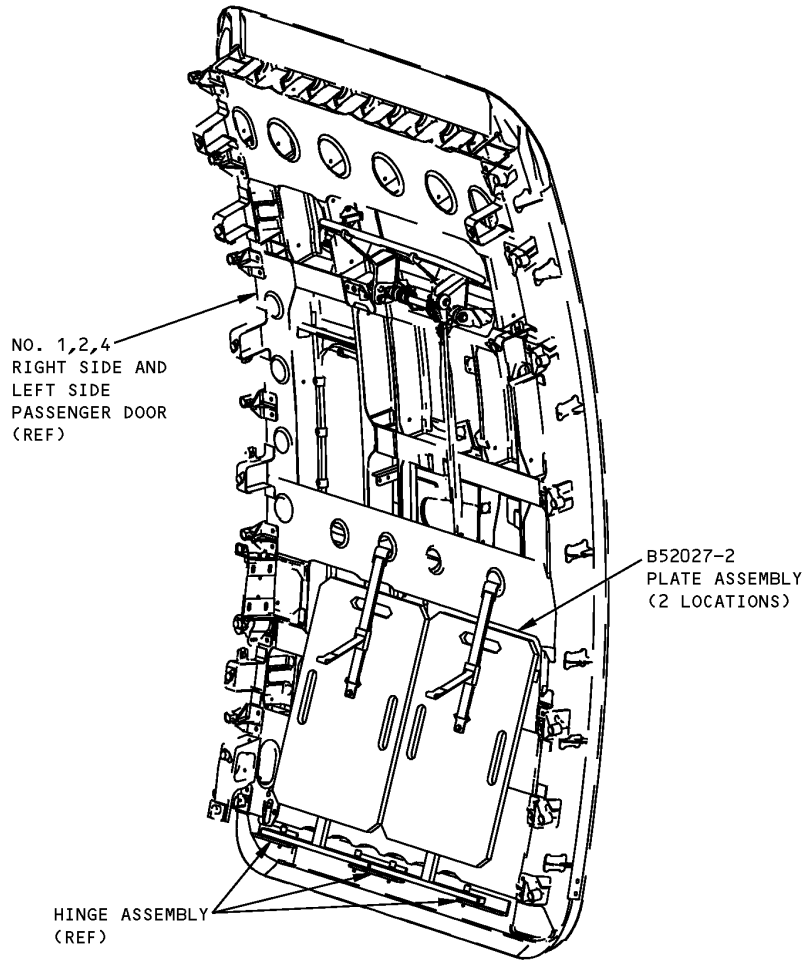
COMPONENT MAINTENANCE: NO

USAGE & DESCRIPTION: The B52027-1 rigging simulator is used on all 757 airplanes. B52027 is used to simulate the weight of the escape slide on the passenger door during door rigging. Refer to AMM 52-11-00 for complete usage instructions. B52027-1 consists of two B52027-2 plate assemblies contained in a storage box.

WEIGHT: 100 lbs (45 kg)

DIMENSIONS: 2 x 14 x 24 inches (51 x 356 x 610 mm)

ILLUSTRATED TOOL AND EQUIPMENT MANUAL



**Passenger Door Escape Slide Rigging Simulator
Figure 1**



757

ILLUSTRATED TOOL AND EQUIPMENT MANUAL

PART NUMBER: B52028-1

NAME: CANOPY EQUIPMENT - NUMBER 2 LEFT HAND PASSENGER ENTRY DOOR

AIRPLANE MAINTENANCE: YES

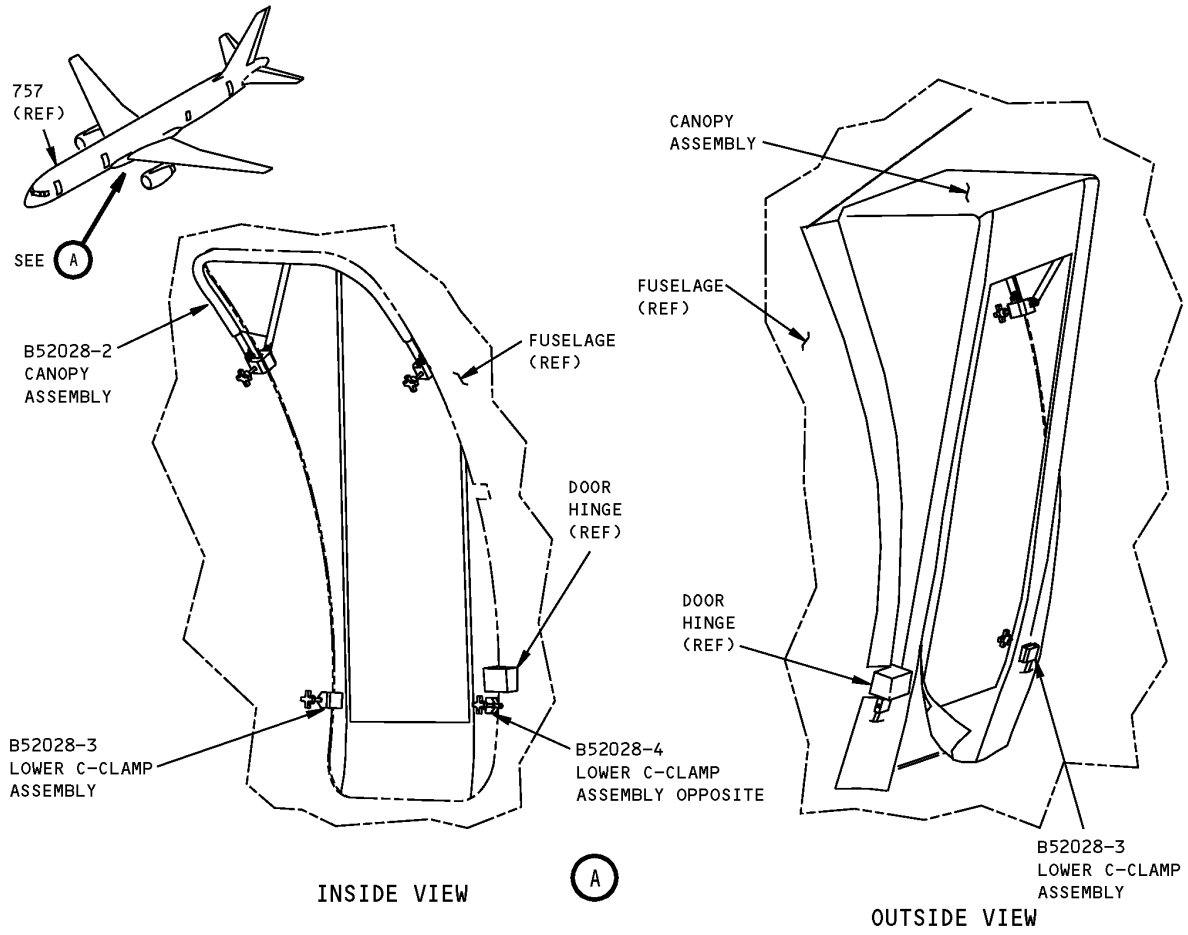
COMPONENT MAINTENANCE: NO

USAGE & DESCRIPTION: The B52028-1 canopy equipment is used on all 757 airplanes except freighters. B52028 is used during airplane maintenance, when door is to be left open for extended periods of time. B52028 will shield the interior from weather and still provide an easy access to the inside of the passenger cabin. The B52028 is ramp equipment, refer to the current B52028 drawing for complete usage instructions. B52028-1 consists of a B52028-2 canopy assembly, a B52028-3 lower "C" clamp assembly and a B52028-4 lower "C" clamp assembly, all contained in a storage bag assembly.

WEIGHT: 20 lbs (9 kg)

DIMENSIONS: 6 x 24 x 36 inches (152 x 610 x 914 mm)

757
ILLUSTRATED TOOL AND EQUIPMENT MANUAL



Number 2 Left Hand Passenger Entry Door Canopy Equipment
Figure 1



757

ILLUSTRATED TOOL AND EQUIPMENT MANUAL

PART NUMBER: C52008-1

NAME: TORQUE WRENCH ASSEMBLY - GALLEY AND ENTRY DOOR

AIRPLANE MAINTENANCE: YES

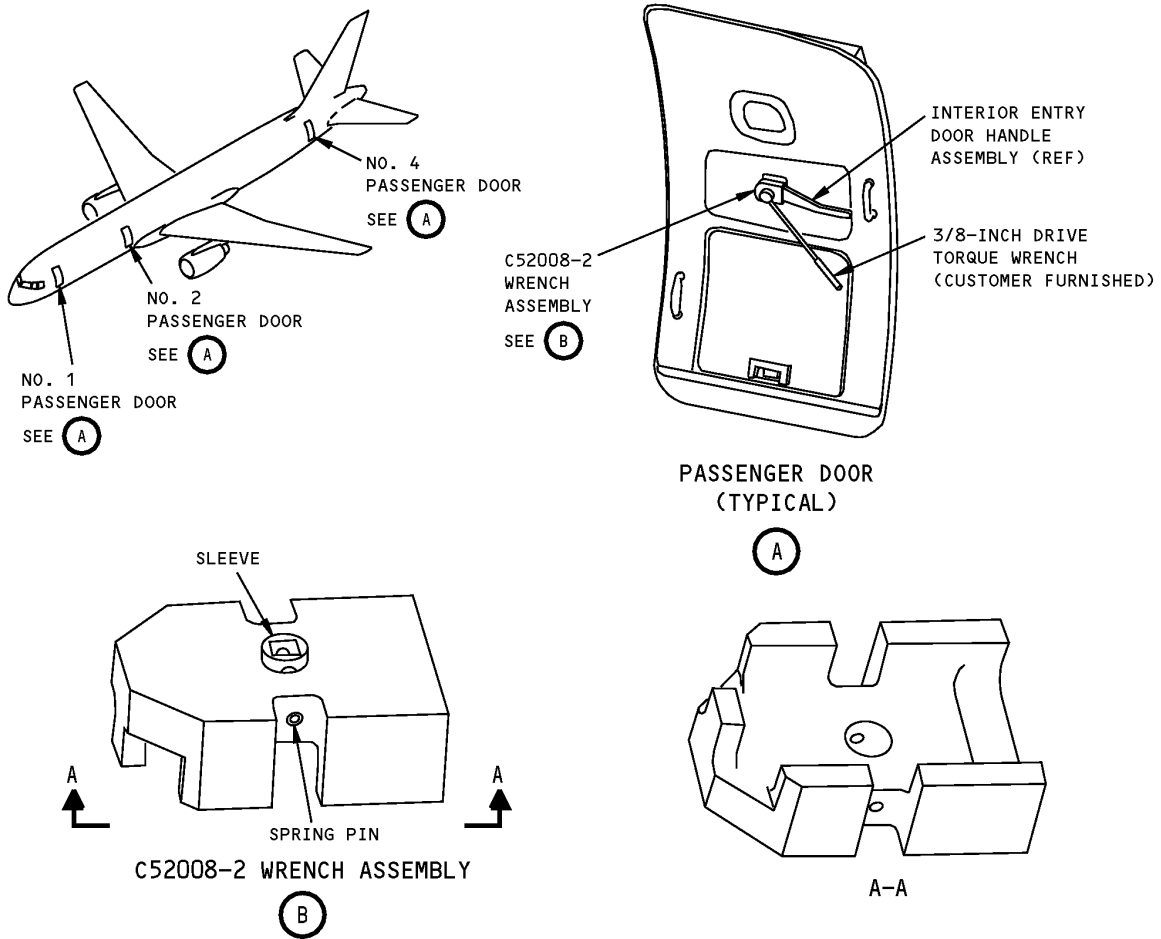
COMPONENT MAINTENANCE: NO

USAGE & DESCRIPTION: The C52008-1 torque wrench assembly is used on 757-200, -200C and -300 airplanes with the 411N2057 interior entry door handle installed. C52008 is used in conjunction with a customer-furnished torque wrench to perform a torque test on the number 1, 2 and 4 passenger doors. Refer to AMM 52-11-00 for complete usage instructions. The C52008-1 tester consists of a C52008-2 wrench assembly contained in a storage box.

WEIGHT: 1 lb (0.45 kg)

DIMENSIONS: 2 x 4 x 5 inches (51 x 102 x 127 mm)

ILLUSTRATED TOOL AND EQUIPMENT MANUAL

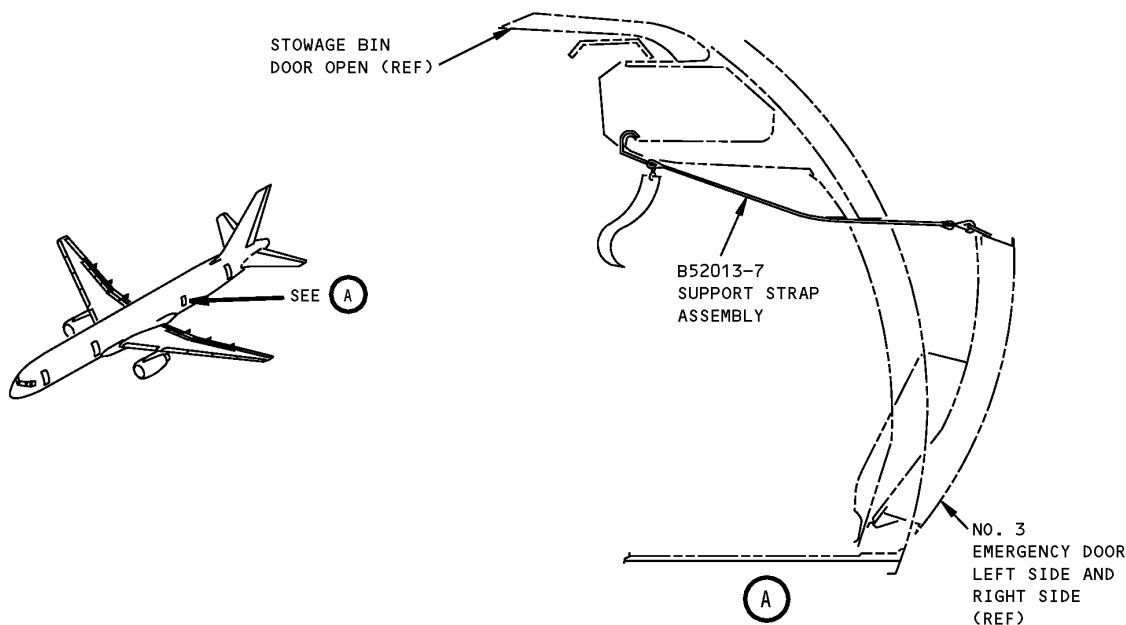


**Galley And Entry Door Torque Wrench Assembly
Figure 1**

ILLUSTRATED TOOL AND EQUIPMENT MANUAL

PART NUMBER: B52013-6**NAME:** SUPPORT ASSEMBLY - NUMBER 3 EMERGENCY DOOR**AIRPLANE MAINTENANCE:** YES**COMPONENT MAINTENANCE:** NO

USAGE & DESCRIPTION: The B52013-6 support assembly is used on 757-200 and -300 airplanes. B52013 is used to hold the number 3 emergency door in a partially open position for cabin ventilation during ground maintenance. Refer to AMM 52-21-01 for complete usage instructions. B52013-6 consists of two B52013-7 support strap assemblies contained in a storage box.

WEIGHT: 5 lbs (2.3 kg)**DIMENSIONS:** 6 x 8 x 16 inches (152 x 203 x 406 mm)**NOTE:** B52013-6 supersedes B52013-1.

**Number 3 Emergency Door Support Assembly
Figure 1**



757

ILLUSTRATED TOOL AND EQUIPMENT MANUAL

PART NUMBER: B52022-21

NAME: MEASUREMENT TOOL - EMERGENCY POWER RESERVOIR, CABLE TRAVEL

AIRPLANE MAINTENANCE: YES

COMPONENT MAINTENANCE: NO

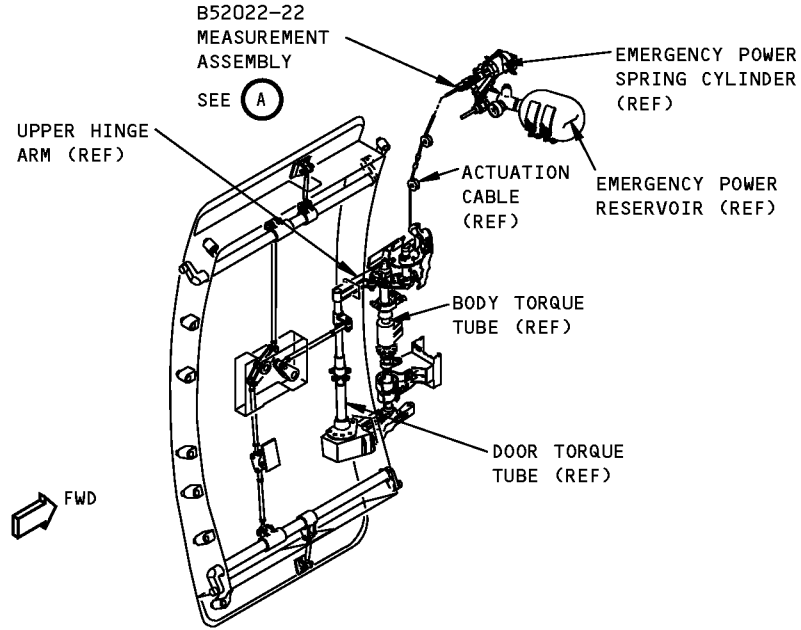
USAGE & DESCRIPTION: The B52022-21 measurement tool is used on 757-200 and -300 airplanes. The passenger doors on the 757 airplane incorporate an emergency mechanism to power the passenger doors to the open position. A drive chain engaged with a sprocket, powers the door emergency power opening system. A pneumatic actuator drives it. The pneumatic pressure comes from a pneumatic reservoir. Reservoir pressure is released when a diaphragm on the reservoir is ruptured. A cable trigger mechanism actuates a knife to rupture the diaphragm. The B52022 simulates the cable force required to break the reservoir diaphragm and allow accurate measurement of the cable travel. The B52022 is mounted in place of a passenger entry door emergency reservoir. Refer to AMM 52-11-32 for complete usage instructions. The B52022-21 consists of a B52022-22 measurement assembly contained in a storage box.

WEIGHT: 3 lbs (1.4 kg)

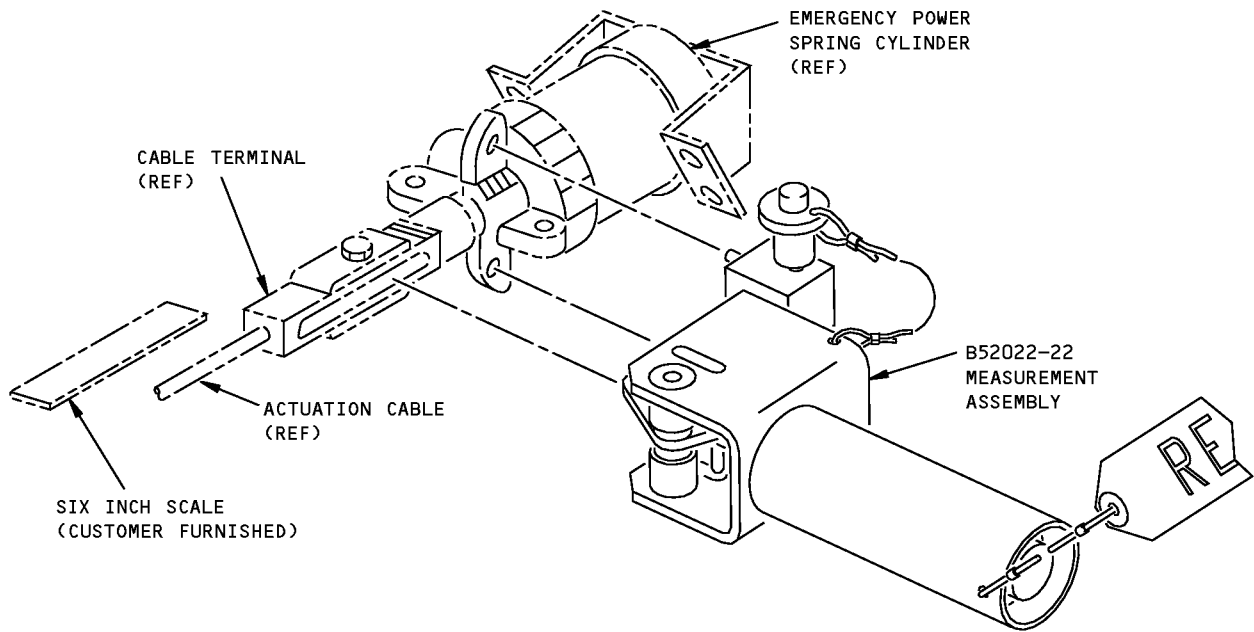
DIMENSIONS: 4 x 5 x 6 inches (102 x 127 x 152 mm)

NOTE: B52022-21 supersedes B52022-18.

ILLUSTRATED TOOL AND EQUIPMENT MANUAL



**NO. 1, 2, OR 4 PASSENGER DOOR
(INTERNAL VIEW)**



**B52022-22
MEASUREMENT ASSEMBLY**

(A)

L91260 S0000213481_V2

**Cable Travel Emergency Power Reservoir Measurement Tool
Figure 1**



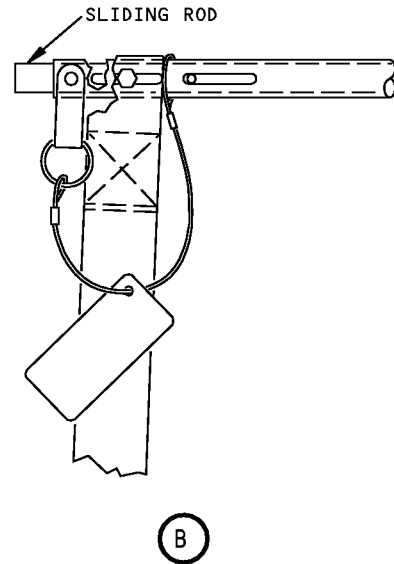
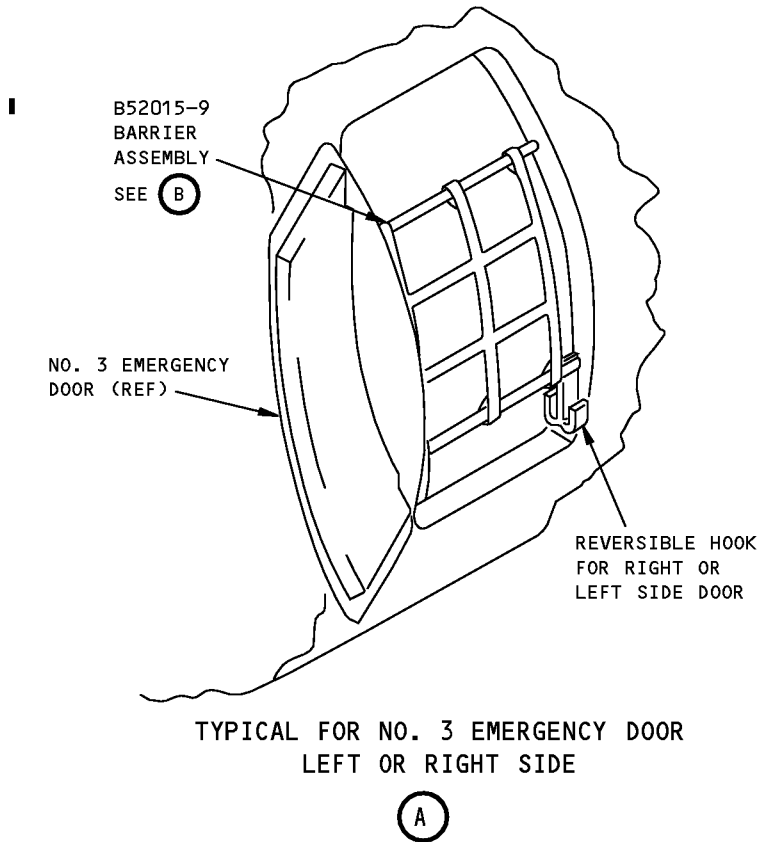
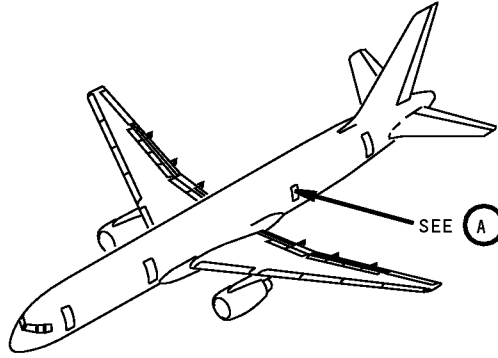
757

ILLUSTRATED TOOL AND EQUIPMENT MANUAL

PART NUMBER: B52015-9

NAME:	SAFETY BARRIER - NUMBER 3 EMERGENCY EXIT DOOR
AIRPLANE MAINTENANCE:	YES
COMPONENT MAINTENANCE:	NO
USAGE & DESCRIPTION:	The B52015-9 safety barrier is used on all 757 airplanes, except the 757-200 package freighters. B52015 is used to prevent injury to personnel during maintenance when the left or right No. 3 emergency exit door is open or removed. Refer to AMM 52-21-01 and the current B52015 drawing for complete usage instructions. B52015 consists of a welded aluminum frame with fittings that hold web straps, which cover the door opening.
WEIGHT:	10 lbs (4.5 kg)
DIMENSIONS:	6 x 12 x 30 inches (152 x 305 x 762 mm)
<u>NOTE:</u>	B52015-9 supersedes B52015-1

757
ILLUSTRATED TOOL AND EQUIPMENT MANUAL



L91249 S0000213368_V2

Number 3 Emergency Exit Door Safety Barrier
Figure 1



757

ILLUSTRATED TOOL AND EQUIPMENT MANUAL

PART NUMBER: A52010-49, -51

NAME: CLAMP EQUIPMENT - SPRING INSTALLATION/REMOVAL, BULK CARGO DOOR

AIRPLANE MAINTENANCE: YES

COMPONENT MAINTENANCE: YES

USAGE & DESCRIPTION: The A52010-49 or -51 clamp equipment is used on all 757 airplanes that include a number 3 cargo door. A52010-49 is used on 757 airplanes that include a number 3 cargo door with 146N6826 or 146N6820 counterbalance installations (757 only fleet). A52010-51 includes all A52010-49 components and applications and adds an A52010-31 clamp assembly for use on 767 airplanes that include a number 3 cargo door with 146T63870 balance system (757/767 mixed fleet).

A52010 is used to remove or install bulk cargo door springs in the spring tube assembly, located in the counterbalance assembly. Refer to AMM 52-36-15 and CMM 52-36-04 for complete usage instructions. A52010-49 and -51 consist of:

A52010-49		
QUANTITY	NOMENCLATURE	PART NUMBER
1	CLAMP ASSEMBLY	A52010-26
1	CLAMP ASSEMBLY	A52010-52
1	STORAGE BOX	

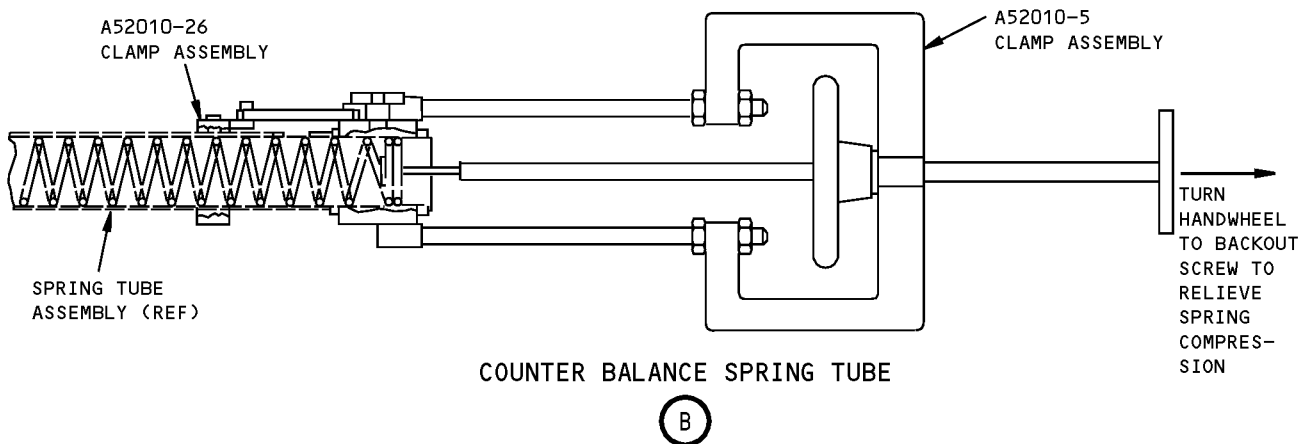
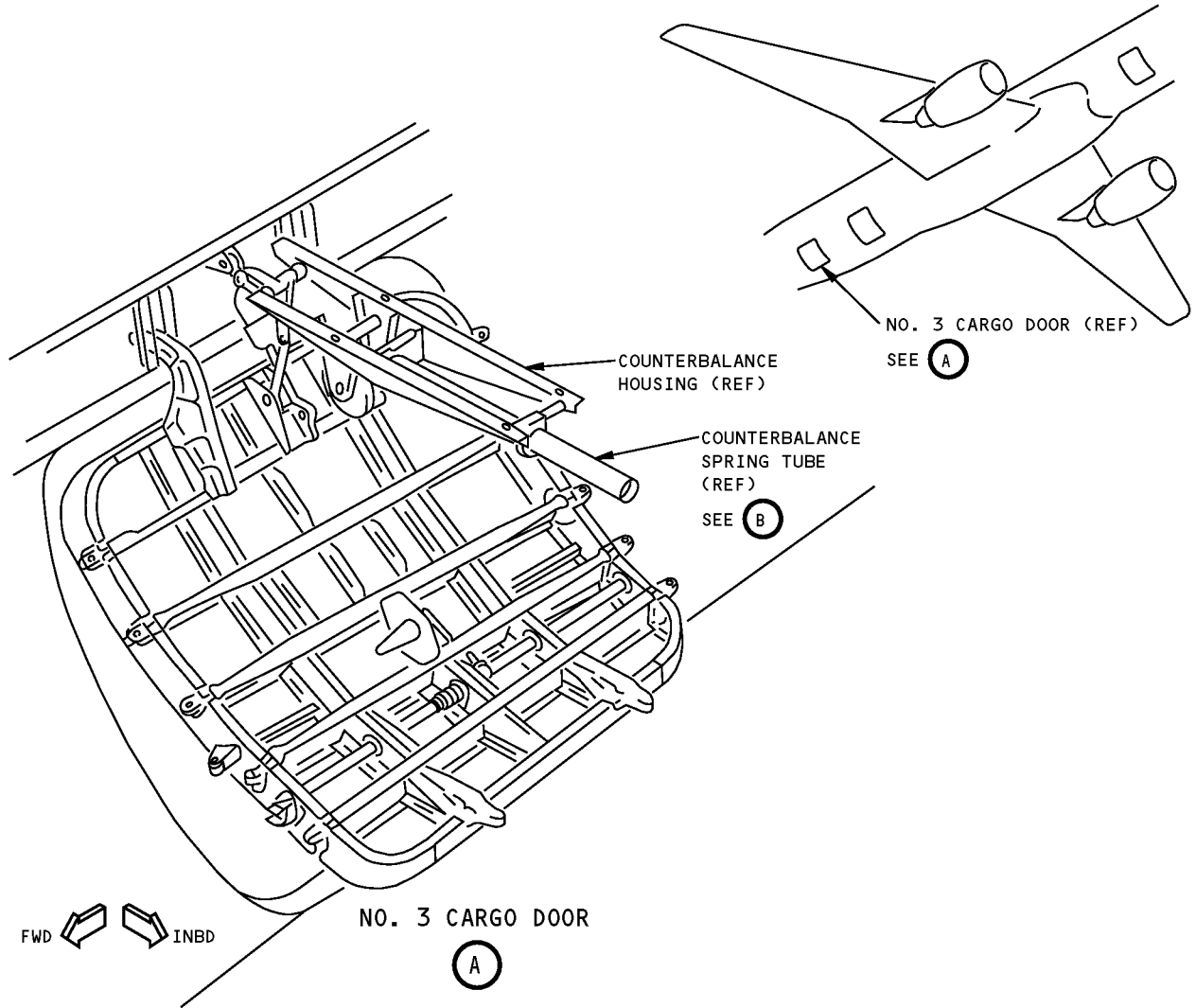
A52010-51		
QUANTITY	NOMENCLATURE	PART NUMBER
1	CLAMP ASSEMBLY	A52010-26
1	CLAMP ASSEMBLY	A52010-31
1	CLAMP ASSEMBLY	A52010-52
1	STORAGE BOX	

WEIGHT: A52010-49 - 15 lbs (7 kg)
A52010-51 - 16 lbs (7 kg)

DIMENSIONS: A52010-49 - 7 x 10 x 41 inches (178 x 354 x 1041 mm)
A52010-51 - 7 x 10 x 45 inches (178 x 354 x 1143 mm)

NOTE: A52010-49 and -51 supersedes A52010-13 and -15, respectively.

**757
ILLUSTRATED TOOL AND EQUIPMENT MANUAL**



**Bulk Cargo Door Spring Installation/Removal Clamp Equipment
Figure 1**

757
ILLUSTRATED TOOL AND EQUIPMENT MANUAL

PART NUMBER: B52005-19

NAME: SAFETY BARRIER - CARGO DOOR, FORWARD OR AFT

AIRPLANE MAINTENANCE: YES

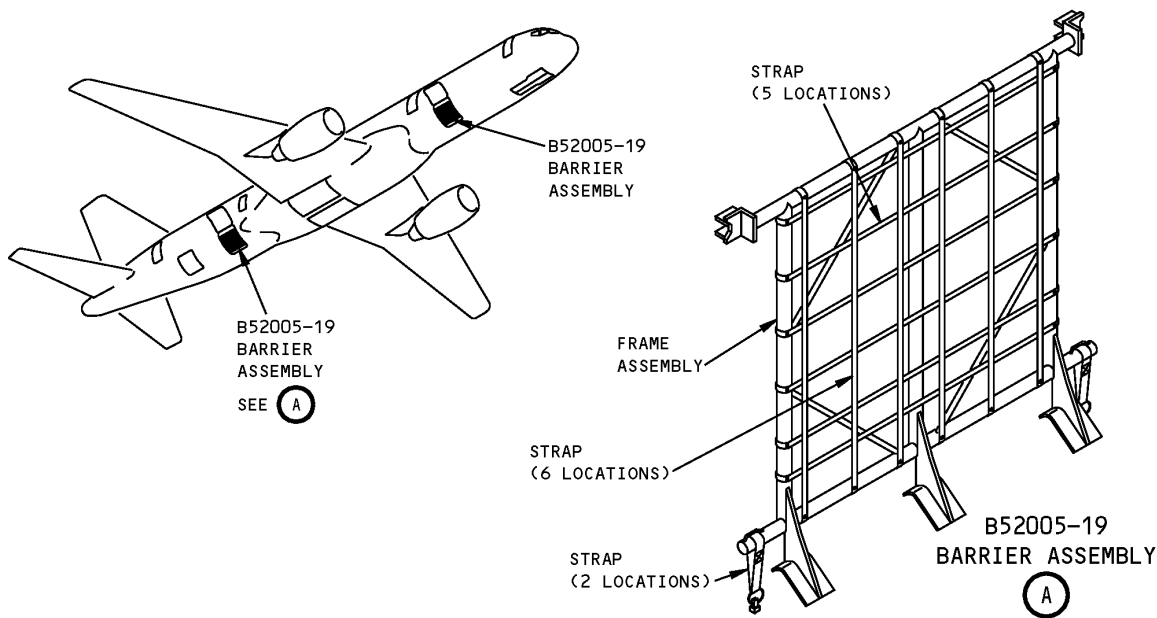
COMPONENT MAINTENANCE: NO

USAGE & DESCRIPTION: The B52005-19 safety barrier is used on all 757 airplanes. B52005 is used to prevent injury to personnel or cargo when the door is open and the unloading or loading equipment is not in place. Refer to AMM 52-34-00, AMM 52-34-05, AMM 52-34-06, AMM 52-34-08 and AMM 52-34-09 for complete usage instructions. B52005 are used at the number 1 and 2 cargo doors. B52005-19 consists of a B52005-19 barrier assembly contained in a storage box.

WEIGHT: 25 lbs (11 kg)

DIMENSIONS: 8 x 60 x 60 inches (203 x 1524 x 1524 mm)

NOTE: B52005-19 supersedes B52005-15.



Forward or Aft Cargo Door Safety Barrier
Figure 1

ILLUSTRATED TOOL AND EQUIPMENT MANUAL

PART NUMBER: B52008-1

NAME: ADAPTER - CLOCKING, NUMBER 1 AND 2 CARGO DOOR ROTARY ACTUATOR

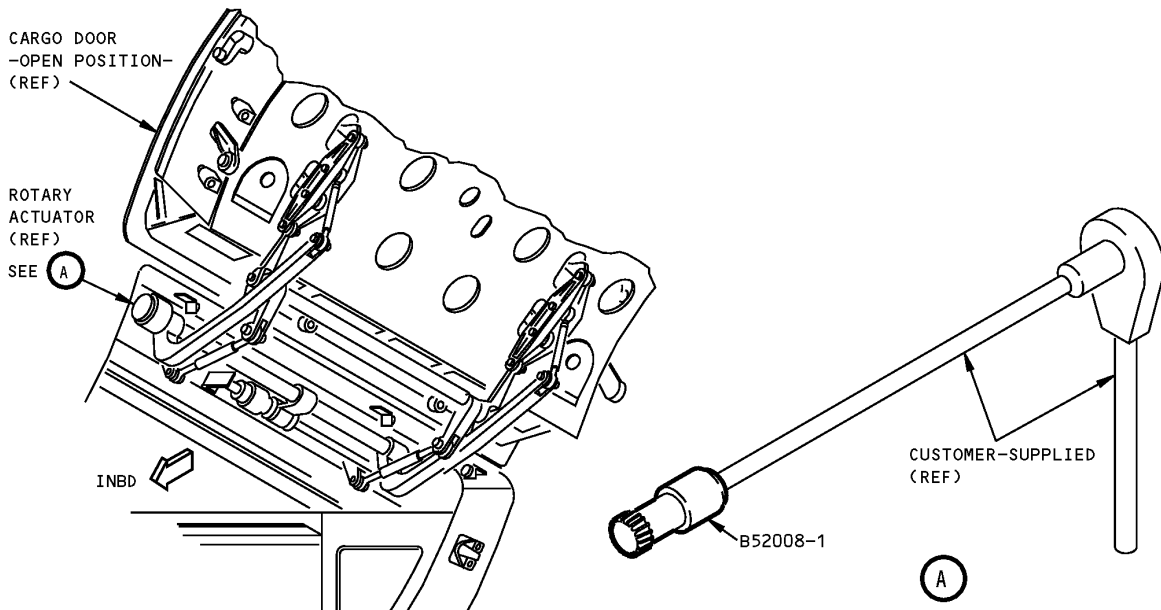
AIRPLANE MAINTENANCE: YES

COMPONENT MAINTENANCE: NO

USAGE & DESCRIPTION: The B52008-1 clocking adapter is used on all 757 airplanes. B52008 is used when installing a cargo door rotary actuator. B52008 is an external spline adapter used with a customer-furnished torque wrench and extension bar. B52008 allows the cargo door rotary actuator gear train to rotate while the output shaft lugs are aligned with the hinge arm lugs. Refer to AMM 52-34-06 for complete usage instructions. B52008-1 consists of a B52008-2 adapter contained in a storage box.

WEIGHT: 1 lb (0.45 kg)

DIMENSIONS: 2 x 9 x 12 inches (51 x 229 x 305 mm)



**Number 1 and 2 Cargo Door Rotary Actuator Clocking Adapter
Figure 1**



757

ILLUSTRATED TOOL AND EQUIPMENT MANUAL

PART NUMBER: B52010-1

NAME: FIXTURE - BACKLASH, NUMBER 1 & 2 DOOR MANUAL DRIVE GEARBOX ASSEMBLY

AIRPLANE MAINTENANCE: NO

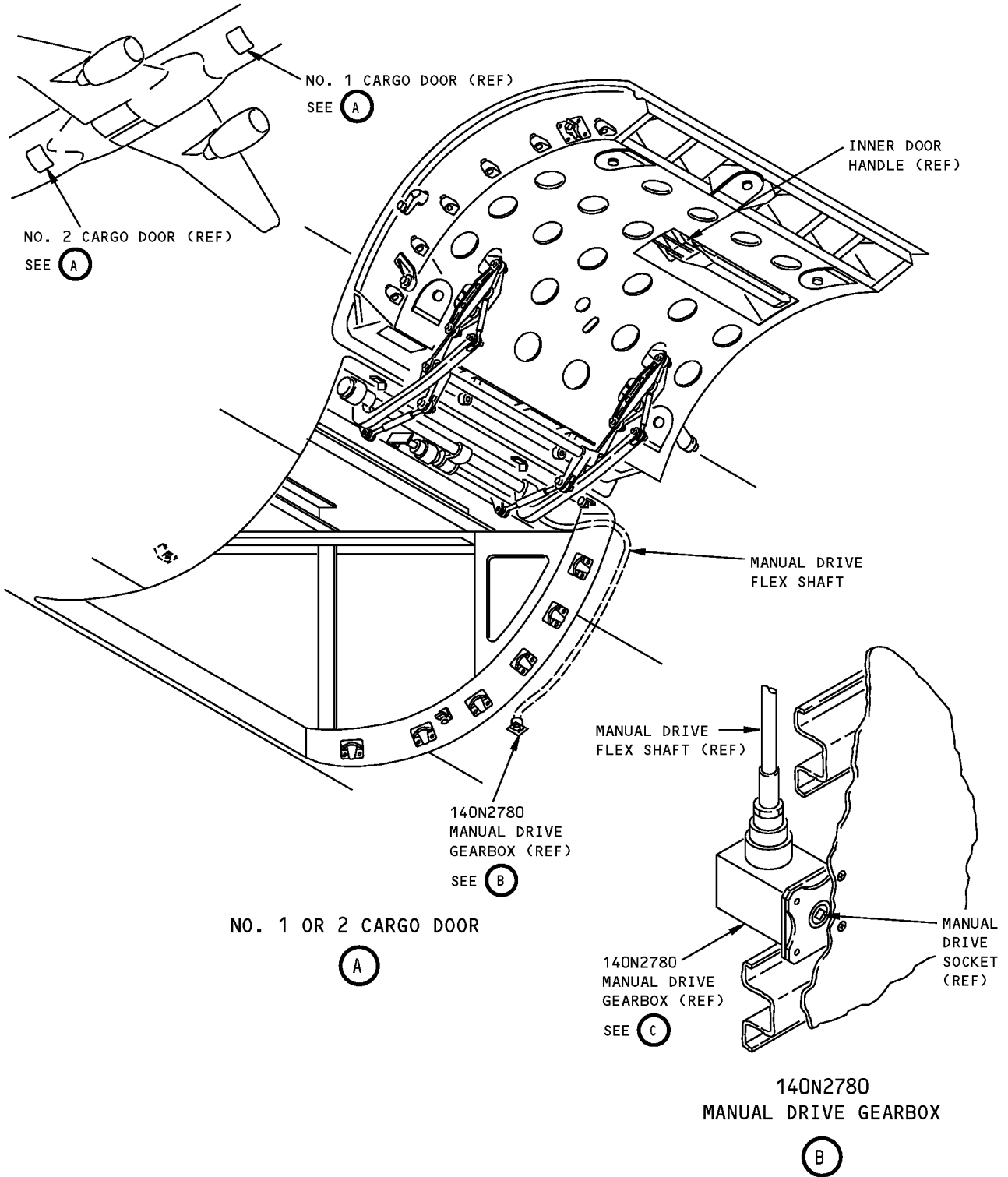
COMPONENT MAINTENANCE: YES

USAGE & DESCRIPTION: The B52010-1 fixture is used on all 757 airplanes. B52010 is used to measure the backlash in the 140N2780 manual drive gearbox assembly. B52010 applies outward axial loads which act with customer-furnished wrenches to measure the gear backlash. Refer to CMM 52-34-31 for complete usage instructions. B52010-1 consists of a B52010-2 fixture assembly contained in a storage box.

WEIGHT: 33 lbs (15 kg)

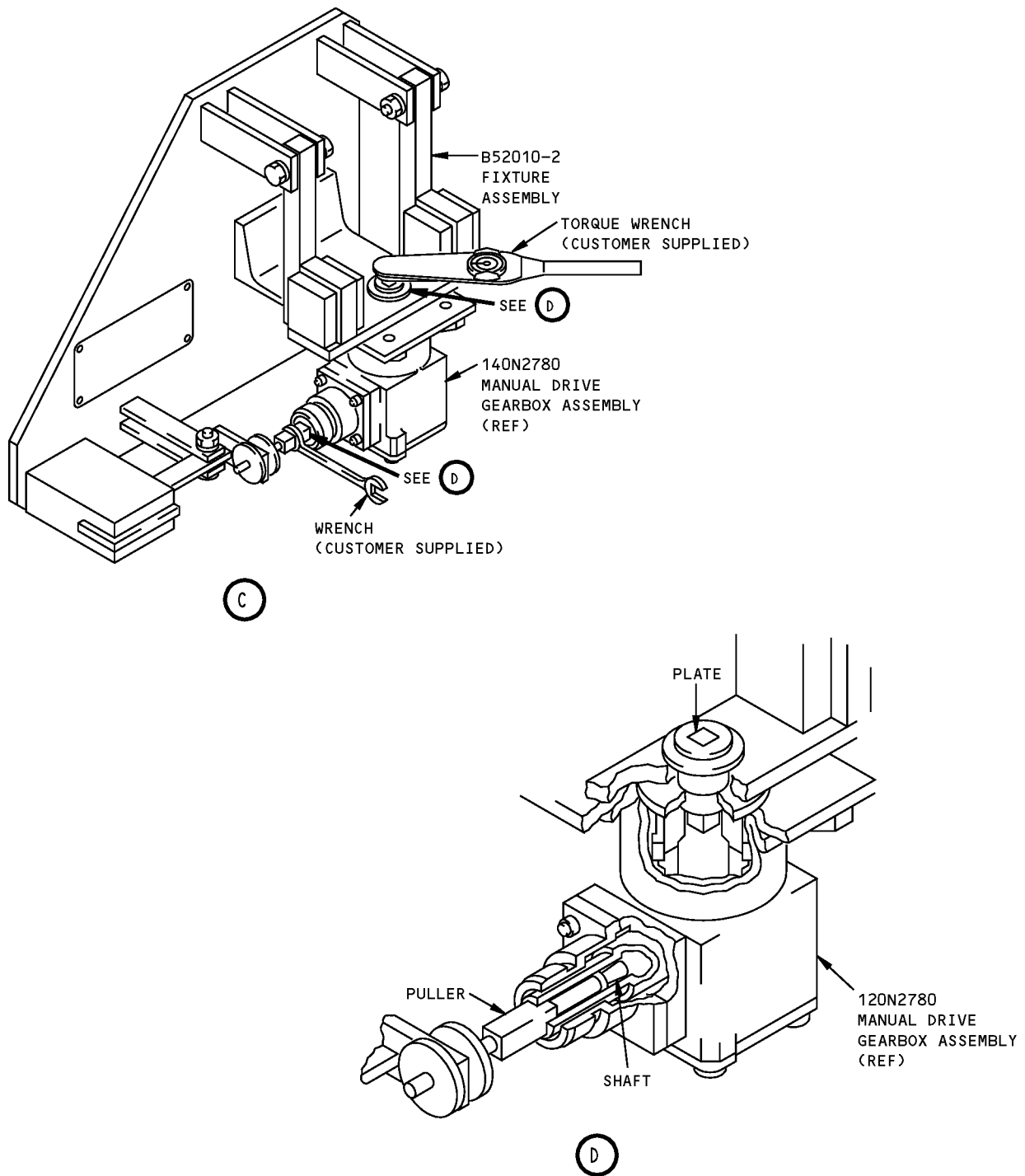
DIMENSIONS: 6 x 10 x 12 inches (152 x 254 x 305 mm)

ILLUSTRATED TOOL AND EQUIPMENT MANUAL



**Number 1 & 2 Door Manual Drive Gearbox Assembly Backlash Fixture
Figure 1 (Sheet 1 of 2)**

757
ILLUSTRATED TOOL AND EQUIPMENT MANUAL



**Number 1 & 2 Door Manual Drive Gearbox Assembly Backlash Fixture
Figure 1 (Sheet 2 of 2)**



757

ILLUSTRATED TOOL AND EQUIPMENT MANUAL

PART NUMBER: B52011-1

NAME: SAFETY BARRIER - NUMBER 3 CARGO DOOR

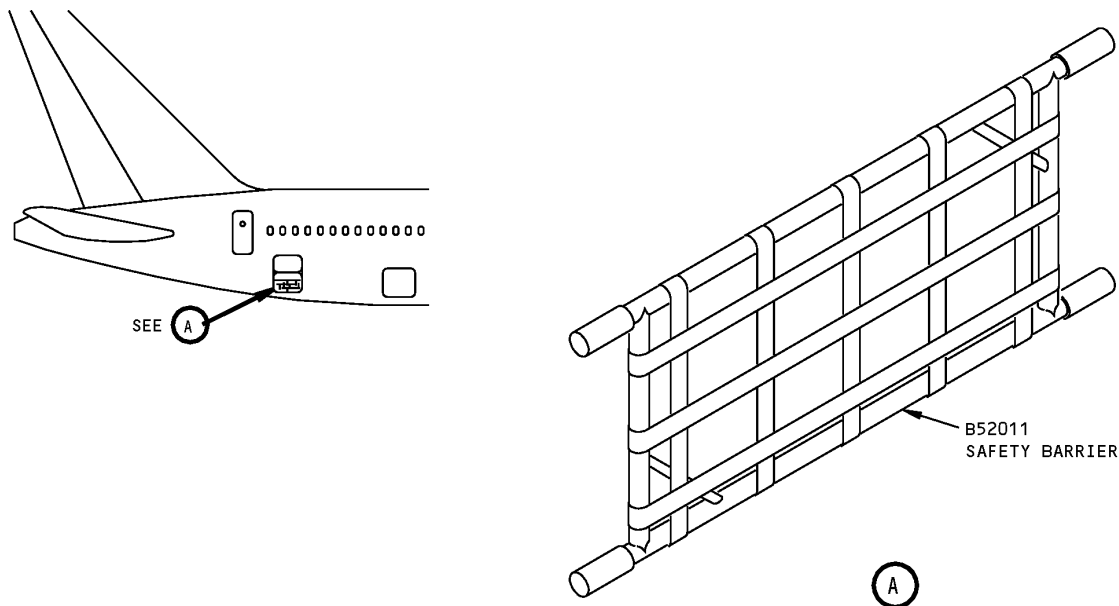
AIRPLANE MAINTENANCE: YES

COMPONENT MAINTENANCE: NO

USAGE & DESCRIPTION: The B52011-1 safety barrier is used on 757 airplanes equipped with the number 3 cargo door. B52011 is used when the number 3 cargo door is open or removed and loading or unloading equipment is not in use. Refer to AMM 52-36-01 for complete usage instructions. B52011 consists of a welded steel frame assembly, nylon straps and connecting hardware.

WEIGHT: 30 lbs (14 kg)

DIMENSIONS: 12 x 26 x 60 inches (305 x 660 x 1524 mm)



**Number 3 Cargo Door Safety Barrier
Figure 1**



757

ILLUSTRATED TOOL AND EQUIPMENT MANUAL

PART NUMBER: B52014-1

NAME: REPLACEMENT EQUIPMENT - BULK CARGO DOOR

AIRPLANE MAINTENANCE: YES

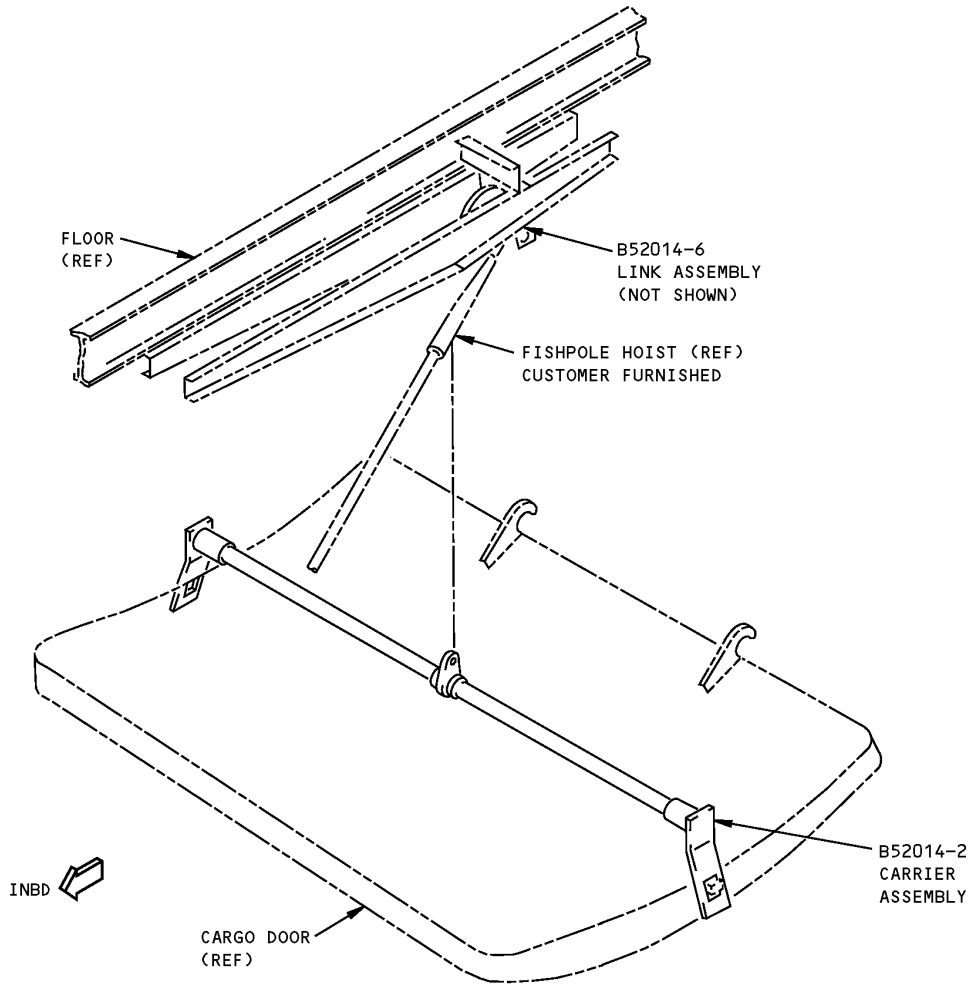
COMPONENT MAINTENANCE: NO

USAGE & DESCRIPTION: The B52014-1 replacement equipment is used on all 757 airplanes equipped with a number 3 cargo door. B52014 is used in conjunction with a customer-furnished fishpole hoist to remove and install the bulk (number 3) cargo door. Refer to AMM 52-36-01 for complete usage instructions. B52014-1 consists of a B52014-2 carrier assembly and a B52014-6 link assembly, both contained in a storage box.

WEIGHT: 20 lbs (9 kg)

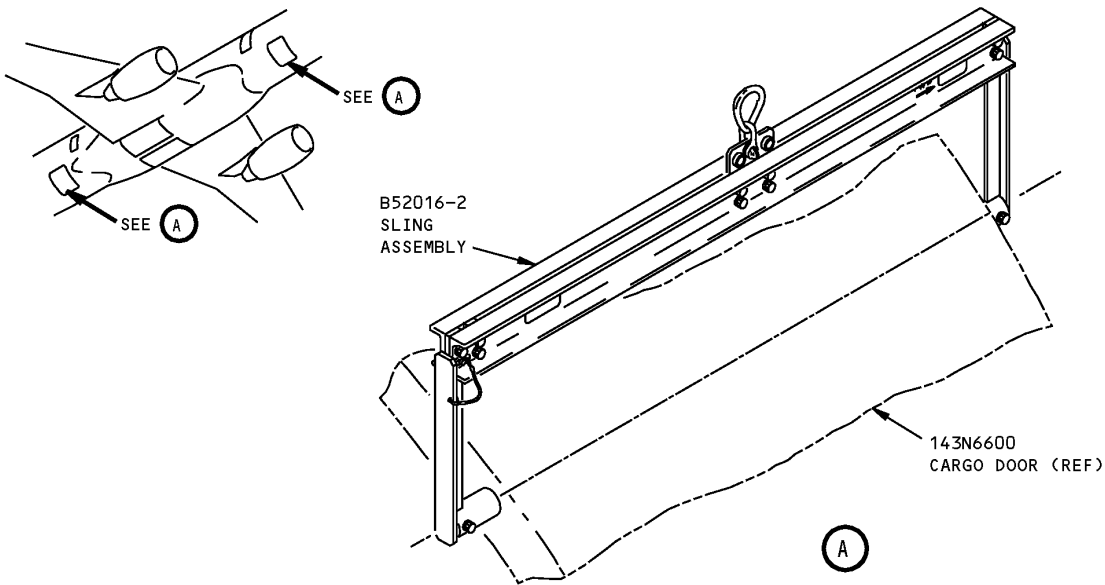
DIMENSIONS: 5 x 10 x 55 inches (127 x 254 x 1397 mm)

ILLUSTRATED TOOL AND EQUIPMENT MANUAL



**Bulk Cargo Door Replacement Equipment
Figure 1**

ILLUSTRATED TOOL AND EQUIPMENT MANUAL

PART NUMBER: B52016-1**NAME:** SLING - MAIN CARGO DOOR**AIRPLANE MAINTENANCE:** YES**COMPONENT MAINTENANCE:** YES**USAGE & DESCRIPTION:** The B52016-1 sling is used on all 7757 airplanes. B52016 is used with an customer-furnished overhead lift for removal or installation of the forward and aft cargo doors. Refer to AMM 52-34-00 and AMM 52-34-01 for complete usage instructions. B52016-1 consists of B52016-2 sling assembly contained in a storage box.**WEIGHT:** 35 lbs (16 kg)**DIMENSIONS:** 4 x 24 x 65 (102 x 610 x 1651 mm)

**Main Cargo Door Sling
Figure 1**



757

ILLUSTRATED TOOL AND EQUIPMENT MANUAL

PART NUMBER: B52002-1

NAME: SLING - MAIN CARGO DOOR

AIRPLANE MAINTENANCE: NO

COMPONENT MAINTENANCE: YES

USAGE & DESCRIPTION: The B52002-1 sling may be used on all 757 airplanes. B52002 is used with a customer-furnished overhead lifting device only for shop handling of the forward and aft cargo doors. The B52016 sling is used for removal or installation of the cargo doors on the airplane. Refer to the current B52002 drawing for complete usage instructions. B52002-1 consists of:

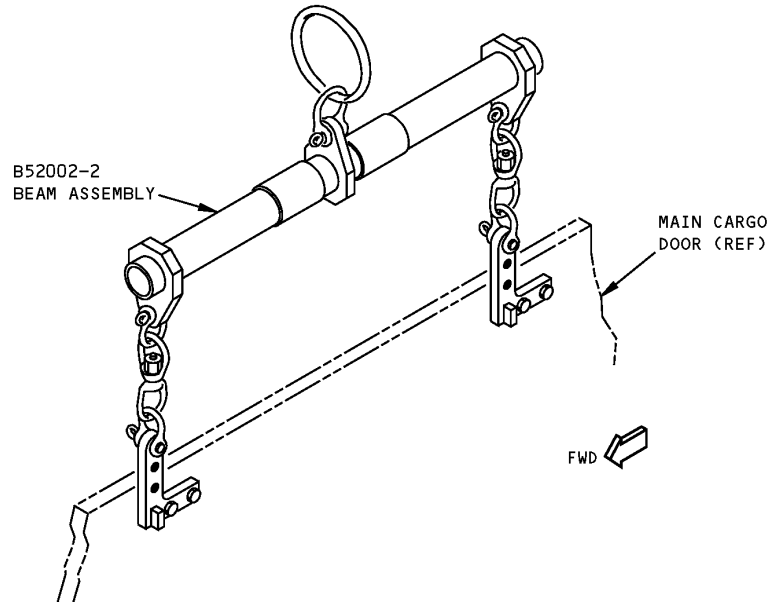
B52002-1		
QUANTITY	NOMENCLATURE	PART NUMBER
1	BEAM ASSEMBLY	B52002-2
2	STRAP ASSEMBLY	B52002-3
VARIOUS	CONNECTING HARDWARE	

WEIGHT: 12 lbs (5.4 kg)

DIMENSIONS: 12 x 12 x 24 inches (305 x 305 x 610 mm)

NOTE: B52016 supersedes B52002 for installation and removal on the airplane.

ILLUSTRATED TOOL AND EQUIPMENT MANUAL



**Main Cargo Door Sling
Figure 1**



757

ILLUSTRATED TOOL AND EQUIPMENT MANUAL

PART NUMBER: F70250-35, -36

NAME: LIFTING FIXTURE ASSEMBLY - MAIN CARGO DOOR

AIRPLANE MAINTENANCE: YES

COMPONENT MAINTENANCE: YES

USAGE & DESCRIPTION: The F70250-35 or -36 lifting fixture assemblies are used on 757 freighter and 757 combi airplanes.

In addition to 757 main cargo door use, F70250-35 contains a drop assembly suitable for use on 7 window, main cargo doors on 707 and 727 airplanes.

In addition to 757 main cargo door use, F70250-36 contains multiple drop assemblies suitable for use on 5 or 7 window, main cargo doors on 707, 727 and 737 airplanes.

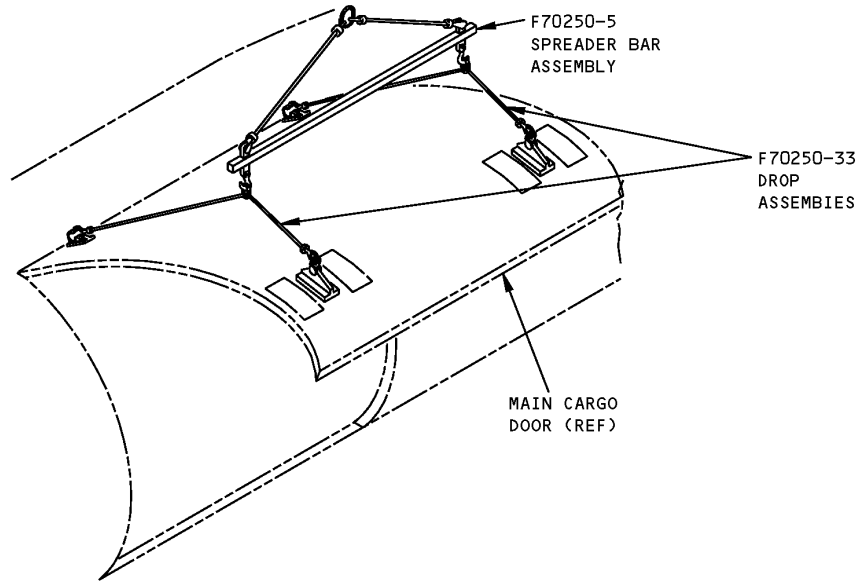
F70250 is used to remove or install the main deck cargo door. F70250 uses a customer-furnished overhead lift to a suspended F70250-5 spreader bar assembly incorporating safety hooks at each end. Two F70250-33 drop assemblies include hard point attaching adapters and are suspended from the safety hooks. The safety hooks attach to cargo door hard points. Refer to AMM 52-32-00 and AMM 52-32-01 and the current F70250 drawing for complete usage instructions. F70250-35 and -36 consists of:

F70250-35		
QUANTITY	NOMENCLATURE	PART NUMBER
1	SPREADER BAR ASSEMBLY	F70250-5
2	DROP ASSEMBLY	F70250-33
1	STORAGE BOX	

F70250-36		
QUANTITY	NOMENCLATURE	PART NUMBER
1	SPREADER BAR ASSEMBLY	F70250-5
2	DROP ASSEMBLY	F70250-33
2	DROP ASSEMBLY	F70250-13
2	DROP ASSEMBLY	F70250-14
1	STORAGE BOX	

NOTE: F70250-35 replaces F70250-1 for future procurement.
F70250-36 replaces F70250-4 for future procurement.

ILLUSTRATED TOOL AND EQUIPMENT MANUAL

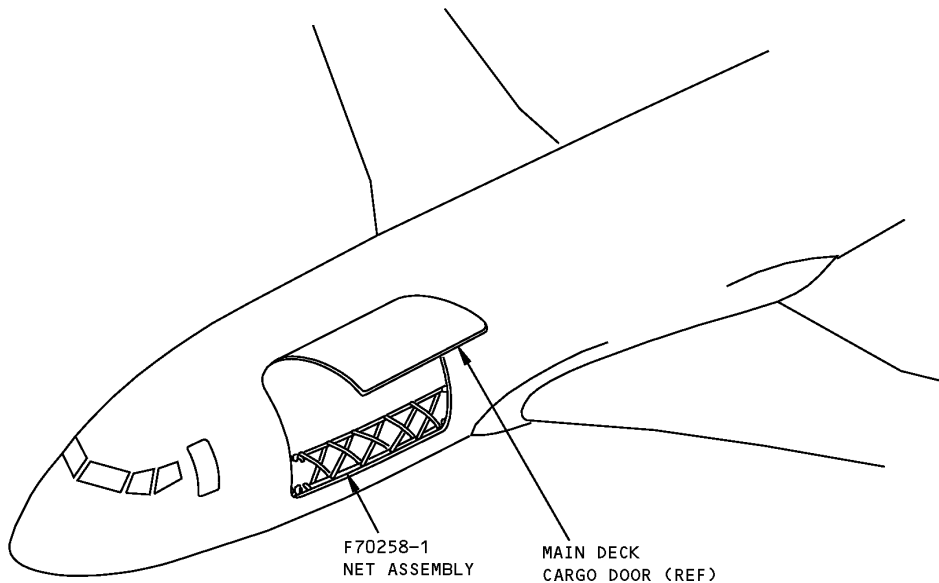


**Main Cargo Door Lifting Fixture Assembly
Figure 1**

ILLUSTRATED TOOL AND EQUIPMENT MANUAL

PART NUMBER: F70258-1**NAME:** PERSONNEL SAFETY BARRIER - MAIN DECK CARGO DOOR**AIRPLANE MAINTENANCE:** YES**COMPONENT MAINTENANCE:** NO

USAGE & DESCRIPTION: The F70258-1 personnel safety barrier is used on 757 freighter and combi airplanes. F70258 is used to provide a safety barrier for the forward main deck cargo door opening on the 757 cargo airplanes. Refer to AMM 25-56-12, AMM 52-09-05, AMM 52-32-00, AMM 52-32-01, AMM 52-32-05, AMM 52-32-06 and AMM 52-72-00 for complete usage instructions. F70258 is a net made of 1-inch nylon webbing which spans the cargo door opening. It is 36 inches high and attaches to the door jambs with quick-fastening Browline rings. Buckles at the forward attach points provide adjustment so the barrier can be tightened in place.



**Main Deck Cargo Door Personnel Safety Barrier
Figure 1**



757

ILLUSTRATED TOOL AND EQUIPMENT MANUAL

PART NUMBER: B52020-1

NAME: ROTATION EQUIPMENT - MAIN CARGO DOOR LATCHES

AIRPLANE MAINTENANCE: YES

COMPONENT MAINTENANCE: NO

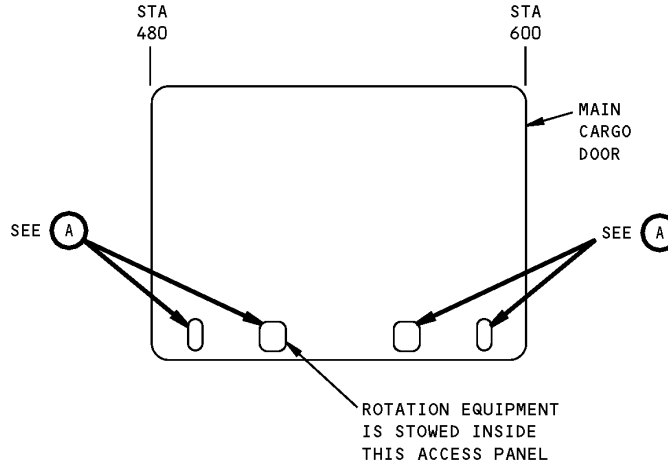
USAGE & DESCRIPTION: The B52020-1 rotation equipment is used on 757 freighter airplanes. B52020 is used to externally open the main deck cargo door with one or more of the latch mechanisms latched. The rotation equipment is found in the main cargo door. Remove the second latch actuator access panel from the front of the door to get access to the B52020 rotation equipment. B52020 is to be used only in the event that:

- 1) The door cannot be opened with electrical or manual operations.
- 2) The pressure doors are open.
- 3) A white flag is visible in one of the latch view ports.

Refer to AMM 52-32-00 for complete usage instructions. B52020-1 consists of a B52020-2 adapter assembly and a B52020-3 wrench.

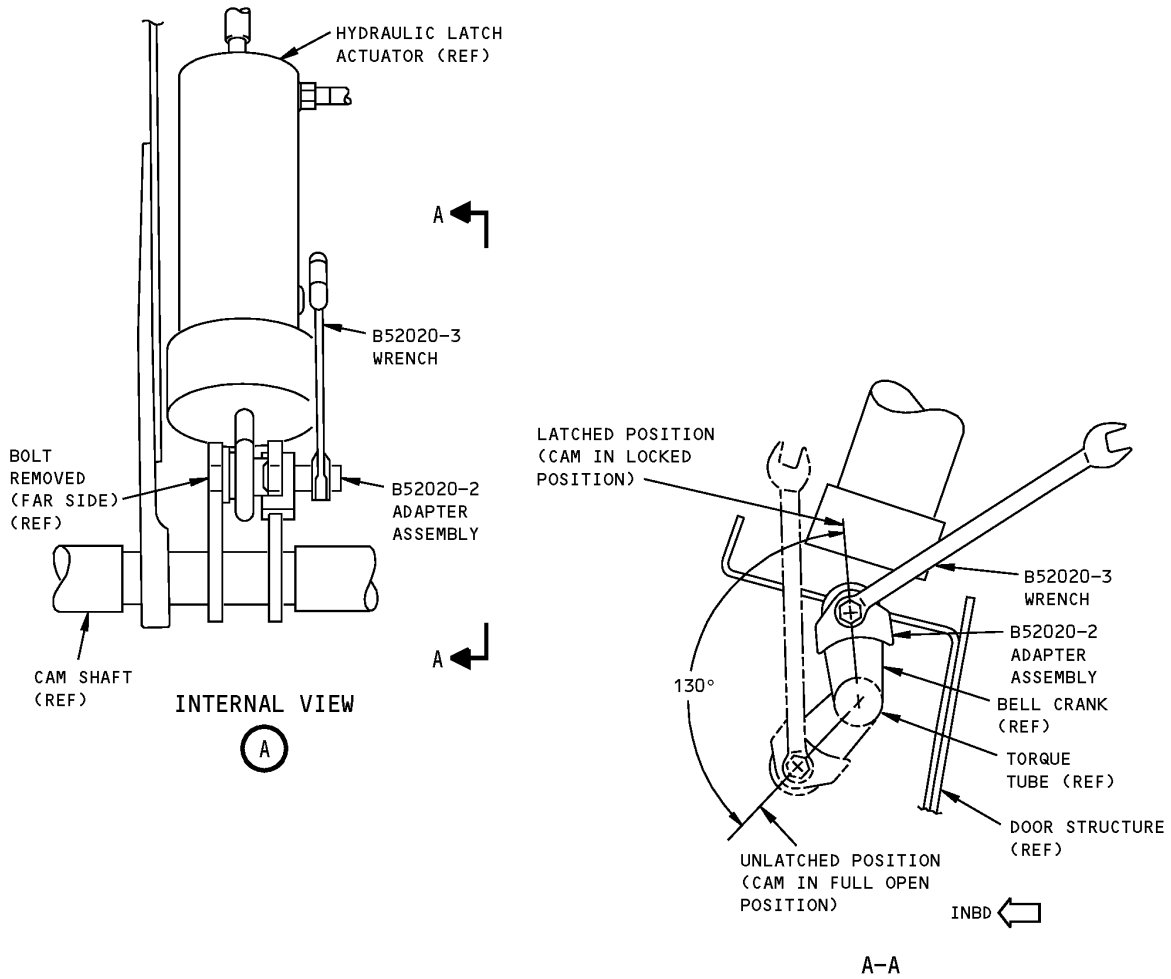
WEIGHT: 1 lb (0.45 kg)

DIMENSIONS: 1 x 2 x 2 inches (25 x 51 x 51 mm)



**Main Cargo Door Latches Rotation Equipment
Figure 1 (Sheet 1 of 2)**

ILLUSTRATED TOOL AND EQUIPMENT MANUAL



**Main Cargo Door Latches Rotation Equipment
Figure 1 (Sheet 2 of 2)**



757

ILLUSTRATED TOOL AND EQUIPMENT MANUAL

PART NUMBER: C52009-2

NAME: LIFTING FIXTURE EQUIPMENT - MAIN DECK CARGO DOOR

AIRPLANE MAINTENANCE: YES

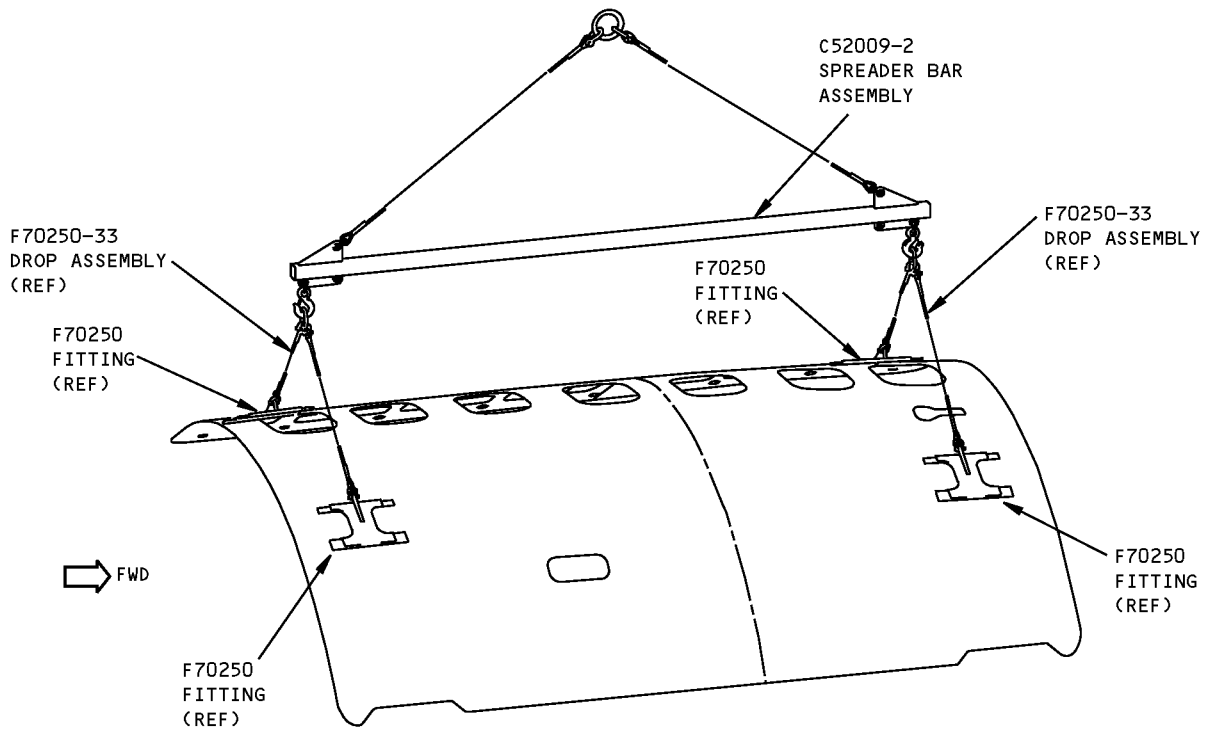
COMPONENT MAINTENANCE: NO

USAGE & DESCRIPTION: The C52009-2 lifting fixture equipment is used on 757 airplanes equipped with a main deck cargo door (freighter and combi airplanes). C52009 is used in conjunction with the F70250-33 drop assembly to remove and install the main deck cargo door. The C52009-2 spreader bar assembly may be used with the proper F70250 drop assemblies to remove and install the main deck cargo door of the 707,727 and 737 airplanes. Refer to AMM 52-32-00 and AMM 52-32-02 for complete usage instructions. C52009-2 consists of:

C52009-2		
QUANTITY	NOMENCLATURE	PART NUMBER
1	SPREADER BAR	C52009-6
2	CABLE ASSEMBLY	C52009-7
2	SHACKLE	S-209-3/8
2	SHACKLE	S-213-3/8
2	SHACKLE	S-213-5/8
2	HOOK	S-320N-1 1/2
1	WELDLESS RING	S-643-7/8 X 4

WEIGHT: 180 lbs (82 kg)

DIMENSIONS: 15 x 20 x 119 inches (381 x 508 x 3023 mm)



**Main Deck Cargo Door Lifting Fixture Equipment
Figure 1**



757

ILLUSTRATED TOOL AND EQUIPMENT MANUAL

PART NUMBER: F71313-19, -44

NAME: WRENCH - SOCKET, ROD END BEARING

AIRPLANE MAINTENANCE: NO

COMPONENT MAINTENANCE: YES

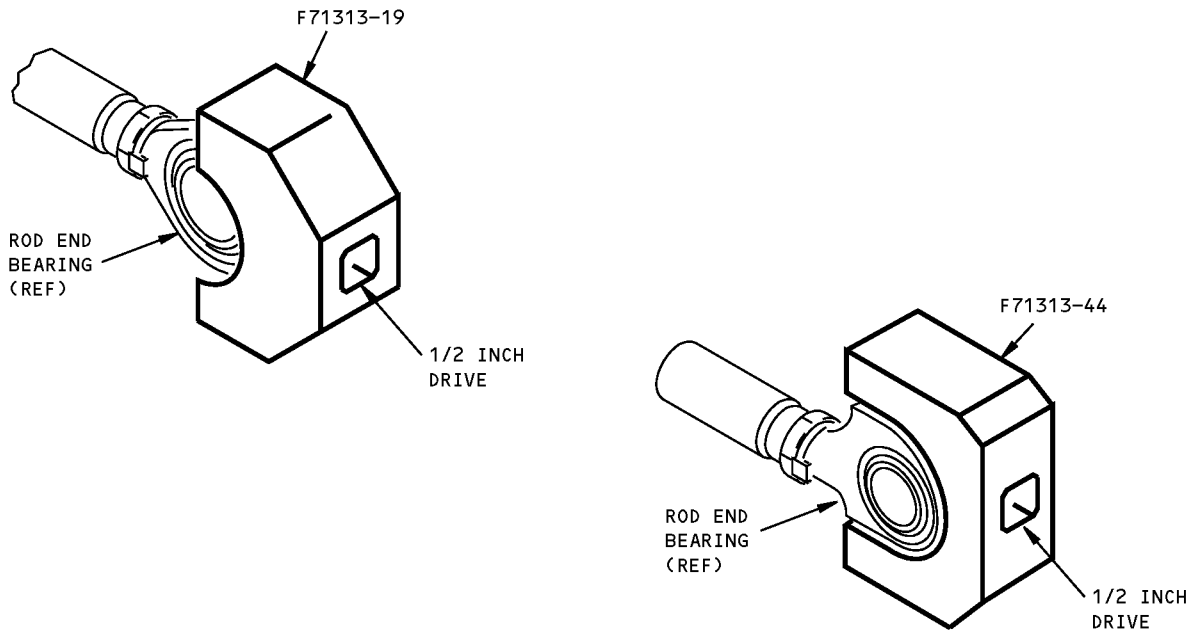
USAGE & DESCRIPTION: F71313-19 or -44 wrenches are used on 757 package freighters or 757 combi's on the 65-25326 main cargo door assembly. F71313 are used on bearing part number 69-30541. The F71313 wrenches are used to hold or turn rod end bearings without damage during assembly, disassembly or adjustment. Refer to the Standard Overhaul Practices Manual (SOPM) 20-50-03 for complete usage instructions. F71313-19 or -44 are cast from manganese bronze, SAE 430, Type B, or machined from manganese bronze bar stock ZZ-M-80, Class B.

WEIGHT: 1 lb (0.45 kg)

DIMENSIONS: 2 x 3 x 4 inches (51 x 76 x 102 mm)

NOTE: F71313-44 replaces F71313-19 for future procurement. F71313-19

757
ILLUSTRATED TOOL AND EQUIPMENT MANUAL



Rod End Bearing Socket Wrench
Figure 1



757

ILLUSTRATED TOOL AND EQUIPMENT MANUAL

PART NUMBER: B52006-1

NAME: SAFETY BARRIER - ELECTRICAL/ELECTRONIC ACCESS DOOR

AIRPLANE MAINTENANCE: YES

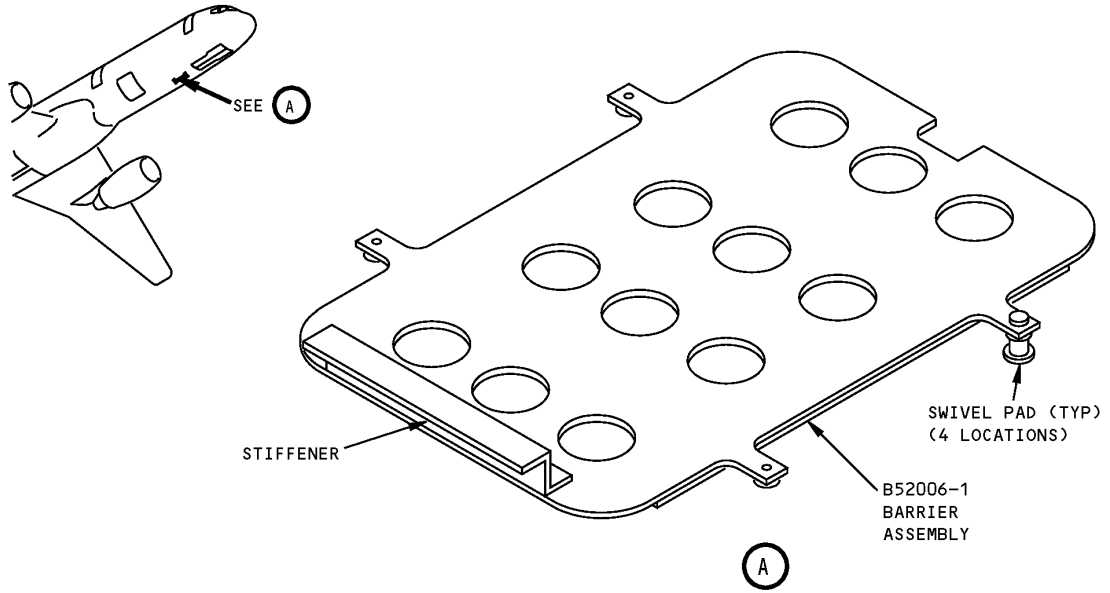
COMPONENT MAINTENANCE: NO

USAGE & DESCRIPTION: The B52006-1 safety barrier is used on all 757 airplanes. B52006 is installed over the electrical/electronic access hatch door stops to prevent personnel injury and equipment damage. Refer to AMM 28-21-04, AMM 52-48-00 and AMM 52-48-02 for complete usage instructions. B52006-1 consists of:

B52006-1		
QUANTITY	NOMENCLATURE	PART NUMBER
1	PLATE ASSEMBLY	B52006-2
4	SPACER	B52006-8
4	BOLT	B52006-10
4	SWIVEL PADS	CL-3-SPA

WEIGHT: 20 lbs (9 kg)

DIMENSIONS: 4 x 22 x 32 inches (102 x 559 x 813 mm)



Electrical/Electronic Access Door Safety Barrier
Figure 1



757

ILLUSTRATED TOOL AND EQUIPMENT MANUAL

PART NUMBER: B52026-1, -2

NAME: SERVICE PLATFORMS - ELEVATOR/SERVICE ACCESS DOOR

AIRPLANE MAINTENANCE: YES

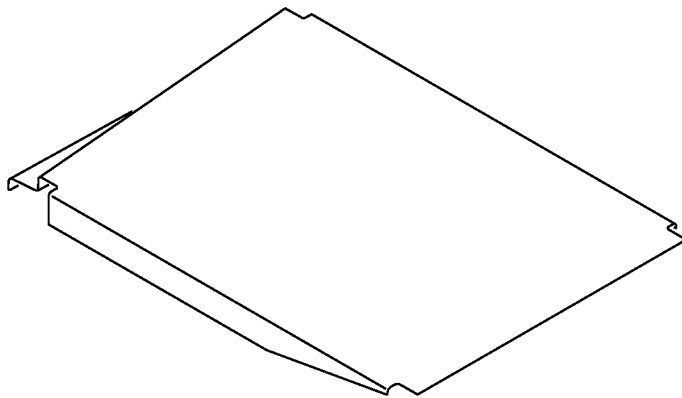
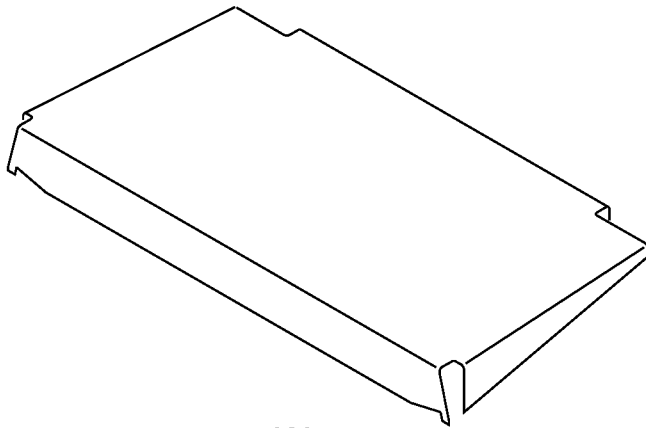
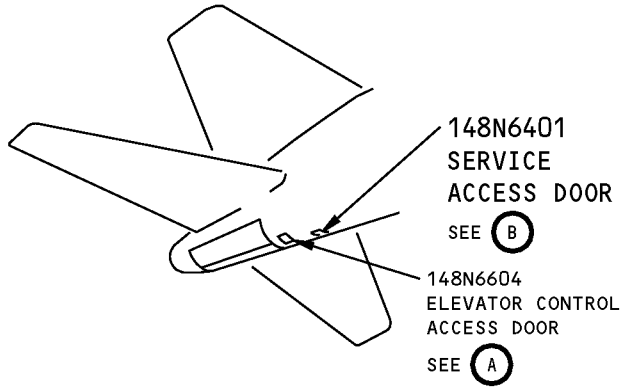
COMPONENT MAINTENANCE: NO

USAGE & DESCRIPTION: The B52026-1 and -2 are used on all 757 airplanes. The B52026-1 becomes the work platform when placed over the opening of the 148N6604 elevator control access door. The B52026-2 becomes the work platform when placed over the opening of the 148N6401 service access door. Refer to AMM 52-48-06 and AMM 52-48-07 for complete usage instructions. B52026-1 consists of the B52026-1 elevator platform. B52026-2 consists of the B52026-2 service platform.

WEIGHT: B52026-1 - 10 lbs (4.5 kg)
B52026-2 - 10 lbs (4.5 kg)

DIMENSIONS: B52026-1 - 4 x 17 x 33 inches (102 x 432 x 838 mm)
B52026-1 - 4 x 22 x 32 inches (102 x 559 x 819 mm)

ILLUSTRATED TOOL AND EQUIPMENT MANUAL



**Elevator/Service Access Door Service Platforms
Figure 1**



757

ILLUSTRATED TOOL AND EQUIPMENT MANUAL

PART NUMBER: A52037-1

NAME: TEST BOX - FLIGHT DECK ACCESS SYSTEM (FDAS)

AIRPLANE MAINTENANCE: NO

COMPONENT MAINTENANCE: YES

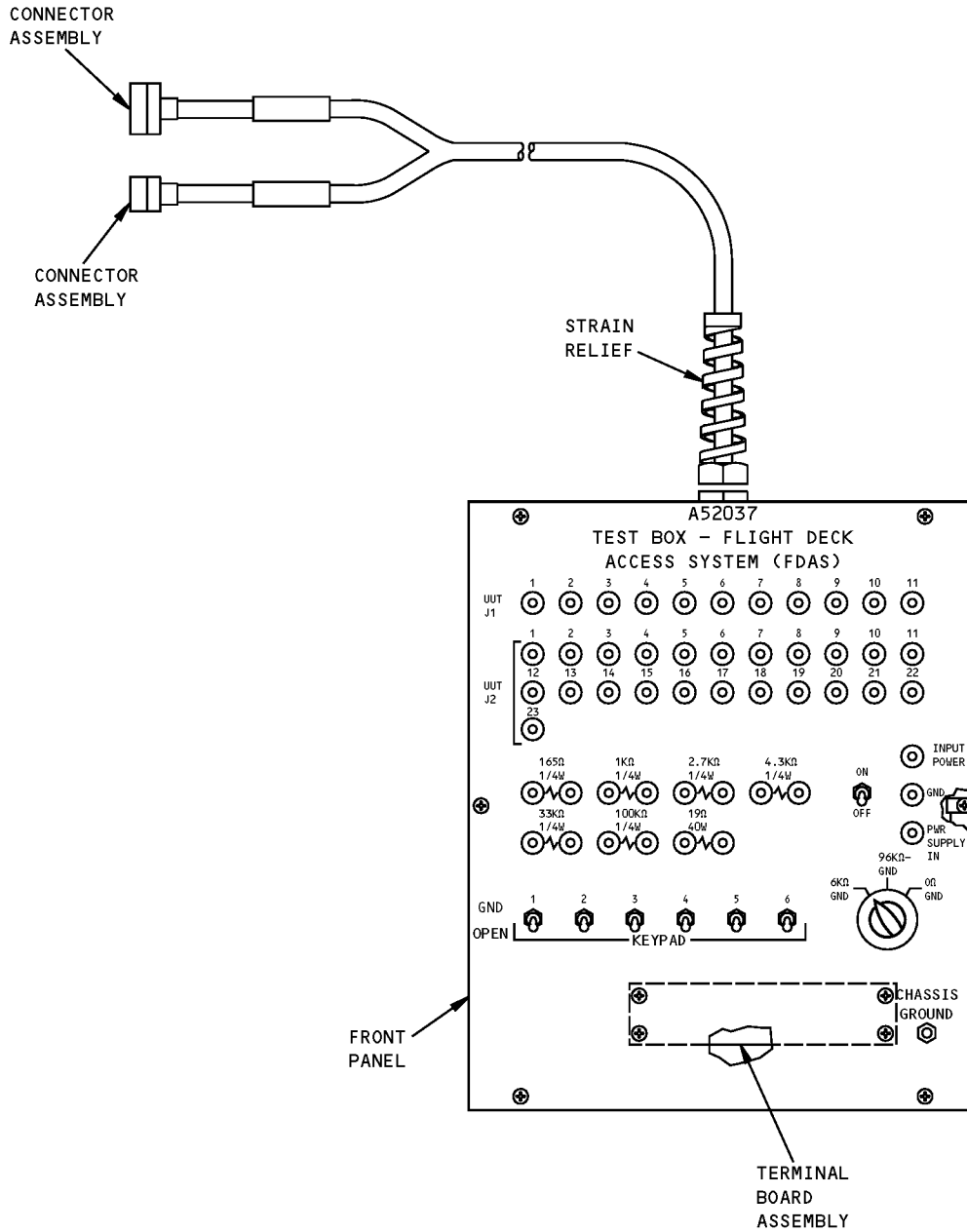
USAGE & DESCRIPTION: The A52037 drawing has been transferred to BAE Systems and will no longer be revised by Boeing. The A52037 inclusion in the 757 ITEM is for information and historical purposes only.

The A52037-1 test box is used during component maintenance on 757 airplanes equipped with the 285T0852 or 285T0855 FDAS keypad module assembly. A52037 is used to functionally test the FDAS keypad and chime module line replaceable units (LRU). A52037 is used in conjunction with various power supplies, multimeters and a Tektronics 540 oscilloscope (or equivalent). Refer to CMM 52-51-03, CMM 52-51-04, CMM 52-51-07 and CMM 52-51-08 for complete usage instructions. A52037-1 consists of switches, resistors, banana jacks, connectors and electrical circuitry mounted on a panel and chassis assembly.

WEIGHT: 8 lbs (3.6 kg)

DIMENSIONS: 5 x 11 x 15 inches (127 x 279 x 381 mm)

757
ILLUSTRATED TOOL AND EQUIPMENT MANUAL



FDAS Test Box
Figure 1