

CHAPTER

57

WINGS



757
ILLUSTRATED TOOL AND EQUIPMENT MANUAL

CHAPTER 57
WINGS

Subject/Page	Date	Subject/Page	Date	Subject/Page	Date
EFFECTIVE PAGES					
1	Sep 20/2008				
2	BLANK				
57-CONTENTS					
R 1	Sep 20/2008				
2	BLANK				
57-00-01					
A 1	Sep 20/2008				
A 2	BLANK				
57-20-01					
1	Sep 20/2006				
2	Sep 20/2006				
3	Sep 20/2006				
4	BLANK				
57-50-01					
1	Sep 20/2006				
2	Sep 20/2006				
3	Sep 20/2006				
4	BLANK				
57-50-02					
1	Sep 20/2006				
2	BLANK				
57-50-03					
1	Sep 20/2006				
2	Sep 20/2006				
3	Sep 20/2006				
4	Sep 20/2006				
57-50-04					
1	Sep 20/2006				
2	Sep 20/2006				
3	Sep 20/2006				
4	BLANK				

A = Added, R = Revised, O = Overflow, D = Deleted

57-EFFECTIVE PAGES



757

ILLUSTRATED TOOL AND EQUIPMENT MANUAL

TABLE OF CONTENTS

<u>Subject</u>	<u>Title</u>	<u>Part No.</u>
57-	WINGS	
57-00-01	Protective Equipment - Protective Ring For Lower Wing Panel Access Door	C28013-5
57-20-01	REMOVAL/INSTALLATION EQUIPMENT - FLUTTER WEIGHTS	B57006-1
57-50-01	SOCKET SET - TRUNNION BEARING RETENTION NUTS	B32027-1
57-50-03	ADAPTER EQUIPMENT - TRUNNION BEARING AND MOUNT, MAIN LANDING GEAR (MLG) INSTALLATION AND REMOVAL	B57003-3, -33, -34, -4
57-50-04	SOCKET ASSEMBLY - RETENTION NUT, ACTUATOR SUPPORT, MAIN LANDING GEAR (MLG) BEAM	B57005-1

57-CONTENTS

Page 1
Sep 20/2008

D634N501

ILLUSTRATED TOOL AND EQUIPMENT MANUAL

PART NUMBER: C28013-5

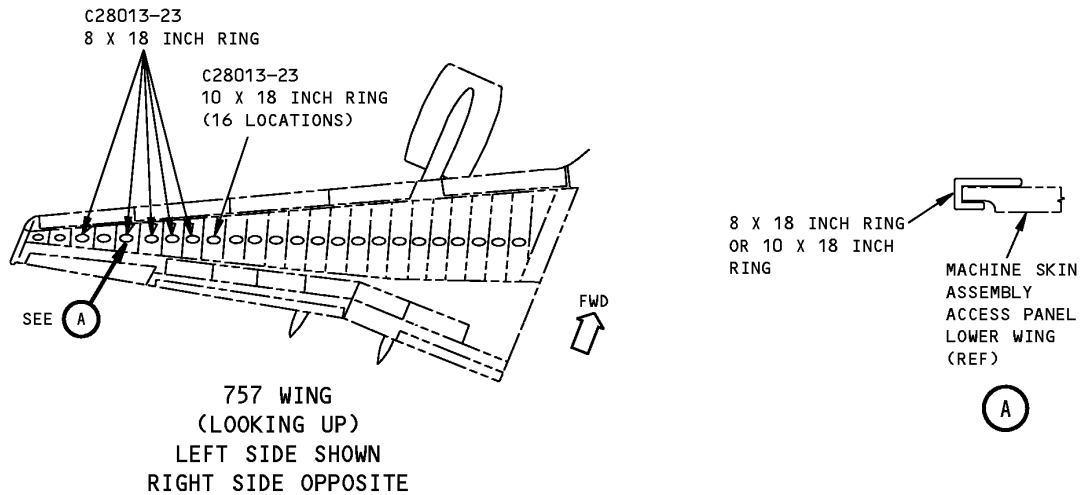
NAME: Protective Equipment - Protective Ring For Lower Wing Panel Access Door

AIRPLANE MAINTENANCE: YES

COMPONENT MAINTENANCE: NO

USAGE & DESCRIPTION: The C28013-5 protective equipment is used on all 757 airplanes. C28013 is used to protect the edges of the fuel cell access openings on the lower wing panels during wing structural inspections. Refer to the current C28013 drawing and AMM 57-31-01 for complete usage instructions. C28013-5 consists of:

C28013-5		
QUANTITY	NOMENCLATURE	PART NUMBER
10	8-INCH x 18-INCH RING	C28013-23
32	10-INCH x 18-INCH RING	C28013-28
1	STORAGE BOX	



1597633 S0000296120_V1

**Protective Ring For Lower Wing Panel Access Door
Figure 1**



757

ILLUSTRATED TOOL AND EQUIPMENT MANUAL

PART NUMBER: B57006-1

NAME: REMOVAL/INSTALLATION EQUIPMENT - FLUTTER WEIGHTS

AIRPLANE MAINTENANCE: YES

COMPONENT MAINTENANCE: NO

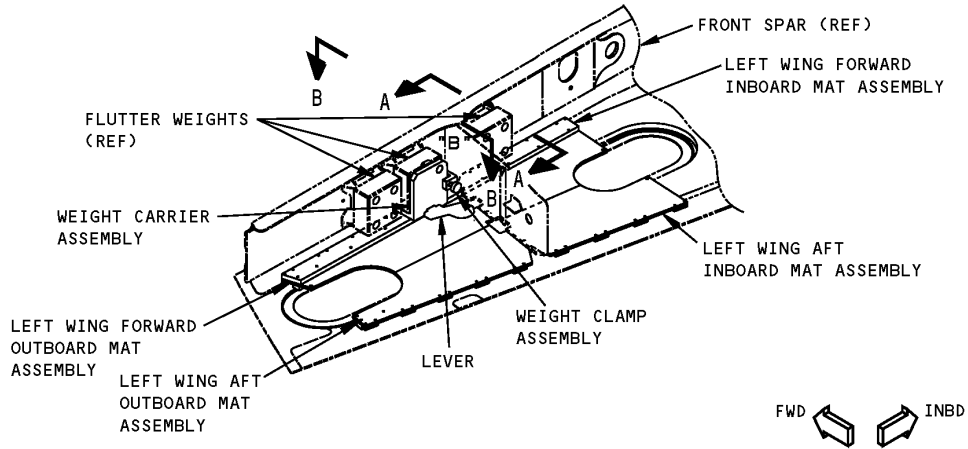
USAGE & DESCRIPTION: The B57006-1 tool is used only on 757-300 airplanes equipped with Pratt and Whitney PW2000 series engines. B57006 includes mat equipment to provide protection to the interior of the wingbox in the event that the heavy (25 pound) tungsten flutter weights are dropped during removal or installation. There is also a lever, weight carrier and clamp assemblies to aid in removal and installation of the weights from the flight controls. Refer to AMM 57-27-01 for complete removal and installation procedure. The B57006-1 consists of:

B57006-1		
QUANTITY	NOMENCLATURE	PART NUMBER
1	LEFT WING FORWARD OUTBOARD MAT ASSEMBLY	B57006-2
1	RIGHT WING FORWARD OUTBOARD MAT ASSEMBLY	B57006-3
1	LEFT WING FORWARD INBOARD MAT ASSEMBLY	B57006-4
1	RIGHT WING FORWARD INBOARD MAT ASSEMBLY	B57006-5
1	LEFT WING AFT OUTBOARD MAT ASSEMBLY	B57006-6
1	RIGHT WING AFT OUTBOARD MAT ASSEMBLY	B57006-7
1	LEFT WING AFT INBOARD MAT ASSEMBLY	B57006-8
1	RIGHT WING AFT INBOARD MAT ASSEMBLY	B57006-9
1	WEIGHT CARRIER ASSEMBLY	B57006-10
1	WEIGHT CARRIER ASSEMBLY	B57006-11
1	LEVER	B57006-13
1	STORAGE BOX	

WEIGHT: 9 lbs (4.1 kg)

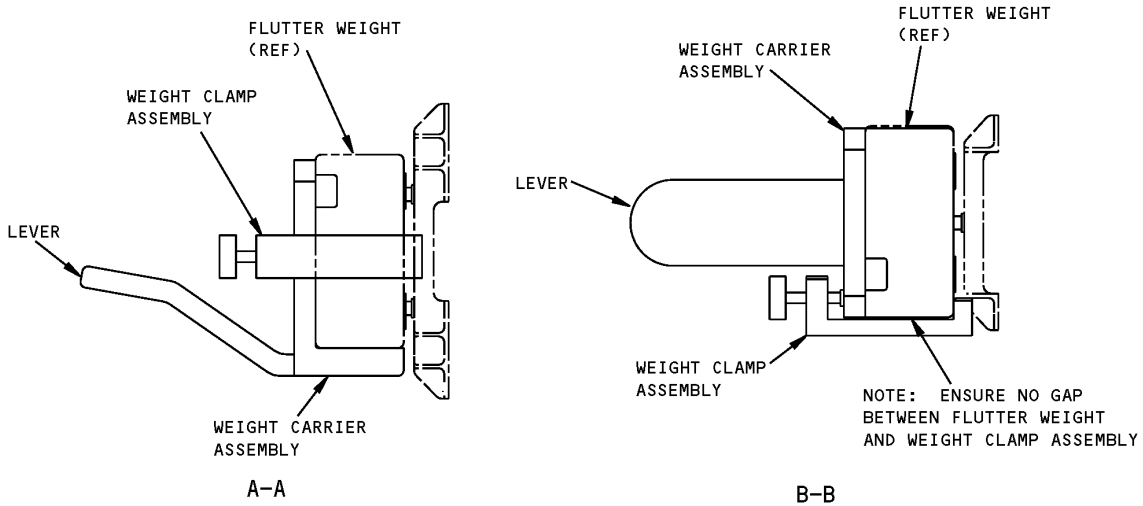
DIMENSIONS: 5 x 9 x 22 inches (127 x 229 x 559 mm)

ILLUSTRATED TOOL AND EQUIPMENT MANUAL



FLUTTER WEIGHT REMOVAL/INSTALLATION EQUIPMENT
(REAR SPAR AND TOP PANEL OMITTED FOR CLARITY)

Flutter Weights Removal/Installation Equipment
Figure 1 (Sheet 1 of 2)



Flutter Weights Removal/Installation Equipment
Figure 1 (Sheet 2 of 2)



757

ILLUSTRATED TOOL AND EQUIPMENT MANUAL

REPAIRABLE/REPLACEABLE PARTS			
ITEM NO.	PART NO.	NOMENCLATURE	VENDOR CODE
1	CL-18-SHS-S	SWIVEL HEAD SCREW	V99862



757

ILLUSTRATED TOOL AND EQUIPMENT MANUAL

PART NUMBER: B32027-1

NAME: SOCKET SET - TRUNNION BEARING RETENTION NUTS

AIRPLANE MAINTENANCE: YES

COMPONENT MAINTENANCE: YES

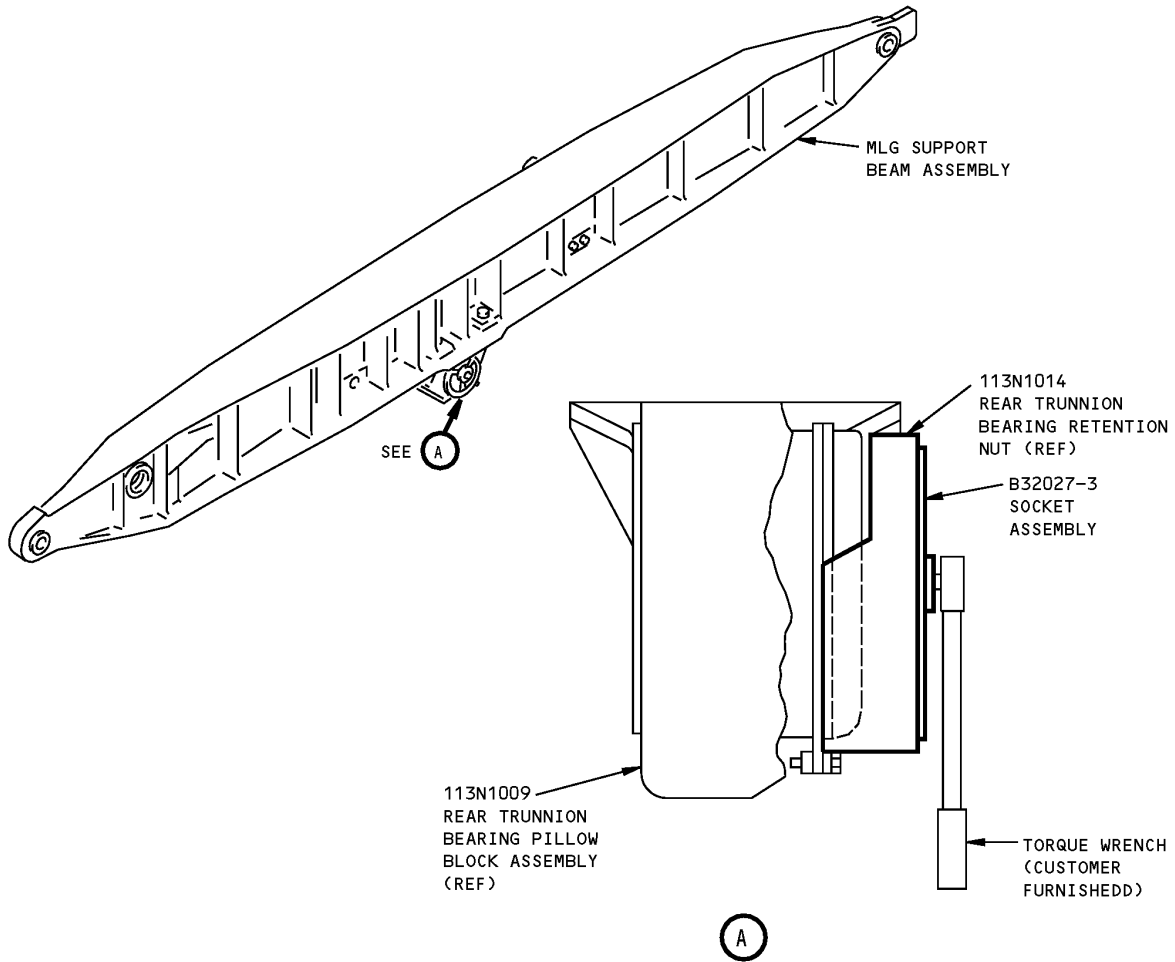
USAGE & DESCRIPTION: The B32027-1 socket set is used on all 757 airplanes. B32027 is used to remove and install the rear and forward trunnion bearing retention nuts in the main landing gear support beam assembly. Refer to AMM 57-54-07 and CMM 32-32-16 for complete usage instructions. B32027-1 consists of:

B32027-1		
QUANTITY	NOMENCLATURE	PART NUMBER
1	SOCKET ASSEMBLY	B32027-2
1	SOCKET ASSEMBLY	B32027-3
1	STORAGE BOX	

WEIGHT: 20 lbs (9 kg)

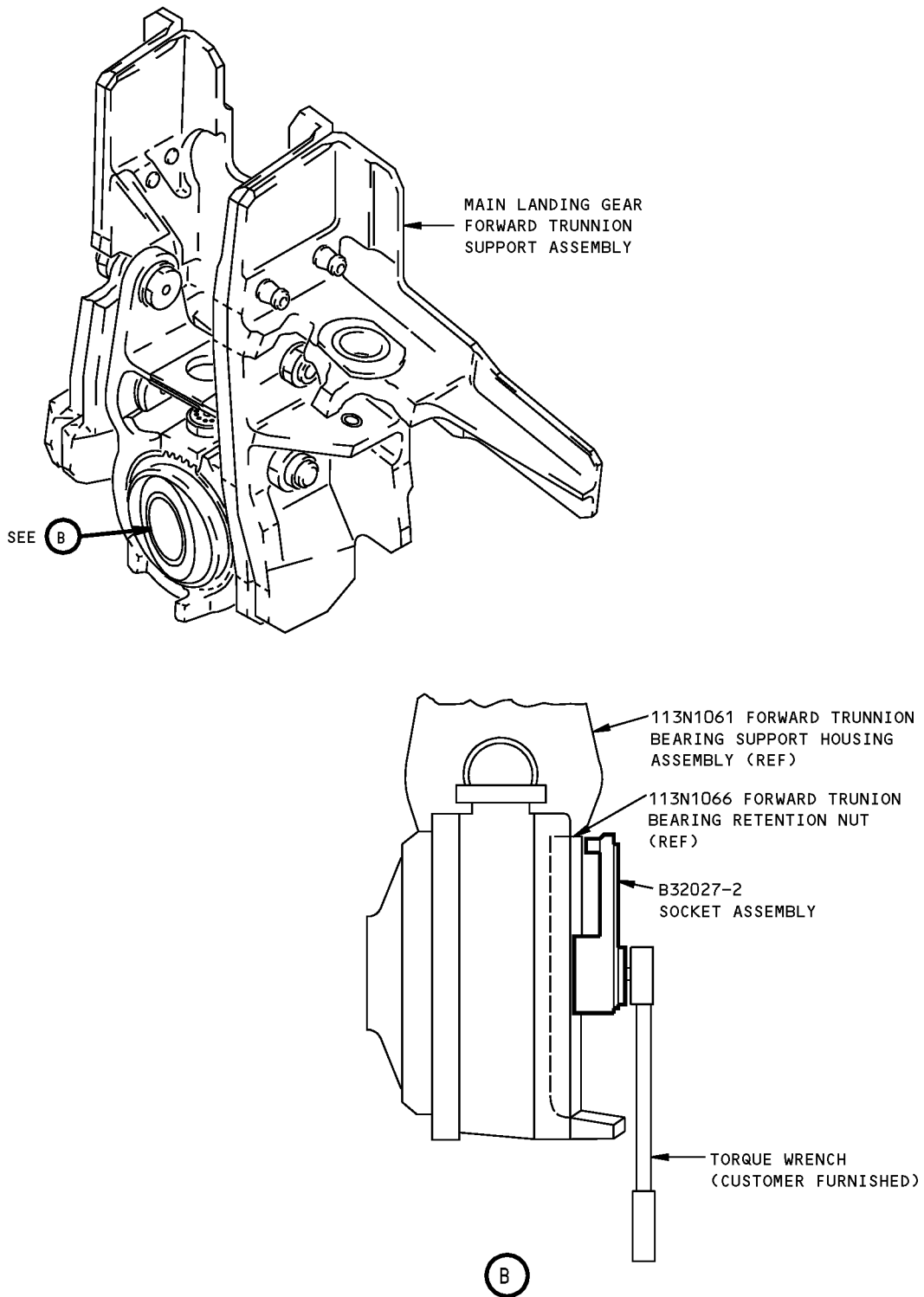
DIMENSIONS: 6 x 12 x 22 inches (152 x 305 x 559 mm)

**757
ILLUSTRATED TOOL AND EQUIPMENT MANUAL**



**Trunnion Bearing Retention Nuts Socket Set
Figure 1 (Sheet 1 of 2)**

**757
ILLUSTRATED TOOL AND EQUIPMENT MANUAL**



**Trunnion Bearing Retention Nuts Socket Set
Figure 1 (Sheet 2 of 2)**



757

ILLUSTRATED TOOL AND EQUIPMENT MANUAL

PART NUMBER: B12006-1 WAS MOVED TO 12-20-02



757

ILLUSTRATED TOOL AND EQUIPMENT MANUAL

PART NUMBER: B57003-3, -4, -33, -34

NAME: ADAPTER EQUIPMENT - TRUNNION BEARING AND MOUNT, MAIN LANDING GEAR (MLG) INSTALLATION AND REMOVAL

AIRPLANE MAINTENANCE: YES

COMPONENT MAINTENANCE: NO

USAGE & DESCRIPTION: The B57003-3, -4, -34 or -33 adapter equipment is used on all 757 airplanes. B57003 provides a reaction point for the torque multiplier on the MLG forward and aft trunnion bearing retention nut.

B57003-3 adapter equipment consists of a reaction fitting and socket assembly which is used to torque the bearing retention nut of the MLG rear trunnion.

B57003-4 adapter equipment consists of a reaction fitting and socket assembly which is used to torque the bearing retention nut of the MLG forward trunnion.

B57003-34 adapter equipment consists of a wrench adapter and sockets which are used to torque the MLG forward trunnion fittings.

The B57003-33 adapter equipment consists of all the B57003-3, -4, and -34 assemblies and is used for all of the above applications. Refer to AMM 57-54-05 for additional information. Note that B57003-3, -4 and -33 include sockets from the Boeing special tool B32027 socket set. The B57003-3, -4, -34 and -33 adapter equipment consists of:

B57003-3		
QUANTITY	NOMENCLATURE	PART NUMBER
1	SOCKET ASSEMBLY	B32027-3
1	REACTION FITTING ASSEMBLY	B57003-9
1	STORAGE BOX	

B57003-4		
QUANTITY	NOMENCLATURE	PART NUMBER
1	SOCKET ASSEMBLY	B32027-2
1	REACTION FITTING ASSEMBLY	B57003-11
1	STORAGE BOX	



757

ILLUSTRATED TOOL AND EQUIPMENT MANUAL

B57003-34		
QUANTITY	NOMENCLATURE	PART NUMBER
1	SOCKET 2 3/4"	B57003-7
1	SOCKET 2"	LDH643
1	SOCKET 2 1/16"	IM663
1	WRENCH ADAPTER	B57003-30
1	STORAGE BOX	

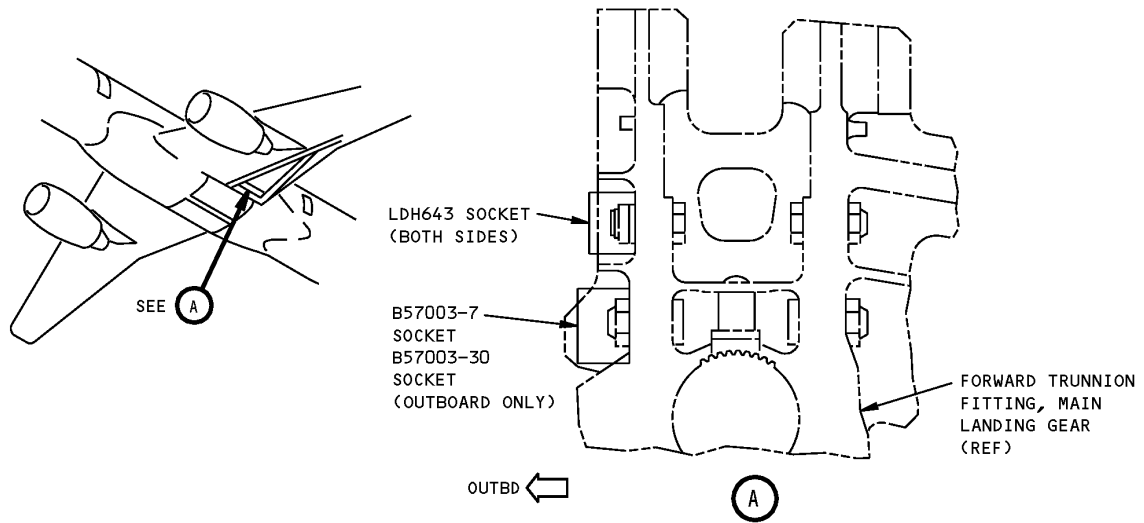
B57003-33		
QUANTITY	NOMENCLATURE	PART NUMBER
1	SOCKET ASSEMBLY	B32027-3
1	REACTION FITTING ASSEMBLY	B57003-9
1	SOCKET ASSEMBLY	B32027-2
1	REACTION FITTING ASSEMBLY	B57003-11
1	SOCKET 2 3/4"	B57003-7
1	SOCKET 2"	LDH643
1	SOCKET 2 1/16"	IM663
1	WRENCH ADAPTER	B57003-30
1	STORAGE BOX	

WEIGHT:
B57003-3 - 15 lbs
B57003-4 - 10 lbs
B57003-34 - 5 lbs
B57003-33 - 30 lbs

DIMENSIONS:
B57003-3 - 7 x 10 x 20 inches
B57003-4 - 7 x 10 x 15 inches
B57003-34 - 7 x 10 x 15 inches
B57003-33 - 7 x 18 x 24 inches

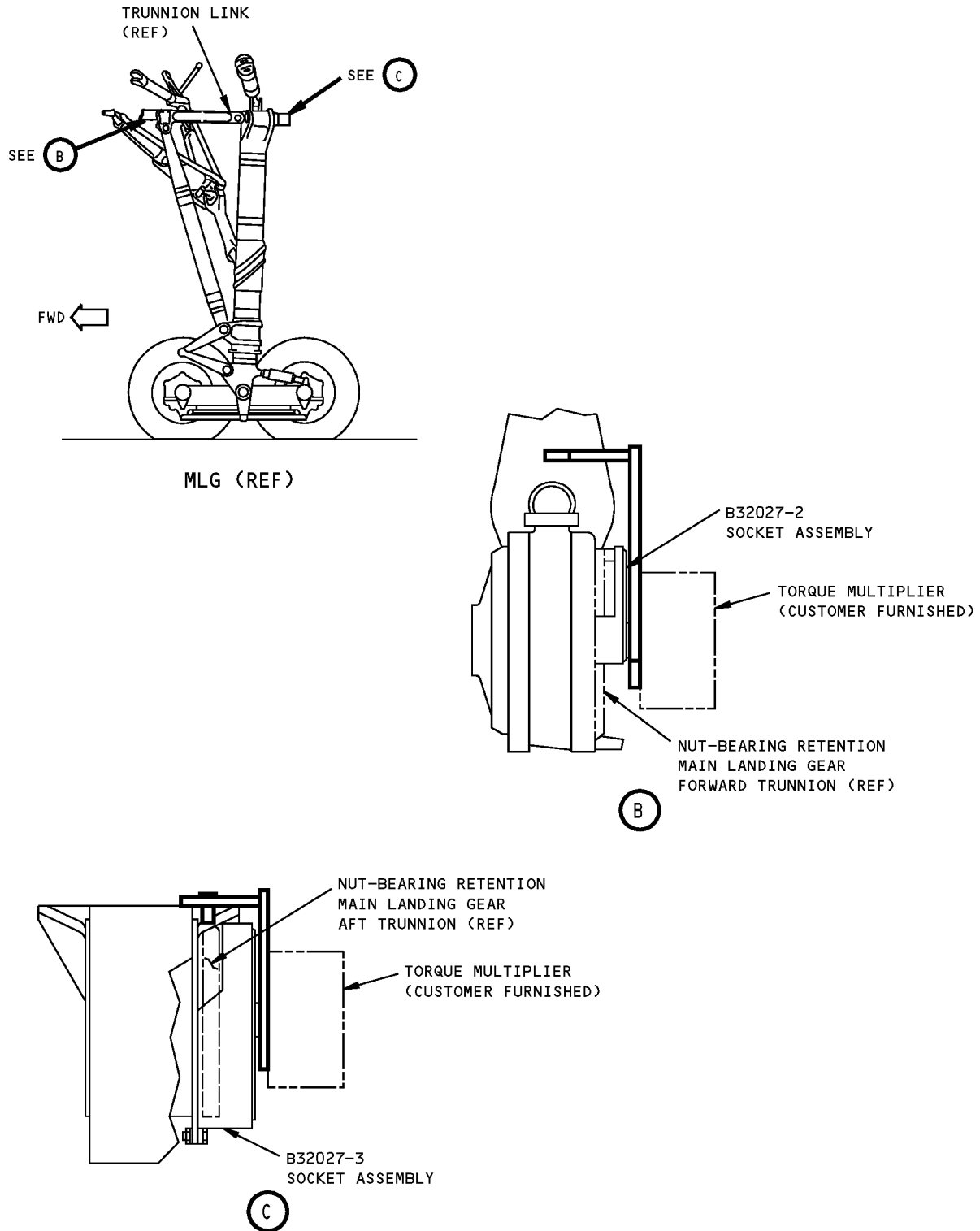
NOTE: B57003-33 and -34 supersedes B57003-28 and -29 respectively.

757
ILLUSTRATED TOOL AND EQUIPMENT MANUAL



MLG Installation And Removal, Trunnion Bearing And Mount Adapter Equipment
Figure 1 (Sheet 1 of 2)

ILLUSTRATED TOOL AND EQUIPMENT MANUAL



**MLG Installation And Removal, Trunnion Bearing And Mount Adapter Equipment
Figure 1 (Sheet 2 of 2)**



757

ILLUSTRATED TOOL AND EQUIPMENT MANUAL

PART NUMBER: B57005-1

NAME: SOCKET ASSEMBLY - RETENTION NUT, ACTUATOR SUPPORT, MAIN LANDING GEAR (MLG) BEAM

AIRPLANE MAINTENANCE: NO

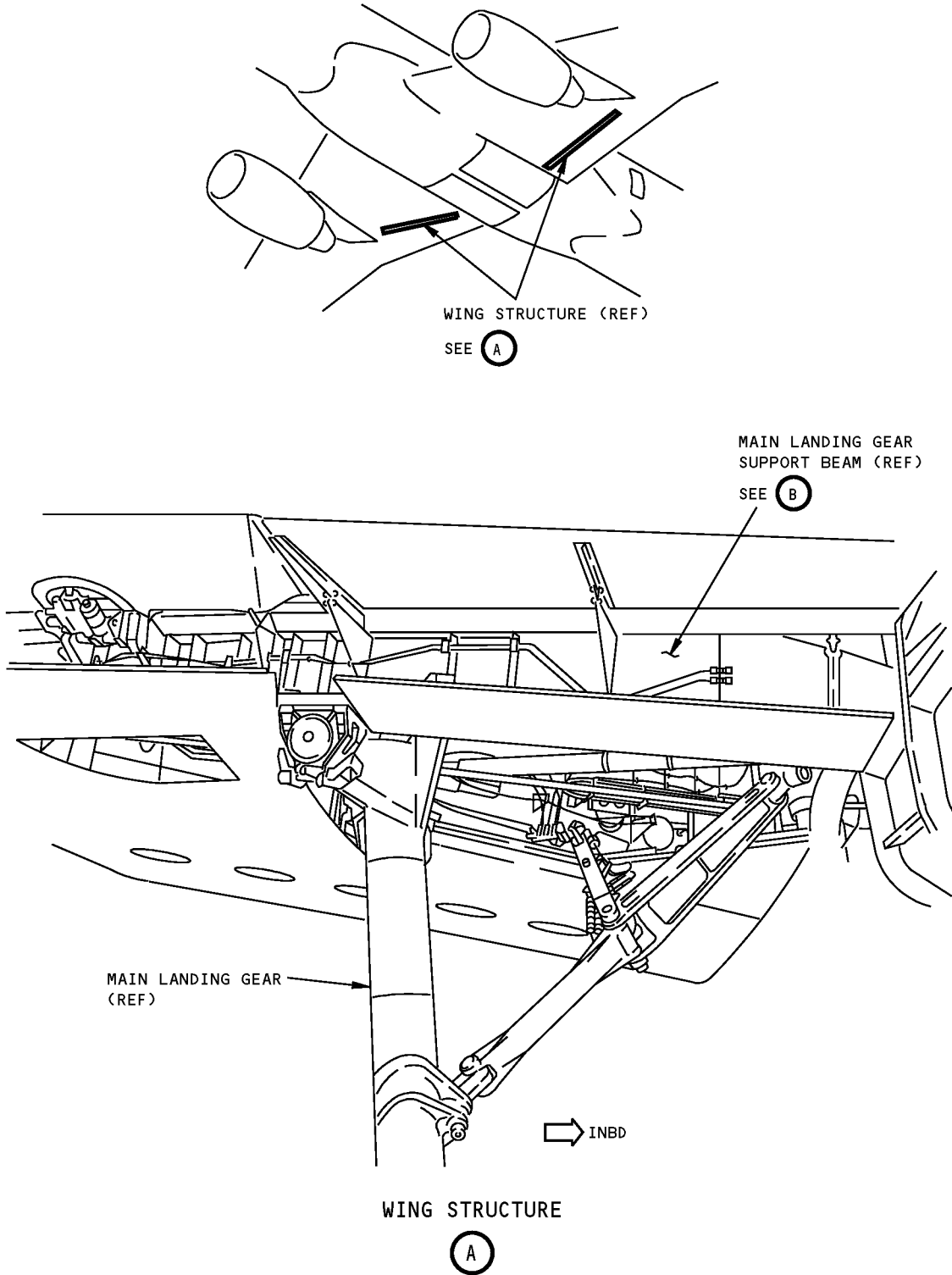
COMPONENT MAINTENANCE: YES

USAGE & DESCRIPTION: The B57005-1 socket assembly is used during component maintenance on all 757 airplanes. B57005 is used to remove or install the 113N1019 main landing gear actuator beam bearing retention nut. Refer to CMM 57-54-15 for complete usage instructions. B57005-1 consists of a B57005-2 socket assembly contained in a storage box.

WEIGHT: 15 lbs (7 kg)

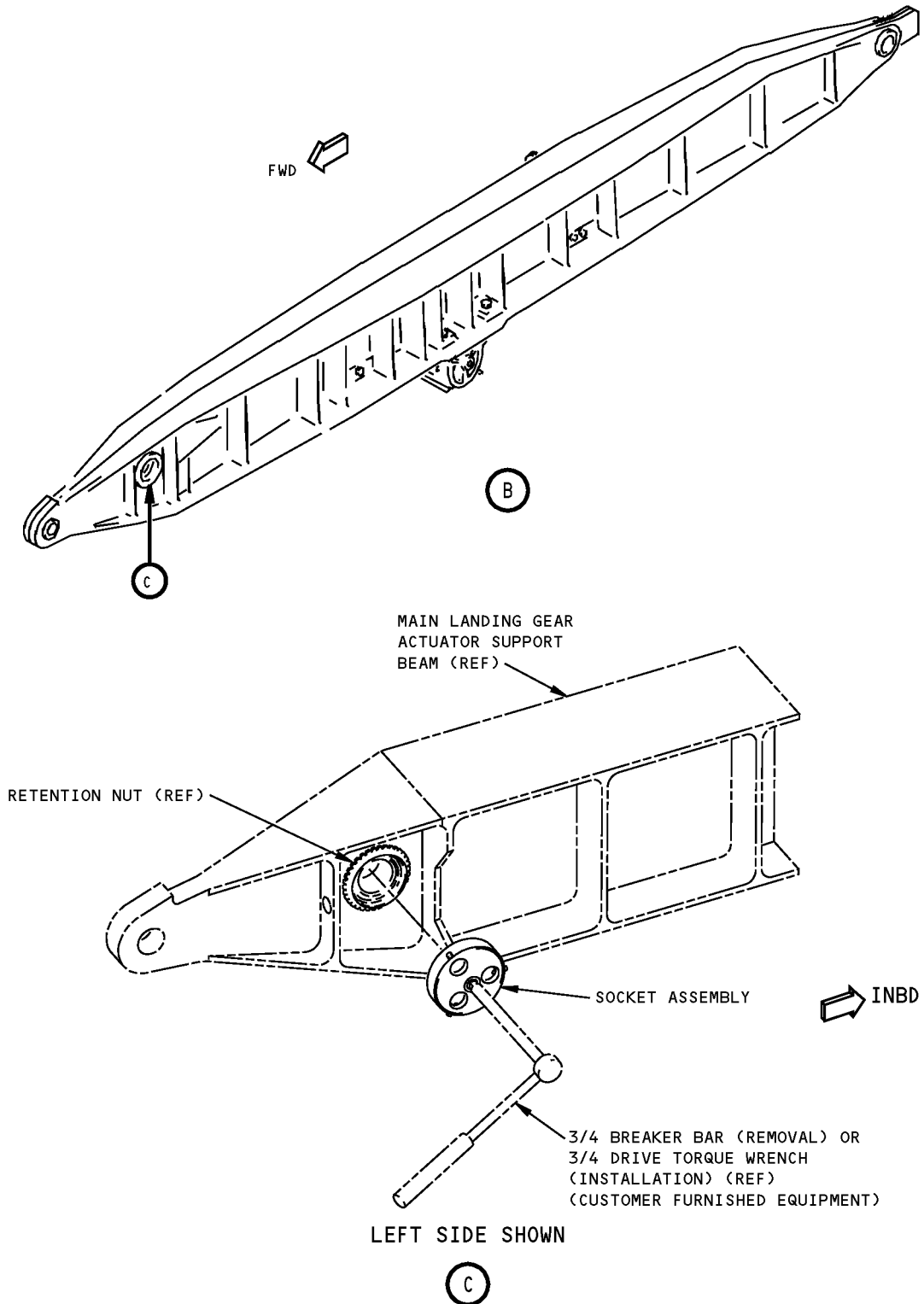
DIMENSIONS: 2 x 7 inches (51 x 178 mm)

ILLUSTRATED TOOL AND EQUIPMENT MANUAL



**MLG Beam Actuator Support Retention Nut Socket Assembly
Figure 1 (Sheet 1 of 2)**

**757
ILLUSTRATED TOOL AND EQUIPMENT MANUAL**



**MLG Beam Actuator Support Retention Nut Socket Assembly
Figure 1 (Sheet 2 of 2)**