

CHAPTER

72

ENGINE



757
ILLUSTRATED TOOL AND EQUIPMENT MANUAL

CHAPTER 72
ENGINE

Subject/Page	Date	Subject/Page	Date	Subject/Page	Date
EFFECTIVE PAGES					
1	Sep 20/2008				
2	BLANK				
72-CONTENTS					
1	Sep 20/2006				
2	BLANK				
72-00-01					
1	Sep 20/2006				
2	Sep 20/2006				
72-00-02					
1	Sep 20/2006				
2	Sep 20/2006				
3	Sep 20/2006				
4	Sep 20/2006				
5	Sep 20/2006				
6	Sep 20/2006				
7	Sep 20/2006				
8	Sep 20/2006				
9	Sep 20/2006				
10	Sep 20/2006				
11	Sep 20/2006				
12	BLANK				

A = Added, R = Revised, O = Overflow, D = Deleted

72-EFFECTIVE PAGES

Page 1
Sep 20/2008

D634N501



757
ILLUSTRATED TOOL AND EQUIPMENT MANUAL

TABLE OF CONTENTS

<u>Subject</u>	<u>Title</u>	<u>Part No.</u>
72-	ENGINE	
72-00-01	HANDLING FIXTURE - HIGH SPEED GEARBOX, RB211-535	B71018-28
72-00-02	BALANCE EQUIPMENT - ENGINE TRIM	B72001-1, -19

72-CONTENTS



757
ILLUSTRATED TOOL AND EQUIPMENT MANUAL

PART NUMBER: B71018-28

NAME: HANDLING FIXTURE - HIGH SPEED GEARBOX, RB211-535

AIRPLANE MAINTENANCE: YES

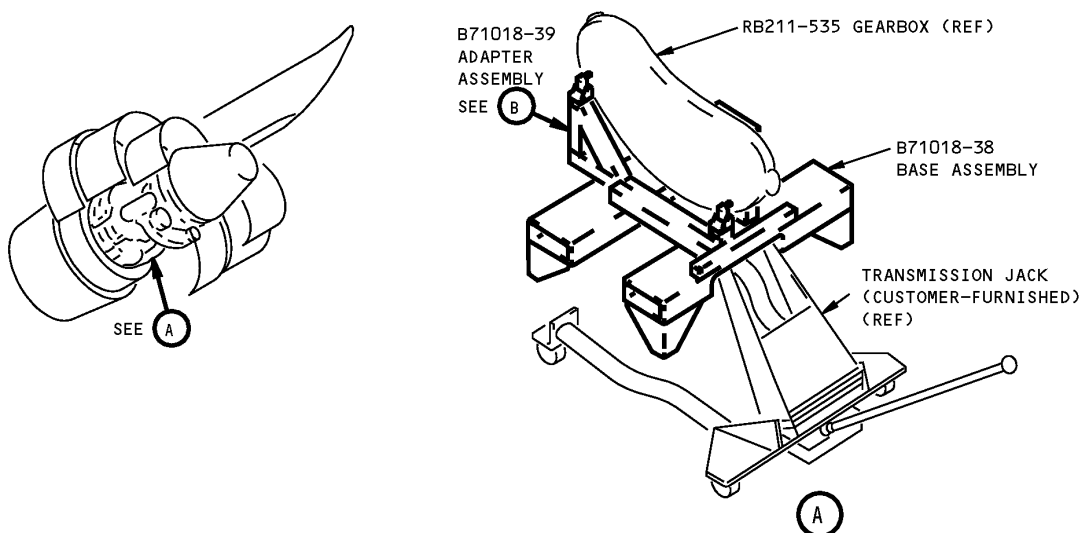
COMPONENT MAINTENANCE: NO

USAGE & DESCRIPTION: The B71018-28 handling fixture is used on 757 airplanes equipped with RB211-535 engines. B71018 is used with a customer-furnished Hein-Werner Model 62 (or equivalent) hydraulic transmission jack to removal or install the engine high speed external gearbox. Refer to AMM 72-00-61 and the current B71018 drawing for complete usage instructions. B71018-28 consists of a B71018-38 base assembly and a B71018-39 adapter assembly.

WEIGHT: 235 lbs (107 kg)

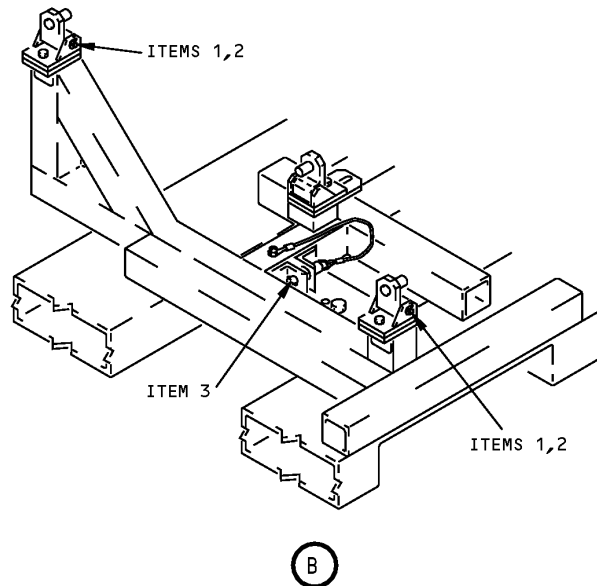
DIMENSIONS: 28 x 40 x 48 inches (711 x 1016 x 1219 mm)

NOTE: B71018-28 supersedes B71018-1.



RB211-535 High Speed Gearbox Handling Fixture
Figure 1 (Sheet 1 of 2)

757
ILLUSTRATED TOOL AND EQUIPMENT MANUAL



RB211-535 High Speed Gearbox Handling Fixture
Figure 1 (Sheet 2 of 2)

REPAIRABLE/REPLACEABLE PARTS			
ITEM NO.	PART NO.	NOMENCLATURE	VENDOR CODE
1	MS20392-5C83	STRAIGHT HEAD PIN	
2	MS24665-283	COTTER PIN	
3	NAS1338C6C15D	QUICK RELEASE PIN	



757

ILLUSTRATED TOOL AND EQUIPMENT MANUAL

PART NUMBER: B72001-1, -19

NAME: BALANCE EQUIPMENT - ENGINE TRIM

AIRPLANE MAINTENANCE: YES

COMPONENT MAINTENANCE: NO

USAGE & DESCRIPTION: The B72001-1 or -19 balance equipment is used on 757 airplanes equipped with PW2000 engines. The B72001 is used to measure low pressure rotor trim balance on PW2000 series engines. The B72001-1 is used with a customer-furnished ENDEVCO 68301-2 trim balance analyzer. The B72001-19 equipment is used with a customer-furnished Mechanical Technology Incorporated (MTI) PBS 4100, portable balancing system (which supersedes the combination of PBS 4000 and charge amplifier CA40-B757). Refer to AMM 71-00-00 for complete usage instructions. The B72001-1 and -19 balance equipment consists of:

B72001-1		
QUANTITY	NOMENCLATURE	PART NUMBER
1	"B" FLANGE ASSEMBLY	B72001-3
1	"P" FLANGE ASSEMBLY	B72001-4
2	BOLT	AN4C10
2	BOLT	AN4C13
8	WASHER	AN960C416L
4	NUT	MS51972-1
5	CLAMP	QS100M20H
1	STORAGE BOX	

B72001-19		
QUANTITY	NOMENCLATURE	PART NUMBER
1	CABLE ASSEMBLY	B72001-21
1	CABLE ASSEMBLY	B72001-22
1	"B" FLANGE ASSEMBLY	B72001-25
1	"P" FLANGE ASSEMBLY	B72001-26
2	BOLT	AN4C10
2	BOLT	AN4C13
8	WASHER	AN960C416L
4	NUT	MS51972-1
5	CLAMP	QS100M20H



757
ILLUSTRATED TOOL AND EQUIPMENT MANUAL

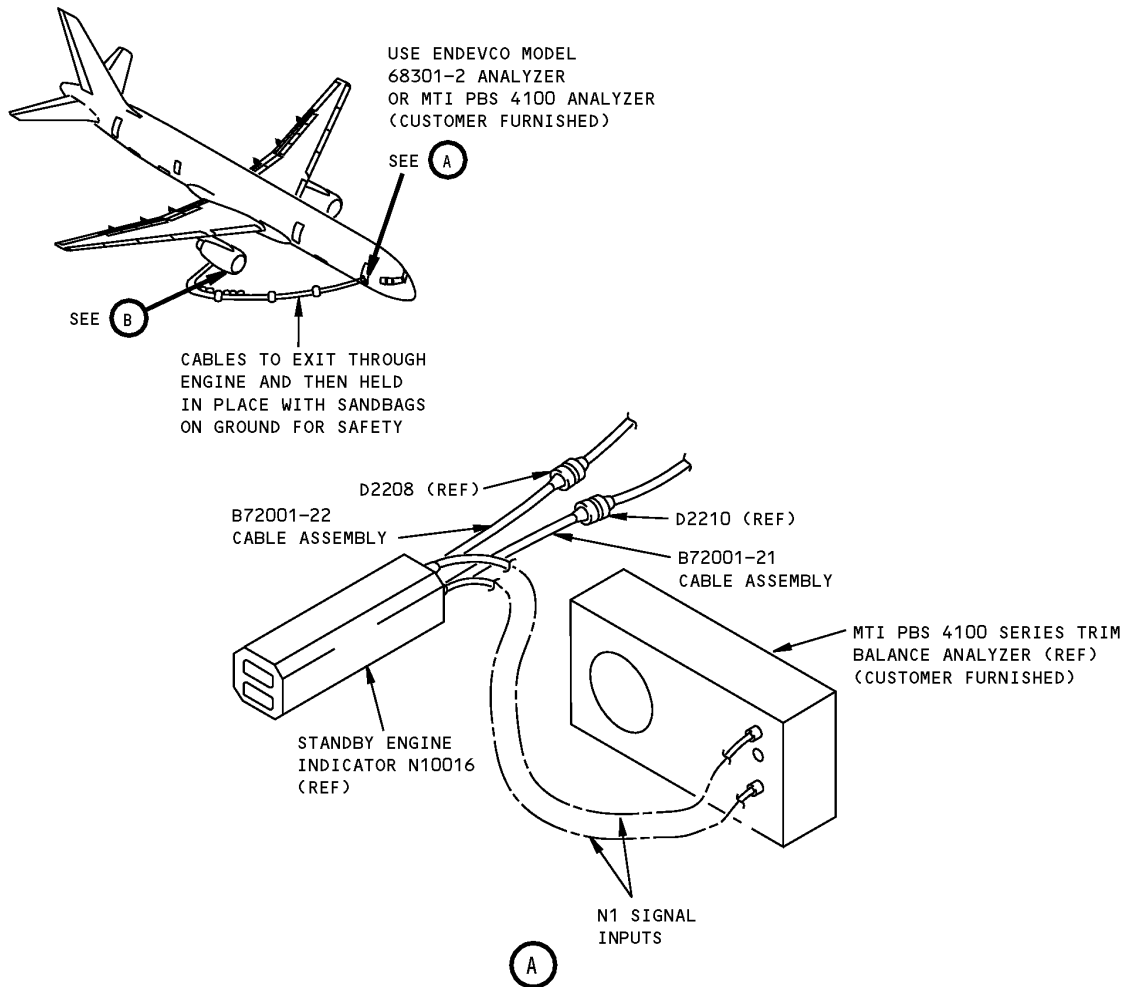
B72001-19		
QUANTITY	NOMENCLATURE	PART NUMBER
1	STORAGE BOX	

WEIGHT: 30 lbs (14 kg)

DIMENSIONS: 8 x 24 x 24 inches (203 x 610 x 610 mm)

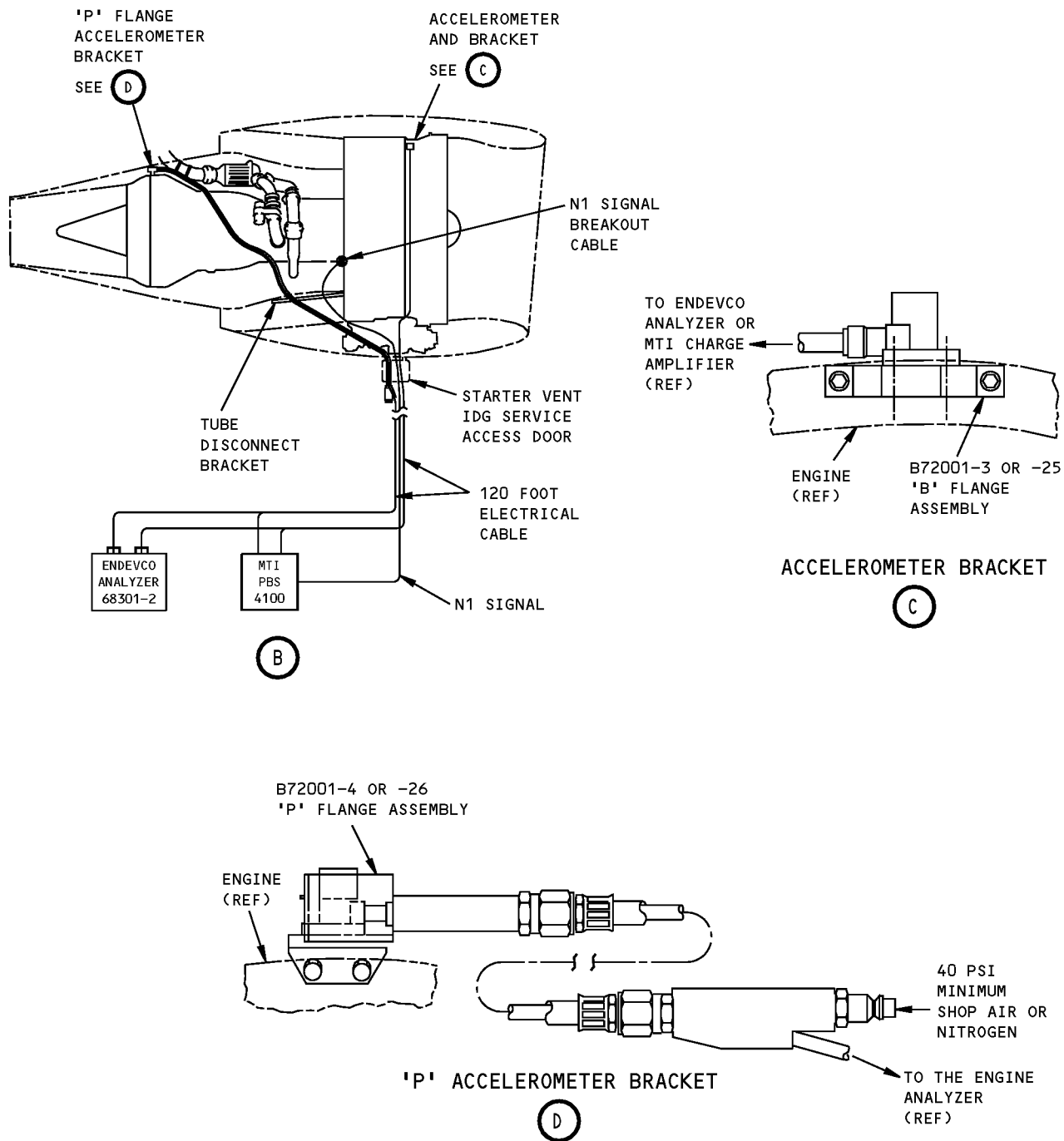
NOTE: B72001-1 or -19 are replaced by commercial equipment for future procurement. Contact Boeing Maintenance and Ground Operations Systems (MGOS) for suggested sources.

757 ILLUSTRATED TOOL AND EQUIPMENT MANUAL



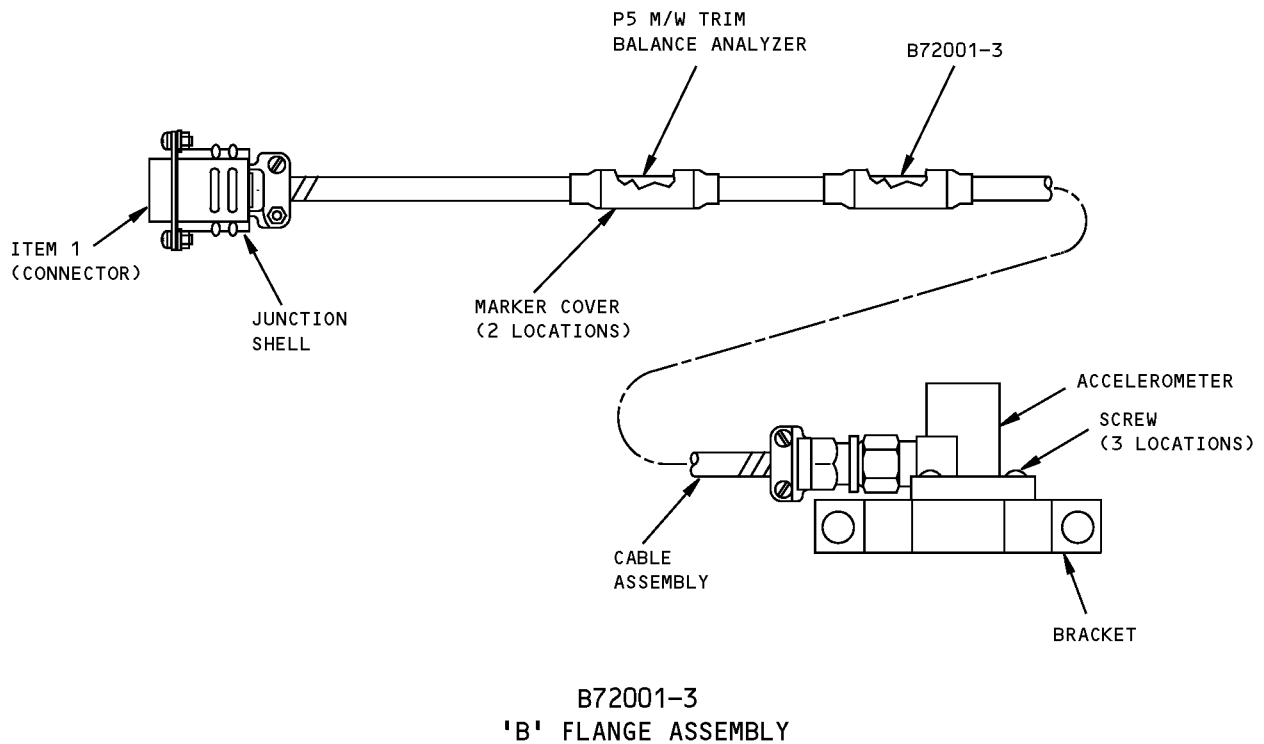
**Engine Trim Balance Equipment
Figure 1 (Sheet 1 of 8)**

ILLUSTRATED TOOL AND EQUIPMENT MANUAL



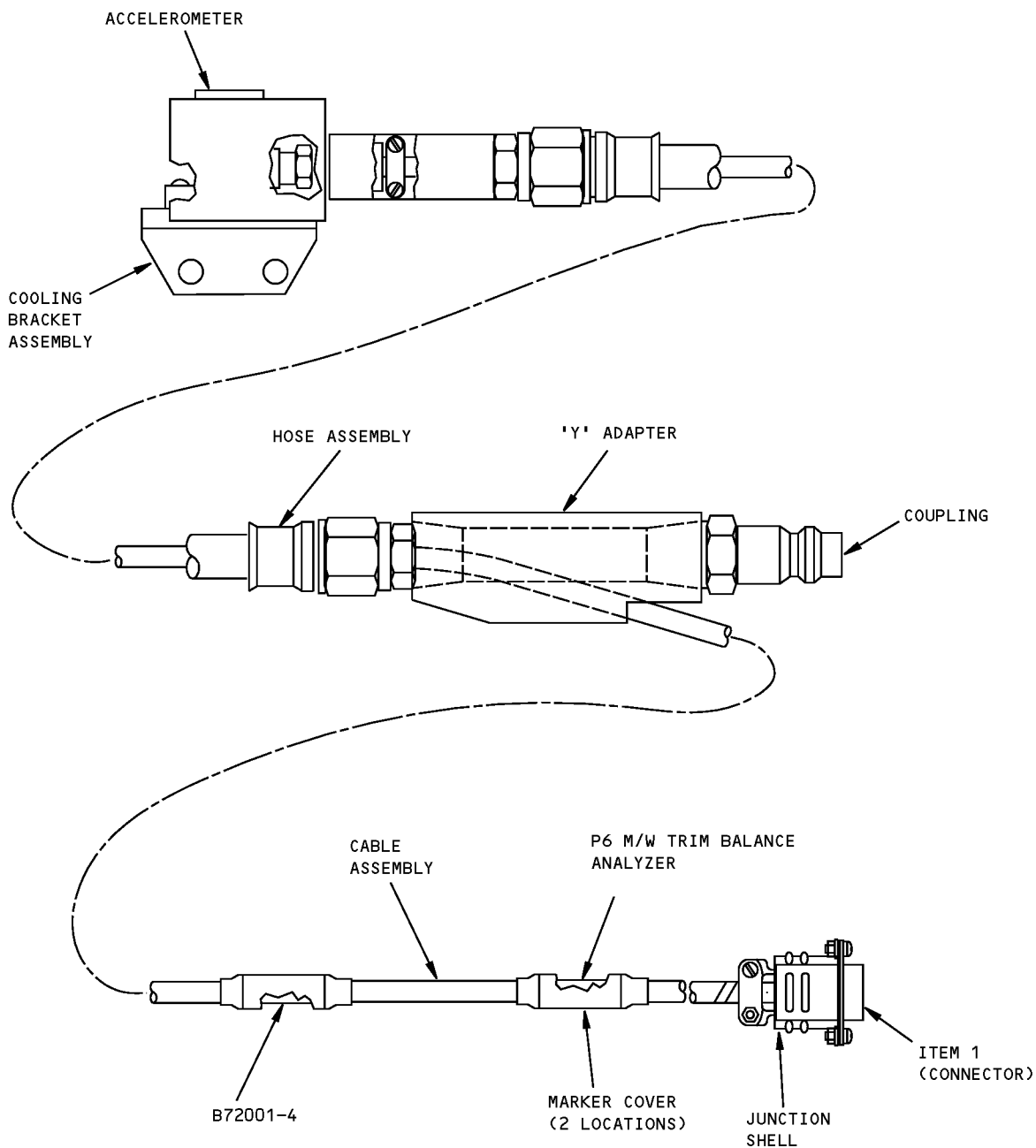
Engine Trim Balance Equipment
Figure 1 (Sheet 2 of 8)

757
ILLUSTRATED TOOL AND EQUIPMENT MANUAL



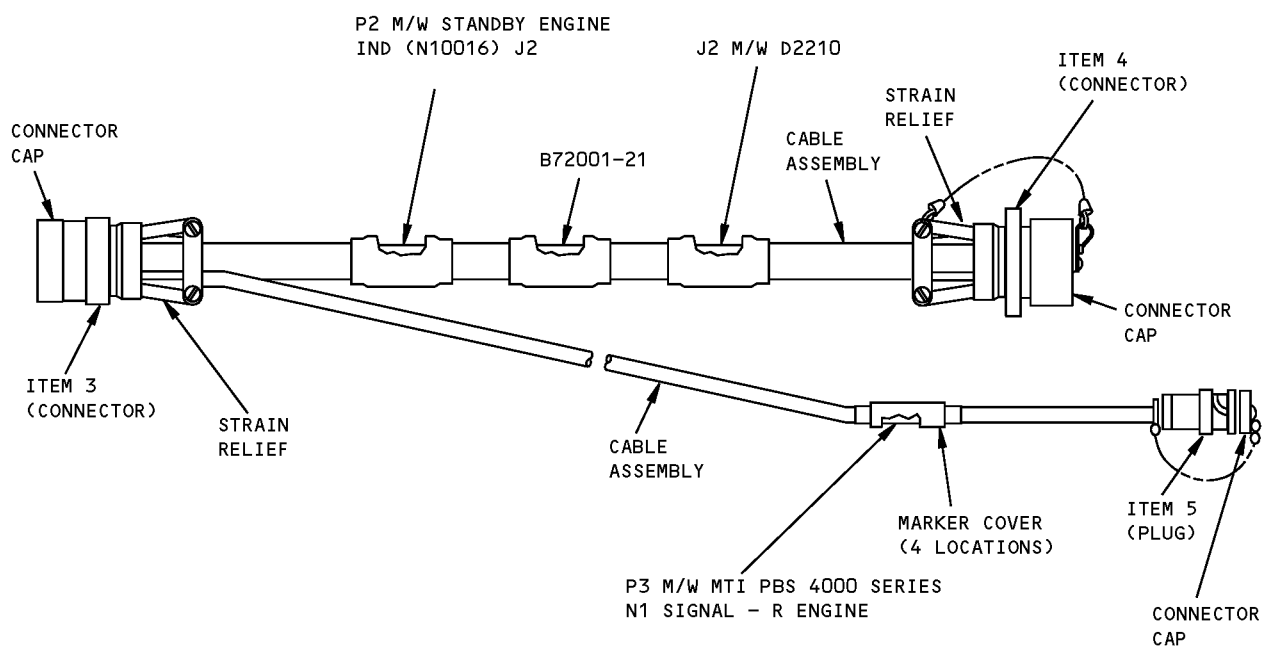
Engine Trim Balance Equipment
Figure 1 (Sheet 3 of 8)

757
ILLUSTRATED TOOL AND EQUIPMENT MANUAL



B72001-4
'P' FLANGE ASSEMBLY

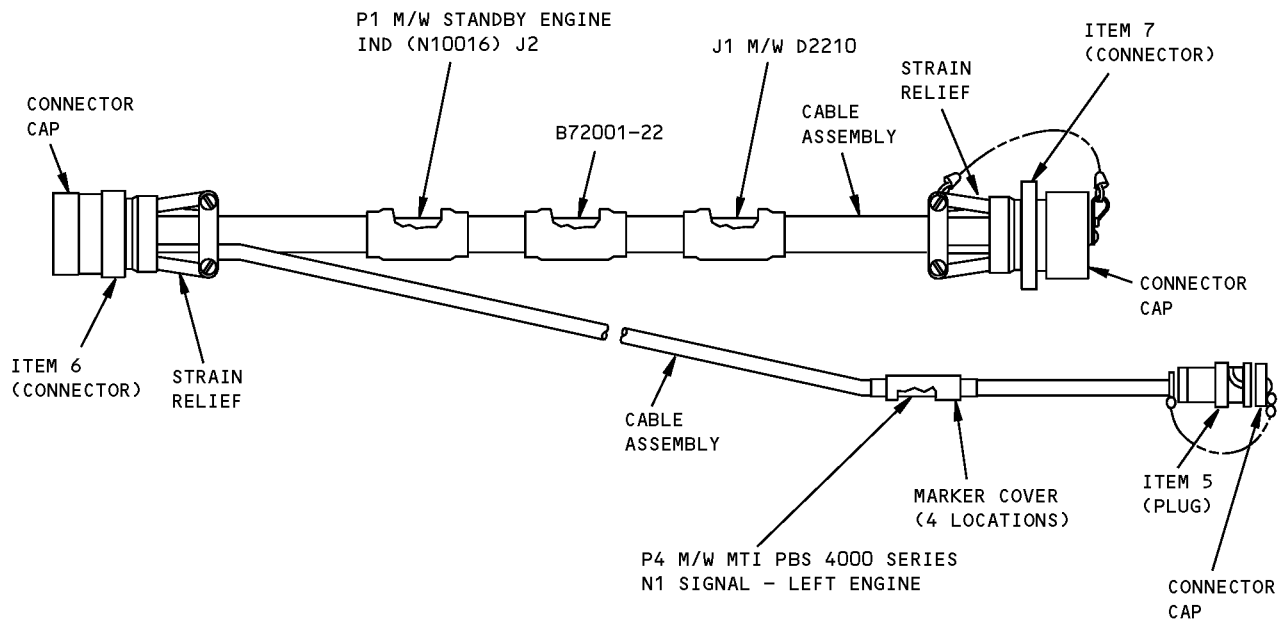
Engine Trim Balance Equipment
Figure 1 (Sheet 4 of 8)



**B72001-21
CABLE ASSEMBLY RIGHT ENGINE N1**

**Engine Trim Balance Equipment
Figure 1 (Sheet 5 of 8)**

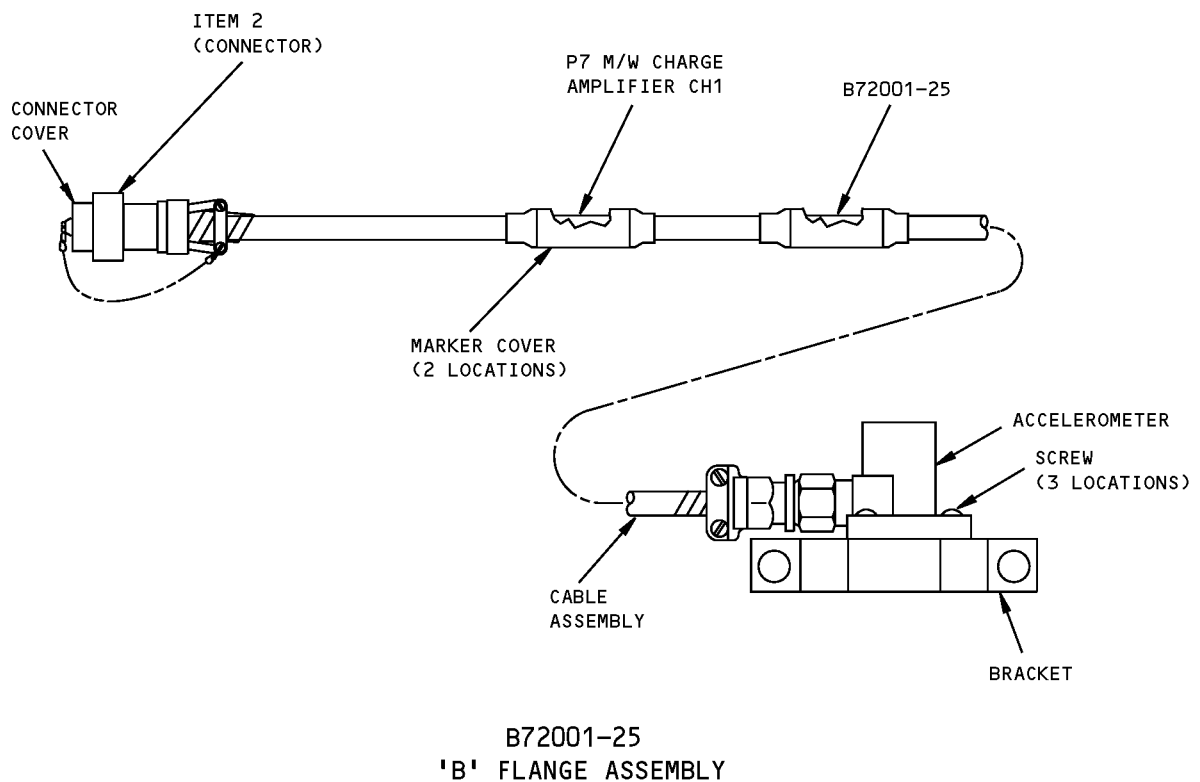
757
ILLUSTRATED TOOL AND EQUIPMENT MANUAL



B72001-22
CABLE ASSEMBLY LEFT ENGINE N1

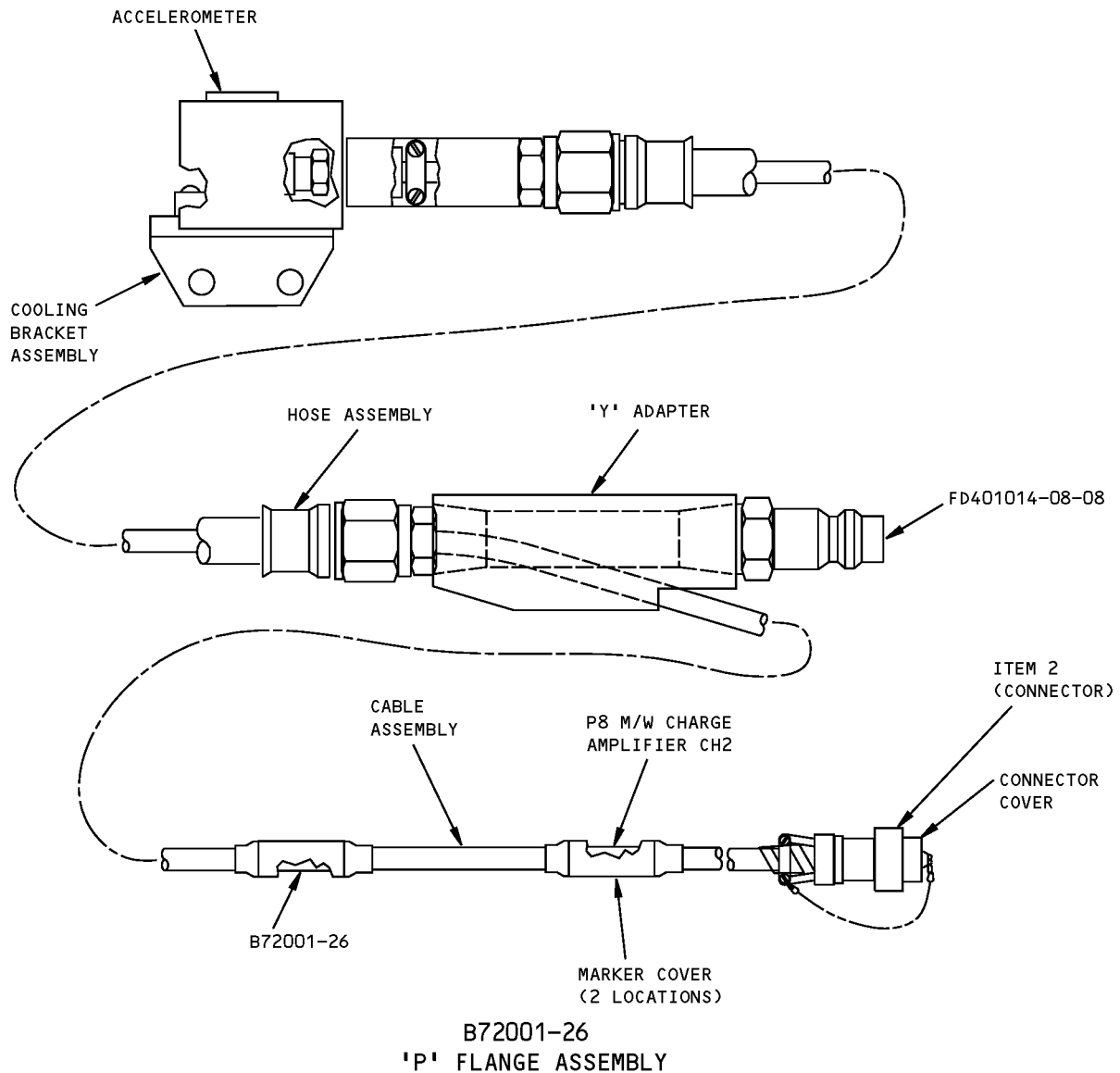
Engine Trim Balance Equipment
Figure 1 (Sheet 6 of 8)

757
ILLUSTRATED TOOL AND EQUIPMENT MANUAL



Engine Trim Balance Equipment
Figure 1 (Sheet 7 of 8)

757
ILLUSTRATED TOOL AND EQUIPMENT MANUAL



Engine Trim Balance Equipment
Figure 1 (Sheet 8 of 8)



757

ILLUSTRATED TOOL AND EQUIPMENT MANUAL

REPAIRABLE/REPLACEABLE PARTS			
ITEM NO.	PART NO.	NOMENCLATURE	VENDOR CODE
1	DE-9P	CONNECTOR	V71468
2	MS310F10SL3S	CONNECTOR	
3	M83723/75R16248	CONNECTOR	
4	M83723/74R16248	CONNECTOR	
4	M38723/72R16248	CONNECTOR (OPTION)	
5	13925	PLUG	V71468
6	M83723/7516246	CONNECTOR	
7	M83723/74R16246	CONNECTOR	
7	M83723/72R16246	CONNECTOR (OPTION)	